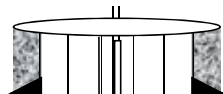




Black Hills Plateau Production, LLC

A Black Hills Corporation Enterprise



General Well Info		Diagram Date:	Updated 3/3/2015
Well Name:	WF 1-13-100	Field:	Bronco Flats
Srf Location:	NENE 13 9S 100W	County:	Mesa
Lease # (BLM):	C-12657	State:	Colorado
API #:	05-077-08503	Spud Date:	7/16/1982
GL Elev:	6433'	TD Date:	7/26/1982
KB Elev:	6448'	Compl Date:	8/25/1982
Formation Tops			
Zone	Depth	Zone	Depth
Rollins	1677'	Mancos	2324'
Cozzette	1793'	Dakota Silt	6330'
Corcoran	2032'	Dakota SS	6368'
Sego	2163'	Cedar Mtn	6446'

Surface casing (10/1/82):

9 5/8" 36#, K55, ST&C set @ 308' (13 3/4" hole)
325sx Reg w/ 2% CaCl & 1/4#/sk Flocele
TOC @ srf

Production casing (10/13/82):

4 1/2" 10.5#, K55, ST&C @ 6630' (FC @ 6597', DV @ 2263', 2172' cbl) (8 3/4" hole)
1st stage: 80sx Lite & 200sx Reg 2% CaCl w/ 1/4#/sk Flocele
2nd stage: 80 sx Lite & 200 sx Reg 2% CaCl w/ 1/4#/sk Flocele, lost circ w/20 bbls displacer
CBL na - Info from report: Good bond from TD to 6150', no cmt above 6150' or above DV, no
cmt from 2300-1800'
HIC's 1957-2018', 3745-3807', 4363-4424'

Production liner (10/30/08):

Latching seal assembly (1.938" ID) 1.69' long w/1.21' inside pkr, 2 3/8" x 2 7/8" x-o (1.995" OD
& .51' long), 2 7/8" x 4' perf sub, 2-7/8" 6.5# J-55 w/WS pkr at 6196' (191 jts)
100 sx 11.0 ppg and 30 sx 15.8 ppg, over displace by 1-2 bw
TOC - est 500-700' from surface, load w/1 bw, pressure test good to 500 psi down liner, 100 psi
4 1/2" Arrowdrill Seal-Bore (2.688" ID) w/knock out bottom (2.688" ID) set at 6196', 5000# tension

Production tubing (10/11/10)

1.900" 2.76# IJ, 1.610" ID, Tool jt OD 2.110", EOT: 6364' SN 6195',
8' x 1.660" NC, sub, 5 jts 1.660" IJ 10rd tbg, x-o sub 1.660" x 1.900", SN, 1.37" ID, 185 jts
1.900" 2.76# IJ 10 rd

DKTA (9/20/10) 6382-6392', 6393-6405', 6398-6407' 1 11/16" exp guns, 4 spf, 8.4 gms
9/30/10 Frac. Calfrac. Stinger. Dynaflo-1, 1000 gals 7 1/2 % acid, 1582 bbls x-link 30Q foam,
80650# 30/50, 762.5 bbls CO2. MP: 6613 psi, AP: 4264 psi, AR 11.3 bpm. Pressured out on 2 p
Finish w/6000# 4 ppg, flush 2 bbls short, x-link fluid. ISIP: 612 psi, 5 min 667 psi, 10 min 642 p

CDMTN (8/18/82) 6447-64, 6481-6506' (1hpf, 22 holes, .34" ehd)

◆ 8/19/82 Acidize DK/CM w/ 2000gal 7-1/2% Reg & 30 BS
MR 8.1bpm AR 5.2bpm MP 4430# AR 2900#
Balled off at 4430# ISIP 700#, 15min 100#
◆ 8/25/82 6447-6506' 220,000# 20/40sd, 3167gal Versagel fluid 1600 & 1500 w/ 500scf CO2/bbl
MR 49.6bpm+CO2 AR 48.5bpm+CO2 MP 4130# AP 4000#
ISIP 2600, 15min 1070

TOC @ 6150'
Fish in hole @ 6173'
10/10/10 6517' PBTD @ 6554'
Float collar 6597' ID 6630'