



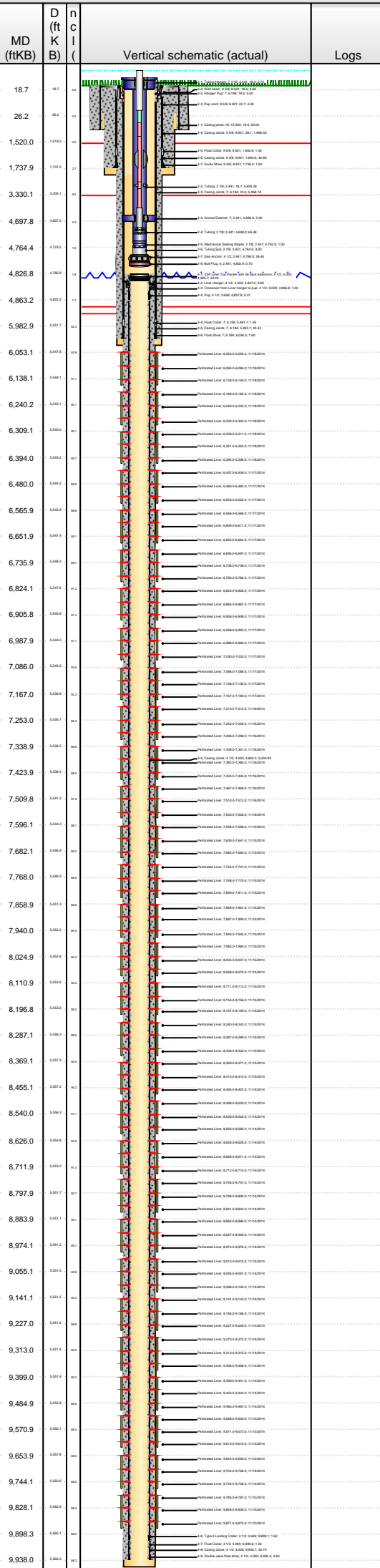
# Lease Review All - Frac Summary

## Well Name: HORSETAIL 02D-0204

API Number 051233938300	WPC ID 1CO0761118	Well Permit Number	Field Name Wildcat	County Weld	State CO
Well Configuration Type Lateral/Horizontal	Orig KB Elv (ft) 4,796.50	Ground Elevation (ft) 4,778.00	Casing Flange Elevation (ft)	Tubing Head Elevation (ft)	Total Depth (ftKB) 9,948.0
Original Spud Date 10/7/2014	Completion Date 11/18/2014	Asset Group Redtail	Responsible Engineer Charles Ohlson	N/S Dist (ft) 330.0	N/S Ref FNL
Lot	Quarter 1 NW	Quarter 2 NW	Quarter 3	Quarter 4	Section 2
			Section Suffix	Section Type	Township 10 N
					Township N/S Dir Range 57 W
					Range E/W Dir Meridian FWL

Lateral/Horizontal - Original Hole, 3/6/2015 9:52:39 AM

### Wellbore Sections



Wellbore Name	Start Date	Size (in)	Act Top (ftKB)	Act Btm (ftKB)
Original Hole	10/2/2014	19 1/4	18.5	108.5
Original Hole	10/7/2014	13 1/2	108.5	1,760.0
Original Hole	10/9/2014	8 3/4	1,760.0	6,045.0
Original Hole	10/11/2014	6	6,045.0	9,948.0

### Conductor Pipe, 108.5ftKB

OD (in)	Wt (lb/ft)	Grade	Top (ftKB)	Btm (ftKB)	Len (ft)	Item Des
16	42.09	J-55	18.5	108.5	90.00	Casing joints

### Surface Csg, 1,737.9ftKB

OD (in)	Wt (lb/ft)	Grade	Top (ftKB)	Btm (ftKB)	Len (ft)	Item Des
9 5/8	36.00	J-55	18.5	18.5	0.00	Landing joint
9 5/8	36.00	J-55	18.5	22.1	3.60	Well head
9 5/8	36.00	J-55	22.1	26.1	4.00	Pup joint
9 5/8	36.00	J-55	26.1	1,692.6	1,666.50	Casing Joints
9 5/8	36.00	J-55	1,692.6	1,693.6	1.00	Float collar
9 5/8	36.00	J-55	1,693.6	1,736.4	42.80	Casing Joints
9 5/8	36.00	J-55	1,736.4	1,737.9	1.50	Guide shoe

### Intermediate Csg, 6,028.1ftKB

OD (in)	Wt (lb/ft)	Grade	Top (ftKB)	Btm (ftKB)	Len (ft)	Item Des
7	29.00	HCL-80	18.5	18.5	0.00	Landing Joint
7	29.00	HCL-80	18.5	23.5	5.00	Hanger/ Pup
7	29.00	P-110	23.5	5,981.7	5,958.18	Casing Joints
7	29.00	HCL-80	5,981.7	5,983.1	1.40	Float Collar
7	29.00	P-110	5,983.1	6,026.5	43.42	Casing Joints
7	29.00	HCL-80	6,026.5	6,028.1	1.60	Float Shoe

### Liner, 9,938.0ftKB

OD (in)	Wt (lb/ft)	Grade	Top (ftKB)	Btm (ftKB)	Len (ft)	Item Des
4 1/2	11.60	HCP-110	4,826.7	4,847.2	20.44	ZXP Liner Top Packer with tie back extension
4 1/2	11.60	HCP-110	4,847.2	4,856.8	9.69	Liner Hanger
4 1/2	11.60	HCP-110	4,856.8	4,857.8	1.00	Crossover from Liner hanger to pup
4 1/2	11.60	HCP-110	4,857.8	4,863.2	5.37	Pup
4 1/2	11.60	HCP-110	4,863.2	9,898.1	5,034.93	Casing Joints
4 1/2	11.60	HCP-110	9,898.1	9,899.6	1.50	Type II Landing Collar
4 1/2	11.60	HCP-110	9,899.6	9,900.7	1.02	Float Collar
4 1/2	11.60	HCP-110	9,900.7	9,935.4	34.74	Casing Joints
4 1/2	11.60	HCP-110	9,935.4	9,938.0	2.60	Double valve float shoe

### Cement Stages

Des	Pump Start Date	Drill Out Date	Top (ftKB)	Btm (ftKB)	Top Meas Meth
Conductor Cement	10/2/2014		18.5	108.5	Returns to Surface
Surface Casing Cement	10/8/2014		18.5	1,737.9	Returns to Surface
Intermediate Casing Cement	10/11/2014		18.5	4,400.0	Returns to Surface
Intermediate Casing Cement	10/11/2014		4,400.0	6,028.1	Returns to Surface
Liner Cement	10/15/2014		4,826.7	9,938.0	Returns to Surface

### Perforations

Type of Hole	Date	Top (ftKB)	Btm (ftKB)	Zone
Perforated Liner	11/18/2014	6,053.0	6,055.0	Niobrara, Original Hole
Perforated Liner	11/18/2014	6,094.0	6,096.0	Niobrara, Original Hole
Perforated Liner	11/18/2014	6,138.0	6,140.0	Niobrara, Original Hole
Perforated Liner	11/18/2014	6,180.0	6,182.0	Niobrara, Original Hole
Perforated Liner	11/18/2014	6,240.0	6,242.0	Niobrara, Original Hole
Perforated Liner	11/18/2014	6,300.0	6,302.0	Niobrara, Original Hole
Perforated Liner	11/18/2014	6,309.0	6,311.0	Niobrara, Original Hole
Perforated Liner	11/18/2014	6,351.0	6,353.0	Niobrara, Original Hole
Perforated Liner	11/18/2014	6,394.0	6,396.0	Niobrara, Original Hole
Perforated Liner	11/17/2014	6,437.0	6,439.0	Niobrara, Original Hole
Perforated Liner	11/17/2014	6,480.0	6,482.0	Niobrara, Original Hole
Perforated Liner	11/17/2014	6,523.0	6,525.0	Niobrara, Original Hole
Perforated Liner	11/17/2014	6,566.0	6,568.0	Niobrara, Original Hole
Perforated Liner	11/17/2014	6,609.0	6,611.0	Niobrara, Original Hole
Perforated Liner	11/17/2014	6,652.0	6,654.0	Niobrara, Original Hole
Perforated Liner	11/17/2014	6,695.0	6,697.0	Niobrara, Original Hole
Perforated Liner	11/17/2014	6,736.0	6,738.0	Niobrara, Original Hole
Perforated Liner	11/17/2014	6,780.0	6,782.0	Niobrara, Original Hole
Perforated Liner	11/17/2014	6,824.0	6,826.0	Niobrara, Original Hole
Perforated Liner	11/17/2014	6,865.0	6,867.0	Niobrara, Original Hole
Perforated Liner	11/17/2014	6,906.0	6,908.0	Niobrara, Original Hole
Perforated Liner	11/17/2014	6,948.0	6,950.0	Niobrara, Original Hole



# Lease Review All - Frac Summary

## Well Name: HORSETAIL 02D-0204

API Number 051233938300	WPC ID 1CO0761118	Well Permit Number	Field Name Wildcat	County Weld	State CO
Well Configuration Type Lateral/Horizontal	Orig KB Elv (ft) 4,796.50	Ground Elevation (ft) 4,778.00	Casing Flange Elevation (ft)	Tubing Head Elevation (ft)	Total Depth (ftKB) 9,948.0
Original Spud Date 10/7/2014	Completion Date 11/18/2014	Asset Group Redtail	Responsible Engineer Charles Ohlson	N/S Dist (ft) 330.0	N/S Ref FNL
				E/W Dist (ft) 750.0	E/W Ref FWL
Lot	Quarter 1 NW	Quarter 2 NW	Quarter 3	Quarter 4	Section 2
					Section Suffix
					Section Type
					Township 10 N
					Township N/S Dir
					Range 57 W
					Range E/W Dir
					Meridian

Lateral/Horizontal - Original Hole, 3/6/2015 9:52:41 AM

MD (ftKB)	D (ft KB)	nc (ft)	Vertical schematic (actual)	Logs	Perforations				
					Type of Hole	Date	Top (ftKB)	Btm (ftKB)	Zone
18.7	18.7	18.7			Perforated Liner	11/17/2014	6,988.0	6,990.0	Niobrara, Original Hole
26.2	26.2	26.2			Perforated Liner	11/17/2014	7,030.0	7,032.0	Niobrara, Original Hole
1,520.0	1,520.0	1,520.0			Perforated Liner	11/17/2014	7,086.0	7,088.0	Niobrara, Original Hole
1,737.9	1,737.9	1,737.9			Perforated Liner	11/17/2014	7,128.0	7,130.0	Niobrara, Original Hole
3,330.1	3,330.1	3,330.1			Perforated Liner	11/17/2014	7,167.0	7,169.0	Niobrara, Original Hole
4,697.8	4,697.8	4,697.8			Perforated Liner	11/16/2014	7,210.0	7,212.0	Niobrara, Original Hole
4,764.4	4,764.4	4,764.4			Perforated Liner	11/16/2014	7,253.0	7,255.0	Niobrara, Original Hole
4,826.8	4,826.8	4,826.8			Perforated Liner	11/16/2014	7,296.0	7,298.0	Niobrara, Original Hole
4,863.2	4,863.2	4,863.2			Perforated Liner	11/16/2014	7,339.0	7,341.0	Niobrara, Original Hole
5,982.9	5,982.9	5,982.9	Perforated Liner	11/16/2014	7,382.0	7,384.0	Niobrara, Original Hole		
6,053.1	6,053.1	6,053.1	Perforated Liner	11/16/2014	7,424.0	7,426.0	Niobrara, Original Hole		
6,138.1	6,138.1	6,138.1	Perforated Liner	11/16/2014	7,467.0	7,469.0	Niobrara, Original Hole		
6,240.2	6,240.2	6,240.2	Perforated Liner	11/16/2014	7,510.0	7,512.0	Niobrara, Original Hole		
6,309.1	6,309.1	6,309.1	Perforated Liner	11/16/2014	7,553.0	7,555.0	Niobrara, Original Hole		
6,394.0	6,394.0	6,394.0	Perforated Liner	11/15/2014	7,596.0	7,598.0	Niobrara, Original Hole		
6,480.0	6,480.0	6,480.0	Perforated Liner	11/15/2014	7,639.0	7,641.0	Niobrara, Original Hole		
6,565.9	6,565.9	6,565.9	Perforated Liner	11/15/2014	7,682.0	7,684.0	Niobrara, Original Hole		
6,651.9	6,651.9	6,651.9	Perforated Liner	11/15/2014	7,725.0	7,727.0	Niobrara, Original Hole		
6,735.9	6,735.9	6,735.9	Perforated Liner	11/15/2014	7,768.0	7,770.0	Niobrara, Original Hole		
6,824.1	6,824.1	6,824.1	Perforated Liner	11/15/2014	7,809.0	7,811.0	Niobrara, Original Hole		
6,905.8	6,905.8	6,905.8	Perforated Liner	11/15/2014	7,859.0	7,861.0	Niobrara, Original Hole		
6,987.9	6,987.9	6,987.9	Perforated Liner	11/15/2014	7,897.0	7,899.0	Niobrara, Original Hole		
7,086.0	7,086.0	7,086.0	Perforated Liner	11/15/2014	7,940.0	7,942.0	Niobrara, Original Hole		
7,167.0	7,167.0	7,167.0	Perforated Liner	11/15/2014	7,982.0	7,984.0	Niobrara, Original Hole		
7,253.0	7,253.0	7,253.0	Perforated Liner	11/15/2014	8,025.0	8,027.0	Niobrara, Original Hole		
7,338.9	7,338.9	7,338.9	Perforated Liner	11/15/2014	8,068.0	8,070.0	Niobrara, Original Hole		
7,423.9	7,423.9	7,423.9	Perforated Liner	11/15/2014	8,111.0	8,113.0	Niobrara, Original Hole		
7,509.8	7,509.8	7,509.8	Perforated Liner	11/15/2014	8,154.0	8,156.0	Niobrara, Original Hole		
7,596.1	7,596.1	7,596.1	Perforated Liner	11/15/2014	8,197.0	8,199.0	Niobrara, Original Hole		
7,682.1	7,682.1	7,682.1	Perforated Liner	11/15/2014	8,240.0	8,242.0	Niobrara, Original Hole		
7,768.0	7,768.0	7,768.0	Perforated Liner	11/15/2014	8,287.0	8,289.0	Niobrara, Original Hole		
7,858.9	7,858.9	7,858.9	Perforated Liner	11/15/2014	8,330.0	8,332.0	Niobrara, Original Hole		
7,940.0	7,940.0	7,940.0	Perforated Liner	11/15/2014	8,369.0	8,371.0	Niobrara, Original Hole		
8,024.9	8,024.9	8,024.9	Perforated Liner	11/15/2014	8,412.0	8,414.0	Niobrara, Original Hole		
8,110.9	8,110.9	8,110.9	Perforated Liner	11/15/2014	8,455.0	8,457.0	Niobrara, Original Hole		
8,196.8	8,196.8	8,196.8	Perforated Liner	11/14/2014	8,498.0	8,500.0	Niobrara, Original Hole		
8,287.1	8,287.1	8,287.1	Perforated Liner	11/14/2014	8,540.0	8,542.0	Niobrara, Original Hole		
8,369.1	8,369.1	8,369.1	Perforated Liner	11/14/2014	8,583.0	8,585.0	Niobrara, Original Hole		
8,455.1	8,455.1	8,455.1	Perforated Liner	11/14/2014	8,626.0	8,628.0	Niobrara, Original Hole		
8,540.0	8,540.0	8,540.0	Perforated Liner	11/14/2014	8,669.0	8,671.0	Niobrara, Original Hole		
8,626.0	8,626.0	8,626.0	Perforated Liner	11/14/2014	8,712.0	8,714.0	Niobrara, Original Hole		
8,711.9	8,711.9	8,711.9	Perforated Liner	11/14/2014	8,755.0	8,757.0	Niobrara, Original Hole		
8,797.9	8,797.9	8,797.9	Perforated Liner	11/14/2014	8,798.0	8,800.0	Niobrara, Original Hole		
8,883.9	8,883.9	8,883.9	Perforated Liner	11/14/2014	8,841.0	8,843.0	Niobrara, Original Hole		
8,974.1	8,974.1	8,974.1	Perforated Liner	11/14/2014	8,884.0	8,886.0	Niobrara, Original Hole		
9,055.1	9,055.1	9,055.1	Perforated Liner	11/14/2014	8,927.0	8,929.0	Niobrara, Original Hole		
9,141.1	9,141.1	9,141.1	Perforated Liner	11/14/2014	8,974.0	8,976.0	Niobrara, Original Hole		
9,227.0	9,227.0	9,227.0	Perforated Liner	11/14/2014	9,013.0	9,015.0	Niobrara, Original Hole		
9,313.0	9,313.0	9,313.0	Perforated Liner	11/14/2014	9,055.0	9,057.0	Niobrara, Original Hole		
9,399.0	9,399.0	9,399.0	Perforated Liner	11/14/2014	9,098.0	9,100.0	Niobrara, Original Hole		
9,484.9	9,484.9	9,484.9	Perforated Liner	11/14/2014	9,141.0	9,143.0	Niobrara, Original Hole		
9,570.9	9,570.9	9,570.9	Perforated Liner	11/14/2014	9,184.0	9,186.0	Niobrara, Original Hole		
9,653.9	9,653.9	9,653.9	Perforated Liner	11/14/2014	9,227.0	9,229.0	Niobrara, Original Hole		
9,744.1	9,744.1	9,744.1	Perforated Liner	11/14/2014	9,270.0	9,272.0	Niobrara, Original Hole		
9,828.1	9,828.1	9,828.1	Perforated Liner	11/14/2014	9,270.0	9,272.0	Niobrara, Original Hole		
9,898.3	9,898.3	9,898.3	Perforated Liner	11/14/2014	9,313.0	9,315.0	Niobrara, Original Hole		
9,938.0	9,938.0	9,938.0	Perforated Liner	11/14/2014	9,356.0	9,358.0	Niobrara, Original Hole		
			Perforated Liner	11/14/2014	9,399.0	9,401.0	Niobrara, Original Hole		
			Perforated Liner	11/14/2014	9,442.0	9,444.0	Niobrara, Original Hole		
			Perforated Liner	11/14/2014	9,485.0	9,487.0	Niobrara, Original Hole		
			Perforated Liner	11/13/2014	9,528.0	9,530.0	Niobrara, Original Hole		
			Perforated Liner	11/13/2014	9,571.0	9,573.0	Niobrara, Original Hole		
			Perforated Liner	11/13/2014	9,613.0	9,615.0	Niobrara, Original Hole		
			Perforated Liner	11/12/2014	9,654.0	9,656.0	Niobrara, Original Hole		
			Perforated Liner	11/12/2014	9,704.0	9,706.0	Niobrara, Original Hole		
			Perforated Liner	11/12/2014	9,744.0	9,746.0	Niobrara, Original Hole		
			Perforated Liner	11/10/2014	9,785.0	9,787.0	Niobrara, Original Hole		
			Perforated Liner	11/10/2014	9,828.0	9,830.0	Niobrara, Original Hole		
			Perforated Liner	11/10/2014	9,871.0	9,873.0	Niobrara, Original Hole		



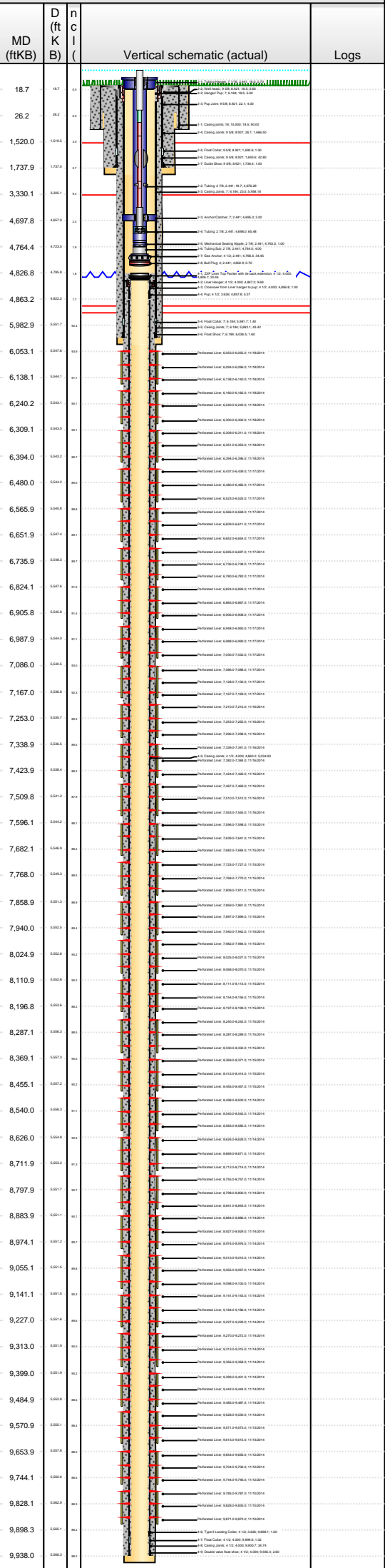
# Lease Review All - Frac Summary

## Well Name: HORSETAIL 02D-0204

API Number 051233938300	WPC ID 1CO0761118	Well Permit Number	Field Name Wildcat	County Weld	State CO
Well Configuration Type Lateral/Horizontal	Orig KB Elv (ft) 4,796.50	Ground Elevation (ft) 4,778.00	Casing Flange Elevation (ft)	Tubing Head Elevation (ft)	Total Depth (ftKB) 9,948.0
Original Spud Date 10/7/2014	Completion Date 11/18/2014	Asset Group Redtail	Responsible Engineer Charles Ohlson	N/S Dist (ft) 330.0	N/S Ref FNL
				E/W Dist (ft) 750.0	E/W Ref FWL
Lot	Quarter 1 NW	Quarter 2 NW	Quarter 3	Quarter 4	Section 2
					Section Suffix
					Section Type
			Township 10 N	Township N/S Dir	Range 57 W

Lateral/Horizontal - Original Hole, 3/6/2015 9:52:44 AM

### Stimulations & Treatments



#### Sand Frac on 11/10/2014 06:00

Comment  
Treatment End Date:11/18/2014; Number of staged intervals: 30; Number of perms: 1080; Min frac gradient: 0.73 psi/ft; 85070 bbl YF822LpH XL Gel, 91499 bbl Linear Gel, 17513 bbl Slickwater, 376 bbl 15% HCL

Total Clean Volu...	Vol Slurry Tot (bbl)	Proppant Desig...	Proppant Frm (lb)	P Max (psi)	Avg Treat...	Avg Treat...	Max Tre...	Frac Gr...
88952.30	93469.50	4,890,000.0	4,178,731.0	7,991.0	3,611.0	43.00	57.00	

Total Add Amount  
Proppant 20/40 WS 4088075 lb; Proppant 40/70 WS 90656 lb

#### Stim/Treat Fluids

Fluid Name  
YF822LpH XL Gel; Linear Gel; 15% HCL

#### Stim/Treat Stages

##### Interval 1

Stg #	Start Date	Top (ftKB)	Btm (ftKB)	Vol Clean...	Vol Slurry...	Comment
1	11/10/2014	9,785.0	9,873.0	3253.20	3427.80	YF822LpH XL Gel:2319 bbl; Linear Gel:2616 bbl; Slickwater:611 bbl; 15% HCL (Cut to 7.5% on the fly):13 bbl

#### Stim/Treat Additives

Stg #	Add	Type	Amount	Units	Sand Size
1	Proppant	20/40 WS	159,302.0	lb	20/40
1	Proppant	40/70 WS	2,605.0	lb	40/70

##### Interval 2

Stg #	Start Date	Top (ftKB)	Btm (ftKB)	Vol Clean...	Vol Slurry...	Comment
2	11/12/2014	9,654.0	9,746.0	3395.90	3512.80	YF822LpH XL Gel:1894 bbl; Linear Gel:2361 bbl; Slickwater:1009 bbl; 15% HCL (Cut to 7.5% on the fly):12 bbl

#### Stim/Treat Additives

Stg #	Add	Type	Amount	Units	Sand Size
2	Proppant	20/40 WS	105,239.0	lb	20/40
2	Proppant	40/70 WS	3,094.0	lb	40/70

##### Interval 3

Stg #	Start Date	Top (ftKB)	Btm (ftKB)	Vol Clean...	Vol Slurry...	Comment
3	11/13/2014	9,528.0	9,615.0	3223.70	3339.90	YF822LpH XL Gel:2277 bbl; Linear Gel:2575 bbl; Slickwater:597 bbl; 15% HCL (Cut to 7.5% on the fly):14 bbl

#### Stim/Treat Additives

Stg #	Add	Type	Amount	Units	Sand Size
3	Proppant	20/40 WS	104,758.0	lb	20/40
3	Proppant	40/70 WS	3,042.0	lb	40/70

##### Interval 4

Stg #	Start Date	Top (ftKB)	Btm (ftKB)	Vol Clean...	Vol Slurry...	Comment
4	11/13/2014	9,399.0	9,487.0	2679.00	2787.00	YF822LpH XL Gel:1711 bbl; Linear Gel:2152 bbl; Slickwater:493 bbl; 15% HCL (Cut to 7.5% on the fly):12 bbl

#### Stim/Treat Additives

Stg #	Add	Type	Amount	Units	Sand Size
4	Proppant	20/40 WS	97,003.0	lb	20/40
4	Proppant	40/70 WS	2,680.0	lb	40/70

##### Interval 5

Stg #	Start Date	Top (ftKB)	Btm (ftKB)	Vol Clean...	Vol Slurry...	Comment
5	11/14/2014	9,270.0	9,358.0	3212.90	3389.70	YF822LpH XL Gel:2135 bbl; Linear Gel:2433 bbl; Slickwater:754 bbl; 15% HCL (Cut to 7.5% on the fly):12 bbl

#### Stim/Treat Additives

Stg #	Add	Type	Amount	Units	Sand Size
5	Proppant	20/40 WS	160,668.0	lb	20/40
5	Proppant	40/70 WS	3,134.0	lb	40/70

##### Interval 6

Stg #	Start Date	Top (ftKB)	Btm (ftKB)	Vol Clean...	Vol Slurry...	Comment
6	11/14/2014	9,141.0	9,229.0	2975.50	3140.20	YF822LpH XL Gel:2067 bbl; Linear Gel:2364 bbl; Slickwater:578 bbl; 15% HCL (Cut to 7.5% on the fly):12 bbl

#### Stim/Treat Additives

Stg #	Add	Type	Amount	Units	Sand Size
6	Proppant	20/40 WS	149,218.0	lb	20/40
6	Proppant	40/70 WS	3,113.0	lb	40/70

##### Interval 7

Stg #	Start Date	Top (ftKB)	Btm (ftKB)	Vol Clean...	Vol Slurry...	Comment
7	11/14/2014	9,013.0	9,100.0	3038.20	3215.00	YF822LpH XL Gel:2138 bbl; Linear Gel:2435 bbl; Slickwater:582 bbl; 15% HCL (Cut to 7.5% on the fly):13 bbl

#### Stim/Treat Additives

Stg #	Add	Type	Amount	Units	Sand Size
7	Proppant	20/40 WS	160,879.0	lb	20/40
7	Proppant	40/70 WS	3,002.0	lb	40/70

##### Interval 8

Stg #	Start Date	Top (ftKB)	Btm (ftKB)	Vol Clean...	Vol Slurry...	Comment
8	11/14/2014	8,884.0	8,976.0	3031.40	3207.40	YF822LpH XL Gel:2134 bbl; Linear Gel:2431 bbl; Slickwater:580 bbl; 15% HCL (Cut to 7.5% on the fly):12 bbl

#### Stim/Treat Additives

Stg #	Add	Type	Amount	Units	Sand Size
8	Proppant	20/40 WS	160,257.0	lb	20/40



# Lease Review All - Frac Summary

## Well Name: HORSETAIL 02D-0204

API Number 051233938300	WPC ID 1CO0761118	Well Permit Number	Field Name Wildcat	County Weld	State CO
Well Configuration Type Lateral/Horizontal	Orig KB Elv (ft) 4,796.50	Ground Elevation (ft) 4,778.00	Casing Flange Elevation (ft)	Tubing Head Elevation (ft)	Total Depth (ftKB) 9,948.0
Original Spud Date 10/7/2014	Completion Date 11/18/2014	Asset Group Redtail	Responsible Engineer Charles Ohlson	N/S Dist (ft) 330.0	N/S Ref FNL
Lot	Quarter 1 NW	Quarter 2 NW	Quarter 3	Quarter 4	E/W Dist (ft) 750.0
			Section 2	Section Suffix	E/W Ref FWL
			Section Type	Township 10 N	Township N/S Dir
				Range 57 W	Range E/W Dir
					Meridian

Lateral/Horizontal - Original Hole, 3/6/2015 9:52:46 AM		Stim/Treat Additives							
MD (ftKB)	D (ftKB)	nc	l	Stg #	Add	Type	Amount	Units	Sand Size
18.7	18.7	18.7	18.7	8	Proppant	40/70 WS	3,000.0	lb	40/70
26.2	26.2	26.2	26.2	<b>Interval 9</b>					
1,520.0	1,520.0	1,520.0	1,520.0	9	Proppant	20/40 WS	160,651.0	lb	20/40
1,737.9	1,737.9	1,737.9	1,737.9	9	Proppant	40/70 WS	3,022.0	lb	40/70
3,330.1	3,330.1	3,330.1	3,330.1	<b>Interval 10</b>					
4,697.8	4,697.8	4,697.8	4,697.8	10	Proppant	20/40 WS	61,881.0	lb	20/40
4,764.4	4,764.4	4,764.4	4,764.4	10	Proppant	40/70 WS	2,971.0	lb	40/70
4,826.8	4,826.8	4,826.8	4,826.8	<b>Interval 11</b>					
4,863.2	4,863.2	4,863.2	4,863.2	11	Proppant	20/40 WS	161,014.0	lb	20/40
5,982.9	5,982.9	5,982.9	5,982.9	11	Proppant	40/70 WS	3,050.0	lb	40/70
6,053.1	6,053.1	6,053.1	6,053.1	<b>Interval 12</b>					
6,138.1	6,138.1	6,138.1	6,138.1	12	Proppant	20/40 WS	159,573.0	lb	20/40
6,240.2	6,240.2	6,240.2	6,240.2	12	Proppant	40/70 WS	3,018.0	lb	40/70
6,309.1	6,309.1	6,309.1	6,309.1	<b>Interval 13</b>					
6,394.0	6,394.0	6,394.0	6,394.0	13	Proppant	20/40 WS	146,917.0	lb	20/40
6,480.0	6,480.0	6,480.0	6,480.0	13	Proppant	40/70 WS	3,059.0	lb	40/70
6,565.9	6,565.9	6,565.9	6,565.9	<b>Interval 14</b>					
6,651.9	6,651.9	6,651.9	6,651.9	14	Proppant	20/40 WS	108,130.0	lb	20/40
6,735.9	6,735.9	6,735.9	6,735.9	14	Proppant	40/70 WS	3,088.0	lb	40/70
6,821.1	6,821.1	6,821.1	6,821.1	<b>Interval 15</b>					
6,905.8	6,905.8	6,905.8	6,905.8	15	Proppant	20/40 WS	164,203.0	lb	20/40
6,987.9	6,987.9	6,987.9	6,987.9	15	Proppant	40/70 WS	3,170.0	lb	40/70
7,086.0	7,086.0	7,086.0	7,086.0	<b>Interval 16</b>					
7,167.0	7,167.0	7,167.0	7,167.0	16	Proppant	20/40 WS	158,820.0	lb	20/40
7,253.0	7,253.0	7,253.0	7,253.0	16	Proppant	40/70 WS	3,149.0	lb	40/70
7,338.9	7,338.9	7,338.9	7,338.9	<b>Interval 17</b>					
7,423.9	7,423.9	7,423.9	7,423.9	17	Proppant	20/40 WS	136,856.0	lb	20/40
7,509.8	7,509.8	7,509.8	7,509.8	17	Proppant	40/70 WS	2,944.0	lb	40/70
7,596.1	7,596.1	7,596.1	7,596.1	<b>Interval 18</b>					
7,682.1	7,682.1	7,682.1	7,682.1	18	Proppant	20/40 WS	136,856.0	lb	20/40
7,768.0	7,768.0	7,768.0	7,768.0	18	Proppant	40/70 WS	2,944.0	lb	40/70
7,858.9	7,858.9	7,858.9	7,858.9	<b>Interval 19</b>					
7,940.0	7,940.0	7,940.0	7,940.0	19	Proppant	20/40 WS	136,856.0	lb	20/40
8,024.9	8,024.9	8,024.9	8,024.9	19	Proppant	40/70 WS	2,944.0	lb	40/70
8,110.9	8,110.9	8,110.9	8,110.9	<b>Interval 20</b>					
8,196.8	8,196.8	8,196.8	8,196.8	20	Proppant	20/40 WS	136,856.0	lb	20/40
8,287.1	8,287.1	8,287.1	8,287.1	20	Proppant	40/70 WS	2,944.0	lb	40/70
8,369.1	8,369.1	8,369.1	8,369.1	<b>Interval 21</b>					
8,455.1	8,455.1	8,455.1	8,455.1	21	Proppant	20/40 WS	136,856.0	lb	20/40
8,540.0	8,540.0	8,540.0	8,540.0	21	Proppant	40/70 WS	2,944.0	lb	40/70
8,626.0	8,626.0	8,626.0	8,626.0	<b>Interval 22</b>					
8,711.9	8,711.9	8,711.9	8,711.9	22	Proppant	20/40 WS	136,856.0	lb	20/40
8,797.9	8,797.9	8,797.9	8,797.9	22	Proppant	40/70 WS	2,944.0	lb	40/70
8,883.9	8,883.9	8,883.9	8,883.9	<b>Interval 23</b>					
8,974.1	8,974.1	8,974.1	8,974.1	23	Proppant	20/40 WS	136,856.0	lb	20/40
9,055.1	9,055.1	9,055.1	9,055.1	23	Proppant	40/70 WS	2,944.0	lb	40/70
9,141.1	9,141.1	9,141.1	9,141.1	<b>Interval 24</b>					
9,227.0	9,227.0	9,227.0	9,227.0	24	Proppant	20/40 WS	136,856.0	lb	20/40
9,313.0	9,313.0	9,313.0	9,313.0	24	Proppant	40/70 WS	2,944.0	lb	40/70
9,399.0	9,399.0	9,399.0	9,399.0	<b>Interval 25</b>					
9,484.9	9,484.9	9,484.9	9,484.9	25	Proppant	20/40 WS	136,856.0	lb	20/40
9,570.9	9,570.9	9,570.9	9,570.9	25	Proppant	40/70 WS	2,944.0	lb	40/70
9,653.9	9,653.9	9,653.9	9,653.9	<b>Interval 26</b>					
9,744.1	9,744.1	9,744.1	9,744.1	26	Proppant	20/40 WS	136,856.0	lb	20/40
9,828.1	9,828.1	9,828.1	9,828.1	26	Proppant	40/70 WS	2,944.0	lb	40/70
9,898.3	9,898.3	9,898.3	9,898.3	<b>Interval 27</b>					
9,938.0	9,938.0	9,938.0	9,938.0	27	Proppant	20/40 WS	136,856.0	lb	20/40
				27	Proppant	40/70 WS	2,944.0	lb	40/70



# Lease Review All - Frac Summary

## Well Name: HORSETAIL 02D-0204

API Number 051233938300	WPC ID 1CO0761118	Well Permit Number	Field Name Wildcat	County Weld	State CO
Well Configuration Type Lateral/Horizontal	Orig KB Elv (ft) 4,796.50	Ground Elevation (ft) 4,778.00	Casing Flange Elevation (ft)	Tubing Head Elevation (ft)	Total Depth (ftKB) 9,948.0
Original Spud Date 10/7/2014	Completion Date 11/18/2014	Asset Group Redtail	Responsible Engineer Charles Ohlson	N/S Dist (ft) 330.0	N/S Ref FNL
Lot	Quarter 1 NW	Quarter 2 NW	Quarter 3	Quarter 4	Section 2
			Section Suffix	Section Type	Township 10 N
					Township N/S Dir Range 57 W
					Range E/W Dir Meridian 750.0 FWL

Lateral/Horizontal - Original Hole, 3/6/2015 9:52:48 AM

MD (ftKB)	D (ftKB)	nc (ftKB)	Vertical schematic (actual)	Logs	Stim/Treat Stages																																																	
18.7	18.7	18.7			<table border="1"> <tr> <th colspan="6">Interval 18</th> </tr> <tr> <th>Stg #</th> <th>Start Date</th> <th>Top (ftKB)</th> <th>Btm (ftKB)</th> <th>Vol Clean...</th> <th>Vol Slurry...</th> </tr> <tr> <td>18</td> <td>11/16/2014</td> <td>7,596.0</td> <td>7,684.0</td> <td>2294.50</td> <td>2380.50</td> </tr> <tr> <td colspan="6">Comment YF822LpH XL Gel:1546 bbl; Linear Gel:1843 bbl; Slickwater:440 bbl; 15% HCL (Cut to 7.5% on the fly):12 bbl</td> </tr> <tr> <th colspan="6">Stim/Treat Additives</th> </tr> <tr> <th>Stg #</th> <th>Add</th> <th>Type</th> <th>Amount</th> <th>Units</th> <th>Sand Size</th> </tr> <tr> <td>18</td> <td>Proppant</td> <td>20/40 WS</td> <td>76,532.0</td> <td>lb</td> <td>20/40</td> </tr> <tr> <td>18</td> <td>Proppant</td> <td>40/70 WS</td> <td>3,120.0</td> <td>lb</td> <td>40/70</td> </tr> </table>	Interval 18						Stg #	Start Date	Top (ftKB)	Btm (ftKB)	Vol Clean...	Vol Slurry...	18	11/16/2014	7,596.0	7,684.0	2294.50	2380.50	Comment YF822LpH XL Gel:1546 bbl; Linear Gel:1843 bbl; Slickwater:440 bbl; 15% HCL (Cut to 7.5% on the fly):12 bbl						Stim/Treat Additives						Stg #	Add	Type	Amount	Units	Sand Size	18	Proppant	20/40 WS	76,532.0	lb	20/40	18	Proppant	40/70 WS	3,120.0	lb	40/70	
Interval 18																																																						
Stg #	Start Date	Top (ftKB)		Btm (ftKB)	Vol Clean...	Vol Slurry...																																																
18	11/16/2014	7,596.0		7,684.0	2294.50	2380.50																																																
Comment YF822LpH XL Gel:1546 bbl; Linear Gel:1843 bbl; Slickwater:440 bbl; 15% HCL (Cut to 7.5% on the fly):12 bbl																																																						
Stim/Treat Additives																																																						
Stg #	Add	Type		Amount	Units	Sand Size																																																
18	Proppant	20/40 WS		76,532.0	lb	20/40																																																
18	Proppant	40/70 WS		3,120.0	lb	40/70																																																
1,520.0	1,520.0	1,520.0				<table border="1"> <tr> <th colspan="6">Interval 19</th> </tr> <tr> <th>Stg #</th> <th>Start Date</th> <th>Top (ftKB)</th> <th>Btm (ftKB)</th> <th>Vol Clean...</th> <th>Vol Slurry...</th> </tr> <tr> <td>19</td> <td>11/16/2014</td> <td>7,467.0</td> <td>7,555.0</td> <td>2362.80</td> <td>2427.50</td> </tr> <tr> <td colspan="6">Comment YF822LpH XL Gel:1429 bbl; Linear Gel:1727 bbl; Slickwater:609 bbl; 15% HCL (Cut to 7.5% on the fly):12 bbl</td> </tr> <tr> <th colspan="6">Stim/Treat Additives</th> </tr> <tr> <th>Stg #</th> <th>Add</th> <th>Type</th> <th>Amount</th> <th>Units</th> <th>Sand Size</th> </tr> <tr> <td>19</td> <td>Proppant</td> <td>20/40 WS</td> <td>56,914.0</td> <td>lb</td> <td>20/40</td> </tr> <tr> <td>19</td> <td>Proppant</td> <td>40/70 WS</td> <td>3,093.0</td> <td>lb</td> <td>40/70</td> </tr> </table>	Interval 19						Stg #	Start Date	Top (ftKB)	Btm (ftKB)	Vol Clean...	Vol Slurry...	19	11/16/2014	7,467.0	7,555.0	2362.80	2427.50	Comment YF822LpH XL Gel:1429 bbl; Linear Gel:1727 bbl; Slickwater:609 bbl; 15% HCL (Cut to 7.5% on the fly):12 bbl						Stim/Treat Additives						Stg #	Add	Type	Amount	Units	Sand Size	19	Proppant	20/40 WS	56,914.0	lb	20/40	19	Proppant	40/70 WS	3,093.0	lb	40/70
Interval 19																																																						
Stg #	Start Date	Top (ftKB)		Btm (ftKB)	Vol Clean...	Vol Slurry...																																																
19	11/16/2014	7,467.0		7,555.0	2362.80	2427.50																																																
Comment YF822LpH XL Gel:1429 bbl; Linear Gel:1727 bbl; Slickwater:609 bbl; 15% HCL (Cut to 7.5% on the fly):12 bbl																																																						
Stim/Treat Additives																																																						
Stg #	Add	Type		Amount	Units	Sand Size																																																
19	Proppant	20/40 WS		56,914.0	lb	20/40																																																
19	Proppant	40/70 WS		3,093.0	lb	40/70																																																
1,737.9	1,737.9	1,737.9			<table border="1"> <tr> <th colspan="6">Interval 20</th> </tr> <tr> <th>Stg #</th> <th>Start Date</th> <th>Top (ftKB)</th> <th>Btm (ftKB)</th> <th>Vol Clean...</th> <th>Vol Slurry...</th> </tr> <tr> <td>20</td> <td>11/16/2014</td> <td>7,339.0</td> <td>7,426.0</td> <td>2406.10</td> <td>2463.30</td> </tr> <tr> <td colspan="6">Comment YF822LpH XL Gel:1394 bbl; Linear Gel:1692 bbl; Slickwater:690 bbl; 15% HCL (Cut to 7.5% on the fly):12 bbl</td> </tr> <tr> <th colspan="6">Stim/Treat Additives</th> </tr> <tr> <th>Stg #</th> <th>Add</th> <th>Type</th> <th>Amount</th> <th>Units</th> <th>Sand Size</th> </tr> <tr> <td>20</td> <td>Proppant</td> <td>20/40 WS</td> <td>49,889.0</td> <td>lb</td> <td>20/40</td> </tr> <tr> <td>20</td> <td>Proppant</td> <td>40/70 WS</td> <td>3,175.0</td> <td>lb</td> <td>40/70</td> </tr> </table>	Interval 20						Stg #	Start Date	Top (ftKB)	Btm (ftKB)	Vol Clean...	Vol Slurry...	20	11/16/2014	7,339.0	7,426.0	2406.10	2463.30	Comment YF822LpH XL Gel:1394 bbl; Linear Gel:1692 bbl; Slickwater:690 bbl; 15% HCL (Cut to 7.5% on the fly):12 bbl						Stim/Treat Additives						Stg #	Add	Type	Amount	Units	Sand Size	20	Proppant	20/40 WS	49,889.0	lb	20/40	20	Proppant	40/70 WS	3,175.0	lb	40/70	
Interval 20																																																						
Stg #	Start Date	Top (ftKB)	Btm (ftKB)	Vol Clean...	Vol Slurry...																																																	
20	11/16/2014	7,339.0	7,426.0	2406.10	2463.30																																																	
Comment YF822LpH XL Gel:1394 bbl; Linear Gel:1692 bbl; Slickwater:690 bbl; 15% HCL (Cut to 7.5% on the fly):12 bbl																																																						
Stim/Treat Additives																																																						
Stg #	Add	Type	Amount	Units	Sand Size																																																	
20	Proppant	20/40 WS	49,889.0	lb	20/40																																																	
20	Proppant	40/70 WS	3,175.0	lb	40/70																																																	
3,330.1	3,330.1	3,330.1			<table border="1"> <tr> <th colspan="6">Interval 21</th> </tr> <tr> <th>Stg #</th> <th>Start Date</th> <th>Top (ftKB)</th> <th>Btm (ftKB)</th> <th>Vol Clean...</th> <th>Vol Slurry...</th> </tr> <tr> <td>21</td> <td>11/16/2014</td> <td>7,210.0</td> <td>7,298.0</td> <td>3242.40</td> <td>3412.90</td> </tr> <tr> <td colspan="6">Comment YF822LpH XL Gel:2568 bbl; Linear Gel:2568 bbl; Slickwater:652 bbl; 15% HCL (Cut to 7.5% on the fly):12 bbl</td> </tr> <tr> <th colspan="6">Stim/Treat Additives</th> </tr> <tr> <th>Stg #</th> <th>Add</th> <th>Type</th> <th>Amount</th> <th>Units</th> <th>Sand Size</th> </tr> <tr> <td>21</td> <td>Proppant</td> <td>20/40 WS</td> <td>155,068.0</td> <td>lb</td> <td>20/40</td> </tr> <tr> <td>21</td> <td>Proppant</td> <td>40/70 WS</td> <td>2,876.0</td> <td>lb</td> <td>40/70</td> </tr> </table>	Interval 21						Stg #	Start Date	Top (ftKB)	Btm (ftKB)	Vol Clean...	Vol Slurry...	21	11/16/2014	7,210.0	7,298.0	3242.40	3412.90	Comment YF822LpH XL Gel:2568 bbl; Linear Gel:2568 bbl; Slickwater:652 bbl; 15% HCL (Cut to 7.5% on the fly):12 bbl						Stim/Treat Additives						Stg #	Add	Type	Amount	Units	Sand Size	21	Proppant	20/40 WS	155,068.0	lb	20/40	21	Proppant	40/70 WS	2,876.0	lb	40/70	
Interval 21																																																						
Stg #	Start Date	Top (ftKB)	Btm (ftKB)	Vol Clean...	Vol Slurry...																																																	
21	11/16/2014	7,210.0	7,298.0	3242.40	3412.90																																																	
Comment YF822LpH XL Gel:2568 bbl; Linear Gel:2568 bbl; Slickwater:652 bbl; 15% HCL (Cut to 7.5% on the fly):12 bbl																																																						
Stim/Treat Additives																																																						
Stg #	Add	Type	Amount	Units	Sand Size																																																	
21	Proppant	20/40 WS	155,068.0	lb	20/40																																																	
21	Proppant	40/70 WS	2,876.0	lb	40/70																																																	
4,697.8	4,697.8	4,697.8			<table border="1"> <tr> <th colspan="6">Interval 22</th> </tr> <tr> <th>Stg #</th> <th>Start Date</th> <th>Top (ftKB)</th> <th>Btm (ftKB)</th> <th>Vol Clean...</th> <th>Vol Slurry...</th> </tr> <tr> <td>22</td> <td>11/17/2014</td> <td>7,086.0</td> <td>7,169.0</td> <td>3113.90</td> <td>3285.90</td> </tr> <tr> <td colspan="6">Comment YF822LpH XL Gel:2531 bbl; Linear Gel:2546 bbl; Slickwater:551 bbl; 15% HCL (Cut to 7.5% on the fly):11 bbl</td> </tr> <tr> <th colspan="6">Stim/Treat Additives</th> </tr> <tr> <th>Stg #</th> <th>Add</th> <th>Type</th> <th>Amount</th> <th>Units</th> <th>Sand Size</th> </tr> <tr> <td>22</td> <td>Proppant</td> <td>20/40 WS</td> <td>156,451.0</td> <td>lb</td> <td>20/40</td> </tr> <tr> <td>22</td> <td>Proppant</td> <td>40/70 WS</td> <td>3,034.0</td> <td>lb</td> <td>40/70</td> </tr> </table>	Interval 22						Stg #	Start Date	Top (ftKB)	Btm (ftKB)	Vol Clean...	Vol Slurry...	22	11/17/2014	7,086.0	7,169.0	3113.90	3285.90	Comment YF822LpH XL Gel:2531 bbl; Linear Gel:2546 bbl; Slickwater:551 bbl; 15% HCL (Cut to 7.5% on the fly):11 bbl						Stim/Treat Additives						Stg #	Add	Type	Amount	Units	Sand Size	22	Proppant	20/40 WS	156,451.0	lb	20/40	22	Proppant	40/70 WS	3,034.0	lb	40/70	
Interval 22																																																						
Stg #	Start Date	Top (ftKB)	Btm (ftKB)	Vol Clean...	Vol Slurry...																																																	
22	11/17/2014	7,086.0	7,169.0	3113.90	3285.90																																																	
Comment YF822LpH XL Gel:2531 bbl; Linear Gel:2546 bbl; Slickwater:551 bbl; 15% HCL (Cut to 7.5% on the fly):11 bbl																																																						
Stim/Treat Additives																																																						
Stg #	Add	Type	Amount	Units	Sand Size																																																	
22	Proppant	20/40 WS	156,451.0	lb	20/40																																																	
22	Proppant	40/70 WS	3,034.0	lb	40/70																																																	
4,764.4	4,764.4	4,764.4			<table border="1"> <tr> <th colspan="6">Interval 23</th> </tr> <tr> <th>Stg #</th> <th>Start Date</th> <th>Top (ftKB)</th> <th>Btm (ftKB)</th> <th>Vol Clean...</th> <th>Vol Slurry...</th> </tr> <tr> <td>23</td> <td>11/17/2014</td> <td>6,948.0</td> <td>7,032.0</td> <td>2928.00</td> <td>3084.90</td> </tr> <tr> <td colspan="6">Comment YF822LpH XL Gel:2343 bbl; Linear Gel:2343 bbl; Slickwater:558 bbl; 15% HCL (Cut to 7.5% on the fly):11 bbl</td> </tr> <tr> <th colspan="6">Stim/Treat Additives</th> </tr> <tr> <th>Stg #</th> <th>Add</th> <th>Type</th> <th>Amount</th> <th>Units</th> <th>Sand Size</th> </tr> <tr> <td>23</td> <td>Proppant</td> <td>20/40 WS</td> <td>142,404.0</td> <td>lb</td> <td>20/40</td> </tr> <tr> <td>23</td> <td>Proppant</td> <td>40/70 WS</td> <td>3,027.0</td> <td>lb</td> <td>40/70</td> </tr> </table>	Interval 23						Stg #	Start Date	Top (ftKB)	Btm (ftKB)	Vol Clean...	Vol Slurry...	23	11/17/2014	6,948.0	7,032.0	2928.00	3084.90	Comment YF822LpH XL Gel:2343 bbl; Linear Gel:2343 bbl; Slickwater:558 bbl; 15% HCL (Cut to 7.5% on the fly):11 bbl						Stim/Treat Additives						Stg #	Add	Type	Amount	Units	Sand Size	23	Proppant	20/40 WS	142,404.0	lb	20/40	23	Proppant	40/70 WS	3,027.0	lb	40/70	
Interval 23																																																						
Stg #	Start Date	Top (ftKB)	Btm (ftKB)	Vol Clean...	Vol Slurry...																																																	
23	11/17/2014	6,948.0	7,032.0	2928.00	3084.90																																																	
Comment YF822LpH XL Gel:2343 bbl; Linear Gel:2343 bbl; Slickwater:558 bbl; 15% HCL (Cut to 7.5% on the fly):11 bbl																																																						
Stim/Treat Additives																																																						
Stg #	Add	Type	Amount	Units	Sand Size																																																	
23	Proppant	20/40 WS	142,404.0	lb	20/40																																																	
23	Proppant	40/70 WS	3,027.0	lb	40/70																																																	
4,826.8	4,826.8	4,826.8			<table border="1"> <tr> <th colspan="6">Interval 24</th> </tr> <tr> <th>Stg #</th> <th>Start Date</th> <th>Top (ftKB)</th> <th>Btm (ftKB)</th> <th>Vol Clean...</th> <th>Vol Slurry...</th> </tr> <tr> <td>24</td> <td>11/17/2014</td> <td>6,824.0</td> <td>6,908.0</td> <td>2647.50</td> <td>2799.40</td> </tr> <tr> <td colspan="6">Comment YF822LpH XL Gel:2069 bbl; Linear Gel:2069 bbl; Slickwater:554 bbl; 15% HCL (Cut to 7.5% on the fly):14 bbl</td> </tr> <tr> <th colspan="6">Stim/Treat Additives</th> </tr> <tr> <th>Stg #</th> <th>Add</th> <th>Type</th> <th>Amount</th> <th>Units</th> <th>Sand Size</th> </tr> <tr> <td>24</td> <td>Proppant</td> <td>20/40 WS</td> <td>137,806.0</td> <td>lb</td> <td>20/40</td> </tr> <tr> <td>24</td> <td>Proppant</td> <td>40/70 WS</td> <td>3,002.0</td> <td>lb</td> <td>40/70</td> </tr> </table>	Interval 24						Stg #	Start Date	Top (ftKB)	Btm (ftKB)	Vol Clean...	Vol Slurry...	24	11/17/2014	6,824.0	6,908.0	2647.50	2799.40	Comment YF822LpH XL Gel:2069 bbl; Linear Gel:2069 bbl; Slickwater:554 bbl; 15% HCL (Cut to 7.5% on the fly):14 bbl						Stim/Treat Additives						Stg #	Add	Type	Amount	Units	Sand Size	24	Proppant	20/40 WS	137,806.0	lb	20/40	24	Proppant	40/70 WS	3,002.0	lb	40/70	
Interval 24																																																						
Stg #	Start Date	Top (ftKB)	Btm (ftKB)	Vol Clean...	Vol Slurry...																																																	
24	11/17/2014	6,824.0	6,908.0	2647.50	2799.40																																																	
Comment YF822LpH XL Gel:2069 bbl; Linear Gel:2069 bbl; Slickwater:554 bbl; 15% HCL (Cut to 7.5% on the fly):14 bbl																																																						
Stim/Treat Additives																																																						
Stg #	Add	Type	Amount	Units	Sand Size																																																	
24	Proppant	20/40 WS	137,806.0	lb	20/40																																																	
24	Proppant	40/70 WS	3,002.0	lb	40/70																																																	
4,863.2	4,863.2	4,863.2			<table border="1"> <tr> <th colspan="6">Interval 25</th> </tr> <tr> <th>Stg #</th> <th>Start Date</th> <th>Top (ftKB)</th> <th>Btm (ftKB)</th> <th>Vol Clean...</th> <th>Vol Slurry...</th> </tr> <tr> <td>25</td> <td>11/17/2014</td> <td>6,695.0</td> <td>6,782.0</td> <td>3093.80</td> <td>3271.80</td> </tr> <tr> <td colspan="6">Comment YF822LpH XL Gel:2513 bbl; Linear Gel:2513 bbl; Slickwater:551 bbl; 15% HCL (Cut to 7.5% on the fly):13 bbl</td> </tr> <tr> <th colspan="6">Stim/Treat Additives</th> </tr> <tr> <th>Stg #</th> <th>Add</th> <th>Type</th> <th>Amount</th> <th>Units</th> <th>Sand Size</th> </tr> <tr> <td>25</td> <td>Proppant</td> <td>20/40 WS</td> <td>165,926.0</td> <td>lb</td> <td>20/40</td> </tr> <tr> <td>25</td> <td>Proppant</td> <td>40/70 WS</td> <td>3,009.0</td> <td>lb</td> <td>40/70</td> </tr> </table>	Interval 25						Stg #	Start Date	Top (ftKB)	Btm (ftKB)	Vol Clean...	Vol Slurry...	25	11/17/2014	6,695.0	6,782.0	3093.80	3271.80	Comment YF822LpH XL Gel:2513 bbl; Linear Gel:2513 bbl; Slickwater:551 bbl; 15% HCL (Cut to 7.5% on the fly):13 bbl						Stim/Treat Additives						Stg #	Add	Type	Amount	Units	Sand Size	25	Proppant	20/40 WS	165,926.0	lb	20/40	25	Proppant	40/70 WS	3,009.0	lb	40/70	
Interval 25																																																						
Stg #	Start Date	Top (ftKB)	Btm (ftKB)	Vol Clean...	Vol Slurry...																																																	
25	11/17/2014	6,695.0	6,782.0	3093.80	3271.80																																																	
Comment YF822LpH XL Gel:2513 bbl; Linear Gel:2513 bbl; Slickwater:551 bbl; 15% HCL (Cut to 7.5% on the fly):13 bbl																																																						
Stim/Treat Additives																																																						
Stg #	Add	Type	Amount	Units	Sand Size																																																	
25	Proppant	20/40 WS	165,926.0	lb	20/40																																																	
25	Proppant	40/70 WS	3,009.0	lb	40/70																																																	
5,982.9	5,982.9	5,982.9			<table border="1"> <tr> <th colspan="6">Interval 26</th> </tr> <tr> <th>Stg #</th> <th>Start Date</th> <th>Top (ftKB)</th> <th>Btm (ftKB)</th> <th>Vol Clean...</th> <th>Vol Slurry...</th> </tr> <tr> <td>26</td> <td>11/17/2014</td> <td>6,566.0</td> <td>6,654.0</td> <td>3029.60</td> <td>3202.90</td> </tr> <tr> <td colspan="6">Comment YF822LpH XL Gel:2600 bbl; Linear Gel:2600 bbl; Slickwater:399 bbl; 15% HCL (Cut to 7.5% on the fly):14 bbl</td> </tr> <tr> <th colspan="6">Stim/Treat Additives</th> </tr> <tr> <th>Stg #</th> <th>Add</th> <th>Type</th> <th>Amount</th> <th>Units</th> <th>Sand Size</th> </tr> <tr> <td>26</td> <td>Proppant</td> <td>20/40 WS</td> <td>159,632.0</td> <td>lb</td> <td>20/40</td> </tr> <tr> <td>26</td> <td>Proppant</td> <td>40/70 WS</td> <td>2,985.0</td> <td>lb</td> <td>40/70</td> </tr> </table>	Interval 26						Stg #	Start Date	Top (ftKB)	Btm (ftKB)	Vol Clean...	Vol Slurry...	26	11/17/2014	6,566.0	6,654.0	3029.60	3202.90	Comment YF822LpH XL Gel:2600 bbl; Linear Gel:2600 bbl; Slickwater:399 bbl; 15% HCL (Cut to 7.5% on the fly):14 bbl						Stim/Treat Additives						Stg #	Add	Type	Amount	Units	Sand Size	26	Proppant	20/40 WS	159,632.0	lb	20/40	26	Proppant	40/70 WS	2,985.0	lb	40/70	
Interval 26																																																						
Stg #	Start Date	Top (ftKB)	Btm (ftKB)	Vol Clean...	Vol Slurry...																																																	
26	11/17/2014	6,566.0	6,654.0	3029.60	3202.90																																																	
Comment YF822LpH XL Gel:2600 bbl; Linear Gel:2600 bbl; Slickwater:399 bbl; 15% HCL (Cut to 7.5% on the fly):14 bbl																																																						
Stim/Treat Additives																																																						
Stg #	Add	Type	Amount	Units	Sand Size																																																	
26	Proppant	20/40 WS	159,632.0	lb	20/40																																																	
26	Proppant	40/70 WS	2,985.0	lb	40/70																																																	
6,053.1	6,053.1	6,053.1																																																				
6,138.1	6,138.1	6,138.1																																																				
6,240.2	6,240.2	6,240.2																																																				
6,309.1	6,309.1	6,309.1																																																				
6,394.0	6,394.0	6,394.0																																																				
6,480.0	6,480.0	6,480.0																																																				
6,565.9	6,565.9	6,565.9																																																				
6,651.9	6,651.9	6,651.9																																																				
6,735.9	6,735.9	6,735.9																																																				
6,824.1	6,824.1	6,824.1																																																				
6,905.8	6,905.8	6,905.8																																																				
6,987.9	6,987.9	6,987.9																																																				
7,086.0	7,086.0	7,086.0																																																				
7,167.0	7,167.0	7,167.0																																																				
7,253.0	7,253.0	7,253.0																																																				
7,338.9	7,338.9	7,338.9																																																				
7,423.9	7,423.9	7,423.9																																																				
7,509.8	7,509.8	7,509.8																																																				
7,596.1	7,596.1	7,596.1																																																				
7,682.1	7,682.1	7,682.1																																																				
7,768.0	7,768.0	7,768.0																																																				
7,858.9	7,858.9	7,858.9																																																				
7,940.0	7,940.0	7,940.0																																																				
8,024.9	8,024.9	8,024.9																																																				
8,110.9	8,110.9	8,110.9																																																				
8,196.8	8,196.8	8,196.8																																																				
8,287.1	8,287.1	8,287.1																																																				
8,369.1	8,369.1	8,369.1																																																				
8,455.1	8,455.1	8,455.1																																																				
8,540.0	8,540.0	8,540.0																																																				
8,626.0	8,626.0	8,626.0																																																				
8,711.9	8,711.9	8,711.9																																																				
8,797.9	8,797.9	8,797.9																																																				
8,883.9	8,883.9	8,883.9																																																				
8,974.1	8,974.1	8,974.1																																																				
9,055.1	9,055.1	9,055.1																																																				
9,141.1	9,141.1	9,141.1																																																				
9,227.0	9,227.0	9,227.0																																																				
9,313.0	9,313.0	9,313.0																																																				
9,399.0	9,399.0	9,399.0																																																				
9,484.9	9,484.9	9,484.9																																																				
9,570.9	9,570.9	9,570.9																																																				
9,653.9	9,653.9	9,653.9																																																				
9,744.1	9,744.1	9,744.1																																																				
9,828.1	9,828.1	9,828.1																																																				
9,898.3	9,898.3	9,898.3																																																				
9,938.0	9,938.0	9,938.0																																																				



# Lease Review All - Frac Summary

## Well Name: HORSETAIL 02D-0204

API Number 051233938300	WPC ID 1CO0761118	Well Permit Number	Field Name Wildcat	County Weld	State CO
Well Configuration Type Lateral/Horizontal	Orig KB Elv (ft) 4,796.50	Ground Elevation (ft) 4,778.00	Casing Flange Elevation (ft)	Tubing Head Elevation (ft)	Total Depth (ftKB) 9,948.0
Original Spud Date 10/7/2014	Completion Date 11/18/2014	Asset Group Redtail	Responsible Engineer Charles Ohlson	N/S Dist (ft) 330.0	N/S Ref FNL
Lot	Quarter 1 NW	Quarter 2 NW	Quarter 3	Quarter 4	Section 2
			Section Suffix	Section Type	Township 10 N
					Township N/S Dir Range 57 W
					Range E/W Dir Meridian FWL

Lateral/Horizontal - Original Hole, 3/6/2015 9:52:50 AM

MD (ftKB)	D (ftKB)	nc (ftKB)	Vertical schematic (actual)	Logs	Stim/Treat Stages																																																									
18.7	18.7	18.7			<b>Interval 27</b>																																																									
26.2	26.2	26.2			Stg # 27 Start Date 11/17/2014 Top (ftKB) 6,437.0 Btm (ftKB) 6,525.0 Vol Clean... 2998.50 Vol Slurry... 3173.40 Comment YF822LpH XL Gel:2434 bbl; Linear Gel:2434 bbl; Slickwater:540 bbl; 15% HCL (Cut to 7.5% on the fly):12 bbl																																																									
1,520.0	1,520.0	1,520.0			<b>Stim/Treat Additives</b>																																																									
1,737.9	1,737.9	1,737.9			Stg # 27 Proppant 20/40 WS Amount 159,126.0 lb Units 20/40																																																									
3,330.1	3,330.1	3,330.1			Stg # 27 Proppant 40/70 WS Amount 2,987.0 lb Units 40/70																																																									
4,697.8	4,697.8	4,697.8			<b>Interval 28</b>																																																									
4,764.4	4,764.4	4,764.4			Stg # 28 Start Date 11/18/2014 Top (ftKB) 6,309.0 Btm (ftKB) 6,396.0 Vol Clean... 2976.90 Vol Slurry... 3151.00 Comment YF822LpH XL Gel:2419 bbl; Linear Gel:2419 bbl; Slickwater:539 bbl; 15% HCL (Cut to 7.5% on the fly):13 bbl																																																									
4,826.8	4,826.8	4,826.8			<b>Stim/Treat Additives</b>																																																									
4,863.2	4,863.2	4,863.2			Stg # 28 Proppant 20/40 WS Amount 158,348.0 lb Units 20/40																																																									
5,982.9	5,982.9	5,982.9			Stg # 28 Proppant 40/70 WS Amount 3,068.0 lb Units 40/70																																																									
6,053.1	6,053.1	6,053.1	<b>Interval 29</b>																																																											
6,138.1	6,138.1	6,138.1	Stg # 29 Start Date 11/18/2014 Top (ftKB) 6,180.0 Btm (ftKB) 6,302.0 Vol Clean... 3016.50 Vol Slurry... 3192.30 Comment YF822LpH XL Gel:2431 bbl; Linear Gel:2431 bbl; Slickwater:561 bbl; 15% HCL (Cut to 7.5% on the fly):14 bbl																																																											
6,240.2	6,240.2	6,240.2	<b>Stim/Treat Additives</b>																																																											
6,309.1	6,309.1	6,309.1	Stg # 29 Proppant 20/40 WS Amount 159,724.0 lb Units 20/40																																																											
6,394.0	6,394.0	6,394.0	Stg # 29 Proppant 40/70 WS Amount 3,101.0 lb Units 40/70																																																											
6,480.0	6,480.0	6,480.0	<b>Interval 30</b>																																																											
6,565.9	6,565.9	6,565.9	Stg # 30 Start Date 11/18/2014 Top (ftKB) 6,053.0 Btm (ftKB) 6,140.0 Vol Clean... 2961.10 Vol Slurry... 3131.40 Comment YF822LpH XL Gel:23961 bbl; Linear Gel:23961 bbl; Slickwater:545 bbl; 15% HCL (Cut to 7.5% on the fly):15 bbl																																																											
6,651.9	6,651.9	6,651.9	<b>Stim/Treat Additives</b>																																																											
6,735.9	6,735.9	6,735.9	Stg # 30 Proppant 20/40 WS Amount 154,886.0 lb Units 20/40																																																											
6,824.1	6,824.1	6,824.1	Stg # 30 Proppant 40/70 WS Amount 3,038.0 lb Units 40/70																																																											
6,905.8	6,905.8	6,905.8	<b>Tubing - Production set at 4,803.6ftKB on 1/24/2015 06:00</b>																																																											
6,987.9	6,987.9	6,987.9	Set Depth (ftKB) 4,803.6 Comment Run Date 1/24/2015 Pull Date																																																											
7,086.0	7,086.0	7,086.0	<table border="1"> <thead> <tr> <th>Item Des</th> <th>OD (in)</th> <th>ID (in)</th> <th>Len (ft)</th> <th>Top (ftKB)</th> <th>Btm (ftKB)</th> </tr> </thead> <tbody> <tr> <td>Tubing Hanger</td> <td>7 1/16</td> <td>2.441</td> <td>0.70</td> <td>18.0</td> <td>18.7</td> </tr> <tr> <td>Tubing</td> <td>2 7/8</td> <td>2.441</td> <td>4,676.29</td> <td>18.7</td> <td>4,695.0</td> </tr> <tr> <td>Anchor/Catcher</td> <td>7</td> <td>2.441</td> <td>3.00</td> <td>4,695.0</td> <td>4,698.0</td> </tr> <tr> <td>Tubing</td> <td>2 7/8</td> <td>2.441</td> <td>65.48</td> <td>4,698.0</td> <td>4,763.5</td> </tr> <tr> <td>Mechanical Seating Nipple</td> <td>2 7/8</td> <td>2.441</td> <td>1.00</td> <td>4,763.5</td> <td>4,764.5</td> </tr> <tr> <td>Tubing Sub</td> <td>2 7/8</td> <td>2.441</td> <td>4.00</td> <td>4,764.5</td> <td>4,768.5</td> </tr> <tr> <td>Gas Anchor</td> <td>4 1/2</td> <td>2.441</td> <td>34.45</td> <td>4,768.5</td> <td>4,802.9</td> </tr> <tr> <td>Bull Plug</td> <td>4</td> <td>2.441</td> <td>0.70</td> <td>4,802.9</td> <td>4,803.6</td> </tr> </tbody> </table>	Item Des	OD (in)	ID (in)	Len (ft)	Top (ftKB)	Btm (ftKB)	Tubing Hanger	7 1/16	2.441	0.70	18.0	18.7	Tubing	2 7/8	2.441	4,676.29	18.7	4,695.0	Anchor/Catcher	7	2.441	3.00	4,695.0	4,698.0	Tubing	2 7/8	2.441	65.48	4,698.0	4,763.5	Mechanical Seating Nipple	2 7/8	2.441	1.00	4,763.5	4,764.5	Tubing Sub	2 7/8	2.441	4.00	4,764.5	4,768.5	Gas Anchor	4 1/2	2.441	34.45	4,768.5	4,802.9	Bull Plug	4	2.441	0.70	4,802.9	4,803.6					
Item Des	OD (in)	ID (in)	Len (ft)	Top (ftKB)	Btm (ftKB)																																																									
Tubing Hanger	7 1/16	2.441	0.70	18.0	18.7																																																									
Tubing	2 7/8	2.441	4,676.29	18.7	4,695.0																																																									
Anchor/Catcher	7	2.441	3.00	4,695.0	4,698.0																																																									
Tubing	2 7/8	2.441	65.48	4,698.0	4,763.5																																																									
Mechanical Seating Nipple	2 7/8	2.441	1.00	4,763.5	4,764.5																																																									
Tubing Sub	2 7/8	2.441	4.00	4,764.5	4,768.5																																																									
Gas Anchor	4 1/2	2.441	34.45	4,768.5	4,802.9																																																									
Bull Plug	4	2.441	0.70	4,802.9	4,803.6																																																									
7,167.0	7,167.0	7,167.0	<b>Rod Strings</b>																																																											
7,253.0	7,253.0	7,253.0	<b>Special on 1/24/2015 08:02</b>																																																											
7,338.9	7,338.9	7,338.9	Rod Description Run Date 1/24/2015 Pull Date																																																											
7,423.9	7,423.9	7,423.9	<table border="1"> <thead> <tr> <th>Item Des</th> <th>OD (in)</th> <th>Len (ft)</th> <th>Top (ftKB)</th> <th>Btm (ftKB)</th> </tr> </thead> <tbody> <tr> <td>Polished Rod</td> <td>1 1/2</td> <td>26.00</td> <td>0.0</td> <td>26.0</td> </tr> <tr> <td>Pony Rod KD 2', 4', 6'</td> <td>7/8</td> <td>12.00</td> <td>26.0</td> <td>38.0</td> </tr> <tr> <td>Rod</td> <td>7/8</td> <td>1,450.00</td> <td>38.0</td> <td>1,488.0</td> </tr> <tr> <td>7/8" X 2.5" KING COBRA W/4-GUIDES PER ROD</td> <td>7/8</td> <td>500.00</td> <td>1,488.0</td> <td>1,988.0</td> </tr> <tr> <td>3/4" X 2.5" KING COBRA W/4-GUIDES PER ROD</td> <td>7/8</td> <td>500.00</td> <td>1,988.0</td> <td>2,488.0</td> </tr> <tr> <td>Rod</td> <td>3/4</td> <td>1,925.00</td> <td>2,488.0</td> <td>4,413.0</td> </tr> <tr> <td>Sinker Bar</td> <td>1 1/2</td> <td>300.00</td> <td>4,413.0</td> <td>4,713.0</td> </tr> <tr> <td>2 1/2" X 2 X24 TYPE PUMP RHWBM MECHANICAL P</td> <td>2 1/2</td> <td>24.00</td> <td>4,713.0</td> <td>4,737.0</td> </tr> </tbody> </table>	Item Des	OD (in)	Len (ft)	Top (ftKB)	Btm (ftKB)	Polished Rod	1 1/2	26.00	0.0	26.0	Pony Rod KD 2', 4', 6'	7/8	12.00	26.0	38.0	Rod	7/8	1,450.00	38.0	1,488.0	7/8" X 2.5" KING COBRA W/4-GUIDES PER ROD	7/8	500.00	1,488.0	1,988.0	3/4" X 2.5" KING COBRA W/4-GUIDES PER ROD	7/8	500.00	1,988.0	2,488.0	Rod	3/4	1,925.00	2,488.0	4,413.0	Sinker Bar	1 1/2	300.00	4,413.0	4,713.0	2 1/2" X 2 X24 TYPE PUMP RHWBM MECHANICAL P	2 1/2	24.00	4,713.0	4,737.0														
Item Des	OD (in)	Len (ft)	Top (ftKB)	Btm (ftKB)																																																										
Polished Rod	1 1/2	26.00	0.0	26.0																																																										
Pony Rod KD 2', 4', 6'	7/8	12.00	26.0	38.0																																																										
Rod	7/8	1,450.00	38.0	1,488.0																																																										
7/8" X 2.5" KING COBRA W/4-GUIDES PER ROD	7/8	500.00	1,488.0	1,988.0																																																										
3/4" X 2.5" KING COBRA W/4-GUIDES PER ROD	7/8	500.00	1,988.0	2,488.0																																																										
Rod	3/4	1,925.00	2,488.0	4,413.0																																																										
Sinker Bar	1 1/2	300.00	4,413.0	4,713.0																																																										
2 1/2" X 2 X24 TYPE PUMP RHWBM MECHANICAL P	2 1/2	24.00	4,713.0	4,737.0																																																										
7,509.8	7,509.8	7,509.8	<b>Other Strings</b>																																																											
7,596.1	7,596.1	7,596.1	Set Depth (ftKB) Comment Run Date Pull Date																																																											
7,682.1	7,682.1	7,682.1	<table border="1"> <thead> <tr> <th>Item Des</th> <th>OD (in)</th> <th>Len (ft)</th> <th>Top (ftKB)</th> <th>Btm (ftKB)</th> </tr> </thead> <tbody> <tr> <td>CFP</td> <td>4</td> <td>11/18/2014</td> <td>11/25/2014</td> <td>6,158.0</td> <td>6,160.0</td> </tr> <tr> <td>CFP</td> <td>4</td> <td>11/18/2014</td> <td>11/25/2014</td> <td>6,306.0</td> <td>6,308.0</td> </tr> <tr> <td>CFP</td> <td>4</td> <td>11/18/2014</td> <td>11/25/2014</td> <td>6,423.0</td> <td>6,425.0</td> </tr> <tr> <td>CFP</td> <td>4</td> <td>11/17/2014</td> <td>11/25/2014</td> <td>6,548.0</td> <td>6,550.0</td> </tr> <tr> <td>CFP</td> <td>4</td> <td>11/17/2014</td> <td>11/25/2014</td> <td>6,673.0</td> <td>6,675.0</td> </tr> <tr> <td>CFP</td> <td>4</td> <td>11/17/2014</td> <td>11/26/2014</td> <td>6,802.0</td> <td>6,804.0</td> </tr> <tr> <td>CFP</td> <td>4</td> <td>11/17/2014</td> <td>11/26/2014</td> <td>6,928.0</td> <td>6,930.0</td> </tr> <tr> <td>CFP</td> <td>4</td> <td>11/17/2014</td> <td>11/26/2014</td> <td>7,060.0</td> <td>7,062.0</td> </tr> <tr> <td>CFP</td> <td>4</td> <td>11/17/2014</td> <td>11/26/2014</td> <td>7,188.0</td> <td>7,190.0</td> </tr> </tbody> </table>	Item Des	OD (in)	Len (ft)	Top (ftKB)	Btm (ftKB)	CFP	4	11/18/2014	11/25/2014	6,158.0	6,160.0	CFP	4	11/18/2014	11/25/2014	6,306.0	6,308.0	CFP	4	11/18/2014	11/25/2014	6,423.0	6,425.0	CFP	4	11/17/2014	11/25/2014	6,548.0	6,550.0	CFP	4	11/17/2014	11/25/2014	6,673.0	6,675.0	CFP	4	11/17/2014	11/26/2014	6,802.0	6,804.0	CFP	4	11/17/2014	11/26/2014	6,928.0	6,930.0	CFP	4	11/17/2014	11/26/2014	7,060.0	7,062.0	CFP	4	11/17/2014	11/26/2014	7,188.0	7,190.0
Item Des	OD (in)	Len (ft)	Top (ftKB)	Btm (ftKB)																																																										
CFP	4	11/18/2014	11/25/2014	6,158.0	6,160.0																																																									
CFP	4	11/18/2014	11/25/2014	6,306.0	6,308.0																																																									
CFP	4	11/18/2014	11/25/2014	6,423.0	6,425.0																																																									
CFP	4	11/17/2014	11/25/2014	6,548.0	6,550.0																																																									
CFP	4	11/17/2014	11/25/2014	6,673.0	6,675.0																																																									
CFP	4	11/17/2014	11/26/2014	6,802.0	6,804.0																																																									
CFP	4	11/17/2014	11/26/2014	6,928.0	6,930.0																																																									
CFP	4	11/17/2014	11/26/2014	7,060.0	7,062.0																																																									
CFP	4	11/17/2014	11/26/2014	7,188.0	7,190.0																																																									
7,768.0	7,768.0	7,768.0	<b>Other In Hole</b>																																																											
7,858.9	7,858.9	7,858.9	Des OD (in) Run Date Pull Date Top (ftKB) Btm (ftKB)																																																											
7,940.0	7,940.0	7,940.0	CFP 4 11/18/2014 11/25/2014 6,158.0 6,160.0																																																											
8,024.9	8,024.9	8,024.9	CFP 4 11/18/2014 11/25/2014 6,306.0 6,308.0																																																											
8,110.9	8,110.9	8,110.9	CFP 4 11/18/2014 11/25/2014 6,423.0 6,425.0																																																											
8,196.8	8,196.8	8,196.8	CFP 4 11/17/2014 11/25/2014 6,548.0 6,550.0																																																											
8,287.1	8,287.1	8,287.1	CFP 4 11/17/2014 11/25/2014 6,673.0 6,675.0																																																											
8,369.1	8,369.1	8,369.1	CFP 4 11/17/2014 11/26/2014 6,802.0 6,804.0																																																											
8,455.1	8,455.1	8,455.1	CFP 4 11/17/2014 11/26/2014 6,928.0 6,930.0																																																											
8,540.0	8,540.0	8,540.0	CFP 4 11/17/2014 11/26/2014 7,060.0 7,062.0																																																											
8,626.0	8,626.0	8,626.0	CFP 4 11/17/2014 11/26/2014 7,188.0 7,190.0																																																											
8,711.9	8,711.9	8,711.9																																																												
8,797.9	8,797.9	8,797.9																																																												
8,883.9	8,883.9	8,883.9																																																												
8,974.1	8,974.1	8,974.1																																																												
9,055.1	9,055.1	9,055.1																																																												
9,141.1	9,141.1	9,141.1																																																												
9,227.0	9,227.0	9,227.0																																																												
9,313.0	9,313.0	9,313.0																																																												
9,399.0	9,399.0	9,399.0																																																												
9,484.9	9,484.9	9,484.9																																																												
9,570.9	9,570.9	9,570.9																																																												
9,653.9	9,653.9	9,653.9																																																												
9,744.1	9,744.1	9,744.1																																																												
9,828.1	9,828.1	9,828.1																																																												
9,898.3	9,898.3	9,898.3																																																												
9,938.0	9,938.0	9,938.0																																																												

