

**BONANZA CREEK ENERGY OPERATING CO  
PO BOX 21974  
BAKERSFIELD, California**

North Platte Federal K-O-22HNB

**Cade 22**

# **Post Job Summary**

## **Cement Surface Casing**

Date Prepared: 10/21/2013  
Version: 1

Service Supervisor: BIRCHELL, DEVIN

Submitted by: HINDS, MOLLYE

# HALLIBURTON

## Wellbore Geometry

---

Job Tubulars					MD	
Type	Description	Size in	ID in	Wt lbm/ft	Top ft	Bottom ft
Casing	9 5/8" Surface Casing	9.63	8.921	36.00	0.00	1,500.00
Open Hole Section	13 1/2" Open Hole Section		13.500		0.00	1,500.00

## Pumping Schedule

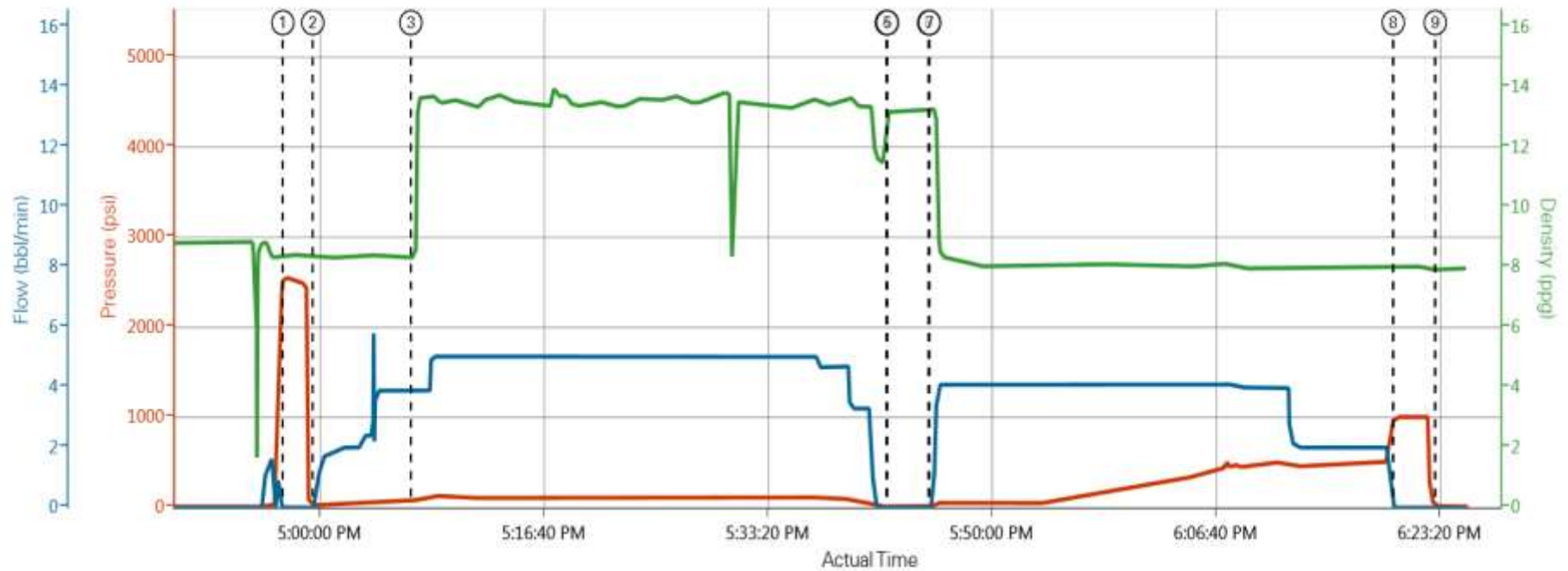
---

Stage /Plug #	Fluid #	Fluid Type	Fluid Name	Surface Density lbm/gal	Avg Rate bbl/min	Surface Volume	Downhole Volume
1	1	Spacer	Water Spacer	8.33	4.00	20.0 bbl	20.0 bbl
1	2	Cement Slurry	SwiftCem B2	13.50	5.00	526.0 sacks	526.0 sacks

# HALLIBURTON

## Data Acquisition

Bonanza Creek NPF K-O-22HNB Surface



Truck 1 Pr (psi) Truck 1 Dens (ppg) Truck 1 Stry Rt (bbl/min)

- ① Test Lines 2560,8 42,0    ③ Pump Lead Cement 79,8 38,3 9    ⑤ Clean Lines 17,13 24,0    ⑦ Pump Displacement 17,13 28,0    ⑨ End Job 15,7 98,0
- ② Pump Spacer 1 18,8 38,0    ④ Shutdown 17,13 14,0    ⑥ Drop Top Plug 17,13 26,0    ⑧ Bump Plug 1004,8 01,0

## Service Supervisor Reports

### Job Log

Date/Time	Chart #	Activity Code	Pump Rate	Cum Vol	Pump	Pressure (psig)	Comments
10/16/2013 05:30		Call Out					Called Out Cement Crew For Bonanza Creek North Platte Federal K-O-22HNB Surface
10/16/2013 08:20		Pre-Convoy Safety Meeting					Discussed Hazards On Route To Location, Weather, Other Traffic, Route
10/16/2013 08:30		Depart from Service Center or Other Site					
10/16/2013 10:00		Arrive At Loc					Arrived To Location Talked With Company Rep On Volumes, Rates, Depths, rig pulling drill pipe getting ready to run casing
10/16/2013 10:00		Wait on Customer or Customer Sub-Contractor Equip					Wait For Rig Crew to Finish Running Casing
10/16/2013 15:00		Pre-Rig Up Safety Meeting					Discussed Hazards With Cement Crew For Rigging Up Iron and Water Hoses
10/16/2013 15:10		Rig-Up Equipment					
10/16/2013 16:30		Pre-Job Safety Meeting					Discussed Job Procedures With Cement and Rig Crews
10/16/2013 16:50		Rig-Up Completed					Finished Rigging Up To The Floor And Well Head
10/16/2013 16:55		Prime Pumps					Primed Pumps and Lines For Pressure Test
10/16/2013 16:56		Pressure Test				2560.0	Test Pump and Lines to 2560 psi
10/16/2013 16:59		Pump Spacer	4	20		78.0	Pumped 20 bbls Fresh Water Spacer
10/16/2013 17:07		Pump Cement	5	164		118.0	Pumped 164 bbls ( 526sks) 13.5 ppg Slurry, Yield 1.75 ft <sup>3</sup> /sk Water 9.26 gal/sk
10/16/2013 17:42		Drop Plug					Dropped Plug With Driller Witnessing
10/16/2013 17:45		Pump Displacement	4			42.0	Pumped 118 bbls Fresh Water Displacement
10/16/2013 17:45		Clean Lines	4			42.0	Washed Pump and Lines on Plug
10/16/2013 18:06		Spacer Returns to Surface	4	84		406.0	20 bbls Fresh Water Spacer to Surface
10/16/2013 18:12		Cement Returns to Surface	4	104		500.0	14 bbls Cement Returns To Surface
10/16/2013 18:16		Slow Rate	2	110		490.0	Slowed Rate To Bump Plug
10/16/2013 18:19		Bump Plug	2	118		520.0	Bumped Plug With 520 psi Took Pressure to 1003 psi
10/16/2013 18:22		Check Floats				1003.0	Checked Floats, Floats Held With .5 bbls Back To Truck
10/16/2013 18:25		Job Complete					
10/16/2013 18:30		Post-Job Safety Meeting (Pre Rig-Down)					Discussed Hazards With Crew For Rigging Down Iron and Water Hoses
10/16/2013 18:35		Rig-Down Equipment					
10/16/2013 19:20		Rig-Down Completed					
10/16/2013 19:25		Pre-Convoy Safety Meeting					Discussed Hazards On Route To Service Center, Weather, Other Traffic, Route
10/16/2013 19:30		Depart Location for Service Center or Other Site					Thank You For Using Halliburton Energy Services

# HALLIBURTON

*The Road to Excellence Starts with Safety*

<b>Sold To #:</b> 324725	<b>Ship To #:</b> 3111922	<b>Quote #:</b>	<b>Sales Order #:</b> 900825844
--------------------------	---------------------------	-----------------	------------------------------------

<b>Customer:</b> BONANZA CREEK ENERGY OPERATING CO	<b>Customer Rep:</b>
--	----------------------

<b>Well Name:</b> North Platte Federal	<b>Well #:</b> K-O-22HNB	<b>API/UWI #:</b>
--	--------------------------	-------------------

<b>Field:</b> WATTENBERG	<b>City (SAP):</b> KERSEY	<b>County/Parish:</b> Weld	<b>State:</b> Colorado
-----------------------------	---------------------------	----------------------------	------------------------

<b>Contractor:</b> CADE	<b>Rig/Platform Name/Num:</b> Cade 22
-------------------------	---------------------------------------

<b>Job Purpose:</b> Cement Surface Casing
---

<b>Well Type:</b> Development Well	<b>Job Type:</b> Cement Surface Casing
------------------------------------	--

<b>Sales Person:</b> FLING, MATTHEW	<b>Srvc Supervisor:</b> BIRCHELL, DEVIN	<b>MBU ID Emp #:</b> 466993
-------------------------------------	---	-----------------------------

### Job Personnel

HES Emp Name	Exp Hrs	Emp #	HES Emp Name	Exp Hrs	Emp #	HES Emp Name	Exp Hrs	Emp #
BIRCHELL, DEVIN Ray	0.0	466993	CHISLUM, DENNIS	0.0	512130	MILLER, GEOFFREY Alan	0.0	460232
NESBITT, ROY Iverson	0.0	537416	SCILEPPI, JOSEPH Dean	0.0	555492	SIMMONS, KEATON J	0.0	524850

### Equipment

HES Unit #	Distance-1 way	HES Unit #	Distance-1 way	HES Unit #	Distance-1 way	HES Unit #	Distance-1 way
10246780C	45 mile	10982754C	45 mile	10988836C	45 mile	11036298	45 mile
11527037	45 mile	12010171	45 mile				

### Job

### Job Times

Formation Name	Date	Time	Time Zone
<b>Formation Depth (MD)</b> Top Bottom	<b>Called Out</b>	16 - Oct - 2013	05:30 MST
<b>Form Type</b> BHST	<b>On Location</b>	16 - Oct - 2013	10:00 MST
<b>Job depth MD</b> 1550. ft <b>Job Depth TVD</b> 1550. ft	<b>Job Started</b>	16 - Oct - 2013	17:00 MST
<b>Water Depth</b> <b>Wk Ht Above Floor</b> 5. ft	<b>Job Completed</b>	16 - Oct - 2013	18:20 MST
<b>Perforation Depth (MD)</b> From To	<b>Departed Loc</b>	16 - Oct - 2013	19:30 MST

### Well Data

Description	New / Used	Max pressure psig	Size in	ID in	Weight lbm/ft	Thread	Grade	Top MD ft	Bottom MD ft	Top TVD ft	Bottom TVD ft
13 1/2" Open Hole Section				13.5				.	1500.		
9 5/8" Surface Casing	Unknown		9.625	8.921	36.		J-55	.	1500.		

### Fluid Data

#### Stage/Plug #: 1

Fluid #	Stage Type	Fluid Name	Qty	Qty uom	Mixing Density lbm/gal	Yield ft <sup>3</sup> /sk	Mix Fluid Gal/sk	Rate bbl/min	Total Mix Fluid Gal/sk
1	Water Spacer		20.00	bbl	8.33	.0	.0	4.0	
2	SwiftCem B2	SWIFTCEM (TM) SYSTEM (452990)	526.0	sacks	13.5	1.75	9.26	5.0	9.26
	9.26 Gal	FRESH WATER							

<i>The Information Stated Herein Is Correct</i>	<b>Customer Representative Signature</b>
---	--