

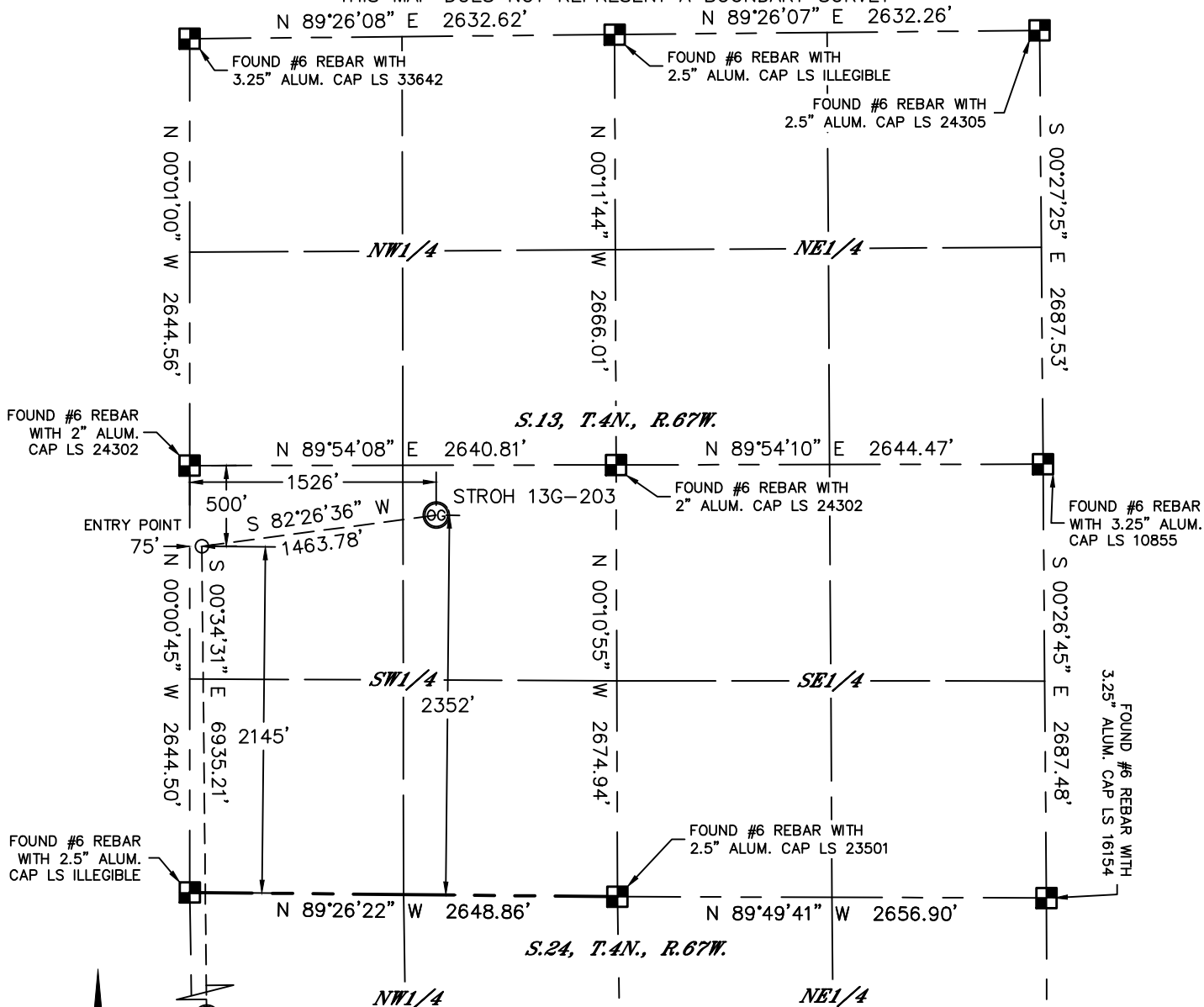


Lat40°, Inc. 1635 Foxtrail Drive, Suite 325 Loveland, CO 970-776-3321

WELL LOCATION CERTIFICATE

SECTION: 13
TOWNSHIP: 4N
RANGE: 67W

THIS MAP DOES NOT REPRESENT A BOUNDARY SURVEY



In accordance with a request from Mac Neumann with PDC ENERGY Lat40°, Inc. has determined the surface location of the STROH 13G-203 to be 2352' from the SOUTH line and 1526' from the WEST line as measured at right angles from the section lines of Section 13, Township 4 North, Range 67 West and the bottom hole to be 500' from the SOUTH line and 75' from the WEST line as measured at right angles from the section lines of Section 24, Township 4 North, Range 67 West of the Sixth Principal Meridian, County of Weld, State of Colorado.

I hereby state that this Well Location Certificate was prepared by me, or under my direct supervision, that the fieldwork was completed on 1/24/2014, for and on behalf of PDC ENERGY. That this is not a Land Survey Plat or an Improvement Survey Plat, and that it is not to be relied upon for establishment of fence, building, or other future improvement lines.

SURFACE LOCATION
LAT: 40.31103°N
LONG: 104.84319°W
PDOP: 1.9
ELEV: 4806'
1/4,1/4: NE1/4SW1/4

BOTTOM HOLE
LAT: 40.29150°N
LONG: 104.84833°W
1/4,1/4: SW1/4SW1/4

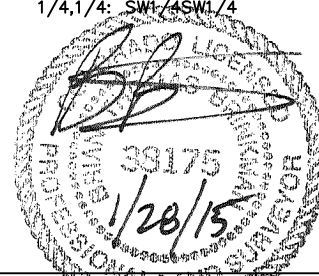
ENTRY POINT
LAT: 40.31053°N
LONG: 104.84840°W
1/4,1/4: NW1/4SW1/4

LEGEND

- = ALIQUOT MONUMENT AS DESCRIBED
- = CALCULATED POSITION

SHEET 1 OF 2

Brian T. Brinkman—On behalf of Lat40°, Inc.
Colorado Licensed Professional
Land Surveyor No. 38175
DATE: 1/28/2015
PROJECT#: 2013156



NOTE:

- 1) Bearings shown are Grid Bearings of the Colorado State Plane Coordinate System, North Zone, North American Datum 1983/2007. The lineal dimensions as contained herein are based upon the "U.S. Survey Foot."
- 2) Ground elevations are based on an observed GPS elevation (NAVD 1988 DATUM).
- 3) IMPROVEMENTS: See LOCATION DRAWING for all visible improvements within 500' of disturbed area.
- 4) SURFACE USE: CROP LAND
- 5) INSTRUMENT OPERATOR: ADAM KELLY
- 6) NEAREST CULTURAL ITEMS:
BUILDING: ±2478' NW
BUILDING UNIT: ±2478' NW
HIGH OCCUPANCY BUILDING UNIT: ±4880' NE
DESIGNATED OUTSIDE ACTIVITY AREA: 5280'+
PUBLIC ROAD: (CR 23) 1503' W
ABOVEGROUND UTILITY: 1480' W
RAILROAD: ±2577' SE
PROPERTY LINE: 310' N

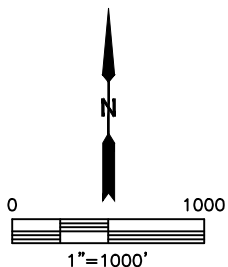
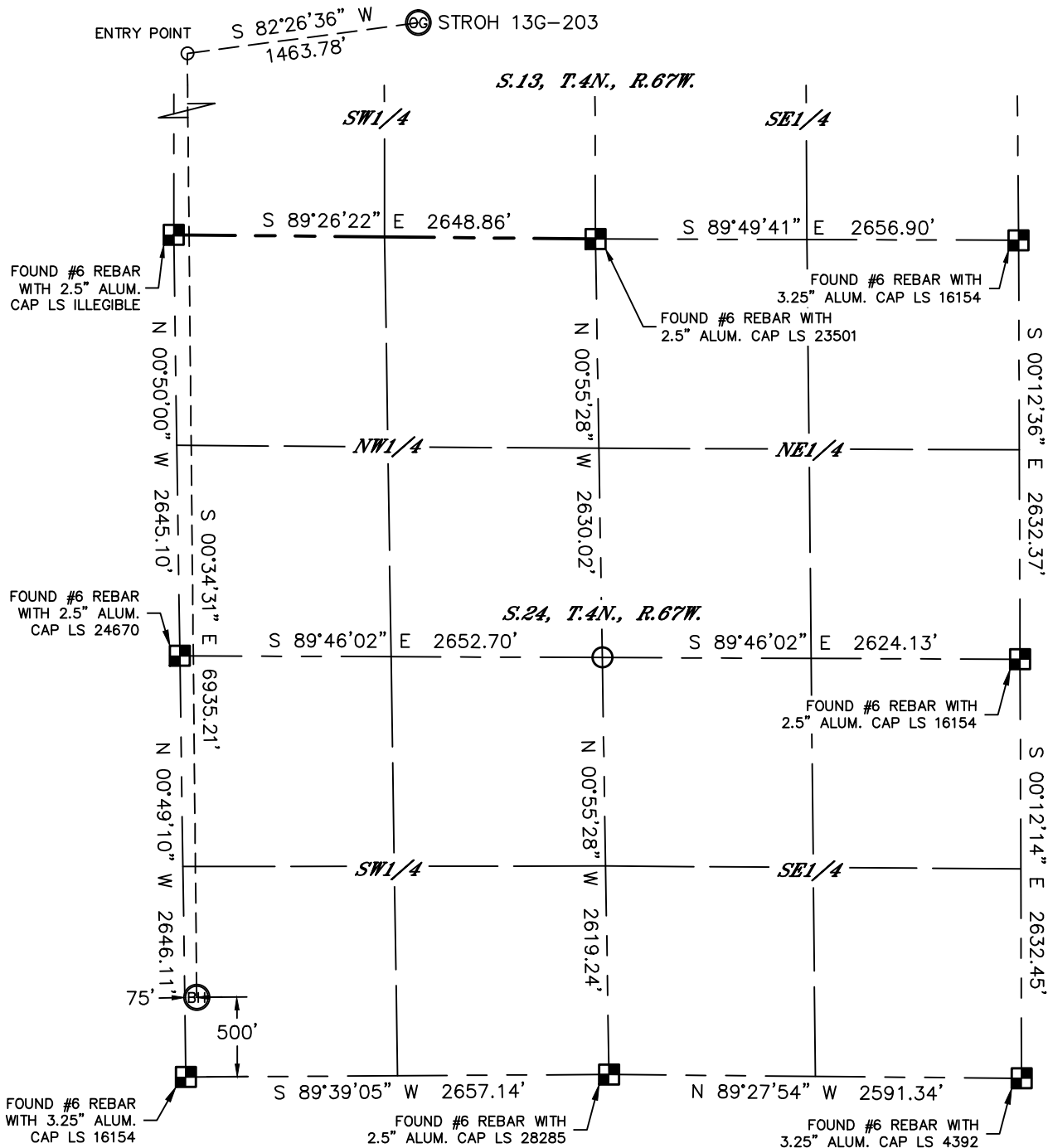


Lat40°, Inc. 1635 Foxtrail Drive, Suite 325 Loveland, CO 970-776-3321

WELL LOCATION CERTIFICATE

THIS MAP DOES NOT REPRESENT A BOUNDARY SURVEY

SECTION: 13
TOWNSHIP: 4N
RANGE: 67W



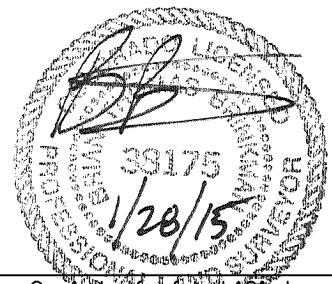
LEGEND

- = ALIQUOT MONUMENT AS DESCRIBED
- = CALCULATED POSITION

SHEET 2 OF 2

Brian T. Brinkman—On behalf of Lat40°, Inc.
Colorado Licensed Professional
Land Surveyor No. 38175

DATE: 1/28/2015
PROJECT#: 2013156



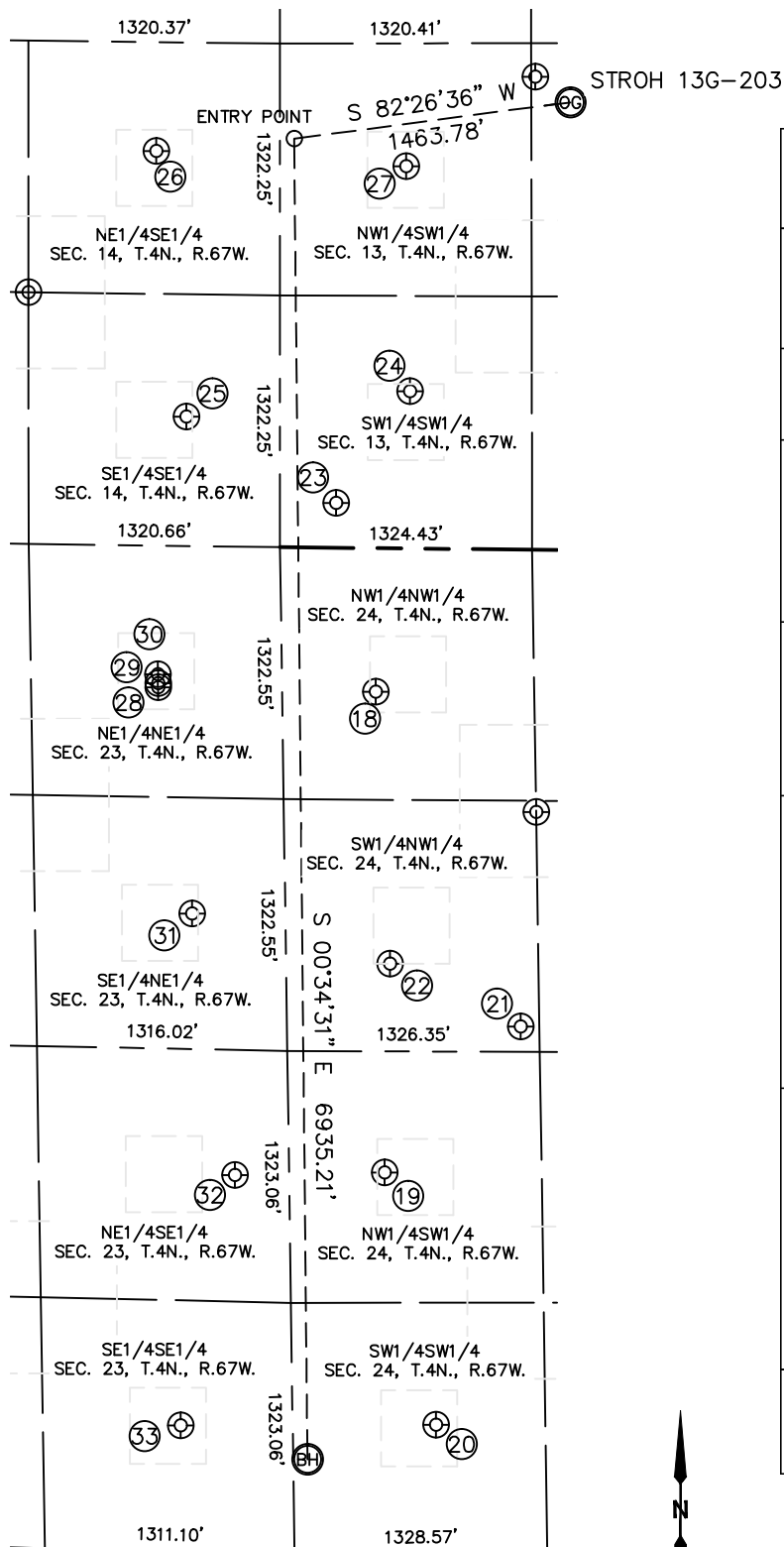


Lat40°, Inc. 1635 Foxtrail Drive, Suite 325 Loveland, CO 970-776-3321

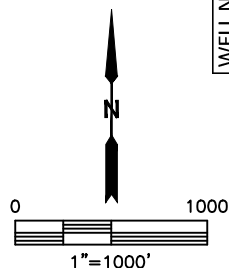
SITE SKETCH

STROH 13G-203

SECTION: 13
TOWNSHIP: 4N
RANGE: 67W



WELL NO.	WELL NAME	SHL FOOTAGE				SHL LAT°	SHL LONG°	PDOP	ELEV (FT.)	1/4/1/4
		754	FNL	FSL	FWL					
18	STROH 24-22					40.30256	-104.84693	2.0	4819	NWNW
19	MATT 1	2005	FSL			40.29563	-104.84683	2.4	4729	NWSW
20	SOPHIE 1	677	FSL			40.29199	-104.84591	2.1	4732	SWSW
21	RORY 1-7I	2505	FNL			40.29772	-104.84426	1.8	4726	SWNW
22	STROH 24-12	2181	FNL			40.29864	-104.84670	1.7	4813	SWNW
23	STROH PC O13-79HN	236	FSL			40.30528	-104.84766	3.1	4844	SWSW
24	UPRC 13-13E	825	FSL			40.30688	-104.84625	1.6	4836	SWSW
25	LHI 14-44	676	FSL			40.30654	-104.85047	2.0	4839	SESE
26	LHI 14-41	2071	FSL			40.31037	-104.85100	1.9	4813	NESE
27	UPRC 13-12E	2006	FSL			40.31012	-104.84629	2.0	4816	NWSW
28	EHRlich PC 023-67HN	745	FNL			40.30264	-104.85104	2.3	4834	NENE
29	EHRlich PC 023-69HN	722	FNL			40.30270	-104.85103	1.9	4835	NENE
30	EHRlich 23-11	675	FNL			40.30283	-104.85104	1.9	4834	NENE
31	EHRlich 23-14	1930	FNL			40.29938	-104.85043	2.3	4839	SENE
32	EHRlich 23-41	1985	FSL			40.29561	-104.84965	2.0	4776	NESE
33	WOLFSON 23-16	663	FSL			40.29200	-104.85071	2.3	4731	SESE



DATE: 1/28/2015
PROJECT#: 2013156