

# Bayswater Exploration & Production, LLC

Well Name: **Kaiser H-10HC**

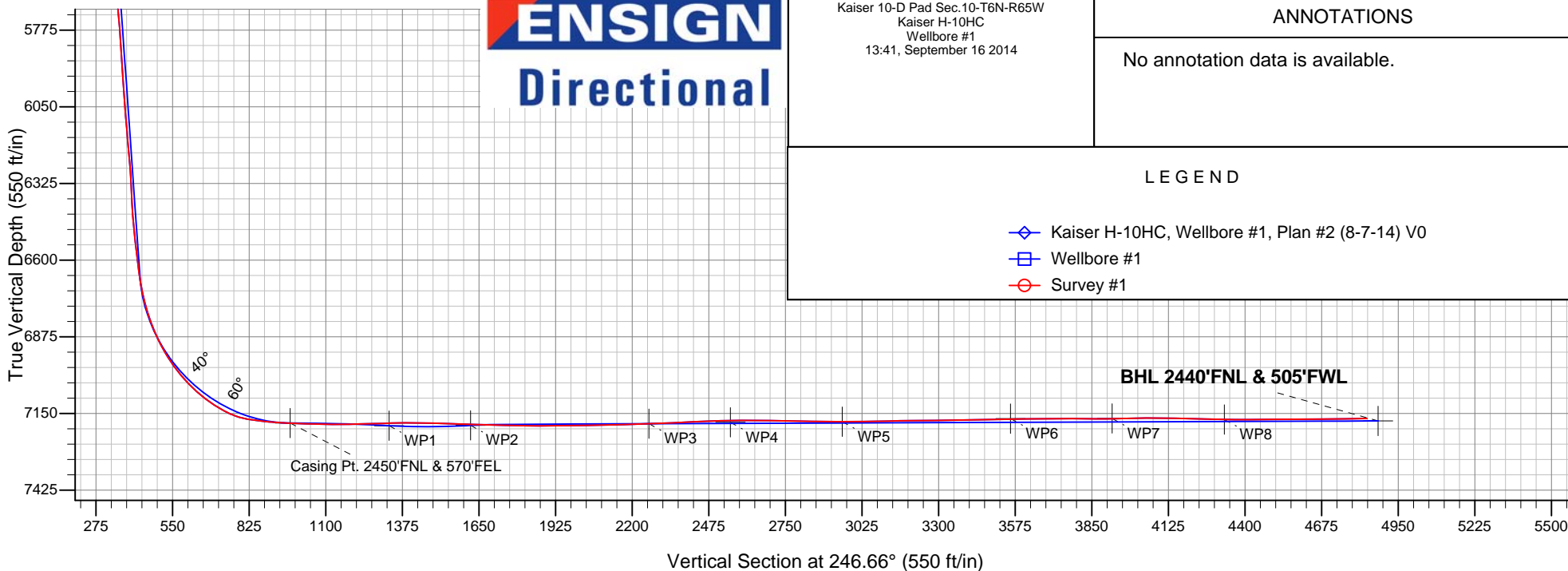
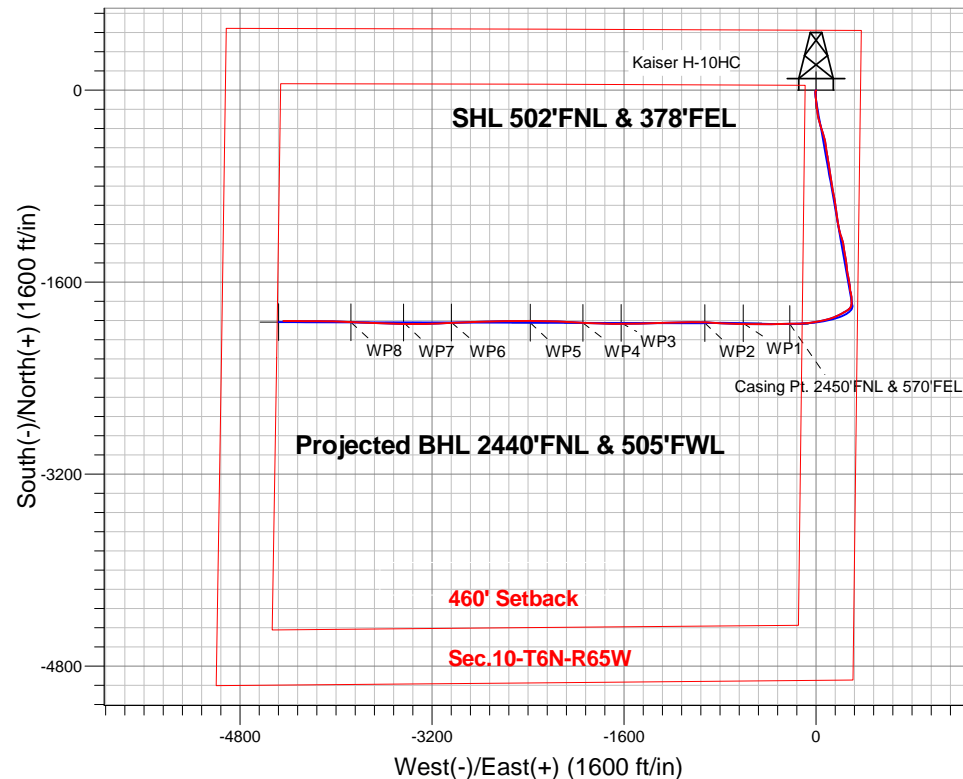
Surface Location: Kaiser 10-D Pad Sec.10-T6N-R65W  
North American Datum 1983 , US State Plane 1983 , Colorado Northern Zone

Ground Elevation: 4801.0

+N/-S	+E/-W	Northing	Easting	Latitude	Longitude	Slot
0.0	0.0	1428739.63	3238801.64	40.507117	-104.641205	
RKB - 22.5 WELL @ 4823.5ft (RKB - 22.5)						

## FINAL SURVEY

Projected Bottom Hole Location  
11995'MD 7168'TVD 1923'S & 4438'W of  
SHL 91.01 degree Incl @ 270.15 degree  
AZM





# **Bayswater Exploration & Production, LLC**

**SEC.10-T6N-R65W**

**Kaiser 10-D Pad Sec.10-T6N-R65W**

**Kaiser H-10HC**

**Wellbore #1**

**Survey: Survey #1**

## **Standard Survey Report**

**16 September, 2014**



**BAYSWATER**  
**EXPLORATION & PRODUCTION, LLC**

<b>Company:</b>	Bayswater Exploration & Production, LLC	<b>Local Co-ordinate Reference:</b>	Well Kaiser H-10HC
<b>Project:</b>	SEC.10-T6N-R65W	<b>TVD Reference:</b>	WELL @ 4823.5ft (RKB - 22.5)
<b>Site:</b>	Kaiser 10-D Pad Sec.10-T6N-R65W	<b>MD Reference:</b>	WELL @ 4823.5ft (RKB - 22.5)
<b>Well:</b>	Kaiser H-10HC	<b>North Reference:</b>	True
<b>Wellbore:</b>	Wellbore #1	<b>Survey Calculation Method:</b>	Minimum Curvature
<b>Design:</b>	Wellbore #1	<b>Database:</b>	Landmark

<b>Project</b>	SEC.10-T6N-R65W		
<b>Map System:</b>	US State Plane 1983	<b>System Datum:</b>	Mean Sea Level
<b>Geo Datum:</b>	North American Datum 1983		Using Well Reference Point
<b>Map Zone:</b>	Colorado Northern Zone		Using geodetic scale factor

Site	Kaiser 10-D Pad Sec.10-T6N-R65W				
Site Position:		Northing:	1,428,828.36ft	Latitude:	40.507362
From:	Lat/Long	Easting:	3,238,745.72ft	Longitude:	-104.641403
Position Uncertainty:	0.0 ft	Slot Radius:	"	Grid Convergence:	0.55 °

Well	Kaiser H-10HC					
Well Position	+N/-S	0.0 ft	Northing:	1,428,739.63 ft	Latitude:	40.507117
	+E/-W	0.0 ft	Easting:	3,238,801.64 ft	Longitude:	-104.641205
Position Uncertainty		0.0 ft	Wellhead Elevation:	ft	Ground Level:	4,801.0ft

<b>Wellbore</b>	Wellbore #1				
<b>Magnetics</b>	<b>Model Name</b>	<b>Sample Date</b>	<b>Declination (°)</b>	<b>Dip Angle (°)</b>	<b>Field Strength (nT)</b>
	IGRF2010	9/12/2014	8.37	67.04	52,858

<b>Design</b>	Wellbore #1				
<b>Audit Notes:</b>					
<b>Version:</b>	1.0	<b>Phase:</b>	ACTUAL	<b>Tie On Depth:</b>	0.0
<b>Vertical Section:</b>	<b>Depth From (TVD) (ft)</b>	<b>+N/-S (ft)</b>	<b>+E/-W (ft)</b>	<b>Direction (°)</b>	
	0.0	0.0	0.0	246.66	

<b>Survey Program</b>	<b>Date</b>	9/16/2014			
<b>From (ft)</b>	<b>To (ft)</b>	<b>Survey (Wellbore)</b>	<b>Tool Name</b>	<b>Description</b>	
131.0	11,995.0	Survey #1 (Wellbore #1)	MWD	MWD - Standard	

<b>Survey</b>										
<b>Measured Depth (ft)</b>	<b>Inclination (°)</b>	<b>Azimuth (°)</b>	<b>Vertical Depth (ft)</b>	<b>+N/-S (ft)</b>	<b>+E/-W (ft)</b>	<b>Vertical Section (ft)</b>	<b>Dogleg Rate (°/100ft)</b>	<b>Build Rate (°/100ft)</b>	<b>Turn Rate (°/100ft)</b>	
0.0	0.00	0.00	0.0	0.0	0.0	0.0	0.00	0.00	0.00	
1.0	0.00	0.00	1.0	0.0	0.0	0.0	0.00	0.00	0.00	
<b>SHL 502'FNL &amp; 378'FEL</b>										
131.0	0.00	179.10	131.0	0.0	0.0	0.0	0.00	0.00	0.00	
223.0	1.30	213.00	223.0	-0.9	-0.6	0.9	1.41	1.41	0.00	
315.0	2.20	201.10	314.9	-3.4	-1.8	3.0	1.05	0.98	-12.93	
407.0	3.40	196.30	406.8	-7.7	-3.2	6.0	1.33	1.30	-5.22	
499.0	5.10	191.50	498.6	-14.3	-4.8	10.0	1.89	1.85	-5.22	
592.0	6.40	179.60	591.1	-23.5	-5.5	14.4	1.89	1.40	-12.80	
684.0	8.30	174.70	682.4	-35.3	-4.9	18.5	2.17	2.07	-5.33	
707.0	8.70	175.10	705.1	-38.7	-4.6	19.5	1.76	1.74	1.74	
830.0	11.50	174.70	826.2	-60.1	-2.7	26.3	2.28	2.28	-0.33	
925.0	13.90	172.70	918.9	-80.9	-0.3	32.4	2.57	2.53	-2.11	

<b>Company:</b>	Bayswater Exploration & Production, LLC	<b>Local Co-ordinate Reference:</b>	Well Kaiser H-10HC
<b>Project:</b>	SEC.10-T6N-R65W	<b>TVD Reference:</b>	WELL @ 4823.5ft (RKB - 22.5)
<b>Site:</b>	Kaiser 10-D Pad Sec.10-T6N-R65W	<b>MD Reference:</b>	WELL @ 4823.5ft (RKB - 22.5)
<b>Well:</b>	Kaiser H-10HC	<b>North Reference:</b>	True
<b>Wellbore:</b>	Wellbore #1	<b>Survey Calculation Method:</b>	Minimum Curvature
<b>Design:</b>	Wellbore #1	<b>Database:</b>	Landmark

Survey

Measured Depth (ft)	Inclination (°)	Azimuth (°)	Vertical Depth (ft)	+N/-S (ft)	+E/-W (ft)	Vertical Section (ft)	Dogleg Rate (°/100ft)	Build Rate (°/100ft)	Turn Rate (°/100ft)
1,017.0	15.50	173.80	1,007.8	-104.1	2.4	39.0	1.77	1.74	1.20
1,110.0	17.30	173.80	1,097.1	-130.2	5.2	46.8	1.94	1.94	0.00
1,202.0	17.30	174.70	1,184.9	-157.4	8.0	55.0	0.29	0.00	0.98
1,294.0	17.90	170.80	1,272.6	-185.0	11.5	62.7	1.44	0.65	-4.24
1,386.0	17.70	171.20	1,360.2	-212.7	15.9	69.7	0.25	-0.22	0.43
1,478.0	16.90	165.50	1,448.0	-239.5	21.4	75.3	2.04	-0.87	-6.20
1,570.0	16.40	163.80	1,536.2	-264.9	28.4	78.9	0.76	-0.54	-1.85
1,662.0	16.60	163.10	1,624.4	-290.0	35.8	82.0	0.31	0.22	-0.76
1,755.0	15.80	161.70	1,713.7	-314.7	43.6	84.6	0.96	-0.86	-1.51
1,847.0	15.60	163.10	1,802.3	-338.4	51.2	87.1	0.47	-0.22	1.52
1,939.0	16.30	163.30	1,890.7	-362.6	58.5	90.0	0.76	0.76	0.22
2,031.0	16.60	165.00	1,978.9	-387.7	65.6	93.4	0.62	0.33	1.85
2,124.0	18.00	166.40	2,067.7	-414.5	72.4	97.8	1.57	1.51	1.51
2,216.0	17.20	170.80	2,155.4	-441.7	77.9	103.5	1.69	-0.87	4.78
2,308.0	17.90	172.70	2,243.2	-469.2	81.9	110.7	0.98	0.76	2.07
2,403.0	17.20	170.80	2,333.7	-497.5	86.0	118.2	0.95	-0.74	-2.00
2,499.0	17.40	171.30	2,425.4	-525.7	90.4	125.3	0.26	0.21	0.52
2,594.0	16.00	170.30	2,516.4	-552.7	94.8	132.0	1.50	-1.47	-1.05
2,689.0	16.60	172.40	2,607.6	-579.1	98.8	138.7	0.89	0.63	2.21
2,784.0	16.70	170.80	2,698.6	-606.0	102.8	145.8	0.49	0.11	-1.68
2,880.0	16.90	172.00	2,790.5	-633.4	106.9	152.8	0.42	0.21	1.25
2,975.0	17.70	170.80	2,881.2	-661.3	111.1	160.0	0.92	0.84	-1.26
3,070.0	17.70	168.20	2,971.7	-689.7	116.4	166.4	0.83	0.00	-2.74
3,165.0	17.30	174.50	3,062.3	-717.9	120.7	173.6	2.04	-0.42	6.63
3,261.0	16.50	171.90	3,154.2	-745.6	124.0	181.6	1.15	-0.83	-2.71
3,356.0	17.10	169.90	3,245.1	-772.7	128.3	188.3	0.88	0.63	-2.11
3,451.0	16.30	169.60	3,336.1	-799.6	133.2	194.5	0.85	-0.84	-0.32
3,546.0	15.60	169.90	3,427.4	-825.3	137.9	200.4	0.74	-0.74	0.32
3,642.0	15.50	170.50	3,519.9	-850.7	142.2	206.5	0.20	-0.10	0.63
3,737.0	14.40	168.20	3,611.7	-874.7	146.7	211.9	1.32	-1.16	-2.42
3,832.0	14.20	169.60	3,703.8	-897.8	151.3	216.8	0.42	-0.21	1.47
3,927.0	14.90	168.00	3,795.7	-921.2	155.9	221.9	0.85	0.74	-1.68
4,023.0	16.50	173.10	3,888.1	-946.8	160.1	228.1	2.20	1.67	5.31
4,118.0	18.40	172.40	3,978.8	-975.0	163.7	236.0	2.01	2.00	-0.74
4,213.0	19.70	173.30	4,068.6	-1,005.8	167.6	244.7	1.40	1.37	0.95
4,308.0	20.00	172.20	4,157.9	-1,037.8	171.6	253.6	0.50	0.32	-1.16
4,404.0	19.40	171.70	4,248.3	-1,069.8	176.2	262.2	0.65	-0.63	-0.52
4,499.0	16.50	171.50	4,338.7	-1,098.8	180.4	269.7	3.05	-3.05	-0.21
4,594.0	15.70	167.10	4,429.9	-1,124.7	185.3	275.5	1.54	-0.84	-4.63
4,690.0	15.70	168.40	4,522.4	-1,150.1	190.8	280.5	0.37	0.00	1.35
4,785.0	16.80	169.40	4,613.6	-1,176.2	195.9	286.1	1.19	1.16	1.05
4,880.0	17.20	160.40	4,704.4	-1,202.9	203.2	290.1	2.80	0.42	-9.47
4,975.0	15.90	161.70	4,795.5	-1,228.5	212.0	292.2	1.42	-1.37	1.37
5,071.0	16.40	164.00	4,887.7	-1,254.0	219.8	295.0	0.85	0.52	2.40
5,166.0	17.10	168.50	4,978.7	-1,280.6	226.3	299.6	1.55	0.74	4.74
5,261.0	16.80	171.90	5,069.5	-1,307.8	231.0	306.1	1.09	-0.32	3.58
5,356.0	18.20	173.10	5,160.1	-1,336.2	234.7	313.9	1.52	1.47	1.26
5,452.0	15.70	170.50	5,252.0	-1,363.9	238.7	321.3	2.72	-2.60	-2.71
5,547.0	15.50	169.90	5,343.5	-1,389.0	243.0	327.2	0.27	-0.21	-0.63
5,642.0	15.50	169.20	5,435.0	-1,414.0	247.6	332.9	0.20	0.00	-0.74
5,737.0	15.60	173.40	5,526.5	-1,439.2	251.5	339.3	1.19	0.11	4.42
5,833.0	16.40	172.90	5,618.8	-1,465.4	254.6	346.9	0.85	0.83	-0.52
5,928.0	17.90	174.20	5,709.6	-1,493.3	257.8	355.0	1.63	1.58	1.37
6,023.0	16.20	168.40	5,800.4	-1,520.8	261.9	362.1	2.53	-1.79	-6.11

<b>Company:</b>	Bayswater Exploration & Production, LLC	<b>Local Co-ordinate Reference:</b>	Well Kaiser H-10HC
<b>Project:</b>	SEC.10-T6N-R65W	<b>TVD Reference:</b>	WELL @ 4823.5ft (RKB - 22.5)
<b>Site:</b>	Kaiser 10-D Pad Sec.10-T6N-R65W	<b>MD Reference:</b>	WELL @ 4823.5ft (RKB - 22.5)
<b>Well:</b>	Kaiser H-10HC	<b>North Reference:</b>	True
<b>Wellbore:</b>	Wellbore #1	<b>Survey Calculation Method:</b>	Minimum Curvature
<b>Design:</b>	Wellbore #1	<b>Database:</b>	Landmark

## Survey

Measured Depth (ft)	Inclination (°)	Azimuth (°)	Vertical Depth (ft)	+N/-S (ft)	+E/-W (ft)	Vertical Section (ft)	Dogleg Rate (°/100ft)	Build Rate (°/100ft)	Turn Rate (°/100ft)
6,118.0	16.40	170.50	5,891.6	-1,547.0	266.8	368.0	0.66	0.21	2.21
6,214.0	17.40	168.20	5,983.5	-1,574.4	272.0	374.1	1.25	1.04	-2.40
6,309.0	19.20	170.80	6,073.7	-1,603.7	277.4	380.8	2.08	1.89	2.74
6,404.0	15.70	174.00	6,164.3	-1,631.9	281.2	388.4	3.82	-3.68	3.37
6,499.0	15.50	175.70	6,255.8	-1,657.4	283.5	396.4	0.53	-0.21	1.79
6,595.0	13.50	164.70	6,348.7	-1,681.0	287.4	402.2	3.54	-2.08	-11.46
6,690.0	16.70	170.80	6,440.4	-1,705.2	292.5	407.1	3.76	3.37	6.42
6,785.0	17.40	178.70	6,531.3	-1,732.9	295.0	415.7	2.54	0.74	8.32
6,880.0	18.70	179.80	6,621.6	-1,762.3	295.4	427.0	1.41	1.37	1.16
6,927.0	18.20	180.70	6,666.2	-1,777.2	295.4	433.0	1.22	-1.06	1.91
6,975.0	19.30	191.70	6,711.6	-1,792.4	293.7	440.6	7.70	2.29	22.92
7,022.0	19.30	207.90	6,756.0	-1,806.9	288.4	451.1	11.36	0.00	34.47
7,070.0	19.60	225.30	6,801.3	-1,819.6	279.0	464.8	12.05	0.63	36.25
7,117.0	22.20	234.40	6,845.3	-1,830.3	266.2	480.9	8.83	5.53	19.36
7,166.0	26.30	238.30	6,889.9	-1,841.4	249.4	500.6	8.98	8.37	7.96
7,213.0	30.80	240.40	6,931.2	-1,852.8	230.1	522.9	9.81	9.57	4.47
7,261.0	34.40	242.20	6,971.6	-1,865.2	207.4	548.7	7.77	7.50	3.75
7,308.0	39.40	245.00	7,009.2	-1,877.7	182.1	576.8	11.22	10.64	5.96
7,356.0	44.40	247.80	7,044.9	-1,890.5	152.7	608.9	11.12	10.42	5.83
7,403.0	49.70	252.00	7,076.9	-1,902.3	120.4	643.2	13.03	11.28	8.94
7,451.0	53.70	256.10	7,106.7	-1,912.6	84.2	680.5	10.69	8.33	8.54
7,498.0	59.80	258.00	7,132.5	-1,921.4	45.9	719.2	13.41	12.98	4.04
7,546.0	68.00	259.90	7,153.6	-1,929.6	3.7	761.2	17.45	17.08	3.96
7,593.0	77.30	261.70	7,167.6	-1,936.8	-40.6	804.7	20.12	19.79	3.83
7,624.0	82.30	263.60	7,173.0	-1,940.7	-70.8	834.0	17.22	16.13	6.13
7,712.0	86.26	269.99	7,181.8	-1,945.5	-158.2	916.1	8.51	4.50	7.26
7,853.0	88.72	268.64	7,188.0	-1,947.2	-299.0	1,046.1	1.99	1.74	-0.96
7,948.0	89.78	268.74	7,189.2	-1,949.4	-394.0	1,134.2	1.12	1.12	0.11
8,042.0	91.45	270.11	7,188.2	-1,950.3	-488.0	1,220.8	2.30	1.78	1.46
8,137.0	91.71	270.73	7,185.6	-1,949.6	-582.9	1,307.7	0.71	0.27	0.65
8,161.6	91.30	271.19	7,185.0	-1,949.2	-607.6	1,330.2	2.51	-1.68	1.86
<b>WP1</b>									
8,231.0	90.13	272.48	7,184.1	-1,947.0	-676.9	1,393.0	2.51	-1.68	1.86
8,325.0	88.99	273.81	7,184.8	-1,941.8	-770.7	1,477.1	1.86	-1.21	1.41
8,420.0	87.85	272.81	7,187.4	-1,936.4	-865.5	1,562.0	1.60	-1.20	-1.05
8,481.0	88.30	271.11	7,189.5	-1,934.3	-926.4	1,617.0	2.88	0.74	-2.79
<b>WP2</b>									
8,514.0	88.55	270.19	7,190.4	-1,933.9	-959.5	1,647.2	2.88	0.75	-2.79
8,608.0	89.08	269.71	7,192.3	-1,934.0	-1,053.4	1,733.5	0.76	0.56	-0.51
8,703.0	89.08	268.58	7,193.9	-1,935.4	-1,148.4	1,821.3	1.19	0.00	-1.19
8,797.0	90.40	269.04	7,194.3	-1,937.4	-1,242.4	1,908.3	1.49	1.40	0.49
8,891.0	90.57	268.16	7,193.5	-1,939.6	-1,336.4	1,995.5	0.95	0.18	-0.94
8,985.0	91.63	267.79	7,191.7	-1,943.0	-1,430.3	2,083.1	1.19	1.13	-0.39
9,080.0	90.75	268.99	7,189.7	-1,945.6	-1,525.2	2,171.3	1.57	-0.93	1.26
9,174.0	91.71	269.63	7,187.7	-1,946.8	-1,619.2	2,258.0	1.23	1.02	0.68
9,179.4	91.78	269.74	7,187.5	-1,946.8	-1,624.6	2,263.0	2.40	1.31	2.02
<b>WP3</b>									
9,269.0	92.95	271.55	7,183.8	-1,945.8	-1,714.1	2,344.8	2.40	1.31	2.02
9,363.0	91.89	271.38	7,179.9	-1,943.4	-1,808.0	2,430.0	1.14	-1.13	-0.18
9,458.0	91.98	273.02	7,176.7	-1,939.7	-1,902.8	2,515.7	1.73	0.09	1.73
9,498.6	90.99	272.80	7,175.6	-1,937.7	-1,943.4	2,552.1	2.49	-2.44	-0.53
<b>WP4</b>									
9,552.0	89.69	272.52	7,175.3	-1,935.2	-1,996.7	2,600.1	2.49	-2.44	-0.53
9,647.0	89.69	273.63	7,175.8	-1,930.1	-2,091.6	2,685.2	1.17	0.00	1.17

<b>Company:</b>	Bayswater Exploration & Production, LLC	<b>Local Co-ordinate Reference:</b>	Well Kaiser H-10HC
<b>Project:</b>	SEC.10-T6N-R65W	<b>TVD Reference:</b>	WELL @ 4823.5ft (RKB - 22.5)
<b>Site:</b>	Kaiser 10-D Pad Sec.10-T6N-R65W	<b>MD Reference:</b>	WELL @ 4823.5ft (RKB - 22.5)
<b>Well:</b>	Kaiser H-10HC	<b>North Reference:</b>	True
<b>Wellbore:</b>	Wellbore #1	<b>Survey Calculation Method:</b>	Minimum Curvature
<b>Design:</b>	Wellbore #1	<b>Database:</b>	Landmark

## Survey

Measured Depth (ft)	Inclination (°)	Azimuth (°)	Vertical Depth (ft)	+N/-S (ft)	+E/-W (ft)	Vertical Section (ft)	Dogleg Rate (°/100ft)	Build Rate (°/100ft)	Turn Rate (°/100ft)
9,741.0	88.64	271.76	7,177.2	-1,925.7	-2,185.5	2,769.6	2.28	-1.12	-1.99
9,836.0	89.16	270.45	7,179.0	-1,923.9	-2,280.4	2,856.1	1.48	0.55	-1.38
9,930.0	89.87	270.24	7,179.8	-1,923.3	-2,374.4	2,942.2	0.79	0.76	-0.22
9,937.1	89.92	270.18	7,179.8	-1,923.3	-2,381.5	2,948.7	1.09	0.74	-0.80
<b>WP5</b>									
10,025.0	90.57	269.48	7,179.4	-1,923.5	-2,469.4	3,029.5	1.09	0.74	-0.80
10,119.0	91.54	269.36	7,177.7	-1,924.5	-2,563.4	3,116.1	1.04	1.03	-0.13
10,214.0	90.48	269.32	7,176.0	-1,925.6	-2,658.4	3,203.8	1.12	-1.12	-0.04
10,308.0	90.66	268.37	7,175.1	-1,927.5	-2,752.3	3,290.8	1.03	0.19	-1.01
10,402.0	91.10	267.29	7,173.6	-1,931.0	-2,846.3	3,378.4	1.24	0.47	-1.15
10,497.0	90.40	267.96	7,172.4	-1,935.0	-2,941.2	3,467.1	1.02	-0.74	0.71
10,591.0	91.10	268.04	7,171.2	-1,938.2	-3,035.1	3,554.7	0.75	0.74	0.09
10,595.3	91.09	267.98	7,171.1	-1,938.4	-3,039.4	3,558.7	1.34	-0.27	-1.32
<b>WP6</b>									
10,686.0	90.84	266.79	7,169.6	-1,942.5	-3,130.0	3,643.5	1.34	-0.27	-1.32
10,780.0	90.22	269.08	7,168.7	-1,945.9	-3,223.9	3,731.1	2.52	-0.66	2.44
10,875.0	89.43	268.95	7,169.0	-1,947.5	-3,318.9	3,818.9	0.84	-0.83	-0.14
10,969.0	90.48	270.15	7,169.1	-1,948.3	-3,412.9	3,905.5	1.70	1.12	1.28
10,993.8	90.69	270.53	7,168.8	-1,948.1	-3,437.7	3,928.3	1.76	0.85	1.54
<b>WP7</b>									
11,063.0	91.28	271.60	7,167.6	-1,946.8	-3,506.9	3,991.2	1.76	0.85	1.54
11,158.0	90.22	271.81	7,166.4	-1,944.0	-3,601.8	4,077.3	1.14	-1.12	0.22
11,252.0	88.11	272.48	7,167.7	-1,940.5	-3,695.7	4,162.1	2.36	-2.24	0.71
11,346.0	88.81	272.88	7,170.3	-1,936.1	-3,789.6	4,246.6	0.86	0.74	0.43
11,432.9	89.53	272.83	7,171.5	-1,931.8	-3,876.4	4,324.5	0.83	0.83	-0.06
<b>WP8</b>									
11,441.0	89.60	272.82	7,171.6	-1,931.4	-3,884.5	4,331.8	0.83	0.83	-0.06
11,535.0	89.96	271.86	7,171.9	-1,927.5	-3,978.4	4,416.5	1.09	0.38	-1.02
11,630.0	90.40	270.75	7,171.6	-1,925.4	-4,073.4	4,502.9	1.26	0.46	-1.17
11,724.0	90.40	270.30	7,171.0	-1,924.5	-4,167.4	4,588.8	0.48	0.00	-0.48
11,819.0	90.22	270.47	7,170.5	-1,923.9	-4,262.4	4,675.8	0.26	-0.19	0.18
11,913.0	91.01	270.15	7,169.5	-1,923.4	-4,356.4	4,761.9	0.91	0.84	-0.34
11,995.0	91.01	270.15	7,168.0	-1,923.2	-4,438.3	4,837.1	0.00	0.00	0.00
<b>BHL 2450'FNL &amp; 465'FWL</b>									

Checked By: \_\_\_\_\_ Approved By: \_\_\_\_\_ Date: \_\_\_\_\_