

N
True
W E
BGM (1945.0 to 2016.0) Dip 66.93° Field 52655.9 nT
Magnetic North is 8.45 degrees East of True North (at 12/16/2014)
To correct azimuth from Magnetic to True add 8.45 degrees

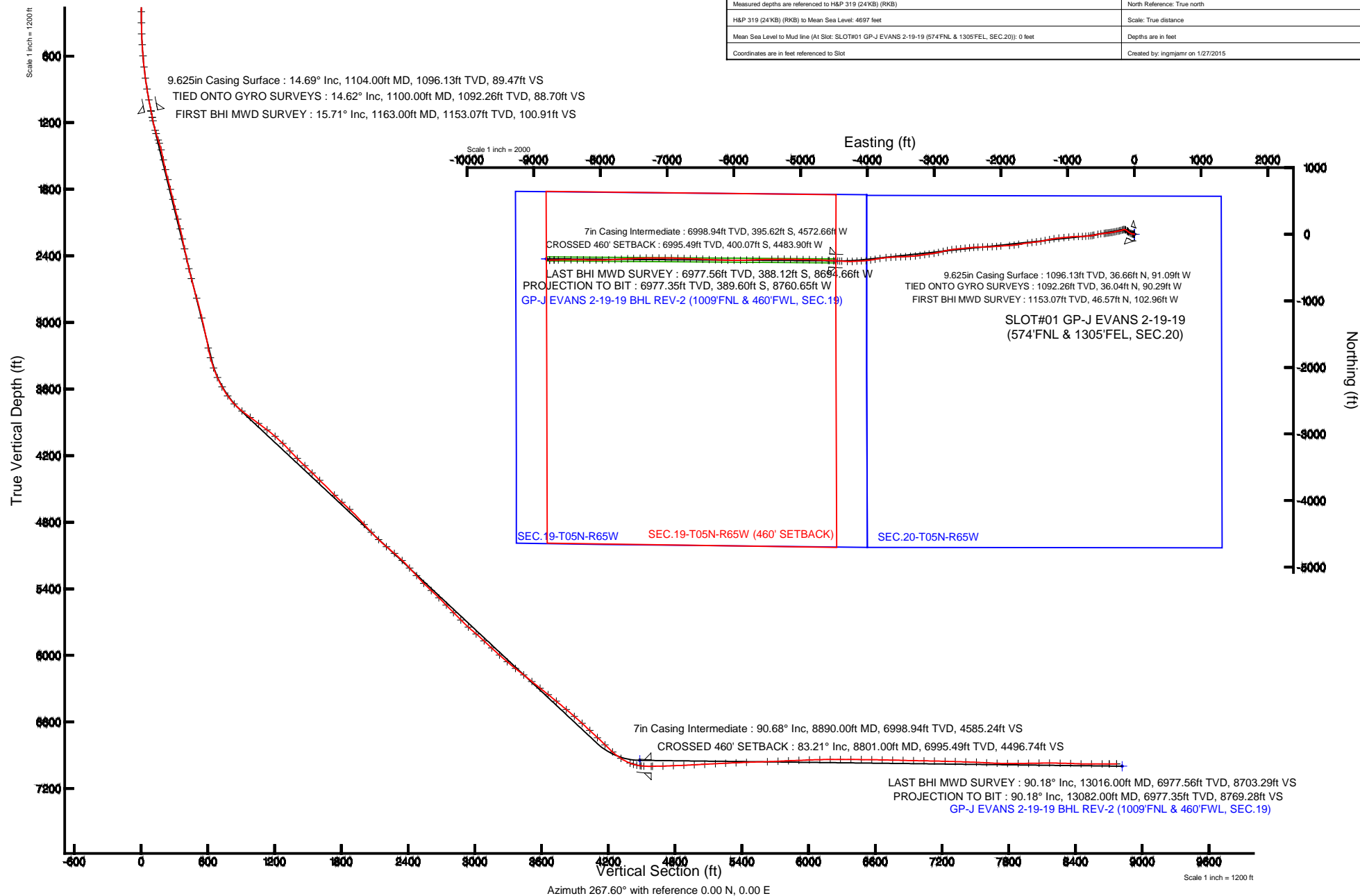


EXTRACTION OIL & GAS

Location: COLORADO Slot: SLOT#01 GP-J EVANS 2-19-19 (574°FNL & 1305°FEL, SEC.20)
Field: WELD COUNTY (NAD83/TRUE NORTH) Well: GP-J EVANS 2-19-19
Facility: SEC.20-T05N-R65W Wellbore: GP-J EVANS 2-19-19 PWB

Plot reference wellpath is GP-J EVANS 2-19-19 PWP (REV-B.0)

True vertical depths are referenced to H&P 319 (24KB) (RKB)	Grid System: NAD83 / Lambert Colorado SP, Northern Zone (501), US feet
Measured depths are referenced to H&P 319 (24KB) (RKB)	North Reference: True north
H&P 319 (24KB) (RKB) to Mean Sea Level: 4697 feet	Scale: True distance
Mean Sea Level to Mud line (At Slot: SLOT#01 GP-J EVANS 2-19-19 (574°FNL & 1305°FEL, SEC.20)): 0 feet	Depths are in feet
Coordinates are in feet referenced to Slot	Created by: ingmjmr on 1/27/2015





Actual Wellpath Report

GP-J EVANS 2-19-19 AWP

Page 1 of 8



REFERENCE WELLPATH IDENTIFICATION

Operator	EXTRACTION OIL & GAS	Slot	SLOT#01 GP-J EVANS 2-19-19 (574'FNL & 1305'FEL, SEC.20)
Area	COLORADO	Well	GP-J EVANS 2-19-19
Field	WELD COUNTY (NAD83/TRUE NORTH)	Wellbore	GP-J EVANS 2-19-19 AWB
Facility	SEC.20-T05N-R65W		

REPORT SETUP INFORMATION

Projection System	NAD83 / Lambert Colorado SP, Northern Zone (501), US feet	Software System	WellArchitect® 4.0.0
North Reference	True	User	Ingmjmr
Scale	0.99996	Report Generated	1/27/2015 at 1:33:40 PM
Convergence at slot	n/a	Database/Source file	Denver/GP-J_EVANS_2-19-19_AWB.xml

WELLPATH LOCATION

	Local coordinates		Grid coordinates		Geographic coordinates	
	North[ft]	East[ft]	Easting[US ft]	Northing[US ft]	Latitude	Longitude
Slot Location	0.00	0.00	3227708.85	1386069.06	40°23'25.008"N	104°40'57.036"W
Facility Reference Pt			3227708.85	1386069.06	40°23'25.008"N	104°40'57.036"W
Field Reference Pt			3185481.27	1419166.81	40°28'55.560"N	104°49'59.556"W

WELLPATH DATUM

Calculation method	Minimum curvature	H&P 319 (24'KB) (RKB) to Facility Vertical Datum	4697.00ft
Horizontal Reference Pt	Slot	H&P 319 (24'KB) (RKB) to Mean Sea Level	4697.00ft
Vertical Reference Pt	H&P 319 (24'KB) (RKB)	H&P 319 (24'KB) (RKB) to Mud Line at Slot (SLOT#01 GP-J EVANS 2-19-19 (574'FNL & 1305'FEL, SEC.20))	4697.00ft
MD Reference Pt	H&P 319 (24'KB) (RKB)	Section Origin	N 0.00, E 0.00 ft
Field Vertical Reference	Mean Sea Level	Section Azimuth	267.60°



Actual Wellpath Report

GP-J EVANS 2-19-19 AWP

Page 2 of 8



REFERENCE WELLPATH IDENTIFICATION			
Operator	EXTRACTION OIL & GAS	Slot	SLOT#01 GP-J EVANS 2-19-19 (574'FNL & 1305'FEL, SEC.20)
Area	COLORADO	Well	GP-J EVANS 2-19-19
Field	WELD COUNTY (NAD83/TRUE NORTH)	Wellbore	GP-J EVANS 2-19-19 AWB
Facility	SEC.20-T05N-R65W		

WELLPATH DATA (129 stations)								
MD [ft]	Inclination [°]	Azimuth [°]	TVD [ft]	Vert Sect [ft]	North [ft]	East [ft]	DLS [°/100ft]	Comments
1100.00	14.620	307.450	1092.26	88.70	36.04	-90.29	2.52	TIED ONTO GYRO SURVEYS
1163.00	15.710	311.810	1153.07	100.91	46.57	-102.96	2.50	FIRST BHI MWD SURVEY
1194.00	16.080	312.580	1182.88	106.96	52.27	-109.25	1.37	
1284.00	15.490	289.880	1269.57	126.91	64.80	-129.75	6.85	
1315.00	17.710	282.860	1299.28	135.29	67.26	-138.24	9.64	
1376.00	18.720	266.950	1357.26	154.05	68.80	-157.07	8.29	
1406.00	18.700	255.890	1385.68	163.57	67.38	-166.55	11.81	
1468.00	13.750	244.960	1445.21	180.12	61.83	-182.87	9.35	
1560.00	12.030	258.200	1534.91	199.67	55.24	-202.17	3.70	
1651.00	13.150	258.880	1623.72	219.26	51.30	-221.61	1.24	
1743.00	14.700	258.380	1713.01	241.13	46.93	-243.31	1.69	
1835.00	14.390	257.440	1802.06	263.91	42.10	-265.91	0.42	
1927.00	13.830	254.360	1891.29	285.86	36.65	-287.65	1.02	
2019.00	13.840	258.720	1980.62	307.44	31.53	-309.04	1.13	
2110.00	14.530	263.330	2068.85	329.58	28.07	-331.05	1.45	
2202.00	13.700	262.220	2158.07	351.93	25.26	-353.31	0.95	
2294.00	11.740	259.690	2247.81	372.05	22.11	-373.31	2.21	
2386.00	12.150	266.260	2337.82	391.00	19.80	-392.18	1.54	
2478.00	12.180	259.770	2427.76	410.30	17.45	-411.39	1.49	
2569.00	13.110	262.110	2516.55	430.08	14.32	-431.06	1.17	
2661.00	14.620	262.530	2605.87	452.04	11.38	-452.91	1.64	
2844.00	15.850	262.660	2782.43	499.94	5.19	-500.60	0.67	
3028.00	13.510	259.290	2960.42	546.25	-2.02	-546.65	1.35	
3303.00	11.120	256.380	3229.07	604.06	-14.24	-603.99	0.90	
3395.00	14.260	256.490	3318.81	623.88	-18.97	-623.64	3.41	
3490.00	19.570	264.120	3409.68	651.27	-23.34	-650.86	6.05	
3584.00	24.050	266.080	3496.93	686.15	-26.26	-685.65	4.83	
3678.00	29.040	263.980	3581.00	728.09	-29.97	-727.47	5.40	
3773.00	34.860	267.170	3661.58	778.30	-33.73	-777.57	6.38	
3867.00	43.370	270.590	3734.45	837.51	-34.73	-836.79	9.34	



Actual Wellpath Report

GP-J EVANS 2-19-19 AWP

Page 3 of 8



REFERENCE WELLPATH IDENTIFICATION			
Operator	EXTRACTION OIL & GAS	Slot	SLOT#01 GP-J EVANS 2-19-19 (574'FNL & 1305'FEL, SEC.20)
Area	COLORADO	Well	GP-J EVANS 2-19-19
Field	WELD COUNTY (NAD83/TRUE NORTH)	Wellbore	GP-J EVANS 2-19-19 AWB
Facility	SEC.20-T05N-R65W		

WELLPATH DATA (129 stations)								
MD [ft]	Inclination [°]	Azimuth [°]	TVD [ft]	Vert Sect [ft]	North [ft]	East [ft]	DLS [°/100ft]	Comments
3961.00	51.530	265.660	3797.99	906.66	-37.18	-905.89	9.50	
4055.00	53.270	264.910	3855.34	981.07	-43.31	-980.11	1.96	
4149.00	54.280	263.880	3910.89	1056.78	-50.72	-1055.58	1.39	
4244.00	52.590	264.090	3967.48	1132.92	-58.72	-1131.46	1.79	
4338.00	48.720	260.460	4027.08	1205.28	-68.42	-1203.46	5.08	
4432.00	46.100	259.200	4090.69	1273.84	-80.62	-1271.58	2.96	
4526.00	43.350	257.980	4157.47	1339.17	-93.69	-1336.41	3.06	
4620.00	44.660	259.760	4225.08	1403.71	-106.28	-1400.48	1.92	
4715.00	46.710	263.450	4291.46	1471.29	-116.17	-1467.71	3.52	
4809.00	45.600	262.760	4356.57	1538.87	-124.30	-1535.01	1.29	
4903.00	45.610	262.260	4422.33	1605.77	-133.06	-1601.60	0.38	
5092.00	44.510	260.640	4555.84	1738.78	-152.93	-1733.89	0.84	
5186.00	47.810	262.100	4620.94	1806.17	-163.07	-1800.91	3.68	
5280.00	46.550	267.010	4684.85	1874.98	-169.64	-1869.51	4.06	
5469.00	41.360	265.420	4820.87	2006.07	-178.21	-2000.36	2.81	
5563.00	43.590	265.030	4890.20	2069.49	-183.50	-2063.61	2.39	
5657.00	45.790	266.710	4957.02	2135.56	-188.24	-2129.53	2.66	
5752.00	50.080	268.730	5020.66	2206.06	-191.01	-2199.98	4.78	
5846.00	49.490	268.510	5081.35	2277.83	-192.73	-2271.74	0.65	
5940.00	46.060	268.000	5144.51	2347.42	-194.85	-2341.31	3.67	
6035.00	42.380	266.660	5212.58	2413.66	-197.91	-2407.48	4.00	
6128.00	41.850	263.210	5281.58	2475.94	-203.40	-2469.58	2.55	
6223.00	44.540	263.650	5350.83	2540.79	-210.83	-2534.18	2.85	
6317.00	47.900	265.210	5415.86	2608.54	-217.39	-2601.71	3.77	
6411.00	45.280	263.490	5480.46	2676.71	-224.09	-2669.66	3.09	
6506.00	44.760	261.590	5547.61	2743.64	-232.81	-2736.28	1.52	
6600.00	44.410	259.870	5614.56	2809.15	-243.44	-2801.40	1.34	
6694.00	46.080	255.900	5680.76	2874.91	-257.47	-2866.63	3.49	
6788.00	48.080	257.840	5744.77	2942.54	-273.09	-2933.66	2.61	
6882.00	49.730	259.870	5806.56	3012.55	-286.77	-3003.16	2.39	



Actual Wellpath Report

GP-J EVANS 2-19-19 AWP

Page 4 of 8



REFERENCE WELLPATH IDENTIFICATION

Operator	EXTRACTION OIL & GAS	Slot	SLOT#01 GP-J EVANS 2-19-19 (574'FNL & 1305'FEL, SEC.20)
Area	COLORADO	Well	GP-J EVANS 2-19-19
Field	WELD COUNTY (NAD83/TRUE NORTH)	Wellbore	GP-J EVANS 2-19-19 AWB
Facility	SEC.20-T05N-R65W		

WELLPATH DATA (129 stations) † = interpolated/extrapolated station

MD [ft]	Inclination [°]	Azimuth [°]	TVD [ft]	Vert Sect [ft]	North [ft]	East [ft]	DLS [°/100ft]	Comments
6977.00	46.960	263.740	5869.71	3083.13	-296.93	-3073.38	4.21	
7071.00	47.440	261.080	5933.58	3151.81	-306.04	-3141.73	2.14	
7165.00	48.740	260.770	5996.37	3221.28	-317.08	-3210.81	1.40	
7259.00	49.490	263.550	6057.90	3292.02	-326.76	-3281.20	2.37	
7354.00	52.140	267.450	6117.93	3365.57	-332.49	-3354.58	4.23	
7448.00	51.430	265.650	6176.08	3439.41	-336.93	-3428.29	1.68	
7542.00	50.910	268.630	6235.03	3512.62	-340.59	-3501.41	2.53	
7637.00	51.070	267.950	6294.83	3586.43	-342.79	-3575.20	0.58	
7731.00	51.830	266.360	6353.41	3659.94	-346.45	-3648.62	1.55	
7825.00	50.590	263.940	6412.30	3733.13	-352.63	-3721.61	2.40	
7943.00	49.980	260.720	6487.71	3823.50	-364.73	-3811.55	2.16	
8038.00	48.760	259.860	6549.57	3895.01	-376.88	-3882.61	1.46	
8132.00	47.650	261.240	6612.22	3964.55	-388.39	-3951.74	1.61	
8226.00	47.410	265.290	6675.71	4033.67	-396.53	-4020.57	3.19	
8321.00	46.470	266.350	6740.57	4103.04	-401.59	-4089.79	1.28	
8415.00	45.810	267.300	6805.70	4170.81	-405.35	-4157.46	1.01	
8509.00	47.550	266.750	6870.19	4239.19	-408.90	-4225.75	1.90	
8603.00	56.850	272.480	6927.77	4313.27	-409.17	-4299.89	11.00	
8697.00	69.090	273.020	6970.41	4396.51	-405.13	-4383.37	13.03	
8728.00	73.110	272.970	6980.45	4425.70	-403.60	-4412.65	12.97	
8760.00	77.480	272.910	6988.57	4456.51	-402.02	-4443.56	13.66	
8791.00	81.680	272.710	6994.18	4486.87	-400.52	-4474.00	13.56	
8801.00†	83.212	272.461	6995.49	4496.74	-400.07	-4483.90	15.52	CROSSED 460' SETBACK
8825.00	86.890	271.870	6997.56	4520.57	-399.17	-4507.79	15.52	
8903.00	91.440	274.910	6998.70	4598.14	-394.56	-4585.62	7.01	
8997.00	90.950	271.960	6996.74	4691.62	-388.93	-4679.42	3.18	
9091.00	92.470	272.130	6993.93	4785.29	-385.58	-4773.31	1.63	
9186.00	92.710	271.610	6989.64	4879.93	-382.48	-4868.17	0.60	
9280.00	92.950	270.910	6985.00	4973.62	-380.42	-4962.03	0.79	
9374.00	92.700	270.900	6980.36	5067.35	-378.93	-5055.90	0.27	



Actual Wellpath Report

GP-J EVANS 2-19-19 AWP

Page 5 of 8



REFERENCE WELLPATH IDENTIFICATION

Operator	EXTRACTION OIL & GAS	Slot	SLOT#01 GP-J EVANS 2-19-19 (574'FNL & 1305'FEL, SEC.20)
Area	COLORADO	Well	GP-J EVANS 2-19-19
Field	WELD COUNTY (NAD83/TRUE NORTH)	Wellbore	GP-J EVANS 2-19-19 AWB
Facility	SEC.20-T05N-R65W		

WELLPATH DATA (129 stations)

MD [ft]	Inclination [°]	Azimuth [°]	TVD [ft]	Vert Sect [ft]	North [ft]	East [ft]	DLS [°/100ft]	Comments
9469.00	92.710	270.830	6975.88	5162.09	-377.50	-5150.79	0.07	
9562.00	93.020	270.740	6971.23	5254.83	-376.23	-5243.66	0.35	
9657.00	92.120	269.670	6966.97	5349.63	-375.89	-5338.56	1.47	
9750.00	92.150	269.180	6963.51	5442.52	-376.82	-5431.49	0.53	
9938.00	91.780	268.000	6957.06	5630.38	-381.44	-5619.32	0.66	
10033.00	92.300	267.790	6953.68	5725.32	-384.93	-5714.20	0.59	
10127.00	92.980	267.670	6949.35	5819.21	-388.65	-5808.02	0.73	
10221.00	91.840	269.640	6945.40	5913.11	-390.86	-5901.91	2.42	
10315.00	92.150	269.770	6942.12	6006.99	-391.34	-5995.85	0.36	
10409.00	91.560	271.160	6939.08	6100.82	-390.58	-6089.79	1.61	
10503.00	90.400	271.780	6937.47	6194.59	-388.16	-6183.75	1.40	
10597.00	89.880	272.400	6937.24	6288.30	-384.74	-6277.68	0.86	
10691.00	89.410	272.800	6937.83	6381.94	-380.47	-6371.58	0.66	
10785.00	89.480	272.730	6938.74	6475.55	-375.94	-6465.47	0.11	
10878.00	89.290	272.270	6939.74	6568.20	-371.88	-6558.38	0.54	
10973.00	88.950	272.210	6941.19	6662.88	-368.17	-6653.29	0.36	
11067.00	88.800	272.330	6943.04	6756.55	-364.45	-6747.20	0.20	
11161.00	88.210	272.130	6945.49	6850.21	-360.79	-6841.10	0.66	
11255.00	89.020	270.740	6947.76	6943.97	-358.44	-6935.04	1.71	
11349.00	88.800	270.290	6949.55	7037.83	-357.59	-7029.02	0.53	
11444.00	88.770	270.060	6951.57	7132.71	-357.30	-7123.99	0.24	
11539.00	88.280	269.760	6954.01	7227.60	-357.45	-7218.96	0.60	
11632.00	88.460	268.610	6956.66	7320.53	-358.77	-7311.91	1.25	
11726.00	88.250	268.200	6959.36	7414.48	-361.39	-7405.84	0.49	
11821.00	87.660	267.700	6962.75	7509.42	-364.79	-7500.72	0.81	
11913.00	86.730	267.280	6967.25	7601.30	-368.81	-7592.52	1.11	
12007.00	87.660	266.550	6971.85	7695.18	-373.86	-7686.27	1.26	
12102.00	90.150	266.710	6973.66	7790.15	-379.45	-7781.08	2.63	
12196.00	90.370	267.230	6973.24	7884.14	-384.41	-7874.94	0.60	
12291.00	90.710	269.320	6972.34	7979.12	-387.27	-7969.89	2.23	



Actual Wellpath Report

GP-J EVANS 2-19-19 AWP

Page 6 of 8



REFERENCE WELLPATH IDENTIFICATION

Operator	EXTRACTION OIL & GAS	Slot	SLOT#01 GP-J EVANS 2-19-19 (574'FNL & 1305'FEL, SEC.20)
Area	COLORADO	Well	GP-J EVANS 2-19-19
Field	WELD COUNTY (NAD83/TRUE NORTH)	Wellbore	GP-J EVANS 2-19-19 AWB
Facility	SEC.20-T05N-R65W		

WELLPATH DATA (129 stations)

MD [ft]	Inclination [°]	Azimuth [°]	TVD [ft]	Vert Sect [ft]	North [ft]	East [ft]	DLS [°/100ft]	Comments
12385.00	91.380	270.180	6970.63	8073.04	-387.68	-8063.87	1.16	
12479.00	89.820	270.940	6969.64	8166.90	-386.76	-8157.86	1.85	
12574.00	88.430	270.950	6971.09	8261.73	-385.20	-8252.83	1.46	
12669.00	88.180	270.530	6973.90	8356.54	-383.97	-8347.78	0.51	
12763.00	87.960	269.840	6977.07	8450.39	-383.67	-8441.73	0.77	
12857.00	90.330	269.090	6978.47	8544.33	-384.55	-8535.71	2.64	
12952.00	90.390	268.490	6977.88	8639.30	-386.55	-8630.68	0.63	
13016.00	90.180	268.710	6977.56	8703.29	-388.12	-8694.66	0.48	LAST BHI MWD SURVEY
13082.00	90.180	268.710	6977.35	8769.28	-389.60	-8760.65	0.00	PROJECTION TO BIT

HOLE & CASING SECTIONS - Ref Wellbore: GP-J EVANS 2-19-19 AWB Ref Wellpath: GP-J EVANS 2-19-19 AWP

String/Diameter	Start MD [ft]	End MD [ft]	Interval [ft]	Start TVD [ft]	End TVD [ft]	Start N/S [ft]	Start E/W [ft]	End N/S [ft]	End E/W [ft]
9.625in Casing Surface	24.00	1104.00	1080.00	24.00	1096.13	0.00	0.00	36.66	-91.09
8.75in Open Hole	1104.00	8890.00	7786.00	1096.13	6998.94	36.66	-91.09	-395.62	-4572.66
7in Casing Intermediate	24.00	8890.00	8866.00	24.00	6998.94	0.00	0.00	-395.62	-4572.66
6.125in Open Hole	8890.00	13082.00	4192.00	6998.94	6977.35	-395.62	-4572.66	-389.60	-8760.65



Actual Wellpath Report

GP-J EVANS 2-19-19 AWP

Page 7 of 8



REFERENCE WELLPATH IDENTIFICATION

Operator	EXTRACTION OIL & GAS	Slot	SLOT#01 GP-J EVANS 2-19-19 (574'FNL & 1305'FEL, SEC.20)
Area	COLORADO	Well	GP-J EVANS 2-19-19
Field	WELD COUNTY (NAD83/TRUE NORTH)	Wellbore	GP-J EVANS 2-19-19 AWB
Facility	SEC.20-T05N-R65W		

TARGETS

Name	MD [ft]	TVD [ft]	North [ft]	East [ft]	Grid East [US ft]	Grid North [US ft]	Latitude	Longitude	Shape
SEC.19-T05N-R65W		0.00	0.00	0.00	3227708.85	1386069.06	40°23'25.008"N	104°40'57.036"W	polygon
SEC.20-T05N-R65W		0.00	0.00	0.00	3227708.85	1386069.06	40°23'25.008"N	104°40'57.036"W	polygon
GP-J EVANS 2-19-19 BHL REV-1 (1009'FNL & 460'FWL, SEC.19)		6910.00	-370.03	-8811.05	3218901.96	1385617.84	40°23'21.336"N	104°42'50.904"W	point
GP-J EVANS 2-19-19 LANDING POINT		6910.00	-400.34	-4470.99	3223241.93	1385627.54	40°23'21.048"N	104°41'54.816"W	point
GP-J EVANS 2-19-19 LANDING POINT REV-2		6945.00	-400.34	-4470.99	3223241.93	1385627.54	40°23'21.048"N	104°41'54.816"W	point
GP-J EVANS 2-19-19 BHL REV-2 (1009'FNL & 460'FWL, SEC.19)		6998.00	-370.03	-8811.05	3218901.96	1385617.84	40°23'21.336"N	104°42'50.904"W	point
GP-J EVANS 2-19-19 DRILLING CORRIDOR (60')		6998.00	0.00	0.00	3227708.85	1386069.06	40°23'25.008"N	104°40'57.036"W	polygon
SEC.19-T05N-R65W (460' SETBACK)		6999.00	0.00	0.00	3227708.85	1386069.06	40°23'25.008"N	104°40'57.036"W	polygon

WELLPATH COMPOSITION - Ref Wellbore: GP-J EVANS 2-19-19 AWB Ref Wellpath: GP-J EVANS 2-19-19 AWP

Start MD [ft]	End MD [ft]	Positional Uncertainty Model	Log Name/Comment	Wellbore
24.00	1100.00	Gyrodata standard - Continuous gyro	GYRODATA SURVEYS <100-1100>	GP-J EVANS 2-19-19 AWB
1100.00	8825.00	NaviTrak (Standard)	BHI MWD NAVITRAK (STD) 8.75" HOLE <1163-8825>	GP-J EVANS 2-19-19 AWB
8825.00	13016.00	NaviTrak (Standard)	BHI MWD/NAVITRAK (STD) 6.125" HOLE <8903-13016>	GP-J EVANS 2-19-19 AWB
13016.00	13082.00	Blind Drilling (std)	Projection to bit	GP-J EVANS 2-19-19 AWB



Actual Wellpath Report

GP-J EVANS 2-19-19 AWP

Page 8 of 8



REFERENCE WELLPATH IDENTIFICATION

Operator	EXTRACTION OIL & GAS	Slot	SLOT#01 GP-J EVANS 2-19-19 (574'FNL & 1305'FEL, SEC.20)
Area	COLORADO	Well	GP-J EVANS 2-19-19
Field	WELD COUNTY (NAD83/TRUE NORTH)	Wellbore	GP-J EVANS 2-19-19 AWB
Facility	SEC.20-T05N-R65W		

WELLPATH COMMENTS

MD [ft]	Inclination [°]	Azimuth [°]	TVD [ft]	Comment
1100.00	14.620	307.450	1092.26	TIED ONTO GYRO SURVEYS
1163.00	15.710	311.810	1153.07	FIRST BHI MWD SURVEY
8801.00	83.212	272.461	6995.49	CROSSED 460' SETBACK
13016.00	90.180	268.710	6977.56	LAST BHI MWD SURVEY
13082.00	90.180	268.710	6977.35	PROJECTION TO BIT