



Digital Cement Bond Log
Gamma Ray
CCL

Company		KERR MCGEE OIL AND GAS	
Well		CANNON W15-18D	
Field		WATTENBERG	
County		WELD	
State		COLORADO	
Location:		APL # : 05-123-31098	
SHL: 1285' FNL 1410' FWL		Other Services	
LAT: 40.14190 LONG:-104.76770			
SE/NE			
SEC 15 TWP 2N RGE 66W			
Permanent Datum		GL	Elevation
Log Measured From		KB 15'	4989'
Drilling Measured From		KB	Elevation
			K.B. 5004'
			D.F. 5003'
			G.L. 4989'
Date	2-26-2015		
Run Number	ONE		
Depth Driller	7750'		
Depth Logger	2025'		
Bottom Logged Interval	2014'		
Top Log Interval	SURFACE		
Open Hole Size	4.5		
Type Fluid	WATER		
Density / Viscosity	1.0		
Max. Recorded Temp.	91 DEG F		
Estimated Cement Top	160'		
Time Well Ready	N/A		
Time Logger on Bottom	N/A		
Equipment Number	3812		
Location	GREELEY		
Recorded By	N.POLLOCK		
Witnessed By	B.SMITH		
Borehole Record			
Run Number	Bit	From	To
ONE			
TWO			
Tubing Record			
Casing Record	Size	Wgt/Ft	Top
Surface String	8.62	24#	SURFACE
Prot. String			
Production String	4.5	11.6#	SURFACE
Liner			

<<< Fold Here >>>

All interpretations are opinions based on inferences from electrical or other measurements and we cannot and do not guarantee the accuracy or correctness of any interpretation, and we shall not, except in the case of gross or willful negligence on our part, be liable or responsible for any loss, costs, damages, or expenses incurred or sustained by anyone resulting from any interpretation made by any of our officers, agents or employees. These interpretations are also subject to our general terms and conditions set out in our current Price Schedule.

Comments

REPEAT PASS 300' TO SURFACE
FREE POINT CALIBRATION AT 1600' (81mV)
WELL LOADED 2/25/2015 AT 15:00

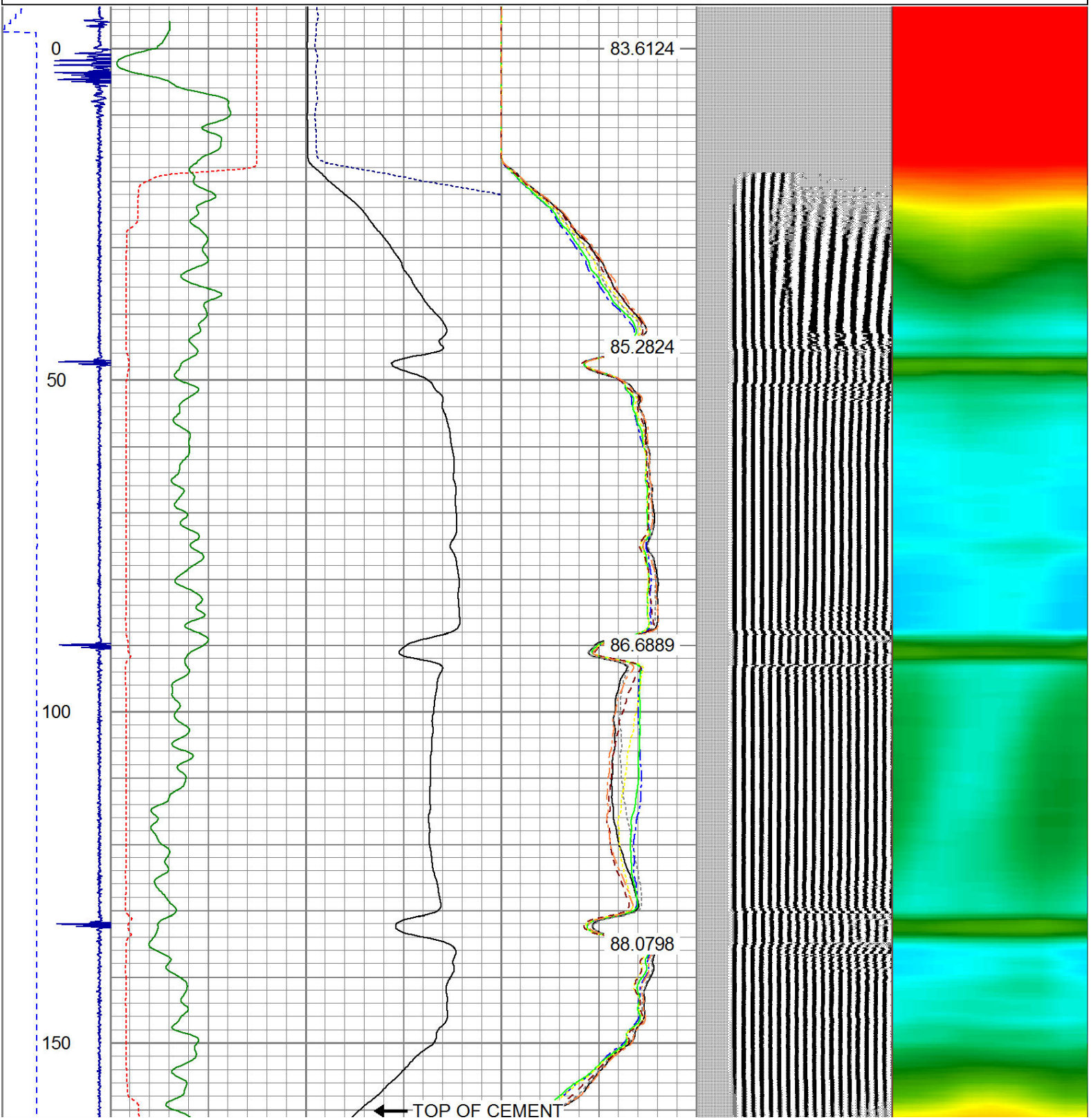
RAN C.B.L. TO VERIFY CEMENTN TOP.

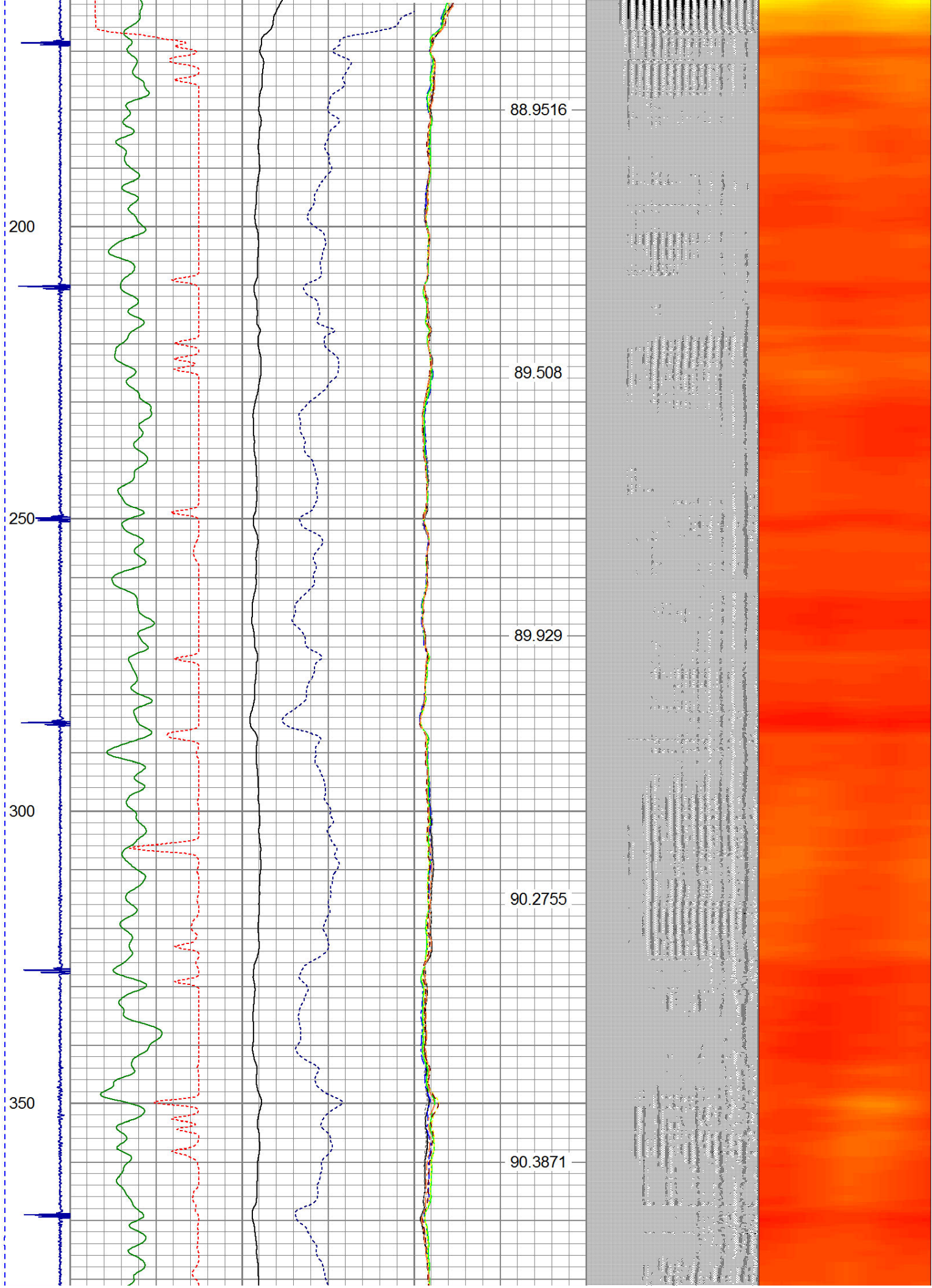
THANK YOU FOR USING WARRIOR ENERGY SERVICES!

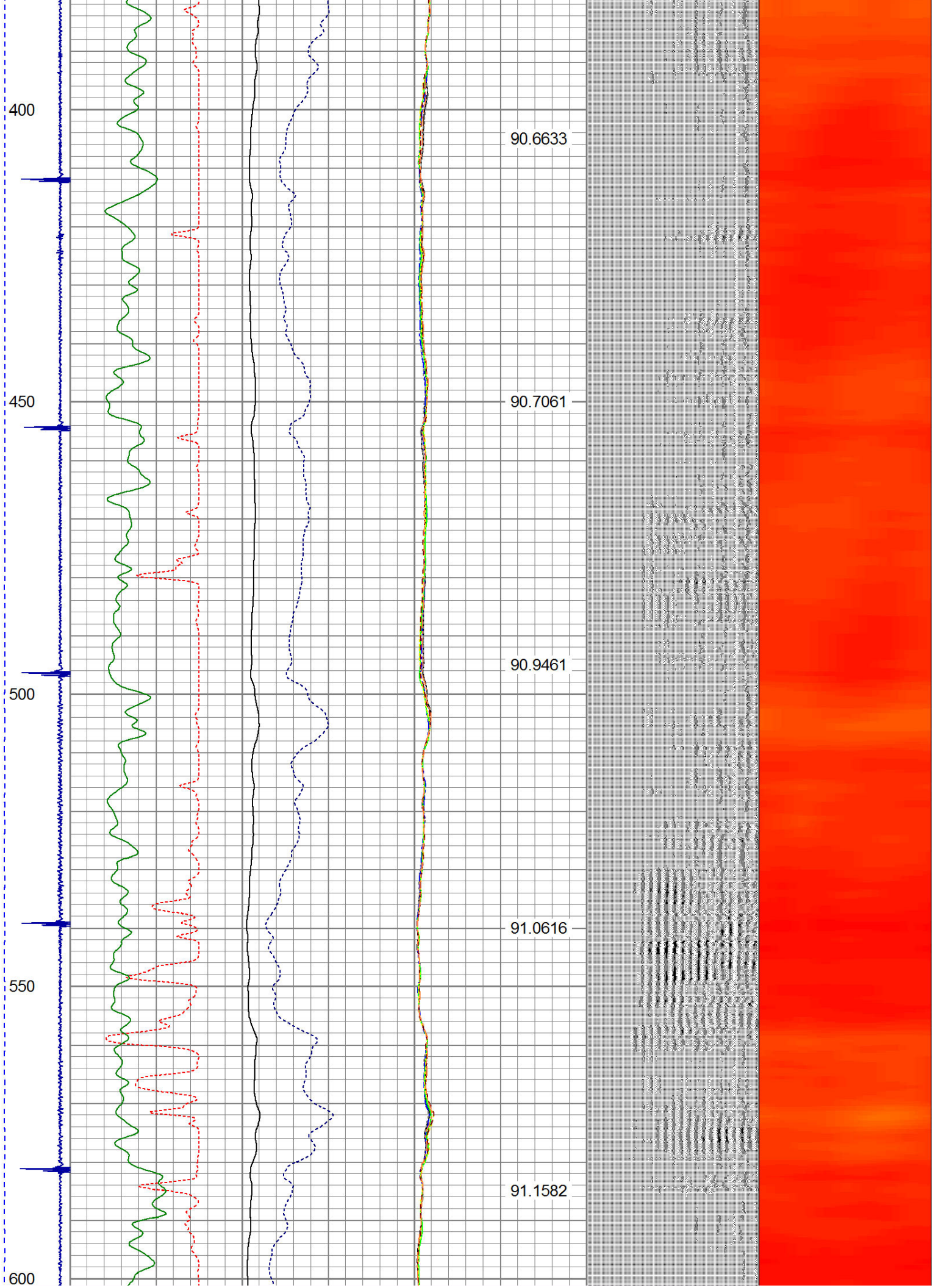
Sensor	Offset (ft)	Schematic	Description	Len (ft)	OD (in)	Wt (lb)
CENT	19.08					

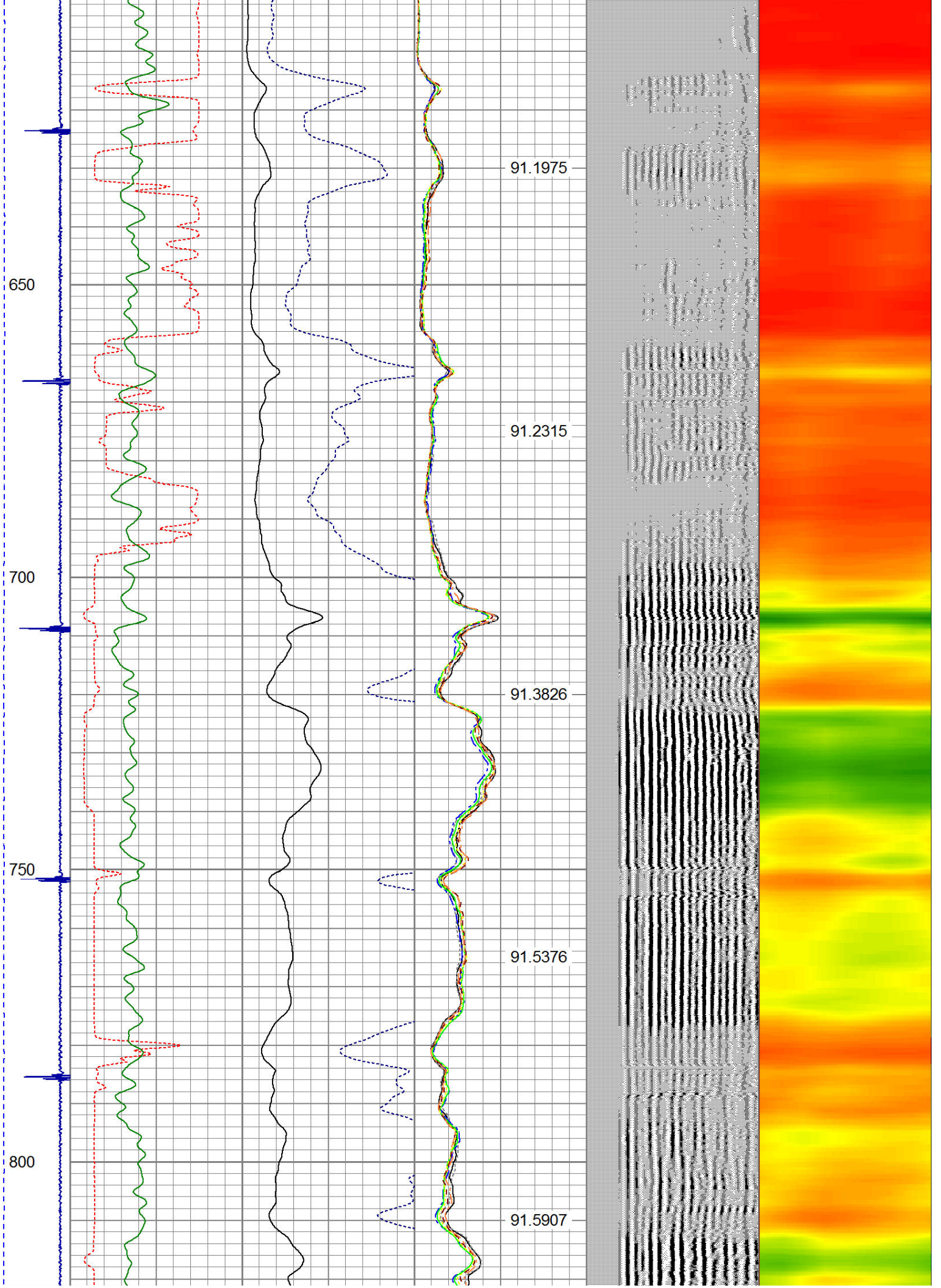
			PTS275	2.83	2.75	
HEADVOLT	16.25					
RBT	16.25					
IntTemp	14.83					
WVF3FT	11.58		RBT-Probe (Base)	8.92	2.75	90.00
WVFCAL	11.58		Probe Radii Bond Tool with Digital Telemetry			
WVFS1	11.58					
WVFS2	11.58					
WVFS3	11.58					
WVFS4	11.58					
WVFS5	11.58					
WVFS6	11.58					
WVFS7	11.58					
WVFS8	11.58					
WVF5FT	10.58					
CNLSC	6.00		CNT-Probe_B (275)	3.00	2.75	40.00
CNSSC	5.17		6 bow centralizer			
GR	4.33					
CCL	3.64					
			GR-Probe (275)	4.33	2.75	30.00
			Probe 2.75"			
GR	0.90					
Dataset: cannon w 15-18d.db: field/well/run1/pass5 Total Length: 19.08 ft Total Weight: 160.00 lb O.D. 2.75 in						

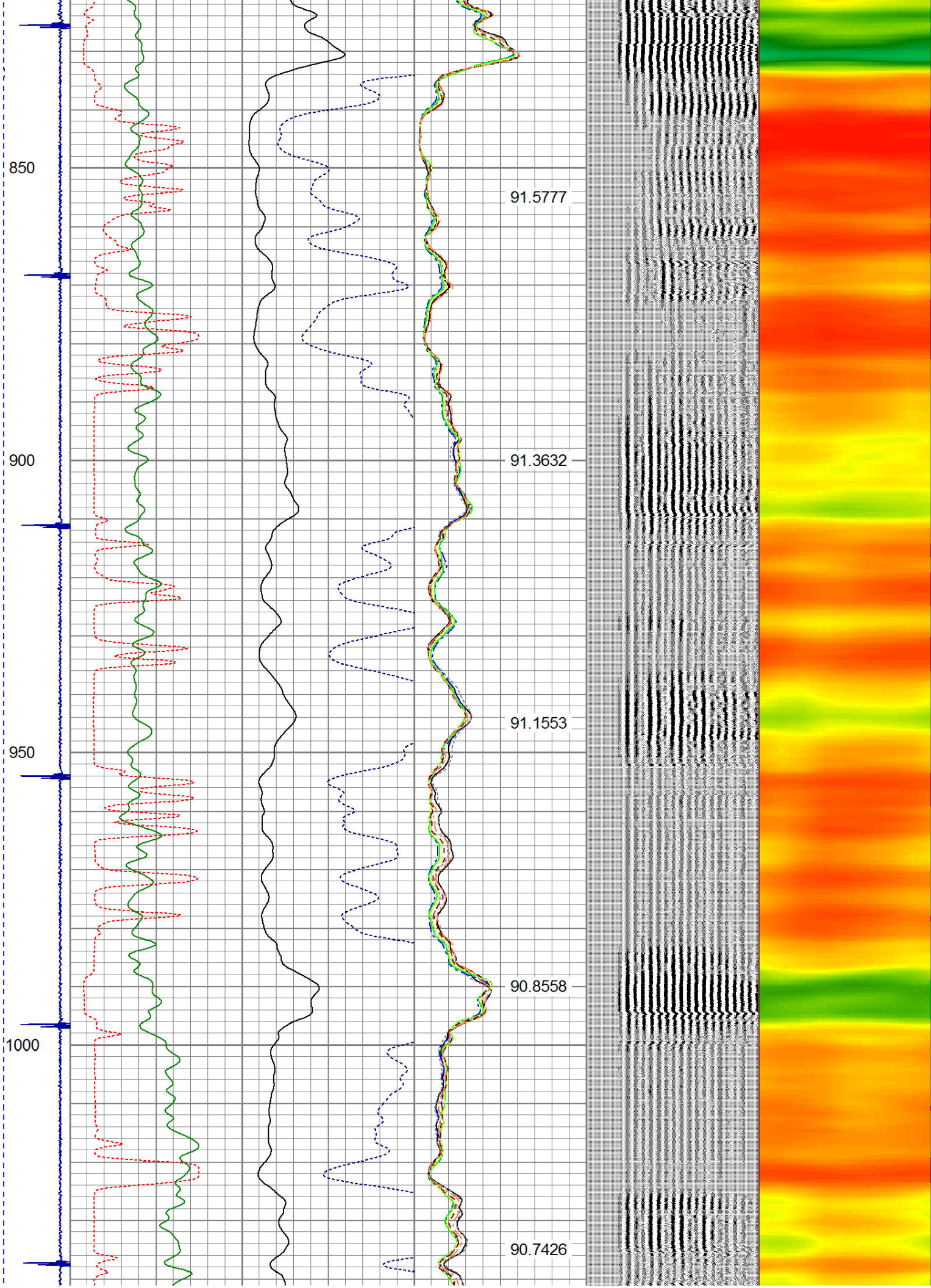
-9	CCL	1	200	TT (usec)	1000	0	AMP (mV)	100	0	AMPS1	100	200	VDL	1200	1	Cement Map	8
LSPD			0	GR (cps)	200	0	AMPx5 (mV)	20	0	AMPS2	100				1		100
(ft/min)			200	GR (cps)	400				0	AMPS4	100						
0		250							0	AMPS5	100						
									0	AMPS6	100						
									0	AMPS7	100						
									0	AMPS8	100						
										IntTemp							
										(degF)							











1050

1100

1150

1200

1250

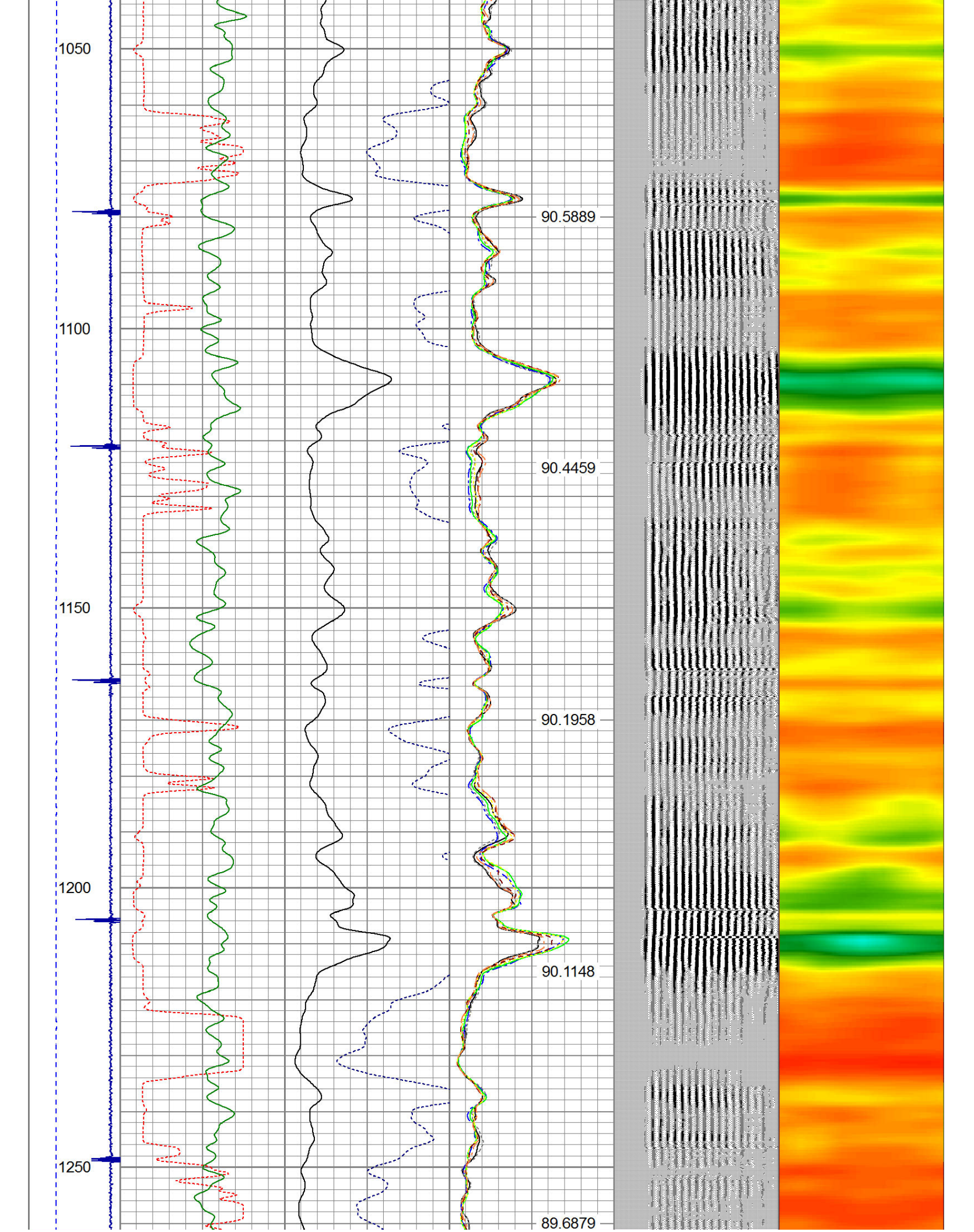
90.5889

90.4459

90.1958

90.1148

89.6879



1300

1350

1400

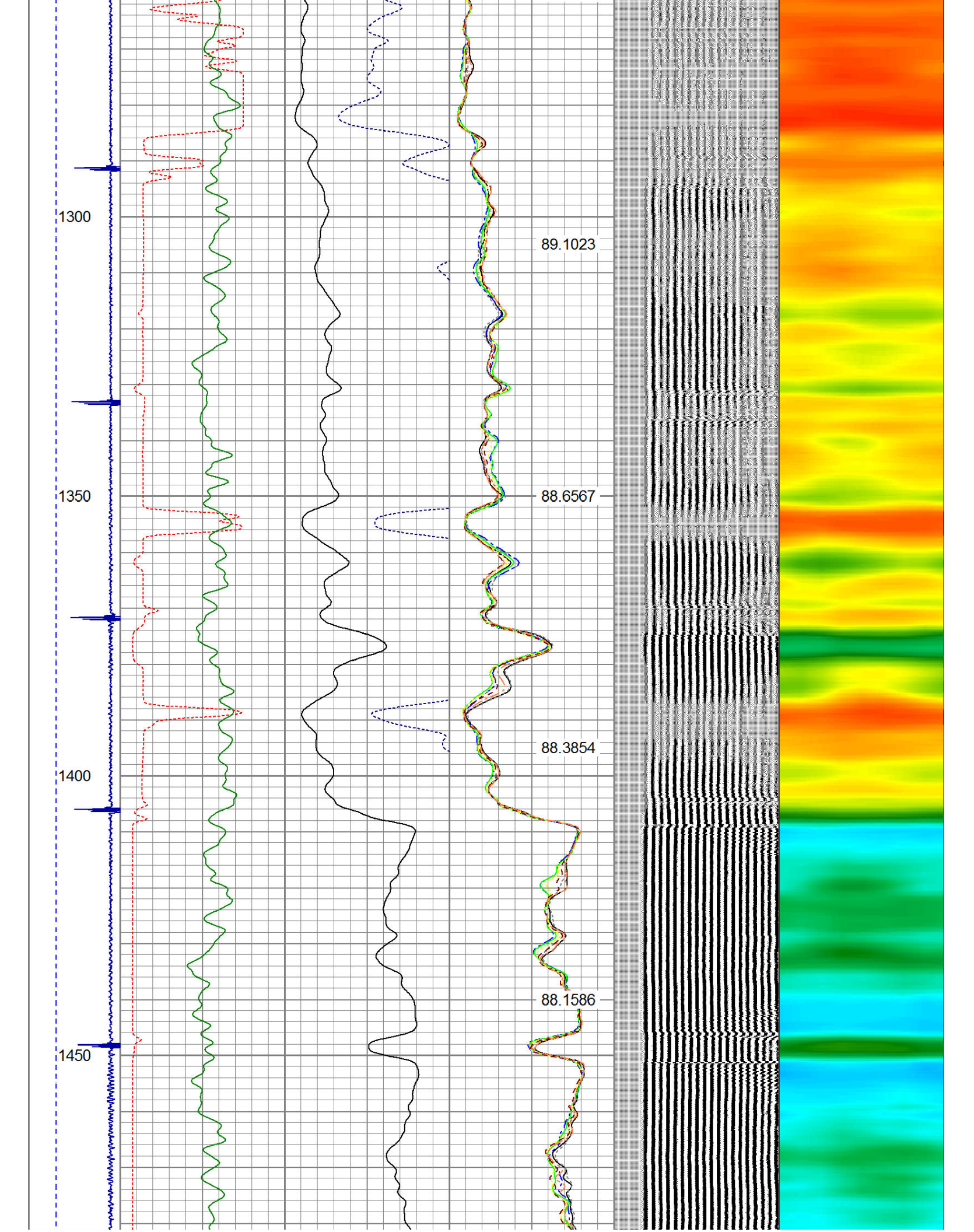
1450

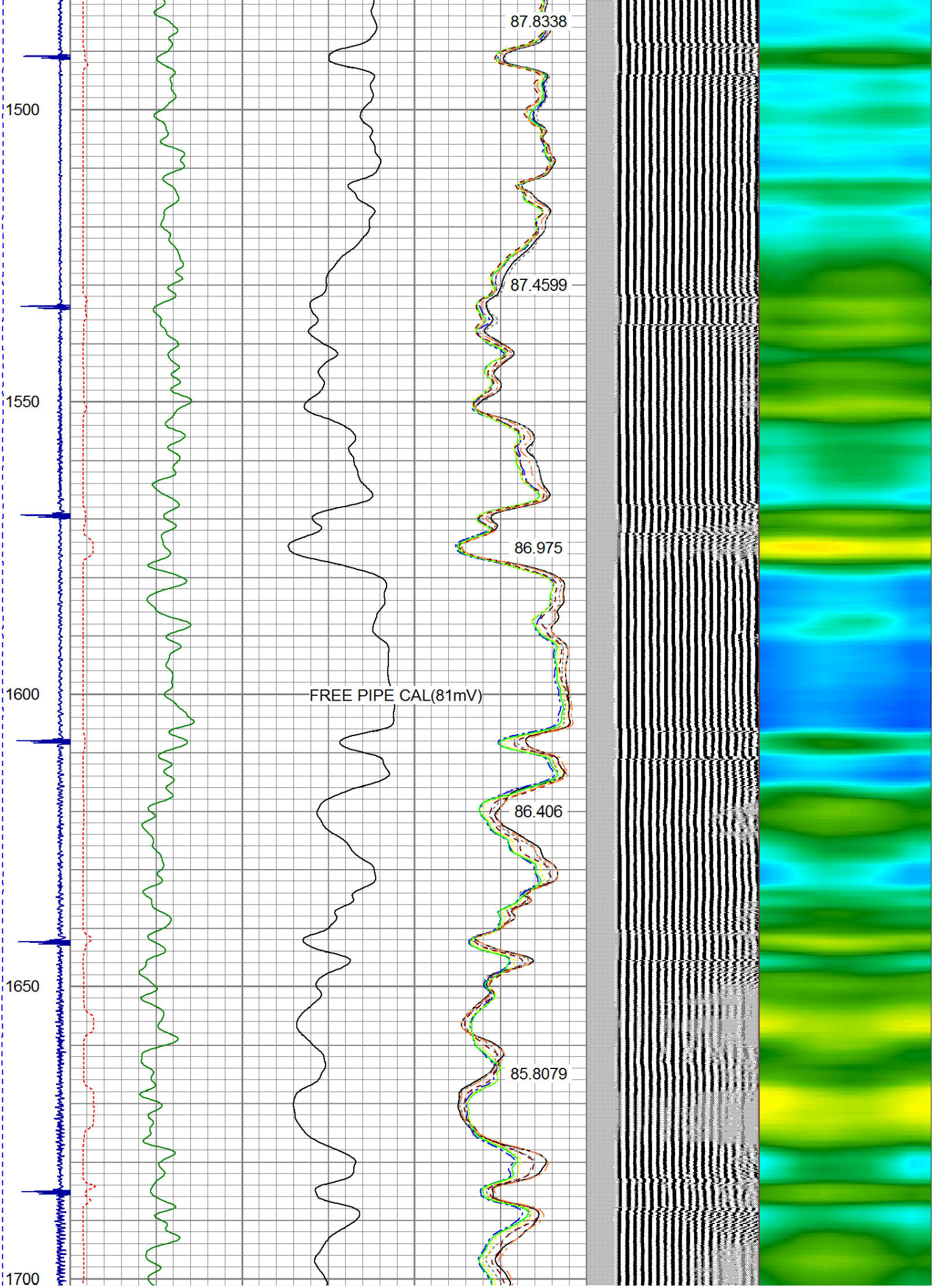
89.1023

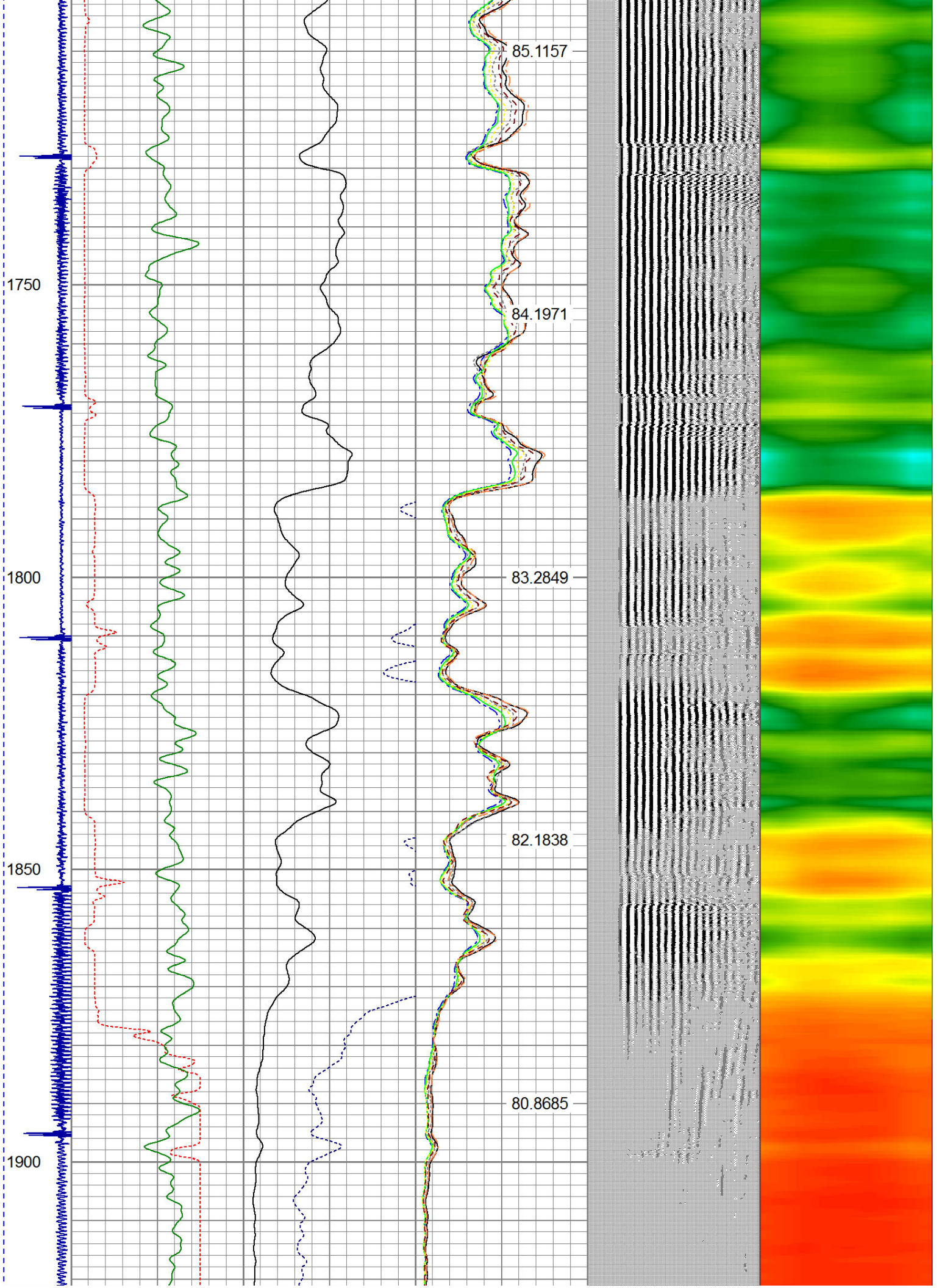
88.6567

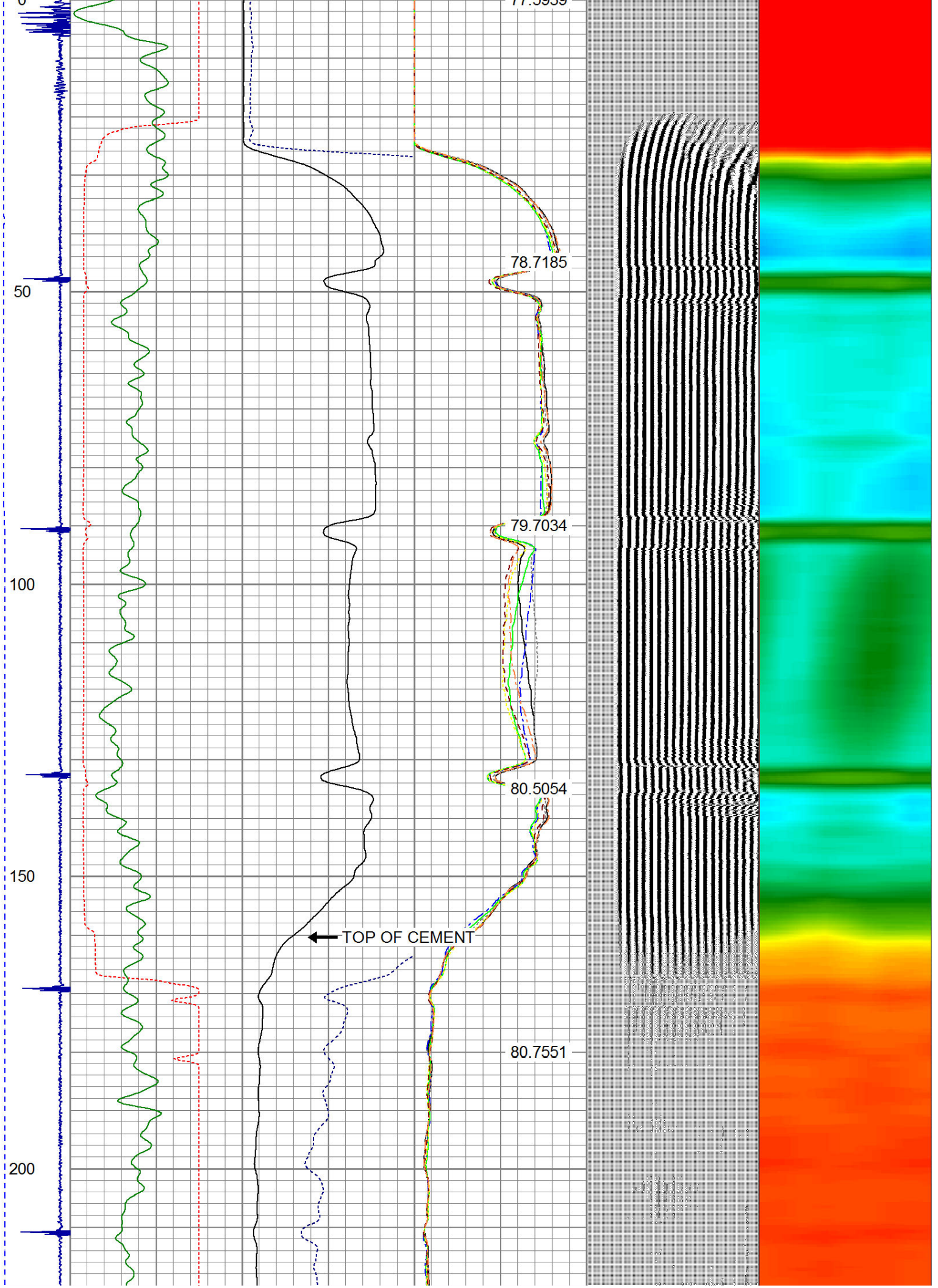
88.3854

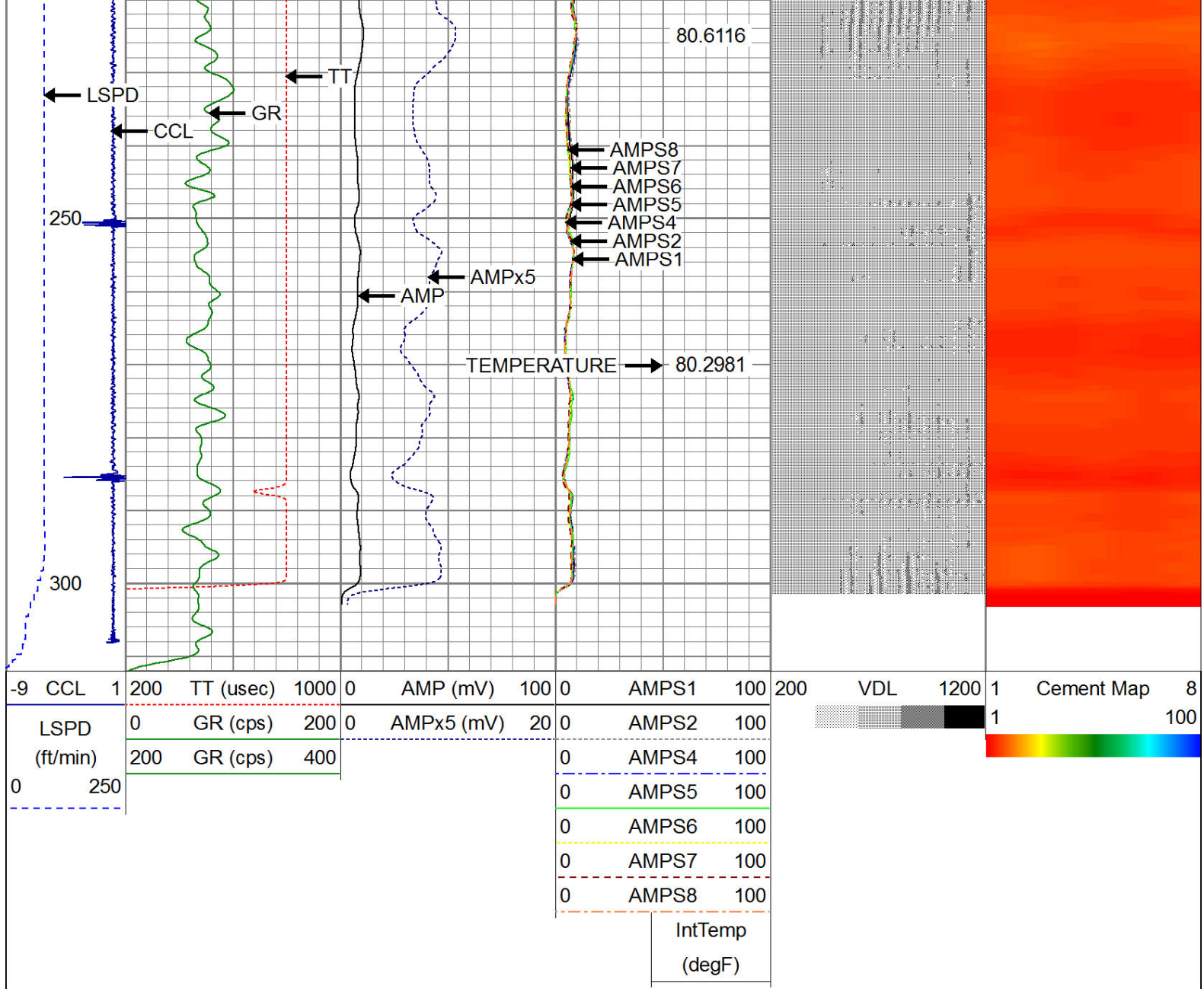
88.1586











WARRIOR
ENERGY SERVICES

Company KERR MCGEE OIL AND GAS
Well CANNON W15-18D
Field WATTENBERG
County WELD
State COLORADO