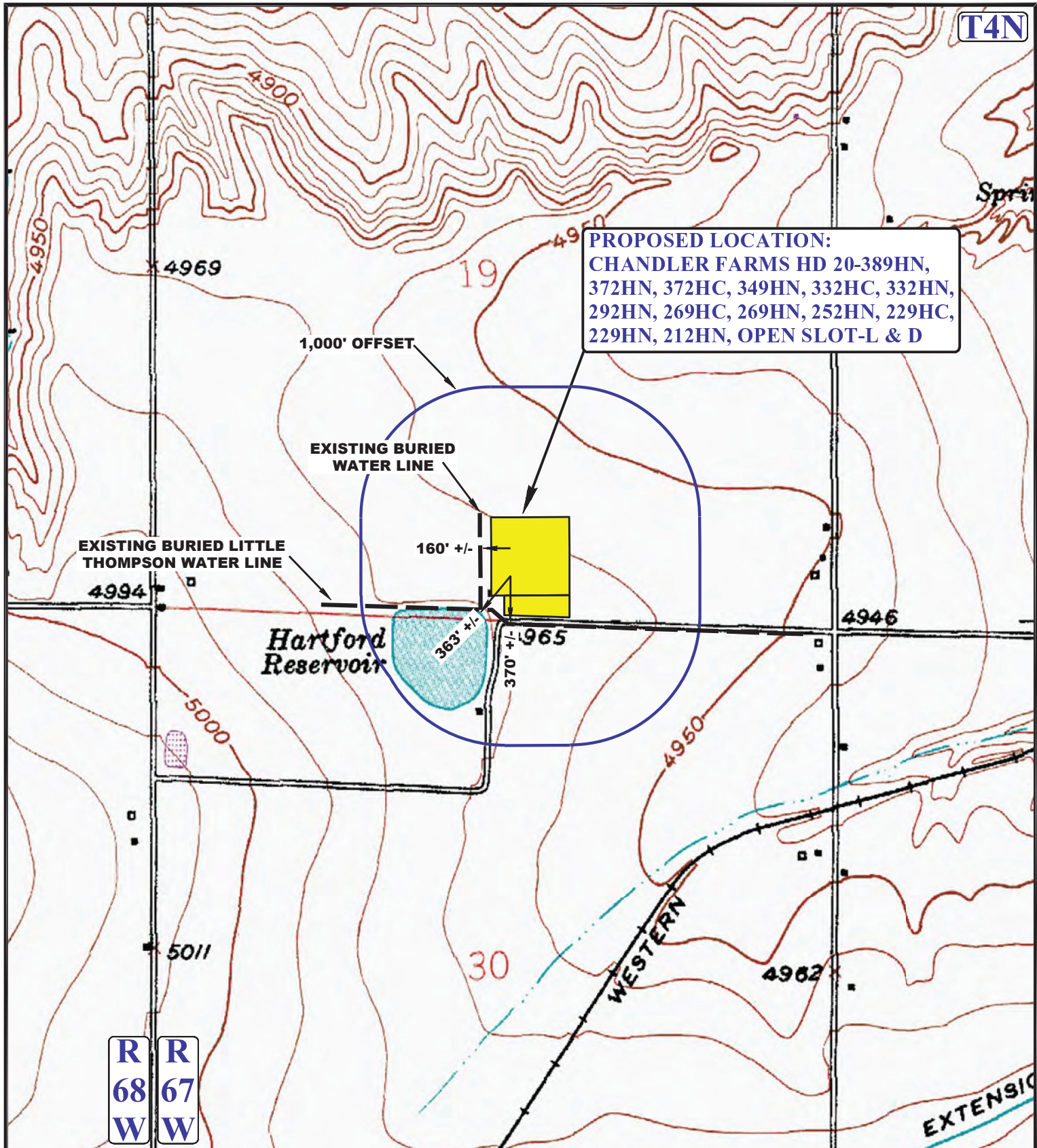


T4N

PROPOSED LOCATION:
CHANDLER FARMS HD 20-389HN,
372HN, 372HC, 349HN, 332HC, 332HN,
292HN, 269HC, 269HN, 252HN, 229HC,
229HN, 212HN, OPEN SLOT-L & D



LEGEND:

- WATER WELLS
- EXISTING DRAINAGE
- 1000' OFFSET
- EXISTING BURIED WATER LINE

GREAT WESTERN OIL & GAS COMPANY

CHANDLER FARMS HD 20-389HN, 372HN, 372HC,
349HN, 332HC, 332HN, 292HN, 269HC, 269HN, 252HN,
229HC, 229HN, 212HN, OPEN SLOT-L & D
SECTION 19, T4N, R67W, 6th P.M.
SW 1/4 SE 1/4



UELS, LLC
Corporate Office * 85 South 200 East
Vernal, UT 84078 * (435) 789-1017

DRAWN BY: J.L.G.	DATE DRAWN: 09-09-14
SCALE: 1" = 1000'	REVISED: 12-22-14

HYDROLOGY MAP	TOPO W
----------------------	---------------