

SEE TOPO "B"

1.4 MI. +/-

CR-42

3.0 MI. +/-
WESTERN CR-17

PROPOSED LOCATION:
CHANDLER FARMS HD 20-389HN,
372HN, 372HC, 349HN, 332HC, 332HN,
292HN, 269HC, 269HN, 252HN, 229HC,
229HN, 212HN, OPEN SLOT-L & D

R 68 W
R 67 W

R 67 W
R 66 W

LEGEND:

PROPOSED LOCATION



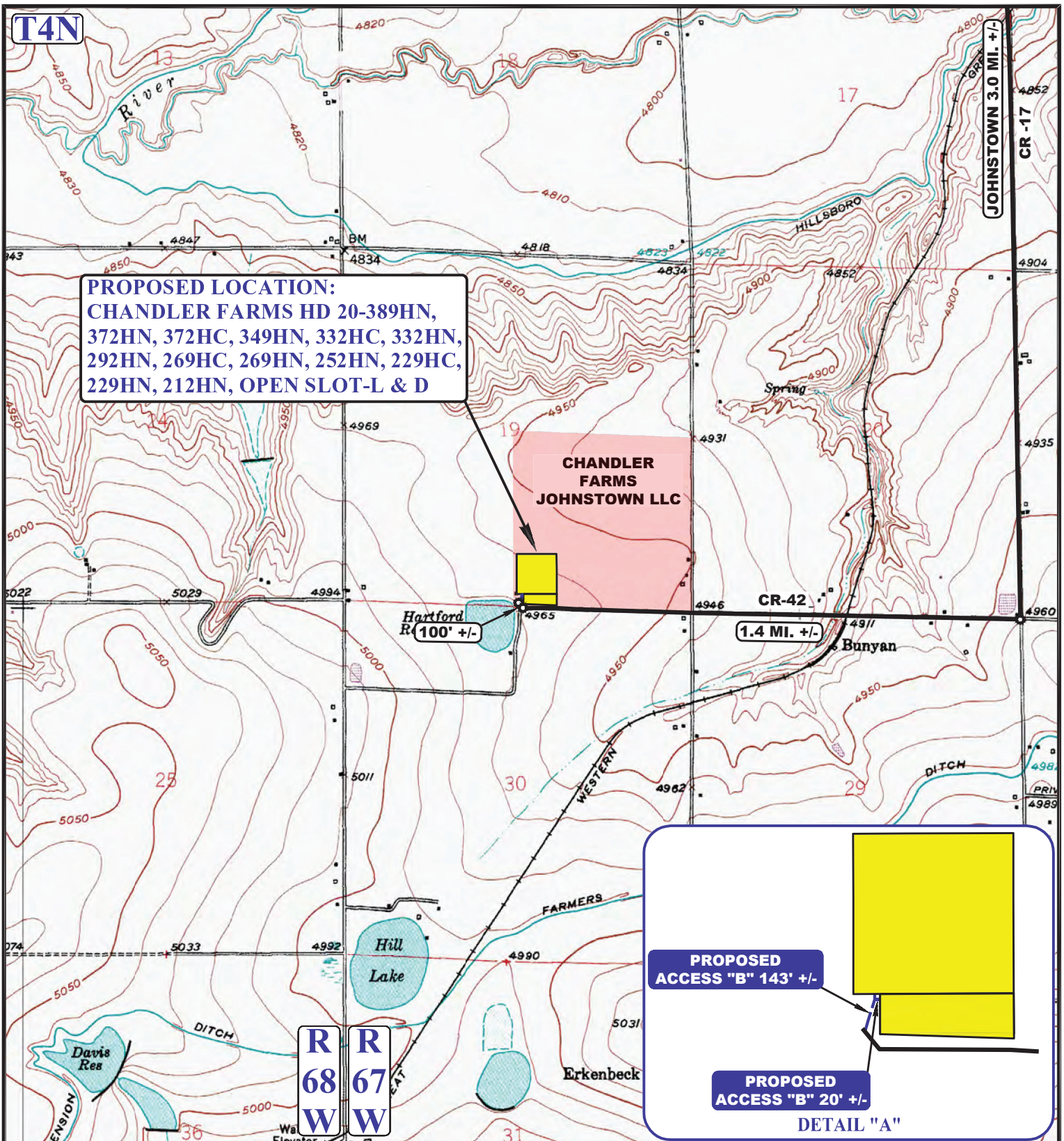
GREAT WESTERN OIL & GAS COMPANY

CHANDLER FARMS HD 20-389HN, 372HN, 372HC,
 349HN, 332HC, 332HN, 292HN, 269HC, 269HN, 252HN,
 229HC, 229HN, 212HN, OPEN SLOT-L & D
 SECTION 19, T4N, R67W, 6th P.M.
 SW 1/4 SE 1/4

DRAWN BY: J.L.G.	DATE DRAWN: 09-09-14
SCALE: 1:100,000	REVISED: 12-22-14
ACCESS ROAD MAP	TOPO A



UELS, LLC
 Corporate Office * 85 South 200 East
 Vernal, UT 84078 * (435) 789-1017



PROPOSED LOCATION:
CHANDLER FARMS HD 20-389HN,
372HN, 372HC, 349HN, 332HC, 332HN,
292HN, 269HC, 269HN, 252HN, 229HC,
229HN, 212HN, OPEN SLOT-L & D

**CHANDLER FARMS
 JOHNSTOWN LLC**

**PROPOSED
 ACCESS "B" 143' +/-**

**PROPOSED
 ACCESS "B" 20' +/-**

DETAIL "A"

NOTE: PARCEL DATA SHOWN HAS BEEN OBTAINED FROM VARIOUS SOURCES AND SHOULD BE USED FOR MAPPING, GRAPHIC AND PLANNING PURPOSES ONLY. NO WARRANTY IS MADE BY UINTAH ENGINEERING AND LAND SURVEYING (UELS) FOR ACCURACY OF THE PARCEL DATA.

LEGEND:
 ——— EXISTING ROAD
 - - - - - PROPOSED ROAD

GREAT WESTERN OIL & GAS COMPANY

CHANDLER FARMS HD 20-389HN, 372HN, 372HC,
 349HN, 332HC, 332HN, 292HN, 269HC, 269HN, 252HN,
 229HC, 229HN, 212HN, OPEN SLOT-L & D
 SECTION 19, T4N, R67W, 6th P.M.
 SW 1/4 SE 1/4



UELS, LLC
 Corporate Office * 85 South 200 East
 Vernal, UT 84078 * (435) 789-1017

DRAWN BY: J.L.G.	DATE DRAWN: 09-09-14
SCALE: 1" = 2000'	REVISED: 12-22-14

ACCESS ROAD MAP | **TOPO B**