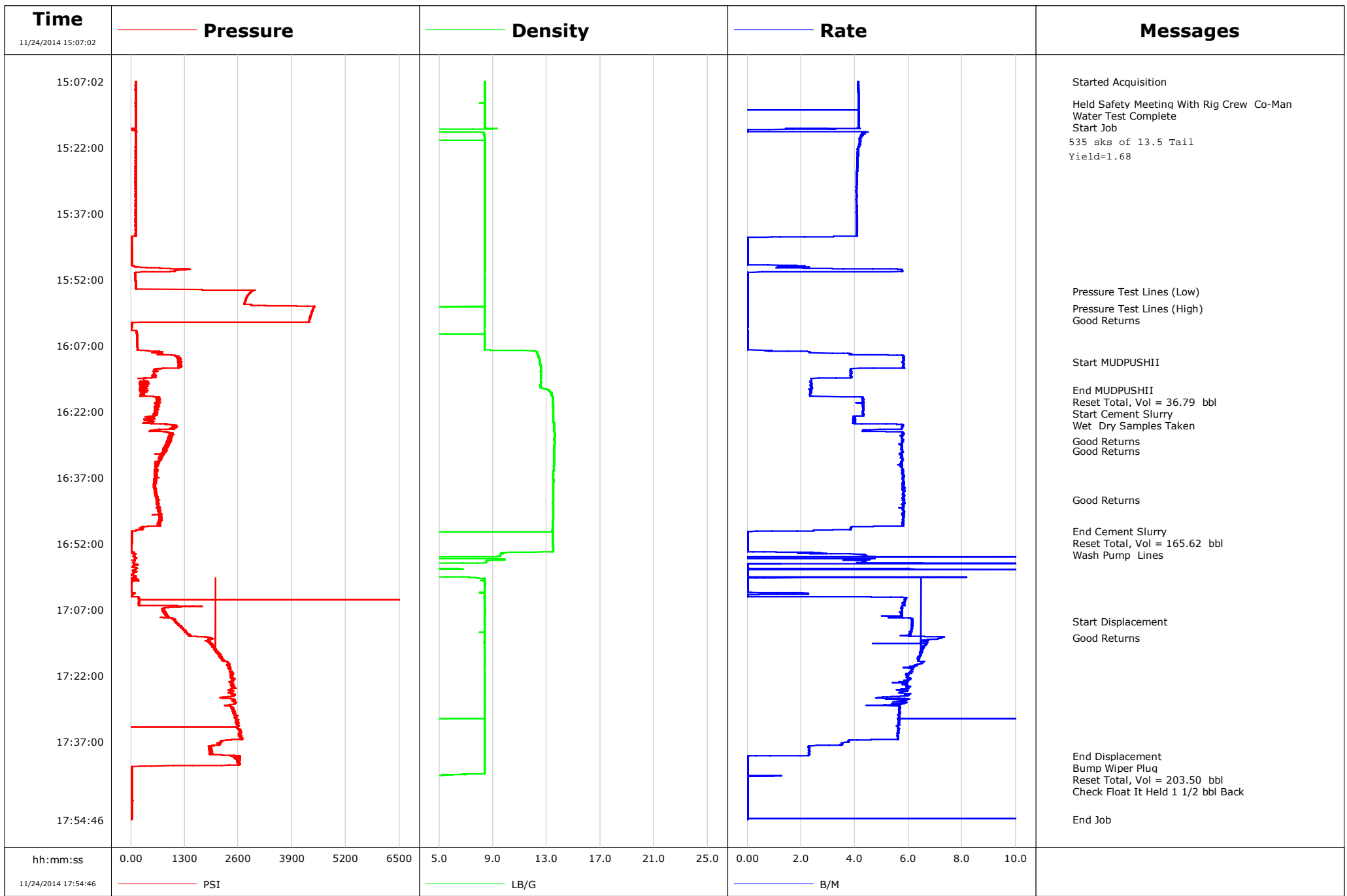


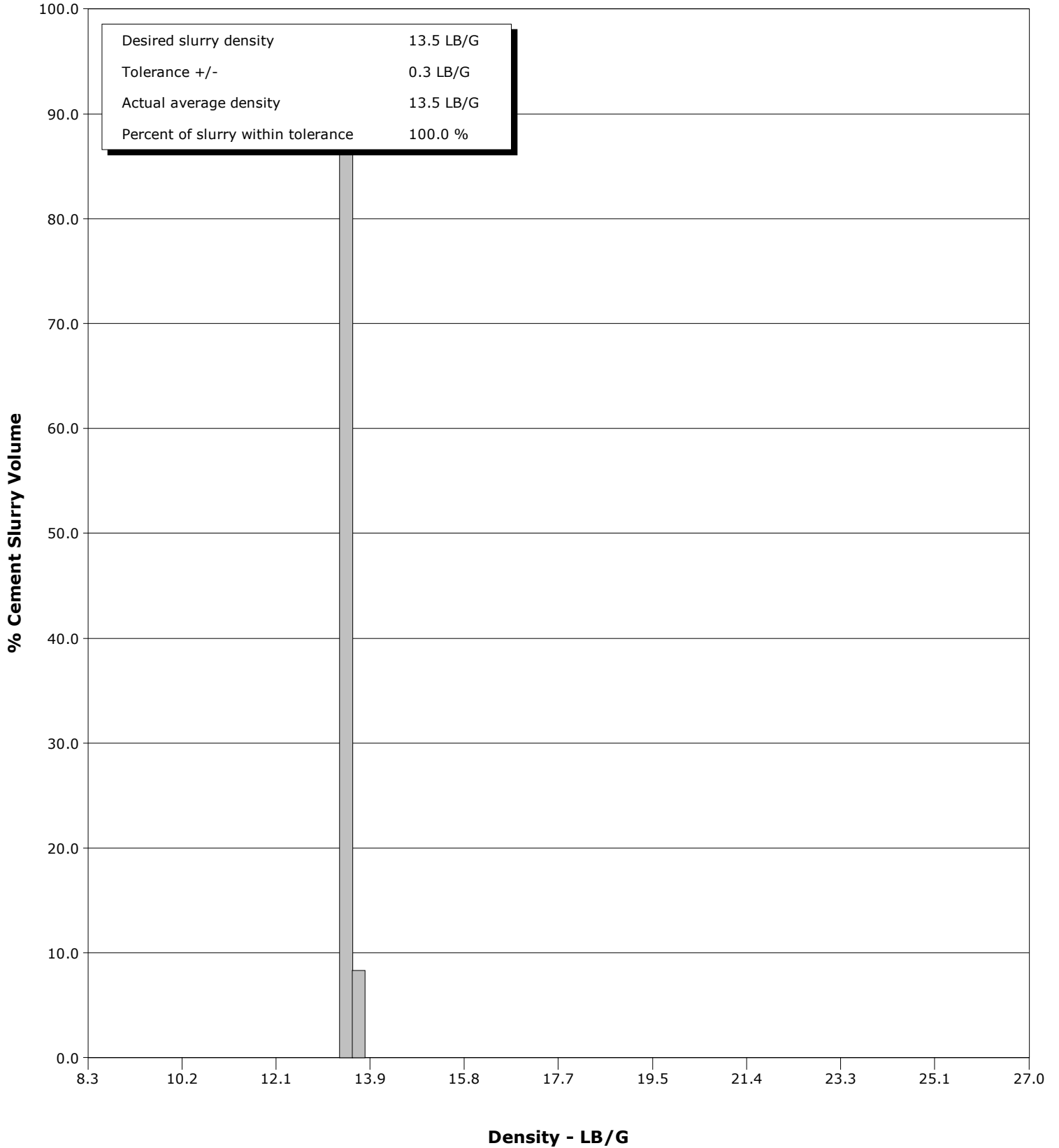
Well	Grant Elmquist 2E-14H	Client	Encana
Field	DJ	SIR No.	D4RN-00183
Engineer	Wayne Silvester/Greg Black	Job Type	Production
Country	United States	Job Date	11-24-2014



Well Grant Elmquist 2E-14H
Field DJ
Engineer Wayne Silvester/Greg Black
Country United States

Client Encana
SIR No. D4RN-00183
Job Type Production
Job Date 11-24-2014

Cement Slurry - 11/24/2014 16:18:08 to 11/24/2014 16:49:11



					Customer			Job Number							
					Encana			D4RN-00183							
Well			Location (legal)			Schlumberger Location			Job Start						
Grant Elmquist 2E-14H 2E-14H			2173			Cheyenne			Nov/24/2014						
Field		Formation Name/Type			Deviation		Bit Size		Well MD		Well TVD				
DJ		Shale			deg		in		13640.0 ft		13665.0 ft				
County		State/Province			BHP		BHST		BHCT		Pore Press. Gradient				
Weld		Colorado			3406 psi		215 degF		215 degF		lb/gal				
Well Master		API/UWI													
0631597575		05123376460000													
Rig Name		Drilled For		Service Via		Casing/Liner									
Ensign 135		Oil & Gas		Land		Depth, ft		Size, in		Weight, lb/ft		Grade	Thread		
Offshore Zone		Well Class		Well Type		13665.0		4.5		13.5		N/A	N/A		
		New		Other		0.0		0.0		0.0					
Drilling Fluid Type		Max. Density		Plastic Viscosity		Tubing/Drill Pipe									
		lb/gal		cP		T/D		Depth, ft		Size, in		Weight, lb/ft		Grade	Thread
Service Line		Job Type													
Cementing		Production													
Max. Allowed Tub. Press		Max. Allowed Ann. Press		WH Connection		Perforations/Open Hole									
psi		7000 psi		4 1/2"		Top, ft		Bottom, ft		shot/ft		No. of Shots		Total Interval	
Service Instructions						ft		ft						ft	
						ft		ft						Diameter	
						ft		ft						in	
Treat Down			Displacement			Packer Type			Packer Depth						
Casing			203.0 bbl						ft						
Tubing Vol.			Casing Vol.			Annular Vol.			Openhole Vol.						
bbl			204.0 bbl			bbl			bbl						
Casing/Tubing Secured		1 Hole Vol. Circulated prior to Cement			Casing Tools				Squeeze Job						
<input checked="" type="checkbox"/>		<input checked="" type="checkbox"/>													
Lift Pressure		Shoe Type			Shoe Depth			Squeeze Type							
3406 psi		Float			13665.0 ft										
Pipe Rotated		Pipe Reciprocated			Stage Tool Type				Tool Depth						
<input type="checkbox"/>		<input type="checkbox"/>							ft						
No. Centralizers		Top Plugs		Bottom Plugs		Stage Tool Depth				Tail Pipe Size					
						ft				in					
Cement Head Type					Collar Type				Tail Pipe Depth						
					Float				ft						
Job Scheduled For		Arrived on Location		Leave Location		Collar Depth				Sqz. Total Vol.					
Nov/24/2014		Nov/24/2014		Nov/24/2014		13640.0 ft				bbl					
Date	Time 24-hr clock	Treating Pressure PSI	Flow Rate B/M	Density LB/G	Volume BBL	Casing Test PSI	Message								
11/24/2014	15:07:02	112	4.1	8.39	0.0	-1	Started Acquisition								
11/24/2014	15:12:00	118	4.1	8.40	20.5	-1	Held Safety Meeting With Rig Crew Co-Man								
11/24/2014	15:12:01	117	4.1	8.40	20.6	-1	Water Test Complete								
11/24/2014	15:12:03	117	4.1	8.40	20.7	-1									
11/24/2014	15:16:01	120	4.2	8.39	36.9	-1	Start Job								
11/24/2014	15:17:04	115	4.2	8.39	41.3	-1									
11/24/2014	15:22:05	118	4.1	8.42	59.8	-1									
11/24/2014	15:27:06	114	4.1	8.41	80.4	-1									
11/24/2014	15:32:07	108	4.0	8.40	100.8	-1									
11/24/2014	15:37:08	112	4.1	8.40	121.1	-1									
11/24/2014	15:42:09	115	4.1	8.39	141.5	-1									
11/24/2014	15:47:10	13	0.0	8.39	142.2	-1									
11/24/2014	15:52:11	107	0.0	8.39	147.6	-1									
11/24/2014	15:54:39	2942	0.0	8.38	147.6	-1	Pressure Test Lines (Low)								
11/24/2014	15:57:12	2756	0.0	8.38	0.0	-1									
11/24/2014	15:58:30	4412	0.0	8.38	0.0	-1	Pressure Test Lines (High)								
11/24/2014	15:59:54	4358	0.0	8.38	0.0	-1	Good Returns								
11/24/2014	16:02:13	17	0.0	8.39	0.0	-1									
11/24/2014	16:07:14	153	0.0	8.39	0.0	-1									
11/24/2014	16:10:51	1218	5.8	12.50	12.5	-1	Start MUDPUSHII								
11/24/2014	16:12:15	768	4.0	12.56	20.5	-1									

Well			Field		Job Start	Customer		Job Number
Grant Elmquist 2E-14H 2E-14H			DJ		Nov/24/2014	Encana		D4RN-00183
Date	Time 24-hr clock	Treating Pressure PSI	Flow Rate B/M	Density LB/G	Volume BBL	Casing Test PSI	Message	
11/24/2014	16:17:16	211	2.4	13.18	35.6	-1		
11/24/2014	16:17:46	239	2.4	13.36	36.8	-1	Reset Total, Vol = 36.79 bbl	
11/24/2014	16:18:08	287	2.3	13.38	37.7	-1	Start Cement Slurry	
11/24/2014	16:18:13	235	2.3	13.39	37.8	-1	Wet Dry Samples Taken	
11/24/2014	16:22:17	564	4.3	13.49	54.5	-1		
11/24/2014	16:27:18	944	5.8	13.61	78.3	-1		
11/24/2014	16:28:46	961	5.8	13.59	86.7	-1	Good Returns	
11/24/2014	16:31:02	843	5.8	13.56	99.8	-1	Good Returns	
11/24/2014	16:32:19	762	5.8	13.56	107.1	-1		
11/24/2014	16:37:20	561	5.8	13.50	136.0	-1		
11/24/2014	16:42:08	640	5.8	13.48	163.9	-1	Good Returns	
11/24/2014	16:42:21	649	5.8	13.48	165.2	-1		
11/24/2014	16:47:22	701	5.8	13.46	194.3	-1		
11/24/2014	16:49:11	22	0.9	13.44	202.4	-1	End Cement Slurry	
11/24/2014	16:49:15	27	0.1	13.46	202.4	-1	Reset Total, Vol = 165.62 bbl	
11/24/2014	16:49:17	27	0.0	13.47	202.4	-1	Wash Pump Lines	
11/24/2014	16:52:23	4	0.0	13.47	202.4	-1		
11/24/2014	16:57:24	36	0.0	0.01	212.3	-1		
11/24/2014	17:02:25	3	0.0	8.39	215.3	-1		
11/24/2014	17:07:26	779	5.7	8.39	235.2	-1		
11/24/2014	17:09:36	1074	6.1	8.37	247.9	-1	Start Displacement	
11/24/2014	17:12:27	1349	6.1	8.36	265.3	-1		
11/24/2014	17:13:18	1845	7.3	8.36	270.6	-1	Good Returns	
11/24/2014	17:17:28	2166	6.4	8.37	298.0	-1		
11/24/2014	17:22:29	2414	6.0	8.37	329.2	-1		
11/24/2014	17:27:30	2490	5.9	8.38	358.1	-1		
11/24/2014	17:32:31	2570	5.7	8.38	388.9	-1		
11/24/2014	17:37:32	2106	3.5	8.38	415.3	-1		
11/24/2014	17:40:14	2400	0.8	8.38	421.9	-1	End Displacement	
11/24/2014	17:40:16	2642	0.3	8.38	421.9	-1	Bump Wiper Plug	
11/24/2014	17:40:44	2589	0.0	8.38	421.9	-1	Reset Total, Vol = 203.50 bbl	
11/24/2014	17:42:33	475	0.0	8.38	421.9	-1		
11/24/2014	17:44:47	16	1.3	1.41	421.9	-1	Check Float It Held 1 1/2 bbl Back	
11/24/2014	17:47:34	17	0.0	0.03	422.0	-1		
11/24/2014	17:52:35	13	0.0	0.03	422.0	-1		

Post Job Summary

Average Pump Rates, bbl/min				Volume of Fluid Injected, bbl			
Slurry	N2	Mud	Maximum Rate	Total Slurry	Mud	Spacer	N2
4.9			167.7	164.9	0.0	37.6	
Treating Pressure Summary, psi				Breakdown Fluid			
Maximum	Final	Average	Bump Plug to	Breakdown	Type	Volume	Density
4500	13	843	3906			bbl	lb/gal
Avg. N2 Percent	Designed Slurry Volume		Displacement	Mix Water Temp	Cement Circulated to Surface?		Volume
%	161.0 bbl		203.5 bbl	60 degF	<input type="checkbox"/>		bbl
Customer or Authorized Representative				Schlumberger Supervisor		Circulation Lost	
Bill Laforce				Wayne Silvester/Greg Black		<input type="checkbox"/>	
						Job Completed <input checked="" type="checkbox"/>	
						-	