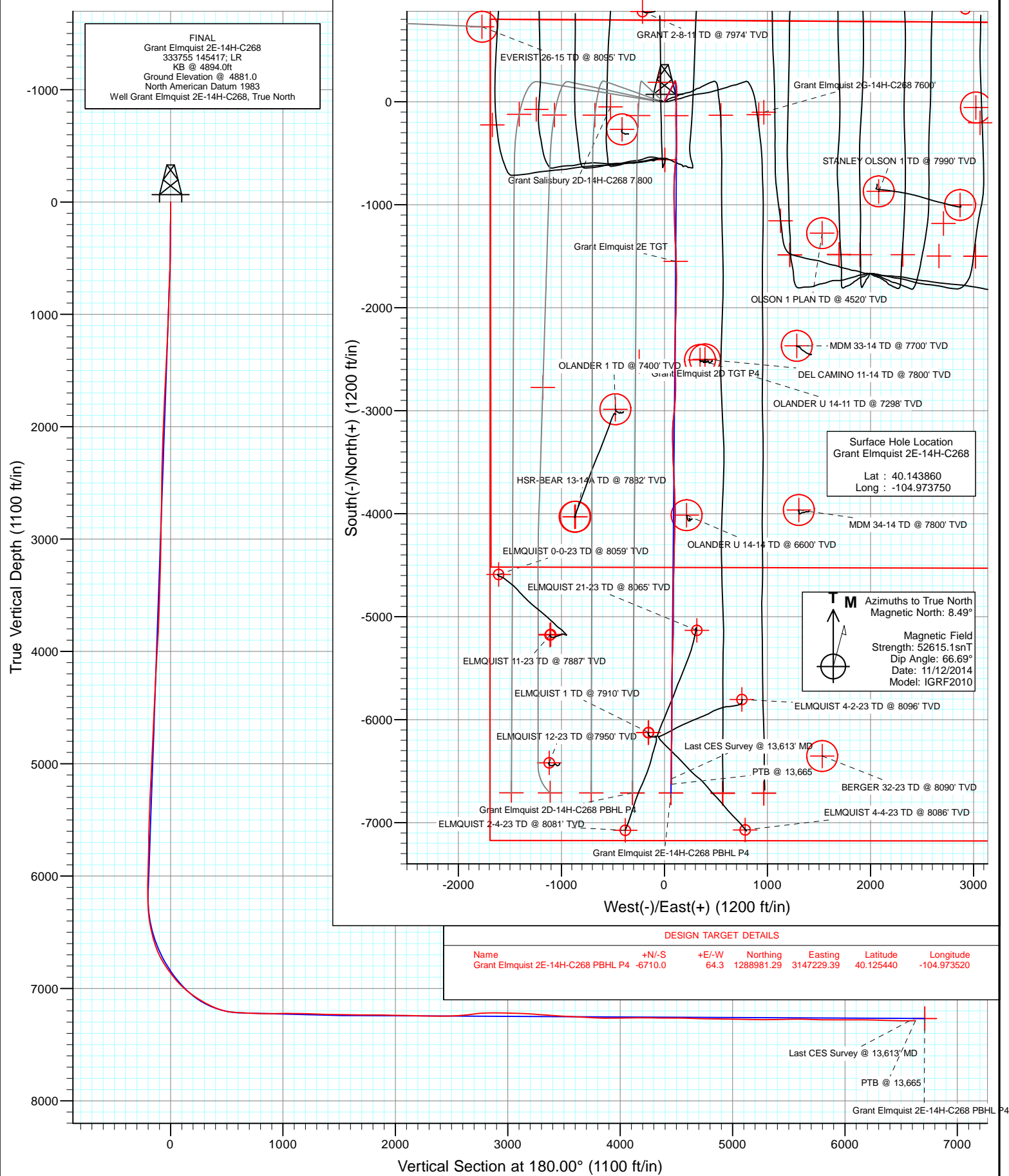




Project: DJ Wattenberg
 Site: S14-T2N-R68W (Grant Elmquist/Salisbury/Hurt)
 Well: Grant Elmquist 2E-14H-C268
 Wellbore: Hz
 Design: FINAL



Survey Report

Company: EnCana Oil & Gas (USA) Inc	Local Co-ordinate Reference: Well Grant Elmquist 2E-14H-C268
Project: DJ Wattenberg	TVD Reference: KB @ 4894.0ft
Site: S14-T2N-R68W (Grant Elmquist/Salisbury/Hurt)	MD Reference: KB @ 4894.0ft
Well: Grant Elmquist 2E-14H-C268	North Reference: True
Wellbore: Hz	Survey Calculation Method: Minimum Curvature
Design: SURVEYS	Database: USA EDM 5000 Multi Users DB

Project DJ Wattenberg		
Map System: US State Plane 1983	System Datum: Mean Sea Level	
Geo Datum: North American Datum 1983		
Map Zone: Colorado Northern Zone		

Site S14-T2N-R68W (Grant Elmquist/Salisbury/Hurt)				
Site Position:	Northing: 1,295,686.81 ft	Latitude: 40.143850		
From: Lat/Long	Easting: 3,147,060.98 ft	Longitude: -104.973980		
Position Uncertainty: 0.0 ft	Slot Radius: 13.200 in	Grid Convergence: 0.34 °		

Well Grant Elmquist 2E-14H-C268				
Well Position	+N/-S 0.0 ft	Northing: 1,295,690.82 ft	Latitude: 40.143860	
	+E/-W 0.0 ft	Easting: 3,147,125.26 ft	Longitude: -104.973750	
Position Uncertainty	0.0 ft	Wellhead Elevation: ft	Ground Level: 4,881.0 ft	

Wellbore Hz					
Magnetics	Model Name	Sample Date	Declination (°)	Dip Angle (°)	Field Strength (nT)
	IGRF2010	11/12/2014	8.50	66.69	52,615

Design SURVEYS				
Audit Notes:				
Version: 1.0	Phase: ACTUAL	Tie On Depth: 0.0		
Vertical Section:	Depth From (TVD) (ft)	+N/-S (ft)	+E/-W (ft)	Direction (°)
	0.0	0.0	0.0	180.00

Survey Program		Date 11/23/2014
From (ft)	To (ft)	Survey (Wellbore)
143.0	13,665.0	Survey #1 (Hz)
		Tool Name Geolink MWD
		Description Geolink MWD

Measured Depth (ft)	Inclination (°)	Azimuth (°)	Vertical Depth (ft)	+N/-S (ft)	+E/-W (ft)	Vertical Section (ft)	Dogleg Rate (°/100ft)	Build Rate (°/100ft)	Formations / Comments
0.0	0.00	0.00	0.0	0.0	0.0	0.0	0.00	0.00	
143.0	0.40	18.60	143.0	0.5	0.2	-0.5	0.28	0.28	
234.0	0.40	2.10	234.0	1.1	0.3	-1.1	0.13	0.00	
325.0	0.70	352.80	325.0	2.0	0.2	-2.0	0.34	0.33	
417.0	0.70	341.20	417.0	3.1	0.0	-3.1	0.15	0.00	
509.0	0.60	347.50	509.0	4.1	-0.3	-4.1	0.13	-0.11	
601.0	2.60	25.70	600.9	6.4	0.5	-6.4	2.35	2.17	
693.0	2.80	20.50	692.8	10.4	2.2	-10.4	0.34	0.22	
785.0	1.90	50.60	784.8	13.5	4.1	-13.5	1.63	-0.98	
803.0	2.00	42.00	802.8	13.9	4.6	-13.9	1.72	0.56	
927.0	1.70	42.90	926.7	16.8	7.3	-16.8	0.24	-0.24	
1,022.0	2.90	36.90	1,021.6	19.8	9.7	-19.8	1.29	1.26	
1,117.0	2.90	36.10	1,116.5	23.7	12.5	-23.7	0.04	0.00	
1,211.0	3.00	30.90	1,210.4	27.7	15.2	-27.7	0.30	0.11	

Survey Report

Company:	EnCana Oil & Gas (USA) Inc	Local Co-ordinate Reference:	Well Grant Elmquist 2E-14H-C268
Project:	DJ Wattenberg	TVD Reference:	KB @ 4894.0ft
Site:	S14-T2N-R68W (Grant Elmquist/Salisbury/Hurt)	MD Reference:	KB @ 4894.0ft
Well:	Grant Elmquist 2E-14H-C268	North Reference:	True
Wellbore:	Hz	Survey Calculation Method:	Minimum Curvature
Design:	SURVEYS	Database:	USA EDM 5000 Multi Users DB

Survey									
Measured Depth (ft)	Inclination (°)	Azimuth (°)	Vertical Depth (ft)	+N/-S (ft)	+E/-W (ft)	Vertical Section (ft)	Dogleg Rate (°/100ft)	Build Rate (°/100ft)	Formations / Comments
1,303.0	2.90	25.40	1,302.2	31.9	17.4	-31.9	0.33	-0.11	
1,395.0	3.00	20.40	1,394.1	36.2	19.3	-36.2	0.30	0.11	
1,486.0	3.20	16.00	1,485.0	40.9	20.8	-40.9	0.34	0.22	
1,578.0	3.20	11.50	1,576.8	45.9	22.0	-45.9	0.27	0.00	
1,669.0	2.90	10.10	1,667.7	50.6	22.9	-50.6	0.34	-0.33	
1,761.0	2.50	34.90	1,759.6	54.6	24.5	-54.6	1.33	-0.43	
1,853.0	2.70	31.30	1,851.5	58.1	26.8	-58.1	0.28	0.22	
1,945.0	2.80	26.70	1,943.4	61.9	28.9	-61.9	0.26	0.11	
2,037.0	2.70	23.40	2,035.3	65.9	30.8	-65.9	0.20	-0.11	
2,128.0	2.70	43.30	2,126.2	69.4	33.1	-69.4	1.02	0.00	
2,220.0	2.70	37.80	2,218.1	72.7	35.9	-72.7	0.28	0.00	
2,311.0	2.50	65.70	2,309.0	75.2	39.0	-75.2	1.39	-0.22	
2,403.0	2.40	60.60	2,400.9	77.0	42.5	-77.0	0.26	-0.11	
2,494.0	1.10	48.50	2,491.9	78.5	44.8	-78.5	1.48	-1.43	
2,586.0	1.10	36.70	2,583.9	79.8	46.0	-79.8	0.25	0.00	
2,678.0	1.00	27.30	2,675.9	81.2	46.9	-81.2	0.22	-0.11	
2,769.0	0.90	18.00	2,766.8	82.6	47.5	-82.6	0.20	-0.11	
2,861.0	1.00	2.00	2,858.8	84.1	47.8	-84.1	0.31	0.11	
2,953.0	1.00	342.90	2,950.8	85.7	47.6	-85.7	0.36	0.00	
3,045.0	1.10	328.30	3,042.8	87.2	46.9	-87.2	0.31	0.11	
3,139.0	0.90	308.80	3,136.8	88.4	45.8	-88.4	0.42	-0.21	
3,233.0	1.90	17.60	3,230.8	90.4	45.7	-90.4	1.90	1.06	
3,328.0	1.60	358.20	3,325.7	93.2	46.1	-93.2	0.69	-0.32	
3,423.0	1.80	17.50	3,420.7	96.0	46.5	-96.0	0.63	0.21	
3,517.0	2.50	41.60	3,514.6	98.9	48.4	-98.9	1.20	0.74	
3,612.0	2.00	33.50	3,609.5	101.8	50.6	-101.8	0.62	-0.53	
3,706.0	2.90	33.80	3,703.5	105.2	52.9	-105.2	0.96	0.96	
3,801.0	2.40	27.70	3,798.4	108.9	55.1	-108.9	0.60	-0.53	
3,896.0	4.50	31.80	3,893.2	113.9	58.0	-113.9	2.22	2.21	
3,990.0	3.90	31.30	3,986.9	119.7	61.6	-119.7	0.64	-0.64	
4,085.0	3.50	30.00	4,081.7	125.0	64.8	-125.0	0.43	-0.42	
4,179.0	3.20	24.80	4,175.6	129.9	67.3	-129.9	0.45	-0.32	
4,273.0	3.00	21.30	4,269.4	134.5	69.3	-134.5	0.29	-0.21	
4,368.0	2.80	21.80	4,364.3	139.0	71.0	-139.0	0.21	-0.21	
4,463.0	2.70	18.00	4,459.2	143.3	72.6	-143.3	0.22	-0.11	
4,557.0	2.70	13.90	4,553.1	147.6	73.8	-147.6	0.21	0.00	
4,652.0	3.60	39.80	4,648.0	152.0	76.3	-152.0	1.75	0.95	
4,747.0	3.50	38.80	4,742.8	156.6	80.0	-156.6	0.12	-0.11	
4,841.0	3.40	37.10	4,836.6	161.0	83.5	-161.0	0.15	-0.11	
4,936.0	3.30	31.70	4,931.4	165.6	86.6	-165.6	0.35	-0.11	
5,030.0	3.10	27.60	5,025.3	170.2	89.2	-170.2	0.32	-0.21	
5,125.0	2.90	19.10	5,120.2	174.7	91.2	-174.7	0.51	-0.21	
5,220.0	2.50	19.10	5,215.1	178.9	92.6	-178.9	0.42	-0.42	
5,315.0	2.40	15.10	5,310.0	182.8	93.8	-182.8	0.21	-0.11	
5,409.0	2.30	11.90	5,403.9	186.6	94.7	-186.6	0.18	-0.11	
5,504.0	2.00	6.70	5,498.8	190.1	95.3	-190.1	0.38	-0.32	
5,598.0	1.80	1.30	5,592.8	193.2	95.6	-193.2	0.29	-0.21	
5,693.0	0.70	315.50	5,687.8	195.1	95.2	-195.1	1.48	-1.16	
5,787.0	2.00	63.30	5,781.7	196.2	96.2	-196.2	2.46	1.38	
5,882.0	1.60	53.40	5,876.7	197.8	98.8	-197.8	0.53	-0.42	
5,976.0	1.40	32.90	5,970.7	199.5	100.5	-199.5	0.61	-0.21	
6,071.0	1.40	32.60	6,065.6	201.5	101.7	-201.5	0.01	0.00	
6,165.0	1.50	34.90	6,159.6	203.4	103.0	-203.4	0.12	0.11	
6,212.0	1.10	77.60	6,206.6	204.0	103.8	-204.0	2.16	-0.85	

Survey Report

Company:	EnCana Oil & Gas (USA) Inc	Local Co-ordinate Reference:	Well Grant Elmquist 2E-14H-C268
Project:	DJ Wattenberg	TVD Reference:	KB @ 4894.0ft
Site:	S14-T2N-R68W (Grant Elmquist/Salisbury/Hurt)	MD Reference:	KB @ 4894.0ft
Well:	Grant Elmquist 2E-14H-C268	North Reference:	True
Wellbore:	Hz	Survey Calculation Method:	Minimum Curvature
Design:	SURVEYS	Database:	USA EDM 5000 Multi Users DB

Survey									
Measured Depth (ft)	Inclination (°)	Azimuth (°)	Vertical Depth (ft)	+N/-S (ft)	+E/-W (ft)	Vertical Section (ft)	Dogleg Rate (°/100ft)	Build Rate (°/100ft)	Formations / Comments
6,260.0	3.40	152.40	6,254.6	202.9	105.0	-202.9	6.85	4.79	
6,307.0	5.70	160.50	6,301.4	199.4	106.4	-199.4	5.07	4.89	
6,355.0	6.80	170.60	6,349.1	194.4	107.6	-194.4	3.23	2.29	
6,402.0	8.80	171.60	6,395.7	188.1	108.6	-188.1	4.26	4.26	
6,449.0	10.30	164.20	6,442.0	180.5	110.3	-180.5	4.12	3.19	
6,496.0	12.90	167.50	6,488.1	171.3	112.6	-171.3	5.71	5.53	
6,544.0	14.70	171.70	6,534.7	160.1	114.6	-160.1	4.29	3.75	
6,591.0	16.70	173.90	6,579.9	147.4	116.2	-147.4	4.44	4.26	
6,639.0	19.30	176.60	6,625.6	132.7	117.4	-132.7	5.69	5.42	
6,686.0	22.60	180.70	6,669.5	115.9	117.7	-115.9	7.68	7.02	
6,733.0	25.80	181.90	6,712.3	96.6	117.3	-96.6	6.89	6.81	
6,780.0	30.50	182.80	6,753.8	74.5	116.4	-74.5	10.04	10.00	
6,828.0	33.90	183.30	6,794.4	48.9	115.0	-48.9	7.10	7.08	
6,875.0	36.10	180.50	6,832.9	22.0	114.1	-22.0	5.79	4.68	
6,922.0	37.20	179.10	6,870.6	-6.1	114.2	6.1	2.94	2.34	
6,969.0	38.20	180.30	6,907.8	-34.8	114.4	34.8	2.64	2.13	
7,017.0	41.20	183.00	6,944.7	-65.4	113.5	65.4	7.21	6.25	
7,064.0	46.80	182.40	6,978.5	-98.0	111.9	98.0	11.95	11.91	
7,111.0	50.60	179.90	7,009.5	-133.3	111.3	133.3	9.02	8.09	
7,158.0	52.60	178.90	7,038.7	-170.2	111.6	170.2	4.57	4.26	
7,206.0	54.00	179.20	7,067.4	-208.6	112.3	208.6	2.96	2.92	
7,253.0	57.00	177.50	7,094.0	-247.3	113.4	247.3	7.04	6.38	
7,301.0	61.20	178.00	7,118.7	-288.5	115.0	288.5	8.80	8.75	
7,348.0	63.30	178.90	7,140.5	-330.1	116.1	330.1	4.78	4.47	
7,395.0	64.80	178.90	7,161.1	-372.3	117.0	372.3	3.19	3.19	
7,442.0	68.80	179.20	7,179.6	-415.5	117.7	415.5	8.53	8.51	
7,490.0	74.80	182.70	7,194.6	-461.1	116.9	461.1	14.29	12.50	
7,537.0	79.30	183.30	7,205.1	-506.8	114.5	506.8	9.65	9.57	
7,570.0	84.80	185.10	7,209.7	-539.4	112.1	539.4	17.52	16.67	
7,651.0	86.90	185.40	7,215.6	-619.8	104.7	619.8	2.62	2.59	
7,742.0	87.40	183.50	7,220.1	-710.4	97.6	710.4	2.16	0.55	
7,834.0	89.00	181.60	7,223.0	-802.3	93.6	802.3	2.70	1.74	
7,926.0	90.70	179.50	7,223.2	-894.3	92.7	894.3	2.94	1.85	
8,018.0	90.60	178.60	7,222.2	-986.2	94.2	986.2	0.98	-0.11	
8,109.0	88.90	178.40	7,222.6	-1,077.2	96.6	1,077.2	1.88	-1.87	
8,201.0	89.20	178.60	7,224.1	-1,169.2	99.0	1,169.2	0.39	0.33	
8,293.0	87.60	178.40	7,226.7	-1,261.1	101.4	1,261.1	1.75	-1.74	
8,384.0	88.90	177.00	7,229.4	-1,352.0	105.0	1,352.0	2.10	1.43	
8,476.0	88.40	177.00	7,231.6	-1,443.8	109.9	1,443.8	0.54	-0.54	
8,567.0	89.40	178.90	7,233.4	-1,534.7	113.1	1,534.7	2.36	1.10	
8,656.0	88.60	178.60	7,234.9	-1,623.7	115.1	1,623.7	0.96	-0.90	
8,748.0	90.70	180.40	7,235.5	-1,715.7	115.9	1,715.7	3.01	2.28	
8,840.0	89.70	180.60	7,235.2	-1,807.7	115.1	1,807.7	1.11	-1.09	
8,932.0	88.50	181.00	7,236.6	-1,899.7	113.8	1,899.7	1.37	-1.30	
9,023.0	88.20	181.70	7,239.2	-1,990.6	111.6	1,990.6	0.84	-0.33	
9,115.0	89.00	181.10	7,241.5	-2,082.5	109.4	2,082.5	1.09	0.87	
9,207.0	88.90	181.40	7,243.2	-2,174.5	107.4	2,174.5	0.34	-0.11	
9,297.0	89.90	180.80	7,244.1	-2,264.5	105.6	2,264.5	1.30	1.11	
9,389.0	88.50	180.80	7,245.4	-2,356.5	104.4	2,356.5	1.52	-1.52	
9,481.0	90.60	180.60	7,246.1	-2,448.4	103.2	2,448.4	2.29	2.28	
9,573.0	92.70	179.70	7,243.5	-2,540.4	103.0	2,540.4	2.48	2.28	
9,634.0	95.00	178.80	7,239.4	-2,601.3	103.8	2,601.3	4.05	3.77	
9,665.0	97.20	178.10	7,236.1	-2,632.1	104.6	2,632.1	7.44	7.10	
9,696.0	97.80	177.90	7,232.0	-2,662.8	105.7	2,662.8	2.04	1.94	

Survey Report

Company: EnCana Oil & Gas (USA) Inc	Local Co-ordinate Reference: Well Grant Elmquist 2E-14H-C268
Project: DJ Wattenberg	TVD Reference: KB @ 4894.0ft
Site: S14-T2N-R68W (Grant Elmquist/Salisbury/Hurt)	MD Reference: KB @ 4894.0ft
Well: Grant Elmquist 2E-14H-C268	North Reference: True
Wellbore: Hz	Survey Calculation Method: Minimum Curvature
Design: SURVEYS	Database: USA EDM 5000 Multi Users DB

Survey									
Measured Depth (ft)	Inclination (°)	Azimuth (°)	Vertical Depth (ft)	+N/-S (ft)	+E/-W (ft)	Vertical Section (ft)	Dogleg Rate (°/100ft)	Build Rate (°/100ft)	Formations / Comments
9,727.0	97.50	177.90	7,227.9	-2,693.5	106.8	2,693.5	0.97	-0.97	
9,757.0	96.50	178.50	7,224.2	-2,723.2	107.8	2,723.2	3.88	-3.33	
9,804.0	93.90	180.50	7,220.0	-2,770.0	108.2	2,770.0	6.97	-5.53	
9,849.0	91.70	181.70	7,217.8	-2,815.0	107.3	2,815.0	5.57	-4.89	
9,896.0	90.00	182.30	7,217.1	-2,862.0	105.7	2,862.0	3.83	-3.62	
9,941.0	88.40	183.80	7,217.7	-2,906.9	103.3	2,906.9	4.87	-3.56	
10,035.0	89.50	186.00	7,219.4	-3,000.5	95.2	3,000.5	2.62	1.17	
10,082.0	89.40	186.30	7,219.9	-3,047.3	90.2	3,047.3	0.67	-0.21	
10,130.0	87.50	184.60	7,221.2	-3,095.0	85.7	3,095.0	5.31	-3.96	
10,177.0	87.30	183.90	7,223.3	-3,141.8	82.2	3,141.8	1.55	-0.43	
10,224.0	86.40	182.00	7,225.9	-3,188.7	79.8	3,188.7	4.47	-1.91	
10,271.0	86.20	181.20	7,228.9	-3,235.6	78.4	3,235.6	1.75	-0.43	
10,319.0	86.10	178.50	7,232.1	-3,283.5	78.6	3,283.5	5.62	-0.21	
10,366.0	86.00	178.20	7,235.4	-3,330.3	79.9	3,330.3	0.67	-0.21	
10,414.0	85.70	177.70	7,238.9	-3,378.2	81.6	3,378.2	1.21	-0.62	
10,508.0	86.50	177.80	7,245.3	-3,471.9	85.3	3,471.9	0.86	0.85	
10,603.0	87.40	178.60	7,250.3	-3,566.7	88.3	3,566.7	1.27	0.95	
10,697.0	87.00	177.20	7,254.9	-3,660.5	91.7	3,660.5	1.55	-0.43	
10,792.0	87.10	177.80	7,259.8	-3,755.3	95.9	3,755.3	0.64	0.11	
10,839.0	87.00	177.30	7,262.2	-3,802.2	97.9	3,802.2	1.08	-0.21	
10,887.0	88.80	177.40	7,264.0	-3,850.1	100.1	3,850.1	3.76	3.75	
10,981.0	91.20	178.90	7,264.0	-3,944.1	103.1	3,944.1	3.01	2.55	
11,076.0	90.70	181.20	7,262.4	-4,039.0	103.1	4,039.0	2.48	-0.53	
11,170.0	90.60	182.40	7,261.3	-4,133.0	100.1	4,133.0	1.28	-0.11	
11,265.0	90.10	181.50	7,260.7	-4,227.9	96.9	4,227.9	1.08	-0.53	
11,359.0	88.40	181.40	7,262.0	-4,321.9	94.5	4,321.9	1.81	-1.81	
11,454.0	90.10	180.50	7,263.2	-4,416.9	92.9	4,416.9	2.02	1.79	
11,548.0	89.80	181.10	7,263.3	-4,510.9	91.6	4,510.9	0.71	-0.32	
11,643.0	87.80	181.50	7,265.3	-4,605.8	89.4	4,605.8	2.15	-2.11	
11,737.0	89.00	181.00	7,267.9	-4,699.7	87.4	4,699.7	1.38	1.28	
11,832.0	88.90	181.10	7,269.7	-4,794.7	85.7	4,794.7	0.15	-0.11	
11,927.0	88.60	180.10	7,271.7	-4,889.7	84.7	4,889.7	1.10	-0.32	
12,021.0	89.70	179.70	7,273.1	-4,983.7	84.8	4,983.7	1.25	1.17	
12,115.0	88.60	179.80	7,274.5	-5,077.7	85.2	5,077.7	1.18	-1.17	
12,210.0	88.80	181.30	7,276.7	-5,172.6	84.3	5,172.6	1.59	0.21	
12,305.0	90.50	181.80	7,277.3	-5,267.6	81.8	5,267.6	1.87	1.79	
12,399.0	90.00	182.50	7,276.8	-5,361.5	78.2	5,361.5	0.92	-0.53	
12,494.0	91.30	181.40	7,275.8	-5,456.5	75.0	5,456.5	1.79	1.37	
12,589.0	91.10	180.80	7,273.8	-5,551.4	73.2	5,551.4	0.67	-0.21	
12,683.0	88.40	181.00	7,274.2	-5,645.4	71.7	5,645.4	2.88	-2.87	
12,778.0	88.20	179.30	7,277.0	-5,740.4	71.4	5,740.4	1.80	-0.21	
12,873.0	89.50	180.40	7,278.9	-5,835.3	71.7	5,835.3	1.79	1.37	
12,967.0	89.80	180.00	7,279.5	-5,929.3	71.4	5,929.3	0.53	0.32	
13,062.0	90.70	179.40	7,279.1	-6,024.3	71.9	6,024.3	1.14	0.95	
13,156.0	89.10	180.30	7,279.2	-6,118.3	72.1	6,118.3	1.95	-1.70	
13,251.0	89.30	181.70	7,280.6	-6,213.3	70.5	6,213.3	1.49	0.21	
13,345.0	88.30	181.00	7,282.5	-6,307.2	68.2	6,307.2	1.30	-1.06	
13,439.0	88.30	179.40	7,285.3	-6,401.2	67.9	6,401.2	1.70	0.00	
13,534.0	89.30	180.50	7,287.3	-6,496.2	68.0	6,496.2	1.56	1.05	
13,613.0	90.50	179.50	7,287.4	-6,575.2	68.0	6,575.2	1.98	1.52	Last CES Survey @ 13,613' MD
13,665.0	90.50	179.50	7,287.0	-6,627.1	68.4	6,627.1	0.00	0.00	PTB @ 13,665

Survey Report

Company: EnCana Oil & Gas (USA) Inc	Local Co-ordinate Reference: Well Grant Elmquist 2E-14H-C268
Project: DJ Wattenberg	TVD Reference: KB @ 4894.0ft
Site: S14-T2N-R68W (Grant Elmquist/Salisbury/Hurt)	MD Reference: KB @ 4894.0ft
Well: Grant Elmquist 2E-14H-C268	North Reference: True
Wellbore: Hz	Survey Calculation Method: Minimum Curvature
Design: SURVEYS	Database: USA EDM 5000 Multi Users DB

Targets									
Target Name	Dip Angle	Dip Dir.	TVD	+N/-S	+E/-W	Northing	Easting	Latitude	Longitude
- hit/miss target	(°)	(°)	(ft)	(ft)	(ft)	(ft)	(ft)		
- Shape									
Grant Elmquist 2E-14H-I - survey misses target center by 120.2ft at 13665.0ft MD (7287.0 TVD, -6627.1 N, 68.4 E) - Point	0.00	0.00	7,200.0	-6,710.0	64.3	1,288,981.29	3,147,229.39	40.125440	-104.973520
Grant Elmquist 2E TGT - survey misses target center by 8.7ft at 8581.2ft MD (7233.5 TVD, -1548.9 N, 113.4 E) - Point	0.00	0.00	7,241.2	-1,548.9	109.4	1,294,142.59	3,147,243.80	40.139608	-104.973359
Grant Elmquist 2E-14H-I - survey misses target center by 85.3ft at 13665.0ft MD (7287.0 TVD, -6627.1 N, 68.4 E) - Point	0.00	0.00	7,267.2	-6,710.0	64.3	1,288,981.29	3,147,229.39	40.125440	-104.973520
Grant Elmquist 2E-14H-I - survey misses target center by 4.6ft at 7111.3ft MD (7009.7 TVD, -133.5 N, 111.3 E) - Point	0.00	0.00	7,008.0	-134.8	115.4	1,295,556.71	3,147,241.45	40.143490	-104.973337

Survey Annotations				
Measured Depth	Vertical Depth	Local Coordinates		Comment
(ft)	(ft)	+N/-S (ft)	+E/-W (ft)	
13,613.0	7,287.4	-6,575.2	68.0	Last CES Survey @ 13,613' MD
13,665.0	7,287.0	-6,627.1	68.4	PTB @ 13,665

Checked By: _____	Approved By: _____	Date: _____
-------------------	--------------------	-------------