

Verdad Oil & Gas Corporation

Well Name: **Cervi 03N-63W-26-1N**

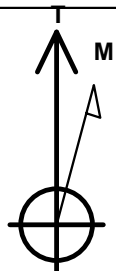
Surface Location: Cervi 03N-63W-26-1N Sec.26-T3N-R63W
North American Datum 1983 , US State Plane 1983 , Colorado Northern Zone
Ground Elevation: 4712.0

+N/-S	+E/-W	Northing	Easting	Latitude	Longitude	Slot
0.0	0.0	1313793.56	3307290.66	40.189528	-104.400050	

Ensign Rig #136 RKB - 12.5' WELL @ 4724.5ft (Ensign Rig #136 RKB - 12.5')

WELLBORE TARGET DETAILS

Name	TVD	+N/-S	+E/-W	Shape
600' Setback BHL	1.0	4551.6	-1300.0	Polygon
600' Setback SHL	1.0	440.0	-1300.0	Polygon
Sectionline	1.0	-160.0	-1300.0	Polygon
SHL 160'FSL & 1317'FEL	1.0	0.0	0.0	Point
BHL 600'FNL & 1815'FEL	6462.5	4551.6	-507.6	Point



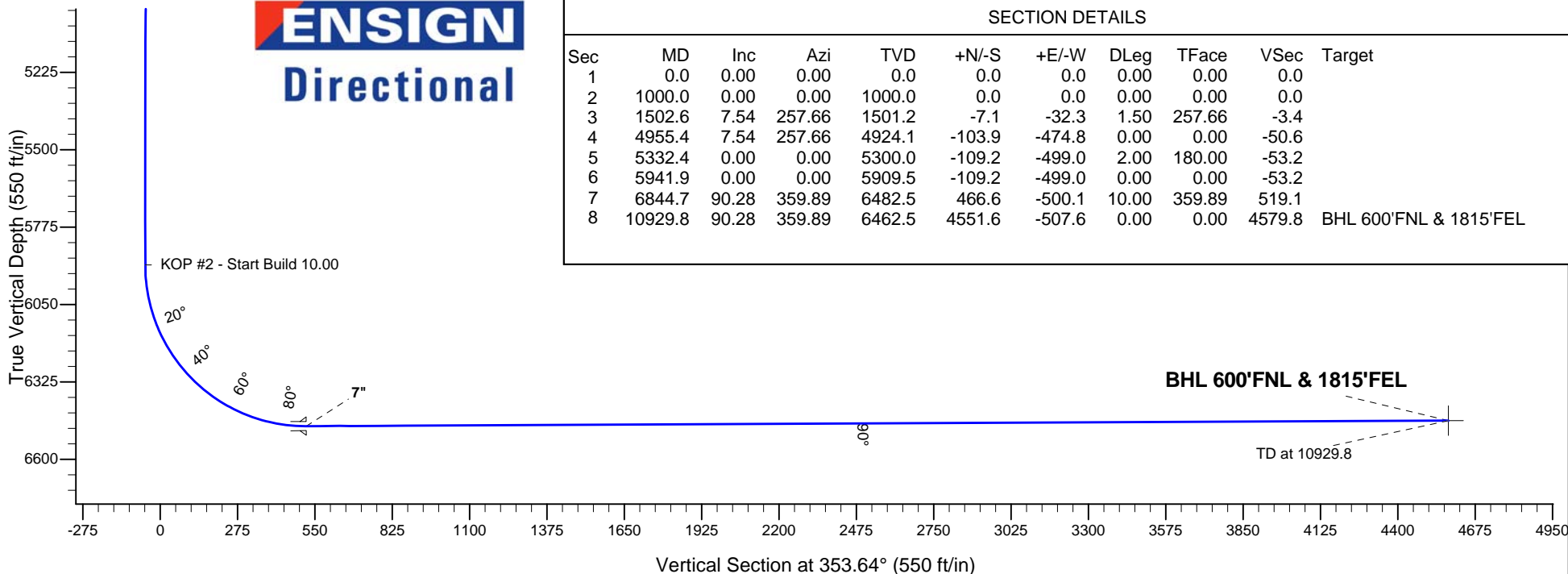
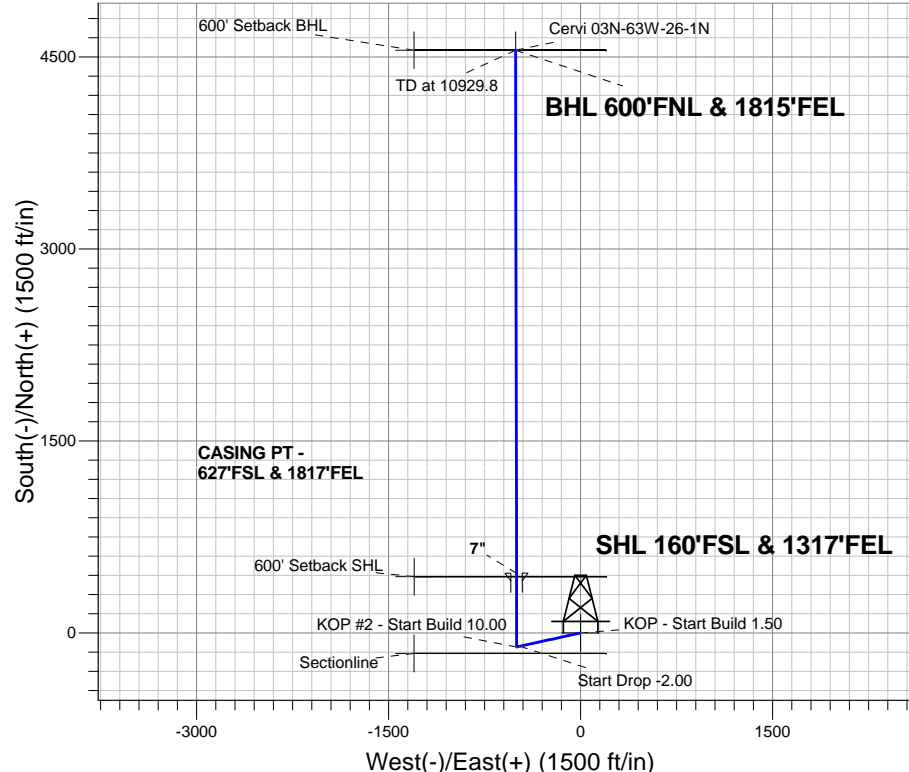
Azimuths to True North
Magnetic North: 8.17°

Magnetic Field
Strength: 52686.1snT
Dip Angle: 66.82°
Date: 12/31/2014
Model: IGRF2010

Cervi 03N-63W-26-1N Sec.26-T3N-R63W
Cervi 03N-63W-26-1N
Plan #2 (2-20-15)

ANNOTATIONS

TVD	MD	Annotation
1000.0	1000.0	KOP - Start Build 1.50
4924.1	4955.4	Start Drop -2.00
5909.5	5941.9	KOP #2 - Start Build 10.00
6462.5	10929.8	TD at 10929.8





Verdad Oil & Gas Corporation

SEC.26-T3N-R63W

Cervi 03N-63W-26-1N Sec.26-T3N-R63W

Cervi 03N-63W-26-1N

Wellbore #1

Plan: Plan #2 (2-20-15)

Standard Planning Report

20 February, 2015

Database:	landmark	Local Co-ordinate Reference:	Well Cervi 03N-63W-26-1N
Company:	Verdad Oil & Gas Corporation	TVD Reference:	WELL @ 4724.5ft (Ensign Rig #136 RKB - 12.5')
Project:	SEC.26-T3N-R63W	MD Reference:	WELL @ 4724.5ft (Ensign Rig #136 RKB - 12.5')
Site:	Cervi 03N-63W-26-1N Sec.26-T3N-R63W	North Reference:	True
Well:	Cervi 03N-63W-26-1N	Survey Calculation Method:	Minimum Curvature
Wellbore:	Wellbore #1		
Design:	Plan #2 (2-20-15)		

Project	SEC.26-T3N-R63W, Weld County, Colorado		
Map System:	US State Plane 1983	System Datum:	Mean Sea Level
Geo Datum:	North American Datum 1983		Using Well Reference Point
Map Zone:	Colorado Northern Zone		Using geodetic scale factor

Site		Cervi 03N-63W-26-1N Sec.26-T3N-R63W			
Site Position:		Northing:	1,313,793.58 ft	Latitude:	40.189528
From:	Lat/Long	Easting:	3,307,290.66 ft	Longitude:	-104.400050
Position Uncertainty:	0.0 ft	Slot Radius:	"	Grid Convergence:	0.71 °

Well	Cervi 03N-63W-26-1N					
Well Position	+N/-S	0.0 ft	Northing:	1,313,793.56 ft	Latitude:	40.189528
	+E/-W	0.0 ft	Easting:	3,307,290.66 ft	Longitude:	-104.400050
Position Uncertainty		0.0 ft	Wellhead Elevation:	ft	Ground Level:	4,712.0 ft

Wellbore	Wellbore #1				
Magnetics	Model Name	Sample Date	Declination (°)	Dip Angle (°)	Field Strength (nT)
	IGRF2010	12/31/2014	8.17	66.82	52,686

Design	Plan #2 (2-20-15)			
Audit Notes:				
Version:	Phase:	PROTOTYPE	Tie On Depth:	0.0
Vertical Section:	Depth From (TVD) (ft)	+N/-S (ft)	+E/-W (ft)	Direction (°)
	0.0	0.0	0.0	353.64

Plan Sections										
Measured Depth (ft)	Inclination (°)	Azimuth (°)	Vertical Depth (ft)	+N/-S (ft)	+E/-W (ft)	Dogleg Rate (°/100ft)	Build Rate (°/100ft)	Turn Rate (°/100ft)	TFO (°)	Target
0.0	0.00	0.00	0.0	0.0	0.0	0.00	0.00	0.00	0.00	
1,000.0	0.00	0.00	1,000.0	0.0	0.0	0.00	0.00	0.00	0.00	
1,502.6	7.54	257.66	1,501.2	-7.1	-32.3	1.50	1.50	0.00	257.66	
4,955.4	7.54	257.66	4,924.1	-103.9	-474.8	0.00	0.00	0.00	0.00	
5,332.4	0.00	0.00	5,300.0	-109.2	-499.0	2.00	-2.00	0.00	180.00	
5,941.9	0.00	0.00	5,909.5	-109.2	-499.0	0.00	0.00	0.00	0.00	
6,844.7	90.28	359.89	6,482.5	466.6	-500.1	10.00	10.00	0.00	359.89	
10,929.8	90.28	359.89	6,462.5	4,551.6	-507.6	0.00	0.00	0.00	0.00	BHL 600'FNL & 181

Database:	landmark	Local Co-ordinate Reference:	Well Cervi 03N-63W-26-1N
Company:	Verdad Oil & Gas Corporation	TVD Reference:	WELL @ 4724.5ft (Ensign Rig #136 RKB - 12.5')
Project:	SEC.26-T3N-R63W	MD Reference:	WELL @ 4724.5ft (Ensign Rig #136 RKB - 12.5')
Site:	Cervi 03N-63W-26-1N Sec.26-T3N-R63W	North Reference:	True
Well:	Cervi 03N-63W-26-1N	Survey Calculation Method:	Minimum Curvature
Wellbore:	Wellbore #1		
Design:	Plan #2 (2-20-15)		

Planned Survey									
Measured Depth (ft)	Inclination (°)	Azimuth (°)	Vertical Depth (ft)	+N/-S (ft)	+E/-W (ft)	Vertical Section (ft)	Dogleg Rate (°/100ft)	Build Rate (°/100ft)	Turn Rate (°/100ft)
0.0	0.00	0.00	0.0	0.0	0.0	0.0	0.00	0.00	0.00
100.0	0.00	0.00	100.0	0.0	0.0	0.0	0.00	0.00	0.00
200.0	0.00	0.00	200.0	0.0	0.0	0.0	0.00	0.00	0.00
300.0	0.00	0.00	300.0	0.0	0.0	0.0	0.00	0.00	0.00
400.0	0.00	0.00	400.0	0.0	0.0	0.0	0.00	0.00	0.00
500.0	0.00	0.00	500.0	0.0	0.0	0.0	0.00	0.00	0.00
600.0	0.00	0.00	600.0	0.0	0.0	0.0	0.00	0.00	0.00
700.0	0.00	0.00	700.0	0.0	0.0	0.0	0.00	0.00	0.00
800.0	0.00	0.00	800.0	0.0	0.0	0.0	0.00	0.00	0.00
900.0	0.00	0.00	900.0	0.0	0.0	0.0	0.00	0.00	0.00
1,000.0	0.00	0.00	1,000.0	0.0	0.0	0.0	0.00	0.00	0.00
KOP - Start Build 1.50									
1,100.0	1.50	257.66	1,100.0	-0.3	-1.3	-0.1	1.50	1.50	0.00
1,200.0	3.00	257.66	1,199.9	-1.1	-5.1	-0.5	1.50	1.50	0.00
1,300.0	4.50	257.66	1,299.7	-2.5	-11.5	-1.2	1.50	1.50	0.00
1,400.0	6.00	257.66	1,399.3	-4.5	-20.4	-2.2	1.50	1.50	0.00
1,500.0	7.50	257.66	1,498.6	-7.0	-31.9	-3.4	1.50	1.50	0.00
1,502.6	7.54	257.66	1,501.2	-7.1	-32.3	-3.4	1.50	1.50	0.00
1,600.0	7.54	257.66	1,597.7	-9.8	-44.7	-4.8	0.00	0.00	0.00
1,700.0	7.54	257.66	1,696.8	-12.6	-57.6	-6.1	0.00	0.00	0.00
1,800.0	7.54	257.66	1,796.0	-15.4	-70.4	-7.5	0.00	0.00	0.00
1,900.0	7.54	257.66	1,895.1	-18.2	-83.2	-8.9	0.00	0.00	0.00
2,000.0	7.54	257.66	1,994.3	-21.0	-96.0	-10.2	0.00	0.00	0.00
2,100.0	7.54	257.66	2,093.4	-23.8	-108.8	-11.6	0.00	0.00	0.00
2,200.0	7.54	257.66	2,192.5	-26.6	-121.6	-13.0	0.00	0.00	0.00
2,300.0	7.54	257.66	2,291.7	-29.4	-134.5	-14.3	0.00	0.00	0.00
2,400.0	7.54	257.66	2,390.8	-32.2	-147.3	-15.7	0.00	0.00	0.00
2,500.0	7.54	257.66	2,489.9	-35.0	-160.1	-17.1	0.00	0.00	0.00
2,600.0	7.54	257.66	2,589.1	-37.8	-172.9	-18.4	0.00	0.00	0.00
2,700.0	7.54	257.66	2,688.2	-40.6	-185.7	-19.8	0.00	0.00	0.00
2,800.0	7.54	257.66	2,787.3	-43.4	-198.5	-21.2	0.00	0.00	0.00
2,900.0	7.54	257.66	2,886.5	-46.3	-211.4	-22.5	0.00	0.00	0.00
3,000.0	7.54	257.66	2,985.6	-49.1	-224.2	-23.9	0.00	0.00	0.00
3,100.0	7.54	257.66	3,084.7	-51.9	-237.0	-25.3	0.00	0.00	0.00
3,200.0	7.54	257.66	3,183.9	-54.7	-249.8	-26.6	0.00	0.00	0.00
3,300.0	7.54	257.66	3,283.0	-57.5	-262.6	-28.0	0.00	0.00	0.00
3,400.0	7.54	257.66	3,382.1	-60.3	-275.4	-29.4	0.00	0.00	0.00
3,500.0	7.54	257.66	3,481.3	-63.1	-288.3	-30.7	0.00	0.00	0.00
3,600.0	7.54	257.66	3,580.4	-65.9	-301.1	-32.1	0.00	0.00	0.00
3,700.0	7.54	257.66	3,679.6	-68.7	-313.9	-33.5	0.00	0.00	0.00
3,800.0	7.54	257.66	3,778.7	-71.5	-326.7	-34.8	0.00	0.00	0.00
3,900.0	7.54	257.66	3,877.8	-74.3	-339.5	-36.2	0.00	0.00	0.00
4,000.0	7.54	257.66	3,977.0	-77.1	-352.3	-37.6	0.00	0.00	0.00
4,100.0	7.54	257.66	4,076.1	-79.9	-365.2	-39.0	0.00	0.00	0.00
4,200.0	7.54	257.66	4,175.2	-82.7	-378.0	-40.3	0.00	0.00	0.00
4,300.0	7.54	257.66	4,274.4	-85.5	-390.8	-41.7	0.00	0.00	0.00
4,400.0	7.54	257.66	4,373.5	-88.3	-403.6	-43.1	0.00	0.00	0.00
4,500.0	7.54	257.66	4,472.6	-91.1	-416.4	-44.4	0.00	0.00	0.00
4,600.0	7.54	257.66	4,571.8	-93.9	-429.3	-45.8	0.00	0.00	0.00
4,700.0	7.54	257.66	4,670.9	-96.7	-442.1	-47.2	0.00	0.00	0.00
4,800.0	7.54	257.66	4,770.0	-99.5	-454.9	-48.5	0.00	0.00	0.00
4,900.0	7.54	257.66	4,869.2	-102.4	-467.7	-49.9	0.00	0.00	0.00

Database:	landmark	Local Co-ordinate Reference:	Well Cervi 03N-63W-26-1N
Company:	Verdad Oil & Gas Corporation	TVD Reference:	WELL @ 4724.5ft (Ensign Rig #136 RKB - 12.5')
Project:	SEC.26-T3N-R63W	MD Reference:	WELL @ 4724.5ft (Ensign Rig #136 RKB - 12.5')
Site:	Cervi 03N-63W-26-1N Sec.26-T3N-R63W	North Reference:	True
Well:	Cervi 03N-63W-26-1N	Survey Calculation Method:	Minimum Curvature
Wellbore:	Wellbore #1		
Design:	Plan #2 (2-20-15)		

Planned Survey

Measured Depth (ft)	Inclination (°)	Azimuth (°)	Vertical Depth (ft)	+N/-S (ft)	+E/-W (ft)	Vertical Section (ft)	Dogleg Rate (°/100ft)	Build Rate (°/100ft)	Turn Rate (°/100ft)
4,955.4	7.54	257.66	4,924.1	-103.9	-474.8	-50.6	0.00	0.00	0.00
Start Drop -2.00									
5,000.0	6.65	257.66	4,968.4	-105.1	-480.2	-51.2	2.00	-2.00	0.00
5,100.0	4.65	257.66	5,067.9	-107.2	-489.8	-52.2	2.00	-2.00	0.00
5,200.0	2.65	257.66	5,167.7	-108.5	-496.0	-52.9	2.00	-2.00	0.00
5,300.0	0.65	257.66	5,267.6	-109.2	-498.8	-53.2	2.00	-2.00	0.00
5,332.4	0.00	0.00	5,300.0	-109.2	-499.0	-53.2	2.00	-2.00	0.00
5,400.0	0.00	0.00	5,367.6	-109.2	-499.0	-53.2	0.00	0.00	0.00
5,500.0	0.00	0.00	5,467.6	-109.2	-499.0	-53.2	0.00	0.00	0.00
5,600.0	0.00	0.00	5,567.6	-109.2	-499.0	-53.2	0.00	0.00	0.00
5,700.0	0.00	0.00	5,667.6	-109.2	-499.0	-53.2	0.00	0.00	0.00
5,800.0	0.00	0.00	5,767.6	-109.2	-499.0	-53.2	0.00	0.00	0.00
5,900.0	0.00	0.00	5,867.6	-109.2	-499.0	-53.2	0.00	0.00	0.00
5,941.9	0.00	0.00	5,909.5	-109.2	-499.0	-53.2	0.00	0.00	0.00
KOP #2 - Start Build 10.00									
6,000.0	5.81	359.89	5,967.5	-106.3	-499.0	-50.3	10.00	10.00	0.00
6,100.0	15.81	359.89	6,065.6	-87.5	-499.0	-31.7	10.00	10.00	0.00
6,200.0	25.81	359.89	6,159.0	-52.0	-499.1	3.6	10.00	10.00	0.00
6,300.0	35.81	359.89	6,244.8	-0.9	-499.2	54.4	10.00	10.00	0.00
6,400.0	45.81	359.89	6,320.3	64.4	-499.3	119.3	10.00	10.00	0.00
6,500.0	55.81	359.89	6,383.5	141.8	-499.5	196.3	10.00	10.00	0.00
6,600.0	65.81	359.89	6,432.2	229.0	-499.6	282.9	10.00	10.00	0.00
6,700.0	75.81	359.89	6,465.0	323.3	-499.8	376.7	10.00	10.00	0.00
6,800.0	85.81	359.89	6,480.9	421.9	-500.0	474.7	10.00	10.00	0.00
6,844.7	90.28	359.89	6,482.5	466.6	-500.1	519.1	10.00	10.00	0.00
7"									
6,900.0	90.28	359.89	6,482.2	521.9	-500.2	574.1	0.00	0.00	0.00
7,000.0	90.28	359.89	6,481.7	621.9	-500.3	673.5	0.00	0.00	0.00
7,100.0	90.28	359.89	6,481.2	721.9	-500.5	772.9	0.00	0.00	0.00
7,200.0	90.28	359.89	6,480.7	821.9	-500.7	872.3	0.00	0.00	0.00
7,300.0	90.28	359.89	6,480.2	921.9	-500.9	971.7	0.00	0.00	0.00
7,400.0	90.28	359.89	6,479.7	1,021.9	-501.1	1,071.1	0.00	0.00	0.00
7,500.0	90.28	359.89	6,479.3	1,121.9	-501.3	1,170.5	0.00	0.00	0.00
7,600.0	90.28	359.89	6,478.8	1,221.9	-501.4	1,269.9	0.00	0.00	0.00
7,700.0	90.28	359.89	6,478.3	1,321.8	-501.6	1,369.3	0.00	0.00	0.00
7,800.0	90.28	359.89	6,477.8	1,421.8	-501.8	1,468.7	0.00	0.00	0.00
7,900.0	90.28	359.89	6,477.3	1,521.8	-502.0	1,568.1	0.00	0.00	0.00
8,000.0	90.28	359.89	6,476.8	1,621.8	-502.2	1,667.5	0.00	0.00	0.00
8,100.0	90.28	359.89	6,476.3	1,721.8	-502.4	1,766.9	0.00	0.00	0.00
8,200.0	90.28	359.89	6,475.8	1,821.8	-502.5	1,866.3	0.00	0.00	0.00
8,300.0	90.28	359.89	6,475.4	1,921.8	-502.7	1,965.7	0.00	0.00	0.00
8,400.0	90.28	359.89	6,474.9	2,021.8	-502.9	2,065.1	0.00	0.00	0.00
8,500.0	90.28	359.89	6,474.4	2,121.8	-503.1	2,164.5	0.00	0.00	0.00
8,600.0	90.28	359.89	6,473.9	2,221.8	-503.3	2,263.9	0.00	0.00	0.00
8,700.0	90.28	359.89	6,473.4	2,321.8	-503.5	2,363.3	0.00	0.00	0.00
8,800.0	90.28	359.89	6,472.9	2,421.8	-503.6	2,462.7	0.00	0.00	0.00
8,900.0	90.28	359.89	6,472.4	2,521.8	-503.8	2,562.1	0.00	0.00	0.00
9,000.0	90.28	359.89	6,471.9	2,621.8	-504.0	2,661.5	0.00	0.00	0.00
9,100.0	90.28	359.89	6,471.4	2,721.8	-504.2	2,760.9	0.00	0.00	0.00
9,200.0	90.28	359.89	6,471.0	2,821.8	-504.4	2,860.3	0.00	0.00	0.00
9,300.0	90.28	359.89	6,470.5	2,921.8	-504.6	2,959.7	0.00	0.00	0.00
9,400.0	90.28	359.89	6,470.0	3,021.8	-504.7	3,059.1	0.00	0.00	0.00

Database:	landmark	Local Co-ordinate Reference:	Well Cervi 03N-63W-26-1N
Company:	Verdad Oil & Gas Corporation	TVD Reference:	WELL @ 4724.5ft (Ensign Rig #136 RKB - 12.5')
Project:	SEC.26-T3N-R63W	MD Reference:	WELL @ 4724.5ft (Ensign Rig #136 RKB - 12.5')
Site:	Cervi 03N-63W-26-1N Sec.26-T3N-R63W	North Reference:	True
Well:	Cervi 03N-63W-26-1N	Survey Calculation Method:	Minimum Curvature
Wellbore:	Wellbore #1		
Design:	Plan #2 (2-20-15)		

Planned Survey									
Measured Depth (ft)	Inclination (°)	Azimuth (°)	Vertical Depth (ft)	+N/-S (ft)	+E/-W (ft)	Vertical Section (ft)	Dogleg Rate (°/100ft)	Build Rate (°/100ft)	Turn Rate (°/100ft)
9,500.0	90.28	359.89	6,469.5	3,121.8	-504.9	3,158.6	0.00	0.00	0.00
9,600.0	90.28	359.89	6,469.0	3,221.8	-505.1	3,258.0	0.00	0.00	0.00
9,700.0	90.28	359.89	6,468.5	3,321.8	-505.3	3,357.4	0.00	0.00	0.00
9,800.0	90.28	359.89	6,468.0	3,421.8	-505.5	3,456.8	0.00	0.00	0.00
9,900.0	90.28	359.89	6,467.5	3,521.8	-505.7	3,556.2	0.00	0.00	0.00
10,000.0	90.28	359.89	6,467.0	3,621.8	-505.8	3,655.6	0.00	0.00	0.00
10,100.0	90.28	359.89	6,466.6	3,721.8	-506.0	3,755.0	0.00	0.00	0.00
10,200.0	90.28	359.89	6,466.1	3,821.8	-506.2	3,854.4	0.00	0.00	0.00
10,300.0	90.28	359.89	6,465.6	3,921.8	-506.4	3,953.8	0.00	0.00	0.00
10,400.0	90.28	359.89	6,465.1	4,021.8	-506.6	4,053.2	0.00	0.00	0.00
10,500.0	90.28	359.89	6,464.6	4,121.8	-506.8	4,152.6	0.00	0.00	0.00
10,600.0	90.28	359.89	6,464.1	4,221.8	-506.9	4,252.0	0.00	0.00	0.00
10,700.0	90.28	359.89	6,463.6	4,321.8	-507.1	4,351.4	0.00	0.00	0.00
10,800.0	90.28	359.89	6,463.1	4,421.8	-507.3	4,450.8	0.00	0.00	0.00
10,900.0	90.28	359.89	6,462.6	4,521.8	-507.5	4,550.2	0.00	0.00	0.00
10,929.8	90.28	359.89	6,462.5	4,551.6	-507.6	4,579.8	0.00	0.00	0.00

Targets									
Target Name	Dip Angle (°)	Dip Dir. (°)	TVD (ft)	+N/-S (ft)	+E/-W (ft)	Northing (ft)	Easting (ft)	Latitude	Longitude
600' Setback BHL	0.00	0.00	1.0	4,551.6	-1,300.0	1,318,328.48	3,305,934.36	40.202022	-104.404704
- plan misses by 4733.6ft at 1.0ft MD (1.0 TVD, 0.0 N, 0.0 E)									
- Polygon									
Point 1			1.0	0.0	0.0	1,318,328.48	3,305,934.36		
Point 2			1.0	0.0	1,500.0	1,318,347.09	3,307,434.18		
600' Setback SHL	0.00	0.00	1.0	440.0	-1,300.0	1,314,217.38	3,305,985.36	40.190736	-104.404703
- plan misses by 1372.4ft at 1.0ft MD (1.0 TVD, 0.0 N, 0.0 E)									
- Polygon									
Point 1			1.0	0.0	0.0	1,314,217.38	3,305,985.36		
Point 2			1.0	0.0	1,500.0	1,314,235.99	3,307,485.18		
SHL 160'FSL & 1317'I	0.00	0.00	1.0	0.0	0.0	1,313,793.58	3,307,290.66	40.189528	-104.400050
- plan hits target									
- Point									
BHL 600'FNL & 1815'	0.00	0.00	6,462.5	4,551.6	-507.6	1,318,338.29	3,306,726.71	40.202022	-104.401867
- plan hits target									
- Point									
Sectionline	0.00	0.00	1.0	-160.0	-1,300.0	1,313,617.46	3,305,992.80	40.189089	-104.404703
- plan misses by 1309.8ft at 1.0ft MD (1.0 TVD, 0.0 N, 0.0 E)									
- Polygon									
Point 1			1.0	0.0	0.0	1,313,617.46	3,305,992.80		
Point 2			1.0	0.0	1,500.0	1,313,636.06	3,307,492.62		

Database:	landmark	Local Co-ordinate Reference:	Well Cervi 03N-63W-26-1N
Company:	Verdad Oil & Gas Corporation	TVD Reference:	WELL @ 4724.5ft (Ensign Rig #136 RKB - 12.5')
Project:	SEC.26-T3N-R63W	MD Reference:	WELL @ 4724.5ft (Ensign Rig #136 RKB - 12.5')
Site:	Cervi 03N-63W-26-1N Sec.26-T3N-R63W	North Reference:	True
Well:	Cervi 03N-63W-26-1N	Survey Calculation Method:	Minimum Curvature
Wellbore:	Wellbore #1		
Design:	Plan #2 (2-20-15)		

Casing Points					
Measured Depth (ft)	Vertical Depth (ft)	Name	Casing Diameter (")	Hole Diameter (")	
6,844.7	6,482.5	7"	7	7-1/2	

Plan Annotations					
Measured Depth (ft)	Vertical Depth (ft)	Local Coordinates			
		+N/-S (ft)	+E/-W (ft)	Comment	
1,000.0	1,000.0	0.0	0.0	KOP - Start Build 1.50	
4,955.4	4,924.1	-7.1	-32.3	Start Drop -2.00	
5,941.9	5,909.5	-103.9	-474.8	KOP #2 - Start Build 10.00	
10,929.8	6,462.5	-109.2	-499.0	TD at 10929.8	