



Kerr-McGee Oil & Gas Onshore LP

A subsidiary of Anadarko Petroleum Corporation

1099 18th Street
Denver, CO 80202
720-929-6000

February 26, 2015

Matt Lepore
Director, Colorado Oil and Gas Conservation Commission
Department of Natural Resources
The Chancery Building
1120 Lincoln Street, Suite 801
Denver, CO 80203

Re: **30 Day Certification Letter - 318A.e**
FEHRN 38N-32HZ (COGCC DOC# 400799437)
Township 2 North, Range 66 West
Section 32: NENE
Unit Acreage: 480
Unit Spacing: 1N-66W-Sec. 4: NWNW; Sec. 5: NENE;
2N-66W-Sec. 28: SWSW; Sec. 29: SESE; Sec. 32: E2E2; Sec. 33: W2W2
Weld County, Colorado

Dear Director Lepore:

Kerr McGee Oil and Gas Onshore LP ("KMG") hereby certifies that KMG owns one hundred percent (100%) of the leasehold interest in the mineral rights in the proposed spacing unit. KMG hereby respectfully requests approval of this boundary well.

If you have any questions or issues regarding this permit, please contact Cheryl Light at (720) 929-6461.

Sincerely,

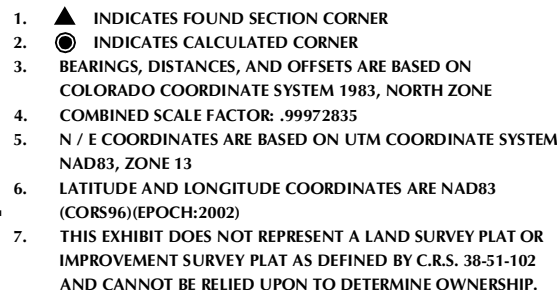
Kerr-McGee Oil and Gas Onshore LP

A blue ink signature of Craig Richardson, consisting of a stylized 'C' followed by a horizontal line.

Craig Richardson
Regulatory Analyst II

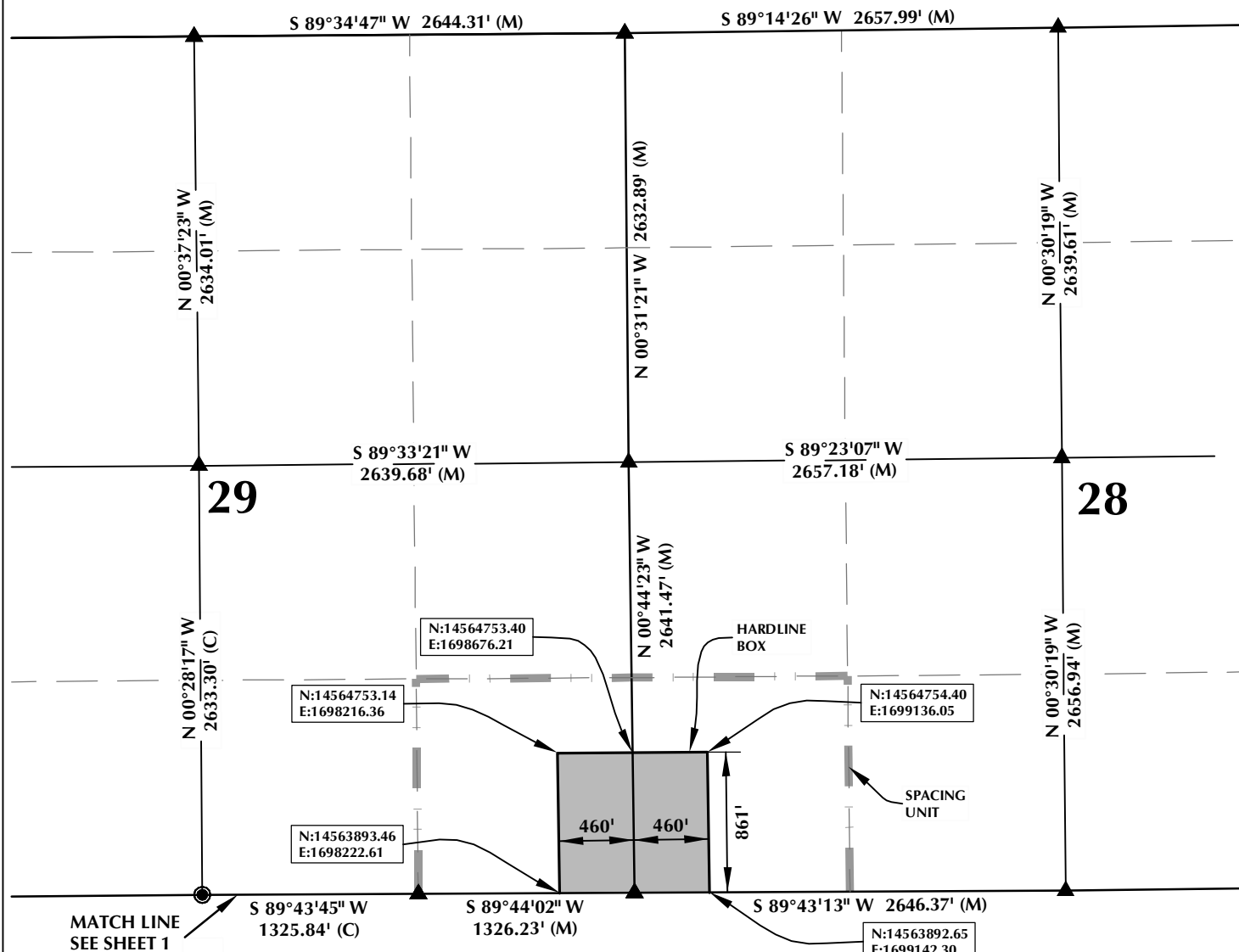
Enclosure

K:\ANADARKO\2014\2014 75 FEHRN SEC 32 T2N R66W\PLATS\HARDLINES\FEHRN 38N-32HZ HARDLINE.dwg, 1/15/2015 5:47:56 PM, lisa



DRAFTED BY: LMO	CHECKED BY: BJR	SHEET NO: 1 1 OF 3
DATE DRAFTED: 12/29/14	DATE SURVEYED: 10/4/14	
REVISED: 1/16/15	FILE NAME: 14-75	

SPACING UNIT: FEHRN 38N-32HZ T2N, R66W



HEEL LOCATION
N: 14,563,566.25'
E: 1,698,557.13'

LATITUDE= 40.100962°
LONGITUDE= -104.792087°

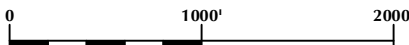
LATITUDE= 40°06'03.465"
LONGITUDE= -104°47'31.513"

AVAILABLE FOOTAGE
6962'

BOTTOM HOLE LOCATION
N: 14,558,661.39'
E: 1,698,558.30'

LATITUDE= 40.087493°
LONGITUDE= -104.792124°

LATITUDE= 40°05'14.975"
LONGITUDE= -104°47'31.645"



SCALE: 1" = 1000'

NOTES:

- ▲ INDICATES FOUND SECTION CORNER
- INDICATES CALCULATED CORNER
- BEARINGS, DISTANCES, AND OFFSETS ARE BASED ON COLORADO COORDINATE SYSTEM 1983, NORTH ZONE
- COMBINED SCALE FACTOR: .99972835
- N / E COORDINATES ARE BASED ON UTM COORDINATE SYSTEM NAD83, ZONE 13
- LATITUDE AND LONGITUDE COORDINATES ARE NAD83 (CORS96)(EPOCH:2002)
- THIS EXHIBIT DOES NOT REPRESENT A LAND SURVEY PLAT OR IMPROVEMENT SURVEY PLAT AS DEFINED BY C.R.S. 38-51-102 AND CANNOT BE RELIED UPON TO DETERMINE OWNERSHIP.

WELL PAD - FEHRN 16N-32HZ

FEHRN 38N-32HZ
SPACING UNIT EXHIBIT
327' FNL & 127' FEL NENE (HEEL)
50' FSL & 150' FEL SESE (BOTTOM)
LOCATED IN SECTION 32
T2N, R66W, 6TH P.M.
WELD COUNTY, COLORADO

**Kerr-McGee Oil &
Gas Onshore L.P.**
1099 18th Street
Denver, Colorado 80202



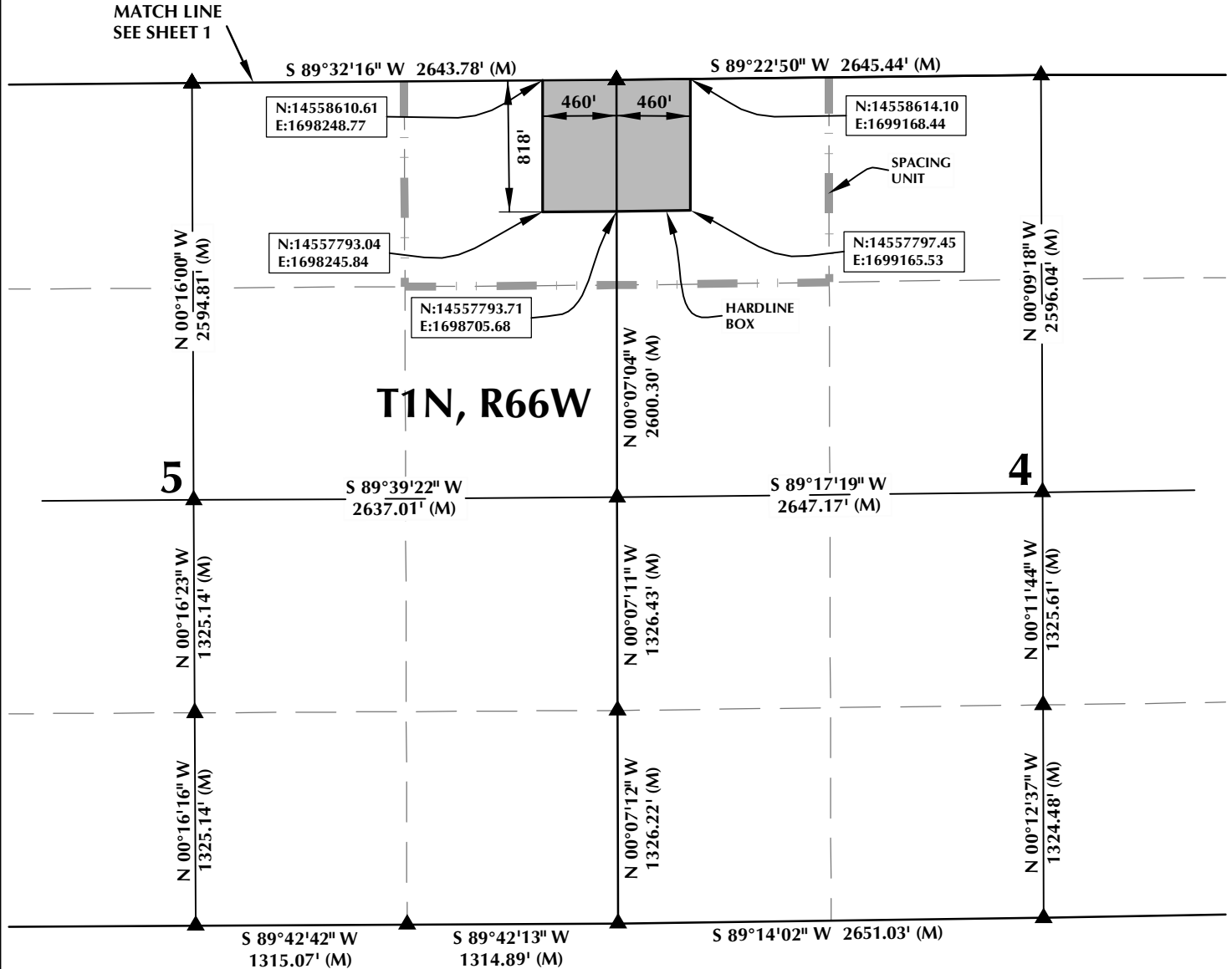
CONSULTING, LLC

SHERIDAN OFFICE
2155 North Main Street
Sheridan, Wyoming 82801
Phone 307-674-0609

LOVELAND OFFICE
1635 Foxtrail Drive, Suite 204
Loveland, Colorado 80538
Phone 970-776-4331

DRAFTED BY:	LMO	CHECKED BY:	BJR	SHEET NO:
DATE DRAFTED:	12/29/14	DATE SURVEYED:	10/4/14	2
REVISED:	1/16/15	FILE NAME:	14-75	2 OF 3

SPACING UNIT: FEHRN 38N-32HZ



HEEL LOCATION
N: 14,563,566.25'
E: 1,698,557.13'

LATITUDE= 40.100962°
LONGITUDE= -104.792087°

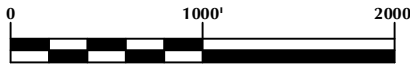
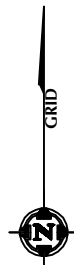
LATITUDE= 40°06'03.465"
LONGITUDE= -104°47'31.513"

AVAILABLE FOOTAGE
6962'

BOTTOM HOLE LOCATION
N: 14,558,661.39'
E: 1,698,558.30'

LATITUDE= 40.087493°
LONGITUDE= -104.792124°

LATITUDE= 40°05'14.975"
LONGITUDE= -104°47'31.645"



SCALE: 1" = 1000'

NOTES:

- ▲ INDICATES FOUND SECTION CORNER
- INDICATES CALCULATED CORNER
- BEARINGS, DISTANCES, AND OFFSETS ARE BASED ON COLORADO COORDINATE SYSTEM 1983, NORTH ZONE
- COMBINED SCALE FACTOR: .99972835
- N / E COORDINATES ARE BASED ON UTM COORDINATE SYSTEM NAD83, ZONE 13
- LATITUDE AND LONGITUDE COORDINATES ARE NAD83 (CORS96)(EPOCH:2002)
- THIS EXHIBIT DOES NOT REPRESENT A LAND SURVEY PLAT OR IMPROVEMENT SURVEY PLAT AS DEFINED BY C.R.S. 38-51-102 AND CANNOT BE RELIED UPON TO DETERMINE OWNERSHIP.

WELL PAD - FEHRN 16N-32HZ

FEHRN 38N-32HZ
SPACING UNIT EXHIBIT
327' FNL & 127' FEL NENE (HEEL)
50' FSL & 150' FEL SESE (BOTTOM)
LOCATED IN SECTION 32
T2N, R66W, 6TH P.M.
WELD COUNTY, COLORADO

**Kerr-McGee Oil &
Gas Onshore L.P.**
1099 18th Street
Denver, Colorado 80202



CONSULTING, LLC

SHERIDAN OFFICE
2155 North Main Street
Sheridan, Wyoming 82801
Phone 307-674-0609

LOVELAND OFFICE
1635 Foxtrail Drive, Suite 204
Loveland, Colorado 80538
Phone 970-776-4331

DRAFTED BY:	LMO	CHECKED BY:	BJR	SHEET NO:
DATE DRAFTED:	12/29/14	DATE SURVEYED:	10/4/14	3
REVISED:	1/16/15	FILE NAME:	14-75	3 OF 3