

24 February 2015

Colorado Oil and Gas Conservation
Commission
The Chancery Building
1120 Lincoln Street, Suite 801
Denver, CO 80203



410 17th Street, Suite 1500
Denver, CO 80202
(720) 440-6100 phone
(720) 279-2331 fax

Bonanzacrk.com

Attn: Matthew Lepore, Director

Re: Notice of 318A.a.(4).D Well Proposal
State Seventy Holes U-Y-6HC
SHL: NENE (350' FNL, 696' FEL) Sec 6-4N-62W, 6TH PM
Top of Production: NWNW (631' FNL, 5' FWL) Sec 5-4N-62W, 6TH PM
Bottom of Production: SWSW (470' FSL, 5' FWL) Sec 5-4N-62W, 6TH PM
Weld County, Colorado

Mr. Director:

Bonanza Creek Energy Operating Company, LLC. (Bonanza) intends to permit, drill and operate the referenced Codell Fm Horizontal Well. As defined by Colorado Oil and Gas Conservation Commission (COGCC) Rule 318A.a.(4)D., Bonanza proposes the following wellbore spacing unit:

E/2 E/2 Sec 6-T4N-R62W and W/2 W/2 Sec 5-T4N-R62W, Weld County, CO – containing 320 acres, more or less.

Bonanza is the sole mineral lease holder in the proposed spacing unit, and no mineral owner notifications were required.

Bonanza respectfully requests that you review the enclosed wellbore spacing unit documentation and approve the referenced APD.

Please do not hesitate to call or email me, directly, at (720) 440-6112 or KCaplan@BonanzaCRK.com, should you have any questions pertaining to this matter.

Thank you for your cooperation.

Sincerely,

BONANZA CREEK ENERGY OPERATING COMPANY, LLC.

A handwritten signature in blue ink that reads 'Keith S. Caplan'.

Keith S. Caplan
Senior Regulatory Specialist

enclosure

CORPORATE OFFICE

410 17th Street, Suite 1400

Denver, CO 80202

Office: (720)440-6100

MAGNOLIA OFFICE

50 Columbia 300

Magnolia, AR 71753

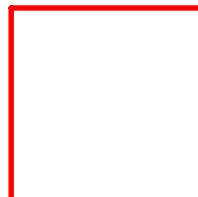
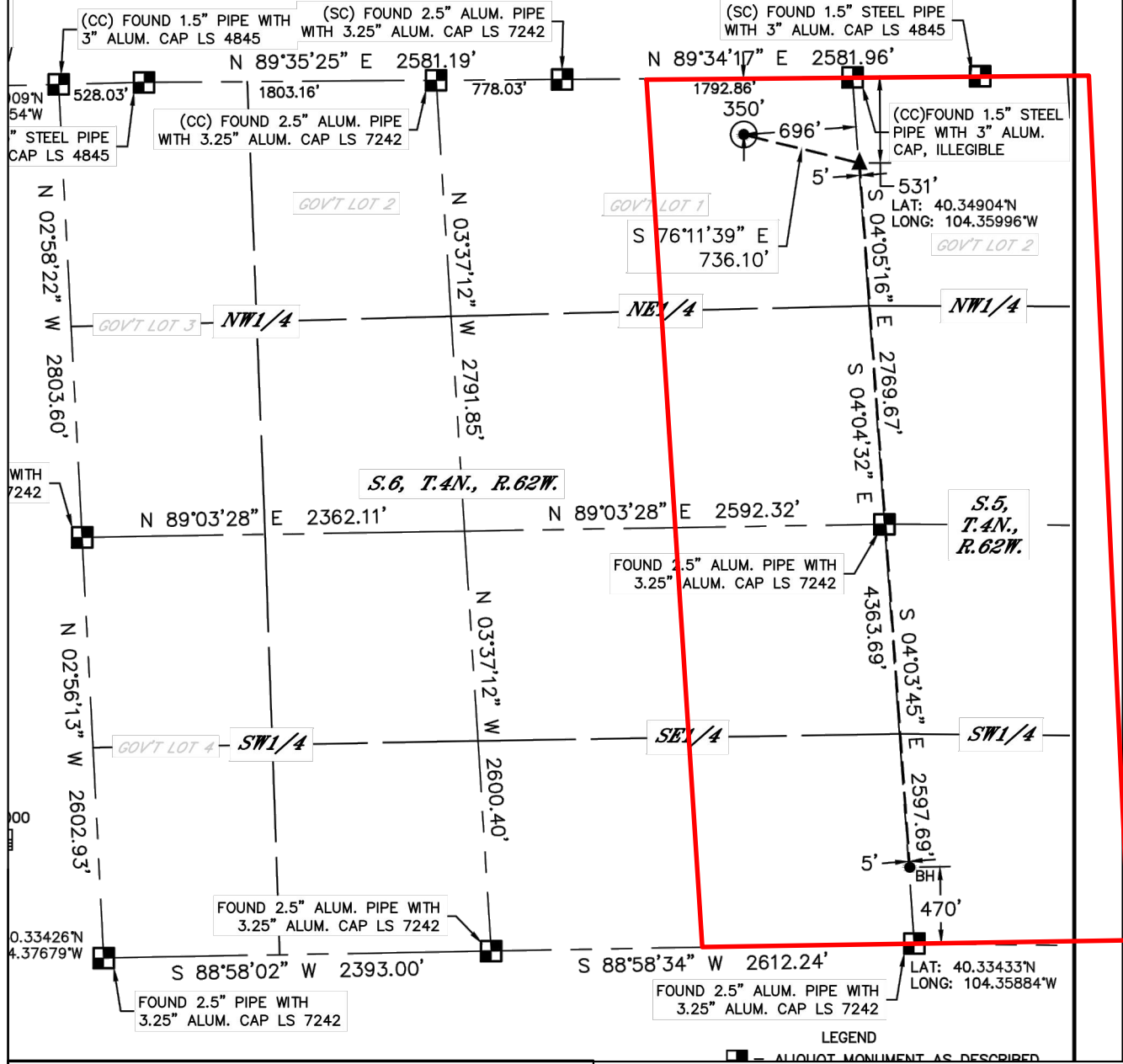
Office: (870) 235-0400

10°, Inc. 6250 W. 10th Street, Unit 2, Greeley, CO 970-515-5294

WELL LOCATION CERTIFICATE

STATE SEVENTY HOLES U-Y-6HC

SECTION: 6
TOWNSHIP: 4N
RANGE: 62W
6TH. P.M.
WELD COUNTY, CO



Wellbore Spacing Unit Outline



Wellbore Spacing Unit Map

08 January 20145 ksc

State Seventy Holes U-Y-6HC
E/2E/2 Sec 6-T4N-R62W 6th PM
W/2W/2 Sec 5-T4N-R62W 6th PM
Weld County, Colorado