

BONANZA CREEK ENERGY INC.

WELD COUNTY, COLORADO (NAD 83)

NE NE SEC. 6 T4N R62W 6th P.M.

STATE SEVENTY HOLES U-Y-6HC

ORIGINAL WELLBORE

21 December, 2014

Plan: PROPOSAL #1





Project: WELD COUNTY, COLORADO (NAD 83)
Site: NE NE SEC. 6 T4N R62W 6th P.M.
Well: STATE SEVENTY HOLES U-Y-6HC
Wellbore: ORIGINAL WELLBORE
Design: PROPOSAL #1

ANNOTATIONS

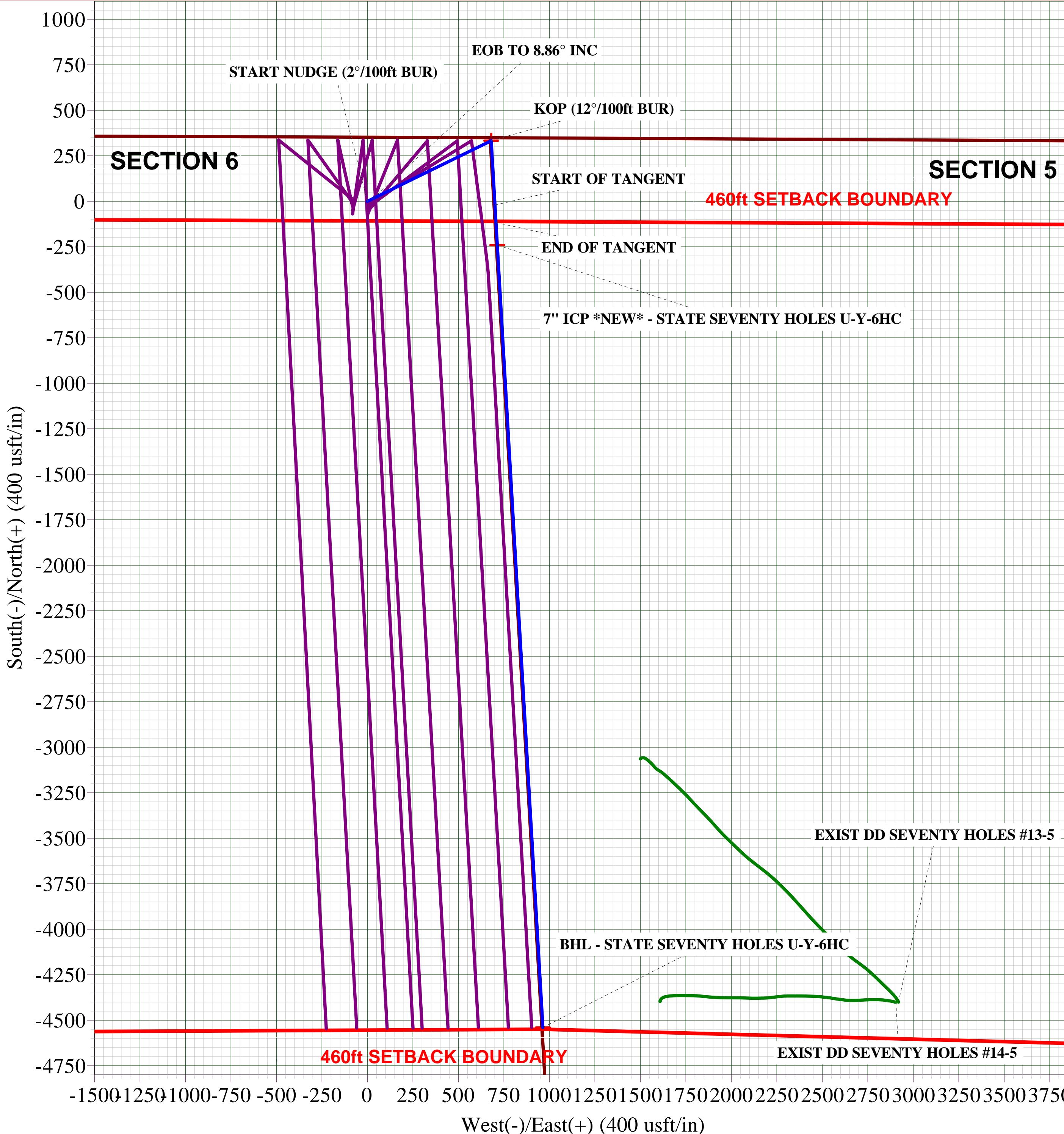
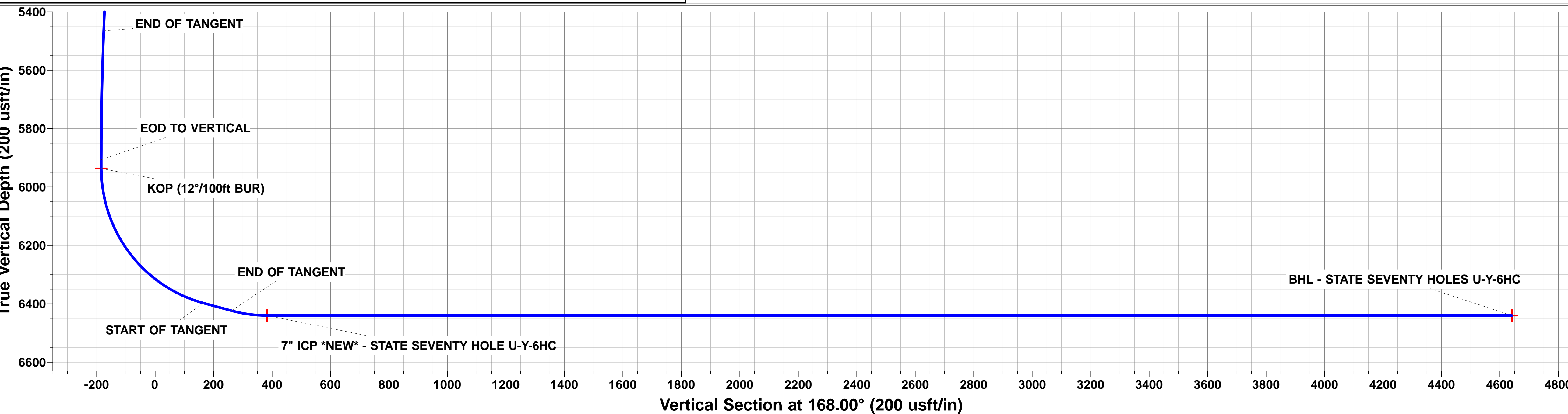
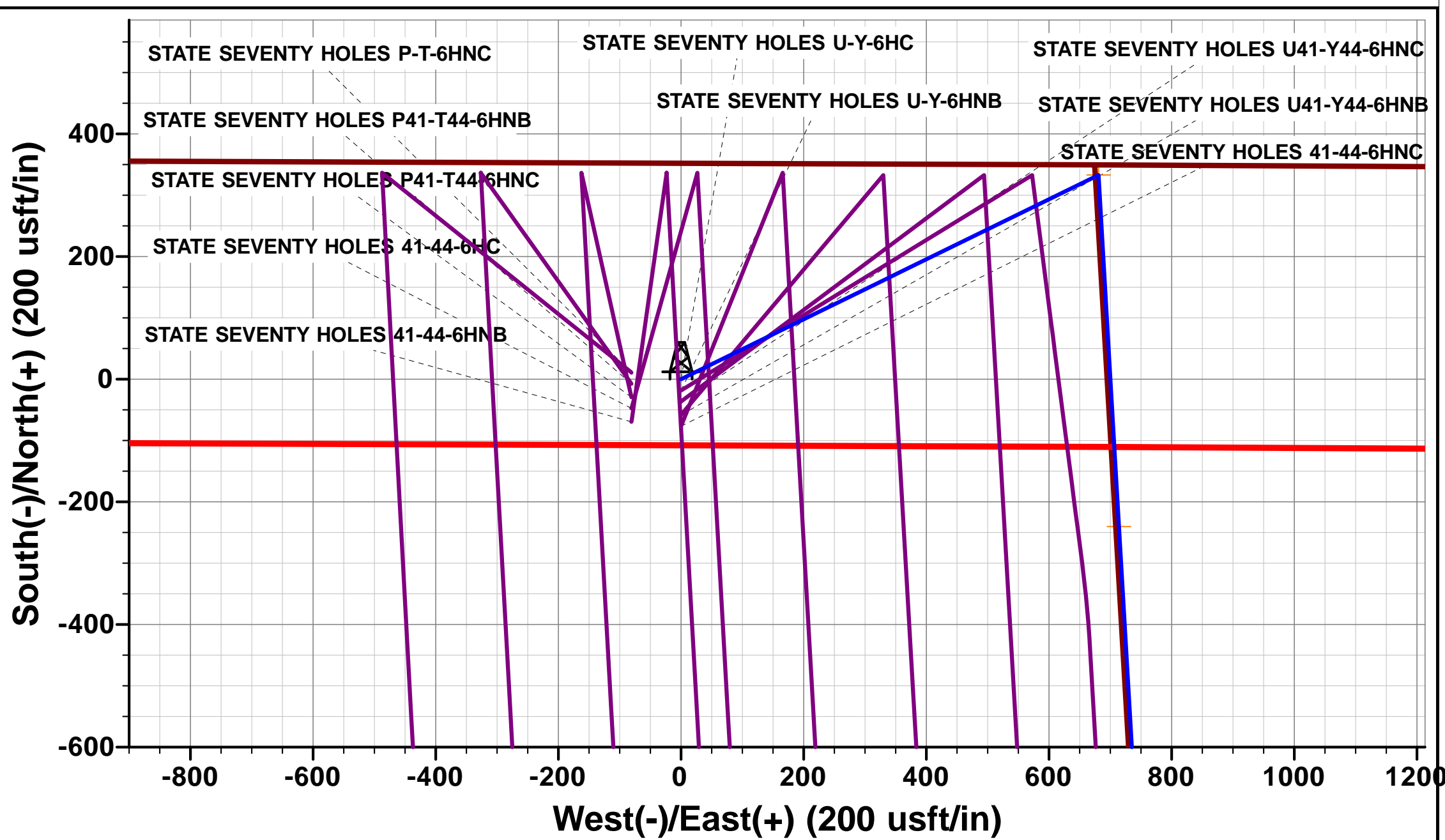
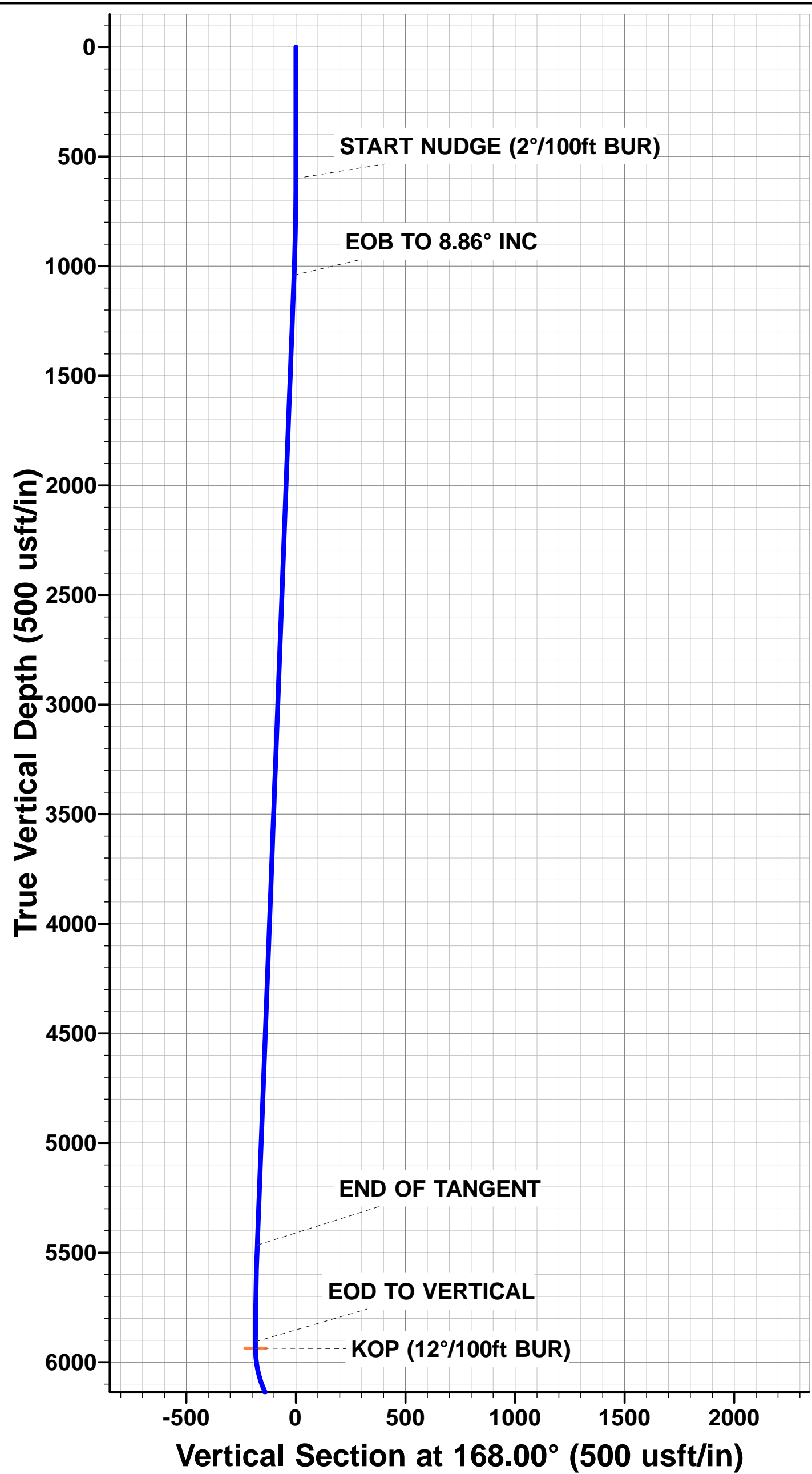
TVD	MD	Inc	Azi	+N/-S	+E/-W	VSect	Dep	Annotation
600.0	600.0	0.00	0.00	0.0	0.0	0.0	0.0	START NUDGE (2°/100ft BUR)
1041.1	1042.9	8.86	63.94	15.0	30.7	-8.3	34.2	EOB TO 8.86° INC
5465.6	5520.7	8.86	63.94	318.0	650.1	-175.9	723.7	END OF TANGENT
5906.7	5963.6	0.00	0.00	333.0	680.8	-184.2	757.9	EOD TO VERTICAL
5936.7	5993.6	0.00	0.00	333.0	680.8	-184.2	757.9	KOP (12°/100ft BUR)
6397.9	6618.6	75.00	176.67	-20.3	701.4	165.6	1111.8	START OF TANGENT
6423.8	6718.6	75.00	176.67	-116.7	707.0	261.1	1208.4	END OF TANGENT
6440.0	6843.6	90.00	176.67	-240.1	714.1	383.3	1331.9	7" ICP *NEW* - STATE SEVENTY HOLES U-Y-6HC
6440.0	11150.1	90.00	176.66	-4539.3	964.6	4640.6	5638.4	BHL - STATE SEVENTY HOLES U-Y-6HC

PROPOSED LOCAL COORDINATES:

SHL: 350ft FNL & 698ft FEL Sec 6
7" ICP *NEW*: 589ft FNL & 5ft FWL Sec 5
BHL: 470ft FSL & 5ft FWL Sec 5

WELLBORE TARGET DETAILS (LAT/LONG)

Name	TVD	+N/-S	+E/-W	Latitude	Longitude
KOP - STATE SEVENTY HOLES U-Y-6HC	5936.7	333.0	680.8	40.348994	-104.359938
7" ICP *NEW* - STATE SEVENTY HOLE U-Y-6HC	6440.0	-240.1	714.1	40.347421	-104.359818
BHL - STATE SEVENTY HOLES U-Y-6HC	6440.0	-4539.3	964.6	40.335620	-104.358920



Planning Report



Database:	EDM 5000.1 Single User Db	Local Co-ordinate Reference:	Well STATE SEVENTY HOLES U-Y-6HC
Company:	BONANZA CREEK ENERGY INC.	TVD Reference:	KB-EST @ 4560.0usft (Original Well Elev)
Project:	WELD COUNTY, COLORADO (NAD 83)	MD Reference:	KB-EST @ 4560.0usft (Original Well Elev)
Site:	NE NE SEC. 6 T4N R62W 6th P.M.	North Reference:	True
Well:	STATE SEVENTY HOLES U-Y-6HC	Survey Calculation Method:	Minimum Curvature
Wellbore:	ORIGINAL WELLBORE		
Design:	PROPOSAL #1		

Project	WELD COUNTY, COLORADO (NAD 83)		
Map System:	US State Plane 1983	System Datum:	Mean Sea Level
Geo Datum:	North American Datum 1983		
Map Zone:	Colorado Northern Zone		Using geodetic scale factor

Site	NE NE SEC. 6 T4N R62W 6th P.M.		
Site Position:		Northing:	1,371,680.11 usft
From:	Lat/Long	Easting:	3,317,072.91 usft
Position Uncertainty:	0.0 usft	Slot Radius:	1.10000ft
		Latitude:	40.348080
		Longitude:	-104.362380
		Grid Convergence:	0.74 °

Well	STATE SEVENTY HOLES U-Y-6HC		
Well Position	+N/-S	0.0 usft	Northing:
	+E/-W	0.0 usft	Easting:
Position Uncertainty	0.0 usft	Wellhead Elevation:	usft
		Latitude:	40.348080
		Longitude:	-104.362380
		Ground Level:	4,543.0 usft

Wellbore	ORIGINAL WELLBORE				
Magnetics	Model Name	Sample Date	Declination (°)	Dip Angle (°)	Field Strength (nT)
	IGRF2010	21/12/2014	8.17	66.95	52,777

Design	PROPOSAL #1			
Audit Notes:				
Version:	Phase:	PROTOTYPE	Tie On Depth:	0.0
Vertical Section:	Depth From (TVD) (usft)	+N/-S (usft)	+E/-W (usft)	Direction (°)
	6,440.0	0.0	0.0	168.00

Plan Sections											
MD (usft)	Inc (°)	Azi (°)	Vertical Depth	SS (usft)	+N/-S (usft)	+E/-W (usft)	Dogleg Rate (°/100usf)	Build Rate (°/100usf)	Turn Rate (°/100usf)	TFO (°)	Target
0.0	0.00	0.00	0.0	-4,560.0	0.0	0.0	0.00	0.00	0.00	0.00	
600.0	0.00	0.00	600.0	-3,960.0	0.0	0.0	0.00	0.00	0.00	0.00	
1,042.9	8.86	63.94	1,041.1	-3,518.9	15.0	30.7	2.00	2.00	0.00	63.94	
5,520.7	8.86	63.94	5,465.6	905.6	318.0	650.1	0.00	0.00	0.00	0.00	
5,963.6	0.00	0.00	5,906.7	1,346.7	333.0	680.8	2.00	-2.00	0.00	180.00	
5,993.6	0.00	0.00	5,936.7	1,376.7	333.0	680.8	0.00	0.00	0.00	0.00	KOP - STATE SEVI
6,618.6	75.00	176.67	6,397.9	1,837.9	-20.3	701.4	12.00	12.00	0.00	176.67	
6,718.6	75.00	176.67	6,423.8	1,863.8	-116.7	707.0	0.00	0.00	0.00	0.00	
6,843.6	90.00	176.67	6,440.0	1,880.0	-240.1	714.1	12.00	12.00	0.00	0.00	
11,150.1	90.00	176.66	6,440.0	1,880.0	-4,539.3	964.6	0.00	0.00	0.00	-81.39	BHL - STATE SEVI

Planning Report



Database:	EDM 5000.1 Single User Db	Local Co-ordinate Reference:	Well STATE SEVENTY HOLES U-Y-6HC
Company:	BONANZA CREEK ENERGY INC.	TVD Reference:	KB-EST @ 4560.0usft (Original Well Elev)
Project:	WELD COUNTY, COLORADO (NAD 83)	MD Reference:	KB-EST @ 4560.0usft (Original Well Elev)
Site:	NE NE SEC. 6 T4N R62W 6th P.M.	North Reference:	True
Well:	STATE SEVENTY HOLES U-Y-6HC	Survey Calculation Method:	Minimum Curvature
Wellbore:	ORIGINAL WELLBORE		
Design:	PROPOSAL #1		

Planned Survey										
MD (usft)	Inc (°)	Azi (°)	TVD (usft)	SS (usft)	+N/-S (usft)	+E/-W (usft)	Vertical Section (usft)	Dogleg Rate (°/100usft)	Build Rate (°/100usft)	Turn Rate (°/100usft)
0.0	0.00	0.00	0.0	4,560.00	0.0	0.0	0.0	0.00	0.00	0.00
100.0	0.00	0.00	100.0	4,460.00	0.0	0.0	0.0	0.00	0.00	0.00
200.0	0.00	0.00	200.0	4,360.00	0.0	0.0	0.0	0.00	0.00	0.00
300.0	0.00	0.00	300.0	4,260.00	0.0	0.0	0.0	0.00	0.00	0.00
400.0	0.00	0.00	400.0	4,160.00	0.0	0.0	0.0	0.00	0.00	0.00
500.0	0.00	0.00	500.0	4,060.00	0.0	0.0	0.0	0.00	0.00	0.00
START NUDGE (2°/100ft BUR)										
600.0	0.00	0.00	600.0	3,960.00	0.0	0.0	0.0	0.00	0.00	0.00
700.0	2.00	63.94	700.0	3,860.02	0.8	1.6	-0.4	2.00	2.00	0.00
800.0	4.00	63.94	799.8	3,760.16	3.1	6.3	-1.7	2.00	2.00	0.00
900.0	6.00	63.94	899.5	3,660.55	6.9	14.1	-3.8	2.00	2.00	0.00
1,000.0	8.00	63.94	998.7	3,561.30	12.3	25.0	-6.8	2.00	2.00	0.00
EOB TO 8.86° INC										
1,042.9	8.86	63.94	1,041.1	3,518.85	15.0	30.7	-8.3	2.00	2.00	0.00
1,100.0	8.86	63.94	1,097.6	3,462.44	18.9	38.6	-10.4	0.00	0.00	0.00
1,200.0	8.86	63.94	1,196.4	3,363.64	25.6	52.4	-14.2	0.00	0.00	0.00
1,300.0	8.86	63.94	1,295.2	3,264.83	32.4	66.3	-17.9	0.00	0.00	0.00
1,400.0	8.86	63.94	1,394.0	3,166.02	39.2	80.1	-21.7	0.00	0.00	0.00
1,500.0	8.86	63.94	1,492.8	3,067.21	45.9	93.9	-25.4	0.00	0.00	0.00
1,600.0	8.86	63.94	1,591.6	2,968.41	52.7	107.8	-29.2	0.00	0.00	0.00
1,700.0	8.86	63.94	1,690.4	2,869.60	59.5	121.6	-32.9	0.00	0.00	0.00
1,800.0	8.86	63.94	1,789.2	2,770.79	66.2	135.4	-36.6	0.00	0.00	0.00
1,900.0	8.86	63.94	1,888.0	2,671.99	73.0	149.3	-40.4	0.00	0.00	0.00
2,000.0	8.86	63.94	1,986.8	2,573.18	79.8	163.1	-44.1	0.00	0.00	0.00
2,100.0	8.86	63.94	2,085.6	2,474.37	86.5	176.9	-47.9	0.00	0.00	0.00
2,200.0	8.86	63.94	2,184.4	2,375.56	93.3	190.8	-51.6	0.00	0.00	0.00
2,300.0	8.86	63.94	2,283.2	2,276.76	100.1	204.6	-55.4	0.00	0.00	0.00
2,400.0	8.86	63.94	2,382.1	2,177.95	106.8	218.4	-59.1	0.00	0.00	0.00
2,500.0	8.86	63.94	2,480.9	2,079.14	113.6	232.3	-62.8	0.00	0.00	0.00
2,600.0	8.86	63.94	2,579.7	1,980.33	120.4	246.1	-66.6	0.00	0.00	0.00
2,700.0	8.86	63.94	2,678.5	1,881.53	127.1	259.9	-70.3	0.00	0.00	0.00
2,800.0	8.86	63.94	2,777.3	1,782.72	133.9	273.8	-74.1	0.00	0.00	0.00
2,900.0	8.86	63.94	2,876.1	1,683.91	140.7	287.6	-77.8	0.00	0.00	0.00
3,000.0	8.86	63.94	2,974.9	1,585.11	147.4	301.4	-81.6	0.00	0.00	0.00
3,100.0	8.86	63.94	3,073.7	1,486.30	154.2	315.2	-85.3	0.00	0.00	0.00
3,200.0	8.86	63.94	3,172.5	1,387.49	161.0	329.1	-89.0	0.00	0.00	0.00
3,300.0	8.86	63.94	3,271.3	1,288.68	167.7	342.9	-92.8	0.00	0.00	0.00
3,400.0	8.86	63.94	3,370.1	1,189.88	174.5	356.7	-96.5	0.00	0.00	0.00
3,500.0	8.86	63.94	3,468.9	1,091.07	181.3	370.6	-100.3	0.00	0.00	0.00
3,600.0	8.86	63.94	3,567.7	992.26	188.0	384.4	-104.0	0.00	0.00	0.00
3,700.0	8.86	63.94	3,666.5	893.45	194.8	398.2	-107.8	0.00	0.00	0.00
3,800.0	8.86	63.94	3,765.4	794.65	201.6	412.1	-111.5	0.00	0.00	0.00
3,900.0	8.86	63.94	3,864.2	695.84	208.3	425.9	-115.2	0.00	0.00	0.00
4,000.0	8.86	63.94	3,963.0	597.03	215.1	439.7	-119.0	0.00	0.00	0.00
4,100.0	8.86	63.94	4,061.8	498.23	221.9	453.6	-122.7	0.00	0.00	0.00
4,200.0	8.86	63.94	4,160.6	399.42	228.6	467.4	-126.5	0.00	0.00	0.00
4,300.0	8.86	63.94	4,259.4	300.61	235.4	481.2	-130.2	0.00	0.00	0.00
4,400.0	8.86	63.94	4,358.2	201.80	242.2	495.1	-134.0	0.00	0.00	0.00
4,500.0	8.86	63.94	4,457.0	103.00	248.9	508.9	-137.7	0.00	0.00	0.00
4,600.0	8.86	63.94	4,555.8	4.19	255.7	522.7	-141.4	0.00	0.00	0.00
4,700.0	8.86	63.94	4,654.6	-94.62	262.5	536.6	-145.2	0.00	0.00	0.00
4,800.0	8.86	63.94	4,753.4	-193.42	269.2	550.4	-148.9	0.00	0.00	0.00
4,900.0	8.86	63.94	4,852.2	-292.23	276.0	564.2	-152.7	0.00	0.00	0.00
5,000.0	8.86	63.94	4,951.0	-391.04	282.8	578.1	-156.4	0.00	0.00	0.00

Planning Report



Database:	EDM 5000.1 Single User Db	Local Co-ordinate Reference:	Well STATE SEVENTY HOLES U-Y-6HC
Company:	BONANZA CREEK ENERGY INC.	TVD Reference:	KB-EST @ 4560.0usft (Original Well Elev)
Project:	WELD COUNTY, COLORADO (NAD 83)	MD Reference:	KB-EST @ 4560.0usft (Original Well Elev)
Site:	NE NE SEC. 6 T4N R62W 6th P.M.	North Reference:	True
Well:	STATE SEVENTY HOLES U-Y-6HC	Survey Calculation Method:	Minimum Curvature
Wellbore:	ORIGINAL WELLBORE		
Design:	PROPOSAL #1		

Planned Survey

MD (usft)	Inc (°)	Azi (°)	TVD (usft)	SS (usft)	+N/-S (usft)	+E/-W (usft)	Vertical Section (usft)	Dogleg Rate (°/100usft)	Build Rate (°/100usft)	Turn Rate (°/100usft)
5,100.0	8.86	63.94	5,049.8	-489.85	289.5	591.9	-160.2	0.00	0.00	0.00
5,200.0	8.86	63.94	5,148.7	-588.65	296.3	605.7	-163.9	0.00	0.00	0.00
5,300.0	8.86	63.94	5,247.5	-687.46	303.1	619.6	-167.6	0.00	0.00	0.00
5,400.0	8.86	63.94	5,346.3	-786.27	309.8	633.4	-171.4	0.00	0.00	0.00
5,500.0	8.86	63.94	5,445.1	-885.08	316.6	647.2	-175.1	0.00	0.00	0.00
END OF TANGENT										
5,520.7	8.86	63.94	5,465.6	-905.55	318.0	650.1	-175.9	0.00	0.00	0.00
5,600.0	7.27	63.94	5,544.0	-984.04	322.9	660.1	-178.6	2.00	-2.00	0.00
5,700.0	5.27	63.94	5,643.4	-1,083.44	327.7	669.9	-181.3	2.00	-2.00	0.00
5,800.0	3.27	63.94	5,743.2	-1,183.15	330.9	676.6	-183.1	2.00	-2.00	0.00
5,900.0	1.27	63.94	5,843.1	-1,283.07	332.7	680.2	-184.0	2.00	-2.00	0.00
EOD TO VERTICAL										
5,963.6	0.00	0.00	5,906.7	-1,346.70	333.0	680.8	-184.2	2.00	-2.00	0.00
KOP (12°/100ft BUR)										
5,993.6	0.00	0.00	5,936.7	-1,376.70	333.0	680.8	-184.2	0.00	0.00	0.00
6,000.0	0.76	176.67	5,943.1	-1,383.07	333.0	680.8	-184.2	12.00	12.00	0.00
6,100.0	12.76	176.67	6,042.2	-1,482.19	321.2	681.5	-172.6	12.00	12.00	0.00
6,200.0	24.76	176.67	6,136.7	-1,576.70	289.2	683.4	-140.8	12.00	12.00	0.00
6,300.0	36.76	176.67	6,222.5	-1,662.47	238.2	686.3	-90.3	12.00	12.00	0.00
6,400.0	48.76	176.67	6,295.8	-1,735.75	170.5	690.3	-23.3	12.00	12.00	0.00
6,500.0	60.76	176.67	6,353.3	-1,793.34	89.1	695.0	57.3	12.00	12.00	0.00
6,600.0	72.76	176.67	6,392.7	-1,832.72	-2.4	700.3	147.9	12.00	12.00	0.00
START OF TANGENT										
6,618.6	75.00	176.67	6,397.9	-1,837.90	-20.3	701.4	165.6	12.00	12.00	0.00
6,700.0	75.00	176.67	6,419.0	-1,858.95	-98.8	705.9	243.3	0.00	0.00	0.00
END OF TANGENT										
6,718.6	75.00	176.67	6,423.8	-1,863.78	-116.7	707.0	261.1	0.00	0.00	0.00
6,800.0	84.76	176.67	6,438.1	-1,878.05	-196.6	711.6	340.2	12.00	12.00	0.00
7" ICP *NEW* - STATE SEVENTY HOLES U-Y-6HC										
6,843.6	90.00	176.67	6,440.0	-1,880.05	-240.1	714.1	383.3	12.00	12.00	0.00
6,900.0	90.00	176.67	6,440.0	-1,880.05	-296.4	717.4	439.0	0.00	0.00	0.00
7,000.0	90.00	176.67	6,440.0	-1,880.05	-396.2	723.2	537.9	0.00	0.00	0.00
7,100.0	90.00	176.67	6,440.0	-1,880.05	-496.0	729.0	636.7	0.00	0.00	0.00
7,200.0	90.00	176.67	6,440.0	-1,880.05	-595.9	734.8	735.6	0.00	0.00	0.00
7,300.0	90.00	176.67	6,440.0	-1,880.05	-695.7	740.7	834.4	0.00	0.00	0.00
7,400.0	90.00	176.67	6,440.0	-1,880.05	-795.5	746.5	933.3	0.00	0.00	0.00
7,500.0	90.00	176.67	6,440.0	-1,880.05	-895.3	752.3	1,032.2	0.00	0.00	0.00
7,600.0	90.00	176.67	6,440.0	-1,880.05	-995.2	758.1	1,131.0	0.00	0.00	0.00
7,700.0	90.00	176.67	6,440.0	-1,880.04	-1,095.0	763.9	1,229.9	0.00	0.00	0.00
7,800.0	90.00	176.67	6,440.0	-1,880.04	-1,194.8	769.7	1,328.7	0.00	0.00	0.00
7,900.0	90.00	176.67	6,440.0	-1,880.04	-1,294.7	775.5	1,427.6	0.00	0.00	0.00
8,000.0	90.00	176.67	6,440.0	-1,880.04	-1,394.5	781.3	1,526.5	0.00	0.00	0.00
8,100.0	90.00	176.67	6,440.0	-1,880.04	-1,494.3	787.1	1,625.3	0.00	0.00	0.00
8,200.0	90.00	176.67	6,440.0	-1,880.04	-1,594.2	793.0	1,724.2	0.00	0.00	0.00
8,300.0	90.00	176.67	6,440.0	-1,880.04	-1,694.0	798.8	1,823.0	0.00	0.00	0.00
8,400.0	90.00	176.67	6,440.0	-1,880.04	-1,793.8	804.6	1,921.9	0.00	0.00	0.00
8,500.0	90.00	176.67	6,440.0	-1,880.04	-1,893.7	810.4	2,020.7	0.00	0.00	0.00
8,600.0	90.00	176.67	6,440.0	-1,880.04	-1,993.5	816.2	2,119.6	0.00	0.00	0.00
8,700.0	90.00	176.67	6,440.0	-1,880.04	-2,093.3	822.0	2,218.5	0.00	0.00	0.00
8,800.0	90.00	176.67	6,440.0	-1,880.04	-2,193.1	827.8	2,317.3	0.00	0.00	0.00
8,900.0	90.00	176.67	6,440.0	-1,880.04	-2,293.0	833.7	2,416.2	0.00	0.00	0.00
9,000.0	90.00	176.67	6,440.0	-1,880.04	-2,392.8	839.5	2,515.0	0.00	0.00	0.00
9,100.0	90.00	176.67	6,440.0	-1,880.03	-2,492.6	845.3	2,613.9	0.00	0.00	0.00

Planning Report



Database:	EDM 5000.1 Single User Db	Local Co-ordinate Reference:	Well STATE SEVENTY HOLES U-Y-6HC
Company:	BONANZA CREEK ENERGY INC.	TVD Reference:	KB-EST @ 4560.0usft (Original Well Elev)
Project:	WELD COUNTY, COLORADO (NAD 83)	MD Reference:	KB-EST @ 4560.0usft (Original Well Elev)
Site:	NE NE SEC. 6 T4N R62W 6th P.M.	North Reference:	True
Well:	STATE SEVENTY HOLES U-Y-6HC	Survey Calculation Method:	Minimum Curvature
Wellbore:	ORIGINAL WELLBORE		
Design:	PROPOSAL #1		

Planned Survey										
MD (usft)	Inc (°)	Azi (°)	TVD (usft)	SS (usft)	+N/-S (usft)	+E/-W (usft)	Vertical Section (usft)	Dogleg Rate (°/100usft)	Build Rate (°/100usft)	Turn Rate (°/100usft)
9,200.0	90.00	176.67	6,440.0	-1,880.03	-2,592.5	851.1	2,712.8	0.00	0.00	0.00
9,300.0	90.00	176.67	6,440.0	-1,880.03	-2,692.3	856.9	2,811.6	0.00	0.00	0.00
9,400.0	90.00	176.67	6,440.0	-1,880.03	-2,792.1	862.7	2,910.5	0.00	0.00	0.00
9,500.0	90.00	176.66	6,440.0	-1,880.03	-2,892.0	868.6	3,009.3	0.00	0.00	0.00
9,600.0	90.00	176.66	6,440.0	-1,880.03	-2,991.8	874.4	3,108.2	0.00	0.00	0.00
9,700.0	90.00	176.66	6,440.0	-1,880.03	-3,091.6	880.2	3,207.1	0.00	0.00	0.00
9,800.0	90.00	176.66	6,440.0	-1,880.02	-3,191.5	886.0	3,305.9	0.00	0.00	0.00
9,900.0	90.00	176.66	6,440.0	-1,880.02	-3,291.3	891.8	3,404.8	0.00	0.00	0.00
10,000.0	90.00	176.66	6,440.0	-1,880.02	-3,391.1	897.7	3,503.6	0.00	0.00	0.00
10,100.0	90.00	176.66	6,440.0	-1,880.02	-3,490.9	903.5	3,602.5	0.00	0.00	0.00
10,200.0	90.00	176.66	6,440.0	-1,880.02	-3,590.8	909.3	3,701.4	0.00	0.00	0.00
10,300.0	90.00	176.66	6,440.0	-1,880.02	-3,690.6	915.1	3,800.2	0.00	0.00	0.00
10,400.0	90.00	176.66	6,440.0	-1,880.01	-3,790.4	920.9	3,899.1	0.00	0.00	0.00
10,500.0	90.00	176.66	6,440.0	-1,880.01	-3,890.3	926.8	3,997.9	0.00	0.00	0.00
10,600.0	90.00	176.66	6,440.0	-1,880.01	-3,990.1	932.6	4,096.8	0.00	0.00	0.00
10,700.0	90.00	176.66	6,440.0	-1,880.01	-4,089.9	938.4	4,195.7	0.00	0.00	0.00
10,800.0	90.00	176.66	6,440.0	-1,880.01	-4,189.8	944.2	4,294.5	0.00	0.00	0.00
10,900.0	90.00	176.66	6,440.0	-1,880.01	-4,289.6	950.0	4,393.4	0.00	0.00	0.00
11,000.0	90.00	176.66	6,440.0	-1,880.00	-4,389.4	955.9	4,492.2	0.00	0.00	0.00
11,100.0	90.00	176.66	6,440.0	-1,880.00	-4,489.2	961.7	4,591.1	0.00	0.00	0.00
BHL - STATE SEVENTY HOLES U-Y-6HC										
11,150.1	90.00	176.66	6,440.0	-1,880.00	-4,539.3	964.6	4,640.6	0.00	0.00	0.00

Plan Annotations				
MD (usft)	TVD (usft)	Local Coordinates		Comment
		+N/-S (usft)	+E/-W (usft)	
600.0	600.0	0.0	0.0	START NUDGE (2°/100ft BUR)
1,042.9	1,041.1	15.0	30.7	EOB TO 8.86° INC
5,520.7	5,465.6	318.0	650.1	END OF TANGENT
5,963.6	5,906.7	333.0	680.8	EOD TO VERTICAL
5,993.6	5,936.7	333.0	680.8	KOP (12°/100ft BUR)
6,618.6	6,397.9	-20.3	701.4	START OF TANGENT
6,718.6	6,423.8	-116.7	707.0	END OF TANGENT
6,843.6	6,440.0	-240.1	714.1	7" ICP *NEW* - STATE SEVENTY HOLES U-Y-6HC
11,150.1	6,440.0	-4,539.3	964.6	BHL - STATE SEVENTY HOLES U-Y-6HC