

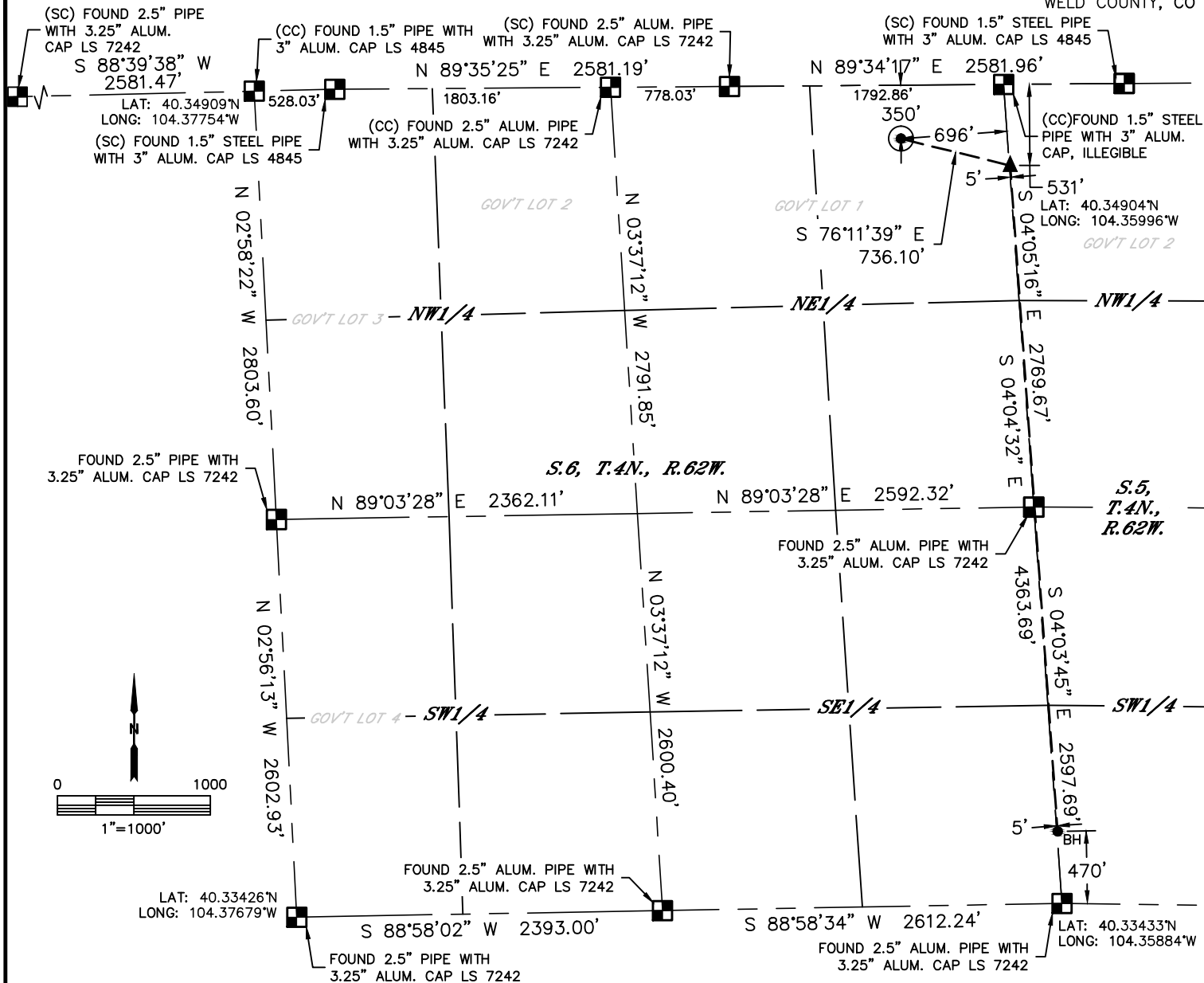


Lat40°, Inc. 6250 W. 10th Street, Unit 2, Greeley, CO 970-515-5294

# WELL LOCATION CERTIFICATE

STATE SEVENTY HOLES U-Y-6HC

SECTION: 6  
TOWNSHIP: 4N  
RANGE: 62W  
6TH. P.M.  
WELD COUNTY, CO



CLIENT: BONANZA CREEK ENERGY				LANDMAN: STEVE MCPHERSON		
INSTRUMENT OPERATOR: ADAM BEAUPREZ				SURVEY DATE: 11/17/2014		
SURFACE USE: RANGELAND						
SHL FOOTAGE	SHL LAT°	SHL LONG°	SHL PDOP	SHL ELEV	SHL 1/4/1/4	SHL S-T-R
350 FNL 696 FEL	40.34808	-104.36238	1.6	4543	NENE	6-4-62

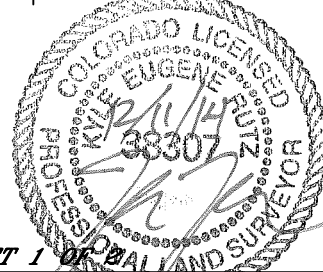
BHL FOOTAGE	BHL LAT°	BHL LONG°	BHL S-T-R	EP LAT°	EP LONG°	EP S-T-R
470 FSL 5 FWL	40.33562	-104.35892	5-4-62	40.34758	-104.35983	5-4-62

## NOTE:

- 1) Bearings shown are Grid Bearings of the Colorado State Plane Coordinate System, North Zone, North American Datum 1983. The lineal dimensions as contained herein are based upon the "U.S. Survey Foot."
- 2) Distances to section lines measured at 90 degrees from said section lines.
- 3) Ground elevations are based on an observed GPS elevation (NAVD 1988 DATUM).
- 4) Latitude and Longitude shown are (NAD 83 DATUM).
- 5) IMPROVEMENTS: See LOCATION DRAWING for all visible improvements within 500' of disturbed area.
- 6) This map does not represent a boundary survey.

NEAREST CULTURAL ITEMS	
BUILDING	+5280'
BUILDING UNIT	+5280'
HIGH OCCUPANCY BUILDING UNIT	+5280'
DESIGNATED OUTSIDE ACTIVITY AREA	+5280'
PUBLIC ROAD	+5280'
ABOVE GROUND UTILITY	±2618'SW
RAILROAD	+5280'
PROPERTY LINE	±350'N

- LEGEND
- = ALIQUOT MONUMENT AS DESCRIBED
  - = CALCULATED POSITION
  - = SURFACE HOLE LOCATION (SHL)
  - ▲ = ENTRY POINT LOCATION (EP)
  - BH = BOTTOM HOLE LOCATION (BHL)
  - ⊕ = EXISTING WELL
  - ⊖ = ABANDONED WELL



**SHEET 1**  
Kyle E. Rutz On Behalf of Lat40°, Inc.  
Colorado Licensed Professional Land Surveyor No. 38307  
DATE: 12/19/2014  
PROJECT#: 2014214

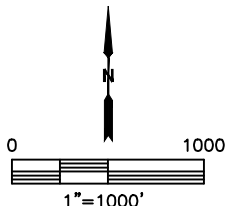
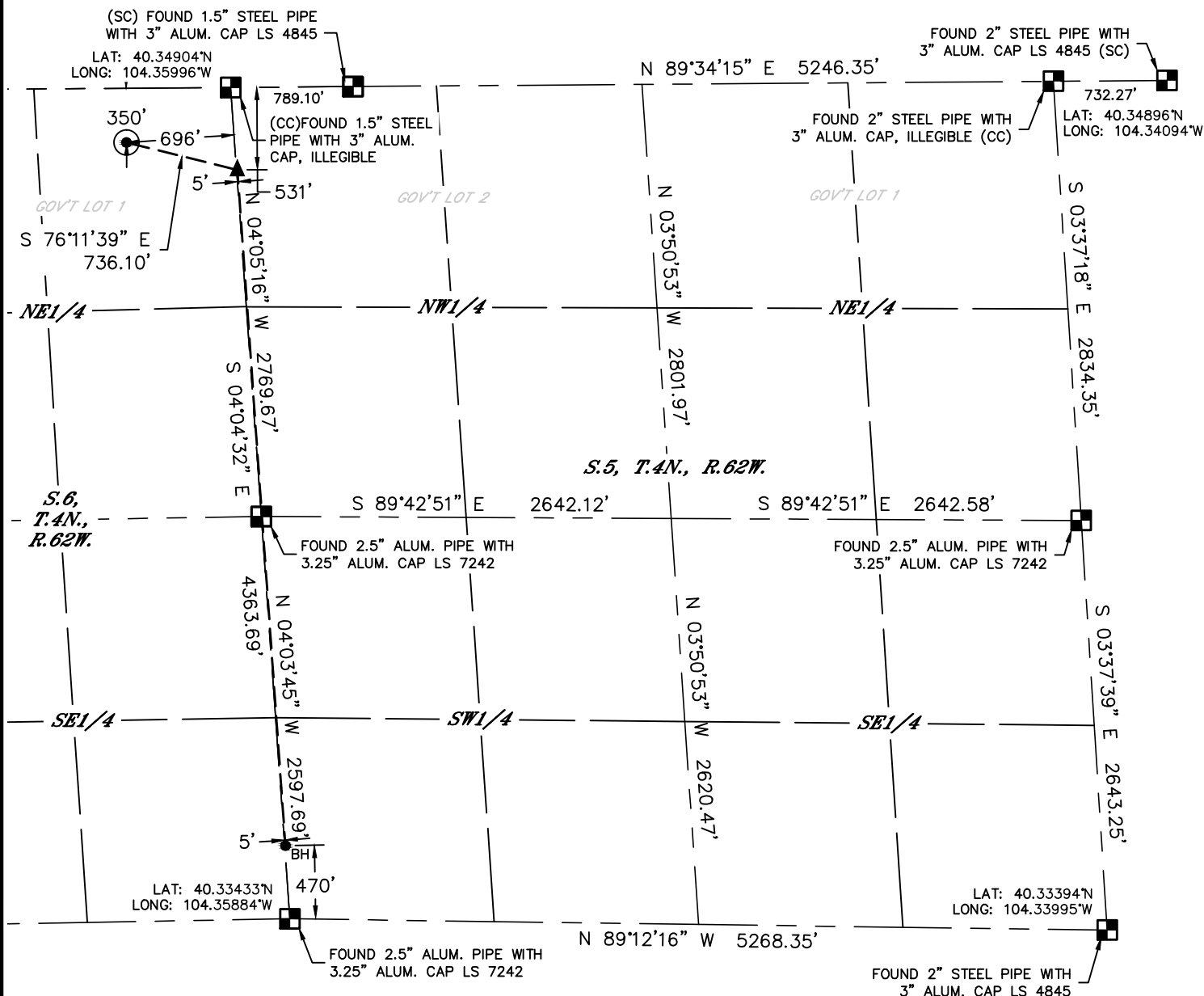


Lat40°, Inc. 6250 W. 10th Street, Unit 2, Greeley, CO 970-515-5294

# WELL LOCATION CERTIFICATE

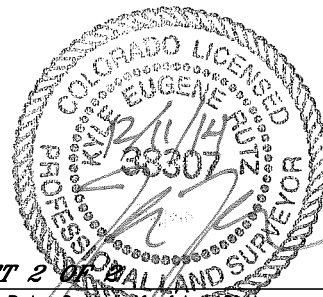
STATE SEVENTY HOLES U-Y-6HC

SECTION: 6  
TOWNSHIP: 4N  
RANGE: 62W  
6TH. P.M.  
WELD COUNTY, CO



## LEGEND

- = ALIQUOT MONUMENT AS DESCRIBED
- = CALCULATED POSITION
- = SURFACE HOLE LOCATION (SHL)
- ▲ = ENTRY POINT LOCATION (EP)
- <sub>BH</sub> = BOTTOM HOLE LOCATION (BHL)
- ⊙ = EXISTING WELL
- ⊙ = ABANDONED WELL



**SHEET 2**

Kyle E. Rutz On Behalf of Lat40°, Inc.  
Colorado Licensed Professional Land Surveyor No. 38307  
DATE: 12/19/2014  
PROJECT#: 2014214