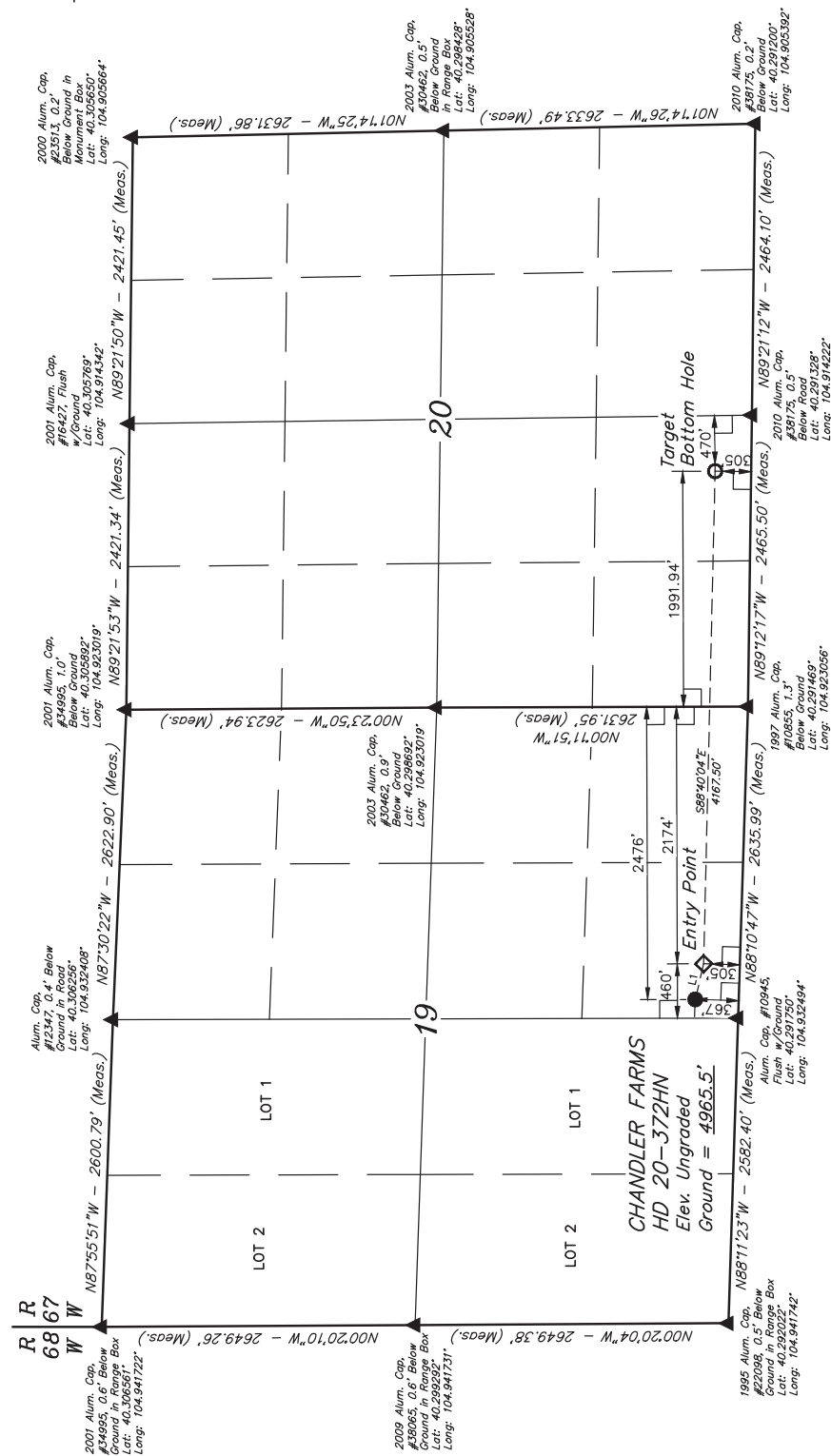


T4N, R67W, 6th P.M.

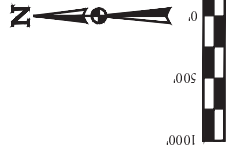
GREAT WESTERN OIL & GAS COMPANY

CHANDLER FARMS HD 20-372HN
SW 1/4, SECTION 19, T4N, R67W, 6th P.M.
WELD COUNTY, COLORADO

BASIS OF BEARINGS
BASIS OF BEARINGS IS A GPS OBSERVATION
BASIS OF ELEVATION
USGS COOPERATIVE BASE NETWORK CONTROL STATION,
DESIGNATION "VERMILYEA". NGSDATA SHEET LISTS THE
NAVD 88 ELEVATION AS BEING 5026 FEET.



LINE TABLE		
LINE	DIRECTION	LENGTH
L1	S76°44'10"E	310.24'



CERTIFICATE OF REGISTRATION
THIS IS TO CERTIFY THAT THE ABOVE NAMED SURVEYOR HAS BEEN QUALIFIED BY THE BOARD OF SURVEYORS OF THE STATE OF COLORADO TO THE BEST OF THEIR KNOWLEDGE AND BELIEF.



UELS, LLC
Corporate Office - 85 South 200 East
Vernal, UT 84078 • (435) 789-1017

SURVEYED BY: GREG WEIMER, C.J.		DATE: 09-03-14
DRAWN BY: J.W.		DATE DRAWN: 09-16-14
SCALE: 1" = 1000'		REVISED: 10-15-14
WELL LOCATION PLAT		

PDOP = 1.6		NAD 83 (SURFACE LOCATION)	
NAD 83 (TARGET BOTTOM HOLE)		LATITUDE = 40°17'33.86" (40.292739)	
LONGITUDE = 104°54'57.29" (104.915914)		LONGITUDE = 104°55'51.03" (104.930842)	
NAD 27 (TARGET BOTTOM HOLE)		LATITUDE = 40°17'33.92" (40.292750)	
LONGITUDE = 104°54'53.38" (104.915383)		LONGITUDE = 104°55'53.00" (104.931389)	

LEGEND:
L = 90° SYMBOL
● = PROPOSED WELLHEAD.
◆ = ENTRY POINT.
○ = TARGET BOTTOM HOLE.
▲ = SECTION CORNERS LOCATED.