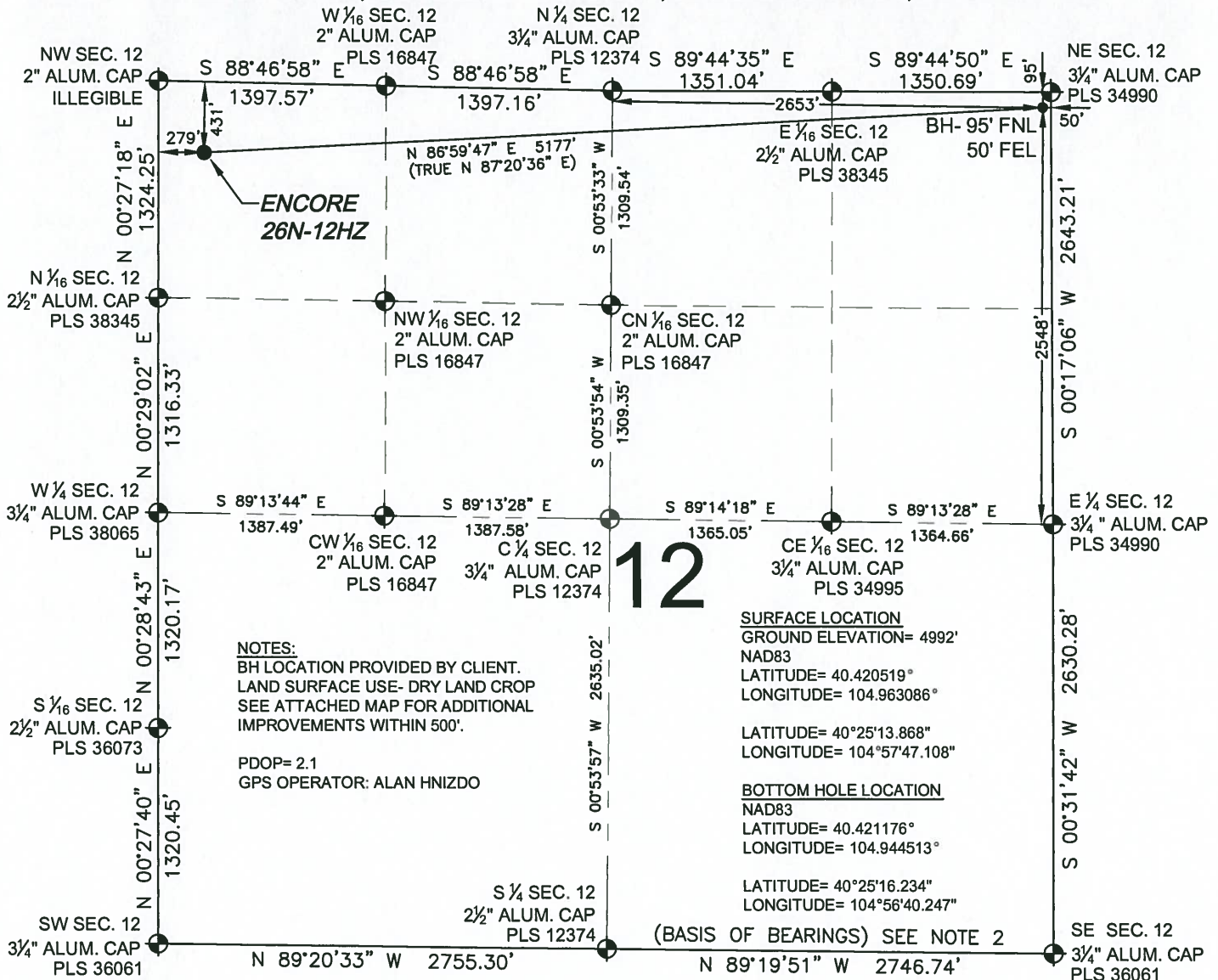


# WELL LOCATION CERTIFICATE: ENCORE 26N-12HZ

SECTION 12, TOWNSHIP 5 NORTH, RANGE 68 WEST, 6TH P.M.



NOTES:  
BH LOCATION PROVIDED BY CLIENT.  
LAND SURFACE USE- DRY LAND CROP  
SEE ATTACHED MAP FOR ADDITIONAL  
IMPROVEMENTS WITHIN 500'.

PDOP= 2.1  
GPS OPERATOR: ALAN HNIZDO

SURFACE LOCATION  
GROUND ELEVATION= 4992'  
NAD83  
LATITUDE= 40.420519°  
LONGITUDE= 104.963086°

LATITUDE= 40°25'13.868"  
LONGITUDE= 104°57'47.108"

BOTTOM HOLE LOCATION  
NAD83  
LATITUDE= 40.421176°  
LONGITUDE= 104.944513°

LATITUDE= 40°25'16.234"  
LONGITUDE= 104°56'40.247"

(BASIS OF BEARINGS) SEE NOTE 2

WELL ENCORE 26N-12HZ TO BE LOCATED 431' FNL AND 279' FWL

## LEGEND

- ⊕ = EXISTING MONUMENT    ⊕ = BOTTOM HOLE  
● = PROPOSED WELL    ◆ = EXISTING WELL  
BH = BOTTOM HOLE

## NOTES:

1. THIS FIELD SURVEY CONFORMS TO THE MINIMUM STANDARDS SET BY THE C.O.G.C.C., RULE NO. 215
2. BEARINGS AND DISTANCES SHOWN HEREON ARE GRID AND BASED ON THE COLORADO STATE PLANE COORDINATE SYSTEM, NAD 83/2011 BETWEEN MONUMENTS AS LABELED HEREON AND ELEVATIONS SHOWN ARE NAVD 88, AS DERIVED BY GPS OBSERVATIONS
3. GRID DISTANCES ARE SHOWN, AS MEASURED IN THE FIELD, WITH TIES TO WELLS MEASURED PERPENDICULAR TO SECTION LINES.

I, BRADLEY L. LAMAN, A LICENSED PROFESSIONAL LAND SURVEYOR IN THE STATE OF COLORADO DO HEREBY CERTIFY TO KERR-MCGEE OIL & GAS ONSHORE LP, THAT THE SURVEY AND WELL LOCATION CERTIFICATE SHOWN HEREON WERE DONE BY ME OR UNDER MY DIRECT SUPERVISION AND THAT THE DRAWING SHOWN HEREON ACCURATELY DEPICTS THE PROPOSED LOCATION OF THE WELL. THIS CERTIFICATE DOES NOT REPRESENT A LAND SURVEY PLAT OR IMPROVEMENT SURVEY PLAT AS DEFINED BY C.R.S. 38-51-102 AND CANNOT BE RELIED UPON TO DETERMINE OWNERSHIP.

BRADLEY L. LAMAN, PLS 38345  
COLORADO LICENSED PROFESSIONAL LAND SURVEYOR  
FOR AND ON BEHALF OF P.F.S., LLC

PREPARED BY: <b>PFS</b> Petroleum Field Services, LLC 1801 W. 13th Ave. Denver, CO 80204	FIELD DATE: 10-01-13 DRAWING DATE: 10-10-13 BY: SMF CHECKED: TJN	SURFACE LOCATION: NW 1/4, NW 1/4, SEC. 12, T5N, R68W, 6TH P.M. LARIMER COUNTY, COLORADO
--	---	--

NOTICE: ACCORDING TO COLORADO LAW YOU MUST COMMENCE ANY LEGAL ACTION BASED UPON ANY DEFECT IN THIS SURVEY WITHIN THREE YEARS AFTER YOU FIRST DISCOVER SUCH DEFECT. IN NO EVENT MAY ANY ACTION BASED UPON ANY DEFECT IN THIS SURVEY BE COMMENCED MORE THAN TEN YEARS FROM THIS SAID DATE OF THIS CERTIFICATION SHOWN HEREON.

