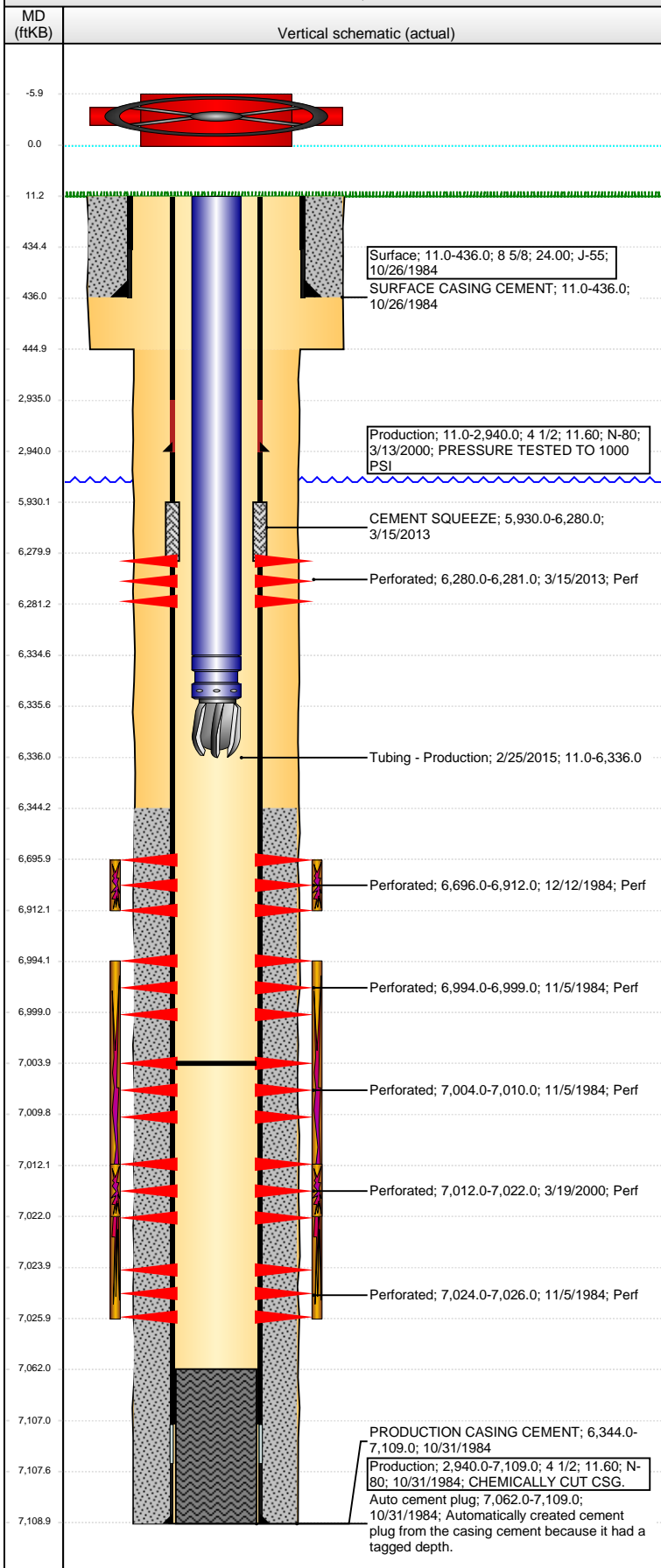


**Well Name: WILKINSON 1**

VERTICAL - ORIGINAL HOLE, 2/25/2015 1:35:59 PM



## Well Header

API 05-123-12057	Business Unit DJ BASIN	District 15	Well Config VERTICAL
Original KB Elevation (ft) 4,702.00	KB - GL / MSL (ftKB) 11.00	Spud Date 10/25/1984	P & A Date

## Comment

STATE HAS WELL AS PR, CARTE HAS IT SI LONG TERM. MIGHT BE PACKER FISH IN HOLE. WAS AT 6961', BUT THEY HAVE TAGGED DEEPER SINCE.  
NO TURN ON DATES - USED TEST DATE FROM COMP RPT. WELL DRILLED/COMPLETED '84, BUT NOT TURNED ON TIL '86. BEST ESTIMATE ON TBG SET DEPTH/ROCK BIT ON 3/18/13. UNSURE IF THEY DROPPED THE BIT TO RAT HOLE.  
MINIMAL DATA

## Directions To Well

## Current PBTD (ftKB)

ORIGINAL HOLE - 7,004.0

## Surface Location (Congressional)

Quarter 1	Quarter 2	Quarter 3	Quarter 4	Section	Township	Twnshp N...	Range	Rng E/W Dir
		SE	NE	35	5	N	65	W

## Bottom Hole Location

North-South Distance (ft)	From N or S Line	East-West Distance (ft)	From E or W Line

## Plug Back Total Depths

Date	Depth (ftKB)	Method	Com
11/5/1984	7,062.0	CASED HOLE LOG	DEPTH LOGGER FROM CBL.
3/17/2000	7,070.0	TAG	CLEAN OUT TO 7070'
4/28/2005	7,004.0	TAG	TAG TO LAND TBG.

## Wellbore Sections

Section Des	Size (in)	Act Top, MD (ftKB)	Act Btm, MD (ftKB)
SURFACE	12 1/4	11.0	445.0
PRODUCTION	7 7/8	445.0	7,109.0

## Zone Statuses

Zone Name	Status Date	Status	Fluid Type	Job
NIOBRARA	1/20/1986	PR		DRILLING/COMPLETION - ORIGINAL, 10/25/1984 00:00
NIOBRARA	4/1/2000	PR		RE-FRAC, 2/27/2000 00:00
CODELL	1/20/1986	PR		DRILLING/COMPLETION - ORIGINAL, 10/25/1984 00:00
CODELL	4/1/2000	PR		RE-FRAC, 2/27/2000 00:00

## Casing Strings

Csg Des	Run Date	OD (in)	Wt/Len (lb/ft)	Grade	Top, MD (ftKB)	MD (ftKB)
Surface	10/26/1984	8 5/8	24.00	J-55	11.0	436.0
Production	3/13/2000	4 1/2	11.60	N-80	11.0	2,940.0
Production	10/31/1984	4 1/2	11.60	N-80	11.0	7,109.0

## Cement

Des	Top (ftKB)	Btm (ftKB)
SURFACE CASING CEMENT	11.0	436.0
PRODUCTION CASING CEMENT	6,344.0	7,109.0
CEMENT SQUEEZE	5,930.0	6,280.0

## Tubing Components

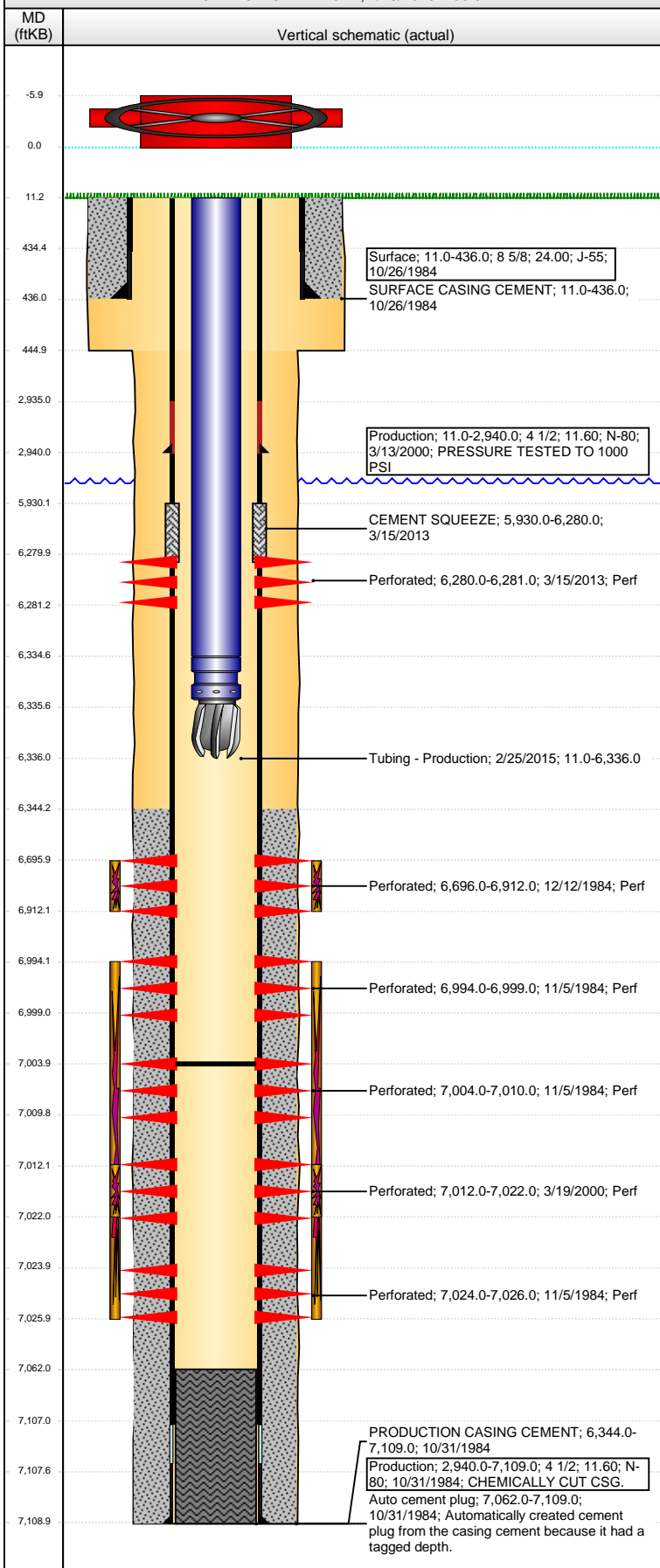
Item Des	OD (in)	Wt (lb/ft)	Grade	Jts	Len (ft)
Tubing	2 3/8			198	6,323.50
Seating Nipple	2 3/8			1	1.00
Blade Bit	2 3/8			1	0.50

## Perforation Data

Zone	Bnch/St g	Entered Shot Total	Top (ftKB)	Btm (ftKB)	Date
NIOBRARA, ORIGINAL HOLE		3	6,280.01	6,281.01	3/15/2013
CODELL, ORIGINAL HOLE		16	6,696.00	6,912.00	12/12/1984
CODELL, ORIGINAL HOLE		2	6,994.00	6,999.00	11/5/1984
CODELL, ORIGINAL HOLE		3	7,004.00	7,010.00	11/5/1984
CODELL, ORIGINAL HOLE		40	7,012.00	7,022.00	3/19/2000
CODELL, ORIGINAL HOLE		15	7,024.00	7,026.00	11/5/1984

**Well Name: WILKINSON 1**

VERTICAL - ORIGINAL HOLE, 2/25/2015 1:36:01 PM



## Stimulations & Treatments

Bnch/Stg	Date	Zone	Primary Job Type
11/6/1984	CODELL, ORIGINAL HOLE	DRILLING/COMPLETION - ORIGINAL	
Comment			
Total Add Amount		Total Clean Volume...	Vol Slurry Tot (gal)
Proppant Bulk Sand 85500 lb			48510.00
Avg Treat Pressure (psi)		Max Treat Pressure (psi)	Avg Treat Rate (bbl/min)
5,000.0		8,000.0	
Bnch/Stg	Date	Zone	Primary Job Type
12/12/1984	NIORARA, ORIGINAL HOLE	DRILLING/COMPLETION - ORIGINAL	
Comment			
Total Add Amount		Total Clean Volume...	Vol Slurry Tot (gal)
Proppant Bulk Sand 268500 lb; Proppant Resin Coated Sand 30000 lb			145740.00
Avg Treat Pressure (psi)		Max Treat Pressure (psi)	Avg Treat Rate (bbl/min)
4,900.0		5,600.0	
Bnch/Stg	Date	Zone	Primary Job Type
3/22/2000	CODELL, ORIGINAL HOLE	DRILLING/COMPLETION - ORIGINAL	
Comment			
Total Add Amount		Total Clean Volume...	Vol Slurry Tot (gal)
Proppant Bulk Sand 254200 lb			31920.00
Avg Treat Pressure (psi)		Max Treat Pressure (psi)	Avg Treat Rate (bbl/min)
4,157.0		6,420.0	

## Other In Hole

Run Date	Des	OD (in)	Top (ftKB)	Btm (ftKB)

## Logs

Date	Type	Top, MD (ftKB)	Btm, MD (ftKB)
10/31/1984	COMPENSATED NEUTRON	4,350.0	7,109.0
10/31/1984	INDUCTION	400.0	7,109.0
11/5/1984	CEMENT BOND	6,250.0	7,060.0
3/18/2013	CASED HOLE	5,930.0	6,200.0