

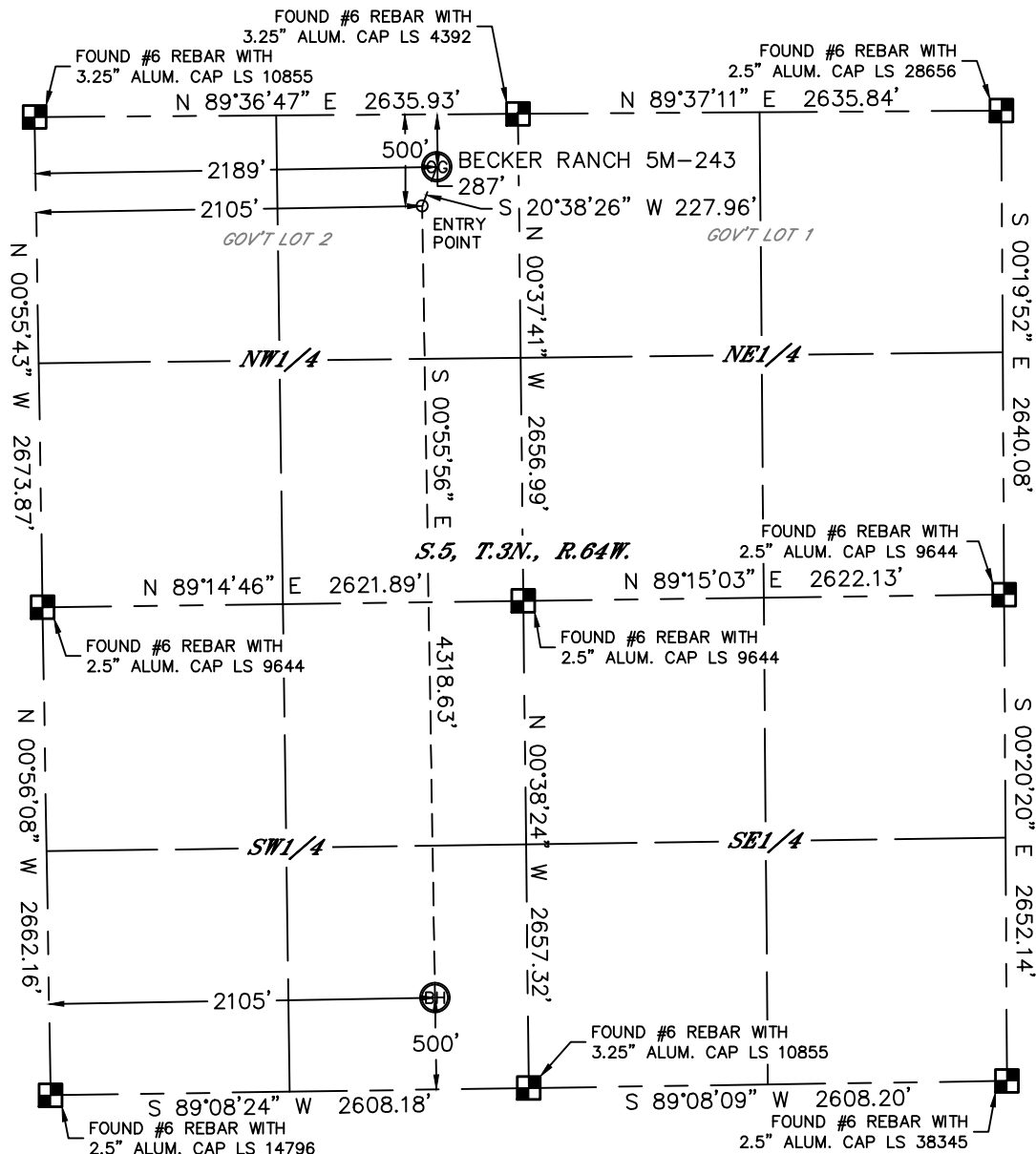


Lat40°, Inc. 1635 Foxtrail Drive, Suite 325 Loveland, CO 970-776-3321

# WELL LOCATION CERTIFICATE

THIS MAP DOES NOT REPRESENT A BOUNDARY SURVEY

SECTION: 5  
TOWNSHIP: 3N  
RANGE: 64W



In accordance with a request from Mac Neumann with PDC ENERGY Lat40°, Inc. has determined the surface location of the BECKER RANCH 5M-243 to be 287' from the NORTH line and 2189' from the WEST line and the bottom hole to be 500' from the SOUTH line and 2105' from the WEST line as measured at right angles from the section lines of Section 5, Township 3 North, Range 64 West of the Sixth Principal Meridian, County of Weld, State of Colorado.

I hereby state that this Well Location Certificate was prepared by me, or under my direct supervision, that the fieldwork was completed on 7/17/2013, for and on behalf of PDC ENERGY. That this is not a Land Survey Plat or an Improvement Survey Plat, and that it is not to be relied upon for establishment of fence, building, or other future improvement lines.

**SURFACE LOCATION**  
LAT: 40.26098°N  
LONG: 104.57640°W  
PDOP: 1.4  
ELEV: 4815'  
1/4, 1/4: NE1/4NW1/4

**BOTTOM HOLE**  
LAT: 40.24855°N  
LONG: 104.57660°W

**ENTRY POINT**  
LAT: 40.26040°N  
LONG: 104.57669°W

## NOTE:

- 1) Bearings shown are Grid Bearings of the Colorado State Plane Coordinate System, North Zone, North American Datum 1983/2007. The lineal dimensions as contained herein are based upon the "U.S. Survey Foot."
- 2) Ground elevations are based on an observed GPS elevation (NAVD 1988 DATUM).
- 3) IMPROVEMENTS: See LOCATION DRAWING for all visible improvements within 400' of disturbed area.
- 4) SURFACE USE: RANGELAND
- 5) INSTRUMENT OPERATOR: ADAM KELLY
- 6) NEAREST CULTURAL ITEMS:  
BUILDING: 555' NW  
BUILDING UNIT: **BU1** 555' NW  
HIGH OCCUPANCY BUILDING UNIT: 5280'+  
DESIGNATED OUTSIDE ACTIVITY AREA: 5280'+  
PUBLIC ROAD: 283' N  
ABOVE GROUND UTILITY: 623' NW  
RAILROAD: 5280'+  
PROPERTY LINE: 287' N

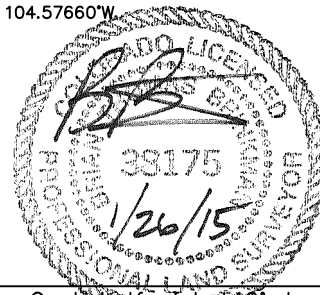
## LEGEND

- = ALIQUOT MONUMENT AS DESCRIBED  
○ = CALCULATED POSITION

Brian T. Brinkman—On behalf of Lat40°, Inc.

Colorado Licensed Professional  
Land Surveyor No. 38175

DATE: 01/26/2015  
PROJECT#: 2013107



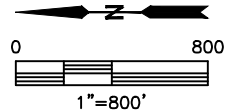
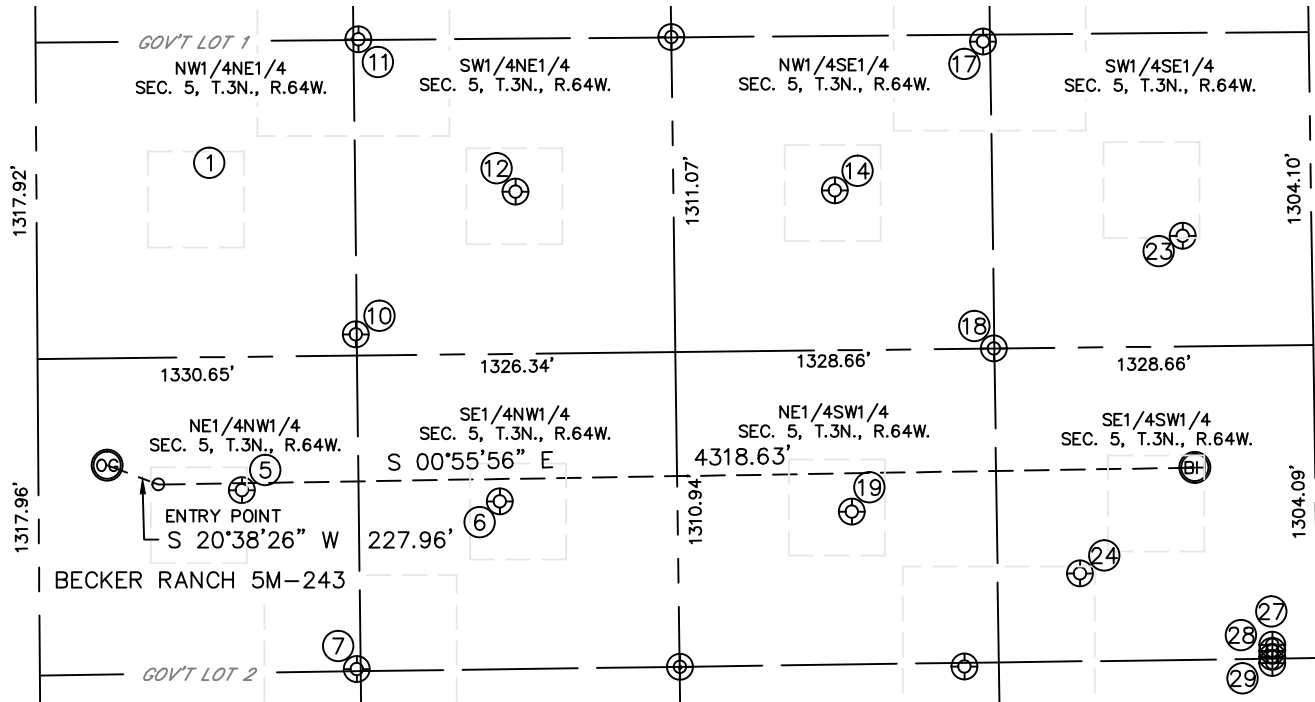


Lat40°, Inc. 1635 Foxtrail Drive, Suite 325 Loveland, CO 970-776-3321

# SITE SKETCH

## BECKER RANCH 5M-243

SECTION: 5  
TOWNSHIP: 3N  
RANGE: 64W



WELL NO.	WELL NAME	SHL FOOTAGE				SHL LAT°	SHL LONG°	PDOP	ELEV (FT.)	1/4/1/4
1	BECKER 5-6	611	FNL	1887	FEL	40.26008	-104.57213	2.5	4788	NWNE
5	BECKER 5-11	848	FNL	2076	FWL	40.25944	-104.57679	1.4	4812	NENW
6	BECKER 5-3	1922	FNL	2011	FWL	40.25650	-104.57700	1.4	4801	SENW
7	BECKER 5	1321	FNL	1323	FWL	40.25815	-104.57948	1.4	4826	NENW
10	BECKER 6-11 I	1327	FNL	2540	FEL	40.25812	-104.57448	1.6	4788	NWNE
12	BECKER 6-12	1996	FNL	1950	FEL	40.25628	-104.57238	1.7	4771	SWNE
14	BECKER 5-1	1982	FSL	1952	FEL	40.25263	-104.57241	1.9	4768	NWSE
17	BECKER 6	1356	FSL	1337	FEL	40.25092	-104.57022	1.3	4744	NWSE
18	BECKER 15-9I	1330	FSL	2615	FEL	40.25083	-104.57479	1.8	4752	NWSE
19	BECKER 5-13	1932	FSL	1946	FWL	40.25247	-104.57721	1.8	4765	NESW
23	BECKER 5-15	537	FSL	2151	FEL	40.24866	-104.57314	1.6	4734	SWSE
24	BECKER 5-2	986	FSL	1673	FWL	40.24987	-104.57816	1.9	4752	SESW
27	LDS D08-28D	190	FSL	1362	FWL	40.24769	-104.57926	2.5	4751	SESW
28	LDS D08-18D	190	FSL	1336	FWL	40.24769	-104.57935	2.4	4751	SESW
29	LDS D08-29D	190	FSL	1311	FWL	40.24769	-104.57944	5.3	4751	SESW

DATE: 01/26/2015  
PROJECT#: 2013107