

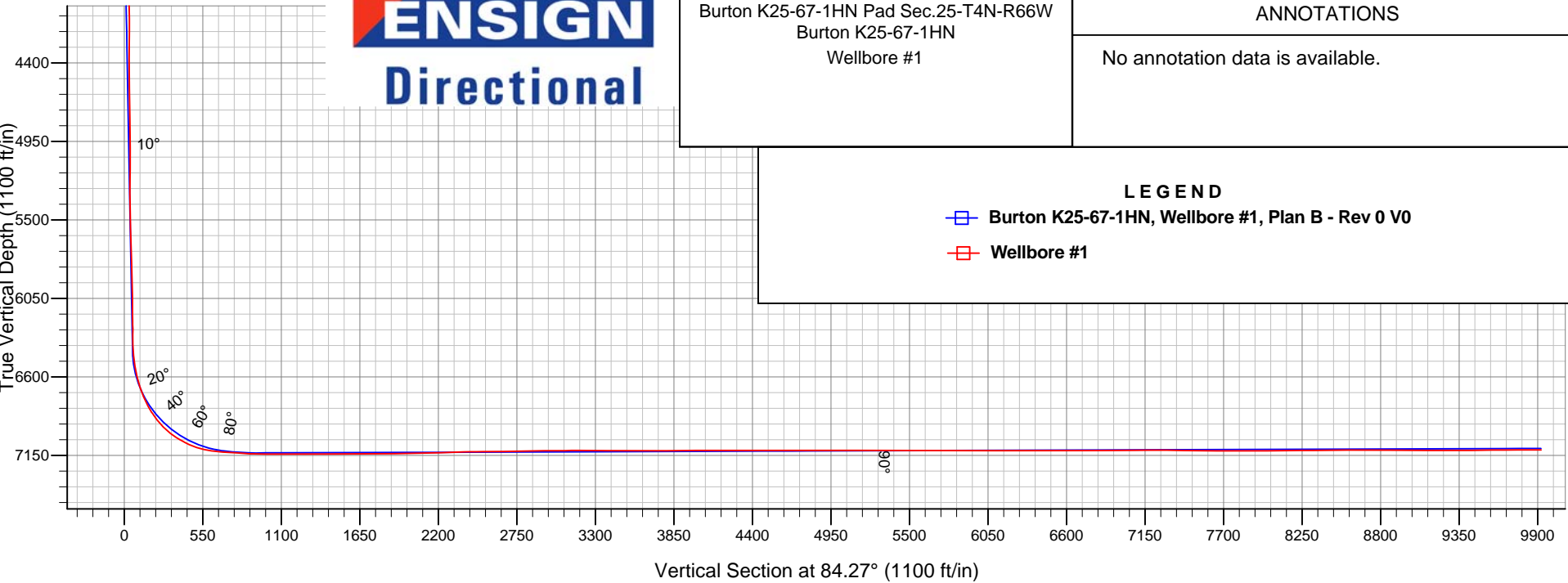
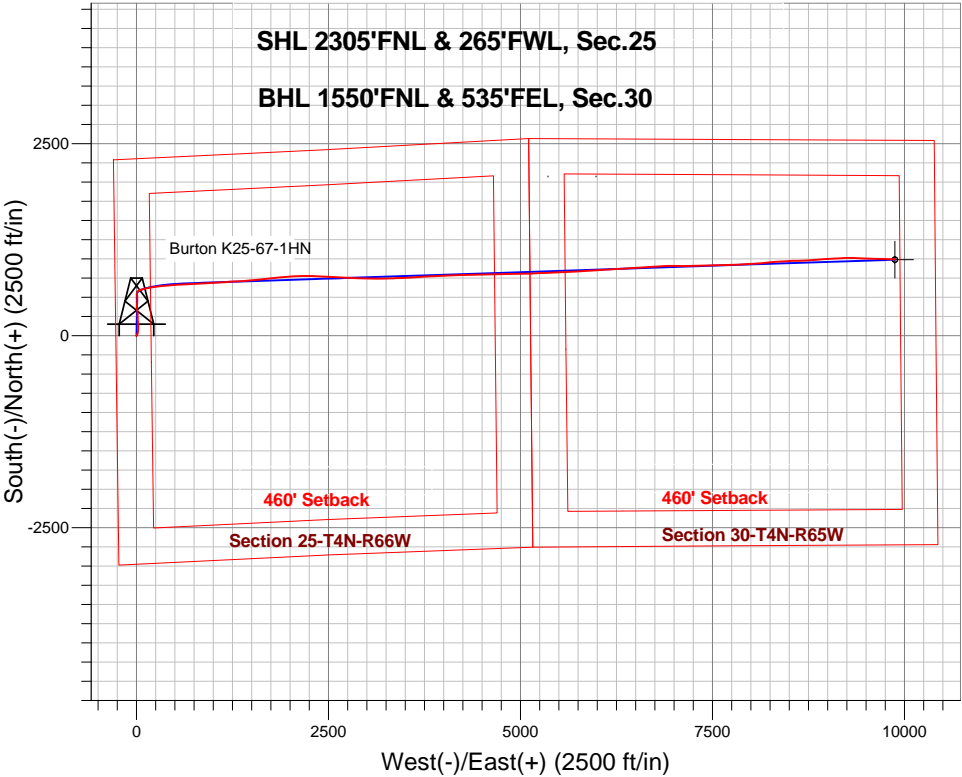
Noble Energy Inc.- Weld County, CO (Grid North)

Well Name: **Burton K25-67-1HN**

Surface Location: Burton K25-67-1HN Pad Sec.25-T4N-R66W
North American Datum 1983 , US State Plane 1983 , Colorado Northern Zone
Ground Elevation: 4775.0
+N/-S +E/-W Northing Easting Latitude Longitude Slot
0.0 0.0 1347185.54 3213718.40 40.283890 -104.733940
PD 829 RKB -16' WELL @ 4791.0ft (PD 829 RKB -16')

FINAL SURVEY

Projected Bottom Hole Location
16779'MD 7111'TVD 997'N & 9874'E of SHL
90.14 degree Incl @ 90.46 degree AZM





Noble Energy Inc.- Weld County, CO (Grid North)

Sec.25-T4N-R66W

Burton K25-67-1HN Pad Sec.25-T4N-R66W

Burton K25-67-1HN

Wellbore #1

Design: Wellbore #1

Standard Survey Report

04 December, 2014

Company:	Noble Energy Inc.- Weld County, CO (Grid North)	Local Co-ordinate Reference:	Well Burton K25-67-1HN
Project:	Sec.25-T4N-R66W	TVD Reference:	WELL @ 4791.0ft (PD 829 RKB -16')
Site:	Burton K25-67-1HN Pad Sec.25-T4N-R66W	MD Reference:	WELL @ 4791.0ft (PD 829 RKB -16')
Well:	Burton K25-67-1HN	North Reference:	Grid
Wellbore:	Wellbore #1	Survey Calculation Method:	Minimum Curvature
Design:	Wellbore #1	Database:	Landmark

Survey									
Measured Depth (ft)	Inclination (°)	Azimuth (°)	Vertical Depth (ft)	+N/-S (ft)	+E/-W (ft)	Vertical Section (ft)	Dogleg Rate (°/100ft)	Build Rate (°/100ft)	Turn Rate (°/100ft)
1,355.0	0.80	19.50	1,354.8	8.2	2.5	3.3	0.38	0.32	-19.58
1,449.0	0.60	33.90	1,448.8	9.2	3.0	3.9	0.28	-0.21	15.32
1,544.0	0.70	42.20	1,543.8	10.0	3.7	4.7	0.14	0.11	8.74
1,639.0	0.40	13.10	1,638.8	10.8	4.2	5.2	0.42	-0.32	-30.63
1,734.0	0.20	235.60	1,733.8	11.0	4.1	5.2	0.59	-0.21	-144.74
1,829.0	0.40	325.00	1,828.8	11.2	3.8	4.9	0.47	0.21	94.11
1,924.0	0.20	301.30	1,923.8	11.6	3.4	4.6	0.24	-0.21	-24.95
2,038.0	0.00	318.40	2,037.8	11.7	3.3	4.4	0.18	-0.18	0.00
2,127.0	0.70	43.10	2,126.8	12.1	3.6	4.8	0.79	0.79	0.00
2,217.0	1.00	7.30	2,216.8	13.2	4.1	5.4	0.66	0.33	-39.78
2,307.0	0.70	29.50	2,306.8	14.5	4.5	5.9	0.49	-0.33	24.67
2,396.0	0.60	57.30	2,395.8	15.2	5.1	6.6	0.37	-0.11	31.24
2,486.0	0.80	137.00	2,485.8	15.0	6.0	7.4	1.01	0.22	88.56
2,575.0	0.90	167.80	2,574.8	13.9	6.5	7.9	0.52	0.11	34.61
2,665.0	0.90	161.00	2,664.8	12.5	6.9	8.1	0.12	0.00	-7.56
2,755.0	0.70	159.10	2,754.7	11.3	7.3	8.4	0.22	-0.22	-2.11
2,844.0	0.60	181.30	2,843.7	10.4	7.5	8.5	0.30	-0.11	24.94
2,934.0	0.40	234.90	2,933.7	9.7	7.3	8.2	0.54	-0.22	59.56
3,024.0	0.70	277.50	3,023.7	9.6	6.5	7.4	0.54	0.33	47.33
3,113.0	1.30	26.30	3,112.7	10.6	6.4	7.4	1.87	0.67	122.25
3,203.0	3.30	19.80	3,202.6	13.9	7.7	9.0	2.24	2.22	-7.22
3,292.0	4.60	20.20	3,291.4	19.7	9.8	11.7	1.46	1.46	0.45
3,382.0	5.80	16.70	3,381.1	27.4	12.3	15.0	1.38	1.33	-3.89
3,472.0	7.50	14.80	3,470.5	37.5	15.2	18.8	1.90	1.89	-2.11
3,561.0	8.30	5.30	3,558.6	49.5	17.2	22.1	1.72	0.90	-10.67
3,651.0	8.30	1.20	3,647.7	62.4	18.0	24.1	0.66	0.00	-4.56
3,741.0	9.50	7.30	3,736.6	76.3	19.0	26.6	1.69	1.33	6.78
3,830.0	10.40	3.70	3,824.2	91.6	20.5	29.5	1.23	1.01	-4.04
3,920.0	12.60	359.30	3,912.4	109.5	20.9	31.7	2.63	2.44	-4.89
4,010.0	12.40	2.10	4,000.3	129.0	21.1	33.9	0.71	-0.22	3.11
4,099.0	10.70	357.20	4,087.5	146.8	21.1	35.6	2.20	-1.91	-5.51
4,189.0	9.20	353.30	4,176.1	162.3	19.8	35.9	1.83	-1.67	-4.33
4,278.0	8.40	350.00	4,264.1	175.8	17.9	35.3	1.06	-0.90	-3.71
4,368.0	8.70	351.70	4,353.1	189.0	15.8	34.5	0.44	0.33	1.89
4,458.0	9.20	359.30	4,442.0	202.9	14.7	34.9	1.43	0.56	8.44
4,547.0	8.50	356.70	4,529.9	216.6	14.2	35.8	0.91	-0.79	-2.92
4,637.0	9.30	357.30	4,618.9	230.5	13.5	36.4	0.89	0.89	0.67
4,726.0	9.80	359.00	4,706.6	245.3	13.0	37.4	0.64	0.56	1.91
4,816.0	11.30	359.50	4,795.1	261.7	12.8	38.9	1.67	1.67	0.56
4,905.0	11.40	1.60	4,882.4	279.2	13.0	40.8	0.48	0.11	2.36
4,995.0	10.40	357.80	4,970.7	296.3	12.9	42.4	1.37	-1.11	-4.22
5,084.0	9.80	351.10	5,058.4	311.8	11.4	42.5	1.48	-0.67	-7.53
5,174.0	8.20	347.40	5,147.3	325.6	8.9	41.3	1.89	-1.78	-4.11
5,264.0	9.40	354.10	5,236.2	339.2	6.7	40.5	1.75	1.33	7.44
5,353.0	9.80	354.60	5,323.9	353.9	5.2	40.5	0.46	0.45	0.56
5,443.0	10.00	355.80	5,412.6	369.4	3.9	40.8	0.32	0.22	1.33
5,533.0	9.40	3.50	5,501.3	384.5	3.8	42.2	1.59	-0.67	8.56
5,622.0	9.40	4.00	5,589.1	399.0	4.8	44.6	0.09	0.00	0.56
5,712.0	9.30	7.60	5,677.9	413.5	6.2	47.5	0.66	-0.11	4.00
5,802.0	10.30	0.30	5,766.6	428.8	7.2	50.0	1.77	1.11	-8.11
5,891.0	10.50	6.20	5,854.2	444.8	8.2	52.5	1.22	0.22	6.63
5,981.0	11.40	1.10	5,942.5	461.9	9.2	55.3	1.47	1.00	-5.67
6,070.0	11.60	356.70	6,029.7	479.6	8.9	56.7	1.01	0.22	-4.94
6,160.0	11.00	358.00	6,118.0	497.2	8.1	57.7	0.72	-0.67	1.44

Company:	Noble Energy Inc.- Weld County, CO (Grid North)	Local Co-ordinate Reference:	Well Burton K25-67-1HN
Project:	Sec.25-T4N-R66W	TVD Reference:	WELL @ 4791.0ft (PD 829 RKB -16')
Site:	Burton K25-67-1HN Pad Sec.25-T4N-R66W	MD Reference:	WELL @ 4791.0ft (PD 829 RKB -16')
Well:	Burton K25-67-1HN	North Reference:	Grid
Wellbore:	Wellbore #1	Survey Calculation Method:	Minimum Curvature
Design:	Wellbore #1	Database:	Landmark

Survey									
Measured Depth (ft)	Inclination (°)	Azimuth (°)	Vertical Depth (ft)	+N/-S (ft)	+E/-W (ft)	Vertical Section (ft)	Dogleg Rate (°/100ft)	Build Rate (°/100ft)	Turn Rate (°/100ft)
6,250.0	9.50	2.00	6,206.6	513.2	8.0	59.2	1.84	-1.67	4.44
6,340.0	11.70	353.60	6,295.0	529.7	7.3	60.1	2.98	2.44	-9.33
6,429.0	13.10	356.60	6,381.9	548.7	5.7	60.4	1.73	1.57	3.37
6,474.0	12.70	9.30	6,425.8	558.7	6.2	61.9	6.35	-0.89	28.22
6,519.0	13.30	25.20	6,469.7	568.3	9.2	65.8	8.03	1.33	35.33
6,563.0	13.40	45.20	6,512.5	576.5	14.9	72.4	10.45	0.23	45.45
6,608.0	14.00	53.90	6,556.2	583.3	23.0	81.2	4.76	1.33	19.33
6,653.0	14.50	59.50	6,599.9	589.4	32.3	91.0	3.26	1.11	12.44
6,698.0	16.40	67.60	6,643.2	594.7	43.0	102.2	6.38	4.22	18.00
6,743.0	18.30	75.20	6,686.2	598.9	55.7	115.2	6.56	4.22	16.89
6,787.0	21.90	76.40	6,727.5	602.6	70.4	130.2	8.23	8.18	2.73
6,832.0	25.80	75.00	6,768.6	607.1	88.0	148.2	8.76	8.67	-3.11
6,877.0	29.40	75.50	6,808.5	612.4	108.2	168.8	8.02	8.00	1.11
6,922.0	32.80	76.40	6,847.0	618.0	130.7	191.8	7.63	7.56	2.00
6,967.0	36.00	79.60	6,884.2	623.3	155.6	217.0	8.17	7.11	7.11
7,011.0	40.00	81.60	6,918.8	627.7	182.3	244.1	9.51	9.09	4.55
7,056.0	44.80	82.10	6,952.1	632.0	212.3	274.4	10.69	10.67	1.11
7,101.0	49.60	82.40	6,982.6	636.4	245.0	307.3	10.68	10.67	0.67
7,146.0	54.50	82.60	7,010.3	641.1	280.2	342.8	10.89	10.89	0.44
7,191.0	59.90	83.10	7,034.7	645.8	317.7	380.6	12.04	12.00	1.11
7,236.0	62.20	84.40	7,056.4	650.1	356.9	420.0	5.70	5.11	2.89
7,280.0	65.30	84.90	7,075.9	653.7	396.1	459.4	7.12	7.05	1.14
7,325.0	70.70	85.60	7,092.8	657.2	437.7	501.1	12.09	12.00	1.56
7,370.0	76.00	86.60	7,105.6	660.1	480.7	544.2	11.97	11.78	2.22
7,415.0	80.80	86.70	7,114.7	662.7	524.7	588.2	10.67	10.67	0.22
7,482.0	85.00	86.80	7,123.0	666.5	591.1	654.6	6.27	6.27	0.15
7,508.0	85.56	86.49	7,125.1	668.0	616.9	680.5	2.46	2.15	-1.19
7,553.0	85.46	87.00	7,128.6	670.5	661.7	725.4	1.15	-0.22	1.13
7,596.0	85.66	86.84	7,132.0	672.8	704.5	768.2	0.59	0.47	-0.37
7,640.0	86.46	86.84	7,135.0	675.2	748.4	812.0	1.82	1.82	0.00
7,685.0	87.35	86.90	7,137.4	677.7	793.2	856.9	1.98	1.98	0.13
7,730.0	88.39	86.91	7,139.1	680.1	838.1	901.8	2.31	2.31	0.02
7,750.1	88.68	86.94	7,139.6	681.2	858.2	921.9	1.45	1.44	0.13
Burton K25-67-1HN Landing Pt.									
7,775.0	89.04	86.97	7,140.1	682.5	883.0	946.8	1.45	1.44	0.13
7,820.0	89.48	86.62	7,140.7	685.0	928.0	991.7	1.25	0.98	-0.78
7,864.0	89.76	86.48	7,141.0	687.7	971.9	1,035.7	0.71	0.64	-0.32
7,909.0	89.86	86.58	7,141.1	690.4	1,016.8	1,080.7	0.31	0.22	0.22
7,954.0	90.00	86.54	7,141.2	693.1	1,061.7	1,125.6	0.32	0.31	-0.09
7,999.0	89.90	86.65	7,141.2	695.8	1,106.6	1,170.6	0.33	-0.22	0.24
8,044.0	90.07	86.42	7,141.2	698.5	1,151.6	1,215.6	0.64	0.38	-0.51
8,089.0	90.21	86.21	7,141.1	701.4	1,196.5	1,260.5	0.56	0.31	-0.47
8,133.0	90.21	86.80	7,141.0	704.1	1,240.4	1,304.5	1.34	0.00	1.34
8,178.0	90.52	87.23	7,140.7	706.4	1,285.3	1,349.4	1.18	0.69	0.96
8,223.0	90.41	86.52	7,140.3	708.9	1,330.3	1,394.4	1.60	-0.24	-1.58
8,268.0	89.90	86.43	7,140.2	711.6	1,375.2	1,439.4	1.15	-1.13	-0.20
8,312.0	89.76	85.52	7,140.3	714.7	1,419.1	1,483.3	2.09	-0.32	-2.07
8,357.0	90.24	85.74	7,140.3	718.2	1,463.9	1,528.3	1.17	1.07	0.49
8,402.0	90.55	84.82	7,140.0	721.9	1,508.8	1,573.3	2.16	0.69	-2.04
8,447.0	90.24	84.53	7,139.7	726.0	1,553.6	1,618.3	0.94	-0.69	-0.64
8,492.0	90.28	83.69	7,139.5	730.7	1,598.3	1,663.3	1.87	0.09	-1.87
8,537.0	90.41	83.24	7,139.2	735.8	1,643.1	1,708.3	1.04	0.29	-1.00
8,581.0	90.31	82.96	7,138.9	741.1	1,686.7	1,752.3	0.68	-0.23	-0.64

Company:	Noble Energy Inc.- Weld County, CO (Grid North)	Local Co-ordinate Reference:	Well Burton K25-67-1HN
Project:	Sec.25-T4N-R66W	TVD Reference:	WELL @ 4791.0ft (PD 829 RKB -16')
Site:	Burton K25-67-1HN Pad Sec.25-T4N-R66W	MD Reference:	WELL @ 4791.0ft (PD 829 RKB -16')
Well:	Burton K25-67-1HN	North Reference:	Grid
Wellbore:	Wellbore #1	Survey Calculation Method:	Minimum Curvature
Design:	Wellbore #1	Database:	Landmark

Survey									
Measured Depth (ft)	Inclination (°)	Azimuth (°)	Vertical Depth (ft)	+N/-S (ft)	+E/-W (ft)	Vertical Section (ft)	Dogleg Rate (°/100ft)	Build Rate (°/100ft)	Turn Rate (°/100ft)
8,626.0	90.69	83.00	7,138.5	746.6	1,731.4	1,797.3	0.85	0.84	0.09
8,671.0	90.31	83.81	7,138.2	751.7	1,776.1	1,842.3	1.99	-0.84	1.80
8,716.0	90.58	84.16	7,137.8	756.4	1,820.8	1,887.3	0.98	0.60	0.78
8,761.0	90.69	84.81	7,137.3	760.8	1,865.6	1,932.3	1.46	0.24	1.44
8,806.0	90.89	85.24	7,136.7	764.7	1,910.5	1,977.3	1.05	0.44	0.96
8,850.0	90.89	85.94	7,136.0	768.1	1,954.3	2,021.2	1.59	0.00	1.59
8,895.0	91.03	86.80	7,135.2	770.9	1,999.2	2,066.2	1.94	0.31	1.91
8,940.0	91.31	87.51	7,134.3	773.1	2,044.2	2,111.1	1.70	0.62	1.58
8,985.0	91.51	87.99	7,133.2	774.9	2,089.1	2,156.0	1.16	0.44	1.07
9,029.0	91.68	88.40	7,132.0	776.3	2,133.1	2,199.9	1.01	0.39	0.93
9,074.0	92.00	88.73	7,130.5	777.4	2,178.0	2,244.8	1.02	0.71	0.73
9,119.0	92.03	89.72	7,129.0	778.0	2,223.0	2,289.6	2.20	0.07	2.20
9,164.0	92.23	90.93	7,127.3	777.8	2,268.0	2,334.3	2.72	0.44	2.69
9,209.0	91.89	91.67	7,125.7	776.7	2,312.9	2,378.9	1.81	-0.76	1.64
9,254.0	91.03	91.95	7,124.5	775.3	2,357.9	2,423.5	2.01	-1.91	0.62
9,298.0	90.34	92.66	7,124.0	773.6	2,401.9	2,467.1	2.25	-1.57	1.61
9,343.0	90.24	93.67	7,123.8	771.1	2,446.8	2,511.5	2.26	-0.22	2.24
9,388.0	90.38	93.76	7,123.5	768.2	2,491.7	2,555.9	0.37	0.31	0.20
9,433.0	90.69	93.56	7,123.1	765.3	2,536.6	2,600.3	0.82	0.69	-0.44
9,478.0	90.72	94.05	7,122.6	762.3	2,581.5	2,644.7	1.09	0.07	1.09
9,522.0	90.79	93.34	7,122.0	759.5	2,625.4	2,688.1	1.62	0.16	-1.61
9,567.0	90.86	93.46	7,121.3	756.8	2,670.3	2,732.5	0.31	0.16	0.27
9,612.0	91.31	92.66	7,120.5	754.4	2,715.2	2,777.0	2.04	1.00	-1.78
9,657.0	91.06	92.43	7,119.5	752.4	2,760.2	2,821.5	0.75	-0.56	-0.51
9,702.0	90.82	92.33	7,118.8	750.5	2,805.1	2,866.1	0.58	-0.53	-0.22
9,746.0	90.79	91.86	7,118.2	748.9	2,849.1	2,909.6	1.07	-0.07	-1.07
9,791.0	90.62	91.70	7,117.6	747.5	2,894.1	2,954.3	0.52	-0.38	-0.36
9,836.0	90.58	91.28	7,117.2	746.3	2,939.1	2,998.9	0.94	-0.09	-0.93
9,880.0	90.31	90.84	7,116.8	745.5	2,983.1	3,042.6	1.17	-0.61	-1.00
9,925.0	90.45	90.54	7,116.5	745.0	3,028.1	3,087.3	0.74	0.31	-0.67
9,970.0	90.79	90.52	7,116.0	744.6	3,073.0	3,132.0	0.76	0.76	-0.04
10,015.0	90.21	90.17	7,115.6	744.3	3,118.0	3,176.8	1.51	-1.29	-0.78
10,060.0	89.79	89.81	7,115.6	744.3	3,163.0	3,221.6	1.23	-0.93	-0.80
10,105.0	89.72	89.14	7,115.8	744.7	3,208.0	3,266.4	1.50	-0.16	-1.49
10,149.0	89.24	89.39	7,116.2	745.3	3,252.0	3,310.2	1.23	-1.09	0.57
10,194.0	89.31	88.57	7,116.8	746.1	3,297.0	3,355.0	1.83	0.16	-1.82
10,239.0	89.48	88.35	7,117.3	747.3	3,342.0	3,399.9	0.62	0.38	-0.49
10,284.0	89.97	87.69	7,117.5	748.9	3,387.0	3,444.8	1.83	1.09	-1.47
10,329.0	90.14	87.46	7,117.5	750.8	3,431.9	3,489.7	0.64	0.38	-0.51
10,373.0	90.14	87.12	7,117.3	752.8	3,475.9	3,533.7	0.77	0.00	-0.77
10,466.0	90.28	86.73	7,117.0	757.8	3,568.8	3,626.6	0.45	0.15	-0.42
10,559.0	90.00	85.86	7,116.8	763.8	3,661.6	3,719.5	0.98	-0.30	-0.94
10,656.0	89.79	86.39	7,117.0	770.4	3,758.3	3,816.5	0.59	-0.22	0.55
10,750.0	90.31	85.71	7,116.9	776.9	3,852.1	3,910.4	0.91	0.55	-0.72
10,844.0	90.41	88.46	7,116.3	781.6	3,946.0	4,004.3	2.93	0.11	2.93
10,967.0	89.83	89.56	7,116.0	783.8	4,069.0	4,126.9	1.01	-0.47	0.89
11,030.0	90.14	88.17	7,116.0	785.0	4,131.9	4,189.7	2.26	0.49	-2.21
11,125.0	89.83	88.51	7,116.1	787.8	4,226.9	4,284.4	0.48	-0.33	0.36
11,218.0	90.03	88.51	7,116.2	790.2	4,319.9	4,377.2	0.22	0.22	0.00
11,313.0	90.38	88.36	7,115.8	792.8	4,414.8	4,471.9	0.40	0.37	-0.16
11,406.0	89.83	87.54	7,115.7	796.1	4,507.8	4,564.7	1.06	-0.59	-0.88
11,498.0	90.07	87.95	7,115.8	799.7	4,599.7	4,656.6	0.52	0.26	0.45
11,591.0	89.62	89.30	7,116.0	802.0	4,692.7	4,749.3	1.53	-0.48	1.45
11,685.0	90.17	89.01	7,116.2	803.4	4,786.7	4,843.0	0.66	0.59	-0.31

Company:	Noble Energy Inc.- Weld County, CO (Grid North)	Local Co-ordinate Reference:	Well Burton K25-67-1HN
Project:	Sec.25-T4N-R66W	TVD Reference:	WELL @ 4791.0ft (PD 829 RKB -16')
Site:	Burton K25-67-1HN Pad Sec.25-T4N-R66W	MD Reference:	WELL @ 4791.0ft (PD 829 RKB -16')
Well:	Burton K25-67-1HN	North Reference:	Grid
Wellbore:	Wellbore #1	Survey Calculation Method:	Minimum Curvature
Design:	Wellbore #1	Database:	Landmark

Survey									
Measured Depth (ft)	Inclination (°)	Azimuth (°)	Vertical Depth (ft)	+N/-S (ft)	+E/-W (ft)	Vertical Section (ft)	Dogleg Rate (°/100ft)	Build Rate (°/100ft)	Turn Rate (°/100ft)
11,774.0	90.31	88.93	7,115.8	805.0	4,875.6	4,931.7	0.18	0.16	-0.09
11,864.0	90.17	88.99	7,115.4	806.6	4,965.6	5,021.4	0.17	-0.16	0.07
11,953.0	89.93	88.76	7,115.3	808.3	5,054.6	5,110.1	0.37	-0.27	-0.26
12,043.0	90.17	87.99	7,115.3	810.9	5,144.6	5,199.8	0.90	0.27	-0.86
12,133.0	89.83	87.68	7,115.3	814.3	5,234.5	5,289.7	0.51	-0.38	-0.34
12,222.0	89.90	87.74	7,115.5	817.8	5,323.4	5,378.5	0.10	0.08	0.07
12,312.0	90.00	87.11	7,115.6	821.9	5,413.4	5,468.4	0.71	0.11	-0.70
12,401.0	89.73	87.90	7,115.8	825.8	5,502.3	5,557.2	0.94	-0.30	0.89
12,492.0	89.83	87.13	7,116.1	829.7	5,593.2	5,648.1	0.85	0.11	-0.85
12,581.0	90.31	87.31	7,116.0	834.0	5,682.1	5,737.0	0.58	0.54	0.20
12,671.0	89.45	86.85	7,116.2	838.6	5,772.0	5,826.8	1.08	-0.96	-0.51
12,761.0	89.62	85.84	7,116.9	844.3	5,861.8	5,916.8	1.14	0.19	-1.12
12,850.0	89.62	86.33	7,117.5	850.4	5,950.6	6,005.7	0.55	0.00	0.55
12,940.0	89.83	86.75	7,118.0	855.8	6,040.4	6,095.7	0.52	0.23	0.47
13,029.0	90.10	86.96	7,118.0	860.7	6,129.3	6,184.6	0.38	0.30	0.24
13,119.0	90.34	86.93	7,117.7	865.5	6,219.1	6,274.5	0.27	0.27	-0.03
13,208.0	90.31	87.02	7,117.2	870.2	6,308.0	6,363.4	0.11	-0.03	0.10
13,298.0	90.14	85.86	7,116.8	875.8	6,397.8	6,453.3	1.30	-0.19	-1.29
13,387.0	90.34	85.31	7,116.4	882.7	6,486.6	6,542.3	0.66	0.22	-0.62
13,477.0	90.34	85.28	7,115.9	890.0	6,576.3	6,632.3	0.03	0.00	-0.03
13,566.0	90.17	85.92	7,115.5	896.9	6,665.0	6,721.2	0.74	-0.19	0.72
13,656.0	90.21	86.06	7,115.2	903.2	6,754.8	6,811.2	0.16	0.04	0.16
13,746.0	90.31	87.62	7,114.8	908.1	6,844.6	6,901.1	1.74	0.11	1.73
13,836.0	89.97	90.12	7,114.6	909.9	6,934.6	6,990.8	2.80	-0.38	2.78
13,925.0	90.21	91.17	7,114.4	908.9	7,023.6	7,079.3	1.21	0.27	1.18
14,015.0	90.34	90.49	7,114.0	907.6	7,113.6	7,168.7	0.77	0.14	-0.76
14,104.0	90.10	89.17	7,113.7	907.9	7,202.6	7,257.2	1.51	-0.27	-1.48
14,194.0	88.35	88.47	7,114.9	909.7	7,292.6	7,346.9	2.09	-1.94	-0.78
14,284.0	89.83	88.60	7,116.3	912.0	7,382.5	7,436.7	1.65	1.64	0.14
14,373.0	89.07	87.69	7,117.2	914.9	7,471.5	7,525.5	1.33	-0.85	-1.02
14,463.0	90.38	88.24	7,117.6	918.1	7,561.4	7,615.3	1.58	1.46	0.61
14,553.0	89.86	87.29	7,117.4	921.6	7,651.3	7,705.1	1.20	-0.58	-1.06
14,642.0	90.07	88.71	7,117.5	924.7	7,740.3	7,793.9	1.61	0.24	1.60
14,732.0	89.97	88.58	7,117.4	926.8	7,830.2	7,883.7	0.18	-0.11	-0.14
14,822.0	89.69	88.78	7,117.7	928.9	7,920.2	7,973.4	0.38	-0.31	0.22
14,912.0	90.24	85.61	7,117.7	933.3	8,010.1	8,063.3	3.57	0.61	-3.52
15,001.0	90.45	83.43	7,117.2	941.8	8,098.7	8,152.3	2.46	0.24	-2.45
15,091.0	90.72	84.68	7,116.3	951.1	8,188.2	8,242.2	1.42	0.30	1.39
15,181.0	90.48	85.69	7,115.4	958.7	8,277.9	8,332.2	1.15	-0.27	1.12
15,270.0	90.48	86.63	7,114.6	964.6	8,366.7	8,421.2	1.06	0.00	1.06
15,360.0	90.62	86.97	7,113.7	969.7	8,456.5	8,511.1	0.41	0.16	0.38
15,450.0	90.55	87.43	7,112.8	974.1	8,546.4	8,601.0	0.52	-0.08	0.51
15,539.0	89.66	88.28	7,112.7	977.4	8,635.4	8,689.8	1.38	-1.00	0.96
15,629.0	89.59	87.48	7,113.2	980.7	8,725.3	8,779.6	0.89	-0.08	-0.89
15,719.0	89.59	86.19	7,113.9	985.7	8,815.1	8,869.5	1.43	0.00	-1.43
15,809.0	89.24	84.98	7,114.8	992.6	8,904.9	8,959.5	1.40	-0.39	-1.34
15,898.0	89.93	86.49	7,115.5	999.2	8,993.6	9,048.4	1.87	0.78	1.70
15,988.0	89.83	86.45	7,115.6	1,004.8	9,083.4	9,138.4	0.12	-0.11	-0.04
16,078.0	90.24	87.49	7,115.6	1,009.5	9,173.3	9,228.3	1.24	0.46	1.16
16,167.0	90.24	89.52	7,115.2	1,011.9	9,262.3	9,317.0	2.28	0.00	2.28
16,257.0	90.27	90.88	7,114.8	1,011.5	9,352.3	9,406.5	1.51	0.03	1.51
16,346.0	90.55	93.23	7,114.2	1,008.4	9,441.2	9,494.7	2.66	0.31	2.64
16,436.0	91.00	92.57	7,113.0	1,003.8	9,531.1	9,583.7	0.89	0.50	-0.73

Company:	Noble Energy Inc.- Weld County, CO (Grid North)	Local Co-ordinate Reference:	Well Burton K25-67-1HN
Project:	Sec.25-T4N-R66W	TVD Reference:	WELL @ 4791.0ft (PD 829 RKB -16')
Site:	Burton K25-67-1HN Pad Sec.25-T4N-R66W	MD Reference:	WELL @ 4791.0ft (PD 829 RKB -16')
Well:	Burton K25-67-1HN	North Reference:	Grid
Wellbore:	Wellbore #1	Survey Calculation Method:	Minimum Curvature
Design:	Wellbore #1	Database:	Landmark

Survey										
Measured Depth (ft)	Inclination (°)	Azimuth (°)	Vertical Depth (ft)	+N/-S (ft)	+E/-W (ft)	Vertical Section (ft)	Dogleg Rate (°/100ft)	Build Rate (°/100ft)	Turn Rate (°/100ft)	
16,526.0	90.31	91.50	7,111.9	1,000.6	9,621.0	9,672.9	1.41	-0.77	-1.19	
16,615.0	90.34	90.56	7,111.4	999.0	9,710.0	9,761.2	1.06	0.03	-1.06	
16,705.0	90.14	90.85	7,111.1	997.9	9,800.0	9,850.7	0.39	-0.22	0.32	
16,734.0	90.14	90.46	7,111.0	997.6	9,829.0	9,879.5	1.34	0.00	-1.34	
16,778.7	90.14	90.46	7,110.9	997.2	9,873.7	9,923.9	0.00	0.00	0.00	
Burton K25-67-1HN BHL 1556'FNL & 535'FEL, Sec.30										
16,779.0	90.14	90.46	7,110.9	997.2	9,874.0	9,924.2	0.00	0.00	0.00	

Checked By: _____	Approved By: _____	Date: _____
-------------------	--------------------	-------------