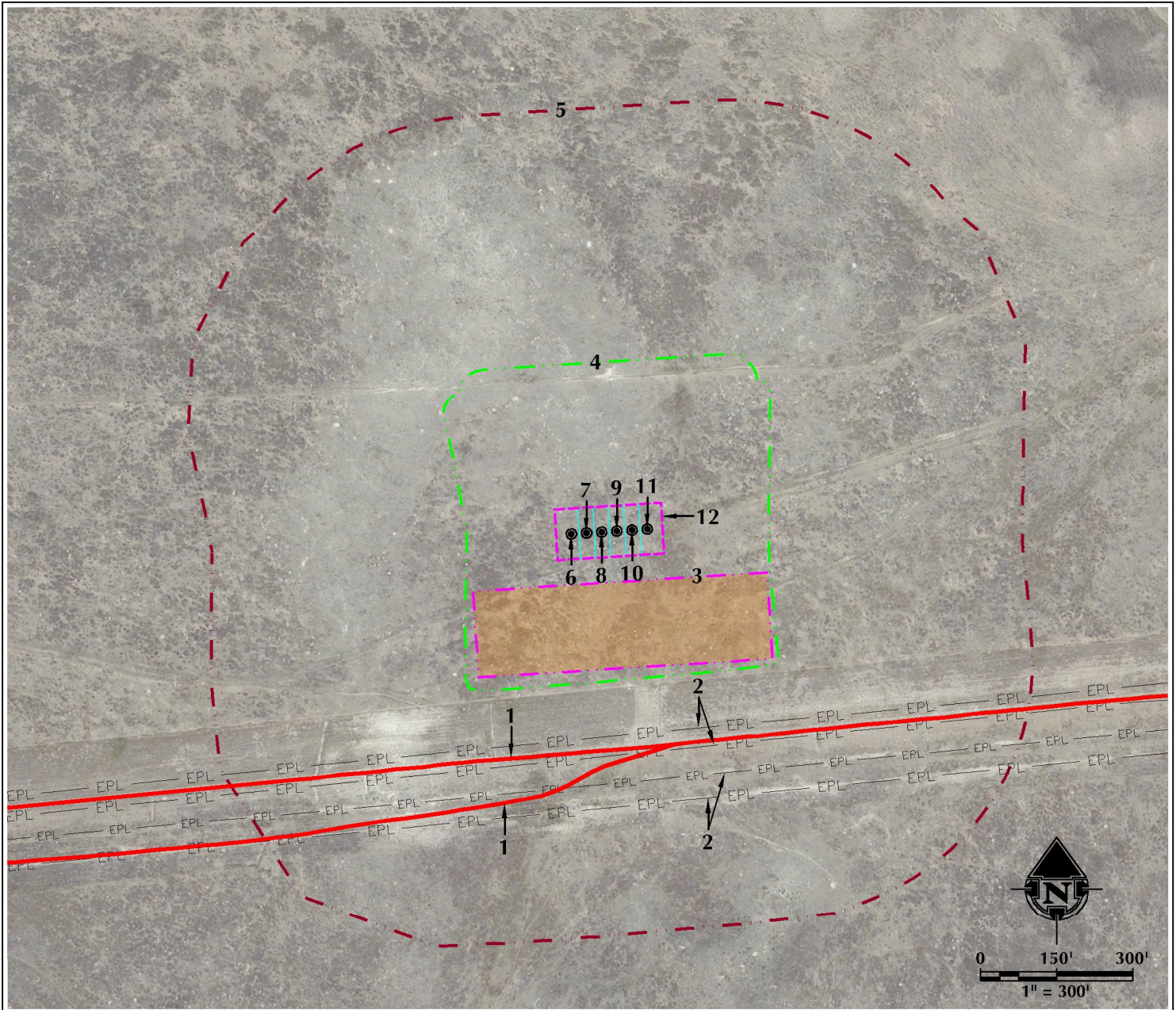


LOCATION DRAWING

RESOLUTION FED 12-63-30-19-2CH

HORIZONTAL MULTI-WELL PAD

NE1/4 NW1/4 SECTION 31, TOWNSHIP 12 NORTH, RANGE 63 WEST, 6TH P.M.



- | | | |
|---|--|---|
| 1. EXISTING PRIVATE ROADS ARE $\pm 430'$ S AND $\pm 461'$ S. | 4. OPERATIONAL DISTURBANCE AREA | 9. PROPOSED WELL: RESOLUTION 12-63-31-6-3NH |
| 2. EXISTING BURIED PIPELINES ARE $\pm 403'$ S, $\pm 442'$ S, $\pm 496'$ S AND $\pm 543'$ S. | 5. 500' BUFFER | 10. PROPOSED WELL: RESOLUTION FED 12-63-30-19-3CH |
| 3. PROPOSED RESOLUTION FED 12-63-30-19-2CH FACILITY PAD IS $\pm 100'$ S | 6. PROPOSED WELL: RESOLUTION FED 12-63-30-19-2CH | 11. PROPOSED WELL: RESOLUTION 12-63-31-6-3CH |
| | 7. PROPOSED WELL: RESOLUTION 12-63-31-6-2CH | 12. PUMP JACK OPERATIONS AREA |
| | 8. PROPOSED WELL: RESOLUTION FED 12-63-30-19-3NH | |

LEGEND

- | | | |
|--------------------|---------------------------|-----------------------------|
| ● EXISTING WELL | --- 500' BUFFER | --- OHP OVERHEAD POWER LINE |
| ● PROPOSED WELL | --- DISTURBANCE AREA | --- UGP BURIED POWER LINE |
| ● WATER WELL | --- PUMP JACK AREA | --- EXISTING FACILITY |
| --- EXISTING FENCE | --- PROPOSED FACILITY | --- EXISTING BUILDINGS |
| --- PUBLIC ROAD | --- EPL EXISTING PIPELINE | --- RESIDENCE/BUILDING UNIT |
| --- PRIVATE ROAD | --- DITCH/CANAL/DRAINAGE | --- POND |

*** REFERENCE LOCATION ***
 ALL MEASUREMENTS ARE MADE FROM
 REFERENCE WELL: RESOLUTION FED 12-63-30-19-2CH
 LAT: 40.972271° LONG: -104.478431° (NAD83)
 EXISTING GROUND ELEVATION = 5425.9'
 WELL FOOTAGES: 229' FNL & 1870' FWL

SURFACE USE: RANGELAND

NEAREST BUILDING UNIT: 5280+

PREPARED FOR:
Anadarko E&P Onshore LLC



609 CONSULTING, LLC
 LOVELAND OFFICE
 1615 Foxtrail Drive, Suite 204
 Loveland, Colorado 80538
 Phone 970-776-4331

SHERIDAN OFFICE
 1095 Saberton Avenue
 Sheridan, Wyoming 82801
 Phone 307-674-0609

DATE SURVEYED: 12/17/14
 DATE: 2/17/15
 DRAFTER: JFE
 REVISED:

DATA SOURCES:
 - AERIAL COURTESY OF ESRI, INC.
 - WATER WELLS COURTESY OF
 COLORADO DIVISION OF WATER
 RESOURCES