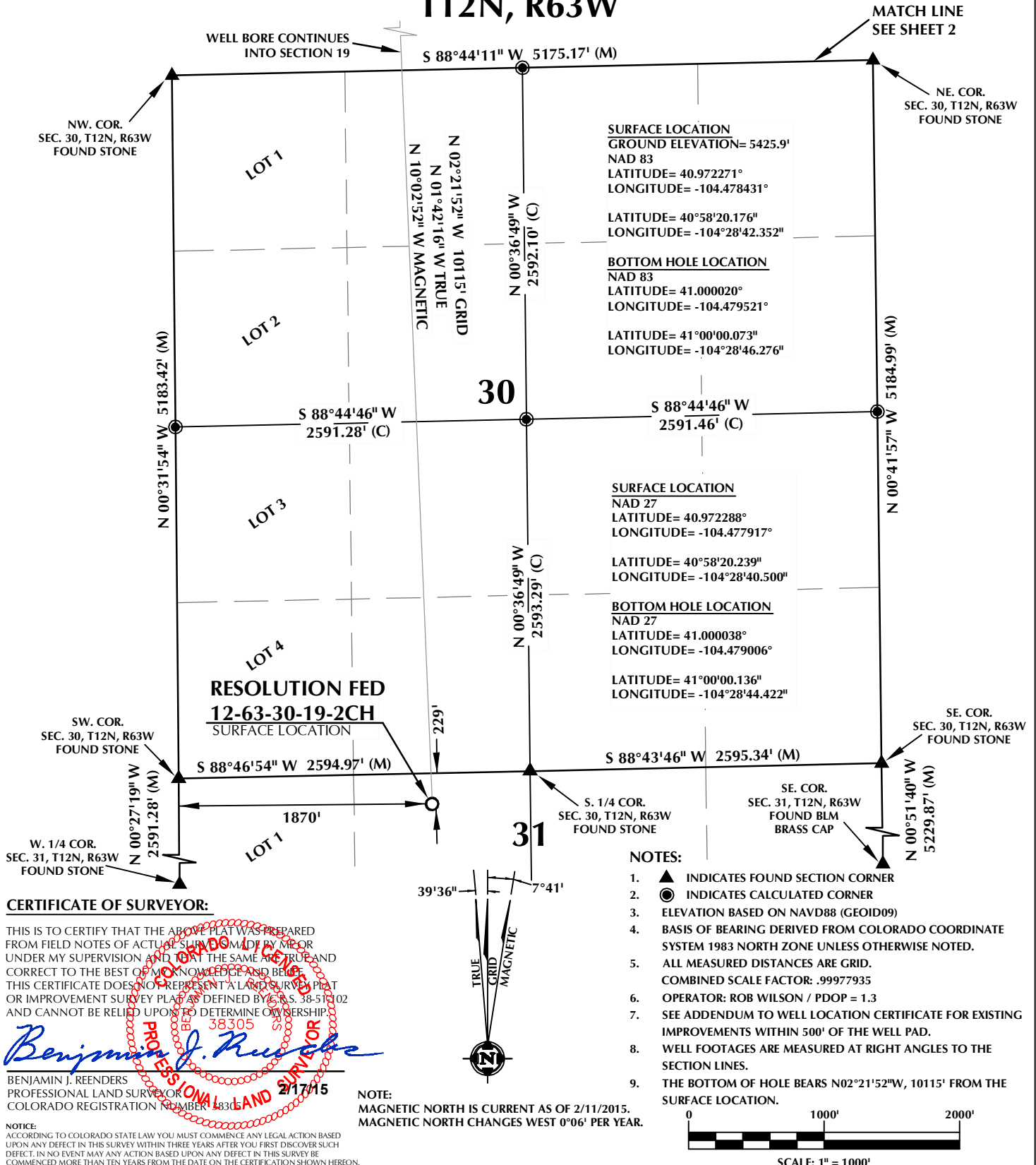


K:\ANADARKO\2014\12-63-30-19-2CH\RESOLUTION FED 12-63-30-19-2CH\RESOLUTION FED 12-63-30-19-2CH.dwg, 2/18/2015 5:39:06 PM, lbn

T12N, R63W



#### CERTIFICATE OF SURVEYOR:

THIS IS TO CERTIFY THAT THE ABOVE PLAT WAS PREPARED FROM FIELD NOTES OF ACTUAL SURVEY MADE BY ME OR UNDER MY SUPERVISION AND THAT THE SAME ARE TRUE AND CORRECT TO THE BEST OF MY KNOWLEDGE AND BELIEF. THIS CERTIFICATE DOES NOT REPRESENT A LAND SURVEY PLAT OR IMPROVEMENT SURVEY PLAT AS DEFINED BY C.S. 38-51-102 AND CANNOT BE RELIED UPON TO DETERMINE OWNERSHIP.

*Benjamin J. Reenders*  
PROFESSIONAL LAND SURVEYOR  
COLORADO REGISTRATION NUMBER 48305

BENJAMIN J. REENDERS  
PROFESSIONAL LAND SURVEYOR  
COLORADO REGISTRATION NUMBER 48305

NOTICE:  
ACCORDING TO COLORADO STATE LAW YOU MUST COMMENCE ANY LEGAL ACTION BASED UPON ANY DEFECT IN THIS SURVEY WITHIN THREE YEARS AFTER YOU FIRST DISCOVER SUCH DEFECT. IN NO EVENT MAY ANY ACTION BASED UPON ANY DEFECT IN THIS SURVEY BE COMMENCED MORE THAN TEN YEARS FROM THE DATE ON THE CERTIFICATION SHOWN HEREON.

#### WELL PAD - RESOLUTION FED 12-63-30-19-2CH

RESOLUTION FED 12-63-30-19-2CH  
WELL LOCATION CERTIFICATE  
229' FNL & 1870' FWL NENW (SURFACE)  
LOCATED IN SECTION 31  
494' FNL & 1545' FWL NENW (BOTTOM)  
LOCATED IN SECTION 19  
T12N, R63W, 6TH P.M.  
WELD COUNTY, COLORADO

Anadarko E&P  
Onshore LLC  
1099 18th Street  
Denver, Colorado 80202



#### CONSULTING, LLC

SHERIDAN OFFICE  
1095 Saberton Avenue  
Sheridan, Wyoming 82801  
Phone 307-674-0609

LOVELAND OFFICE  
1635 Foxtrail Drive, Suite 204  
Loveland, Colorado 80538  
Phone 970-776-4331

DRAFTED BY:	LMO	CHECKED BY:	BJR	SHEET NO:
DATE DRAFTED:	2/17/15	DATE SURVEYED:	12/17/14	1
REVISED:		FILE NAME:	14-52	1 OF 2

# T12N, R63W

NW. COR.  
SEC. 19, T12N, R63W  
FOUND BLM  
BRASS CAP

N. 1/4 COR.  
SEC. 19, T12N, R63W  
FOUND 3 1/2" ALUM. CAP  
L.S. NO. 16154

NE. COR.  
SEC. 19, T12N, R63W  
FOUND BLM  
BRASS CAP

S 88°20'07" W 2481.89' (M) S 88°30'43" W 2482.44' (M)

N 00°30'55" W 2590.11' (M)

LOT 1

LOT 2

LOT 3

LOT 4

W. 1/4 COR.  
SEC. 19, T12N, R63W  
SET ALUM. CAP  
L.S. NO. 38305

SW. COR.  
SEC. 19, T12N, R63W  
FOUND STONE

N 00°31'08" W 2593.53' (M)

S 88°36'10" W 2534.78' (C)

S 88°36'10" W 2535.00' (C)

N 02°21'52" W 10115' GRID  
N 01°42'16" W TRUE  
N 10°02'52" W MAGNETIC

S 88°44'11" W 5175.17' (M)

N 02°50'24" W 5212.27' (M)

SE. COR.  
SEC. 19, T12N, R63W  
FOUND STONE

MATCH LINE  
SEE SHEET 1

**SURFACE LOCATION**  
GROUND ELEVATION= 5425.9'  
NAD 83  
LATITUDE= 40.972271°  
LONGITUDE= -104.478431°

**BOTTOM HOLE LOCATION**  
NAD 83  
LATITUDE= 41.000020°  
LONGITUDE= -104.479521°

**SURFACE LOCATION**  
NAD 27  
LATITUDE= 40.972288°  
LONGITUDE= -104.477917°

**BOTTOM HOLE LOCATION**  
NAD 27  
LATITUDE= 41.000038°  
LONGITUDE= -104.479006°

LATITUDE= 41°00'00.136"  
LONGITUDE= -104°28'44.422"

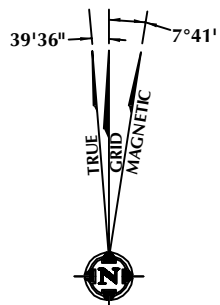
## CERTIFICATE OF SURVEYOR:

THIS IS TO CERTIFY THAT THE ABOVE PLAT WAS PREPARED FROM FIELD NOTES OF ACTUAL SURVEY MADE BY ME OR UNDER MY SUPERVISION AND THAT THE SAME ARE TRUE AND CORRECT TO THE BEST OF MY KNOWLEDGE AND BELIEF. THIS CERTIFICATE DOES NOT REPRESENT A LAND SURVEY PLAT OR IMPROVEMENT SURVEY PLAT AS DEFINED BY C.S. 38-51-102 AND CANNOT BE RELIED UPON TO DETERMINE OWNERSHIP.

*Benjamin J. Reenders*  
PROFESSIONAL LAND SURVEYOR  
38305

BENJAMIN J. REENDERS  
PROFESSIONAL LAND SURVEYOR  
COLORADO REGISTRATION NUMBER 48305 2/17/15

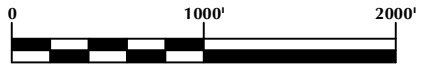
NOTICE:  
ACCORDING TO COLORADO STATE LAW YOU MUST COMMENCE ANY LEGAL ACTION BASED UPON ANY DEFECT IN THIS SURVEY WITHIN THREE YEARS AFTER YOU FIRST DISCOVER SUCH DEFECT. IN NO EVENT MAY ANY ACTION BASED UPON ANY DEFECT IN THIS SURVEY BE COMMENCED MORE THAN TEN YEARS FROM THE DATE ON THE CERTIFICATION SHOWN HEREON.



NOTE:  
MAGNETIC NORTH IS CURRENT AS OF 2/11/2015.  
MAGNETIC NORTH CHANGES WEST 0°06' PER YEAR.

## NOTES:

- ▲ INDICATES FOUND SECTION CORNER
- INDICATES CALCULATED CORNER
- ELEVATION BASED ON NAVD88 (GEOID09)
- BASIS OF BEARING DERIVED FROM COLORADO COORDINATE SYSTEM 1983 NORTH ZONE UNLESS OTHERWISE NOTED.
- ALL MEASURED DISTANCES ARE GRID.  
COMBINED SCALE FACTOR: .99977935
- OPERATOR: ROB WILSON / PDOP = 1.3
- SEE ADDENDUM TO WELL LOCATION CERTIFICATE FOR EXISTING IMPROVEMENTS WITHIN 500' OF THE WELL PAD.
- WELL FOOTAGES ARE MEASURED AT RIGHT ANGLES TO THE SECTION LINES.
- THE BOTTOM OF HOLE BEARS N02°21'52"W, 10115' FROM THE SURFACE LOCATION.



SCALE: 1" = 1000'

## WELL PAD - RESOLUTION FED 12-63-30-19-2CH

RESOLUTION FED 12-63-30-19-2CH  
WELL LOCATION CERTIFICATE  
229' FNL & 1870' FWL NENW (SURFACE)  
LOCATED IN SECTION 31  
494' FNL & 1545' FWL NENW (BOTTOM)  
LOCATED IN SECTION 19  
T12N, R63W, 6TH P.M.  
WELD COUNTY, COLORADO

Anadarko E&P  
Onshore LLC  
1099 18th Street  
Denver, Colorado 80202



## CONSULTING, LLC

SHERIDAN OFFICE  
1095 Saberton Avenue  
Sheridan, Wyoming 82801  
Phone 307-674-0609

LOVELAND OFFICE  
1635 Foxtrail Drive, Suite 204  
Loveland, Colorado 80538  
Phone 970-776-4331

DRAFTED BY:	LMO	CHECKED BY:	BJR	SHEET NO:
DATE DRAFTED:	2/17/15	DATE SURVEYED:	12/17/14	2
REVISED:		FILE NAME:	14-52	2 OF 2