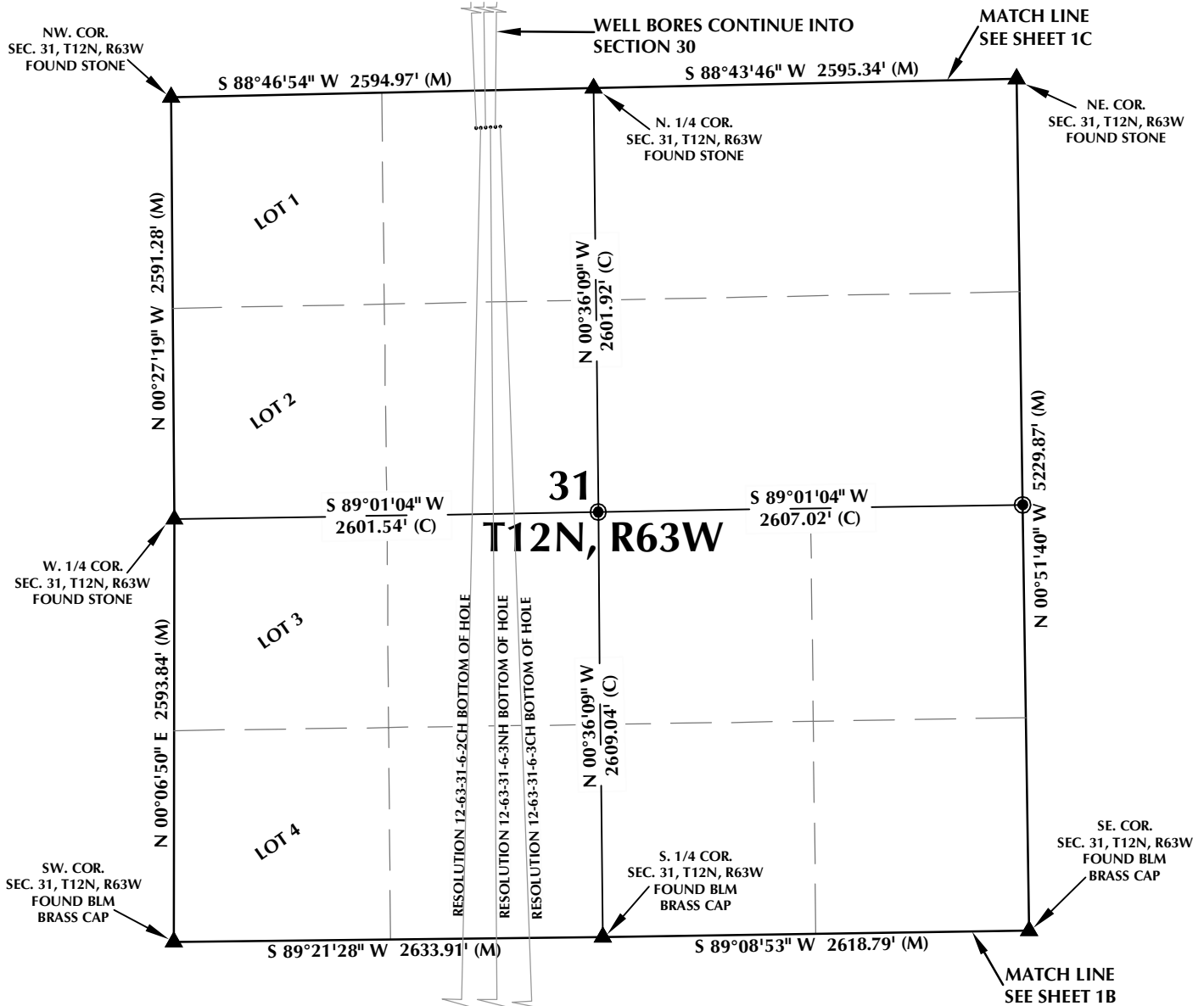


RESOLUTION FED 12-63-30-19-2CH



WELL NOTES:

RESOLUTION FED 12-63-30-19-2CH
SURFACE: 229' FNL, 1870' FWL
BOTTOM HOLE: 494' FNL, 1545' FWL
RESOLUTION 12-63-31-6-2CH
SURFACE: 227' FNL, 1900' FWL
BOTTOM HOLE: 600' FSL, 1620' FWL
RESOLUTION FED 12-63-30-19-3NH
SURFACE: 226' FNL, 1930' FWL
BOTTOM HOLE: 499' FNL, 1860' FWL
RESOLUTION 12-63-31-6-3NH
SURFACE: 225' FNL, 1960' FWL
BOTTOM HOLE: 600' FSL, 1960' FWL
RESOLUTION FED 12-63-30-19-3CH
SURFACE: 224' FNL, 1990' FWL
BOTTOM HOLE: 505' FNL, 2175' FWL
RESOLUTION 12-63-31-6-3CH
SURFACE: 222' FNL, 2020' FWL
BOTTOM HOLE: 600' FSL, 2300' FWL

NOTES:

1. ▲ INDICATES FOUND SECTION CORNER
2. ● INDICATES CALCULATED CORNER
3. BASIS OF BEARING DERIVED FROM COLORADO COORDINATE SYSTEM 1983 NORTH ZONE UNLESS OTHERWISE NOTED.
4. ALL MEASURED DISTANCES ARE GRID.
5. COMBINED SCALE FACTOR: .99977935
6. WELL FOOTAGES ARE MEASURED AT RIGHT ANGLES TO THE SECTION LINES.

WELL PAD - RESOLUTION FED 12-63-30-19-2CH

MULTI-WELL PLAN

RESOLUTION FED 12-63-30-19-2CH, RESOLUTION 12-63-31-6-2CH,
RESOLUTION FED 12-63-30-19-3NH, RESOLUTION 12-63-31-6-3NH,
RESOLUTION FED 12-63-30-19-3CH & RESOLUTION 12-63-31-6-3CH
LOCATED IN SECTIONS 19, 30 & 31, T12N, R63W, 6TH P.M. &
LOCATED IN SECTION 6, T11N, R63W, 6TH P.M.
WELD COUNTY, COLORADO

**Anadarko E&P
Onshore LLC**
1099 18th Street
Denver, Colorado 80202



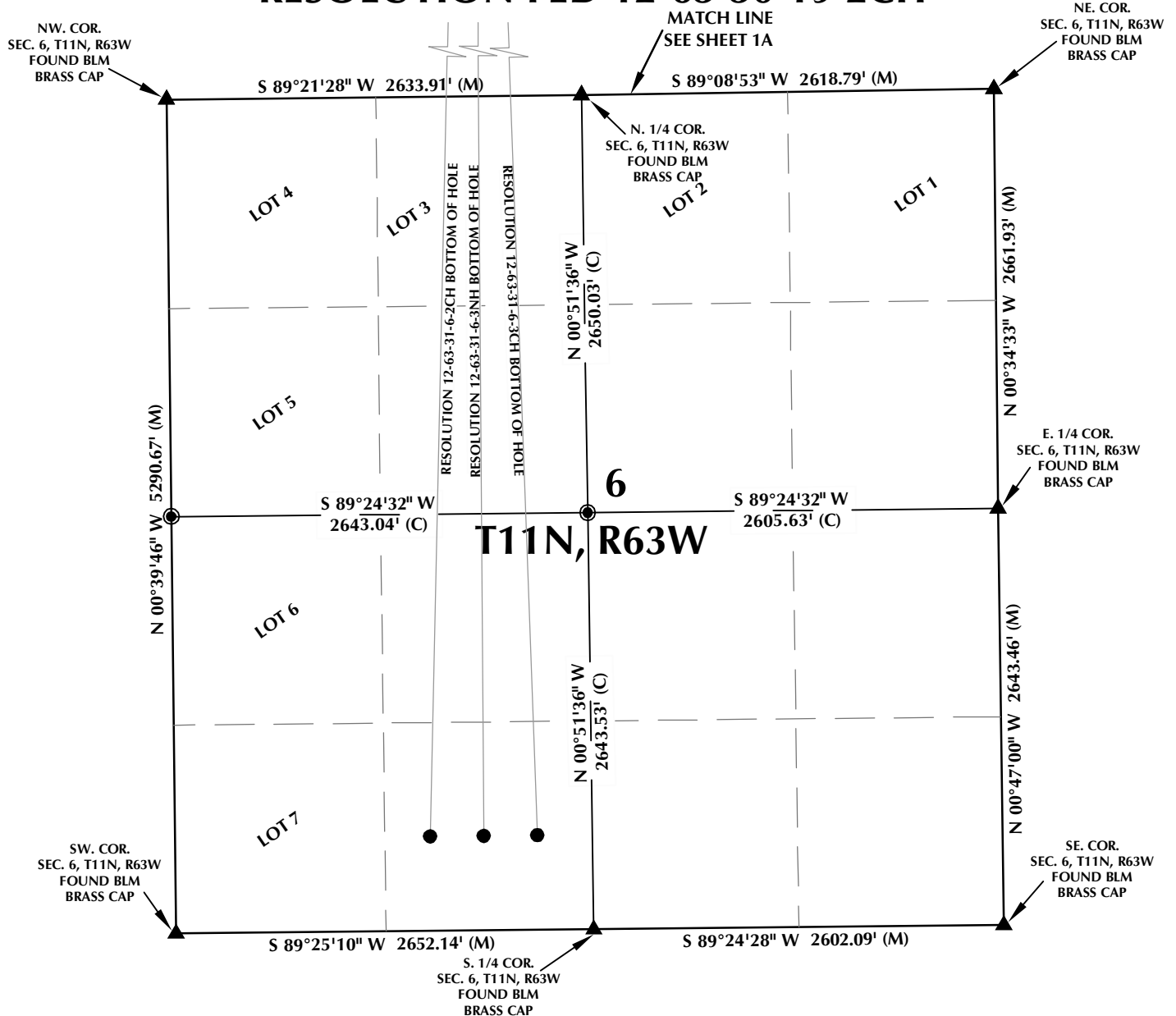
CONSULTING, LLC

SHERIDAN OFFICE
1095 Saberton Avenue
Sheridan, Wyoming 82801
Phone 307-674-0609

LOVELAND OFFICE
1635 Foxtrail Drive, Suite 204
Loveland, Colorado 80538
Phone 970-776-4331

DRAFTED BY:	LMO	CHECKED BY:	BJR	SHEET NO:
DATE DRAFTED:	2/17/15	DATE SURVEYED:	12/17/14	1A
REVISED:		FILE NAME:	14-52	1A OF 1

RESOLUTION FED 12-63-30-19-2CH

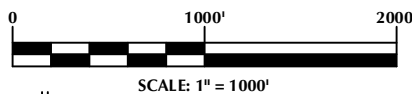


WELL NOTES:

RESOLUTION FED 12-63-30-19-2CH
SURFACE: 229' FNL, 1870' FWL
BOTTOM HOLE: 494' FNL, 1545' FWL
RESOLUTION 12-63-31-6-2CH
SURFACE: 227' FNL, 1900' FWL
BOTTOM HOLE: 600' FSL, 1620' FWL
RESOLUTION FED 12-63-30-19-3NH
SURFACE: 226' FNL, 1930' FWL
BOTTOM HOLE: 499' FNL, 1860' FWL
RESOLUTION 12-63-31-6-3NH
SURFACE: 225' FNL, 1960' FWL
BOTTOM HOLE: 600' FSL, 1960' FWL
RESOLUTION FED 12-63-30-19-3CH
SURFACE: 224' FNL, 1990' FWL
BOTTOM HOLE: 505' FNL, 2175' FWL
RESOLUTION 12-63-31-6-3CH
SURFACE: 222' FNL, 2020' FWL
BOTTOM HOLE: 600' FSL, 2300' FWL

NOTES:

1. ▲ INDICATES FOUND SECTION CORNER
2. ● INDICATES CALCULATED CORNER
3. BASIS OF BEARING DERIVED FROM COLORADO COORDINATE SYSTEM 1983 NORTH ZONE UNLESS OTHERWISE NOTED.
4. ALL MEASURED DISTANCES ARE GRID.
5. COMBINED SCALE FACTOR: .99977935
6. WELL FOOTAGES ARE MEASURED AT RIGHT ANGLES TO THE SECTION LINES.



WELL PAD - RESOLUTION FED 12-63-30-19-2CH

MULTI-Well PLAN

RESOLUTION FED 12-63-30-19-2CH, RESOLUTION 12-63-31-6-2CH,
RESOLUTION FED 12-63-30-19-3NH, RESOLUTION 12-63-31-6-3NH,
RESOLUTION FED 12-63-30-19-3CH & RESOLUTION 12-63-31-6-3CH
LOCATED IN SECTIONS 19, 30 & 31, T12N, R63W, 6TH P.M. &
LOCATED IN SECTION 6, T11N, R63W, 6TH P.M.
WELD COUNTY, COLORADO

**Anadarko E&P
Onshore LLC**
1099 18th Street
Denver, Colorado 80202



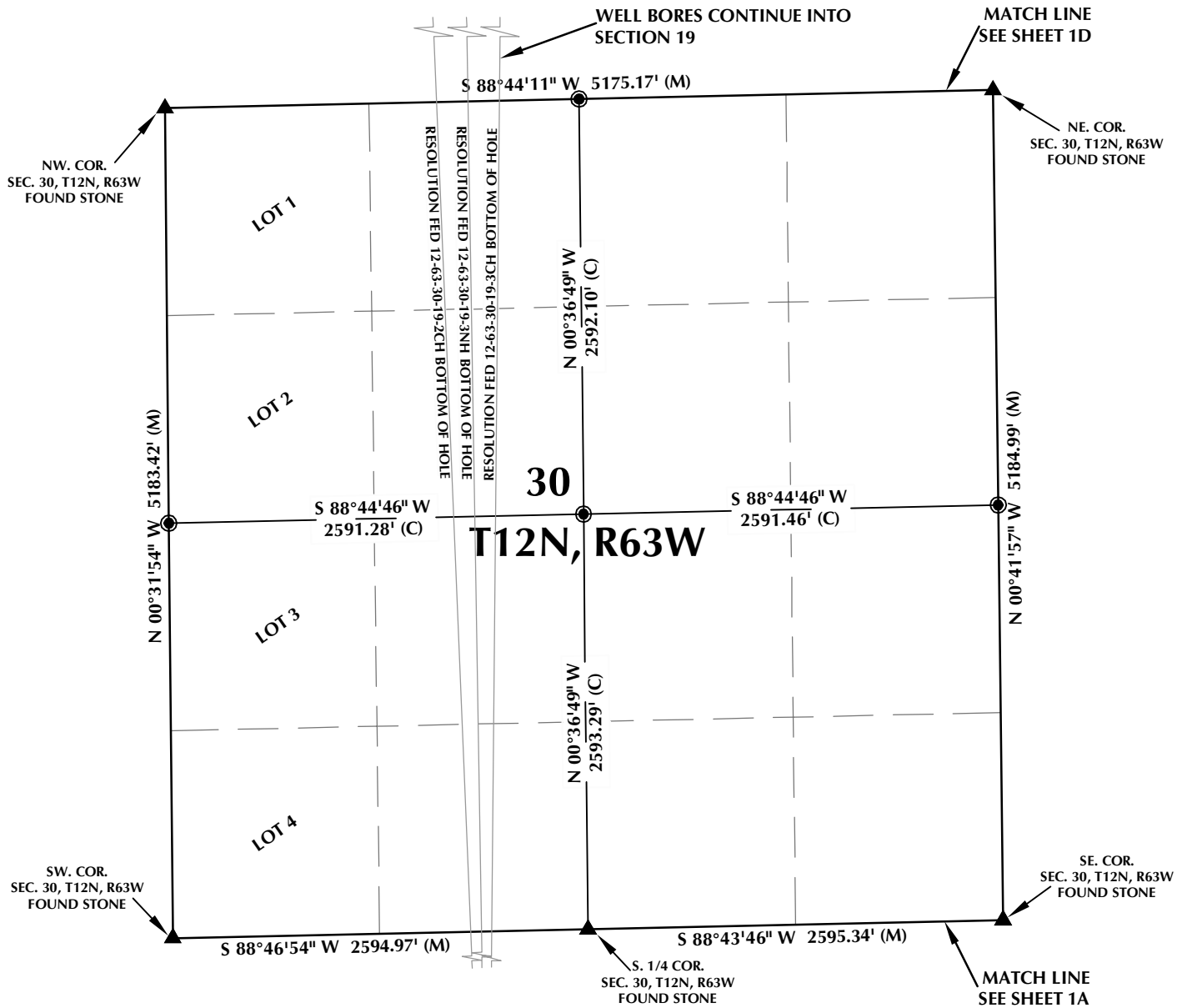
CONSULTING, LLC

SHERIDAN OFFICE
1095 Saberton Avenue
Sheridan, Wyoming 82801
Phone 307-674-0609

LOVELAND OFFICE
1635 Foxtrail Drive, Suite 204
Loveland, Colorado 80538
Phone 970-776-4331

DRAFTED BY:	LMO	CHECKED BY:	BJR	SHEET NO:
DATE DRAFTED:	2/17/15	DATE SURVEYED:	12/17/14	1B
REVISED:		FILE NAME:	14-52	1B OF 1

RESOLUTION FED 12-63-30-19-2CH

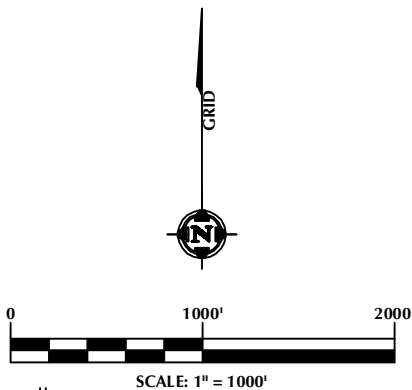


WELL NOTES:

RESOLUTION FED 12-63-30-19-2CH
 SURFACE: 229' FNL, 1870' FWL
 BOTTOM HOLE: 494' FNL, 1545' FWL
 RESOLUTION 12-63-31-6-2CH
 SURFACE: 227' FNL, 1900' FWL
 BOTTOM HOLE: 600' FSL, 1620' FWL
 RESOLUTION FED 12-63-30-19-3NH
 SURFACE: 226' FNL, 1930' FWL
 BOTTOM HOLE: 499' FNL, 1860' FWL
 RESOLUTION 12-63-31-6-3NH
 SURFACE: 225' FNL, 1960' FWL
 BOTTOM HOLE: 600' FSL, 1960' FWL
 RESOLUTION FED 12-63-30-19-3CH
 SURFACE: 224' FNL, 1990' FWL
 BOTTOM HOLE: 505' FNL, 2175' FWL
 RESOLUTION 12-63-31-6-3CH
 SURFACE: 222' FNL, 2020' FWL
 BOTTOM HOLE: 600' FSL, 2300' FWL

NOTES:

- ▲ INDICATES FOUND SECTION CORNER
- INDICATES CALCULATED CORNER
- BASIS OF BEARING DERIVED FROM COLORADO COORDINATE SYSTEM 1983 NORTH ZONE UNLESS OTHERWISE NOTED.
- ALL MEASURED DISTANCES ARE GRID.
- COMBINED SCALE FACTOR: .99977935
- WELL FOOTAGES ARE MEASURED AT RIGHT ANGLES TO THE SECTION LINES.



WELL PAD - RESOLUTION FED 12-63-30-19-2CH

MULTI-Well PLAN

RESOLUTION FED 12-63-30-19-2CH, RESOLUTION 12-63-31-6-2CH,
 RESOLUTION FED 12-63-30-19-3NH, RESOLUTION 12-63-31-6-3NH,
 RESOLUTION FED 12-63-30-19-3CH & RESOLUTION 12-63-31-6-3CH
 LOCATED IN SECTIONS 19, 30 & 31, T12N, R63W, 6TH P.M. &
 LOCATED IN SECTION 6, T11N, R63W, 6TH P.M.
 WELD COUNTY, COLORADO

**Anadarko E&P
 Onshore LLC**
 1099 18th Street
 Denver, Colorado 80202



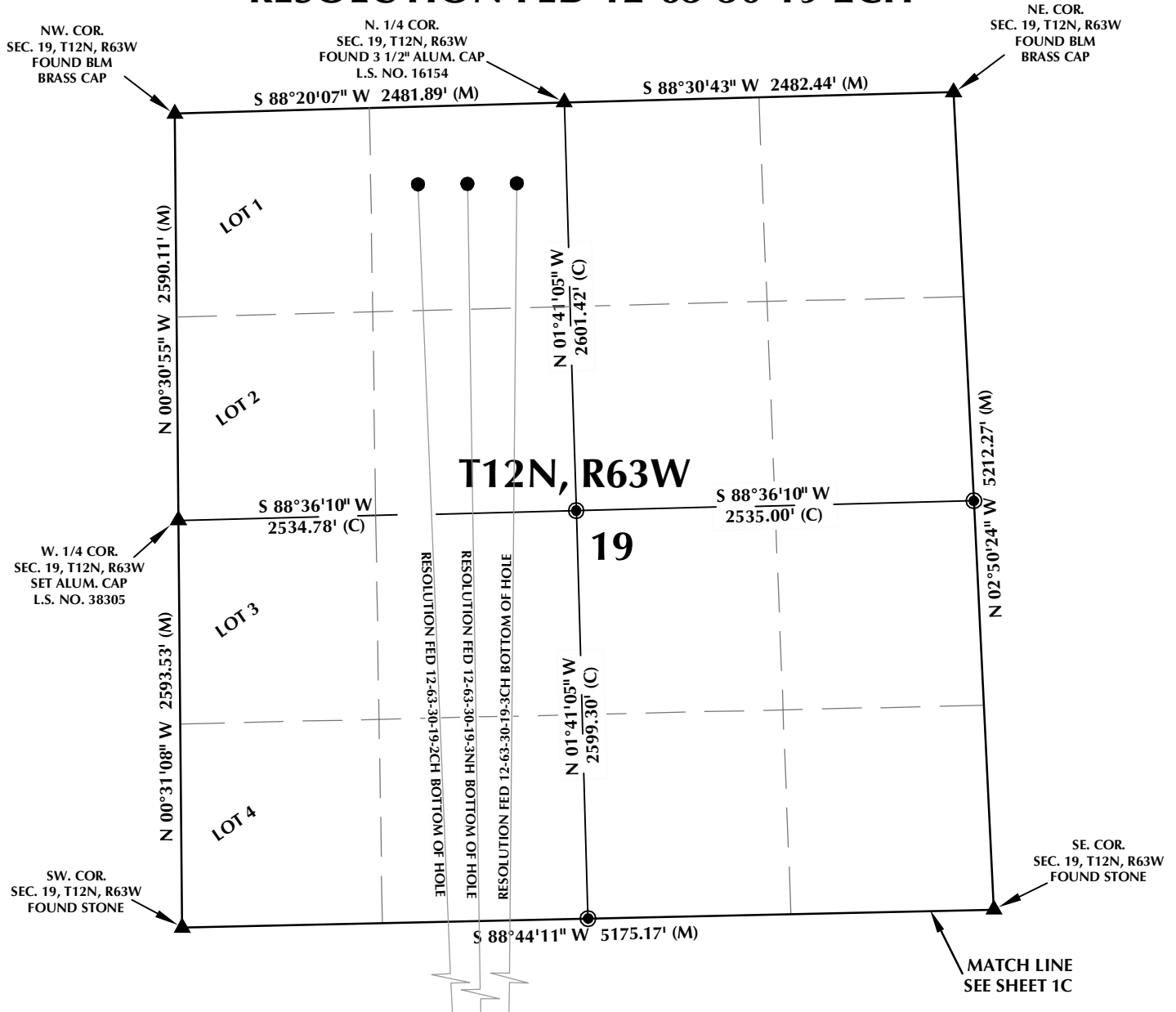
CONSULTING, LLC

SHERIDAN OFFICE
 1095 Saberton Avenue
 Sheridan, Wyoming 82801
 Phone 307-674-0609

LOVELAND OFFICE
 1635 Foxtrail Drive, Suite 204
 Loveland, Colorado 80538
 Phone 970-776-4331

DRAFTED BY:	LMO	CHECKED BY:	BJR	SHEET NO:
DATE DRAFTED:	2/17/15	DATE SURVEYED:	12/17/14	1C
REVISED:		FILE NAME:	14-52	1C OF 1

RESOLUTION FED 12-63-30-19-2CH

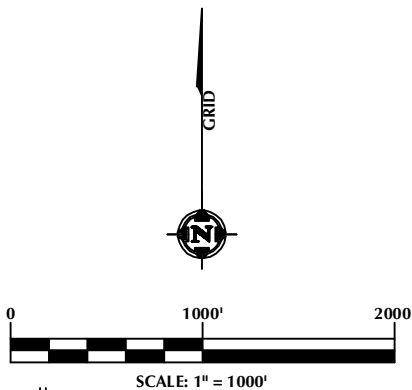


WELL NOTES:

RESOLUTION FED 12-63-30-19-2CH
SURFACE: 229' FNL, 1870' FWL
BOTTOM HOLE: 494' FNL, 1545' FWL
RESOLUTION 12-63-31-6-2CH
SURFACE: 227' FNL, 1900' FWL
BOTTOM HOLE: 600' FSL, 1620' FWL
RESOLUTION FED 12-63-30-19-3NH
SURFACE: 226' FNL, 1930' FWL
BOTTOM HOLE: 499' FNL, 1860' FWL
RESOLUTION 12-63-31-6-3NH
SURFACE: 225' FNL, 1960' FWL
BOTTOM HOLE: 600' FSL, 1960' FWL
RESOLUTION FED 12-63-30-19-3CH
SURFACE: 224' FNL, 1990' FWL
BOTTOM HOLE: 505' FNL, 2175' FWL
RESOLUTION 12-63-31-6-3CH
SURFACE: 222' FNL, 2020' FWL
BOTTOM HOLE: 600' FSL, 2300' FWL

NOTES:

- ▲ INDICATES FOUND SECTION CORNER
- INDICATES CALCULATED CORNER
- BASIS OF BEARING DERIVED FROM COLORADO COORDINATE SYSTEM 1983 NORTH ZONE UNLESS OTHERWISE NOTED.
- ALL MEASURED DISTANCES ARE GRID.
- COMBINED SCALE FACTOR: .99977935
- WELL FOOTAGES ARE MEASURED AT RIGHT ANGLES TO THE SECTION LINES.



WELL PAD - RESOLUTION FED 12-63-30-19-2CH

MULTI-WELL PLAN

RESOLUTION FED 12-63-30-19-2CH, RESOLUTION 12-63-31-6-2CH,
RESOLUTION FED 12-63-30-19-3NH, RESOLUTION 12-63-31-6-3NH,
RESOLUTION FED 12-63-30-19-3CH & RESOLUTION 12-63-31-6-3CH
LOCATED IN SECTIONS 19, 30 & 31, T12N, R63W, 6TH P.M. &
LOCATED IN SECTION 6, T11N, R63W, 6TH P.M.
WELD COUNTY, COLORADO

**Anadarko E&P
Onshore LLC**
1099 18th Street
Denver, Colorado 80202



CONSULTING, LLC

SHERIDAN OFFICE
1095 Saberton Avenue
Sheridan, Wyoming 82801
Phone 307-674-0609

LOVELAND OFFICE
1635 Foxtrail Drive, Suite 204
Loveland, Colorado 80538
Phone 970-776-4331

DRAFTED BY:	LMO	CHECKED BY:	BJR	SHEET NO:
DATE DRAFTED:	2/17/15	DATE SURVEYED:	12/17/14	1D
REVISED:		FILE NAME:	14-52	1D OF 1