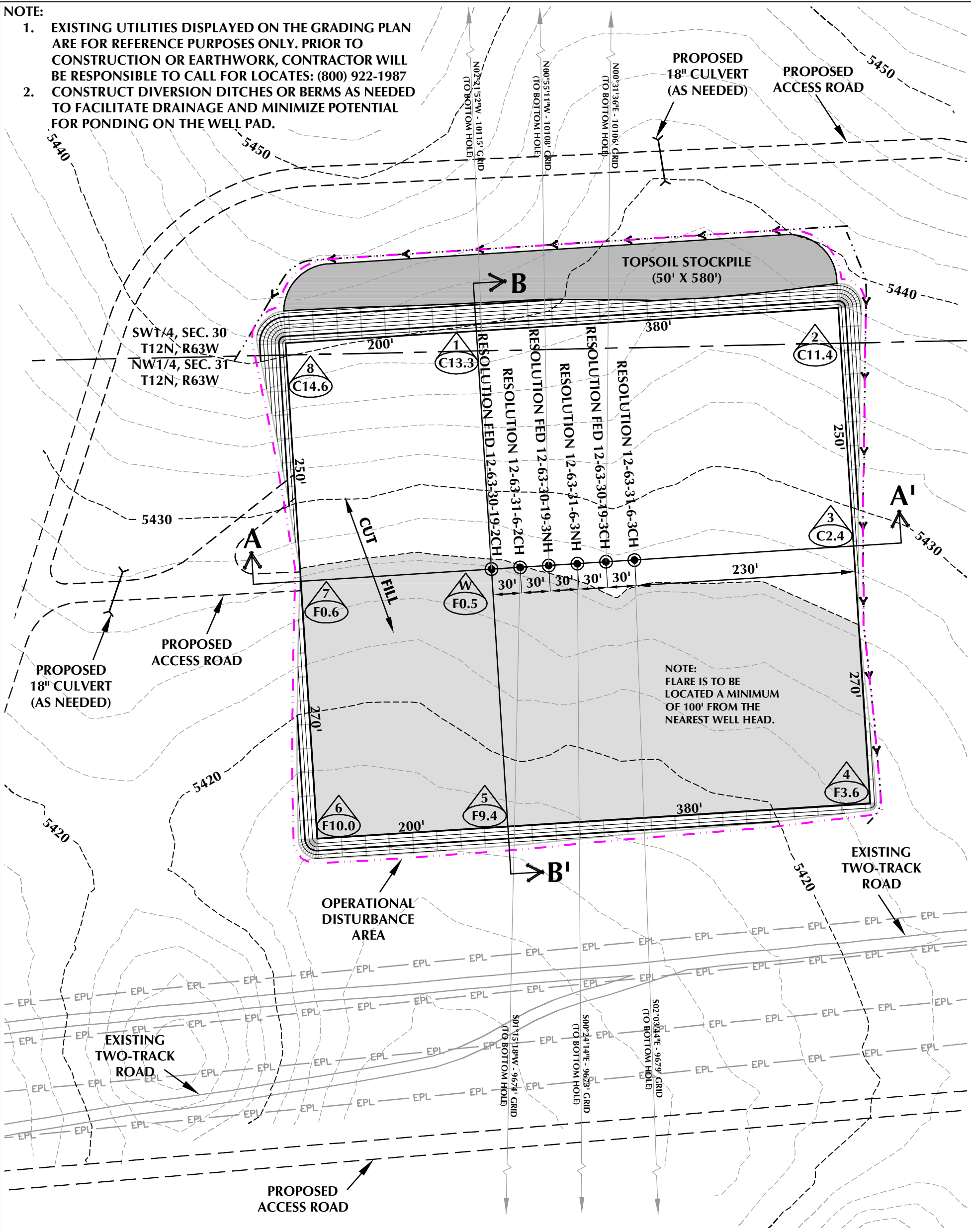


- NOTE:
- EXISTING UTILITIES DISPLAYED ON THE GRADING PLAN ARE FOR REFERENCE PURPOSES ONLY. PRIOR TO CONSTRUCTION OR EARTHWORK, CONTRACTOR WILL BE RESPONSIBLE TO CALL FOR LOCATES: (800) 922-1987
 - CONSTRUCT DIVERSION DITCHES OR BERMS AS NEEDED TO FACILITATE DRAINAGE AND MINIMIZE POTENTIAL FOR PONDING ON THE WELL PAD.



WELL PAD - RESOLUTION FED 12-63-30-19-2CH DESIGN SUMMARY

WELL PAD QUANTITIES AND DESIGN PARAMETERS

EXISTING GRADE @ CENTER OF WELL PAD = 5425.9'
FINISHED GRADE ELEVATION = 5426.4'
CUT SLOPES = 2:1
FILL SLOPES = 2:1
SHRINKAGE FACTOR = 1.15
SWELL FACTOR = 1.00
GRADED WELL PAD SURFACE AREA = 6.92 ACRES
TOTAL WELL PAD AREA = 7.79 ACRES
TOTAL DISTURBANCE AREA = 8.76 ACRES

WELL PAD QUANTITIES

TOTAL CUT FOR WELL PAD = 33,510 C.Y.
TOTAL FILL FOR WELL PAD = 33,510 C.Y.
TOPSOIL @ 6" DEPTH = 6,283 C.Y.
EXCESS MATERIAL = 0 C.Y.

WELL PAD LEGEND

- EXISTING WELL LOCATION
- PROPOSED WELL LOCATION
- EXISTING CONTOURS (2' INTERVAL)
- PROPOSED CONTOURS (2' INTERVAL)
- EPL EXISTING PIPELINE
- PPL PROPOSED PIPELINE
- EXISTING FENCE
- DIVERSION DITCH AND/OR BERM



HORIZONTAL 0 50' 100' 1" = 100'

2' CONTOURS

SCALE: 1"=100' DATE: 2/13/15 SHEET NO:

REVISED: 1 1 OF 2

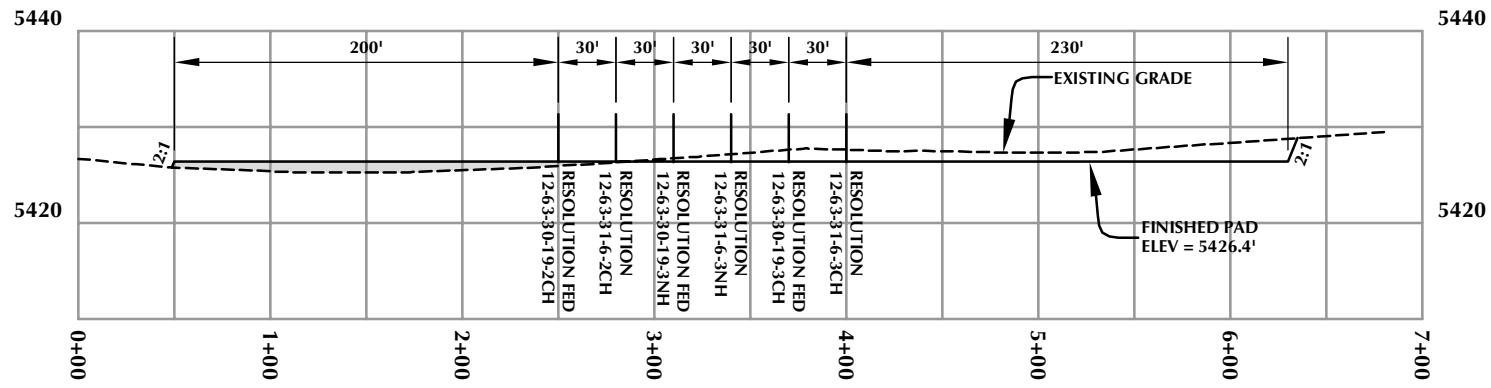
WELL PAD - RESOLUTION FED 12-63-30-19-2CH

WELL PAD - LOCATION LAYOUT
RESOLUTION FED 12-63-30-19-2CH, RESOLUTION 12-63-31-6-2CH,
RESOLUTION FED 12-63-30-19-3NH, RESOLUTION 12-63-31-6-3NH,
RESOLUTION FED 12-63-30-19-3CH & RESOLUTION 12-63-31-6-3CH
LOCATED IN SECTION 31, T12N, R63W, 6TH P.M.
WELD COUNTY, COLORADO

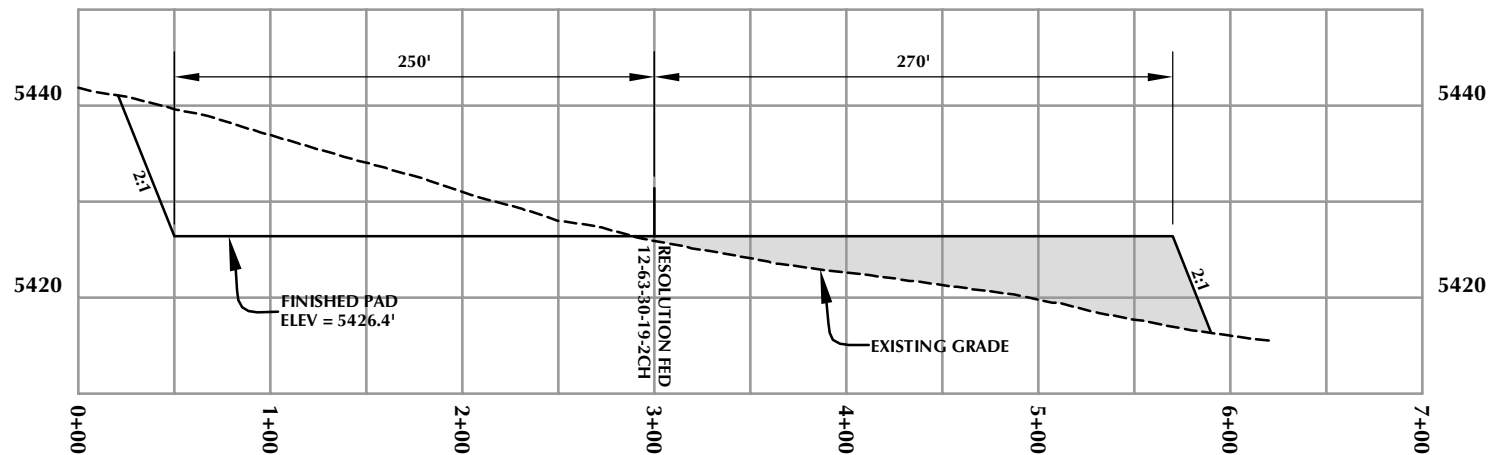
Anadarko E&P
Onshore LLC
1099 18th Street
Denver, Colorado 80202



LOVELAND OFFICE
1635 Foxtrail Drive, Suite 204
Loveland, Colorado 80538
Phone 970-776-4331
SHERIDAN OFFICE
1095 Saberton Avenue
Sheridan, Wyoming 82801
Phone 307-674-0609



CROSS SECTION A-A'



CROSS SECTION B-B'

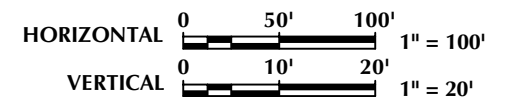
WELL PAD - RESOLUTION FED 12-63-30-19-2CH

WELL PAD - CROSS SECTIONS
 RESOLUTION FED 12-63-30-19-2CH, RESOLUTION 12-63-31-6-2CH,
 RESOLUTION FED 12-63-30-19-3NH, RESOLUTION 12-63-31-6-3NH,
 RESOLUTION FED 12-63-30-19-3CH & RESOLUTION 12-63-31-6-3CH
 LOCATED IN SECTION 31, T12N, R63W, 6TH P.M.
 WELD COUNTY, COLORADO

**Anadarko E&P
 Onshore LLC**
 1099 18th Street
 Denver, Colorado 80202



LOVELAND OFFICE
 1635 Foxtrail Drive, Suite 204
 Loveland, Colorado 80538
 Phone 970-776-4331
SHERIDAN OFFICE
 1095 Saberton Avenue
 Sheridan, Wyoming 82801
 Phone 307-674-0609



SCALE: 1"=100'	DATE: 2/13/15	SHEET NO:
REVISED:		2 2 OF 2