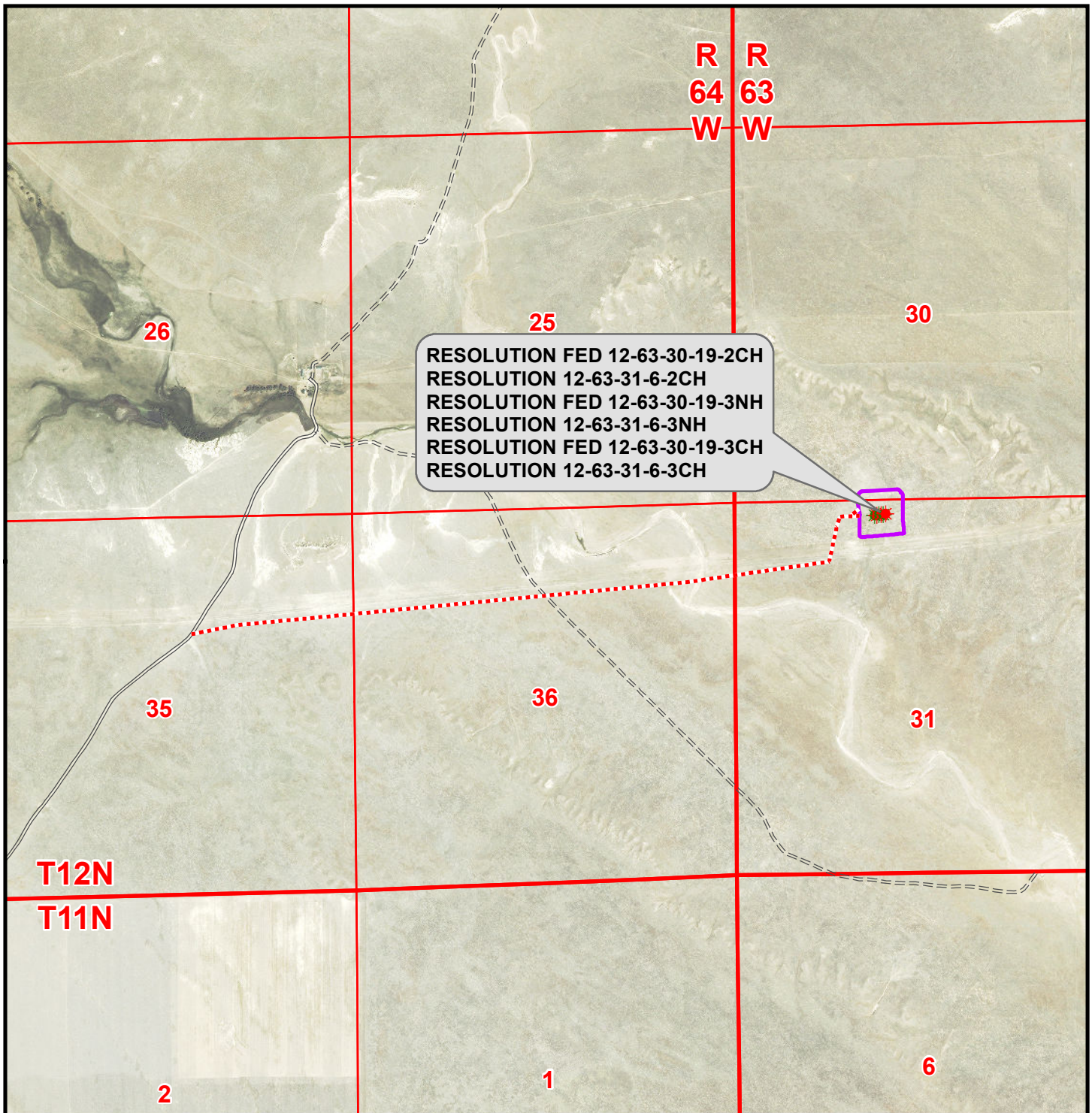


K:\ANADARKO\2014\2014\_e2\_RESOLUTION\_PROSPECT\_WELLS\_COIGIS\Maps\_ABCDI\Resolution 12-63-31-6\ResolutionFed 12-63-30-19-2CH\ResolutionFed 12-63-30-19-2CH Access.mxd 2/17/2015 1:51:37 PM



### Legend

- Well - Fed - Proposed   Disturbance Area   Road - Primitive - Existing   Road - County - Existing  
 Well - Fee - Proposed   Access Road - Proposed   Road - Improved - Existing   Road - Highway - Existing

#### WELL PAD - RESOLUTION FED 12-63-30-19-2CH

ACCESS ROAD MAP  
RESOLUTION FED 12-63-30-19-2CH,  
RESOLUTION 12-63-31-6-2CH,  
RESOLUTION FED 12-63-30-19-3NH,  
RESOLUTION 12-63-31-6-3NH,  
RESOLUTION FED 12-63-30-19-3CH &  
RESOLUTION 12-63-31-6-3CH  
LOCATED IN SECTION 31  
T12N, R63W, 6th P.M.  
WELD COUNTY, COLORADO

**Anadarko E&P  
Onshore LLC**

1099 18th Street  
Denver, CO 80202



**CONSULTING, LLC**

SHERIDAN OFFICE  
1095 Saberton Avenue  
Sheridan, Wyoming 82801  
Phone 307-674-0609

LOVELAND OFFICE  
1635 Foxtail Drive, Suite 204  
Loveland, Colorado 80538  
Phone 970-776-4331



SCALE: 1" = 2,000ft

NAD83 CO-Nft

DRAWN: JELO

DATE: 12 Feb 2015

REVISED:

DATE: