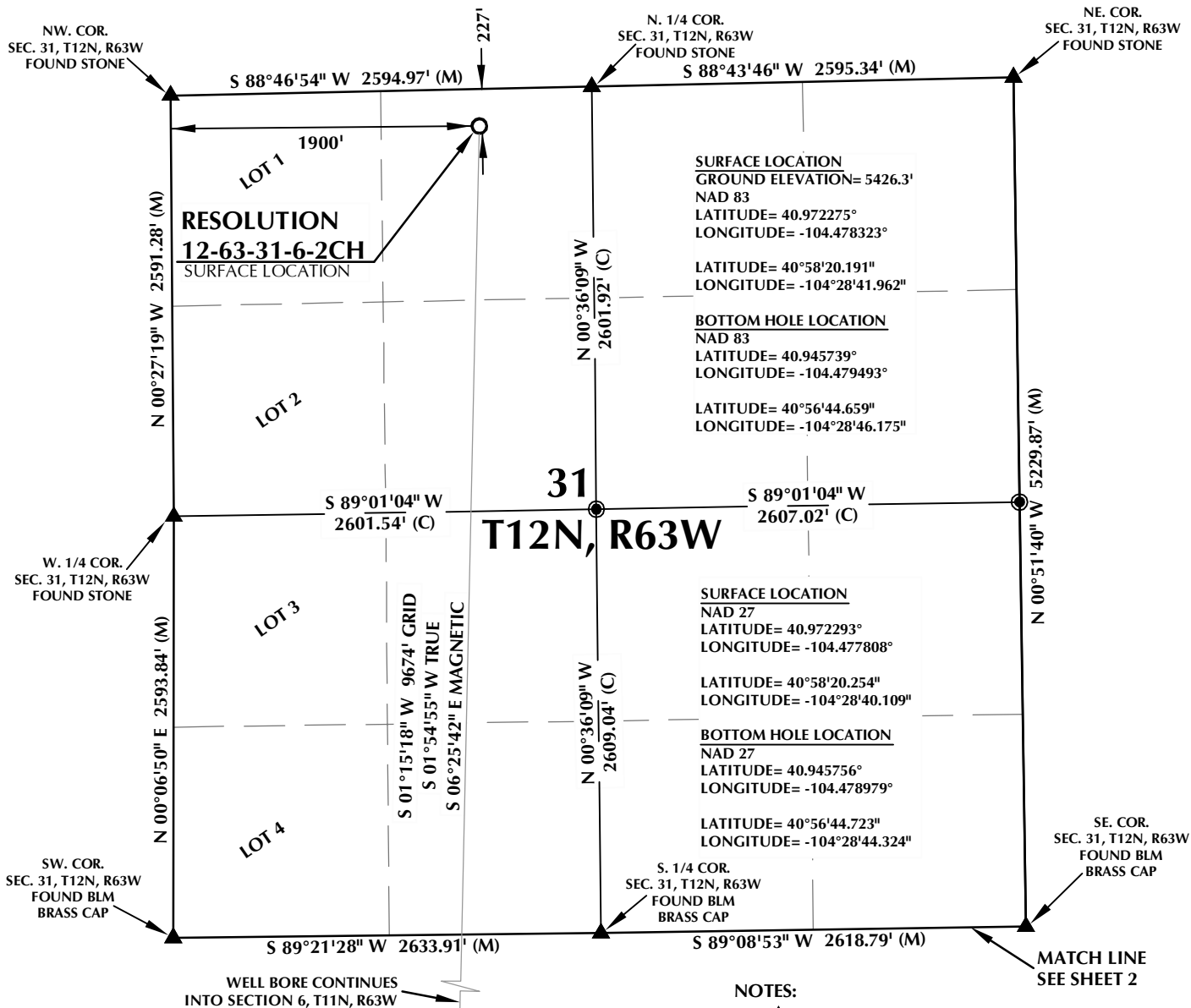


K:\ANADARKO\2014\12-63-30-19-2CH\RESOLUTION FED 12-63-30-19-2CH.dwg, 2/13/2015 1:50:39 PM, lso



CERTIFICATE OF SURVEYOR:

THIS IS TO CERTIFY THAT THE ABOVE PLAT WAS PREPARED FROM FIELD NOTES OF ACTUAL SURVEY MADE BY ME OR UNDER MY SUPERVISION AND THAT THE SAME ARE TRUE AND CORRECT TO THE BEST OF MY KNOWLEDGE AND BELIEF. THIS CERTIFICATE DOES NOT REPRESENT A LAND SURVEY PLAT OR IMPROVEMENT SURVEY PLAT AS DEFINED BY C.S. 38-51-102 AND CANNOT BE RELIED UPON TO DETERMINE OWNERSHIP.

Benjamin J. Reenders
PROFESSIONAL LAND SURVEYOR
COLORADO REGISTRATION NUMBER 48305

BENJAMIN J. REENDERS
PROFESSIONAL LAND SURVEYOR
COLORADO REGISTRATION NUMBER 48305

NOTICE:
ACCORDING TO COLORADO STATE LAW YOU MUST COMMENCE ANY LEGAL ACTION BASED UPON ANY DEFECT IN THIS SURVEY WITHIN THREE YEARS AFTER YOU FIRST DISCOVER SUCH DEFECT. IN NO EVENT MAY ANY ACTION BASED UPON ANY DEFECT IN THIS SURVEY BE COMMENCED MORE THAN TEN YEARS FROM THE DATE ON THE CERTIFICATION SHOWN HEREON.

WELL PAD - RESOLUTION FED 12-63-30-19-2CH

RESOLUTION 12-63-31-6-2CH
WELL LOCATION CERTIFICATE
227' FNL & 1900' FWL NENW (SURFACE)
LOCATED IN SECTION 31
T12N, R63W, 6TH P.M.
600' FSL & 1620' FWL SESW (BOTTOM)
LOCATED IN SECTION 6
T11N, R63W, 6TH P.M.
WELD COUNTY, COLORADO

**Anadarko E&P
Onshore LLC**
1099 18th Street
Denver, Colorado 80202

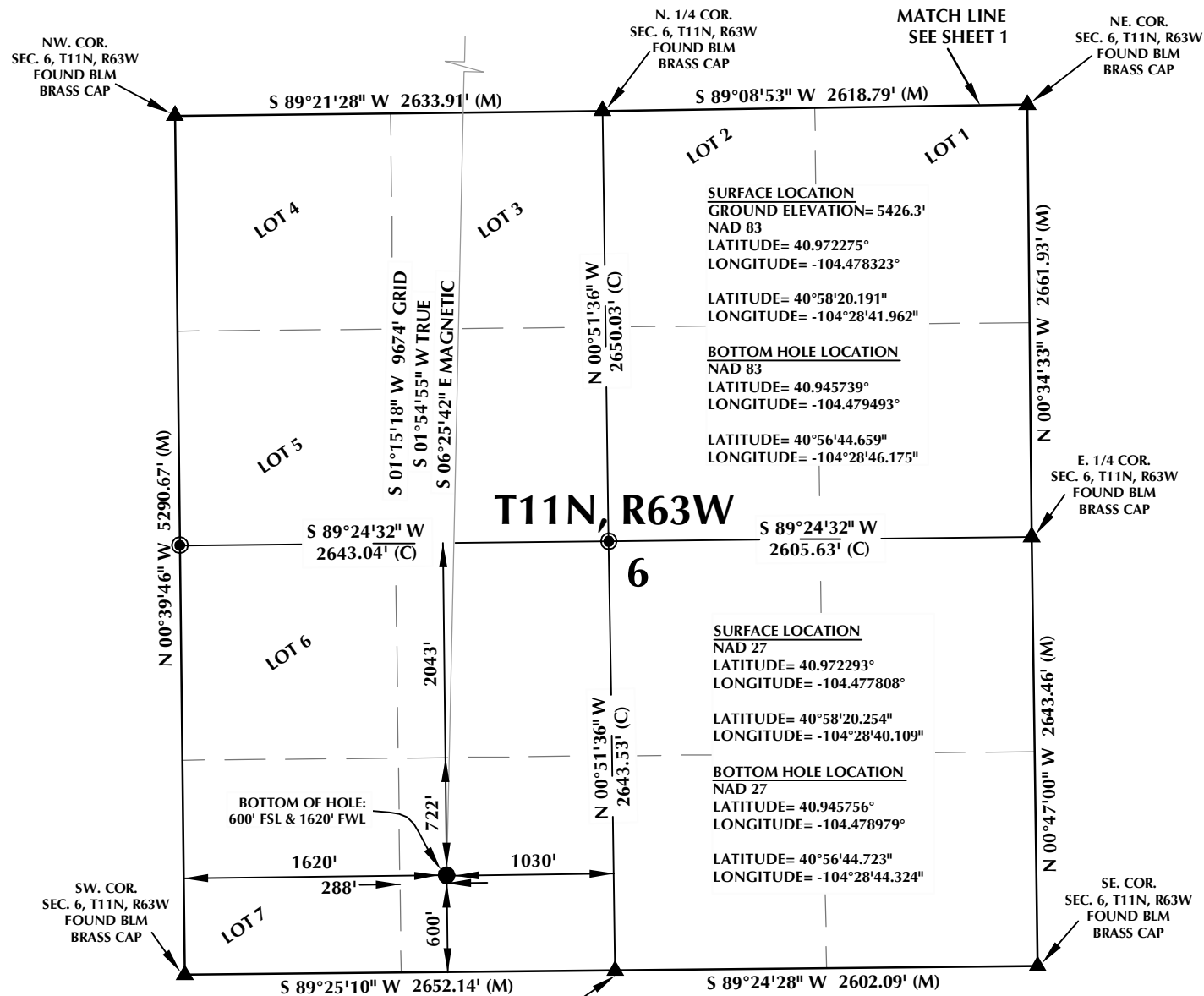


CONSULTING, LLC

SHERIDAN OFFICE
1095 Saberton Avenue
Sheridan, Wyoming 82801
Phone 307-674-0609



LOVELAND OFFICE
1635 Foxtrail Drive, Suite 204
Loveland, Colorado 80538
Phone 970-776-4331

DRAFTED BY:	LMO	CHECKED BY:	BJR	SHEET NO:
DATE DRAFTED:	2/17/15	DATE SURVEYED:	12/17/14	1
REVISED:		FILE NAME:	14-52	1 OF 2



THIS IS TO CERTIFY THAT THE ABOVE PLAT WAS PREPARED FROM FIELD NOTES OF ACTUAL SURVEY MADE BY ME OR UNDER MY SUPERVISION AND THAT THE SAME ARE TRUE AND CORRECT TO THE BEST OF MY KNOWLEDGE AND BELIEF. THIS CERTIFICATE DOES NOT REPRESENT A LAND SURVEY PLAT OR IMPROVEMENT SURVEY PLAT AS DEFINED BY G.S. 38-51.02 AND CANNOT BE RELIED UPON TO DETERMINE OWNERSHIP.

NOTICE: ACCORDING TO COLORADO STATE LAW YOU MUST COMMENCE ANY LEGAL ACTION BASED UPON ANY DEFECT IN THIS SURVEY WITHIN THREE YEARS AFTER YOU FIRST DISCOVER SUCH DEFECT. IN NO EVENT MAY ANY ACTION BASED UPON ANY DEFECT IN THIS SURVEY BE COMMENCED MORE THAN TEN YEARS FROM THE DATE ON THE CERTIFICATION SHOWN HEREON.

1.  INDICATES FOUND SECTION CORNER
2.  INDICATES CALCULATED CORNER
3. ELEVATION BASED ON NAVD88 (GEOID09)
4. BASIS OF BEARING DERIVED FROM COLORADO COORDINATE SYSTEM 1983 NORTH ZONE UNLESS OTHERWISE NOTED.
5. ALL MEASURED DISTANCES ARE GRID.
COMBINED SCALE FACTOR: .99977935
6. OPERATOR: ROB WILSON/ PDOP = 1.3
7. SEE ADDENDUM TO WELL LOCATION CERTIFICATE FOR EXISTING IMPROVEMENTS WITHIN 500' OF THE WELL PAD.
8. WELL FOOTAGES ARE MEASURED AT RIGHT ANGLES TO THE SECTION LINES.
9. THE BOTTOM OF HOLE BEARS S01°15'18"W, 9674' FROM THE SURFACE LOCATION.

RESOLUTION 12-63-31-6-2CH
WELL LOCATION CERTIFICATE
227' FNL & 1900' FWL NENW (SURFACE)
LOCATED IN SECTION 31
T12N, R63W, 6TH P.M.
600' FSL & 1620' FWL SEW (BOTTOM)
LOCATED IN SECTION 6
T11N, R63W, 6TH P.M.
WELD COUNTY, COLORADO



CONSULTING, LLC

DRAFTED BY: LMO	CHECKED BY: BJR	SHEET NO: 2 2 OF 2
DATE DRAFTED: 2/17/15	DATE SURVEYED: 12/17/14	
REVISED:	FILE NAME: 14-52	