

PROCEED IN A WESTERLY DIRECTION FROM HEREFORD COLORADO ALONG COUNTY ROAD 136 APPROXIMATELY 4.6 MILES TO THE JUNCTION OF THIS ROAD AND COUNTY ROAD 71 TO THE NORTH; TURN RIGHT AND PROCEED IN A NORTHERLY DIRECTION APPROXIMATELY 0.1 MILES TO THE JUNCTION OF THIS ROAD AND AN EXISTING ROAD TO THE WEST; TURN LEFT AND PROCEED IN A WESTERLY DIRECTION APPROXIMATELY 285' TO THE EXISTING LOCATION.

TOTAL DISTANCE FROM HEREFORD, COLORADO TO THE EXISTING LOCATION IS APPROXIMATELY 4.8 MILES

**EOG RESOURCES, INC.**

**FOX CREEK 26 SESE  
SECTION 26, T12N, R63W, 6th P.M.  
SE 1/4 SE 1/4**



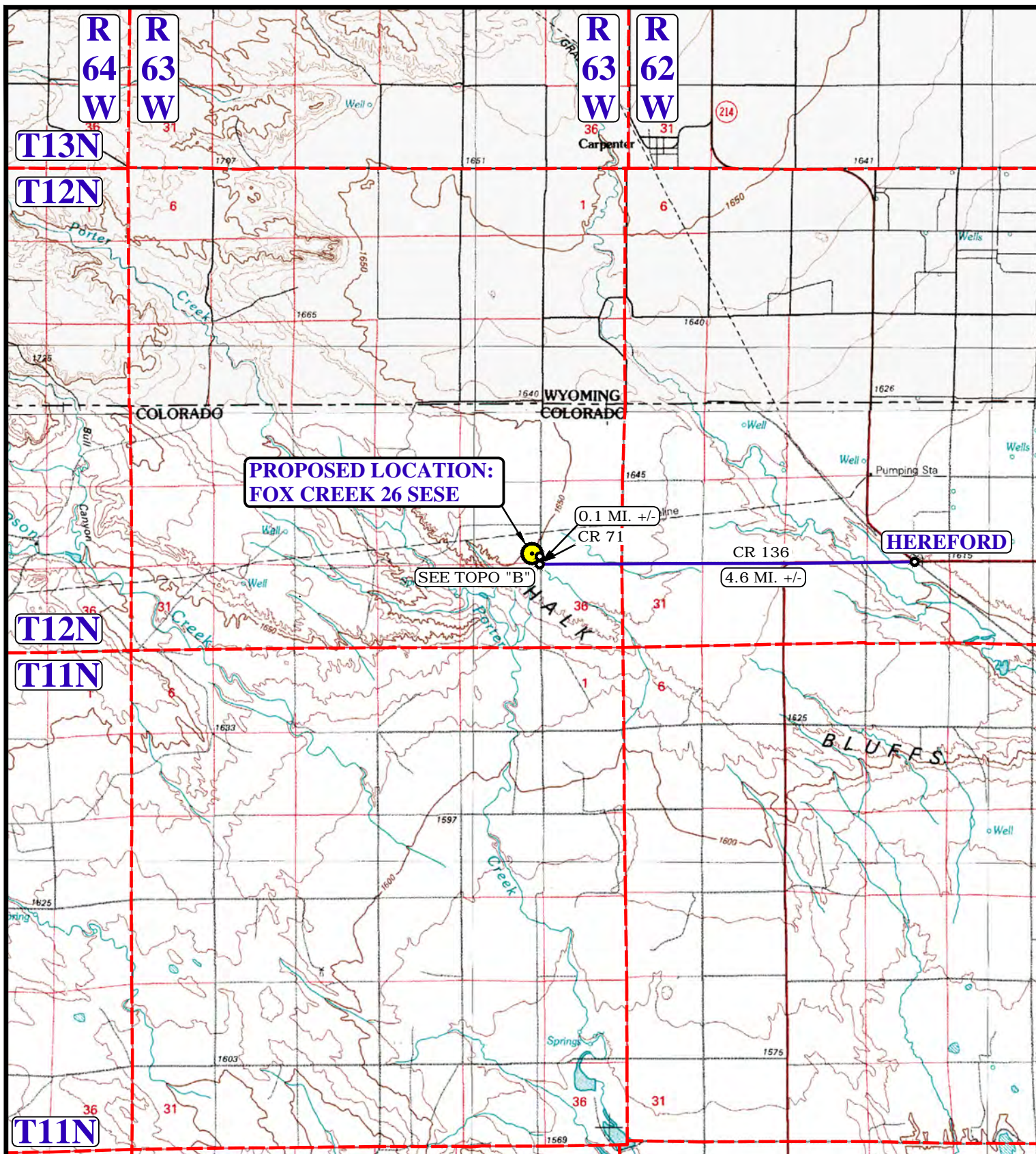
**UELS, LLC**  
Corporate Office \* 85 South 200 East  
Vernal, UT 84078 \* (435) 789-1017

DRAWN BY: J.D.J.

DATE DRAWN: 11-13-14

REVISED: 00-00-00

**ROAD DESCRIPTION**



**LEGEND:**

PROPOSED LOCATION

**EOG RESOURCES, INC.**

**FOX CREEK 26 SESE  
SECTION 26, T12N, R63W, 6th P.M.  
SE 1/4 SE 1/4**



**UELS, LLC**  
Corporate Office \* 85 South 200 East  
Vernal, UT 84078 \* (435) 789-1017



DRAWN BY: J.D.J.

DATE DRAWN: 11-13-14

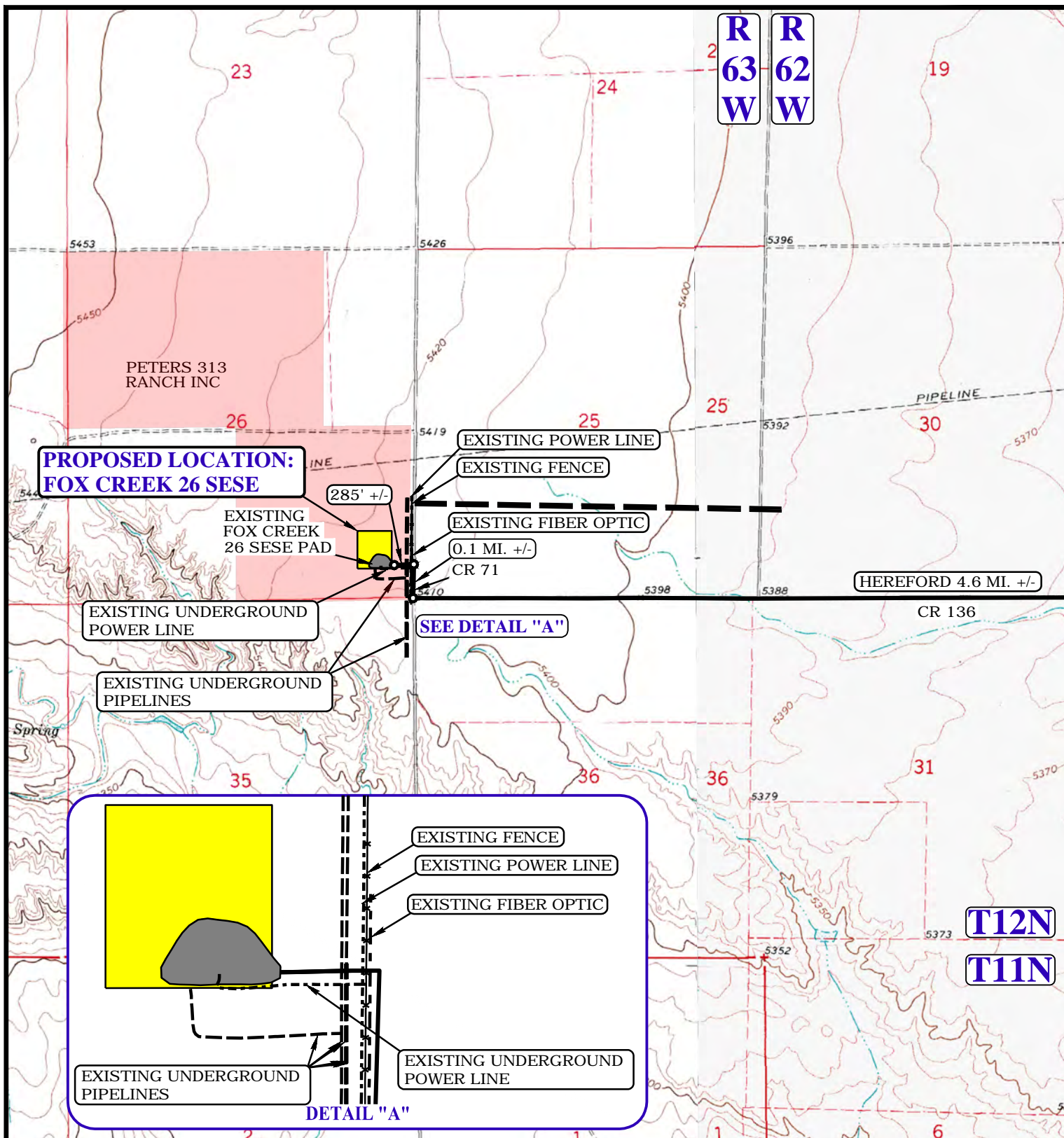
SCALE: 1:100,000

REVISED: 00-00-00

**ACCESS ROAD MAP**

**TOPO A**





NOTE: PARCEL DATA SHOWN HAS BEEN OBTAINED FROM VARIOUS SOURCES AND SHOULD BE USED FOR MAPPING, GRAPHIC AND PLANNING PURPOSES ONLY. NO WARRANTY IS MADE BY UTAH ENGINEERING AND LAND SURVEYING (UELS) FOR ACCURACY OF THE PARCEL DATA.

#### LEGEND:

——— EXISTING ROAD  
 - - - - - EXISTING POWER LINE  
 - - - - - EXISTING PIPELINE  
 \* \* \* \* \* EXISTING FENCE  
 - - - - - EXISTING FIBER OPTIC

**EOG RESOURCES, INC.**

**FOX CREEK 26 SESE**  
**SECTION 26, T12N, R63W, 6th P.M.**  
**SE 1/4 SE 1/4**

DRAWN BY: J.D.J.

DATE DRAWN: 11-13-14

SCALE: 1" = 2000'

REVISED: 00-00-00

**ACCESS ROAD MAP**

**TOPO B**



**UELS, LLC**  
 Corporate Office \* 85 South 200 East  
 Vernal, UT 84078 \* (435) 789-1017