

- NOTES:**
- Flare Stack is to be located a min. of 100' from the wellhead.
  - Contours shown at 2' intervals.
  - Underground utilities shown on this sheet are for visualization purposes only, actual locations to be determined prior to construction.

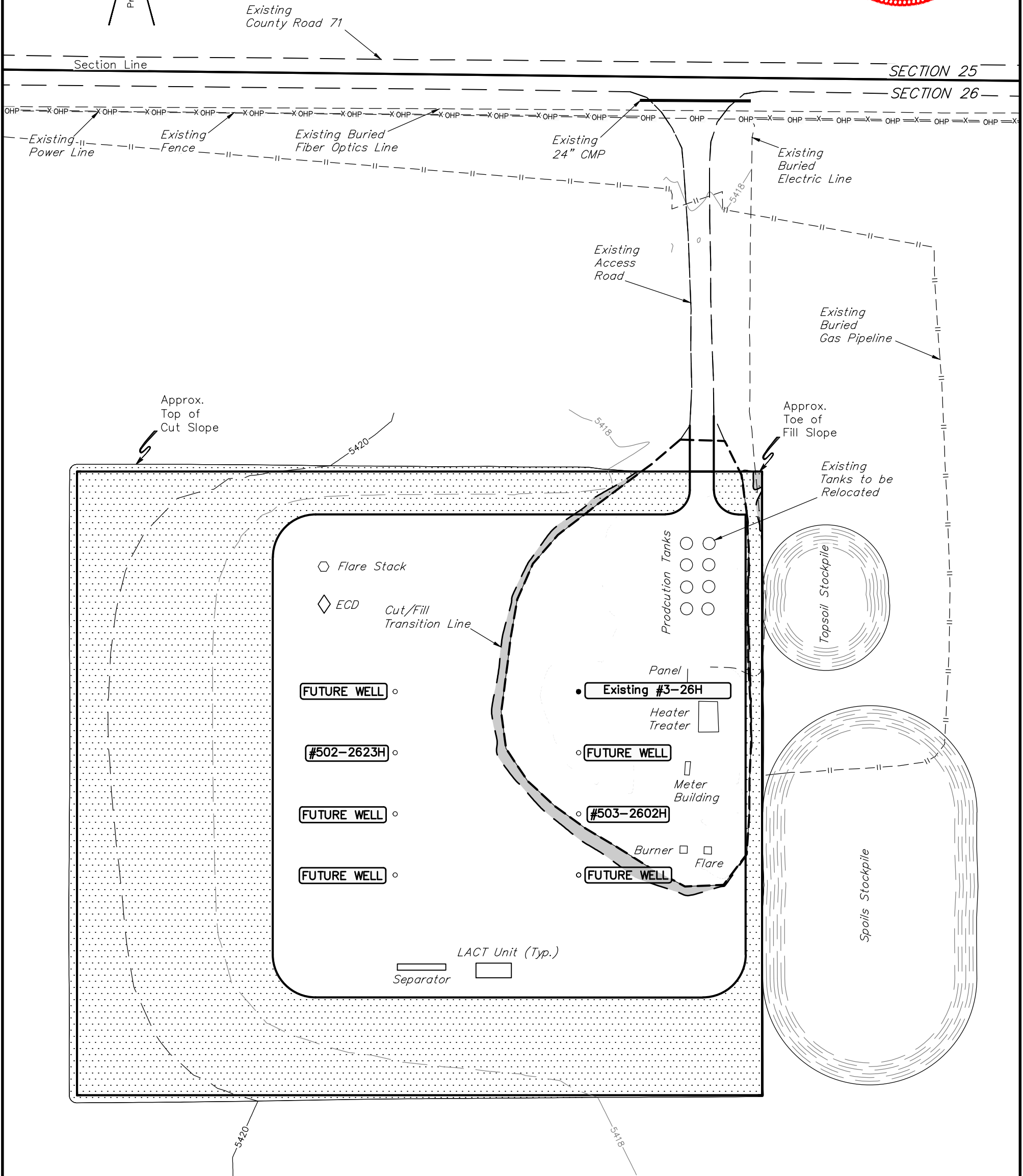
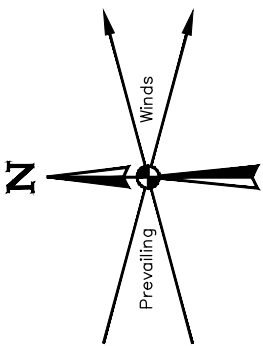
**EOG RESOURCES, INC.**

**FOX CREEK 26 SESE**  
**SECTION 26, T12N, R63W, 6th P.M.**  
**SE 1/4 SE 1/4**



**UELS, LLC**  
Corporate Office \* 85 South 200 East  
Vernal, UT 84078 \* (435) 789-1017

DRAWN BY: J.P.	DATE DRAWN: 11-10-14
SCALE: 1" = 80'	REVISED: 00-00-00
<b>TYPICAL RIG LAYOUT</b>	<b>FIGURE #3</b>



LEGEND:  
Reclaimed Area



APPROXIMATE UN-RECLAIMED ACREAGE = ±3.507 ACRES

- NOTES:
- Contours shown at 2' intervals.
  - Underground utilities shown on this sheet are for visualization purposes only, actual locations to be determined prior to construction.

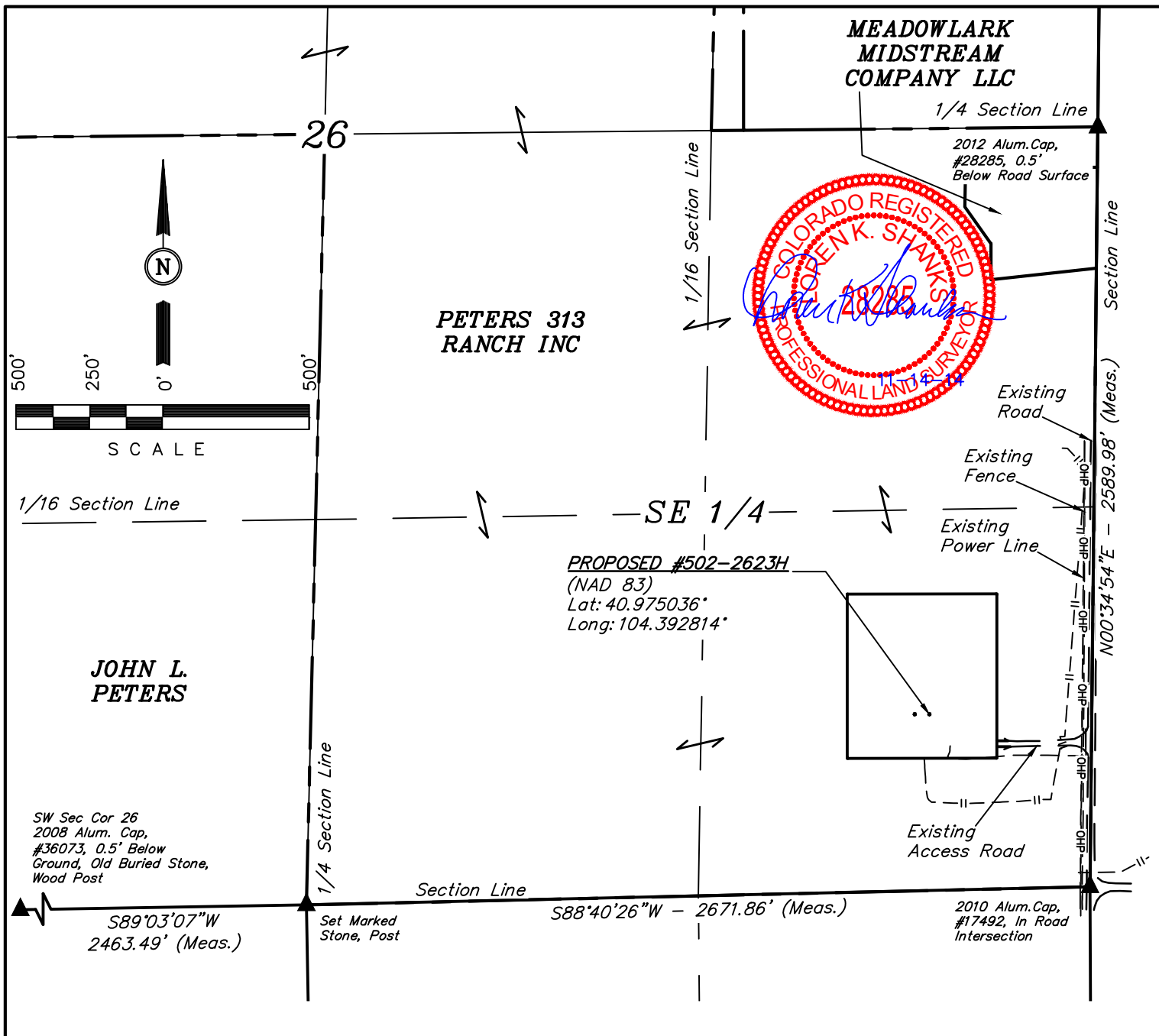
EOG RESOURCES, INC.

FOX CREEK 26 SESE  
SECTION 26, T12N, R63W, 6th P.M.  
SE 1/4 SE 1/4



UELS, LLC  
Corporate Office \* 85 South 200 East  
Vernal, UT 84078 \* (435) 789-1017

DRAWN BY: J.P.	DATE DRAWN: 11-10-14
SCALE: 1" = 80'	REVISED: 01-21-15 M.O.B.
INTERIM RECLAMATION PLAN	FIGURE #4



#### PLANT COMMUNITY

- ☐ DISTURBED GRASSLAND  
☒ NATIVE GRASSLAND  
☐ SHRUB LAND  
☐ PLAINS RIPARIAN  
☐ MOUNTAIN RIPARIAN  
☐ FOREST LAND  
☐ WETLANDS AQUATIC  
☐ ALPINE  
☐ OTHER (Describe): \_\_\_\_\_

#### CURRENT LAND USE

- CROP LAND: ☐ IRRIGATED ☐ DRY LAND ☐ IMPROVED PASTURE  
 NON-CROP LAND: ☒ RANGELAND ☐ TIMBER ☐ RECREATIONAL  
 SUBDIVIDED: ☐ INDUSTRIAL ☐ COMMERCIAL ☐ RESIDENTIAL

#### FUTURE LAND USE

- CROP LAND: ☐ IRRIGATED ☐ DRY LAND ☐ IMPROVED PASTURE  
 NON-CROP LAND: ☐ RANGELAND ☐ TIMBER ☐ RECREATIONAL  
 SUBDIVIDED: ☐ INDUSTRIAL ☐ COMMERCIAL ☐ RESIDENTIAL

### EOG RESOURCES, INC.

FOX CREEK 26 SESE  
 SECTION 26, T12N, R63W, 6th P.M.  
 SE 1/4 SE 1/4

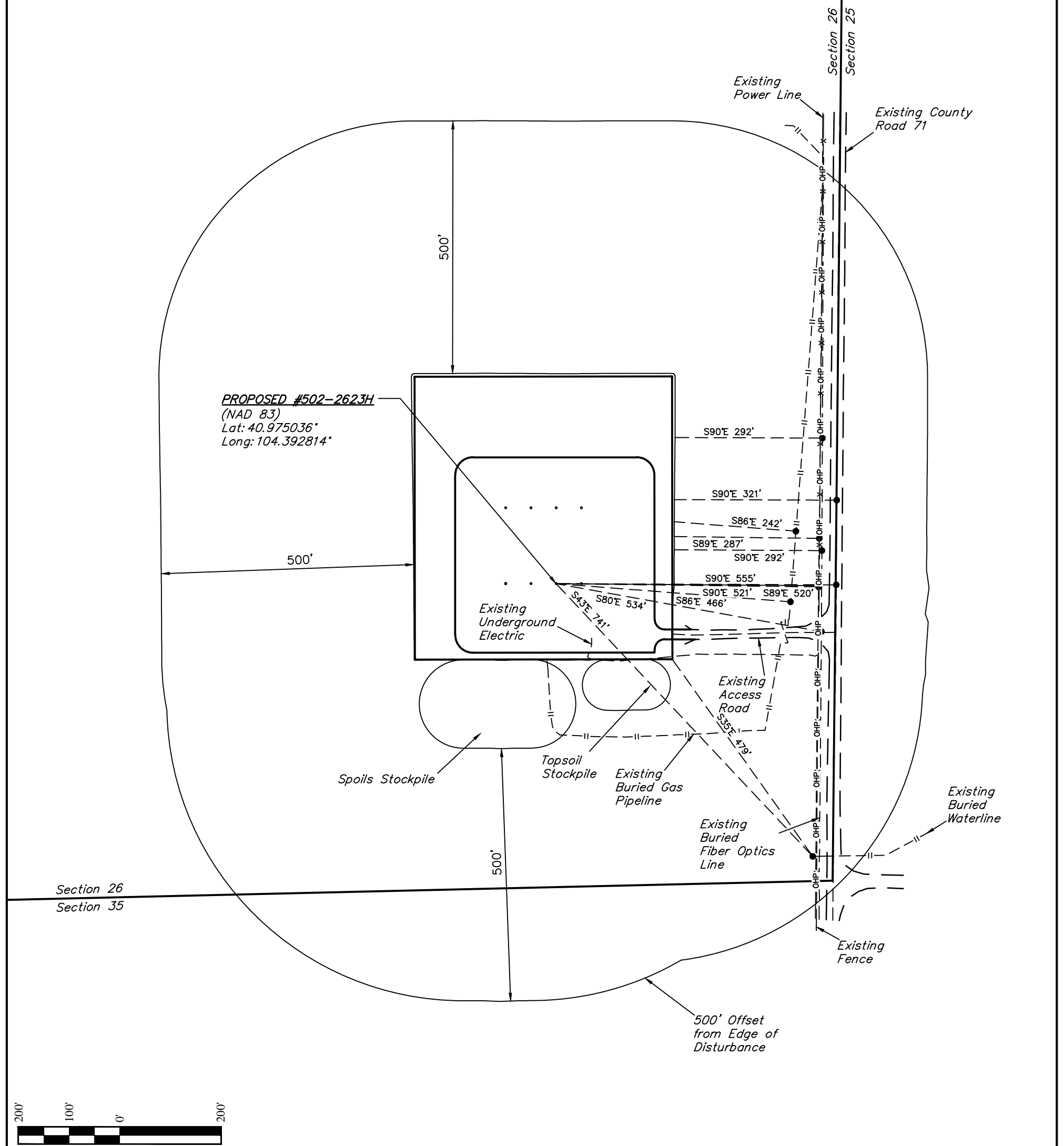
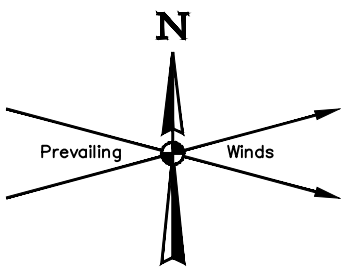
SURVEYED BY: GREG WEIMER	SURVEY DATE: 11-05-14
DRAWN BY: J.P.	DATE DRAWN: 11-10-14
SCALE: 1" = 500'	REVISED: 00-00-00

LOCATION DRAWING

FIGURE #5



UELS, LLC  
 Corporate Office \* 85 South 200 East  
 Vernal, UT 84078 \* (435) 789-1017



EOG RESOURCES, INC.

FOX CREEK 26 SESE  
SECTION 26, T12N, R63W, 6th P.M.  
SE 1/4 SE 1/4

SURVEYED BY: GREG WEIMER	SURVEY DATE: 11-05-14
DRAWN BY: J.P.	DATE DRAWN: 11-10-14
SCALE: 1" = 200'	REVISED: 00-00-00
FIGURE #5A	



UELS, LLC  
Corporate Office \* 85 South 200 East  
Vernal, UT 84078 \* (435) 789-1017