

Synergy Resources

Well Name: **SRC Evans 43-26-23-14NHZ**

Surface Location: SRC Evans East Pad Sec.26-T5N-R66W
North American Datum 1983 , US State Plane 1983 , Colorado Northern Zone

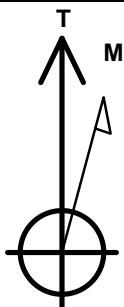
Ground Elevation: 4754.0

+N/-S	+E/-W	Northing	Easting	Latitude	Longitude	Slot
0.0	0.0	1379455.70	3211050.05	40.372533	-104.742516	

RKB - 15' WELL @ 4769.0ft (RKB - 15')

WELLBORE TARGET DETAILS

Name	TVD	+N/-S	+E/-W	Shape
SHL 1980'FNL, 2130'FEL, SEC.26	1.0	0.0	0.0	Point
BHL 2162'FSL, 350'FEL, SEC.14	6870.0	9280.9	1755.6	Point



Azimuths to True North
Magnetic North: 8.39°

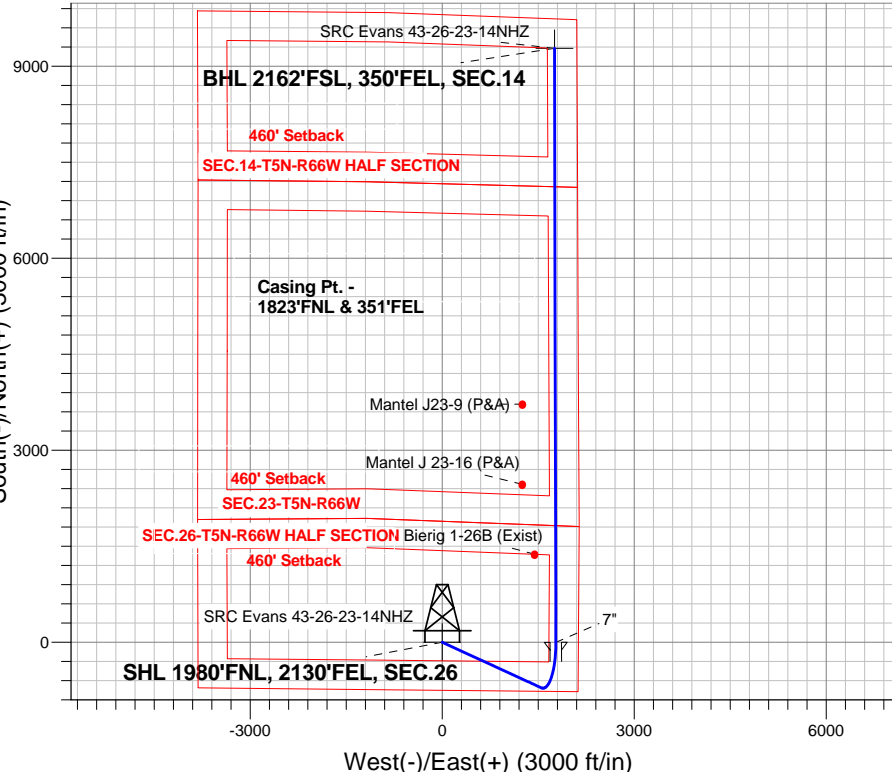
Magnetic Field
Strength: 52764.2snT
Dip Angle: 66.92°
Date: 10/30/2014
Model: IGRF2010

SRC Evans East Pad Sec.26-T5N-R66W
SRC Evans 43-26-23-14NHZ
Plan #1 (10-27-14)
13:23, October 30 2014

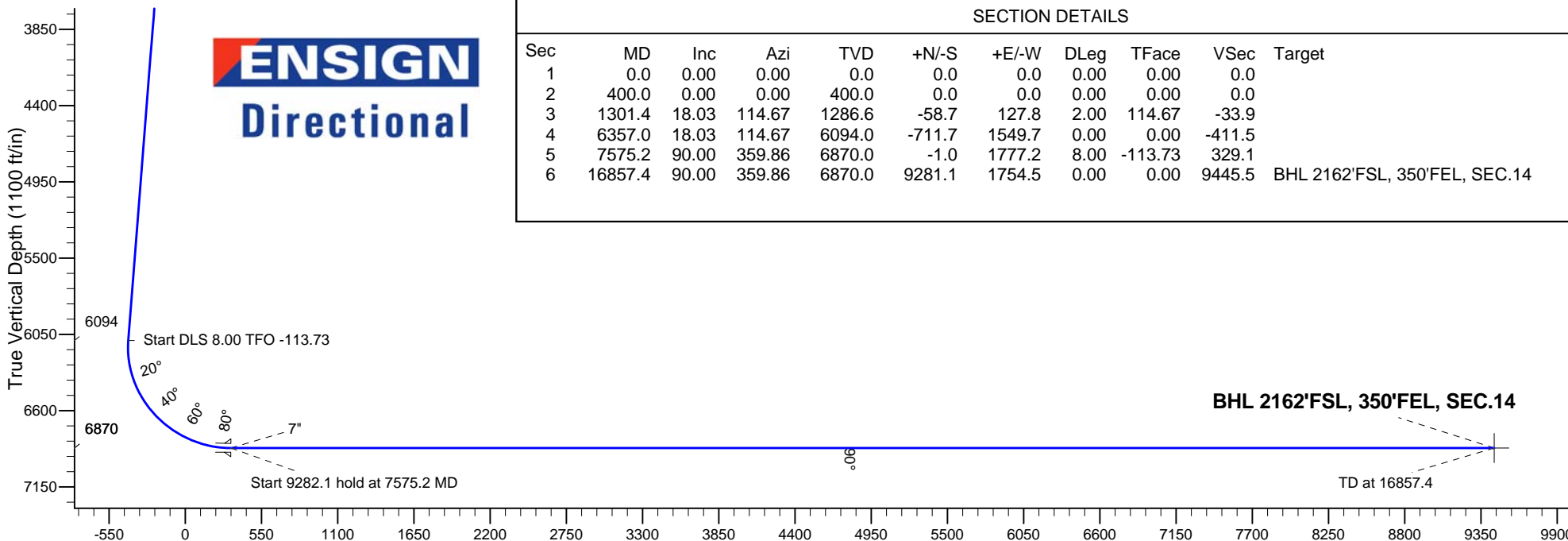
ANNOTATIONS

TVD	MD	Annotation
400.0	400.0	KOP - Start Build 2.00
1286.6	1301.4	Start 5055.6 hold at 1301.4 MD
6094.0	6357.0	Start DLS 8.00 TFO -113.73
6870.0	7575.2	Start 9282.1 hold at 7575.2 MD
6870.0	16857.4	TD at 16857.4

South(-)/North(+) (3000 ft/in)



ENSIGN
Directional



SECTION DETAILS

Sec	MD	Inc	Azi	TVD	+N/-S	+E/-W	DLeg	TFace	VSec	Target
1	0.0	0.00	0.00	0.0	0.0	0.0	0.00	0.00	0.0	
2	400.0	0.00	0.00	400.0	0.0	0.0	0.00	0.00	0.0	
3	1301.4	18.03	114.67	1286.6	-58.7	127.8	2.00	114.67	-33.9	
4	6357.0	18.03	114.67	6094.0	-711.7	1549.7	0.00	0.00	-411.5	
5	7575.2	90.00	359.86	6870.0	-1.0	1777.2	8.00	-113.73	329.1	
6	16857.4	90.00	359.86	6870.0	9281.1	1754.5	0.00	0.00	9445.5	BHL 2162'FSL, 350'FEL, SEC.14

Vertical Section at 10.70° (1100 ft/in)



Synergy Resources

SEC.26-T5N-R66W

SRC Evans East Pad Sec.26-T5N-R66W

SRC Evans 43-26-23-14NHZ

Wellbore #1

Plan: Plan #1 (10-27-14)

Standard Planning Report

30 October, 2014

Plan Sections										
Measured Depth (ft)	Inclination (°)	Azimuth (°)	Vertical Depth (ft)	+N/-S (ft)	+E/-W (ft)	Dogleg Rate (°/100ft)	Build Rate (°/100ft)	Turn Rate (°/100ft)	TFO (°)	Target
0.0	0.00	0.00	0.0	0.0	0.0	0.00	0.00	0.00	0.00	
400.0	0.00	0.00	400.0	0.0	0.0	0.00	0.00	0.00	0.00	
1,301.4	18.03	114.67	1,286.6	-58.7	127.8	2.00	2.00	0.00	114.67	
6,357.0	18.03	114.67	6,094.0	-711.7	1,549.7	0.00	0.00	0.00	0.00	
7,575.2	90.00	359.86	6,870.0	-1.0	1,777.2	8.00	5.91	-9.42	-113.73	
16,857.4	90.00	359.86	6,870.0	9,281.1	1,754.5	0.00	0.00	0.00	0.00	BHL 2162'FSL, 350

Database:	Landmark	Local Co-ordinate Reference:	Well SRC Evans 43-26-23-14NHZ
Company:	Synergy Resources	TVD Reference:	WELL @ 4769.0ft (RKB - 15')
Project:	SEC.26-T5N-R66W	MD Reference:	WELL @ 4769.0ft (RKB - 15')
Site:	SRC Evans East Pad Sec.26-T5N-R66W	North Reference:	True
Well:	SRC Evans 43-26-23-14NHZ	Survey Calculation Method:	Minimum Curvature
Wellbore:	Wellbore #1		
Design:	Plan #1 (10-27-14)		

Planned Survey									
Measured Depth (ft)	Inclination (°)	Azimuth (°)	Vertical Depth (ft)	+N/-S (ft)	+E/-W (ft)	Vertical Section (ft)	Dogleg Rate (°/100ft)	Build Rate (°/100ft)	Turn Rate (°/100ft)
0.0	0.00	0.00	0.0	0.0	0.0	0.0	0.00	0.00	0.00
1.0	0.00	0.00	1.0	0.0	0.0	0.0	0.00	0.00	0.00
SHL 1980'FNL, 2130'FEL, SEC.26									
100.0	0.00	0.00	100.0	0.0	0.0	0.0	0.00	0.00	0.00
200.0	0.00	0.00	200.0	0.0	0.0	0.0	0.00	0.00	0.00
300.0	0.00	0.00	300.0	0.0	0.0	0.0	0.00	0.00	0.00
400.0	0.00	0.00	400.0	0.0	0.0	0.0	0.00	0.00	0.00
KOP - Start Build 2.00									
500.0	2.00	114.67	500.0	-0.7	1.6	-0.4	2.00	2.00	0.00
600.0	4.00	114.67	599.8	-2.9	6.3	-1.7	2.00	2.00	0.00
700.0	6.00	114.67	699.5	-6.5	14.3	-3.8	2.00	2.00	0.00
800.0	8.00	114.67	798.7	-11.6	25.3	-6.7	2.00	2.00	0.00
900.0	10.00	114.67	897.5	-18.2	39.6	-10.5	2.00	2.00	0.00
1,000.0	12.00	114.67	995.6	-26.1	56.9	-15.1	2.00	2.00	0.00
1,100.0	14.00	114.67	1,093.1	-35.5	77.3	-20.5	2.00	2.00	0.00
1,200.0	16.00	114.67	1,189.6	-46.3	100.8	-26.8	2.00	2.00	0.00
1,300.0	18.00	114.67	1,285.3	-58.5	127.4	-33.8	2.00	2.00	0.00
1,301.4	18.03	114.67	1,286.6	-58.7	127.8	-33.9	2.00	2.00	0.00
Start 5055.6 hold at 1301.4 MD									
1,400.0	18.03	114.67	1,380.4	-71.4	155.5	-41.3	0.00	0.00	0.00
1,500.0	18.03	114.67	1,475.4	-84.3	183.7	-48.8	0.00	0.00	0.00
1,600.0	18.03	114.67	1,570.5	-97.3	211.8	-56.2	0.00	0.00	0.00
1,700.0	18.03	114.67	1,665.6	-110.2	239.9	-63.7	0.00	0.00	0.00
1,800.0	18.03	114.67	1,760.7	-123.1	268.0	-71.2	0.00	0.00	0.00
1,900.0	18.03	114.67	1,855.8	-136.0	296.2	-78.6	0.00	0.00	0.00
2,000.0	18.03	114.67	1,950.9	-148.9	324.3	-86.1	0.00	0.00	0.00
2,100.0	18.03	114.67	2,046.0	-161.8	352.4	-93.6	0.00	0.00	0.00
2,200.0	18.03	114.67	2,141.1	-174.8	380.5	-101.0	0.00	0.00	0.00
2,300.0	18.03	114.67	2,236.2	-187.7	408.7	-108.5	0.00	0.00	0.00
2,400.0	18.03	114.67	2,331.3	-200.6	436.8	-116.0	0.00	0.00	0.00
2,500.0	18.03	114.67	2,426.4	-213.5	464.9	-123.4	0.00	0.00	0.00
2,600.0	18.03	114.67	2,521.4	-226.4	493.0	-130.9	0.00	0.00	0.00
2,700.0	18.03	114.67	2,616.5	-239.3	521.2	-138.4	0.00	0.00	0.00
2,800.0	18.03	114.67	2,711.6	-252.3	549.3	-145.8	0.00	0.00	0.00
2,900.0	18.03	114.67	2,806.7	-265.2	577.4	-153.3	0.00	0.00	0.00
3,000.0	18.03	114.67	2,901.8	-278.1	605.5	-160.8	0.00	0.00	0.00
3,100.0	18.03	114.67	2,996.9	-291.0	633.7	-168.2	0.00	0.00	0.00
3,200.0	18.03	114.67	3,092.0	-303.9	661.8	-175.7	0.00	0.00	0.00
3,300.0	18.03	114.67	3,187.1	-316.8	689.9	-183.2	0.00	0.00	0.00
3,400.0	18.03	114.67	3,282.2	-329.8	718.0	-190.6	0.00	0.00	0.00
3,500.0	18.03	114.67	3,377.3	-342.7	746.2	-198.1	0.00	0.00	0.00
3,600.0	18.03	114.67	3,472.3	-355.6	774.3	-205.6	0.00	0.00	0.00
3,700.0	18.03	114.67	3,567.4	-368.5	802.4	-213.0	0.00	0.00	0.00
3,800.0	18.03	114.67	3,662.5	-381.4	830.5	-220.5	0.00	0.00	0.00
3,900.0	18.03	114.67	3,757.6	-394.3	858.7	-228.0	0.00	0.00	0.00
4,000.0	18.03	114.67	3,852.7	-407.3	886.8	-235.4	0.00	0.00	0.00
4,100.0	18.03	114.67	3,947.8	-420.2	914.9	-242.9	0.00	0.00	0.00
4,200.0	18.03	114.67	4,042.9	-433.1	943.0	-250.4	0.00	0.00	0.00
4,300.0	18.03	114.67	4,138.0	-446.0	971.2	-257.9	0.00	0.00	0.00
4,400.0	18.03	114.67	4,233.1	-458.9	999.3	-265.3	0.00	0.00	0.00
4,500.0	18.03	114.67	4,328.2	-471.8	1,027.4	-272.8	0.00	0.00	0.00
4,600.0	18.03	114.67	4,423.3	-484.8	1,055.5	-280.3	0.00	0.00	0.00
4,700.0	18.03	114.67	4,518.3	-497.7	1,083.7	-287.7	0.00	0.00	0.00

Database:	Landmark	Local Co-ordinate Reference:	Well SRC Evans 43-26-23-14NHZ
Company:	Synergy Resources	TVD Reference:	WELL @ 4769.0ft (RKB - 15')
Project:	SEC.26-T5N-R66W	MD Reference:	WELL @ 4769.0ft (RKB - 15')
Site:	SRC Evans East Pad Sec.26-T5N-R66W	North Reference:	True
Well:	SRC Evans 43-26-23-14NHZ	Survey Calculation Method:	Minimum Curvature
Wellbore:	Wellbore #1		
Design:	Plan #1 (10-27-14)		

Planned Survey										
Measured Depth (ft)	Inclination (°)	Azimuth (°)	Vertical Depth (ft)	+N/-S (ft)	+E/-W (ft)	Vertical Section (ft)	Dogleg Rate (°/100ft)	Build Rate (°/100ft)	Turn Rate (°/100ft)	
4,800.0	18.03	114.67	4,613.4	-510.6	1,111.8	-295.2	0.00	0.00	0.00	
4,900.0	18.03	114.67	4,708.5	-523.5	1,139.9	-302.7	0.00	0.00	0.00	
5,000.0	18.03	114.67	4,803.6	-536.4	1,168.0	-310.1	0.00	0.00	0.00	
5,100.0	18.03	114.67	4,898.7	-549.3	1,196.2	-317.6	0.00	0.00	0.00	
5,200.0	18.03	114.67	4,993.8	-562.3	1,224.3	-325.1	0.00	0.00	0.00	
5,300.0	18.03	114.67	5,088.9	-575.2	1,252.4	-332.5	0.00	0.00	0.00	
5,400.0	18.03	114.67	5,184.0	-588.1	1,280.5	-340.0	0.00	0.00	0.00	
5,500.0	18.03	114.67	5,279.1	-601.0	1,308.6	-347.5	0.00	0.00	0.00	
5,600.0	18.03	114.67	5,374.2	-613.9	1,336.8	-354.9	0.00	0.00	0.00	
5,700.0	18.03	114.67	5,469.2	-626.8	1,364.9	-362.4	0.00	0.00	0.00	
5,800.0	18.03	114.67	5,564.3	-639.8	1,393.0	-369.9	0.00	0.00	0.00	
5,900.0	18.03	114.67	5,659.4	-652.7	1,421.1	-377.3	0.00	0.00	0.00	
6,000.0	18.03	114.67	5,754.5	-665.6	1,449.3	-384.8	0.00	0.00	0.00	
6,100.0	18.03	114.67	5,849.6	-678.5	1,477.4	-392.3	0.00	0.00	0.00	
6,200.0	18.03	114.67	5,944.7	-691.4	1,505.5	-399.7	0.00	0.00	0.00	
6,300.0	18.03	114.67	6,039.8	-704.3	1,533.6	-407.2	0.00	0.00	0.00	
6,357.0	18.03	114.67	6,094.0	-711.7	1,549.7	-411.5	0.00	0.00	0.00	
Start DLS 8.00 TFO -113.73										
6,400.0	16.93	103.79	6,135.0	-716.0	1,561.8	-413.4	8.00	-2.55	-25.29	
6,500.0	16.92	76.06	6,230.8	-715.9	1,590.1	-408.1	8.00	-0.01	-27.73	
6,600.0	20.26	53.03	6,325.7	-702.0	1,618.1	-389.2	8.00	3.34	-23.03	
6,700.0	25.67	37.79	6,417.9	-674.4	1,645.3	-357.1	8.00	5.41	-15.24	
6,800.0	32.12	27.93	6,505.4	-633.7	1,671.0	-312.3	8.00	6.45	-9.86	
6,900.0	39.10	21.18	6,586.7	-580.8	1,694.9	-255.8	8.00	6.98	-6.75	
7,000.0	46.36	16.22	6,660.1	-516.5	1,716.5	-188.7	8.00	7.26	-4.96	
7,100.0	53.79	12.35	6,724.3	-442.2	1,735.2	-112.2	8.00	7.43	-3.87	
7,200.0	61.33	9.16	6,777.9	-359.4	1,750.9	-27.9	8.00	7.53	-3.19	
7,300.0	68.93	6.40	6,819.9	-269.5	1,763.1	62.6	8.00	7.60	-2.76	
7,400.0	76.57	3.91	6,849.5	-174.5	1,771.6	157.6	8.00	7.64	-2.49	
7,500.0	84.23	1.57	6,866.2	-76.1	1,776.3	255.2	8.00	7.66	-2.34	
7,575.2	90.00	359.86	6,870.0	-1.0	1,777.2	329.1	8.00	7.67	-2.27	
Start 9282.1 hold at 7575.2 MD - 7"										
7,600.0	90.00	359.86	6,870.0	23.8	1,777.1	353.5	0.01	0.01	0.00	
7,700.0	90.00	359.86	6,870.0	123.8	1,776.9	451.7	0.00	0.00	0.00	
7,800.0	90.00	359.86	6,870.0	223.8	1,776.7	549.9	0.00	0.00	0.00	
7,900.0	90.00	359.86	6,870.0	323.8	1,776.4	648.1	0.00	0.00	0.00	
8,000.0	90.00	359.86	6,870.0	423.8	1,776.2	746.3	0.00	0.00	0.00	
8,100.0	90.00	359.86	6,870.0	523.8	1,775.9	844.5	0.00	0.00	0.00	
8,200.0	90.00	359.86	6,870.0	623.8	1,775.7	942.7	0.00	0.00	0.00	
8,300.0	90.00	359.86	6,870.0	723.8	1,775.4	1,041.0	0.00	0.00	0.00	
8,400.0	90.00	359.86	6,870.0	823.8	1,775.2	1,139.2	0.00	0.00	0.00	
8,500.0	90.00	359.86	6,870.0	923.8	1,774.9	1,237.4	0.00	0.00	0.00	
8,600.0	90.00	359.86	6,870.0	1,023.8	1,774.7	1,335.6	0.00	0.00	0.00	
8,700.0	90.00	359.86	6,870.0	1,123.8	1,774.5	1,433.8	0.00	0.00	0.00	
8,800.0	90.00	359.86	6,870.0	1,223.8	1,774.2	1,532.0	0.00	0.00	0.00	
8,900.0	90.00	359.86	6,870.0	1,323.8	1,774.0	1,630.2	0.00	0.00	0.00	
9,000.0	90.00	359.86	6,870.0	1,423.8	1,773.7	1,728.5	0.00	0.00	0.00	
9,100.0	90.00	359.86	6,870.0	1,523.8	1,773.5	1,826.7	0.00	0.00	0.00	
9,200.0	90.00	359.86	6,870.0	1,623.8	1,773.2	1,924.9	0.00	0.00	0.00	
9,300.0	90.00	359.86	6,870.0	1,723.8	1,773.0	2,023.1	0.00	0.00	0.00	
9,400.0	90.00	359.86	6,870.0	1,823.8	1,772.7	2,121.3	0.00	0.00	0.00	
9,500.0	90.00	359.86	6,870.0	1,923.8	1,772.5	2,219.5	0.00	0.00	0.00	
9,600.0	90.00	359.86	6,870.0	2,023.8	1,772.3	2,317.7	0.00	0.00	0.00	
9,700.0	90.00	359.86	6,870.0	2,123.8	1,772.0	2,416.0	0.00	0.00	0.00	

Database:	Landmark	Local Co-ordinate Reference:	Well SRC Evans 43-26-23-14NHZ
Company:	Synergy Resources	TVD Reference:	WELL @ 4769.0ft (RKB - 15')
Project:	SEC.26-T5N-R66W	MD Reference:	WELL @ 4769.0ft (RKB - 15')
Site:	SRC Evans East Pad Sec.26-T5N-R66W	North Reference:	True
Well:	SRC Evans 43-26-23-14NHZ	Survey Calculation Method:	Minimum Curvature
Wellbore:	Wellbore #1		
Design:	Plan #1 (10-27-14)		

Planned Survey									
Measured Depth (ft)	Inclination (°)	Azimuth (°)	Vertical Depth (ft)	+N/-S (ft)	+E/-W (ft)	Vertical Section (ft)	Dogleg Rate (°/100ft)	Build Rate (°/100ft)	Turn Rate (°/100ft)
9,800.0	90.00	359.86	6,870.0	2,223.8	1,771.8	2,514.2	0.00	0.00	0.00
9,900.0	90.00	359.86	6,870.0	2,323.8	1,771.5	2,612.4	0.00	0.00	0.00
10,000.0	90.00	359.86	6,870.0	2,423.8	1,771.3	2,710.6	0.00	0.00	0.00
10,100.0	90.00	359.86	6,870.0	2,523.8	1,771.0	2,808.8	0.00	0.00	0.00
10,200.0	90.00	359.86	6,870.0	2,623.8	1,770.8	2,907.0	0.00	0.00	0.00
10,300.0	90.00	359.86	6,870.0	2,723.8	1,770.5	3,005.2	0.00	0.00	0.00
10,400.0	90.00	359.86	6,870.0	2,823.8	1,770.3	3,103.4	0.00	0.00	0.00
10,500.0	90.00	359.86	6,870.0	2,923.8	1,770.1	3,201.7	0.00	0.00	0.00
10,600.0	90.00	359.86	6,870.0	3,023.8	1,769.8	3,299.9	0.00	0.00	0.00
10,700.0	90.00	359.86	6,870.0	3,123.8	1,769.6	3,398.1	0.00	0.00	0.00
10,800.0	90.00	359.86	6,870.0	3,223.8	1,769.3	3,496.3	0.00	0.00	0.00
10,900.0	90.00	359.86	6,870.0	3,323.8	1,769.1	3,594.5	0.00	0.00	0.00
11,000.0	90.00	359.86	6,870.0	3,423.8	1,768.8	3,692.7	0.00	0.00	0.00
11,100.0	90.00	359.86	6,870.0	3,523.8	1,768.6	3,790.9	0.00	0.00	0.00
11,200.0	90.00	359.86	6,870.0	3,623.8	1,768.3	3,889.2	0.00	0.00	0.00
11,300.0	90.00	359.86	6,870.0	3,723.8	1,768.1	3,987.4	0.00	0.00	0.00
11,400.0	90.00	359.86	6,870.0	3,823.8	1,767.9	4,085.6	0.00	0.00	0.00
11,500.0	90.00	359.86	6,870.0	3,923.8	1,767.6	4,183.8	0.00	0.00	0.00
11,600.0	90.00	359.86	6,870.0	4,023.8	1,767.4	4,282.0	0.00	0.00	0.00
11,700.0	90.00	359.86	6,870.0	4,123.8	1,767.1	4,380.2	0.00	0.00	0.00
11,800.0	90.00	359.86	6,870.0	4,223.8	1,766.9	4,478.4	0.00	0.00	0.00
11,900.0	90.00	359.86	6,870.0	4,323.8	1,766.6	4,576.7	0.00	0.00	0.00
12,000.0	90.00	359.86	6,870.0	4,423.8	1,766.4	4,674.9	0.00	0.00	0.00
12,100.0	90.00	359.86	6,870.0	4,523.8	1,766.1	4,773.1	0.00	0.00	0.00
12,200.0	90.00	359.86	6,870.0	4,623.8	1,765.9	4,871.3	0.00	0.00	0.00
12,300.0	90.00	359.86	6,870.0	4,723.8	1,765.7	4,969.5	0.00	0.00	0.00
12,400.0	90.00	359.86	6,870.0	4,823.8	1,765.4	5,067.7	0.00	0.00	0.00
12,500.0	90.00	359.86	6,870.0	4,923.7	1,765.2	5,165.9	0.00	0.00	0.00
12,600.0	90.00	359.86	6,870.0	5,023.7	1,764.9	5,264.2	0.00	0.00	0.00
12,700.0	90.00	359.86	6,870.0	5,123.7	1,764.7	5,362.4	0.00	0.00	0.00
12,800.0	90.00	359.86	6,870.0	5,223.7	1,764.4	5,460.6	0.00	0.00	0.00
12,900.0	90.00	359.86	6,870.0	5,323.7	1,764.2	5,558.8	0.00	0.00	0.00
13,000.0	90.00	359.86	6,870.0	5,423.7	1,763.9	5,657.0	0.00	0.00	0.00
13,100.0	90.00	359.86	6,870.0	5,523.7	1,763.7	5,755.2	0.00	0.00	0.00
13,200.0	90.00	359.86	6,870.0	5,623.7	1,763.5	5,853.4	0.00	0.00	0.00
13,300.0	90.00	359.86	6,870.0	5,723.7	1,763.2	5,951.7	0.00	0.00	0.00
13,400.0	90.00	359.86	6,870.0	5,823.7	1,763.0	6,049.9	0.00	0.00	0.00
13,500.0	90.00	359.86	6,870.0	5,923.7	1,762.7	6,148.1	0.00	0.00	0.00
13,600.0	90.00	359.86	6,870.0	6,023.7	1,762.5	6,246.3	0.00	0.00	0.00
13,700.0	90.00	359.86	6,870.0	6,123.7	1,762.2	6,344.5	0.00	0.00	0.00
13,800.0	90.00	359.86	6,870.0	6,223.7	1,762.0	6,442.7	0.00	0.00	0.00
13,900.0	90.00	359.86	6,870.0	6,323.7	1,761.7	6,540.9	0.00	0.00	0.00
14,000.0	90.00	359.86	6,870.0	6,423.7	1,761.5	6,639.2	0.00	0.00	0.00
14,100.0	90.00	359.86	6,870.0	6,523.7	1,761.3	6,737.4	0.00	0.00	0.00
14,200.0	90.00	359.86	6,870.0	6,623.7	1,761.0	6,835.6	0.00	0.00	0.00
14,300.0	90.00	359.86	6,870.0	6,723.7	1,760.8	6,933.8	0.00	0.00	0.00
14,400.0	90.00	359.86	6,870.0	6,823.7	1,760.5	7,032.0	0.00	0.00	0.00
14,500.0	90.00	359.86	6,870.0	6,923.7	1,760.3	7,130.2	0.00	0.00	0.00
14,600.0	90.00	359.86	6,870.0	7,023.7	1,760.0	7,228.4	0.00	0.00	0.00
14,700.0	90.00	359.86	6,870.0	7,123.7	1,759.8	7,326.7	0.00	0.00	0.00
14,800.0	90.00	359.86	6,870.0	7,223.7	1,759.5	7,424.9	0.00	0.00	0.00
14,900.0	90.00	359.86	6,870.0	7,323.7	1,759.3	7,523.1	0.00	0.00	0.00
15,000.0	90.00	359.86	6,870.0	7,423.7	1,759.1	7,621.3	0.00	0.00	0.00
15,100.0	90.00	359.86	6,870.0	7,523.7	1,758.8	7,719.5	0.00	0.00	0.00

Database:	Landmark	Local Co-ordinate Reference:	Well SRC Evans 43-26-23-14NHZ
Company:	Synergy Resources	TVD Reference:	WELL @ 4769.0ft (RKB - 15')
Project:	SEC.26-T5N-R66W	MD Reference:	WELL @ 4769.0ft (RKB - 15')
Site:	SRC Evans East Pad Sec.26-T5N-R66W	North Reference:	True
Well:	SRC Evans 43-26-23-14NHZ	Survey Calculation Method:	Minimum Curvature
Wellbore:	Wellbore #1		
Design:	Plan #1 (10-27-14)		

Planned Survey										
Measured Depth (ft)	Inclination (°)	Azimuth (°)	Vertical Depth (ft)	+N/-S (ft)	+E/-W (ft)	Vertical Section (ft)	Dogleg Rate (°/100ft)	Build Rate (°/100ft)	Turn Rate (°/100ft)	
15,200.0	90.00	359.86	6,870.0	7,623.7	1,758.6	7,817.7	0.00	0.00	0.00	
15,300.0	90.00	359.86	6,870.0	7,723.7	1,758.3	7,915.9	0.00	0.00	0.00	
15,400.0	90.00	359.86	6,870.0	7,823.7	1,758.1	8,014.1	0.00	0.00	0.00	
15,500.0	90.00	359.86	6,870.0	7,923.7	1,757.8	8,112.4	0.00	0.00	0.00	
15,600.0	90.00	359.86	6,870.0	8,023.7	1,757.6	8,210.6	0.00	0.00	0.00	
15,700.0	90.00	359.86	6,870.0	8,123.7	1,757.3	8,308.8	0.00	0.00	0.00	
15,800.0	90.00	359.86	6,870.0	8,223.7	1,757.1	8,407.0	0.00	0.00	0.00	
15,900.0	90.00	359.86	6,870.0	8,323.7	1,756.9	8,505.2	0.00	0.00	0.00	
16,000.0	90.00	359.86	6,870.0	8,423.7	1,756.6	8,603.4	0.00	0.00	0.00	
16,100.0	90.00	359.86	6,870.0	8,523.7	1,756.4	8,701.6	0.00	0.00	0.00	
16,200.0	90.00	359.86	6,870.0	8,623.7	1,756.1	8,799.9	0.00	0.00	0.00	
16,300.0	90.00	359.86	6,870.0	8,723.7	1,755.9	8,898.1	0.00	0.00	0.00	
16,400.0	90.00	359.86	6,870.0	8,823.7	1,755.6	8,996.3	0.00	0.00	0.00	
16,500.0	90.00	359.86	6,870.0	8,923.7	1,755.4	9,094.5	0.00	0.00	0.00	
16,600.0	90.00	359.86	6,870.0	9,023.7	1,755.1	9,192.7	0.00	0.00	0.00	
16,700.0	90.00	359.86	6,870.0	9,123.7	1,754.9	9,290.9	0.00	0.00	0.00	
16,800.0	90.00	359.86	6,870.0	9,223.7	1,754.7	9,389.1	0.00	0.00	0.00	
16,857.2	90.00	359.86	6,870.0	9,280.9	1,754.5	9,445.3	0.00	0.00	0.00	
BHL 2162'FSL, 350'FEL, SEC.14										
16,857.4	90.00	359.86	6,870.0	9,281.1	1,754.5	9,445.5	0.00	0.00	0.00	
TD at 16857.4										

Targets										
Target Name	- hit/miss target	Dip Angle (°)	Dip Dir. (°)	TVD (ft)	+N/-S (ft)	+E/-W (ft)	Northing (ft)	Easting (ft)	Latitude	Longitude
SHL 1980'FNL, 2130'I	- plan hits target center	0.00	0.00	1.0	0.0	0.0	1,379,455.71	3,211,050.05	40.372533	-104.742516
	- Point									
BHL 2162'FSL, 350'FI	- plan misses target center by 1.1ft at 16857.2ft MD (6870.0 TVD, 9280.9 N, 1754.5 E)	0.00	0.00	6,870.0	9,280.9	1,755.6	1,388,750.86	3,212,726.21	40.398008	-104.736213
	- Point									

Casing Points						
Measured Depth (ft)	Vertical Depth (ft)	Name	Casing Diameter (")	Hole Diameter (")		
7,575.2	6,870.0	7"	7	7-1/2		

Plan Annotations					
Measured Depth (ft)	Vertical Depth (ft)	+N/-S (ft)	+E/-W (ft)	Comment	
400.0	400.0	0.0	0.0	KOP - Start Build 2.00	
1,301.4	1,286.6	-58.7	127.8	Start 5055.6 hold at 1301.4 MD	
6,357.0	6,094.0	-711.7	1,549.7	Start DLS 8.00 TFO -113.73	
7,575.2	6,870.0	-1.0	1,777.2	Start 9282.1 hold at 7575.2 MD	
16,857.4	6,870.0	9,281.1	1,754.5	TD at 16857.4	



Synergy Resources

SEC.26-T5N-R66W

SRC Evans East Pad Sec.26-T5N-R66W

SRC Evans 43-26-23-14NHZ

Wellbore #1

Plan #1 (10-27-14)

Anticollision Report

30 October, 2014

Company:	Synergy Resources	Local Co-ordinate Reference:	Well SRC Evans 43-26-23-14NHZ
Project:	SEC.26-T5N-R66W	TVD Reference:	WELL @ 4769.0ft (RKB - 15')
Reference Site:	SRC Evans East Pad Sec.26-T5N-R66W	MD Reference:	WELL @ 4769.0ft (RKB - 15')
Site Error:	0.0ft	North Reference:	True
Reference Well:	SRC Evans 43-26-23-14NHZ	Survey Calculation Method:	Minimum Curvature
Well Error:	0.0ft	Output errors are at	2.00 sigma
Reference Wellbore	Wellbore #1	Database:	Landmark
Reference Design:	Plan #1 (10-27-14)	Offset TVD Reference:	Offset Datum

Offset Design Existing Wells Sec.26-T5N-R66W - Bierig 1-26B (Exist) - Wellbore #1 - Wellbore #1												Offset Site Error:	0.0 ft
Survey Program: 7833-UNKNOWN												Offset Well Error:	0.0 ft
Reference	Offset	Semi Major Axis		Distance									
Measured Depth (ft)	Vertical Depth (ft)	Measured Depth (ft)	Vertical Depth (ft)	Reference (ft)	Offset (ft)	Highside Toolface (°)	Offset Wellbore Centre +N/-S (ft)	+E/-W (ft)	Between Centres (ft)	Between Ellipses (ft)	Minimum Separation (ft)	Separation Factor	Warning
8,800.0	6,870.0	6,876.0	6,876.0	42.5	137.5	-90.00	1,376.0	1,444.9	362.8	190.9	171.94	2.110	
8,900.0	6,870.0	6,876.0	6,876.0	43.6	137.5	-90.00	1,376.0	1,444.9	333.2	159.7	173.44	1.921	
8,953.1	6,870.0	6,876.0	6,876.0	44.1	137.5	-90.00	1,376.0	1,444.9	328.9	154.7	174.26	1.887	CC, ES, SF
9,000.0	6,870.0	6,876.0	6,876.0	44.7	137.5	-90.00	1,376.0	1,444.9	332.2	157.3	174.98	1.899	
9,100.0	6,870.0	6,876.0	6,876.0	45.9	137.5	-90.00	1,376.0	1,444.9	360.2	183.7	176.55	2.040	
9,200.0	6,870.0	6,876.0	6,876.0	47.2	137.5	-90.00	1,376.0	1,444.9	411.3	233.1	178.16	2.309	
9,300.0	6,870.0	6,876.0	6,876.0	48.6	137.5	-90.00	1,376.0	1,444.9	478.1	298.3	179.79	2.659	
9,400.0	6,870.0	6,876.0	6,876.0	49.9	137.5	-90.00	1,376.0	1,444.9	554.9	373.5	181.44	3.058	
9,500.0	6,870.0	6,876.0	6,876.0	51.4	137.5	-90.00	1,376.0	1,444.9	638.2	455.1	183.11	3.485	
9,600.0	6,870.0	6,876.0	6,876.0	52.9	137.5	-90.00	1,376.0	1,444.9	725.7	540.9	184.81	3.927	

Company:	Synergy Resources	Local Co-ordinate Reference:	Well SRC Evans 43-26-23-14NHZ
Project:	SEC.26-T5N-R66W	TVD Reference:	WELL @ 4769.0ft (RKB - 15')
Reference Site:	SRC Evans East Pad Sec.26-T5N-R66W	MD Reference:	WELL @ 4769.0ft (RKB - 15')
Site Error:	0.0ft	North Reference:	True
Reference Well:	SRC Evans 43-26-23-14NHZ	Survey Calculation Method:	Minimum Curvature
Well Error:	0.0ft	Output errors are at	2.00 sigma
Reference Wellbore	Wellbore #1	Database:	Landmark
Reference Design:	Plan #1 (10-27-14)	Offset TVD Reference:	Offset Datum

Offset Design												Offset Site Error:	0.0 ft
Existing Wells Sec.26-T5N-R66W - Mantel J 23-16 (P&A) - Wellbore #1 - Wellbore #1												Offset Well Error:	0.0 ft
Survey Program: 7460-UNKNOWN													
Reference		Offset		Semi Major Axis			Distance						
Measured Depth (ft)	Vertical Depth (ft)	Measured Depth (ft)	Vertical Depth (ft)	Reference (ft)	Offset (ft)	Highside Toolface (°)	Offset Wellbore Centre +N/-S (ft)	+E/-W (ft)	Between Centres (ft)	Between Ellipses (ft)	Minimum Separation (ft)	Separation Factor	Warning
9,500.0	6,870.0	6,910.0	6,910.0	51.4	138.2	-90.00	2,467.1	1,252.6	752.0	568.2	183.79	4.092	
9,600.0	6,870.0	6,910.0	6,910.0	52.9	138.2	-90.00	2,467.1	1,252.6	683.1	497.6	185.49	3.683	
9,700.0	6,870.0	6,910.0	6,910.0	54.4	138.2	-90.00	2,467.1	1,252.6	622.6	435.4	187.20	3.326	
9,800.0	6,870.0	6,910.0	6,910.0	55.9	138.2	-90.00	2,467.1	1,252.6	573.4	384.4	188.92	3.035	
9,900.0	6,870.0	6,910.0	6,910.0	57.5	138.2	-90.00	2,467.1	1,252.6	538.3	347.7	190.66	2.824	
10,000.0	6,870.0	6,910.0	6,910.0	59.1	138.2	-90.00	2,467.1	1,252.6	520.5	328.1	192.41	2.705	
10,044.6	6,870.0	6,910.0	6,910.0	59.8	138.2	-90.00	2,467.1	1,252.6	518.5	325.4	193.20	2.684	CC, ES, SF
10,100.0	6,870.0	6,910.0	6,910.0	60.7	138.2	-90.00	2,467.1	1,252.6	521.5	327.3	194.17	2.686	
10,200.0	6,870.0	6,910.0	6,910.0	62.4	138.2	-90.00	2,467.1	1,252.6	541.3	345.4	195.94	2.763	
10,300.0	6,870.0	6,910.0	6,910.0	64.0	138.2	-90.00	2,467.1	1,252.6	578.0	380.3	197.73	2.923	
10,400.0	6,870.0	6,910.0	6,910.0	65.7	138.2	-90.00	2,467.1	1,252.6	628.6	429.1	199.52	3.151	
10,500.0	6,870.0	6,910.0	6,910.0	67.4	138.2	-90.00	2,467.1	1,252.6	690.1	488.8	201.31	3.428	
10,600.0	6,870.0	6,910.0	6,910.0	69.1	138.2	-90.00	2,467.1	1,252.6	759.8	556.7	203.12	3.741	

Company:	Synergy Resources	Local Co-ordinate Reference:	Well SRC Evans 43-26-23-14NHZ
Project:	SEC.26-T5N-R66W	TVD Reference:	WELL @ 4769.0ft (RKB - 15')
Reference Site:	SRC Evans East Pad Sec.26-T5N-R66W	MD Reference:	WELL @ 4769.0ft (RKB - 15')
Site Error:	0.0ft	North Reference:	True
Reference Well:	SRC Evans 43-26-23-14NHZ	Survey Calculation Method:	Minimum Curvature
Well Error:	0.0ft	Output errors are at	2.00 sigma
Reference Wellbore	Wellbore #1	Database:	Landmark
Reference Design:	Plan #1 (10-27-14)	Offset TVD Reference:	Offset Datum

Offset Design Existing Wells Sec.26-T5N-R66W - Mantel J23-9 (P&A) - Wellbore #1 - Wellbore #1												Offset Site Error:	0.0 ft
Survey Program: 7435-UNKNOWN												Offset Well Error:	0.0 ft
Reference	Offset	Semi Major Axis		Distance									
Measured Depth (ft)	Vertical Depth (ft)	Measured Depth (ft)	Vertical Depth (ft)	Reference (ft)	Offset (ft)	Highside Toolface (°)	Offset Wellbore Centre +N/-S (ft)	+E/-W (ft)	Between Centres (ft)	Between Ellipses (ft)	Minimum Separation (ft)	Separation Factor	Warning
10,700.0	6,870.0	6,923.0	6,923.0	70.8	138.5	-90.00	3,720.4	1,255.3	787.6	582.5	205.19	3.839	
10,800.0	6,870.0	6,923.0	6,923.0	72.5	138.5	-90.00	3,720.4	1,255.3	714.7	507.7	207.01	3.453	
10,900.0	6,870.0	6,923.0	6,923.0	74.3	138.5	-90.00	3,720.4	1,255.3	649.0	440.2	208.83	3.108	
11,000.0	6,870.0	6,923.0	6,923.0	76.0	138.5	-90.00	3,720.4	1,255.3	593.0	382.3	210.66	2.815	
11,100.0	6,870.0	6,923.0	6,923.0	77.7	138.5	-90.00	3,720.4	1,255.3	549.6	337.1	212.49	2.587	
11,200.0	6,870.0	6,923.0	6,923.0	79.5	138.5	-90.00	3,720.4	1,255.3	522.0	307.7	214.33	2.436	
11,297.9	6,870.0	6,923.0	6,923.0	81.2	138.5	-90.00	3,720.4	1,255.3	512.8	296.6	216.13	2.372	CC
11,300.0	6,870.0	6,923.0	6,923.0	81.3	138.5	-90.00	3,720.4	1,255.3	512.8	296.6	216.17	2.372	ES, SF
11,400.0	6,870.0	6,923.0	6,923.0	83.0	138.5	-90.00	3,720.4	1,255.3	522.8	304.8	218.01	2.398	
11,500.0	6,870.0	6,923.0	6,923.0	84.8	138.5	-90.00	3,720.4	1,255.3	551.2	331.3	219.86	2.507	
11,600.0	6,870.0	6,923.0	6,923.0	86.6	138.5	-90.00	3,720.4	1,255.3	595.2	373.4	221.71	2.684	
11,700.0	6,870.0	6,923.0	6,923.0	88.4	138.5	-90.00	3,720.4	1,255.3	651.6	428.1	223.57	2.915	
11,800.0	6,870.0	6,923.0	6,923.0	90.2	138.5	-90.00	3,720.4	1,255.3	717.7	492.3	225.43	3.184	
11,900.0	6,870.0	6,923.0	6,923.0	92.0	138.5	-90.00	3,720.4	1,255.3	790.9	563.6	227.29	3.480	

Company:	Synergy Resources	Local Co-ordinate Reference:	Well SRC Evans 43-26-23-14NHZ
Project:	SEC.26-T5N-R66W	TVD Reference:	WELL @ 4769.0ft (RKB - 15')
Reference Site:	SRC Evans East Pad Sec.26-T5N-R66W	MD Reference:	WELL @ 4769.0ft (RKB - 15')
Site Error:	0.0ft	North Reference:	True
Reference Well:	SRC Evans 43-26-23-14NHZ	Survey Calculation Method:	Minimum Curvature
Well Error:	0.0ft	Output errors are at	2.00 sigma
Reference Wellbore	Wellbore #1	Database:	Landmark
Reference Design:	Plan #1 (10-27-14)	Offset TVD Reference:	Offset Datum

Offset Design												Offset Site Error:	0.0 ft
Survey Program: 0-MWD												Offset Well Error:	0.0 ft
Reference		Offset		Semi Major Axis			Distance						
Measured Depth (ft)	Vertical Depth (ft)	Measured Depth (ft)	Vertical Depth (ft)	Reference (ft)	Offset (ft)	Highside Toolface (°)	Offset Wellbore Centre +N/-S (ft)	+E/-W (ft)	Between Centres (ft)	Between Ellipses (ft)	Minimum Separation (ft)	Separation Factor	Warning
0.0	0.0	0.0	0.0	0.0	0.0	-90.09	-0.7	-460.0	460.1				
100.0	100.0	95.0	95.0	0.1	0.1	-90.09	-0.7	-460.0	460.0	459.8	0.22	2,099.077	
200.0	200.0	195.0	195.0	0.3	0.3	-90.09	-0.7	-460.0	460.0	459.4	0.66	693.795	
300.0	300.0	295.0	295.0	0.6	0.6	-90.09	-0.7	-460.0	460.0	458.9	1.11	413.473	
400.0	400.0	395.0	395.0	0.8	0.8	-90.09	-0.7	-460.0	460.0	458.5	1.56	294.488 CC, ES	
500.0	500.0	495.0	495.0	1.0	1.0	155.32	-0.7	-460.0	461.6	459.6	2.00	231.279	
600.0	599.8	594.8	594.8	1.2	1.2	155.55	-0.7	-460.0	466.4	463.9	2.42	192.393	
700.0	699.5	694.5	694.5	1.4	1.4	155.92	-0.7	-460.0	474.3	471.5	2.86	165.645	
800.0	798.7	793.7	793.7	1.7	1.7	156.42	-0.7	-460.0	485.5	482.2	3.31	146.548	
900.0	897.5	892.5	892.5	2.0	1.9	157.02	-0.7	-460.0	499.9	496.1	3.77	132.534	
1,000.0	995.6	990.6	990.6	2.4	2.1	157.71	-0.7	-460.0	517.5	513.3	4.24	122.056	
1,100.0	1,093.1	1,088.1	1,088.1	2.8	2.3	158.45	-0.7	-460.0	538.5	533.8	4.72	114.136	
1,200.0	1,189.6	1,184.6	1,184.6	3.3	2.6	159.24	-0.7	-460.0	562.7	557.5	5.20	108.128	
1,301.4	1,286.6	1,295.7	1,295.6	3.9	2.8	160.10	-1.9	-459.0	589.7	584.0	5.71	103.345	
1,400.0	1,380.4	1,407.6	1,407.4	4.5	3.0	160.83	-6.5	-455.2	615.0	608.8	6.20	99.158	
1,500.0	1,475.4	1,523.1	1,522.4	5.1	3.2	161.23	-14.7	-448.4	638.0	631.2	6.74	94.718	
1,600.0	1,570.5	1,640.2	1,638.5	5.7	3.5	161.31	-26.6	-438.4	658.1	650.8	7.31	90.058	
1,700.0	1,665.6	1,758.7	1,755.1	6.4	3.8	161.10	-42.4	-425.2	675.2	667.3	7.93	85.172	
1,800.0	1,760.7	1,867.3	1,861.4	7.0	4.1	160.69	-59.8	-410.7	689.8	681.3	8.57	80.455	
1,900.0	1,855.8	1,966.2	1,958.0	7.6	4.5	160.31	-76.0	-397.2	704.1	694.9	9.23	76.279	
2,000.0	1,950.9	2,065.1	2,054.6	8.3	4.9	159.94	-92.2	-383.7	718.5	708.6	9.91	72.522	
2,100.0	2,046.0	2,163.9	2,151.2	9.0	5.2	159.59	-108.4	-370.1	732.8	722.2	10.60	69.105	
2,200.0	2,141.1	2,262.8	2,247.8	9.6	5.6	159.25	-124.6	-356.6	747.2	735.9	11.32	66.017	
2,300.0	2,236.2	2,361.7	2,344.3	10.3	6.0	158.92	-140.8	-343.1	761.6	749.6	12.05	63.225	
2,400.0	2,331.3	2,460.5	2,440.9	10.9	6.5	158.60	-157.0	-329.5	776.1	763.3	12.79	60.694	
2,500.0	2,426.4	2,559.4	2,537.5	11.6	6.9	158.30	-173.1	-316.0	790.5	777.0	13.54	58.395 SF	

Company:	Synergy Resources	Local Co-ordinate Reference:	Well SRC Evans 43-26-23-14NHZ
Project:	SEC.26-T5N-R66W	TVD Reference:	WELL @ 4769.0ft (RKB - 15')
Reference Site:	SRC Evans East Pad Sec.26-T5N-R66W	MD Reference:	WELL @ 4769.0ft (RKB - 15')
Site Error:	0.0ft	North Reference:	True
Reference Well:	SRC Evans 43-26-23-14NHZ	Survey Calculation Method:	Minimum Curvature
Well Error:	0.0ft	Output errors are at	2.00 sigma
Reference Wellbore	Wellbore #1	Database:	Landmark
Reference Design:	Plan #1 (10-27-14)	Offset TVD Reference:	Offset Datum

Offset Design												Offset Site Error:	0.0 ft
SRC Evans Center Pad Sec.26-T5N-R66W - SRC Evans P-26-23-14CHZ - Wellbore #1 - Plan #1 (10-2												Offset Well Error:	0.0 ft
Survey Program: 0-MWD													
Reference		Offset		Semi Major Axis			Distance						
Measured Depth (ft)	Vertical Depth (ft)	Measured Depth (ft)	Vertical Depth (ft)	Reference (ft)	Offset (ft)	Highside Toolface (°)	Offset Wellbore Centre +N/-S (ft)	+E/-W (ft)	Between Centres (ft)	Between Ellipses (ft)	Minimum Separation (ft)	Separation Factor	Warning
0.0	0.0	0.0	0.0	0.0	0.0	-95.70	-45.9	-459.7	462.1				
100.0	100.0	94.0	94.0	0.1	0.1	-95.70	-45.9	-459.7	462.0	461.8	0.22	2,119.083	
200.0	200.0	194.0	194.0	0.3	0.3	-95.70	-45.9	-459.7	462.0	461.4	0.66	699.192	
300.0	300.0	294.0	294.0	0.6	0.5	-95.70	-45.9	-459.7	462.0	460.9	1.11	416.118	
400.0	400.0	394.0	394.0	0.8	0.8	-95.70	-45.9	-459.7	462.0	460.5	1.56	296.199 CC, ES	
500.0	500.0	494.0	494.0	1.0	1.0	149.73	-45.9	-459.7	463.5	461.5	1.99	232.533	
600.0	599.8	593.8	593.8	1.2	1.2	150.00	-45.9	-459.7	468.1	465.6	2.42	193.275	
700.0	699.5	693.5	693.5	1.4	1.4	150.45	-45.9	-459.7	475.6	472.8	2.86	166.142	
800.0	798.7	792.7	792.7	1.7	1.7	151.06	-45.9	-459.7	486.3	483.0	3.32	146.646	
900.0	897.5	897.9	897.9	2.0	1.9	151.67	-47.4	-459.0	499.5	495.7	3.77	132.562	
1,000.0	995.6	1,003.8	1,003.6	2.4	2.1	152.03	-52.4	-456.6	514.4	510.2	4.22	121.992	
1,100.0	1,093.1	1,109.8	1,109.2	2.8	2.3	152.14	-61.0	-452.6	531.0	526.3	4.71	112.835	
1,200.0	1,189.6	1,215.0	1,213.5	3.3	2.5	152.03	-73.0	-446.9	549.2	544.0	5.25	104.700	
1,301.4	1,286.6	1,314.2	1,311.8	3.9	2.8	151.91	-85.6	-440.9	570.2	564.4	5.83	97.790	
1,400.0	1,380.4	1,410.3	1,406.9	4.5	3.1	152.07	-97.8	-435.1	592.2	585.7	6.45	91.820	
1,500.0	1,475.4	1,507.8	1,503.4	5.1	3.4	152.21	-110.1	-429.3	614.4	607.3	7.10	86.575	
1,600.0	1,570.5	1,605.3	1,599.9	5.7	3.6	152.35	-122.5	-423.4	636.7	628.9	7.76	82.041	
1,700.0	1,665.6	1,702.7	1,696.4	6.4	4.0	152.48	-134.9	-417.5	658.9	650.5	8.43	78.120	
1,800.0	1,760.7	1,800.2	1,793.0	7.0	4.3	152.60	-147.3	-411.7	681.2	672.1	9.12	74.704	
1,900.0	1,855.8	1,897.7	1,889.5	7.6	4.6	152.71	-159.6	-405.8	703.5	693.7	9.81	71.714	
2,000.0	1,950.9	1,995.2	1,986.0	8.3	4.9	152.82	-172.0	-399.9	725.7	715.2	10.51	69.083	
2,100.0	2,046.0	2,092.7	2,082.5	9.0	5.2	152.92	-184.4	-394.0	748.0	736.8	11.21	66.754	
2,200.0	2,141.1	2,190.1	2,179.0	9.6	5.6	153.01	-196.7	-388.2	770.3	758.4	11.91	64.680	
2,300.0	2,236.2	2,287.6	2,275.5	10.3	5.9	153.10	-209.1	-382.3	792.6	779.9	12.62	62.824 SF	

SRC Evans East Pad Sec.26-T5N-R66W - SRC Evans 33-26-23-14CHZ - Wellbore #1 - Plan #1 (10-27)													Offset Site Error:	0.0 ft
Survey Program: 0-MWD													Offset Well Error:	0.0 ft
Reference		Offset		Semi Major Axis			Distance							
Measured Depth	Vertical Depth	Measured Depth	Vertical Depth	Reference	Offset	Highside Toolface	Offset Wellbore Centre		Between Centres	Between Ellipses	Minimum Separation	Separation Factor	Warning	
(ft)	(ft)	(ft)	(ft)	(ft)	(ft)	(°)	+N/-S (ft)	+E/-W (ft)	(ft)	(ft)	(ft)			
0.0	0.0	0.0	0.0	0.0	0.0	179.86	-112.6	0.3	112.6					
100.0	100.0	97.0	97.0	0.1	0.1	179.86	-112.6	0.3	112.6	112.4	0.22	508.455		
200.0	200.0	197.0	197.0	0.3	0.3	179.86	-112.6	0.3	112.6	111.9	0.67	168.634		
300.0	300.0	297.0	297.0	0.6	0.6	179.86	-112.6	0.3	112.6	111.5	1.12	100.773		
400.0	400.0	397.0	397.0	0.8	0.8	179.86	-112.6	0.3	112.6	111.0	1.57	71.857		
500.0	500.0	497.0	497.0	1.0	1.0	66.02	-112.6	0.3	111.9	109.9	2.00	55.947		
600.0	599.8	596.8	596.8	1.2	1.2	68.55	-112.6	0.3	109.8	107.4	2.43	45.212		
700.0	699.5	696.5	696.5	1.4	1.5	72.93	-112.6	0.3	106.9	104.1	2.88	37.091		
800.0	798.7	795.7	795.7	1.7	1.7	79.38	-112.6	0.3	104.0	100.6	3.37	30.836		
900.0	897.5	894.5	894.5	2.0	1.9	87.95	-112.6	0.3	102.3	98.3	3.91	26.155		
920.9	918.1	915.1	915.1	2.1	1.9	90.00	-112.6	0.3	102.2	98.2	4.03	25.342 CC, ES		
1,000.0	995.6	992.6	992.6	2.4	2.1	98.37	-112.6	0.3	103.3	98.8	4.49	23.004		
1,100.0	1,093.1	1,089.2	1,089.2	2.8	2.3	108.98	-113.8	1.0	109.3	104.3	5.07	21.545		
1,200.0	1,189.6	1,186.0	1,185.9	3.3	2.5	118.06	-117.8	3.4	120.9	115.2	5.65	21.407 SF		
1,301.4	1,286.6	1,284.5	1,284.1	3.9	2.7	125.26	-124.7	7.5	137.3	131.0	6.24	21.999		
1,400.0	1,380.4	1,380.9	1,379.8	4.5	2.9	130.29	-134.3	13.2	155.7	148.8	6.84	22.755		
1,500.0	1,475.4	1,478.5	1,476.5	5.1	3.1	133.84	-145.2	19.6	175.0	167.5	7.47	23.425		
1,600.0	1,570.5	1,576.1	1,573.3	5.7	3.4	136.68	-156.1	26.1	194.9	186.8	8.11	24.040		
1,700.0	1,665.6	1,673.7	1,670.1	6.4	3.6	139.00	-167.0	32.6	215.1	206.4	8.75	24.594		
1,800.0	1,760.7	1,771.3	1,766.8	7.0	3.9	140.91	-177.9	39.0	235.7	226.3	9.39	25.092		
1,900.0	1,855.8	1,868.9	1,863.6	7.6	4.2	142.52	-188.8	45.5	256.4	246.4	10.04	25.542		
2,000.0	1,950.9	1,966.4	1,960.4	8.3	4.5	143.89	-199.7	51.9	277.3	266.6	10.69	25.940		
2,100.0	2,046.0	2,064.0	2,057.1	9.0	4.8	145.06	-210.6	58.4	298.4	287.0	11.34	26.300		
2,200.0	2,141.1	2,161.6	2,153.9	9.6	5.1	146.09	-221.5	64.9	319.5	307.5	12.00	26.626		
2,300.0	2,236.2	2,259.2	2,250.7	10.3	5.4	146.98	-232.4	71.3	340.7	328.1	12.66	26.921		
2,400.0	2,331.3	2,356.8	2,347.4	10.9	5.7	147.77	-243.3	77.8	362.0	348.7	13.32	27.188		
2,500.0	2,426.4	2,454.4	2,444.2	11.6	6.0	148.47	-254.2	84.2	383.4	369.4	13.98	27.432		
2,600.0	2,521.4	2,552.0	2,541.0	12.2	6.3	149.10	-265.1	90.7	404.8	390.2	14.64	27.655		
2,700.0	2,616.5	2,649.6	2,637.7	12.9	6.6	149.66	-276.0	97.2	426.3	411.0	15.30	27.860		
2,800.0	2,711.6	2,747.2	2,734.5	13.6	6.9	150.18	-286.9	103.6	447.7	431.8	15.96	28.048		
2,900.0	2,806.7	2,844.8	2,831.2	14.2	7.2	150.64	-297.8	110.1	469.3	452.6	16.63	28.222		
3,000.0	2,901.8	2,942.3	2,928.0	14.9	7.6	151.06	-308.7	116.6	490.8	473.5	17.29	28.383		
3,100.0	2,996.9	3,039.9	3,024.8	15.5	7.9	151.45	-319.6	123.0	512.4	494.4	17.96	28.532		
3,200.0	3,092.0	3,137.5	3,121.5	16.2	8.2	151.81	-330.5	129.5	534.0	515.3	18.62	28.670		
3,300.0	3,187.1	3,235.1	3,218.3	16.9	8.5	152.14	-341.4	135.9	555.6	536.3	19.29	28.799		
3,400.0	3,282.2	3,332.7	3,315.1	17.5	8.8	152.44	-352.3	142.4	577.2	557.2	19.96	28.920		
3,500.0	3,377.3	3,430.3	3,411.8	18.2	9.2	152.72	-363.2	148.9	598.8	578.2	20.63	29.033		
3,600.0	3,472.3	3,527.9	3,508.6	18.8	9.5	152.99	-374.1	155.3	620.5	599.2	21.29	29.139		
3,700.0	3,567.4	3,625.5	3,605.4	19.5	9.8	153.23	-385.0	161.8	642.1	620.2	21.96	29.238		
3,800.0	3,662.5	3,723.1	3,702.1	20.2	10.1	153.46	-395.9	168.3	663.8	641.2	22.63	29.332		
3,900.0	3,757.6	3,820.7	3,798.9	20.8	10.5	153.67	-406.8	174.7	685.5	662.2	23.30	29.420		
4,000.0	3,852.7	3,918.3	3,895.7	21.5	10.8	153.88	-417.7	181.2	707.2	683.2	23.97	29.503		
4,100.0	3,947.8	4,015.8	3,992.4	22.2	11.1	154.06	-428.6	187.6	728.9	704.2	24.64	29.582		
4,200.0	4,042.9	4,113.4	4,089.2	22.8	11.4	154.24	-439.5	194.1	750.6	725.3	25.31	29.657		
4,300.0	4,138.0	4,211.0	4,185.9	23.5	11.8	154.41	-450.4	200.6	772.3	746.3	25.98	29.727		
4,400.0	4,233.1	4,308.6	4,282.7	24.2	12.1	154.57	-461.3	207.0	794.0	767.4	26.65	29.794		

Company:	Synergy Resources	Local Co-ordinate Reference:	Well SRC Evans 43-26-23-14NHZ
Project:	SEC.26-T5N-R66W	TVD Reference:	WELL @ 4769.0ft (RKB - 15')
Reference Site:	SRC Evans East Pad Sec.26-T5N-R66W	MD Reference:	WELL @ 4769.0ft (RKB - 15')
Site Error:	0.0ft	North Reference:	True
Reference Well:	SRC Evans 43-26-23-14NHZ	Survey Calculation Method:	Minimum Curvature
Well Error:	0.0ft	Output errors are at	2.00 sigma
Reference Wellbore	Wellbore #1	Database:	Landmark
Reference Design:	Plan #1 (10-27-14)	Offset TVD Reference:	Offset Datum

Offset Design													Offset Site Error:	0.0 ft
Survey Program: 0-MWD													Offset Well Error:	0.0 ft
Reference		Offset		Semi Major Axis			Distance							Warning
Measured Depth (ft)	Vertical Depth (ft)	Measured Depth (ft)	Vertical Depth (ft)	Reference (ft)	Offset (ft)	Highside Toolface (°)	Offset Wellbore Centre +N/-S (ft)	+E/-W (ft)	Between Centres (ft)	Between Ellipses (ft)	Minimum Separation (ft)	Separation Factor		
0.0	0.0	1.0	1.0	0.0	0.0	0.00	22.2	0.0	22.2	22.2	0.00	N/A		
100.0	100.0	101.0	101.0	0.1	0.1	0.00	22.2	0.0	22.2	22.0	0.23	97.892		
200.0	200.0	201.0	201.0	0.3	0.3	0.00	22.2	0.0	22.2	21.5	0.68	32.854		
300.0	300.0	301.3	301.2	0.6	0.6	4.40	21.5	1.7	21.6	20.5	1.11	19.432		
400.0	400.0	401.3	401.1	0.8	0.8	18.50	19.6	6.5	20.6	19.1	1.56	13.257		
417.4	417.4	418.6	418.4	0.8	0.8	-92.78	19.1	7.7	20.6	19.0	1.63	12.606 CC, ES		
500.0	500.0	500.9	500.4	1.0	1.0	-77.13	16.3	14.6	21.4	19.4	2.01	10.669		
600.0	599.8	600.4	599.1	1.2	1.3	-61.29	11.7	25.9	24.5	22.0	2.48	9.859		
700.0	699.5	699.6	697.0	1.4	1.6	-49.83	5.9	40.3	29.0	26.0	2.98	9.740		
800.0	798.7	798.5	794.2	1.7	2.0	-41.91	-1.2	57.7	34.5	31.0	3.50	9.859		
900.0	897.5	897.2	890.4	2.0	2.5	-36.43	-9.5	78.2	40.4	36.4	4.04	10.022		
1,000.0	995.6	995.7	985.5	2.4	3.0	-32.58	-19.1	101.7	46.7	42.1	4.60	10.154		
1,100.0	1,093.1	1,094.0	1,079.5	2.8	3.5	-29.81	-29.8	128.2	53.2	48.0	5.20	10.231		
1,200.0	1,189.6	1,193.0	1,173.4	3.3	4.2	-27.99	-41.7	157.4	59.3	53.5	5.84	10.155		
1,301.4	1,286.6	1,294.4	1,269.4	3.9	4.8	-27.82	-54.0	187.6	62.7	56.1	6.57	9.544		
1,400.0	1,380.4	1,392.9	1,362.7	4.5	5.5	-28.42	-65.9	217.0	64.4	57.1	7.36	8.751		
1,500.0	1,475.4	1,492.9	1,457.4	5.1	6.2	-29.00	-78.0	246.8	66.2	58.0	8.20	8.079		
1,600.0	1,570.5	1,592.9	1,552.1	5.7	6.9	-29.55	-90.1	276.6	68.0	59.0	9.06	7.513		
1,700.0	1,665.6	1,692.9	1,646.7	6.4	7.5	-30.07	-102.2	306.4	69.8	59.9	9.93	7.032		
1,800.0	1,760.7	1,792.9	1,741.4	7.0	8.2	-30.56	-114.3	336.2	71.6	60.8	10.82	6.620		
1,900.0	1,855.8	1,892.9	1,836.1	7.6	8.9	-31.03	-126.4	366.0	73.5	61.7	11.73	6.263		
2,000.0	1,950.9	1,992.8	1,930.7	8.3	9.6	-31.48	-138.5	395.8	75.3	62.6	12.65	5.952		
2,100.0	2,046.0	2,092.8	2,025.4	9.0	10.3	-31.91	-150.6	425.6	77.1	63.5	13.58	5.678		
2,200.0	2,141.1	2,192.8	2,120.1	9.6	11.0	-32.31	-162.7	455.4	78.9	64.4	14.52	5.436		
2,300.0	2,236.2	2,292.8	2,214.7	10.3	11.6	-32.70	-174.8	485.2	80.7	65.3	15.47	5.221		
2,400.0	2,331.3	2,392.8	2,309.4	10.9	12.3	-33.07	-186.9	515.0	82.6	66.2	16.42	5.028		
2,500.0	2,426.4	2,492.7	2,404.1	11.6	13.0	-33.43	-199.0	544.8	84.4	67.0	17.39	4.854		
2,600.0	2,521.4	2,592.7	2,498.7	12.2	13.7	-33.77	-211.1	574.5	86.3	67.9	18.36	4.697		
2,700.0	2,616.5	2,692.7	2,593.4	12.9	14.4	-34.09	-223.2	604.3	88.1	68.8	19.34	4.555		
2,800.0	2,711.6	2,792.7	2,688.1	13.6	15.1	-34.40	-235.3	634.1	89.9	69.6	20.33	4.425		
2,900.0	2,806.7	2,892.7	2,782.8	14.2	15.8	-34.70	-247.4	663.9	91.8	70.5	21.32	4.306		
3,000.0	2,901.8	2,992.7	2,877.4	14.9	16.5	-34.99	-259.5	693.7	93.6	71.3	22.31	4.196		
3,100.0	2,996.9	3,092.6	2,972.1	15.5	17.1	-35.27	-271.6	723.5	95.5	72.2	23.32	4.096		
3,200.0	3,092.0	3,192.6	3,066.8	16.2	17.8	-35.53	-283.7	753.3	97.3	73.0	24.32	4.003		
3,300.0	3,187.1	3,292.6	3,161.4	16.9	18.5	-35.79	-295.8	783.1	99.2	73.9	25.33	3.916		
3,400.0	3,282.2	3,392.6	3,256.1	17.5	19.2	-36.03	-307.9	812.9	101.1	74.7	26.34	3.836		
3,500.0	3,377.3	3,492.6	3,350.8	18.2	19.9	-36.27	-320.0	842.7	102.9	75.6	27.36	3.761		
3,600.0	3,472.3	3,592.5	3,445.4	18.8	20.6	-36.50	-332.1	872.5	104.8	76.4	28.38	3.692		
3,700.0	3,567.4	3,692.5	3,540.1	19.5	21.3	-36.72	-344.2	902.3	106.6	77.2	29.41	3.627		
3,800.0	3,662.5	3,792.5	3,634.8	20.2	22.0	-36.94	-356.3	932.1	108.5	78.1	30.43	3.565		
3,900.0	3,757.6	3,892.5	3,729.4	20.8	22.7	-37.14	-368.4	961.9	110.4	78.9	31.46	3.508		
4,000.0	3,852.7	3,992.5	3,824.1	21.5	23.4	-37.34	-380.5	991.7	112.2	79.7	32.50	3.454		
4,100.0	3,947.8	4,092.5	3,918.8	22.2	24.0	-37.53	-392.6	1,021.5	114.1	80.6	33.53	3.403		
4,200.0	4,042.9	4,192.4	4,013.4	22.8	24.7	-37.72	-404.7	1,051.3	116.0	81.4	34.57	3.355		
4,300.0	4,138.0	4,292.4	4,108.1	23.5	25.4	-37.90	-416.8	1,081.1	117.9	82.2	35.61	3.310		
4,400.0	4,233.1	4,392.4	4,202.8	24.2	26.1	-38.08	-428.9	1,110.9	119.7	83.1	36.65	3.267		
4,500.0	4,328.2	4,492.4	4,297.4	24.8	26.8	-38.25	-441.0	1,140.7	121.6	83.9	37.70	3.226		
4,600.0	4,423.3	4,592.4	4,392.1	25.5	27.5	-38.41	-453.1	1,170.5	123.5	84.7	38.74	3.187		
4,700.0	4,518.3	4,692.3	4,486.8	26.1	28.2	-38.57	-465.2	1,200.3	125.3	85.6	39.79	3.150		
4,800.0	4,613.4	4,792.3	4,581.4	26.8	28.9	-38.73	-477.3	1,230.1	127.2	86.4	40.84	3.115		
4,900.0	4,708.5	4,892.3	4,676.1	27.5	29.6	-38.88	-489.5	1,259.9	129.1	87.2	41.89	3.082		
5,000.0	4,803.6	4,992.3	4,770.8	28.1	30.3	-39.02	-501.6	1,289.7	131.0	88.0	42.95	3.050		

CC - Min centre to center distance or convergent point, SF - min separation factor, ES - min ellipse separation

Company:	Synergy Resources	Local Co-ordinate Reference:	Well SRC Evans 43-26-23-14NHZ
Project:	SEC.26-T5N-R66W	TVD Reference:	WELL @ 4769.0ft (RKB - 15')
Reference Site:	SRC Evans East Pad Sec.26-T5N-R66W	MD Reference:	WELL @ 4769.0ft (RKB - 15')
Site Error:	0.0ft	North Reference:	True
Reference Well:	SRC Evans 43-26-23-14NHZ	Survey Calculation Method:	Minimum Curvature
Well Error:	0.0ft	Output errors are at	2.00 sigma
Reference Wellbore	Wellbore #1	Database:	Landmark
Reference Design:	Plan #1 (10-27-14)	Offset TVD Reference:	Offset Datum

Offset Design													Offset Site Error:	0.0 ft
Survey Program: 0-MWD													Offset Well Error:	0.0 ft
Reference		Offset		Semi Major Axis			Distance							Warning
Measured Depth (ft)	Vertical Depth (ft)	Measured Depth (ft)	Vertical Depth (ft)	Reference (ft)	Offset (ft)	Highside Toolface (°)	Offset Wellbore Centre +N/-S (ft)	+E/-W (ft)	Between Centres (ft)	Between Ellipses (ft)	Minimum Separation (ft)	Separation Factor		
5,100.0	4,898.7	5,092.3	4,865.5	28.8	31.0	-39.16	-513.7	1,319.5	132.9	88.9	44.00	3.019		
5,200.0	4,993.8	5,192.3	4,960.1	29.5	31.6	-39.30	-525.8	1,349.3	134.7	89.7	45.06	2.990		
5,300.0	5,088.9	5,292.2	5,054.8	30.1	32.3	-39.44	-537.9	1,379.1	136.6	90.5	46.12	2.963		
5,400.0	5,184.0	5,392.2	5,149.5	30.8	33.0	-39.57	-550.0	1,408.9	138.5	91.3	47.18	2.936		
5,500.0	5,279.1	5,492.2	5,244.1	31.5	33.7	-39.69	-562.1	1,438.6	140.4	92.1	48.24	2.910		
5,600.0	5,374.2	5,592.2	5,338.8	32.1	34.4	-39.82	-574.2	1,468.4	142.3	93.0	49.30	2.886		
5,700.0	5,469.2	5,692.2	5,433.5	32.8	35.1	-39.94	-586.3	1,498.2	144.2	93.8	50.36	2.862		
5,800.0	5,564.3	5,792.1	5,528.1	33.5	35.8	-40.06	-598.4	1,528.0	146.0	94.6	51.42	2.840		
5,900.0	5,659.4	5,892.1	5,622.8	34.1	36.5	-40.17	-610.5	1,557.8	147.9	95.4	52.49	2.818		
6,000.0	5,754.5	5,992.1	5,717.5	34.8	37.2	-40.28	-622.6	1,587.6	149.8	96.3	53.56	2.797		
6,100.0	5,849.6	6,092.1	5,812.1	35.5	37.9	-40.39	-634.7	1,617.4	151.7	97.1	54.62	2.777		
6,200.0	5,944.7	6,192.1	5,906.8	36.1	38.6	-40.50	-646.8	1,647.2	153.6	97.9	55.69	2.758		
6,300.0	6,039.8	6,292.1	6,001.5	36.8	39.2	-40.60	-658.9	1,677.0	155.5	98.7	56.76	2.739		
6,357.0	6,094.0	6,349.0	6,055.4	37.2	39.6	-40.66	-665.8	1,694.0	156.5	99.2	57.37	2.729		
6,400.0	6,135.0	6,392.0	6,096.1	37.4	39.9	-29.90	-671.0	1,706.8	157.0	99.5	57.49	2.731		
6,450.0	6,182.9	6,441.8	6,143.3	37.7	40.3	-14.99	-677.0	1,721.7	156.6	99.9	56.68	2.763		
6,500.0	6,230.8	6,491.2	6,190.0	37.9	40.6	1.20	-683.0	1,736.4	155.6	100.7	54.91	2.834		
6,550.0	6,278.5	6,539.9	6,236.1	38.1	41.0	17.26	-688.9	1,750.9	154.5	102.2	52.29	2.955		
6,596.5	6,322.4	6,584.4	6,278.2	38.2	41.3	31.38	-694.2	1,764.1	154.0	104.7	49.30	3.124		
6,600.0	6,325.7	6,587.7	6,281.4	38.2	41.3	32.41	-694.7	1,765.1	154.0	105.0	49.06	3.139		
6,650.0	6,372.3	6,634.4	6,325.6	38.4	41.6	46.41	-700.3	1,779.0	155.1	109.4	45.66	3.396		
6,700.0	6,417.9	6,679.7	6,368.5	38.5	41.9	59.21	-705.8	1,792.5	158.8	116.1	42.65	3.723		
6,750.0	6,462.3	6,723.4	6,409.9	38.6	42.2	70.76	-711.1	1,805.6	166.1	125.6	40.49	4.103		
6,800.0	6,505.4	6,767.5	6,451.7	38.7	42.5	81.26	-716.2	1,818.7	177.8	138.5	39.22	4.533		
6,850.0	6,546.9	6,815.7	6,497.6	38.8	42.8	90.77	-719.1	1,833.2	192.9	154.2	38.66	4.989		
6,900.0	6,586.7	6,866.1	6,545.7	38.8	43.0	98.94	-718.7	1,848.3	210.5	172.1	38.44	5.476		
6,950.0	6,624.5	6,919.1	6,596.0	38.8	43.2	105.94	-714.5	1,864.1	230.1	191.9	38.17	6.028		
7,000.0	6,660.1	6,975.0	6,648.7	38.8	43.5	111.94	-705.8	1,880.7	250.9	213.3	37.61	6.672		
7,050.0	6,693.4	7,034.3	6,703.7	38.8	43.7	117.09	-692.0	1,897.9	272.5	235.9	36.67	7.432		
7,100.0	6,724.3	7,097.5	6,760.8	38.8	43.9	121.54	-672.0	1,915.9	294.4	259.1	35.36	8.328		
7,150.0	6,752.4	7,165.1	6,819.9	38.7	44.0	125.38	-644.9	1,934.4	316.2	282.5	33.70	9.381		
7,200.0	6,777.9	7,237.7	6,880.3	38.7	44.1	128.69	-609.4	1,953.3	337.3	305.5	31.79	10.610		
7,250.0	6,800.4	7,315.8	6,941.1	38.6	44.2	131.54	-564.2	1,972.4	357.4	327.7	29.72	12.026		
7,300.0	6,819.9	7,400.1	7,001.1	38.6	44.3	133.96	-508.1	1,991.1	376.0	348.4	27.61	13.616		
7,350.0	6,836.3	7,490.8	7,058.0	38.5	44.3	135.98	-439.9	2,008.9	392.5	366.9	25.65	15.305		
7,400.0	6,849.5	7,587.8	7,109.4	38.4	44.2	137.60	-359.2	2,024.9	406.6	382.5	24.02	16.926		
7,450.0	6,859.5	7,690.8	7,152.0	38.4	44.1	138.82	-266.5	2,038.1	417.6	394.6	22.97	18.182		
7,500.0	6,866.2	7,798.6	7,182.5	38.3	44.0	139.63	-163.7	2,047.5	425.1	402.4	22.70	18.724		
7,550.0	6,869.6	7,909.5	7,198.2	38.2	43.9	140.02	-54.1	2,052.2	428.8	405.4	23.36	18.350		
7,575.2	6,870.0	7,963.3	7,200.0	38.2	43.8	140.06	-0.4	2,052.7	429.1	405.1	24.04	17.852		
7,600.0	6,870.0	7,988.1	7,200.0	38.1	43.8	140.06	24.4	2,052.6	429.1	405.0	24.11	17.797		
7,700.0	6,870.0	8,088.1	7,200.0	38.0	43.6	140.06	124.4	2,052.4	429.1	404.6	24.55	17.483		
7,800.0	6,870.0	8,188.1	7,200.0	38.0	43.6	140.06	224.4	2,052.2	429.1	403.9	25.26	16.991		
7,900.0	6,870.0	8,288.1	7,200.0	38.0	43.5	140.05	324.4	2,051.9	429.1	402.9	26.23	16.361		
8,000.0	6,870.0	8,388.1	7,200.0	38.1	43.6	140.05	424.4	2,051.7	429.1	401.7	27.44	15.642		
8,100.0	6,870.0	8,488.1	7,200.0	38.2	43.7	140.05	524.4	2,051.5	429.2	400.3	28.85	14.876		
8,200.0	6,870.0	8,588.1	7,200.0	38.5	43.9	140.05	624.4	2,051.2	429.2	398.7	30.44	14.101		
8,300.0	6,870.0	8,688.1	7,200.0	38.9	44.1	140.05	724.4	2,051.0	429.2	397.0	32.17	13.339		
8,400.0	6,870.0	8,788.1	7,200.0	39.4	44.5	140.05	824.4	2,050.8	429.2	395.1	34.04	12.608		
8,500.0	6,870.0	8,888.1	7,200.0	40.0	44.9	140.05	924.4	2,050.5	429.2	393.2	36.01	11.918		
8,600.0	6,870.0	8,988.1	7,200.0	40.7	45.4	140.05	1,024.4	2,050.3	429.2	391.1	38.07	11.272		
8,700.0	6,870.0	9,088.1	7,200.0	41.5	46.1	140.05	1,124.4	2,050.1	429.2	389.0	40.22	10.672		

CC - Min centre to center distance or convergent point, SF - min separation factor, ES - min ellipse separation

Company:	Synergy Resources	Local Co-ordinate Reference:	Well SRC Evans 43-26-23-14NHZ
Project:	SEC.26-T5N-R66W	TVD Reference:	WELL @ 4769.0ft (RKB - 15')
Reference Site:	SRC Evans East Pad Sec.26-T5N-R66W	MD Reference:	WELL @ 4769.0ft (RKB - 15')
Site Error:	0.0ft	North Reference:	True
Reference Well:	SRC Evans 43-26-23-14NHZ	Survey Calculation Method:	Minimum Curvature
Well Error:	0.0ft	Output errors are at	2.00 sigma
Reference Wellbore	Wellbore #1	Database:	Landmark
Reference Design:	Plan #1 (10-27-14)	Offset TVD Reference:	Offset Datum

Offset Design												Offset Site Error:	0.0 ft
Survey Program: 0-MWID												Offset Well Error:	0.0 ft
Reference		Offset		Semi Major Axis			Distance						Warning
Measured Depth (ft)	Vertical Depth (ft)	Measured Depth (ft)	Vertical Depth (ft)	Reference (ft)	Offset (ft)	Highside Toolface (°)	Offset Wellbore Centre +N/-S (ft)	+E/-W (ft)	Between Centres (ft)	Between Ellipses (ft)	Minimum Separation (ft)	Separation Factor	
8,800.0	6,870.0	9,188.1	7,200.0	42.5	46.8	140.04	1,224.4	2,049.8	429.2	386.8	42.42	10.118	
8,900.0	6,870.0	9,288.1	7,200.0	43.6	47.6	140.04	1,324.4	2,049.6	429.2	384.5	44.68	9.606	
9,000.0	6,870.0	9,388.1	7,200.0	44.7	48.5	140.04	1,424.4	2,049.4	429.2	382.2	46.99	9.134	
9,100.0	6,870.0	9,488.1	7,200.0	45.9	49.5	140.04	1,524.4	2,049.1	429.2	379.9	49.34	8.699	
9,200.0	6,870.0	9,588.1	7,200.0	47.2	50.6	140.04	1,624.4	2,048.9	429.2	377.5	51.73	8.298	
9,300.0	6,870.0	9,688.1	7,200.0	48.6	51.8	140.04	1,724.4	2,048.7	429.2	375.1	54.14	7.928	
9,400.0	6,870.0	9,788.1	7,200.0	49.9	53.0	140.04	1,824.4	2,048.4	429.2	372.7	56.59	7.586	
9,500.0	6,870.0	9,888.1	7,200.0	51.4	54.3	140.04	1,924.4	2,048.2	429.2	370.2	59.05	7.269	
9,600.0	6,870.0	9,988.1	7,200.0	52.9	55.6	140.04	2,024.4	2,048.0	429.3	367.7	61.54	6.975	
9,700.0	6,870.0	10,088.1	7,200.0	54.4	57.0	140.03	2,124.4	2,047.7	429.3	365.2	64.05	6.702	
9,800.0	6,870.0	10,188.1	7,200.0	55.9	58.4	140.03	2,224.4	2,047.5	429.3	362.7	66.57	6.449	
9,900.0	6,870.0	10,288.1	7,200.0	57.5	59.9	140.03	2,324.4	2,047.3	429.3	360.2	69.10	6.212	
10,000.0	6,870.0	10,388.1	7,200.0	59.1	61.4	140.03	2,424.4	2,047.0	429.3	357.6	71.65	5.991	
10,100.0	6,870.0	10,488.1	7,200.0	60.7	62.9	140.03	2,524.4	2,046.8	429.3	355.1	74.21	5.785	
10,200.0	6,870.0	10,588.1	7,200.0	62.4	64.4	140.03	2,624.4	2,046.6	429.3	352.5	76.78	5.591	
10,300.0	6,870.0	10,688.1	7,200.0	64.0	66.0	140.03	2,724.4	2,046.3	429.3	349.9	79.37	5.409	
10,400.0	6,870.0	10,788.1	7,200.0	65.7	67.6	140.03	2,824.4	2,046.1	429.3	347.4	81.95	5.238	
10,500.0	6,870.0	10,888.1	7,200.0	67.4	69.2	140.03	2,924.4	2,045.9	429.3	344.8	84.55	5.078	
10,600.0	6,870.0	10,988.1	7,200.0	69.1	70.8	140.02	3,024.4	2,045.6	429.3	342.2	87.16	4.926	
10,700.0	6,870.0	11,088.1	7,200.0	70.8	72.5	140.02	3,124.4	2,045.4	429.3	339.6	89.77	4.783	
10,800.0	6,870.0	11,188.1	7,200.0	72.5	74.2	140.02	3,224.4	2,045.2	429.3	337.0	92.38	4.647	
10,900.0	6,870.0	11,288.1	7,200.0	74.3	75.8	140.02	3,324.4	2,044.9	429.3	334.3	95.00	4.519	
11,000.0	6,870.0	11,388.1	7,200.0	76.0	77.5	140.02	3,424.4	2,044.7	429.4	331.7	97.63	4.398	
11,100.0	6,870.0	11,488.1	7,200.0	77.7	79.2	140.02	3,524.4	2,044.5	429.4	329.1	100.26	4.282	
11,200.0	6,870.0	11,588.1	7,200.0	79.5	80.9	140.02	3,624.4	2,044.2	429.4	326.5	102.90	4.173	
11,300.0	6,870.0	11,688.1	7,200.0	81.3	82.7	140.02	3,724.4	2,044.0	429.4	323.8	105.54	4.068	
11,400.0	6,870.0	11,788.1	7,200.0	83.0	84.4	140.02	3,824.4	2,043.8	429.4	321.2	108.18	3.969	
11,500.0	6,870.0	11,888.1	7,200.0	84.8	86.1	140.01	3,924.4	2,043.5	429.4	318.6	110.83	3.874	
11,600.0	6,870.0	11,988.1	7,200.0	86.6	87.9	140.01	4,024.4	2,043.3	429.4	315.9	113.48	3.784	
11,700.0	6,870.0	12,088.1	7,200.0	88.4	89.6	140.01	4,124.4	2,043.1	429.4	313.3	116.13	3.697	
11,800.0	6,870.0	12,188.1	7,200.0	90.2	91.4	140.01	4,224.4	2,042.8	429.4	310.6	118.79	3.615	
11,900.0	6,870.0	12,288.1	7,200.0	92.0	93.2	140.01	4,324.4	2,042.6	429.4	308.0	121.45	3.536	
12,000.0	6,870.0	12,388.1	7,200.0	93.8	94.9	140.01	4,424.4	2,042.4	429.4	305.3	124.11	3.460	
12,100.0	6,870.0	12,488.1	7,200.0	95.6	96.7	140.01	4,524.4	2,042.1	429.4	302.7	126.77	3.387	
12,200.0	6,870.0	12,588.1	7,200.0	97.4	98.5	140.01	4,624.4	2,041.9	429.4	300.0	129.44	3.318	
12,300.0	6,870.0	12,688.1	7,200.0	99.2	100.3	140.01	4,724.4	2,041.7	429.4	297.3	132.11	3.251	
12,400.0	6,870.0	12,788.1	7,200.0	101.1	102.1	140.00	4,824.4	2,041.4	429.4	294.7	134.77	3.186	
12,500.0	6,870.0	12,888.1	7,200.0	102.9	103.9	140.00	4,924.4	2,041.2	429.5	292.0	137.45	3.125	
12,600.0	6,870.0	12,988.1	7,200.0	104.7	105.7	140.00	5,024.4	2,041.0	429.5	289.3	140.12	3.065	
12,700.0	6,870.0	13,088.1	7,200.0	106.6	107.5	140.00	5,124.4	2,040.7	429.5	286.7	142.79	3.008	
12,800.0	6,870.0	13,188.1	7,200.0	108.4	109.3	140.00	5,224.4	2,040.5	429.5	284.0	145.47	2.952	
12,900.0	6,870.0	13,288.1	7,200.0	110.2	111.1	140.00	5,324.4	2,040.3	429.5	281.3	148.15	2.899	
13,000.0	6,870.0	13,388.1	7,200.0	112.1	112.9	140.00	5,424.4	2,040.0	429.5	278.7	150.83	2.848	
13,100.0	6,870.0	13,488.1	7,200.0	113.9	114.8	140.00	5,524.4	2,039.8	429.5	276.0	153.51	2.798	
13,200.0	6,870.0	13,588.1	7,200.0	115.8	116.6	140.00	5,624.4	2,039.6	429.5	273.3	156.19	2.750	
13,300.0	6,870.0	13,688.1	7,200.0	117.6	118.4	139.99	5,724.4	2,039.3	429.5	270.6	158.87	2.704	
13,400.0	6,870.0	13,788.1	7,200.0	119.5	120.2	139.99	5,824.4	2,039.1	429.5	268.0	161.56	2.659	
13,500.0	6,870.0	13,888.1	7,200.0	121.3	122.1	139.99	5,924.4	2,038.9	429.5	265.3	164.24	2.615	
13,600.0	6,870.0	13,988.1	7,200.0	123.2	123.9	139.99	6,024.4	2,038.6	429.5	262.6	166.93	2.573	
13,700.0	6,870.0	14,088.1	7,200.0	125.0	125.8	139.99	6,124.4	2,038.4	429.5	259.9	169.61	2.532	
13,800.0	6,870.0	14,188.1	7,200.0	126.9	127.6	139.99	6,224.4	2,038.2	429.5	257.2	172.30	2.493	
13,900.0	6,870.0	14,288.1	7,200.0	128.7	129.4	139.99	6,324.4	2,037.9	429.6	254.6	174.99	2.455	

CC - Min centre to center distance or convergent point, SF - min separation factor, ES - min ellipse separation

SRC Evans East Pad Sec.26-T5N-R66W - SRC Evans 43-26-23-14CHZ - Wellbore #1 - Plan #1 (10-27)													Offset Site Error:	0.0 ft
Survey Program: 0-MWD													Offset Well Error:	0.0 ft
Reference		Offset		Semi Major Axis			Distance							
Measured Depth (ft)	Vertical Depth (ft)	Measured Depth (ft)	Vertical Depth (ft)	Reference (ft)	Offset (ft)	Highside Toolface (°)	Offset Wellbore Centre +N/-S (ft)	Offset Wellbore Centre +E/-W (ft)	Between Centres (ft)	Between Ellipses (ft)	Minimum Separation (ft)	Separation Factor	Warning	
14,000.0	6,870.0	14,388.1	7,200.0	130.6	131.3	139.99	6,424.4	2,037.7	429.6	251.9	177.68	2.418		
14,100.0	6,870.0	14,488.1	7,200.0	132.5	133.1	139.99	6,524.4	2,037.5	429.6	249.2	180.37	2.382		
14,200.0	6,870.0	14,588.1	7,200.0	134.3	135.0	139.98	6,624.4	2,037.2	429.6	246.5	183.06	2.347		
14,300.0	6,870.0	14,688.1	7,200.0	136.2	136.8	139.98	6,724.4	2,037.0	429.6	243.8	185.76	2.313		
14,400.0	6,870.0	14,788.1	7,200.0	138.1	138.7	139.98	6,824.4	2,036.8	429.6	241.1	188.45	2.280		
14,500.0	6,870.0	14,888.1	7,200.0	139.9	140.5	139.98	6,924.4	2,036.5	429.6	238.5	191.14	2.247		
14,600.0	6,870.0	14,988.1	7,200.0	141.8	142.4	139.98	7,024.4	2,036.3	429.6	235.8	193.84	2.216		
14,700.0	6,870.0	15,088.1	7,200.0	143.7	144.3	139.98	7,124.4	2,036.1	429.6	233.1	196.53	2.186		
14,800.0	6,870.0	15,188.1	7,200.0	145.6	146.1	139.98	7,224.4	2,035.8	429.6	230.4	199.23	2.156		
14,900.0	6,870.0	15,288.1	7,200.0	147.4	148.0	139.98	7,324.4	2,035.6	429.6	227.7	201.93	2.128		
15,000.0	6,870.0	15,388.1	7,200.0	149.3	149.9	139.98	7,424.4	2,035.4	429.6	225.0	204.62	2.100		
15,100.0	6,870.0	15,488.1	7,200.0	151.2	151.7	139.97	7,524.4	2,035.1	429.6	222.3	207.32	2.072		
15,200.0	6,870.0	15,588.1	7,200.0	153.1	153.6	139.97	7,624.4	2,034.9	429.6	219.6	210.02	2.046		
15,300.0	6,870.0	15,688.1	7,200.0	154.9	155.5	139.97	7,724.4	2,034.7	429.7	216.9	212.72	2.020		
15,400.0	6,870.0	15,788.1	7,200.0	156.8	157.3	139.97	7,824.4	2,034.4	429.7	214.2	215.42	1.995		
15,500.0	6,870.0	15,888.1	7,200.0	158.7	159.2	139.97	7,924.4	2,034.2	429.7	211.5	218.12	1.970		
15,600.0	6,870.0	15,988.1	7,200.0	160.6	161.1	139.97	8,024.4	2,034.0	429.7	208.9	220.82	1.946		
15,700.0	6,870.0	16,088.1	7,200.0	162.5	162.9	139.97	8,124.4	2,033.7	429.7	206.2	223.52	1.922		
15,800.0	6,870.0	16,188.1	7,200.0	164.3	164.8	139.97	8,224.4	2,033.5	429.7	203.5	226.22	1.899		
15,900.0	6,870.0	16,288.1	7,200.0	166.2	166.7	139.97	8,324.4	2,033.3	429.7	200.8	228.92	1.877		
16,000.0	6,870.0	16,388.1	7,200.0	168.1	168.6	139.96	8,424.4	2,033.0	429.7	198.1	231.62	1.855		
16,100.0	6,870.0	16,488.1	7,200.0	170.0	170.4	139.96	8,524.4	2,032.8	429.7	195.4	234.33	1.834		
16,200.0	6,870.0	16,588.1	7,200.0	171.9	172.3	139.96	8,624.4	2,032.6	429.7	192.7	237.03	1.813		
16,300.0	6,870.0	16,688.1	7,200.0	173.8	174.2	139.96	8,724.4	2,032.3	429.7	190.0	239.73	1.793		
16,400.0	6,870.0	16,788.1	7,200.0	175.7	176.1	139.96	8,824.4	2,032.1	429.7	187.3	242.44	1.773		
16,500.0	6,870.0	16,888.1	7,200.0	177.6	178.0	139.96	8,924.4	2,031.9	429.7	184.6	245.14	1.753		
16,600.0	6,870.0	16,988.1	7,200.0	179.4	179.8	139.96	9,024.4	2,031.6	429.7	181.9	247.85	1.734		
16,700.0	6,870.0	17,088.1	7,200.0	181.3	181.7	139.96	9,124.4	2,031.4	429.7	179.2	250.55	1.715		
16,800.0	6,870.0	17,188.1	7,200.0	183.2	183.6	139.96	9,224.4	2,031.2	429.8	176.5	253.26	1.697		
16,828.0	6,870.0	17,216.1	7,200.0	183.8	184.1	139.96	9,252.4	2,031.1	429.8	175.8	253.96	1.692		
16,857.4	6,870.0	17,234.4	7,200.0	184.3	184.4	139.96	9,270.7	2,031.0	429.9	175.4	254.54	1.689 SF		

Company:	Synergy Resources	Local Co-ordinate Reference:	Well SRC Evans 43-26-23-14NHZ
Project:	SEC.26-T5N-R66W	TVD Reference:	WELL @ 4769.0ft (RKB - 15')
Reference Site:	SRC Evans East Pad Sec.26-T5N-R66W	MD Reference:	WELL @ 4769.0ft (RKB - 15')
Site Error:	0.0ft	North Reference:	True
Reference Well:	SRC Evans 43-26-23-14NHZ	Survey Calculation Method:	Minimum Curvature
Well Error:	0.0ft	Output errors are at	2.00 sigma
Reference Wellbore	Wellbore #1	Database:	Landmark
Reference Design:	Plan #1 (10-27-14)	Offset TVD Reference:	Offset Datum

Offset Design													Offset Site Error:	0.0 ft
Survey Program: 0-MWD													Offset Well Error:	0.0 ft
Reference		Offset		Semi Major Axis			Distance							Warning
Measured Depth (ft)	Vertical Depth (ft)	Measured Depth (ft)	Vertical Depth (ft)	Reference (ft)	Offset (ft)	Highside Toolface (°)	Offset Wellbore Centre +N/-S (ft)	+E/-W (ft)	Between Centres (ft)	Between Ellipses (ft)	Minimum Separation (ft)	Separation Factor		
0.0	0.0	0.0	0.0	0.0	0.0	-180.00	-22.6	0.0	22.6					
100.0	100.0	100.0	100.0	0.1	0.1	-180.00	-22.6	0.0	22.6	22.4	0.22	100.474		
200.0	200.0	200.0	200.0	0.3	0.3	-180.00	-22.6	0.0	22.6	21.9	0.67	33.491		
300.0	300.0	300.0	300.0	0.6	0.6	-180.00	-22.6	0.0	22.6	21.5	1.12	20.095		
400.0	400.0	400.0	400.0	0.8	0.8	-180.00	-22.6	0.0	22.6	21.0	1.57	14.353		
500.0	500.0	500.0	500.0	1.0	1.0	69.49	-22.6	0.0	21.9	19.9	2.01	10.924		
600.0	599.8	599.8	599.8	1.2	1.2	83.22	-22.6	0.0	20.7	18.2	2.44	8.485		
632.6	632.4	632.4	632.4	1.3	1.3	89.53	-22.7	0.2	20.5	18.0	2.58	7.967	CC, ES	
700.0	699.5	699.6	699.6	1.4	1.4	102.39	-23.4	1.5	21.1	18.2	2.87	7.349		
800.0	798.7	799.6	799.4	1.7	1.6	118.86	-25.8	6.2	23.8	20.5	3.32	7.185		
900.0	897.5	899.8	899.3	2.0	1.9	130.92	-29.8	13.9	28.2	24.5	3.79	7.454		
1,000.0	995.6	1,000.3	999.0	2.4	2.1	139.24	-35.5	24.8	33.6	29.4	4.28	7.864		
1,100.0	1,093.1	1,101.1	1,098.5	2.8	2.4	144.94	-42.8	38.7	39.6	34.9	4.79	8.275		
1,200.0	1,189.6	1,202.0	1,197.6	3.3	2.8	148.91	-51.7	55.9	46.0	40.7	5.33	8.627		
1,301.4	1,286.6	1,304.7	1,297.6	3.9	3.2	151.74	-62.5	76.4	52.7	46.8	5.92	8.903		
1,400.0	1,380.4	1,404.1	1,393.6	4.5	3.6	153.16	-74.3	99.1	58.0	51.5	6.55	8.854		
1,500.0	1,475.4	1,504.0	1,490.0	5.1	4.1	154.07	-86.5	122.4	63.0	55.7	7.22	8.715		
1,600.0	1,570.5	1,603.8	1,586.3	5.7	4.6	154.85	-98.7	145.8	67.9	60.0	7.90	8.597		
1,700.0	1,665.6	1,703.7	1,682.7	6.4	5.2	155.53	-110.8	169.1	72.9	64.3	8.58	8.492		
1,800.0	1,760.7	1,803.6	1,779.0	7.0	5.7	156.12	-123.0	192.4	77.9	68.6	9.27	8.402		
1,900.0	1,855.8	1,903.4	1,875.4	7.6	6.2	156.64	-135.2	215.7	82.8	72.9	9.95	8.323		
2,000.0	1,950.9	2,003.3	1,971.7	8.3	6.8	157.09	-147.3	239.0	87.8	77.2	10.64	8.254		
2,100.0	2,046.0	2,103.2	2,068.1	9.0	7.3	157.50	-159.5	262.3	92.8	81.5	11.33	8.193		
2,200.0	2,141.1	2,203.1	2,164.4	9.6	7.9	157.87	-171.7	285.6	97.8	85.8	12.02	8.139		
2,300.0	2,236.2	2,302.9	2,260.8	10.3	8.4	158.21	-183.8	308.9	102.8	90.1	12.71	8.091		
2,400.0	2,331.3	2,402.8	2,357.1	10.9	9.0	158.51	-196.0	332.2	107.8	94.4	13.39	8.049		
2,500.0	2,426.4	2,502.7	2,453.5	11.6	9.6	158.78	-208.2	355.5	112.8	98.7	14.08	8.010		
2,600.0	2,521.4	2,602.6	2,549.8	12.2	10.1	159.03	-220.3	378.9	117.8	103.0	14.77	7.975		
2,700.0	2,616.5	2,702.4	2,646.2	12.9	10.7	159.26	-232.5	402.2	122.8	107.4	15.46	7.944		
2,800.0	2,711.6	2,802.3	2,742.5	13.6	11.2	159.48	-244.7	425.5	127.8	111.7	16.15	7.915		
2,900.0	2,806.7	2,902.2	2,838.9	14.2	11.8	159.67	-256.8	448.8	132.9	116.0	16.84	7.889		
3,000.0	2,901.8	3,002.1	2,935.2	14.9	12.4	159.86	-269.0	472.1	137.9	120.3	17.53	7.864		
3,100.0	2,996.9	3,101.9	3,031.6	15.5	12.9	160.03	-281.2	495.4	142.9	124.7	18.22	7.842		
3,200.0	3,092.0	3,201.8	3,127.9	16.2	13.5	160.18	-293.3	518.7	147.9	129.0	18.91	7.822		
3,300.0	3,187.1	3,301.7	3,224.3	16.9	14.1	160.33	-305.5	542.0	152.9	133.3	19.60	7.803		
3,400.0	3,282.2	3,401.5	3,320.6	17.5	14.6	160.47	-317.7	565.3	157.9	137.6	20.29	7.785		
3,500.0	3,377.3	3,501.4	3,417.0	18.2	15.2	160.60	-329.8	588.6	163.0	142.0	20.98	7.768		
3,600.0	3,472.3	3,601.3	3,513.3	18.8	15.8	160.72	-342.0	612.0	168.0	146.3	21.67	7.753		
3,700.0	3,567.4	3,701.2	3,609.7	19.5	16.3	160.84	-354.2	635.3	173.0	150.6	22.35	7.739		
3,800.0	3,662.5	3,801.0	3,706.0	20.2	16.9	160.95	-366.3	658.6	178.0	155.0	23.04	7.725		
3,900.0	3,757.6	3,900.9	3,802.4	20.8	17.5	161.05	-378.5	681.9	183.0	159.3	23.73	7.713		
4,000.0	3,852.7	4,000.8	3,898.7	21.5	18.0	161.15	-390.7	705.2	188.1	163.6	24.42	7.701		
4,100.0	3,947.8	4,100.7	3,995.1	22.2	18.6	161.24	-402.8	728.5	193.1	168.0	25.11	7.690		
4,200.0	4,042.9	4,200.5	4,091.4	22.8	19.2	161.33	-415.0	751.8	198.1	172.3	25.80	7.679		
4,300.0	4,138.0	4,300.4	4,187.8	23.5	19.7	161.41	-427.2	775.1	203.1	176.6	26.49	7.669		
4,400.0	4,233.1	4,400.3	4,284.1	24.2	20.3	161.49	-439.3	798.4	208.2	181.0	27.18	7.659		
4,500.0	4,328.2	4,500.2	4,380.5	24.8	20.9	161.56	-451.5	821.7	213.2	185.3	27.87	7.650		
4,600.0	4,423.3	4,600.0	4,476.8	25.5	21.4	161.63	-463.7	845.1	218.2	189.7	28.55	7.642		
4,700.0	4,518.3	4,699.9	4,573.2	26.1	22.0	161.70	-475.8	868.4	223.2	194.0	29.24	7.634		
4,800.0	4,613.4	4,799.8	4,669.5	26.8	22.6	161.77	-488.0	891.7	228.3	198.3	29.93	7.626		
4,900.0	4,708.5	4,899.6	4,765.9	27.5	23.1	161.83	-500.2	915.0	233.3	202.7	30.62	7.619		
5,000.0	4,803.6	4,999.5	4,862.2	28.1	23.7	161.89	-512.3	938.3	238.3	207.0	31.31	7.612		

CC - Min centre to center distance or convergent point, SF - min separation factor, ES - min ellipse separation

Company:	Synergy Resources	Local Co-ordinate Reference:	Well SRC Evans 43-26-23-14NHZ
Project:	SEC.26-T5N-R66W	TVD Reference:	WELL @ 4769.0ft (RKB - 15')
Reference Site:	SRC Evans East Pad Sec.26-T5N-R66W	MD Reference:	WELL @ 4769.0ft (RKB - 15')
Site Error:	0.0ft	North Reference:	True
Reference Well:	SRC Evans 43-26-23-14NHZ	Survey Calculation Method:	Minimum Curvature
Well Error:	0.0ft	Output errors are at	2.00 sigma
Reference Wellbore	Wellbore #1	Database:	Landmark
Reference Design:	Plan #1 (10-27-14)	Offset TVD Reference:	Offset Datum

Offset Design												Offset Site Error:	0.0 ft
Survey Program: 0-MWD												Offset Well Error:	0.0 ft
Reference		Offset		Semi Major Axis			Distance						Warning
Measured Depth (ft)	Vertical Depth (ft)	Measured Depth (ft)	Vertical Depth (ft)	Reference (ft)	Offset (ft)	Highside Toolface (°)	Offset Wellbore Centre +N/-S (ft)	+E/-W (ft)	Between Centres (ft)	Between Ellipses (ft)	Minimum Separation (ft)	Separation Factor	
5,100.0	4,898.7	5,099.4	4,958.6	28.8	24.3	161.95	-524.5	961.6	243.3	211.3	32.00	7.605	
5,200.0	4,993.8	5,199.3	5,054.9	29.5	24.8	162.00	-536.7	984.9	248.4	215.7	32.69	7.599	
5,300.0	5,088.9	5,299.1	5,151.3	30.1	25.4	162.06	-548.8	1,008.2	253.4	220.0	33.37	7.593	
5,400.0	5,184.0	5,399.0	5,247.6	30.8	26.0	162.11	-561.0	1,031.5	258.4	224.4	34.06	7.587	
5,500.0	5,279.1	5,498.9	5,344.0	31.5	26.5	162.16	-573.2	1,054.8	263.4	228.7	34.75	7.581	
5,600.0	5,374.2	5,598.8	5,440.3	32.1	27.1	162.21	-585.3	1,078.2	268.5	233.0	35.44	7.576	
5,700.0	5,469.2	5,698.6	5,536.7	32.8	27.7	162.25	-597.5	1,101.5	273.5	237.4	36.13	7.570	
5,800.0	5,564.3	5,798.5	5,633.0	33.5	28.2	162.29	-609.7	1,124.8	278.5	241.7	36.82	7.565	
5,900.0	5,659.4	5,898.4	5,729.4	34.1	28.8	162.34	-621.8	1,148.1	283.6	246.1	37.50	7.561	
6,000.0	5,754.5	5,998.3	5,825.7	34.8	29.4	162.38	-634.0	1,171.4	288.6	250.4	38.19	7.556	
6,100.0	5,849.6	6,098.1	5,922.1	35.5	30.0	162.42	-646.2	1,194.7	293.6	254.7	38.88	7.552	
6,200.0	5,944.7	6,198.0	6,018.4	36.1	30.5	162.46	-658.3	1,218.0	298.6	259.1	39.57	7.547	
6,300.0	6,039.8	6,297.9	6,114.8	36.8	31.1	162.49	-670.5	1,241.3	303.7	263.4	40.26	7.543	
6,357.0	6,094.0	6,354.8	6,169.7	37.2	31.4	162.51	-677.4	1,254.6	306.5	265.9	40.65	7.541	
6,400.0	6,135.0	6,397.7	6,211.1	37.4	31.7	172.83	-682.7	1,264.6	308.6	267.6	40.98	7.530	
6,450.0	6,182.9	6,447.5	6,259.1	37.7	31.9	-174.57	-688.7	1,276.2	310.6	269.0	41.62	7.463	
6,500.0	6,230.8	6,496.8	6,306.7	37.9	32.2	-162.59	-694.7	1,287.8	312.4	269.9	42.55	7.344	
6,550.0	6,278.5	6,545.4	6,353.6	38.1	32.5	-152.51	-700.6	1,299.1	314.3	270.6	43.74	7.186	
6,600.0	6,325.7	6,593.2	6,399.7	38.2	32.8	-144.95	-706.5	1,310.2	316.6	271.5	45.17	7.011	
6,650.0	6,372.3	6,640.6	6,445.5	38.4	33.0	-139.78	-711.7	1,321.3	319.8	273.1	46.70	6.848	
6,700.0	6,417.9	6,689.3	6,492.7	38.5	33.2	-136.34	-714.1	1,332.8	323.8	275.7	48.08	6.734	
6,750.0	6,462.3	6,739.3	6,541.3	38.6	33.4	-134.18	-713.1	1,344.5	328.7	279.5	49.25	6.674	
6,800.0	6,505.4	6,790.7	6,591.1	38.7	33.6	-132.97	-708.5	1,356.5	334.4	284.3	50.15	6.669	
6,850.0	6,546.9	6,843.6	6,641.8	38.8	33.7	-132.44	-699.9	1,368.7	340.9	290.2	50.74	6.719	
6,900.0	6,586.7	6,891.1	6,693.3	38.8	33.8	-132.40	-687.1	1,381.1	348.0	297.0	51.00	6.824	
6,950.0	6,624.5	6,954.3	6,745.2	38.8	33.9	-132.70	-669.6	1,393.7	355.6	304.7	50.92	6.983	
7,000.0	6,660.1	7,012.4	6,797.3	38.8	34.0	-133.24	-647.3	1,406.2	363.6	313.1	50.52	7.197	
7,050.0	6,693.4	7,072.4	6,849.2	38.8	34.0	-133.92	-619.7	1,418.6	371.8	321.9	49.81	7.464	
7,100.0	6,724.3	7,134.5	6,900.2	38.8	34.0	-134.70	-586.6	1,430.9	380.0	331.2	48.83	7.782	
7,150.0	6,752.4	7,198.6	6,949.8	38.7	34.0	-135.53	-547.7	1,442.8	388.1	340.5	47.63	8.148	
7,200.0	6,777.9	7,264.9	6,997.3	38.7	34.0	-136.35	-502.9	1,454.2	396.0	349.7	46.27	8.557	
7,250.0	6,800.4	7,333.3	7,041.9	38.6	33.9	-137.15	-452.2	1,464.8	403.3	358.5	44.83	8.996	
7,300.0	6,819.9	7,403.8	7,082.6	38.6	33.8	-137.90	-395.6	1,474.5	410.1	366.7	43.40	9.449	
7,350.0	6,836.3	7,476.2	7,118.7	38.5	33.7	-138.56	-333.5	1,483.1	416.1	374.0	42.08	9.888	
7,400.0	6,849.5	7,550.3	7,149.2	38.4	33.6	-139.13	-266.3	1,490.3	421.1	380.1	40.96	10.281	
7,450.0	6,859.5	7,625.9	7,173.1	38.4	33.5	-139.59	-194.9	1,495.9	425.1	384.9	40.15	10.587	
7,500.0	6,866.2	7,702.6	7,189.7	38.3	33.3	-139.92	-120.1	1,499.7	427.9	388.2	39.73	10.771	
7,550.0	6,869.6	7,780.1	7,198.6	38.2	33.2	-140.12	-43.2	1,501.7	429.4	389.7	39.75	10.804	
7,575.2	6,870.0	7,819.3	7,200.0	38.2	33.1	-140.16	-3.9	1,501.9	429.7	389.8	39.93	10.762	
7,600.0	6,870.0	7,846.4	7,200.0	38.1	33.1	-140.16	23.1	1,501.8	429.7	389.5	40.21	10.688	
7,700.0	6,870.0	7,946.4	7,200.0	38.0	33.0	-140.16	123.1	1,501.6	429.7	388.4	41.33	10.398	
7,800.0	6,870.0	8,046.4	7,200.0	38.0	33.0	-140.16	223.1	1,501.4	429.7	387.2	42.58	10.093	
7,900.0	6,870.0	8,146.4	7,200.0	38.0	33.0	-140.16	323.1	1,501.1	429.7	385.8	43.96	9.776	
8,000.0	6,870.0	8,246.4	7,200.0	38.1	33.2	-140.16	423.1	1,500.9	429.7	384.3	45.46	9.453	
8,100.0	6,870.0	8,346.4	7,200.0	38.2	33.5	-140.16	523.1	1,500.6	429.7	382.7	47.07	9.130	
8,200.0	6,870.0	8,446.4	7,200.0	38.5	33.9	-140.16	623.1	1,500.4	429.7	381.0	48.77	8.811	
8,300.0	6,870.0	8,546.4	7,200.0	38.9	34.5	-140.16	723.1	1,500.1	429.7	379.2	50.57	8.498	
8,400.0	6,870.0	8,646.4	7,200.0	39.4	35.3	-140.16	823.1	1,499.9	429.7	377.3	52.44	8.195	
8,500.0	6,870.0	8,746.4	7,200.0	40.0	36.1	-140.16	923.1	1,499.7	429.7	375.4	54.38	7.902	
8,600.0	6,870.0	8,846.4	7,200.0	40.7	37.1	-140.16	1,023.1	1,499.4	429.7	373.4	56.39	7.621	
8,700.0	6,870.0	8,946.4	7,200.0	41.5	38.3	-140.16	1,123.1	1,499.2	429.7	371.3	58.45	7.352	
8,800.0	6,870.0	9,046.4	7,200.0	42.5	39.5	-140.16	1,223.1	1,498.9	429.7	369.2	60.57	7.096	

CC - Min centre to center distance or convergent point, SF - min separation factor, ES - min ellipse separation

Company:	Synergy Resources	Local Co-ordinate Reference:	Well SRC Evans 43-26-23-14NHZ
Project:	SEC.26-T5N-R66W	TVD Reference:	WELL @ 4769.0ft (RKB - 15')
Reference Site:	SRC Evans East Pad Sec.26-T5N-R66W	MD Reference:	WELL @ 4769.0ft (RKB - 15')
Site Error:	0.0ft	North Reference:	True
Reference Well:	SRC Evans 43-26-23-14NHZ	Survey Calculation Method:	Minimum Curvature
Well Error:	0.0ft	Output errors are at	2.00 sigma
Reference Wellbore	Wellbore #1	Database:	Landmark
Reference Design:	Plan #1 (10-27-14)	Offset TVD Reference:	Offset Datum

Offset Design												Offset Site Error:	0.0ft
Survey Program: 0-MWD												Offset Well Error:	0.0ft
Reference		Offset		Semi Major Axis			Distance						Warning
Measured Depth (ft)	Vertical Depth (ft)	Measured Depth (ft)	Vertical Depth (ft)	Reference (ft)	Offset (ft)	Highside Toolface (°)	Offset Wellbore Centre +N/-S (ft)	+E/-W (ft)	Between Centres (ft)	Between Ellipses (ft)	Minimum Separation (ft)	Separation Factor	
8,900.0	6,870.0	9,146.4	7,200.0	43.6	40.8	-140.16	1,323.1	1,498.7	429.7	367.0	62.72	6.851	
9,000.0	6,870.0	9,246.4	7,200.0	44.7	42.1	-140.16	1,423.1	1,498.4	429.7	364.8	64.93	6.619	
9,100.0	6,870.0	9,346.4	7,200.0	45.9	43.5	-140.16	1,523.1	1,498.2	429.7	362.6	67.16	6.399	
9,200.0	6,870.0	9,446.4	7,200.0	47.2	45.0	-140.16	1,623.1	1,497.9	429.7	360.3	69.43	6.189	
9,300.0	6,870.0	9,546.4	7,200.0	48.6	46.5	-140.16	1,723.1	1,497.7	429.7	358.0	71.74	5.991	
9,400.0	6,870.0	9,646.4	7,200.0	49.9	48.0	-140.16	1,823.1	1,497.5	429.7	355.7	74.07	5.802	
9,500.0	6,870.0	9,746.4	7,200.0	51.4	49.5	-140.16	1,923.1	1,497.2	429.7	353.3	76.42	5.623	
9,600.0	6,870.0	9,846.4	7,200.0	52.9	51.1	-140.16	2,023.1	1,497.0	429.7	351.0	78.80	5.454	
9,700.0	6,870.0	9,946.4	7,200.0	54.4	52.7	-140.16	2,123.1	1,496.7	429.7	348.6	81.20	5.293	
9,800.0	6,870.0	10,046.4	7,200.0	55.9	54.4	-140.16	2,223.1	1,496.5	429.7	346.1	83.61	5.140	
9,823.1	6,870.0	10,069.5	7,200.0	56.3	54.8	-140.16	2,246.2	1,496.4	429.7	345.6	84.17	5.106	
9,900.0	6,870.0	10,146.4	7,200.0	57.5	56.0	-140.16	2,323.1	1,496.2	429.7	343.7	86.05	4.994	
10,000.0	6,870.0	10,246.4	7,200.0	59.1	57.7	-140.16	2,423.1	1,496.0	429.7	341.3	88.50	4.856	
10,100.0	6,870.0	10,346.4	7,200.0	60.7	59.4	-140.16	2,523.1	1,495.7	429.7	338.8	90.96	4.724	
10,200.0	6,870.0	10,446.4	7,200.0	62.4	61.1	-140.16	2,623.1	1,495.5	429.7	336.3	93.44	4.599	
10,300.0	6,870.0	10,546.4	7,200.0	64.0	62.8	-140.16	2,723.1	1,495.3	429.7	333.8	95.93	4.480	
10,400.0	6,870.0	10,646.4	7,200.0	65.7	64.5	-140.16	2,823.1	1,495.0	429.7	331.3	98.43	4.366	
10,500.0	6,870.0	10,746.4	7,200.0	67.4	66.2	-140.16	2,923.1	1,494.8	429.7	328.8	100.95	4.257	
10,600.0	6,870.0	10,846.4	7,200.0	69.1	68.0	-140.16	3,023.1	1,494.5	429.7	326.3	103.47	4.153	
10,700.0	6,870.0	10,946.4	7,200.0	70.8	69.7	-140.16	3,123.1	1,494.3	429.7	323.7	106.00	4.054	
10,800.0	6,870.0	11,046.4	7,200.0	72.5	71.5	-140.16	3,223.1	1,494.0	429.7	321.2	108.54	3.959	
10,900.0	6,870.0	11,146.4	7,200.0	74.3	73.3	-140.16	3,323.1	1,493.8	429.7	318.7	111.09	3.868	
11,000.0	6,870.0	11,246.4	7,200.0	76.0	75.0	-140.16	3,423.1	1,493.5	429.7	316.1	113.65	3.781	
11,100.0	6,870.0	11,346.4	7,200.0	77.7	76.8	-140.16	3,523.1	1,493.3	429.7	313.5	116.21	3.698	
11,200.0	6,870.0	11,446.4	7,200.0	79.5	78.6	-140.16	3,623.1	1,493.1	429.7	311.0	118.78	3.618	
11,300.0	6,870.0	11,546.4	7,200.0	81.3	80.4	-140.16	3,723.1	1,492.8	429.7	308.4	121.36	3.541	
11,336.2	6,870.0	11,582.6	7,200.0	81.9	81.1	-140.16	3,759.3	1,492.7	429.7	307.5	122.29	3.514	
11,400.0	6,870.0	11,646.4	7,200.0	83.0	82.2	-140.16	3,823.1	1,492.6	429.7	305.8	123.94	3.468	
11,500.0	6,870.0	11,746.4	7,200.0	84.8	84.0	-140.16	3,923.1	1,492.3	429.7	303.2	126.52	3.397	
11,600.0	6,870.0	11,846.4	7,200.0	86.6	85.8	-140.16	4,023.1	1,492.1	429.7	300.6	129.11	3.328	
11,700.0	6,870.0	11,946.4	7,200.0	88.4	87.6	-140.16	4,123.1	1,491.8	429.7	298.0	131.71	3.263	
11,800.0	6,870.0	12,046.4	7,200.0	90.2	89.5	-140.16	4,223.1	1,491.6	429.7	295.4	134.31	3.200	
11,900.0	6,870.0	12,146.4	7,200.0	92.0	91.3	-140.16	4,323.1	1,491.3	429.7	292.8	136.92	3.139	
12,000.0	6,870.0	12,246.4	7,200.0	93.8	93.1	-140.16	4,423.1	1,491.1	429.7	290.2	139.52	3.080	
12,100.0	6,870.0	12,346.4	7,200.0	95.6	94.9	-140.16	4,523.1	1,490.9	429.7	287.6	142.14	3.023	
12,200.0	6,870.0	12,446.4	7,200.0	97.4	96.8	-140.16	4,623.1	1,490.6	429.7	285.0	144.75	2.969	
12,300.0	6,870.0	12,546.4	7,200.0	99.2	98.6	-140.16	4,723.1	1,490.4	429.7	282.4	147.37	2.916	
12,400.0	6,870.0	12,646.4	7,200.0	101.1	100.4	-140.16	4,823.1	1,490.1	429.7	279.8	150.00	2.865	
12,500.0	6,870.0	12,746.4	7,200.0	102.9	102.3	-140.16	4,923.1	1,489.9	429.7	277.1	152.62	2.816	
12,600.0	6,870.0	12,846.4	7,200.0	104.7	104.1	-140.16	5,023.1	1,489.6	429.7	274.5	155.25	2.768	
12,700.0	6,870.0	12,946.4	7,200.0	106.6	106.0	-140.16	5,123.1	1,489.4	429.7	271.9	157.88	2.722	
12,800.0	6,870.0	13,046.4	7,200.0	108.4	107.8	-140.16	5,223.1	1,489.1	429.7	269.2	160.51	2.677	
12,833.3	6,870.0	13,079.7	7,200.0	109.0	108.5	-140.16	5,256.4	1,489.1	429.7	268.4	161.39	2.663	
12,900.0	6,870.0	13,146.4	7,200.0	110.2	109.7	-140.16	5,323.1	1,488.9	429.7	266.6	163.15	2.634	
13,000.0	6,870.0	13,246.4	7,200.0	112.1	111.5	-140.16	5,423.1	1,488.7	429.7	264.0	165.79	2.592	
13,100.0	6,870.0	13,346.4	7,200.0	113.9	113.4	-140.16	5,523.1	1,488.4	429.7	261.3	168.43	2.552	
13,200.0	6,870.0	13,446.4	7,200.0	115.8	115.3	-140.16	5,623.1	1,488.2	429.7	258.7	171.07	2.512	
13,300.0	6,870.0	13,546.4	7,200.0	117.6	117.1	-140.16	5,723.1	1,487.9	429.7	256.0	173.72	2.474	
13,400.0	6,870.0	13,646.4	7,200.0	119.5	119.0	-140.16	5,823.1	1,487.7	429.7	253.4	176.36	2.437	
13,500.0	6,870.0	13,746.4	7,200.0	121.3	120.9	-140.16	5,923.1	1,487.4	429.7	250.7	179.01	2.401	
13,600.0	6,870.0	13,846.4	7,200.0	123.2	122.7	-140.16	6,023.1	1,487.2	429.7	248.1	181.66	2.366	
13,700.0	6,870.0	13,946.4	7,200.0	125.0	124.6	-140.16	6,123.1	1,486.9	429.7	245.4	184.32	2.332	

CC - Min centre to center distance or convergent point, SF - min separation factor, ES - min ellipse separation

Company:	Synergy Resources	Local Co-ordinate Reference:	Well SRC Evans 43-26-23-14NHZ
Project:	SEC.26-T5N-R66W	TVD Reference:	WELL @ 4769.0ft (RKB - 15')
Reference Site:	SRC Evans East Pad Sec.26-T5N-R66W	MD Reference:	WELL @ 4769.0ft (RKB - 15')
Site Error:	0.0ft	North Reference:	True
Reference Well:	SRC Evans 43-26-23-14NHZ	Survey Calculation Method:	Minimum Curvature
Well Error:	0.0ft	Output errors are at	2.00 sigma
Reference Wellbore	Wellbore #1	Database:	Landmark
Reference Design:	Plan #1 (10-27-14)	Offset TVD Reference:	Offset Datum

Offset Design												Offset Site Error:	0.0 ft
Survey Program: 0-MWD												Offset Well Error:	0.0 ft
Reference		Offset		Semi Major Axis			Distance						Warning
Measured Depth (ft)	Vertical Depth (ft)	Measured Depth (ft)	Vertical Depth (ft)	Reference (ft)	Offset (ft)	Highside Toolface (°)	Offset Wellbore Centre +N/-S (ft)	+E/-W (ft)	Between Centres (ft)	Between Ellipses (ft)	Minimum Separation (ft)	Separation Factor	
13,800.0	6,870.0	14,046.4	7,200.0	126.9	126.5	-140.16	6,223.1	1,486.7	429.7	242.8	186.97	2.298	
13,900.0	6,870.0	14,146.4	7,200.0	128.7	128.3	-140.16	6,323.1	1,486.5	429.7	240.1	189.63	2.266	
14,000.0	6,870.0	14,246.4	7,200.0	130.6	130.2	-140.16	6,423.1	1,486.2	429.7	237.5	192.28	2.235	
14,100.0	6,870.0	14,346.4	7,200.0	132.5	132.1	-140.16	6,523.1	1,486.0	429.7	234.8	194.94	2.205	
14,200.0	6,870.0	14,446.4	7,200.0	134.3	133.9	-140.16	6,623.1	1,485.7	429.7	232.1	197.60	2.175	
14,300.0	6,870.0	14,546.4	7,200.0	136.2	135.8	-140.16	6,723.1	1,485.5	429.7	229.5	200.26	2.146	
14,400.0	6,870.0	14,646.4	7,200.0	138.1	137.7	-140.16	6,823.1	1,485.2	429.7	226.8	202.92	2.118	
14,500.0	6,870.0	14,746.4	7,200.0	139.9	139.6	-140.16	6,923.1	1,485.0	429.7	224.2	205.59	2.090	
14,600.0	6,870.0	14,846.4	7,200.0	141.8	141.5	-140.16	7,023.1	1,484.7	429.7	221.5	208.25	2.064	
14,700.0	6,870.0	14,946.4	7,200.0	143.7	143.3	-140.16	7,123.1	1,484.5	429.7	218.8	210.92	2.038	
14,800.0	6,870.0	15,046.4	7,200.0	145.6	145.2	-140.16	7,223.1	1,484.3	429.7	216.2	213.58	2.012	
14,900.0	6,870.0	15,146.4	7,200.0	147.4	147.1	-140.16	7,323.1	1,484.0	429.7	213.5	216.25	1.987	
15,000.0	6,870.0	15,246.4	7,200.0	149.3	149.0	-140.16	7,423.1	1,483.8	429.7	210.8	218.92	1.963	
15,100.0	6,870.0	15,346.4	7,200.0	151.2	150.9	-140.16	7,523.1	1,483.5	429.7	208.2	221.59	1.939	
15,200.0	6,870.0	15,446.4	7,200.0	153.1	152.8	-140.16	7,623.1	1,483.3	429.7	205.5	224.26	1.916	
15,300.0	6,870.0	15,546.4	7,200.0	154.9	154.6	-140.16	7,723.1	1,483.0	429.7	202.8	226.93	1.894	
15,400.0	6,870.0	15,646.4	7,200.0	156.8	156.5	-140.16	7,823.1	1,482.8	429.7	200.1	229.61	1.872	
15,500.0	6,870.0	15,746.4	7,200.0	158.7	158.4	-140.16	7,923.1	1,482.5	429.7	197.5	232.28	1.850	
15,600.0	6,870.0	15,846.4	7,200.0	160.6	160.3	-140.16	8,023.1	1,482.3	429.7	194.8	234.95	1.829	
15,700.0	6,870.0	15,946.4	7,200.0	162.5	162.2	-140.16	8,123.1	1,482.1	429.7	192.1	237.63	1.808	
15,800.0	6,870.0	16,046.4	7,200.0	164.3	164.1	-140.16	8,223.1	1,481.8	429.7	189.4	240.30	1.788	
15,839.2	6,870.0	16,085.6	7,200.0	165.1	164.8	-140.16	8,262.3	1,481.7	429.7	188.4	241.35	1.781	
15,900.0	6,870.0	16,146.4	7,200.0	166.2	166.0	-140.16	8,323.1	1,481.6	429.7	186.8	242.98	1.769	
16,000.0	6,870.0	16,246.4	7,200.0	168.1	167.9	-140.16	8,423.1	1,481.3	429.7	184.1	245.66	1.749	
16,100.0	6,870.0	16,346.4	7,200.0	170.0	169.8	-140.16	8,523.1	1,481.1	429.7	181.4	248.34	1.731	
16,200.0	6,870.0	16,446.4	7,200.0	171.9	171.7	-140.16	8,623.1	1,480.8	429.7	178.7	251.01	1.712	
16,300.0	6,870.0	16,546.4	7,200.0	173.8	173.6	-140.16	8,723.1	1,480.6	429.7	176.1	253.69	1.694	
16,400.0	6,870.0	16,646.4	7,200.0	175.7	175.4	-140.16	8,823.1	1,480.3	429.7	173.4	256.37	1.676	
16,500.0	6,870.0	16,746.4	7,200.0	177.6	177.3	-140.16	8,923.1	1,480.1	429.7	170.7	259.05	1.659	
16,600.0	6,870.0	16,846.4	7,200.0	179.4	179.2	-140.16	9,023.1	1,479.9	429.7	168.0	261.74	1.642	
16,700.0	6,870.0	16,946.4	7,200.0	181.3	181.1	-140.16	9,123.1	1,479.6	429.7	165.3	264.42	1.625	
16,800.0	6,870.0	17,046.4	7,200.0	183.2	183.0	-140.16	9,223.1	1,479.4	429.7	162.7	267.10	1.609	
16,841.1	6,870.0	17,087.5	7,200.0	184.0	183.8	-140.16	9,264.2	1,479.3	429.7	161.5	268.20	1.602	
16,857.4	6,870.0	17,103.8	7,200.0	184.3	184.1	-140.16	9,280.4	1,479.2	429.7	161.1	268.64	1.600 SF	

Company:	Synergy Resources	Local Co-ordinate Reference:	Well SRC Evans 43-26-23-14NHZ
Project:	SEC.26-T5N-R66W	TVD Reference:	WELL @ 4769.0ft (RKB - 15')
Reference Site:	SRC Evans East Pad Sec.26-T5N-R66W	MD Reference:	WELL @ 4769.0ft (RKB - 15')
Site Error:	0.0ft	North Reference:	True
Reference Well:	SRC Evans 43-26-23-14NHZ	Survey Calculation Method:	Minimum Curvature
Well Error:	0.0ft	Output errors are at	2.00 sigma
Reference Wellbore	Wellbore #1	Database:	Landmark
Reference Design:	Plan #1 (10-27-14)	Offset TVD Reference:	Offset Datum

Offset Design													Offset Site Error:	0.0 ft
Survey Program: 0-MWD													Offset Well Error:	0.0 ft
Reference		Offset		Semi Major Axis			Distance							Warning
Measured Depth (ft)	Vertical Depth (ft)	Measured Depth (ft)	Vertical Depth (ft)	Reference (ft)	Offset (ft)	Highside Toolface (°)	Offset Wellbore Centre +N/-S (ft)	+E/-W (ft)	Between Centres (ft)	Between Ellipses (ft)	Minimum Separation (ft)	Separation Factor		
0.0	0.0	0.0	0.0	0.0	0.0	180.00	-45.2	0.0	45.2					
100.0	100.0	99.0	99.0	0.1	0.1	180.00	-45.2	0.0	45.2	45.0	0.22	201.993		
200.0	200.0	199.0	199.0	0.3	0.3	180.00	-45.2	0.0	45.2	44.5	0.67	67.219		
300.0	300.0	299.0	299.0	0.6	0.6	180.00	-45.2	0.0	45.2	44.1	1.12	40.277		
400.0	400.0	399.0	399.0	0.8	0.8	180.00	-45.2	0.0	45.2	43.6	1.57	28.753		
500.0	500.0	499.0	499.0	1.0	1.0	67.39	-45.2	0.0	44.5	42.5	2.00	22.196		
600.0	599.8	598.8	598.8	1.2	1.2	73.90	-45.2	0.0	42.7	40.3	2.43	17.561		
700.0	699.5	698.5	698.5	1.4	1.5	85.62	-45.2	0.0	41.2	38.3	2.89	14.250		
728.8	728.1	727.1	727.1	1.5	1.5	90.00	-45.2	0.0	41.1	38.0	3.03	13.547 CC, ES		
800.0	798.7	797.7	797.7	1.7	1.7	102.28	-45.2	0.0	42.0	38.7	3.38	12.445		
900.0	897.5	897.1	897.1	2.0	1.9	118.91	-46.0	1.4	47.3	43.4	3.86	12.241		
1,000.0	995.6	996.9	996.8	2.4	2.1	131.19	-48.8	5.7	56.0	51.6	4.33	12.937		
1,100.0	1,093.1	1,097.3	1,096.7	2.8	2.3	139.62	-53.3	13.1	66.8	62.0	4.80	13.923		
1,200.0	1,189.6	1,198.1	1,196.8	3.3	2.5	145.35	-59.8	23.4	79.0	73.7	5.30	14.921		
1,301.4	1,286.6	1,300.9	1,298.3	3.9	2.8	149.32	-68.3	37.0	92.2	86.3	5.83	15.818		
1,400.0	1,380.4	1,401.4	1,397.0	4.5	3.1	151.67	-78.5	53.4	103.9	97.5	6.40	16.236		
1,500.0	1,475.4	1,504.2	1,497.1	5.1	3.5	152.54	-90.8	73.1	113.1	106.1	7.05	16.049		
1,600.0	1,570.5	1,604.2	1,594.0	5.7	4.0	152.72	-103.8	93.9	120.6	112.9	7.74	15.586		
1,700.0	1,665.6	1,703.9	1,690.7	6.4	4.4	152.88	-116.7	114.7	128.1	119.7	8.45	15.167		
1,800.0	1,760.7	1,803.6	1,787.3	7.0	4.9	153.02	-129.7	135.4	135.6	126.4	9.17	14.793		
1,900.0	1,855.8	1,903.3	1,884.0	7.6	5.4	153.14	-142.7	156.2	143.1	133.2	9.90	14.458		
2,000.0	1,950.9	2,003.0	1,980.7	8.3	5.9	153.25	-155.7	177.0	150.6	140.0	10.64	14.159		
2,100.0	2,046.0	2,102.7	2,077.3	9.0	6.4	153.36	-168.6	197.8	158.1	146.7	11.38	13.891		
2,200.0	2,141.1	2,202.5	2,174.0	9.6	6.9	153.45	-181.6	218.6	165.6	153.5	12.13	13.651		
2,300.0	2,236.2	2,302.2	2,270.6	10.3	7.4	153.53	-194.6	239.4	173.1	160.2	12.89	13.435		
2,400.0	2,331.3	2,401.9	2,367.3	10.9	7.9	153.61	-207.6	260.1	180.6	167.0	13.64	13.240		
2,500.0	2,426.4	2,501.6	2,464.0	11.6	8.4	153.68	-220.5	280.9	188.1	173.7	14.40	13.062		
2,600.0	2,521.4	2,601.3	2,560.6	12.2	8.9	153.75	-233.5	301.7	195.6	180.5	15.16	12.901		
2,700.0	2,616.5	2,701.0	2,657.3	12.9	9.4	153.81	-246.5	322.5	203.1	187.2	15.93	12.754		
2,800.0	2,711.6	2,800.8	2,754.0	13.6	10.0	153.87	-259.5	343.3	210.6	193.9	16.69	12.619		
2,900.0	2,806.7	2,900.5	2,850.6	14.2	10.5	153.92	-272.4	364.1	218.1	200.7	17.46	12.495		
3,000.0	2,901.8	3,000.2	2,947.3	14.9	11.0	153.97	-285.4	384.8	225.6	207.4	18.23	12.380		
3,100.0	2,996.9	3,099.9	3,043.9	15.5	11.5	154.01	-298.4	405.6	233.2	214.2	18.99	12.275		
3,200.0	3,092.0	3,199.6	3,140.6	16.2	12.0	154.06	-311.4	426.4	240.7	220.9	19.76	12.177		
3,300.0	3,187.1	3,299.4	3,237.3	16.9	12.6	154.10	-324.3	447.2	248.2	227.6	20.53	12.085		
3,400.0	3,282.2	3,399.1	3,333.9	17.5	13.1	154.14	-337.3	468.0	255.7	234.4	21.30	12.000		
3,500.0	3,377.3	3,498.8	3,430.6	18.2	13.6	154.17	-350.3	488.8	263.2	241.1	22.08	11.921		
3,600.0	3,472.3	3,598.5	3,527.2	18.8	14.2	154.21	-363.3	509.5	270.7	247.8	22.85	11.847		
3,700.0	3,567.4	3,698.2	3,623.9	19.5	14.7	154.24	-376.2	530.3	278.2	254.6	23.62	11.777		
3,800.0	3,662.5	3,797.9	3,720.6	20.2	15.2	154.27	-389.2	551.1	285.7	261.3	24.39	11.712		
3,900.0	3,757.6	3,897.7	3,817.2	20.8	15.7	154.30	-402.2	571.9	293.2	268.0	25.17	11.650		
4,000.0	3,852.7	3,997.4	3,913.9	21.5	16.3	154.33	-415.1	592.7	300.7	274.8	25.94	11.592		
4,100.0	3,947.8	4,097.1	4,010.5	22.2	16.8	154.35	-428.1	613.5	308.2	281.5	26.71	11.537		
4,200.0	4,042.9	4,196.8	4,107.2	22.8	17.3	154.38	-441.1	634.3	315.7	288.2	27.49	11.486		
4,300.0	4,138.0	4,296.5	4,203.9	23.5	17.9	154.40	-454.1	655.0	323.2	295.0	28.26	11.437		
4,400.0	4,233.1	4,396.3	4,300.5	24.2	18.4	154.42	-467.0	675.8	330.7	301.7	29.04	11.390		
4,500.0	4,328.2	4,496.0	4,397.2	24.8	18.9	154.45	-480.0	696.6	338.2	308.4	29.81	11.346		
4,600.0	4,423.3	4,595.7	4,493.9	25.5	19.5	154.47	-493.0	717.4	345.7	315.2	30.59	11.304		
4,700.0	4,518.3	4,695.4	4,590.5	26.1	20.0	154.49	-506.0	738.2	353.2	321.9	31.36	11.264		
4,800.0	4,613.4	4,795.1	4,687.2	26.8	20.5	154.51	-518.9	759.0	360.7	328.6	32.14	11.226		
4,900.0	4,708.5	4,894.8	4,783.8	27.5	21.1	154.52	-531.9	779.7	368.3	335.3	32.91	11.189		
5,000.0	4,803.6	4,994.6	4,880.5	28.1	21.6	154.54	-544.9	800.5	375.8	342.1	33.69	11.154		

CC - Min centre to center distance or convergent point, SF - min separation factor, ES - min ellipse separation

Company:	Synergy Resources	Local Co-ordinate Reference:	Well SRC Evans 43-26-23-14NHZ
Project:	SEC.26-T5N-R66W	TVD Reference:	WELL @ 4769.0ft (RKB - 15')
Reference Site:	SRC Evans East Pad Sec.26-T5N-R66W	MD Reference:	WELL @ 4769.0ft (RKB - 15')
Site Error:	0.0ft	North Reference:	True
Reference Well:	SRC Evans 43-26-23-14NHZ	Survey Calculation Method:	Minimum Curvature
Well Error:	0.0ft	Output errors are at	2.00 sigma
Reference Wellbore	Wellbore #1	Database:	Landmark
Reference Design:	Plan #1 (10-27-14)	Offset TVD Reference:	Offset Datum

Offset Design												Offset Site Error:	0.0 ft
Survey Program: 0-MWD												Offset Well Error:	0.0 ft
Reference		Offset		Semi Major Axis			Distance						
Measured Depth (ft)	Vertical Depth (ft)	Measured Depth (ft)	Vertical Depth (ft)	Reference (ft)	Offset (ft)	Highside Toolface (°)	Offset Wellbore Centre +N/-S (ft)	+E/-W (ft)	Between Centres (ft)	Between Ellipses (ft)	Minimum Separation (ft)	Separation Factor	Warning
5,100.0	4,898.7	5,094.3	4,977.2	28.8	22.1	154.56	-557.9	821.3	383.3	348.8	34.46	11.121	
5,200.0	4,993.8	5,194.0	5,073.8	29.5	22.7	154.57	-570.8	842.1	390.8	355.5	35.24	11.089	
5,300.0	5,088.9	5,293.7	5,170.5	30.1	23.2	154.59	-583.8	862.9	398.3	362.3	36.01	11.059	
5,400.0	5,184.0	5,393.4	5,267.1	30.8	23.7	154.61	-596.8	883.7	405.8	369.0	36.79	11.030	
5,500.0	5,279.1	5,493.1	5,363.8	31.5	24.2	154.62	-609.8	904.4	413.3	375.7	37.57	11.002	
5,600.0	5,374.2	5,592.9	5,460.5	32.1	24.8	154.63	-622.7	925.2	420.8	382.5	38.34	10.975	
5,700.0	5,469.2	5,692.6	5,557.1	32.8	25.3	154.65	-635.7	946.0	428.3	389.2	39.12	10.949	
5,800.0	5,564.3	5,792.3	5,653.8	33.5	25.8	154.66	-648.7	966.8	435.8	395.9	39.90	10.924	
5,900.0	5,659.4	5,892.0	5,750.4	34.1	26.4	154.67	-661.6	987.6	443.3	402.6	40.67	10.900	
6,000.0	5,754.5	5,991.7	5,847.1	34.8	26.9	154.69	-674.6	1,008.4	450.8	409.4	41.45	10.877	
6,100.0	5,849.6	6,091.5	5,943.8	35.5	27.4	154.70	-687.6	1,029.1	458.3	416.1	42.23	10.854	
6,200.0	5,944.7	6,191.2	6,040.4	36.1	28.0	154.71	-700.6	1,049.9	465.8	422.8	43.00	10.833	
6,300.0	6,039.8	6,291.4	6,137.9	36.8	28.4	155.04	-711.0	1,070.9	473.3	429.8	43.55	10.867	
6,357.0	6,094.0	6,348.0	6,193.2	37.2	28.6	155.89	-711.3	1,082.7	477.6	434.1	43.45	10.990	
6,400.0	6,135.0	6,390.0	6,234.2	37.4	28.8	167.35	-708.7	1,091.5	480.9	437.8	43.10	11.157	
6,450.0	6,182.9	6,438.4	6,281.1	37.7	28.9	-178.13	-702.6	1,101.6	484.9	442.2	42.65	11.369	
6,500.0	6,230.8	6,486.3	6,327.0	37.9	29.0	-163.64	-693.4	1,111.4	489.0	446.8	42.19	11.590	
6,550.0	6,278.5	6,533.7	6,371.8	38.1	29.0	-150.53	-681.2	1,121.0	493.2	451.4	41.74	11.817	
6,600.0	6,325.7	6,580.6	6,415.3	38.2	29.1	-139.48	-666.1	1,130.3	497.4	456.1	41.30	12.043	
6,650.0	6,372.3	6,627.1	6,457.3	38.4	29.1	-130.50	-648.4	1,139.3	501.7	460.8	40.90	12.266	
6,700.0	6,417.9	6,673.3	6,497.8	38.5	29.1	-123.29	-628.1	1,147.9	506.0	465.5	40.54	12.482	
6,750.0	6,462.3	6,719.0	6,536.7	38.6	29.1	-117.47	-605.4	1,156.2	510.2	470.0	40.22	12.686	
6,800.0	6,505.4	6,764.5	6,573.7	38.7	29.1	-112.72	-580.3	1,164.1	514.4	474.5	39.95	12.877	
6,850.0	6,546.9	6,809.6	6,608.9	38.8	29.0	-108.79	-553.1	1,171.6	518.5	478.8	39.72	13.052	
6,900.0	6,586.7	6,854.4	6,642.2	38.8	29.0	-105.51	-523.9	1,178.7	522.4	482.9	39.55	13.210	
6,950.0	6,624.5	6,900.0	6,674.1	38.8	28.9	-102.72	-492.1	1,185.5	526.2	486.8	39.42	13.349	
7,000.0	6,660.1	6,943.3	6,702.5	38.8	28.9	-100.38	-460.0	1,191.5	529.8	490.4	39.34	13.466	
7,050.0	6,693.4	6,987.4	6,729.5	38.8	28.8	-98.37	-425.6	1,197.2	533.2	493.8	39.31	13.562	
7,100.0	6,724.3	7,031.3	6,754.2	38.8	28.7	-96.65	-389.7	1,202.4	536.3	497.0	39.33	13.636	
7,150.0	6,752.4	7,075.0	6,776.7	38.7	28.6	-95.18	-352.5	1,207.1	539.2	499.8	39.40	13.686	
7,200.0	6,777.9	7,118.6	6,796.8	38.7	28.5	-93.94	-314.1	1,211.4	541.8	502.2	39.51	13.711	
7,250.0	6,800.4	7,162.0	6,814.5	38.6	28.4	-92.90	-274.6	1,215.1	544.1	504.4	39.68	13.711	
7,300.0	6,819.9	7,205.4	6,829.9	38.6	28.4	-92.04	-234.2	1,218.3	546.0	506.1	39.90	13.685	
7,350.0	6,836.3	7,250.0	6,843.1	38.5	28.3	-91.34	-191.7	1,221.0	547.7	507.5	40.18	13.631	
7,400.0	6,849.5	7,291.8	6,853.2	38.4	28.2	-90.81	-151.2	1,223.1	549.0	508.5	40.51	13.551	
7,450.0	6,859.5	7,334.9	6,861.1	38.4	28.1	-90.43	-108.8	1,224.7	550.0	509.1	40.91	13.445	
7,500.0	6,866.2	7,378.0	6,866.6	38.3	28.0	-90.19	-66.1	1,225.7	550.6	509.3	41.35	13.315	
7,550.0	6,869.6	7,421.1	6,869.5	38.2	27.9	-90.10	-23.1	1,226.3	550.9	509.0	41.85	13.163	
7,575.2	6,870.0	7,442.9	6,870.0	38.2	27.9	-90.10	-1.4	1,226.3	550.9	508.8	42.12	13.079	
7,586.9	6,870.0	7,453.5	6,870.0	38.2	27.9	-90.10	9.3	1,226.3	550.9	508.7	42.21	13.052	
7,600.0	6,870.0	7,466.6	6,870.0	38.1	27.9	-90.10	22.4	1,226.3	550.9	508.6	42.31	13.020	
7,700.0	6,870.0	7,566.6	6,870.0	38.0	27.7	-90.10	122.4	1,226.0	550.9	507.7	43.20	12.751	
7,800.0	6,870.0	7,666.6	6,870.0	38.0	27.7	-90.10	222.4	1,225.8	550.9	506.5	44.39	12.411	
7,900.0	6,870.0	7,766.6	6,870.0	38.0	27.9	-90.10	322.4	1,225.5	550.9	505.0	45.86	12.012	
8,000.0	6,870.0	7,866.6	6,870.0	38.1	28.2	-90.10	422.4	1,225.3	550.9	503.3	47.60	11.573	
8,100.0	6,870.0	7,966.6	6,870.0	38.2	28.8	-90.10	522.4	1,225.0	550.9	501.3	49.58	11.112	
8,200.0	6,870.0	8,066.6	6,870.0	38.5	29.5	-90.10	622.4	1,224.8	550.9	499.1	51.76	10.642	
8,300.0	6,870.0	8,166.6	6,870.0	38.9	30.4	-90.10	722.4	1,224.5	550.9	496.7	54.14	10.176	
8,400.0	6,870.0	8,266.6	6,870.0	39.4	31.5	-90.10	822.4	1,224.3	550.9	494.2	56.67	9.721	
8,500.0	6,870.0	8,366.6	6,870.0	40.0	32.7	-90.10	922.4	1,224.1	550.9	491.5	59.34	9.283	
8,600.0	6,870.0	8,466.6	6,870.0	40.7	34.0	-90.10	1,022.4	1,223.8	550.9	488.7	62.14	8.866	
8,700.0	6,870.0	8,566.6	6,870.0	41.5	35.3	-90.10	1,122.4	1,223.6	550.9	485.8	65.04	8.470	

CC - Min centre to center distance or convergent point, SF - min separation factor, ES - min ellipse separation

Company:	Synergy Resources	Local Co-ordinate Reference:	Well SRC Evans 43-26-23-14NHZ
Project:	SEC.26-T5N-R66W	TVD Reference:	WELL @ 4769.0ft (RKB - 15')
Reference Site:	SRC Evans East Pad Sec.26-T5N-R66W	MD Reference:	WELL @ 4769.0ft (RKB - 15')
Site Error:	0.0ft	North Reference:	True
Reference Well:	SRC Evans 43-26-23-14NHZ	Survey Calculation Method:	Minimum Curvature
Well Error:	0.0ft	Output errors are at	2.00 sigma
Reference Wellbore	Wellbore #1	Database:	Landmark
Reference Design:	Plan #1 (10-27-14)	Offset TVD Reference:	Offset Datum

Offset Design												Offset Site Error:	0.0 ft
Survey Program: 0-MWD												Offset Well Error:	0.0 ft
Reference		Offset		Semi Major Axis			Distance						Warning
Measured Depth (ft)	Vertical Depth (ft)	Measured Depth (ft)	Vertical Depth (ft)	Reference (ft)	Offset (ft)	Highside Toolface (°)	Offset Wellbore Centre +N/-S (ft)	+E/-W (ft)	Between Centres (ft)	Between Ellipses (ft)	Minimum Separation (ft)	Separation Factor	
8,800.0	6,870.0	8,666.6	6,870.0	42.5	36.8	-90.10	1,222.4	1,223.3	550.9	482.9	68.03	8.097	
8,900.0	6,870.0	8,766.6	6,870.0	43.6	38.2	-90.10	1,322.4	1,223.1	550.9	479.8	71.11	7.747	
9,000.0	6,870.0	8,866.6	6,870.0	44.7	39.7	-90.10	1,422.4	1,222.8	550.9	476.6	74.26	7.418	
9,100.0	6,870.0	8,966.6	6,870.0	45.9	41.3	-90.10	1,522.4	1,222.6	550.9	473.4	77.47	7.111	
9,200.0	6,870.0	9,066.6	6,870.0	47.2	42.9	-90.10	1,622.4	1,222.3	550.9	470.1	80.74	6.823	
9,300.0	6,870.0	9,166.6	6,870.0	48.6	44.5	-90.10	1,722.4	1,222.1	550.9	466.8	84.05	6.554	
9,400.0	6,870.0	9,266.6	6,870.0	49.9	46.1	-90.10	1,822.4	1,221.9	550.9	463.5	87.41	6.302	
9,500.0	6,870.0	9,366.6	6,870.0	51.4	47.7	-90.10	1,922.4	1,221.6	550.9	460.1	90.81	6.067	
9,600.0	6,870.0	9,466.6	6,870.0	52.9	49.4	-90.10	2,022.4	1,221.4	550.9	456.6	94.24	5.846	
9,700.0	6,870.0	9,566.6	6,870.0	54.4	51.1	-90.10	2,122.4	1,221.1	550.9	453.2	97.70	5.639	
9,800.0	6,870.0	9,666.6	6,870.0	55.9	52.8	-90.10	2,222.4	1,220.9	550.9	449.7	101.19	5.444	
9,900.0	6,870.0	9,766.6	6,870.0	57.5	54.5	-90.10	2,322.4	1,220.6	550.9	446.2	104.70	5.261	
10,000.0	6,870.0	9,866.6	6,870.0	59.1	56.2	-90.10	2,422.4	1,220.4	550.9	442.6	108.24	5.090	
10,100.0	6,870.0	9,966.6	6,870.0	60.7	58.0	-90.10	2,522.4	1,220.1	550.9	439.1	111.79	4.928	
10,200.0	6,870.0	10,066.6	6,870.0	62.4	59.7	-90.10	2,622.4	1,219.9	550.9	435.5	115.37	4.775	
10,300.0	6,870.0	10,166.6	6,870.0	64.0	61.5	-90.10	2,722.4	1,219.7	550.9	431.9	118.96	4.631	
10,400.0	6,870.0	10,266.6	6,870.0	65.7	63.3	-90.10	2,822.4	1,219.4	550.9	428.3	122.57	4.495	
10,500.0	6,870.0	10,366.6	6,870.0	67.4	65.0	-90.10	2,922.4	1,219.2	550.9	424.7	126.19	4.366	
10,600.0	6,870.0	10,466.6	6,870.0	69.1	66.8	-90.10	3,022.4	1,218.9	550.9	421.1	129.82	4.243	
10,700.0	6,870.0	10,566.6	6,870.0	70.8	68.6	-90.10	3,122.4	1,218.7	550.9	417.4	133.47	4.128	
10,800.0	6,870.0	10,666.6	6,870.0	72.5	70.4	-90.10	3,222.4	1,218.4	550.9	413.8	137.12	4.017	
10,900.0	6,870.0	10,766.6	6,870.0	74.3	72.2	-90.10	3,322.4	1,218.2	550.9	410.1	140.79	3.913	
11,000.0	6,870.0	10,866.6	6,870.0	76.0	74.0	-90.10	3,422.4	1,217.9	550.9	406.4	144.46	3.813	
11,100.0	6,870.0	10,966.6	6,870.0	77.7	75.8	-90.10	3,522.4	1,217.7	550.9	402.7	148.15	3.719	
11,200.0	6,870.0	11,066.6	6,870.0	79.5	77.7	-90.10	3,622.4	1,217.5	550.9	399.0	151.84	3.628	
11,300.0	6,870.0	11,166.6	6,870.0	81.3	79.5	-90.10	3,722.4	1,217.2	550.9	395.3	155.54	3.542	
11,400.0	6,870.0	11,266.6	6,870.0	83.0	81.3	-90.10	3,822.4	1,217.0	550.9	391.6	159.24	3.459	
11,500.0	6,870.0	11,366.6	6,870.0	84.8	83.2	-90.10	3,922.4	1,216.7	550.9	387.9	162.95	3.381	
11,600.0	6,870.0	11,466.6	6,870.0	86.6	85.0	-90.10	4,022.4	1,216.5	550.9	384.2	166.67	3.305	
11,700.0	6,870.0	11,566.6	6,870.0	88.4	86.8	-90.10	4,122.4	1,216.2	550.9	380.5	170.40	3.233	
11,800.0	6,870.0	11,666.6	6,870.0	90.2	88.7	-90.10	4,222.4	1,216.0	550.9	376.8	174.12	3.164	
11,900.0	6,870.0	11,766.6	6,870.0	92.0	90.5	-90.10	4,322.4	1,215.8	550.9	373.0	177.86	3.097	
12,000.0	6,870.0	11,866.6	6,870.0	93.8	92.4	-90.10	4,422.4	1,215.5	550.9	369.3	181.60	3.034	
12,100.0	6,870.0	11,966.6	6,870.0	95.6	94.2	-90.10	4,522.4	1,215.3	550.9	365.5	185.34	2.972	
12,200.0	6,870.0	12,066.6	6,870.0	97.4	96.1	-90.10	4,622.4	1,215.0	550.9	361.8	189.09	2.913	
12,300.0	6,870.0	12,166.6	6,870.0	99.2	97.9	-90.10	4,722.4	1,214.8	550.9	358.0	192.84	2.857	
12,400.0	6,870.0	12,266.6	6,870.0	101.1	99.8	-90.10	4,822.4	1,214.5	550.9	354.3	196.59	2.802	
12,500.0	6,870.0	12,366.6	6,870.0	102.9	101.7	-90.10	4,922.4	1,214.3	550.9	350.5	200.35	2.750	
12,600.0	6,870.0	12,466.6	6,870.0	104.7	103.5	-90.10	5,022.4	1,214.0	550.9	346.8	204.11	2.699	
12,700.0	6,870.0	12,566.6	6,870.0	106.6	105.4	-90.10	5,122.4	1,213.8	550.9	343.0	207.87	2.650	
12,800.0	6,870.0	12,666.6	6,870.0	108.4	107.2	-90.10	5,222.4	1,213.6	550.9	339.2	211.64	2.603	
12,900.0	6,870.0	12,766.6	6,870.0	110.2	109.1	-90.10	5,322.4	1,213.3	550.9	335.5	215.40	2.557	
13,000.0	6,870.0	12,866.6	6,870.0	112.1	111.0	-90.10	5,422.4	1,213.1	550.9	331.7	219.18	2.513	
13,100.0	6,870.0	12,966.6	6,870.0	113.9	112.9	-90.10	5,522.4	1,212.8	550.9	327.9	222.95	2.471	
13,200.0	6,870.0	13,066.6	6,870.0	115.8	114.7	-90.10	5,622.4	1,212.6	550.9	324.2	226.73	2.430	
13,300.0	6,870.0	13,166.6	6,870.0	117.6	116.6	-90.10	5,722.4	1,212.3	550.9	320.4	230.51	2.390	
13,400.0	6,870.0	13,266.6	6,870.0	119.5	118.5	-90.10	5,822.4	1,212.1	550.9	316.6	234.29	2.351	
13,500.0	6,870.0	13,366.6	6,870.0	121.3	120.4	-90.10	5,922.4	1,211.8	550.9	312.8	238.07	2.314	
13,600.0	6,870.0	13,466.6	6,870.0	123.2	122.2	-90.10	6,022.4	1,211.6	550.9	309.0	241.85	2.278	
13,700.0	6,870.0	13,566.6	6,870.0	125.0	124.1	-90.10	6,122.4	1,211.4	550.9	305.2	245.64	2.243	
13,800.0	6,870.0	13,666.6	6,870.0	126.9	126.0	-90.10	6,222.4	1,211.1	550.9	301.5	249.43	2.209	
13,900.0	6,870.0	13,766.6	6,870.0	128.7	127.9	-90.10	6,322.4	1,210.9	550.9	297.7	253.22	2.176	

CC - Min centre to center distance or convergent point, SF - min separation factor, ES - min ellipse separation

Offset Design												Offset Site Error:	
Survey Program: 0-MWD												Offset Well Error:	
Reference		Offset		Semi Major Axis			Distance					Warning	
Measured Depth (ft)	Vertical Depth (ft)	Measured Depth (ft)	Vertical Depth (ft)	Reference (ft)	Offset (ft)	Highside Toolface (°)	Offset Wellbore Centre +N/-S (ft)	+E/-W (ft)	Between Centres (ft)	Between Ellipses (ft)	Minimum Separation (ft)		Separation Factor
14,000.0	6,870.0	13,866.6	6,870.0	130.6	129.8	-90.10	6,422.4	1,210.6	550.9	293.9	257.01	2.143	
14,100.0	6,870.0	13,966.6	6,870.0	132.5	131.7	-90.10	6,522.4	1,210.4	550.9	290.1	260.80	2.112	
14,200.0	6,870.0	14,066.6	6,870.0	134.3	133.5	-90.10	6,622.4	1,210.1	550.9	286.3	264.59	2.082	
14,300.0	6,870.0	14,166.6	6,870.0	136.2	135.4	-90.10	6,722.4	1,209.9	550.9	282.5	268.39	2.053	
14,400.0	6,870.0	14,266.6	6,870.0	138.1	137.3	-90.10	6,822.4	1,209.6	550.9	278.7	272.19	2.024	
14,500.0	6,870.0	14,366.6	6,870.0	139.9	139.2	-90.10	6,922.4	1,209.4	550.9	274.9	275.98	1.996	
14,600.0	6,870.0	14,466.6	6,870.0	141.8	141.1	-90.10	7,022.4	1,209.2	550.9	271.1	279.78	1.969	
14,700.0	6,870.0	14,566.6	6,870.0	143.7	143.0	-90.10	7,122.4	1,208.9	550.9	267.3	283.58	1.943	
14,800.0	6,870.0	14,666.6	6,870.0	145.6	144.9	-90.10	7,222.4	1,208.7	550.9	263.5	287.39	1.917	
14,900.0	6,870.0	14,766.6	6,870.0	147.4	146.8	-90.10	7,322.4	1,208.4	550.9	259.7	291.19	1.892	
15,000.0	6,870.0	14,866.6	6,870.0	149.3	148.7	-90.10	7,422.4	1,208.2	550.9	255.9	294.99	1.867	
15,100.0	6,870.0	14,966.6	6,870.0	151.2	150.6	-90.10	7,522.4	1,207.9	550.9	252.1	298.80	1.844	
15,200.0	6,870.0	15,066.6	6,870.0	153.1	152.5	-90.10	7,622.4	1,207.7	550.9	248.3	302.60	1.820	
15,300.0	6,870.0	15,166.6	6,870.0	154.9	154.3	-90.10	7,722.4	1,207.4	550.9	244.5	306.41	1.798	
15,400.0	6,870.0	15,266.6	6,870.0	156.8	156.2	-90.10	7,822.4	1,207.2	550.9	240.7	310.22	1.776	
15,500.0	6,870.0	15,366.6	6,870.0	158.7	158.1	-90.10	7,922.4	1,207.0	550.9	236.9	314.03	1.754	
15,600.0	6,870.0	15,466.6	6,870.0	160.6	160.0	-90.10	8,022.4	1,206.7	550.9	233.0	317.84	1.733	
15,700.0	6,870.0	15,566.6	6,870.0	162.5	161.9	-90.10	8,122.4	1,206.5	550.9	229.2	321.65	1.713	
15,800.0	6,870.0	15,666.6	6,870.0	164.3	163.8	-90.10	8,222.4	1,206.2	550.9	225.4	325.46	1.693	
15,900.0	6,870.0	15,766.6	6,870.0	166.2	165.7	-90.10	8,322.4	1,206.0	550.9	221.6	329.27	1.673	
16,000.0	6,870.0	15,866.6	6,870.0	168.1	167.6	-90.10	8,422.4	1,205.7	550.9	217.8	333.08	1.654	
16,100.0	6,870.0	15,966.6	6,870.0	170.0	169.5	-90.10	8,522.4	1,205.5	550.9	214.0	336.89	1.635	
16,200.0	6,870.0	16,066.6	6,870.0	171.9	171.4	-90.10	8,622.4	1,205.2	550.9	210.2	340.71	1.617	
16,300.0	6,870.0	16,166.6	6,870.0	173.8	173.3	-90.10	8,722.4	1,205.0	550.9	206.4	344.52	1.599	
16,400.0	6,870.0	16,266.6	6,870.0	175.7	175.2	-90.10	8,822.4	1,204.8	550.9	202.5	348.34	1.581	
16,500.0	6,870.0	16,366.6	6,870.0	177.6	177.1	-90.10	8,922.4	1,204.5	550.9	198.7	352.15	1.564	
16,600.0	6,870.0	16,466.6	6,870.0	179.4	179.0	-90.10	9,022.4	1,204.3	550.9	194.9	355.97	1.548	
16,700.0	6,870.0	16,566.6	6,870.0	181.3	180.9	-90.10	9,122.4	1,204.0	550.9	191.1	359.78	1.531	
16,800.0	6,870.0	16,666.6	6,870.0	183.2	182.8	-90.10	9,222.4	1,203.8	550.9	187.3	363.60	1.515	
16,857.4	6,870.0	16,724.0	6,870.0	184.3	183.9	-90.10	9,279.8	1,203.6	550.9	185.1	365.79	1.506 SF	

Company:	Synergy Resources	Local Co-ordinate Reference:	Well SRC Evans 43-26-23-14NHZ
Project:	SEC.26-T5N-R66W	TVD Reference:	WELL @ 4769.0ft (RKB - 15')
Reference Site:	SRC Evans East Pad Sec.26-T5N-R66W	MD Reference:	WELL @ 4769.0ft (RKB - 15')
Site Error:	0.0ft	North Reference:	True
Reference Well:	SRC Evans 43-26-23-14NHZ	Survey Calculation Method:	Minimum Curvature
Well Error:	0.0ft	Output errors are at	2.00 sigma
Reference Wellbore	Wellbore #1	Database:	Landmark
Reference Design:	Plan #1 (10-27-14)	Offset TVD Reference:	Offset Datum

Offset Design													Offset Site Error:	0.0 ft
Survey Program: 0-MWD													Offset Well Error:	0.0 ft
Reference		Offset		Semi Major Axis			Distance							Warning
Measured Depth (ft)	Vertical Depth (ft)	Measured Depth (ft)	Vertical Depth (ft)	Reference (ft)	Offset (ft)	Highside Toolface (°)	Offset Wellbore Centre +N/-S (ft)	+E/-W (ft)	Between Centres (ft)	Between Ellipses (ft)	Minimum Separation (ft)	Separation Factor		
0.0	0.0	0.0	0.0	0.0	0.0	-180.00	-67.8	0.0	67.8					
100.0	100.0	98.0	98.0	0.1	0.1	-180.00	-67.8	0.0	67.8	67.5	0.22	304.516		
200.0	200.0	198.0	198.0	0.3	0.3	-180.00	-67.8	0.0	67.8	67.1	0.67	101.167		
300.0	300.0	298.0	298.0	0.6	0.6	-180.00	-67.8	0.0	67.8	66.6	1.12	60.537		
400.0	400.0	398.0	398.0	0.8	0.8	-180.00	-67.8	0.0	67.8	66.2	1.57	43.192		
500.0	500.0	498.0	498.0	1.0	1.0	66.70	-67.8	0.0	67.1	65.1	2.00	33.501		
600.0	599.8	597.8	597.8	1.2	1.2	70.96	-67.8	0.0	65.2	62.7	2.43	26.799		
700.0	699.5	697.5	697.5	1.4	1.5	78.51	-67.8	0.0	62.9	60.0	2.89	21.775		
800.0	798.7	796.7	796.7	1.7	1.7	89.63	-67.8	0.0	61.6	58.2	3.38	18.231		
802.9	801.5	799.5	799.5	1.7	1.7	90.00	-67.8	0.0	61.6	58.2	3.39	18.149 CC, ES		
900.0	897.5	895.5	895.5	2.0	1.9	103.70	-67.8	0.0	63.4	59.5	3.90	16.245		
1,000.0	995.6	993.6	993.6	2.4	2.1	118.60	-67.8	0.0	70.5	66.1	4.44	15.884 SF		
1,100.0	1,093.1	1,092.4	1,092.3	2.8	2.3	131.11	-68.7	1.2	83.1	78.1	4.93	16.850		
1,200.0	1,189.6	1,191.8	1,191.7	3.3	2.5	139.81	-71.7	5.1	99.2	93.8	5.39	18.389		
1,301.4	1,286.6	1,293.4	1,292.9	3.9	2.7	145.78	-76.9	11.9	117.6	111.8	5.87	20.035		
1,400.0	1,380.4	1,393.2	1,392.0	4.5	2.9	149.57	-84.2	21.3	135.5	129.1	6.38	21.237		
1,500.0	1,475.4	1,495.6	1,493.2	5.1	3.2	151.62	-93.9	33.9	151.4	144.4	6.94	21.811		
1,600.0	1,570.5	1,598.0	1,593.7	5.7	3.5	152.48	-105.7	49.2	164.8	157.2	7.55	21.812		
1,700.0	1,665.6	1,697.2	1,690.9	6.4	3.9	152.97	-117.8	64.9	177.3	169.1	8.20	21.636		
1,800.0	1,760.7	1,796.4	1,788.1	7.0	4.2	153.39	-129.8	80.5	189.9	181.1	8.85	21.455		
1,900.0	1,855.8	1,895.6	1,885.3	7.6	4.6	153.76	-141.9	96.2	202.5	193.0	9.52	21.278		
2,000.0	1,950.9	1,994.8	1,982.5	8.3	5.0	154.08	-154.0	111.9	215.1	204.9	10.19	21.107		
2,100.0	2,046.0	2,094.0	2,079.7	9.0	5.4	154.37	-166.1	127.5	227.7	216.9	10.87	20.946		
2,200.0	2,141.1	2,193.2	2,176.9	9.6	5.8	154.63	-178.2	143.2	240.4	228.8	11.56	20.795		
2,300.0	2,236.2	2,292.4	2,274.1	10.3	6.2	154.87	-190.3	158.9	253.0	240.7	12.25	20.655		
2,400.0	2,331.3	2,391.6	2,371.3	10.9	6.6	155.08	-202.3	174.5	265.6	252.7	12.94	20.525		
2,500.0	2,426.4	2,490.8	2,468.5	11.6	7.0	155.27	-214.4	190.2	278.2	264.6	13.64	20.405		
2,600.0	2,521.4	2,590.0	2,565.7	12.2	7.4	155.44	-226.5	205.9	290.9	276.5	14.33	20.293		
2,700.0	2,616.5	2,689.2	2,662.9	12.9	7.9	155.60	-238.6	221.6	303.5	288.5	15.03	20.189		
2,800.0	2,711.6	2,788.4	2,760.1	13.6	8.3	155.75	-250.7	237.2	316.1	300.4	15.73	20.093		
2,900.0	2,806.7	2,887.6	2,857.3	14.2	8.7	155.89	-262.7	252.9	328.8	312.3	16.44	20.003		
3,000.0	2,901.8	2,986.8	2,954.5	14.9	9.1	156.01	-274.8	268.6	341.4	324.3	17.14	19.920		
3,100.0	2,996.9	3,086.0	3,051.7	15.5	9.6	156.13	-286.9	284.2	354.0	336.2	17.84	19.842		
3,200.0	3,092.0	3,185.2	3,148.9	16.2	10.0	156.24	-299.0	299.9	366.7	348.1	18.55	19.769		
3,300.0	3,187.1	3,284.3	3,246.1	16.9	10.5	156.34	-311.1	315.6	379.3	360.1	19.25	19.700		
3,400.0	3,282.2	3,383.5	3,343.3	17.5	10.9	156.44	-323.2	331.2	392.0	372.0	19.96	19.636		
3,500.0	3,377.3	3,482.7	3,440.5	18.2	11.3	156.53	-335.2	346.9	404.6	383.9	20.67	19.576		
3,600.0	3,472.3	3,581.9	3,537.7	18.8	11.8	156.61	-347.3	362.6	417.3	395.9	21.38	19.520		
3,700.0	3,567.4	3,681.1	3,634.9	19.5	12.2	156.69	-359.4	378.3	429.9	407.8	22.08	19.466		
3,800.0	3,662.5	3,780.3	3,732.1	20.2	12.6	156.77	-371.5	393.9	442.6	419.8	22.79	19.416		
3,900.0	3,757.6	3,879.5	3,829.4	20.8	13.1	156.84	-383.6	409.6	455.2	431.7	23.50	19.368		
4,000.0	3,852.7	3,978.7	3,926.6	21.5	13.5	156.90	-395.7	425.3	467.9	443.6	24.21	19.323		
4,100.0	3,947.8	4,077.9	4,023.8	22.2	14.0	156.97	-407.7	440.9	480.5	455.6	24.92	19.281		
4,200.0	4,042.9	4,177.1	4,121.0	22.8	14.4	157.03	-419.8	456.6	493.2	467.5	25.63	19.240		
4,300.0	4,138.0	4,276.3	4,218.2	23.5	14.8	157.08	-431.9	472.3	505.8	479.5	26.34	19.202		
4,400.0	4,233.1	4,375.5	4,315.4	24.2	15.3	157.14	-444.0	487.9	518.5	491.4	27.05	19.165		
4,500.0	4,328.2	4,474.7	4,412.6	24.8	15.7	157.19	-456.1	503.6	531.1	503.3	27.76	19.130		
4,600.0	4,423.3	4,573.9	4,509.8	25.5	16.2	157.24	-468.1	519.3	543.8	515.3	28.47	19.097		
4,700.0	4,518.3	4,673.1	4,607.0	26.1	16.6	157.28	-480.2	535.0	556.4	527.2	29.18	19.065		
4,800.0	4,613.4	4,772.3	4,704.2	26.8	17.1	157.33	-492.3	550.6	569.1	539.2	29.90	19.035		
4,900.0	4,708.5	4,871.5	4,801.4	27.5	17.5	157.37	-504.4	566.3	581.7	551.1	30.61	19.006		
5,000.0	4,803.6	4,970.7	4,898.6	28.1	17.9	157.41	-516.5	582.0	594.4	563.0	31.32	18.978		

CC - Min centre to center distance or convergent point, SF - min separation factor, ES - min ellipse separation

Company:	Synergy Resources	Local Co-ordinate Reference:	Well SRC Evans 43-26-23-14NHZ
Project:	SEC.26-T5N-R66W	TVD Reference:	WELL @ 4769.0ft (RKB - 15')
Reference Site:	SRC Evans East Pad Sec.26-T5N-R66W	MD Reference:	WELL @ 4769.0ft (RKB - 15')
Site Error:	0.0ft	North Reference:	True
Reference Well:	SRC Evans 43-26-23-14NHZ	Survey Calculation Method:	Minimum Curvature
Well Error:	0.0ft	Output errors are at	2.00 sigma
Reference Wellbore	Wellbore #1	Database:	Landmark
Reference Design:	Plan #1 (10-27-14)	Offset TVD Reference:	Offset Datum

Offset Design SRC Evans East Pad Sec.26-T5N-R66W - SRC Evans S-26-23-14CHZ - Wellbore #1 - Plan #1 (10-27-													Offset Site Error:	0.0 ft
Survey Program: 0-MWD													Offset Well Error:	0.0 ft
Reference		Offset		Semi Major Axis			Distance							Warning
Measured Depth (ft)	Vertical Depth (ft)	Measured Depth (ft)	Vertical Depth (ft)	Reference (ft)	Offset (ft)	Highside Toolface (°)	Offset Wellbore Centre +N/-S (ft)	+E/-W (ft)	Between Centres (ft)	Between Ellipses (ft)	Minimum Separation (ft)	Separation Factor		
5,100.0	4,898.7	5,069.9	4,995.8	28.8	18.4	157.45	-528.6	597.6	607.0	575.0	32.03	18.952		
5,200.0	4,993.8	5,169.1	5,093.0	29.5	18.8	157.49	-540.6	613.3	619.7	586.9	32.74	18.926		
5,300.0	5,088.9	5,268.3	5,190.2	30.1	19.3	157.53	-552.7	629.0	632.3	598.9	33.45	18.902		
5,400.0	5,184.0	5,367.4	5,287.4	30.8	19.7	157.56	-564.8	644.6	645.0	610.8	34.17	18.878		
5,500.0	5,279.1	5,466.6	5,384.6	31.5	20.2	157.59	-576.9	660.3	657.6	622.8	34.88	18.856		
5,600.0	5,374.2	5,565.8	5,481.8	32.1	20.6	157.63	-589.0	676.0	670.3	634.7	35.59	18.834		
5,700.0	5,469.2	5,665.0	5,579.0	32.8	21.1	157.66	-601.0	691.7	682.9	646.6	36.30	18.813		
5,800.0	5,564.3	5,764.2	5,676.2	33.5	21.5	157.69	-613.1	707.3	695.6	658.6	37.01	18.793		
5,900.0	5,659.4	5,863.4	5,773.4	34.1	21.9	157.72	-625.2	723.0	708.3	670.5	37.73	18.773		
6,000.0	5,754.5	5,962.6	5,870.6	34.8	22.4	157.74	-637.3	738.7	720.9	682.5	38.44	18.755		
6,100.0	5,849.6	6,061.8	5,967.8	35.5	22.8	157.77	-649.4	754.3	733.6	694.4	39.15	18.737		
6,200.0	5,944.7	6,161.0	6,065.0	36.1	23.3	157.80	-661.5	770.0	746.2	706.4	39.86	18.719		
6,300.0	6,039.8	6,260.2	6,162.2	36.8	23.7	157.82	-673.5	785.7	758.9	718.3	40.58	18.702		
6,357.0	6,094.0	6,316.7	6,217.6	37.2	24.0	157.83	-680.4	794.6	766.1	725.1	40.98	18.693		
6,400.0	6,135.0	6,359.4	6,259.4	37.4	24.2	168.57	-685.6	801.3	771.5	730.4	41.12	18.762		
6,450.0	6,182.9	6,408.8	6,307.8	37.7	24.4	-177.99	-691.6	809.1	777.7	736.3	41.35	18.808		
6,500.0	6,230.8	6,457.8	6,355.8	37.9	24.6	-164.79	-697.6	816.9	783.8	742.1	41.66	18.816		
6,550.0	6,278.5	6,506.1	6,403.1	38.1	24.8	-153.16	-703.5	824.5	789.9	747.9	42.03	18.793		
6,600.0	6,325.7	6,553.7	6,450.0	38.2	25.0	-143.66	-707.9	832.1	796.1	753.8	42.39	18.782		

SRC Evans East Pad Sec.26-T5N-R66W - SRC Evans S-26-23-14NHZ - Wellbore #1 - Plan #1 (10-27-													Offset Site Error:	0.0 ft
Survey Program: 0-MWD													Offset Well Error:	0.0 ft
Reference		Offset		Semi Major Axis			Distance							
Measured Depth (ft)	Vertical Depth (ft)	Measured Depth (ft)	Vertical Depth (ft)	Reference (ft)	Offset (ft)	Highside Toolface (°)	Offset Wellbore Centre +N/-S (ft)	+E/-W (ft)	Between Centres (ft)	Between Ellipses (ft)	Minimum Separation (ft)	Separation Factor	Warning	
0.0	0.0	0.0	0.0	0.0	0.0	180.00	-90.0	0.0	90.0					
100.0	100.0	97.0	97.0	0.1	0.1	180.00	-90.0	0.0	90.0	89.8	0.22	406.434		
200.0	200.0	197.0	197.0	0.3	0.3	180.00	-90.0	0.0	90.0	89.3	0.67	134.797		
300.0	300.0	297.0	297.0	0.6	0.6	180.00	-90.0	0.0	90.0	88.9	1.12	80.553		
400.0	400.0	397.0	397.0	0.8	0.8	180.00	-90.0	0.0	90.0	88.4	1.57	57.439		
500.0	500.0	497.0	497.0	1.0	1.0	66.36	-90.0	0.0	89.3	87.3	2.00	44.652		
600.0	599.8	596.8	596.8	1.2	1.2	69.54	-90.0	0.0	87.3	84.9	2.43	35.940		
700.0	699.5	696.5	696.5	1.4	1.5	75.11	-90.0	0.0	84.6	81.8	2.88	29.354		
800.0	798.7	795.7	795.7	1.7	1.7	83.32	-90.0	0.0	82.3	79.0	3.37	24.404		
864.4	862.3	859.3	859.3	1.9	1.8	90.00	-90.0	0.0	81.8	78.1	3.72	21.989 CC, ES		
900.0	897.5	894.5	894.5	2.0	1.9	94.11	-90.0	0.0	82.0	78.1	3.91	20.972		
1,000.0	995.6	992.6	992.6	2.4	2.1	106.68	-90.0	0.0	85.5	81.0	4.48	19.106		
1,100.0	1,093.1	1,090.1	1,090.1	2.8	2.3	119.43	-90.0	0.0	94.6	89.6	5.04	18.776 SF		
1,200.0	1,189.6	1,186.6	1,186.6	3.3	2.6	130.80	-90.0	0.0	109.9	104.3	5.56	19.753		
1,301.4	1,286.6	1,285.5	1,285.5	3.9	2.8	139.85	-90.9	0.9	131.0	124.9	6.05	21.665		
1,400.0	1,380.4	1,383.1	1,383.0	4.5	2.9	145.82	-94.2	4.0	153.3	146.8	6.50	23.584		
1,500.0	1,475.4	1,483.6	1,483.2	5.1	3.1	149.45	-100.2	9.6	175.1	168.1	6.99	25.049		
1,600.0	1,570.5	1,585.6	1,584.4	5.7	3.4	151.48	-108.8	17.8	195.1	187.5	7.52	25.938		
1,700.0	1,665.6	1,688.8	1,686.4	6.4	3.6	152.38	-120.2	28.6	212.9	204.8	8.11	26.267		
1,800.0	1,760.7	1,788.8	1,784.8	7.0	3.9	152.62	-133.2	40.8	229.1	220.3	8.74	26.224		
1,900.0	1,855.8	1,887.5	1,881.9	7.6	4.2	152.80	-146.0	53.0	245.2	235.8	9.39	26.118		
2,000.0	1,950.9	1,986.2	1,979.0	8.3	4.5	152.96	-158.9	65.1	261.2	251.2	10.05	25.989		
2,100.0	2,046.0	2,084.9	2,076.1	9.0	4.8	153.10	-171.7	77.3	277.3	266.6	10.73	25.853		
2,200.0	2,141.1	2,183.6	2,173.2	9.6	5.2	153.23	-184.6	89.4	293.4	282.0	11.41	25.704		
2,300.0	2,236.2	2,282.3	2,270.3	10.3	5.5	153.34	-197.5	101.6	309.5	297.4	12.11	25.558		
2,400.0	2,331.3	2,381.0	2,367.4	10.9	5.9	153.44	-210.3	113.7	325.6	312.8	12.81	25.415		
2,500.0	2,426.4	2,479.7	2,464.5	11.6	6.3	153.53	-223.2	125.9	341.7	328.1	13.52	25.277		
2,600.0	2,521.4	2,578.4	2,561.6	12.2	6.6	153.62	-236.0	138.0	357.7	343.5	14.23	25.145		
2,700.0	2,616.5	2,677.1	2,658.7	12.9	7.0	153.69	-248.9	150.2	373.8	358.9	14.94	25.018		
2,800.0	2,711.6	2,775.8	2,755.8	13.6	7.4	153.76	-261.8	162.4	389.9	374.3	15.66	24.898		
2,900.0	2,806.7	2,874.5	2,852.9	14.2	7.8	153.83	-274.6	174.5	406.0	389.6	16.38	24.784		
3,000.0	2,901.8	2,973.2	2,950.0	14.9	8.2	153.89	-287.5	186.7	422.1	405.0	17.11	24.676		
3,100.0	2,996.9	3,071.9	3,047.1	15.5	8.5	153.94	-300.3	198.8	438.2	420.4	17.83	24.574		
3,200.0	3,092.0	3,170.5	3,144.2	16.2	8.9	154.00	-313.2	211.0	454.3	435.7	18.56	24.478		
3,300.0	3,187.1	3,269.2	3,241.3	16.9	9.3	154.04	-326.1	223.1	470.4	451.1	19.29	24.386		
3,400.0	3,282.2	3,367.9	3,338.4	17.5	9.7	154.09	-338.9	235.3	486.5	466.4	20.02	24.300		
3,500.0	3,377.3	3,466.6	3,435.5	18.2	10.1	154.13	-351.8	247.4	502.5	481.8	20.75	24.218		
3,600.0	3,472.3	3,565.3	3,532.6	18.8	10.5	154.17	-364.7	259.6	518.6	497.2	21.48	24.140		
3,700.0	3,567.4	3,664.0	3,629.7	19.5	10.9	154.21	-377.5	271.7	534.7	512.5	22.22	24.066		
3,800.0	3,662.5	3,762.7	3,726.8	20.2	11.3	154.24	-390.4	283.9	550.8	527.9	22.95	23.996		
3,900.0	3,757.6	3,861.4	3,823.9	20.8	11.7	154.27	-403.2	296.1	566.9	543.2	23.69	23.930		
4,000.0	3,852.7	3,960.1	3,921.0	21.5	12.1	154.30	-416.1	308.2	583.0	558.6	24.43	23.867		
4,100.0	3,947.8	4,058.8	4,018.1	22.2	12.5	154.33	-429.0	320.4	599.1	573.9	25.17	23.806		
4,200.0	4,042.9	4,157.5	4,115.2	22.8	12.9	154.36	-441.8	332.5	615.2	589.3	25.90	23.749		
4,300.0	4,138.0	4,256.2	4,212.3	23.5	13.3	154.39	-454.7	344.7	631.3	604.6	26.64	23.694		
4,400.0	4,233.1	4,354.9	4,309.4	24.2	13.7	154.41	-467.5	356.8	647.4	620.0	27.38	23.642		
4,500.0	4,328.2	4,453.6	4,406.5	24.8	14.1	154.44	-480.4	369.0	663.5	635.3	28.12	23.592		
4,600.0	4,423.3	4,552.3	4,503.5	25.5	14.5	154.46	-493.3	381.1	679.6	650.7	28.86	23.545		
4,700.0	4,518.3	4,651.0	4,600.6	26.1	14.9	154.48	-506.1	393.3	695.7	666.0	29.60	23.499		
4,800.0	4,613.4	4,749.7	4,697.7	26.8	15.3	154.50	-519.0	405.5	711.7	681.4	30.34	23.455		
4,900.0	4,708.5	4,848.4	4,794.8	27.5	15.7	154.52	-531.9	417.6	727.8	696.8	31.09	23.414		
5,000.0	4,803.6	4,947.1	4,891.9	28.1	16.1	154.54	-544.7	429.8	743.9	712.1	31.83	23.373		

COMPASS 2003.21 Build 46

Company:	Synergy Resources	Local Co-ordinate Reference:	Well SRC Evans 43-26-23-14NHZ
Project:	SEC.26-T5N-R66W	TVD Reference:	WELL @ 4769.0ft (RKB - 15')
Reference Site:	SRC Evans East Pad Sec.26-T5N-R66W	MD Reference:	WELL @ 4769.0ft (RKB - 15')
Site Error:	0.0ft	North Reference:	True
Reference Well:	SRC Evans 43-26-23-14NHZ	Survey Calculation Method:	Minimum Curvature
Well Error:	0.0ft	Output errors are at	2.00 sigma
Reference Wellbore	Wellbore #1	Database:	Landmark
Reference Design:	Plan #1 (10-27-14)	Offset TVD Reference:	Offset Datum

Offset Design												Offset Site Error:	0.0 ft
SRC Evans East Pad Sec.26-T5N-R66W - SRC Evans S-26-23-14NHZ - Wellbore #1 - Plan #1 (10-27-												Offset Well Error:	0.0 ft
Survey Program: 0-MWD													
Reference		Offset		Semi Major Axis			Distance						
Measured Depth (ft)	Vertical Depth (ft)	Measured Depth (ft)	Vertical Depth (ft)	Reference (ft)	Offset (ft)	Highside Toolface (°)	Offset Wellbore Centre +N/-S (ft)	Offset Wellbore Centre +E/-W (ft)	Between Centres (ft)	Between Ellipses (ft)	Minimum Separation (ft)	Separation Factor	Warning
5,100.0	4,898.7	5,045.8	4,989.0	28.8	16.6	154.56	-557.6	441.9	760.0	727.5	32.57	23.335	
5,200.0	4,993.8	5,144.5	5,086.1	29.5	17.0	154.57	-570.4	454.1	776.1	742.8	33.31	23.298	
5,300.0	5,088.9	5,243.2	5,183.2	30.1	17.4	154.59	-583.3	466.2	792.2	758.2	34.06	23.262	

Reference Depths are relative to WELL @ 4769.0ft (RKB - 15')
Offset Depths are relative to Offset Datum
Central Meridian is -105.500000 °








Coordinates are relative to: SRC Evans 43-26-23-14NHZ
Coordinate System is US State Plane 1983, Colorado Northern Zone
Grid Convergence at Surface is: 0.49°



Local Co-ordinate Reference:	Well SRC Evans 43-26-23-14NHZ
TVD Reference:	WELL @ 4769.0ft (RKB - 15')
MD Reference:	WELL @ 4769.0ft (RKB - 15')
North Reference:	True
Survey Calculation Method:	Minimum Curvature
Output errors are at	2.00 sigma
Database:	Landmark
Offset TVD Reference:	Offset Datum

Grid Convergence at Surface is: 0.49°



40CHZ, Wellbore #1, Plan #1 (10-27-14) V0		SRC Evans 43-26-23-14CHZ, Wellbore #1, Plan #1 (10-27-14) V0		SRC Evans S-26-23-14NHZ, Wellbore #1, Plan #1 (10-27-14) V0
14NHZ, Wellbore #1, Plan #1 (10-27-14) V0		SRC Evans D-26-23-14CHZ, Wellbore #1, Plan #1 (10-27-14) V0		Mantel J 23-16 (P&A), Wellbore #1, Plan #1 (10-27-14) V0
Wellbore #1, Wellbore #1 V0		SRC Evans D-26-23-14NHZ, Wellbore #1, Plan #1 (10-27-14) V0		Mantel J23-9 (P&A), Wellbore #1, Plan #1 (10-27-14) V0
40CHZ, Wellbore #1, Plan #1 (10-27-14) V0		SRC Evans 33-26-23-14CHZ, Wellbore #1, Plan #1 (10-27-14) V0		