

# Synergy Resources

Well Name: **SRC Evans D-26-23-14CHZ**

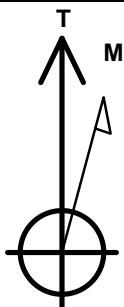
Surface Location: SRC Evans East Pad Sec.26-T5N-R66W  
North American Datum 1983 , US State Plane 1983 , Colorado Northern Zone

Ground Elevation: 4754.0

+N/-S	+E/-W	Northing	Easting	Latitude	Longitude	Slot
0.0	0.0	1379433.12	3211050.24	40.372471	-104.742516	
RKB - 15' WELL @ 4769.0ft (RKB - 15')						

## WELLBORE TARGET DETAILS

Name	TVD	+N/-S	+E/-W	Shape
SHL 1912'FNL, 2130'FEL, SEC.26	1.0	0.0	0.0	Point
BHL 2166'FSL, 626'FEL, SEC.14	7200.0	9314.0	1480.1	Point



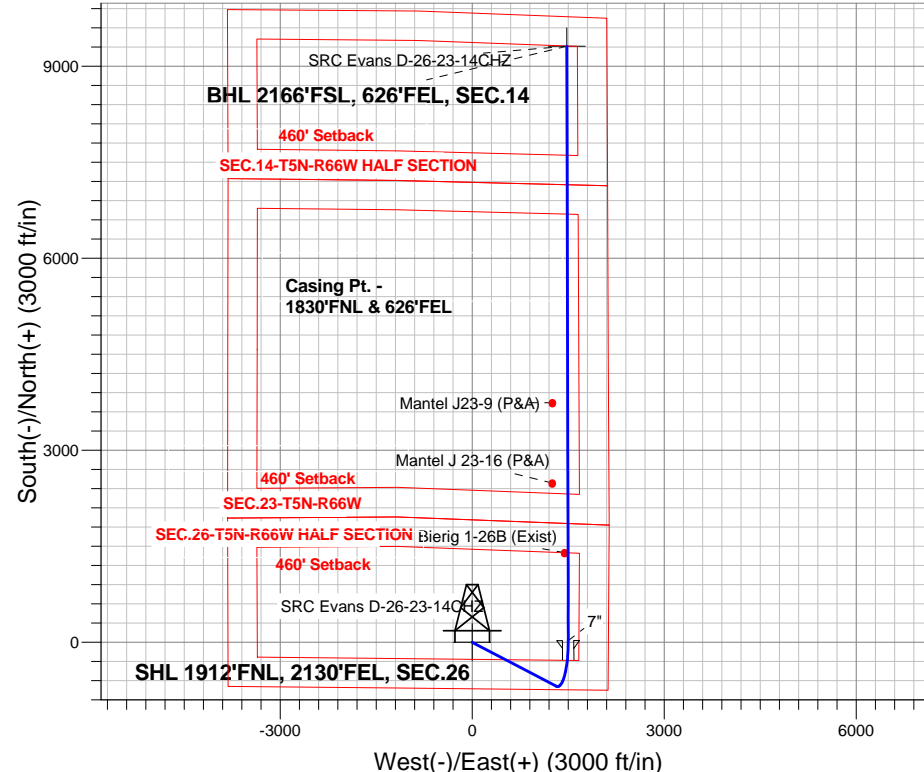
Azimuths to True North  
Magnetic North: 8.39°

Magnetic Field  
Strength: 52764.2snT  
Dip Angle: 66.91°  
Date: 10/30/2014  
Model: IGRF2010

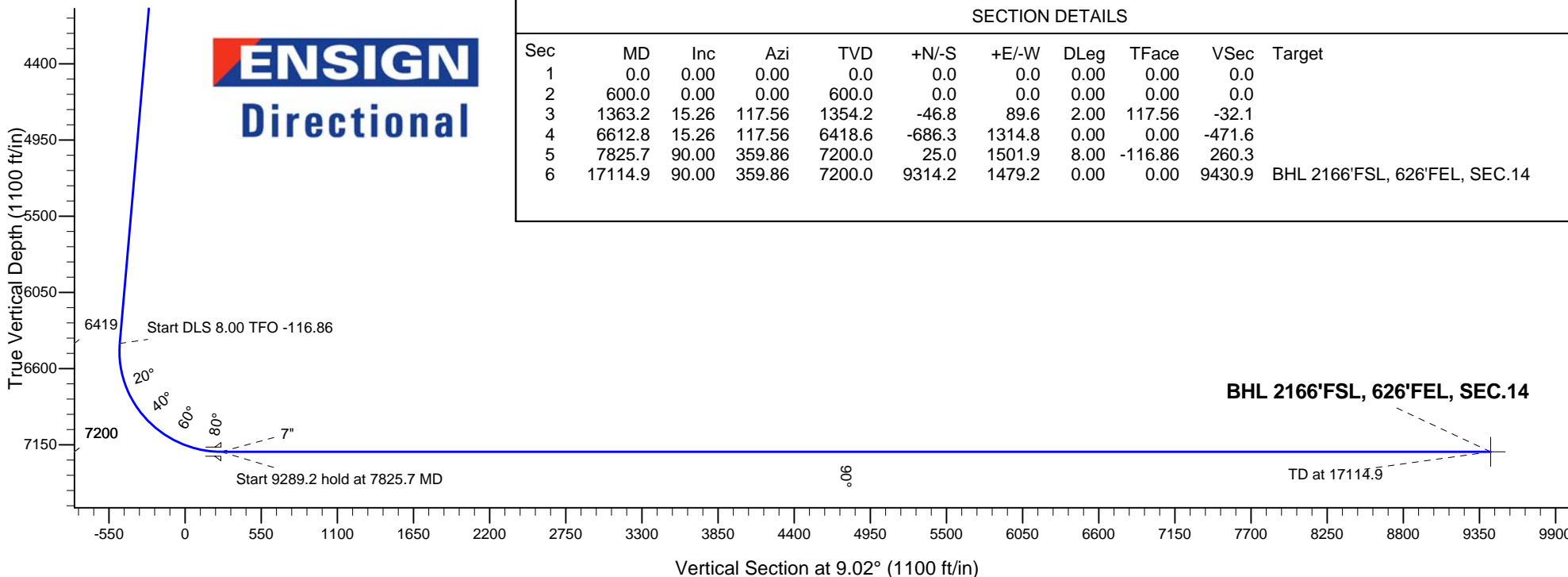
SRC Evans East Pad Sec.26-T5N-R66W  
SRC Evans D-26-23-14CHZ  
Plan #1 (10-27-14)  
13:46, October 30 2014

## ANNOTATIONS

TVD	MD	Annotation
600.0	600.0	KOP - Start Build 2.00
1354.2	1363.2	Start 5249.6 hold at 1363.2 MD
6418.6	6612.8	Start DLS 8.00 TFO -116.86
7200.0	7825.7	Start 9289.2 hold at 7825.7 MD
7200.0	17114.9	TD at 17114.9



**ENSIGN**  
Directional



## SECTION DETAILS

Sec	MD	Inc	Azi	TVD	+N/-S	+E/-W	DLeg	TFace	VSec	Target
1	0.0	0.00	0.00	0.0	0.0	0.0	0.00	0.00	0.0	
2	600.0	0.00	0.00	600.0	0.0	0.0	0.00	0.00	0.0	
3	1363.2	15.26	117.56	1354.2	-46.8	89.6	2.00	117.56	-32.1	
4	6612.8	15.26	117.56	6418.6	-686.3	1314.8	0.00	0.00	-471.6	
5	7825.7	90.00	359.86	7200.0	25.0	1501.9	8.00	-116.86	260.3	
6	17114.9	90.00	359.86	7200.0	9314.2	1479.2	0.00	0.00	9430.9	BHL 2166'FSL, 626'FEL, SEC.14



## **Synergy Resources**

**SEC.26-T5N-R66W**

**SRC Evans East Pad Sec.26-T5N-R66W**

**SRC Evans D-26-23-14CHZ**

**Wellbore #1**

**Plan: Plan #1 (10-27-14)**

## **Standard Planning Report**

**30 October, 2014**

Plan Sections										
Measured Depth (ft)	Inclination (°)	Azimuth (°)	Vertical Depth (ft)	+N/-S (ft)	+E/-W (ft)	Dogleg Rate (°/100ft)	Build Rate (°/100ft)	Turn Rate (°/100ft)	TFO (°)	Target
0.0	0.00	0.00	0.0	0.0	0.0	0.00	0.00	0.00	0.00	
600.0	0.00	0.00	600.0	0.0	0.0	0.00	0.00	0.00	0.00	
1,363.2	15.26	117.56	1,354.2	-46.8	89.6	2.00	2.00	0.00	117.56	
6,612.8	15.26	117.56	6,418.6	-686.3	1,314.8	0.00	0.00	0.00	0.00	
7,825.7	90.00	359.86	7,200.0	25.0	1,501.9	8.00	6.16	-9.70	-116.86	
17,114.9	90.00	359.86	7,200.0	9,314.2	1,479.2	0.00	0.00	0.00	0.00	BHL 2166'FSL, 626

<b>Database:</b>	Landmark	<b>Local Co-ordinate Reference:</b>	Well SRC Evans D-26-23-14CHZ
<b>Company:</b>	Synergy Resources	<b>TVD Reference:</b>	WELL @ 4769.0ft (RKB - 15')
<b>Project:</b>	SEC.26-T5N-R66W	<b>MD Reference:</b>	WELL @ 4769.0ft (RKB - 15')
<b>Site:</b>	SRC Evans East Pad Sec.26-T5N-R66W	<b>North Reference:</b>	True
<b>Well:</b>	SRC Evans D-26-23-14CHZ	<b>Survey Calculation Method:</b>	Minimum Curvature
<b>Wellbore:</b>	Wellbore #1		
<b>Design:</b>	Plan #1 (10-27-14)		

Planned Survey									
Measured Depth (ft)	Inclination (°)	Azimuth (°)	Vertical Depth (ft)	+N/-S (ft)	+E/-W (ft)	Vertical Section (ft)	Dogleg Rate (°/100ft)	Build Rate (°/100ft)	Turn Rate (°/100ft)
0.0	0.00	0.00	0.0	0.0	0.0	0.0	0.00	0.00	0.00
1.0	0.00	0.00	1.0	0.0	0.0	0.0	0.00	0.00	0.00
<b>SHL 1912'FNL, 2130'FEL, SEC.26</b>									
100.0	0.00	0.00	100.0	0.0	0.0	0.0	0.00	0.00	0.00
200.0	0.00	0.00	200.0	0.0	0.0	0.0	0.00	0.00	0.00
300.0	0.00	0.00	300.0	0.0	0.0	0.0	0.00	0.00	0.00
400.0	0.00	0.00	400.0	0.0	0.0	0.0	0.00	0.00	0.00
500.0	0.00	0.00	500.0	0.0	0.0	0.0	0.00	0.00	0.00
600.0	0.00	0.00	600.0	0.0	0.0	0.0	0.00	0.00	0.00
<b>KOP - Start Build 2.00</b>									
700.0	2.00	117.56	700.0	-0.8	1.5	-0.6	2.00	2.00	0.00
800.0	4.00	117.56	799.8	-3.2	6.2	-2.2	2.00	2.00	0.00
900.0	6.00	117.56	899.5	-7.3	13.9	-5.0	2.00	2.00	0.00
1,000.0	8.00	117.56	998.7	-12.9	24.7	-8.9	2.00	2.00	0.00
1,100.0	10.00	117.56	1,097.5	-20.1	38.6	-13.8	2.00	2.00	0.00
1,200.0	12.00	117.56	1,195.6	-29.0	55.5	-19.9	2.00	2.00	0.00
1,300.0	14.00	117.56	1,293.1	-39.4	75.4	-27.1	2.00	2.00	0.00
1,363.2	15.26	117.56	1,354.2	-46.8	89.6	-32.1	2.00	2.00	0.00
<b>Start 5249.6 hold at 1363.2 MD</b>									
1,400.0	15.26	117.56	1,389.7	-51.2	98.2	-35.2	0.00	0.00	0.00
1,500.0	15.26	117.56	1,486.2	-63.4	121.5	-43.6	0.00	0.00	0.00
1,600.0	15.26	117.56	1,582.7	-75.6	144.9	-52.0	0.00	0.00	0.00
1,700.0	15.26	117.56	1,679.1	-87.8	168.2	-60.3	0.00	0.00	0.00
1,800.0	15.26	117.56	1,775.6	-100.0	191.5	-68.7	0.00	0.00	0.00
1,900.0	15.26	117.56	1,872.1	-112.2	214.9	-77.1	0.00	0.00	0.00
2,000.0	15.26	117.56	1,968.5	-124.3	238.2	-85.4	0.00	0.00	0.00
2,100.0	15.26	117.56	2,065.0	-136.5	261.6	-93.8	0.00	0.00	0.00
2,200.0	15.26	117.56	2,161.5	-148.7	284.9	-102.2	0.00	0.00	0.00
2,300.0	15.26	117.56	2,258.0	-160.9	308.2	-110.5	0.00	0.00	0.00
2,400.0	15.26	117.56	2,354.4	-173.1	331.6	-118.9	0.00	0.00	0.00
2,500.0	15.26	117.56	2,450.9	-185.2	354.9	-127.3	0.00	0.00	0.00
2,600.0	15.26	117.56	2,547.4	-197.4	378.3	-135.7	0.00	0.00	0.00
2,700.0	15.26	117.56	2,643.8	-209.6	401.6	-144.0	0.00	0.00	0.00
2,800.0	15.26	117.56	2,740.3	-221.8	424.9	-152.4	0.00	0.00	0.00
2,900.0	15.26	117.56	2,836.8	-234.0	448.3	-160.8	0.00	0.00	0.00
3,000.0	15.26	117.56	2,933.3	-246.2	471.6	-169.1	0.00	0.00	0.00
3,100.0	15.26	117.56	3,029.7	-258.3	495.0	-177.5	0.00	0.00	0.00
3,200.0	15.26	117.56	3,126.2	-270.5	518.3	-185.9	0.00	0.00	0.00
3,300.0	15.26	117.56	3,222.7	-282.7	541.6	-194.3	0.00	0.00	0.00
3,400.0	15.26	117.56	3,319.1	-294.9	565.0	-202.6	0.00	0.00	0.00
3,500.0	15.26	117.56	3,415.6	-307.1	588.3	-211.0	0.00	0.00	0.00
3,600.0	15.26	117.56	3,512.1	-319.2	611.7	-219.4	0.00	0.00	0.00
3,700.0	15.26	117.56	3,608.6	-331.4	635.0	-227.7	0.00	0.00	0.00
3,800.0	15.26	117.56	3,705.0	-343.6	658.3	-236.1	0.00	0.00	0.00
3,900.0	15.26	117.56	3,801.5	-355.8	681.7	-244.5	0.00	0.00	0.00
4,000.0	15.26	117.56	3,898.0	-368.0	705.0	-252.8	0.00	0.00	0.00
4,100.0	15.26	117.56	3,994.5	-380.2	728.4	-261.2	0.00	0.00	0.00
4,200.0	15.26	117.56	4,090.9	-392.3	751.7	-269.6	0.00	0.00	0.00
4,300.0	15.26	117.56	4,187.4	-404.5	775.0	-278.0	0.00	0.00	0.00
4,400.0	15.26	117.56	4,283.9	-416.7	798.4	-286.3	0.00	0.00	0.00
4,500.0	15.26	117.56	4,380.3	-428.9	821.7	-294.7	0.00	0.00	0.00
4,600.0	15.26	117.56	4,476.8	-441.1	845.1	-303.1	0.00	0.00	0.00
4,700.0	15.26	117.56	4,573.3	-453.3	868.4	-311.4	0.00	0.00	0.00

<b>Database:</b>	Landmark	<b>Local Co-ordinate Reference:</b>	Well SRC Evans D-26-23-14CHZ
<b>Company:</b>	Synergy Resources	<b>TVD Reference:</b>	WELL @ 4769.0ft (RKB - 15')
<b>Project:</b>	SEC.26-T5N-R66W	<b>MD Reference:</b>	WELL @ 4769.0ft (RKB - 15')
<b>Site:</b>	SRC Evans East Pad Sec.26-T5N-R66W	<b>North Reference:</b>	True
<b>Well:</b>	SRC Evans D-26-23-14CHZ	<b>Survey Calculation Method:</b>	Minimum Curvature
<b>Wellbore:</b>	Wellbore #1		
<b>Design:</b>	Plan #1 (10-27-14)		

Planned Survey									
Measured Depth (ft)	Inclination (°)	Azimuth (°)	Vertical Depth (ft)	+N/-S (ft)	+E/-W (ft)	Vertical Section (ft)	Dogleg Rate (°/100ft)	Build Rate (°/100ft)	Turn Rate (°/100ft)
4,800.0	15.26	117.56	4,669.8	-465.4	891.7	-319.8	0.00	0.00	0.00
4,900.0	15.26	117.56	4,766.2	-477.6	915.1	-328.2	0.00	0.00	0.00
5,000.0	15.26	117.56	4,862.7	-489.8	938.4	-336.5	0.00	0.00	0.00
5,100.0	15.26	117.56	4,959.2	-502.0	961.8	-344.9	0.00	0.00	0.00
5,200.0	15.26	117.56	5,055.6	-514.2	985.1	-353.3	0.00	0.00	0.00
5,300.0	15.26	117.56	5,152.1	-526.3	1,008.4	-361.7	0.00	0.00	0.00
5,400.0	15.26	117.56	5,248.6	-538.5	1,031.8	-370.0	0.00	0.00	0.00
5,500.0	15.26	117.56	5,345.1	-550.7	1,055.1	-378.4	0.00	0.00	0.00
5,600.0	15.26	117.56	5,441.5	-562.9	1,078.4	-386.8	0.00	0.00	0.00
5,700.0	15.26	117.56	5,538.0	-575.1	1,101.8	-395.1	0.00	0.00	0.00
5,800.0	15.26	117.56	5,634.5	-587.3	1,125.1	-403.5	0.00	0.00	0.00
5,900.0	15.26	117.56	5,730.9	-599.4	1,148.5	-411.9	0.00	0.00	0.00
6,000.0	15.26	117.56	5,827.4	-611.6	1,171.8	-420.3	0.00	0.00	0.00
6,100.0	15.26	117.56	5,923.9	-623.8	1,195.1	-428.6	0.00	0.00	0.00
6,200.0	15.26	117.56	6,020.4	-636.0	1,218.5	-437.0	0.00	0.00	0.00
6,300.0	15.26	117.56	6,116.8	-648.2	1,241.8	-445.4	0.00	0.00	0.00
6,400.0	15.26	117.56	6,213.3	-660.3	1,265.2	-453.7	0.00	0.00	0.00
6,500.0	15.26	117.56	6,309.8	-672.5	1,288.5	-462.1	0.00	0.00	0.00
6,600.0	15.26	117.56	6,406.3	-684.7	1,311.8	-470.5	0.00	0.00	0.00
6,612.8	15.26	117.56	6,418.6	-686.3	1,314.8	-471.6	0.00	0.00	0.00
Start DLS 8.00 TFO -116.86									
6,700.0	13.58	90.10	6,503.1	-691.6	1,335.3	-473.6	8.00	-1.93	-31.50
6,800.0	15.70	59.15	6,600.0	-684.7	1,358.7	-463.1	8.00	2.11	-30.96
6,900.0	20.83	39.28	6,695.1	-663.9	1,381.6	-439.0	8.00	5.13	-19.86
7,000.0	27.33	27.74	6,786.4	-629.8	1,403.6	-401.9	8.00	6.50	-11.55
7,100.0	34.43	20.50	6,872.2	-582.9	1,424.2	-352.3	8.00	7.10	-7.23
7,200.0	41.82	15.53	6,950.8	-524.2	1,443.0	-291.4	8.00	7.39	-4.97
7,300.0	49.37	11.82	7,020.7	-454.9	1,459.8	-220.3	8.00	7.55	-3.70
7,400.0	57.02	8.88	7,080.6	-376.1	1,474.0	-140.3	8.00	7.65	-2.94
7,500.0	64.72	6.41	7,129.2	-289.6	1,485.6	-53.0	8.00	7.70	-2.47
7,600.0	72.46	4.24	7,165.7	-197.0	1,494.2	39.8	8.00	7.74	-2.17
7,700.0	80.23	2.25	7,189.3	-100.1	1,499.6	136.4	8.00	7.76	-1.99
7,800.0	88.00	0.34	7,199.6	-0.7	1,501.9	234.9	8.00	7.77	-1.90
7,825.7	90.00	359.86	7,200.0	25.0	1,501.9	260.2	8.00	7.78	-1.88
Start 9289.2 hold at 7825.7 MD - 7"									
7,900.0	90.00	359.86	7,200.0	99.3	1,501.7	333.6	0.00	0.00	0.00
8,000.0	90.00	359.86	7,200.0	199.3	1,501.5	432.3	0.00	0.00	0.00
8,100.0	90.00	359.86	7,200.0	299.3	1,501.2	531.0	0.00	0.00	0.00
8,200.0	90.00	359.86	7,200.0	399.3	1,501.0	629.8	0.00	0.00	0.00
8,300.0	90.00	359.86	7,200.0	499.3	1,500.7	728.5	0.00	0.00	0.00
8,400.0	90.00	359.86	7,200.0	599.3	1,500.5	827.2	0.00	0.00	0.00
8,500.0	90.00	359.86	7,200.0	699.3	1,500.3	925.9	0.00	0.00	0.00
8,600.0	90.00	359.86	7,200.0	799.3	1,500.0	1,024.7	0.00	0.00	0.00
8,700.0	90.00	359.86	7,200.0	899.3	1,499.8	1,123.4	0.00	0.00	0.00
8,800.0	90.00	359.86	7,200.0	999.3	1,499.5	1,222.1	0.00	0.00	0.00
8,900.0	90.00	359.86	7,200.0	1,099.3	1,499.3	1,320.8	0.00	0.00	0.00
9,000.0	90.00	359.86	7,200.0	1,199.3	1,499.0	1,419.6	0.00	0.00	0.00
9,100.0	90.00	359.86	7,200.0	1,299.3	1,498.8	1,518.3	0.00	0.00	0.00
9,200.0	90.00	359.86	7,200.0	1,399.3	1,498.5	1,617.0	0.00	0.00	0.00
9,300.0	90.00	359.86	7,200.0	1,499.3	1,498.3	1,715.7	0.00	0.00	0.00
9,400.0	90.00	359.86	7,200.0	1,599.3	1,498.1	1,814.5	0.00	0.00	0.00
9,500.0	90.00	359.86	7,200.0	1,699.3	1,497.8	1,913.2	0.00	0.00	0.00
9,600.0	90.00	359.86	7,200.0	1,799.3	1,497.6	2,011.9	0.00	0.00	0.00
9,700.0	90.00	359.86	7,200.0	1,899.3	1,497.3	2,110.6	0.00	0.00	0.00

<b>Database:</b>	Landmark	<b>Local Co-ordinate Reference:</b>	Well SRC Evans D-26-23-14CHZ
<b>Company:</b>	Synergy Resources	<b>TVD Reference:</b>	WELL @ 4769.0ft (RKB - 15')
<b>Project:</b>	SEC.26-T5N-R66W	<b>MD Reference:</b>	WELL @ 4769.0ft (RKB - 15')
<b>Site:</b>	SRC Evans East Pad Sec.26-T5N-R66W	<b>North Reference:</b>	True
<b>Well:</b>	SRC Evans D-26-23-14CHZ	<b>Survey Calculation Method:</b>	Minimum Curvature
<b>Wellbore:</b>	Wellbore #1		
<b>Design:</b>	Plan #1 (10-27-14)		

Planned Survey									
Measured Depth (ft)	Inclination (°)	Azimuth (°)	Vertical Depth (ft)	+N/-S (ft)	+E/-W (ft)	Vertical Section (ft)	Dogleg Rate (°/100ft)	Build Rate (°/100ft)	Turn Rate (°/100ft)
9,800.0	90.00	359.86	7,200.0	1,999.3	1,497.1	2,209.4	0.00	0.00	0.00
9,900.0	90.00	359.86	7,200.0	2,099.3	1,496.8	2,308.1	0.00	0.00	0.00
10,000.0	90.00	359.86	7,200.0	2,199.3	1,496.6	2,406.8	0.00	0.00	0.00
10,100.0	90.00	359.86	7,200.0	2,299.3	1,496.3	2,505.5	0.00	0.00	0.00
10,200.0	90.00	359.86	7,200.0	2,399.3	1,496.1	2,604.2	0.00	0.00	0.00
10,300.0	90.00	359.86	7,200.0	2,499.3	1,495.9	2,703.0	0.00	0.00	0.00
10,400.0	90.00	359.86	7,200.0	2,599.3	1,495.6	2,801.7	0.00	0.00	0.00
10,500.0	90.00	359.86	7,200.0	2,699.3	1,495.4	2,900.4	0.00	0.00	0.00
10,600.0	90.00	359.86	7,200.0	2,799.3	1,495.1	2,999.1	0.00	0.00	0.00
10,700.0	90.00	359.86	7,200.0	2,899.3	1,494.9	3,097.9	0.00	0.00	0.00
10,800.0	90.00	359.86	7,200.0	2,999.3	1,494.6	3,196.6	0.00	0.00	0.00
10,900.0	90.00	359.86	7,200.0	3,099.3	1,494.4	3,295.3	0.00	0.00	0.00
11,000.0	90.00	359.86	7,200.0	3,199.3	1,494.1	3,394.0	0.00	0.00	0.00
11,100.0	90.00	359.86	7,200.0	3,299.3	1,493.9	3,492.8	0.00	0.00	0.00
11,200.0	90.00	359.86	7,200.0	3,399.3	1,493.7	3,591.5	0.00	0.00	0.00
11,300.0	90.00	359.86	7,200.0	3,499.3	1,493.4	3,690.2	0.00	0.00	0.00
11,400.0	90.00	359.86	7,200.0	3,599.3	1,493.2	3,788.9	0.00	0.00	0.00
11,500.0	90.00	359.86	7,200.0	3,699.3	1,492.9	3,887.7	0.00	0.00	0.00
11,600.0	90.00	359.86	7,200.0	3,799.3	1,492.7	3,986.4	0.00	0.00	0.00
11,700.0	90.00	359.86	7,200.0	3,899.3	1,492.4	4,085.1	0.00	0.00	0.00
11,800.0	90.00	359.86	7,200.0	3,999.3	1,492.2	4,183.8	0.00	0.00	0.00
11,900.0	90.00	359.86	7,200.0	4,099.3	1,491.9	4,282.5	0.00	0.00	0.00
12,000.0	90.00	359.86	7,200.0	4,199.3	1,491.7	4,381.3	0.00	0.00	0.00
12,100.0	90.00	359.86	7,200.0	4,299.3	1,491.5	4,480.0	0.00	0.00	0.00
12,200.0	90.00	359.86	7,200.0	4,399.3	1,491.2	4,578.7	0.00	0.00	0.00
12,300.0	90.00	359.86	7,200.0	4,499.3	1,491.0	4,677.4	0.00	0.00	0.00
12,400.0	90.00	359.86	7,200.0	4,599.3	1,490.7	4,776.2	0.00	0.00	0.00
12,500.0	90.00	359.86	7,200.0	4,699.3	1,490.5	4,874.9	0.00	0.00	0.00
12,600.0	90.00	359.86	7,200.0	4,799.3	1,490.2	4,973.6	0.00	0.00	0.00
12,700.0	90.00	359.86	7,200.0	4,899.3	1,490.0	5,072.3	0.00	0.00	0.00
12,800.0	90.00	359.86	7,200.0	4,999.3	1,489.7	5,171.1	0.00	0.00	0.00
12,900.0	90.00	359.86	7,200.0	5,099.3	1,489.5	5,269.8	0.00	0.00	0.00
13,000.0	90.00	359.86	7,200.0	5,199.3	1,489.3	5,368.5	0.00	0.00	0.00
13,100.0	90.00	359.86	7,200.0	5,299.3	1,489.0	5,467.2	0.00	0.00	0.00
13,200.0	90.00	359.86	7,200.0	5,399.3	1,488.8	5,566.0	0.00	0.00	0.00
13,300.0	90.00	359.86	7,200.0	5,499.3	1,488.5	5,664.7	0.00	0.00	0.00
13,400.0	90.00	359.86	7,200.0	5,599.3	1,488.3	5,763.4	0.00	0.00	0.00
13,500.0	90.00	359.86	7,200.0	5,699.3	1,488.0	5,862.1	0.00	0.00	0.00
13,600.0	90.00	359.86	7,200.0	5,799.3	1,487.8	5,960.9	0.00	0.00	0.00
13,700.0	90.00	359.86	7,200.0	5,899.3	1,487.5	6,059.6	0.00	0.00	0.00
13,800.0	90.00	359.86	7,200.0	5,999.3	1,487.3	6,158.3	0.00	0.00	0.00
13,900.0	90.00	359.86	7,200.0	6,099.3	1,487.1	6,257.0	0.00	0.00	0.00
14,000.0	90.00	359.86	7,200.0	6,199.3	1,486.8	6,355.7	0.00	0.00	0.00
14,100.0	90.00	359.86	7,200.0	6,299.3	1,486.6	6,454.5	0.00	0.00	0.00
14,200.0	90.00	359.86	7,200.0	6,399.3	1,486.3	6,553.2	0.00	0.00	0.00
14,300.0	90.00	359.86	7,200.0	6,499.3	1,486.1	6,651.9	0.00	0.00	0.00
14,400.0	90.00	359.86	7,200.0	6,599.3	1,485.8	6,750.6	0.00	0.00	0.00
14,500.0	90.00	359.86	7,200.0	6,699.3	1,485.6	6,849.4	0.00	0.00	0.00
14,600.0	90.00	359.86	7,200.0	6,799.3	1,485.3	6,948.1	0.00	0.00	0.00
14,700.0	90.00	359.86	7,200.0	6,899.3	1,485.1	7,046.8	0.00	0.00	0.00
14,800.0	90.00	359.86	7,200.0	6,999.3	1,484.9	7,145.5	0.00	0.00	0.00
14,900.0	90.00	359.86	7,200.0	7,099.3	1,484.6	7,244.3	0.00	0.00	0.00
15,000.0	90.00	359.86	7,200.0	7,199.3	1,484.4	7,343.0	0.00	0.00	0.00
15,100.0	90.00	359.86	7,200.0	7,299.3	1,484.1	7,441.7	0.00	0.00	0.00

<b>Database:</b>	Landmark	<b>Local Co-ordinate Reference:</b>	Well SRC Evans D-26-23-14CHZ
<b>Company:</b>	Synergy Resources	<b>TVD Reference:</b>	WELL @ 4769.0ft (RKB - 15')
<b>Project:</b>	SEC.26-T5N-R66W	<b>MD Reference:</b>	WELL @ 4769.0ft (RKB - 15')
<b>Site:</b>	SRC Evans East Pad Sec.26-T5N-R66W	<b>North Reference:</b>	True
<b>Well:</b>	SRC Evans D-26-23-14CHZ	<b>Survey Calculation Method:</b>	Minimum Curvature
<b>Wellbore:</b>	Wellbore #1		
<b>Design:</b>	Plan #1 (10-27-14)		

Planned Survey										
Measured Depth (ft)	Inclination (°)	Azimuth (°)	Vertical Depth (ft)	+N/-S (ft)	+E/-W (ft)	Vertical Section (ft)	Dogleg Rate (°/100ft)	Build Rate (°/100ft)	Turn Rate (°/100ft)	
15,200.0	90.00	359.86	7,200.0	7,399.3	1,483.9	7,540.4	0.00	0.00	0.00	
15,300.0	90.00	359.86	7,200.0	7,499.3	1,483.6	7,639.2	0.00	0.00	0.00	
15,400.0	90.00	359.86	7,200.0	7,599.3	1,483.4	7,737.9	0.00	0.00	0.00	
15,500.0	90.00	359.86	7,200.0	7,699.3	1,483.1	7,836.6	0.00	0.00	0.00	
15,600.0	90.00	359.86	7,200.0	7,799.3	1,482.9	7,935.3	0.00	0.00	0.00	
15,700.0	90.00	359.86	7,200.0	7,899.3	1,482.7	8,034.0	0.00	0.00	0.00	
15,800.0	90.00	359.86	7,200.0	7,999.3	1,482.4	8,132.8	0.00	0.00	0.00	
15,900.0	90.00	359.86	7,200.0	8,099.3	1,482.2	8,231.5	0.00	0.00	0.00	
16,000.0	90.00	359.86	7,200.0	8,199.3	1,481.9	8,330.2	0.00	0.00	0.00	
16,100.0	90.00	359.86	7,200.0	8,299.3	1,481.7	8,428.9	0.00	0.00	0.00	
16,200.0	90.00	359.86	7,200.0	8,399.3	1,481.4	8,527.7	0.00	0.00	0.00	
16,300.0	90.00	359.86	7,200.0	8,499.3	1,481.2	8,626.4	0.00	0.00	0.00	
16,400.0	90.00	359.86	7,200.0	8,599.3	1,480.9	8,725.1	0.00	0.00	0.00	
16,500.0	90.00	359.86	7,200.0	8,699.3	1,480.7	8,823.8	0.00	0.00	0.00	
16,600.0	90.00	359.86	7,200.0	8,799.3	1,480.5	8,922.6	0.00	0.00	0.00	
16,700.0	90.00	359.86	7,200.0	8,899.3	1,480.2	9,021.3	0.00	0.00	0.00	
16,800.0	90.00	359.86	7,200.0	8,999.3	1,480.0	9,120.0	0.00	0.00	0.00	
16,900.0	90.00	359.86	7,200.0	9,099.3	1,479.7	9,218.7	0.00	0.00	0.00	
17,000.0	90.00	359.86	7,200.0	9,199.3	1,479.5	9,317.5	0.00	0.00	0.00	
17,100.0	90.00	359.86	7,200.0	9,299.3	1,479.2	9,416.2	0.00	0.00	0.00	
17,114.8	90.00	359.86	7,200.0	9,314.0	1,479.2	9,430.8	0.00	0.00	0.00	
<b>BHL 2166'FSL, 626'FEL, SEC.14</b>										
17,114.9	90.00	359.86	7,200.0	9,314.2	1,479.2	9,430.9	0.00	0.00	0.00	
<b>TD at 17114.9</b>										

Targets										
Target Name	Dip Angle (°)	Dip Dir. (°)	TVD (ft)	+N/-S (ft)	+E/-W (ft)	Northing (ft)	Easting (ft)	Latitude	Longitude	
- hit/miss target										
- Shape										
BHL 2166'FSL, 626'FI	0.00	0.00	7,200.0	9,314.0	1,480.1	1,388,759.05	3,212,450.67	40.398037	-104.737202	
- plan misses target center by 0.9ft at 17114.8ft MD (7200.0 TVD, 9314.0 N, 1479.2 E)										
- Point										
SHL 1912'FNL, 2130'I	0.00	0.00	1.0	0.0	0.0	1,379,433.12	3,211,050.24	40.372471	-104.742516	
- plan hits target center										
- Point										

Casing Points					
Measured Depth (ft)	Vertical Depth (ft)	Name	Casing Diameter (")	Hole Diameter (")	
7,825.7	7,200.0	7"	7	7-1/2	

<b>Database:</b>	Landmark	<b>Local Co-ordinate Reference:</b>	Well SRC Evans D-26-23-14CHZ
<b>Company:</b>	Synergy Resources	<b>TVD Reference:</b>	WELL @ 4769.0ft (RKB - 15')
<b>Project:</b>	SEC.26-T5N-R66W	<b>MD Reference:</b>	WELL @ 4769.0ft (RKB - 15')
<b>Site:</b>	SRC Evans East Pad Sec.26-T5N-R66W	<b>North Reference:</b>	True
<b>Well:</b>	SRC Evans D-26-23-14CHZ	<b>Survey Calculation Method:</b>	Minimum Curvature
<b>Wellbore:</b>	Wellbore #1		
<b>Design:</b>	Plan #1 (10-27-14)		

Plan Annotations				
Measured Depth (ft)	Vertical Depth (ft)	Local Coordinates		Comment
		+N/-S (ft)	+E/-W (ft)	
600.0	600.0	0.0	0.0	KOP - Start Build 2.00
1,363.2	1,354.2	-46.8	89.6	Start 5249.6 hold at 1363.2 MD
6,612.8	6,418.6	-686.3	1,314.8	Start DLS 8.00 TFO -116.86
7,825.7	7,200.0	25.0	1,501.9	Start 9289.2 hold at 7825.7 MD
17,114.9	7,200.0	9,314.2	1,479.2	TD at 17114.9





## **Synergy Resources**

**SEC.26-T5N-R66W**

**SRC Evans East Pad Sec.26-T5N-R66W**

**SRC Evans D-26-23-14CHZ**

**Wellbore #1**

**Plan #1 (10-27-14)**

## **Anticollision Report**

**30 October, 2014**



<b>Company:</b>	Synergy Resources	<b>Local Co-ordinate Reference:</b>	Well SRC Evans D-26-23-14CHZ
<b>Project:</b>	SEC.26-T5N-R66W	<b>TVD Reference:</b>	WELL @ 4769.0ft (RKB - 15')
<b>Reference Site:</b>	SRC Evans East Pad Sec.26-T5N-R66W	<b>MD Reference:</b>	WELL @ 4769.0ft (RKB - 15')
<b>Site Error:</b>	0.0ft	<b>North Reference:</b>	True
<b>Reference Well:</b>	SRC Evans D-26-23-14CHZ	<b>Survey Calculation Method:</b>	Minimum Curvature
<b>Well Error:</b>	0.0ft	<b>Output errors are at</b>	2.00 sigma
<b>Reference Wellbore</b>	Wellbore #1	<b>Database:</b>	Landmark
<b>Reference Design:</b>	Plan #1 (10-27-14)	<b>Offset TVD Reference:</b>	Offset Datum

<b>Offset Design</b> Existing Wells Sec.26-T5N-R66W - Bierig 1-26B (Exist) - Wellbore #1 - Wellbore #1												<b>Offset Site Error:</b>	0.0 ft
Survey Program: 7833-UNKNOWN												<b>Offset Well Error:</b>	0.0 ft
Reference	Offset	Semi Major Axis		Distance									
Measured Depth (ft)	Vertical Depth (ft)	Measured Depth (ft)	Vertical Depth (ft)	Reference (ft)	Offset (ft)	Highside Toolface (°)	Offset Wellbore Centre +N/-S (ft)	+E/-W (ft)	Between Centres (ft)	Between Ellipses (ft)	Minimum Separation (ft)	Separation Factor	Warning
8,900.0	7,200.0	7,206.0	7,206.0	37.7	144.1	-90.00	1,398.6	1,444.9	304.2	128.0	176.26	1.726	
9,000.0	7,200.0	7,206.0	7,206.0	38.9	144.1	-90.00	1,398.6	1,444.9	206.6	28.8	177.72	1.162	Level 2
9,100.0	7,200.0	7,206.0	7,206.0	40.1	144.1	-90.00	1,398.6	1,444.9	113.0	-66.2	179.23	0.631	Level 1
9,199.5	7,200.0	7,206.0	7,206.0	41.5	144.1	-90.00	1,398.6	1,444.9	53.6	-127.1	180.76	0.297	Level 1, CC, SF
9,200.0	7,200.0	7,206.0	7,206.0	41.5	144.1	-90.00	1,398.6	1,444.9	53.6	-127.1	180.77	0.297	Level 1, ES
9,300.0	7,200.0	7,206.0	7,206.0	42.8	144.1	-90.00	1,398.6	1,444.9	113.9	-68.4	182.35	0.625	Level 1
9,400.0	7,200.0	7,206.0	7,206.0	44.3	144.1	-90.00	1,398.6	1,444.9	207.6	23.6	183.96	1.128	Level 2
9,500.0	7,200.0	7,206.0	7,206.0	45.8	144.1	-90.00	1,398.6	1,444.9	305.3	119.7	185.60	1.645	
9,600.0	7,200.0	7,206.0	7,206.0	47.3	144.1	-90.00	1,398.6	1,444.9	404.1	216.8	187.25	2.158	
9,700.0	7,200.0	7,206.0	7,206.0	48.8	144.1	-90.00	1,398.6	1,444.9	503.4	314.5	188.94	2.664	
9,800.0	7,200.0	7,206.0	7,206.0	50.4	144.1	-90.00	1,398.6	1,444.9	602.9	412.3	190.63	3.163	
9,900.0	7,200.0	7,206.0	7,206.0	52.0	144.1	-90.00	1,398.6	1,444.9	702.6	510.2	192.35	3.653	

<b>Company:</b>	Synergy Resources	<b>Local Co-ordinate Reference:</b>	Well SRC Evans D-26-23-14CHZ
<b>Project:</b>	SEC.26-T5N-R66W	<b>TVD Reference:</b>	WELL @ 4769.0ft (RKB - 15')
<b>Reference Site:</b>	SRC Evans East Pad Sec.26-T5N-R66W	<b>MD Reference:</b>	WELL @ 4769.0ft (RKB - 15')
<b>Site Error:</b>	0.0ft	<b>North Reference:</b>	True
<b>Reference Well:</b>	SRC Evans D-26-23-14CHZ	<b>Survey Calculation Method:</b>	Minimum Curvature
<b>Well Error:</b>	0.0ft	<b>Output errors are at</b>	2.00 sigma
<b>Reference Wellbore</b>	Wellbore #1	<b>Database:</b>	Landmark
<b>Reference Design:</b>	Plan #1 (10-27-14)	<b>Offset TVD Reference:</b>	Offset Datum

<b>Offset Design</b> Existing Wells Sec.26-T5N-R66W - Mantel J 23-16 (P&A) - Wellbore #1 - Wellbore #1												<b>Offset Site Error:</b>	0.0 ft
Survey Program: 7460-UNKNOWN												<b>Offset Well Error:</b>	0.0 ft
Reference	Offset	Semi Major Axis		Distance									
Measured Depth (ft)	Vertical Depth (ft)	Measured Depth (ft)	Vertical Depth (ft)	Reference (ft)	Offset (ft)	Highside Toolface (°)	Offset Wellbore Centre +N/-S (ft)	+E/-W (ft)	Between Centres (ft)	Between Ellipses (ft)	Minimum Separation (ft)	Separation Factor	Warning
9,600.0	7,200.0	7,240.0	7,240.0	47.3	144.8	-90.00	2,489.7	1,252.6	732.6	544.7	187.93	3.898	
9,700.0	7,200.0	7,240.0	7,240.0	48.8	144.8	-90.00	2,489.7	1,252.6	639.1	449.5	189.62	3.371	
9,800.0	7,200.0	7,240.0	7,240.0	50.4	144.8	-90.00	2,489.7	1,252.6	548.0	356.7	191.31	2.864	
9,900.0	7,200.0	7,240.0	7,240.0	52.0	144.8	-90.00	2,489.7	1,252.6	460.5	267.5	193.03	2.386	
10,000.0	7,200.0	7,240.0	7,240.0	53.6	144.8	-90.00	2,489.7	1,252.6	379.3	184.6	194.76	1.948	
10,100.0	7,200.0	7,240.0	7,240.0	55.3	144.8	-90.00	2,489.7	1,252.6	309.3	112.8	196.51	1.574	
10,200.0	7,200.0	7,240.0	7,240.0	56.9	144.8	-90.00	2,489.7	1,252.6	259.7	61.5	198.26	1.310	Level 3
10,291.0	7,200.0	7,240.0	7,240.0	58.4	144.8	-90.00	2,489.7	1,252.6	243.3	43.4	199.87	1.217	Level 2, CC, ES
10,300.0	7,200.0	7,240.0	7,240.0	58.6	144.8	-90.00	2,489.7	1,252.6	243.4	43.4	200.03	1.217	Level 2, SF
10,400.0	7,200.0	7,240.0	7,240.0	60.3	144.8	-90.00	2,489.7	1,252.6	266.5	64.7	201.81	1.321	Level 3
10,500.0	7,200.0	7,240.0	7,240.0	62.0	144.8	-90.00	2,489.7	1,252.6	320.7	117.1	203.59	1.575	
10,600.0	7,200.0	7,240.0	7,240.0	63.7	144.8	-90.00	2,489.7	1,252.6	393.2	187.8	205.39	1.915	
10,700.0	7,200.0	7,240.0	7,240.0	65.4	144.8	-90.00	2,489.7	1,252.6	475.8	268.7	207.19	2.297	
10,800.0	7,200.0	7,240.0	7,240.0	67.2	144.8	-90.00	2,489.7	1,252.6	564.1	355.1	209.00	2.699	
10,900.0	7,200.0	7,240.0	7,240.0	68.9	144.8	-90.00	2,489.7	1,252.6	655.8	444.9	210.81	3.111	
11,000.0	7,200.0	7,240.0	7,240.0	70.7	144.8	-90.00	2,489.7	1,252.6	749.5	536.9	212.64	3.525	

<b>Company:</b>	Synergy Resources	<b>Local Co-ordinate Reference:</b>	Well SRC Evans D-26-23-14CHZ
<b>Project:</b>	SEC.26-T5N-R66W	<b>TVD Reference:</b>	WELL @ 4769.0ft (RKB - 15')
<b>Reference Site:</b>	SRC Evans East Pad Sec.26-T5N-R66W	<b>MD Reference:</b>	WELL @ 4769.0ft (RKB - 15')
<b>Site Error:</b>	0.0ft	<b>North Reference:</b>	True
<b>Reference Well:</b>	SRC Evans D-26-23-14CHZ	<b>Survey Calculation Method:</b>	Minimum Curvature
<b>Well Error:</b>	0.0ft	<b>Output errors are at</b>	2.00 sigma
<b>Reference Wellbore</b>	Wellbore #1	<b>Database:</b>	Landmark
<b>Reference Design:</b>	Plan #1 (10-27-14)	<b>Offset TVD Reference:</b>	Offset Datum

Offset Design Existing Wells Sec.26-T5N-R66W - Mantel J23-9 (P&A) - Wellbore #1 - Wellbore #1												Offset Site Error:	0.0 ft
Survey Program: 7435-UNKNOWN												Offset Well Error:	0.0 ft
Reference		Offset		Semi Major Axis			Distance						Warning
Measured Depth (ft)	Vertical Depth (ft)	Measured Depth (ft)	Vertical Depth (ft)	Reference (ft)	Offset (ft)	Highside Toolface (°)	Offset Wellbore Centre +N/-S (ft)	+E/-W (ft)	Between Centres (ft)	Between Ellipses (ft)	Minimum Separation (ft)	Separation Factor	
10,800.0	7,200.0	7,253.0	7,253.0	67.2	145.1	-90.00	3,743.0	1,255.3	781.2	572.0	209.26	3.733	
10,900.0	7,200.0	7,253.0	7,253.0	68.9	145.1	-90.00	3,743.0	1,255.3	686.6	475.6	211.07	3.253	
11,000.0	7,200.0	7,253.0	7,253.0	70.7	145.1	-90.00	3,743.0	1,255.3	593.8	380.9	212.90	2.789	
11,100.0	7,200.0	7,253.0	7,253.0	72.4	145.1	-90.00	3,743.0	1,255.3	503.7	289.0	214.72	2.346	
11,200.0	7,200.0	7,253.0	7,253.0	74.2	145.1	-90.00	3,743.0	1,255.3	418.2	201.7	216.55	1.931	
11,300.0	7,200.0	7,253.0	7,253.0	76.0	145.1	-90.00	3,743.0	1,255.3	340.7	122.3	218.39	1.560	
11,400.0	7,200.0	7,253.0	7,253.0	77.8	145.1	-90.00	3,743.0	1,255.3	277.9	57.6	220.23	1.262	Level 3
11,500.0	7,200.0	7,253.0	7,253.0	79.6	145.1	-90.00	3,743.0	1,255.3	241.6	19.5	222.08	1.088	Level 2
11,544.3	7,200.0	7,253.0	7,253.0	80.4	145.1	-90.00	3,743.0	1,255.3	237.5	14.6	222.89	1.065	Level 2, CC, ES, SF
11,600.0	7,200.0	7,253.0	7,253.0	81.4	145.1	-90.00	3,743.0	1,255.3	243.9	20.0	223.92	1.089	Level 2
11,700.0	7,200.0	7,253.0	7,253.0	83.2	145.1	-90.00	3,743.0	1,255.3	284.0	58.2	225.78	1.258	Level 3
11,800.0	7,200.0	7,253.0	7,253.0	85.0	145.1	-90.00	3,743.0	1,255.3	349.0	121.4	227.63	1.533	
11,900.0	7,200.0	7,253.0	7,253.0	86.8	145.1	-90.00	3,743.0	1,255.3	427.7	198.2	229.49	1.864	
12,000.0	7,200.0	7,253.0	7,253.0	88.6	145.1	-90.00	3,743.0	1,255.3	513.9	282.6	231.35	2.221	
12,100.0	7,200.0	7,253.0	7,253.0	90.4	145.1	-90.00	3,743.0	1,255.3	604.4	371.1	233.21	2.591	
12,200.0	7,200.0	7,253.0	7,253.0	92.3	145.1	-90.00	3,743.0	1,255.3	697.4	462.3	235.08	2.967	
12,300.0	7,200.0	7,253.0	7,253.0	94.1	145.1	-90.00	3,743.0	1,255.3	792.2	555.2	236.95	3.343	

<b>Company:</b>	Synergy Resources	<b>Local Co-ordinate Reference:</b>	Well SRC Evans D-26-23-14CHZ
<b>Project:</b>	SEC.26-T5N-R66W	<b>TVD Reference:</b>	WELL @ 4769.0ft (RKB - 15')
<b>Reference Site:</b>	SRC Evans East Pad Sec.26-T5N-R66W	<b>MD Reference:</b>	WELL @ 4769.0ft (RKB - 15')
<b>Site Error:</b>	0.0ft	<b>North Reference:</b>	True
<b>Reference Well:</b>	SRC Evans D-26-23-14CHZ	<b>Survey Calculation Method:</b>	Minimum Curvature
<b>Well Error:</b>	0.0ft	<b>Output errors are at</b>	2.00 sigma
<b>Reference Wellbore</b>	Wellbore #1	<b>Database:</b>	Landmark
<b>Reference Design:</b>	Plan #1 (10-27-14)	<b>Offset TVD Reference:</b>	Offset Datum

Offset Design													Offset Site Error:	0.0 ft
SRC Evans Center Pad Sec.26-T5N-R66W - SRC Evans 33-26-23-14NHZ - Wellbore #1 - Plan #1 (10-													Offset Well Error:	0.0 ft
Survey Program: 0-MWD														
Reference		Offset		Semi Major Axis			Distance							
Measured Depth (ft)	Vertical Depth (ft)	Measured Depth (ft)	Vertical Depth (ft)	Reference (ft)	Offset (ft)	Highside Toolface (°)	Offset Wellbore Centre +N/-S (ft)	+E/-W (ft)	Between Centres (ft)	Between Ellipses (ft)	Minimum Separation (ft)	Separation Factor	Warning	
0.0	0.0	0.0	0.0	0.0	0.0	-87.28	21.9	-460.0	460.6					
100.0	100.0	95.0	95.0	0.1	0.1	-87.28	21.9	-460.0	460.5	460.3	0.22	2,101.443		
200.0	200.0	195.0	195.0	0.3	0.3	-87.28	21.9	-460.0	460.5	459.9	0.66	694.576		
300.0	300.0	295.0	295.0	0.6	0.6	-87.28	21.9	-460.0	460.5	459.4	1.11	413.939		
400.0	400.0	395.0	395.0	0.8	0.8	-87.28	21.9	-460.0	460.5	459.0	1.56	294.820		
500.0	500.0	495.0	495.0	1.0	1.0	-87.28	21.9	-460.0	460.5	458.5	2.01	228.939		
600.0	600.0	595.0	595.0	1.2	1.2	-87.28	21.9	-460.0	460.5	458.1	2.46	187.123 CC, ES		
700.0	700.0	695.0	695.0	1.4	1.4	155.24	21.9	-460.0	462.1	459.2	2.89	159.802		
800.0	799.8	794.8	794.8	1.6	1.7	155.47	21.9	-460.0	466.9	463.6	3.31	141.006		
900.0	899.5	894.5	894.5	1.9	1.9	155.84	21.9	-460.0	474.8	471.1	3.74	127.005		
1,000.0	998.7	993.7	993.7	2.1	2.1	156.33	21.9	-460.0	486.0	481.8	4.17	116.432		
1,100.0	1,097.5	1,092.5	1,092.5	2.4	2.3	156.94	21.9	-460.0	500.4	495.8	4.62	108.373		
1,200.0	1,195.6	1,190.6	1,190.6	2.8	2.6	157.63	21.9	-460.0	518.0	513.0	5.07	102.208		
1,300.0	1,293.1	1,301.9	1,301.9	3.2	2.8	158.37	20.5	-458.9	537.8	532.3	5.53	97.302		
1,363.2	1,354.2	1,373.6	1,373.5	3.4	2.9	158.74	17.8	-456.7	550.6	544.8	5.81	94.785		
1,400.0	1,389.7	1,415.5	1,415.3	3.6	3.0	158.95	15.6	-454.8	557.9	551.9	5.98	93.226		
1,500.0	1,486.2	1,530.5	1,529.8	4.1	3.2	159.30	7.2	-447.8	575.8	569.3	6.49	88.781		
1,600.0	1,582.7	1,646.7	1,644.9	4.6	3.5	159.31	-4.8	-437.7	590.7	583.7	7.02	84.104		
1,700.0	1,679.1	1,763.8	1,760.2	5.2	3.8	159.01	-20.6	-424.6	602.7	595.1	7.61	79.216		
1,800.0	1,775.6	1,871.3	1,865.3	5.7	4.2	158.51	-37.8	-410.2	612.3	604.1	8.22	74.503		
1,900.0	1,872.1	1,970.7	1,962.4	6.2	4.5	158.04	-54.1	-396.6	621.5	612.7	8.84	70.302		
2,000.0	1,968.5	2,070.2	2,059.6	6.8	4.9	157.57	-70.4	-382.9	630.9	621.4	9.49	66.510		
2,100.0	2,065.0	2,169.6	2,156.7	7.3	5.3	157.13	-86.7	-369.3	640.2	630.1	10.15	63.060		
2,200.0	2,161.5	2,269.1	2,253.9	7.9	5.7	156.69	-103.0	-355.7	649.6	638.8	10.84	59.940		
2,300.0	2,258.0	2,368.5	2,351.0	8.4	6.1	156.27	-119.3	-342.1	659.0	647.5	11.54	57.118		
2,400.0	2,354.4	2,467.9	2,448.2	9.0	6.5	155.86	-135.6	-328.5	668.5	656.2	12.25	54.560		
2,500.0	2,450.9	2,567.4	2,545.3	9.5	6.9	155.46	-151.9	-314.9	678.0	665.0	12.98	52.235		
2,600.0	2,547.4	2,666.8	2,642.5	10.1	7.3	155.07	-168.2	-301.3	687.5	673.8	13.72	50.119		
2,700.0	2,643.8	2,766.3	2,739.6	10.7	7.8	154.69	-184.5	-287.7	697.1	682.6	14.47	48.186		
2,800.0	2,740.3	2,865.7	2,836.8	11.2	8.2	154.32	-200.7	-274.1	706.7	691.4	15.22	46.418		
2,900.0	2,836.8	2,965.1	2,933.9	11.8	8.7	153.96	-217.0	-260.5	716.3	700.3	15.99	44.795		
3,000.0	2,933.3	3,064.6	3,031.1	12.4	9.1	153.62	-233.3	-246.9	725.9	709.2	16.76	43.301		
3,100.0	3,029.7	3,164.0	3,128.2	12.9	9.6	153.28	-249.6	-233.3	735.6	718.0	17.55	41.924		
3,200.0	3,126.2	3,263.4	3,225.3	13.5	10.0	152.95	-265.9	-219.7	745.3	726.9	18.33	40.651		
3,300.0	3,222.7	3,362.9	3,322.5	14.1	10.5	152.62	-282.2	-206.0	755.0	735.9	19.13	39.470		
3,400.0	3,319.1	3,462.3	3,419.6	14.6	10.9	152.31	-298.5	-192.4	764.7	744.8	19.93	38.374		
3,500.0	3,415.6	3,561.8	3,516.8	15.2	11.4	152.00	-314.8	-178.8	774.5	753.8	20.73	37.354		
3,600.0	3,512.1	3,661.2	3,613.9	15.8	11.8	151.71	-331.1	-165.2	784.3	762.7	21.54	36.402		
3,700.0	3,608.6	3,760.6	3,711.1	16.3	12.3	151.42	-347.4	-151.6	794.1	771.7	22.36	35.513 SF		

<b>Company:</b>	Synergy Resources	<b>Local Co-ordinate Reference:</b>	Well SRC Evans D-26-23-14CHZ
<b>Project:</b>	SEC.26-T5N-R66W	<b>TVD Reference:</b>	WELL @ 4769.0ft (RKB - 15')
<b>Reference Site:</b>	SRC Evans East Pad Sec.26-T5N-R66W	<b>MD Reference:</b>	WELL @ 4769.0ft (RKB - 15')
<b>Site Error:</b>	0.0ft	<b>North Reference:</b>	True
<b>Reference Well:</b>	SRC Evans D-26-23-14CHZ	<b>Survey Calculation Method:</b>	Minimum Curvature
<b>Well Error:</b>	0.0ft	<b>Output errors are at</b>	2.00 sigma
<b>Reference Wellbore</b>	Wellbore #1	<b>Database:</b>	Landmark
<b>Reference Design:</b>	Plan #1 (10-27-14)	<b>Offset TVD Reference:</b>	Offset Datum

Offset Design													Offset Site Error:	0.0 ft
Survey Program: 0-MWD													Offset Well Error:	0.0 ft
Reference		Offset		Semi Major Axis			Distance							Warning
Measured Depth (ft)	Vertical Depth (ft)	Measured Depth (ft)	Vertical Depth (ft)	Reference (ft)	Offset (ft)	Highside Toolface (°)	Offset Wellbore Centre +N/-S (ft)	+E/-W (ft)	Between Centres (ft)	Between Ellipses (ft)	Minimum Separation (ft)	Separation Factor		
0.0	0.0	0.0	0.0	0.0	0.0	-92.90	-23.3	-459.7	460.4					
100.0	100.0	94.0	94.0	0.1	0.1	-92.90	-23.3	-459.7	460.3	460.1	0.22	2,111.311		
200.0	200.0	194.0	194.0	0.3	0.3	-92.90	-23.3	-459.7	460.3	459.7	0.66	696.627		
300.0	300.0	294.0	294.0	0.6	0.5	-92.90	-23.3	-459.7	460.3	459.2	1.11	414.592		
400.0	400.0	394.0	394.0	0.8	0.8	-92.90	-23.3	-459.7	460.3	458.8	1.56	295.113		
500.0	500.0	494.0	494.0	1.0	1.0	-92.90	-23.3	-459.7	460.3	458.3	2.01	229.092		
600.0	600.0	594.0	594.0	1.2	1.2	-92.90	-23.3	-459.7	460.3	457.9	2.46	187.211 CC, ES		
700.0	700.0	694.0	694.0	1.4	1.4	149.63	-23.3	-459.7	461.8	459.0	2.89	159.832		
800.0	799.8	793.8	793.8	1.6	1.7	149.91	-23.3	-459.7	466.4	463.1	3.31	140.935		
900.0	899.5	900.0	900.0	1.9	1.9	150.21	-24.9	-459.0	473.3	469.6	3.72	127.079		
1,000.0	998.7	1,006.7	1,006.5	2.1	2.1	150.27	-30.0	-456.6	481.8	477.6	4.13	116.600		
1,100.0	1,097.5	1,113.4	1,112.7	2.4	2.3	150.10	-38.8	-452.4	491.8	487.2	4.57	107.506		
1,200.0	1,195.6	1,218.8	1,217.4	2.8	2.5	149.72	-50.9	-446.7	503.4	498.3	5.06	99.447		
1,300.0	1,293.1	1,317.8	1,315.4	3.2	2.8	149.41	-63.5	-440.7	517.5	511.9	5.58	92.666		
1,363.2	1,354.2	1,380.2	1,377.1	3.4	3.0	149.29	-71.4	-436.9	527.9	522.0	5.94	88.934		
1,400.0	1,389.7	1,416.4	1,413.0	3.6	3.1	149.31	-76.0	-434.8	534.3	528.2	6.15	86.846		
1,500.0	1,486.2	1,514.9	1,510.4	4.1	3.4	149.37	-88.5	-428.8	551.8	545.0	6.76	81.632		
1,600.0	1,582.7	1,613.3	1,607.9	4.6	3.7	149.41	-101.0	-422.9	569.2	561.8	7.39	77.062		
1,700.0	1,679.1	1,711.8	1,705.4	5.2	4.0	149.46	-113.4	-417.0	586.6	578.6	8.03	73.078		
1,800.0	1,775.6	1,810.3	1,802.9	5.7	4.3	149.50	-125.9	-411.1	604.1	595.4	8.68	69.583		
1,900.0	1,872.1	1,908.7	1,900.4	6.2	4.6	149.55	-138.4	-405.1	621.5	612.2	9.34	66.512		
2,000.0	1,968.5	2,007.2	1,997.9	6.8	4.9	149.59	-150.9	-399.2	638.9	628.9	10.01	63.800		
2,100.0	2,065.0	2,105.7	2,095.4	7.3	5.3	149.62	-163.4	-393.3	656.4	645.7	10.69	61.396		
2,200.0	2,161.5	2,204.1	2,192.9	7.9	5.6	149.66	-175.9	-387.3	673.8	662.5	11.37	59.252		
2,300.0	2,258.0	2,302.6	2,290.4	8.4	5.9	149.69	-188.4	-381.4	691.3	679.2	12.06	57.331		
2,400.0	2,354.4	2,401.1	2,387.9	9.0	6.3	149.72	-200.9	-375.5	708.7	696.0	12.75	55.603		
2,500.0	2,450.9	2,499.5	2,485.3	9.5	6.6	149.75	-213.4	-369.5	726.1	712.7	13.44	54.040		
2,600.0	2,547.4	2,598.0	2,582.8	10.1	6.9	149.78	-225.9	-363.6	743.6	729.4	14.13	52.622		
2,700.0	2,643.8	2,696.5	2,680.3	10.7	7.3	149.81	-238.4	-357.7	761.0	746.2	14.83	51.329		
2,800.0	2,740.3	2,794.9	2,777.8	11.2	7.6	149.83	-250.9	-351.8	778.5	762.9	15.52	50.147		
2,900.0	2,836.8	2,893.4	2,875.3	11.8	8.0	149.86	-263.4	-345.8	795.9	779.7	16.22	49.062 SF		

<b>Company:</b>	Synergy Resources	<b>Local Co-ordinate Reference:</b>	Well SRC Evans D-26-23-14CHZ
<b>Project:</b>	SEC.26-T5N-R66W	<b>TVD Reference:</b>	WELL @ 4769.0ft (RKB - 15')
<b>Reference Site:</b>	SRC Evans East Pad Sec.26-T5N-R66W	<b>MD Reference:</b>	WELL @ 4769.0ft (RKB - 15')
<b>Site Error:</b>	0.0ft	<b>North Reference:</b>	True
<b>Reference Well:</b>	SRC Evans D-26-23-14CHZ	<b>Survey Calculation Method:</b>	Minimum Curvature
<b>Well Error:</b>	0.0ft	<b>Output errors are at</b>	2.00 sigma
<b>Reference Wellbore</b>	Wellbore #1	<b>Database:</b>	Landmark
<b>Reference Design:</b>	Plan #1 (10-27-14)	<b>Offset TVD Reference:</b>	Offset Datum

Offset Design													Offset Site Error:	0.0 ft
Survey Program: 0-MWD													Offset Well Error:	0.0 ft
Reference		Offset		Semi Major Axis			Distance							Warning
Measured Depth (ft)	Vertical Depth (ft)	Measured Depth (ft)	Vertical Depth (ft)	Reference (ft)	Offset (ft)	Highside Toolface (°)	Offset Wellbore Centre +N/-S (ft)	+E/-W (ft)	Between Centres (ft)	Between Ellipses (ft)	Minimum Separation (ft)	Separation Factor		
0.0	0.0	0.0	0.0	0.0	0.0	179.82	-90.0	0.3	90.0					
100.0	100.0	97.0	97.0	0.1	0.1	179.82	-90.0	0.3	90.0	89.8	0.22	406.454		
200.0	200.0	197.0	197.0	0.3	0.3	179.82	-90.0	0.3	90.0	89.3	0.67	134.804		
300.0	300.0	297.0	297.0	0.6	0.6	179.82	-90.0	0.3	90.0	88.9	1.12	80.557		
400.0	400.0	397.0	397.0	0.8	0.8	179.82	-90.0	0.3	90.0	88.4	1.57	57.442		
500.0	500.0	497.0	497.0	1.0	1.0	179.82	-90.0	0.3	90.0	88.0	2.02	44.634		
600.0	600.0	597.0	597.0	1.2	1.2	179.82	-90.0	0.3	90.0	87.5	2.47	36.497		
700.0	700.0	697.0	697.0	1.4	1.5	63.27	-90.0	0.3	89.2	86.3	2.90	30.792		
800.0	799.8	796.8	796.8	1.6	1.7	66.38	-90.0	0.3	87.0	83.6	3.32	26.195		
900.0	899.5	896.5	896.5	1.9	1.9	71.89	-90.0	0.3	83.8	80.1	3.76	22.281		
1,000.0	998.7	995.7	995.7	2.1	2.1	80.12	-90.0	0.3	80.9	76.6	4.24	19.082		
1,060.1	1,058.1	1,054.2	1,054.2	2.3	2.2	86.04	-90.4	0.5	80.1	75.6	4.53	17.676 CC, ES		
1,100.0	1,097.5	1,093.1	1,093.1	2.4	2.3	90.08	-91.3	1.1	80.5	75.7	4.73	17.018		
1,200.0	1,195.6	1,190.7	1,190.6	2.8	2.5	99.95	-95.4	3.5	84.4	79.2	5.24	16.099		
1,300.0	1,293.1	1,288.5	1,288.1	3.2	2.7	108.65	-102.5	7.7	92.6	86.8	5.80	15.959 SF		
1,363.2	1,354.2	1,350.5	1,349.6	3.4	2.8	113.27	-108.4	11.2	99.7	93.6	6.18	16.139		
1,400.0	1,389.7	1,386.6	1,385.5	3.6	2.9	115.62	-112.4	13.5	104.4	98.0	6.41	16.297		
1,500.0	1,486.2	1,485.2	1,483.2	4.1	3.1	120.94	-123.4	20.1	117.8	110.8	7.03	16.755		
1,600.0	1,582.7	1,583.8	1,580.9	4.6	3.4	125.16	-134.4	26.6	132.1	124.4	7.67	17.227		
1,700.0	1,679.1	1,682.3	1,678.7	5.2	3.7	128.54	-145.4	33.1	146.9	138.6	8.30	17.687		
1,800.0	1,775.6	1,780.9	1,776.4	5.7	3.9	131.30	-156.4	39.7	162.1	153.1	8.94	18.121		
1,900.0	1,872.1	1,879.4	1,874.1	6.2	4.2	133.59	-167.4	46.2	177.6	168.0	9.59	18.527		
2,000.0	1,968.5	1,978.0	1,971.8	6.8	4.5	135.51	-178.4	52.7	193.3	183.1	10.23	18.898		
2,100.0	2,065.0	2,076.6	2,069.6	7.3	4.8	137.14	-189.4	59.2	209.3	198.4	10.88	19.239		
2,200.0	2,161.5	2,175.1	2,167.3	7.9	5.1	138.53	-200.4	65.8	225.3	213.8	11.52	19.552		
2,300.0	2,258.0	2,273.7	2,265.0	8.4	5.4	139.74	-211.4	72.3	241.5	229.3	12.17	19.839		
2,400.0	2,354.4	2,372.3	2,362.7	9.0	5.7	140.80	-222.5	78.8	257.8	245.0	12.82	20.103		
2,500.0	2,450.9	2,470.8	2,460.5	9.5	6.0	141.74	-233.5	85.3	274.1	260.7	13.47	20.345		
2,600.0	2,547.4	2,569.4	2,558.2	10.1	6.4	142.57	-244.5	91.9	290.6	276.4	14.13	20.568		
2,700.0	2,643.8	2,667.9	2,655.9	10.7	6.7	143.30	-255.5	98.4	307.0	292.2	14.78	20.774		
2,800.0	2,740.3	2,766.5	2,753.7	11.2	7.0	143.97	-266.5	104.9	323.5	308.1	15.43	20.964		
2,900.0	2,836.8	2,865.1	2,851.4	11.8	7.3	144.57	-277.5	111.4	340.1	324.0	16.09	21.141		
3,000.0	2,933.3	2,963.6	2,949.1	12.4	7.6	145.11	-288.5	118.0	356.7	339.9	16.74	21.304		
3,100.0	3,029.7	3,062.2	3,046.8	12.9	8.0	145.61	-299.5	124.5	373.3	355.9	17.40	21.457		
3,200.0	3,126.2	3,160.7	3,144.6	13.5	8.3	146.06	-310.5	131.0	389.9	371.9	18.05	21.599		
3,300.0	3,222.7	3,259.3	3,242.3	14.1	8.6	146.48	-321.5	137.5	406.6	387.9	18.71	21.732		
3,400.0	3,319.1	3,357.9	3,340.0	14.6	8.9	146.86	-332.5	144.1	423.3	403.9	19.37	21.856		
3,500.0	3,415.6	3,456.4	3,437.7	15.2	9.2	147.22	-343.5	150.6	440.0	419.9	20.02	21.973		
3,600.0	3,512.1	3,555.0	3,535.5	15.8	9.6	147.55	-354.5	157.1	456.7	436.0	20.68	22.083		
3,700.0	3,608.6	3,653.6	3,633.2	16.3	9.9	147.85	-365.6	163.6	473.4	452.0	21.34	22.186		
3,800.0	3,705.0	3,752.1	3,730.9	16.9	10.2	148.14	-376.6	170.2	490.1	468.1	22.00	22.283		
3,900.0	3,801.5	3,850.7	3,828.6	17.5	10.6	148.40	-387.6	176.7	506.9	484.2	22.65	22.375		
4,000.0	3,898.0	3,949.2	3,926.4	18.0	10.9	148.65	-398.6	183.2	523.6	500.3	23.31	22.462		
4,100.0	3,994.5	4,047.8	4,024.1	18.6	11.2	148.88	-409.6	189.8	540.4	516.4	23.97	22.544		
4,200.0	4,090.9	4,146.4	4,121.8	19.2	11.5	149.10	-420.6	196.3	557.2	532.5	24.63	22.622		
4,300.0	4,187.4	4,244.9	4,219.6	19.7	11.9	149.31	-431.6	202.8	573.9	548.7	25.29	22.696		
4,400.0	4,283.9	4,343.5	4,317.3	20.3	12.2	149.51	-442.6	209.3	590.7	564.8	25.95	22.766		
4,500.0	4,380.3	4,442.0	4,415.0	20.9	12.5	149.69	-453.6	215.9	607.5	580.9	26.61	22.833		
4,600.0	4,476.8	4,540.6	4,512.7	21.4	12.9	149.86	-464.6	222.4	624.3	597.1	27.27	22.897		
4,700.0	4,573.3	4,639.2	4,610.5	22.0	13.2	150.03	-475.6	228.9	641.1	613.2	27.93	22.957		
4,800.0	4,669.8	4,737.7	4,708.2	22.6	13.5	150.18	-486.6	235.4	657.9	629.4	28.59	23.015		
4,900.0	4,766.2	4,836.3	4,805.9	23.1	13.8	150.33	-497.6	242.0	674.8	645.5	29.25	23.071		

CC - Min centre to center distance or convergent point, SF - min separation factor, ES - min ellipse separation



<b>Company:</b>	Synergy Resources	<b>Local Co-ordinate Reference:</b>	Well SRC Evans D-26-23-14CHZ
<b>Project:</b>	SEC.26-T5N-R66W	<b>TVD Reference:</b>	WELL @ 4769.0ft (RKB - 15')
<b>Reference Site:</b>	SRC Evans East Pad Sec.26-T5N-R66W	<b>MD Reference:</b>	WELL @ 4769.0ft (RKB - 15')
<b>Site Error:</b>	0.0ft	<b>North Reference:</b>	True
<b>Reference Well:</b>	SRC Evans D-26-23-14CHZ	<b>Survey Calculation Method:</b>	Minimum Curvature
<b>Well Error:</b>	0.0ft	<b>Output errors are at</b>	2.00 sigma
<b>Reference Wellbore</b>	Wellbore #1	<b>Database:</b>	Landmark
<b>Reference Design:</b>	Plan #1 (10-27-14)	<b>Offset TVD Reference:</b>	Offset Datum

<b>Offset Design</b>												<b>Offset Site Error:</b>	0.0 ft
SRC Evans East Pad Sec.26-T5N-R66W - SRC Evans 33-26-23-14CHZ - Wellbore #1 - Plan #1 (10-27												<b>Offset Well Error:</b>	0.0 ft
Survey Program: 0-MWD													
Reference		Offset		Semi Major Axis			Distance						
Measured Depth (ft)	Vertical Depth (ft)	Measured Depth (ft)	Vertical Depth (ft)	Reference (ft)	Offset (ft)	Highside Toolface (°)	Offset Wellbore Centre +N/-S (ft)	+E/-W (ft)	Between Centres (ft)	Between Ellipses (ft)	Minimum Separation (ft)	Separation Factor	Warning
5,000.0	4,862.7	4,934.9	4,903.6	23.7	14.2	150.48	-508.7	248.5	691.6	661.7	29.91	23.124	
5,100.0	4,959.2	5,033.4	5,001.4	24.3	14.5	150.61	-519.7	255.0	708.4	677.8	30.57	23.175	
5,200.0	5,055.6	5,132.0	5,099.1	24.8	14.8	150.74	-530.7	261.5	725.2	694.0	31.23	23.223	
5,300.0	5,152.1	5,230.5	5,196.8	25.4	15.2	150.86	-541.7	268.1	742.1	710.2	31.89	23.270	
5,400.0	5,248.6	5,329.1	5,294.6	26.0	15.5	150.98	-552.7	274.6	758.9	726.3	32.55	23.314	
5,500.0	5,345.1	5,427.7	5,392.3	26.5	15.8	151.09	-563.7	281.1	775.7	742.5	33.21	23.357	
5,600.0	5,441.5	5,526.2	5,490.0	27.1	16.2	151.20	-574.7	287.6	792.6	758.7	33.87	23.399	

<b>Company:</b>	Synergy Resources	<b>Local Co-ordinate Reference:</b>	Well SRC Evans D-26-23-14CHZ
<b>Project:</b>	SEC.26-T5N-R66W	<b>TVD Reference:</b>	WELL @ 4769.0ft (RKB - 15')
<b>Reference Site:</b>	SRC Evans East Pad Sec.26-T5N-R66W	<b>MD Reference:</b>	WELL @ 4769.0ft (RKB - 15')
<b>Site Error:</b>	0.0ft	<b>North Reference:</b>	True
<b>Reference Well:</b>	SRC Evans D-26-23-14CHZ	<b>Survey Calculation Method:</b>	Minimum Curvature
<b>Well Error:</b>	0.0ft	<b>Output errors are at</b>	2.00 sigma
<b>Reference Wellbore</b>	Wellbore #1	<b>Database:</b>	Landmark
<b>Reference Design:</b>	Plan #1 (10-27-14)	<b>Offset TVD Reference:</b>	Offset Datum

Offset Design													Offset Site Error:	0.0 ft
Survey Program: 0-MWD													Offset Well Error:	0.0 ft
Reference		Offset		Semi Major Axis			Distance							Warning
Measured Depth (ft)	Vertical Depth (ft)	Measured Depth (ft)	Vertical Depth (ft)	Reference (ft)	Offset (ft)	Highside Toolface (°)	Offset Wellbore Centre +N/-S (ft)	+E/-W (ft)	Between Centres (ft)	Between Ellipses (ft)	Minimum Separation (ft)	Separation Factor		
0.0	0.0	1.0	1.0	0.0	0.0	0.00	44.8	0.0	44.8	44.8	0.00	N/A		
100.0	100.0	101.0	101.0	0.1	0.1	0.00	44.8	0.0	44.8	44.6	0.23	197.372		
200.0	200.0	201.0	201.0	0.3	0.3	0.00	44.8	0.0	44.8	44.1	0.68	66.240		
300.0	300.0	301.6	301.5	0.6	0.6	2.16	44.1	1.7	44.2	43.1	1.11	39.685		
400.0	400.0	401.9	401.7	0.8	0.8	8.88	42.1	6.6	42.6	41.1	1.56	27.386		
500.0	500.0	501.7	501.1	1.0	1.0	20.73	38.8	14.7	41.5	39.5	2.02	20.573		
509.4	509.4	511.0	510.4	1.0	1.0	22.10	38.5	15.6	41.5	39.5	2.06	20.129 CC, ES		
600.0	600.0	600.7	599.4	1.2	1.3	37.10	34.3	25.9	43.0	40.5	2.48	17.346		
700.0	700.0	699.1	696.6	1.4	1.6	-64.58	28.5	40.2	48.7	45.6	3.04	16.005		
800.0	799.8	797.1	792.8	1.6	2.0	-52.91	21.5	57.4	57.5	53.9	3.53	16.278		
900.0	899.5	894.5	887.8	1.9	2.5	-44.79	13.3	77.6	68.1	64.1	4.03	16.904		
1,000.0	998.7	991.6	981.5	2.1	3.0	-39.14	3.9	100.7	79.9	75.3	4.55	17.561		
1,100.0	1,097.5	1,088.2	1,074.0	2.4	3.5	-35.15	-6.6	126.5	92.3	87.2	5.09	18.120		
1,200.0	1,195.6	1,185.8	1,166.6	2.8	4.1	-32.34	-18.2	155.3	104.7	99.1	5.67	18.466		
1,300.0	1,293.1	1,285.3	1,260.8	3.2	4.8	-30.89	-30.3	184.9	114.8	108.5	6.29	18.235		
1,363.2	1,354.2	1,348.3	1,320.5	3.4	5.2	-30.54	-37.9	203.7	119.6	112.9	6.71	17.815		
1,400.0	1,389.7	1,385.0	1,355.2	3.6	5.5	-30.47	-42.4	214.6	122.1	115.1	6.98	17.496		
1,500.0	1,486.2	1,484.8	1,449.7	4.1	6.1	-30.30	-54.4	244.4	128.7	121.0	7.70	16.723		
1,600.0	1,582.7	1,584.5	1,544.1	4.6	6.8	-30.14	-66.5	274.1	135.4	127.0	8.43	16.062		
1,700.0	1,679.1	1,684.3	1,638.6	5.2	7.5	-30.00	-78.6	303.8	142.1	133.0	9.17	15.492		
1,800.0	1,775.6	1,784.1	1,733.1	5.7	8.2	-29.88	-90.7	333.6	148.8	138.9	9.92	14.999		
1,900.0	1,872.1	1,883.9	1,827.6	6.2	8.8	-29.76	-102.7	363.3	155.5	144.8	10.68	14.568		
2,000.0	1,968.5	1,983.6	1,922.0	6.8	9.5	-29.65	-114.8	393.0	162.2	150.8	11.43	14.190		
2,100.0	2,065.0	2,083.4	2,016.5	7.3	10.2	-29.55	-126.9	422.8	168.9	156.7	12.19	13.855		
2,200.0	2,161.5	2,183.2	2,111.0	7.9	10.9	-29.46	-139.0	452.5	175.6	162.7	12.95	13.557		
2,300.0	2,258.0	2,283.0	2,205.4	8.4	11.6	-29.38	-151.0	482.2	182.3	168.6	13.72	13.291		
2,400.0	2,354.4	2,382.7	2,299.9	9.0	12.3	-29.30	-163.1	512.0	189.0	174.5	14.48	13.052		
2,500.0	2,450.9	2,482.5	2,394.4	9.5	12.9	-29.23	-175.2	541.7	195.7	180.4	15.25	12.836		
2,600.0	2,547.4	2,582.3	2,488.9	10.1	13.6	-29.16	-187.3	571.4	202.4	186.4	16.01	12.639		
2,700.0	2,643.8	2,682.1	2,583.3	10.7	14.3	-29.09	-199.3	601.2	209.1	192.3	16.78	12.461		
2,800.0	2,740.3	2,781.8	2,677.8	11.2	15.0	-29.03	-211.4	630.9	215.8	198.2	17.55	12.297		
2,900.0	2,836.8	2,881.6	2,772.3	11.8	15.7	-28.98	-223.5	660.6	222.5	204.2	18.32	12.147		
3,000.0	2,933.3	2,981.4	2,866.8	12.4	16.4	-28.93	-235.6	690.4	229.2	210.1	19.09	12.008		
3,100.0	3,029.7	3,081.2	2,961.2	12.9	17.1	-28.88	-247.7	720.1	235.9	216.0	19.85	11.880		
3,200.0	3,126.2	3,180.9	3,055.7	13.5	17.8	-28.83	-259.7	749.8	242.6	222.0	20.62	11.762		
3,300.0	3,222.7	3,280.7	3,150.2	14.1	18.4	-28.78	-271.8	779.6	249.3	227.9	21.39	11.652		
3,400.0	3,319.1	3,380.5	3,244.6	14.6	19.1	-28.74	-283.9	809.3	256.0	233.8	22.16	11.549		
3,500.0	3,415.6	3,480.3	3,339.1	15.2	19.8	-28.70	-296.0	839.1	262.7	239.7	22.93	11.453		
3,600.0	3,512.1	3,580.0	3,433.6	15.8	20.5	-28.66	-308.0	868.8	269.4	245.7	23.71	11.364		
3,700.0	3,608.6	3,679.8	3,528.1	16.3	21.2	-28.63	-320.1	898.5	276.1	251.6	24.48	11.280		
3,800.0	3,705.0	3,779.6	3,622.5	16.9	21.9	-28.59	-332.2	928.3	282.8	257.5	25.25	11.201		
3,900.0	3,801.5	3,879.4	3,717.0	17.5	22.6	-28.56	-344.3	958.0	289.5	263.5	26.02	11.126		
4,000.0	3,898.0	3,979.1	3,811.5	18.0	23.3	-28.53	-356.3	987.7	296.2	269.4	26.79	11.056		
4,100.0	3,994.5	4,078.9	3,906.0	18.6	23.9	-28.50	-368.4	1,017.5	302.9	275.3	27.56	10.990		
4,200.0	4,090.9	4,178.7	4,000.4	19.2	24.6	-28.47	-380.5	1,047.2	309.6	281.2	28.33	10.927		
4,300.0	4,187.4	4,278.5	4,094.9	19.7	25.3	-28.44	-392.6	1,076.9	316.3	287.2	29.10	10.868		
4,400.0	4,283.9	4,378.2	4,189.4	20.3	26.0	-28.41	-404.6	1,106.7	323.0	293.1	29.87	10.812		
4,500.0	4,380.3	4,478.0	4,283.8	20.9	26.7	-28.39	-416.7	1,136.4	329.7	299.0	30.64	10.758		
4,600.0	4,476.8	4,577.8	4,378.3	21.4	27.4	-28.37	-428.8	1,166.1	336.4	305.0	31.41	10.707		
4,700.0	4,573.3	4,677.6	4,472.8	22.0	28.1	-28.34	-440.9	1,195.9	343.1	310.9	32.19	10.659		
4,800.0	4,669.8	4,777.3	4,567.3	22.6	28.8	-28.32	-453.0	1,225.6	349.8	316.8	32.96	10.613		
4,900.0	4,766.2	4,877.1	4,661.7	23.1	29.5	-28.30	-465.0	1,255.3	356.5	322.7	33.73	10.569		

CC - Min centre to center distance or convergent point, SF - min separation factor, ES - min ellipse separation

<b>Company:</b>	Synergy Resources	<b>Local Co-ordinate Reference:</b>	Well SRC Evans D-26-23-14CHZ
<b>Project:</b>	SEC.26-T5N-R66W	<b>TVD Reference:</b>	WELL @ 4769.0ft (RKB - 15')
<b>Reference Site:</b>	SRC Evans East Pad Sec.26-T5N-R66W	<b>MD Reference:</b>	WELL @ 4769.0ft (RKB - 15')
<b>Site Error:</b>	0.0ft	<b>North Reference:</b>	True
<b>Reference Well:</b>	SRC Evans D-26-23-14CHZ	<b>Survey Calculation Method:</b>	Minimum Curvature
<b>Well Error:</b>	0.0ft	<b>Output errors are at</b>	2.00 sigma
<b>Reference Wellbore</b>	Wellbore #1	<b>Database:</b>	Landmark
<b>Reference Design:</b>	Plan #1 (10-27-14)	<b>Offset TVD Reference:</b>	Offset Datum

Offset Design													Offset Site Error:	0.0 ft
Survey Program: 0-MWD													Offset Well Error:	0.0 ft
Reference		Offset		Semi Major Axis			Distance							Warning
Measured Depth (ft)	Vertical Depth (ft)	Measured Depth (ft)	Vertical Depth (ft)	Reference (ft)	Offset (ft)	Highside Toolface (°)	Offset Wellbore Centre +N/-S (ft)	+E/-W (ft)	Between Centres (ft)	Between Ellipses (ft)	Minimum Separation (ft)	Separation Factor		
5,000.0	4,862.7	4,976.9	4,756.2	23.7	30.2	-28.28	-477.1	1,285.1	363.2	328.7	34.50	10.527		
5,100.0	4,959.2	5,076.7	4,850.7	24.3	30.8	-28.26	-489.2	1,314.8	369.9	334.6	35.27	10.487		
5,200.0	5,055.6	5,176.4	4,945.2	24.8	31.5	-28.24	-501.3	1,344.5	376.6	340.5	36.04	10.448		
5,300.0	5,152.1	5,276.2	5,039.6	25.4	32.2	-28.22	-513.3	1,374.3	383.3	346.5	36.81	10.411		
5,400.0	5,248.6	5,376.0	5,134.1	26.0	32.9	-28.20	-525.4	1,404.0	390.0	352.4	37.59	10.376		
5,500.0	5,345.1	5,475.8	5,228.6	26.5	33.6	-28.18	-537.5	1,433.8	396.7	358.3	38.36	10.342		
5,600.0	5,441.5	5,575.5	5,323.0	27.1	34.3	-28.17	-549.6	1,463.5	403.4	364.2	39.13	10.309		
5,700.0	5,538.0	5,675.3	5,417.5	27.7	35.0	-28.15	-561.6	1,493.2	410.1	370.2	39.90	10.278		
5,800.0	5,634.5	5,775.1	5,512.0	28.3	35.7	-28.13	-573.7	1,523.0	416.8	376.1	40.67	10.247		
5,900.0	5,730.9	5,874.9	5,606.5	28.8	36.4	-28.12	-585.8	1,552.7	423.5	382.0	41.44	10.218		
6,000.0	5,827.4	5,974.7	5,700.9	29.4	37.0	-28.10	-597.9	1,582.4	430.2	388.0	42.21	10.190		
6,100.0	5,923.9	6,074.4	5,795.4	30.0	37.7	-28.09	-609.9	1,612.2	436.9	393.9	42.99	10.163		
6,200.0	6,020.4	6,174.2	5,889.9	30.5	38.4	-28.08	-622.0	1,641.9	443.6	399.8	43.76	10.137		
6,300.0	6,116.8	6,274.0	5,984.4	31.1	39.1	-28.06	-634.1	1,671.6	450.3	405.7	44.53	10.112		
6,400.0	6,213.3	6,373.8	6,078.8	31.7	39.8	-28.05	-646.2	1,701.4	457.0	411.7	45.30	10.088		
6,500.0	6,309.8	6,473.5	6,173.3	32.2	40.5	-28.04	-658.3	1,731.1	463.7	417.6	46.07	10.064		
6,600.0	6,406.3	6,573.3	6,267.8	32.8	41.2	-28.02	-670.3	1,760.8	470.4	423.5	46.84	10.042		
6,612.8	6,418.6	6,586.1	6,279.9	32.9	41.3	-28.02	-671.9	1,764.7	471.2	424.3	46.94	10.039		
6,650.0	6,454.6	6,623.2	6,315.0	33.1	41.5	-17.55	-676.4	1,775.7	473.7	426.5	47.26	10.024		
6,700.0	6,503.1	6,672.9	6,362.0	33.3	41.9	-1.21	-682.4	1,790.5	477.0	429.6	47.41	10.061		
6,750.0	6,551.7	6,722.1	6,408.7	33.5	42.2	15.57	-688.3	1,805.2	480.3	433.0	47.30	10.155		
6,800.0	6,600.0	6,771.1	6,455.1	33.6	42.5	30.43	-693.9	1,819.8	483.8	436.8	46.95	10.304		
6,850.0	6,647.9	6,820.7	6,502.4	33.7	42.8	42.28	-696.7	1,834.7	487.5	440.9	46.54	10.475		
6,900.0	6,695.1	6,871.2	6,550.5	33.8	43.0	51.38	-695.9	1,849.8	491.4	445.3	46.11	10.656		
6,950.0	6,741.3	6,922.6	6,599.3	33.9	43.3	58.40	-691.5	1,865.2	495.5	449.8	45.69	10.843		
7,000.0	6,786.4	6,974.9	6,648.6	34.0	43.5	63.91	-683.3	1,880.6	499.7	454.4	45.29	11.035		
7,050.0	6,830.1	7,028.1	6,698.0	34.0	43.7	68.35	-671.1	1,896.1	504.1	459.2	44.90	11.227		
7,100.0	6,872.2	7,082.2	6,747.2	34.0	43.8	71.99	-654.7	1,911.6	508.5	464.0	44.54	11.418		
7,150.0	6,912.5	7,137.4	6,796.0	34.0	44.0	75.04	-634.1	1,926.9	513.0	468.8	44.21	11.603		
7,200.0	6,950.8	7,193.6	6,844.0	34.0	44.1	77.63	-609.1	1,942.0	517.4	473.5	43.93	11.779		
7,250.0	6,986.9	7,250.8	6,890.8	34.0	44.2	79.84	-579.7	1,956.6	521.8	478.1	43.69	11.945		
7,300.0	7,020.7	7,309.0	6,936.0	34.0	44.2	81.75	-545.9	1,970.8	526.1	482.6	43.49	12.096		
7,350.0	7,052.0	7,368.2	6,979.1	33.9	44.3	83.40	-507.6	1,984.2	530.2	486.8	43.35	12.230		
7,400.0	7,080.6	7,428.4	7,019.7	33.8	44.3	84.82	-465.1	1,996.9	534.0	490.7	43.26	12.343		
7,450.0	7,106.4	7,489.5	7,057.3	33.8	44.3	86.05	-418.4	2,008.7	537.6	494.3	43.24	12.432		
7,500.0	7,129.2	7,551.4	7,091.4	33.7	44.3	87.08	-367.7	2,019.3	540.8	497.5	43.28	12.495		
7,550.0	7,149.0	7,614.2	7,121.5	33.6	44.2	87.95	-313.5	2,028.7	543.6	500.2	43.40	12.528		
7,600.0	7,165.7	7,677.6	7,147.3	33.5	44.2	88.65	-256.2	2,036.6	546.0	502.5	43.59	12.528		
7,650.0	7,179.2	7,741.6	7,168.2	33.4	44.1	89.19	-196.1	2,043.1	548.0	504.1	43.86	12.496		
7,700.0	7,189.3	7,806.0	7,184.1	33.3	44.0	89.58	-133.8	2,048.0	549.4	505.2	44.21	12.428		
7,750.0	7,196.1	7,870.7	7,194.6	33.3	43.9	89.82	-70.1	2,051.2	550.4	505.7	44.65	12.326		
7,800.0	7,199.6	7,935.6	7,199.6	33.2	43.8	89.90	-5.4	2,052.6	550.8	505.6	45.17	12.193		
7,825.7	7,200.0	7,967.3	7,200.0	33.1	43.8	89.90	26.3	2,052.7	550.8	505.3	45.46	12.117		
7,900.0	7,200.0	8,041.6	7,200.0	33.0	43.7	89.90	100.6	2,052.5	550.8	504.8	45.98	11.978		
8,000.0	7,200.0	8,141.6	7,200.0	33.0	43.6	89.90	200.6	2,052.3	550.8	503.9	46.88	11.748		
8,100.0	7,200.0	8,241.6	7,200.0	33.0	43.5	89.90	300.6	2,052.0	550.8	502.7	48.08	11.457		
8,200.0	7,200.0	8,341.6	7,200.0	33.1	43.6	89.90	400.6	2,051.8	550.8	501.3	49.54	11.119		
8,300.0	7,200.0	8,441.6	7,200.0	33.3	43.6	89.90	500.6	2,051.6	550.8	499.6	51.25	10.748		
8,400.0	7,200.0	8,541.6	7,200.0	33.7	43.8	89.90	600.6	2,051.3	550.8	497.7	53.18	10.358		
8,500.0	7,200.0	8,641.6	7,200.0	34.2	44.0	89.90	700.6	2,051.1	550.9	495.5	55.31	9.959		
8,600.0	7,200.0	8,741.6	7,200.0	34.9	44.3	89.90	800.6	2,050.9	550.9	493.3	57.62	9.560		
8,700.0	7,200.0	8,841.6	7,200.0	35.7	44.7	89.90	900.6	2,050.6	550.9	490.8	60.09	9.168		

CC - Min centre to center distance or convergent point, SF - min separation factor, ES - min ellipse separation

<b>Company:</b>	Synergy Resources	<b>Local Co-ordinate Reference:</b>	Well SRC Evans D-26-23-14CHZ
<b>Project:</b>	SEC.26-T5N-R66W	<b>TVD Reference:</b>	WELL @ 4769.0ft (RKB - 15')
<b>Reference Site:</b>	SRC Evans East Pad Sec.26-T5N-R66W	<b>MD Reference:</b>	WELL @ 4769.0ft (RKB - 15')
<b>Site Error:</b>	0.0ft	<b>North Reference:</b>	True
<b>Reference Well:</b>	SRC Evans D-26-23-14CHZ	<b>Survey Calculation Method:</b>	Minimum Curvature
<b>Well Error:</b>	0.0ft	<b>Output errors are at</b>	2.00 sigma
<b>Reference Wellbore</b>	Wellbore #1	<b>Database:</b>	Landmark
<b>Reference Design:</b>	Plan #1 (10-27-14)	<b>Offset TVD Reference:</b>	Offset Datum

Offset Design												Offset Site Error:	0.0 ft
Survey Program: 0-MWD												Offset Well Error:	0.0 ft
Reference		Offset		Semi Major Axis			Distance						Warning
Measured Depth (ft)	Vertical Depth (ft)	Measured Depth (ft)	Vertical Depth (ft)	Reference (ft)	Offset (ft)	Highside Toolface (°)	Offset Wellbore Centre +N/-S (ft)	+E/-W (ft)	Between Centres (ft)	Between Ellipses (ft)	Minimum Separation (ft)	Separation Factor	
8,800.0	7,200.0	8,941.6	7,200.0	36.7	45.2	89.90	1,000.6	2,050.4	550.9	488.2	62.69	8.787	
8,900.0	7,200.0	9,041.6	7,200.0	37.7	45.8	89.90	1,100.6	2,050.2	550.9	485.5	65.42	8.421	
9,000.0	7,200.0	9,141.6	7,200.0	38.9	46.4	89.90	1,200.6	2,049.9	550.9	482.7	68.25	8.072	
9,100.0	7,200.0	9,241.6	7,200.0	40.1	47.2	89.90	1,300.6	2,049.7	550.9	479.7	71.18	7.740	
9,200.0	7,200.0	9,341.6	7,200.0	41.5	48.1	89.90	1,400.6	2,049.5	550.9	476.7	74.19	7.426	
9,300.0	7,200.0	9,441.6	7,200.0	42.8	49.1	89.90	1,500.6	2,049.2	550.9	473.7	77.28	7.130	
9,400.0	7,200.0	9,541.6	7,200.0	44.3	50.1	89.90	1,600.6	2,049.0	551.0	470.5	80.43	6.850	
9,500.0	7,200.0	9,641.6	7,200.0	45.8	51.2	89.90	1,700.6	2,048.8	551.0	467.3	83.63	6.588	
9,600.0	7,200.0	9,741.6	7,200.0	47.3	52.4	89.90	1,800.6	2,048.5	551.0	464.1	86.89	6.341	
9,700.0	7,200.0	9,841.6	7,200.0	48.8	53.7	89.90	1,900.6	2,048.3	551.0	460.8	90.20	6.109	
9,800.0	7,200.0	9,941.6	7,200.0	50.4	55.0	89.90	2,000.6	2,048.1	551.0	457.5	93.55	5.890	
9,900.0	7,200.0	10,041.6	7,200.0	52.0	56.3	89.90	2,100.6	2,047.8	551.0	454.1	96.93	5.685	
10,000.0	7,200.0	10,141.6	7,200.0	53.6	57.7	89.90	2,200.6	2,047.6	551.0	450.7	100.35	5.491	
10,100.0	7,200.0	10,241.6	7,200.0	55.3	59.2	89.90	2,300.6	2,047.4	551.0	447.2	103.79	5.309	
10,200.0	7,200.0	10,341.6	7,200.0	56.9	60.7	89.90	2,400.6	2,047.1	551.0	443.8	107.27	5.137	
10,300.0	7,200.0	10,441.6	7,200.0	58.6	62.2	89.90	2,500.6	2,046.9	551.1	440.3	110.76	4.975	
10,400.0	7,200.0	10,541.6	7,200.0	60.3	63.7	89.90	2,600.6	2,046.7	551.1	436.8	114.28	4.822	
10,500.0	7,200.0	10,641.6	7,200.0	62.0	65.3	89.90	2,700.6	2,046.4	551.1	433.3	117.82	4.677	
10,600.0	7,200.0	10,741.6	7,200.0	63.7	66.9	89.90	2,800.6	2,046.2	551.1	429.7	121.38	4.540	
10,700.0	7,200.0	10,841.6	7,200.0	65.4	68.5	89.90	2,900.6	2,046.0	551.1	426.1	124.96	4.410	
10,800.0	7,200.0	10,941.6	7,200.0	67.2	70.1	89.90	3,000.6	2,045.7	551.1	422.6	128.55	4.287	
10,900.0	7,200.0	11,041.6	7,200.0	68.9	71.7	89.90	3,100.6	2,045.5	551.1	419.0	132.15	4.170	
11,000.0	7,200.0	11,141.6	7,200.0	70.7	73.4	89.90	3,200.6	2,045.3	551.1	415.4	135.77	4.059	
11,100.0	7,200.0	11,241.6	7,200.0	72.4	75.1	89.90	3,300.6	2,045.0	551.1	411.7	139.40	3.954	
11,200.0	7,200.0	11,341.6	7,200.0	74.2	76.7	89.90	3,400.6	2,044.8	551.2	408.1	143.04	3.853	
11,300.0	7,200.0	11,441.6	7,200.0	76.0	78.4	89.90	3,500.6	2,044.6	551.2	404.5	146.69	3.757	
11,400.0	7,200.0	11,541.6	7,200.0	77.8	80.1	89.90	3,600.6	2,044.3	551.2	400.8	150.35	3.666	
11,500.0	7,200.0	11,641.6	7,200.0	79.6	81.9	89.90	3,700.6	2,044.1	551.2	397.2	154.02	3.579	
11,600.0	7,200.0	11,741.6	7,200.0	81.4	83.6	89.90	3,800.6	2,043.9	551.2	393.5	157.70	3.495	
11,700.0	7,200.0	11,841.6	7,200.0	83.2	85.3	89.90	3,900.6	2,043.6	551.2	389.8	161.39	3.415	
11,800.0	7,200.0	11,941.6	7,200.0	85.0	87.1	89.90	4,000.6	2,043.4	551.2	386.1	165.08	3.339	
11,900.0	7,200.0	12,041.6	7,200.0	86.8	88.8	89.90	4,100.6	2,043.2	551.2	382.4	168.78	3.266	
12,000.0	7,200.0	12,141.6	7,200.0	88.6	90.6	89.90	4,200.6	2,042.9	551.2	378.8	172.48	3.196	
12,100.0	7,200.0	12,241.6	7,200.0	90.4	92.3	89.90	4,300.6	2,042.7	551.3	375.1	176.20	3.129	
12,200.0	7,200.0	12,341.6	7,200.0	92.3	94.1	89.90	4,400.6	2,042.5	551.3	371.3	179.91	3.064	
12,300.0	7,200.0	12,441.6	7,200.0	94.1	95.9	89.90	4,500.6	2,042.2	551.3	367.6	183.64	3.002	
12,400.0	7,200.0	12,541.6	7,200.0	95.9	97.7	89.90	4,600.6	2,042.0	551.3	363.9	187.36	2.942	
12,500.0	7,200.0	12,641.6	7,200.0	97.8	99.5	89.90	4,700.6	2,041.8	551.3	360.2	191.10	2.885	
12,600.0	7,200.0	12,741.6	7,200.0	99.6	101.2	89.90	4,800.6	2,041.5	551.3	356.5	194.83	2.830	
12,700.0	7,200.0	12,841.6	7,200.0	101.4	103.0	89.90	4,900.6	2,041.3	551.3	352.7	198.57	2.776	
12,800.0	7,200.0	12,941.6	7,200.0	103.3	104.8	89.90	5,000.6	2,041.1	551.3	349.0	202.32	2.725	
12,900.0	7,200.0	13,041.6	7,200.0	105.1	106.7	89.90	5,100.6	2,040.8	551.3	345.3	206.06	2.676	
13,000.0	7,200.0	13,141.6	7,200.0	107.0	108.5	89.90	5,200.6	2,040.6	551.3	341.5	209.81	2.628	
13,100.0	7,200.0	13,241.6	7,200.0	108.8	110.3	89.90	5,300.6	2,040.4	551.4	337.8	213.57	2.582	
13,200.0	7,200.0	13,341.6	7,200.0	110.7	112.1	89.90	5,400.6	2,040.1	551.4	334.0	217.33	2.537	
13,300.0	7,200.0	13,441.6	7,200.0	112.5	113.9	89.90	5,500.6	2,039.9	551.4	330.3	221.09	2.494	
13,400.0	7,200.0	13,541.6	7,200.0	114.4	115.7	89.90	5,600.6	2,039.7	551.4	326.5	224.85	2.452	
13,500.0	7,200.0	13,641.6	7,200.0	116.3	117.6	89.90	5,700.6	2,039.4	551.4	322.8	228.62	2.412	
13,600.0	7,200.0	13,741.6	7,200.0	118.1	119.4	89.90	5,800.6	2,039.2	551.4	319.0	232.38	2.373	
13,700.0	7,200.0	13,841.6	7,200.0	120.0	121.2	89.90	5,900.6	2,039.0	551.4	315.3	236.15	2.335	
13,800.0	7,200.0	13,941.6	7,200.0	121.9	123.1	89.90	6,000.6	2,038.7	551.4	311.5	239.93	2.298	
13,900.0	7,200.0	14,041.6	7,200.0	123.7	124.9	89.90	6,100.6	2,038.5	551.4	307.7	243.70	2.263	

CC - Min centre to center distance or convergent point, SF - min separation factor, ES - min ellipse separation

<b>Company:</b>	Synergy Resources	<b>Local Co-ordinate Reference:</b>	Well SRC Evans D-26-23-14CHZ
<b>Project:</b>	SEC.26-T5N-R66W	<b>TVD Reference:</b>	WELL @ 4769.0ft (RKB - 15')
<b>Reference Site:</b>	SRC Evans East Pad Sec.26-T5N-R66W	<b>MD Reference:</b>	WELL @ 4769.0ft (RKB - 15')
<b>Site Error:</b>	0.0ft	<b>North Reference:</b>	True
<b>Reference Well:</b>	SRC Evans D-26-23-14CHZ	<b>Survey Calculation Method:</b>	Minimum Curvature
<b>Well Error:</b>	0.0ft	<b>Output errors are at</b>	2.00 sigma
<b>Reference Wellbore</b>	Wellbore #1	<b>Database:</b>	Landmark
<b>Reference Design:</b>	Plan #1 (10-27-14)	<b>Offset TVD Reference:</b>	Offset Datum

Offset Design												Offset Site Error:	0.0 ft
Survey Program: 0-MWD												Offset Well Error:	0.0 ft
Reference		Offset		Semi Major Axis			Distance						Warning
Measured Depth (ft)	Vertical Depth (ft)	Measured Depth (ft)	Vertical Depth (ft)	Reference (ft)	Offset (ft)	Highside Toolface (°)	Offset Wellbore Centre +N/-S (ft)	+E/-W (ft)	Between Centres (ft)	Between Ellipses (ft)	Minimum Separation (ft)	Separation Factor	
14,000.0	7,200.0	14,141.6	7,200.0	125.6	126.7	89.90	6,200.6	2,038.3	551.5	304.0	247.48	2.228	
14,100.0	7,200.0	14,241.6	7,200.0	127.5	128.6	89.90	6,300.6	2,038.0	551.5	300.2	251.26	2.195	
14,200.0	7,200.0	14,341.6	7,200.0	129.3	130.4	89.90	6,400.6	2,037.8	551.5	296.4	255.04	2.162	
14,300.0	7,200.0	14,441.6	7,200.0	131.2	132.3	89.90	6,500.6	2,037.6	551.5	292.7	258.82	2.131	
14,400.0	7,200.0	14,541.6	7,200.0	133.1	134.1	89.90	6,600.6	2,037.3	551.5	288.9	262.61	2.100	
14,500.0	7,200.0	14,641.6	7,200.0	135.0	136.0	89.90	6,700.6	2,037.1	551.5	285.1	266.39	2.070	
14,600.0	7,200.0	14,741.6	7,200.0	136.8	137.8	89.90	6,800.6	2,036.9	551.5	281.3	270.18	2.041	
14,700.0	7,200.0	14,841.6	7,200.0	138.7	139.7	89.90	6,900.6	2,036.6	551.5	277.6	273.97	2.013	
14,800.0	7,200.0	14,941.6	7,200.0	140.6	141.5	89.90	7,000.6	2,036.4	551.5	273.8	277.76	1.986	
14,900.0	7,200.0	15,041.6	7,200.0	142.5	143.4	89.90	7,100.6	2,036.2	551.6	270.0	281.56	1.959	
15,000.0	7,200.0	15,141.6	7,200.0	144.4	145.3	89.90	7,200.6	2,035.9	551.6	266.2	285.35	1.933	
15,100.0	7,200.0	15,241.6	7,200.0	146.2	147.1	89.90	7,300.6	2,035.7	551.6	262.4	289.14	1.908	
15,200.0	7,200.0	15,341.6	7,200.0	148.1	149.0	89.90	7,400.6	2,035.5	551.6	258.6	292.94	1.883	
15,300.0	7,200.0	15,441.6	7,200.0	150.0	150.9	89.90	7,500.6	2,035.2	551.6	254.9	296.74	1.859	
15,400.0	7,200.0	15,541.6	7,200.0	151.9	152.7	89.90	7,600.6	2,035.0	551.6	251.1	300.54	1.835	
15,500.0	7,200.0	15,641.6	7,200.0	153.8	154.6	89.90	7,700.6	2,034.8	551.6	247.3	304.34	1.813	
15,600.0	7,200.0	15,741.6	7,200.0	155.7	156.5	89.90	7,800.6	2,034.5	551.6	243.5	308.14	1.790	
15,700.0	7,200.0	15,841.6	7,200.0	157.5	158.3	89.90	7,900.6	2,034.3	551.6	239.7	311.94	1.768	
15,800.0	7,200.0	15,941.6	7,200.0	159.4	160.2	89.90	8,000.6	2,034.1	551.7	235.9	315.74	1.747	
15,900.0	7,200.0	16,041.6	7,200.0	161.3	162.1	89.90	8,100.6	2,033.8	551.7	232.1	319.55	1.726	
16,000.0	7,200.0	16,141.6	7,200.0	163.2	163.9	89.90	8,200.6	2,033.6	551.7	228.3	323.35	1.706	
16,100.0	7,200.0	16,241.6	7,200.0	165.1	165.8	89.90	8,300.6	2,033.4	551.7	224.5	327.16	1.686	
16,200.0	7,200.0	16,341.6	7,200.0	167.0	167.7	89.90	8,400.6	2,033.1	551.7	220.7	330.96	1.667	
16,300.0	7,200.0	16,441.6	7,200.0	168.9	169.6	89.90	8,500.6	2,032.9	551.7	216.9	334.77	1.648	
16,400.0	7,200.0	16,541.6	7,200.0	170.8	171.4	89.90	8,600.6	2,032.7	551.7	213.1	338.58	1.630	
16,500.0	7,200.0	16,641.6	7,200.0	172.7	173.3	89.90	8,700.6	2,032.4	551.7	209.3	342.39	1.611	
16,600.0	7,200.0	16,741.6	7,200.0	174.6	175.2	89.90	8,800.6	2,032.2	551.7	205.5	346.20	1.594	
16,700.0	7,200.0	16,841.6	7,200.0	176.5	177.1	89.90	8,900.6	2,032.0	551.7	201.7	350.01	1.576	
16,800.0	7,200.0	16,941.6	7,200.0	178.4	179.0	89.90	9,000.6	2,031.7	551.8	197.9	353.82	1.559	
16,900.0	7,200.0	17,041.6	7,200.0	180.3	180.8	89.90	9,100.6	2,031.5	551.8	194.1	357.63	1.543	
17,000.0	7,200.0	17,141.6	7,200.0	182.2	182.7	89.90	9,200.6	2,031.3	551.8	190.3	361.44	1.527	
17,058.0	7,200.0	17,199.7	7,200.0	183.3	183.8	89.90	9,258.6	2,031.1	551.8	188.1	363.65	1.517	
17,100.0	7,200.0	17,234.4	7,200.0	184.0	184.4	89.90	9,293.3	2,031.0	551.8	186.9	364.99	1.512	
17,114.9	7,200.0	17,234.4	7,200.0	184.3	184.4	89.90	9,293.3	2,031.0	552.2	187.0	365.27	1.512 SF	

SRC Evans East Pad Sec.26-T5N-R66W - SRC Evans 43-26-23-14NHZ - Wellbore #1 - Plan #1 (10-27)												Offset Site Error:	0.0 ft
Survey Program: 0-MWD												Offset Well Error:	0.0 ft
Reference		Offset		Semi Major Axis			Distance						Warning
Measured Depth Depth (ft)	Vertical Depth (ft)	Measured Depth (ft)	Vertical Depth (ft)	Reference  (ft)	Offset  (ft)	Highside Toolface (°)	Offset Wellbore Centre +N/-S (ft)	+E/-W (ft)	Between Centres (ft)	Between Ellipses (ft)	Minimum Separation (ft)	Separation Factor	
0.0	0.0	0.0	0.0	0.0	0.0	0.00	22.6	0.0	22.6				
100.0	100.0	100.0	100.0	0.1	0.1	0.00	22.6	0.0	22.6	22.4	0.22	100.474	
200.0	200.0	200.0	200.0	0.3	0.3	0.00	22.6	0.0	22.6	21.9	0.67	33.491	
300.0	300.0	300.0	300.0	0.6	0.6	0.00	22.6	0.0	22.6	21.5	1.12	20.095	
400.0	400.0	400.0	400.0	0.8	0.8	0.00	22.6	0.0	22.6	21.0	1.57	14.353	
500.0	500.0	500.3	500.3	1.0	1.0	4.18	21.9	1.6	21.9	19.9	2.01	10.923	
600.0	600.0	600.3	600.2	1.2	1.2	17.93	19.7	6.4	20.7	18.2	2.44	8.484	
632.4	632.4	632.6	632.4	1.3	1.3	-93.36	18.6	8.6	20.5	18.0	2.58	7.967	CC, ES
700.0	700.0	700.0	699.5	1.4	1.4	-80.47	16.0	14.3	21.1	18.2	2.87	7.348	
800.0	799.8	799.5	798.2	1.6	1.7	-64.03	11.0	25.3	23.8	20.5	3.32	7.181	
900.0	899.5	898.8	896.2	1.9	2.0	-52.00	4.5	39.4	28.2	24.4	3.79	7.438	
1,000.0	998.7	997.8	993.4	2.1	2.4	-43.70	-3.4	56.5	33.6	29.3	4.29	7.832	
1,100.0	1,097.5	1,096.5	1,089.7	2.4	2.8	-38.00	-12.6	76.6	39.5	34.7	4.80	8.225	
1,200.0	1,195.6	1,195.1	1,184.9	2.8	3.3	-34.02	-23.2	99.6	45.8	40.4	5.35	8.562	
1,300.0	1,293.1	1,293.4	1,279.0	3.2	3.8	-31.19	-35.1	125.6	52.2	46.3	5.92	8.822	
1,363.2	1,354.2	1,356.3	1,338.8	3.4	4.2	-30.05	-43.2	143.3	55.9	49.6	6.31	8.861	
1,400.0	1,389.7	1,393.1	1,373.8	3.6	4.4	-29.67	-48.0	153.6	57.8	51.2	6.55	8.811	
1,500.0	1,486.2	1,492.9	1,468.7	4.1	5.0	-28.75	-60.9	181.7	62.7	55.5	7.22	8.681	
1,600.0	1,582.7	1,592.8	1,563.7	4.6	5.7	-27.96	-73.8	209.8	67.6	59.7	7.90	8.563	
1,700.0	1,679.1	1,692.7	1,658.7	5.2	6.3	-27.28	-86.7	237.9	72.6	64.0	8.58	8.462	
1,800.0	1,775.6	1,792.6	1,753.6	5.7	7.0	-26.69	-99.6	265.9	77.6	68.3	9.26	8.374	
1,900.0	1,872.1	1,892.4	1,848.6	6.2	7.6	-26.17	-112.5	294.0	82.6	72.6	9.95	8.297	
2,000.0	1,968.5	1,992.3	1,943.6	6.8	8.2	-25.70	-125.4	322.1	87.5	76.9	10.64	8.230	
2,100.0	2,065.0	2,092.2	2,038.6	7.3	8.9	-25.29	-138.3	350.2	92.5	81.2	11.32	8.171	
2,200.0	2,161.5	2,192.1	2,133.5	7.9	9.6	-24.92	-151.2	378.3	97.5	85.5	12.01	8.119	
2,300.0	2,258.0	2,291.9	2,228.5	8.4	10.2	-24.59	-164.1	406.4	102.5	89.8	12.70	8.072	
2,400.0	2,354.4	2,391.8	2,323.5	9.0	10.9	-24.28	-177.0	434.5	107.5	94.1	13.39	8.030	
2,500.0	2,450.9	2,491.7	2,418.4	9.5	11.5	-24.01	-189.9	462.6	112.5	98.5	14.08	7.993	



<b>Company:</b>	Synergy Resources	<b>Local Co-ordinate Reference:</b>	Well SRC Evans D-26-23-14CHZ
<b>Project:</b>	SEC.26-T5N-R66W	<b>TVD Reference:</b>	WELL @ 4769.0ft (RKB - 15')
<b>Reference Site:</b>	SRC Evans East Pad Sec.26-T5N-R66W	<b>MD Reference:</b>	WELL @ 4769.0ft (RKB - 15')
<b>Site Error:</b>	0.0ft	<b>North Reference:</b>	True
<b>Reference Well:</b>	SRC Evans D-26-23-14CHZ	<b>Survey Calculation Method:</b>	Minimum Curvature
<b>Well Error:</b>	0.0ft	<b>Output errors are at</b>	2.00 sigma
<b>Reference Wellbore</b>	Wellbore #1	<b>Database:</b>	Landmark
<b>Reference Design:</b>	Plan #1 (10-27-14)	<b>Offset TVD Reference:</b>	Offset Datum

Offset Design												Offset Site Error:	0.0 ft
Survey Program: 0-MWD												Offset Well Error:	0.0 ft
Reference		Offset		Semi Major Axis			Distance						Warning
Measured Depth (ft)	Vertical Depth (ft)	Measured Depth (ft)	Vertical Depth (ft)	Reference (ft)	Offset (ft)	Highside Toolface (°)	Offset Wellbore Centre +N/-S (ft)	+E/-W (ft)	Between Centres (ft)	Between Ellipses (ft)	Minimum Separation (ft)	Separation Factor	
5,000.0	4,862.7	4,988.5	4,792.7	23.7	28.1	-20.89	-512.4	1,164.8	238.0	206.7	31.30	7.605	
5,100.0	4,959.2	5,088.4	4,887.6	24.3	28.7	-20.83	-525.3	1,192.9	243.1	211.1	31.99	7.598	
5,200.0	5,055.6	5,188.2	4,982.6	24.8	29.4	-20.77	-538.2	1,221.0	248.1	215.4	32.68	7.592	
5,300.0	5,152.1	5,288.1	5,077.6	25.4	30.1	-20.72	-551.1	1,249.1	253.1	219.7	33.37	7.586	
5,400.0	5,248.6	5,388.0	5,172.6	26.0	30.7	-20.67	-564.0	1,277.1	258.1	224.1	34.05	7.580	
5,500.0	5,345.1	5,487.9	5,267.5	26.5	31.4	-20.62	-576.9	1,305.2	263.2	228.4	34.74	7.575	
5,600.0	5,441.5	5,587.7	5,362.5	27.1	32.0	-20.57	-589.8	1,333.3	268.2	232.8	35.43	7.569	
5,700.0	5,538.0	5,687.6	5,457.5	27.7	32.7	-20.53	-602.7	1,361.4	273.2	237.1	36.12	7.564	
5,800.0	5,634.5	5,787.5	5,552.4	28.3	33.4	-20.48	-615.6	1,389.5	278.3	241.4	36.81	7.560	
5,900.0	5,730.9	5,887.4	5,647.4	28.8	34.0	-20.44	-628.5	1,417.6	283.3	245.8	37.50	7.555	
6,000.0	5,827.4	5,987.2	5,742.4	29.4	34.7	-20.40	-641.4	1,445.7	288.3	250.1	38.18	7.550	
6,100.0	5,923.9	6,087.1	5,837.3	30.0	35.4	-20.36	-654.3	1,473.8	293.3	254.5	38.87	7.546	
6,200.0	6,020.4	6,187.0	5,932.3	30.5	36.0	-20.32	-667.2	1,501.9	298.4	258.8	39.56	7.542	
6,300.0	6,116.8	6,286.9	6,027.3	31.1	36.7	-20.28	-680.1	1,529.9	303.4	263.1	40.25	7.538	
6,400.0	6,213.3	6,388.2	6,123.7	31.7	37.3	-20.37	-692.5	1,558.5	308.4	267.4	40.99	7.523	
6,500.0	6,309.8	6,491.5	6,222.7	32.2	37.8	-22.51	-693.9	1,587.7	312.4	269.7	42.61	7.330	
6,600.0	6,406.3	6,589.7	6,316.1	32.8	38.2	-26.95	-681.5	1,615.3	316.6	271.1	45.43	6.968	
6,612.8	6,418.6	6,601.8	6,327.4	32.9	38.2	-27.65	-679.0	1,618.6	317.3	271.4	45.88	6.916	
6,650.0	6,454.6	6,636.3	6,359.6	33.1	38.3	-19.31	-671.0	1,628.1	319.6	272.3	47.25	6.765	
6,700.0	6,503.1	6,681.9	6,401.4	33.3	38.5	-6.11	-657.8	1,640.4	323.4	274.4	49.01	6.600	
6,750.0	6,551.7	6,726.6	6,441.6	33.5	38.6	7.22	-642.3	1,652.3	328.0	277.4	50.63	6.478	
6,800.0	6,600.0	6,770.5	6,480.2	33.6	38.6	18.43	-624.5	1,663.6	333.1	281.1	52.05	6.400	
6,850.0	6,647.9	6,813.7	6,517.0	33.7	38.7	26.70	-604.6	1,674.4	338.8	285.6	53.24	6.364	
6,900.0	6,695.1	6,856.3	6,552.0	33.8	38.8	32.38	-582.8	1,684.7	344.9	290.7	54.15	6.369	
6,950.0	6,741.3	6,900.0	6,586.7	33.9	38.8	36.07	-558.2	1,694.9	351.3	296.5	54.79	6.411	
7,000.0	6,786.4	6,939.7	6,616.8	34.0	38.8	38.57	-534.0	1,703.8	357.8	302.8	55.06	6.499	
7,050.0	6,830.1	6,980.6	6,646.5	34.0	38.8	40.09	-507.2	1,712.5	364.5	309.5	55.05	6.621	
7,100.0	6,872.2	7,021.0	6,674.4	34.0	38.8	40.99	-479.1	1,720.6	371.2	316.4	54.74	6.781	
7,150.0	6,912.5	7,061.1	6,700.5	34.0	38.8	41.48	-449.6	1,728.3	377.8	323.6	54.15	6.977	
7,200.0	6,950.8	7,100.0	6,724.3	34.0	38.8	41.71	-419.6	1,735.2	384.2	330.9	53.29	7.210	
7,250.0	6,986.9	7,140.1	6,747.1	34.0	38.8	41.71	-387.4	1,741.9	390.4	338.2	52.22	7.477	
7,300.0	7,020.7	7,179.1	6,767.6	34.0	38.7	41.61	-354.7	1,747.9	396.4	345.4	50.95	7.780	
7,350.0	7,052.0	7,217.9	6,786.3	33.9	38.7	41.44	-321.2	1,753.3	401.9	352.4	49.54	8.113	
7,400.0	7,080.6	7,256.4	6,803.0	33.8	38.6	41.22	-286.9	1,758.2	407.1	359.1	48.04	8.475	
7,450.0	7,106.4	7,300.0	6,819.9	33.8	38.6	40.91	-247.0	1,763.1	411.9	365.4	46.49	8.860	
7,500.0	7,129.2	7,332.8	6,831.0	33.7	38.5	40.75	-216.3	1,766.3	416.1	371.1	44.98	9.249	
7,550.0	7,149.0	7,370.8	6,842.2	33.6	38.5	40.53	-180.2	1,769.5	419.8	376.2	43.55	9.638	
7,600.0	7,165.7	7,408.6	6,851.5	33.5	38.4	40.33	-143.6	1,772.1	422.9	380.6	42.28	10.003	
7,650.0	7,179.2	7,450.0	6,859.5	33.4	38.4	40.13	-103.0	1,774.4	425.5	384.3	41.22	10.322	
7,700.0	7,189.3	7,483.9	6,864.4	33.3	38.3	40.02	-69.5	1,775.8	427.5	387.0	40.45	10.569	
7,750.0	7,196.1	7,521.5	6,868.1	33.3	38.3	39.92	-32.1	1,776.8	428.9	388.9	39.99	10.724	
7,800.0	7,199.6	7,559.0	6,869.8	33.2	38.2	39.85	5.4	1,777.2	429.6	389.7	39.89	10.770	
7,825.7	7,200.0	7,579.3	6,870.0	33.1	38.2	39.84	25.7	1,777.2	429.7	389.8	39.99	10.747	
7,900.0	7,200.0	7,653.6	6,870.0	33.0	38.1	39.84	100.0	1,777.0	429.7	389.0	40.80	10.533	
8,000.0	7,200.0	7,753.6	6,870.0	33.0	38.0	39.84	200.0	1,776.8	429.7	387.8	41.98	10.236	
8,100.0	7,200.0	7,853.6	6,870.0	33.0	38.0	39.84	300.0	1,776.5	429.7	386.4	43.30	9.924	
8,200.0	7,200.0	7,953.6	6,870.0	33.1	38.0	39.84	400.0	1,776.3	429.7	385.0	44.75	9.603	
8,300.0	7,200.0	8,053.6	6,870.0	33.3	38.1	39.84	500.0	1,776.0	429.7	383.4	46.31	9.280	
8,400.0	7,200.0	8,153.6	6,870.0	33.7	38.4	39.84	600.0	1,775.8	429.7	381.8	47.97	8.958	
8,500.0	7,200.0	8,253.6	6,870.0	34.2	38.7	39.84	700.0	1,775.5	429.7	380.0	49.73	8.642	
8,577.6	7,200.0	8,331.2	6,870.0	34.7	39.0	39.84	777.5	1,775.4	429.7	378.6	51.15	8.402	
8,600.0	7,200.0	8,353.6	6,870.0	34.9	39.1	39.84	800.0	1,775.3	429.7	378.2	51.56	8.335	

CC - Min centre to center distance or convergent point, SF - min separation factor, ES - min ellipse separation

SRC Evans East Pad Sec.26-T5N-R66W - SRC Evans 43-26-23-14NHZ - Wellbore #1 - Plan #1 (10-27)													Offset Site Error:	0.0 ft
Survey Program: 0-MWD													Offset Well Error:	0.0 ft
Reference		Offset		Semi Major Axis			Distance							
Measured Depth	Vertical Depth	Measured Depth	Vertical Depth	Reference	Offset	Highside Toolface	Offset Wellbore Centre		Between Centres	Between Ellipses	Minimum Separation	Separation Factor	Warning	
(ft)	(ft)	(ft)	(ft)	(ft)	(ft)	(°)	+N/-S (ft)	+E/-W (ft)	(ft)	(ft)	(ft)			
8,700.0	7,200.0	8,453.6	6,870.0	35.7	39.7	39.84	900.0	1,775.1	429.7	376.3	53.47	8.037		
8,800.0	7,200.0	8,553.6	6,870.0	36.7	40.3	39.84	1,000.0	1,774.8	429.7	374.3	55.45	7.750		
8,900.0	7,200.0	8,653.6	6,870.0	37.7	41.1	39.84	1,100.0	1,774.6	429.7	372.3	57.49	7.475		
9,000.0	7,200.0	8,753.6	6,870.0	38.9	42.0	39.84	1,200.0	1,774.3	429.7	370.2	59.58	7.213		
9,100.0	7,200.0	8,853.6	6,870.0	40.1	43.0	39.84	1,300.0	1,774.1	429.7	368.0	61.72	6.963		
9,200.0	7,200.0	8,953.6	6,870.0	41.5	44.2	39.84	1,400.0	1,773.8	429.7	365.9	63.90	6.725		
9,300.0	7,200.0	9,053.6	6,870.0	42.8	45.3	39.84	1,500.0	1,773.6	429.7	363.6	66.12	6.499		
9,400.0	7,200.0	9,153.6	6,870.0	44.3	46.6	39.84	1,600.0	1,773.3	429.7	361.4	68.38	6.285		
9,500.0	7,200.0	9,253.6	6,870.0	45.8	47.9	39.84	1,700.0	1,773.1	429.7	359.1	70.67	6.081		
9,600.0	7,200.0	9,353.6	6,870.0	47.3	49.3	39.84	1,800.0	1,772.9	429.7	356.8	72.98	5.888		
9,700.0	7,200.0	9,453.6	6,870.0	48.8	50.7	39.84	1,900.0	1,772.6	429.7	354.4	75.33	5.705		
9,800.0	7,200.0	9,553.6	6,870.0	50.4	52.2	39.84	2,000.0	1,772.4	429.7	352.1	77.69	5.531		
9,900.0	7,200.0	9,653.6	6,870.0	52.0	53.7	39.84	2,100.0	1,772.1	429.7	349.7	80.08	5.366		
10,000.0	7,200.0	9,753.6	6,870.0	53.6	55.2	39.84	2,200.0	1,771.9	429.7	347.3	82.49	5.210		
10,047.3	7,200.0	9,800.9	6,870.0	54.4	56.0	39.84	2,247.2	1,771.8	429.7	346.1	83.63	5.138		
10,100.0	7,200.0	9,853.6	6,870.0	55.3	56.8	39.84	2,300.0	1,771.6	429.7	344.8	84.92	5.061		
10,200.0	7,200.0	9,953.6	6,870.0	56.9	58.4	39.84	2,400.0	1,771.4	429.7	342.4	87.36	4.919		
10,300.0	7,200.0	10,053.6	6,870.0	58.6	60.0	39.84	2,500.0	1,771.1	429.7	339.9	89.82	4.785		
10,400.0	7,200.0	10,153.6	6,870.0	60.3	61.6	39.84	2,600.0	1,770.9	429.7	337.5	92.29	4.657		
10,500.0	7,200.0	10,253.6	6,870.0	62.0	63.3	39.84	2,700.0	1,770.7	429.7	335.0	94.77	4.534		
10,600.0	7,200.0	10,353.6	6,870.0	63.7	64.9	39.84	2,800.0	1,770.4	429.7	332.5	97.27	4.418		
10,700.0	7,200.0	10,453.6	6,870.0	65.4	66.6	39.84	2,900.0	1,770.2	429.7	330.0	99.78	4.307		
10,800.0	7,200.0	10,553.6	6,870.0	67.2	68.3	39.84	3,000.0	1,769.9	429.7	327.5	102.30	4.201		
10,900.0	7,200.0	10,653.6	6,870.0	68.9	70.0	39.84	3,100.0	1,769.7	429.7	324.9	104.83	4.100		
11,000.0	7,200.0	10,753.6	6,870.0	70.7	71.7	39.84	3,200.0	1,769.4	429.7	322.4	107.36	4.003		
11,100.0	7,200.0	10,853.6	6,870.0	72.4	73.5	39.84	3,300.0	1,769.2	429.7	319.8	109.91	3.910		
11,200.0	7,200.0	10,953.6	6,870.0	74.2	75.2	39.84	3,400.0	1,768.9	429.7	317.3	112.46	3.821		
11,300.0	7,200.0	11,053.6	6,870.0	76.0	76.9	39.84	3,500.0	1,768.7	429.7	314.7	115.02	3.736		
11,400.0	7,200.0	11,153.6	6,870.0	77.8	78.7	39.84	3,600.0	1,768.5	429.7	312.2	117.59	3.655		
11,500.0	7,200.0	11,253.6	6,870.0	79.6	80.5	39.84	3,700.0	1,768.2	429.7	309.6	120.16	3.576		
11,568.9	7,200.0	11,322.5	6,870.0	80.8	81.7	39.84	3,768.8	1,768.0	429.7	307.8	121.94	3.524		
11,600.0	7,200.0	11,353.6	6,870.0	81.4	82.2	39.84	3,800.0	1,768.0	429.7	307.0	122.74	3.501		
11,700.0	7,200.0	11,453.6	6,870.0	83.2	84.0	39.84	3,900.0	1,767.7	429.7	304.4	125.32	3.429		
11,800.0	7,200.0	11,553.6	6,870.0	85.0	85.8	39.84	4,000.0	1,767.5	429.7	301.8	127.91	3.360		
11,900.0	7,200.0	11,653.6	6,870.0	86.8	87.6	39.84	4,100.0	1,767.2	429.7	299.2	130.51	3.293		
12,000.0	7,200.0	11,753.6	6,870.0	88.6	89.4	39.84	4,200.0	1,767.0	429.7	296.6	133.10	3.229		
12,100.0	7,200.0	11,853.6	6,870.0	90.4	91.2	39.84	4,300.0	1,766.7	429.7	294.0	135.71	3.167		
12,200.0	7,200.0	11,953.6	6,870.0	92.3	93.0	39.84	4,400.0	1,766.5	429.7	291.4	138.31	3.107		
12,300.0	7,200.0	12,053.6	6,870.0	94.1	94.8	39.84	4,499.9	1,766.3	429.7	288.8	140.92	3.049		
12,400.0	7,200.0	12,153.6	6,870.0	95.9	96.6	39.84	4,599.9	1,766.0	429.7	286.2	143.54	2.994		
12,500.0	7,200.0	12,253.6	6,870.0	97.8	98.4	39.84	4,699.9	1,765.8	429.7	283.6	146.16	2.940		
12,600.0	7,200.0	12,353.6	6,870.0	99.6	100.2	39.84	4,799.9	1,765.5	429.7	281.0	148.78	2.889		
12,700.0	7,200.0	12,453.6	6,870.0	101.4	102.0	39.84	4,899.9	1,765.3	429.7	278.3	151.40	2.838		
12,800.0	7,200.0	12,553.6	6,870.0	103.3	103.9	39.84	4,999.9	1,765.0	429.7	275.7	154.03	2.790		
12,900.0	7,200.0	12,653.6	6,870.0	105.1	105.7	39.84	5,099.9	1,764.8	429.7	273.1	156.66	2.743		
13,000.0	7,200.0	12,753.6	6,870.0	107.0	107.5	39.84	5,199.9	1,764.5	429.7	270.5	159.29	2.698		
13,063.6	7,200.0	12,817.2	6,870.0	108.2	108.7	39.84	5,263.6	1,764.4	429.7	268.8	160.97	2.670		
13,100.0	7,200.0	12,853.6	6,870.0	108.8	109.4	39.84	5,299.9	1,764.3	429.7	267.8	161.93	2.654		
13,200.0	7,200.0	12,953.6	6,870.0	110.7	111.2	39.84	5,399.9	1,764.1	429.7	265.2	164.56	2.611		
13,300.0	7,200.0	13,053.6	6,870.0	112.5	113.1	39.84	5,499.9	1,763.8	429.7	262.5	167.20	2.570		
13,400.0	7,200.0	13,153.6	6,870.0	114.4	114.9	39.84	5,599.9	1,763.6	429.7	259.9	169.85	2.530		
13,500.0	7,200.0	13,253.6	6,870.0	116.3	116.8	39.84	5,699.9	1,763.3	429.7	257.3	172.49	2.491		



<b>Company:</b>	Synergy Resources	<b>Local Co-ordinate Reference:</b>	Well SRC Evans D-26-23-14CHZ
<b>Project:</b>	SEC.26-T5N-R66W	<b>TVD Reference:</b>	WELL @ 4769.0ft (RKB - 15')
<b>Reference Site:</b>	SRC Evans East Pad Sec.26-T5N-R66W	<b>MD Reference:</b>	WELL @ 4769.0ft (RKB - 15')
<b>Site Error:</b>	0.0ft	<b>North Reference:</b>	True
<b>Reference Well:</b>	SRC Evans D-26-23-14CHZ	<b>Survey Calculation Method:</b>	Minimum Curvature
<b>Well Error:</b>	0.0ft	<b>Output errors are at</b>	2.00 sigma
<b>Reference Wellbore</b>	Wellbore #1	<b>Database:</b>	Landmark
<b>Reference Design:</b>	Plan #1 (10-27-14)	<b>Offset TVD Reference:</b>	Offset Datum

Offset Design													Offset Site Error:	0.0 ft
Survey Program: 0-MWD													Offset Well Error:	0.0 ft
Reference		Offset		Semi Major Axis			Distance							Warning
Measured Depth (ft)	Vertical Depth (ft)	Measured Depth (ft)	Vertical Depth (ft)	Reference (ft)	Offset (ft)	Highside Toolface (°)	Offset Wellbore Centre +N/-S (ft)	+E/-W (ft)	Between Centres (ft)	Between Ellipses (ft)	Minimum Separation (ft)	Separation Factor		
13,600.0	7,200.0	13,353.6	6,870.0	118.1	118.6	39.84	5,799.9	1,763.1	429.7	254.6	175.14	2.454		
13,700.0	7,200.0	13,453.6	6,870.0	120.0	120.5	39.84	5,899.9	1,762.8	429.7	252.0	177.78	2.417		
13,800.0	7,200.0	13,553.6	6,870.0	121.9	122.3	39.84	5,999.9	1,762.6	429.7	249.3	180.43	2.382		
13,900.0	7,200.0	13,653.6	6,870.0	123.7	124.2	39.84	6,099.9	1,762.3	429.7	246.7	183.09	2.347		
14,000.0	7,200.0	13,753.6	6,870.0	125.6	126.0	39.84	6,199.9	1,762.1	429.7	244.0	185.74	2.314		
14,100.0	7,200.0	13,853.6	6,870.0	127.5	127.9	39.84	6,299.9	1,761.9	429.7	241.4	188.39	2.281		
14,200.0	7,200.0	13,953.6	6,870.0	129.3	129.7	39.84	6,399.9	1,761.6	429.7	238.7	191.05	2.249		
14,300.0	7,200.0	14,053.6	6,870.0	131.2	131.6	39.84	6,499.9	1,761.4	429.7	236.0	193.71	2.219		
14,400.0	7,200.0	14,153.6	6,870.0	133.1	133.5	39.84	6,599.9	1,761.1	429.7	233.4	196.37	2.189		
14,500.0	7,200.0	14,253.6	6,870.0	135.0	135.3	39.84	6,699.9	1,760.9	429.7	230.7	199.03	2.159		
14,575.8	7,200.0	14,329.4	6,870.0	136.4	136.7	39.84	6,775.7	1,760.7	429.7	228.7	201.04	2.138		
14,600.0	7,200.0	14,353.6	6,870.0	136.8	137.2	39.84	6,799.9	1,760.6	429.7	228.1	201.69	2.131		
14,700.0	7,200.0	14,453.6	6,870.0	138.7	139.1	39.84	6,899.9	1,760.4	429.7	225.4	204.35	2.103		
14,800.0	7,200.0	14,553.6	6,870.0	140.6	140.9	39.84	6,999.9	1,760.1	429.7	222.7	207.02	2.076		
14,900.0	7,200.0	14,653.6	6,870.0	142.5	142.8	39.84	7,099.9	1,759.9	429.7	220.1	209.68	2.050		
15,000.0	7,200.0	14,753.6	6,870.0	144.4	144.7	39.84	7,199.9	1,759.7	429.7	217.4	212.35	2.024		
15,100.0	7,200.0	14,853.6	6,870.0	146.2	146.6	39.84	7,299.9	1,759.4	429.7	214.7	215.01	1.999		
15,200.0	7,200.0	14,953.6	6,870.0	148.1	148.4	39.84	7,399.9	1,759.2	429.7	212.1	217.68	1.974		
15,300.0	7,200.0	15,053.6	6,870.0	150.0	150.3	39.84	7,499.9	1,758.9	429.7	209.4	220.35	1.950		
15,400.0	7,200.0	15,153.6	6,870.0	151.9	152.2	39.84	7,599.9	1,758.7	429.7	206.7	223.02	1.927		
15,500.0	7,200.0	15,253.6	6,870.0	153.8	154.1	39.84	7,699.9	1,758.4	429.7	204.1	225.69	1.904		
15,600.0	7,200.0	15,353.6	6,870.0	155.7	155.9	39.84	7,799.9	1,758.2	429.7	201.4	228.37	1.882		
15,700.0	7,200.0	15,453.6	6,870.0	157.5	157.8	39.84	7,899.9	1,757.9	429.7	198.7	231.04	1.860		
15,800.0	7,200.0	15,553.6	6,870.0	159.4	159.7	39.84	7,999.9	1,757.7	429.7	196.0	233.71	1.839		
15,900.0	7,200.0	15,653.6	6,870.0	161.3	161.6	39.84	8,099.9	1,757.5	429.7	193.4	236.39	1.818		
16,000.0	7,200.0	15,753.6	6,870.0	163.2	163.5	39.84	8,199.9	1,757.2	429.7	190.7	239.06	1.798		
16,063.6	7,200.0	15,817.2	6,870.0	164.4	164.7	39.84	8,263.6	1,757.1	429.7	189.0	240.77	1.785		
16,100.0	7,200.0	15,853.6	6,870.0	165.1	165.4	39.84	8,299.9	1,757.0	429.7	188.0	241.74	1.778		
16,200.0	7,200.0	15,953.6	6,870.0	167.0	167.2	39.84	8,399.9	1,756.7	429.7	185.3	244.42	1.758		
16,300.0	7,200.0	16,053.6	6,870.0	168.9	169.1	39.84	8,499.9	1,756.5	429.7	182.7	247.09	1.739		
16,400.0	7,200.0	16,153.6	6,870.0	170.8	171.0	39.84	8,599.9	1,756.2	429.7	180.0	249.77	1.721		
16,500.0	7,200.0	16,253.6	6,870.0	172.7	172.9	39.84	8,699.9	1,756.0	429.7	177.3	252.45	1.702		
16,600.0	7,200.0	16,353.6	6,870.0	174.6	174.8	39.84	8,799.9	1,755.8	429.7	174.6	255.13	1.684		
16,700.0	7,200.0	16,453.6	6,870.0	176.5	176.7	39.84	8,899.9	1,755.5	429.7	171.9	257.81	1.667		
16,800.0	7,200.0	16,553.6	6,870.0	178.4	178.6	39.84	8,999.9	1,755.3	429.7	169.3	260.49	1.650		
16,900.0	7,200.0	16,653.6	6,870.0	180.3	180.5	39.84	9,099.9	1,755.0	429.7	166.6	263.17	1.633		
17,000.0	7,200.0	16,753.6	6,870.0	182.2	182.3	39.84	9,199.9	1,754.8	429.7	163.9	265.85	1.616		
17,100.0	7,200.0	16,853.6	6,870.0	184.0	184.2	39.84	9,299.9	1,754.5	429.7	161.2	268.54	1.600		
17,114.9	7,200.0	16,857.4	6,870.0	184.3	184.3	39.84	9,303.7	1,754.5	429.9	161.1	268.79	1.599 SF		

<b>Company:</b>	Synergy Resources	<b>Local Co-ordinate Reference:</b>	Well SRC Evans D-26-23-14CHZ
<b>Project:</b>	SEC.26-T5N-R66W	<b>TVD Reference:</b>	WELL @ 4769.0ft (RKB - 15')
<b>Reference Site:</b>	SRC Evans East Pad Sec.26-T5N-R66W	<b>MD Reference:</b>	WELL @ 4769.0ft (RKB - 15')
<b>Site Error:</b>	0.0ft	<b>North Reference:</b>	True
<b>Reference Well:</b>	SRC Evans D-26-23-14CHZ	<b>Survey Calculation Method:</b>	Minimum Curvature
<b>Well Error:</b>	0.0ft	<b>Output errors are at</b>	2.00 sigma
<b>Reference Wellbore</b>	Wellbore #1	<b>Database:</b>	Landmark
<b>Reference Design:</b>	Plan #1 (10-27-14)	<b>Offset TVD Reference:</b>	Offset Datum

Offset Design													Offset Site Error:	0.0 ft
Survey Program: 0-MWD													Offset Well Error:	0.0 ft
Reference		Offset		Semi Major Axis			Distance							Warning
Measured Depth (ft)	Vertical Depth (ft)	Measured Depth (ft)	Vertical Depth (ft)	Reference (ft)	Offset (ft)	Highside Toolface (°)	Offset Wellbore Centre +N/-S (ft)	+E/-W (ft)	Between Centres (ft)	Between Ellipses (ft)	Minimum Separation (ft)	Separation Factor		
0.0	0.0	0.0	0.0	0.0	0.0	180.00	-22.6	0.0	22.6					
100.0	100.0	99.0	99.0	0.1	0.1	180.00	-22.6	0.0	22.6	22.4	0.22	101.015		
200.0	200.0	199.0	199.0	0.3	0.3	180.00	-22.6	0.0	22.6	21.9	0.67	33.616		
300.0	300.0	299.0	299.0	0.6	0.6	180.00	-22.6	0.0	22.6	21.5	1.12	20.142		
400.0	400.0	399.0	399.0	0.8	0.8	180.00	-22.6	0.0	22.6	21.0	1.57	14.379		
500.0	500.0	499.0	499.0	1.0	1.0	180.00	-22.6	0.0	22.6	20.6	2.02	11.180		
600.0	600.0	599.0	599.0	1.2	1.2	180.00	-22.6	0.0	22.6	20.1	2.47	9.146		
700.0	700.0	699.0	699.0	1.4	1.5	66.51	-22.6	0.0	21.8	18.9	2.90	7.528		
800.0	799.8	798.8	798.8	1.6	1.7	80.18	-22.6	0.0	20.3	17.0	3.32	6.114		
844.8	844.5	843.4	843.4	1.7	1.8	89.05	-22.8	0.3	20.1	16.5	3.51	5.708 CC, ES		
900.0	899.5	898.5	898.5	1.9	1.9	99.96	-23.5	1.4	20.5	16.7	3.75	5.461		
1,000.0	998.7	998.5	998.3	2.1	2.1	117.19	-26.2	5.8	23.1	18.9	4.18	5.538		
1,100.0	1,097.5	1,098.7	1,098.1	2.4	2.3	129.64	-30.8	13.2	27.6	23.0	4.62	5.970		
1,200.0	1,195.6	1,199.1	1,197.8	2.8	2.5	137.99	-37.3	23.5	33.2	28.1	5.09	6.519		
1,300.0	1,293.1	1,299.8	1,297.2	3.2	2.8	143.52	-45.6	36.9	39.4	33.8	5.58	7.059		
1,363.2	1,354.2	1,363.5	1,359.9	3.4	3.0	146.03	-51.8	46.9	43.5	37.6	5.91	7.366		
1,400.0	1,389.7	1,400.7	1,396.3	3.6	3.1	147.09	-55.8	53.2	45.8	39.7	6.12	7.492		
1,500.0	1,486.2	1,502.0	1,495.0	4.1	3.5	147.90	-67.9	72.6	50.1	43.4	6.73	7.442		
1,600.0	1,582.7	1,602.1	1,592.0	4.6	4.0	147.26	-80.9	93.4	52.7	45.3	7.42	7.107		
1,700.0	1,679.1	1,702.0	1,688.9	5.2	4.4	146.67	-93.9	114.3	55.3	47.2	8.13	6.802		
1,800.0	1,775.6	1,802.0	1,785.8	5.7	4.9	146.14	-106.9	135.1	57.9	49.1	8.88	6.528		
1,900.0	1,872.1	1,902.0	1,882.7	6.2	5.4	145.65	-119.9	155.9	60.6	50.9	9.64	6.283		
2,000.0	1,968.5	2,001.9	1,979.6	6.8	5.9	145.20	-132.9	176.8	63.2	52.8	10.42	6.064		
2,100.0	2,065.0	2,101.9	2,076.5	7.3	6.4	144.79	-145.9	197.6	65.8	54.6	11.22	5.869		
2,200.0	2,161.5	2,201.8	2,173.4	7.9	6.9	144.40	-159.0	218.5	68.5	56.4	12.02	5.694		
2,300.0	2,258.0	2,301.8	2,270.3	8.4	7.4	144.05	-172.0	239.3	71.1	58.3	12.84	5.537		
2,400.0	2,354.4	2,401.8	2,367.2	9.0	7.9	143.72	-185.0	260.1	73.7	60.1	13.67	5.396		
2,500.0	2,450.9	2,501.7	2,464.1	9.5	8.4	143.42	-198.0	281.0	76.4	61.9	14.50	5.268		
2,600.0	2,547.4	2,601.7	2,561.0	10.1	8.9	143.13	-211.0	301.8	79.0	63.7	15.34	5.151		
2,700.0	2,643.8	2,701.7	2,657.9	10.7	9.4	142.87	-224.0	322.6	81.7	65.5	16.19	5.046		
2,800.0	2,740.3	2,801.6	2,754.8	11.2	10.0	142.62	-237.0	343.5	84.3	67.3	17.04	4.949		
2,900.0	2,836.8	2,901.6	2,851.7	11.8	10.5	142.38	-250.0	364.3	87.0	69.1	17.89	4.860		
3,000.0	2,933.3	3,001.6	2,948.6	12.4	11.0	142.16	-263.0	385.1	89.6	70.9	18.75	4.779		
3,100.0	3,029.7	3,101.5	3,045.5	12.9	11.5	141.96	-276.0	406.0	92.3	72.6	19.61	4.704		
3,200.0	3,126.2	3,201.5	3,142.4	13.5	12.1	141.76	-289.0	426.8	94.9	74.4	20.48	4.634		
3,300.0	3,222.7	3,301.5	3,239.3	14.1	12.6	141.57	-302.0	447.6	97.6	76.2	21.35	4.570		
3,400.0	3,319.1	3,401.4	3,336.2	14.6	13.1	141.40	-315.0	468.5	100.2	78.0	22.22	4.510		
3,500.0	3,415.6	3,501.4	3,433.1	15.2	13.6	141.23	-328.0	489.3	102.9	79.8	23.10	4.454		
3,600.0	3,512.1	3,601.3	3,530.0	15.8	14.2	141.07	-341.0	510.1	105.5	81.6	23.97	4.402		
3,700.0	3,608.6	3,701.3	3,626.9	16.3	14.7	140.92	-354.0	531.0	108.2	83.3	24.85	4.354		
3,800.0	3,705.0	3,801.3	3,723.8	16.9	15.2	140.78	-367.0	551.8	110.8	85.1	25.73	4.308		
3,900.0	3,801.5	3,901.2	3,820.7	17.5	15.8	140.64	-380.1	572.6	113.5	86.9	26.61	4.265		
4,000.0	3,898.0	4,001.2	3,917.6	18.0	16.3	140.51	-393.1	593.5	116.2	88.7	27.49	4.225		
4,100.0	3,994.5	4,101.2	4,014.5	18.6	16.8	140.39	-406.1	614.3	118.8	90.4	28.38	4.187		
4,200.0	4,090.9	4,201.1	4,111.4	19.2	17.4	140.27	-419.1	635.2	121.5	92.2	29.26	4.151		
4,300.0	4,187.4	4,301.1	4,208.3	19.7	17.9	140.15	-432.1	656.0	124.1	94.0	30.15	4.117		
4,400.0	4,283.9	4,401.1	4,305.2	20.3	18.4	140.05	-445.1	676.8	126.8	95.8	31.04	4.085		
4,500.0	4,380.3	4,501.0	4,402.1	20.9	19.0	139.94	-458.1	697.7	129.5	97.5	31.93	4.055		
4,600.0	4,476.8	4,601.0	4,499.0	21.4	19.5	139.84	-471.1	718.5	132.1	99.3	32.82	4.026		
4,700.0	4,573.3	4,701.0	4,595.9	22.0	20.0	139.74	-484.1	739.3	134.8	101.1	33.71	3.998		
4,800.0	4,669.8	4,800.9	4,692.8	22.6	20.6	139.65	-497.1	760.2	137.4	102.8	34.60	3.972		
4,900.0	4,766.2	4,900.9	4,789.7	23.1	21.1	139.56	-510.1	781.0	140.1	104.6	35.49	3.947		

CC - Min centre to center distance or convergent point, SF - min separation factor, ES - min ellipse separation

<b>Company:</b>	Synergy Resources	<b>Local Co-ordinate Reference:</b>	Well SRC Evans D-26-23-14CHZ
<b>Project:</b>	SEC.26-T5N-R66W	<b>TVD Reference:</b>	WELL @ 4769.0ft (RKB - 15')
<b>Reference Site:</b>	SRC Evans East Pad Sec.26-T5N-R66W	<b>MD Reference:</b>	WELL @ 4769.0ft (RKB - 15')
<b>Site Error:</b>	0.0ft	<b>North Reference:</b>	True
<b>Reference Well:</b>	SRC Evans D-26-23-14CHZ	<b>Survey Calculation Method:</b>	Minimum Curvature
<b>Well Error:</b>	0.0ft	<b>Output errors are at</b>	2.00 sigma
<b>Reference Wellbore</b>	Wellbore #1	<b>Database:</b>	Landmark
<b>Reference Design:</b>	Plan #1 (10-27-14)	<b>Offset TVD Reference:</b>	Offset Datum

Offset Design													Offset Site Error:	0.0 ft
Survey Program: 0-MWD													Offset Well Error:	0.0 ft
Reference		Offset		Semi Major Axis			Distance							Warning
Measured Depth (ft)	Vertical Depth (ft)	Measured Depth (ft)	Vertical Depth (ft)	Reference (ft)	Offset (ft)	Highside Toolface (°)	Offset Wellbore Centre +N/-S (ft)	+E/-W (ft)	Between Centres (ft)	Between Ellipses (ft)	Minimum Separation (ft)	Separation Factor		
5,000.0	4,862.7	5,000.8	4,886.6	23.7	21.6	139.48	-523.1	801.8	142.8	106.4	36.39	3.924		
5,100.0	4,959.2	5,100.8	4,983.5	24.3	22.2	139.39	-536.1	822.7	145.4	108.2	37.28	3.901		
5,200.0	5,055.6	5,200.8	5,080.4	24.8	22.7	139.31	-549.1	843.5	148.1	109.9	38.18	3.879		
5,300.0	5,152.1	5,300.7	5,177.3	25.4	23.2	139.24	-562.1	864.3	150.8	111.7	39.07	3.859		
5,400.0	5,248.6	5,400.7	5,274.2	26.0	23.8	139.16	-575.1	885.2	153.4	113.5	39.97	3.839		
5,500.0	5,345.1	5,500.7	5,371.1	26.5	24.3	139.09	-588.1	906.0	156.1	115.2	40.86	3.820		
5,600.0	5,441.5	5,600.6	5,468.0	27.1	24.8	139.02	-601.2	926.8	158.8	117.0	41.76	3.802		
5,700.0	5,538.0	5,700.6	5,564.9	27.7	25.4	138.95	-614.2	947.7	161.4	118.8	42.66	3.784		
5,800.0	5,634.5	5,800.6	5,661.8	28.3	25.9	138.89	-627.2	968.5	164.1	120.5	43.55	3.767		
5,900.0	5,730.9	5,900.5	5,758.7	28.8	26.4	138.83	-640.2	989.3	166.7	122.3	44.45	3.751		
6,000.0	5,827.4	6,000.5	5,855.6	29.4	27.0	138.77	-653.2	1,010.2	169.4	124.1	45.35	3.736		
6,100.0	5,923.9	6,100.5	5,952.5	30.0	27.5	138.71	-666.2	1,031.0	172.1	125.8	46.25	3.721		
6,200.0	6,020.4	6,200.4	6,049.4	30.5	28.0	138.65	-679.2	1,051.9	174.7	127.6	47.15	3.706		
6,300.0	6,116.8	6,304.7	6,150.8	31.1	28.5	139.81	-688.9	1,073.7	176.5	129.1	47.43	3.722		
6,400.0	6,213.3	6,408.0	6,251.6	31.7	28.8	145.47	-684.2	1,095.3	176.0	130.6	45.41	3.876		
6,429.2	6,241.5	6,437.0	6,279.7	31.8	28.9	147.92	-680.2	1,101.3	175.9	131.5	44.40	3.961		
6,500.0	6,309.8	6,504.5	6,344.3	32.2	29.0	154.98	-666.5	1,115.1	177.1	135.6	41.45	4.273		
6,600.0	6,406.3	6,591.8	6,425.4	32.8	29.1	166.49	-639.6	1,132.5	186.0	148.8	37.29	4.990		
6,612.8	6,418.6	6,602.2	6,435.0	32.9	29.1	167.99	-635.7	1,134.5	188.1	151.2	36.87	5.101		
6,650.0	6,454.6	6,632.1	6,461.7	33.1	29.1	-176.78	-623.8	1,140.2	195.0	159.2	35.86	5.438		
6,700.0	6,503.1	6,671.4	6,496.2	33.3	29.1	-154.90	-606.4	1,147.6	206.2	170.9	35.26	5.849		
6,750.0	6,551.7	6,710.0	6,529.1	33.5	29.1	-133.58	-587.5	1,154.6	219.0	183.7	35.36	6.195		
6,800.0	6,600.0	6,750.0	6,562.1	33.6	29.1	-114.90	-566.0	1,161.6	233.0	197.1	35.90	6.489		
6,850.0	6,647.9	6,785.0	6,589.9	33.7	29.1	-100.25	-545.7	1,167.6	247.6	211.1	36.53	6.777		
6,900.0	6,695.1	6,821.6	6,618.0	33.8	29.0	-88.64	-522.9	1,173.6	262.6	225.4	37.13	7.071		
6,950.0	6,741.3	6,857.7	6,644.6	33.9	29.0	-79.54	-499.1	1,179.2	277.6	240.1	37.55	7.394		
7,000.0	6,786.4	6,893.4	6,669.6	34.0	28.9	-72.32	-474.3	1,184.5	292.5	254.8	37.71	7.758		
7,050.0	6,830.1	6,928.6	6,693.1	34.0	28.9	-66.49	-448.5	1,189.5	307.1	269.5	37.59	8.171		
7,100.0	6,872.2	6,963.5	6,715.2	34.0	28.8	-61.73	-421.9	1,194.2	321.2	284.1	37.17	8.642		
7,150.0	6,912.5	7,000.0	6,736.8	34.0	28.8	-57.73	-392.9	1,198.7	334.8	298.3	36.50	9.171		
7,200.0	6,950.8	7,032.3	6,754.8	34.0	28.7	-54.49	-366.2	1,202.5	347.6	312.1	35.55	9.778		
7,250.0	6,986.9	7,066.3	6,772.4	34.0	28.6	-51.72	-337.4	1,206.2	359.7	325.3	34.40	10.457		
7,300.0	7,020.7	7,100.0	6,788.5	34.0	28.6	-49.39	-308.0	1,209.6	371.0	337.9	33.07	11.219		
7,350.0	7,052.0	7,133.7	6,803.2	33.9	28.5	-47.41	-277.9	1,212.7	381.3	349.7	31.61	12.063		
7,400.0	7,080.6	7,167.1	6,816.4	33.8	28.4	-45.74	-247.4	1,215.5	390.8	360.7	30.07	12.994		
7,450.0	7,106.4	7,200.0	6,828.1	33.8	28.4	-44.34	-216.7	1,217.9	399.2	370.7	28.51	14.003		
7,500.0	7,129.2	7,233.4	6,838.5	33.7	28.3	-43.17	-185.0	1,220.1	406.7	379.7	27.01	15.054		
7,550.0	7,149.0	7,266.4	6,847.3	33.6	28.2	-42.21	-153.3	1,221.9	413.1	387.5	25.64	16.110		
7,600.0	7,165.7	7,300.0	6,854.9	33.5	28.2	-41.43	-120.6	1,223.4	418.5	394.0	24.49	17.091		
7,650.0	7,179.2	7,332.1	6,860.7	33.4	28.1	-40.83	-89.1	1,224.6	422.8	399.1	23.64	17.882		
7,700.0	7,189.3	7,364.8	6,865.2	33.3	28.0	-40.39	-56.6	1,225.5	426.0	402.8	23.18	18.377		
7,750.0	7,196.1	7,400.0	6,868.4	33.3	28.0	-40.10	-21.6	1,226.1	428.1	404.9	23.16	18.485		
7,800.0	7,199.6	7,430.2	6,869.8	33.2	27.9	-39.97	8.6	1,226.3	429.1	405.5	23.59	18.186		
7,825.7	7,200.0	7,449.1	6,870.0	33.1	27.9	-39.95	27.4	1,226.3	429.2	405.2	23.99	17.887		
7,847.5	7,200.0	7,467.8	6,870.0	33.1	27.9	-39.95	46.2	1,226.3	429.2	405.1	24.11	17.804		
7,900.0	7,200.0	7,520.3	6,870.0	33.0	27.8	-39.95	98.6	1,226.1	429.2	404.8	24.41	17.581		
8,000.0	7,200.0	7,620.3	6,870.0	33.0	27.7	-39.95	198.6	1,225.9	429.2	404.0	25.17	17.054		
8,100.0	7,200.0	7,720.3	6,870.0	33.0	27.8	-39.95	298.6	1,225.6	429.2	403.0	26.18	16.393		
8,200.0	7,200.0	7,820.3	6,870.0	33.1	28.1	-39.95	398.6	1,225.4	429.2	401.8	27.43	15.648		
8,300.0	7,200.0	7,920.3	6,870.0	33.3	28.5	-39.95	498.6	1,225.1	429.2	400.3	28.87	14.864		
8,400.0	7,200.0	8,020.3	6,870.0	33.7	29.1	-39.95	598.6	1,224.9	429.2	398.7	30.49	14.075		
8,500.0	7,200.0	8,120.3	6,870.0	34.2	30.0	-39.95	698.6	1,224.7	429.2	396.9	32.26	13.304		

CC - Min centre to center distance or convergent point, SF - min separation factor, ES - min ellipse separation

<b>Company:</b>	Synergy Resources	<b>Local Co-ordinate Reference:</b>	Well SRC Evans D-26-23-14CHZ
<b>Project:</b>	SEC.26-T5N-R66W	<b>TVD Reference:</b>	WELL @ 4769.0ft (RKB - 15')
<b>Reference Site:</b>	SRC Evans East Pad Sec.26-T5N-R66W	<b>MD Reference:</b>	WELL @ 4769.0ft (RKB - 15')
<b>Site Error:</b>	0.0ft	<b>North Reference:</b>	True
<b>Reference Well:</b>	SRC Evans D-26-23-14CHZ	<b>Survey Calculation Method:</b>	Minimum Curvature
<b>Well Error:</b>	0.0ft	<b>Output errors are at</b>	2.00 sigma
<b>Reference Wellbore</b>	Wellbore #1	<b>Database:</b>	Landmark
<b>Reference Design:</b>	Plan #1 (10-27-14)	<b>Offset TVD Reference:</b>	Offset Datum

Offset Design													Offset Site Error:	0.0 ft
Survey Program: 0-MWD													Offset Well Error:	0.0 ft
Reference		Offset		Semi Major Axis			Distance						Warning	
Measured Depth (ft)	Vertical Depth (ft)	Measured Depth (ft)	Vertical Depth (ft)	Reference (ft)	Offset (ft)	Highside Toolface (°)	Offset Wellbore Centre +N/-S (ft)	+E/-W (ft)	Between Centres (ft)	Between Ellipses (ft)	Minimum Separation (ft)	Separation Factor		
8,589.1	7,200.0	8,209.4	6,870.0	34.8	30.9	-39.95	787.7	1,224.4	429.2	395.2	33.94	12.646		
8,600.0	7,200.0	8,220.3	6,870.0	34.9	31.0	-39.95	798.6	1,224.4	429.2	395.0	34.15	12.568		
8,700.0	7,200.0	8,320.3	6,870.0	35.7	32.1	-39.95	898.6	1,224.2	429.2	393.0	36.14	11.875		
8,800.0	7,200.0	8,420.3	6,870.0	36.7	33.4	-39.95	998.6	1,223.9	429.2	391.0	38.23	11.228		
8,900.0	7,200.0	8,520.3	6,870.0	37.7	34.7	-39.95	1,098.6	1,223.7	429.2	388.8	40.38	10.628		
9,000.0	7,200.0	8,620.3	6,870.0	38.9	36.1	-39.95	1,198.6	1,223.4	429.2	386.6	42.60	10.074		
9,100.0	7,200.0	8,720.3	6,870.0	40.1	37.5	-39.95	1,298.6	1,223.2	429.2	384.3	44.88	9.563		
9,200.0	7,200.0	8,820.3	6,870.0	41.5	39.0	-39.95	1,398.6	1,222.9	429.2	382.0	47.20	9.093		
9,300.0	7,200.0	8,920.3	6,870.0	42.8	40.6	-39.95	1,498.6	1,222.7	429.2	379.6	49.56	8.660		
9,400.0	7,200.0	9,020.3	6,870.0	44.3	42.1	-39.95	1,598.6	1,222.5	429.2	377.2	51.95	8.261		
9,500.0	7,200.0	9,120.3	6,870.0	45.8	43.7	-39.95	1,698.6	1,222.2	429.2	374.8	54.37	7.893		
9,600.0	7,200.0	9,220.3	6,870.0	47.3	45.3	-39.95	1,798.6	1,222.0	429.2	372.4	56.82	7.553		
9,700.0	7,200.0	9,320.3	6,870.0	48.8	47.0	-39.95	1,898.6	1,221.7	429.2	369.9	59.30	7.238		
9,800.0	7,200.0	9,420.3	6,870.0	50.4	48.6	-39.95	1,998.6	1,221.5	429.2	367.4	61.79	6.946		
9,900.0	7,200.0	9,520.3	6,870.0	52.0	50.3	-39.95	2,098.6	1,221.2	429.2	364.9	64.30	6.675		
10,000.0	7,200.0	9,620.3	6,870.0	53.6	52.0	-39.95	2,198.6	1,221.0	429.2	362.4	66.82	6.422		
10,089.5	7,200.0	9,709.8	6,870.0	55.1	53.5	-39.95	2,288.1	1,220.8	429.2	360.1	69.10	6.211		
10,100.0	7,200.0	9,720.3	6,870.0	55.3	53.7	-39.95	2,298.6	1,220.8	429.2	359.8	69.36	6.187		
10,200.0	7,200.0	9,820.3	6,870.0	56.9	55.4	-39.95	2,398.6	1,220.5	429.2	357.3	71.92	5.968		
10,300.0	7,200.0	9,920.3	6,870.0	58.6	57.2	-39.95	2,498.6	1,220.3	429.2	354.7	74.48	5.762		
10,400.0	7,200.0	10,020.3	6,870.0	60.3	58.9	-39.95	2,598.6	1,220.0	429.2	352.1	77.05	5.570		
10,500.0	7,200.0	10,120.3	6,870.0	62.0	60.7	-39.95	2,698.6	1,219.8	429.2	349.5	79.63	5.389		
10,600.0	7,200.0	10,220.3	6,870.0	63.7	62.4	-39.95	2,798.6	1,219.5	429.2	347.0	82.22	5.220		
10,700.0	7,200.0	10,320.3	6,870.0	65.4	64.2	-39.95	2,898.6	1,219.3	429.2	344.4	84.82	5.060		
10,800.0	7,200.0	10,420.3	6,870.0	67.2	66.0	-39.95	2,998.6	1,219.0	429.2	341.7	87.43	4.909		
10,900.0	7,200.0	10,520.3	6,870.0	68.9	67.8	-39.95	3,098.6	1,218.8	429.2	339.1	90.04	4.767		
11,000.0	7,200.0	10,620.3	6,870.0	70.7	69.6	-39.95	3,198.6	1,218.6	429.2	336.5	92.66	4.632		
11,100.0	7,200.0	10,720.3	6,870.0	72.4	71.4	-39.95	3,298.6	1,218.3	429.2	333.9	95.28	4.504		
11,200.0	7,200.0	10,820.3	6,870.0	74.2	73.2	-39.95	3,398.6	1,218.1	429.2	331.3	97.90	4.384		
11,300.0	7,200.0	10,920.3	6,870.0	76.0	75.0	-39.95	3,498.6	1,217.8	429.2	328.6	100.54	4.269		
11,400.0	7,200.0	11,020.3	6,870.0	77.8	76.8	-39.95	3,598.6	1,217.6	429.2	326.0	103.17	4.160		
11,500.0	7,200.0	11,120.3	6,870.0	79.6	78.6	-39.95	3,698.6	1,217.3	429.2	323.4	105.81	4.056		
11,589.1	7,200.0	11,209.3	6,870.0	81.2	80.3	-39.95	3,787.7	1,217.1	429.2	321.0	108.16	3.968		
11,600.0	7,200.0	11,220.3	6,870.0	81.4	80.5	-39.95	3,798.6	1,217.1	429.2	320.7	108.45	3.957		
11,700.0	7,200.0	11,320.3	6,870.0	83.2	82.3	-39.95	3,898.6	1,216.8	429.2	318.1	111.10	3.863		
11,800.0	7,200.0	11,420.3	6,870.0	85.0	84.1	-39.95	3,998.6	1,216.6	429.2	315.4	113.75	3.773		
11,900.0	7,200.0	11,520.3	6,870.0	86.8	86.0	-39.95	4,098.6	1,216.4	429.2	312.8	116.40	3.687		
12,000.0	7,200.0	11,620.3	6,870.0	88.6	87.8	-39.95	4,198.6	1,216.1	429.2	310.1	119.05	3.605		
12,100.0	7,200.0	11,720.3	6,870.0	90.4	89.7	-39.95	4,298.6	1,215.9	429.2	307.5	121.71	3.526		
12,200.0	7,200.0	11,820.3	6,870.0	92.3	91.5	-39.95	4,398.6	1,215.6	429.2	304.8	124.37	3.451		
12,300.0	7,200.0	11,920.3	6,870.0	94.1	93.4	-39.95	4,498.6	1,215.4	429.2	302.1	127.03	3.379		
12,400.0	7,200.0	12,020.3	6,870.0	95.9	95.2	-39.95	4,598.6	1,215.1	429.2	299.5	129.69	3.309		
12,500.0	7,200.0	12,120.3	6,870.0	97.8	97.1	-39.95	4,698.6	1,214.9	429.2	296.8	132.36	3.243		
12,600.0	7,200.0	12,220.3	6,870.0	99.6	98.9	-39.95	4,798.6	1,214.6	429.2	294.2	135.02	3.179		
12,700.0	7,200.0	12,320.3	6,870.0	101.4	100.8	-39.95	4,898.6	1,214.4	429.2	291.5	137.69	3.117		
12,800.0	7,200.0	12,420.3	6,870.0	103.3	102.6	-39.95	4,998.6	1,214.2	429.2	288.8	140.36	3.058		
12,900.0	7,200.0	12,520.3	6,870.0	105.1	104.5	-39.95	5,098.6	1,213.9	429.2	286.1	143.04	3.000		
13,000.0	7,200.0	12,620.3	6,870.0	107.0	106.4	-39.95	5,198.6	1,213.7	429.2	283.5	145.71	2.945		
13,100.0	7,200.0	12,720.3	6,870.0	108.8	108.2	-39.95	5,298.6	1,213.4	429.2	280.8	148.38	2.892		
13,200.0	7,200.0	12,820.3	6,870.0	110.7	110.1	-39.95	5,398.6	1,213.2	429.2	278.1	151.06	2.841		
13,300.0	7,200.0	12,920.3	6,870.0	112.5	112.0	-39.95	5,498.6	1,212.9	429.2	275.4	153.74	2.792		
13,400.0	7,200.0	13,020.3	6,870.0	114.4	113.9	-39.95	5,598.6	1,212.7	429.2	272.8	156.41	2.744		

CC - Min centre to center distance or convergent point, SF - min separation factor, ES - min ellipse separation

SRC Evans East Pad Sec.26-T5N-R66W - SRC Evans D-26-23-14NHZ - Wellbore #1 - Plan #1 (10-27-													Offset Site Error: 0.0 ft	
Survey Program: 0-MWD													Offset Well Error: 0.0 ft	
Reference		Offset		Semi Major Axis			Distance							
Measured Depth (ft)	Vertical Depth (ft)	Measured Depth (ft)	Vertical Depth (ft)	Reference (ft)	Offset (ft)	Highside Toolface (°)	Offset Wellbore Centre +N-S (ft)	+E/-W (ft)	Between Centres (ft)	Between Ellipses (ft)	Minimum Separation (ft)	Separation Factor	Warning	
13,500.0	7,200.0	13,120.3	6,870.0	116.3	115.7	-39.95	5,698.6	1,212.4	429.2	270.1	159.09	2.698		
13,600.0	7,200.0	13,220.3	6,870.0	118.1	117.6	-39.95	5,798.6	1,212.2	429.2	267.4	161.77	2.653		
13,700.0	7,200.0	13,320.3	6,870.0	120.0	119.5	-39.95	5,898.6	1,212.0	429.2	264.7	164.45	2.610		
13,800.0	7,200.0	13,420.3	6,870.0	121.9	121.4	-39.95	5,998.6	1,211.7	429.2	262.0	167.14	2.568		
13,900.0	7,200.0	13,520.3	6,870.0	123.7	123.3	-39.95	6,098.6	1,211.5	429.2	259.4	169.82	2.527		
14,000.0	7,200.0	13,620.3	6,870.0	125.6	125.1	-39.95	6,198.6	1,211.2	429.2	256.7	172.50	2.488		
14,100.0	7,200.0	13,720.3	6,870.0	127.5	127.0	-39.95	6,298.6	1,211.0	429.2	254.0	175.19	2.450		
14,200.0	7,200.0	13,820.3	6,870.0	129.3	128.9	-39.95	6,398.6	1,210.7	429.2	251.3	177.87	2.413		
14,300.0	7,200.0	13,920.3	6,870.0	131.2	130.8	-39.95	6,498.6	1,210.5	429.2	248.6	180.56	2.377		
14,400.0	7,200.0	14,020.3	6,870.0	133.1	132.7	-39.95	6,598.6	1,210.2	429.2	245.9	183.25	2.342		
14,500.0	7,200.0	14,120.3	6,870.0	135.0	134.6	-39.95	6,698.6	1,210.0	429.2	243.2	185.93	2.308		
14,588.3	7,200.0	14,208.6	6,870.0	136.6	136.2	-39.95	6,786.9	1,209.8	429.2	240.9	188.31	2.279		
14,600.0	7,200.0	14,220.3	6,870.0	136.8	136.4	-39.95	6,798.6	1,209.8	429.2	240.6	188.62	2.275		
14,700.0	7,200.0	14,320.3	6,870.0	138.7	138.3	-39.95	6,898.6	1,209.5	429.2	237.9	191.31	2.243		
14,800.0	7,200.0	14,420.3	6,870.0	140.6	140.2	-39.95	6,998.6	1,209.3	429.2	235.2	194.00	2.212		
14,900.0	7,200.0	14,520.3	6,870.0	142.5	142.1	-39.95	7,098.6	1,209.0	429.2	232.5	196.69	2.182		
15,000.0	7,200.0	14,620.3	6,870.0	144.4	144.0	-39.95	7,198.6	1,208.8	429.2	229.8	199.38	2.153		
15,100.0	7,200.0	14,720.3	6,870.0	146.2	145.9	-39.95	7,298.6	1,208.5	429.2	227.1	202.07	2.124		
15,200.0	7,200.0	14,820.3	6,870.0	148.1	147.8	-39.95	7,398.6	1,208.3	429.2	224.4	204.76	2.096		
15,300.0	7,200.0	14,920.3	6,870.0	150.0	149.7	-39.95	7,498.6	1,208.0	429.2	221.7	207.45	2.069		
15,400.0	7,200.0	15,020.3	6,870.0	151.9	151.6	-39.95	7,598.6	1,207.8	429.2	219.0	210.15	2.042		
15,500.0	7,200.0	15,120.3	6,870.0	153.8	153.5	-39.95	7,698.6	1,207.6	429.2	216.3	212.84	2.016		
15,600.0	7,200.0	15,220.3	6,870.0	155.7	155.4	-39.95	7,798.6	1,207.3	429.2	213.6	215.53	1.991		
15,700.0	7,200.0	15,320.3	6,870.0	157.5	157.3	-39.95	7,898.6	1,207.1	429.2	210.9	218.23	1.967		
15,800.0	7,200.0	15,420.3	6,870.0	159.4	159.2	-39.95	7,998.6	1,206.8	429.2	208.3	220.92	1.943		
15,900.0	7,200.0	15,520.3	6,870.0	161.3	161.1	-39.95	8,098.6	1,206.6	429.2	205.6	223.62	1.919		
16,000.0	7,200.0	15,620.3	6,870.0	163.2	162.9	-39.95	8,198.6	1,206.3	429.2	202.9	226.31	1.896		
16,088.3	7,200.0	15,708.6	6,870.0	164.9	164.6	-39.95	8,286.9	1,206.1	429.2	200.5	228.69	1.877		
16,100.0	7,200.0	15,720.3	6,870.0	165.1	164.8	-39.95	8,298.6	1,206.1	429.2	200.2	229.01	1.874		
16,200.0	7,200.0	15,820.3	6,870.0	167.0	166.7	-39.95	8,398.6	1,205.8	429.2	197.5	231.70	1.852		
16,300.0	7,200.0	15,920.3	6,870.0	168.9	168.6	-39.95	8,498.6	1,205.6	429.2	194.8	234.40	1.831		
16,400.0	7,200.0	16,020.3	6,870.0	170.8	170.5	-39.95	8,598.6	1,205.4	429.2	192.1	237.09	1.810		
16,500.0	7,200.0	16,120.3	6,870.0	172.7	172.4	-39.95	8,698.6	1,205.1	429.2	189.4	239.79	1.790		
16,600.0	7,200.0	16,220.3	6,870.0	174.6	174.3	-39.95	8,798.6	1,204.9	429.2	186.7	242.49	1.770		
16,700.0	7,200.0	16,320.3	6,870.0	176.5	176.2	-39.95	8,898.6	1,204.6	429.2	184.0	245.18	1.750		
16,800.0	7,200.0	16,420.3	6,870.0	178.4	178.1	-39.95	8,998.6	1,204.4	429.2	181.3	247.88	1.731		
16,900.0	7,200.0	16,520.3	6,870.0	180.3	180.0	-39.95	9,098.6	1,204.1	429.2	178.6	250.58	1.713		
17,000.0	7,200.0	16,620.3	6,870.0	182.2	182.0	-39.95	9,198.6	1,203.9	429.2	175.9	253.28	1.694		
17,055.2	7,200.0	16,675.5	6,870.0	183.2	183.0	-39.95	9,253.8	1,203.8	429.2	174.4	254.77	1.685		
17,100.0	7,200.0	16,720.3	6,870.0	184.0	183.9	-39.95	9,298.6	1,203.6	429.2	173.2	255.98	1.677		
17,114.9	7,200.0	16,735.2	6,870.0	184.3	184.1	-39.95	9,313.5	1,203.6	429.2	172.8	256.38	1.674 SF		

SRC Evans East Pad Sec.26-T5N-R66W - SRC Evans S-26-23-14CHZ - Wellbore #1 - Plan #1 (10-27-													Offset Site Error:	0.0 ft
Survey Program: 0-MWD													Offset Well Error:	0.0 ft
Reference		Offset		Semi Major Axis			Distance							
Measured Depth	Vertical Depth	Measured Depth	Vertical Depth	Reference	Offset	Highside Toolface	Offset Wellbore Centre		Between Centres	Between Ellipses	Minimum Separation	Separation Factor	Warning	
(ft)	(ft)	(ft)	(ft)	(ft)	(ft)	(°)	+N/-S (ft)	+E/-W (ft)	(ft)	(ft)	(ft)			
0.0	0.0	0.0	0.0	0.0	0.0	180.00	-45.2	0.0	45.2					
100.0	100.0	98.0	98.0	0.1	0.1	180.00	-45.2	0.0	45.2	45.0	0.22	203.029		
200.0	200.0	198.0	198.0	0.3	0.3	180.00	-45.2	0.0	45.2	44.5	0.67	67.451		
300.0	300.0	298.0	298.0	0.6	0.6	180.00	-45.2	0.0	45.2	44.1	1.12	40.362		
400.0	400.0	398.0	398.0	0.8	0.8	180.00	-45.2	0.0	45.2	43.6	1.57	28.797		
500.0	500.0	498.0	498.0	1.0	1.0	180.00	-45.2	0.0	45.2	43.2	2.02	22.383		
600.0	600.0	598.0	598.0	1.2	1.2	180.00	-45.2	0.0	45.2	42.7	2.47	18.306		
700.0	700.0	698.0	698.0	1.4	1.5	64.45	-45.2	0.0	44.4	41.5	2.90	15.316		
800.0	799.8	797.8	797.8	1.6	1.7	70.87	-45.2	0.0	42.4	39.1	3.32	12.764		
900.0	899.5	897.5	897.5	1.9	1.9	82.63	-45.2	0.0	40.4	36.6	3.77	10.722		
946.2	945.4	943.4	943.4	2.0	2.0	89.99	-45.2	0.0	40.1	36.1	3.99	10.048	CC, ES	
1,000.0	998.7	996.7	996.7	2.1	2.1	99.79	-45.2	0.0	40.7	36.4	4.24	9.589		
1,100.0	1,097.5	1,095.9	1,095.9	2.4	2.3	117.28	-46.2	1.3	45.5	40.8	4.70	9.671		
1,200.0	1,195.6	1,195.6	1,195.5	2.8	2.5	130.13	-49.3	5.3	54.2	49.0	5.15	10.526		
1,300.0	1,293.1	1,295.8	1,295.3	3.2	2.7	138.76	-54.5	12.1	65.3	59.7	5.60	11.657		
1,363.2	1,354.2	1,359.4	1,358.5	3.4	2.9	142.63	-58.9	17.8	73.1	67.2	5.90	12.388		
1,400.0	1,389.7	1,396.5	1,395.2	3.6	3.0	144.40	-61.9	21.7	77.6	71.5	6.08	12.765		
1,500.0	1,486.2	1,498.0	1,495.5	4.1	3.2	147.26	-71.5	34.2	88.4	81.8	6.61	13.378		
1,600.0	1,582.7	1,599.4	1,595.1	4.6	3.5	148.15	-83.3	49.4	96.8	89.6	7.20	13.455		
1,700.0	1,679.1	1,699.1	1,692.8	5.2	3.9	148.50	-95.4	65.2	104.5	96.7	7.82	13.365		
1,800.0	1,775.6	1,798.8	1,790.5	5.7	4.2	148.81	-107.6	80.9	112.2	103.7	8.46	13.261		
1,900.0	1,872.1	1,898.5	1,888.2	6.2	4.6	149.08	-119.7	96.7	119.8	110.7	9.11	13.153		
2,000.0	1,968.5	1,998.2	1,985.9	6.8	5.0	149.32	-131.8	112.4	127.5	117.7	9.77	13.046		
2,100.0	2,065.0	2,098.0	2,083.6	7.3	5.4	149.53	-144.0	128.2	135.2	124.7	10.45	12.942		
2,200.0	2,161.5	2,197.7	2,181.3	7.9	5.8	149.72	-156.1	143.9	142.9	131.7	11.12	12.843		
2,300.0	2,258.0	2,297.4	2,279.0	8.4	6.2	149.89	-168.3	159.7	150.5	138.7	11.81	12.749		
2,400.0	2,354.4	2,397.1	2,376.7	9.0	6.6	150.04	-180.4	175.4	158.2	145.7	12.50	12.662		
2,500.0	2,450.9	2,496.8	2,474.4	9.5	7.0	150.18	-192.6	191.2	165.9	152.7	13.19	12.580		
2,600.0	2,547.4	2,596.5	2,572.1	10.1	7.5	150.30	-204.7	206.9	173.6	159.7	13.88	12.503		
2,700.0	2,643.8	2,696.2	2,669.8	10.7	7.9	150.42	-216.9	222.7	181.3	166.7	14.58	12.432		
2,800.0	2,740.3	2,795.9	2,767.5	11.2	8.3	150.52	-229.0	238.4	188.9	173.7	15.28	12.366		
2,900.0	2,836.8	2,895.6	2,865.2	11.8	8.8	150.62	-241.1	254.2	196.6	180.6	15.98	12.303		
3,000.0	2,933.3	2,995.3	2,962.9	12.4	9.2	150.71	-253.3	269.9	204.3	187.6	16.68	12.245		
3,100.0	3,029.7	3,095.0	3,060.6	12.9	9.6	150.79	-265.4	285.7	212.0	194.6	17.39	12.191		
3,200.0	3,126.2	3,194.7	3,158.3	13.5	10.1	150.87	-277.6	301.4	219.7	201.6	18.09	12.140		
3,300.0	3,222.7	3,294.4	3,256.0	14.1	10.5	150.94	-289.7	317.2	227.3	208.5	18.80	12.092		
3,400.0	3,319.1	3,394.1	3,353.7	14.6	10.9	151.01	-301.9	332.9	235.0	215.5	19.51	12.047		
3,500.0	3,415.6	3,493.8	3,451.4	15.2	11.4	151.08	-314.0	348.7	242.7	222.5	20.22	12.005		
3,600.0	3,512.1	3,593.5	3,549.1	15.8	11.8	151.14	-326.2	364.4	250.4	229.5	20.93	11.965		
3,700.0	3,608.6	3,693.2	3,646.8	16.3	12.3	151.19	-338.3	380.2	258.1	236.4	21.64	11.927		
3,800.0	3,705.0	3,792.9	3,744.5	16.9	12.7	151.24	-350.4	395.9	265.8	243.4	22.35	11.892		
3,900.0	3,801.5	3,892.6	3,842.2	17.5	13.1	151.29	-362.6	411.7	273.4	250.4	23.06	11.858		
4,000.0	3,898.0	3,992.3	3,939.9	18.0	13.6	151.34	-374.7	427.4	281.1	257.4	23.77	11.826		
4,100.0	3,994.5	4,092.0	4,037.6	18.6	14.0	151.39	-386.9	443.2	288.8	264.3	24.48	11.796		
4,200.0	4,090.9	4,191.7	4,135.3	19.2	14.5	151.43	-399.0	458.9	296.5	271.3	25.20	11.768		
4,300.0	4,187.4	4,291.4	4,233.0	19.7	14.9	151.47	-411.2	474.7	304.2	278.3	25.91	11.740		
4,400.0	4,283.9	4,391.1	4,330.7	20.3	15.4	151.51	-423.3	490.4	311.9	285.3	26.62	11.714		
4,500.0	4,380.3	4,490.8	4,428.4	20.9	15.8	151.54	-435.4	506.2	319.6	292.2	27.34	11.690		
4,600.0	4,476.8	4,590.6	4,526.1	21.4	16.2	151.58	-447.6	521.9	327.2	299.2	28.05	11.666		
4,700.0	4,573.3	4,690.3	4,623.8	22.0	16.7	151.61	-459.7	537.7	334.9	306.2	28.77	11.644		
4,800.0	4,669.8	4,790.0	4,721.5	22.6	17.1	151.64	-471.9	553.4	342.6	313.1	29.48	11.622		
4,900.0	4,766.2	4,889.7	4,819.2	23.1	17.6	151.67	-484.0	569.2	350.3	320.1	30.19	11.602		



<b>Company:</b>	Synergy Resources	<b>Local Co-ordinate Reference:</b>	Well SRC Evans D-26-23-14CHZ
<b>Project:</b>	SEC.26-T5N-R66W	<b>TVD Reference:</b>	WELL @ 4769.0ft (RKB - 15')
<b>Reference Site:</b>	SRC Evans East Pad Sec.26-T5N-R66W	<b>MD Reference:</b>	WELL @ 4769.0ft (RKB - 15')
<b>Site Error:</b>	0.0ft	<b>North Reference:</b>	True
<b>Reference Well:</b>	SRC Evans D-26-23-14CHZ	<b>Survey Calculation Method:</b>	Minimum Curvature
<b>Well Error:</b>	0.0ft	<b>Output errors are at</b>	2.00 sigma
<b>Reference Wellbore</b>	Wellbore #1	<b>Database:</b>	Landmark
<b>Reference Design:</b>	Plan #1 (10-27-14)	<b>Offset TVD Reference:</b>	Offset Datum

Offset Design												Offset Site Error:	0.0 ft
Survey Program: 0-MWD												Offset Well Error:	0.0 ft
Reference		Offset		Semi Major Axis			Distance						Warning
Measured Depth (ft)	Vertical Depth (ft)	Measured Depth (ft)	Vertical Depth (ft)	Reference (ft)	Offset (ft)	Highside Toolface (°)	Offset Wellbore Centre +N/-S (ft)	+E/-W (ft)	Between Centres (ft)	Between Ellipses (ft)	Minimum Separation (ft)	Separation Factor	
5,000.0	4,862.7	4,989.4	4,916.9	23.7	18.0	151.70	-496.2	584.9	358.0	327.1	30.91	11.582	
5,100.0	4,959.2	5,089.1	5,014.6	24.3	18.5	151.73	-508.3	600.7	365.7	334.1	31.62	11.563	
5,200.0	5,055.6	5,188.8	5,112.3	24.8	18.9	151.76	-520.5	616.4	373.4	341.0	32.34	11.545	
5,300.0	5,152.1	5,288.5	5,210.0	25.4	19.4	151.78	-532.6	632.2	381.0	348.0	33.06	11.528	
5,400.0	5,248.6	5,388.2	5,307.7	26.0	19.8	151.81	-544.7	647.9	388.7	355.0	33.77	11.511	
5,500.0	5,345.1	5,487.9	5,405.4	26.5	20.3	151.83	-556.9	663.7	396.4	361.9	34.49	11.495	
5,600.0	5,441.5	5,587.6	5,503.1	27.1	20.7	151.85	-569.0	679.4	404.1	368.9	35.20	11.479	
5,700.0	5,538.0	5,687.3	5,600.8	27.7	21.2	151.87	-581.2	695.2	411.8	375.9	35.92	11.464	
5,800.0	5,634.5	5,787.0	5,698.5	28.3	21.6	151.89	-593.3	710.9	419.5	382.8	36.64	11.450	
5,900.0	5,730.9	5,886.7	5,796.2	28.8	22.0	151.91	-605.5	726.7	427.2	389.8	37.35	11.436	
6,000.0	5,827.4	5,986.4	5,893.9	29.4	22.5	151.93	-617.6	742.4	434.9	396.8	38.07	11.423	
6,100.0	5,923.9	6,086.1	5,991.6	30.0	22.9	151.95	-629.7	758.2	442.5	403.8	38.78	11.410	
6,200.0	6,020.4	6,185.8	6,089.3	30.5	23.4	151.97	-641.9	773.9	450.2	410.7	39.50	11.398	
6,300.0	6,116.8	6,285.5	6,187.0	31.1	23.8	151.99	-654.0	789.7	457.9	417.7	40.22	11.386	
6,400.0	6,213.3	6,385.2	6,284.7	31.7	24.3	152.01	-666.2	805.4	465.6	424.7	40.94	11.374	
6,500.0	6,309.8	6,484.9	6,382.4	32.2	24.7	152.02	-678.3	821.2	473.3	431.6	41.65	11.363	
6,600.0	6,406.3	6,584.8	6,480.6	32.8	25.1	152.51	-686.6	837.0	481.0	438.9	42.10	11.425	
6,612.8	6,418.6	6,597.5	6,493.2	32.9	25.1	152.68	-686.7	839.0	481.9	439.8	42.10	11.448	
6,650.0	6,454.6	6,634.2	6,529.3	33.1	25.2	163.99	-685.7	844.8	484.8	442.9	41.95	11.556	
6,700.0	6,503.1	6,683.1	6,577.4	33.3	25.3	-178.91	-681.5	852.6	488.8	447.1	41.71	11.719	
6,750.0	6,551.7	6,731.6	6,624.8	33.5	25.4	-161.80	-674.0	860.2	492.9	451.4	41.43	11.895	
6,800.0	6,600.0	6,779.7	6,671.1	33.6	25.4	-146.95	-663.5	867.6	496.9	455.8	41.14	12.080	
6,850.0	6,647.9	6,827.5	6,716.4	33.7	25.5	-135.21	-649.9	874.8	501.0	460.2	40.83	12.272	
6,900.0	6,695.1	6,875.0	6,760.3	33.8	25.5	-126.22	-633.4	881.9	505.1	464.6	40.52	12.465	
6,950.0	6,741.3	6,922.1	6,802.8	33.9	25.4	-119.34	-614.1	888.7	509.2	469.0	40.23	12.658	
7,000.0	6,786.4	6,969.0	6,843.7	34.0	25.4	-113.97	-592.2	895.2	513.2	473.3	39.95	12.847	
7,050.0	6,830.1	7,015.6	6,882.8	34.0	25.4	-109.69	-567.8	901.4	517.1	477.4	39.69	13.028	
7,100.0	6,872.2	7,061.9	6,920.1	34.0	25.3	-106.22	-541.0	907.4	520.9	481.4	39.46	13.200	
7,150.0	6,912.5	7,108.0	6,955.5	34.0	25.2	-103.36	-512.0	913.0	524.6	485.3	39.27	13.359	
7,200.0	6,950.8	7,153.8	6,988.7	34.0	25.1	-100.96	-480.9	918.3	528.1	489.0	39.11	13.503	
7,250.0	6,986.9	7,200.0	7,020.2	34.0	25.0	-98.93	-447.4	923.2	531.4	492.4	38.99	13.630	
7,300.0	7,020.7	7,245.0	7,048.7	34.0	24.9	-97.22	-413.0	927.7	534.5	495.6	38.91	13.735	
7,350.0	7,052.0	7,290.3	7,075.2	33.9	24.8	-95.75	-376.5	931.9	537.4	498.5	38.89	13.820	
7,400.0	7,080.6	7,335.4	7,099.4	33.8	24.7	-94.51	-338.5	935.7	540.0	501.1	38.91	13.880	
7,450.0	7,106.4	7,380.5	7,121.0	33.8	24.6	-93.45	-299.1	939.1	542.4	503.4	38.98	13.916	
7,500.0	7,129.2	7,425.4	7,140.1	33.7	24.5	-92.57	-258.6	942.1	544.5	505.4	39.10	13.926	
7,550.0	7,149.0	7,470.3	7,156.7	33.6	24.4	-91.84	-217.0	944.6	546.4	507.1	39.28	13.909	
7,600.0	7,165.7	7,515.1	7,170.6	33.5	24.3	-91.26	-174.5	946.8	547.9	508.4	39.51	13.866	
7,650.0	7,179.2	7,559.8	7,181.9	33.4	24.1	-90.81	-131.3	948.5	549.1	509.3	39.80	13.796	
7,700.0	7,189.3	7,604.5	7,190.5	33.3	24.0	-90.48	-87.4	949.8	550.0	509.9	40.15	13.700	
7,750.0	7,196.1	7,650.0	7,196.4	33.3	23.9	-90.28	-42.3	950.6	550.6	510.1	40.55	13.579	
7,800.0	7,199.6	7,693.8	7,199.4	33.2	23.8	-90.20	1.4	951.0	550.9	509.9	41.00	13.436	
7,825.7	7,200.0	7,716.7	7,200.0	33.1	23.8	-90.21	24.3	951.0	550.9	509.6	41.25	13.355	
7,848.7	7,200.0	7,739.1	7,200.0	33.1	23.8	-90.21	46.7	951.0	550.9	509.4	41.46	13.288	
7,900.0	7,200.0	7,790.4	7,200.0	33.0	23.7	-90.21	97.9	950.8	550.9	509.0	41.94	13.137	
8,000.0	7,200.0	7,890.4	7,200.0	33.0	23.7	-90.21	197.9	950.6	550.9	507.8	43.07	12.790	
8,100.0	7,200.0	7,990.4	7,200.0	33.0	24.0	-90.21	297.9	950.3	550.9	506.4	44.51	12.378	
8,200.0	7,200.0	8,090.4	7,200.0	33.1	24.5	-90.21	397.9	950.1	550.9	504.7	46.22	11.920	
8,300.0	7,200.0	8,190.4	7,200.0	33.3	25.4	-90.21	497.9	949.9	550.9	502.7	48.17	11.435	
8,400.0	7,200.0	8,290.4	7,200.0	33.7	26.5	-90.21	597.9	949.6	550.9	500.5	50.35	10.942	
8,500.0	7,200.0	8,390.4	7,200.0	34.2	27.7	-90.21	697.9	949.4	550.9	498.2	52.71	10.451	
8,600.0	7,200.0	8,490.4	7,200.0	34.9	29.0	-90.21	797.9	949.1	550.9	495.6	55.24	9.972	

CC - Min centre to center distance or convergent point, SF - min separation factor, ES - min ellipse separation

<b>Company:</b>	Synergy Resources	<b>Local Co-ordinate Reference:</b>	Well SRC Evans D-26-23-14CHZ
<b>Project:</b>	SEC.26-T5N-R66W	<b>TVD Reference:</b>	WELL @ 4769.0ft (RKB - 15')
<b>Reference Site:</b>	SRC Evans East Pad Sec.26-T5N-R66W	<b>MD Reference:</b>	WELL @ 4769.0ft (RKB - 15')
<b>Site Error:</b>	0.0ft	<b>North Reference:</b>	True
<b>Reference Well:</b>	SRC Evans D-26-23-14CHZ	<b>Survey Calculation Method:</b>	Minimum Curvature
<b>Well Error:</b>	0.0ft	<b>Output errors are at</b>	2.00 sigma
<b>Reference Wellbore</b>	Wellbore #1	<b>Database:</b>	Landmark
<b>Reference Design:</b>	Plan #1 (10-27-14)	<b>Offset TVD Reference:</b>	Offset Datum

Offset Design												Offset Site Error:	0.0 ft
Survey Program: 0-MWDD												Offset Well Error:	0.0 ft
Reference		Offset		Semi Major Axis			Distance						Warning
Measured Depth (ft)	Vertical Depth (ft)	Measured Depth (ft)	Vertical Depth (ft)	Reference (ft)	Offset (ft)	Highside Toolface (°)	Offset Wellbore Centre +N/-S (ft)	+E/-W (ft)	Between Centres (ft)	Between Ellipses (ft)	Minimum Separation (ft)	Separation Factor	
8,700.0	7,200.0	8,590.4	7,200.0	35.7	30.3	-90.21	897.9	948.9	550.9	493.0	57.92	9.512	
8,800.0	7,200.0	8,690.4	7,200.0	36.7	31.7	-90.21	997.9	948.6	550.9	490.2	60.72	9.073	
8,900.0	7,200.0	8,790.4	7,200.0	37.7	33.2	-90.21	1,097.9	948.4	550.9	487.3	63.63	8.658	
9,000.0	7,200.0	8,890.4	7,200.0	38.9	34.7	-90.21	1,197.9	948.1	550.9	484.3	66.63	8.268	
9,100.0	7,200.0	8,990.4	7,200.0	40.1	36.3	-90.21	1,297.9	947.9	550.9	481.2	69.72	7.902	
9,200.0	7,200.0	9,090.4	7,200.0	41.5	37.8	-90.21	1,397.9	947.7	550.9	478.0	72.87	7.560	
9,300.0	7,200.0	9,190.4	7,200.0	42.8	39.5	-90.21	1,497.9	947.4	550.9	474.8	76.09	7.240	
9,400.0	7,200.0	9,290.4	7,200.0	44.3	41.1	-90.21	1,597.9	947.2	550.9	471.5	79.37	6.941	
9,500.0	7,200.0	9,390.4	7,200.0	45.8	42.7	-90.21	1,697.9	946.9	550.9	468.2	82.69	6.662	
9,600.0	7,200.0	9,490.4	7,200.0	47.3	44.4	-90.21	1,797.9	946.7	550.9	464.8	86.06	6.401	
9,700.0	7,200.0	9,590.4	7,200.0	48.8	46.1	-90.21	1,897.9	946.4	550.9	461.4	89.47	6.157	
9,800.0	7,200.0	9,690.4	7,200.0	50.4	47.8	-90.21	1,997.9	946.2	550.9	458.0	92.91	5.929	
9,900.0	7,200.0	9,790.4	7,200.0	52.0	49.5	-90.21	2,097.9	945.9	550.9	454.5	96.38	5.716	
10,000.0	7,200.0	9,890.4	7,200.0	53.6	51.3	-90.21	2,197.9	945.7	550.9	451.0	99.88	5.516	
10,100.0	7,200.0	9,990.4	7,200.0	55.3	53.0	-90.21	2,297.9	945.5	550.9	447.5	103.40	5.328	
10,200.0	7,200.0	10,090.4	7,200.0	56.9	54.8	-90.21	2,397.9	945.2	550.9	443.9	106.94	5.151	
10,300.0	7,200.0	10,190.4	7,200.0	58.6	56.5	-90.21	2,497.9	945.0	550.9	440.4	110.51	4.985	
10,400.0	7,200.0	10,290.4	7,200.0	60.3	58.3	-90.21	2,597.9	944.7	550.9	436.8	114.09	4.829	
10,500.0	7,200.0	10,390.4	7,200.0	62.0	60.1	-90.21	2,697.9	944.5	550.9	433.2	117.69	4.681	
10,600.0	7,200.0	10,490.4	7,200.0	63.7	61.9	-90.21	2,797.9	944.2	550.9	429.6	121.30	4.541	
10,700.0	7,200.0	10,590.4	7,200.0	65.4	63.7	-90.21	2,897.9	944.0	550.9	426.0	124.93	4.410	
10,800.0	7,200.0	10,690.4	7,200.0	67.2	65.5	-90.21	2,997.9	943.7	550.9	422.3	128.57	4.285	
10,900.0	7,200.0	10,790.4	7,200.0	68.9	67.3	-90.21	3,097.9	943.5	550.9	418.7	132.22	4.166	
11,000.0	7,200.0	10,890.4	7,200.0	70.7	69.1	-90.21	3,197.9	943.3	550.9	415.0	135.88	4.054	
11,100.0	7,200.0	10,990.4	7,200.0	72.4	70.9	-90.21	3,297.9	943.0	550.9	411.3	139.56	3.947	
11,200.0	7,200.0	11,090.4	7,200.0	74.2	72.8	-90.21	3,397.9	942.8	550.9	407.7	143.24	3.846	
11,300.0	7,200.0	11,190.4	7,200.0	76.0	74.6	-90.21	3,497.9	942.5	550.9	404.0	146.93	3.749	
11,400.0	7,200.0	11,290.4	7,200.0	77.8	76.4	-90.21	3,597.9	942.3	550.9	400.3	150.62	3.657	
11,500.0	7,200.0	11,390.4	7,200.0	79.6	78.3	-90.21	3,697.9	942.0	550.9	396.6	154.33	3.570	
11,600.0	7,200.0	11,490.4	7,200.0	81.4	80.1	-90.21	3,797.9	941.8	550.9	392.9	158.04	3.486	
11,700.0	7,200.0	11,590.4	7,200.0	83.2	82.0	-90.21	3,897.9	941.5	550.9	389.1	161.75	3.406	
11,800.0	7,200.0	11,690.4	7,200.0	85.0	83.8	-90.21	3,997.9	941.3	550.9	385.4	165.48	3.329	
11,900.0	7,200.0	11,790.4	7,200.0	86.8	85.7	-90.21	4,097.9	941.1	550.9	381.7	169.20	3.256	
12,000.0	7,200.0	11,890.4	7,200.0	88.6	87.5	-90.21	4,197.9	940.8	550.9	378.0	172.94	3.186	
12,100.0	7,200.0	11,990.4	7,200.0	90.4	89.4	-90.21	4,297.9	940.6	550.9	374.2	176.67	3.118	
12,200.0	7,200.0	12,090.4	7,200.0	92.3	91.3	-90.21	4,397.9	940.3	550.9	370.5	180.42	3.053	
12,300.0	7,200.0	12,190.4	7,200.0	94.1	93.1	-90.21	4,497.9	940.1	550.9	366.7	184.16	2.991	
12,400.0	7,200.0	12,290.4	7,200.0	95.9	95.0	-90.21	4,597.9	939.8	550.9	363.0	187.91	2.932	
12,500.0	7,200.0	12,390.4	7,200.0	97.8	96.8	-90.21	4,697.9	939.6	550.9	359.2	191.67	2.874	
12,600.0	7,200.0	12,490.4	7,200.0	99.6	98.7	-90.21	4,797.9	939.3	550.9	355.5	195.42	2.819	
12,700.0	7,200.0	12,590.4	7,200.0	101.4	100.6	-90.21	4,897.9	939.1	550.9	351.7	199.18	2.766	
12,800.0	7,200.0	12,690.4	7,200.0	103.3	102.5	-90.21	4,997.9	938.9	550.9	347.9	202.95	2.714	
12,900.0	7,200.0	12,790.4	7,200.0	105.1	104.3	-90.21	5,097.9	938.6	550.9	344.2	206.71	2.665	
13,000.0	7,200.0	12,890.4	7,200.0	107.0	106.2	-90.21	5,197.9	938.4	550.9	340.4	210.48	2.617	
13,100.0	7,200.0	12,990.4	7,200.0	108.8	108.1	-90.21	5,297.9	938.1	550.9	336.6	214.25	2.571	
13,200.0	7,200.0	13,090.4	7,200.0	110.7	110.0	-90.21	5,397.9	937.9	550.9	332.9	218.03	2.527	
13,300.0	7,200.0	13,190.4	7,200.0	112.5	111.9	-90.21	5,497.9	937.6	550.9	329.1	221.81	2.484	
13,400.0	7,200.0	13,290.4	7,200.0	114.4	113.7	-90.21	5,597.9	937.4	550.9	325.3	225.58	2.442	
13,500.0	7,200.0	13,390.4	7,200.0	116.3	115.6	-90.21	5,697.9	937.2	550.9	321.5	229.37	2.402	
13,600.0	7,200.0	13,490.4	7,200.0	118.1	117.5	-90.21	5,797.9	936.9	550.9	317.7	233.15	2.363	
13,700.0	7,200.0	13,590.4	7,200.0	120.0	119.4	-90.21	5,897.9	936.7	550.9	314.0	236.93	2.325	
13,800.0	7,200.0	13,690.4	7,200.0	121.9	121.3	-90.21	5,997.9	936.4	550.9	310.2	240.72	2.289	

CC - Min centre to center distance or convergent point, SF - min separation factor, ES - min ellipse separation



Survey Design													Offset Site Error:		0.0 ft
SRC Evans East Pad Sec.26-T5N-R66W - SRC Evans S-26-23-14CHZ - Wellbore #1 - Plan #1 (10-27-													Offset Well Error:		0.0 ft
Reference		Offset		Semi Major Axis			Distance						Warning		
Measured Depth (ft)	Vertical Depth (ft)	Measured Depth (ft)	Vertical Depth (ft)	Reference (ft)	Offset (ft)	Highside Toolface (°)	Offset Wellbore Centre +N/-S (ft)	+E/-W (ft)	Between Centres (ft)	Between Ellipses (ft)	Minimum Separation (ft)	Separation Factor			
13,900.0	7,200.0	13,790.4	7,200.0	123.7	123.2	-90.21	6,097.9	936.2	550.9	306.4	244.51	2.253			
14,000.0	7,200.0	13,890.4	7,200.0	125.6	125.1	-90.21	6,197.9	935.9	550.9	302.6	248.30	2.219			
14,100.0	7,200.0	13,990.4	7,200.0	127.5	126.9	-90.21	6,297.9	935.7	550.9	298.8	252.09	2.185			
14,200.0	7,200.0	14,090.4	7,200.0	129.3	128.8	-90.21	6,397.9	935.4	550.9	295.0	255.88	2.153			
14,300.0	7,200.0	14,190.4	7,200.0	131.2	130.7	-90.21	6,497.9	935.2	550.9	291.2	259.68	2.121			
14,400.0	7,200.0	14,290.4	7,200.0	133.1	132.6	-90.21	6,597.9	935.0	550.9	287.4	263.48	2.091			
14,500.0	7,200.0	14,390.4	7,200.0	135.0	134.5	-90.21	6,697.9	934.7	550.9	283.6	267.27	2.061			
14,600.0	7,200.0	14,490.4	7,200.0	136.8	136.4	-90.21	6,797.9	934.5	550.9	279.8	271.07	2.032			
14,700.0	7,200.0	14,590.4	7,200.0	138.7	138.3	-90.21	6,897.9	934.2	550.9	276.0	274.87	2.004			
14,800.0	7,200.0	14,690.4	7,200.0	140.6	140.2	-90.21	6,997.9	934.0	550.9	272.2	278.67	1.977			
14,900.0	7,200.0	14,790.4	7,200.0	142.5	142.1	-90.21	7,097.9	933.7	550.9	268.4	282.48	1.950			
15,000.0	7,200.0	14,890.4	7,200.0	144.4	144.0	-90.21	7,197.9	933.5	550.9	264.6	286.28	1.924			
15,100.0	7,200.0	14,990.4	7,200.0	146.2	145.9	-90.21	7,297.9	933.2	550.9	260.8	290.08	1.899			
15,200.0	7,200.0	15,090.4	7,200.0	148.1	147.8	-90.21	7,397.9	933.0	550.9	257.0	293.89	1.874			
15,300.0	7,200.0	15,190.4	7,200.0	150.0	149.7	-90.21	7,497.9	932.8	550.9	253.2	297.69	1.851			
15,400.0	7,200.0	15,290.4	7,200.0	151.9	151.6	-90.21	7,597.9	932.5	550.9	249.4	301.50	1.827			
15,500.0	7,200.0	15,390.4	7,200.0	153.8	153.5	-90.21	7,697.9	932.3	550.9	245.6	305.31	1.804			
15,600.0	7,200.0	15,490.4	7,200.0	155.7	155.4	-90.21	7,797.9	932.0	550.9	241.8	309.12	1.782			
15,700.0	7,200.0	15,590.4	7,200.0	157.5	157.3	-90.21	7,897.9	931.8	550.9	238.0	312.93	1.760			
15,800.0	7,200.0	15,690.4	7,200.0	159.4	159.2	-90.21	7,997.9	931.5	550.9	234.2	316.74	1.739			
15,900.0	7,200.0	15,790.4	7,200.0	161.3	161.1	-90.21	8,097.9	931.3	550.9	230.3	320.55	1.719			
16,000.0	7,200.0	15,890.4	7,200.0	163.2	163.0	-90.21	8,197.9	931.0	550.9	226.5	324.36	1.698			
16,100.0	7,200.0	15,990.4	7,200.0	165.1	164.9	-90.21	8,297.9	930.8	550.9	222.7	328.18	1.679			
16,200.0	7,200.0	16,090.4	7,200.0	167.0	166.8	-90.21	8,397.9	930.6	550.9	218.9	331.99	1.659			
16,300.0	7,200.0	16,190.4	7,200.0	168.9	168.7	-90.21	8,497.9	930.3	550.9	215.1	335.80	1.641			
16,400.0	7,200.0	16,290.4	7,200.0	170.8	170.6	-90.21	8,597.9	930.1	550.9	211.3	339.62	1.622			
16,500.0	7,200.0	16,390.4	7,200.0	172.7	172.5	-90.21	8,697.9	929.8	550.9	207.5	343.43	1.604			
16,600.0	7,200.0	16,490.4	7,200.0	174.6	174.4	-90.21	8,797.9	929.6	550.9	203.6	347.25	1.586			
16,700.0	7,200.0	16,590.4	7,200.0	176.5	176.3	-90.21	8,897.9	929.3	550.9	199.8	351.07	1.569			
16,800.0	7,200.0	16,690.4	7,200.0	178.4	178.2	-90.21	8,997.9	929.1	550.9	196.0	354.88	1.552			
16,900.0	7,200.0	16,790.4	7,200.0	180.3	180.1	-90.21	9,097.9	928.8	550.9	192.2	358.70	1.536			
17,000.0	7,200.0	16,890.4	7,200.0	182.2	182.0	-90.21	9,197.9	928.6	550.9	188.4	362.52	1.520			
17,100.0	7,200.0	16,990.4	7,200.0	184.0	183.9	-90.21	9,297.9	928.4	550.9	184.6	366.34	1.504			
17,114.9	7,200.0	17,005.3	7,200.0	184.3	184.2	-90.21	9,312.8	928.3	550.9	184.0	366.91	1.501 SF			

<b>Company:</b>	Synergy Resources	<b>Local Co-ordinate Reference:</b>	Well SRC Evans D-26-23-14CHZ
<b>Project:</b>	SEC.26-T5N-R66W	<b>TVD Reference:</b>	WELL @ 4769.0ft (RKB - 15')
<b>Reference Site:</b>	SRC Evans East Pad Sec.26-T5N-R66W	<b>MD Reference:</b>	WELL @ 4769.0ft (RKB - 15')
<b>Site Error:</b>	0.0ft	<b>North Reference:</b>	True
<b>Reference Well:</b>	SRC Evans D-26-23-14CHZ	<b>Survey Calculation Method:</b>	Minimum Curvature
<b>Well Error:</b>	0.0ft	<b>Output errors are at</b>	2.00 sigma
<b>Reference Wellbore</b>	Wellbore #1	<b>Database:</b>	Landmark
<b>Reference Design:</b>	Plan #1 (10-27-14)	<b>Offset TVD Reference:</b>	Offset Datum

Offset Design													Offset Site Error:	0.0 ft
Survey Program: 0-MWD													Offset Well Error:	0.0 ft
Reference		Offset		Semi Major Axis			Distance							Warning
Measured Depth (ft)	Vertical Depth (ft)	Measured Depth (ft)	Vertical Depth (ft)	Reference (ft)	Offset (ft)	Highside Toolface (°)	Offset Wellbore Centre +N/-S (ft)	+E/-W (ft)	Between Centres (ft)	Between Ellipses (ft)	Minimum Separation (ft)	Separation Factor		
0.0	0.0	0.0	0.0	0.0	0.0	180.00	-67.4	0.0	67.5					
100.0	100.0	97.0	97.0	0.1	0.1	180.00	-67.4	0.0	67.4	67.2	0.22	304.432		
200.0	200.0	197.0	197.0	0.3	0.3	180.00	-67.4	0.0	67.4	66.7	0.67	100.968		
300.0	300.0	297.0	297.0	0.6	0.6	180.00	-67.4	0.0	67.4	66.3	1.12	60.337		
400.0	400.0	397.0	397.0	0.8	0.8	180.00	-67.4	0.0	67.4	65.8	1.57	43.024		
500.0	500.0	497.0	497.0	1.0	1.0	180.00	-67.4	0.0	67.4	65.4	2.02	33.431		
600.0	600.0	597.0	597.0	1.2	1.2	180.00	-67.4	0.0	67.4	64.9	2.47	27.336		
700.0	700.0	697.0	697.0	1.4	1.5	63.78	-67.4	0.0	66.6	63.7	2.90	22.997		
800.0	799.8	796.8	796.8	1.6	1.7	67.99	-67.4	0.0	64.5	61.2	3.32	19.420		
900.0	899.5	896.5	896.5	1.9	1.9	75.54	-67.4	0.0	61.7	58.0	3.76	16.401		
1,000.0	998.7	995.7	995.7	2.1	2.1	86.86	-67.4	0.0	59.8	55.6	4.24	14.115		
1,023.1	1,021.6	1,018.6	1,018.6	2.2	2.2	90.00	-67.4	0.0	59.8	55.4	4.36	13.710 CC, ES		
1,100.0	1,097.5	1,094.5	1,094.5	2.4	2.3	101.49	-67.4	0.0	61.0	56.3	4.75	12.847		
1,200.0	1,195.6	1,192.6	1,192.6	2.8	2.6	117.22	-67.4	0.0	67.5	62.2	5.26	12.828 SF		
1,300.0	1,293.1	1,291.0	1,291.0	3.2	2.8	130.38	-68.5	1.0	79.9	74.2	5.73	13.947		
1,363.2	1,354.2	1,353.6	1,353.5	3.4	2.9	136.45	-70.4	2.8	90.0	84.0	6.01	14.970		
1,400.0	1,389.7	1,390.1	1,390.0	3.6	3.0	139.30	-72.0	4.3	96.2	90.0	6.17	15.578		
1,500.0	1,486.2	1,490.4	1,489.9	4.1	3.1	144.50	-78.1	10.1	112.6	105.9	6.64	16.949		
1,600.0	1,582.7	1,591.7	1,590.5	4.6	3.4	147.14	-86.8	18.4	127.5	120.3	7.15	17.822		
1,700.0	1,679.1	1,693.9	1,691.4	5.2	3.6	148.10	-98.3	29.2	140.3	132.5	7.71	18.183		
1,800.0	1,775.6	1,793.9	1,789.9	5.7	3.9	148.15	-111.2	41.4	151.5	143.2	8.32	18.203		
1,900.0	1,872.1	1,893.3	1,887.7	6.2	4.2	148.18	-124.2	53.7	162.7	153.8	8.96	18.165		
2,000.0	1,968.5	1,992.7	1,985.4	6.8	4.5	148.20	-137.1	65.9	173.9	164.3	9.61	18.100		
2,100.0	2,065.0	2,092.1	2,083.2	7.3	4.9	148.22	-150.1	78.1	185.1	174.9	10.27	18.020		
2,200.0	2,161.5	2,191.4	2,180.9	7.9	5.2	148.23	-163.0	90.4	196.3	185.4	10.95	17.928		
2,300.0	2,258.0	2,290.8	2,278.7	8.4	5.6	148.25	-176.0	102.6	207.5	195.9	11.64	17.833		
2,400.0	2,354.4	2,390.2	2,376.5	9.0	5.9	148.26	-188.9	114.9	218.7	206.4	12.33	17.737		
2,500.0	2,450.9	2,489.5	2,474.2	9.5	6.3	148.27	-201.9	127.1	229.9	216.9	13.03	17.642		
2,600.0	2,547.4	2,588.9	2,572.0	10.1	6.7	148.28	-214.8	139.3	241.1	227.4	13.74	17.550		
2,700.0	2,643.8	2,688.3	2,669.7	10.7	7.1	148.29	-227.8	151.6	252.3	237.9	14.45	17.461		
2,800.0	2,740.3	2,787.6	2,767.5	11.2	7.4	148.30	-240.7	163.8	263.5	248.4	15.17	17.375		
2,900.0	2,836.8	2,887.0	2,865.3	11.8	7.8	148.31	-253.7	176.1	274.7	258.9	15.89	17.294		
3,000.0	2,933.3	2,986.4	2,963.0	12.4	8.2	148.32	-266.6	188.3	285.9	269.3	16.61	17.216		
3,100.0	3,029.7	3,085.8	3,060.8	12.9	8.6	148.32	-279.6	200.5	297.1	279.8	17.33	17.142		
3,200.0	3,126.2	3,185.1	3,158.5	13.5	9.0	148.33	-292.5	212.8	308.3	290.3	18.06	17.072		
3,300.0	3,222.7	3,284.5	3,256.3	14.1	9.4	148.33	-305.5	225.0	319.6	300.8	18.79	17.005		
3,400.0	3,319.1	3,383.9	3,354.1	14.6	9.8	148.34	-318.4	237.2	330.8	311.2	19.52	16.942		
3,500.0	3,415.6	3,483.2	3,451.8	15.2	10.2	148.35	-331.4	249.5	342.0	321.7	20.26	16.882		
3,600.0	3,512.1	3,582.6	3,549.6	15.8	10.6	148.35	-344.3	261.7	353.2	332.2	20.99	16.825		
3,700.0	3,608.6	3,682.0	3,647.3	16.3	11.0	148.35	-357.3	274.0	364.4	342.6	21.73	16.770		
3,800.0	3,705.0	3,781.4	3,745.1	16.9	11.4	148.36	-370.2	286.2	375.6	353.1	22.46	16.719		
3,900.0	3,801.5	3,880.7	3,842.9	17.5	11.8	148.36	-383.2	298.4	386.8	363.6	23.20	16.670		
4,000.0	3,898.0	3,980.1	3,940.6	18.0	12.2	148.37	-396.1	310.7	398.0	374.0	23.94	16.623		
4,100.0	3,994.5	4,079.5	4,038.4	18.6	12.6	148.37	-409.1	322.9	409.2	384.5	24.68	16.579		
4,200.0	4,090.9	4,178.8	4,136.1	19.2	13.0	148.37	-422.0	335.2	420.4	394.9	25.42	16.536		
4,300.0	4,187.4	4,278.2	4,233.9	19.7	13.4	148.38	-435.0	347.4	431.6	405.4	26.16	16.496		
4,400.0	4,283.9	4,377.6	4,331.7	20.3	13.8	148.38	-447.9	359.6	442.8	415.9	26.91	16.457		
4,500.0	4,380.3	4,476.9	4,429.4	20.9	14.2	148.38	-460.9	371.9	454.0	426.3	27.65	16.420		
4,600.0	4,476.8	4,576.3	4,527.2	21.4	14.6	148.39	-473.8	384.1	465.2	436.8	28.39	16.385		
4,700.0	4,573.3	4,675.7	4,624.9	22.0	15.0	148.39	-486.8	396.3	476.4	447.2	29.14	16.351		
4,800.0	4,669.8	4,775.1	4,722.7	22.6	15.4	148.39	-499.7	408.6	487.6	457.7	29.88	16.318		
4,900.0	4,766.2	4,874.4	4,820.5	23.1	15.8	148.39	-512.7	420.8	498.8	468.2	30.62	16.287		

CC - Min centre to center distance or convergent point, SF - min separation factor, ES - min ellipse separation

SRC Evans East Pad Sec.26-T5N-R66W - SRC Evans S-26-23-14NHZ - Wellbore #1 - Plan #1 (10-27-													Offset Site Error:	0.0 ft
Survey Program: 0-MWD													Offset Well Error:	0.0 ft
Reference		Offset		Semi Major Axis			Distance						Warning	
Measured Depth	Vertical Depth	Measured Depth	Vertical Depth	Reference	Offset	Highside Toolface	Offset Wellbore Centre		Between Centres	Between Ellipses	Minimum Separation	Separation Factor		
(ft)	(ft)	(ft)	(ft)	(ft)	(ft)	(°)	+N/-S (ft)	+E/-W (ft)	(ft)	(ft)	(ft)			
5,000.0	4,862.7	4,973.8	4,918.2	23.7	16.3	148.40	-525.6	433.1	510.0	478.6	31.37	16.257		
5,100.0	4,959.2	5,073.2	5,016.0	24.3	16.7	148.40	-538.6	445.3	521.2	489.1	32.12	16.229		
5,200.0	5,055.6	5,172.5	5,113.7	24.8	17.1	148.40	-551.5	457.5	532.4	499.5	32.86	16.201		
5,300.0	5,152.1	5,271.9	5,211.5	25.4	17.5	148.40	-564.5	469.8	543.6	510.0	33.61	16.175		
5,400.0	5,248.6	5,371.3	5,309.3	26.0	17.9	148.40	-577.4	482.0	554.8	520.4	34.35	16.149		
5,500.0	5,345.1	5,470.7	5,407.0	26.5	18.3	148.41	-590.4	494.2	566.0	530.9	35.10	16.125		
5,600.0	5,441.5	5,570.0	5,504.8	27.1	18.7	148.41	-603.3	506.5	577.2	541.4	35.85	16.101		
5,700.0	5,538.0	5,669.4	5,602.5	27.7	19.1	148.41	-616.3	518.7	588.4	551.8	36.60	16.078		
5,800.0	5,634.5	5,768.8	5,700.3	28.3	19.5	148.41	-629.2	531.0	599.6	562.3	37.34	16.056		
5,900.0	5,730.9	5,868.1	5,798.1	28.8	19.9	148.41	-642.2	543.2	610.8	572.7	38.09	16.035		
6,000.0	5,827.4	5,967.5	5,895.8	29.4	20.4	148.41	-655.1	555.4	622.0	583.2	38.84	16.015		
6,100.0	5,923.9	6,066.9	5,993.6	30.0	20.8	148.42	-668.0	567.7	633.2	593.6	39.59	15.995		
6,200.0	6,020.4	6,167.9	6,093.0	30.5	21.2	148.46	-680.7	580.1	644.4	604.1	40.30	15.989		
6,300.0	6,116.8	6,272.4	6,196.6	31.1	21.4	149.47	-682.8	593.1	654.9	614.4	40.52	16.163		
6,400.0	6,213.3	6,371.8	6,294.4	31.7	21.5	151.61	-670.7	605.2	665.3	625.1	40.20	16.553		
6,500.0	6,309.8	6,463.0	6,381.9	32.2	21.5	154.49	-647.7	616.1	677.0	637.5	39.50	17.142		
6,600.0	6,406.3	6,544.4	6,457.1	32.8	21.5	157.74	-617.8	625.4	691.8	653.1	38.63	17.907		
6,612.8	6,418.6	6,554.1	6,465.8	32.9	21.5	158.16	-613.7	626.5	694.0	655.4	38.52	18.017		
6,650.0	6,454.6	6,581.8	6,490.3	33.1	21.4	170.45	-601.3	629.5	700.7	662.7	38.02	18.428		
6,700.0	6,503.1	6,618.4	6,522.0	33.3	21.4	-171.16	-583.4	633.5	710.4	673.1	37.39	19.002		
6,750.0	6,551.7	6,650.0	6,548.6	33.5	21.3	-152.95	-566.7	636.7	720.9	684.0	36.87	19.550		
6,800.0	6,600.0	6,689.6	6,580.9	33.6	21.2	-136.74	-544.1	640.7	731.8	695.4	36.33	20.141		
6,850.0	6,647.9	6,724.4	6,608.2	33.7	21.2	-123.84	-522.7	644.1	743.1	707.1	35.92	20.686		
6,900.0	6,695.1	6,758.8	6,634.1	33.8	21.1	-113.75	-500.4	647.2	754.6	719.0	35.58	21.206		
6,950.0	6,741.3	6,792.7	6,658.6	33.9	21.0	-105.82	-477.1	650.3	766.1	730.8	35.30	21.702		
7,000.0	6,786.4	6,826.3	6,681.8	34.0	20.9	-99.47	-453.0	653.1	777.7	742.6	35.07	22.174		
7,050.0	6,830.1	6,859.5	6,703.6	34.0	20.8	-94.29	-428.0	655.7	789.1	754.2	34.87	22.629		

<b>Local Co-ordinate Reference:</b>	Well SRC Evans D-26-23-14CHZ
<b>TVD Reference:</b>	WELL @ 4769.0ft (RKB - 15')
<b>MD Reference:</b>	WELL @ 4769.0ft (RKB - 15')
<b>North Reference:</b>	True
<b>Survey Calculation Method:</b>	Minimum Curvature
<b>Output errors are at</b>	2.00 sigma
<b>Database:</b>	Landmark
<b>Offset TVD Reference:</b>	Offset Datum

Grid Convergence at Surface is: 0.49°



**Company:** Synergy Resources  
**Project:** SEC.26-T5N-R66W  
**Reference Site:** SRC Evans East Pad Sec.26-T5N-R66W  
**Site Error:** 0.0ft  
**Reference Well:** SRC Evans D-26-23-14CHZ  
**Well Error:** 0.0ft  
**Reference Wellbore:** Wellbore #1  
**Reference Design:** Plan #1 (10-27-14)

**Local Co-ordinate Reference:** Well SRC Evans D-26-23-14CHZ  
**TVD Reference:** WELL @ 4769.0ft (RKB - 15')  
**MD Reference:** WELL @ 4769.0ft (RKB - 15')  
**North Reference:** True  
**Survey Calculation Method:** Minimum Curvature  
**Output errors are at** 2.00 sigma  
**Database:** Landmark  
**Offset TVD Reference:** Offset Datum

Reference Depths are relative to WELL @ 4769.0ft (RKB - 15')

Offset Depths are relative to Offset Datum

Central Meridian is -105.500000 °

Coordinates are relative to: SRC Evans D-26-23-14CHZ

Coordinate System is US State Plane 1983, Colorado Northern Zone

Grid Convergence at Surface is: 0.49°

