

Synergy Resources

Well Name: **SRC Evans D-26-23-14NHZ**

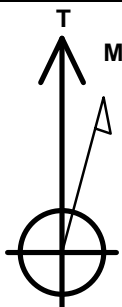
Surface Location: SRC Evans East Pad Sec.26-T5N-R66W
North American Datum 1983 , US State Plane 1983 , Colorado Northern Zone

Ground Elevation: 4753.0

+N/-S	+E/-W	Northing	Easting	Latitude	Longitude	Slot
0.0	0.0	1379410.53	3211050.43	40.372409	-104.742516	
RKB - 15' WELL @ 4768.0ft (RKB - 15')						

WELLBORE TARGET DETAILS

Name	TVD	+N/-S	+E/-W	Shape
SHL 1935'FNL, 2130'FEL, SEC.26	1.0	0.0	0.0	Point
BHL 2169'FSL, 901'FEL, SEC.14	6870.0	9346.8	1204.6	Point



Azimuths to True North
Magnetic North: 8.39°

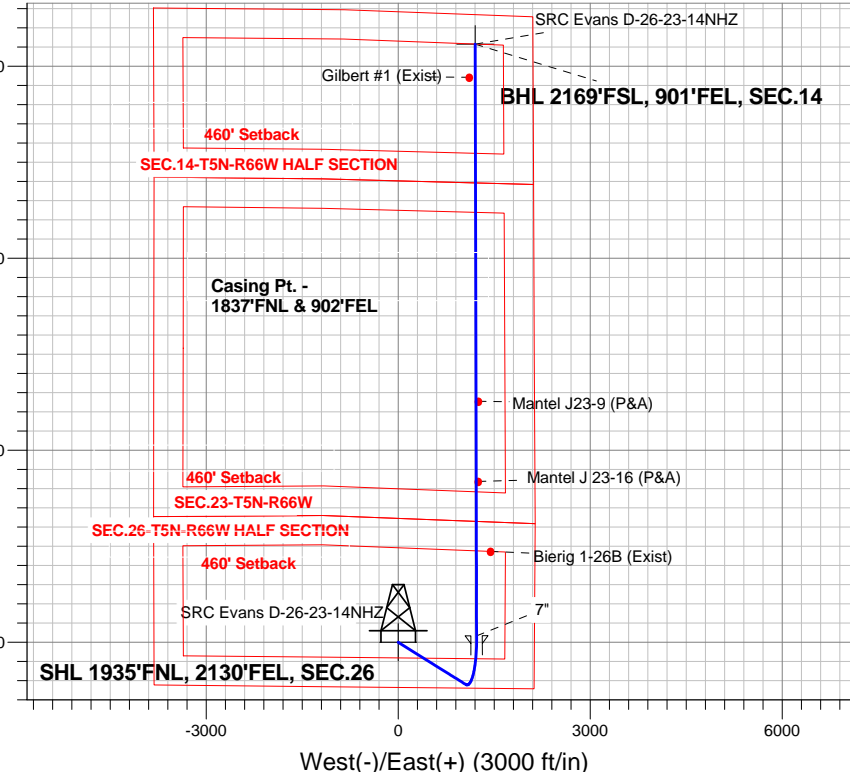
Magnetic Field
Strength: 52764.2snT
Dip Angle: 66.91°
Date: 10/30/2014
Model: IGRF2010

SRC Evans East Pad Sec.26-T5N-R66W
SRC Evans D-26-23-14NHZ
Plan #1 (10-27-14)
14:10, October 30 2014

ANNOTATIONS

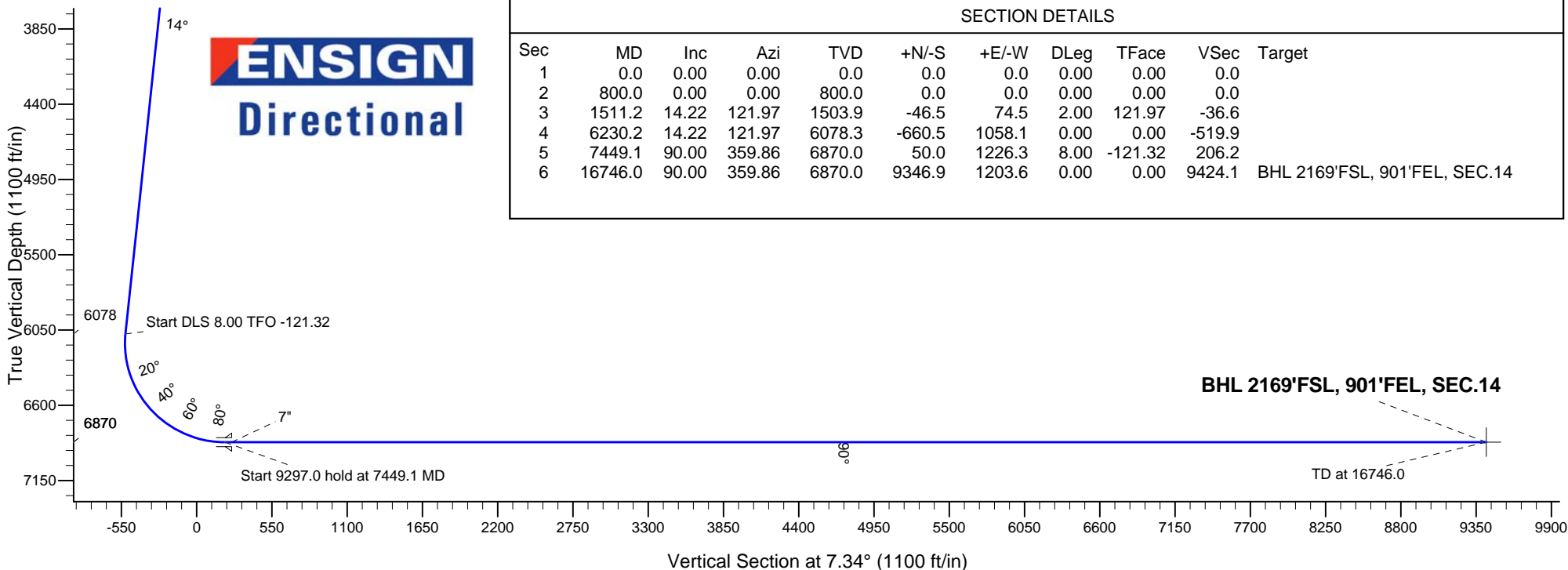
TVD	MD	Annotation
800.0	800.0	KOP - Start Build 2.00
1503.9	1511.2	Start 4719.1 hold at 1511.2 MD
6078.3	6230.2	Start DLS 8.00 TFO -121.32
6870.0	7449.1	Start 9297.0 hold at 7449.1 MD
6870.0	16746.0	TD at 16746.0

South(-)/North(+) (3000 ft/in)



West(-)/East(+) (3000 ft/in)

ENSIGN
Directional



SECTION DETAILS

Sec	MD	Inc	Azi	TVD	+N/-S	+E/-W	DLeg	TFace	VSec	Target
1	0.0	0.00	0.00	0.0	0.0	0.0	0.00	0.00	0.0	
2	800.0	0.00	0.00	800.0	0.0	0.0	0.00	0.00	0.0	
3	1511.2	14.22	121.97	1503.9	-46.5	74.5	2.00	121.97	-36.6	
4	6230.2	14.22	121.97	6078.3	-660.5	1058.1	0.00	0.00	-519.9	
5	7449.1	90.00	359.86	6870.0	50.0	1226.3	8.00	-121.32	206.2	
6	16746.0	90.00	359.86	6870.0	9346.9	1203.6	0.00	0.00	9424.1	BHL 2169'FSL, 901'FEL, SEC.14



Synergy Resources

SEC.26-T5N-R66W

SRC Evans East Pad Sec.26-T5N-R66W

SRC Evans D-26-23-14NHZ

Wellbore #1

Plan: Plan #1 (10-27-14)

Standard Planning Report

30 October, 2014

Plan Sections										
Measured Depth (ft)	Inclination (°)	Azimuth (°)	Vertical Depth (ft)	+N/-S (ft)	+E/-W (ft)	Dogleg Rate (°/100ft)	Build Rate (°/100ft)	Turn Rate (°/100ft)	TFO (°)	Target
0.0	0.00	0.00	0.0	0.0	0.0	0.00	0.00	0.00	0.00	
800.0	0.00	0.00	800.0	0.0	0.0	0.00	0.00	0.00	0.00	
1,511.2	14.22	121.97	1,503.9	-46.5	74.5	2.00	2.00	0.00	121.97	
6,230.2	14.22	121.97	6,078.3	-660.5	1,058.1	0.00	0.00	0.00	0.00	
7,449.1	90.00	359.86	6,870.0	50.0	1,226.3	8.00	6.22	-10.02	-121.32	
16,746.0	90.00	359.86	6,870.0	9,346.9	1,203.6	0.00	0.00	0.00	0.00	BHL 2169'FSL, 901

Database:	Landmark	Local Co-ordinate Reference:	Well SRC Evans D-26-23-14NHZ
Company:	Synergy Resources	TVD Reference:	WELL @ 4768.0ft (RKB - 15')
Project:	SEC.26-T5N-R66W	MD Reference:	WELL @ 4768.0ft (RKB - 15')
Site:	SRC Evans East Pad Sec.26-T5N-R66W	North Reference:	True
Well:	SRC Evans D-26-23-14NHZ	Survey Calculation Method:	Minimum Curvature
Wellbore:	Wellbore #1		
Design:	Plan #1 (10-27-14)		

Planned Survey									
Measured Depth (ft)	Inclination (°)	Azimuth (°)	Vertical Depth (ft)	+N/-S (ft)	+E/-W (ft)	Vertical Section (ft)	Dogleg Rate (°/100ft)	Build Rate (°/100ft)	Turn Rate (°/100ft)
0.0	0.00	0.00	0.0	0.0	0.0	0.0	0.00	0.00	0.00
1.0	0.00	0.00	1.0	0.0	0.0	0.0	0.00	0.00	0.00
SHL 1935'FNL, 2130'FEL, SEC.26									
100.0	0.00	0.00	100.0	0.0	0.0	0.0	0.00	0.00	0.00
200.0	0.00	0.00	200.0	0.0	0.0	0.0	0.00	0.00	0.00
300.0	0.00	0.00	300.0	0.0	0.0	0.0	0.00	0.00	0.00
400.0	0.00	0.00	400.0	0.0	0.0	0.0	0.00	0.00	0.00
500.0	0.00	0.00	500.0	0.0	0.0	0.0	0.00	0.00	0.00
600.0	0.00	0.00	600.0	0.0	0.0	0.0	0.00	0.00	0.00
700.0	0.00	0.00	700.0	0.0	0.0	0.0	0.00	0.00	0.00
800.0	0.00	0.00	800.0	0.0	0.0	0.0	0.00	0.00	0.00
KOP - Start Build 2.00									
900.0	2.00	121.97	900.0	-0.9	1.5	-0.7	2.00	2.00	0.00
1,000.0	4.00	121.97	999.8	-3.7	5.9	-2.9	2.00	2.00	0.00
1,100.0	6.00	121.97	1,099.5	-8.3	13.3	-6.5	2.00	2.00	0.00
1,200.0	8.00	121.97	1,198.7	-14.8	23.7	-11.6	2.00	2.00	0.00
1,300.0	10.00	121.97	1,297.5	-23.0	36.9	-18.1	2.00	2.00	0.00
1,400.0	12.00	121.97	1,395.6	-33.1	53.1	-26.1	2.00	2.00	0.00
1,500.0	14.00	121.97	1,493.1	-45.1	72.2	-35.5	2.00	2.00	0.00
1,511.2	14.22	121.97	1,503.9	-46.5	74.5	-36.6	2.00	2.00	0.00
Start 4719.1 hold at 1511.2 MD									
1,600.0	14.22	121.97	1,590.0	-58.1	93.0	-45.7	0.00	0.00	0.00
1,700.0	14.22	121.97	1,686.9	-71.1	113.9	-55.9	0.00	0.00	0.00
1,800.0	14.22	121.97	1,783.9	-84.1	134.7	-66.2	0.00	0.00	0.00
1,900.0	14.22	121.97	1,880.8	-97.1	155.5	-76.4	0.00	0.00	0.00
2,000.0	14.22	121.97	1,977.7	-110.1	176.4	-86.7	0.00	0.00	0.00
2,100.0	14.22	121.97	2,074.7	-123.1	197.2	-96.9	0.00	0.00	0.00
2,200.0	14.22	121.97	2,171.6	-136.1	218.1	-107.2	0.00	0.00	0.00
2,300.0	14.22	121.97	2,268.5	-149.1	238.9	-117.4	0.00	0.00	0.00
2,400.0	14.22	121.97	2,365.5	-162.1	259.8	-127.6	0.00	0.00	0.00
2,500.0	14.22	121.97	2,462.4	-175.2	280.6	-137.9	0.00	0.00	0.00
2,600.0	14.22	121.97	2,559.3	-188.2	301.4	-148.1	0.00	0.00	0.00
2,700.0	14.22	121.97	2,656.3	-201.2	322.3	-158.4	0.00	0.00	0.00
2,800.0	14.22	121.97	2,753.2	-214.2	343.1	-168.6	0.00	0.00	0.00
2,900.0	14.22	121.97	2,850.1	-227.2	364.0	-178.9	0.00	0.00	0.00
3,000.0	14.22	121.97	2,947.1	-240.2	384.8	-189.1	0.00	0.00	0.00
3,100.0	14.22	121.97	3,044.0	-253.2	405.6	-199.3	0.00	0.00	0.00
3,200.0	14.22	121.97	3,140.9	-266.2	426.5	-209.6	0.00	0.00	0.00
3,300.0	14.22	121.97	3,237.9	-279.2	447.3	-219.8	0.00	0.00	0.00
3,400.0	14.22	121.97	3,334.8	-292.2	468.2	-230.1	0.00	0.00	0.00
3,500.0	14.22	121.97	3,431.8	-305.3	489.0	-240.3	0.00	0.00	0.00
3,600.0	14.22	121.97	3,528.7	-318.3	509.9	-250.5	0.00	0.00	0.00
3,700.0	14.22	121.97	3,625.6	-331.3	530.7	-260.8	0.00	0.00	0.00
3,800.0	14.22	121.97	3,722.6	-344.3	551.5	-271.0	0.00	0.00	0.00
3,900.0	14.22	121.97	3,819.5	-357.3	572.4	-281.3	0.00	0.00	0.00
4,000.0	14.22	121.97	3,916.4	-370.3	593.2	-291.5	0.00	0.00	0.00
4,100.0	14.22	121.97	4,013.4	-383.3	614.1	-301.8	0.00	0.00	0.00
4,200.0	14.22	121.97	4,110.3	-396.3	634.9	-312.0	0.00	0.00	0.00
4,300.0	14.22	121.97	4,207.2	-409.3	655.8	-322.2	0.00	0.00	0.00
4,400.0	14.22	121.97	4,304.2	-422.4	676.6	-332.5	0.00	0.00	0.00
4,500.0	14.22	121.97	4,401.1	-435.4	697.4	-342.7	0.00	0.00	0.00
4,600.0	14.22	121.97	4,498.0	-448.4	718.3	-353.0	0.00	0.00	0.00
4,700.0	14.22	121.97	4,595.0	-461.4	739.1	-363.2	0.00	0.00	0.00

Database:	Landmark	Local Co-ordinate Reference:	Well SRC Evans D-26-23-14NHZ
Company:	Synergy Resources	TVD Reference:	WELL @ 4768.0ft (RKB - 15')
Project:	SEC.26-T5N-R66W	MD Reference:	WELL @ 4768.0ft (RKB - 15')
Site:	SRC Evans East Pad Sec.26-T5N-R66W	North Reference:	True
Well:	SRC Evans D-26-23-14NHZ	Survey Calculation Method:	Minimum Curvature
Wellbore:	Wellbore #1		
Design:	Plan #1 (10-27-14)		

Planned Survey									
Measured Depth (ft)	Inclination (°)	Azimuth (°)	Vertical Depth (ft)	+N/-S (ft)	+E/-W (ft)	Vertical Section (ft)	Dogleg Rate (°/100ft)	Build Rate (°/100ft)	Turn Rate (°/100ft)
4,800.0	14.22	121.97	4,691.9	-474.4	760.0	-373.5	0.00	0.00	0.00
4,900.0	14.22	121.97	4,788.8	-487.4	780.8	-383.7	0.00	0.00	0.00
5,000.0	14.22	121.97	4,885.8	-500.4	801.7	-393.9	0.00	0.00	0.00
5,100.0	14.22	121.97	4,982.7	-513.4	822.5	-404.2	0.00	0.00	0.00
5,200.0	14.22	121.97	5,079.6	-526.4	843.3	-414.4	0.00	0.00	0.00
5,300.0	14.22	121.97	5,176.6	-539.4	864.2	-424.7	0.00	0.00	0.00
5,400.0	14.22	121.97	5,273.5	-552.5	885.0	-434.9	0.00	0.00	0.00
5,500.0	14.22	121.97	5,370.4	-565.5	905.9	-445.1	0.00	0.00	0.00
5,600.0	14.22	121.97	5,467.4	-578.5	926.7	-455.4	0.00	0.00	0.00
5,700.0	14.22	121.97	5,564.3	-591.5	947.6	-465.6	0.00	0.00	0.00
5,800.0	14.22	121.97	5,661.2	-604.5	968.4	-475.9	0.00	0.00	0.00
5,900.0	14.22	121.97	5,758.2	-617.5	989.2	-486.1	0.00	0.00	0.00
6,000.0	14.22	121.97	5,855.1	-630.5	1,010.1	-496.4	0.00	0.00	0.00
6,100.0	14.22	121.97	5,952.1	-643.5	1,030.9	-506.6	0.00	0.00	0.00
6,200.0	14.22	121.97	6,049.0	-656.5	1,051.8	-516.8	0.00	0.00	0.00
6,230.2	14.22	121.97	6,078.3	-660.5	1,058.1	-519.9	0.00	0.00	0.00
Start DLS 8.00 TFO -121.32									
6,300.0	12.27	98.95	6,146.2	-666.2	1,072.7	-523.7	8.00	-2.80	-33.00
6,400.0	13.53	62.97	6,243.9	-662.5	1,093.6	-517.4	8.00	1.27	-35.98
6,500.0	18.49	39.79	6,340.1	-645.0	1,114.2	-497.4	8.00	4.96	-23.18
6,600.0	25.04	27.22	6,432.9	-613.9	1,134.1	-464.1	8.00	6.54	-12.57
6,700.0	32.21	19.78	6,520.7	-570.0	1,152.8	-418.1	8.00	7.18	-7.44
6,800.0	39.68	14.86	6,601.6	-513.9	1,170.1	-360.3	8.00	7.47	-4.92
6,900.0	47.29	11.29	6,674.1	-446.9	1,185.5	-291.9	8.00	7.62	-3.57
7,000.0	55.00	8.51	6,736.8	-370.3	1,198.7	-214.1	8.00	7.70	-2.78
7,100.0	62.75	6.21	6,788.5	-285.4	1,209.6	-128.6	8.00	7.75	-2.30
7,200.0	70.54	4.21	6,828.1	-194.1	1,217.9	-37.0	8.00	7.79	-2.00
7,300.0	78.35	2.40	6,854.9	-98.0	1,223.4	59.1	8.00	7.81	-1.81
7,400.0	86.16	0.68	6,868.4	1.0	1,226.1	157.6	8.00	7.82	-1.71
7,449.1	90.00	359.86	6,870.0	50.0	1,226.3	206.2	8.00	7.82	-1.68
Start 9297.0 hold at 7449.1 MD									
7,499.1	90.00	359.86	6,870.0	100.0	1,226.2	255.8	0.00	0.00	0.00
7"									
7,500.0	90.00	359.86	6,870.0	100.9	1,226.2	256.7	0.00	0.00	0.00
7,600.0	90.00	359.86	6,870.0	200.9	1,225.9	355.9	0.00	0.00	0.00
7,700.0	90.00	359.86	6,870.0	300.9	1,225.7	455.0	0.00	0.00	0.00
7,800.0	90.00	359.86	6,870.0	400.9	1,225.4	554.2	0.00	0.00	0.00
7,900.0	90.00	359.86	6,870.0	500.9	1,225.2	653.3	0.00	0.00	0.00
8,000.0	90.00	359.86	6,870.0	600.9	1,225.0	752.5	0.00	0.00	0.00
8,100.0	90.00	359.86	6,870.0	700.9	1,224.7	851.6	0.00	0.00	0.00
8,200.0	90.00	359.86	6,870.0	800.9	1,224.5	950.8	0.00	0.00	0.00
8,300.0	90.00	359.86	6,870.0	900.9	1,224.2	1,049.9	0.00	0.00	0.00
8,400.0	90.00	359.86	6,870.0	1,000.9	1,224.0	1,149.1	0.00	0.00	0.00
8,500.0	90.00	359.86	6,870.0	1,100.9	1,223.7	1,248.2	0.00	0.00	0.00
8,600.0	90.00	359.86	6,870.0	1,200.9	1,223.5	1,347.4	0.00	0.00	0.00
8,700.0	90.00	359.86	6,870.0	1,300.9	1,223.2	1,446.5	0.00	0.00	0.00
8,800.0	90.00	359.86	6,870.0	1,400.9	1,223.0	1,545.7	0.00	0.00	0.00
8,900.0	90.00	359.86	6,870.0	1,500.9	1,222.8	1,644.8	0.00	0.00	0.00
9,000.0	90.00	359.86	6,870.0	1,600.9	1,222.5	1,744.0	0.00	0.00	0.00
9,100.0	90.00	359.86	6,870.0	1,700.9	1,222.3	1,843.1	0.00	0.00	0.00
9,200.0	90.00	359.86	6,870.0	1,800.9	1,222.0	1,942.3	0.00	0.00	0.00
9,300.0	90.00	359.86	6,870.0	1,900.9	1,221.8	2,041.4	0.00	0.00	0.00
9,400.0	90.00	359.86	6,870.0	2,000.9	1,221.5	2,140.6	0.00	0.00	0.00

Database:	Landmark	Local Co-ordinate Reference:	Well SRC Evans D-26-23-14NHZ
Company:	Synergy Resources	TVD Reference:	WELL @ 4768.0ft (RKB - 15')
Project:	SEC.26-T5N-R66W	MD Reference:	WELL @ 4768.0ft (RKB - 15')
Site:	SRC Evans East Pad Sec.26-T5N-R66W	North Reference:	True
Well:	SRC Evans D-26-23-14NHZ	Survey Calculation Method:	Minimum Curvature
Wellbore:	Wellbore #1		
Design:	Plan #1 (10-27-14)		

Planned Survey									
Measured Depth (ft)	Inclination (°)	Azimuth (°)	Vertical Depth (ft)	+N/-S (ft)	+E/-W (ft)	Vertical Section (ft)	Dogleg Rate (°/100ft)	Build Rate (°/100ft)	Turn Rate (°/100ft)
9,500.0	90.00	359.86	6,870.0	2,100.9	1,221.3	2,239.7	0.00	0.00	0.00
9,600.0	90.00	359.86	6,870.0	2,200.9	1,221.0	2,338.9	0.00	0.00	0.00
9,700.0	90.00	359.86	6,870.0	2,300.9	1,220.8	2,438.0	0.00	0.00	0.00
9,800.0	90.00	359.86	6,870.0	2,400.9	1,220.6	2,537.2	0.00	0.00	0.00
9,900.0	90.00	359.86	6,870.0	2,500.9	1,220.3	2,636.3	0.00	0.00	0.00
10,000.0	90.00	359.86	6,870.0	2,600.9	1,220.1	2,735.5	0.00	0.00	0.00
10,100.0	90.00	359.86	6,870.0	2,700.9	1,219.8	2,834.6	0.00	0.00	0.00
10,200.0	90.00	359.86	6,870.0	2,800.9	1,219.6	2,933.8	0.00	0.00	0.00
10,300.0	90.00	359.86	6,870.0	2,900.9	1,219.3	3,032.9	0.00	0.00	0.00
10,400.0	90.00	359.86	6,870.0	3,000.9	1,219.1	3,132.1	0.00	0.00	0.00
10,500.0	90.00	359.86	6,870.0	3,100.9	1,218.8	3,231.2	0.00	0.00	0.00
10,600.0	90.00	359.86	6,870.0	3,200.9	1,218.6	3,330.4	0.00	0.00	0.00
10,700.0	90.00	359.86	6,870.0	3,300.9	1,218.4	3,429.5	0.00	0.00	0.00
10,800.0	90.00	359.86	6,870.0	3,400.9	1,218.1	3,528.7	0.00	0.00	0.00
10,900.0	90.00	359.86	6,870.0	3,500.9	1,217.9	3,627.8	0.00	0.00	0.00
11,000.0	90.00	359.86	6,870.0	3,600.9	1,217.6	3,727.0	0.00	0.00	0.00
11,100.0	90.00	359.86	6,870.0	3,700.9	1,217.4	3,826.1	0.00	0.00	0.00
11,200.0	90.00	359.86	6,870.0	3,800.9	1,217.1	3,925.3	0.00	0.00	0.00
11,300.0	90.00	359.86	6,870.0	3,900.9	1,216.9	4,024.4	0.00	0.00	0.00
11,400.0	90.00	359.86	6,870.0	4,000.9	1,216.6	4,123.6	0.00	0.00	0.00
11,500.0	90.00	359.86	6,870.0	4,100.9	1,216.4	4,222.7	0.00	0.00	0.00
11,600.0	90.00	359.86	6,870.0	4,200.9	1,216.2	4,321.9	0.00	0.00	0.00
11,700.0	90.00	359.86	6,870.0	4,300.9	1,215.9	4,421.0	0.00	0.00	0.00
11,800.0	90.00	359.86	6,870.0	4,400.9	1,215.7	4,520.2	0.00	0.00	0.00
11,900.0	90.00	359.86	6,870.0	4,500.9	1,215.4	4,619.3	0.00	0.00	0.00
12,000.0	90.00	359.86	6,870.0	4,600.9	1,215.2	4,718.5	0.00	0.00	0.00
12,100.0	90.00	359.86	6,870.0	4,700.9	1,214.9	4,817.6	0.00	0.00	0.00
12,200.0	90.00	359.86	6,870.0	4,800.9	1,214.7	4,916.8	0.00	0.00	0.00
12,300.0	90.00	359.86	6,870.0	4,900.9	1,214.4	5,015.9	0.00	0.00	0.00
12,400.0	90.00	359.86	6,870.0	5,000.9	1,214.2	5,115.1	0.00	0.00	0.00
12,500.0	90.00	359.86	6,870.0	5,100.9	1,214.0	5,214.2	0.00	0.00	0.00
12,600.0	90.00	359.86	6,870.0	5,200.9	1,213.7	5,313.4	0.00	0.00	0.00
12,700.0	90.00	359.86	6,870.0	5,300.9	1,213.5	5,412.5	0.00	0.00	0.00
12,800.0	90.00	359.86	6,870.0	5,400.9	1,213.2	5,511.7	0.00	0.00	0.00
12,900.0	90.00	359.86	6,870.0	5,500.9	1,213.0	5,610.8	0.00	0.00	0.00
13,000.0	90.00	359.86	6,870.0	5,600.9	1,212.7	5,709.9	0.00	0.00	0.00
13,100.0	90.00	359.86	6,870.0	5,700.9	1,212.5	5,809.1	0.00	0.00	0.00
13,200.0	90.00	359.86	6,870.0	5,800.9	1,212.2	5,908.2	0.00	0.00	0.00
13,300.0	90.00	359.86	6,870.0	5,900.9	1,212.0	6,007.4	0.00	0.00	0.00
13,400.0	90.00	359.86	6,870.0	6,000.9	1,211.8	6,106.5	0.00	0.00	0.00
13,500.0	90.00	359.86	6,870.0	6,100.9	1,211.5	6,205.7	0.00	0.00	0.00
13,600.0	90.00	359.86	6,870.0	6,200.9	1,211.3	6,304.8	0.00	0.00	0.00
13,700.0	90.00	359.86	6,870.0	6,300.9	1,211.0	6,404.0	0.00	0.00	0.00
13,800.0	90.00	359.86	6,870.0	6,400.9	1,210.8	6,503.1	0.00	0.00	0.00
13,900.0	90.00	359.86	6,870.0	6,500.9	1,210.5	6,602.3	0.00	0.00	0.00
14,000.0	90.00	359.86	6,870.0	6,600.9	1,210.3	6,701.4	0.00	0.00	0.00
14,100.0	90.00	359.86	6,870.0	6,700.9	1,210.0	6,800.6	0.00	0.00	0.00
14,200.0	90.00	359.86	6,870.0	6,800.9	1,209.8	6,899.7	0.00	0.00	0.00
14,300.0	90.00	359.86	6,870.0	6,900.9	1,209.6	6,998.9	0.00	0.00	0.00
14,400.0	90.00	359.86	6,870.0	7,000.9	1,209.3	7,098.0	0.00	0.00	0.00
14,500.0	90.00	359.86	6,870.0	7,100.9	1,209.1	7,197.2	0.00	0.00	0.00
14,600.0	90.00	359.86	6,870.0	7,200.9	1,208.8	7,296.3	0.00	0.00	0.00
14,700.0	90.00	359.86	6,870.0	7,300.9	1,208.6	7,395.5	0.00	0.00	0.00
14,800.0	90.00	359.86	6,870.0	7,400.9	1,208.3	7,494.6	0.00	0.00	0.00

Casing Points						
	Measured Depth (ft)	Vertical Depth (ft)		Name	Casing Diameter (")	Hole Diameter (")
	7,499.1	6,870.0	7"		7	7-1/2

Database:	Landmark	Local Co-ordinate Reference:	Well SRC Evans D-26-23-14NHZ
Company:	Synergy Resources	TVD Reference:	WELL @ 4768.0ft (RKB - 15')
Project:	SEC.26-T5N-R66W	MD Reference:	WELL @ 4768.0ft (RKB - 15')
Site:	SRC Evans East Pad Sec.26-T5N-R66W	North Reference:	True
Well:	SRC Evans D-26-23-14NHZ	Survey Calculation Method:	Minimum Curvature
Wellbore:	Wellbore #1		
Design:	Plan #1 (10-27-14)		

Plan Annotations				
Measured Depth (ft)	Vertical Depth (ft)	Local Coordinates		Comment
		+N/-S (ft)	+E/-W (ft)	
800.0	800.0	0.0	0.0	KOP - Start Build 2.00
1,511.2	1,503.9	-46.5	74.5	Start 4719.1 hold at 1511.2 MD
6,230.2	6,078.3	-660.5	1,058.1	Start DLS 8.00 TFO -121.32
7,449.1	6,870.0	50.0	1,226.3	Start 9297.0 hold at 7449.1 MD
16,746.0	6,870.0	9,346.9	1,203.6	TD at 16746.0



Synergy Resources

SEC.26-T5N-R66W

SRC Evans East Pad Sec.26-T5N-R66W

SRC Evans D-26-23-14NHZ

Wellbore #1

Plan #1 (10-27-14)

Anticollision Report

30 October, 2014

Company:	Synergy Resources	Local Co-ordinate Reference:	Well SRC Evans D-26-23-14NHZ
Project:	SEC.26-T5N-R66W	TVD Reference:	WELL @ 4768.0ft (RKB - 15')
Reference Site:	SRC Evans East Pad Sec.26-T5N-R66W	MD Reference:	WELL @ 4768.0ft (RKB - 15')
Site Error:	0.0ft	North Reference:	True
Reference Well:	SRC Evans D-26-23-14NHZ	Survey Calculation Method:	Minimum Curvature
Well Error:	0.0ft	Output errors are at	2.00 sigma
Reference Wellbore	Wellbore #1	Database:	Landmark
Reference Design:	Plan #1 (10-27-14)	Offset TVD Reference:	Offset Datum

Reference	Plan #1 (10-27-14)		
Filter type:	NO GLOBAL FILTER: Using user defined selection & filtering criteria		
Interpolation Method:	Stations	Error Model:	ISCSWA
Depth Range:	Unlimited	Scan Method:	Closest Approach 3D
Results Limited by:	Maximum center-center distance of 800.0ft	Error Surface:	Elliptical Conic
Warning Levels Evaluated at:	2.00 Sigma		

Survey Tool Program		Date	10/30/2014		
From (ft)	To (ft)	Survey (Wellbore)	Tool Name	Description	
0.0	16,746.0	Plan #1 (10-27-14) (Wellbore #1)	MWD	MWD - Standard	

Summary							
Site Name Offset Well - Wellbore - Design	Reference Measured Depth (ft)	Offset Measured Depth (ft)	Distance Between Centres (ft)	Distance Between Ellipses (ft)	Separation Factor	Warning	
Existing Wells Sec.26-T5N-R66W							
Bierig 1-26B (Exist) - Wellbore #1 - Wellbore #1	8,819.7	6,877.0	222.0	48.4	1.279	Level 3, CC, ES, SF	
Gilbert #1 (Exist) - Wellbore #1 - Wellbore #1	16,227.0	6,952.0	94.6	-218.1	0.303	Level 1, CC, ES, SF	
Mantel J 23-16 (P&A) - Wellbore #1 - Wellbore #1	9,911.3	6,911.0	32.3	-160.7	0.168	Level 1, CC, ES, SF	
Mantel J23-9 (P&A) - Wellbore #1 - Wellbore #1	11,164.5	6,924.0	38.1	-178.1	0.176	Level 1, CC, ES, SF	
SRC Evans Center Pad Sec.26-T5N-R66W							
SRC Evans 33-26-23-14NHZ - Wellbore #1 - Plan #1 (10	800.0	796.0	462.2	458.8	137.448	CC, ES	
SRC Evans 33-26-23-14NHZ - Wellbore #1 - Plan #1 (10	5,200.0	5,262.9	797.3	763.1	23.295	SF	
SRC Evans P-26-23-14CHZ - Wellbore #1 - Plan #1 (10-	800.0	795.0	459.7	456.4	136.820	CC, ES	
SRC Evans P-26-23-14CHZ - Wellbore #1 - Plan #1 (10-	3,500.0	3,497.8	799.9	780.0	40.048	SF	
SRC Evans East Pad Sec.26-T5N-R66W							
SRC Evans 33-26-23-14CHZ - Wellbore #1 - Plan #1 (10	1,151.3	1,146.3	61.4	56.6	12.702	CC, ES	
SRC Evans 33-26-23-14CHZ - Wellbore #1 - Plan #1 (10	1,400.0	1,391.0	69.4	63.4	11.473	SF	
SRC Evans 43-26-23-14CHZ - Wellbore #1 - Plan #1 (10	578.3	581.5	62.4	60.0	26.030	CC	
SRC Evans 43-26-23-14CHZ - Wellbore #1 - Plan #1 (10	600.0	602.9	62.5	60.0	25.005	ES	
SRC Evans 43-26-23-14CHZ - Wellbore #1 - Plan #1 (10	6,300.0	6,257.3	623.2	577.0	13.514	SF	
SRC Evans 43-26-23-14NHZ - Wellbore #1 - Plan #1 (10	727.1	728.8	41.1	38.0	13.631	CC, ES	
SRC Evans 43-26-23-14NHZ - Wellbore #1 - Plan #1 (10	16,746.0	16,857.4	551.3	185.1	1.505	SF	
SRC Evans D-26-23-14CHZ - Wellbore #1 - Plan #1 (10-	843.4	844.8	20.1	16.5	5.708	CC, ES	
SRC Evans D-26-23-14CHZ - Wellbore #1 - Plan #1 (10-	16,746.0	17,114.9	429.3	172.8	1.674	SF	
SRC Evans S-26-23-14CHZ - Wellbore #1 - Plan #1 (10-	1,062.7	1,061.3	19.2	14.8	4.297	CC, ES	
SRC Evans S-26-23-14CHZ - Wellbore #1 - Plan #1 (10-	16,746.0	17,016.1	430.5	164.4	1.617	SF	
SRC Evans S-26-23-14NHZ - Wellbore #1 - Plan #1 (10-	1,169.0	1,166.0	38.0	33.0	7.649	CC, ES	
SRC Evans S-26-23-14NHZ - Wellbore #1 - Plan #1 (10-	16,746.0	16,650.2	550.9	183.0	1.498	Level 3, SF	

Offset Design												Offset Site Error:	0.0 ft
Existing Wells Sec.26-T5N-R66W - Bierig 1-26B (Exist) - Wellbore #1 - Wellbore #1												Offset Well Error:	0.0 ft
Reference		Offset		Semi Major Axis			Distance						Warning
Measured Depth	Vertical Depth	Measured Depth	Vertical Depth	Reference	Offset	Highside Toolface	Offset +N/-S	Wellbore Centre +E/-W	Between Centres	Between Ellipses	Minimum Separation	Separation Factor	
(ft)	(ft)	(ft)	(ft)	(ft)	(ft)	(°)	(ft)	(ft)	(ft)	(ft)	(ft)	(ft)	
8,100.0	6,870.0	6,877.0	6,877.0	29.8	137.5	90.00	1,421.2	1,444.9	753.2	590.1	163.09	4.618	
8,200.0	6,870.0	6,877.0	6,877.0	30.8	137.5	90.00	1,421.2	1,444.9	658.3	493.9	164.36	4.005	
8,300.0	6,870.0	6,877.0	6,877.0	31.9	137.5	90.00	1,421.2	1,444.9	565.1	399.4	165.71	3.410	
8,400.0	6,870.0	6,877.0	6,877.0	33.1	137.5	90.00	1,421.2	1,444.9	474.8	307.7	167.12	2.841	

Company:	Synergy Resources	Local Co-ordinate Reference:	Well SRC Evans D-26-23-14NHZ
Project:	SEC.26-T5N-R66W	TVD Reference:	WELL @ 4768.0ft (RKB - 15')
Reference Site:	SRC Evans East Pad Sec.26-T5N-R66W	MD Reference:	WELL @ 4768.0ft (RKB - 15')
Site Error:	0.0ft	North Reference:	True
Reference Well:	SRC Evans D-26-23-14NHZ	Survey Calculation Method:	Minimum Curvature
Well Error:	0.0ft	Output errors are at	2.00 sigma
Reference Wellbore	Wellbore #1	Database:	Landmark
Reference Design:	Plan #1 (10-27-14)	Offset TVD Reference:	Offset Datum

Offset Design Existing Wells Sec.26-T5N-R66W - Bierig 1-26B (Exist) - Wellbore #1 - Wellbore #1												Offset Site Error:	0.0 ft
Survey Program: 7833-UNKNOWN												Offset Well Error:	0.0 ft
Reference	Offset	Semi Major Axis		Distance									
Measured Depth (ft)	Vertical Depth (ft)	Measured Depth (ft)	Vertical Depth (ft)	Reference (ft)	Offset (ft)	Highside Toolface (°)	Offset Wellbore Centre +N/-S (ft)	+E/-W (ft)	Between Centres (ft)	Between Ellipses (ft)	Minimum Separation (ft)	Separation Factor	Warning
8,500.0	6,870.0	6,877.0	6,877.0	34.4	137.5	90.00	1,421.2	1,444.9	389.2	220.6	168.58	2.309	
8,600.0	6,870.0	6,877.0	6,877.0	35.8	137.5	90.00	1,421.2	1,444.9	312.3	142.2	170.10	1.836	
8,700.0	6,870.0	6,877.0	6,877.0	37.2	137.5	90.00	1,421.2	1,444.9	252.2	80.6	171.65	1.469	Level 3
8,800.0	6,870.0	6,877.0	6,877.0	38.7	137.5	90.00	1,421.2	1,444.9	222.8	49.6	173.24	1.286	Level 3
8,819.7	6,870.0	6,877.0	6,877.0	39.0	137.5	90.00	1,421.2	1,444.9	222.0	48.4	173.56	1.279	Level 3, CC, ES, SF
8,900.0	6,870.0	6,877.0	6,877.0	40.2	137.5	90.00	1,421.2	1,444.9	236.0	61.2	174.86	1.350	Level 3
9,000.0	6,870.0	6,877.0	6,877.0	41.8	137.5	90.00	1,421.2	1,444.9	286.0	109.4	176.50	1.620	
9,100.0	6,870.0	6,877.0	6,877.0	43.4	137.5	90.00	1,421.2	1,444.9	357.5	179.3	178.18	2.007	
9,200.0	6,870.0	6,877.0	6,877.0	45.0	137.5	90.00	1,421.2	1,444.9	440.3	260.4	179.87	2.448	
9,300.0	6,870.0	6,877.0	6,877.0	46.6	137.5	90.00	1,421.2	1,444.9	529.1	347.5	181.58	2.914	
9,400.0	6,870.0	6,877.0	6,877.0	48.3	137.5	90.00	1,421.2	1,444.9	621.3	438.0	183.31	3.389	
9,500.0	6,870.0	6,877.0	6,877.0	50.0	137.5	90.00	1,421.2	1,444.9	715.6	530.5	185.05	3.867	

Company:	Synergy Resources	Local Co-ordinate Reference:	Well SRC Evans D-26-23-14NHZ
Project:	SEC.26-T5N-R66W	TVD Reference:	WELL @ 4768.0ft (RKB - 15')
Reference Site:	SRC Evans East Pad Sec.26-T5N-R66W	MD Reference:	WELL @ 4768.0ft (RKB - 15')
Site Error:	0.0ft	North Reference:	True
Reference Well:	SRC Evans D-26-23-14NHZ	Survey Calculation Method:	Minimum Curvature
Well Error:	0.0ft	Output errors are at	2.00 sigma
Reference Wellbore	Wellbore #1	Database:	Landmark
Reference Design:	Plan #1 (10-27-14)	Offset TVD Reference:	Offset Datum

Offset Design Existing Wells Sec.26-T5N-R66W - Gilbert #1 (Exist) - Wellbore #1 - Wellbore #1												Offset Site Error: 0.0 ft	
Survey Program: 7877-UNKNOWN												Offset Well Error: 0.0 ft	
Reference		Offset		Semi Major Axis		Distance							Warning
Measured Depth (ft)	Vertical Depth (ft)	Measured Depth (ft)	Vertical Depth (ft)	Reference (ft)	Offset (ft)	Highside Toolface (°)	Offset Wellbore Centre +N/-S (ft)	+E/-W (ft)	Between Centres (ft)	Between Ellipses (ft)	Minimum Separation (ft)	Separation Factor	
15,500.0	6,870.0	6,952.0	6,952.0	160.7	139.0	-90.00	8,827.7	1,110.2	733.1	434.3	298.81	2.453	
15,600.0	6,870.0	6,952.0	6,952.0	162.6	139.0	-90.00	8,827.7	1,110.2	634.1	333.3	300.71	2.109	
15,700.0	6,870.0	6,952.0	6,952.0	164.5	139.0	-90.00	8,827.7	1,110.2	535.4	232.8	302.62	1.769	
15,800.0	6,870.0	6,952.0	6,952.0	166.4	139.0	-90.00	8,827.7	1,110.2	437.3	132.8	304.53	1.436	Level 3
15,900.0	6,870.0	6,952.0	6,952.0	168.3	139.0	-90.00	8,827.7	1,110.2	340.4	33.9	306.44	1.111	Level 2
16,000.0	6,870.0	6,952.0	6,952.0	170.2	139.0	-90.00	8,827.7	1,110.2	245.9	-62.5	308.35	0.797	Level 1
16,100.0	6,870.0	6,952.0	6,952.0	172.1	139.0	-90.00	8,827.7	1,110.2	158.3	-151.9	310.25	0.510	Level 1
16,200.0	6,870.0	6,952.0	6,952.0	174.0	139.0	-90.00	8,827.7	1,110.2	98.4	-213.8	312.16	0.315	Level 1
16,227.0	6,870.0	6,952.0	6,952.0	174.5	139.0	-90.00	8,827.7	1,110.2	94.6	-218.1	312.68	0.303	Level 1, CC, ES, SF
16,300.0	6,870.0	6,952.0	6,952.0	175.9	139.0	-90.00	8,827.7	1,110.2	119.5	-194.6	314.07	0.381	Level 1
16,400.0	6,870.0	6,952.0	6,952.0	177.8	139.0	-90.00	8,827.7	1,110.2	197.2	-118.8	315.98	0.624	Level 1
16,500.0	6,870.0	6,952.0	6,952.0	179.7	139.0	-90.00	8,827.7	1,110.2	289.0	-28.9	317.89	0.909	Level 1
16,600.0	6,870.0	6,952.0	6,952.0	181.6	139.0	-90.00	8,827.7	1,110.2	384.8	65.0	319.80	1.203	Level 2
16,700.0	6,870.0	6,952.0	6,952.0	183.5	139.0	-90.00	8,827.7	1,110.2	482.4	160.7	321.71	1.500	Level 3
16,746.0	6,870.0	6,952.0	6,952.0	184.3	139.0	-90.00	8,827.7	1,110.2	527.6	205.0	322.59	1.636	

Company:	Synergy Resources	Local Co-ordinate Reference:	Well SRC Evans D-26-23-14NHZ
Project:	SEC.26-T5N-R66W	TVD Reference:	WELL @ 4768.0ft (RKB - 15')
Reference Site:	SRC Evans East Pad Sec.26-T5N-R66W	MD Reference:	WELL @ 4768.0ft (RKB - 15')
Site Error:	0.0ft	North Reference:	True
Reference Well:	SRC Evans D-26-23-14NHZ	Survey Calculation Method:	Minimum Curvature
Well Error:	0.0ft	Output errors are at	2.00 sigma
Reference Wellbore	Wellbore #1	Database:	Landmark
Reference Design:	Plan #1 (10-27-14)	Offset TVD Reference:	Offset Datum

Offset Design Existing Wells Sec.26-T5N-R66W - Mantel J 23-16 (P&A) - Wellbore #1 - Wellbore #1												Offset Site Error:	0.0 ft
Survey Program: 7460-UNKNOWN												Offset Well Error:	0.0 ft
Reference		Offset		Semi Major Axis			Distance						
Measured Depth (ft)	Vertical Depth (ft)	Measured Depth (ft)	Vertical Depth (ft)	Reference (ft)	Offset (ft)	Highside Toolface (°)	Offset Wellbore Centre +N/-S (ft)	+E/-W (ft)	Between Centres (ft)	Between Ellipses (ft)	Minimum Separation (ft)	Separation Factor	Warning
9,200.0	6,870.0	6,911.0	6,911.0	45.0	138.2	90.00	2,512.3	1,252.6	712.0	531.5	180.55	3.944	
9,300.0	6,870.0	6,911.0	6,911.0	46.6	138.2	90.00	2,512.3	1,252.6	612.2	429.9	182.26	3.359	
9,400.0	6,870.0	6,911.0	6,911.0	48.3	138.2	90.00	2,512.3	1,252.6	512.3	328.3	183.99	2.785	
9,500.0	6,870.0	6,911.0	6,911.0	50.0	138.2	90.00	2,512.3	1,252.6	412.6	226.8	185.73	2.221	
9,600.0	6,870.0	6,911.0	6,911.0	51.7	138.2	90.00	2,512.3	1,252.6	313.0	125.5	187.49	1.669	
9,700.0	6,870.0	6,911.0	6,911.0	53.4	138.2	90.00	2,512.3	1,252.6	213.8	24.5	189.26	1.129	Level 2
9,800.0	6,870.0	6,911.0	6,911.0	55.1	138.2	90.00	2,512.3	1,252.6	115.9	-75.1	191.04	0.607	Level 1
9,900.0	6,870.0	6,911.0	6,911.0	56.8	138.2	90.00	2,512.3	1,252.6	34.3	-158.6	192.82	0.178	Level 1
9,911.3	6,870.0	6,911.0	6,911.0	57.0	138.2	90.00	2,512.3	1,252.6	32.3	-160.7	193.03	0.168	Level 1, CC, ES, SF
10,000.0	6,870.0	6,911.0	6,911.0	58.6	138.2	90.00	2,512.3	1,252.6	94.4	-100.2	194.62	0.485	Level 1
10,100.0	6,870.0	6,911.0	6,911.0	60.3	138.2	90.00	2,512.3	1,252.6	191.5	-5.0	196.43	0.975	Level 1
10,200.0	6,870.0	6,911.0	6,911.0	62.1	138.2	90.00	2,512.3	1,252.6	290.5	92.3	198.24	1.465	Level 3
10,300.0	6,870.0	6,911.0	6,911.0	63.9	138.2	90.00	2,512.3	1,252.6	390.0	190.0	200.06	1.950	
10,400.0	6,870.0	6,911.0	6,911.0	65.6	138.2	90.00	2,512.3	1,252.6	489.8	287.9	201.88	2.426	
10,500.0	6,870.0	6,911.0	6,911.0	67.4	138.2	90.00	2,512.3	1,252.6	589.6	385.9	203.71	2.894	
10,600.0	6,870.0	6,911.0	6,911.0	69.2	138.2	90.00	2,512.3	1,252.6	689.5	483.9	205.55	3.354	
10,700.0	6,870.0	6,911.0	6,911.0	71.0	138.2	90.00	2,512.3	1,252.6	789.4	582.0	207.39	3.806	

Company:	Synergy Resources	Local Co-ordinate Reference:	Well SRC Evans D-26-23-14NHZ
Project:	SEC.26-T5N-R66W	TVD Reference:	WELL @ 4768.0ft (RKB - 15')
Reference Site:	SRC Evans East Pad Sec.26-T5N-R66W	MD Reference:	WELL @ 4768.0ft (RKB - 15')
Site Error:	0.0ft	North Reference:	True
Reference Well:	SRC Evans D-26-23-14NHZ	Survey Calculation Method:	Minimum Curvature
Well Error:	0.0ft	Output errors are at	2.00 sigma
Reference Wellbore	Wellbore #1	Database:	Landmark
Reference Design:	Plan #1 (10-27-14)	Offset TVD Reference:	Offset Datum

Offset Design Existing Wells Sec.26-T5N-R66W - Mantel J23-9 (P&A) - Wellbore #1 - Wellbore #1												Offset Site Error:	0.0 ft
Survey Program: 7435-UNKNOWN												Offset Well Error:	0.0 ft
Reference		Offset		Semi Major Axis			Distance						Warning
Measured Depth (ft)	Vertical Depth (ft)	Measured Depth (ft)	Vertical Depth (ft)	Reference (ft)	Offset (ft)	Highside Toolface (°)	Offset Wellbore Centre +N/-S (ft)	+E/-W (ft)	Between Centres (ft)	Between Ellipses (ft)	Minimum Separation (ft)	Separation Factor	
10,400.0	6,870.0	6,924.0	6,924.0	65.6	138.5	90.00	3,765.5	1,255.3	765.5	563.3	202.14	3.787	
10,500.0	6,870.0	6,924.0	6,924.0	67.4	138.5	90.00	3,765.5	1,255.3	665.6	461.6	203.97	3.263	
10,600.0	6,870.0	6,924.0	6,924.0	69.2	138.5	90.00	3,765.5	1,255.3	565.8	360.0	205.81	2.749	
10,700.0	6,870.0	6,924.0	6,924.0	71.0	138.5	90.00	3,765.5	1,255.3	466.1	258.4	207.65	2.245	
10,800.0	6,870.0	6,924.0	6,924.0	72.8	138.5	90.00	3,765.5	1,255.3	366.5	157.0	209.49	1.749	
10,900.0	6,870.0	6,924.0	6,924.0	74.6	138.5	90.00	3,765.5	1,255.3	267.2	55.9	211.34	1.265	Level 3
11,000.0	6,870.0	6,924.0	6,924.0	76.5	138.5	90.00	3,765.5	1,255.3	168.9	-44.3	213.20	0.792	Level 1
11,100.0	6,870.0	6,924.0	6,924.0	78.3	138.5	90.00	3,765.5	1,255.3	74.9	-140.1	215.05	0.348	Level 1
11,164.5	6,870.0	6,924.0	6,924.0	79.5	138.5	90.00	3,765.5	1,255.3	38.1	-178.1	216.25	0.176	Level 1, CC, ES, SF
11,200.0	6,870.0	6,924.0	6,924.0	80.1	138.5	90.00	3,765.5	1,255.3	52.1	-164.8	216.91	0.240	Level 1
11,300.0	6,870.0	6,924.0	6,924.0	81.9	138.5	90.00	3,765.5	1,255.3	140.7	-78.0	218.77	0.643	Level 1
11,400.0	6,870.0	6,924.0	6,924.0	83.8	138.5	90.00	3,765.5	1,255.3	238.5	17.9	220.64	1.081	Level 2
11,500.0	6,870.0	6,924.0	6,924.0	85.6	138.5	90.00	3,765.5	1,255.3	337.6	115.1	222.50	1.517	
11,600.0	6,870.0	6,924.0	6,924.0	87.4	138.5	90.00	3,765.5	1,255.3	437.1	212.8	224.37	1.948	
11,700.0	6,870.0	6,924.0	6,924.0	89.3	138.5	90.00	3,765.5	1,255.3	536.8	310.6	226.24	2.373	
11,800.0	6,870.0	6,924.0	6,924.0	91.1	138.5	90.00	3,765.5	1,255.3	636.6	408.5	228.12	2.791	
11,900.0	6,870.0	6,924.0	6,924.0	93.0	138.5	90.00	3,765.5	1,255.3	736.5	506.5	229.99	3.202	

SRC Evans Center Pad Sec.26-T5N-R66W - SRC Evans 33-26-23-14NHZ - Wellbore #1 - Plan #1 (10-													Offset Site Error:	0.0 ft
Survey Program: 0-MWD													Offset Well Error:	0.0 ft
Reference		Offset		Semi Major Axis			Distance							
Measured Depth	Vertical Depth	Measured Depth	Vertical Depth	Reference	Offset	Highside Toolface	Offset Wellbore Centre		Between Centres	Between Ellipses	Minimum Separation	Separation Factor	Warning	
(ft)	(ft)	(ft)	(ft)	(ft)	(ft)	(°)	+N/-S (ft)	+E/-W (ft)	(ft)	(ft)	(ft)			
0.0	0.0	0.0	0.0	0.0	0.0	-84.48	44.5	-460.0	462.2					
100.0	100.0	96.0	96.0	0.1	0.1	-84.48	44.5	-460.0	462.2	461.9	0.22	2,098.111		
200.0	200.0	196.0	196.0	0.3	0.3	-84.48	44.5	-460.0	462.2	461.5	0.67	694.670		
300.0	300.0	296.0	296.0	0.6	0.6	-84.48	44.5	-460.0	462.2	461.1	1.11	414.561		
400.0	400.0	396.0	396.0	0.8	0.8	-84.48	44.5	-460.0	462.2	460.6	1.56	295.434		
500.0	500.0	496.0	496.0	1.0	1.0	-84.48	44.5	-460.0	462.2	460.2	2.01	229.489		
600.0	600.0	596.0	596.0	1.2	1.2	-84.48	44.5	-460.0	462.2	459.7	2.46	187.612		
700.0	700.0	696.0	696.0	1.5	1.5	-84.48	44.5	-460.0	462.2	459.3	2.91	158.659		
800.0	800.0	796.0	796.0	1.7	1.7	-84.48	44.5	-460.0	462.2	458.8	3.36	137.448	CC, ES	
900.0	900.0	896.0	896.0	1.9	1.9	153.63	44.5	-460.0	463.7	459.9	3.79	122.334		
1,000.0	999.8	995.8	995.8	2.1	2.1	153.87	44.5	-460.0	468.4	464.2	4.20	111.449		
1,100.0	1,099.5	1,095.5	1,095.5	2.3	2.3	154.26	44.5	-460.0	476.3	471.6	4.62	103.056		
1,200.0	1,198.7	1,194.7	1,194.7	2.5	2.6	154.79	44.5	-460.0	487.3	482.2	5.05	96.572		
1,300.0	1,297.5	1,307.3	1,307.3	2.8	2.8	155.39	42.9	-458.7	500.2	494.7	5.48	91.356		
1,400.0	1,395.6	1,421.2	1,421.0	3.1	3.0	155.80	37.9	-454.6	513.4	507.6	5.89	87.107		
1,500.0	1,493.1	1,535.8	1,535.0	3.5	3.2	156.04	29.4	-447.4	526.9	520.6	6.34	83.098		
1,511.2	1,503.9	1,548.6	1,547.7	3.6	3.3	156.05	28.2	-446.4	528.4	522.0	6.39	82.659		
1,600.0	1,590.0	1,651.0	1,649.1	3.9	3.5	156.13	17.3	-437.3	539.4	532.5	6.85	78.756		
1,700.0	1,686.9	1,767.0	1,763.3	4.4	3.8	155.91	1.5	-424.2	548.8	541.4	7.41	74.108		
1,800.0	1,783.9	1,873.7	1,867.6	4.9	4.2	155.46	-15.6	-409.8	555.8	547.8	7.99	69.583		
1,900.0	1,880.8	1,973.4	1,965.0	5.4	4.5	155.03	-32.0	-396.2	562.5	553.9	8.59	65.514		
2,000.0	1,977.7	2,073.1	2,062.4	5.8	4.9	154.61	-48.3	-382.6	569.3	560.1	9.21	61.828		
2,100.0	2,074.7	2,172.7	2,159.8	6.3	5.3	154.20	-64.6	-368.9	576.1	566.2	9.85	58.468		
2,200.0	2,171.6	2,272.4	2,257.2	6.9	5.7	153.79	-81.0	-355.3	582.9	572.4	10.52	55.425		
2,300.0	2,268.5	2,372.1	2,354.6	7.4	6.1	153.40	-97.3	-341.6	589.8	578.6	11.20	52.671		
2,400.0	2,365.5	2,471.8	2,451.9	7.9	6.5	153.02	-113.6	-328.0	596.6	584.7	11.89	50.173		
2,500.0	2,462.4	2,571.5	2,549.3	8.4	6.9	152.64	-130.0	-314.4	603.5	590.9	12.60	47.903		
2,600.0	2,559.3	2,671.2	2,646.7	8.9	7.4	152.27	-146.3	-300.7	610.5	597.2	13.32	45.837		
2,700.0	2,656.3	2,770.8	2,744.1	9.4	7.8	151.92	-162.6	-287.1	617.4	603.4	14.05	43.951		
2,800.0	2,753.2	2,870.5	2,841.5	9.9	8.2	151.57	-178.9	-273.4	624.4	609.6	14.79	42.226		
2,900.0	2,850.1	2,970.2	2,938.9	10.5	8.7	151.22	-195.3	-259.8	631.4	615.9	15.54	40.643		
3,000.0	2,947.1	3,069.9	3,036.3	11.0	9.1	150.89	-211.6	-246.1	638.4	622.1	16.29	39.187		
3,100.0	3,044.0	3,169.6	3,133.6	11.5	9.6	150.56	-227.9	-232.5	645.5	628.4	17.06	37.846		
3,200.0	3,140.9	3,269.3	3,231.0	12.1	10.0	150.24	-244.3	-218.9	652.5	634.7	17.83	36.606		
3,300.0	3,237.9	3,368.9	3,328.4	12.6	10.5	149.92	-260.6	-205.2	659.6	641.0	18.60	35.457		
3,400.0	3,334.8	3,468.6	3,425.8	13.1	10.9	149.62	-276.9	-191.6	666.7	647.3	19.39	34.391		
3,500.0	3,431.8	3,568.3	3,523.2	13.6	11.4	149.32	-293.3	-177.9	673.9	653.7	20.18	33.399		
3,600.0	3,528.7	3,668.0	3,620.6	14.2	11.9	149.02	-309.6	-164.3	681.0	660.0	20.97	32.474		
3,700.0	3,625.6	3,767.7	3,718.0	14.7	12.3	148.73	-325.9	-150.7	688.2	666.4	21.77	31.611		
3,800.0	3,722.6	3,867.4	3,815.3	15.2	12.8	148.45	-342.3	-137.0	695.3	672.8	22.57	30.802		
3,900.0	3,819.5	3,967.0	3,912.7	15.8	13.2	148.17	-358.6	-123.4	702.5	679.1	23.38	30.044		
4,000.0	3,916.4	4,066.7	4,010.1	16.3	13.7	147.90	-374.9	-109.7	709.7	685.5	24.20	29.333		
4,100.0	4,013.4	4,166.4	4,107.5	16.8	14.2	147.64	-391.3	-96.1	717.0	691.9	25.01	28.663		
4,200.0	4,110.3	4,266.1	4,204.9	17.4	14.6	147.38	-407.6	-82.4	724.2	698.4	25.83	28.032		
4,300.0	4,207.2	4,365.8	4,302.3	17.9	15.1	147.12	-423.9	-68.8	731.4	704.8	26.66	27.437		
4,400.0	4,304.2	4,465.5	4,399.7	18.4	15.6	146.87	-440.3	-55.2	738.7	711.2	27.49	26.874		
4,500.0	4,401.1	4,565.2	4,497.1	18.9	16.0	146.62	-456.6	-41.5	746.0	717.7	28.32	26.342		
4,600.0	4,498.0	4,664.8	4,594.4	19.5	16.5	146.38	-472.9	-27.9	753.3	724.1	29.15	25.838		
4,700.0	4,595.0	4,764.5	4,691.8	20.0	17.0	146.15	-489.2	-14.2	760.6	730.6	29.99	25.359		
4,800.0	4,691.9	4,864.2	4,789.2	20.5	17.4	145.92	-505.6	-0.6	767.9	737.1	30.83	24.905		
4,900.0	4,788.8	4,963.9	4,886.6	21.1	17.9	145.69	-521.9	13.0	775.3	743.6	31.68	24.473		
5,000.0	4,885.8	5,063.6	4,984.0	21.6	18.4	145.47	-538.2	26.7	782.6	750.1	32.53	24.061		

Company:	Synergy Resources	Local Co-ordinate Reference:	Well SRC Evans D-26-23-14NHZ
Project:	SEC.26-T5N-R66W	TVD Reference:	WELL @ 4768.0ft (RKB - 15')
Reference Site:	SRC Evans East Pad Sec.26-T5N-R66W	MD Reference:	WELL @ 4768.0ft (RKB - 15')
Site Error:	0.0ft	North Reference:	True
Reference Well:	SRC Evans D-26-23-14NHZ	Survey Calculation Method:	Minimum Curvature
Well Error:	0.0ft	Output errors are at	2.00 sigma
Reference Wellbore	Wellbore #1	Database:	Landmark
Reference Design:	Plan #1 (10-27-14)	Offset TVD Reference:	Offset Datum

Offset Design												Offset Site Error:	0.0 ft
SRC Evans Center Pad Sec.26-T5N-R66W - SRC Evans 33-26-23-14NHZ - Wellbore #1 - Plan #1 (10-												Offset Well Error:	0.0 ft
Survey Program: 0-MWD													
Reference		Offset		Semi Major Axis			Distance						
Measured Depth	Vertical Depth	Measured Depth	Vertical Depth	Reference	Offset	Highside Toolface	Offset Wellbore Centre		Between Centres	Between Ellipses	Minimum Separation	Separation Factor	Warning
(ft)	(ft)	(ft)	(ft)	(ft)	(ft)	(°)	+N/-S (ft)	+E/-W (ft)	(ft)	(ft)	(ft)		
5,100.0	4,982.7	5,163.3	5,081.4	22.1	18.8	145.25	-554.6	40.3	790.0	756.6	33.37	23.669	
5,200.0	5,079.6	5,262.9	5,178.8	22.7	19.3	145.03	-570.9	54.0	797.3	763.1	34.23	23.295 SF	

Company:	Synergy Resources	Local Co-ordinate Reference:	Well SRC Evans D-26-23-14NHZ
Project:	SEC.26-T5N-R66W	TVD Reference:	WELL @ 4768.0ft (RKB - 15')
Reference Site:	SRC Evans East Pad Sec.26-T5N-R66W	MD Reference:	WELL @ 4768.0ft (RKB - 15')
Site Error:	0.0ft	North Reference:	True
Reference Well:	SRC Evans D-26-23-14NHZ	Survey Calculation Method:	Minimum Curvature
Well Error:	0.0ft	Output errors are at	2.00 sigma
Reference Wellbore	Wellbore #1	Database:	Landmark
Reference Design:	Plan #1 (10-27-14)	Offset TVD Reference:	Offset Datum

Offset Design													Offset Site Error:	0.0 ft
Survey Program: 0-MWD													Offset Well Error:	0.0 ft
Reference		Offset		Semi Major Axis			Distance							Warning
Measured Depth (ft)	Vertical Depth (ft)	Measured Depth (ft)	Vertical Depth (ft)	Reference (ft)	Offset (ft)	Highside Toolface (°)	Offset Wellbore Centre +N/-S (ft)	+E/-W (ft)	Between Centres (ft)	Between Ellipses (ft)	Minimum Separation (ft)	Separation Factor		
0.0	0.0	0.0	0.0	0.0	0.0	-90.09	-0.7	-459.7	459.8					
100.0	100.0	95.0	95.0	0.1	0.1	-90.09	-0.7	-459.7	459.7	459.5	0.22	2,097.810		
200.0	200.0	195.0	195.0	0.3	0.3	-90.09	-0.7	-459.7	459.7	459.1	0.66	693.376		
300.0	300.0	295.0	295.0	0.6	0.6	-90.09	-0.7	-459.7	459.7	458.6	1.11	413.224		
400.0	400.0	395.0	395.0	0.8	0.8	-90.09	-0.7	-459.7	459.7	458.2	1.56	294.310		
500.0	500.0	495.0	495.0	1.0	1.0	-90.09	-0.7	-459.7	459.7	457.7	2.01	228.543		
600.0	600.0	595.0	595.0	1.2	1.2	-90.09	-0.7	-459.7	459.7	457.3	2.46	186.800		
700.0	700.0	695.0	695.0	1.5	1.4	-90.09	-0.7	-459.7	459.7	456.8	2.91	157.950		
800.0	800.0	795.0	795.0	1.7	1.7	-90.09	-0.7	-459.7	459.7	456.4	3.36	136.820 CC, ES		
900.0	900.0	902.0	902.0	1.9	1.9	147.85	-2.4	-459.0	460.5	456.7	3.78	121.969		
1,000.0	999.8	1,009.3	1,009.1	2.1	2.1	147.54	-7.6	-456.5	462.6	458.5	4.16	111.267		
1,100.0	1,099.5	1,116.4	1,115.8	2.3	2.3	147.03	-16.5	-452.3	466.1	461.6	4.57	102.014		
1,200.0	1,198.7	1,222.0	1,220.5	2.5	2.6	146.32	-28.7	-446.5	471.1	466.1	5.02	93.894		
1,300.0	1,297.5	1,321.7	1,319.2	2.8	2.8	145.74	-41.3	-440.5	478.5	473.0	5.49	87.097		
1,400.0	1,395.6	1,421.1	1,417.6	3.1	3.1	145.37	-54.0	-434.5	488.8	482.8	6.01	81.374		
1,500.0	1,493.1	1,520.2	1,515.8	3.5	3.4	145.21	-66.5	-428.5	501.9	495.4	6.55	76.588		
1,511.2	1,503.9	1,531.3	1,526.7	3.6	3.4	145.20	-67.9	-427.9	503.6	497.0	6.62	76.102		
1,600.0	1,590.0	1,619.1	1,613.7	3.9	3.7	145.31	-79.1	-422.6	516.8	509.6	7.15	72.306		
1,700.0	1,686.9	1,718.0	1,711.6	4.4	4.0	145.43	-91.6	-416.6	531.7	523.9	7.76	68.490		
1,800.0	1,783.9	1,816.9	1,809.5	4.9	4.3	145.54	-104.2	-410.7	546.6	538.2	8.40	65.103		
1,900.0	1,880.8	1,915.7	1,907.4	5.4	4.6	145.64	-116.7	-404.7	561.5	552.4	9.04	62.105		
2,000.0	1,977.7	2,014.6	2,005.3	5.8	5.0	145.74	-129.3	-398.7	576.4	566.7	9.70	59.447		
2,100.0	2,074.7	2,113.5	2,103.2	6.3	5.3	145.84	-141.8	-392.8	591.3	580.9	10.36	57.083		
2,200.0	2,171.6	2,212.4	2,201.1	6.9	5.6	145.93	-154.4	-386.8	606.2	595.1	11.03	54.972		
2,300.0	2,268.5	2,311.3	2,299.0	7.4	6.0	146.01	-166.9	-380.9	621.1	609.4	11.70	53.079		
2,400.0	2,365.5	2,410.1	2,396.9	7.9	6.3	146.10	-179.5	-374.9	636.0	623.6	12.38	51.376		
2,500.0	2,462.4	2,509.0	2,494.7	8.4	6.6	146.17	-192.0	-369.0	650.9	637.8	13.06	49.837		
2,600.0	2,559.3	2,607.9	2,592.6	8.9	7.0	146.25	-204.6	-363.0	665.8	652.0	13.74	48.441		
2,700.0	2,656.3	2,706.8	2,690.5	9.4	7.3	146.32	-217.1	-357.1	680.7	666.2	14.43	47.169		
2,800.0	2,753.2	2,805.7	2,788.4	9.9	7.7	146.39	-229.7	-351.1	695.6	680.5	15.12	46.007		
2,900.0	2,850.1	2,904.5	2,886.3	10.5	8.0	146.45	-242.2	-345.2	710.5	694.7	15.81	44.941		
3,000.0	2,947.1	3,003.4	2,984.2	11.0	8.3	146.52	-254.8	-339.2	725.4	708.9	16.50	43.961		
3,100.0	3,044.0	3,102.3	3,082.1	11.5	8.7	146.58	-267.3	-333.3	740.3	723.1	17.19	43.056		
3,200.0	3,140.9	3,201.2	3,180.0	12.1	9.0	146.63	-279.9	-327.3	755.2	737.3	17.89	42.219		
3,300.0	3,237.9	3,300.1	3,277.9	12.6	9.4	146.69	-292.4	-321.3	770.1	751.5	18.58	41.443		
3,400.0	3,334.8	3,398.9	3,375.8	13.1	9.7	146.74	-305.0	-315.4	785.0	765.7	19.28	40.721		
3,500.0	3,431.8	3,497.8	3,473.7	13.6	10.1	146.79	-317.5	-309.4	799.9	780.0	19.97	40.048 SF		

SRC Evans East Pad Sec.26-T5N-R66W - SRC Evans 33-26-23-14CHZ - Wellbore #1 - Plan #1 (10-27)													Offset Site Error:	0.0 ft
Survey Program: 0-MWD													Offset Well Error:	0.0 ft
Reference		Offset		Semi Major Axis			Distance							
Measured Depth (ft)	Vertical Depth (ft)	Measured Depth (ft)	Vertical Depth (ft)	Reference (ft)	Offset (ft)	Highside Toolface (°)	Offset Wellbore Centre +N/-S (ft)	+E/-W (ft)	Between Centres (ft)	Between Ellipses (ft)	Minimum Separation (ft)	Separation Factor	Warning	
0.0	0.0	0.0	0.0	0.0	0.0	179.76	-67.4	0.3	67.4					
100.0	100.0	98.0	98.0	0.1	0.1	179.76	-67.4	0.3	67.4	67.2	0.22	302.882		
200.0	200.0	198.0	198.0	0.3	0.3	179.76	-67.4	0.3	67.4	66.7	0.67	100.624		
300.0	300.0	298.0	298.0	0.6	0.6	179.76	-67.4	0.3	67.4	66.3	1.12	60.213		
400.0	400.0	398.0	398.0	0.8	0.8	179.76	-67.4	0.3	67.4	65.8	1.57	42.960		
500.0	500.0	498.0	498.0	1.0	1.0	179.76	-67.4	0.3	67.4	65.4	2.02	33.392		
600.0	600.0	598.0	598.0	1.2	1.2	179.76	-67.4	0.3	67.4	64.9	2.47	27.310		
700.0	700.0	698.0	698.0	1.5	1.5	179.76	-67.4	0.3	67.4	64.5	2.92	23.102		
800.0	800.0	798.0	798.0	1.7	1.7	179.76	-67.4	0.3	67.4	64.0	3.37	20.017		
900.0	900.0	898.0	898.0	1.9	1.9	59.08	-67.4	0.3	66.5	62.7	3.80	17.513		
1,000.0	999.8	997.8	997.8	2.1	2.1	63.14	-67.4	0.3	64.0	59.7	4.21	15.176		
1,100.0	1,099.5	1,095.9	1,095.9	2.3	2.3	69.41	-68.8	1.1	61.7	57.1	4.62	13.357		
1,151.3	1,150.4	1,146.3	1,146.3	2.4	2.4	73.09	-70.6	2.2	61.4	56.6	4.83	12.702	CC, ES	
1,200.0	1,198.7	1,194.1	1,194.0	2.5	2.5	76.76	-73.1	3.6	61.7	56.7	5.04	12.245		
1,300.0	1,297.5	1,292.5	1,291.9	2.8	2.7	84.48	-80.2	7.9	64.2	58.7	5.51	11.656		
1,400.0	1,395.6	1,391.0	1,389.8	3.1	2.9	91.82	-90.3	13.8	69.4	63.4	6.05	11.473	SF	
1,500.0	1,493.1	1,490.2	1,488.2	3.5	3.2	99.81	-101.3	20.4	76.5	69.9	6.66	11.494		
1,511.2	1,503.9	1,501.3	1,499.1	3.6	3.2	100.76	-102.6	21.1	77.5	70.7	6.73	11.510		
1,600.0	1,590.0	1,589.2	1,586.3	3.9	3.4	107.78	-112.4	27.0	85.5	78.2	7.30	11.717		
1,700.0	1,686.9	1,688.1	1,684.4	4.4	3.7	114.18	-123.4	33.5	95.9	88.0	7.95	12.069		
1,800.0	1,783.9	1,787.1	1,782.5	4.9	4.0	119.29	-134.5	40.1	107.2	98.6	8.59	12.482		
1,900.0	1,880.8	1,886.0	1,880.6	5.4	4.2	123.40	-145.6	46.6	119.2	110.0	9.23	12.917		
2,000.0	1,977.7	1,985.0	1,978.7	5.8	4.5	126.75	-156.6	53.2	131.7	121.9	9.87	13.348		
2,100.0	2,074.7	2,083.9	2,076.8	6.3	4.8	129.52	-167.7	59.7	144.6	134.1	10.51	13.765		
2,200.0	2,171.6	2,182.9	2,174.9	6.9	5.1	131.83	-178.7	66.3	157.7	146.6	11.14	14.160		
2,300.0	2,268.5	2,281.8	2,273.1	7.4	5.4	133.78	-189.8	72.8	171.1	159.3	11.77	14.532		
2,400.0	2,365.5	2,380.7	2,371.2	7.9	5.8	135.46	-200.8	79.4	184.6	172.2	12.41	14.879		
2,500.0	2,462.4	2,479.7	2,469.3	8.4	6.1	136.90	-211.9	85.9	198.3	185.3	13.04	15.203		
2,600.0	2,559.3	2,578.6	2,567.4	8.9	6.4	138.15	-222.9	92.5	212.1	198.4	13.68	15.504		
2,700.0	2,656.3	2,677.6	2,665.5	9.4	6.7	139.25	-234.0	99.0	225.9	211.6	14.31	15.784		
2,800.0	2,753.2	2,776.5	2,763.6	9.9	7.0	140.23	-245.0	105.6	239.9	224.9	14.95	16.045		
2,900.0	2,850.1	2,875.5	2,861.7	10.5	7.3	141.10	-256.1	112.1	253.8	238.3	15.59	16.288		
3,000.0	2,947.1	2,974.4	2,959.8	11.0	7.7	141.87	-267.1	118.7	267.9	251.7	16.22	16.514		
3,100.0	3,044.0	3,073.4	3,057.9	11.5	8.0	142.57	-278.2	125.2	282.0	265.1	16.86	16.725		
3,200.0	3,140.9	3,172.3	3,156.0	12.1	8.3	143.21	-289.2	131.8	296.1	278.6	17.50	16.923		
3,300.0	3,237.9	3,271.3	3,254.1	12.6	8.6	143.78	-300.3	138.3	310.2	292.1	18.13	17.108		
3,400.0	3,334.8	3,370.2	3,352.3	13.1	9.0	144.31	-311.3	144.9	324.4	305.7	18.77	17.282		
3,500.0	3,431.8	3,469.2	3,450.4	13.6	9.3	144.79	-322.4	151.4	338.6	319.2	19.41	17.445		
3,600.0	3,528.7	3,568.1	3,548.5	14.2	9.6	145.23	-333.4	158.0	352.9	332.8	20.05	17.598		
3,700.0	3,625.6	3,667.1	3,646.6	14.7	9.9	145.64	-344.5	164.5	367.1	346.4	20.69	17.743		
3,800.0	3,722.6	3,766.0	3,744.7	15.2	10.3	146.02	-355.5	171.1	381.4	360.1	21.33	17.879		
3,900.0	3,819.5	3,865.0	3,842.8	15.8	10.6	146.37	-366.6	177.6	395.7	373.7	21.97	18.008		
4,000.0	3,916.4	3,963.9	3,940.9	16.3	10.9	146.69	-377.6	184.2	410.0	387.3	22.61	18.130		
4,100.0	4,013.4	4,062.8	4,039.0	16.8	11.3	147.00	-388.7	190.7	424.3	401.0	23.25	18.246		
4,200.0	4,110.3	4,161.8	4,137.1	17.4	11.6	147.28	-399.7	197.3	438.6	414.7	23.89	18.355		
4,300.0	4,207.2	4,260.7	4,235.2	17.9	11.9	147.55	-410.8	203.9	452.9	428.4	24.54	18.459		
4,400.0	4,304.2	4,359.7	4,333.4	18.4	12.3	147.80	-421.8	210.4	467.2	442.1	25.18	18.558		
4,500.0	4,401.1	4,458.6	4,431.5	18.9	12.6	148.03	-432.9	217.0	481.6	455.8	25.82	18.652		
4,600.0	4,498.0	4,557.6	4,529.6	19.5	12.9	148.25	-443.9	223.5	495.9	469.5	26.46	18.742		
4,700.0	4,595.0	4,656.5	4,627.7	20.0	13.2	148.46	-455.0	230.1	510.3	483.2	27.10	18.827		
4,800.0	4,691.9	4,755.5	4,725.8	20.5	13.6	148.66	-466.0	236.6	524.7	496.9	27.75	18.909		
4,900.0	4,788.8	4,854.4	4,823.9	21.1	13.9	148.85	-477.1	243.2	539.0	510.6	28.39	18.987		

Company:	Synergy Resources	Local Co-ordinate Reference:	Well SRC Evans D-26-23-14NHZ
Project:	SEC.26-T5N-R66W	TVD Reference:	WELL @ 4768.0ft (RKB - 15')
Reference Site:	SRC Evans East Pad Sec.26-T5N-R66W	MD Reference:	WELL @ 4768.0ft (RKB - 15')
Site Error:	0.0ft	North Reference:	True
Reference Well:	SRC Evans D-26-23-14NHZ	Survey Calculation Method:	Minimum Curvature
Well Error:	0.0ft	Output errors are at	2.00 sigma
Reference Wellbore	Wellbore #1	Database:	Landmark
Reference Design:	Plan #1 (10-27-14)	Offset TVD Reference:	Offset Datum

Offset Design		SRC Evans East Pad Sec.26-T5N-R66W - SRC Evans 33-26-23-14CHZ - Wellbore #1 - Plan #1 (10-27)										Offset Site Error:		0.0 ft	
Survey Program: 0-MWD												Offset Well Error:		0.0 ft	
Reference		Offset		Semi Major Axis			Distance							Warning	
Measured Depth (ft)	Vertical Depth (ft)	Measured Depth (ft)	Vertical Depth (ft)	Reference (ft)	Offset (ft)	Highside Toolface (°)	Offset Wellbore Centre +N/-S (ft)	+E/-W (ft)	Between Centres (ft)	Between Ellipses (ft)	Minimum Separation (ft)	Separation Factor			
5,000.0	4,885.8	4,953.4	4,922.0	21.6	14.2	149.03	-488.1	249.7	553.4	524.4	29.03	19.061			
5,100.0	4,982.7	5,052.3	5,020.1	22.1	14.6	149.19	-499.2	256.3	567.8	538.1	29.68	19.133			
5,200.0	5,079.6	5,151.3	5,118.2	22.7	14.9	149.35	-510.2	262.8	582.2	551.8	30.32	19.201			
5,300.0	5,176.6	5,250.2	5,216.3	23.2	15.2	149.51	-521.3	269.4	596.6	565.6	30.96	19.267			
5,400.0	5,273.5	5,349.2	5,314.5	23.8	15.6	149.65	-532.3	275.9	610.9	579.3	31.61	19.330			
5,500.0	5,370.4	5,448.1	5,412.6	24.3	15.9	149.79	-543.4	282.5	625.3	593.1	32.25	19.391			
5,600.0	5,467.4	5,547.1	5,510.7	24.8	16.2	149.92	-554.4	289.0	639.7	606.8	32.89	19.449			
5,700.0	5,564.3	5,646.0	5,608.8	25.4	16.6	150.05	-565.5	295.6	654.1	620.6	33.54	19.505			
5,800.0	5,661.2	5,745.0	5,706.9	25.9	16.9	150.17	-576.5	302.1	668.6	634.4	34.18	19.559			
5,900.0	5,758.2	5,843.9	5,805.0	26.4	17.2	150.29	-587.6	308.7	683.0	648.1	34.83	19.610			
6,000.0	5,855.1	5,942.8	5,903.1	27.0	17.6	150.40	-598.6	315.2	697.4	661.9	35.47	19.660			
6,100.0	5,952.1	6,041.8	6,001.2	27.5	17.9	150.50	-609.7	321.8	711.8	675.7	36.12	19.709			
6,200.0	6,049.0	6,140.7	6,099.3	28.0	18.2	150.61	-620.7	328.3	726.2	689.4	36.76	19.755			
6,230.2	6,078.3	6,170.7	6,129.0	28.2	18.3	150.64	-624.1	330.3	730.6	693.6	36.95	19.769			
6,250.0	6,097.5	6,190.2	6,148.4	28.3	18.4	156.50	-626.3	331.6	733.4	696.4	37.02	19.811			
6,300.0	6,146.2	6,239.6	6,197.4	28.5	18.6	173.67	-631.8	334.9	740.5	703.3	37.20	19.905			
6,350.0	6,195.1	6,288.8	6,246.1	28.6	18.7	-167.76	-637.3	338.1	747.5	710.0	37.43	19.971			
6,400.0	6,243.9	6,337.4	6,294.3	28.8	18.9	-151.24	-642.7	341.4	754.3	716.7	37.69	20.014			
6,450.0	6,292.3	6,385.3	6,341.8	28.9	19.1	-138.68	-648.1	344.5	761.2	723.3	37.98	20.044			
6,500.0	6,340.1	6,432.2	6,388.3	29.0	19.2	-129.86	-653.3	347.6	768.3	730.0	38.28	20.070			
6,550.0	6,387.0	6,478.9	6,434.7	29.0	19.4	-123.81	-657.9	350.7	775.6	737.0	38.56	20.116			
6,600.0	6,432.9	6,527.0	6,482.7	29.1	19.5	-119.60	-659.7	353.9	783.2	744.5	38.76	20.204			
6,650.0	6,477.6	6,576.5	6,532.0	29.1	19.5	-116.62	-658.2	357.2	791.1	752.2	38.90	20.336			
6,700.0	6,520.7	6,627.4	6,582.5	29.1	19.6	-114.51	-653.0	360.5	799.2	760.2	38.97	20.508			

Company:	Synergy Resources	Local Co-ordinate Reference:	Well SRC Evans D-26-23-14NHZ
Project:	SEC.26-T5N-R66W	TVD Reference:	WELL @ 4768.0ft (RKB - 15')
Reference Site:	SRC Evans East Pad Sec.26-T5N-R66W	MD Reference:	WELL @ 4768.0ft (RKB - 15')
Site Error:	0.0ft	North Reference:	True
Reference Well:	SRC Evans D-26-23-14NHZ	Survey Calculation Method:	Minimum Curvature
Well Error:	0.0ft	Output errors are at	2.00 sigma
Reference Wellbore	Wellbore #1	Database:	Landmark
Reference Design:	Plan #1 (10-27-14)	Offset TVD Reference:	Offset Datum

Offset Design													Offset Site Error:	0.0 ft
Survey Program: 0-MWD													Offset Well Error:	0.0 ft
Reference		Offset		Semi Major Axis			Distance							Warning
Measured Depth (ft)	Vertical Depth (ft)	Measured Depth (ft)	Vertical Depth (ft)	Reference (ft)	Offset (ft)	Highside Toolface (°)	Offset Wellbore Centre +N/-S (ft)	+E/-W (ft)	Between Centres (ft)	Between Ellipses (ft)	Minimum Separation (ft)	Separation Factor		
0.0	0.0	2.0	2.0	0.0	0.0	0.00	67.4	0.0	67.4	67.4	0.00	N/A		
100.0	100.0	102.0	102.0	0.1	0.1	0.00	67.4	0.0	67.4	67.2	0.23	293.976		
200.0	200.0	202.0	202.0	0.3	0.3	0.00	67.4	0.0	67.4	66.7	0.68	99.325		
300.0	300.0	302.9	302.8	0.6	0.6	1.47	66.7	1.7	66.7	65.6	1.12	59.814		
400.0	400.0	403.5	403.3	0.8	0.8	5.91	64.7	6.7	65.0	63.5	1.56	41.664		
500.0	500.0	503.6	503.0	1.0	1.0	13.64	61.4	14.9	63.1	61.1	2.03	31.151		
578.3	578.3	581.5	580.3	1.2	1.2	22.10	57.9	23.5	62.4	60.0	2.40	26.030 CC		
600.0	600.0	602.9	601.6	1.2	1.3	24.79	56.8	26.2	62.5	60.0	2.50	25.005 ES		
700.0	700.0	701.3	698.7	1.5	1.6	38.51	50.9	40.5	65.2	62.2	2.96	21.998		
800.0	800.0	798.5	794.2	1.7	2.0	52.71	44.0	57.7	73.0	69.6	3.42	21.338		
900.0	900.0	894.7	887.9	1.9	2.5	-57.48	35.9	77.7	85.8	81.6	4.16	20.635		
1,000.0	999.8	990.3	980.3	2.1	2.9	-49.19	26.6	100.4	101.5	96.9	4.64	21.873		
1,100.0	1,099.5	1,085.2	1,071.2	2.3	3.5	-43.42	16.3	125.7	119.0	113.8	5.14	23.154		
1,200.0	1,198.7	1,181.2	1,162.2	2.5	4.1	-39.35	4.9	153.9	137.2	131.5	5.66	24.230		
1,300.0	1,297.5	1,279.7	1,255.5	2.8	4.8	-36.85	-7.0	183.2	153.6	147.4	6.22	24.696		
1,400.0	1,395.6	1,378.7	1,349.2	3.1	5.4	-35.53	-19.0	212.7	167.4	160.6	6.82	24.556		
1,500.0	1,493.1	1,478.0	1,443.3	3.5	6.1	-35.06	-31.0	242.3	178.4	170.9	7.47	23.882		
1,511.2	1,503.9	1,489.1	1,453.8	3.6	6.2	-35.05	-32.4	245.7	179.5	171.9	7.55	23.779		
1,600.0	1,590.0	1,577.6	1,537.6	3.9	6.7	-35.11	-43.1	272.0	187.7	179.5	8.19	22.932		
1,700.0	1,686.9	1,677.2	1,631.8	4.4	7.4	-35.18	-55.1	301.7	197.0	188.0	8.92	22.082		
1,800.0	1,783.9	1,776.7	1,726.1	4.9	8.1	-35.24	-67.2	331.4	206.2	196.6	9.67	21.330		
1,900.0	1,880.8	1,876.3	1,820.4	5.4	8.8	-35.29	-79.2	361.0	215.5	205.1	10.43	20.664		
2,000.0	1,977.7	1,975.9	1,914.7	5.8	9.5	-35.34	-91.3	390.7	224.8	213.6	11.20	20.073		
2,100.0	2,074.7	2,075.4	2,009.0	6.3	10.1	-35.39	-103.3	420.4	234.0	222.1	11.97	19.546		
2,200.0	2,171.6	2,175.0	2,103.2	6.9	10.8	-35.43	-115.4	450.1	243.3	230.6	12.76	19.075		
2,300.0	2,268.5	2,274.6	2,197.5	7.4	11.5	-35.47	-127.4	479.7	252.6	239.0	13.54	18.651		
2,400.0	2,365.5	2,374.2	2,291.8	7.9	12.2	-35.50	-139.5	509.4	261.9	247.5	14.33	18.269		
2,500.0	2,462.4	2,473.7	2,386.1	8.4	12.9	-35.54	-151.5	539.1	271.1	256.0	15.13	17.922		
2,600.0	2,559.3	2,573.3	2,480.3	8.9	13.6	-35.57	-163.6	568.8	280.4	264.5	15.93	17.607		
2,700.0	2,656.3	2,672.9	2,574.6	9.4	14.3	-35.60	-175.6	598.4	289.7	272.9	16.73	17.319		
2,800.0	2,753.2	2,772.4	2,668.9	9.9	14.9	-35.63	-187.7	628.1	298.9	281.4	17.53	17.056		
2,900.0	2,850.1	2,872.0	2,763.2	10.5	15.6	-35.65	-199.7	657.8	308.2	289.9	18.33	16.813		
3,000.0	2,947.1	2,971.6	2,857.5	11.0	16.3	-35.68	-211.8	687.4	317.5	298.3	19.14	16.590		
3,100.0	3,044.0	3,071.1	2,951.7	11.5	17.0	-35.70	-223.8	717.1	326.8	306.8	19.94	16.383		
3,200.0	3,140.9	3,170.7	3,046.0	12.1	17.7	-35.72	-235.9	746.8	336.0	315.3	20.75	16.192		
3,300.0	3,237.9	3,270.3	3,140.3	12.6	18.4	-35.74	-248.0	776.5	345.3	323.7	21.56	16.014		
3,400.0	3,334.8	3,369.8	3,234.6	13.1	19.1	-35.76	-260.0	806.1	354.6	332.2	22.37	15.848		
3,500.0	3,431.8	3,469.4	3,328.8	13.6	19.7	-35.78	-272.1	835.8	363.8	340.7	23.18	15.693		
3,600.0	3,528.7	3,569.0	3,423.1	14.2	20.4	-35.80	-284.1	865.5	373.1	349.1	24.00	15.548		
3,700.0	3,625.6	3,668.6	3,517.4	14.7	21.1	-35.81	-296.2	895.2	382.4	357.6	24.81	15.412		
3,800.0	3,722.6	3,768.1	3,611.7	15.2	21.8	-35.83	-308.2	924.8	391.7	366.0	25.62	15.284		
3,900.0	3,819.5	3,867.7	3,706.0	15.8	22.5	-35.84	-320.3	954.5	400.9	374.5	26.44	15.164		
4,000.0	3,916.4	3,967.3	3,800.2	16.3	23.2	-35.86	-332.3	984.2	410.2	382.9	27.25	15.051		
4,100.0	4,013.4	4,066.8	3,894.5	16.8	23.9	-35.87	-344.4	1,013.9	419.5	391.4	28.07	14.944		
4,200.0	4,110.3	4,166.4	3,988.8	17.4	24.6	-35.89	-356.4	1,043.5	428.7	399.9	28.89	14.843		
4,300.0	4,207.2	4,266.0	4,083.1	17.9	25.2	-35.90	-368.5	1,073.2	438.0	408.3	29.70	14.747		
4,400.0	4,304.2	4,365.5	4,177.3	18.4	25.9	-35.91	-380.5	1,102.9	447.3	416.8	30.52	14.656		
4,500.0	4,401.1	4,465.1	4,271.6	18.9	26.6	-35.92	-392.6	1,132.6	456.6	425.2	31.34	14.569		
4,600.0	4,498.0	4,564.7	4,365.9	19.5	27.3	-35.93	-404.6	1,162.2	465.8	433.7	32.15	14.487		
4,700.0	4,595.0	4,664.2	4,460.2	20.0	28.0	-35.95	-416.7	1,191.9	475.1	442.1	32.97	14.409		
4,800.0	4,691.9	4,763.8	4,554.5	20.5	28.7	-35.96	-428.7	1,221.6	484.4	450.6	33.79	14.334		
4,900.0	4,788.8	4,863.4	4,648.7	21.1	29.4	-35.97	-440.8	1,251.2	493.6	459.0	34.61	14.263		

CC - Min centre to center distance or convergent point, SF - min separation factor, ES - min ellipse separation

Company:	Synergy Resources	Local Co-ordinate Reference:	Well SRC Evans D-26-23-14NHZ
Project:	SEC.26-T5N-R66W	TVD Reference:	WELL @ 4768.0ft (RKB - 15')
Reference Site:	SRC Evans East Pad Sec.26-T5N-R66W	MD Reference:	WELL @ 4768.0ft (RKB - 15')
Site Error:	0.0ft	North Reference:	True
Reference Well:	SRC Evans D-26-23-14NHZ	Survey Calculation Method:	Minimum Curvature
Well Error:	0.0ft	Output errors are at	2.00 sigma
Reference Wellbore	Wellbore #1	Database:	Landmark
Reference Design:	Plan #1 (10-27-14)	Offset TVD Reference:	Offset Datum

Offset Design													Offset Site Error:	0.0 ft
Survey Program: 0-MWD													Offset Well Error:	0.0 ft
Reference		Offset		Semi Major Axis			Distance							Warning
Measured Depth (ft)	Vertical Depth (ft)	Measured Depth (ft)	Vertical Depth (ft)	Reference (ft)	Offset (ft)	Highside Toolface (°)	Offset Wellbore Centre +N/-S (ft)	+E/-W (ft)	Between Centres (ft)	Between Ellipses (ft)	Minimum Separation (ft)	Separation Factor		
5,000.0	4,885.8	4,963.0	4,743.0	21.6	30.1	-35.98	-452.8	1,280.9	502.9	467.5	35.43	14.195		
5,100.0	4,982.7	5,062.5	4,837.3	22.1	30.7	-35.98	-464.9	1,310.6	512.2	475.9	36.25	14.130		
5,200.0	5,079.6	5,162.1	4,931.6	22.7	31.4	-35.99	-476.9	1,340.3	521.5	484.4	37.07	14.068		
5,300.0	5,176.6	5,261.7	5,025.8	23.2	32.1	-36.00	-489.0	1,369.9	530.7	492.8	37.89	14.008		
5,400.0	5,273.5	5,361.2	5,120.1	23.8	32.8	-36.01	-501.0	1,399.6	540.0	501.3	38.71	13.951		
5,500.0	5,370.4	5,460.8	5,214.4	24.3	33.5	-36.02	-513.1	1,429.3	549.3	509.7	39.53	13.896		
5,600.0	5,467.4	5,560.4	5,308.7	24.8	34.2	-36.03	-525.1	1,459.0	558.5	518.2	40.35	13.844		
5,700.0	5,564.3	5,659.9	5,403.0	25.4	34.9	-36.03	-537.2	1,488.6	567.8	526.6	41.17	13.793		
5,800.0	5,661.2	5,759.5	5,497.2	25.9	35.6	-36.04	-549.2	1,518.3	577.1	535.1	41.99	13.744		
5,900.0	5,758.2	5,859.1	5,591.5	26.4	36.2	-36.05	-561.3	1,548.0	586.4	543.5	42.81	13.697		
6,000.0	5,855.1	5,958.6	5,685.8	27.0	36.9	-36.06	-573.3	1,577.7	595.6	552.0	43.63	13.652		
6,100.0	5,952.1	6,058.2	5,780.1	27.5	37.6	-36.06	-585.4	1,607.3	604.9	560.4	44.45	13.609		
6,200.0	6,049.0	6,157.8	5,874.3	28.0	38.3	-36.07	-597.4	1,637.0	614.2	568.9	45.27	13.567		
6,230.2	6,078.3	6,187.9	5,902.8	28.2	38.5	-36.07	-601.1	1,646.0	617.0	571.5	45.52	13.554		
6,250.0	6,097.5	6,207.6	5,921.5	28.3	38.7	-30.55	-603.5	1,651.8	618.8	573.0	45.74	13.528		
6,300.0	6,146.2	6,257.3	5,968.5	28.5	39.0	-13.83	-609.5	1,666.7	623.2	577.0	46.11	13.514 SF		
6,350.0	6,195.1	6,306.7	6,015.3	28.6	39.3	4.90	-615.5	1,681.4	627.3	581.0	46.25	13.561		
6,400.0	6,243.9	6,355.5	6,061.6	28.8	39.7	22.13	-621.4	1,695.9	631.2	585.0	46.18	13.669		
6,450.0	6,292.3	6,403.6	6,107.1	28.9	40.0	35.91	-627.2	1,710.3	635.1	589.2	45.92	13.832		
6,500.0	6,340.1	6,450.6	6,151.6	29.0	40.3	46.37	-632.9	1,724.3	639.2	593.7	45.51	14.045		
6,550.0	6,387.0	6,496.4	6,194.9	29.0	40.7	54.38	-638.4	1,737.9	643.6	598.6	45.00	14.303		
6,600.0	6,432.9	6,540.7	6,236.9	29.1	41.0	60.71	-643.8	1,751.1	648.7	604.3	44.44	14.598		
6,650.0	6,477.6	6,583.3	6,277.3	29.1	41.3	65.86	-648.9	1,763.8	654.7	610.8	43.88	14.922		
6,700.0	6,520.7	6,624.0	6,315.8	29.1	41.5	70.15	-653.9	1,776.0	661.9	618.6	43.35	15.270		
6,750.0	6,562.1	6,662.7	6,352.4	29.1	41.8	73.76	-658.6	1,787.5	670.6	627.7	42.89	15.635		
6,800.0	6,601.6	6,699.0	6,386.8	29.1	42.1	76.79	-663.0	1,798.3	681.1	638.6	42.54	16.013		
6,850.0	6,639.0	6,732.9	6,418.9	29.0	42.3	79.27	-667.1	1,808.4	693.6	651.3	42.30	16.398		
6,900.0	6,674.1	6,771.4	6,455.4	28.9	42.5	81.70	-671.3	1,819.9	708.2	666.2	42.04	16.848		
6,950.0	6,706.8	6,818.7	6,500.5	28.9	42.8	84.31	-674.0	1,834.1	724.6	682.9	41.70	17.376		
7,000.0	6,736.8	6,870.4	6,549.7	28.8	43.0	86.83	-673.4	1,849.6	742.4	701.0	41.39	17.936		
7,050.0	6,764.1	6,927.6	6,604.0	28.7	43.3	89.33	-668.3	1,866.6	761.6	720.5	41.09	18.536		
7,100.0	6,788.5	6,992.3	6,664.8	28.6	43.5	91.93	-657.1	1,885.7	781.7	741.0	40.75	19.183		

Company:	Synergy Resources	Local Co-ordinate Reference:	Well SRC Evans D-26-23-14NHZ
Project:	SEC.26-T5N-R66W	TVD Reference:	WELL @ 4768.0ft (RKB - 15')
Reference Site:	SRC Evans East Pad Sec.26-T5N-R66W	MD Reference:	WELL @ 4768.0ft (RKB - 15')
Site Error:	0.0ft	North Reference:	True
Reference Well:	SRC Evans D-26-23-14NHZ	Survey Calculation Method:	Minimum Curvature
Well Error:	0.0ft	Output errors are at	2.00 sigma
Reference Wellbore	Wellbore #1	Database:	Landmark
Reference Design:	Plan #1 (10-27-14)	Offset TVD Reference:	Offset Datum

Offset Design													Offset Site Error:	0.0 ft
Survey Program: 0-MWD													Offset Well Error:	0.0 ft
Reference		Offset		Semi Major Axis			Distance							Warning
Measured Depth (ft)	Vertical Depth (ft)	Measured Depth (ft)	Vertical Depth (ft)	Reference (ft)	Offset (ft)	Highside Toolface (°)	Offset Wellbore Centre +N/-S (ft)	+E/-W (ft)	Between Centres (ft)	Between Ellipses (ft)	Minimum Separation (ft)	Separation Factor		
0.0	0.0	1.0	1.0	0.0	0.0	0.00	45.2	0.0	45.2	45.2	0.00	N/A		
100.0	100.0	101.0	101.0	0.1	0.1	0.00	45.2	0.0	45.2	44.9	0.23	198.995		
200.0	200.0	201.0	201.0	0.3	0.3	0.00	45.2	0.0	45.2	44.5	0.68	66.772		
300.0	300.0	301.0	301.0	0.6	0.6	0.00	45.2	0.0	45.2	44.0	1.13	40.117		
400.0	400.0	401.0	401.0	0.8	0.8	0.00	45.2	0.0	45.2	43.6	1.58	28.674		
500.0	500.0	501.6	501.6	1.0	1.0	2.11	44.4	1.6	44.5	42.4	2.01	22.134		
600.0	600.0	602.0	601.8	1.2	1.2	8.71	42.2	6.5	42.7	40.3	2.44	17.504		
700.0	700.0	701.9	701.3	1.5	1.4	20.54	38.5	14.4	41.2	38.3	2.89	14.255		
727.1	727.1	728.8	728.1	1.5	1.5	24.67	37.3	17.1	41.1	38.0	3.01	13.631 CC, ES		
800.0	800.0	801.0	799.7	1.7	1.7	37.26	33.5	25.5	42.1	38.7	3.34	12.605		
900.0	900.0	899.5	897.0	1.9	2.0	-68.19	27.0	39.5	47.3	43.5	3.87	12.235		
1,000.0	999.8	997.5	993.2	2.1	2.4	-56.03	19.3	56.4	56.0	51.7	4.34	12.901		
1,100.0	1,099.5	1,095.0	1,088.2	2.3	2.8	-47.66	10.2	76.2	66.7	61.9	4.82	13.830		
1,200.0	1,198.7	1,192.1	1,182.0	2.5	3.3	-41.95	-0.2	98.9	78.6	73.3	5.33	14.762		
1,300.0	1,297.5	1,288.7	1,274.5	2.8	3.8	-38.00	-11.9	124.3	91.3	85.4	5.86	15.582		
1,400.0	1,395.6	1,387.5	1,368.5	3.1	4.4	-35.51	-24.7	152.0	103.2	96.8	6.42	16.062		
1,500.0	1,493.1	1,487.1	1,463.2	3.5	5.0	-34.52	-37.5	180.0	112.4	105.4	7.04	15.966		
1,511.2	1,503.9	1,498.2	1,473.8	3.6	5.1	-34.48	-38.9	183.2	113.3	106.2	7.12	15.919		
1,600.0	1,590.0	1,586.8	1,558.0	3.9	5.6	-34.32	-50.4	208.1	120.0	112.2	7.73	15.519		
1,700.0	1,686.9	1,686.5	1,652.8	4.4	6.3	-34.16	-63.3	236.1	127.5	119.0	8.44	15.110		
1,800.0	1,783.9	1,786.3	1,747.6	4.9	6.9	-34.02	-76.1	264.2	135.0	125.8	9.15	14.742		
1,900.0	1,880.8	1,886.0	1,842.5	5.4	7.6	-33.89	-89.0	292.2	142.5	132.6	9.88	14.413		
2,000.0	1,977.7	1,985.7	1,937.3	5.8	8.2	-33.78	-101.9	320.3	150.0	139.3	10.62	14.119		
2,100.0	2,074.7	2,085.4	2,032.1	6.3	8.9	-33.68	-114.8	348.3	157.5	146.1	11.36	13.855		
2,200.0	2,171.6	2,185.1	2,126.9	6.9	9.5	-33.58	-127.7	376.4	165.0	152.8	12.11	13.619		
2,300.0	2,268.5	2,284.8	2,221.8	7.4	10.2	-33.50	-140.5	404.4	172.5	159.6	12.87	13.405		
2,400.0	2,365.5	2,384.6	2,316.6	7.9	10.8	-33.42	-153.4	432.4	180.0	166.3	13.62	13.212		
2,500.0	2,462.4	2,484.3	2,411.4	8.4	11.5	-33.35	-166.3	460.5	187.5	173.1	14.38	13.037		
2,600.0	2,559.3	2,584.0	2,506.2	8.9	12.1	-33.28	-179.2	488.5	195.0	179.8	15.14	12.878		
2,700.0	2,656.3	2,683.7	2,601.0	9.4	12.8	-33.22	-192.1	516.6	202.5	186.6	15.90	12.732		
2,800.0	2,753.2	2,783.4	2,695.9	9.9	13.4	-33.16	-204.9	544.6	210.0	193.3	16.67	12.598		
2,900.0	2,850.1	2,883.1	2,790.7	10.5	14.1	-33.11	-217.8	572.7	217.5	200.1	17.43	12.475		
3,000.0	2,947.1	2,982.9	2,885.5	11.0	14.8	-33.06	-230.7	600.7	225.0	206.8	18.20	12.362		
3,100.0	3,044.0	3,082.6	2,980.3	11.5	15.4	-33.01	-243.6	628.8	232.5	213.5	18.97	12.257		
3,200.0	3,140.9	3,182.3	3,075.2	12.1	16.1	-32.97	-256.5	656.8	240.0	220.3	19.74	12.160		
3,300.0	3,237.9	3,282.0	3,170.0	12.6	16.7	-32.93	-269.3	684.9	247.5	227.0	20.51	12.070		
3,400.0	3,334.8	3,381.7	3,264.8	13.1	17.4	-32.89	-282.2	712.9	255.0	233.7	21.28	11.985		
3,500.0	3,431.8	3,481.5	3,359.6	13.6	18.1	-32.85	-295.1	740.9	262.5	240.5	22.05	11.907		
3,600.0	3,528.7	3,581.2	3,454.4	14.2	18.7	-32.82	-308.0	769.0	270.0	247.2	22.82	11.833		
3,700.0	3,625.6	3,680.9	3,549.3	14.7	19.4	-32.79	-320.9	797.0	277.5	253.9	23.59	11.764		
3,800.0	3,722.6	3,780.6	3,644.1	15.2	20.0	-32.76	-333.7	825.1	285.0	260.7	24.36	11.699		
3,900.0	3,819.5	3,880.3	3,738.9	15.8	20.7	-32.73	-346.6	853.1	292.5	267.4	25.14	11.638		
4,000.0	3,916.4	3,980.0	3,833.7	16.3	21.4	-32.70	-359.5	881.2	300.0	274.1	25.91	11.581		
4,100.0	4,013.4	4,079.8	3,928.6	16.8	22.0	-32.67	-372.4	909.2	307.6	280.9	26.68	11.526		
4,200.0	4,110.3	4,179.5	4,023.4	17.4	22.7	-32.65	-385.3	937.3	315.1	287.6	27.46	11.475		
4,300.0	4,207.2	4,279.2	4,118.2	17.9	23.4	-32.62	-398.1	965.3	322.6	294.3	28.23	11.426		
4,400.0	4,304.2	4,378.9	4,213.0	18.4	24.0	-32.60	-411.0	993.3	330.1	301.1	29.00	11.380		
4,500.0	4,401.1	4,478.6	4,307.8	18.9	24.7	-32.58	-423.9	1,021.4	337.6	307.8	29.78	11.336		
4,600.0	4,498.0	4,578.3	4,402.7	19.5	25.3	-32.56	-436.8	1,049.4	345.1	314.5	30.55	11.294		
4,700.0	4,595.0	4,678.1	4,497.5	20.0	26.0	-32.54	-449.7	1,077.5	352.6	321.3	31.33	11.255		
4,800.0	4,691.9	4,777.8	4,592.3	20.5	26.7	-32.52	-462.5	1,105.5	360.1	328.0	32.10	11.217		
4,900.0	4,788.8	4,877.5	4,687.1	21.1	27.3	-32.50	-475.4	1,133.6	367.6	334.7	32.88	11.181		

CC - Min centre to center distance or convergent point, SF - min separation factor, ES - min ellipse separation

Offset Design										SRC Evans East Pad Sec.26-T5N-R66W - SRC Evans 43-26-23-14NHZ - Wellbore #1 - Plan #1 (10-27				Offset Site Error:		0.0 ft
Survey Program: 0-MWD														Offset Well Error:		0.0 ft
Reference		Offset		Semi Major Axis			Distance									
Measured Depth	Vertical Depth	Measured Depth	Vertical Depth	Reference	Offset	Highside Toolface	Offset Wellbore Centre		Between Centres	Between Ellipses	Minimum Separation	Separation Factor	Warning			
(ft)	(ft)	(ft)	(ft)	(ft)	(ft)	(°)	+N/-S (ft)	+E/-W (ft)	(ft)	(ft)	(ft)					
5,000.0	4,885.8	4,977.2	4,782.0	21.6	28.0	-32.48	-488.3	1,161.6	375.1	341.5	33.65	11.146				
5,100.0	4,982.7	5,076.9	4,876.8	22.1	28.7	-32.47	-501.2	1,189.7	382.6	348.2	34.43	11.113				
5,200.0	5,079.6	5,176.7	4,971.6	22.7	29.3	-32.45	-514.1	1,217.7	390.1	354.9	35.20	11.082				
5,300.0	5,176.6	5,276.4	5,066.4	23.2	30.0	-32.43	-526.9	1,245.8	397.6	361.6	35.98	11.051				
5,400.0	5,273.5	5,376.1	5,161.2	23.8	30.6	-32.42	-539.8	1,273.8	405.1	368.4	36.76	11.022				
5,500.0	5,370.4	5,475.8	5,256.1	24.3	31.3	-32.40	-552.7	1,301.8	412.6	375.1	37.53	10.994				
5,600.0	5,467.4	5,575.5	5,350.9	24.8	32.0	-32.39	-565.6	1,329.9	420.1	381.8	38.31	10.968				
5,700.0	5,564.3	5,675.2	5,445.7	25.4	32.6	-32.38	-578.5	1,357.9	427.7	388.6	39.08	10.942				
5,800.0	5,661.2	5,775.0	5,540.5	25.9	33.3	-32.36	-591.3	1,386.0	435.2	395.3	39.86	10.917				
5,900.0	5,758.2	5,874.7	5,635.3	26.4	34.0	-32.35	-604.2	1,414.0	442.7	402.0	40.64	10.894				
6,000.0	5,855.1	5,974.4	5,730.2	27.0	34.6	-32.34	-617.1	1,442.1	450.2	408.8	41.41	10.871				
6,100.0	5,952.1	6,074.1	5,825.0	27.5	35.3	-32.33	-630.0	1,470.1	457.7	415.5	42.19	10.849				
6,200.0	6,049.0	6,173.8	5,919.8	28.0	35.9	-32.32	-642.9	1,498.2	465.2	422.2	42.96	10.827				
6,230.2	6,078.3	6,204.0	5,948.5	28.2	36.1	-32.31	-646.8	1,506.6	467.5	424.3	43.20	10.821				
6,250.0	6,097.5	6,223.7	5,967.2	28.3	36.3	-26.75	-649.3	1,512.2	468.9	425.6	43.39	10.808				
6,300.0	6,146.2	6,273.4	6,014.5	28.5	36.6	-9.88	-655.7	1,526.2	472.6	429.0	43.67	10.824				
6,350.0	6,195.1	6,322.9	6,061.5	28.6	36.9	9.08	-662.1	1,540.1	476.3	432.6	43.70	10.900				
6,400.0	6,243.9	6,371.8	6,108.1	28.8	37.2	26.60	-668.3	1,553.9	480.2	436.6	43.51	11.034				
6,450.0	6,292.3	6,421.4	6,155.5	28.9	37.5	40.46	-672.0	1,567.9	484.2	440.9	43.23	11.200				
6,500.0	6,340.1	6,471.7	6,203.7	29.0	37.7	50.77	-672.2	1,582.1	488.4	445.5	42.91	11.382				
6,550.0	6,387.0	6,522.8	6,252.6	29.0	38.0	58.43	-668.8	1,596.6	492.7	450.2	42.57	11.575				
6,600.0	6,432.9	6,574.8	6,302.0	29.1	38.2	64.25	-661.6	1,611.1	497.2	455.0	42.22	11.777				
6,650.0	6,477.6	6,627.6	6,351.5	29.1	38.3	68.81	-650.5	1,625.7	501.8	459.9	41.87	11.984				
6,700.0	6,520.7	6,681.3	6,400.9	29.1	38.5	72.47	-635.4	1,640.3	506.4	464.9	41.53	12.194				
6,750.0	6,562.1	6,736.0	6,450.0	29.1	38.6	75.49	-616.1	1,654.7	511.1	469.9	41.21	12.402				
6,800.0	6,601.6	6,791.5	6,498.2	29.1	38.7	78.01	-592.5	1,668.9	515.7	474.8	40.91	12.605				
6,850.0	6,639.0	6,848.1	6,545.4	29.0	38.7	80.15	-564.6	1,682.8	520.2	479.6	40.65	12.799				
6,900.0	6,674.1	6,905.5	6,591.0	28.9	38.8	81.99	-532.3	1,696.2	524.6	484.2	40.42	12.980				
6,950.0	6,706.8	6,963.9	6,634.6	28.9	38.8	83.56	-495.8	1,709.0	528.8	488.6	40.23	13.143				
7,000.0	6,736.8	7,023.2	6,675.8	28.8	38.8	84.92	-455.0	1,721.1	532.8	492.7	40.10	13.285				
7,050.0	6,764.1	7,083.3	6,714.2	28.7	38.8	86.08	-410.1	1,732.3	536.4	496.4	40.03	13.401				
7,100.0	6,788.5	7,144.2	6,749.3	28.6	38.8	87.07	-361.4	1,742.5	539.8	499.8	40.02	13.488				
7,150.0	6,809.8	7,205.9	6,780.7	28.5	38.7	87.90	-309.1	1,751.7	542.8	502.7	40.08	13.541				
7,200.0	6,828.1	7,268.2	6,807.9	28.4	38.6	88.58	-253.6	1,759.6	545.3	505.1	40.23	13.556				
7,250.0	6,843.1	7,331.1	6,830.5	28.3	38.5	89.11	-195.3	1,766.1	547.4	507.0	40.45	13.533				
7,300.0	6,854.9	7,394.4	6,848.2	28.2	38.5	89.51	-134.8	1,771.2	549.1	508.3	40.76	13.471				
7,350.0	6,863.3	7,458.0	6,860.8	28.1	38.4	89.77	-72.6	1,774.8	550.2	509.0	41.15	13.369				
7,400.0	6,868.4	7,521.8	6,868.1	28.0	38.3	89.89	-9.2	1,776.8	550.8	509.2	41.64	13.229				
7,449.1	6,870.0	7,582.4	6,870.0	27.9	38.2	89.90	51.3	1,777.2	550.9	508.7	42.17	13.063				
7,500.0	6,870.0	7,633.4	6,870.0	27.8	38.1	89.90	102.3	1,777.1	550.9	508.3	42.59	12.936				
7,600.0	6,870.0	7,733.4	6,870.0	27.7	38.0	89.90	202.3	1,776.8	550.9	507.3	43.56	12.646				
7,700.0	6,870.0	7,833.4	6,870.0	27.8	38.0	89.90	302.3	1,776.6	550.9	506.0	44.85	12.284				
7,800.0	6,870.0	7,933.4	6,870.0	28.0	38.0	89.90	402.3	1,776.3	550.9	504.5	46.41	11.869				
7,900.0	6,870.0	8,033.4	6,870.0	28.4	38.1	89.90	502.3	1,776.1	550.9	502.7	48.23	11.421				
8,000.0	6,870.0	8,133.4	6,870.0	29.0	38.3	89.90	602.3	1,775.8	550.9	500.6	50.28	10.955				
8,100.0	6,870.0	8,233.4	6,870.0	29.8	38.6	89.90	702.3	1,775.6	550.9	498.3	52.54	10.486				
8,200.0	6,870.0	8,333.4	6,870.0	30.8	39.0	89.90	802.3	1,775.3	550.9	495.9	54.96	10.023				
8,300.0	6,870.0	8,433.4	6,870.0	31.9	39.6	89.90	902.3	1,775.1	550.9	493.3	57.55	9.573				
8,400.0	6,870.0	8,533.4	6,870.0	33.1	40.2	89.90	1,002.3	1,774.9	550.9	490.6	60.26	9.142				
8,500.0	6,870.0	8,633.4	6,870.0	34.4	41.0	89.90	1,102.3	1,774.6	550.9	487.8	63.09	8.731				
8,600.0	6,870.0	8,733.4	6,870.0	35.8	41.8	89.90	1,202.3	1,774.4	550.9	484.9	66.03	8.343				
8,700.0	6,870.0	8,833.4	6,870.0	37.2	42.8	89.90	1,302.3	1,774.1	550.9	481.8	69.05	7.978				

Company:	Synergy Resources	Local Co-ordinate Reference:	Well SRC Evans D-26-23-14NHZ
Project:	SEC.26-T5N-R66W	TVD Reference:	WELL @ 4768.0ft (RKB - 15')
Reference Site:	SRC Evans East Pad Sec.26-T5N-R66W	MD Reference:	WELL @ 4768.0ft (RKB - 15')
Site Error:	0.0ft	North Reference:	True
Reference Well:	SRC Evans D-26-23-14NHZ	Survey Calculation Method:	Minimum Curvature
Well Error:	0.0ft	Output errors are at	2.00 sigma
Reference Wellbore	Wellbore #1	Database:	Landmark
Reference Design:	Plan #1 (10-27-14)	Offset TVD Reference:	Offset Datum

Offset Design												Offset Site Error:	0.0 ft
Survey Program: 0-MWD												Offset Well Error:	0.0 ft
Reference		Offset		Semi Major Axis			Distance						Warning
Measured Depth (ft)	Vertical Depth (ft)	Measured Depth (ft)	Vertical Depth (ft)	Reference (ft)	Offset (ft)	Highside Toolface (°)	Offset Wellbore Centre +N/-S (ft)	+E/-W (ft)	Between Centres (ft)	Between Ellipses (ft)	Minimum Separation (ft)	Separation Factor	
8,800.0	6,870.0	8,933.4	6,870.0	38.7	43.9	89.90	1,402.3	1,773.9	550.9	478.7	72.16	7.635	
8,900.0	6,870.0	9,033.4	6,870.0	40.2	45.1	89.90	1,502.3	1,773.6	550.9	475.6	75.33	7.313	
9,000.0	6,870.0	9,133.4	6,870.0	41.8	46.3	89.90	1,602.3	1,773.4	550.9	472.3	78.56	7.013	
9,100.0	6,870.0	9,233.4	6,870.0	43.4	47.6	89.90	1,702.3	1,773.1	550.9	469.0	81.84	6.731	
9,200.0	6,870.0	9,333.4	6,870.0	45.0	49.0	89.90	1,802.3	1,772.9	550.9	465.7	85.17	6.468	
9,300.0	6,870.0	9,433.4	6,870.0	46.6	50.4	89.90	1,902.3	1,772.7	550.9	462.3	88.54	6.222	
9,400.0	6,870.0	9,533.4	6,870.0	48.3	51.9	89.90	2,002.3	1,772.4	550.9	458.9	91.95	5.991	
9,500.0	6,870.0	9,633.4	6,870.0	50.0	53.4	89.90	2,102.3	1,772.2	550.9	455.5	95.39	5.775	
9,600.0	6,870.0	9,733.4	6,870.0	51.7	54.9	89.90	2,202.3	1,771.9	550.9	452.0	98.86	5.572	
9,700.0	6,870.0	9,833.4	6,870.0	53.4	56.5	89.90	2,302.3	1,771.7	550.9	448.5	102.36	5.382	
9,800.0	6,870.0	9,933.4	6,870.0	55.1	58.0	89.90	2,402.3	1,771.4	550.9	445.0	105.88	5.203	
9,900.0	6,870.0	10,033.4	6,870.0	56.8	59.7	89.90	2,502.3	1,771.2	550.9	441.5	109.42	5.034	
10,000.0	6,870.0	10,133.4	6,870.0	58.6	61.3	89.90	2,602.3	1,770.9	550.9	437.9	112.99	4.876	
10,100.0	6,870.0	10,233.4	6,870.0	60.3	62.9	89.90	2,702.3	1,770.7	550.9	434.3	116.57	4.726	
10,200.0	6,870.0	10,333.4	6,870.0	62.1	64.6	89.90	2,802.3	1,770.5	550.9	430.7	120.16	4.585	
10,300.0	6,870.0	10,433.4	6,870.0	63.9	66.3	89.90	2,902.3	1,770.2	550.9	427.1	123.77	4.451	
10,400.0	6,870.0	10,533.4	6,870.0	65.6	68.0	89.90	3,002.3	1,770.0	550.9	423.5	127.40	4.324	
10,500.0	6,870.0	10,633.4	6,870.0	67.4	69.7	89.90	3,102.3	1,769.7	550.9	419.8	131.04	4.204	
10,600.0	6,870.0	10,733.4	6,870.0	69.2	71.4	89.90	3,202.3	1,769.5	550.9	416.2	134.68	4.090	
10,700.0	6,870.0	10,833.4	6,870.0	71.0	73.1	89.90	3,302.3	1,769.2	550.9	412.5	138.34	3.982	
10,800.0	6,870.0	10,933.4	6,870.0	72.8	74.8	89.90	3,402.3	1,769.0	550.9	408.9	142.01	3.879	
10,900.0	6,870.0	11,033.4	6,870.0	74.6	76.6	89.90	3,502.3	1,768.8	550.9	405.2	145.69	3.781	
11,000.0	6,870.0	11,133.4	6,870.0	76.5	78.3	89.90	3,602.3	1,768.5	550.9	401.5	149.38	3.688	
11,100.0	6,870.0	11,233.4	6,870.0	78.3	80.1	89.90	3,702.3	1,768.3	550.9	397.8	153.07	3.599	
11,200.0	6,870.0	11,333.4	6,870.0	80.1	81.9	89.90	3,802.3	1,768.0	550.9	394.1	156.77	3.514	
11,300.0	6,870.0	11,433.4	6,870.0	81.9	83.6	89.90	3,902.3	1,767.8	550.9	390.4	160.48	3.433	
11,400.0	6,870.0	11,533.4	6,870.0	83.8	85.4	89.90	4,002.3	1,767.5	550.9	386.7	164.19	3.355	
11,500.0	6,870.0	11,633.4	6,870.0	85.6	87.2	89.90	4,102.3	1,767.3	550.9	383.0	167.91	3.281	
11,600.0	6,870.0	11,733.4	6,870.0	87.4	89.0	89.90	4,202.3	1,767.0	550.9	379.2	171.64	3.210	
11,700.0	6,870.0	11,833.4	6,870.0	89.3	90.8	89.90	4,302.3	1,766.8	550.9	375.5	175.37	3.141	
11,800.0	6,870.0	11,933.4	6,870.0	91.1	92.6	89.90	4,402.3	1,766.6	550.9	371.8	179.10	3.076	
11,900.0	6,870.0	12,033.4	6,870.0	93.0	94.4	89.90	4,502.3	1,766.3	550.9	368.0	182.84	3.013	
12,000.0	6,870.0	12,133.4	6,870.0	94.8	96.2	89.90	4,602.3	1,766.1	550.9	364.3	186.59	2.952	
12,100.0	6,870.0	12,233.4	6,870.0	96.7	98.0	89.90	4,702.3	1,765.8	550.9	360.5	190.34	2.894	
12,200.0	6,870.0	12,333.4	6,870.0	98.6	99.9	89.90	4,802.3	1,765.6	550.9	356.8	194.09	2.838	
12,300.0	6,870.0	12,433.4	6,870.0	100.4	101.7	89.90	4,902.3	1,765.3	550.9	353.0	197.84	2.784	
12,400.0	6,870.0	12,533.4	6,870.0	102.3	103.5	89.90	5,002.3	1,765.1	550.9	349.3	201.60	2.733	
12,500.0	6,870.0	12,633.4	6,870.0	104.1	105.3	89.90	5,102.3	1,764.8	550.9	345.5	205.36	2.683	
12,600.0	6,870.0	12,733.4	6,870.0	106.0	107.2	89.90	5,202.3	1,764.6	550.9	341.8	209.13	2.634	
12,700.0	6,870.0	12,833.4	6,870.0	107.9	109.0	89.90	5,302.3	1,764.4	550.9	338.0	212.89	2.588	
12,800.0	6,870.0	12,933.4	6,870.0	109.7	110.8	89.90	5,402.3	1,764.1	550.9	334.2	216.66	2.543	
12,900.0	6,870.0	13,033.4	6,870.0	111.6	112.7	89.90	5,502.3	1,763.9	550.9	330.5	220.43	2.499	
13,000.0	6,870.0	13,133.4	6,870.0	113.5	114.5	89.90	5,602.3	1,763.6	550.9	326.7	224.21	2.457	
13,100.0	6,870.0	13,233.4	6,870.0	115.4	116.4	89.90	5,702.3	1,763.4	550.9	322.9	227.99	2.416	
13,200.0	6,870.0	13,333.4	6,870.0	117.2	118.2	89.90	5,802.3	1,763.1	550.9	319.1	231.77	2.377	
13,300.0	6,870.0	13,433.4	6,870.0	119.1	120.1	89.90	5,902.3	1,762.9	550.9	315.3	235.55	2.339	
13,400.0	6,870.0	13,533.4	6,870.0	121.0	121.9	89.90	6,002.3	1,762.6	550.9	311.6	239.33	2.302	
13,500.0	6,870.0	13,633.4	6,870.0	122.9	123.8	89.90	6,102.3	1,762.4	550.9	307.8	243.11	2.266	
13,600.0	6,870.0	13,733.4	6,870.0	124.8	125.6	89.90	6,202.3	1,762.2	550.9	304.0	246.90	2.231	
13,700.0	6,870.0	13,833.4	6,870.0	126.6	127.5	89.90	6,302.3	1,761.9	550.9	300.2	250.69	2.197	
13,800.0	6,870.0	13,933.4	6,870.0	128.5	129.4	89.90	6,402.3	1,761.7	550.9	296.4	254.48	2.165	
13,900.0	6,870.0	14,033.4	6,870.0	130.4	131.2	89.90	6,502.3	1,761.4	550.9	292.6	258.27	2.133	

CC - Min centre to center distance or convergent point, SF - min separation factor, ES - min ellipse separation

Offset Design												Offset Site Error:	
Survey Program: 0-MWD												Offset Well Error:	
Reference		Offset		Semi Major Axis			Distance					Warning	
Measured Depth (ft)	Vertical Depth (ft)	Measured Depth (ft)	Vertical Depth (ft)	Reference (ft)	Offset (ft)	Highside Toolface (°)	Offset Wellbore Centre +N/-S (ft)	+E/-W (ft)	Between Centres (ft)	Between Ellipses (ft)	Minimum Separation (ft)		Separation Factor
14,000.0	6,870.0	14,133.4	6,870.0	132.3	133.1	89.90	6,602.3	1,761.2	550.9	288.8	262.07	2.102	
14,100.0	6,870.0	14,233.4	6,870.0	134.2	135.0	89.90	6,702.3	1,760.9	550.9	285.0	265.86	2.072	
14,200.0	6,870.0	14,333.4	6,870.0	136.1	136.8	89.90	6,802.3	1,760.7	550.9	281.2	269.66	2.043	
14,300.0	6,870.0	14,433.4	6,870.0	137.9	138.7	89.90	6,902.3	1,760.4	550.9	277.4	273.45	2.015	
14,400.0	6,870.0	14,533.4	6,870.0	139.8	140.6	89.90	7,002.3	1,760.2	550.9	273.6	277.25	1.987	
14,500.0	6,870.0	14,633.4	6,870.0	141.7	142.4	89.90	7,102.3	1,760.0	550.9	269.8	281.05	1.960	
14,600.0	6,870.0	14,733.4	6,870.0	143.6	144.3	89.90	7,202.3	1,759.7	550.9	266.0	284.85	1.934	
14,700.0	6,870.0	14,833.4	6,870.0	145.5	146.2	89.90	7,302.3	1,759.5	550.9	262.2	288.65	1.908	
14,800.0	6,870.0	14,933.4	6,870.0	147.4	148.1	89.90	7,402.3	1,759.2	550.9	258.4	292.46	1.884	
14,900.0	6,870.0	15,033.4	6,870.0	149.3	149.9	89.90	7,502.3	1,759.0	550.9	254.6	296.26	1.859	
15,000.0	6,870.0	15,133.4	6,870.0	151.2	151.8	89.90	7,602.3	1,758.7	550.9	250.8	300.07	1.836	
15,100.0	6,870.0	15,233.4	6,870.0	153.1	153.7	89.90	7,702.3	1,758.5	550.9	247.0	303.87	1.813	
15,200.0	6,870.0	15,333.4	6,870.0	155.0	155.6	89.90	7,802.3	1,758.2	550.9	243.2	307.68	1.790	
15,300.0	6,870.0	15,433.4	6,870.0	156.9	157.4	89.90	7,902.3	1,758.0	550.9	239.4	311.49	1.769	
15,400.0	6,870.0	15,533.4	6,870.0	158.8	159.3	89.90	8,002.3	1,757.8	550.9	235.6	315.30	1.747	
15,500.0	6,870.0	15,633.4	6,870.0	160.7	161.2	89.90	8,102.3	1,757.5	550.9	231.8	319.11	1.726	
15,600.0	6,870.0	15,733.4	6,870.0	162.6	163.1	89.90	8,202.3	1,757.3	550.9	228.0	322.92	1.706	
15,700.0	6,870.0	15,833.4	6,870.0	164.5	165.0	89.90	8,302.3	1,757.0	550.9	224.2	326.73	1.686	
15,800.0	6,870.0	15,933.4	6,870.0	166.4	166.9	89.90	8,402.3	1,756.8	550.9	220.3	330.54	1.667	
15,900.0	6,870.0	16,033.4	6,870.0	168.3	168.7	89.90	8,502.3	1,756.5	550.9	216.5	334.35	1.648	
16,000.0	6,870.0	16,133.4	6,870.0	170.2	170.6	89.90	8,602.3	1,756.3	550.9	212.7	338.16	1.629	
16,100.0	6,870.0	16,233.4	6,870.0	172.1	172.5	89.90	8,702.3	1,756.0	550.9	208.9	341.98	1.611	
16,200.0	6,870.0	16,333.4	6,870.0	174.0	174.4	89.90	8,802.3	1,755.8	550.9	205.1	345.79	1.593	
16,300.0	6,870.0	16,433.4	6,870.0	175.9	176.3	89.90	8,902.3	1,755.6	550.9	201.3	349.61	1.576	
16,400.0	6,870.0	16,533.4	6,870.0	177.8	178.2	89.90	9,002.3	1,755.3	550.9	197.5	353.42	1.559	
16,500.0	6,870.0	16,633.4	6,870.0	179.7	180.1	89.90	9,102.3	1,755.1	550.9	193.6	357.24	1.542	
16,600.0	6,870.0	16,733.4	6,870.0	181.6	182.0	89.90	9,202.3	1,754.8	550.9	189.8	361.06	1.526	
16,700.0	6,870.0	16,833.4	6,870.0	183.5	183.9	89.90	9,302.3	1,754.6	550.9	186.0	364.87	1.510	
16,716.6	6,870.0	16,850.0	6,870.0	183.8	184.2	89.90	9,318.9	1,754.5	550.9	185.4	365.51	1.507	
16,746.0	6,870.0	16,857.4	6,870.0	184.3	184.3	89.90	9,326.3	1,754.5	551.3	185.1	366.21	1.505 SF	

Company:	Synergy Resources	Local Co-ordinate Reference:	Well SRC Evans D-26-23-14NHZ
Project:	SEC.26-T5N-R66W	TVD Reference:	WELL @ 4768.0ft (RKB - 15')
Reference Site:	SRC Evans East Pad Sec.26-T5N-R66W	MD Reference:	WELL @ 4768.0ft (RKB - 15')
Site Error:	0.0ft	North Reference:	True
Reference Well:	SRC Evans D-26-23-14NHZ	Survey Calculation Method:	Minimum Curvature
Well Error:	0.0ft	Output errors are at	2.00 sigma
Reference Wellbore	Wellbore #1	Database:	Landmark
Reference Design:	Plan #1 (10-27-14)	Offset TVD Reference:	Offset Datum

Offset Design													Offset Site Error:	0.0 ft
Survey Program: 0-MWD													Offset Well Error:	0.0 ft
Reference		Offset		Semi Major Axis			Distance							Warning
Measured Depth (ft)	Vertical Depth (ft)	Measured Depth (ft)	Vertical Depth (ft)	Reference (ft)	Offset (ft)	Highside Toolface (°)	Offset Wellbore Centre +N/-S (ft)	+E/-W (ft)	Between Centres (ft)	Between Ellipses (ft)	Minimum Separation (ft)	Separation Factor		
0.0	0.0	1.0	1.0	0.0	0.0	0.00	22.6	0.0	22.6	22.6	0.00	N/A		
100.0	100.0	101.0	101.0	0.1	0.1	0.00	22.6	0.0	22.6	22.4	0.23	99.515		
200.0	200.0	201.0	201.0	0.3	0.3	0.00	22.6	0.0	22.6	21.9	0.68	33.392		
300.0	300.0	301.0	301.0	0.6	0.6	0.00	22.6	0.0	22.6	21.5	1.13	20.062		
400.0	400.0	401.0	401.0	0.8	0.8	0.00	22.6	0.0	22.6	21.0	1.58	14.338		
500.0	500.0	501.0	501.0	1.0	1.0	0.00	22.6	0.0	22.6	20.6	2.03	11.155		
600.0	600.0	601.0	601.0	1.2	1.2	0.00	22.6	0.0	22.6	20.1	2.47	9.130		
700.0	700.0	701.3	701.3	1.5	1.4	4.17	21.8	1.6	21.8	18.9	2.91	7.511		
800.0	800.0	801.4	801.2	1.7	1.6	17.99	19.3	6.3	20.3	17.0	3.33	6.103		
843.4	843.4	844.8	844.5	1.8	1.7	-95.36	17.8	9.3	20.1	16.5	3.51	5.708 CC, ES		
900.0	900.0	901.2	900.6	1.9	1.9	-84.20	15.3	14.0	20.5	16.7	3.75	5.458		
1,000.0	999.8	1,000.7	999.4	2.1	2.1	-67.04	9.6	24.8	23.2	19.0	4.18	5.537		
1,100.0	1,099.5	1,100.0	1,097.5	2.3	2.4	-54.66	2.5	38.6	27.6	23.0	4.64	5.959		
1,200.0	1,198.7	1,198.9	1,194.6	2.5	2.7	-46.36	-6.3	55.3	33.2	28.1	5.11	6.491		
1,300.0	1,297.5	1,297.7	1,290.8	2.8	3.1	-40.84	-16.5	74.9	39.3	33.7	5.61	7.012		
1,400.0	1,395.6	1,396.7	1,386.5	3.1	3.6	-37.24	-28.3	97.4	45.7	39.6	6.14	7.442		
1,500.0	1,493.1	1,496.6	1,482.9	3.5	4.1	-36.35	-40.4	120.7	50.0	43.3	6.74	7.426		
1,511.2	1,503.9	1,507.8	1,493.7	3.6	4.2	-36.41	-41.8	123.3	50.3	43.5	6.81	7.391		
1,600.0	1,590.0	1,596.6	1,579.3	3.9	4.6	-36.99	-52.6	144.1	52.6	45.2	7.42	7.098		
1,700.0	1,686.9	1,696.5	1,675.8	4.4	5.1	-37.58	-64.8	167.4	55.3	47.1	8.13	6.795		
1,800.0	1,783.9	1,796.5	1,772.2	4.9	5.7	-38.12	-77.0	190.7	57.9	49.0	8.87	6.522		
1,900.0	1,880.8	1,896.5	1,868.6	5.4	6.2	-38.61	-89.1	214.1	60.5	50.9	9.64	6.278		
2,000.0	1,977.7	1,996.4	1,965.1	5.8	6.8	-39.06	-101.3	237.4	63.1	52.7	10.42	6.060		
2,100.0	2,074.7	2,096.4	2,061.5	6.3	7.3	-39.47	-113.5	260.7	65.8	54.5	11.21	5.866		
2,200.0	2,171.6	2,196.3	2,158.0	6.9	7.9	-39.85	-125.7	284.0	68.4	56.4	12.02	5.691		
2,300.0	2,268.5	2,296.3	2,254.4	7.4	8.4	-40.21	-137.8	307.4	71.0	58.2	12.83	5.535		
2,400.0	2,365.5	2,396.3	2,350.8	7.9	9.0	-40.53	-150.0	330.7	73.7	60.0	13.66	5.393		
2,500.0	2,462.4	2,496.2	2,447.3	8.4	9.5	-40.84	-162.2	354.0	76.3	61.8	14.49	5.266		
2,600.0	2,559.3	2,596.2	2,543.7	8.9	10.1	-41.13	-174.4	377.4	78.9	63.6	15.33	5.150		
2,700.0	2,656.3	2,696.2	2,640.1	9.4	10.6	-41.39	-186.6	400.7	81.6	65.4	16.18	5.044		
2,800.0	2,753.2	2,796.1	2,736.6	9.9	11.2	-41.64	-198.7	424.0	84.2	67.2	17.03	4.947		
2,900.0	2,850.1	2,896.1	2,833.0	10.5	11.8	-41.88	-210.9	447.4	86.9	69.0	17.88	4.859		
3,000.0	2,947.1	2,996.1	2,929.5	11.0	12.3	-42.10	-223.1	470.7	89.5	70.8	18.74	4.778		
3,100.0	3,044.0	3,096.0	3,025.9	11.5	12.9	-42.31	-235.3	494.0	92.2	72.6	19.60	4.703		
3,200.0	3,140.9	3,196.0	3,122.3	12.1	13.5	-42.50	-247.4	517.4	94.8	74.4	20.47	4.633		
3,300.0	3,237.9	3,296.0	3,218.8	12.6	14.0	-42.69	-259.6	540.7	97.5	76.2	21.34	4.569		
3,400.0	3,334.8	3,395.9	3,315.2	13.1	14.6	-42.86	-271.8	564.0	100.1	77.9	22.21	4.509		
3,500.0	3,431.8	3,495.9	3,411.6	13.6	15.2	-43.03	-284.0	587.4	102.8	79.7	23.08	4.454		
3,600.0	3,528.7	3,595.8	3,508.1	14.2	15.7	-43.19	-296.2	610.7	105.5	81.5	23.96	4.402		
3,700.0	3,625.6	3,695.8	3,604.5	14.7	16.3	-43.34	-308.3	634.0	108.1	83.3	24.84	4.353		
3,800.0	3,722.6	3,795.8	3,701.0	15.2	16.9	-43.48	-320.5	657.3	110.8	85.1	25.72	4.307		
3,900.0	3,819.5	3,895.7	3,797.4	15.8	17.4	-43.62	-332.7	680.7	113.4	86.8	26.60	4.265		
4,000.0	3,916.4	3,995.7	3,893.8	16.3	18.0	-43.75	-344.9	704.0	116.1	88.6	27.48	4.224		
4,100.0	4,013.4	4,095.7	3,990.3	16.8	18.6	-43.88	-357.0	727.3	118.7	90.4	28.37	4.186		
4,200.0	4,110.3	4,195.6	4,086.7	17.4	19.1	-43.99	-369.2	750.7	121.4	92.2	29.25	4.150		
4,300.0	4,207.2	4,295.6	4,183.2	17.9	19.7	-44.11	-381.4	774.0	124.1	93.9	30.14	4.117		
4,400.0	4,304.2	4,395.6	4,279.6	18.4	20.3	-44.22	-393.6	797.3	126.7	95.7	31.03	4.085		
4,500.0	4,401.1	4,495.5	4,376.0	18.9	20.8	-44.32	-405.8	820.7	129.4	97.5	31.91	4.054		
4,600.0	4,498.0	4,595.5	4,472.5	19.5	21.4	-44.42	-417.9	844.0	132.0	99.2	32.80	4.025		
4,700.0	4,595.0	4,695.5	4,568.9	20.0	22.0	-44.52	-430.1	867.3	134.7	101.0	33.70	3.998		
4,800.0	4,691.9	4,795.4	4,665.3	20.5	22.5	-44.61	-442.3	890.7	137.4	102.8	34.59	3.972		
4,900.0	4,788.8	4,895.4	4,761.8	21.1	23.1	-44.70	-454.5	914.0	140.0	104.6	35.48	3.947		

CC - Min centre to center distance or convergent point, SF - min separation factor, ES - min ellipse separation

Company:	Synergy Resources	Local Co-ordinate Reference:	Well SRC Evans D-26-23-14NHZ
Project:	SEC.26-T5N-R66W	TVD Reference:	WELL @ 4768.0ft (RKB - 15')
Reference Site:	SRC Evans East Pad Sec.26-T5N-R66W	MD Reference:	WELL @ 4768.0ft (RKB - 15')
Site Error:	0.0ft	North Reference:	True
Reference Well:	SRC Evans D-26-23-14NHZ	Survey Calculation Method:	Minimum Curvature
Well Error:	0.0ft	Output errors are at	2.00 sigma
Reference Wellbore	Wellbore #1	Database:	Landmark
Reference Design:	Plan #1 (10-27-14)	Offset TVD Reference:	Offset Datum

Offset Design												Offset Site Error:	0.0 ft
Survey Program: 0-MWD												Offset Well Error:	0.0 ft
Reference		Offset		Semi Major Axis			Distance						Warning
Measured Depth (ft)	Vertical Depth (ft)	Measured Depth (ft)	Vertical Depth (ft)	Reference (ft)	Offset (ft)	Highside Toolface (°)	Offset Wellbore Centre +N/-S (ft)	+E/-W (ft)	Between Centres (ft)	Between Ellipses (ft)	Minimum Separation (ft)	Separation Factor	
5,000.0	4,885.8	4,995.4	4,858.2	21.6	23.7	-44.79	-466.6	937.3	142.7	106.3	36.37	3.923	
5,100.0	4,982.7	5,095.3	4,954.7	22.1	24.2	-44.87	-478.8	960.7	145.4	108.1	37.27	3.901	
5,200.0	5,079.6	5,195.3	5,051.1	22.7	24.8	-44.95	-491.0	984.0	148.0	109.9	38.16	3.879	
5,300.0	5,176.6	5,295.2	5,147.5	23.2	25.4	-45.03	-503.2	1,007.3	150.7	111.6	39.06	3.858	
5,400.0	5,273.5	5,395.2	5,244.0	23.8	26.0	-45.10	-515.4	1,030.7	153.4	113.4	39.95	3.838	
5,500.0	5,370.4	5,495.2	5,340.4	24.3	26.5	-45.17	-527.5	1,054.0	156.0	115.2	40.85	3.819	
5,600.0	5,467.4	5,595.1	5,436.8	24.8	27.1	-45.24	-539.7	1,077.3	158.7	116.9	41.75	3.801	
5,700.0	5,564.3	5,695.1	5,533.3	25.4	27.7	-45.31	-551.9	1,100.6	161.3	118.7	42.64	3.784	
5,800.0	5,661.2	5,795.1	5,629.7	25.9	28.2	-45.38	-564.1	1,124.0	164.0	120.5	43.54	3.767	
5,900.0	5,758.2	5,895.0	5,726.2	26.4	28.8	-45.44	-576.2	1,147.3	166.7	122.2	44.44	3.751	
6,000.0	5,855.1	5,995.0	5,822.6	27.0	29.4	-45.50	-588.4	1,170.6	169.3	124.0	45.34	3.735	
6,100.0	5,952.1	6,095.0	5,919.0	27.5	29.9	-45.56	-600.6	1,194.0	172.0	125.8	46.24	3.720	
6,200.0	6,049.0	6,194.9	6,015.5	28.0	30.5	-45.62	-612.8	1,217.3	174.7	127.5	47.13	3.706	
6,230.2	6,078.3	6,225.1	6,044.6	28.2	30.7	-45.63	-616.5	1,224.4	175.5	128.1	47.41	3.702	
6,250.0	6,097.5	6,244.9	6,063.7	28.3	30.8	-39.95	-618.9	1,229.0	175.9	128.4	47.55	3.700	
6,300.0	6,146.2	6,294.8	6,111.8	28.5	31.1	-22.26	-624.9	1,240.6	176.5	129.0	47.47	3.718	
6,350.0	6,195.1	6,344.4	6,159.7	28.6	31.4	-1.75	-631.0	1,252.2	176.4	129.6	46.81	3.769	
6,400.0	6,243.9	6,393.4	6,207.0	28.8	31.6	18.04	-637.0	1,263.6	176.1	130.4	45.61	3.860	
6,437.0	6,279.8	6,429.2	6,241.5	28.9	31.8	30.95	-641.3	1,272.0	175.9	131.5	44.40	3.961	
6,450.0	6,292.3	6,441.7	6,253.5	28.9	31.9	35.09	-642.8	1,274.9	175.9	132.0	43.94	4.004	
6,500.0	6,340.1	6,488.9	6,299.1	29.0	32.2	49.44	-648.6	1,285.9	176.8	134.8	41.96	4.213	
6,550.0	6,387.0	6,534.9	6,343.4	29.0	32.4	61.75	-654.2	1,296.6	179.5	139.6	39.90	4.500	
6,600.0	6,432.9	6,579.3	6,386.3	29.1	32.7	72.52	-659.6	1,307.0	185.1	147.1	37.99	4.872	
6,650.0	6,477.6	6,623.2	6,428.6	29.1	32.9	82.12	-664.9	1,317.3	194.3	157.9	36.38	5.340	
6,700.0	6,520.7	6,671.1	6,475.1	29.1	33.2	90.94	-668.4	1,328.5	206.7	171.7	35.04	5.899	
6,750.0	6,562.1	6,721.2	6,523.7	29.1	33.3	98.60	-668.7	1,340.2	221.7	187.7	34.03	6.515	
6,800.0	6,601.6	6,773.6	6,574.5	29.1	33.5	105.25	-665.3	1,352.5	238.7	205.5	33.19	7.192	
6,850.0	6,639.0	6,828.7	6,627.6	29.0	33.7	111.04	-657.5	1,365.3	257.2	224.8	32.39	7.941	
6,900.0	6,674.1	6,887.0	6,682.9	28.9	33.8	116.08	-644.8	1,378.6	276.7	245.1	31.53	8.775	
6,950.0	6,706.8	6,948.8	6,740.2	28.9	33.9	120.47	-626.3	1,392.4	296.6	266.1	30.56	9.708	
7,000.0	6,736.8	7,014.6	6,799.3	28.8	34.0	124.32	-601.1	1,406.7	316.7	287.3	29.47	10.748	
7,050.0	6,764.1	7,084.9	6,859.7	28.7	34.0	127.67	-568.2	1,421.2	336.5	308.2	28.28	11.897	
7,100.0	6,788.5	7,160.3	6,920.5	28.6	34.0	130.59	-526.3	1,435.8	355.4	328.4	27.04	13.146	
7,150.0	6,809.8	7,241.1	6,980.7	28.5	34.0	133.10	-474.3	1,450.2	373.2	347.4	25.80	14.463	
7,200.0	6,828.1	7,327.7	7,038.4	28.4	33.9	135.23	-411.3	1,464.0	389.3	364.6	24.67	15.782	
7,250.0	6,843.1	7,420.1	7,091.3	28.3	33.8	136.98	-336.7	1,476.6	403.2	379.5	23.73	16.994	
7,300.0	6,854.9	7,518.0	7,136.7	28.2	33.7	138.35	-250.8	1,487.3	414.6	391.5	23.10	17.943	
7,350.0	6,863.3	7,620.6	7,171.6	28.1	33.5	139.32	-154.7	1,495.5	422.9	400.0	22.91	18.461	
7,400.0	6,868.4	7,726.7	7,193.4	28.0	33.3	139.89	-51.1	1,500.5	427.8	404.6	23.21	18.433	
7,449.1	6,870.0	7,828.8	7,200.0	27.9	33.1	140.05	50.7	1,501.9	429.2	405.2	24.00	17.881	
7,500.0	6,870.0	7,879.7	7,200.0	27.8	33.1	140.05	101.6	1,501.8	429.2	404.9	24.28	17.674	
7,600.0	6,870.0	7,979.7	7,200.0	27.7	33.0	140.05	201.6	1,501.5	429.2	404.2	24.99	17.173	
7,700.0	6,870.0	8,079.7	7,200.0	27.8	33.0	140.05	301.6	1,501.3	429.2	403.2	25.96	16.534	
7,800.0	6,870.0	8,179.7	7,200.0	28.0	33.1	140.05	401.6	1,501.0	429.2	402.0	27.16	15.803	
7,900.0	6,870.0	8,279.7	7,200.0	28.4	33.3	140.05	501.6	1,500.8	429.2	400.6	28.57	15.024	
8,000.0	6,870.0	8,379.7	7,200.0	29.0	33.6	140.05	601.6	1,500.5	429.2	399.0	30.15	14.234	
8,100.0	6,870.0	8,479.7	7,200.0	29.8	34.1	140.05	701.6	1,500.3	429.2	397.3	31.89	13.458	
8,200.0	6,870.0	8,579.7	7,200.0	30.8	34.7	140.05	801.6	1,500.1	429.2	395.4	33.76	12.714	
8,300.0	6,870.0	8,679.7	7,200.0	31.9	35.5	140.05	901.6	1,499.8	429.2	393.4	35.73	12.011	
8,400.0	6,870.0	8,779.7	7,200.0	33.1	36.5	140.05	1,001.6	1,499.6	429.2	391.4	37.80	11.355	
8,500.0	6,870.0	8,879.7	7,200.0	34.4	37.5	140.05	1,101.6	1,499.3	429.2	389.2	39.94	10.745	
8,600.0	6,870.0	8,979.7	7,200.0	35.8	38.6	140.05	1,201.6	1,499.1	429.2	387.0	42.15	10.182	

CC - Min centre to center distance or convergent point, SF - min separation factor, ES - min ellipse separation

Company:	Synergy Resources	Local Co-ordinate Reference:	Well SRC Evans D-26-23-14NHZ
Project:	SEC.26-T5N-R66W	TVD Reference:	WELL @ 4768.0ft (RKB - 15')
Reference Site:	SRC Evans East Pad Sec.26-T5N-R66W	MD Reference:	WELL @ 4768.0ft (RKB - 15')
Site Error:	0.0ft	North Reference:	True
Reference Well:	SRC Evans D-26-23-14NHZ	Survey Calculation Method:	Minimum Curvature
Well Error:	0.0ft	Output errors are at	2.00 sigma
Reference Wellbore	Wellbore #1	Database:	Landmark
Reference Design:	Plan #1 (10-27-14)	Offset TVD Reference:	Offset Datum

Offset Design												Offset Site Error:	0.0ft
Survey Program: 0-MWDD												Offset Well Error:	0.0ft
Reference		Offset		Semi Major Axis			Distance						Warning
Measured Depth (ft)	Vertical Depth (ft)	Measured Depth (ft)	Vertical Depth (ft)	Reference (ft)	Offset (ft)	Highside Toolface (°)	Offset Wellbore Centre +N/-S (ft)	+E/-W (ft)	Between Centres (ft)	Between Ellipses (ft)	Minimum Separation (ft)	Separation Factor	
8,700.0	6,870.0	9,079.7	7,200.0	37.2	39.9	140.05	1,301.6	1,498.8	429.2	384.8	44.41	9.663	
8,800.0	6,870.0	9,179.7	7,200.0	38.7	41.2	140.05	1,401.6	1,498.6	429.2	382.5	46.72	9.185	
8,900.0	6,870.0	9,279.7	7,200.0	40.2	42.6	140.05	1,501.6	1,498.3	429.2	380.1	49.08	8.745	
9,000.0	6,870.0	9,379.7	7,200.0	41.8	44.0	140.05	1,601.6	1,498.1	429.2	377.7	51.46	8.339	
9,100.0	6,870.0	9,479.7	7,200.0	43.4	45.5	140.05	1,701.6	1,497.9	429.2	375.3	53.88	7.965	
9,200.0	6,870.0	9,579.7	7,200.0	45.0	47.0	140.05	1,801.6	1,497.6	429.2	372.9	56.33	7.619	
9,300.0	6,870.0	9,679.7	7,200.0	46.6	48.5	140.05	1,901.6	1,497.4	429.2	370.4	58.79	7.300	
9,400.0	6,870.0	9,779.7	7,200.0	48.3	50.1	140.05	2,001.6	1,497.1	429.2	367.9	61.28	7.003	
9,500.0	6,870.0	9,879.7	7,200.0	50.0	51.7	140.05	2,101.6	1,496.9	429.2	365.4	63.79	6.728	
9,600.0	6,870.0	9,979.7	7,200.0	51.7	53.3	140.05	2,201.6	1,496.6	429.2	362.9	66.31	6.472	
9,700.0	6,870.0	10,079.7	7,200.0	53.4	54.9	140.05	2,301.6	1,496.4	429.2	360.3	68.85	6.234	
9,708.5	6,870.0	10,088.2	7,200.0	53.5	55.1	140.05	2,310.1	1,496.4	429.2	360.1	69.06	6.214	
9,800.0	6,870.0	10,179.7	7,200.0	55.1	56.6	140.05	2,401.6	1,496.1	429.2	357.8	71.40	6.011	
9,900.0	6,870.0	10,279.7	7,200.0	56.8	58.3	140.05	2,501.6	1,495.9	429.2	355.2	73.96	5.803	
10,000.0	6,870.0	10,379.7	7,200.0	58.6	59.9	140.05	2,601.6	1,495.7	429.2	352.6	76.53	5.608	
10,100.0	6,870.0	10,479.7	7,200.0	60.3	61.6	140.05	2,701.6	1,495.4	429.2	350.1	79.11	5.425	
10,200.0	6,870.0	10,579.7	7,200.0	62.1	63.4	140.05	2,801.6	1,495.2	429.2	347.5	81.70	5.253	
10,300.0	6,870.0	10,679.7	7,200.0	63.9	65.1	140.05	2,901.6	1,494.9	429.2	344.9	84.30	5.091	
10,400.0	6,870.0	10,779.7	7,200.0	65.6	66.8	140.05	3,001.6	1,494.7	429.2	342.3	86.90	4.939	
10,500.0	6,870.0	10,879.7	7,200.0	67.4	68.6	140.05	3,101.6	1,494.4	429.2	339.7	89.51	4.795	
10,600.0	6,870.0	10,979.7	7,200.0	69.2	70.3	140.05	3,201.6	1,494.2	429.2	337.1	92.12	4.659	
10,700.0	6,870.0	11,079.7	7,200.0	71.0	72.1	140.05	3,301.6	1,493.9	429.2	334.4	94.75	4.530	
10,800.0	6,870.0	11,179.7	7,200.0	72.8	73.9	140.05	3,401.6	1,493.7	429.2	331.8	97.37	4.408	
10,900.0	6,870.0	11,279.7	7,200.0	74.6	75.6	140.05	3,501.6	1,493.5	429.2	329.2	100.00	4.292	
11,000.0	6,870.0	11,379.7	7,200.0	76.5	77.4	140.05	3,601.6	1,493.2	429.2	326.5	102.64	4.182	
11,100.0	6,870.0	11,479.7	7,200.0	78.3	79.2	140.05	3,701.6	1,493.0	429.2	323.9	105.27	4.077	
11,200.0	6,870.0	11,579.7	7,200.0	80.1	81.0	140.05	3,801.6	1,492.7	429.2	321.3	107.92	3.977	
11,208.5	6,870.0	11,588.2	7,200.0	80.3	81.2	140.05	3,810.1	1,492.7	429.2	321.0	108.14	3.969	
11,300.0	6,870.0	11,679.7	7,200.0	81.9	82.8	140.05	3,901.6	1,492.5	429.2	318.6	110.56	3.882	
11,400.0	6,870.0	11,779.7	7,200.0	83.8	84.6	140.05	4,001.6	1,492.2	429.2	316.0	113.21	3.791	
11,500.0	6,870.0	11,879.7	7,200.0	85.6	86.4	140.05	4,101.6	1,492.0	429.2	313.3	115.86	3.704	
11,600.0	6,870.0	11,979.7	7,200.0	87.4	88.2	140.05	4,201.6	1,491.7	429.2	310.7	118.51	3.621	
11,668.1	6,870.0	12,047.9	7,200.0	88.7	89.5	140.05	4,269.7	1,491.6	429.2	308.9	120.32	3.567	
11,700.0	6,870.0	12,079.7	7,200.0	89.3	90.1	140.05	4,301.6	1,491.5	429.2	308.0	121.17	3.542	
11,800.0	6,870.0	12,179.7	7,200.0	91.1	91.9	140.05	4,401.6	1,491.3	429.2	305.3	123.83	3.466	
11,900.0	6,870.0	12,279.7	7,200.0	93.0	93.7	140.05	4,501.6	1,491.0	429.2	302.7	126.49	3.393	
12,000.0	6,870.0	12,379.7	7,200.0	94.8	95.5	140.05	4,601.6	1,490.8	429.2	300.0	129.15	3.323	
12,100.0	6,870.0	12,479.7	7,200.0	96.7	97.4	140.05	4,701.6	1,490.5	429.2	297.4	131.82	3.256	
12,200.0	6,870.0	12,579.7	7,200.0	98.6	99.2	140.05	4,801.6	1,490.3	429.2	294.7	134.48	3.191	
12,300.0	6,870.0	12,679.7	7,200.0	100.4	101.1	140.05	4,901.6	1,490.0	429.2	292.0	137.15	3.129	
12,368.1	6,870.0	12,747.9	7,200.0	101.7	102.3	140.05	4,969.7	1,489.9	429.2	290.2	138.97	3.088	
12,400.0	6,870.0	12,779.7	7,200.0	102.3	102.9	140.05	5,001.6	1,489.8	429.2	289.4	139.82	3.069	
12,500.0	6,870.0	12,879.7	7,200.0	104.1	104.8	140.05	5,101.6	1,489.6	429.2	286.7	142.49	3.012	
12,600.0	6,870.0	12,979.7	7,200.0	106.0	106.6	140.05	5,201.6	1,489.3	429.2	284.0	145.17	2.956	
12,700.0	6,870.0	13,079.7	7,200.0	107.9	108.5	140.05	5,301.6	1,489.1	429.2	281.3	147.84	2.903	
12,712.6	6,870.0	13,092.3	7,200.0	108.1	108.7	140.05	5,314.2	1,489.0	429.2	281.0	148.18	2.896	
12,800.0	6,870.0	13,179.7	7,200.0	109.7	110.3	140.05	5,401.6	1,488.8	429.2	278.7	150.52	2.851	
12,900.0	6,870.0	13,279.7	7,200.0	111.6	112.2	140.05	5,501.6	1,488.6	429.2	276.0	153.19	2.802	
13,000.0	6,870.0	13,379.7	7,200.0	113.5	114.0	140.05	5,601.6	1,488.3	429.2	273.3	155.87	2.753	
13,068.1	6,870.0	13,447.9	7,200.0	114.8	115.3	140.05	5,669.7	1,488.2	429.2	271.5	157.70	2.722	
13,100.0	6,870.0	13,479.7	7,200.0	115.4	115.9	140.05	5,701.6	1,488.1	429.2	270.6	158.55	2.707	
13,200.0	6,870.0	13,579.7	7,200.0	117.2	117.7	140.05	5,801.6	1,487.8	429.2	267.9	161.23	2.662	

CC - Min centre to center distance or convergent point, SF - min separation factor, ES - min ellipse separation

Survey Design													Offset Site Error: 0.0 ft	
SRC Evans East Pad Sec.26-T5N-R66W - SRC Evans D-26-23-14CHZ - Wellbore #1 - Plan #1 (10-27-													Offset Well Error: 0.0 ft	
Reference		Offset		Semi Major Axis			Distance						Warning	
Measured Depth (ft)	Vertical Depth (ft)	Measured Depth (ft)	Vertical Depth (ft)	Reference (ft)	Offset (ft)	Highside Toolface (°)	Offset Wellbore Centre +N/-S (ft)	+E/-W (ft)	Between Centres (ft)	Between Ellipses (ft)	Minimum Separation (ft)	Separation Factor		
13,300.0	6,870.0	13,679.7	7,200.0	119.1	119.6	140.05	5,901.6	1,487.6	429.2	265.3	163.91	2.618		
13,400.0	6,870.0	13,779.7	7,200.0	121.0	121.5	140.05	6,001.6	1,487.4	429.2	262.6	166.59	2.576		
13,500.0	6,870.0	13,879.7	7,200.0	122.9	123.3	140.05	6,101.6	1,487.1	429.2	259.9	169.28	2.535		
13,600.0	6,870.0	13,979.7	7,200.0	124.8	125.2	140.05	6,201.6	1,486.9	429.2	257.2	171.96	2.496		
13,700.0	6,870.0	14,079.7	7,200.0	126.6	127.1	140.05	6,301.6	1,486.6	429.2	254.5	174.64	2.457		
13,768.1	6,870.0	14,147.9	7,200.0	127.9	128.4	140.05	6,369.7	1,486.5	429.2	252.7	176.47	2.432		
13,800.0	6,870.0	14,179.7	7,200.0	128.5	129.0	140.05	6,401.6	1,486.4	429.2	251.8	177.33	2.420		
13,900.0	6,870.0	14,279.7	7,200.0	130.4	130.8	140.05	6,501.6	1,486.1	429.2	249.2	180.01	2.384		
14,000.0	6,870.0	14,379.7	7,200.0	132.3	132.7	140.05	6,601.6	1,485.9	429.2	246.5	182.70	2.349		
14,100.0	6,870.0	14,479.7	7,200.0	134.2	134.6	140.05	6,701.6	1,485.6	429.2	243.8	185.39	2.315		
14,200.0	6,870.0	14,579.7	7,200.0	136.1	136.5	140.05	6,801.6	1,485.4	429.2	241.1	188.08	2.282		
14,300.0	6,870.0	14,679.7	7,200.0	137.9	138.3	140.05	6,901.6	1,485.2	429.2	238.4	190.77	2.250		
14,400.0	6,870.0	14,779.7	7,200.0	139.8	140.2	140.05	7,001.6	1,484.9	429.2	235.7	193.45	2.218		
14,500.0	6,870.0	14,879.7	7,200.0	141.7	142.1	140.05	7,101.6	1,484.7	429.2	233.0	196.14	2.188		
14,600.0	6,870.0	14,979.7	7,200.0	143.6	144.0	140.05	7,201.6	1,484.4	429.2	230.3	198.84	2.158		
14,700.0	6,870.0	15,079.7	7,200.0	145.5	145.9	140.05	7,301.6	1,484.2	429.2	227.7	201.53	2.130		
14,768.1	6,870.0	15,147.9	7,200.0	146.8	147.1	140.05	7,369.7	1,484.0	429.2	225.8	203.36	2.110		
14,800.0	6,870.0	15,179.7	7,200.0	147.4	147.7	140.05	7,401.6	1,483.9	429.2	225.0	204.22	2.102		
14,900.0	6,870.0	15,279.7	7,200.0	149.3	149.6	140.05	7,501.6	1,483.7	429.2	222.3	206.91	2.074		
15,000.0	6,870.0	15,379.7	7,200.0	151.2	151.5	140.05	7,601.6	1,483.4	429.2	219.6	209.60	2.048		
15,100.0	6,870.0	15,479.7	7,200.0	153.1	153.4	140.05	7,701.6	1,483.2	429.2	216.9	212.29	2.022		
15,200.0	6,870.0	15,579.7	7,200.0	155.0	155.3	140.05	7,801.6	1,483.0	429.2	214.2	214.99	1.996		
15,300.0	6,870.0	15,679.7	7,200.0	156.9	157.2	140.05	7,901.6	1,482.7	429.2	211.5	217.68	1.972		
15,400.0	6,870.0	15,779.7	7,200.0	158.8	159.1	140.05	8,001.6	1,482.5	429.2	208.8	220.38	1.947		
15,468.1	6,870.0	15,847.9	7,200.0	160.1	160.3	140.05	8,069.7	1,482.3	429.2	207.0	222.21	1.931		
15,500.0	6,870.0	15,879.7	7,200.0	160.7	160.9	140.05	8,101.6	1,482.2	429.2	206.1	223.07	1.924		
15,600.0	6,870.0	15,979.7	7,200.0	162.6	162.8	140.05	8,201.6	1,482.0	429.2	203.4	225.76	1.901		
15,700.0	6,870.0	16,079.7	7,200.0	164.5	164.7	140.05	8,301.6	1,481.7	429.2	200.7	228.46	1.879		
15,800.0	6,870.0	16,179.7	7,200.0	166.4	166.6	140.05	8,401.6	1,481.5	429.2	198.0	231.16	1.857		
15,900.0	6,870.0	16,279.7	7,200.0	168.3	168.5	140.05	8,501.6	1,481.2	429.2	195.3	233.85	1.835		
16,000.0	6,870.0	16,379.7	7,200.0	170.2	170.4	140.05	8,601.6	1,481.0	429.2	192.6	236.55	1.814		
16,100.0	6,870.0	16,479.7	7,200.0	172.1	172.3	140.05	8,701.6	1,480.8	429.2	189.9	239.24	1.794		
16,153.5	6,870.0	16,533.2	7,200.0	173.1	173.3	140.05	8,755.1	1,480.6	429.2	188.5	240.69	1.783		
16,200.0	6,870.0	16,579.7	7,200.0	174.0	174.2	140.05	8,801.6	1,480.5	429.2	187.2	241.94	1.774		
16,300.0	6,870.0	16,679.7	7,200.0	175.9	176.1	140.05	8,901.6	1,480.3	429.2	184.5	244.64	1.754		
16,400.0	6,870.0	16,779.7	7,200.0	177.8	178.0	140.05	9,001.6	1,480.0	429.2	181.8	247.34	1.735		
16,500.0	6,870.0	16,879.7	7,200.0	179.7	179.9	140.05	9,101.6	1,479.8	429.2	179.1	250.03	1.716		
16,600.0	6,870.0	16,979.7	7,200.0	181.6	181.8	140.05	9,201.6	1,479.5	429.2	176.4	252.73	1.698		
16,700.0	6,870.0	17,079.7	7,200.0	183.5	183.7	140.05	9,301.6	1,479.3	429.2	173.7	255.43	1.680		
16,723.9	6,870.0	17,103.7	7,200.0	183.9	184.1	140.05	9,325.5	1,479.2	429.2	173.1	256.08	1.676		
16,746.0	6,870.0	17,114.9	7,200.0	184.3	184.3	140.05	9,336.8	1,479.2	429.3	172.8	256.53	1.674 SF		

Company:	Synergy Resources	Local Co-ordinate Reference:	Well SRC Evans D-26-23-14NHZ
Project:	SEC.26-T5N-R66W	TVD Reference:	WELL @ 4768.0ft (RKB - 15')
Reference Site:	SRC Evans East Pad Sec.26-T5N-R66W	MD Reference:	WELL @ 4768.0ft (RKB - 15')
Site Error:	0.0ft	North Reference:	True
Reference Well:	SRC Evans D-26-23-14NHZ	Survey Calculation Method:	Minimum Curvature
Well Error:	0.0ft	Output errors are at	2.00 sigma
Reference Wellbore	Wellbore #1	Database:	Landmark
Reference Design:	Plan #1 (10-27-14)	Offset TVD Reference:	Offset Datum

Offset Design													Offset Site Error:	0.0 ft
Survey Program: 0-MWD													Offset Well Error:	0.0 ft
Reference		Offset		Semi Major Axis			Distance							Warning
Measured Depth (ft)	Vertical Depth (ft)	Measured Depth (ft)	Vertical Depth (ft)	Reference (ft)	Offset (ft)	Highside Toolface (°)	Offset Wellbore Centre +N/-S (ft)	+E/-W (ft)	Between Centres (ft)	Between Ellipses (ft)	Minimum Separation (ft)	Separation Factor		
0.0	0.0	0.0	0.0	0.0	0.0	-180.00	-22.6	0.0	22.6					
100.0	100.0	99.0	99.0	0.1	0.1	-180.00	-22.6	0.0	22.6	22.4	0.22	100.996		
200.0	200.0	199.0	199.0	0.3	0.3	-180.00	-22.6	0.0	22.6	21.9	0.67	33.609		
300.0	300.0	299.0	299.0	0.6	0.6	-180.00	-22.6	0.0	22.6	21.5	1.12	20.139		
400.0	400.0	399.0	399.0	0.8	0.8	-180.00	-22.6	0.0	22.6	21.0	1.57	14.377		
500.0	500.0	499.0	499.0	1.0	1.0	-180.00	-22.6	0.0	22.6	20.6	2.02	11.178		
600.0	600.0	599.0	599.0	1.2	1.2	-180.00	-22.6	0.0	22.6	20.1	2.47	9.144		
700.0	700.0	699.0	699.0	1.5	1.5	-180.00	-22.6	0.0	22.6	19.7	2.92	7.736		
800.0	800.0	799.0	799.0	1.7	1.7	-180.00	-22.6	0.0	22.6	19.2	3.37	6.704		
900.0	900.0	899.0	899.0	1.9	1.9	61.95	-22.6	0.0	21.7	17.9	3.80	5.716		
1,000.0	999.8	998.8	998.8	2.1	2.1	75.46	-22.6	0.0	19.8	15.6	4.22	4.695		
1,062.7	1,062.4	1,061.3	1,061.3	2.2	2.3	88.28	-23.0	0.5	19.2	14.8	4.48	4.297 CC, ES		
1,100.0	1,099.5	1,098.5	1,098.5	2.3	2.3	96.02	-23.6	1.3	19.4	14.8	4.63	4.197		
1,200.0	1,198.7	1,198.4	1,198.2	2.5	2.5	114.57	-26.8	5.4	21.8	16.8	5.04	4.328		
1,300.0	1,297.5	1,298.5	1,297.9	2.8	2.7	127.91	-32.1	12.3	26.3	20.8	5.47	4.801		
1,400.0	1,395.6	1,398.8	1,397.5	3.1	3.0	136.61	-39.5	21.9	31.9	26.0	5.91	5.398		
1,500.0	1,493.1	1,499.4	1,496.9	3.5	3.2	142.19	-49.1	34.4	38.3	31.9	6.39	6.001		
1,511.2	1,503.9	1,510.7	1,508.0	3.6	3.3	142.67	-50.3	35.9	39.1	32.6	6.44	6.064		
1,600.0	1,590.0	1,600.0	1,595.7	3.9	3.5	144.90	-60.8	49.5	44.1	37.2	6.92	6.373		
1,700.0	1,686.9	1,699.9	1,693.5	4.4	3.9	146.27	-72.9	65.3	49.2	41.7	7.49	6.567		
1,800.0	1,783.9	1,799.8	1,791.4	4.9	4.2	147.37	-85.1	81.1	54.3	46.2	8.08	6.724		
1,900.0	1,880.8	1,899.6	1,889.2	5.4	4.6	148.29	-97.2	96.8	59.5	50.8	8.68	6.852		
2,000.0	1,977.7	1,999.5	1,987.1	5.8	5.0	149.06	-109.4	112.6	64.6	55.3	9.29	6.958		
2,100.0	2,074.7	2,099.3	2,085.0	6.3	5.4	149.71	-121.6	128.4	69.8	59.9	9.90	7.048		
2,200.0	2,171.6	2,199.2	2,182.8	6.9	5.8	150.28	-133.7	144.2	75.0	64.4	10.52	7.124		
2,300.0	2,268.5	2,299.1	2,280.7	7.4	6.2	150.77	-145.9	159.9	80.1	69.0	11.15	7.189		
2,400.0	2,365.5	2,398.9	2,378.5	7.9	6.6	151.20	-158.1	175.7	85.3	73.5	11.78	7.245		
2,500.0	2,462.4	2,498.8	2,476.4	8.4	7.1	151.59	-170.2	191.5	90.5	78.1	12.41	7.294		
2,600.0	2,559.3	2,598.7	2,574.2	8.9	7.5	151.93	-182.4	207.3	95.7	82.6	13.04	7.338		
2,700.0	2,656.3	2,698.5	2,672.1	9.4	7.9	152.23	-194.6	223.0	100.9	87.2	13.68	7.376		
2,800.0	2,753.2	2,798.4	2,770.0	9.9	8.3	152.51	-206.7	238.8	106.1	91.8	14.31	7.410		
2,900.0	2,850.1	2,898.3	2,867.8	10.5	8.8	152.76	-218.9	254.6	111.3	96.3	14.95	7.441		
3,000.0	2,947.1	2,998.1	2,965.7	11.0	9.2	152.99	-231.0	270.4	116.5	100.9	15.59	7.469		
3,100.0	3,044.0	3,098.0	3,063.5	11.5	9.6	153.20	-243.2	286.1	121.7	105.4	16.24	7.494		
3,200.0	3,140.9	3,197.9	3,161.4	12.1	10.1	153.39	-255.4	301.9	126.9	110.0	16.88	7.516		
3,300.0	3,237.9	3,297.7	3,259.2	12.6	10.5	153.56	-267.5	317.7	132.1	114.6	17.52	7.537		
3,400.0	3,334.8	3,397.6	3,357.1	13.1	10.9	153.73	-279.7	333.5	137.3	119.1	18.17	7.556		
3,500.0	3,431.8	3,497.4	3,455.0	13.6	11.4	153.88	-291.9	349.2	142.5	123.7	18.81	7.574		
3,600.0	3,528.7	3,597.3	3,552.8	14.2	11.8	154.02	-304.0	365.0	147.7	128.2	19.46	7.590		
3,700.0	3,625.6	3,697.2	3,650.7	14.7	12.3	154.15	-316.2	380.8	152.9	132.8	20.11	7.604		
3,800.0	3,722.6	3,797.0	3,748.5	15.2	12.7	154.27	-328.3	396.6	158.1	137.4	20.76	7.618		
3,900.0	3,819.5	3,896.9	3,846.4	15.8	13.2	154.39	-340.5	412.3	163.3	141.9	21.40	7.631		
4,000.0	3,916.4	3,996.8	3,944.2	16.3	13.6	154.49	-352.7	428.1	168.5	146.5	22.05	7.643		
4,100.0	4,013.4	4,096.6	4,042.1	16.8	14.0	154.60	-364.8	443.9	173.7	151.0	22.70	7.654		
4,200.0	4,110.3	4,196.5	4,140.0	17.4	14.5	154.69	-377.0	459.7	179.0	155.6	23.35	7.665		
4,300.0	4,207.2	4,296.4	4,237.8	17.9	14.9	154.78	-389.2	475.4	184.2	160.2	24.00	7.674		
4,400.0	4,304.2	4,396.2	4,335.7	18.4	15.4	154.87	-401.3	491.2	189.4	164.7	24.65	7.683		
4,500.0	4,401.1	4,496.1	4,433.5	18.9	15.8	154.95	-413.5	507.0	194.6	169.3	25.30	7.692		
4,600.0	4,498.0	4,595.9	4,531.4	19.5	16.3	155.02	-425.7	522.8	199.8	173.9	25.95	7.700		
4,700.0	4,595.0	4,695.8	4,629.2	20.0	16.7	155.09	-437.8	538.5	205.0	178.4	26.60	7.708		
4,800.0	4,691.9	4,795.7	4,727.1	20.5	17.2	155.16	-450.0	554.3	210.2	183.0	27.25	7.715		
4,900.0	4,788.8	4,895.5	4,824.9	21.1	17.6	155.23	-462.1	570.1	215.4	187.5	27.90	7.722		

CC - Min centre to center distance or convergent point, SF - min separation factor, ES - min ellipse separation

Company:	Synergy Resources	Local Co-ordinate Reference:	Well SRC Evans D-26-23-14NHZ
Project:	SEC.26-T5N-R66W	TVD Reference:	WELL @ 4768.0ft (RKB - 15')
Reference Site:	SRC Evans East Pad Sec.26-T5N-R66W	MD Reference:	WELL @ 4768.0ft (RKB - 15')
Site Error:	0.0ft	North Reference:	True
Reference Well:	SRC Evans D-26-23-14NHZ	Survey Calculation Method:	Minimum Curvature
Well Error:	0.0ft	Output errors are at	2.00 sigma
Reference Wellbore	Wellbore #1	Database:	Landmark
Reference Design:	Plan #1 (10-27-14)	Offset TVD Reference:	Offset Datum

Offset Design												Offset Site Error:	0.0 ft
Survey Program: 0-MWD												Offset Well Error:	0.0 ft
Reference		Offset		Semi Major Axis			Distance						
Measured Depth (ft)	Vertical Depth (ft)	Measured Depth (ft)	Vertical Depth (ft)	Reference (ft)	Offset (ft)	Highside Toolface (°)	Offset Wellbore Centre +N/-S (ft)	+E/-W (ft)	Between Centres (ft)	Between Ellipses (ft)	Minimum Separation (ft)	Separation Factor	Warning
5,000.0	4,885.8	4,995.4	4,922.8	21.6	18.1	155.29	-474.3	585.9	220.7	192.1	28.55	7.729	
5,100.0	4,982.7	5,095.3	5,020.7	22.1	18.5	155.35	-486.5	601.6	225.9	196.7	29.20	7.735	
5,200.0	5,079.6	5,195.1	5,118.5	22.7	18.9	155.41	-498.6	617.4	231.1	201.2	29.85	7.741	
5,300.0	5,176.6	5,295.0	5,216.4	23.2	19.4	155.46	-510.8	633.2	236.3	205.8	30.51	7.746	
5,400.0	5,273.5	5,394.9	5,314.2	23.8	19.8	155.51	-523.0	649.0	241.5	210.4	31.16	7.752	
5,500.0	5,370.4	5,494.7	5,412.1	24.3	20.3	155.56	-535.1	664.7	246.7	214.9	31.81	7.757	
5,600.0	5,467.4	5,594.6	5,509.9	24.8	20.7	155.61	-547.3	680.5	252.0	219.5	32.46	7.762	
5,700.0	5,564.3	5,694.4	5,607.8	25.4	21.2	155.65	-559.5	696.3	257.2	224.1	33.11	7.766	
5,800.0	5,661.2	5,794.3	5,705.7	25.9	21.6	155.70	-571.6	712.1	262.4	228.6	33.77	7.771	
5,900.0	5,758.2	5,894.2	5,803.5	26.4	22.1	155.74	-583.8	727.8	267.6	233.2	34.42	7.775	
6,000.0	5,855.1	5,994.0	5,901.4	27.0	22.5	155.78	-595.9	743.6	272.8	237.7	35.07	7.779	
6,100.0	5,952.1	6,093.9	5,999.2	27.5	23.0	155.82	-608.1	759.4	278.0	242.3	35.72	7.783	
6,200.0	6,049.0	6,193.8	6,097.1	28.0	23.4	155.86	-620.3	775.2	283.2	246.9	36.38	7.787	
6,230.2	6,078.3	6,224.0	6,126.7	28.2	23.6	155.87	-623.9	779.9	284.8	248.2	36.57	7.788	
6,250.0	6,097.5	6,243.7	6,146.0	28.3	23.7	161.54	-626.4	783.1	285.8	249.1	36.69	7.790	
6,300.0	6,146.2	6,293.5	6,194.9	28.5	23.9	177.91	-632.4	790.9	288.0	250.9	37.13	7.758	
6,350.0	6,195.1	6,343.1	6,243.4	28.6	24.1	-164.73	-638.5	798.8	290.0	252.2	37.78	7.675	
6,400.0	6,243.9	6,392.1	6,291.4	28.8	24.3	-149.82	-644.4	806.5	291.7	253.1	38.62	7.555	
6,450.0	6,292.3	6,440.3	6,338.6	28.9	24.5	-139.20	-650.3	814.1	293.8	254.1	39.62	7.415	
6,500.0	6,340.1	6,487.4	6,384.9	29.0	24.7	-132.60	-656.0	821.6	296.4	255.7	40.71	7.281	
6,550.0	6,387.0	6,534.4	6,430.9	29.0	24.9	-128.98	-661.3	829.0	300.2	258.4	41.82	7.179	
6,600.0	6,432.9	6,583.0	6,478.8	29.1	25.1	-127.20	-663.9	836.7	305.2	262.4	42.75	7.139	
6,650.0	6,477.6	6,633.0	6,528.2	29.1	25.2	-126.58	-663.2	844.6	311.3	267.9	43.44	7.166	
6,700.0	6,520.7	6,684.6	6,578.9	29.1	25.3	-126.72	-658.7	852.8	318.4	274.6	43.87	7.259	
6,750.0	6,562.1	6,737.9	6,630.9	29.1	25.4	-127.35	-650.2	861.1	326.5	282.5	44.01	7.418	
6,800.0	6,601.6	6,793.1	6,683.9	29.1	25.4	-128.29	-637.4	869.6	335.3	291.4	43.87	7.642	
6,850.0	6,639.0	6,850.3	6,737.6	29.0	25.5	-129.44	-619.7	878.2	344.7	301.2	43.46	7.931	
6,900.0	6,674.1	6,909.7	6,791.7	28.9	25.5	-130.69	-596.9	886.9	354.5	311.7	42.79	8.286	
6,950.0	6,706.8	6,971.4	6,845.7	28.9	25.4	-131.98	-568.4	895.5	364.5	322.7	41.89	8.703	
7,000.0	6,736.8	7,035.6	6,899.1	28.8	25.3	-133.27	-533.9	904.0	374.6	333.8	40.81	9.179	
7,050.0	6,764.1	7,102.3	6,951.2	28.7	25.2	-134.53	-493.1	912.3	384.4	344.8	39.60	9.707	
7,100.0	6,788.5	7,171.6	7,001.1	28.6	25.1	-135.71	-445.7	920.2	393.8	355.5	38.32	10.275	
7,150.0	6,809.8	7,243.5	7,047.8	28.5	24.9	-136.80	-391.5	927.6	402.5	365.5	37.05	10.862	
7,200.0	6,828.1	7,318.0	7,090.3	28.4	24.8	-137.77	-330.8	934.3	410.4	374.5	35.88	11.437	
7,250.0	6,843.1	7,394.8	7,127.4	28.3	24.6	-138.60	-263.8	940.1	417.2	382.3	34.89	11.958	
7,300.0	6,854.9	7,473.7	7,157.9	28.2	24.4	-139.28	-191.2	944.8	422.7	388.6	34.16	12.374	
7,350.0	6,863.3	7,554.3	7,180.7	28.1	24.2	-139.79	-114.0	948.3	426.9	393.1	33.78	12.636	
7,400.0	6,868.4	7,636.2	7,194.9	28.0	24.0	-140.11	-33.4	950.4	429.5	395.7	33.80	12.706	
7,449.1	6,870.0	7,717.1	7,200.0	27.9	23.8	-140.25	47.3	951.0	430.5	396.3	34.23	12.577	
7,500.0	6,870.0	7,770.1	7,200.0	27.8	23.7	-140.25	100.3	950.9	430.5	395.7	34.80	12.371	
7,600.0	6,870.0	7,870.1	7,200.0	27.7	23.7	-140.25	200.3	950.6	430.5	394.5	35.99	11.963	
7,700.0	6,870.0	7,970.1	7,200.0	27.8	23.9	-140.25	300.3	950.4	430.5	393.2	37.33	11.533	
7,800.0	6,870.0	8,070.1	7,200.0	28.0	24.4	-140.25	400.3	950.2	430.5	391.7	38.81	11.092	
7,900.0	6,870.0	8,170.1	7,200.0	28.4	25.2	-140.25	500.3	949.9	430.5	390.1	40.42	10.650	
8,000.0	6,870.0	8,270.1	7,200.0	29.0	26.3	-140.25	600.3	949.7	430.5	388.4	42.15	10.215	
8,100.0	6,870.0	8,370.1	7,200.0	29.8	27.4	-140.25	700.3	949.4	430.5	386.6	43.97	9.792	
8,200.0	6,870.0	8,470.1	7,200.0	30.8	28.7	-140.25	800.3	949.2	430.5	384.6	45.88	9.384	
8,205.8	6,870.0	8,475.9	7,200.0	30.8	28.8	-140.25	806.1	949.2	430.5	384.5	45.99	9.361	
8,300.0	6,870.0	8,570.1	7,200.0	31.9	30.1	-140.25	900.3	948.9	430.5	382.7	47.86	8.995	
8,400.0	6,870.0	8,670.1	7,200.0	33.1	31.5	-140.25	1,000.3	948.7	430.5	380.6	49.92	8.625	
8,500.0	6,870.0	8,770.1	7,200.0	34.4	32.9	-140.25	1,100.3	948.4	430.5	378.5	52.03	8.275	
8,600.0	6,870.0	8,870.1	7,200.0	35.8	34.4	-140.25	1,200.3	948.2	430.5	376.3	54.19	7.944	

CC - Min centre to center distance or convergent point, SF - min separation factor, ES - min ellipse separation

Company:	Synergy Resources	Local Co-ordinate Reference:	Well SRC Evans D-26-23-14NHZ
Project:	SEC.26-T5N-R66W	TVD Reference:	WELL @ 4768.0ft (RKB - 15')
Reference Site:	SRC Evans East Pad Sec.26-T5N-R66W	MD Reference:	WELL @ 4768.0ft (RKB - 15')
Site Error:	0.0ft	North Reference:	True
Reference Well:	SRC Evans D-26-23-14NHZ	Survey Calculation Method:	Minimum Curvature
Well Error:	0.0ft	Output errors are at	2.00 sigma
Reference Wellbore	Wellbore #1	Database:	Landmark
Reference Design:	Plan #1 (10-27-14)	Offset TVD Reference:	Offset Datum

Offset Design												Offset Site Error:	0.0 ft
Survey Program: 0-MWDD												Offset Well Error:	0.0 ft
Reference		Offset		Semi Major Axis			Distance						Warning
Measured Depth (ft)	Vertical Depth (ft)	Measured Depth (ft)	Vertical Depth (ft)	Reference (ft)	Offset (ft)	Highside Toolface (°)	Offset Wellbore Centre +N/-S (ft)	+E/-W (ft)	Between Centres (ft)	Between Ellipses (ft)	Minimum Separation (ft)	Separation Factor	
8,700.0	6,870.0	8,970.1	7,200.0	37.2	36.0	-140.25	1,300.3	948.0	430.5	374.1	56.41	7.632	
8,800.0	6,870.0	9,070.1	7,200.0	38.7	37.5	-140.25	1,400.3	947.7	430.5	371.9	58.66	7.339	
8,900.0	6,870.0	9,170.1	7,200.0	40.2	39.1	-140.25	1,500.3	947.5	430.5	369.6	60.95	7.063	
9,000.0	6,870.0	9,270.1	7,200.0	41.8	40.8	-140.25	1,600.3	947.2	430.5	367.2	63.28	6.804	
9,100.0	6,870.0	9,370.1	7,200.0	43.4	42.4	-140.25	1,700.3	947.0	430.5	364.9	65.63	6.560	
9,200.0	6,870.0	9,470.1	7,200.0	45.0	44.1	-140.25	1,800.3	946.7	430.5	362.5	68.01	6.330	
9,300.0	6,870.0	9,570.1	7,200.0	46.6	45.8	-140.25	1,900.3	946.5	430.5	360.1	70.41	6.114	
9,400.0	6,870.0	9,670.1	7,200.0	48.3	47.5	-140.25	2,000.3	946.2	430.5	357.7	72.83	5.911	
9,500.0	6,870.0	9,770.1	7,200.0	50.0	49.2	-140.25	2,100.3	946.0	430.5	355.2	75.28	5.719	
9,600.0	6,870.0	9,870.1	7,200.0	51.7	50.9	-140.25	2,200.3	945.8	430.5	352.8	77.74	5.538	
9,700.0	6,870.0	9,970.1	7,200.0	53.4	52.7	-140.25	2,300.3	945.5	430.5	350.3	80.21	5.367	
9,706.2	6,870.0	9,976.3	7,200.0	53.5	52.8	-140.25	2,306.4	945.5	430.5	350.2	80.37	5.357	
9,800.0	6,870.0	10,070.1	7,200.0	55.1	54.4	-140.25	2,400.3	945.3	430.5	347.8	82.70	5.206	
9,900.0	6,870.0	10,170.1	7,200.0	56.8	56.2	-140.25	2,500.3	945.0	430.5	345.3	85.21	5.053	
10,000.0	6,870.0	10,270.1	7,200.0	58.6	58.0	-140.25	2,600.3	944.8	430.5	342.8	87.72	4.908	
10,100.0	6,870.0	10,370.1	7,200.0	60.3	59.7	-140.25	2,700.3	944.5	430.5	340.3	90.25	4.770	
10,200.0	6,870.0	10,470.1	7,200.0	62.1	61.5	-140.25	2,800.3	944.3	430.5	337.7	92.79	4.640	
10,300.0	6,870.0	10,570.1	7,200.0	63.9	63.3	-140.25	2,900.3	944.0	430.5	335.2	95.33	4.516	
10,400.0	6,870.0	10,670.1	7,200.0	65.6	65.1	-140.25	3,000.3	943.8	430.5	332.6	97.89	4.398	
10,500.0	6,870.0	10,770.1	7,200.0	67.4	66.9	-140.25	3,100.3	943.6	430.5	330.1	100.45	4.286	
10,600.0	6,870.0	10,870.1	7,200.0	69.2	68.8	-140.25	3,200.3	943.3	430.5	327.5	103.02	4.179	
10,700.0	6,870.0	10,970.1	7,200.0	71.0	70.6	-140.25	3,300.3	943.1	430.5	324.9	105.60	4.077	
10,800.0	6,870.0	11,070.1	7,200.0	72.8	72.4	-140.25	3,400.3	942.8	430.5	322.3	108.18	3.980	
10,900.0	6,870.0	11,170.1	7,200.0	74.6	74.2	-140.25	3,500.3	942.6	430.5	319.8	110.77	3.887	
11,000.0	6,870.0	11,270.1	7,200.0	76.5	76.1	-140.25	3,600.3	942.3	430.5	317.2	113.36	3.798	
11,100.0	6,870.0	11,370.1	7,200.0	78.3	77.9	-140.25	3,700.3	942.1	430.5	314.6	115.96	3.713	
11,200.0	6,870.0	11,470.1	7,200.0	80.1	79.8	-140.25	3,800.3	941.8	430.5	312.0	118.56	3.631	
11,215.2	6,870.0	11,485.3	7,200.0	80.4	80.0	-140.25	3,815.4	941.8	430.5	311.6	118.96	3.619	
11,300.0	6,870.0	11,570.1	7,200.0	81.9	81.6	-140.25	3,900.3	941.6	430.5	309.3	121.17	3.553	
11,400.0	6,870.0	11,670.1	7,200.0	83.8	83.4	-140.25	4,000.3	941.4	430.5	306.7	123.79	3.478	
11,500.0	6,870.0	11,770.1	7,200.0	85.6	85.3	-140.25	4,100.3	941.1	430.5	304.1	126.40	3.406	
11,600.0	6,870.0	11,870.1	7,200.0	87.4	87.2	-140.25	4,200.3	940.9	430.5	301.5	129.02	3.337	
11,658.8	6,870.0	11,929.0	7,200.0	88.5	88.2	-140.25	4,259.1	940.7	430.5	300.0	130.57	3.297	
11,700.0	6,870.0	11,970.1	7,200.0	89.3	89.0	-140.25	4,300.3	940.6	430.5	298.9	131.65	3.270	
11,800.0	6,870.0	12,070.1	7,200.0	91.1	90.9	-140.25	4,400.3	940.4	430.5	296.2	134.27	3.206	
11,900.0	6,870.0	12,170.1	7,200.0	93.0	92.7	-140.25	4,500.3	940.1	430.5	293.6	136.90	3.145	
11,958.8	6,870.0	12,229.0	7,200.0	94.1	93.8	-140.25	4,559.1	940.0	430.5	292.1	138.45	3.110	
12,000.0	6,870.0	12,270.1	7,200.0	94.8	94.6	-140.25	4,600.3	939.9	430.5	291.0	139.54	3.085	
12,100.0	6,870.0	12,370.1	7,200.0	96.7	96.5	-140.25	4,700.3	939.6	430.5	288.3	142.17	3.028	
12,163.8	6,870.0	12,433.9	7,200.0	97.9	97.7	-140.25	4,764.1	939.5	430.5	286.7	143.85	2.993	
12,200.0	6,870.0	12,470.1	7,200.0	98.6	98.3	-140.25	4,800.3	939.4	430.5	285.7	144.81	2.973	
12,300.0	6,870.0	12,570.1	7,200.0	100.4	100.2	-140.25	4,900.3	939.2	430.5	283.1	147.45	2.920	
12,358.8	6,870.0	12,629.0	7,200.0	101.5	101.3	-140.25	4,959.1	939.0	430.5	281.5	149.00	2.889	
12,400.0	6,870.0	12,670.1	7,200.0	102.3	102.1	-140.25	5,000.3	938.9	430.5	280.4	150.09	2.868	
12,500.0	6,870.0	12,770.1	7,200.0	104.1	104.0	-140.25	5,100.3	938.7	430.5	277.8	152.74	2.819	
12,600.0	6,870.0	12,870.1	7,200.0	106.0	105.8	-140.25	5,200.3	938.4	430.5	275.1	155.38	2.771	
12,700.0	6,870.0	12,970.1	7,200.0	107.9	107.7	-140.25	5,300.3	938.2	430.5	272.5	158.03	2.724	
12,707.2	6,870.0	12,977.4	7,200.0	108.0	107.8	-140.25	5,307.5	938.2	430.5	272.3	158.23	2.721	
12,800.0	6,870.0	13,070.1	7,200.0	109.7	109.6	-140.25	5,400.3	937.9	430.5	269.8	160.68	2.679	
12,863.8	6,870.0	13,133.9	7,200.0	110.9	110.8	-140.25	5,464.1	937.8	430.5	268.1	162.38	2.651	
12,900.0	6,870.0	13,170.1	7,200.0	111.6	111.5	-140.25	5,500.3	937.7	430.5	267.2	163.34	2.636	
13,000.0	6,870.0	13,270.1	7,200.0	113.5	113.4	-140.25	5,600.3	937.4	430.5	264.5	165.99	2.594	

CC - Min centre to center distance or convergent point, SF - min separation factor, ES - min ellipse separation

Company:	Synergy Resources	Local Co-ordinate Reference:	Well SRC Evans D-26-23-14NHZ
Project:	SEC.26-T5N-R66W	TVD Reference:	WELL @ 4768.0ft (RKB - 15')
Reference Site:	SRC Evans East Pad Sec.26-T5N-R66W	MD Reference:	WELL @ 4768.0ft (RKB - 15')
Site Error:	0.0ft	North Reference:	True
Reference Well:	SRC Evans D-26-23-14NHZ	Survey Calculation Method:	Minimum Curvature
Well Error:	0.0ft	Output errors are at	2.00 sigma
Reference Wellbore	Wellbore #1	Database:	Landmark
Reference Design:	Plan #1 (10-27-14)	Offset TVD Reference:	Offset Datum

Offset Design												Offset Site Error:	0.0ft
Survey Program: 0-MWD												Offset Well Error:	0.0ft
Reference		Offset		Semi Major Axis			Distance						Warning
Measured Depth (ft)	Vertical Depth (ft)	Measured Depth (ft)	Vertical Depth (ft)	Reference (ft)	Offset (ft)	Highside Toolface (°)	Offset Wellbore Centre +N/-S (ft)	+E/-W (ft)	Between Centres (ft)	Between Ellipses (ft)	Minimum Separation (ft)	Separation Factor	
13,058.8	6,870.0	13,329.0	7,200.0	114.6	114.5	-140.25	5,659.1	937.3	430.5	263.0	167.55	2.569	
13,100.0	6,870.0	13,370.1	7,200.0	115.4	115.2	-140.25	5,700.3	937.2	430.5	261.9	168.65	2.553	
13,200.0	6,870.0	13,470.1	7,200.0	117.2	117.1	-140.25	5,800.3	937.0	430.5	259.2	171.30	2.513	
13,300.0	6,870.0	13,570.1	7,200.0	119.1	119.0	-140.25	5,900.3	936.7	430.5	256.6	173.96	2.475	
13,358.8	6,870.0	13,629.0	7,200.0	120.2	120.1	-140.25	5,959.1	936.6	430.5	255.0	175.53	2.453	
13,400.0	6,870.0	13,670.1	7,200.0	121.0	120.9	-140.25	6,000.3	936.5	430.5	253.9	176.62	2.437	
13,500.0	6,870.0	13,770.1	7,200.0	122.9	122.8	-140.25	6,100.3	936.2	430.5	251.2	179.29	2.401	
13,563.8	6,870.0	13,833.9	7,200.0	124.1	124.0	-140.25	6,164.1	936.1	430.5	249.5	180.99	2.379	
13,600.0	6,870.0	13,870.1	7,200.0	124.8	124.7	-140.25	6,200.3	936.0	430.5	248.6	181.95	2.366	
13,700.0	6,870.0	13,970.1	7,200.0	126.6	126.6	-140.25	6,300.3	935.7	430.5	245.9	184.61	2.332	
13,758.8	6,870.0	14,029.0	7,200.0	127.7	127.7	-140.25	6,359.1	935.6	430.5	244.3	186.18	2.312	
13,800.0	6,870.0	14,070.1	7,200.0	128.5	128.4	-140.25	6,400.3	935.5	430.5	243.2	187.28	2.299	
13,900.0	6,870.0	14,170.1	7,200.0	130.4	130.3	-140.25	6,500.3	935.2	430.5	240.6	189.95	2.267	
14,000.0	6,870.0	14,270.1	7,200.0	132.3	132.2	-140.25	6,600.3	935.0	430.5	237.9	192.61	2.235	
14,058.8	6,870.0	14,329.0	7,200.0	133.4	133.3	-140.25	6,659.1	934.9	430.5	236.3	194.18	2.217	
14,100.0	6,870.0	14,370.1	7,200.0	134.2	134.1	-140.25	6,700.3	934.8	430.5	235.2	195.28	2.205	
14,200.0	6,870.0	14,470.1	7,200.0	136.1	136.0	-140.25	6,800.3	934.5	430.5	232.6	197.95	2.175	
14,209.6	6,870.0	14,479.7	7,200.0	136.2	136.2	-140.25	6,809.8	934.5	430.5	232.3	198.21	2.172	
14,300.0	6,870.0	14,570.1	7,200.0	137.9	137.9	-140.25	6,900.3	934.3	430.5	229.9	200.62	2.146	
14,400.0	6,870.0	14,670.1	7,200.0	139.8	139.8	-140.25	7,000.3	934.0	430.5	227.2	203.29	2.118	
14,500.0	6,870.0	14,770.1	7,200.0	141.7	141.7	-140.25	7,100.3	933.8	430.5	224.6	205.97	2.090	
14,600.0	6,870.0	14,870.1	7,200.0	143.6	143.6	-140.25	7,200.3	933.5	430.5	221.9	208.64	2.063	
14,700.0	6,870.0	14,970.1	7,200.0	145.5	145.5	-140.25	7,300.3	933.3	430.5	219.2	211.31	2.037	
14,758.8	6,870.0	15,029.0	7,200.0	146.6	146.6	-140.25	7,359.1	933.1	430.5	217.6	212.89	2.022	
14,800.0	6,870.0	15,070.1	7,200.0	147.4	147.4	-140.25	7,400.3	933.0	430.5	216.5	213.99	2.012	
14,900.0	6,870.0	15,170.1	7,200.0	149.3	149.3	-140.25	7,500.3	932.8	430.5	213.9	216.67	1.987	
14,963.8	6,870.0	15,233.9	7,200.0	150.5	150.5	-140.25	7,564.1	932.6	430.5	212.1	218.37	1.971	
15,000.0	6,870.0	15,270.1	7,200.0	151.2	151.2	-140.25	7,600.3	932.6	430.5	211.2	219.34	1.963	
15,100.0	6,870.0	15,370.1	7,200.0	153.1	153.1	-140.25	7,700.3	932.3	430.5	208.5	222.02	1.939	
15,200.0	6,870.0	15,470.1	7,200.0	155.0	155.0	-140.25	7,800.3	932.1	430.5	205.8	224.70	1.916	
15,263.8	6,870.0	15,533.9	7,200.0	156.2	156.2	-140.25	7,864.1	931.9	430.5	204.1	226.41	1.902	
15,300.0	6,870.0	15,570.1	7,200.0	156.9	156.9	-140.25	7,900.3	931.8	430.5	203.1	227.38	1.893	
15,400.0	6,870.0	15,670.1	7,200.0	158.8	158.8	-140.25	8,000.3	931.6	430.5	200.5	230.05	1.871	
15,458.8	6,870.0	15,729.0	7,200.0	159.9	159.9	-140.25	8,059.1	931.4	430.5	198.9	231.63	1.859	
15,500.0	6,870.0	15,770.1	7,200.0	160.7	160.7	-140.25	8,100.3	931.3	430.5	197.8	232.73	1.850	
15,600.0	6,870.0	15,870.1	7,200.0	162.6	162.6	-140.25	8,200.3	931.1	430.5	195.1	235.41	1.829	
15,700.0	6,870.0	15,970.1	7,200.0	164.5	164.5	-140.25	8,300.3	930.8	430.5	192.4	238.09	1.808	
15,800.0	6,870.0	16,070.1	7,200.0	166.4	166.4	-140.25	8,400.3	930.6	430.5	189.7	240.78	1.788	
15,900.0	6,870.0	16,170.1	7,200.0	168.3	168.3	-140.25	8,500.3	930.4	430.5	187.1	243.46	1.768	
16,000.0	6,870.0	16,270.1	7,200.0	170.2	170.2	-140.25	8,600.3	930.1	430.5	184.4	246.14	1.749	
16,100.0	6,870.0	16,370.1	7,200.0	172.1	172.1	-140.25	8,700.3	929.9	430.5	181.7	248.82	1.730	
16,200.0	6,870.0	16,470.1	7,200.0	174.0	174.0	-140.25	8,800.3	929.6	430.5	179.0	251.51	1.712	
16,300.0	6,870.0	16,570.1	7,200.0	175.9	175.9	-140.25	8,900.3	929.4	430.5	176.3	254.19	1.694	
16,400.0	6,870.0	16,670.1	7,200.0	177.8	177.8	-140.25	9,000.2	929.1	430.5	173.6	256.88	1.676	
16,500.0	6,870.0	16,770.1	7,200.0	179.7	179.7	-140.25	9,100.2	928.9	430.5	171.0	259.56	1.659	
16,600.0	6,870.0	16,870.1	7,200.0	181.6	181.6	-140.25	9,200.2	928.6	430.5	168.3	262.25	1.642	
16,700.0	6,870.0	16,970.1	7,200.0	183.5	183.5	-140.25	9,300.2	928.4	430.5	165.6	264.93	1.625	
16,746.0	6,870.0	17,016.1	7,200.0	184.3	184.4	-140.25	9,346.3	928.3	430.5	164.4	266.17	1.617 SF	

SRC Evans East Pad Sec.26-T5N-R66W - SRC Evans S-26-23-14NHZ - Wellbore #1 - Plan #1 (10-27-												Offset Site Error:	0.0 ft	
Survey Program: 0-MWD												Offset Well Error:	0.0 ft	
Reference		Offset		Semi Major Axis			Distance						Warning	
Measured Depth (ft)	Vertical Depth (ft)	Measured Depth (ft)	Vertical Depth (ft)	Reference (ft)	Offset (ft)	Highside Toolface (°)	Offset Wellbore Centre +N/-S (ft)	+E/-W (ft)	Between Centres (ft)	Between Ellipses (ft)	Minimum Separation (ft)	Separation Factor		
0.0	0.0	0.0	0.0	0.0	0.0	180.00	-44.8	0.0	44.9					
100.0	100.0	98.0	98.0	0.1	0.1	180.00	-44.8	0.0	44.8	44.6	0.22	201.374		
200.0	200.0	198.0	198.0	0.3	0.3	180.00	-44.8	0.0	44.8	44.1	0.67	66.901		
300.0	300.0	298.0	298.0	0.6	0.6	180.00	-44.8	0.0	44.8	43.7	1.12	40.033		
400.0	400.0	398.0	398.0	0.8	0.8	180.00	-44.8	0.0	44.8	43.2	1.57	28.562		
500.0	500.0	498.0	498.0	1.0	1.0	180.00	-44.8	0.0	44.8	42.8	2.02	22.201		
600.0	600.0	598.0	598.0	1.2	1.2	180.00	-44.8	0.0	44.8	42.3	2.47	18.157		
700.0	700.0	698.0	698.0	1.5	1.5	180.00	-44.8	0.0	44.8	41.9	2.92	15.359		
800.0	800.0	798.0	798.0	1.7	1.7	180.00	-44.8	0.0	44.8	41.4	3.37	13.309		
900.0	900.0	898.0	898.0	1.9	1.9	59.97	-44.8	0.0	43.9	40.1	3.80	11.567		
1,000.0	999.8	997.8	997.8	2.1	2.1	66.27	-44.8	0.0	41.5	37.3	4.21	9.857		
1,100.0	1,099.5	1,097.5	1,097.5	2.3	2.4	78.13	-44.8	0.0	38.9	34.2	4.65	8.354		
1,169.0	1,168.0	1,166.0	1,166.0	2.5	2.5	90.00	-44.8	0.0	38.0	33.0	4.97	7.649	CC, ES	
1,200.0	1,198.7	1,196.7	1,196.7	2.5	2.6	96.17	-44.8	0.0	38.2	33.1	5.11	7.479		
1,300.0	1,297.5	1,295.7	1,295.7	2.8	2.8	115.12	-46.0	1.1	42.5	37.0	5.56	7.649		
1,400.0	1,395.6	1,395.2	1,395.1	3.1	3.0	128.91	-49.6	4.6	51.3	45.3	5.98	8.573		
1,500.0	1,493.1	1,495.2	1,494.6	3.5	3.2	137.80	-55.9	10.4	62.8	56.4	6.41	9.793		
1,511.2	1,503.9	1,506.3	1,505.7	3.6	3.2	138.55	-56.7	11.2	64.2	57.7	6.46	9.934		
1,600.0	1,590.0	1,595.7	1,594.4	3.9	3.4	142.85	-64.6	18.7	74.8	68.0	6.89	10.869		
1,700.0	1,686.9	1,696.9	1,694.4	4.4	3.6	144.73	-76.1	29.5	85.0	77.6	7.41	11.465		
1,800.0	1,783.9	1,796.9	1,792.8	4.9	3.9	145.10	-89.0	41.8	93.7	85.7	7.99	11.721		
1,900.0	1,880.8	1,896.6	1,890.8	5.4	4.2	145.37	-102.0	54.1	102.3	93.7	8.60	11.902		
2,000.0	1,977.7	1,996.2	1,988.9	5.8	4.5	145.61	-115.0	66.3	110.9	101.7	9.22	12.035		
2,100.0	2,074.7	2,095.8	2,086.9	6.3	4.9	145.81	-128.0	78.6	119.6	109.7	9.85	12.134		
2,200.0	2,171.6	2,195.4	2,184.9	6.9	5.2	145.98	-141.0	90.9	128.2	117.7	10.50	12.206		
2,300.0	2,268.5	2,295.1	2,282.9	7.4	5.6	146.13	-154.0	103.1	136.8	125.7	11.16	12.259		
2,400.0	2,365.5	2,394.7	2,380.9	7.9	5.9	146.26	-166.9	115.4	145.5	133.6	11.83	12.297		
2,500.0	2,462.4	2,494.3	2,478.9	8.4	6.3	146.38	-179.9	127.7	154.1	141.6	12.50	12.325		
2,600.0	2,559.3	2,593.9	2,576.9	8.9	6.7	146.48	-192.9	140.0	162.7	149.5	13.18	12.345		
2,700.0	2,656.3	2,693.6	2,674.9	9.4	7.1	146.58	-205.9	152.2	171.4	157.5	13.87	12.358		
2,800.0	2,753.2	2,793.2	2,773.0	9.9	7.5	146.66	-218.9	164.5	180.0	165.4	14.56	12.366		
2,900.0	2,850.1	2,892.8	2,871.0	10.5	7.8	146.74	-231.8	176.8	188.6	173.4	15.25	12.371		
3,000.0	2,947.1	2,992.4	2,969.0	11.0	8.2	146.81	-244.8	189.0	197.3	181.3	15.94	12.373		
3,100.0	3,044.0	3,092.1	3,067.0	11.5	8.6	146.88	-257.8	201.3	205.9	189.3	16.64	12.373		
3,200.0	3,140.9	3,191.7	3,165.0	12.1	9.0	146.94	-270.8	213.6	214.5	197.2	17.34	12.371		
3,300.0	3,237.9	3,291.3	3,263.0	12.6	9.4	146.99	-283.8	225.8	223.2	205.1	18.05	12.368		
3,400.0	3,334.8	3,391.0	3,361.0	13.1	9.8	147.04	-296.8	238.1	231.8	213.1	18.75	12.364		
3,500.0	3,431.8	3,490.6	3,459.0	13.6	10.2	147.09	-309.7	250.4	240.5	221.0	19.46	12.359		
3,600.0	3,528.7	3,590.2	3,557.0	14.2	10.6	147.13	-322.7	262.7	249.1	228.9	20.16	12.353		
3,700.0	3,625.6	3,689.8	3,655.1	14.7	11.0	147.17	-335.7	274.9	257.7	236.9	20.87	12.347		
3,800.0	3,722.6	3,789.5	3,753.1	15.2	11.4	147.21	-348.7	287.2	266.4	244.8	21.58	12.341		
3,900.0	3,819.5	3,889.1	3,851.1	15.8	11.8	147.25	-361.7	299.5	275.0	252.7	22.30	12.335		
4,000.0	3,916.4	3,988.7	3,949.1	16.3	12.2	147.28	-374.7	311.7	283.7	260.6	23.01	12.328		
4,100.0	4,013.4	4,088.3	4,047.1	16.8	12.6	147.31	-387.6	324.0	292.3	268.6	23.72	12.322		
4,200.0	4,110.3	4,188.0	4,145.1	17.4	13.0	147.34	-400.6	336.3	300.9	276.5	24.44	12.315		
4,300.0	4,207.2	4,287.6	4,243.1	17.9	13.4	147.37	-413.6	348.5	309.6	284.4	25.15	12.308		
4,400.0	4,304.2	4,387.2	4,341.1	18.4	13.9	147.40	-426.6	360.8	318.2	292.3	25.87	12.302		
4,500.0	4,401.1	4,486.8	4,439.1	18.9	14.3	147.43	-439.6	373.1	326.8	300.3	26.58	12.295		
4,600.0	4,498.0	4,586.5	4,537.2	19.5	14.7	147.45	-452.5	385.4	335.5	308.2	27.30	12.289		
4,700.0	4,595.0	4,686.1	4,635.2	20.0	15.1	147.47	-465.5	397.6	344.1	316.1	28.02	12.283		
4,800.0	4,691.9	4,785.7	4,733.2	20.5	15.5	147.49	-478.5	409.9	352.8	324.0	28.73	12.277		
4,900.0	4,788.8	4,885.3	4,831.2	21.1	15.9	147.51	-491.5	422.2	361.4	332.0	29.45	12.270		

Company:	Synergy Resources	Local Co-ordinate Reference:	Well SRC Evans D-26-23-14NHZ
Project:	SEC.26-T5N-R66W	TVD Reference:	WELL @ 4768.0ft (RKB - 15')
Reference Site:	SRC Evans East Pad Sec.26-T5N-R66W	MD Reference:	WELL @ 4768.0ft (RKB - 15')
Site Error:	0.0ft	North Reference:	True
Reference Well:	SRC Evans D-26-23-14NHZ	Survey Calculation Method:	Minimum Curvature
Well Error:	0.0ft	Output errors are at	2.00 sigma
Reference Wellbore	Wellbore #1	Database:	Landmark
Reference Design:	Plan #1 (10-27-14)	Offset TVD Reference:	Offset Datum

Offset Design												Offset Site Error:	0.0 ft
Survey Program: 0-MWD												Offset Well Error:	0.0 ft
Reference		Offset		Semi Major Axis			Distance						Warning
Measured Depth (ft)	Vertical Depth (ft)	Measured Depth (ft)	Vertical Depth (ft)	Reference (ft)	Offset (ft)	Highside Toolface (°)	Offset Wellbore Centre +N/-S (ft)	+E/-W (ft)	Between Centres (ft)	Between Ellipses (ft)	Minimum Separation (ft)	Separation Factor	
5,000.0	4,885.8	4,985.0	4,929.2	21.6	16.3	147.53	-504.5	434.4	370.0	339.9	30.17	12.265	
5,100.0	4,982.7	5,084.6	5,027.2	22.1	16.7	147.55	-517.5	446.7	378.7	347.8	30.89	12.259	
5,200.0	5,079.6	5,184.2	5,125.2	22.7	17.1	147.57	-530.4	459.0	387.3	355.7	31.61	12.253	
5,300.0	5,176.6	5,283.8	5,223.2	23.2	17.5	147.59	-543.4	471.2	396.0	363.6	32.33	12.247	
5,400.0	5,273.5	5,383.5	5,321.3	23.8	17.9	147.60	-556.4	483.5	404.6	371.6	33.05	12.242	
5,500.0	5,370.4	5,483.1	5,419.3	24.3	18.4	147.62	-569.4	495.8	413.2	379.5	33.77	12.237	
5,600.0	5,467.4	5,582.7	5,517.3	24.8	18.8	147.64	-582.4	508.1	421.9	387.4	34.49	12.231	
5,700.0	5,564.3	5,682.3	5,615.3	25.4	19.2	147.65	-595.4	520.3	430.5	395.3	35.21	12.226	
5,800.0	5,661.2	5,782.0	5,713.3	25.9	19.6	147.66	-608.3	532.6	439.2	403.2	35.93	12.221	
5,900.0	5,758.2	5,881.6	5,811.3	26.4	20.0	147.68	-621.3	544.9	447.8	411.1	36.65	12.217	
6,000.0	5,855.1	5,981.2	5,909.3	27.0	20.4	147.69	-634.3	557.1	456.4	419.1	37.38	12.212	
6,100.0	5,952.1	6,080.9	6,007.3	27.5	20.8	147.70	-647.3	569.4	465.1	427.0	38.10	12.207	
6,200.0	6,049.0	6,180.6	6,105.6	28.0	21.2	147.85	-659.2	581.7	473.7	435.0	38.74	12.229	
6,230.2	6,078.3	6,210.6	6,135.3	28.2	21.3	148.13	-660.8	585.4	476.3	437.5	38.82	12.269	
6,250.0	6,097.5	6,230.2	6,154.7	28.3	21.3	154.13	-661.2	587.8	478.0	439.2	38.80	12.320	
6,300.0	6,146.2	6,279.4	6,203.6	28.5	21.4	171.84	-659.8	593.9	482.4	443.7	38.70	12.467	
6,350.0	6,195.1	6,328.3	6,251.8	28.6	21.5	-168.80	-655.1	600.0	486.9	448.3	38.54	12.632	
6,400.0	6,243.9	6,376.9	6,299.4	28.8	21.5	-151.25	-647.1	605.9	491.4	453.0	38.35	12.812	
6,450.0	6,292.3	6,425.2	6,346.1	28.9	21.5	-137.47	-636.0	611.7	495.9	457.7	38.13	13.005	
6,500.0	6,340.1	6,473.3	6,391.6	29.0	21.5	-127.26	-621.8	617.3	500.3	462.4	37.89	13.205	
6,550.0	6,387.0	6,521.1	6,435.9	29.0	21.5	-119.72	-604.7	622.8	504.7	467.1	37.63	13.412	
6,600.0	6,432.9	6,568.6	6,478.7	29.1	21.4	-114.02	-584.7	628.1	509.1	471.7	37.38	13.620	
6,650.0	6,477.6	6,615.9	6,519.9	29.1	21.4	-109.59	-562.1	633.2	513.3	476.2	37.12	13.827	
6,700.0	6,520.7	6,663.0	6,559.4	29.1	21.3	-106.07	-536.9	638.1	517.4	480.5	36.88	14.029	
6,750.0	6,562.1	6,709.9	6,597.0	29.1	21.2	-103.20	-509.2	642.7	521.4	484.7	36.66	14.223	
6,800.0	6,601.6	6,756.7	6,632.5	29.1	21.1	-100.83	-479.2	647.1	525.2	488.7	36.46	14.404	
6,850.0	6,639.0	6,803.2	6,666.0	29.0	21.0	-98.85	-447.1	651.2	528.8	492.5	36.30	14.569	
6,900.0	6,674.1	6,850.0	6,697.4	28.9	20.9	-97.17	-412.7	655.0	532.2	496.0	36.17	14.715	
6,950.0	6,706.8	6,895.9	6,726.1	28.9	20.7	-95.75	-377.0	658.5	535.3	499.2	36.08	14.837	
7,000.0	6,736.8	6,942.1	6,752.5	28.8	20.6	-94.53	-339.3	661.7	538.2	502.2	36.04	14.932	
7,050.0	6,764.1	6,988.2	6,776.4	28.7	20.5	-93.51	-300.0	664.6	540.9	504.8	36.06	14.998	
7,100.0	6,788.5	7,034.1	6,797.8	28.6	20.3	-92.65	-259.4	667.2	543.2	507.1	36.13	15.033	
7,150.0	6,809.8	7,080.0	6,816.5	28.5	20.2	-91.93	-217.5	669.4	545.3	509.0	36.27	15.035	
7,200.0	6,828.1	7,125.9	6,832.4	28.4	20.1	-91.35	-174.6	671.3	547.0	510.6	36.46	15.003	
7,250.0	6,843.1	7,171.7	6,845.6	28.3	19.9	-90.89	-130.8	672.8	548.4	511.7	36.72	14.937	
7,300.0	6,854.9	7,217.4	6,856.0	28.2	19.8	-90.56	-86.2	674.0	549.6	512.5	37.04	14.838	
7,350.0	6,863.3	7,263.2	6,863.5	28.1	19.7	-90.33	-41.1	674.8	550.3	512.9	37.42	14.707	
7,400.0	6,868.4	7,308.9	6,868.2	28.0	19.5	-90.21	4.4	675.3	550.8	512.9	37.86	14.547	
7,449.1	6,870.0	7,353.8	6,870.0	27.9	19.4	-90.21	49.2	675.4	550.9	512.5	38.35	14.364	
7,468.5	6,870.0	7,372.8	6,870.0	27.8	19.4	-90.21	68.1	675.4	550.9	512.3	38.55	14.291	
7,500.0	6,870.0	7,404.2	6,870.0	27.8	19.3	-90.21	99.6	675.3	550.9	512.0	38.87	14.171	
7,600.0	6,870.0	7,504.2	6,870.0	27.7	19.6	-90.21	199.6	675.0	550.9	510.8	40.10	13.738	
7,700.0	6,870.0	7,604.2	6,870.0	27.8	20.6	-90.21	299.6	674.8	550.9	509.2	41.64	13.228	
7,800.0	6,870.0	7,704.2	6,870.0	28.0	21.7	-90.21	399.6	674.6	550.9	507.4	43.48	12.671	
7,900.0	6,870.0	7,804.2	6,870.0	28.4	22.9	-90.21	499.6	674.3	550.9	505.3	45.56	12.092	
8,000.0	6,870.0	7,904.2	6,870.0	29.0	24.2	-90.21	599.6	674.1	550.9	503.0	47.86	11.511	
8,100.0	6,870.0	8,004.2	6,870.0	29.8	25.5	-90.21	699.6	673.8	550.9	500.5	50.34	10.943	
8,200.0	6,870.0	8,104.2	6,870.0	30.8	26.9	-90.21	799.6	673.6	550.9	497.9	52.99	10.396	
8,300.0	6,870.0	8,204.2	6,870.0	31.9	28.4	-90.21	899.6	673.3	550.9	495.1	55.78	9.876	
8,400.0	6,870.0	8,304.2	6,870.0	33.1	29.9	-90.21	999.6	673.1	550.9	492.2	58.69	9.387	
8,500.0	6,870.0	8,404.2	6,870.0	34.4	31.5	-90.21	1,099.6	672.8	550.9	489.2	61.70	8.929	
8,600.0	6,870.0	8,504.2	6,870.0	35.8	33.0	-90.21	1,199.6	672.6	550.9	486.1	64.79	8.502	

CC - Min centre to center distance or convergent point, SF - min separation factor, ES - min ellipse separation

Company:	Synergy Resources	Local Co-ordinate Reference:	Well SRC Evans D-26-23-14NHZ
Project:	SEC.26-T5N-R66W	TVD Reference:	WELL @ 4768.0ft (RKB - 15')
Reference Site:	SRC Evans East Pad Sec.26-T5N-R66W	MD Reference:	WELL @ 4768.0ft (RKB - 15')
Site Error:	0.0ft	North Reference:	True
Reference Well:	SRC Evans D-26-23-14NHZ	Survey Calculation Method:	Minimum Curvature
Well Error:	0.0ft	Output errors are at	2.00 sigma
Reference Wellbore	Wellbore #1	Database:	Landmark
Reference Design:	Plan #1 (10-27-14)	Offset TVD Reference:	Offset Datum

Offset Design												Offset Site Error:	0.0 ft
Survey Program: 0-MWDD												Offset Well Error:	0.0 ft
Reference		Offset		Semi Major Axis			Distance						Warning
Measured Depth (ft)	Vertical Depth (ft)	Measured Depth (ft)	Vertical Depth (ft)	Reference (ft)	Offset (ft)	Highside Toolface (°)	Offset Wellbore Centre +N/-S (ft)	+E/-W (ft)	Between Centres (ft)	Between Ellipses (ft)	Minimum Separation (ft)	Separation Factor	
8,700.0	6,870.0	8,604.2	6,870.0	37.2	34.7	-90.21	1,299.6	672.4	550.9	482.9	67.97	8.105	
8,800.0	6,870.0	8,704.2	6,870.0	38.7	36.3	-90.21	1,399.6	672.1	550.9	479.7	71.21	7.736	
8,900.0	6,870.0	8,804.2	6,870.0	40.2	38.0	-90.21	1,499.6	671.9	550.9	476.4	74.50	7.394	
9,000.0	6,870.0	8,904.2	6,870.0	41.8	39.6	-90.21	1,599.6	671.6	550.9	473.0	77.85	7.076	
9,100.0	6,870.0	9,004.2	6,870.0	43.4	41.3	-90.21	1,699.6	671.4	550.9	469.6	81.24	6.781	
9,200.0	6,870.0	9,104.2	6,870.0	45.0	43.1	-90.21	1,799.6	671.1	550.9	466.2	84.67	6.506	
9,300.0	6,870.0	9,204.2	6,870.0	46.6	44.8	-90.21	1,899.6	670.9	550.9	462.8	88.14	6.251	
9,400.0	6,870.0	9,304.2	6,870.0	48.3	46.6	-90.21	1,999.6	670.6	550.9	459.3	91.63	6.012	
9,500.0	6,870.0	9,404.2	6,870.0	50.0	48.3	-90.21	2,099.6	670.4	550.9	455.7	95.15	5.790	
9,600.0	6,870.0	9,504.2	6,870.0	51.7	50.1	-90.21	2,199.6	670.2	550.9	452.2	98.69	5.582	
9,700.0	6,870.0	9,604.2	6,870.0	53.4	51.9	-90.21	2,299.6	669.9	550.9	448.6	102.26	5.387	
9,800.0	6,870.0	9,704.2	6,870.0	55.1	53.7	-90.21	2,399.6	669.7	550.9	445.0	105.85	5.205	
9,900.0	6,870.0	9,804.2	6,870.0	56.8	55.5	-90.21	2,499.6	669.4	550.9	441.4	109.45	5.033	
10,000.0	6,870.0	9,904.2	6,870.0	58.6	57.3	-90.21	2,599.6	669.2	550.9	437.8	113.07	4.872	
10,100.0	6,870.0	10,004.2	6,870.0	60.3	59.1	-90.21	2,699.6	668.9	550.9	434.2	116.70	4.721	
10,200.0	6,870.0	10,104.2	6,870.0	62.1	60.9	-90.21	2,799.6	668.7	550.9	430.5	120.35	4.578	
10,300.0	6,870.0	10,204.2	6,870.0	63.9	62.7	-90.21	2,899.6	668.4	550.9	426.9	124.00	4.442	
10,400.0	6,870.0	10,304.2	6,870.0	65.6	64.6	-90.21	2,999.6	668.2	550.9	423.2	127.67	4.315	
10,500.0	6,870.0	10,404.2	6,870.0	67.4	66.4	-90.21	3,099.6	668.0	550.9	419.5	131.35	4.194	
10,600.0	6,870.0	10,504.2	6,870.0	69.2	68.2	-90.21	3,199.6	667.7	550.9	415.8	135.04	4.079	
10,700.0	6,870.0	10,604.2	6,870.0	71.0	70.1	-90.21	3,299.6	667.5	550.9	412.2	138.74	3.971	
10,800.0	6,870.0	10,704.2	6,870.0	72.8	71.9	-90.21	3,399.6	667.2	550.9	408.4	142.44	3.868	
10,900.0	6,870.0	10,804.2	6,870.0	74.6	73.8	-90.21	3,499.6	667.0	550.9	404.7	146.15	3.769	
11,000.0	6,870.0	10,904.2	6,870.0	76.5	75.6	-90.21	3,599.6	666.7	550.9	401.0	149.87	3.676	
11,100.0	6,870.0	11,004.2	6,870.0	78.3	77.5	-90.21	3,699.6	666.5	550.9	397.3	153.59	3.587	
11,200.0	6,870.0	11,104.2	6,870.0	80.1	79.4	-90.21	3,799.6	666.3	550.9	393.6	157.32	3.502	
11,300.0	6,870.0	11,204.2	6,870.0	81.9	81.2	-90.21	3,899.6	666.0	550.9	389.8	161.06	3.420	
11,400.0	6,870.0	11,304.2	6,870.0	83.8	83.1	-90.21	3,999.6	665.8	550.9	386.1	164.80	3.343	
11,500.0	6,870.0	11,404.2	6,870.0	85.6	85.0	-90.21	4,099.6	665.5	550.9	382.3	168.54	3.269	
11,600.0	6,870.0	11,504.2	6,870.0	87.4	86.8	-90.21	4,199.6	665.3	550.9	378.6	172.29	3.197	
11,700.0	6,870.0	11,604.2	6,870.0	89.3	88.7	-90.21	4,299.6	665.0	550.9	374.8	176.05	3.129	
11,800.0	6,870.0	11,704.2	6,870.0	91.1	90.6	-90.21	4,399.6	664.8	550.9	371.1	179.80	3.064	
11,900.0	6,870.0	11,804.2	6,870.0	93.0	92.5	-90.21	4,499.6	664.5	550.9	367.3	183.56	3.001	
12,000.0	6,870.0	11,904.2	6,870.0	94.8	94.3	-90.21	4,599.6	664.3	550.9	363.6	187.33	2.941	
12,100.0	6,870.0	12,004.2	6,870.0	96.7	96.2	-90.21	4,699.6	664.1	550.9	359.8	191.09	2.883	
12,200.0	6,870.0	12,104.2	6,870.0	98.6	98.1	-90.21	4,799.6	663.8	550.9	356.0	194.86	2.827	
12,300.0	6,870.0	12,204.2	6,870.0	100.4	100.0	-90.21	4,899.6	663.6	550.9	352.3	198.64	2.773	
12,400.0	6,870.0	12,304.2	6,870.0	102.3	101.9	-90.21	4,999.6	663.3	550.9	348.5	202.41	2.722	
12,500.0	6,870.0	12,404.2	6,870.0	104.1	103.8	-90.21	5,099.6	663.1	550.9	344.7	206.19	2.672	
12,600.0	6,870.0	12,504.2	6,870.0	106.0	105.6	-90.21	5,199.6	662.8	550.9	340.9	209.97	2.624	
12,700.0	6,870.0	12,604.2	6,870.0	107.9	107.5	-90.21	5,299.6	662.6	550.9	337.1	213.75	2.577	
12,800.0	6,870.0	12,704.2	6,870.0	109.7	109.4	-90.21	5,399.6	662.3	550.9	333.4	217.54	2.532	
12,900.0	6,870.0	12,804.2	6,870.0	111.6	111.3	-90.21	5,499.6	662.1	550.9	329.6	221.32	2.489	
13,000.0	6,870.0	12,904.2	6,870.0	113.5	113.2	-90.21	5,599.6	661.9	550.9	325.8	225.11	2.447	
13,100.0	6,870.0	13,004.2	6,870.0	115.4	115.1	-90.21	5,699.6	661.6	550.9	322.0	228.90	2.407	
13,200.0	6,870.0	13,104.2	6,870.0	117.2	117.0	-90.21	5,799.6	661.4	550.9	318.2	232.69	2.367	
13,300.0	6,870.0	13,204.2	6,870.0	119.1	118.9	-90.21	5,899.6	661.1	550.9	314.4	236.49	2.329	
13,400.0	6,870.0	13,304.2	6,870.0	121.0	120.8	-90.21	5,999.6	660.9	550.9	310.6	240.28	2.293	
13,500.0	6,870.0	13,404.2	6,870.0	122.9	122.7	-90.21	6,099.6	660.6	550.9	306.8	244.08	2.257	
13,600.0	6,870.0	13,504.2	6,870.0	124.8	124.6	-90.21	6,199.6	660.4	550.9	303.0	247.88	2.222	
13,700.0	6,870.0	13,604.2	6,870.0	126.6	126.5	-90.21	6,299.6	660.1	550.9	299.2	251.68	2.189	
13,800.0	6,870.0	13,704.2	6,870.0	128.5	128.4	-90.21	6,399.6	659.9	550.9	295.4	255.48	2.156	

CC - Min centre to center distance or convergent point, SF - min separation factor, ES - min ellipse separation

Company:	Synergy Resources	Local Co-ordinate Reference:	Well SRC Evans D-26-23-14NHZ
Project:	SEC.26-T5N-R66W	TVD Reference:	WELL @ 4768.0ft (RKB - 15')
Reference Site:	SRC Evans East Pad Sec.26-T5N-R66W	MD Reference:	WELL @ 4768.0ft (RKB - 15')
Site Error:	0.0ft	North Reference:	True
Reference Well:	SRC Evans D-26-23-14NHZ	Survey Calculation Method:	Minimum Curvature
Well Error:	0.0ft	Output errors are at	2.00 sigma
Reference Wellbore	Wellbore #1	Database:	Landmark
Reference Design:	Plan #1 (10-27-14)	Offset TVD Reference:	Offset Datum

Offset Design												Offset Site Error:	0.0 ft
Survey Program: 0-MWD												Offset Well Error:	0.0 ft
Reference		Offset		Semi Major Axis			Distance						Warning
Measured Depth (ft)	Vertical Depth (ft)	Measured Depth (ft)	Vertical Depth (ft)	Reference (ft)	Offset (ft)	Highside Toolface (°)	Offset Wellbore Centre +N/-S (ft)	+E/-W (ft)	Between Centres (ft)	Between Ellipses (ft)	Minimum Separation (ft)	Separation Factor	
13,900.0	6,870.0	13,804.2	6,870.0	130.4	130.3	-90.21	6,499.6	659.7	550.9	291.6	259.28	2.125	
14,000.0	6,870.0	13,904.2	6,870.0	132.3	132.2	-90.21	6,599.6	659.4	550.9	287.8	263.08	2.094	
14,100.0	6,870.0	14,004.2	6,870.0	134.2	134.1	-90.21	6,699.6	659.2	550.9	284.0	266.89	2.064	
14,200.0	6,870.0	14,104.2	6,870.0	136.1	136.0	-90.21	6,799.6	658.9	550.9	280.2	270.69	2.035	
14,300.0	6,870.0	14,204.2	6,870.0	137.9	137.9	-90.21	6,899.6	658.7	550.9	276.4	274.50	2.007	
14,400.0	6,870.0	14,304.2	6,870.0	139.8	139.8	-90.21	6,999.6	658.4	550.9	272.6	278.31	1.979	
14,500.0	6,870.0	14,404.2	6,870.0	141.7	141.7	-90.21	7,099.6	658.2	550.9	268.8	282.11	1.953	
14,600.0	6,870.0	14,504.2	6,870.0	143.6	143.6	-90.21	7,199.6	657.9	550.9	265.0	285.92	1.927	
14,700.0	6,870.0	14,604.2	6,870.0	145.5	145.5	-90.21	7,299.6	657.7	550.9	261.2	289.73	1.901	
14,800.0	6,870.0	14,704.2	6,870.0	147.4	147.4	-90.21	7,399.6	657.5	550.9	257.3	293.54	1.877	
14,900.0	6,870.0	14,804.2	6,870.0	149.3	149.3	-90.21	7,499.6	657.2	550.9	253.5	297.36	1.853	
15,000.0	6,870.0	14,904.2	6,870.0	151.2	151.2	-90.21	7,599.6	657.0	550.9	249.7	301.17	1.829	
15,100.0	6,870.0	15,004.2	6,870.0	153.1	153.1	-90.21	7,699.6	656.7	550.9	245.9	304.98	1.806	
15,200.0	6,870.0	15,104.2	6,870.0	155.0	155.0	-90.21	7,799.6	656.5	550.9	242.1	308.80	1.784	
15,300.0	6,870.0	15,204.2	6,870.0	156.9	156.9	-90.21	7,899.6	656.2	550.9	238.3	312.61	1.762	
15,400.0	6,870.0	15,304.2	6,870.0	158.8	158.8	-90.21	7,999.6	656.0	550.9	234.5	316.43	1.741	
15,500.0	6,870.0	15,404.2	6,870.0	160.7	160.7	-90.21	8,099.6	655.7	550.9	230.6	320.24	1.720	
15,600.0	6,870.0	15,504.2	6,870.0	162.6	162.6	-90.21	8,199.6	655.5	550.9	226.8	324.06	1.700	
15,700.0	6,870.0	15,604.2	6,870.0	164.5	164.5	-90.21	8,299.6	655.3	550.9	223.0	327.88	1.680	
15,800.0	6,870.0	15,704.2	6,870.0	166.4	166.4	-90.21	8,399.6	655.0	550.9	219.2	331.70	1.661	
15,900.0	6,870.0	15,804.2	6,870.0	168.3	168.4	-90.21	8,499.6	654.8	550.9	215.4	335.51	1.642	
16,000.0	6,870.0	15,904.2	6,870.0	170.2	170.3	-90.21	8,599.6	654.5	550.9	211.6	339.33	1.623	
16,100.0	6,870.0	16,004.2	6,870.0	172.1	172.2	-90.21	8,699.6	654.3	550.9	207.7	343.15	1.605	
16,200.0	6,870.0	16,104.2	6,870.0	174.0	174.1	-90.21	8,799.6	654.0	550.9	203.9	346.97	1.588	
16,300.0	6,870.0	16,204.2	6,870.0	175.9	176.0	-90.21	8,899.6	653.8	550.9	200.1	350.79	1.570	
16,400.0	6,870.0	16,304.2	6,870.0	177.8	177.9	-90.21	8,999.6	653.5	550.9	196.3	354.61	1.553	
16,500.0	6,870.0	16,404.2	6,870.0	179.7	179.8	-90.21	9,099.6	653.3	550.9	192.5	358.44	1.537	
16,600.0	6,870.0	16,504.2	6,870.0	181.6	181.7	-90.21	9,199.6	653.1	550.9	188.6	362.26	1.521	
16,700.0	6,870.0	16,604.2	6,870.0	183.5	183.6	-90.21	9,299.6	652.8	550.9	184.8	366.08	1.505	
16,746.0	6,870.0	16,650.2	6,870.0	184.3	184.5	-90.21	9,345.6	652.7	550.9	183.0	367.84	1.498	Level 3, SF

Reference Depths are relative to WELL @ 4768.0ft (RKB - 15')
Offset Depths are relative to Offset Datum
Central Meridian is -105.500000 °

Coordinates are relative to: SRC Evans D-26-23-14NHZ
Coordinate System is US State Plane 1983, Colorado Northern Zone
Grid Convergence at Surface is: 0.49°



Company: Synergy Resources
Project: SEC.26-T5N-R66W
Reference Site: SRC Evans East Pad Sec.26-T5N-R66W
Site Error: 0.0ft
Reference Well: SRC Evans D-26-23-14NHZ
Well Error: 0.0ft
Reference Wellbore: Wellbore #1
Reference Design: Plan #1 (10-27-14)

Local Co-ordinate Reference: Well SRC Evans D-26-23-14NHZ
TVD Reference: WELL @ 4768.0ft (RKB - 15')
MD Reference: WELL @ 4768.0ft (RKB - 15')
North Reference: True
Survey Calculation Method: Minimum Curvature
Output errors are at 2.00 sigma
Database: Landmark
Offset TVD Reference: Offset Datum

Reference Depths are relative to WELL @ 4768.0ft (RKB - 15')

Offset Depths are relative to Offset Datum

Central Meridian is -105.500000 °

Coordinates are relative to: SRC Evans D-26-23-14NHZ

Coordinate System is US State Plane 1983, Colorado Northern Zone

Grid Convergence at Surface is: 0.49°

