

Synergy Resources

Well Name: **SRC Evans P-26-23-14NHZ**

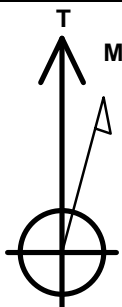
Surface Location: SRC Evans Center Pad Sec.26-T5N-R66W
North American Datum 1983 , US State Plane 1983 , Colorado Northern Zone

Ground Elevation: 4747.0

+N/-S	+E/-W	Northing	Easting	Latitude	Longitude	Slot
0.0	0.0	1379338.49	3210591.30	40.372222	-104.744166	
RKB - 15' WELL @ 4762.0ft (RKB - 15')						

WELLBORE TARGET DETAILS

Name	TVD	+N/-S	+E/-W	Shape
SHL 2021'FNL, 2589'FEL, SEC.26	1.0	0.0	0.0	Point
BHL 2188'FSL, 2554'FEL, SEC.14	6870.0	9477.6	11.4	Point



Azimuths to True North
Magnetic North: 8.40°

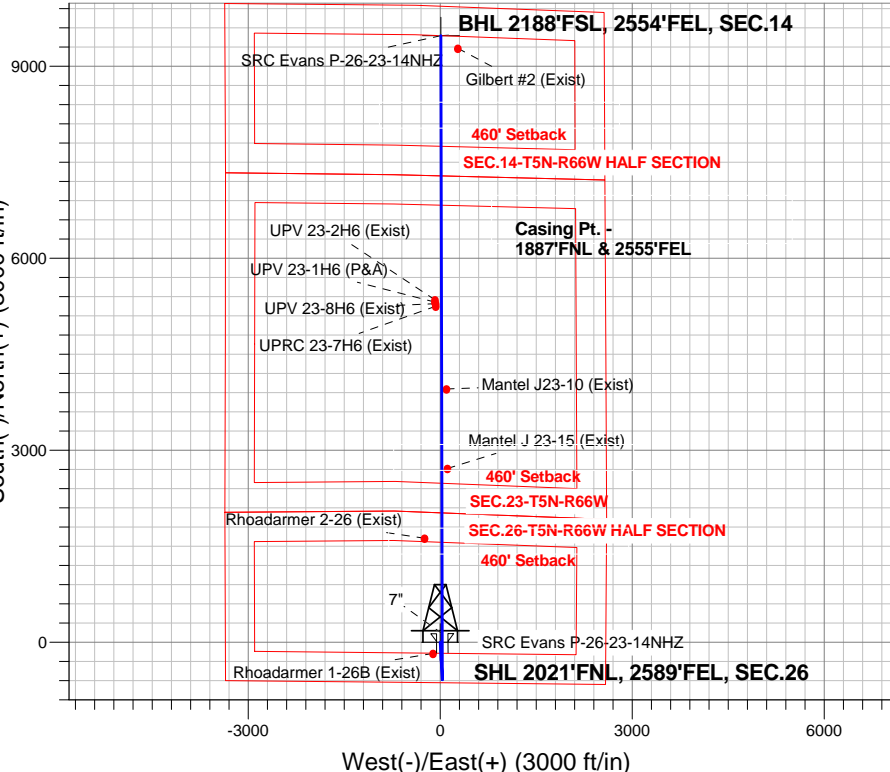
Magnetic Field
Strength: 52763.9snT
Dip Angle: 66.91°
Date: 10/30/2014
Model: IGRF2010

SRC Evans Center Pad Sec.26-T5N-R66W
SRC Evans P-26-23-14NHZ
Plan #1 (10-27-14)
11:40, October 30 2014

ANNOTATIONS

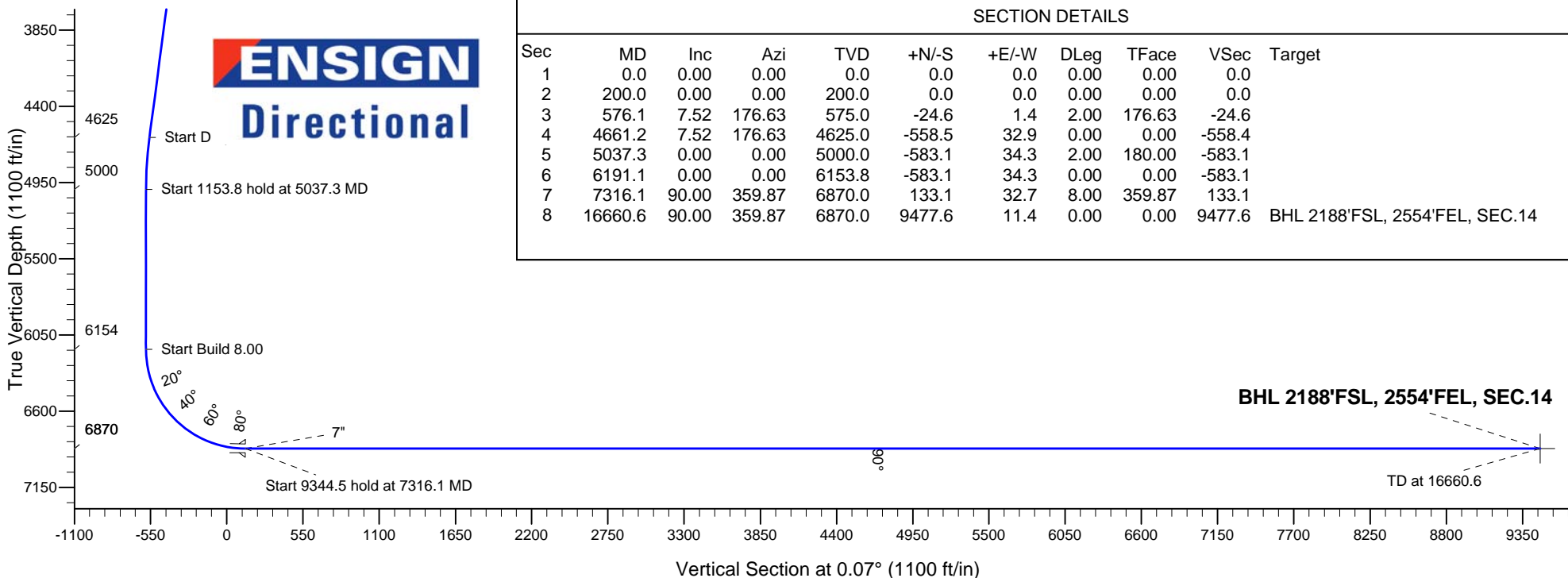
TVD	MD	Annotation
200.0	200.0	KOP - Start Build 2.00
4625.0	4661.2	Start Drop -2.00
5000.0	5037.3	Start 1153.8 hold at 5037.3 MD
6153.8	6191.1	Start Build 8.00
6870.0	7316.1	Start 9344.5 hold at 7316.1 MD
6870.0	16660.6	TD at 16660.6

South(-)/North(+) (3000 ft/in)



West(-)/East(+) (3000 ft/in)

ENSIGN
Directional



SECTION DETAILS

Sec	MD	Inc	Azi	TVD	+N/-S	+E/-W	DLeg	TFace	VSec	Target
1	0.0	0.00	0.00	0.0	0.0	0.0	0.00	0.00	0.0	
2	200.0	0.00	0.00	200.0	0.0	0.0	0.00	0.00	0.0	
3	576.1	7.52	176.63	575.0	-24.6	1.4	2.00	176.63	-24.6	
4	4661.2	7.52	176.63	4625.0	-558.5	32.9	0.00	0.00	-558.4	
5	5037.3	0.00	0.00	5000.0	-583.1	34.3	2.00	180.00	-583.1	
6	6191.1	0.00	0.00	6153.8	-583.1	34.3	0.00	0.00	-583.1	
7	7316.1	90.00	359.87	6870.0	133.1	32.7	8.00	359.87	133.1	
8	16660.6	90.00	359.87	6870.0	9477.6	11.4	0.00	0.00	9477.6	BHL 2188'FSL, 2554'FEL, SEC.14

BHL 2188'FSL, 2554'FEL, SEC.14

TD at 16660.6



Synergy Resources

SEC.26-T5N-R66W

SRC Evans Center Pad Sec.26-T5N-R66W

SRC Evans P-26-23-14NHZ

Wellbore #1

Plan: Plan #1 (10-27-14)

Standard Planning Report

30 October, 2014

Plan Sections										
Measured Depth (ft)	Inclination (°)	Azimuth (°)	Vertical Depth (ft)	+N/-S (ft)	+E/-W (ft)	Dogleg Rate (°/100ft)	Build Rate (°/100ft)	Turn Rate (°/100ft)	TFO (°)	Target
0.0	0.00	0.00	0.0	0.0	0.0	0.00	0.00	0.00	0.00	
200.0	0.00	0.00	200.0	0.0	0.0	0.00	0.00	0.00	0.00	
576.1	7.52	176.63	575.0	-24.6	1.4	2.00	2.00	0.00	176.63	
4,661.2	7.52	176.63	4,625.0	-558.5	32.9	0.00	0.00	0.00	0.00	
5,037.3	0.00	0.00	5,000.0	-583.1	34.3	2.00	-2.00	0.00	180.00	
6,191.1	0.00	0.00	6,153.8	-583.1	34.3	0.00	0.00	0.00	0.00	
7,316.1	90.00	359.87	6,870.0	133.1	32.7	8.00	8.00	0.00	359.87	
16,660.6	90.00	359.87	6,870.0	9,477.6	11.4	0.00	0.00	0.00	0.00	BHL 2188'FSL, 255

Database:	Landmark	Local Co-ordinate Reference:	Well SRC Evans P-26-23-14NHZ
Company:	Synergy Resources	TVD Reference:	WELL @ 4762.0ft (RKB - 15')
Project:	SEC.26-T5N-R66W	MD Reference:	WELL @ 4762.0ft (RKB - 15')
Site:	SRC Evans Center Pad Sec.26-T5N-R66W	North Reference:	True
Well:	SRC Evans P-26-23-14NHZ	Survey Calculation Method:	Minimum Curvature
Wellbore:	Wellbore #1		
Design:	Plan #1 (10-27-14)		

Planned Survey									
Measured Depth (ft)	Inclination (°)	Azimuth (°)	Vertical Depth (ft)	+N/-S (ft)	+E/-W (ft)	Vertical Section (ft)	Dogleg Rate (°/100ft)	Build Rate (°/100ft)	Turn Rate (°/100ft)
0.0	0.00	0.00	0.0	0.0	0.0	0.0	0.00	0.00	0.00
1.0	0.00	0.00	1.0	0.0	0.0	0.0	0.00	0.00	0.00
SHL 2021'FNL, 2589'FEL, SEC.26									
100.0	0.00	0.00	100.0	0.0	0.0	0.0	0.00	0.00	0.00
200.0	0.00	0.00	200.0	0.0	0.0	0.0	0.00	0.00	0.00
KOP - Start Build 2.00									
300.0	2.00	176.63	300.0	-1.7	0.1	-1.7	2.00	2.00	0.00
400.0	4.00	176.63	399.8	-7.0	0.4	-7.0	2.00	2.00	0.00
500.0	6.00	176.63	499.5	-15.7	0.9	-15.7	2.00	2.00	0.00
576.1	7.52	176.63	575.0	-24.6	1.4	-24.6	2.00	2.00	0.00
600.0	7.52	176.63	598.7	-27.7	1.6	-27.7	0.00	0.00	0.00
700.0	7.52	176.63	697.9	-40.8	2.4	-40.8	0.00	0.00	0.00
800.0	7.52	176.63	797.0	-53.9	3.2	-53.9	0.00	0.00	0.00
900.0	7.52	176.63	896.1	-66.9	3.9	-66.9	0.00	0.00	0.00
1,000.0	7.52	176.63	995.3	-80.0	4.7	-80.0	0.00	0.00	0.00
1,100.0	7.52	176.63	1,094.4	-93.1	5.5	-93.1	0.00	0.00	0.00
1,200.0	7.52	176.63	1,193.6	-106.1	6.2	-106.1	0.00	0.00	0.00
1,300.0	7.52	176.63	1,292.7	-119.2	7.0	-119.2	0.00	0.00	0.00
1,400.0	7.52	176.63	1,391.8	-132.3	7.8	-132.3	0.00	0.00	0.00
1,500.0	7.52	176.63	1,491.0	-145.4	8.6	-145.3	0.00	0.00	0.00
1,600.0	7.52	176.63	1,590.1	-158.4	9.3	-158.4	0.00	0.00	0.00
1,700.0	7.52	176.63	1,689.2	-171.5	10.1	-171.5	0.00	0.00	0.00
1,800.0	7.52	176.63	1,788.4	-184.6	10.9	-184.5	0.00	0.00	0.00
1,900.0	7.52	176.63	1,887.5	-197.6	11.6	-197.6	0.00	0.00	0.00
2,000.0	7.52	176.63	1,986.7	-210.7	12.4	-210.7	0.00	0.00	0.00
2,100.0	7.52	176.63	2,085.8	-223.8	13.2	-223.8	0.00	0.00	0.00
2,200.0	7.52	176.63	2,184.9	-236.8	13.9	-236.8	0.00	0.00	0.00
2,300.0	7.52	176.63	2,284.1	-249.9	14.7	-249.9	0.00	0.00	0.00
2,400.0	7.52	176.63	2,383.2	-263.0	15.5	-263.0	0.00	0.00	0.00
2,500.0	7.52	176.63	2,482.4	-276.0	16.2	-276.0	0.00	0.00	0.00
2,600.0	7.52	176.63	2,581.5	-289.1	17.0	-289.1	0.00	0.00	0.00
2,700.0	7.52	176.63	2,680.6	-302.2	17.8	-302.2	0.00	0.00	0.00
2,800.0	7.52	176.63	2,779.8	-315.2	18.5	-315.2	0.00	0.00	0.00
2,900.0	7.52	176.63	2,878.9	-328.3	19.3	-328.3	0.00	0.00	0.00
3,000.0	7.52	176.63	2,978.1	-341.4	20.1	-341.4	0.00	0.00	0.00
3,100.0	7.52	176.63	3,077.2	-354.5	20.9	-354.4	0.00	0.00	0.00
3,200.0	7.52	176.63	3,176.3	-367.5	21.6	-367.5	0.00	0.00	0.00
3,300.0	7.52	176.63	3,275.5	-380.6	22.4	-380.6	0.00	0.00	0.00
3,400.0	7.52	176.63	3,374.6	-393.7	23.2	-393.6	0.00	0.00	0.00
3,500.0	7.52	176.63	3,473.8	-406.7	23.9	-406.7	0.00	0.00	0.00
3,600.0	7.52	176.63	3,572.9	-419.8	24.7	-419.8	0.00	0.00	0.00
3,700.0	7.52	176.63	3,672.0	-432.9	25.5	-432.8	0.00	0.00	0.00
3,800.0	7.52	176.63	3,771.2	-445.9	26.2	-445.9	0.00	0.00	0.00
3,900.0	7.52	176.63	3,870.3	-459.0	27.0	-459.0	0.00	0.00	0.00
4,000.0	7.52	176.63	3,969.5	-472.1	27.8	-472.0	0.00	0.00	0.00
4,100.0	7.52	176.63	4,068.6	-485.1	28.5	-485.1	0.00	0.00	0.00
4,200.0	7.52	176.63	4,167.7	-498.2	29.3	-498.2	0.00	0.00	0.00
4,300.0	7.52	176.63	4,266.9	-511.3	30.1	-511.2	0.00	0.00	0.00
4,400.0	7.52	176.63	4,366.0	-524.4	30.8	-524.3	0.00	0.00	0.00
4,500.0	7.52	176.63	4,465.1	-537.4	31.6	-537.4	0.00	0.00	0.00
4,600.0	7.52	176.63	4,564.3	-550.5	32.4	-550.5	0.00	0.00	0.00
4,661.2	7.52	176.63	4,625.0	-558.5	32.9	-558.4	0.00	0.00	0.00
Start Drop -2.00									

Database:	Landmark	Local Co-ordinate Reference:	Well SRC Evans P-26-23-14NHZ
Company:	Synergy Resources	TVD Reference:	WELL @ 4762.0ft (RKB - 15')
Project:	SEC.26-T5N-R66W	MD Reference:	WELL @ 4762.0ft (RKB - 15')
Site:	SRC Evans Center Pad Sec.26-T5N-R66W	North Reference:	True
Well:	SRC Evans P-26-23-14NHZ	Survey Calculation Method:	Minimum Curvature
Wellbore:	Wellbore #1		
Design:	Plan #1 (10-27-14)		

Planned Survey									
Measured Depth (ft)	Inclination (°)	Azimuth (°)	Vertical Depth (ft)	+N/-S (ft)	+E/-W (ft)	Vertical Section (ft)	Dogleg Rate (°/100ft)	Build Rate (°/100ft)	Turn Rate (°/100ft)
4,700.0	6.75	176.63	4,663.5	-563.3	33.1	-563.3	2.00	-2.00	0.00
4,800.0	4.75	176.63	4,763.0	-573.3	33.7	-573.3	2.00	-2.00	0.00
4,900.0	2.75	176.63	4,862.7	-579.8	34.1	-579.8	2.00	-2.00	0.00
5,000.0	0.75	176.63	4,962.7	-582.9	34.3	-582.8	2.00	-2.00	0.00
5,037.3	0.00	176.63	5,000.0	-583.1	34.3	-583.1	2.00	-2.00	0.00
Start 1153.8 hold at 5037.3 MD									
5,100.0	0.00	0.00	5,062.7	-583.1	34.3	-583.1	0.00	0.00	0.00
5,200.0	0.00	0.00	5,162.7	-583.1	34.3	-583.1	0.00	0.00	0.00
5,300.0	0.00	0.00	5,262.7	-583.1	34.3	-583.1	0.00	0.00	0.00
5,400.0	0.00	0.00	5,362.7	-583.1	34.3	-583.1	0.00	0.00	0.00
5,500.0	0.00	0.00	5,462.7	-583.1	34.3	-583.1	0.00	0.00	0.00
5,600.0	0.00	0.00	5,562.7	-583.1	34.3	-583.1	0.00	0.00	0.00
5,700.0	0.00	0.00	5,662.7	-583.1	34.3	-583.1	0.00	0.00	0.00
5,800.0	0.00	0.00	5,762.7	-583.1	34.3	-583.1	0.00	0.00	0.00
5,900.0	0.00	0.00	5,862.7	-583.1	34.3	-583.1	0.00	0.00	0.00
6,000.0	0.00	0.00	5,962.7	-583.1	34.3	-583.1	0.00	0.00	0.00
6,100.0	0.00	0.00	6,062.7	-583.1	34.3	-583.1	0.00	0.00	0.00
6,191.1	0.00	0.00	6,153.8	-583.1	34.3	-583.1	0.00	0.00	0.00
Start Build 8.00									
6,200.0	0.71	359.87	6,162.7	-583.0	34.3	-583.0	7.98	7.98	0.00
6,300.0	8.71	359.87	6,262.3	-574.8	34.3	-574.8	8.00	8.00	0.00
6,400.0	16.71	359.87	6,359.7	-552.9	34.2	-552.8	8.00	8.00	0.00
6,500.0	24.71	359.87	6,453.2	-517.5	34.2	-517.5	8.00	8.00	0.00
6,600.0	32.71	359.87	6,540.8	-469.5	34.0	-469.5	8.00	8.00	0.00
6,700.0	40.71	359.87	6,620.9	-409.8	33.9	-409.8	8.00	8.00	0.00
6,800.0	48.71	359.87	6,691.9	-339.5	33.7	-339.5	8.00	8.00	0.00
6,900.0	56.71	359.87	6,752.5	-260.0	33.6	-260.0	8.00	8.00	0.00
7,000.0	64.71	359.87	6,801.4	-172.9	33.4	-172.8	8.00	8.00	0.00
7,100.0	72.71	359.87	6,837.6	-79.8	33.2	-79.7	8.00	8.00	0.00
7,200.0	80.71	359.87	6,860.6	17.5	32.9	17.5	8.00	8.00	0.00
7,300.0	88.71	359.87	6,869.8	117.0	32.7	117.0	8.00	8.00	0.00
7,316.1	90.00	359.87	6,870.0	133.1	32.7	133.1	8.00	8.00	0.00
Start 9344.5 hold at 7316.1 MD - 7"									
7,400.0	90.00	359.87	6,870.0	217.0	32.5	217.0	0.00	0.00	0.00
7,500.0	90.00	359.87	6,870.0	317.0	32.3	317.0	0.00	0.00	0.00
7,600.0	90.00	359.87	6,870.0	417.0	32.0	417.0	0.00	0.00	0.00
7,700.0	90.00	359.87	6,870.0	517.0	31.8	517.0	0.00	0.00	0.00
7,800.0	90.00	359.87	6,870.0	617.0	31.6	617.0	0.00	0.00	0.00
7,900.0	90.00	359.87	6,870.0	717.0	31.3	717.0	0.00	0.00	0.00
8,000.0	90.00	359.87	6,870.0	817.0	31.1	817.0	0.00	0.00	0.00
8,100.0	90.00	359.87	6,870.0	917.0	30.9	917.0	0.00	0.00	0.00
8,200.0	90.00	359.87	6,870.0	1,017.0	30.7	1,017.0	0.00	0.00	0.00
8,300.0	90.00	359.87	6,870.0	1,117.0	30.4	1,117.0	0.00	0.00	0.00
8,400.0	90.00	359.87	6,870.0	1,217.0	30.2	1,217.0	0.00	0.00	0.00
8,500.0	90.00	359.87	6,870.0	1,317.0	30.0	1,317.0	0.00	0.00	0.00
8,600.0	90.00	359.87	6,870.0	1,417.0	29.8	1,417.0	0.00	0.00	0.00
8,700.0	90.00	359.87	6,870.0	1,517.0	29.5	1,517.0	0.00	0.00	0.00
8,800.0	90.00	359.87	6,870.0	1,617.0	29.3	1,617.0	0.00	0.00	0.00
8,900.0	90.00	359.87	6,870.0	1,717.0	29.1	1,717.0	0.00	0.00	0.00
9,000.0	90.00	359.87	6,870.0	1,817.0	28.8	1,817.0	0.00	0.00	0.00
9,100.0	90.00	359.87	6,870.0	1,917.0	28.6	1,917.0	0.00	0.00	0.00
9,200.0	90.00	359.87	6,870.0	2,017.0	28.4	2,017.0	0.00	0.00	0.00
9,300.0	90.00	359.87	6,870.0	2,117.0	28.2	2,117.0	0.00	0.00	0.00

Database:	Landmark	Local Co-ordinate Reference:	Well SRC Evans P-26-23-14NHZ
Company:	Synergy Resources	TVD Reference:	WELL @ 4762.0ft (RKB - 15')
Project:	SEC.26-T5N-R66W	MD Reference:	WELL @ 4762.0ft (RKB - 15')
Site:	SRC Evans Center Pad Sec.26-T5N-R66W	North Reference:	True
Well:	SRC Evans P-26-23-14NHZ	Survey Calculation Method:	Minimum Curvature
Wellbore:	Wellbore #1		
Design:	Plan #1 (10-27-14)		

Planned Survey									
Measured Depth (ft)	Inclination (°)	Azimuth (°)	Vertical Depth (ft)	+N/-S (ft)	+E/-W (ft)	Vertical Section (ft)	Dogleg Rate (°/100ft)	Build Rate (°/100ft)	Turn Rate (°/100ft)
9,400.0	90.00	359.87	6,870.0	2,217.0	27.9	2,217.0	0.00	0.00	0.00
9,500.0	90.00	359.87	6,870.0	2,317.0	27.7	2,317.0	0.00	0.00	0.00
9,600.0	90.00	359.87	6,870.0	2,417.0	27.5	2,417.0	0.00	0.00	0.00
9,700.0	90.00	359.87	6,870.0	2,517.0	27.2	2,517.0	0.00	0.00	0.00
9,800.0	90.00	359.87	6,870.0	2,617.0	27.0	2,617.0	0.00	0.00	0.00
9,900.0	90.00	359.87	6,870.0	2,717.0	26.8	2,717.0	0.00	0.00	0.00
10,000.0	90.00	359.87	6,870.0	2,817.0	26.6	2,817.0	0.00	0.00	0.00
10,100.0	90.00	359.87	6,870.0	2,917.0	26.3	2,917.0	0.00	0.00	0.00
10,200.0	90.00	359.87	6,870.0	3,017.0	26.1	3,017.0	0.00	0.00	0.00
10,300.0	90.00	359.87	6,870.0	3,117.0	25.9	3,117.0	0.00	0.00	0.00
10,400.0	90.00	359.87	6,870.0	3,217.0	25.7	3,217.0	0.00	0.00	0.00
10,500.0	90.00	359.87	6,870.0	3,317.0	25.4	3,317.0	0.00	0.00	0.00
10,600.0	90.00	359.87	6,870.0	3,417.0	25.2	3,417.0	0.00	0.00	0.00
10,700.0	90.00	359.87	6,870.0	3,517.0	25.0	3,517.0	0.00	0.00	0.00
10,800.0	90.00	359.87	6,870.0	3,617.0	24.7	3,617.0	0.00	0.00	0.00
10,900.0	90.00	359.87	6,870.0	3,717.0	24.5	3,717.0	0.00	0.00	0.00
11,000.0	90.00	359.87	6,870.0	3,817.0	24.3	3,817.0	0.00	0.00	0.00
11,100.0	90.00	359.87	6,870.0	3,917.0	24.1	3,917.0	0.00	0.00	0.00
11,200.0	90.00	359.87	6,870.0	4,017.0	23.8	4,017.0	0.00	0.00	0.00
11,300.0	90.00	359.87	6,870.0	4,117.0	23.6	4,117.0	0.00	0.00	0.00
11,400.0	90.00	359.87	6,870.0	4,217.0	23.4	4,217.0	0.00	0.00	0.00
11,500.0	90.00	359.87	6,870.0	4,317.0	23.2	4,317.0	0.00	0.00	0.00
11,600.0	90.00	359.87	6,870.0	4,417.0	22.9	4,417.0	0.00	0.00	0.00
11,700.0	90.00	359.87	6,870.0	4,517.0	22.7	4,517.0	0.00	0.00	0.00
11,800.0	90.00	359.87	6,870.0	4,617.0	22.5	4,617.0	0.00	0.00	0.00
11,900.0	90.00	359.87	6,870.0	4,717.0	22.2	4,717.0	0.00	0.00	0.00
12,000.0	90.00	359.87	6,870.0	4,817.0	22.0	4,817.0	0.00	0.00	0.00
12,100.0	90.00	359.87	6,870.0	4,917.0	21.8	4,917.0	0.00	0.00	0.00
12,200.0	90.00	359.87	6,870.0	5,017.0	21.6	5,017.0	0.00	0.00	0.00
12,300.0	90.00	359.87	6,870.0	5,117.0	21.3	5,117.0	0.00	0.00	0.00
12,400.0	90.00	359.87	6,870.0	5,217.0	21.1	5,217.0	0.00	0.00	0.00
12,500.0	90.00	359.87	6,870.0	5,317.0	20.9	5,317.0	0.00	0.00	0.00
12,600.0	90.00	359.87	6,870.0	5,417.0	20.7	5,417.0	0.00	0.00	0.00
12,700.0	90.00	359.87	6,870.0	5,517.0	20.4	5,517.0	0.00	0.00	0.00
12,800.0	90.00	359.87	6,870.0	5,617.0	20.2	5,617.0	0.00	0.00	0.00
12,900.0	90.00	359.87	6,870.0	5,717.0	20.0	5,717.0	0.00	0.00	0.00
13,000.0	90.00	359.87	6,870.0	5,817.0	19.7	5,817.0	0.00	0.00	0.00
13,100.0	90.00	359.87	6,870.0	5,917.0	19.5	5,917.0	0.00	0.00	0.00
13,200.0	90.00	359.87	6,870.0	6,017.0	19.3	6,017.0	0.00	0.00	0.00
13,300.0	90.00	359.87	6,870.0	6,117.0	19.1	6,117.0	0.00	0.00	0.00
13,400.0	90.00	359.87	6,870.0	6,217.0	18.8	6,217.0	0.00	0.00	0.00
13,500.0	90.00	359.87	6,870.0	6,317.0	18.6	6,317.0	0.00	0.00	0.00
13,600.0	90.00	359.87	6,870.0	6,417.0	18.4	6,417.0	0.00	0.00	0.00
13,700.0	90.00	359.87	6,870.0	6,517.0	18.2	6,517.0	0.00	0.00	0.00
13,800.0	90.00	359.87	6,870.0	6,617.0	17.9	6,617.0	0.00	0.00	0.00
13,900.0	90.00	359.87	6,870.0	6,717.0	17.7	6,717.0	0.00	0.00	0.00
14,000.0	90.00	359.87	6,870.0	6,817.0	17.5	6,817.0	0.00	0.00	0.00
14,100.0	90.00	359.87	6,870.0	6,917.0	17.2	6,917.0	0.00	0.00	0.00
14,200.0	90.00	359.87	6,870.0	7,017.0	17.0	7,017.0	0.00	0.00	0.00
14,300.0	90.00	359.87	6,870.0	7,117.0	16.8	7,117.0	0.00	0.00	0.00
14,400.0	90.00	359.87	6,870.0	7,217.0	16.6	7,217.0	0.00	0.00	0.00
14,500.0	90.00	359.87	6,870.0	7,317.0	16.3	7,317.0	0.00	0.00	0.00
14,600.0	90.00	359.87	6,870.0	7,417.0	16.1	7,417.0	0.00	0.00	0.00
14,700.0	90.00	359.87	6,870.0	7,517.0	15.9	7,517.0	0.00	0.00	0.00

Plan Annotations					
	Measured Depth (ft)	Vertical Depth (ft)	Local Coordinates		Comment
			+N/-S (ft)	+E/-W (ft)	
	200.0	200.0	0.0	0.0	KOP - Start Build 2.00
	4,661.2	4,625.0	-24.6	1.4	Start Drop -2.00
	5,037.3	5,000.0	-558.5	32.9	Start 1153.8 hold at 5037.3 MD
	6,191.1	6,153.8	-583.1	34.3	Start Build 8.00
	7,316.1	6,870.0	-583.1	34.3	Start 9344.5 hold at 7316.1 MD
	16,660.6	6,870.0	133.1	32.7	TD at 16660.6



Synergy Resources

SEC.26-T5N-R66W

SRC Evans Center Pad Sec.26-T5N-R66W

SRC Evans P-26-23-14NHZ

Wellbore #1

Plan #1 (10-27-14)

Anticollision Report

30 October, 2014

Company:	Synergy Resources	Local Co-ordinate Reference:	Well SRC Evans P-26-23-14NHZ
Project:	SEC.26-T5N-R66W	TVD Reference:	WELL @ 4762.0ft (RKB - 15')
Reference Site:	SRC Evans Center Pad Sec.26-T5N-R66W	MD Reference:	WELL @ 4762.0ft (RKB - 15')
Site Error:	0.0ft	North Reference:	True
Reference Well:	SRC Evans P-26-23-14NHZ	Survey Calculation Method:	Minimum Curvature
Well Error:	0.0ft	Output errors are at	2.00 sigma
Reference Wellbore	Wellbore #1	Database:	Landmark
Reference Design:	Plan #1 (10-27-14)	Offset TVD Reference:	Offset Datum

Reference	Plan #1 (10-27-14)		
Filter type:	NO GLOBAL FILTER: Using user defined selection & filtering criteria		
Interpolation Method:	Stations	Error Model:	ISCWSA
Depth Range:	Unlimited	Scan Method:	Closest Approach 3D
Results Limited by:	Maximum center-center distance of 800.0ft	Error Surface:	Elliptical Conic
Warning Levels Evaluated at:	2.00 Sigma		

Survey Tool Program		Date	10/30/2014		
From (ft)	To (ft)	Survey (Wellbore)	Tool Name	Description	
0.0	16,660.6	Plan #1 (10-27-14) (Wellbore #1)	MWD	MWD - Standard	

Summary						
Site Name	Reference Measured Depth (ft)	Offset Measured Depth (ft)	Distance Between Centres (ft)	Distance Between Ellipses (ft)	Separation Factor	Warning
Offset Well - Wellbore - Design						
Existing Wells Sec.26-T5N-R66W						
Gilbert #2 (Exist) - Wellbore #1 - Wellbore #1	16,464.4	6,948.0	265.6	-55.8	0.826	Level 1, CC, ES, SF
Mantel J 23-15 (Exist) - Wellbore #1 - Wellbore #1	9,899.9	6,898.0	86.3	-109.5	0.441	Level 1, CC
Mantel J 23-15 (Exist) - Wellbore #1 - Wellbore #1	9,900.0	6,898.0	86.3	-109.5	0.441	Level 1, ES, SF
Mantel J23-10 (Exist) - Wellbore #1 - Wellbore #1	11,142.1	6,919.0	75.2	-144.2	0.343	Level 1, CC, ES, SF
Rhoadarmer 1-26B (Exist) - Wellbore #1 - Wellbore #1	1,677.6	1,648.0	119.9	82.1	3.173	CC
Rhoadarmer 1-26B (Exist) - Wellbore #1 - Wellbore #1	7,000.0	6,782.4	143.2	-8.7	0.942	Level 1, ES, SF
Rhoadarmer 2-26 (Exist) - Wellbore #1 - Wellbore #1	8,807.7	6,881.0	272.8	97.0	1.552	CC, ES, SF
UPRC 23-7H6 (Exist) - Wellbore #1 - Wellbore #1	12,435.8	6,968.0	89.0	-155.8	0.363	Level 1, CC, ES, SF
UPV 23-1H6 (P&A) - Wellbore #1 - Wellbore #1	12,497.8	6,968.0	100.0	-146.0	0.406	Level 1, CC, SF
UPV 23-1H6 (P&A) - Wellbore #1 - Wellbore #1	12,500.0	6,968.0	100.0	-146.0	0.407	Level 1, ES
UPV 23-2H6 (Exist) - Wellbore #1 - Wellbore #1	12,534.3	6,968.0	102.7	-144.0	0.416	Level 1, CC, ES, SF
UPV 23-8H6 (Exist) - Wellbore #1 - Wellbore #1	12,472.3	6,968.0	91.7	-153.8	0.373	Level 1, CC, ES, SF
SRC Evans Center Pad Sec.26-T5N-R66W						
SRC Evans 23-26-23-14CHZ - Wellbore #1 - Plan #1 (10	200.0	200.0	22.6	21.9	33.491	CC, ES
SRC Evans 23-26-23-14CHZ - Wellbore #1 - Plan #1 (10	16,660.6	16,987.2	429.8	166.3	1.631	SF
SRC Evans 23-26-23-14NHZ - Wellbore #1 - Plan #1 (10	200.0	201.0	45.2	44.5	66.766	CC, ES
SRC Evans 23-26-23-14NHZ - Wellbore #1 - Plan #1 (10	16,660.6	16,693.2	545.9	174.7	1.471	Level 3, SF
SRC Evans 33-26-23-14NHZ - Wellbore #1 - Plan #1 (10	200.0	202.0	112.6	111.9	165.836	CC, ES
SRC Evans 33-26-23-14NHZ - Wellbore #1 - Plan #1 (10	16,660.6	16,701.9	551.3	181.3	1.490	Level 3, SF
SRC Evans O-26-23-14CHZ - Wellbore #1 - Plan #1 (10-	200.0	201.0	90.0	89.3	133.000	CC, ES
SRC Evans O-26-23-14CHZ - Wellbore #1 - Plan #1 (10-	3,400.0	3,387.1	420.0	399.1	20.110	SF
SRC Evans O-26-23-14NHZ - Wellbore #1 - Plan #1 (10-	200.0	202.0	135.2	134.5	199.111	CC, ES
SRC Evans O-26-23-14NHZ - Wellbore #1 - Plan #1 (10-	3,200.0	3,180.8	471.0	451.5	24.115	SF
SRC Evans P-26-23-14CHZ - Wellbore #1 - Plan #1 (10-	200.0	201.0	67.4	66.7	99.614	CC, ES
SRC Evans P-26-23-14CHZ - Wellbore #1 - Plan #1 (10-	16,660.6	16,995.0	429.2	166.4	1.633	SF

Offset Design													
Existing Wells Sec.26-T5N-R66W - Gilbert #2 (Exist) - Wellbore #1 - Wellbore #1													
Survey Program: 7392-UNKNOWN													
Reference													
Measured Depth (ft)	Vertical Depth (ft)	Measured Depth (ft)	Vertical Depth (ft)	Reference (ft)	Offset (ft)	Highside Toolface (°)	Offset Wellbore Centre +N/-S (ft)	+E/-W (ft)	Distance Between Centres (ft)	Distance Between Ellipses (ft)	Minimum Separation (ft)	Separation Factor	Warning
15,800.0	6,870.0	6,948.0	6,948.0	169.6	139.0	90.00	9,281.9	277.4	715.5	406.9	308.59	2.318	
15,900.0	6,870.0	6,948.0	6,948.0	171.5	139.0	90.00	9,281.9	277.4	623.7	313.2	310.51	2.009	

CC - Min centre to center distance or covergent point, SF - min separation factor, ES - min ellipse separation

Company:	Synergy Resources	Local Co-ordinate Reference:	Well SRC Evans P-26-23-14NHZ
Project:	SEC.26-T5N-R66W	TVD Reference:	WELL @ 4762.0ft (RKB - 15')
Reference Site:	SRC Evans Center Pad Sec.26-T5N-R66W	MD Reference:	WELL @ 4762.0ft (RKB - 15')
Site Error:	0.0ft	North Reference:	True
Reference Well:	SRC Evans P-26-23-14NHZ	Survey Calculation Method:	Minimum Curvature
Well Error:	0.0ft	Output errors are at	2.00 sigma
Reference Wellbore	Wellbore #1	Database:	Landmark
Reference Design:	Plan #1 (10-27-14)	Offset TVD Reference:	Offset Datum

Offset Design Existing Wells Sec.26-T5N-R66W - Gilbert #2 (Exist) - Wellbore #1 - Wellbore #1												Offset Site Error:	0.0 ft
Survey Program: 7392-UNKNOWN												Offset Well Error:	0.0 ft
Reference	Offset	Semi Major Axis		Distance									
Measured Depth (ft)	Vertical Depth (ft)	Measured Depth (ft)	Vertical Depth (ft)	Reference (ft)	Offset (ft)	Highside Toolface (°)	Offset Wellbore Centre +N/-S (ft)	+E/-W (ft)	Between Centres (ft)	Between Ellipses (ft)	Minimum Separation (ft)	Separation Factor	Warning
16,000.0	6,870.0	6,948.0	6,948.0	173.5	139.0	90.00	9,281.9	277.4	534.9	222.5	312.42	1.712	
16,100.0	6,870.0	6,948.0	6,948.0	175.4	139.0	90.00	9,281.9	277.4	450.9	136.5	314.33	1.434	Level 3
16,200.0	6,870.0	6,948.0	6,948.0	177.3	139.0	90.00	9,281.9	277.4	374.7	58.5	316.25	1.185	Level 2
16,300.0	6,870.0	6,948.0	6,948.0	179.2	139.0	90.00	9,281.9	277.4	312.3	-5.9	318.16	0.982	Level 1
16,400.0	6,870.0	6,948.0	6,948.0	181.1	139.0	90.00	9,281.9	277.4	273.2	-46.8	320.07	0.854	Level 1
16,464.4	6,870.0	6,948.0	6,948.0	182.3	139.0	90.00	9,281.9	277.4	265.6	-55.8	321.30	0.826	Level 1, CC, ES, SF
16,500.0	6,870.0	6,948.0	6,948.0	183.0	139.0	90.00	9,281.9	277.4	267.9	-54.1	321.99	0.832	Level 1
16,600.0	6,870.0	6,948.0	6,948.0	184.9	139.0	90.00	9,281.9	277.4	298.2	-25.7	323.90	0.921	Level 1
16,660.6	6,870.0	6,948.0	6,948.0	186.1	139.0	90.00	9,281.9	277.4	330.2	5.1	325.06	1.016	Level 2

Company:	Synergy Resources	Local Co-ordinate Reference:	Well SRC Evans P-26-23-14NHZ
Project:	SEC.26-T5N-R66W	TVD Reference:	WELL @ 4762.0ft (RKB - 15')
Reference Site:	SRC Evans Center Pad Sec.26-T5N-R66W	MD Reference:	WELL @ 4762.0ft (RKB - 15')
Site Error:	0.0ft	North Reference:	True
Reference Well:	SRC Evans P-26-23-14NHZ	Survey Calculation Method:	Minimum Curvature
Well Error:	0.0ft	Output errors are at	2.00 sigma
Reference Wellbore	Wellbore #1	Database:	Landmark
Reference Design:	Plan #1 (10-27-14)	Offset TVD Reference:	Offset Datum

Offset Design												Offset Site Error:	0.0 ft
Existing Wells Sec.26-T5N-R66W - Mantel J 23-15 (Exist) - Wellbore #1 - Wellbore #1												Offset Well Error:	0.0 ft
Survey Program: 7395-UNKNOWN													
Reference		Offset		Semi Major Axis			Distance						
Measured Depth (ft)	Vertical Depth (ft)	Measured Depth (ft)	Vertical Depth (ft)	Reference (ft)	Offset (ft)	Highside Toolface (°)	Offset Wellbore Centre +N/-S (ft)	+E/-W (ft)	Between Centres (ft)	Between Ellipses (ft)	Minimum Separation (ft)	Separation Factor	Warning
9,200.0	6,870.0	6,898.0	6,898.0	45.1	138.0	90.00	2,717.0	113.1	705.2	522.1	183.08	3.852	
9,300.0	6,870.0	6,898.0	6,898.0	46.9	138.0	90.00	2,717.0	113.1	606.0	421.2	184.87	3.278	
9,400.0	6,870.0	6,898.0	6,898.0	48.7	138.0	90.00	2,717.0	113.1	507.3	320.6	186.68	2.717	
9,500.0	6,870.0	6,898.0	6,898.0	50.5	138.0	90.00	2,717.0	113.1	409.1	220.6	188.49	2.170	
9,600.0	6,870.0	6,898.0	6,898.0	52.4	138.0	90.00	2,717.0	113.1	312.0	121.7	190.31	1.640	
9,700.0	6,870.0	6,898.0	6,898.0	54.2	138.0	90.00	2,717.0	113.1	217.7	25.6	192.14	1.133	Level 2
9,800.0	6,870.0	6,898.0	6,898.0	56.0	138.0	90.00	2,717.0	113.1	132.0	-62.0	193.97	0.680	Level 1
9,899.9	6,870.0	6,898.0	6,898.0	57.9	138.0	90.00	2,717.0	113.1	86.3	-109.5	195.81	0.441	Level 1, CC
9,900.0	6,870.0	6,898.0	6,898.0	57.9	138.0	90.00	2,717.0	113.1	86.3	-109.5	195.81	0.441	Level 1, ES, SF
10,000.0	6,870.0	6,898.0	6,898.0	59.7	138.0	90.00	2,717.0	113.1	132.2	-65.4	197.66	0.669	Level 1
10,100.0	6,870.0	6,898.0	6,898.0	61.5	138.0	90.00	2,717.0	113.1	218.0	18.5	199.51	1.093	Level 2
10,200.0	6,870.0	6,898.0	6,898.0	63.4	138.0	90.00	2,717.0	113.1	312.3	110.9	201.36	1.551	
10,300.0	6,870.0	6,898.0	6,898.0	65.3	138.0	90.00	2,717.0	113.1	409.3	206.1	203.22	2.014	
10,400.0	6,870.0	6,898.0	6,898.0	67.1	138.0	90.00	2,717.0	113.1	507.5	302.5	205.08	2.475	
10,500.0	6,870.0	6,898.0	6,898.0	69.0	138.0	90.00	2,717.0	113.1	606.3	399.4	206.95	2.930	
10,600.0	6,870.0	6,898.0	6,898.0	70.9	138.0	90.00	2,717.0	113.1	705.4	496.6	208.81	3.378	

Company:	Synergy Resources	Local Co-ordinate Reference:	Well SRC Evans P-26-23-14NHZ
Project:	SEC.26-T5N-R66W	TVD Reference:	WELL @ 4762.0ft (RKB - 15')
Reference Site:	SRC Evans Center Pad Sec.26-T5N-R66W	MD Reference:	WELL @ 4762.0ft (RKB - 15')
Site Error:	0.0ft	North Reference:	True
Reference Well:	SRC Evans P-26-23-14NHZ	Survey Calculation Method:	Minimum Curvature
Well Error:	0.0ft	Output errors are at	2.00 sigma
Reference Wellbore	Wellbore #1	Database:	Landmark
Reference Design:	Plan #1 (10-27-14)	Offset TVD Reference:	Offset Datum

Offset Design		Existing Wells Sec.26-T5N-R66W - Mantel J23-10 (Exist) - Wellbore #1 - Wellbore #1											Offset Site Error:		0.0 ft	
Survey Program: 7431-UNKNOWN														Offset Well Error:		0.0 ft
Reference		Offset		Semi Major Axis			Distance							Warning		
Measured Depth (ft)	Vertical Depth (ft)	Measured Depth (ft)	Vertical Depth (ft)	Reference (ft)	Offset (ft)	Highside Toolface (°)	Offset Wellbore Centre +N/-S (ft)	+E/-W (ft)	Between Centres (ft)	Between Ellipses (ft)	Minimum Separation (ft)	Separation Factor				
10,400.0	6,870.0	6,919.0	6,919.0	67.1	138.4	90.00	3,959.3	99.2	746.0	540.5	205.50	3.630	Level 2			
10,500.0	6,870.0	6,919.0	6,919.0	69.0	138.4	90.00	3,959.3	99.2	646.6	439.2	207.37	3.118				
10,600.0	6,870.0	6,919.0	6,919.0	70.9	138.4	90.00	3,959.3	99.2	547.4	338.1	209.23	2.616				
10,700.0	6,870.0	6,919.0	6,919.0	72.7	138.4	90.00	3,959.3	99.2	448.5	237.4	211.10	2.125				
10,800.0	6,870.0	6,919.0	6,919.0	74.6	138.4	90.00	3,959.3	99.2	350.4	137.4	212.98	1.645				
10,900.0	6,870.0	6,919.0	6,919.0	76.5	138.4	90.00	3,959.3	99.2	253.6	38.7	214.85	1.180				
11,000.0	6,870.0	6,919.0	6,919.0	78.4	138.4	90.00	3,959.3	99.2	160.9	-55.9	216.73	0.742	Level 1			
11,100.0	6,870.0	6,919.0	6,919.0	80.2	138.4	90.00	3,959.3	99.2	86.2	-132.4	218.61	0.394	Level 1			
11,142.1	6,870.0	6,919.0	6,919.0	81.0	138.4	90.00	3,959.3	99.2	75.2	-144.2	219.40	0.343	Level 1, CC, ES, SF			
11,200.0	6,870.0	6,919.0	6,919.0	82.1	138.4	90.00	3,959.3	99.2	94.9	-125.6	220.49	0.430	Level 1			
11,300.0	6,870.0	6,919.0	6,919.0	84.0	138.4	90.00	3,959.3	99.2	174.8	-47.6	222.38	0.786	Level 1			
11,400.0	6,870.0	6,919.0	6,919.0	85.9	138.4	90.00	3,959.3	99.2	268.6	44.3	224.26	1.198	Level 2			
11,500.0	6,870.0	6,919.0	6,919.0	87.8	138.4	90.00	3,959.3	99.2	365.6	139.5	226.15	1.617				
11,600.0	6,870.0	6,919.0	6,919.0	89.7	138.4	90.00	3,959.3	99.2	463.9	235.9	228.04	2.035				
11,700.0	6,870.0	6,919.0	6,919.0	91.5	138.4	90.00	3,959.3	99.2	562.9	332.9	229.93	2.448				
11,800.0	6,870.0	6,919.0	6,919.0	93.4	138.4	90.00	3,959.3	99.2	662.1	430.3	231.82	2.856				
11,900.0	6,870.0	6,919.0	6,919.0	95.3	138.4	90.00	3,959.3	99.2	761.5	527.8	233.71	3.258				

Existing Wells Sec.26-T5N-R66W - Rhoadarmer 1-26B (Exist) - Wellbore #1 - Wellbore #1													Offset Site Error:	0.0 ft
Survey Program: 7798-UNKNOWN													Offset Well Error:	0.0 ft
Reference		Offset		Semi Major Axis			Distance							
Measured Depth	Vertical Depth	Measured Depth	Vertical Depth	Reference	Offset	Highside Toolface	Offset Wellbore Centre		Between Centres	Between Ellipses	Minimum Separation	Separation Factor	Warning	
(ft)	(ft)	(ft)	(ft)	(ft)	(ft)	(°)	+N/-S (ft)	+E/-W (ft)	(ft)	(ft)	(ft)			
0.0	0.0	0.0	0.0	0.0	0.0	-147.99	-175.6	-109.8	208.0					
100.0	100.0	81.0	81.0	0.1	1.6	-147.99	-175.6	-109.8	207.1	205.4	1.73	119.532		
200.0	200.0	181.0	181.0	0.3	3.6	-147.99	-175.6	-109.8	207.1	203.1	3.96	52.333		
300.0	300.0	281.0	281.0	0.5	5.6	35.68	-175.6	-109.8	205.7	199.5	6.16	33.404		
400.0	399.8	380.8	380.8	0.8	7.6	36.60	-175.6	-109.8	201.4	193.1	8.35	24.132		
500.0	499.5	480.5	480.5	1.0	9.6	38.21	-175.6	-109.8	194.5	184.0	10.55	18.446		
576.1	575.0	556.0	556.0	1.2	11.1	39.99	-175.6	-109.8	187.5	175.3	12.22	15.344		
600.0	598.7	579.7	579.7	1.3	11.6	40.61	-175.6	-109.8	185.1	172.4	12.76	14.513		
700.0	697.9	678.9	678.9	1.6	13.6	43.38	-175.6	-109.8	175.4	160.4	15.01	11.685		
800.0	797.0	778.0	778.0	1.9	15.6	46.47	-175.6	-109.8	166.1	148.8	17.28	9.610		
900.0	896.1	877.1	877.1	2.2	17.5	49.91	-175.6	-109.8	157.3	137.7	19.57	8.037		
1,000.0	995.3	976.3	976.3	2.6	19.5	53.74	-175.6	-109.8	149.2	127.3	21.88	6.817		
1,100.0	1,094.4	1,075.4	1,075.4	2.9	21.5	57.99	-175.6	-109.8	141.8	117.6	24.21	5.856		
1,200.0	1,193.6	1,174.6	1,174.6	3.2	23.5	62.66	-175.6	-109.8	135.2	108.7	26.55	5.093		
1,300.0	1,292.7	1,273.7	1,273.7	3.6	25.5	67.77	-175.6	-109.8	129.7	100.8	28.91	4.487		
1,400.0	1,391.8	1,372.8	1,372.8	3.9	27.5	73.28	-175.6	-109.8	125.3	94.0	31.27	4.007		
1,500.0	1,491.0	1,472.0	1,472.0	4.2	29.4	79.12	-175.6	-109.8	122.1	88.5	33.63	3.631		
1,600.0	1,590.1	1,571.1	1,571.1	4.6	31.4	85.20	-175.6	-109.8	120.3	84.4	35.98	3.344		
1,677.6	1,667.0	1,648.0	1,648.0	4.8	33.0	90.00	-175.6	-109.8	119.9	82.1	37.79	3.173 CC		
1,700.0	1,689.2	1,670.2	1,670.2	4.9	33.4	91.39	-175.6	-109.8	119.9	81.6	38.31	3.131		
1,800.0	1,788.4	1,769.4	1,769.4	5.2	35.4	97.55	-175.6	-109.8	121.0	80.4	40.61	2.979		
1,900.0	1,887.5	1,868.5	1,868.5	5.6	37.4	103.54	-175.6	-109.8	123.4	80.5	42.88	2.878		
2,000.0	1,986.7	1,967.7	1,967.7	5.9	39.4	109.24	-175.6	-109.8	127.1	82.0	45.11	2.818		
2,100.0	2,085.8	2,066.8	2,066.8	6.3	41.3	114.57	-175.6	-109.8	132.0	84.7	47.31	2.791		
2,200.0	2,184.9	2,165.9	2,165.9	6.6	43.3	119.49	-175.6	-109.8	138.0	88.5	49.49	2.789		
2,300.0	2,284.1	2,265.1	2,265.1	6.9	45.3	123.97	-175.6	-109.8	145.0	93.3	51.65	2.807		
2,400.0	2,383.2	2,364.2	2,364.2	7.3	47.3	128.02	-175.6	-109.8	152.7	98.9	53.80	2.839		
2,500.0	2,482.4	2,463.4	2,463.4	7.6	49.3	131.67	-175.6	-109.8	161.1	105.2	55.94	2.881		
2,600.0	2,581.5	2,562.5	2,562.5	8.0	51.3	134.95	-175.6	-109.8	170.2	112.1	58.08	2.930		
2,700.0	2,680.6	2,661.6	2,661.6	8.3	53.2	137.90	-175.6	-109.8	179.7	119.5	60.22	2.984		
2,800.0	2,779.8	2,760.8	2,760.8	8.6	55.2	140.54	-175.6	-109.8	189.7	127.3	62.37	3.041		
2,900.0	2,878.9	2,859.9	2,859.9	9.0	57.2	142.92	-175.6	-109.8	200.0	135.5	64.51	3.100		
3,000.0	2,978.1	2,959.1	2,959.1	9.3	59.2	145.06	-175.6	-109.8	210.6	143.9	66.66	3.159		
3,100.0	3,077.2	3,058.2	3,058.2	9.6	61.2	147.00	-175.6	-109.8	221.5	152.7	68.81	3.218		
3,200.0	3,176.3	3,157.3	3,157.3	10.0	63.1	148.75	-175.6	-109.8	232.6	161.6	70.97	3.277		
3,300.0	3,275.5	3,256.5	3,256.5	10.3	65.1	150.34	-175.6	-109.8	243.9	170.8	73.13	3.335		
3,400.0	3,374.6	3,355.6	3,355.6	10.7	67.1	151.79	-175.6	-109.8	255.4	180.1	75.30	3.392		
3,500.0	3,473.8	3,454.8	3,454.8	11.0	69.1	153.12	-175.6	-109.8	267.0	189.6	77.46	3.447		
3,600.0	3,572.9	3,553.9	3,553.9	11.3	71.1	154.33	-175.6	-109.8	278.8	199.1	79.63	3.501		
3,700.0	3,672.0	3,653.0	3,653.0	11.7	73.1	155.45	-175.6	-109.8	290.6	208.8	81.81	3.553		
3,800.0	3,771.2	3,752.2	3,752.2	12.0	75.0	156.48	-175.6	-109.8	302.6	218.6	83.98	3.603		
3,900.0	3,870.3	3,851.3	3,851.3	12.4	77.0	157.43	-175.6	-109.8	314.7	228.5	86.16	3.652		
4,000.0	3,969.5	3,950.5	3,950.5	12.7	79.0	158.31	-175.6	-109.8	326.8	238.5	88.34	3.699		
4,100.0	4,068.6	4,049.6	4,049.6	13.0	81.0	159.12	-175.6	-109.8	339.0	248.5	90.53	3.745		
4,200.0	4,167.7	4,148.7	4,148.7	13.4	83.0	159.88	-175.6	-109.8	351.3	258.6	92.71	3.789		
4,300.0	4,266.9	4,247.9	4,247.9	13.7	85.0	160.59	-175.6	-109.8	363.6	268.8	94.90	3.832		
4,400.0	4,366.0	4,347.0	4,347.0	14.1	86.9	161.26	-175.6	-109.8	376.0	278.9	97.09	3.873		
4,500.0	4,465.1	4,446.1	4,446.1	14.4	88.9	161.88	-175.6	-109.8	388.5	289.2	99.28	3.913		
4,600.0	4,564.3	4,545.3	4,545.3	14.7	90.9	162.46	-175.6	-109.8	400.9	299.5	101.47	3.951		
4,661.2	4,625.0	4,606.0	4,606.0	14.9	92.1	162.80	-175.6	-109.8	408.6	305.8	102.81	3.974		
4,700.0	4,663.5	4,644.5	4,644.5	15.1	92.9	163.02	-175.6	-109.8	413.2	309.4	103.79	3.981		
4,800.0	4,763.0	4,744.0	4,744.0	15.3	94.9	163.47	-175.6	-109.8	422.8	316.6	106.23	3.980		

Company:	Synergy Resources	Local Co-ordinate Reference:	Well SRC Evans P-26-23-14NHZ
Project:	SEC.26-T5N-R66W	TVD Reference:	WELL @ 4762.0ft (RKB - 15')
Reference Site:	SRC Evans Center Pad Sec.26-T5N-R66W	MD Reference:	WELL @ 4762.0ft (RKB - 15')
Site Error:	0.0ft	North Reference:	True
Reference Well:	SRC Evans P-26-23-14NHZ	Survey Calculation Method:	Minimum Curvature
Well Error:	0.0ft	Output errors are at	2.00 sigma
Reference Wellbore	Wellbore #1	Database:	Landmark
Reference Design:	Plan #1 (10-27-14)	Offset TVD Reference:	Offset Datum

Offset Design		Existing Wells Sec.26-T5N-R66W - Rhoadarmer 1-26B (Exist) - Wellbore #1 - Wellbore #1											Offset Site Error: 0.0 ft		
Survey Program: 7798-UNKNOWN														Offset Well Error: 0.0 ft	
Reference		Offset		Semi Major Axis		Distance								Warning	
Measured Depth	Vertical Depth	Measured Depth	Vertical Depth	Reference	Offset	Highside Toolface	Offset Wellbore Centre		Between Centres	Between Ellipses	Minimum Separation	Separation Factor			
(ft)	(ft)	(ft)	(ft)	(ft)	(ft)	(°)	+N/-S (ft)	+E/-W (ft)	(ft)	(ft)	(ft)				
4,900.0	4,862.7	4,843.7	4,843.7	15.4	96.9	163.75	-175.6	-109.8	429.1	320.5	108.56	3.952			
5,000.0	4,962.7	4,943.7	4,943.7	15.6	98.9	163.88	-175.6	-109.8	432.0	321.2	110.79	3.899			
5,037.3	5,000.0	4,981.0	4,981.0	15.6	99.6	-19.47	-175.6	-109.8	432.2	320.6	111.59	3.873			
5,100.0	5,062.7	5,043.7	5,043.7	15.7	100.9	-19.47	-175.6	-109.8	432.2	319.3	112.96	3.826			
5,178.9	5,141.6	5,122.6	5,122.6	15.8	102.5	-19.47	-175.6	-109.8	432.2	317.6	114.66	3.769			
5,200.0	5,162.7	5,143.7	5,143.7	15.8	102.9	-19.47	-175.6	-109.8	432.2	317.1	115.12	3.754			
5,278.9	5,241.6	5,222.6	5,222.6	15.9	104.5	-19.47	-175.6	-109.8	432.2	315.4	116.82	3.700			
5,300.0	5,262.7	5,243.7	5,243.7	16.0	104.9	-19.47	-175.6	-109.8	432.2	314.9	117.28	3.685			
5,378.9	5,341.6	5,322.6	5,322.6	16.1	106.5	-19.47	-175.6	-109.8	432.2	313.2	118.99	3.632			
5,400.0	5,362.7	5,343.7	5,343.7	16.1	106.9	-19.47	-175.6	-109.8	432.2	312.8	119.45	3.619			
5,478.9	5,441.6	5,422.6	5,422.6	16.2	108.5	-19.47	-175.6	-109.8	432.2	311.1	121.15	3.568			
5,500.0	5,462.7	5,443.7	5,443.7	16.2	108.9	-19.47	-175.6	-109.8	432.2	310.6	121.61	3.554			
5,578.9	5,541.6	5,522.6	5,522.6	16.3	110.5	-19.47	-175.6	-109.8	432.2	308.9	123.32	3.505			
5,600.0	5,562.7	5,543.7	5,543.7	16.3	110.9	-19.47	-175.6	-109.8	432.2	308.4	123.78	3.492			
5,678.9	5,641.6	5,622.6	5,622.6	16.4	112.5	-19.47	-175.6	-109.8	432.2	306.7	125.49	3.444			
5,700.0	5,662.7	5,643.7	5,643.7	16.5	112.9	-19.47	-175.6	-109.8	432.2	306.3	125.95	3.432			
5,778.9	5,741.6	5,722.6	5,722.6	16.6	114.5	-19.47	-175.6	-109.8	432.2	304.6	127.66	3.386			
5,800.0	5,762.7	5,743.7	5,743.7	16.6	114.9	-19.47	-175.6	-109.8	432.2	304.1	128.12	3.374			
5,878.9	5,841.6	5,822.6	5,822.6	16.7	116.5	-19.47	-175.6	-109.8	432.2	302.4	129.83	3.329			
5,900.0	5,862.7	5,843.7	5,843.7	16.7	116.9	-19.47	-175.6	-109.8	432.2	301.9	130.29	3.317			
5,978.9	5,941.6	5,922.6	5,922.6	16.8	118.5	-19.47	-175.6	-109.8	432.2	300.2	132.00	3.274			
6,000.0	5,962.7	5,943.7	5,943.7	16.9	118.9	-19.47	-175.6	-109.8	432.2	299.8	132.46	3.263			
6,078.9	6,041.6	6,022.6	6,022.6	17.0	120.5	-19.47	-175.6	-109.8	432.2	298.0	134.18	3.221			
6,100.0	6,062.7	6,043.7	6,043.7	17.0	120.9	-19.47	-175.6	-109.8	432.2	297.6	134.64	3.210			
6,171.9	6,134.5	6,115.5	6,115.5	17.1	122.3	-19.47	-175.6	-109.8	432.2	296.0	136.20	3.173			
6,191.1	6,153.8	6,134.8	6,134.8	17.1	122.7	-19.47	-175.6	-109.8	432.2	295.6	136.62	3.164			
6,200.0	6,162.7	6,143.7	6,143.7	17.2	122.9	-19.35	-175.6	-109.8	432.2	295.4	136.80	3.159			
6,250.0	6,212.6	6,193.6	6,193.6	17.2	123.9	-19.51	-175.6	-109.8	429.9	292.5	137.42	3.129			
6,300.0	6,262.3	6,243.3	6,243.3	17.2	124.9	-19.92	-175.6	-109.8	424.4	287.0	137.45	3.088			
6,350.0	6,311.4	6,292.4	6,292.4	17.2	125.8	-20.61	-175.6	-109.8	415.7	278.8	136.91	3.036			
6,400.0	6,359.7	6,340.7	6,340.7	17.2	126.8	-21.60	-175.6	-109.8	403.8	268.0	135.82	2.973			
6,450.0	6,407.1	6,388.1	6,388.1	17.1	127.8	-22.94	-175.6	-109.8	388.9	254.6	134.27	2.896			
6,500.0	6,453.2	6,434.2	6,434.2	17.0	128.7	-24.72	-175.6	-109.8	371.0	238.6	132.36	2.803			
6,550.0	6,497.9	6,478.9	6,478.9	17.0	129.6	-27.04	-175.6	-109.8	350.4	220.1	130.29	2.689			
6,600.0	6,540.8	6,521.8	6,521.8	16.8	130.4	-30.04	-175.6	-109.8	327.2	198.8	128.38	2.549			
6,650.0	6,581.9	6,562.9	6,562.9	16.7	131.3	-33.90	-175.6	-109.8	301.9	174.8	127.08	2.375			
6,700.0	6,620.9	6,601.9	6,601.9	16.6	132.0	-38.85	-175.6	-109.8	274.8	147.7	127.03	2.163			
6,750.0	6,657.7	6,638.7	6,638.7	16.5	132.8	-45.12	-175.6	-109.8	246.4	117.5	128.94	1.911			
6,800.0	6,691.9	6,672.9	6,672.9	16.4	133.5	-52.88	-175.6	-109.8	217.9	84.6	133.23	1.635			
6,850.0	6,723.6	6,704.6	6,704.6	16.3	134.1	-62.02	-175.6	-109.8	190.4	51.0	139.41	1.366 Level 3			
6,900.0	6,752.5	6,733.5	6,733.5	16.3	134.7	-72.00	-175.6	-109.8	166.3	20.6	145.78	1.141 Level 2			
6,950.0	6,778.4	6,759.4	6,759.4	16.3	135.2	-81.83	-175.6	-109.8	149.2	-1.1	150.26	0.993 Level 1			
6,997.3	6,800.2	6,781.2	6,781.2	16.3	135.6	-90.00	-175.6	-109.8	143.2	-8.7	151.90	0.942 Level 1			
7,000.0	6,801.4	6,782.4	6,782.4	16.3	135.6	-90.41	-175.6	-109.8	143.2	-8.7	151.92	0.942 Level 1, ES, SF			
7,050.0	6,821.1	6,802.1	6,802.1	16.3	136.0	-96.99	-175.6	-109.8	151.1	-0.3	151.42	0.998 Level 1			
7,100.0	6,837.6	6,818.6	6,818.6	16.4	136.4	-101.22	-175.6	-109.8	172.1	21.9	150.22	1.146 Level 2			
7,150.0	6,850.8	6,831.8	6,831.8	16.6	136.6	-103.00	-175.6	-109.8	202.9	53.3	149.60	1.356 Level 3			
7,200.0	6,860.6	6,841.6	6,841.6	16.8	136.8	-102.26	-175.6	-109.8	240.1	89.8	150.30	1.598			
7,250.0	6,866.9	6,847.9	6,847.9	17.0	137.0	-98.87	-175.6	-109.8	281.5	129.3	152.21	1.849			
7,300.0	6,869.8	6,850.8	6,850.8	17.3	137.0	-92.63	-175.6	-109.8	325.4	171.3	154.16	2.111			
7,316.1	6,870.0	6,851.0	6,851.0	17.4	137.0	-90.00	-175.6	-109.8	340.0	185.6	154.42	2.202			
7,400.0	6,870.0	6,851.0	6,851.0	18.0	137.0	-90.00	-175.6	-109.8	417.6	262.5	155.03	2.694			

CC - Min centre to center distance or convergent point, SF - min separation factor, ES - min ellipse separation

Company:	Synergy Resources	Local Co-ordinate Reference:	Well SRC Evans P-26-23-14NHZ
Project:	SEC.26-T5N-R66W	TVD Reference:	WELL @ 4762.0ft (RKB - 15')
Reference Site:	SRC Evans Center Pad Sec.26-T5N-R66W	MD Reference:	WELL @ 4762.0ft (RKB - 15')
Site Error:	0.0ft	North Reference:	True
Reference Well:	SRC Evans P-26-23-14NHZ	Survey Calculation Method:	Minimum Curvature
Well Error:	0.0ft	Output errors are at	2.00 sigma
Reference Wellbore	Wellbore #1	Database:	Landmark
Reference Design:	Plan #1 (10-27-14)	Offset TVD Reference:	Offset Datum

Offset Design Existing Wells Sec.26-T5N-R66W - Rhoadarmer 1-26B (Exist) - Wellbore #1 - Wellbore #1												Offset Site Error:	0.0 ft
Survey Program: 7798-UNKNOWN												Offset Well Error:	0.0 ft
Reference	Offset	Semi Major Axis			Distance								Warning
Measured Depth (ft)	Vertical Depth (ft)	Measured Depth (ft)	Vertical Depth (ft)	Reference (ft)	Offset (ft)	Highside Toolface (°)	Offset Wellbore Centre +N/-S (ft)	+E/-W (ft)	Between Centres (ft)	Between Ellipses (ft)	Minimum Separation (ft)	Separation Factor	
7,500.0	6,870.0	6,851.0	6,851.0	18.9	137.0	-90.00	-175.6	-109.8	512.7	356.7	155.90	3.288	
7,600.0	6,870.0	6,851.0	6,851.0	19.9	137.0	-90.00	-175.6	-109.8	609.3	452.4	156.93	3.883	
7,700.0	6,870.0	6,851.0	6,851.0	21.1	137.0	-90.00	-175.6	-109.8	706.9	548.8	158.07	4.472	

Company:	Synergy Resources	Local Co-ordinate Reference:	Well SRC Evans P-26-23-14NHZ
Project:	SEC.26-T5N-R66W	TVD Reference:	WELL @ 4762.0ft (RKB - 15')
Reference Site:	SRC Evans Center Pad Sec.26-T5N-R66W	MD Reference:	WELL @ 4762.0ft (RKB - 15')
Site Error:	0.0ft	North Reference:	True
Reference Well:	SRC Evans P-26-23-14NHZ	Survey Calculation Method:	Minimum Curvature
Well Error:	0.0ft	Output errors are at	2.00 sigma
Reference Wellbore	Wellbore #1	Database:	Landmark
Reference Design:	Plan #1 (10-27-14)	Offset TVD Reference:	Offset Datum

Offset Design Existing Wells Sec.26-T5N-R66W - Rhoadarmer 2-26 (Exist) - Wellbore #1 - Wellbore #1												Offset Site Error:	0.0 ft
Survey Program: 7352-UNKNOWN												Offset Well Error:	0.0 ft
Reference	Offset	Semi Major Axis		Distance									
Measured Depth (ft)	Vertical Depth (ft)	Measured Depth (ft)	Vertical Depth (ft)	Reference (ft)	Offset (ft)	Highside Toolface (°)	Offset Wellbore Centre +N/-S (ft)	+E/-W (ft)	Between Centres (ft)	Between Ellipses (ft)	Minimum Separation (ft)	Separation Factor	Warning
8,100.0	6,870.0	6,881.0	6,881.0	26.6	137.6	-90.00	1,624.1	-243.5	758.5	594.3	164.18	4.620	
8,200.0	6,870.0	6,881.0	6,881.0	28.1	137.6	-90.00	1,624.1	-243.5	666.2	500.4	165.72	4.020	
8,300.0	6,870.0	6,881.0	6,881.0	29.7	137.6	-90.00	1,624.1	-243.5	576.4	409.1	167.30	3.445	
8,400.0	6,870.0	6,881.0	6,881.0	31.3	137.6	-90.00	1,624.1	-243.5	490.6	321.7	168.92	2.904	
8,500.0	6,870.0	6,881.0	6,881.0	33.0	137.6	-90.00	1,624.1	-243.5	411.2	240.7	170.57	2.411	
8,600.0	6,870.0	6,881.0	6,881.0	34.6	137.6	-90.00	1,624.1	-243.5	342.9	170.6	172.25	1.991	
8,700.0	6,870.0	6,881.0	6,881.0	36.3	137.6	-90.00	1,624.1	-243.5	293.3	119.3	173.95	1.686	
8,800.0	6,870.0	6,881.0	6,881.0	38.1	137.6	-90.00	1,624.1	-243.5	272.9	97.2	175.68	1.553	
8,807.7	6,870.0	6,881.0	6,881.0	38.2	137.6	-90.00	1,624.1	-243.5	272.8	97.0	175.81	1.552	CC, ES, SF
8,900.0	6,870.0	6,881.0	6,881.0	39.8	137.6	-90.00	1,624.1	-243.5	288.0	110.5	177.42	1.623	
9,000.0	6,870.0	6,881.0	6,881.0	41.6	137.6	-90.00	1,624.1	-243.5	333.7	154.6	179.18	1.863	
9,100.0	6,870.0	6,881.0	6,881.0	43.3	137.6	-90.00	1,624.1	-243.5	399.8	218.8	180.95	2.209	
9,200.0	6,870.0	6,881.0	6,881.0	45.1	137.6	-90.00	1,624.1	-243.5	477.8	295.1	182.74	2.615	
9,300.0	6,870.0	6,881.0	6,881.0	46.9	137.6	-90.00	1,624.1	-243.5	562.8	378.3	184.53	3.050	
9,400.0	6,870.0	6,881.0	6,881.0	48.7	137.6	-90.00	1,624.1	-243.5	652.1	465.7	186.34	3.499	
9,500.0	6,870.0	6,881.0	6,881.0	50.5	137.6	-90.00	1,624.1	-243.5	744.1	555.9	188.15	3.955	

Company:	Synergy Resources	Local Co-ordinate Reference:	Well SRC Evans P-26-23-14NHZ
Project:	SEC.26-T5N-R66W	TVD Reference:	WELL @ 4762.0ft (RKB - 15')
Reference Site:	SRC Evans Center Pad Sec.26-T5N-R66W	MD Reference:	WELL @ 4762.0ft (RKB - 15')
Site Error:	0.0ft	North Reference:	True
Reference Well:	SRC Evans P-26-23-14NHZ	Survey Calculation Method:	Minimum Curvature
Well Error:	0.0ft	Output errors are at	2.00 sigma
Reference Wellbore	Wellbore #1	Database:	Landmark
Reference Design:	Plan #1 (10-27-14)	Offset TVD Reference:	Offset Datum

Offset Design		Existing Wells Sec.26-T5N-R66W - UPRC 23-7H6 (Exist) - Wellbore #1 - Wellbore #1											Offset Site Error:		0.0 ft	
Survey Program: 7463-UNKNOWN														Offset Well Error:		0.0 ft
Reference		Offset		Semi Major Axis			Distance							Warning		
Measured Depth (ft)	Vertical Depth (ft)	Measured Depth (ft)	Vertical Depth (ft)	Reference (ft)	Offset (ft)	Highside Toolface (°)	Offset Wellbore Centre +N/-S (ft)	+E/-W (ft)	Between Centres (ft)	Between Ellipses (ft)	Minimum Separation (ft)	Separation Factor				
11,700.0	6,870.0	6,968.0	6,968.0	91.5	139.4	-90.00	5,252.6	-68.0	741.2	510.3	230.91	3.210				
11,800.0	6,870.0	6,968.0	6,968.0	93.4	139.4	-90.00	5,252.6	-68.0	642.1	409.3	232.80	2.758				
11,900.0	6,870.0	6,968.0	6,968.0	95.3	139.4	-90.00	5,252.6	-68.0	543.2	308.5	234.69	2.315				
12,000.0	6,870.0	6,968.0	6,968.0	97.2	139.4	-90.00	5,252.6	-68.0	444.9	208.3	236.58	1.880				
12,100.0	6,870.0	6,968.0	6,968.0	99.1	139.4	-90.00	5,252.6	-68.0	347.5	109.0	238.48	1.457 Level 3				
12,200.0	6,870.0	6,968.0	6,968.0	101.0	139.4	-90.00	5,252.6	-68.0	252.1	11.7	240.37	1.049 Level 2				
12,300.0	6,870.0	6,968.0	6,968.0	102.9	139.4	-90.00	5,252.6	-68.0	162.4	-79.8	242.27	0.670 Level 1				
12,400.0	6,870.0	6,968.0	6,968.0	104.8	139.4	-90.00	5,252.6	-68.0	96.0	-148.2	244.16	0.393 Level 1				
12,435.8	6,870.0	6,968.0	6,968.0	105.5	139.4	-90.00	5,252.6	-68.0	89.0	-155.8	244.85	0.363 Level 1, CC, ES, SF				
12,500.0	6,870.0	6,968.0	6,968.0	106.7	139.4	-90.00	5,252.6	-68.0	109.7	-136.4	246.06	0.446 Level 1				
12,600.0	6,870.0	6,968.0	6,968.0	108.6	139.4	-90.00	5,252.6	-68.0	186.7	-61.3	247.96	0.753 Level 1				
12,700.0	6,870.0	6,968.0	6,968.0	110.5	139.4	-90.00	5,252.6	-68.0	278.7	28.9	249.86	1.116 Level 2				
12,800.0	6,870.0	6,968.0	6,968.0	112.4	139.4	-90.00	5,252.6	-68.0	374.8	123.1	251.76	1.489 Level 3				
12,900.0	6,870.0	6,968.0	6,968.0	114.3	139.4	-90.00	5,252.6	-68.0	472.6	218.9	253.66	1.863				
13,000.0	6,870.0	6,968.0	6,968.0	116.2	139.4	-90.00	5,252.6	-68.0	571.1	315.5	255.57	2.235				
13,100.0	6,870.0	6,968.0	6,968.0	118.1	139.4	-90.00	5,252.6	-68.0	670.1	412.6	257.47	2.603				
13,200.0	6,870.0	6,968.0	6,968.0	120.0	139.4	-90.00	5,252.6	-68.0	769.3	509.9	259.37	2.966				

Company:	Synergy Resources	Local Co-ordinate Reference:	Well SRC Evans P-26-23-14NHZ
Project:	SEC.26-T5N-R66W	TVD Reference:	WELL @ 4762.0ft (RKB - 15')
Reference Site:	SRC Evans Center Pad Sec.26-T5N-R66W	MD Reference:	WELL @ 4762.0ft (RKB - 15')
Site Error:	0.0ft	North Reference:	True
Reference Well:	SRC Evans P-26-23-14NHZ	Survey Calculation Method:	Minimum Curvature
Well Error:	0.0ft	Output errors are at	2.00 sigma
Reference Wellbore	Wellbore #1	Database:	Landmark
Reference Design:	Plan #1 (10-27-14)	Offset TVD Reference:	Offset Datum

Offset Design Existing Wells Sec.26-T5N-R66W - UPV 23-1H6 (P&A) - Wellbore #1 - Wellbore #1												Offset Site Error:	0.0 ft
Survey Program: 7925-UNKNOWN												Offset Well Error:	0.0 ft
Reference	Offset	Semi Major Axis		Distance									
Measured Depth (ft)	Vertical Depth (ft)	Measured Depth (ft)	Vertical Depth (ft)	Reference (ft)	Offset (ft)	Highside Toolface (°)	Offset Wellbore Centre +N/-S (ft)	+E/-W (ft)	Between Centres (ft)	Between Ellipses (ft)	Minimum Separation (ft)	Separation Factor	Warning
11,800.0	6,870.0	6,968.0	6,968.0	93.4	139.4	-90.00	5,314.6	-79.1	705.0	472.2	232.80	3.028	
11,900.0	6,870.0	6,968.0	6,968.0	95.3	139.4	-90.00	5,314.6	-79.1	606.1	371.4	234.69	2.583	
12,000.0	6,870.0	6,968.0	6,968.0	97.2	139.4	-90.00	5,314.6	-79.1	507.8	271.2	236.58	2.146	
12,100.0	6,870.0	6,968.0	6,968.0	99.1	139.4	-90.00	5,314.6	-79.1	410.2	171.7	238.48	1.720	
12,200.0	6,870.0	6,968.0	6,968.0	101.0	139.4	-90.00	5,314.6	-79.1	314.2	73.8	240.37	1.307 Level 3	
12,300.0	6,870.0	6,968.0	6,968.0	102.9	139.4	-90.00	5,314.6	-79.1	221.7	-20.6	242.27	0.915 Level 1	
12,400.0	6,870.0	6,968.0	6,968.0	104.8	139.4	-90.00	5,314.6	-79.1	139.9	-104.3	244.16	0.573 Level 1	
12,497.8	6,870.0	6,968.0	6,968.0	106.7	139.4	-90.00	5,314.6	-79.1	100.0	-146.0	246.02	0.406 Level 1, CC, SF	
12,500.0	6,870.0	6,968.0	6,968.0	106.7	139.4	-90.00	5,314.6	-79.1	100.0	-146.0	246.06	0.407 Level 1, ES	
12,600.0	6,870.0	6,968.0	6,968.0	108.6	139.4	-90.00	5,314.6	-79.1	143.0	-105.0	247.96	0.577 Level 1	
12,700.0	6,870.0	6,968.0	6,968.0	110.5	139.4	-90.00	5,314.6	-79.1	225.6	-24.3	249.86	0.903 Level 1	
12,800.0	6,870.0	6,968.0	6,968.0	112.4	139.4	-90.00	5,314.6	-79.1	318.3	66.5	251.76	1.264 Level 3	
12,900.0	6,870.0	6,968.0	6,968.0	114.3	139.4	-90.00	5,314.6	-79.1	414.4	160.8	253.66	1.634	
13,000.0	6,870.0	6,968.0	6,968.0	116.2	139.4	-90.00	5,314.6	-79.1	512.0	256.5	255.57	2.004	
13,100.0	6,870.0	6,968.0	6,968.0	118.1	139.4	-90.00	5,314.6	-79.1	610.4	353.0	257.47	2.371	
13,200.0	6,870.0	6,968.0	6,968.0	120.0	139.4	-90.00	5,314.6	-79.1	709.3	449.9	259.37	2.735	

Company:	Synergy Resources	Local Co-ordinate Reference:	Well SRC Evans P-26-23-14NHZ
Project:	SEC.26-T5N-R66W	TVD Reference:	WELL @ 4762.0ft (RKB - 15')
Reference Site:	SRC Evans Center Pad Sec.26-T5N-R66W	MD Reference:	WELL @ 4762.0ft (RKB - 15')
Site Error:	0.0ft	North Reference:	True
Reference Well:	SRC Evans P-26-23-14NHZ	Survey Calculation Method:	Minimum Curvature
Well Error:	0.0ft	Output errors are at	2.00 sigma
Reference Wellbore	Wellbore #1	Database:	Landmark
Reference Design:	Plan #1 (10-27-14)	Offset TVD Reference:	Offset Datum

Offset Design		Existing Wells Sec.26-T5N-R66W - UPV 23-2H6 (Exist) - Wellbore #1 - Wellbore #1											Offset Site Error:		0.0 ft	
Survey Program: 7787-UNKNOWN														Offset Well Error:		0.0 ft
Reference		Offset		Semi Major Axis			Distance							Warning		
Measured Depth (ft)	Vertical Depth (ft)	Measured Depth (ft)	Vertical Depth (ft)	Reference (ft)	Offset (ft)	Highside Toolface (°)	Offset Wellbore Centre +N/-S (ft)	+E/-W (ft)	Between Centres (ft)	Between Ellipses (ft)	Minimum Separation (ft)	Separation Factor				
11,800.0	6,870.0	6,968.0	6,968.0	93.4	139.4	-90.00	5,351.0	-81.9	741.4	508.6	232.80	3.185				
11,900.0	6,870.0	6,968.0	6,968.0	95.3	139.4	-90.00	5,351.0	-81.9	642.5	407.8	234.69	2.738				
12,000.0	6,870.0	6,968.0	6,968.0	97.2	139.4	-90.00	5,351.0	-81.9	544.0	307.5	236.58	2.300				
12,100.0	6,870.0	6,968.0	6,968.0	99.1	139.4	-90.00	5,351.0	-81.9	446.2	207.8	238.48	1.871				
12,200.0	6,870.0	6,968.0	6,968.0	101.0	139.4	-90.00	5,351.0	-81.9	349.7	109.3	240.37	1.455 Level 3				
12,300.0	6,870.0	6,968.0	6,968.0	102.9	139.4	-90.00	5,351.0	-81.9	255.8	13.5	242.27	1.056 Level 2				
12,400.0	6,870.0	6,968.0	6,968.0	104.8	139.4	-90.00	5,351.0	-81.9	169.0	-75.1	244.16	0.692 Level 1				
12,500.0	6,870.0	6,968.0	6,968.0	106.7	139.4	-90.00	5,351.0	-81.9	108.3	-137.8	246.06	0.440 Level 1				
12,534.3	6,870.0	6,968.0	6,968.0	107.4	139.4	-90.00	5,351.0	-81.9	102.7	-144.0	246.71	0.416 Level 1, CC, ES, SF				
12,600.0	6,870.0	6,968.0	6,968.0	108.6	139.4	-90.00	5,351.0	-81.9	121.9	-126.0	247.96	0.492 Level 1				
12,700.0	6,870.0	6,968.0	6,968.0	110.5	139.4	-90.00	5,351.0	-81.9	195.0	-54.9	249.86	0.780 Level 1				
12,800.0	6,870.0	6,968.0	6,968.0	112.4	139.4	-90.00	5,351.0	-81.9	284.9	33.1	251.76	1.132 Level 2				
12,900.0	6,870.0	6,968.0	6,968.0	114.3	139.4	-90.00	5,351.0	-81.9	379.9	126.2	253.66	1.498 Level 3				
13,000.0	6,870.0	6,968.0	6,968.0	116.2	139.4	-90.00	5,351.0	-81.9	476.9	221.4	255.57	1.866				
13,100.0	6,870.0	6,968.0	6,968.0	118.1	139.4	-90.00	5,351.0	-81.9	575.0	317.5	257.47	2.233				
13,200.0	6,870.0	6,968.0	6,968.0	120.0	139.4	-90.00	5,351.0	-81.9	673.6	414.2	259.37	2.597				
13,300.0	6,870.0	6,968.0	6,968.0	121.9	139.4	-90.00	5,351.0	-81.9	772.6	511.3	261.27	2.957				

Company:	Synergy Resources	Local Co-ordinate Reference:	Well SRC Evans P-26-23-14NHZ
Project:	SEC.26-T5N-R66W	TVD Reference:	WELL @ 4762.0ft (RKB - 15')
Reference Site:	SRC Evans Center Pad Sec.26-T5N-R66W	MD Reference:	WELL @ 4762.0ft (RKB - 15')
Site Error:	0.0ft	North Reference:	True
Reference Well:	SRC Evans P-26-23-14NHZ	Survey Calculation Method:	Minimum Curvature
Well Error:	0.0ft	Output errors are at	2.00 sigma
Reference Wellbore	Wellbore #1	Database:	Landmark
Reference Design:	Plan #1 (10-27-14)	Offset TVD Reference:	Offset Datum

Offset Design Existing Wells Sec.26-T5N-R66W - UPV 23-8H6 (Exist) - Wellbore #1 - Wellbore #1													Offset Site Error:	0.0 ft
Survey Program: 7879-UNKNOWN													Offset Well Error:	0.0 ft
Reference		Offset		Semi Major Axis			Distance							Warning
Measured Depth	Vertical Depth	Measured Depth	Vertical Depth	Reference	Offset	Highside Toolface	Offset Wellbore Centre		Between Centres	Between Ellipses	Minimum Separation	Separation Factor		
(ft)	(ft)	(ft)	(ft)	(ft)	(ft)	(°)	+N/-S (ft)	+E/-W (ft)	(ft)	(ft)	(ft)			
11,700.0	6,870.0	6,968.0	6,968.0	91.5	139.4	-90.00	5,289.1	-70.8	777.7	546.8	230.91	3.368		
11,800.0	6,870.0	6,968.0	6,968.0	93.4	139.4	-90.00	5,289.1	-70.8	678.5	445.7	232.80	2.915		
11,900.0	6,870.0	6,968.0	6,968.0	95.3	139.4	-90.00	5,289.1	-70.8	579.6	344.9	234.69	2.470		
12,000.0	6,870.0	6,968.0	6,968.0	97.2	139.4	-90.00	5,289.1	-70.8	481.1	244.5	236.58	2.034		
12,100.0	6,870.0	6,968.0	6,968.0	99.1	139.4	-90.00	5,289.1	-70.8	383.4	145.0	238.48	1.608		
12,200.0	6,870.0	6,968.0	6,968.0	101.0	139.4	-90.00	5,289.1	-70.8	287.3	47.0	240.37	1.195	Level 2	
12,300.0	6,870.0	6,968.0	6,968.0	102.9	139.4	-90.00	5,289.1	-70.8	195.2	-47.1	242.27	0.806	Level 1	
12,400.0	6,870.0	6,968.0	6,968.0	104.8	139.4	-90.00	5,289.1	-70.8	116.8	-127.4	244.16	0.478	Level 1	
12,472.3	6,870.0	6,968.0	6,968.0	106.2	139.4	-90.00	5,289.1	-70.8	91.7	-153.8	245.54	0.373	Level 1, CC, ES, SF	
12,500.0	6,870.0	6,968.0	6,968.0	106.7	139.4	-90.00	5,289.1	-70.8	95.8	-150.3	246.06	0.389	Level 1	
12,600.0	6,870.0	6,968.0	6,968.0	108.6	139.4	-90.00	5,289.1	-70.8	157.2	-90.8	247.96	0.634	Level 1	
12,700.0	6,870.0	6,968.0	6,968.0	110.5	139.4	-90.00	5,289.1	-70.8	245.5	-4.4	249.86	0.982	Level 1	
12,800.0	6,870.0	6,968.0	6,968.0	112.4	139.4	-90.00	5,289.1	-70.8	340.3	88.5	251.76	1.352	Level 3	
12,900.0	6,870.0	6,968.0	6,968.0	114.3	139.4	-90.00	5,289.1	-70.8	437.4	183.8	253.66	1.724		
13,000.0	6,870.0	6,968.0	6,968.0	116.2	139.4	-90.00	5,289.1	-70.8	535.6	280.0	255.57	2.096		
13,100.0	6,870.0	6,968.0	6,968.0	118.1	139.4	-90.00	5,289.1	-70.8	634.4	376.9	257.47	2.464		
13,200.0	6,870.0	6,968.0	6,968.0	120.0	139.4	-90.00	5,289.1	-70.8	733.4	474.1	259.37	2.828		

Company:	Synergy Resources	Local Co-ordinate Reference:	Well SRC Evans P-26-23-14NHZ
Project:	SEC.26-T5N-R66W	TVD Reference:	WELL @ 4762.0ft (RKB - 15')
Reference Site:	SRC Evans Center Pad Sec.26-T5N-R66W	MD Reference:	WELL @ 4762.0ft (RKB - 15')
Site Error:	0.0ft	North Reference:	True
Reference Well:	SRC Evans P-26-23-14NHZ	Survey Calculation Method:	Minimum Curvature
Well Error:	0.0ft	Output errors are at	2.00 sigma
Reference Wellbore	Wellbore #1	Database:	Landmark
Reference Design:	Plan #1 (10-27-14)	Offset TVD Reference:	Offset Datum

Offset Design													Offset Site Error:	0.0 ft
Survey Program: 0-MWD													Offset Well Error:	0.0 ft
Reference		Offset		Semi Major Axis			Distance							Warning
Measured Depth (ft)	Vertical Depth (ft)	Measured Depth (ft)	Vertical Depth (ft)	Reference (ft)	Offset (ft)	Highside Toolface (°)	Offset Wellbore Centre +N/-S (ft)	+E/-W (ft)	Between Centres (ft)	Between Ellipses (ft)	Minimum Separation (ft)	Separation Factor		
0.0	0.0	0.0	0.0	0.0	0.0	0.00	22.6	0.0	22.6					
100.0	100.0	100.0	100.0	0.1	0.1	0.00	22.6	0.0	22.6	22.4	0.22	100.474		
200.0	200.0	200.0	200.0	0.3	0.3	0.00	22.6	0.0	22.6	21.9	0.67	33.491 CC, ES		
300.0	300.0	300.0	300.0	0.5	0.6	-176.87	22.6	0.0	24.3	23.2	1.11	21.959		
400.0	399.8	399.8	399.8	0.8	0.8	-177.42	22.6	0.0	29.6	28.0	1.54	19.167		
500.0	499.5	500.6	500.6	1.0	1.0	-179.10	20.9	-0.7	36.7	34.7	1.96	18.714		
576.1	575.0	577.5	577.4	1.2	1.1	178.63	17.5	-2.0	42.3	40.0	2.27	18.628		
600.0	598.7	601.6	601.5	1.3	1.2	177.80	16.0	-2.6	44.0	41.7	2.37	18.601		
700.0	697.9	702.9	702.3	1.6	1.4	173.64	7.7	-5.9	49.4	46.6	2.80	17.656		
800.0	797.0	803.2	801.9	1.9	1.7	168.72	-2.9	-10.2	52.9	49.6	3.27	16.177		
900.0	896.1	903.0	901.1	2.2	1.9	164.34	-13.7	-14.5	56.6	52.8	3.77	15.001		
1,000.0	995.3	1,002.8	1,000.3	2.6	2.2	160.52	-24.4	-18.8	60.6	56.3	4.30	14.083		
1,100.0	1,094.4	1,102.7	1,099.5	2.9	2.5	157.18	-35.2	-23.1	64.8	59.9	4.85	13.355		
1,200.0	1,193.6	1,202.5	1,198.6	3.2	2.8	154.26	-45.9	-27.4	69.2	63.8	5.42	12.768		
1,300.0	1,292.7	1,302.4	1,297.8	3.6	3.1	151.69	-56.6	-31.7	73.7	67.7	6.00	12.290		
1,400.0	1,391.8	1,402.2	1,397.0	3.9	3.4	149.42	-67.4	-35.9	78.4	71.8	6.59	11.896		
1,500.0	1,491.0	1,502.1	1,496.1	4.2	3.7	147.42	-78.1	-40.2	83.2	76.0	7.19	11.568		
1,600.0	1,590.1	1,601.9	1,595.3	4.6	4.0	145.63	-88.9	-44.5	88.1	80.3	7.80	11.291		
1,700.0	1,689.2	1,701.8	1,694.5	4.9	4.4	144.03	-99.6	-48.8	93.1	84.7	8.42	11.057		
1,800.0	1,788.4	1,801.6	1,793.7	5.2	4.7	142.60	-110.4	-53.1	98.1	89.1	9.04	10.856		
1,900.0	1,887.5	1,901.5	1,892.8	5.6	5.0	141.30	-121.1	-57.4	103.2	93.5	9.66	10.682		
2,000.0	1,986.7	2,001.3	1,992.0	5.9	5.3	140.13	-131.9	-61.7	108.3	98.0	10.29	10.532		
2,100.0	2,085.8	2,101.1	2,091.2	6.3	5.6	139.06	-142.6	-66.0	113.5	102.6	10.91	10.400		
2,200.0	2,184.9	2,201.0	2,190.3	6.6	5.9	138.09	-153.4	-70.3	118.7	107.2	11.54	10.284		
2,300.0	2,284.1	2,300.8	2,289.5	6.9	6.2	137.20	-164.1	-74.6	123.9	111.8	12.17	10.181		
2,400.0	2,383.2	2,400.7	2,388.7	7.3	6.6	136.38	-174.9	-78.9	129.2	116.4	12.81	10.089		
2,500.0	2,482.4	2,500.5	2,487.9	7.6	6.9	135.63	-185.6	-83.2	134.5	121.1	13.44	10.007		
2,600.0	2,581.5	2,600.4	2,587.0	8.0	7.2	134.93	-196.3	-87.5	139.8	125.8	14.08	9.934		
2,700.0	2,680.6	2,700.2	2,686.2	8.3	7.5	134.29	-207.1	-91.8	145.2	130.4	14.71	9.867		
2,800.0	2,779.8	2,800.1	2,785.4	8.6	7.8	133.69	-217.8	-96.1	150.5	135.2	15.35	9.807		
2,900.0	2,878.9	2,899.9	2,884.5	9.0	8.1	133.13	-228.6	-100.3	155.9	139.9	15.98	9.752		
3,000.0	2,978.1	2,999.7	2,983.7	9.3	8.5	132.61	-239.3	-104.6	161.3	144.6	16.62	9.702		
3,100.0	3,077.2	3,099.6	3,082.9	9.6	8.8	132.12	-250.1	-108.9	166.7	149.4	17.26	9.656		
3,200.0	3,176.3	3,199.4	3,182.1	10.0	9.1	131.66	-260.8	-113.2	172.1	154.2	17.90	9.614		
3,300.0	3,275.5	3,299.3	3,281.2	10.3	9.4	131.23	-271.6	-117.5	177.5	158.9	18.53	9.575		
3,400.0	3,374.6	3,399.1	3,380.4	10.7	9.7	130.83	-282.3	-121.8	182.9	163.7	19.17	9.539		
3,500.0	3,473.8	3,499.0	3,479.6	11.0	10.0	130.45	-293.1	-126.1	188.3	168.5	19.81	9.506		
3,600.0	3,572.9	3,598.8	3,578.8	11.3	10.4	130.09	-303.8	-130.4	193.8	173.3	20.45	9.475		
3,700.0	3,672.0	3,698.7	3,677.9	11.7	10.7	129.75	-314.5	-134.7	199.2	178.1	21.09	9.446		
3,800.0	3,771.2	3,798.5	3,777.1	12.0	11.0	129.43	-325.3	-139.0	204.7	182.9	21.73	9.420		
3,900.0	3,870.3	3,898.3	3,876.3	12.4	11.3	129.12	-336.0	-143.3	210.1	187.8	22.37	9.395		
4,000.0	3,969.5	3,998.2	3,975.4	12.7	11.6	128.83	-346.8	-147.6	215.6	192.6	23.01	9.371		
4,100.0	4,068.6	4,098.0	4,074.6	13.0	11.9	128.56	-357.5	-151.9	221.1	197.4	23.65	9.349		
4,200.0	4,167.7	4,197.9	4,173.8	13.4	12.3	128.30	-368.3	-156.2	226.5	202.3	24.28	9.328		
4,300.0	4,266.9	4,297.7	4,273.0	13.7	12.6	128.05	-379.0	-160.5	232.0	207.1	24.92	9.309		
4,400.0	4,366.0	4,397.6	4,372.1	14.1	12.9	127.81	-389.8	-164.7	237.5	211.9	25.56	9.291		
4,500.0	4,465.1	4,497.4	4,471.3	14.4	13.2	127.58	-400.5	-169.0	243.0	216.8	26.20	9.273		
4,600.0	4,564.3	4,597.3	4,570.5	14.7	13.5	127.37	-411.3	-173.3	248.5	221.6	26.84	9.257		
4,661.2	4,625.0	4,658.4	4,631.2	14.9	13.7	127.24	-417.8	-176.0	251.8	224.6	27.23	9.247		
4,700.0	4,663.5	4,697.1	4,669.6	15.1	13.9	127.14	-422.0	-177.6	253.8	226.3	27.47	9.240		
4,800.0	4,763.0	4,797.0	4,768.8	15.3	14.2	126.45	-432.8	-181.9	257.5	229.4	28.05	9.180		
4,900.0	4,862.7	4,896.8	4,868.0	15.4	14.5	125.13	-443.5	-186.2	259.1	230.5	28.64	9.047		

CC - Min centre to center distance or convergent point, SF - min separation factor, ES - min ellipse separation

SRC Evans Center Pad Sec.26-T5N-R66W - SRC Evans 23-26-23-14CHZ - Wellbore #1 - Plan #1 (10-													Offset Site Error:	0.0 ft
Survey Program: 0-MWD													Offset Well Error:	0.0 ft
Reference		Offset		Semi Major Axis			Distance							
Measured Depth (ft)	Vertical Depth (ft)	Measured Depth (ft)	Vertical Depth (ft)	Reference (ft)	Offset (ft)	Highside Toolface (°)	Offset Wellbore Centre +N/-S (ft)	+E/-W (ft)	Between Centres (ft)	Between Ellipses (ft)	Minimum Separation (ft)	Separation Factor	Warning	
5,000.0	4,962.7	4,996.4	4,966.9	15.6	14.8	123.16	-454.2	-190.5	259.0	229.8	29.25	8.855		
5,037.3	5,000.0	5,033.5	5,003.7	15.6	14.9	-61.12	-458.2	-192.1	258.6	229.1	29.48	8.771		
5,100.0	5,062.7	5,095.7	5,065.6	15.7	15.1	-62.71	-464.9	-194.8	257.8	227.9	29.88	8.626		
5,200.0	5,162.7	5,195.0	5,164.2	15.8	15.4	-65.26	-475.6	-199.0	256.9	226.4	30.49	8.427		
5,300.0	5,262.7	5,294.4	5,262.9	16.0	15.8	-67.83	-486.3	-203.3	256.6	225.5	31.07	8.257		
5,315.1	5,277.8	5,309.4	5,277.8	16.0	15.8	-68.22	-487.9	-204.0	256.6	225.4	31.16	8.234		
5,400.0	5,362.7	5,393.7	5,361.5	16.1	16.1	-70.40	-497.0	-207.6	256.8	225.1	31.64	8.116		
5,500.0	5,462.7	5,493.0	5,460.2	16.2	16.4	-72.96	-507.7	-211.9	257.5	225.3	32.17	8.003		
5,600.0	5,562.7	5,592.4	5,558.9	16.3	16.7	-75.51	-518.4	-216.1	258.7	226.0	32.68	7.915		
5,700.0	5,662.7	5,691.7	5,657.5	16.5	17.0	-78.02	-529.0	-220.4	260.4	227.2	33.17	7.851		
5,800.0	5,762.7	5,791.0	5,756.2	16.6	17.3	-80.49	-539.7	-224.7	262.7	229.0	33.63	7.810		
5,900.0	5,862.7	5,890.3	5,854.8	16.7	17.7	-82.93	-550.4	-228.9	265.4	231.3	34.07	7.789		
6,000.0	5,962.7	5,989.7	5,953.5	16.9	18.0	-85.30	-561.1	-233.2	268.6	234.1	34.48	7.789		
6,100.0	6,062.7	6,091.7	6,055.0	17.0	18.2	-87.42	-570.9	-237.1	271.8	237.0	34.83	7.803		
6,191.1	6,153.8	6,185.7	6,148.7	17.1	18.4	-88.70	-576.9	-239.5	273.9	238.8	35.09	7.806		
6,200.0	6,162.7	6,194.9	6,157.9	17.2	18.4	-88.66	-577.3	-239.7	274.1	239.0	35.11	7.806		
6,250.0	6,212.6	6,246.4	6,209.4	17.2	18.5	-89.53	-579.3	-240.5	274.8	239.6	35.21	7.804		
6,300.0	6,262.3	6,297.8	6,260.8	17.2	18.6	-90.96	-580.4	-240.9	275.2	240.0	35.25	7.808		
6,350.0	6,311.4	6,348.4	6,311.4	17.2	18.7	-92.93	-580.6	-241.0	275.7	240.4	35.23	7.826		
6,400.0	6,359.7	6,396.8	6,359.7	17.2	18.7	-95.39	-580.6	-241.0	276.6	241.5	35.12	7.876		
6,450.0	6,407.1	6,444.1	6,407.1	17.1	18.8	-98.35	-580.6	-241.0	278.7	243.7	34.92	7.980		
6,500.0	6,453.2	6,490.2	6,453.2	17.0	18.9	-101.65	-580.6	-241.0	282.3	247.7	34.62	8.154		
6,550.0	6,497.9	6,536.8	6,499.7	17.0	18.9	-105.29	-580.4	-241.0	288.1	253.9	34.20	8.423		
6,600.0	6,540.8	6,588.1	6,550.9	16.8	19.0	-109.18	-577.5	-241.0	295.6	262.0	33.63	8.790		
6,650.0	6,581.9	6,641.4	6,603.8	16.7	19.0	-112.91	-570.5	-241.0	304.7	271.8	32.96	9.245		
6,700.0	6,620.9	6,697.1	6,658.3	16.6	18.9	-116.46	-559.0	-241.0	315.1	282.9	32.19	9.789		
6,750.0	6,657.7	6,755.2	6,714.1	16.5	18.9	-119.81	-542.6	-241.1	326.4	295.1	31.33	10.419		
6,800.0	6,691.9	6,816.2	6,770.9	16.4	18.8	-122.94	-520.6	-241.1	338.5	308.1	30.41	11.132		
6,850.0	6,723.6	6,880.2	6,828.3	16.3	18.7	-125.86	-492.3	-241.2	351.0	321.5	29.45	11.916		
6,900.0	6,752.5	6,947.6	6,885.8	16.3	18.6	-128.54	-457.2	-241.3	363.6	335.1	28.50	12.758		
6,950.0	6,778.4	7,018.5	6,942.4	16.3	18.4	-130.98	-414.6	-241.4	375.9	348.4	27.57	13.633		
7,000.0	6,801.4	7,093.0	6,997.0	16.3	18.2	-133.17	-363.9	-241.5	387.8	361.0	26.73	14.507		
7,050.0	6,821.1	7,171.3	7,048.5	16.3	18.0	-135.10	-304.9	-241.6	398.7	372.7	26.01	15.329		
7,100.0	6,837.6	7,253.3	7,095.1	16.4	17.9	-136.74	-237.5	-241.8	408.4	382.9	25.46	16.039		
7,150.0	6,850.8	7,338.8	7,135.2	16.6	17.8	-138.08	-162.1	-242.0	416.6	391.4	25.15	16.567		
7,200.0	6,860.6	7,427.2	7,166.9	16.8	17.8	-139.10	-79.7	-242.1	423.0	397.9	25.10	16.852		
7,250.0	6,866.9	7,518.0	7,188.6	17.0	18.0	-139.79	8.4	-242.3	427.4	402.0	25.35	16.858		
7,300.0	6,869.8	7,610.2	7,199.1	17.3	18.3	-140.13	99.9	-242.6	429.5	403.6	25.90	16.582		
7,316.1	6,870.0	7,640.0	7,200.0	17.4	18.5	-140.16	129.8	-242.6	429.7	403.6	26.14	16.437		
7,400.0	6,870.0	7,726.6	7,200.0	18.0	19.0	-140.16	216.3	-242.8	429.8	402.7	27.05	15.887		
7,500.0	6,870.0	7,826.6	7,200.0	18.9	19.8	-140.16	316.3	-243.1	429.8	401.5	28.31	15.181		
7,600.0	6,870.0	7,926.6	7,200.0	19.9	20.8	-140.16	416.3	-243.3	429.8	400.0	29.76	14.441		
7,700.0	6,870.0	8,026.6	7,200.0	21.1	21.9	-140.16	516.3	-243.5	429.8	398.4	31.38	13.696		
7,800.0	6,870.0	8,126.6	7,200.0	22.3	23.1	-140.16	616.3	-243.7	429.8	396.6	33.14	12.968		
7,900.0	6,870.0	8,226.6	7,200.0	23.7	24.4	-140.16	716.3	-244.0	429.8	394.7	35.02	12.271		
8,000.0	6,870.0	8,326.6	7,200.0	25.1	25.7	-140.16	816.3	-244.2	429.8	392.8	37.01	11.613		
8,100.0	6,870.0	8,426.6	7,200.0	26.6	27.2	-140.16	916.3	-244.4	429.8	390.7	39.08	10.997		
8,200.0	6,870.0	8,526.6	7,200.0	28.1	28.7	-140.16	1,016.3	-244.7	429.8	388.5	41.23	10.425		
8,300.0	6,870.0	8,626.6	7,200.0	29.7	30.2	-140.16	1,116.3	-244.9	429.8	386.3	43.43	9.895		
8,400.0	6,870.0	8,726.6	7,200.0	31.3	31.8	-140.16	1,216.3	-245.1	429.8	384.1	45.70	9.405		
8,500.0	6,870.0	8,826.6	7,200.0	33.0	33.4	-140.16	1,316.3	-245.3	429.8	381.8	48.01	8.952		
8,600.0	6,870.0	8,926.6	7,200.0	34.6	35.1	-140.16	1,416.3	-245.6	429.8	379.4	50.36	8.535		

Company:	Synergy Resources	Local Co-ordinate Reference:	Well SRC Evans P-26-23-14NHZ
Project:	SEC.26-T5N-R66W	TVD Reference:	WELL @ 4762.0ft (RKB - 15')
Reference Site:	SRC Evans Center Pad Sec.26-T5N-R66W	MD Reference:	WELL @ 4762.0ft (RKB - 15')
Site Error:	0.0ft	North Reference:	True
Reference Well:	SRC Evans P-26-23-14NHZ	Survey Calculation Method:	Minimum Curvature
Well Error:	0.0ft	Output errors are at	2.00 sigma
Reference Wellbore	Wellbore #1	Database:	Landmark
Reference Design:	Plan #1 (10-27-14)	Offset TVD Reference:	Offset Datum

Offset Design												Offset Site Error:	0.0 ft
Survey Program: 0-MWD												Offset Well Error:	0.0 ft
Reference		Offset		Semi Major Axis			Distance						Warning
Measured Depth (ft)	Vertical Depth (ft)	Measured Depth (ft)	Vertical Depth (ft)	Reference (ft)	Offset (ft)	Highside Toolface (°)	Offset Wellbore Centre +N/-S (ft)	+E/-W (ft)	Between Centres (ft)	Between Ellipses (ft)	Minimum Separation (ft)	Separation Factor	
8,700.0	6,870.0	9,026.6	7,200.0	36.3	36.7	-140.16	1,516.3	-245.8	429.8	377.0	52.74	8.149	
8,800.0	6,870.0	9,126.6	7,200.0	38.1	38.4	-140.16	1,616.3	-246.0	429.8	374.6	55.15	7.792	
8,900.0	6,870.0	9,226.6	7,200.0	39.8	40.1	-140.16	1,716.3	-246.3	429.8	372.2	57.59	7.462	
9,000.0	6,870.0	9,326.6	7,200.0	41.6	41.9	-140.16	1,816.3	-246.5	429.8	369.7	60.06	7.156	
9,100.0	6,870.0	9,426.6	7,200.0	43.3	43.6	-140.16	1,916.3	-246.7	429.8	367.2	62.54	6.872	
9,200.0	6,870.0	9,526.6	7,200.0	45.1	45.4	-140.16	2,016.3	-246.9	429.8	364.7	65.04	6.608	
9,300.0	6,870.0	9,626.6	7,200.0	46.9	47.2	-140.16	2,116.3	-247.2	429.8	362.2	67.56	6.362	
9,400.0	6,870.0	9,726.6	7,200.0	48.7	49.0	-140.16	2,216.3	-247.4	429.8	359.7	70.09	6.132	
9,500.0	6,870.0	9,826.6	7,200.0	50.5	50.7	-140.16	2,316.3	-247.6	429.8	357.1	72.64	5.917	
9,600.0	6,870.0	9,926.6	7,200.0	52.4	52.6	-140.16	2,416.3	-247.9	429.8	354.6	75.19	5.716	
9,700.0	6,870.0	10,026.6	7,200.0	54.2	54.4	-140.16	2,516.3	-248.1	429.8	352.0	77.76	5.527	
9,800.0	6,870.0	10,126.6	7,200.0	56.0	56.2	-140.16	2,616.3	-248.3	429.8	349.4	80.33	5.350	
9,900.0	6,870.0	10,226.6	7,200.0	57.9	58.0	-140.16	2,716.3	-248.5	429.8	346.9	82.92	5.183	
10,000.0	6,870.0	10,326.6	7,200.0	59.7	59.8	-140.16	2,816.3	-248.8	429.8	344.3	85.51	5.026	
10,100.0	6,870.0	10,426.6	7,200.0	61.5	61.7	-140.16	2,916.3	-249.0	429.8	341.7	88.11	4.878	
10,200.0	6,870.0	10,526.6	7,200.0	63.4	63.5	-140.16	3,016.3	-249.2	429.8	339.1	90.72	4.738	
10,300.0	6,870.0	10,626.6	7,200.0	65.3	65.4	-140.16	3,116.3	-249.5	429.8	336.5	93.33	4.605	
10,400.0	6,870.0	10,726.6	7,200.0	67.1	67.2	-140.16	3,216.3	-249.7	429.8	333.8	95.94	4.480	
10,500.0	6,870.0	10,826.6	7,200.0	69.0	69.1	-140.16	3,316.3	-249.9	429.8	331.2	98.57	4.360	
10,600.0	6,870.0	10,926.6	7,200.0	70.9	70.9	-140.16	3,416.3	-250.1	429.8	328.6	101.19	4.247	
10,700.0	6,870.0	11,026.6	7,200.0	72.7	72.8	-140.16	3,516.3	-250.4	429.8	326.0	103.82	4.140	
10,800.0	6,870.0	11,126.6	7,200.0	74.6	74.7	-140.16	3,616.3	-250.6	429.8	323.3	106.46	4.037	
10,900.0	6,870.0	11,226.6	7,200.0	76.5	76.5	-140.16	3,716.3	-250.8	429.8	320.7	109.10	3.940	
11,000.0	6,870.0	11,326.6	7,200.0	78.4	78.4	-140.16	3,816.3	-251.1	429.8	318.1	111.74	3.846	
11,100.0	6,870.0	11,426.6	7,200.0	80.2	80.3	-140.16	3,916.3	-251.3	429.8	315.4	114.38	3.757	
11,200.0	6,870.0	11,526.6	7,200.0	82.1	82.2	-140.16	4,016.3	-251.5	429.8	312.8	117.03	3.672	
11,300.0	6,870.0	11,626.6	7,200.0	84.0	84.0	-140.16	4,116.3	-251.8	429.8	310.1	119.68	3.591	
11,400.0	6,870.0	11,726.6	7,200.0	85.9	85.9	-140.16	4,216.3	-252.0	429.8	307.5	122.34	3.513	
11,500.0	6,870.0	11,826.6	7,200.0	87.8	87.8	-140.16	4,316.3	-252.2	429.8	304.8	124.99	3.439	
11,600.0	6,870.0	11,926.6	7,200.0	89.7	89.7	-140.16	4,416.3	-252.4	429.8	302.1	127.65	3.367	
11,700.0	6,870.0	12,026.6	7,200.0	91.5	91.6	-140.16	4,516.3	-252.7	429.8	299.5	130.31	3.298	
11,800.0	6,870.0	12,126.6	7,200.0	93.4	93.4	-140.16	4,616.3	-252.9	429.8	296.8	132.97	3.232	
11,900.0	6,870.0	12,226.6	7,200.0	95.3	95.3	-140.16	4,716.3	-253.1	429.8	294.2	135.64	3.169	
12,000.0	6,870.0	12,326.6	7,200.0	97.2	97.2	-140.16	4,816.3	-253.4	429.8	291.5	138.30	3.108	
12,100.0	6,870.0	12,426.6	7,200.0	99.1	99.1	-140.16	4,916.3	-253.6	429.8	288.8	140.97	3.049	
12,200.0	6,870.0	12,526.6	7,200.0	101.0	101.0	-140.16	5,016.3	-253.8	429.8	286.2	143.64	2.992	
12,300.0	6,870.0	12,626.6	7,200.0	102.9	102.9	-140.16	5,116.3	-254.0	429.8	283.5	146.31	2.938	
12,400.0	6,870.0	12,726.6	7,200.0	104.8	104.8	-140.16	5,216.3	-254.3	429.8	280.8	148.98	2.885	
12,500.0	6,870.0	12,826.6	7,200.0	106.7	106.7	-140.16	5,316.3	-254.5	429.8	278.2	151.65	2.834	
12,600.0	6,870.0	12,926.6	7,200.0	108.6	108.6	-140.16	5,416.3	-254.7	429.8	275.5	154.33	2.785	
12,700.0	6,870.0	13,026.6	7,200.0	110.5	110.5	-140.16	5,516.3	-255.0	429.8	272.8	157.00	2.738	
12,800.0	6,870.0	13,126.6	7,200.0	112.4	112.4	-140.16	5,616.3	-255.2	429.8	270.1	159.68	2.692	
12,900.0	6,870.0	13,226.6	7,200.0	114.3	114.3	-140.15	5,716.3	-255.4	429.8	267.5	162.36	2.647	
13,000.0	6,870.0	13,326.6	7,200.0	116.2	116.2	-140.15	5,816.3	-255.6	429.8	264.8	165.04	2.604	
13,100.0	6,870.0	13,426.6	7,200.0	118.1	118.1	-140.15	5,916.3	-255.9	429.8	262.1	167.72	2.563	
13,200.0	6,870.0	13,526.6	7,200.0	120.0	120.0	-140.15	6,016.3	-256.1	429.8	259.4	170.40	2.522	
13,300.0	6,870.0	13,626.6	7,200.0	121.9	121.9	-140.15	6,116.3	-256.3	429.8	256.7	173.08	2.483	
13,400.0	6,870.0	13,726.6	7,200.0	123.8	123.8	-140.15	6,216.3	-256.6	429.8	254.1	175.76	2.445	
13,500.0	6,870.0	13,826.6	7,200.0	125.7	125.7	-140.15	6,316.3	-256.8	429.8	251.4	178.45	2.409	
13,600.0	6,870.0	13,926.6	7,200.0	127.6	127.6	-140.15	6,416.3	-257.0	429.8	248.7	181.13	2.373	
13,700.0	6,870.0	14,026.6	7,200.0	129.5	129.5	-140.15	6,516.3	-257.2	429.8	246.0	183.82	2.338	
13,800.0	6,870.0	14,126.6	7,200.0	131.4	131.4	-140.15	6,616.3	-257.5	429.8	243.3	186.50	2.305	

CC - Min centre to center distance or convergent point, SF - min separation factor, ES - min ellipse separation

Company:	Synergy Resources	Local Co-ordinate Reference:	Well SRC Evans P-26-23-14NHZ
Project:	SEC.26-T5N-R66W	TVD Reference:	WELL @ 4762.0ft (RKB - 15')
Reference Site:	SRC Evans Center Pad Sec.26-T5N-R66W	MD Reference:	WELL @ 4762.0ft (RKB - 15')
Site Error:	0.0ft	North Reference:	True
Reference Well:	SRC Evans P-26-23-14NHZ	Survey Calculation Method:	Minimum Curvature
Well Error:	0.0ft	Output errors are at	2.00 sigma
Reference Wellbore	Wellbore #1	Database:	Landmark
Reference Design:	Plan #1 (10-27-14)	Offset TVD Reference:	Offset Datum

Offset Design													Offset Site Error:	0.0 ft
Survey Program: 0-MWD													Offset Well Error:	0.0 ft
Reference		Offset		Semi Major Axis			Distance						Warning	
Measured Depth (ft)	Vertical Depth (ft)	Measured Depth (ft)	Vertical Depth (ft)	Reference (ft)	Offset (ft)	Highside Toolface (°)	Offset Wellbore Centre +N/-S (ft)	+E/-W (ft)	Between Centres (ft)	Between Ellipses (ft)	Minimum Separation (ft)	Separation Factor		
13,900.0	6,870.0	14,226.6	7,200.0	133.3	133.3	-140.15	6,716.3	-257.7	429.8	240.6	189.19	2.272		
14,000.0	6,870.0	14,326.6	7,200.0	135.3	135.2	-140.15	6,816.3	-257.9	429.8	237.9	191.88	2.240		
14,100.0	6,870.0	14,426.6	7,200.0	137.2	137.1	-140.15	6,916.3	-258.2	429.8	235.3	194.56	2.209		
14,200.0	6,870.0	14,526.6	7,200.0	139.1	139.0	-140.15	7,016.3	-258.4	429.8	232.6	197.25	2.179		
14,300.0	6,870.0	14,626.6	7,200.0	141.0	140.9	-140.15	7,116.3	-258.6	429.8	229.9	199.94	2.150		
14,400.0	6,870.0	14,726.6	7,200.0	142.9	142.8	-140.15	7,216.3	-258.8	429.8	227.2	202.63	2.121		
14,500.0	6,870.0	14,826.6	7,200.0	144.8	144.7	-140.15	7,316.3	-259.1	429.8	224.5	205.32	2.093		
14,600.0	6,870.0	14,926.6	7,200.0	146.7	146.6	-140.15	7,416.3	-259.3	429.8	221.8	208.01	2.066		
14,700.0	6,870.0	15,026.6	7,200.0	148.6	148.5	-140.15	7,516.3	-259.5	429.8	219.1	210.70	2.040		
14,800.0	6,870.0	15,126.6	7,200.0	150.5	150.4	-140.15	7,616.3	-259.8	429.8	216.4	213.39	2.014		
14,900.0	6,870.0	15,226.6	7,200.0	152.4	152.3	-140.15	7,716.3	-260.0	429.8	213.7	216.09	1.989		
15,000.0	6,870.0	15,326.6	7,200.0	154.3	154.2	-140.15	7,816.3	-260.2	429.8	211.1	218.78	1.965		
15,100.0	6,870.0	15,426.6	7,200.0	156.3	156.2	-140.15	7,916.3	-260.4	429.8	208.4	221.47	1.941		
15,200.0	6,870.0	15,526.6	7,200.0	158.2	158.1	-140.15	8,016.3	-260.7	429.8	205.7	224.16	1.917		
15,300.0	6,870.0	15,626.6	7,200.0	160.1	160.0	-140.15	8,116.3	-260.9	429.8	203.0	226.86	1.895		
15,400.0	6,870.0	15,726.6	7,200.0	162.0	161.9	-140.15	8,216.3	-261.1	429.8	200.3	229.55	1.872		
15,500.0	6,870.0	15,826.6	7,200.0	163.9	163.8	-140.15	8,316.3	-261.4	429.8	197.6	232.25	1.851		
15,600.0	6,870.0	15,926.6	7,200.0	165.8	165.7	-140.15	8,416.3	-261.6	429.8	194.9	234.94	1.830		
15,700.0	6,870.0	16,026.6	7,200.0	167.7	167.6	-140.15	8,516.3	-261.8	429.8	192.2	237.64	1.809		
15,800.0	6,870.0	16,126.6	7,200.0	169.6	169.5	-140.15	8,616.3	-262.1	429.8	189.5	240.33	1.789		
15,900.0	6,870.0	16,226.6	7,200.0	171.5	171.4	-140.15	8,716.3	-262.3	429.8	186.8	243.03	1.769		
16,000.0	6,870.0	16,326.6	7,200.0	173.5	173.3	-140.15	8,816.3	-262.5	429.8	184.1	245.72	1.749		
16,100.0	6,870.0	16,426.6	7,200.0	175.4	175.3	-140.15	8,916.3	-262.7	429.8	181.4	248.42	1.730		
16,200.0	6,870.0	16,526.6	7,200.0	177.3	177.2	-140.15	9,016.3	-263.0	429.8	178.7	251.12	1.712		
16,300.0	6,870.0	16,626.6	7,200.0	179.2	179.1	-140.15	9,116.3	-263.2	429.8	176.0	253.81	1.694		
16,400.0	6,870.0	16,726.6	7,200.0	181.1	181.0	-140.15	9,216.3	-263.4	429.8	173.3	256.51	1.676		
16,500.0	6,870.0	16,826.6	7,200.0	183.0	182.9	-140.15	9,316.3	-263.7	429.8	170.6	259.21	1.658		
16,600.0	6,870.0	16,926.6	7,200.0	184.9	184.8	-140.15	9,416.3	-263.9	429.8	167.9	261.91	1.641		
16,660.6	6,870.0	16,987.2	7,200.0	186.1	186.0	-140.15	9,476.9	-264.0	429.8	166.3	263.54	1.631 SF		

Company:	Synergy Resources	Local Co-ordinate Reference:	Well SRC Evans P-26-23-14NHZ
Project:	SEC.26-T5N-R66W	TVD Reference:	WELL @ 4762.0ft (RKB - 15')
Reference Site:	SRC Evans Center Pad Sec.26-T5N-R66W	MD Reference:	WELL @ 4762.0ft (RKB - 15')
Site Error:	0.0ft	North Reference:	True
Reference Well:	SRC Evans P-26-23-14NHZ	Survey Calculation Method:	Minimum Curvature
Well Error:	0.0ft	Output errors are at	2.00 sigma
Reference Wellbore	Wellbore #1	Database:	Landmark
Reference Design:	Plan #1 (10-27-14)	Offset TVD Reference:	Offset Datum

Offset Design													Offset Site Error:	0.0 ft
Survey Program: 0-MWD													Offset Well Error:	0.0 ft
Reference		Offset		Semi Major Axis			Distance							Warning
Measured Depth (ft)	Vertical Depth (ft)	Measured Depth (ft)	Vertical Depth (ft)	Reference (ft)	Offset (ft)	Highside Toolface (°)	Offset Wellbore Centre +N/-S (ft)	+E/-W (ft)	Between Centres (ft)	Between Ellipses (ft)	Minimum Separation (ft)	Separation Factor		
0.0	0.0	1.0	1.0	0.0	0.0	0.00	45.2	0.0	45.2	45.2	0.00	N/A		
100.0	100.0	101.0	101.0	0.1	0.1	0.00	45.2	0.0	45.2	44.9	0.23	198.977		
200.0	200.0	201.0	201.0	0.3	0.3	0.00	45.2	0.0	45.2	44.5	0.68	66.766 CC, ES		
300.0	300.0	301.0	301.0	0.5	0.6	-176.76	45.2	0.0	46.9	45.8	1.11	42.263		
400.0	399.8	400.8	400.8	0.8	0.8	-177.08	45.2	0.0	52.1	50.6	1.54	33.768		
500.0	499.5	500.5	500.5	1.0	1.0	-177.49	45.2	0.0	60.8	58.9	1.99	30.565		
576.1	575.0	576.0	576.0	1.2	1.2	-177.80	45.2	0.0	69.8	67.5	2.33	29.895		
600.0	598.7	599.7	599.7	1.3	1.2	-177.90	45.2	0.0	72.9	70.5	2.44	29.886		
700.0	697.9	701.1	701.1	1.6	1.4	-179.02	43.8	-1.1	84.7	81.8	2.86	29.601		
800.0	797.0	802.9	802.8	1.9	1.6	178.62	39.6	-4.6	94.0	90.7	3.28	28.671		
900.0	896.1	904.9	904.4	2.2	1.9	175.21	32.7	-10.3	100.9	97.2	3.72	27.115		
1,000.0	995.3	1,006.9	1,005.5	2.6	2.1	170.74	23.0	-18.4	105.9	101.7	4.21	25.189		
1,100.0	1,094.4	1,107.8	1,105.1	2.9	2.4	165.29	10.8	-28.5	109.7	105.0	4.75	23.113		
1,200.0	1,193.6	1,207.1	1,203.1	3.2	2.7	159.98	-1.8	-38.9	114.0	108.7	5.34	21.358		
1,300.0	1,292.7	1,306.5	1,301.2	3.6	3.0	155.09	-14.4	-49.4	119.2	113.3	5.97	19.965		
1,400.0	1,391.8	1,405.8	1,399.2	3.9	3.4	150.64	-27.0	-59.8	125.3	118.6	6.64	18.869		
1,500.0	1,491.0	1,505.2	1,497.2	4.2	3.7	146.61	-39.6	-70.2	132.0	124.7	7.33	18.008		
1,600.0	1,590.1	1,604.6	1,595.2	4.6	4.1	142.99	-52.2	-80.7	139.3	131.3	8.03	17.336		
1,700.0	1,689.2	1,703.9	1,693.2	4.9	4.5	139.73	-64.8	-91.1	147.1	138.3	8.75	16.810		
1,800.0	1,788.4	1,803.3	1,791.2	5.2	4.8	136.82	-77.4	-101.6	155.3	145.9	9.47	16.399		
1,900.0	1,887.5	1,902.7	1,889.2	5.6	5.2	134.19	-90.0	-112.0	163.9	153.7	10.20	16.076		
2,000.0	1,986.7	2,002.0	1,987.2	5.9	5.6	131.84	-102.6	-122.4	172.8	161.9	10.92	15.824		
2,100.0	2,085.8	2,101.4	2,085.2	6.3	6.0	129.71	-115.2	-132.9	182.0	170.3	11.65	15.626		
2,200.0	2,184.9	2,200.7	2,183.2	6.6	6.3	127.80	-127.7	-143.3	191.4	179.0	12.37	15.472		
2,300.0	2,284.1	2,300.1	2,281.2	6.9	6.7	126.06	-140.3	-153.7	201.0	187.9	13.09	15.351		
2,400.0	2,383.2	2,399.5	2,379.2	7.3	7.1	124.48	-152.9	-164.2	210.7	196.9	13.81	15.257		
2,500.0	2,482.4	2,498.8	2,477.2	7.6	7.5	123.04	-165.5	-174.6	220.6	206.1	14.53	15.185		
2,600.0	2,581.5	2,598.2	2,575.3	8.0	7.9	121.73	-178.1	-185.0	230.6	215.4	15.24	15.129		
2,700.0	2,680.6	2,697.6	2,673.3	8.3	8.2	120.52	-190.7	-195.5	240.8	224.8	15.96	15.088		
2,800.0	2,779.8	2,796.9	2,771.3	8.6	8.6	119.41	-203.3	-205.9	251.0	234.3	16.67	15.058		
2,900.0	2,878.9	2,896.3	2,869.3	9.0	9.0	118.39	-215.9	-216.3	261.3	243.9	17.38	15.036		
3,000.0	2,978.1	2,995.6	2,967.3	9.3	9.4	117.45	-228.5	-226.8	271.7	253.6	18.09	15.022		
3,100.0	3,077.2	3,095.0	3,065.3	9.6	9.8	116.58	-241.1	-237.2	282.2	263.4	18.79	15.014		
3,200.0	3,176.3	3,194.4	3,163.3	10.0	10.2	115.77	-253.7	-247.6	292.7	273.2	19.50	15.011		
3,300.0	3,275.5	3,293.7	3,261.3	10.3	10.5	115.01	-266.3	-258.1	303.3	283.1	20.20	15.011		
3,400.0	3,374.6	3,393.1	3,359.3	10.7	10.9	114.31	-278.9	-268.5	313.9	293.0	20.90	15.015		
3,500.0	3,473.8	3,492.5	3,457.3	11.0	11.3	113.65	-291.4	-279.0	324.5	302.9	21.61	15.022		
3,600.0	3,572.9	3,591.8	3,555.3	11.3	11.7	113.04	-304.0	-289.4	335.2	312.9	22.31	15.030		
3,700.0	3,672.0	3,691.2	3,653.3	11.7	12.1	112.46	-316.6	-299.8	346.0	323.0	23.00	15.040		
3,800.0	3,771.2	3,790.6	3,751.3	12.0	12.5	111.91	-329.2	-310.3	356.8	333.1	23.70	15.052		
3,900.0	3,870.3	3,889.9	3,849.4	12.4	12.9	111.40	-341.8	-320.7	367.6	343.2	24.40	15.064		
4,000.0	3,969.5	3,989.3	3,947.4	12.7	13.3	110.92	-354.4	-331.1	378.4	353.3	25.10	15.078		
4,100.0	4,068.6	4,088.6	4,045.4	13.0	13.6	110.47	-367.0	-341.6	389.3	363.5	25.79	15.092		
4,200.0	4,167.7	4,188.0	4,143.4	13.4	14.0	110.04	-379.6	-352.0	400.1	373.6	26.49	15.106		
4,300.0	4,266.9	4,287.4	4,241.4	13.7	14.4	109.63	-392.2	-362.4	411.0	383.9	27.18	15.121		
4,400.0	4,366.0	4,386.7	4,339.4	14.1	14.8	109.24	-404.8	-372.9	422.0	394.1	27.88	15.136		
4,500.0	4,465.1	4,486.1	4,437.4	14.4	15.2	108.88	-417.4	-383.3	432.9	404.3	28.57	15.152		
4,600.0	4,564.3	4,585.5	4,535.4	14.7	15.6	108.53	-430.0	-393.7	443.8	414.6	29.26	15.167		
4,661.2	4,625.0	4,646.3	4,595.4	14.9	15.8	108.32	-437.7	-400.1	450.6	420.9	29.69	15.177		
4,700.0	4,663.5	4,684.8	4,633.4	15.1	16.0	108.24	-442.5	-404.2	454.7	424.8	29.94	15.188		
4,800.0	4,763.0	4,784.2	4,731.4	15.3	16.3	107.76	-455.1	-414.6	464.8	434.3	30.51	15.233		
4,900.0	4,862.7	4,883.4	4,829.3	15.4	16.7	106.88	-467.7	-425.0	473.9	442.8	31.04	15.268		

CC - Min centre to center distance or convergent point, SF - min separation factor, ES - min ellipse separation

SRC Evans Center Pad Sec.26-T5N-R66W - SRC Evans 23-26-23-14NHZ - Wellbore #1 - Plan #1 (10-													Offset Site Error:	0.0 ft
Survey Program: 0-MWD													Offset Well Error:	0.0 ft
Reference		Offset		Semi Major Axis			Distance							
Measured Depth (ft)	Vertical Depth (ft)	Measured Depth (ft)	Vertical Depth (ft)	Reference (ft)	Offset (ft)	Highside Toolface (°)	Offset Wellbore Centre +N/-S (ft)	+E/-W (ft)	Between Centres (ft)	Between Ellipses (ft)	Minimum Separation (ft)	Separation Factor	Warning	
5,000.0	4,962.7	4,982.3	4,926.9	15.6	17.1	105.63	-480.2	-435.4	482.2	450.7	31.51	15.302		
5,037.3	5,000.0	5,019.2	4,963.2	15.6	17.3	-78.29	-484.9	-439.3	485.1	453.4	31.69	15.311		
5,100.0	5,062.7	5,081.0	5,024.2	15.7	17.5	-79.34	-492.8	-445.8	490.1	458.1	31.96	15.336		
5,200.0	5,162.7	5,179.6	5,121.5	15.8	17.9	-80.98	-505.3	-456.1	498.4	466.0	32.36	15.402		
5,300.0	5,262.7	5,278.3	5,218.8	16.0	18.3	-82.57	-517.8	-466.5	507.0	474.3	32.74	15.484		
5,400.0	5,362.7	5,376.9	5,316.0	16.1	18.7	-84.10	-530.3	-476.9	516.1	483.0	33.12	15.581		
5,500.0	5,462.7	5,475.5	5,413.3	16.2	19.0	-85.58	-542.8	-487.2	525.5	492.0	33.49	15.690		
5,600.0	5,562.7	5,574.2	5,510.6	16.3	19.4	-87.00	-555.3	-497.6	535.2	501.4	33.85	15.811		
5,700.0	5,662.7	5,683.6	5,618.8	16.5	19.7	-88.41	-568.0	-508.1	544.5	510.4	34.14	15.949		
5,800.0	5,762.7	5,796.5	5,730.9	16.6	20.0	-89.46	-577.9	-516.3	551.6	517.2	34.41	16.029		
5,900.0	5,862.7	5,910.2	5,844.3	16.7	20.2	-90.13	-584.4	-521.7	556.3	521.6	34.69	16.038		
6,000.0	5,962.7	6,024.4	5,958.5	16.9	20.4	-90.44	-587.4	-524.2	558.5	523.6	34.97	15.973		
6,100.0	6,062.7	6,129.6	6,063.7	17.0	20.5	-90.46	-587.6	-524.4	558.7	523.5	35.25	15.849		
6,191.1	6,153.8	6,220.7	6,154.8	17.1	20.6	-90.46	-587.6	-524.4	558.7	523.2	35.50	15.739		
6,200.0	6,162.7	6,229.7	6,163.7	17.2	20.6	-90.33	-587.6	-524.4	558.7	523.2	35.51	15.735		
6,250.0	6,212.6	6,279.9	6,213.9	17.2	20.7	-90.32	-585.1	-524.4	558.7	523.1	35.60	15.694		
6,300.0	6,262.3	6,330.2	6,263.8	17.2	20.7	-90.31	-579.1	-524.4	558.7	523.1	35.63	15.679		
6,350.0	6,311.4	6,380.5	6,313.2	17.2	20.7	-90.30	-569.7	-524.4	558.7	523.1	35.61	15.690		
6,400.0	6,359.7	6,430.7	6,361.8	17.2	20.6	-90.29	-556.8	-524.4	558.7	523.1	35.53	15.724		
6,450.0	6,407.1	6,481.0	6,409.3	17.1	20.6	-90.28	-540.5	-524.4	558.7	523.3	35.40	15.781		
6,500.0	6,453.2	6,531.2	6,455.5	17.0	20.5	-90.26	-521.0	-524.5	558.6	523.4	35.23	15.858		
6,550.0	6,497.9	6,581.4	6,500.3	17.0	20.4	-90.24	-498.2	-524.5	558.6	523.6	35.02	15.952		
6,600.0	6,540.8	6,631.6	6,543.4	16.8	20.2	-90.23	-472.4	-524.5	558.6	523.8	34.78	16.059		
6,650.0	6,581.9	6,681.8	6,584.5	16.7	20.1	-90.21	-443.7	-524.5	558.5	524.0	34.53	16.175		
6,700.0	6,620.9	6,732.0	6,623.5	16.6	19.9	-90.19	-412.1	-524.6	558.5	524.2	34.27	16.295		
6,750.0	6,657.7	6,782.1	6,660.2	16.5	19.8	-90.16	-377.9	-524.6	558.4	524.4	34.02	16.413		
6,800.0	6,691.9	6,832.3	6,694.3	16.4	19.6	-90.14	-341.3	-524.6	558.4	524.6	33.79	16.524		
6,850.0	6,723.6	6,882.4	6,725.9	16.3	19.4	-90.12	-302.3	-524.7	558.3	524.8	33.59	16.620		
6,900.0	6,752.5	6,932.5	6,754.6	16.3	19.3	-90.10	-261.3	-524.7	558.3	524.9	33.44	16.695		
6,950.0	6,778.4	6,982.6	6,780.4	16.3	19.1	-90.07	-218.4	-524.8	558.2	524.9	33.34	16.741		
7,000.0	6,801.4	7,032.6	6,803.1	16.3	18.9	-90.05	-173.7	-524.8	558.2	524.9	33.32	16.754		
7,050.0	6,821.1	7,082.7	6,822.6	16.3	18.8	-90.02	-127.7	-524.9	558.1	524.8	33.37	16.726		
7,100.0	6,837.6	7,132.7	6,838.8	16.4	18.6	-90.00	-80.4	-524.9	558.1	524.6	33.51	16.656		
7,150.0	6,850.8	7,182.7	6,851.7	16.6	18.5	-89.98	-32.1	-525.0	558.0	524.3	33.73	16.541		
7,200.0	6,860.6	7,232.7	6,861.3	16.8	18.4	-89.95	17.0	-525.0	557.9	523.9	34.06	16.383		
7,250.0	6,866.9	7,282.7	6,867.3	17.0	18.2	-89.93	66.6	-525.1	557.9	523.4	34.47	16.183		
7,300.0	6,869.8	7,332.6	6,869.9	17.3	18.2	-89.90	116.4	-525.1	557.8	522.8	34.98	15.947		
7,316.1	6,870.0	7,348.7	6,870.0	17.4	18.1	-89.90	132.5	-525.1	557.8	522.6	35.16	15.864		
7,400.0	6,870.0	7,432.6	6,870.0	18.0	18.3	-89.90	216.4	-525.2	557.7	521.4	36.28	15.370		
7,500.0	6,870.0	7,532.6	6,870.0	18.9	19.1	-89.90	316.4	-525.3	557.6	519.6	37.92	14.705		
7,600.0	6,870.0	7,632.6	6,870.0	19.9	20.1	-89.90	416.4	-525.4	557.4	517.6	39.85	13.987		
7,700.0	6,870.0	7,732.6	6,870.0	21.1	21.2	-89.90	516.4	-525.5	557.3	515.3	42.05	13.253		
7,800.0	6,870.0	7,832.6	6,870.0	22.3	22.5	-89.90	616.4	-525.6	557.2	512.7	44.47	12.528		
7,900.0	6,870.0	7,932.6	6,870.0	23.7	23.8	-89.90	716.4	-525.7	557.1	510.0	47.09	11.830		
8,000.0	6,870.0	8,032.6	6,870.0	25.1	25.2	-89.90	816.4	-525.8	556.9	507.1	49.86	11.170		
8,100.0	6,870.0	8,132.6	6,870.0	26.6	26.6	-89.90	916.4	-525.9	556.8	504.0	52.76	10.553		
8,200.0	6,870.0	8,232.6	6,870.0	28.1	28.1	-89.90	1,016.4	-526.0	556.7	500.9	55.78	9.979		
8,300.0	6,870.0	8,332.6	6,870.0	29.7	29.7	-89.90	1,116.4	-526.1	556.5	497.6	58.90	9.449		
8,400.0	6,870.0	8,432.6	6,870.0	31.3	31.2	-89.90	1,216.4	-526.2	556.4	494.3	62.10	8.961		
8,500.0	6,870.0	8,532.6	6,870.0	33.0	32.9	-89.90	1,316.4	-526.3	556.3	490.9	65.36	8.511		
8,600.0	6,870.0	8,632.6	6,870.0	34.6	34.5	-89.90	1,416.4	-526.4	556.2	487.5	68.69	8.097		
8,700.0	6,870.0	8,732.6	6,870.0	36.3	36.2	-89.90	1,516.4	-526.5	556.0	484.0	72.07	7.716		

Offset Design													Offset Site Error:		0.0 ft
Survey Program: 0-MWD													Offset Well Error:		0.0 ft
Reference		Offset		Semi Major Axis			Distance								
Measured Depth	Vertical Depth	Measured Depth	Vertical Depth	Reference	Offset	Highside Toolface	Offset Wellbore Centre		Between Centres	Between Ellipses	Minimum Separation	Separation Factor	Warning		
(ft)	(ft)	(ft)	(ft)	(ft)	(ft)	(°)	+N/-S (ft)	+E/-W (ft)	(ft)	(ft)	(ft)				
8,800.0	6,870.0	8,832.6	6,870.0	38.1	37.9	-89.90	1,616.4	-526.6	555.9	480.4	75.49	7.364			
8,900.0	6,870.0	8,932.6	6,870.0	39.8	39.6	-89.90	1,716.4	-526.7	555.8	476.8	78.95	7.040			
9,000.0	6,870.0	9,032.6	6,870.0	41.6	41.3	-89.90	1,816.4	-526.8	555.7	473.2	82.44	6.740			
9,100.0	6,870.0	9,132.6	6,870.0	43.3	43.0	-89.90	1,916.4	-526.9	555.5	469.6	85.97	6.462			
9,200.0	6,870.0	9,232.6	6,870.0	45.1	44.8	-89.90	2,016.4	-527.0	555.4	465.9	89.52	6.204			
9,300.0	6,870.0	9,332.6	6,870.0	46.9	46.6	-89.90	2,116.4	-527.1	555.3	462.2	93.09	5.965			
9,400.0	6,870.0	9,432.6	6,870.0	48.7	48.4	-89.90	2,216.4	-527.2	555.1	458.5	96.69	5.742			
9,500.0	6,870.0	9,532.6	6,870.0	50.5	50.1	-89.90	2,316.4	-527.3	555.0	454.7	100.30	5.534			
9,600.0	6,870.0	9,632.6	6,870.0	52.4	51.9	-89.90	2,416.4	-527.4	554.9	451.0	103.93	5.339			
9,700.0	6,870.0	9,732.6	6,870.0	54.2	53.8	-89.90	2,516.4	-527.5	554.8	447.2	107.57	5.157			
9,800.0	6,870.0	9,832.6	6,870.0	56.0	55.6	-89.90	2,616.4	-527.6	554.6	443.4	111.23	4.986			
9,900.0	6,870.0	9,932.6	6,870.0	57.9	57.4	-89.90	2,716.4	-527.7	554.5	439.6	114.90	4.826			
10,000.0	6,870.0	10,032.6	6,870.0	59.7	59.2	-89.90	2,816.4	-527.8	554.4	435.8	118.58	4.675			
10,100.0	6,870.0	10,132.6	6,870.0	61.5	61.1	-89.90	2,916.4	-527.9	554.3	432.0	122.27	4.533			
10,200.0	6,870.0	10,232.6	6,870.0	63.4	62.9	-89.90	3,016.4	-528.0	554.1	428.2	125.97	4.399			
10,300.0	6,870.0	10,332.6	6,870.0	65.3	64.7	-89.90	3,116.4	-528.1	554.0	424.3	129.68	4.272			
10,400.0	6,870.0	10,432.6	6,870.0	67.1	66.6	-89.90	3,216.4	-528.2	553.9	420.5	133.39	4.152			
10,500.0	6,870.0	10,532.6	6,870.0	69.0	68.4	-89.90	3,316.4	-528.3	553.7	416.6	137.12	4.039			
10,600.0	6,870.0	10,632.6	6,870.0	70.9	70.3	-89.90	3,416.4	-528.4	553.6	412.8	140.84	3.931			
10,700.0	6,870.0	10,732.6	6,870.0	72.7	72.1	-89.90	3,516.4	-528.5	553.5	408.9	144.58	3.828			
10,800.0	6,870.0	10,832.6	6,870.0	74.6	74.0	-89.90	3,616.4	-528.6	553.4	405.0	148.32	3.731			
10,900.0	6,870.0	10,932.6	6,870.0	76.5	75.9	-89.90	3,716.4	-528.7	553.2	401.2	152.06	3.638			
11,000.0	6,870.0	11,032.6	6,870.0	78.4	77.7	-89.90	3,816.4	-528.8	553.1	397.3	155.81	3.550			
11,100.0	6,870.0	11,132.6	6,870.0	80.2	79.6	-89.90	3,916.4	-528.9	553.0	393.4	159.57	3.465			
11,200.0	6,870.0	11,232.6	6,870.0	82.1	81.5	-89.90	4,016.4	-529.0	552.9	389.5	163.33	3.385			
11,300.0	6,870.0	11,332.6	6,870.0	84.0	83.4	-89.90	4,116.4	-529.1	552.7	385.6	167.09	3.308			
11,400.0	6,870.0	11,432.6	6,870.0	85.9	85.2	-89.90	4,216.4	-529.2	552.6	381.7	170.86	3.234			
11,500.0	6,870.0	11,532.6	6,870.0	87.8	87.1	-89.90	4,316.4	-529.3	552.5	377.8	174.62	3.164			
11,600.0	6,870.0	11,632.6	6,870.0	89.7	89.0	-89.90	4,416.4	-529.4	552.3	373.9	178.40	3.096			
11,700.0	6,870.0	11,732.6	6,870.0	91.5	90.9	-89.90	4,516.4	-529.5	552.2	370.0	182.17	3.031			
11,800.0	6,870.0	11,832.6	6,870.0	93.4	92.8	-89.90	4,616.4	-529.6	552.1	366.1	185.95	2.969			
11,900.0	6,870.0	11,932.6	6,870.0	95.3	94.6	-89.90	4,716.4	-529.7	552.0	362.2	189.73	2.909			
12,000.0	6,870.0	12,032.6	6,870.0	97.2	96.5	-89.90	4,816.4	-529.8	551.8	358.3	193.51	2.852			
12,100.0	6,870.0	12,132.6	6,870.0	99.1	98.4	-89.90	4,916.4	-529.9	551.7	354.4	197.30	2.796			
12,200.0	6,870.0	12,232.6	6,870.0	101.0	100.3	-89.90	5,016.4	-530.0	551.6	350.5	201.09	2.743			
12,300.0	6,870.0	12,332.6	6,870.0	102.9	102.2	-89.90	5,116.4	-530.1	551.5	346.6	204.88	2.692			
12,400.0	6,870.0	12,432.6	6,870.0	104.8	104.1	-89.90	5,216.4	-530.2	551.3	342.7	208.67	2.642			
12,500.0	6,870.0	12,532.6	6,870.0	106.7	106.0	-89.90	5,316.4	-530.3	551.2	338.7	212.46	2.594			
12,600.0	6,870.0	12,632.6	6,870.0	108.6	107.9	-89.90	5,416.4	-530.4	551.1	334.8	216.26	2.548			
12,700.0	6,870.0	12,732.6	6,870.0	110.5	109.8	-89.90	5,516.4	-530.5	550.9	330.9	220.05	2.504			
12,800.0	6,870.0	12,832.6	6,870.0	112.4	111.6	-89.90	5,616.4	-530.6	550.8	327.0	223.85	2.461			
12,900.0	6,870.0	12,932.6	6,870.0	114.3	113.5	-89.90	5,716.4	-530.7	550.7	323.0	227.65	2.419			
13,000.0	6,870.0	13,032.6	6,870.0	116.2	115.4	-89.90	5,816.4	-530.8	550.6	319.1	231.45	2.379			
13,100.0	6,870.0	13,132.6	6,870.0	118.1	117.3	-89.90	5,916.4	-530.9	550.4	315.2	235.25	2.340			
13,200.0	6,870.0	13,232.6	6,870.0	120.0	119.2	-89.90	6,016.4	-531.0	550.3	311.2	239.06	2.302			
13,300.0	6,870.0	13,332.6	6,870.0	121.9	121.1	-89.90	6,116.4	-531.1	550.2	307.3	242.86	2.265			
13,400.0	6,870.0	13,432.6	6,870.0	123.8	123.0	-89.90	6,216.4	-531.2	550.1	303.4	246.67	2.230			
13,500.0	6,870.0	13,532.6	6,870.0	125.7	124.9	-89.90	6,316.4	-531.3	549.9	299.4	250.48	2.196			
13,600.0	6,870.0	13,632.6	6,870.0	127.6	126.8	-89.90	6,416.4	-531.4	549.8	295.5	254.28	2.162			
13,700.0	6,870.0	13,732.6	6,870.0	129.5	128.7	-89.90	6,516.4	-531.5	549.7	291.6	258.09	2.130			
13,800.0	6,870.0	13,832.6	6,870.0	131.4	130.6	-89.90	6,616.4	-531.6	549.5	287.6	261.90	2.098			
13,900.0	6,870.0	13,932.6	6,870.0	133.3	132.5	-89.90	6,716.4	-531.7	549.4	283.7	265.71	2.068			

Company:	Synergy Resources	Local Co-ordinate Reference:	Well SRC Evans P-26-23-14NHZ
Project:	SEC.26-T5N-R66W	TVD Reference:	WELL @ 4762.0ft (RKB - 15')
Reference Site:	SRC Evans Center Pad Sec.26-T5N-R66W	MD Reference:	WELL @ 4762.0ft (RKB - 15')
Site Error:	0.0ft	North Reference:	True
Reference Well:	SRC Evans P-26-23-14NHZ	Survey Calculation Method:	Minimum Curvature
Well Error:	0.0ft	Output errors are at	2.00 sigma
Reference Wellbore	Wellbore #1	Database:	Landmark
Reference Design:	Plan #1 (10-27-14)	Offset TVD Reference:	Offset Datum

Offset Design													Offset Site Error:	0.0 ft
Survey Program: 0-MWD													Offset Well Error:	0.0 ft
Reference		Offset		Semi Major Axis			Distance							Warning
Measured Depth (ft)	Vertical Depth (ft)	Measured Depth (ft)	Vertical Depth (ft)	Reference (ft)	Offset (ft)	Highside Toolface (°)	Offset Wellbore Centre +N/-S (ft)	+E/-W (ft)	Between Centres (ft)	Between Ellipses (ft)	Minimum Separation (ft)	Separation Factor		
14,000.0	6,870.0	14,032.6	6,870.0	135.3	134.4	-89.90	6,816.4	-531.8	549.3	279.8	269.53	2.038		
14,100.0	6,870.0	14,132.6	6,870.0	137.2	136.3	-89.90	6,916.4	-531.9	549.2	275.8	273.34	2.009		
14,200.0	6,870.0	14,232.6	6,870.0	139.1	138.2	-89.90	7,016.4	-532.0	549.0	271.9	277.15	1.981		
14,300.0	6,870.0	14,332.6	6,870.0	141.0	140.2	-89.90	7,116.4	-532.1	548.9	267.9	280.97	1.954		
14,400.0	6,870.0	14,432.6	6,870.0	142.9	142.1	-89.90	7,216.4	-532.2	548.8	264.0	284.78	1.927		
14,500.0	6,870.0	14,532.6	6,870.0	144.8	144.0	-89.90	7,316.4	-532.3	548.7	260.1	288.60	1.901		
14,600.0	6,870.0	14,632.6	6,870.0	146.7	145.9	-89.90	7,416.4	-532.4	548.5	256.1	292.42	1.876		
14,700.0	6,870.0	14,732.6	6,870.0	148.6	147.8	-89.90	7,516.4	-532.5	548.4	252.2	296.23	1.851		
14,800.0	6,870.0	14,832.6	6,870.0	150.5	149.7	-89.90	7,616.4	-532.6	548.3	248.2	300.05	1.827		
14,900.0	6,870.0	14,932.6	6,870.0	152.4	151.6	-89.90	7,716.4	-532.7	548.1	244.3	303.87	1.804		
15,000.0	6,870.0	15,032.6	6,870.0	154.3	153.5	-89.90	7,816.4	-532.8	548.0	240.3	307.69	1.781		
15,100.0	6,870.0	15,132.6	6,870.0	156.3	155.4	-89.90	7,916.4	-532.9	547.9	236.4	311.51	1.759		
15,200.0	6,870.0	15,232.6	6,870.0	158.2	157.3	-89.90	8,016.4	-533.0	547.8	232.4	315.33	1.737		
15,300.0	6,870.0	15,332.6	6,870.0	160.1	159.2	-89.90	8,116.4	-533.1	547.6	228.5	319.15	1.716		
15,400.0	6,870.0	15,432.6	6,870.0	162.0	161.1	-89.90	8,216.4	-533.2	547.5	224.5	322.97	1.695		
15,500.0	6,870.0	15,532.6	6,870.0	163.9	163.0	-89.90	8,316.4	-533.3	547.4	220.6	326.79	1.675		
15,600.0	6,870.0	15,632.6	6,870.0	165.8	164.9	-89.90	8,416.4	-533.4	547.3	216.6	330.61	1.655		
15,700.0	6,870.0	15,732.6	6,870.0	167.7	166.9	-89.90	8,516.4	-533.5	547.1	212.7	334.44	1.636		
15,800.0	6,870.0	15,832.6	6,870.0	169.6	168.8	-89.90	8,616.4	-533.6	547.0	208.7	338.26	1.617		
15,900.0	6,870.0	15,932.6	6,870.0	171.5	170.7	-89.90	8,716.4	-533.7	546.9	204.8	342.08	1.599		
16,000.0	6,870.0	16,032.6	6,870.0	173.5	172.6	-89.90	8,816.4	-533.8	546.7	200.8	345.91	1.581		
16,100.0	6,870.0	16,132.6	6,870.0	175.4	174.5	-89.90	8,916.4	-533.9	546.6	196.9	349.73	1.563		
16,200.0	6,870.0	16,232.6	6,870.0	177.3	176.4	-89.90	9,016.4	-534.0	546.5	192.9	353.56	1.546		
16,300.0	6,870.0	16,332.6	6,870.0	179.2	178.3	-89.90	9,116.4	-534.1	546.4	189.0	357.38	1.529		
16,400.0	6,870.0	16,432.6	6,870.0	181.1	180.2	-89.90	9,216.4	-534.2	546.2	185.0	361.21	1.512		
16,500.0	6,870.0	16,532.6	6,870.0	183.0	182.1	-89.90	9,316.4	-534.3	546.1	181.1	365.03	1.496 Level 3		
16,600.0	6,870.0	16,632.6	6,870.0	184.9	184.0	-89.90	9,416.4	-534.4	546.0	177.1	368.86	1.480 Level 3		
16,660.6	6,870.0	16,693.2	6,870.0	186.1	185.2	-89.90	9,477.0	-534.5	545.9	174.7	371.18	1.471 Level 3, SF		

Company:	Synergy Resources	Local Co-ordinate Reference:	Well SRC Evans P-26-23-14NHZ
Project:	SEC.26-T5N-R66W	TVD Reference:	WELL @ 4762.0ft (RKB - 15')
Reference Site:	SRC Evans Center Pad Sec.26-T5N-R66W	MD Reference:	WELL @ 4762.0ft (RKB - 15')
Site Error:	0.0ft	North Reference:	True
Reference Well:	SRC Evans P-26-23-14NHZ	Survey Calculation Method:	Minimum Curvature
Well Error:	0.0ft	Output errors are at	2.00 sigma
Reference Wellbore	Wellbore #1	Database:	Landmark
Reference Design:	Plan #1 (10-27-14)	Offset TVD Reference:	Offset Datum

Offset Design													Offset Site Error:	0.0 ft
Survey Program: 0-MWD													Offset Well Error:	0.0 ft
Reference		Offset		Semi Major Axis			Distance							Warning
Measured Depth (ft)	Vertical Depth (ft)	Measured Depth (ft)	Vertical Depth (ft)	Reference (ft)	Offset (ft)	Highside Toolface (°)	Offset Wellbore Centre +N/-S (ft)	+E/-W (ft)	Between Centres (ft)	Between Ellipses (ft)	Minimum Separation (ft)	Separation Factor		
0.0	0.0	2.0	2.0	0.0	0.0	-0.14	112.6	-0.3	112.6	112.6	0.00	N/A		
100.0	100.0	102.0	102.0	0.1	0.1	-0.14	112.6	-0.3	112.6	112.3	0.23	491.004		
200.0	200.0	202.0	202.0	0.3	0.3	-0.14	112.6	-0.3	112.6	111.9	0.68	165.836 CC, ES		
300.0	300.0	302.0	302.0	0.5	0.6	-176.82	112.6	-0.3	114.3	113.2	1.11	102.776		
400.0	399.8	401.8	401.8	0.8	0.8	-176.96	112.6	-0.3	119.5	118.0	1.55	77.309		
500.0	499.5	501.5	501.5	1.0	1.0	-177.15	112.6	-0.3	128.2	126.2	1.99	64.352		
576.1	575.0	577.0	577.0	1.2	1.2	-177.33	112.6	-0.3	137.2	134.9	2.34	58.705		
600.0	598.7	600.7	600.7	1.3	1.2	-177.39	112.6	-0.3	140.3	137.9	2.44	57.453		
700.0	697.9	699.9	699.9	1.6	1.5	-177.61	112.6	-0.3	153.4	150.5	2.89	53.116		
800.0	797.0	799.0	799.0	1.9	1.7	-177.80	112.6	-0.3	166.5	163.1	3.34	49.862		
900.0	896.1	898.1	898.1	2.2	1.9	-177.96	112.6	-0.3	179.6	175.8	3.79	47.340		
1,000.0	995.3	997.3	997.3	2.6	2.1	-178.10	112.6	-0.3	192.6	188.4	4.25	45.334		
1,100.0	1,094.4	1,096.4	1,096.4	2.9	2.4	-178.22	112.6	-0.3	205.7	201.0	4.71	43.703		
1,200.0	1,193.6	1,195.6	1,195.6	3.2	2.6	-178.33	112.6	-0.3	218.8	213.6	5.17	42.352		
1,300.0	1,292.7	1,301.1	1,301.1	3.6	2.8	-178.15	111.2	0.9	230.6	225.0	5.61	41.078		
1,400.0	1,391.8	1,407.5	1,407.3	3.9	3.0	-177.41	106.8	4.5	239.5	233.4	6.04	39.629		
1,500.0	1,491.0	1,514.1	1,513.5	4.2	3.2	-176.13	99.4	10.8	245.6	239.1	6.49	37.839		
1,600.0	1,590.1	1,620.7	1,619.2	4.6	3.4	-174.31	88.9	19.5	249.0	242.1	6.96	35.776		
1,700.0	1,689.2	1,727.0	1,724.1	4.9	3.7	-171.93	75.5	30.7	250.0	242.5	7.46	33.495		
1,800.0	1,788.4	1,831.7	1,826.6	5.2	4.0	-168.98	59.4	44.2	248.8	240.8	8.01	31.069		
1,900.0	1,887.5	1,930.8	1,923.4	5.6	4.4	-165.93	43.1	57.7	247.5	238.9	8.59	28.813		
2,000.0	1,986.7	2,029.9	2,020.3	5.9	4.7	-162.86	26.9	71.3	246.8	237.6	9.21	26.797		
2,040.4	2,026.7	2,070.0	2,059.4	6.1	4.9	-161.61	20.3	76.8	246.7	237.3	9.47	26.047		
2,100.0	2,085.8	2,129.0	2,117.1	6.3	5.1	-159.78	10.7	84.9	246.9	237.0	9.87	25.011		
2,200.0	2,184.9	2,228.1	2,213.9	6.6	5.5	-156.71	-5.6	98.4	247.7	237.1	10.57	23.426		
2,300.0	2,284.1	2,327.2	2,310.7	6.9	5.9	-153.67	-21.8	112.0	249.2	237.9	11.31	22.034		
2,400.0	2,383.2	2,426.3	2,407.5	7.3	6.3	-150.67	-38.1	125.5	251.4	239.3	12.08	20.817		
2,500.0	2,482.4	2,525.4	2,504.3	7.6	6.7	-147.74	-54.3	139.1	254.3	241.4	12.87	19.758		
2,600.0	2,581.5	2,624.5	2,601.2	8.0	7.2	-144.87	-70.5	152.7	257.9	244.2	13.69	18.841		
2,700.0	2,680.6	2,723.6	2,698.0	8.3	7.6	-142.09	-86.8	166.2	262.1	247.5	14.52	18.050		
2,800.0	2,779.8	2,822.7	2,794.8	8.6	8.0	-139.41	-103.0	179.8	266.9	251.5	15.36	17.371		
2,900.0	2,878.9	2,921.8	2,891.6	9.0	8.5	-136.82	-119.2	193.3	272.2	256.0	16.22	16.789		
3,000.0	2,978.1	3,020.9	2,988.4	9.3	8.9	-134.33	-135.5	206.9	278.2	261.1	17.07	16.293		
3,100.0	3,077.2	3,120.0	3,085.2	9.6	9.4	-131.95	-151.7	220.5	284.6	266.7	17.93	15.871		
3,200.0	3,176.3	3,219.1	3,182.1	10.0	9.8	-129.68	-167.9	234.0	291.5	272.7	18.79	15.514		
3,300.0	3,275.5	3,318.2	3,278.9	10.3	10.3	-127.52	-184.2	247.6	298.8	279.2	19.64	15.213		
3,400.0	3,374.6	3,417.3	3,375.7	10.7	10.7	-125.46	-200.4	261.2	306.6	286.1	20.49	14.961		
3,500.0	3,473.8	3,516.4	3,472.5	11.0	11.2	-123.50	-216.7	274.7	314.7	293.4	21.34	14.750		
3,600.0	3,572.9	3,615.5	3,569.3	11.3	11.6	-121.64	-232.9	288.3	323.2	301.0	22.17	14.576		
3,700.0	3,672.0	3,714.6	3,666.1	11.7	12.1	-119.88	-249.1	301.8	332.0	309.0	23.00	14.433		
3,800.0	3,771.2	3,813.7	3,763.0	12.0	12.5	-118.21	-265.4	315.4	341.1	317.2	23.82	14.317		
3,900.0	3,870.3	3,912.8	3,859.8	12.4	13.0	-116.63	-281.6	329.0	350.4	325.8	24.64	14.224		
4,000.0	3,969.5	4,011.9	3,956.6	12.7	13.5	-115.13	-297.8	342.5	360.1	334.6	25.45	14.151		
4,100.0	4,068.6	4,111.0	4,053.4	13.0	13.9	-113.71	-314.1	356.1	369.9	343.7	26.25	14.095		
4,200.0	4,167.7	4,210.1	4,150.2	13.4	14.4	-112.36	-330.3	369.6	380.0	353.0	27.04	14.054		
4,300.0	4,266.9	4,309.2	4,247.0	13.7	14.8	-111.08	-346.5	383.2	390.3	362.5	27.82	14.026		
4,400.0	4,366.0	4,408.3	4,343.9	14.1	15.3	-109.87	-362.8	396.8	400.7	372.1	28.60	14.009		
4,500.0	4,465.1	4,507.4	4,440.7	14.4	15.8	-108.72	-379.0	410.3	411.4	382.0	29.38	14.002		
4,600.0	4,564.3	4,606.5	4,537.5	14.7	16.2	-107.63	-395.2	423.9	422.1	392.0	30.15	14.003		
4,661.2	4,625.0	4,667.2	4,596.7	14.9	16.5	-106.99	-405.2	432.2	428.8	398.2	30.61	14.007		
4,700.0	4,663.5	4,705.6	4,634.3	15.1	16.7	-106.64	-411.5	437.4	433.0	402.1	30.89	14.016		
4,800.0	4,763.0	4,804.5	4,730.9	15.3	17.2	-105.47	-427.7	451.0	443.2	411.7	31.53	14.059		

CC - Min centre to center distance or convergent point, SF - min separation factor, ES - min ellipse separation

Company:	Synergy Resources	Local Co-ordinate Reference:	Well SRC Evans P-26-23-14NHZ
Project:	SEC.26-T5N-R66W	TVD Reference:	WELL @ 4762.0ft (RKB - 15')
Reference Site:	SRC Evans Center Pad Sec.26-T5N-R66W	MD Reference:	WELL @ 4762.0ft (RKB - 15')
Site Error:	0.0ft	North Reference:	True
Reference Well:	SRC Evans P-26-23-14NHZ	Survey Calculation Method:	Minimum Curvature
Well Error:	0.0ft	Output errors are at	2.00 sigma
Reference Wellbore	Wellbore #1	Database:	Landmark
Reference Design:	Plan #1 (10-27-14)	Offset TVD Reference:	Offset Datum

Offset Design												Offset Site Error:	0.0 ft
Survey Program: 0-MWD												Offset Well Error:	0.0 ft
Reference		Offset		Semi Major Axis			Distance						Warning
Measured Depth (ft)	Vertical Depth (ft)	Measured Depth (ft)	Vertical Depth (ft)	Reference (ft)	Offset (ft)	Highside Toolface (°)	Offset Wellbore Centre +N/-S (ft)	+E/-W (ft)	Between Centres (ft)	Between Ellipses (ft)	Minimum Separation (ft)	Separation Factor	
4,900.0	4,862.7	4,903.1	4,827.3	15.4	17.6	-103.93	-443.8	464.5	452.9	420.8	32.11	14.106	
5,000.0	4,962.7	5,001.3	4,923.2	15.6	18.1	-102.06	-459.9	477.9	462.2	429.6	32.62	14.171	
5,037.3	5,000.0	5,037.8	4,958.8	15.6	18.3	75.36	-465.9	482.9	465.7	432.9	32.79	14.201	
5,100.0	5,062.7	5,099.1	5,018.6	15.7	18.5	76.80	-475.9	491.3	471.6	438.6	33.07	14.262	
5,200.0	5,162.7	5,196.7	5,114.1	15.8	19.0	79.03	-491.9	504.7	481.8	448.3	33.47	14.394	
5,300.0	5,262.7	5,294.4	5,209.5	16.0	19.5	81.17	-507.9	518.0	492.6	458.8	33.85	14.555	
5,400.0	5,362.7	5,392.1	5,305.0	16.1	19.9	83.21	-524.0	531.4	504.2	469.9	34.20	14.740	
5,500.0	5,462.7	5,491.3	5,401.8	16.2	20.4	85.19	-540.2	544.9	516.3	481.7	34.54	14.949	
5,600.0	5,562.7	5,601.4	5,509.9	16.3	20.7	87.06	-556.2	558.4	527.6	492.8	34.78	15.171	
5,700.0	5,662.7	5,713.0	5,620.2	16.5	21.0	88.51	-569.2	569.2	536.9	501.9	35.01	15.336	
5,800.0	5,762.7	5,825.8	5,732.3	16.6	21.3	89.57	-579.0	577.4	544.1	508.8	35.26	15.432	
5,900.0	5,862.7	5,939.4	5,845.6	16.7	21.5	90.24	-585.4	582.8	548.8	513.3	35.51	15.454	
6,000.0	5,962.7	6,053.5	5,959.7	16.9	21.7	90.55	-588.4	585.2	551.0	515.2	35.79	15.397	
6,100.0	6,062.7	6,158.6	6,064.7	17.0	21.8	90.58	-588.6	585.4	551.1	515.1	36.06	15.282	
6,191.1	6,153.8	6,249.7	6,155.8	17.1	21.9	90.57	-588.6	585.4	551.1	514.8	36.31	15.179	
6,200.0	6,162.7	6,258.7	6,164.8	17.2	21.9	90.70	-588.5	585.4	551.1	514.8	36.35	15.164	
6,250.0	6,212.6	6,309.1	6,215.2	17.2	22.0	90.69	-586.0	585.4	551.1	514.7	36.44	15.125	
6,300.0	6,262.3	6,359.6	6,265.3	17.2	22.0	90.67	-579.9	585.4	551.1	514.7	36.47	15.113	
6,350.0	6,311.4	6,410.0	6,314.8	17.2	22.0	90.64	-570.3	585.4	551.1	514.7	36.44	15.125	
6,400.0	6,359.7	6,460.5	6,363.5	17.2	21.9	90.61	-557.3	585.3	551.1	514.8	36.35	15.161	
6,450.0	6,407.1	6,510.9	6,411.1	17.1	21.8	90.58	-540.8	585.3	551.1	514.9	36.21	15.219	
6,500.0	6,453.2	6,561.3	6,457.5	17.0	21.7	90.55	-521.1	585.3	551.1	515.1	36.03	15.296	
6,550.0	6,497.9	6,611.6	6,502.3	17.0	21.6	90.52	-498.1	585.2	551.1	515.3	35.81	15.389	
6,600.0	6,540.8	6,662.0	6,545.4	16.8	21.5	90.48	-472.1	585.2	551.1	515.6	35.57	15.495	
6,650.0	6,581.9	6,712.3	6,586.5	16.7	21.3	90.44	-443.2	585.1	551.1	515.8	35.30	15.611	
6,700.0	6,620.9	6,762.5	6,625.5	16.6	21.2	90.40	-411.4	585.0	551.1	516.1	35.03	15.731	
6,750.0	6,657.7	6,812.8	6,662.1	16.5	21.0	90.35	-377.0	584.9	551.1	516.3	34.77	15.850	
6,800.0	6,691.9	6,863.0	6,696.2	16.4	20.8	90.31	-340.2	584.9	551.1	516.6	34.52	15.964	
6,850.0	6,723.6	6,913.2	6,727.6	16.3	20.6	90.26	-301.0	584.8	551.1	516.8	34.31	16.064	
6,900.0	6,752.5	6,963.4	6,756.2	16.3	20.4	90.21	-259.8	584.7	551.1	517.0	34.13	16.146	
6,950.0	6,778.4	7,013.5	6,781.8	16.3	20.3	90.16	-216.8	584.6	551.1	517.1	34.01	16.202	
7,000.0	6,801.4	7,063.6	6,804.3	16.3	20.1	90.11	-172.0	584.5	551.1	517.1	33.96	16.228	
7,050.0	6,821.1	7,113.6	6,823.7	16.3	19.9	90.06	-125.9	584.4	551.1	517.1	33.98	16.217	
7,100.0	6,837.6	7,163.6	6,839.7	16.4	19.7	90.01	-78.5	584.2	551.1	517.0	34.09	16.168	
7,150.0	6,850.8	7,213.6	6,852.4	16.6	19.6	89.96	-30.2	584.1	551.1	516.8	34.28	16.077	
7,200.0	6,860.6	7,263.6	6,861.7	16.8	19.4	89.91	18.9	584.0	551.1	516.5	34.56	15.946	
7,235.3	6,865.4	7,298.9	6,866.2	16.9	19.3	89.87	53.9	583.9	551.1	516.3	34.82	15.829	
7,250.0	6,866.9	7,313.5	6,867.6	17.0	19.3	89.85	68.5	583.9	551.1	516.2	34.93	15.776	
7,300.0	6,869.8	7,363.4	6,869.9	17.3	19.2	89.80	118.3	583.8	551.1	515.7	35.39	15.571	
7,316.1	6,870.0	7,379.5	6,870.0	17.4	19.1	89.79	134.4	583.8	551.1	515.5	35.56	15.498	
7,400.0	6,870.0	7,463.4	6,870.0	18.0	19.0	89.79	218.2	583.6	551.1	514.5	36.60	15.056	
7,500.0	6,870.0	7,563.4	6,870.0	18.9	19.3	89.79	318.2	583.3	551.1	512.9	38.14	14.448	
7,600.0	6,870.0	7,663.4	6,870.0	19.9	20.1	89.79	418.2	583.1	551.1	511.1	39.99	13.780	
7,700.0	6,870.0	7,763.4	6,870.0	21.1	21.2	89.79	518.2	582.9	551.1	509.0	42.11	13.087	
7,800.0	6,870.0	7,863.4	6,870.0	22.3	22.4	89.79	618.2	582.6	551.1	506.6	44.46	12.395	
7,900.0	6,870.0	7,963.4	6,870.0	23.7	23.6	89.79	718.2	582.4	551.1	504.1	47.00	11.724	
8,000.0	6,870.0	8,063.4	6,870.0	25.1	25.0	89.79	818.2	582.2	551.1	501.4	49.72	11.084	
8,100.0	6,870.0	8,163.4	6,870.0	26.6	26.4	89.79	918.2	582.0	551.1	498.5	52.57	10.482	
8,200.0	6,870.0	8,263.4	6,870.0	28.1	27.9	89.79	1,018.2	581.7	551.1	495.5	55.54	9.921	
8,300.0	6,870.0	8,363.4	6,870.0	29.7	29.4	89.79	1,118.2	581.5	551.1	492.5	58.62	9.401	
8,400.0	6,870.0	8,463.4	6,870.0	31.3	30.9	89.79	1,218.2	581.3	551.1	489.3	61.78	8.920	
8,500.0	6,870.0	8,563.4	6,870.0	33.0	32.5	89.79	1,318.2	581.0	551.1	486.1	65.01	8.476	

CC - Min centre to center distance or convergent point, SF - min separation factor, ES - min ellipse separation

Company:	Synergy Resources	Local Co-ordinate Reference:	Well SRC Evans P-26-23-14NHZ
Project:	SEC.26-T5N-R66W	TVD Reference:	WELL @ 4762.0ft (RKB - 15')
Reference Site:	SRC Evans Center Pad Sec.26-T5N-R66W	MD Reference:	WELL @ 4762.0ft (RKB - 15')
Site Error:	0.0ft	North Reference:	True
Reference Well:	SRC Evans P-26-23-14NHZ	Survey Calculation Method:	Minimum Curvature
Well Error:	0.0ft	Output errors are at	2.00 sigma
Reference Wellbore	Wellbore #1	Database:	Landmark
Reference Design:	Plan #1 (10-27-14)	Offset TVD Reference:	Offset Datum

Offset Design												Offset Site Error:	0.0ft
Survey Program: 0-MWMD												Offset Well Error:	0.0ft
Reference		Offset		Semi Major Axis			Distance						Warning
Measured Depth (ft)	Vertical Depth (ft)	Measured Depth (ft)	Vertical Depth (ft)	Reference (ft)	Offset (ft)	Highside Toolface (°)	Offset Wellbore Centre +N/-S (ft)	+E/-W (ft)	Between Centres (ft)	Between Ellipses (ft)	Minimum Separation (ft)	Separation Factor	
8,600.0	6,870.0	8,663.4	6,870.0	34.6	34.2	89.79	1,418.2	580.8	551.1	482.8	68.31	8.067	
8,700.0	6,870.0	8,763.4	6,870.0	36.3	35.8	89.79	1,518.2	580.6	551.1	479.4	71.66	7.690	
8,800.0	6,870.0	8,863.4	6,870.0	38.1	37.5	89.79	1,618.2	580.4	551.1	476.0	75.06	7.341	
8,900.0	6,870.0	8,963.4	6,870.0	39.8	39.2	89.79	1,718.2	580.1	551.1	472.6	78.50	7.020	
9,000.0	6,870.0	9,063.4	6,870.0	41.6	40.9	89.79	1,818.2	579.9	551.1	469.1	81.98	6.722	
9,100.0	6,870.0	9,163.4	6,870.0	43.3	42.6	89.79	1,918.2	579.7	551.1	465.6	85.48	6.446	
9,200.0	6,870.0	9,263.4	6,870.0	45.1	44.4	89.79	2,018.2	579.4	551.1	462.0	89.02	6.190	
9,300.0	6,870.0	9,363.4	6,870.0	46.9	46.1	89.79	2,118.2	579.2	551.1	458.5	92.58	5.952	
9,400.0	6,870.0	9,463.4	6,870.0	48.7	47.9	89.79	2,218.2	579.0	551.0	454.9	96.16	5.730	
9,500.0	6,870.0	9,563.4	6,870.0	50.5	49.7	89.79	2,318.2	578.7	551.0	451.3	99.76	5.524	
9,600.0	6,870.0	9,663.4	6,870.0	52.4	51.5	89.79	2,418.2	578.5	551.0	447.7	103.38	5.330	
9,700.0	6,870.0	9,763.4	6,870.0	54.2	53.2	89.79	2,518.2	578.3	551.0	444.0	107.01	5.149	
9,800.0	6,870.0	9,863.4	6,870.0	56.0	55.1	89.79	2,618.2	578.1	551.0	440.4	110.66	4.979	
9,900.0	6,870.0	9,963.4	6,870.0	57.9	56.9	89.79	2,718.2	577.8	551.0	436.7	114.32	4.820	
10,000.0	6,870.0	10,063.4	6,870.0	59.7	58.7	89.79	2,818.2	577.6	551.0	433.0	118.00	4.670	
10,100.0	6,870.0	10,163.4	6,870.0	61.5	60.5	89.79	2,918.2	577.4	551.0	429.4	121.68	4.529	
10,200.0	6,870.0	10,263.4	6,870.0	63.4	62.3	89.79	3,018.2	577.1	551.0	425.7	125.37	4.395	
10,300.0	6,870.0	10,363.4	6,870.0	65.3	64.2	89.79	3,118.2	576.9	551.0	422.0	129.07	4.269	
10,400.0	6,870.0	10,463.4	6,870.0	67.1	66.0	89.79	3,218.2	576.7	551.0	418.2	132.78	4.150	
10,500.0	6,870.0	10,563.4	6,870.0	69.0	67.9	89.79	3,318.2	576.4	551.0	414.5	136.50	4.037	
10,600.0	6,870.0	10,663.4	6,870.0	70.9	69.7	89.79	3,418.2	576.2	551.0	410.8	140.22	3.930	
10,700.0	6,870.0	10,763.4	6,870.0	72.7	71.6	89.79	3,518.2	576.0	551.0	407.1	143.95	3.828	
10,800.0	6,870.0	10,863.4	6,870.0	74.6	73.4	89.79	3,618.2	575.8	551.0	403.3	147.69	3.731	
10,900.0	6,870.0	10,963.4	6,870.0	76.5	75.3	89.79	3,718.2	575.5	551.0	399.6	151.43	3.639	
11,000.0	6,870.0	11,063.4	6,870.0	78.4	77.1	89.79	3,818.2	575.3	551.0	395.8	155.17	3.551	
11,100.0	6,870.0	11,163.4	6,870.0	80.2	79.0	89.79	3,918.2	575.1	551.0	392.1	158.93	3.467	
11,200.0	6,870.0	11,263.4	6,870.0	82.1	80.9	89.79	4,018.2	574.8	551.0	388.3	162.68	3.387	
11,300.0	6,870.0	11,363.4	6,870.0	84.0	82.8	89.79	4,118.2	574.6	551.0	384.6	166.44	3.311	
11,400.0	6,870.0	11,463.4	6,870.0	85.9	84.6	89.79	4,218.2	574.4	551.0	380.8	170.20	3.237	
11,500.0	6,870.0	11,563.4	6,870.0	87.8	86.5	89.79	4,318.2	574.2	551.0	377.0	173.97	3.167	
11,600.0	6,870.0	11,663.4	6,870.0	89.7	88.4	89.79	4,418.2	573.9	551.0	373.3	177.74	3.100	
11,700.0	6,870.0	11,763.4	6,870.0	91.5	90.3	89.79	4,518.2	573.7	551.0	369.5	181.51	3.036	
11,800.0	6,870.0	11,863.4	6,870.0	93.4	92.1	89.79	4,618.2	573.5	551.0	365.7	185.29	2.974	
11,900.0	6,870.0	11,963.4	6,870.0	95.3	94.0	89.79	4,718.2	573.2	551.0	361.9	189.06	2.914	
12,000.0	6,870.0	12,063.4	6,870.0	97.2	95.9	89.79	4,818.2	573.0	551.0	358.1	192.84	2.857	
12,100.0	6,870.0	12,163.4	6,870.0	99.1	97.8	89.79	4,918.2	572.8	551.0	354.4	196.63	2.802	
12,200.0	6,870.0	12,263.4	6,870.0	101.0	99.7	89.79	5,018.2	572.5	551.0	350.6	200.41	2.749	
12,300.0	6,870.0	12,363.4	6,870.0	102.9	101.6	89.79	5,118.2	572.3	551.0	346.8	204.20	2.698	
12,400.0	6,870.0	12,463.4	6,870.0	104.8	103.4	89.79	5,218.2	572.1	551.0	343.0	207.99	2.649	
12,500.0	6,870.0	12,563.4	6,870.0	106.7	105.3	89.79	5,318.2	571.9	551.0	339.2	211.78	2.602	
12,600.0	6,870.0	12,663.4	6,870.0	108.6	107.2	89.79	5,418.2	571.6	551.0	335.4	215.57	2.556	
12,700.0	6,870.0	12,763.4	6,870.0	110.5	109.1	89.79	5,518.2	571.4	551.0	331.6	219.37	2.512	
12,800.0	6,870.0	12,863.4	6,870.0	112.4	111.0	89.79	5,618.2	571.2	551.0	327.8	223.17	2.469	
12,900.0	6,870.0	12,963.4	6,870.0	114.3	112.9	89.79	5,718.2	570.9	551.0	324.0	226.96	2.428	
13,000.0	6,870.0	13,063.4	6,870.0	116.2	114.8	89.79	5,818.2	570.7	551.0	320.2	230.76	2.388	
13,100.0	6,870.0	13,163.4	6,870.0	118.1	116.7	89.79	5,918.2	570.5	551.0	316.4	234.57	2.349	
13,200.0	6,870.0	13,263.4	6,870.0	120.0	118.6	89.79	6,018.2	570.2	551.0	312.6	238.37	2.311	
13,300.0	6,870.0	13,363.4	6,870.0	121.9	120.5	89.79	6,118.2	570.0	551.0	308.8	242.17	2.275	
13,400.0	6,870.0	13,463.4	6,870.0	123.8	122.4	89.79	6,218.2	569.8	551.0	305.0	245.98	2.240	
13,500.0	6,870.0	13,563.4	6,870.0	125.7	124.3	89.79	6,318.2	569.6	551.0	301.2	249.78	2.206	
13,600.0	6,870.0	13,663.4	6,870.0	127.6	126.2	89.79	6,418.2	569.3	551.0	297.4	253.59	2.173	
13,700.0	6,870.0	13,763.4	6,870.0	129.5	128.1	89.79	6,518.2	569.1	551.0	293.6	257.40	2.140	

CC - Min centre to center distance or convergent point, SF - min separation factor, ES - min ellipse separation

Company:	Synergy Resources	Local Co-ordinate Reference:	Well SRC Evans P-26-23-14NHZ
Project:	SEC.26-T5N-R66W	TVD Reference:	WELL @ 4762.0ft (RKB - 15')
Reference Site:	SRC Evans Center Pad Sec.26-T5N-R66W	MD Reference:	WELL @ 4762.0ft (RKB - 15')
Site Error:	0.0ft	North Reference:	True
Reference Well:	SRC Evans P-26-23-14NHZ	Survey Calculation Method:	Minimum Curvature
Well Error:	0.0ft	Output errors are at	2.00 sigma
Reference Wellbore	Wellbore #1	Database:	Landmark
Reference Design:	Plan #1 (10-27-14)	Offset TVD Reference:	Offset Datum

Offset Design												Offset Site Error:	0.0 ft
Survey Program: 0-MWD												Offset Well Error:	0.0 ft
Reference		Offset		Semi Major Axis			Distance						Warning
Measured Depth (ft)	Vertical Depth (ft)	Measured Depth (ft)	Vertical Depth (ft)	Reference (ft)	Offset (ft)	Highside Toolface (°)	Offset Wellbore Centre +N/-S (ft)	+E/-W (ft)	Between Centres (ft)	Between Ellipses (ft)	Minimum Separation (ft)	Separation Factor	
13,800.0	6,870.0	13,863.4	6,870.0	131.4	130.0	89.79	6,618.2	568.9	551.0	289.7	261.21	2.109	
13,900.0	6,870.0	13,963.4	6,870.0	133.3	131.9	89.79	6,718.2	568.6	550.9	285.9	265.02	2.079	
14,000.0	6,870.0	14,063.4	6,870.0	135.3	133.8	89.79	6,818.2	568.4	550.9	282.1	268.83	2.049	
14,100.0	6,870.0	14,163.4	6,870.0	137.2	135.7	89.79	6,918.2	568.2	550.9	278.3	272.64	2.021	
14,200.0	6,870.0	14,263.4	6,870.0	139.1	137.6	89.79	7,018.2	568.0	550.9	274.5	276.45	1.993	
14,300.0	6,870.0	14,363.4	6,870.0	141.0	139.5	89.79	7,118.2	567.7	550.9	270.7	280.27	1.966	
14,400.0	6,870.0	14,463.4	6,870.0	142.9	141.4	89.79	7,218.2	567.5	550.9	266.9	284.08	1.939	
14,500.0	6,870.0	14,563.4	6,870.0	144.8	143.3	89.79	7,318.2	567.3	550.9	263.0	287.90	1.914	
14,600.0	6,870.0	14,663.4	6,870.0	146.7	145.2	89.79	7,418.2	567.0	550.9	259.2	291.71	1.889	
14,700.0	6,870.0	14,763.4	6,870.0	148.6	147.1	89.79	7,518.2	566.8	550.9	255.4	295.53	1.864	
14,800.0	6,870.0	14,863.4	6,870.0	150.5	149.0	89.79	7,618.2	566.6	550.9	251.6	299.35	1.840	
14,900.0	6,870.0	14,963.4	6,870.0	152.4	150.9	89.79	7,718.2	566.3	550.9	247.8	303.16	1.817	
15,000.0	6,870.0	15,063.4	6,870.0	154.3	152.8	89.79	7,818.2	566.1	550.9	243.9	306.98	1.795	
15,100.0	6,870.0	15,163.4	6,870.0	156.3	154.7	89.79	7,918.2	565.9	550.9	240.1	310.80	1.773	
15,200.0	6,870.0	15,263.4	6,870.0	158.2	156.6	89.79	8,018.2	565.7	550.9	236.3	314.62	1.751	
15,300.0	6,870.0	15,363.4	6,870.0	160.1	158.5	89.79	8,118.2	565.4	550.9	232.5	318.44	1.730	
15,400.0	6,870.0	15,463.4	6,870.0	162.0	160.5	89.79	8,218.2	565.2	550.9	228.7	322.26	1.710	
15,500.0	6,870.0	15,563.4	6,870.0	163.9	162.4	89.79	8,318.2	565.0	550.9	224.8	326.08	1.689	
15,600.0	6,870.0	15,663.4	6,870.0	165.8	164.3	89.79	8,418.2	564.7	550.9	221.0	329.91	1.670	
15,700.0	6,870.0	15,763.4	6,870.0	167.7	166.2	89.79	8,518.2	564.5	550.9	217.2	333.73	1.651	
15,800.0	6,870.0	15,863.4	6,870.0	169.6	168.1	89.79	8,618.2	564.3	550.9	213.4	337.55	1.632	
15,900.0	6,870.0	15,963.4	6,870.0	171.5	170.0	89.79	8,718.2	564.0	550.9	209.5	341.37	1.614	
16,000.0	6,870.0	16,063.4	6,870.0	173.5	171.9	89.79	8,818.2	563.8	550.9	205.7	345.20	1.596	
16,100.0	6,870.0	16,163.4	6,870.0	175.4	173.8	89.79	8,918.2	563.6	550.9	201.9	349.02	1.578	
16,200.0	6,870.0	16,263.4	6,870.0	177.3	175.7	89.79	9,018.2	563.4	550.9	198.1	352.85	1.561	
16,300.0	6,870.0	16,363.4	6,870.0	179.2	177.6	89.79	9,118.2	563.1	550.9	194.2	356.67	1.545	
16,400.0	6,870.0	16,463.4	6,870.0	181.1	179.5	89.79	9,218.2	562.9	550.9	190.4	360.50	1.528	
16,500.0	6,870.0	16,563.4	6,870.0	183.0	181.5	89.79	9,318.2	562.7	550.9	186.6	364.32	1.512	
16,600.0	6,870.0	16,663.4	6,870.0	184.9	183.4	89.79	9,418.2	562.4	550.9	182.7	368.15	1.496 Level 3	
16,633.9	6,870.0	16,697.3	6,870.0	185.6	184.0	89.79	9,452.1	562.4	550.9	181.4	369.45	1.491 Level 3	
16,660.6	6,870.0	16,701.9	6,870.0	186.1	184.1	89.79	9,456.8	562.4	551.3	181.3	370.05	1.490 Level 3, SF	

CC - Min centre to center distance or convergent point, SF - min separation factor, ES - min ellipse separation

Company:	Synergy Resources	Local Co-ordinate Reference:	Well SRC Evans P-26-23-14NHZ
Project:	SEC.26-T5N-R66W	TVD Reference:	WELL @ 4762.0ft (RKB - 15')
Reference Site:	SRC Evans Center Pad Sec.26-T5N-R66W	MD Reference:	WELL @ 4762.0ft (RKB - 15')
Site Error:	0.0ft	North Reference:	True
Reference Well:	SRC Evans P-26-23-14NHZ	Survey Calculation Method:	Minimum Curvature
Well Error:	0.0ft	Output errors are at	2.00 sigma
Reference Wellbore	Wellbore #1	Database:	Landmark
Reference Design:	Plan #1 (10-27-14)	Offset TVD Reference:	Offset Datum

Offset Design												Offset Site Error:	0.0 ft
SRC Evans Center Pad Sec.26-T5N-R66W - SRC Evans O-26-23-14CHZ - Wellbore #1 - Plan #1 (10-2												Offset Well Error:	0.0 ft
Survey Program: 0-MWD													
Reference		Offset		Semi Major Axis			Distance						
Measured Depth (ft)	Vertical Depth (ft)	Measured Depth (ft)	Vertical Depth (ft)	Reference (ft)	Offset (ft)	Highside Toolface (°)	Offset Wellbore Centre +N/-S (ft)	+E/-W (ft)	Between Centres (ft)	Between Ellipses (ft)	Minimum Separation (ft)	Separation Factor	Warning
5,000.0	4,962.7	4,961.6	4,876.9	15.6	18.8	107.70	-417.0	-610.2	671.1	639.0	32.07	20.924	
5,037.3	5,000.0	4,998.1	4,912.5	15.6	19.0	-76.10	-422.1	-616.3	676.0	643.8	32.26	20.955	
5,100.0	5,062.7	5,059.3	4,972.2	15.7	19.3	-77.00	-430.6	-626.5	684.3	651.8	32.54	21.032	
5,200.0	5,162.7	5,156.9	5,067.5	15.8	19.8	-78.40	-444.1	-642.8	697.9	665.0	32.95	21.183	
5,300.0	5,262.7	5,254.5	5,162.7	16.0	20.2	-79.75	-457.7	-659.2	711.9	678.6	33.35	21.348	
5,400.0	5,362.7	5,352.1	5,258.0	16.1	20.7	-81.05	-471.3	-675.5	726.3	692.5	33.74	21.525	
5,500.0	5,462.7	5,449.7	5,353.3	16.2	21.2	-82.29	-484.8	-691.8	741.0	706.9	34.13	21.714	
5,600.0	5,562.7	5,547.3	5,448.5	16.3	21.6	-83.49	-498.4	-708.1	756.1	721.6	34.50	21.913	
5,700.0	5,662.7	5,644.9	5,543.8	16.5	22.1	-84.64	-511.9	-724.4	771.4	736.6	34.88	22.119	
5,800.0	5,762.7	5,742.5	5,639.1	16.6	22.6	-85.75	-525.5	-740.8	787.1	751.9	35.25	22.333	

COMPASS 2003.21 Build 46

Company:	Synergy Resources	Local Co-ordinate Reference:	Well SRC Evans P-26-23-14NHZ
Project:	SEC.26-T5N-R66W	TVD Reference:	WELL @ 4762.0ft (RKB - 15')
Reference Site:	SRC Evans Center Pad Sec.26-T5N-R66W	MD Reference:	WELL @ 4762.0ft (RKB - 15')
Site Error:	0.0ft	North Reference:	True
Reference Well:	SRC Evans P-26-23-14NHZ	Survey Calculation Method:	Minimum Curvature
Well Error:	0.0ft	Output errors are at	2.00 sigma
Reference Wellbore	Wellbore #1	Database:	Landmark
Reference Design:	Plan #1 (10-27-14)	Offset TVD Reference:	Offset Datum

Offset Design													Offset Site Error:	0.0 ft
Survey Program: 0-MWD													Offset Well Error:	0.0 ft
Reference		Offset		Semi Major Axis			Distance							Warning
Measured Depth (ft)	Vertical Depth (ft)	Measured Depth (ft)	Vertical Depth (ft)	Reference (ft)	Offset (ft)	Highside Toolface (°)	Offset Wellbore Centre +N/-S (ft)	+E/-W (ft)	Between Centres (ft)	Between Ellipses (ft)	Minimum Separation (ft)	Separation Factor		
0.0	0.0	1.0	1.0	0.0	0.0	0.00	67.4	0.0	67.4	67.4	0.00	N/A		
100.0	100.0	101.0	101.0	0.1	0.1	0.00	67.4	0.0	67.4	67.2	0.23	296.869		
200.0	200.0	201.0	201.0	0.3	0.3	0.00	67.4	0.0	67.4	66.7	0.68	99.614 CC, ES		
300.0	300.0	301.0	301.0	0.5	0.6	-176.72	67.4	0.0	69.1	68.0	1.11	62.284		
400.0	399.8	400.8	400.8	0.8	0.8	-176.94	67.4	0.0	74.4	72.8	1.54	48.161		
500.0	499.5	500.5	500.5	1.0	1.0	-177.25	67.4	0.0	83.1	81.1	1.99	41.728		
576.1	575.0	576.0	576.0	1.2	1.2	-177.51	67.4	0.0	92.0	89.7	2.33	39.412		
600.0	598.7	599.7	599.7	1.3	1.2	-177.60	67.4	0.0	95.1	92.7	2.44	38.991		
700.0	697.9	698.9	698.9	1.6	1.5	-177.89	67.4	0.0	108.2	105.3	2.89	37.504		
800.0	797.0	798.0	798.0	1.9	1.7	-178.11	67.4	0.0	121.3	118.0	3.34	36.358		
900.0	896.1	901.4	901.4	2.2	1.9	-177.99	65.8	0.8	132.8	129.0	3.77	35.241		
1,000.0	995.3	1,005.6	1,005.5	2.6	2.1	-177.26	60.7	3.2	141.0	136.9	4.19	33.687		
1,100.0	1,094.4	1,110.2	1,109.6	2.9	2.3	-175.97	52.2	7.2	146.0	141.4	4.63	31.569		
1,200.0	1,193.6	1,214.4	1,212.9	3.2	2.5	-174.11	40.4	12.8	147.8	142.7	5.08	29.076		
1,300.0	1,292.7	1,314.2	1,311.8	3.6	2.8	-172.09	27.7	18.8	148.5	143.0	5.55	26.735		
1,400.0	1,391.8	1,414.1	1,410.7	3.9	3.1	-170.10	15.0	24.8	149.4	143.3	6.04	24.719		
1,500.0	1,491.0	1,514.0	1,509.5	4.2	3.4	-168.13	2.4	30.9	150.4	143.9	6.55	22.973		
1,600.0	1,590.1	1,613.8	1,608.4	4.6	3.7	-166.19	-10.3	36.9	151.6	144.6	7.07	21.452		
1,700.0	1,689.2	1,713.7	1,707.3	4.9	4.0	-164.28	-23.0	42.9	153.0	145.4	7.61	20.121		
1,800.0	1,788.4	1,813.5	1,806.2	5.2	4.3	-162.41	-35.6	48.9	154.6	146.4	8.16	18.949		
1,900.0	1,887.5	1,913.4	1,905.0	5.6	4.6	-160.58	-48.3	54.9	156.3	147.6	8.73	17.913		
2,000.0	1,986.7	2,013.3	2,003.9	5.9	5.0	-158.79	-61.0	60.9	158.2	148.9	9.31	16.994		
2,100.0	2,085.8	2,113.1	2,102.8	6.3	5.3	-157.04	-73.7	66.9	160.2	150.3	9.91	16.177		
2,200.0	2,184.9	2,213.0	2,201.6	6.6	5.6	-155.34	-86.3	72.9	162.4	151.9	10.51	15.447		
2,300.0	2,284.1	2,312.8	2,300.5	6.9	6.0	-153.68	-99.0	79.0	164.7	153.6	11.14	14.793		
2,400.0	2,383.2	2,412.7	2,399.4	7.3	6.3	-152.08	-111.7	85.0	167.2	155.4	11.77	14.206		
2,500.0	2,482.4	2,512.6	2,498.3	7.6	6.6	-150.51	-124.4	91.0	169.8	157.3	12.41	13.678		
2,600.0	2,581.5	2,612.4	2,597.1	8.0	7.0	-149.00	-137.0	97.0	172.5	159.4	13.06	13.202		
2,700.0	2,680.6	2,712.3	2,696.0	8.3	7.3	-147.54	-149.7	103.0	175.3	161.6	13.72	12.771		
2,800.0	2,779.8	2,812.2	2,794.9	8.6	7.7	-146.12	-162.4	109.0	178.2	163.8	14.39	12.381		
2,900.0	2,878.9	2,912.0	2,893.7	9.0	8.0	-144.75	-175.0	115.0	181.2	166.2	15.07	12.027		
3,000.0	2,978.1	3,011.9	2,992.6	9.3	8.4	-143.42	-187.7	121.1	184.4	168.6	15.75	11.705		
3,100.0	3,077.2	3,111.7	3,091.5	9.6	8.7	-142.14	-200.4	127.1	187.6	171.2	16.44	11.412		
3,200.0	3,176.3	3,211.6	3,190.4	10.0	9.1	-140.90	-213.1	133.1	190.9	173.8	17.13	11.144		
3,300.0	3,275.5	3,311.5	3,289.2	10.3	9.4	-139.71	-225.7	139.1	194.3	176.5	17.83	10.899		
3,400.0	3,374.6	3,411.3	3,388.1	10.7	9.8	-138.56	-238.4	145.1	197.8	179.3	18.53	10.675		
3,500.0	3,473.8	3,511.2	3,487.0	11.0	10.1	-137.44	-251.1	151.1	201.4	182.1	19.23	10.470		
3,600.0	3,572.9	3,611.0	3,585.8	11.3	10.5	-136.37	-263.8	157.1	205.0	185.1	19.94	10.281		
3,700.0	3,672.0	3,710.9	3,684.7	11.7	10.8	-135.33	-276.4	163.1	208.7	188.1	20.65	10.108		
3,800.0	3,771.2	3,810.8	3,783.6	12.0	11.1	-134.33	-289.1	169.2	212.5	191.1	21.36	9.948		
3,900.0	3,870.3	3,910.6	3,882.5	12.4	11.5	-133.37	-301.8	175.2	216.3	194.3	22.08	9.800		
4,000.0	3,969.5	4,010.5	3,981.3	12.7	11.8	-132.44	-314.4	181.2	220.2	197.4	22.79	9.664		
4,100.0	4,068.6	4,110.3	4,080.2	13.0	12.2	-131.54	-327.1	187.2	224.2	200.7	23.51	9.538		
4,200.0	4,167.7	4,210.2	4,179.1	13.4	12.6	-130.68	-339.8	193.2	228.2	204.0	24.22	9.421		
4,300.0	4,266.9	4,310.1	4,277.9	13.7	12.9	-129.84	-352.5	199.2	232.2	207.3	24.94	9.313		
4,400.0	4,366.0	4,409.9	4,376.8	14.1	13.3	-129.03	-365.1	205.2	236.3	210.7	25.66	9.212		
4,500.0	4,465.1	4,509.8	4,475.7	14.4	13.6	-128.25	-377.8	211.2	240.5	214.1	26.37	9.119		
4,600.0	4,564.3	4,609.7	4,574.6	14.7	14.0	-127.50	-390.5	217.3	244.7	217.6	27.09	9.032		
4,661.2	4,625.0	4,670.8	4,635.1	14.9	14.2	-127.05	-398.2	220.9	247.3	219.7	27.53	8.981		
4,700.0	4,663.5	4,709.5	4,673.4	15.1	14.3	-126.75	-403.1	223.3	248.8	221.0	27.80	8.949		
4,800.0	4,763.0	4,809.3	4,772.2	15.3	14.7	-125.51	-415.8	229.3	251.2	222.8	28.46	8.826		
4,900.0	4,862.7	4,909.0	4,870.9	15.4	15.0	-123.63	-428.5	235.3	251.9	222.7	29.15	8.640		

CC - Min centre to center distance or convergent point, SF - min separation factor, ES - min ellipse separation

Company:	Synergy Resources	Local Co-ordinate Reference:	Well SRC Evans P-26-23-14NHZ
Project:	SEC.26-T5N-R66W	TVD Reference:	WELL @ 4762.0ft (RKB - 15')
Reference Site:	SRC Evans Center Pad Sec.26-T5N-R66W	MD Reference:	WELL @ 4762.0ft (RKB - 15')
Site Error:	0.0ft	North Reference:	True
Reference Well:	SRC Evans P-26-23-14NHZ	Survey Calculation Method:	Minimum Curvature
Well Error:	0.0ft	Output errors are at	2.00 sigma
Reference Wellbore	Wellbore #1	Database:	Landmark
Reference Design:	Plan #1 (10-27-14)	Offset TVD Reference:	Offset Datum

Offset Design												Offset Site Error:	0.0 ft
Survey Program: 0-MWD												Offset Well Error:	0.0 ft
Reference		Offset		Semi Major Axis			Distance						
Measured Depth (ft)	Vertical Depth (ft)	Measured Depth (ft)	Vertical Depth (ft)	Reference (ft)	Offset (ft)	Highside Toolface (°)	Offset Wellbore Centre +N/-S (ft)	+E/-W (ft)	Between Centres (ft)	Between Ellipses (ft)	Minimum Separation (ft)	Separation Factor	Warning
5,000.0	4,962.7	5,008.3	4,969.3	15.6	15.4	-121.06	-441.1	241.3	251.0	221.1	29.85	8.407	
5,037.3	5,000.0	5,045.3	5,005.9	15.6	15.5	56.71	-445.8	243.5	250.3	220.2	30.13	8.307	
5,100.0	5,062.7	5,107.4	5,067.3	15.7	15.7	58.70	-453.6	247.2	249.2	218.6	30.58	8.149	
5,200.0	5,162.7	5,206.4	5,165.4	15.8	16.1	61.89	-466.2	253.2	248.2	216.9	31.25	7.940	
5,284.7	5,247.4	5,290.2	5,248.4	15.9	16.4	64.62	-476.8	258.2	247.9	216.1	31.80	7.796	
5,300.0	5,262.7	5,305.4	5,263.4	16.0	16.4	65.11	-478.8	259.2	247.9	216.0	31.89	7.773	
5,400.0	5,362.7	5,404.4	5,361.4	16.1	16.8	68.32	-491.3	265.1	248.4	215.9	32.48	7.647	
5,500.0	5,462.7	5,503.4	5,459.4	16.2	17.1	71.50	-503.9	271.1	249.7	216.7	33.03	7.559	
5,600.0	5,562.7	5,602.4	5,557.5	16.3	17.5	74.65	-516.5	277.0	251.8	218.3	33.54	7.508	
5,700.0	5,662.7	5,701.4	5,655.5	16.5	17.8	77.73	-529.0	283.0	254.6	220.6	34.00	7.489	
5,800.0	5,762.7	5,800.4	5,753.5	16.6	18.2	80.74	-541.6	289.0	258.2	223.8	34.42	7.502	
5,900.0	5,862.7	5,899.4	5,851.5	16.7	18.5	83.66	-554.1	294.9	262.5	227.7	34.80	7.543	
6,000.0	5,962.7	6,000.3	5,951.5	16.9	18.8	86.43	-566.5	300.8	267.3	232.1	35.13	7.609	
6,100.0	6,062.7	6,103.6	6,054.2	17.0	19.1	88.53	-576.2	305.4	271.3	236.0	35.36	7.673	
6,191.1	6,153.8	6,198.2	6,148.6	17.1	19.2	89.79	-582.1	308.2	274.0	238.4	35.59	7.699	
6,200.0	6,162.7	6,207.5	6,157.9	17.2	19.2	90.01	-582.5	308.4	274.1	238.5	35.62	7.698	
6,250.0	6,212.6	6,259.5	6,209.8	17.2	19.3	90.84	-584.4	309.3	275.0	239.4	35.69	7.707	
6,300.0	6,262.3	6,311.2	6,261.5	17.2	19.4	92.26	-585.5	309.8	275.7	240.0	35.69	7.726	
6,350.0	6,311.4	6,362.1	6,312.4	17.2	19.5	94.21	-585.7	309.9	276.4	240.8	35.60	7.763	
6,400.0	6,359.7	6,410.4	6,360.7	17.2	19.5	96.64	-585.7	309.9	277.6	242.2	35.42	7.838	
6,450.0	6,407.1	6,457.8	6,408.1	17.1	19.6	99.54	-585.7	309.9	280.0	244.9	35.13	7.970	
6,500.0	6,453.2	6,503.9	6,454.2	17.0	19.7	102.78	-585.7	309.9	284.1	249.3	34.74	8.177	
6,550.0	6,497.9	6,550.7	6,501.0	17.0	19.7	106.37	-585.5	309.9	290.3	256.0	34.22	8.481	
6,600.0	6,540.8	6,602.6	6,552.8	16.8	19.8	110.20	-582.4	309.9	298.2	264.7	33.56	8.886	
6,650.0	6,581.9	6,656.6	6,606.3	16.7	19.8	113.88	-575.2	309.9	307.7	274.8	32.81	9.378	
6,700.0	6,620.9	6,713.0	6,661.4	16.6	19.7	117.36	-563.3	309.8	318.2	286.3	31.96	9.956	
6,750.0	6,657.7	6,771.9	6,717.8	16.5	19.7	120.64	-546.4	309.8	329.8	298.7	31.05	10.619	
6,800.0	6,691.9	6,833.7	6,775.3	16.4	19.6	123.71	-523.7	309.8	341.9	311.8	30.10	11.360	
6,850.0	6,723.6	6,898.6	6,833.3	16.3	19.5	126.55	-494.6	309.7	354.4	325.3	29.12	12.170	
6,900.0	6,752.5	6,966.9	6,891.2	16.3	19.3	129.16	-458.5	309.6	366.9	338.7	28.15	13.033	
6,950.0	6,778.4	7,038.7	6,948.2	16.3	19.1	131.53	-414.8	309.5	379.0	351.8	27.22	13.923	
7,000.0	6,801.4	7,114.2	7,003.0	16.3	18.9	133.64	-362.9	309.4	390.6	364.2	26.38	14.803	
7,050.0	6,821.1	7,193.5	7,054.3	16.3	18.7	135.48	-302.5	309.3	401.1	375.4	25.68	15.621	
7,100.0	6,837.6	7,276.3	7,100.4	16.4	18.4	137.04	-233.8	309.1	410.4	385.2	25.16	16.314	
7,150.0	6,850.8	7,362.5	7,139.7	16.6	18.3	138.29	-157.2	308.9	418.0	393.2	24.86	16.815	
7,200.0	6,860.6	7,451.4	7,170.3	16.8	18.2	139.22	-73.7	308.7	423.9	399.0	24.84	17.066	
7,250.0	6,866.9	7,542.4	7,190.6	17.0	18.3	139.80	15.0	308.5	427.6	402.5	25.11	17.029	
7,300.0	6,869.8	7,634.7	7,199.6	17.3	18.5	140.04	106.7	308.3	429.1	403.5	25.68	16.708	
7,316.1	6,870.0	7,661.7	7,200.0	17.4	18.6	140.05	133.7	308.3	429.2	403.3	25.92	16.560	
7,400.0	6,870.0	7,745.6	7,200.0	18.0	19.0	140.05	217.6	308.1	429.2	402.4	26.77	16.030	
7,500.0	6,870.0	7,845.6	7,200.0	18.9	19.8	140.05	317.6	307.8	429.2	401.2	27.98	15.336	
7,600.0	6,870.0	7,945.6	7,200.0	19.9	20.7	140.05	417.6	307.6	429.2	399.8	29.40	14.600	
7,700.0	6,870.0	8,045.6	7,200.0	21.1	21.7	140.05	517.6	307.4	429.2	398.2	30.98	13.853	
7,800.0	6,870.0	8,145.6	7,200.0	22.3	22.9	140.05	617.6	307.1	429.2	396.5	32.71	13.120	
7,900.0	6,870.0	8,245.6	7,200.0	23.7	24.1	140.05	717.6	306.9	429.2	394.6	34.57	12.414	
8,000.0	6,870.0	8,345.6	7,200.0	25.1	25.5	140.05	817.6	306.7	429.2	392.6	36.53	11.747	
8,100.0	6,870.0	8,445.6	7,200.0	26.6	26.9	140.05	917.6	306.5	429.2	390.6	38.59	11.121	
8,200.0	6,870.0	8,545.6	7,200.0	28.1	28.3	140.05	1,017.6	306.2	429.2	388.4	40.72	10.539	
8,300.0	6,870.0	8,645.6	7,200.0	29.7	29.9	140.05	1,117.6	306.0	429.2	386.2	42.92	9.999	
8,400.0	6,870.0	8,745.6	7,200.0	31.3	31.4	140.05	1,217.6	305.8	429.2	384.0	45.17	9.501	
8,500.0	6,870.0	8,845.6	7,200.0	33.0	33.0	140.05	1,317.6	305.5	429.2	381.7	47.47	9.040	
8,600.0	6,870.0	8,945.6	7,200.0	34.6	34.7	140.05	1,417.6	305.3	429.2	379.3	49.81	8.615	

CC - Min centre to center distance or convergent point, SF - min separation factor, ES - min ellipse separation

Company:	Synergy Resources	Local Co-ordinate Reference:	Well SRC Evans P-26-23-14NHZ
Project:	SEC.26-T5N-R66W	TVD Reference:	WELL @ 4762.0ft (RKB - 15')
Reference Site:	SRC Evans Center Pad Sec.26-T5N-R66W	MD Reference:	WELL @ 4762.0ft (RKB - 15')
Site Error:	0.0ft	North Reference:	True
Reference Well:	SRC Evans P-26-23-14NHZ	Survey Calculation Method:	Minimum Curvature
Well Error:	0.0ft	Output errors are at	2.00 sigma
Reference Wellbore	Wellbore #1	Database:	Landmark
Reference Design:	Plan #1 (10-27-14)	Offset TVD Reference:	Offset Datum

Offset Design												Offset Site Error:	0.0 ft
Survey Program: 0-MWDD												Offset Well Error:	0.0 ft
Reference		Offset		Semi Major Axis			Distance						Warning
Measured Depth (ft)	Vertical Depth (ft)	Measured Depth (ft)	Vertical Depth (ft)	Reference (ft)	Offset (ft)	Highside Toolface (°)	Offset Wellbore Centre +N/-S (ft)	+E/-W (ft)	Between Centres (ft)	Between Ellipses (ft)	Minimum Separation (ft)	Separation Factor	
8,700.0	6,870.0	9,045.6	7,200.0	36.3	36.3	140.05	1,517.6	305.1	429.2	377.0	52.19	8.223	
8,800.0	6,870.0	9,145.6	7,200.0	38.1	38.0	140.05	1,617.6	304.9	429.2	374.6	54.60	7.860	
8,900.0	6,870.0	9,245.6	7,200.0	39.8	39.7	140.05	1,717.6	304.6	429.2	372.1	57.04	7.524	
9,000.0	6,870.0	9,345.6	7,200.0	41.6	41.4	140.05	1,817.6	304.4	429.2	369.7	59.50	7.213	
9,100.0	6,870.0	9,445.6	7,200.0	43.3	43.2	140.05	1,917.6	304.2	429.2	367.2	61.98	6.924	
9,200.0	6,870.0	9,545.6	7,200.0	45.1	44.9	140.05	2,017.6	303.9	429.2	364.7	64.48	6.656	
9,300.0	6,870.0	9,645.6	7,200.0	46.9	46.7	140.05	2,117.6	303.7	429.2	362.2	66.99	6.406	
9,400.0	6,870.0	9,745.6	7,200.0	48.7	48.5	140.05	2,217.6	303.5	429.1	359.6	69.52	6.173	
9,500.0	6,870.0	9,845.6	7,200.0	50.5	50.2	140.05	2,317.6	303.3	429.1	357.1	72.06	5.955	
9,600.0	6,870.0	9,945.6	7,200.0	52.4	52.0	140.05	2,417.6	303.0	429.1	354.5	74.62	5.751	
9,700.0	6,870.0	10,045.6	7,200.0	54.2	53.8	140.05	2,517.6	302.8	429.1	352.0	77.18	5.560	
9,800.0	6,870.0	10,145.6	7,200.0	56.0	55.7	140.05	2,617.6	302.6	429.1	349.4	79.76	5.381	
9,900.0	6,870.0	10,245.6	7,200.0	57.9	57.5	140.05	2,717.6	302.3	429.1	346.8	82.34	5.212	
10,000.0	6,870.0	10,345.6	7,200.0	59.7	59.3	140.05	2,817.6	302.1	429.1	344.2	84.93	5.053	
10,100.0	6,870.0	10,445.6	7,200.0	61.5	61.1	140.05	2,917.6	301.9	429.1	341.6	87.53	4.903	
10,200.0	6,870.0	10,545.6	7,200.0	63.4	63.0	140.05	3,017.6	301.7	429.1	339.0	90.14	4.761	
10,300.0	6,870.0	10,645.6	7,200.0	65.3	64.8	140.05	3,117.6	301.4	429.1	336.4	92.75	4.627	
10,400.0	6,870.0	10,745.6	7,200.0	67.1	66.7	140.05	3,217.6	301.2	429.1	333.8	95.36	4.500	
10,500.0	6,870.0	10,845.6	7,200.0	69.0	68.5	140.05	3,317.6	301.0	429.1	331.2	97.99	4.380	
10,600.0	6,870.0	10,945.6	7,200.0	70.9	70.4	140.05	3,417.6	300.7	429.1	328.5	100.61	4.265	
10,700.0	6,870.0	11,045.6	7,200.0	72.7	72.2	140.05	3,517.6	300.5	429.1	325.9	103.24	4.157	
10,800.0	6,870.0	11,145.6	7,200.0	74.6	74.1	140.05	3,617.6	300.3	429.1	323.3	105.88	4.053	
10,900.0	6,870.0	11,245.6	7,200.0	76.5	76.0	140.05	3,717.6	300.0	429.1	320.6	108.51	3.955	
11,000.0	6,870.0	11,345.6	7,200.0	78.4	77.8	140.05	3,817.6	299.8	429.1	318.0	111.16	3.861	
11,100.0	6,870.0	11,445.6	7,200.0	80.2	79.7	140.06	3,917.6	299.6	429.1	315.3	113.80	3.771	
11,200.0	6,870.0	11,545.6	7,200.0	82.1	81.6	140.06	4,017.6	299.4	429.1	312.7	116.45	3.685	
11,300.0	6,870.0	11,645.6	7,200.0	84.0	83.4	140.06	4,117.6	299.1	429.1	310.0	119.10	3.603	
11,400.0	6,870.0	11,745.6	7,200.0	85.9	85.3	140.06	4,217.6	298.9	429.1	307.4	121.75	3.525	
11,500.0	6,870.0	11,845.6	7,200.0	87.8	87.2	140.06	4,317.6	298.7	429.1	304.7	124.41	3.449	
11,600.0	6,870.0	11,945.6	7,200.0	89.7	89.1	140.06	4,417.6	298.4	429.1	302.1	127.07	3.377	
11,700.0	6,870.0	12,045.6	7,200.0	91.5	91.0	140.06	4,517.6	298.2	429.1	299.4	129.73	3.308	
11,800.0	6,870.0	12,145.6	7,200.0	93.4	92.8	140.06	4,617.6	298.0	429.1	296.7	132.39	3.241	
11,900.0	6,870.0	12,245.6	7,200.0	95.3	94.7	140.06	4,717.6	297.8	429.1	294.1	135.05	3.177	
12,000.0	6,870.0	12,345.6	7,200.0	97.2	96.6	140.06	4,817.6	297.5	429.1	291.4	137.72	3.116	
12,100.0	6,870.0	12,445.6	7,200.0	99.1	98.5	140.06	4,917.6	297.3	429.1	288.7	140.38	3.057	
12,200.0	6,870.0	12,545.6	7,200.0	101.0	100.4	140.06	5,017.6	297.1	429.1	286.1	143.05	3.000	
12,300.0	6,870.0	12,645.6	7,200.0	102.9	102.3	140.06	5,117.6	296.8	429.1	283.4	145.72	2.945	
12,400.0	6,870.0	12,745.6	7,200.0	104.8	104.2	140.06	5,217.6	296.6	429.1	280.7	148.40	2.892	
12,500.0	6,870.0	12,845.6	7,200.0	106.7	106.1	140.06	5,317.6	296.4	429.1	278.1	151.07	2.841	
12,600.0	6,870.0	12,945.6	7,200.0	108.6	108.0	140.06	5,417.6	296.2	429.1	275.4	153.74	2.791	
12,700.0	6,870.0	13,045.6	7,200.0	110.5	109.9	140.06	5,517.6	295.9	429.1	272.7	156.42	2.743	
12,800.0	6,870.0	13,145.6	7,200.0	112.4	111.7	140.06	5,617.6	295.7	429.1	270.0	159.09	2.697	
12,900.0	6,870.0	13,245.6	7,200.0	114.3	113.6	140.06	5,717.6	295.5	429.1	267.3	161.77	2.653	
13,000.0	6,870.0	13,345.6	7,200.0	116.2	115.5	140.06	5,817.6	295.2	429.1	264.7	164.45	2.609	
13,100.0	6,870.0	13,445.6	7,200.0	118.1	117.4	140.06	5,917.6	295.0	429.1	262.0	167.13	2.568	
13,200.0	6,870.0	13,545.6	7,200.0	120.0	119.3	140.06	6,017.6	294.8	429.1	259.3	169.81	2.527	
13,300.0	6,870.0	13,645.6	7,200.0	121.9	121.2	140.06	6,117.6	294.6	429.1	256.6	172.49	2.488	
13,400.0	6,870.0	13,745.6	7,200.0	123.8	123.1	140.06	6,217.6	294.3	429.1	253.9	175.17	2.450	
13,500.0	6,870.0	13,845.6	7,200.0	125.7	125.0	140.06	6,317.6	294.1	429.1	251.3	177.86	2.413	
13,600.0	6,870.0	13,945.6	7,200.0	127.6	126.9	140.06	6,417.6	293.9	429.1	248.6	180.54	2.377	
13,700.0	6,870.0	14,045.6	7,200.0	129.5	128.8	140.06	6,517.6	293.6	429.1	245.9	183.23	2.342	
13,800.0	6,870.0	14,145.6	7,200.0	131.4	130.7	140.06	6,617.6	293.4	429.1	243.2	185.91	2.308	

CC - Min centre to center distance or convergent point, SF - min separation factor, ES - min ellipse separation

SRC Evans Center Pad Sec.26-T5N-R66W - SRC Evans P-26-23-14CHZ - Wellbore #1 - Plan #1 (10-2)												Offset Site Error:	0.0 ft
Survey Program: 0-MWD												Offset Well Error:	0.0 ft
Reference		Offset		Semi Major Axis			Distance						Warning
Measured Depth (ft)	Vertical Depth (ft)	Measured Depth (ft)	Vertical Depth (ft)	Reference (ft)	Offset (ft)	Highside Toolface (°)	Offset Wellbore Centre +N/-S (ft)	+E/-W (ft)	Between Centres (ft)	Between Ellipses (ft)	Minimum Separation (ft)	Separation Factor	
13,900.0	6,870.0	14,245.6	7,200.0	133.3	132.6	140.06	6,717.6	293.2	429.1	240.5	188.60	2.275	
14,000.0	6,870.0	14,345.6	7,200.0	135.3	134.5	140.06	6,817.6	293.0	429.1	237.8	191.28	2.243	
14,100.0	6,870.0	14,445.6	7,200.0	137.2	136.5	140.06	6,917.6	292.7	429.1	235.1	193.97	2.212	
14,200.0	6,870.0	14,545.6	7,200.0	139.1	138.4	140.06	7,017.6	292.5	429.1	232.4	196.66	2.182	
14,300.0	6,870.0	14,645.6	7,200.0	141.0	140.3	140.06	7,117.6	292.3	429.1	229.8	199.35	2.153	
14,400.0	6,870.0	14,745.6	7,200.0	142.9	142.2	140.06	7,217.6	292.0	429.1	227.1	202.04	2.124	
14,500.0	6,870.0	14,845.6	7,200.0	144.8	144.1	140.06	7,317.6	291.8	429.1	224.4	204.73	2.096	
14,600.0	6,870.0	14,945.6	7,200.0	146.7	146.0	140.06	7,417.6	291.6	429.1	221.7	207.42	2.069	
14,700.0	6,870.0	15,045.6	7,200.0	148.6	147.9	140.06	7,517.6	291.3	429.1	219.0	210.11	2.042	
14,800.0	6,870.0	15,145.6	7,200.0	150.5	149.8	140.06	7,617.6	291.1	429.1	216.3	212.80	2.016	
14,900.0	6,870.0	15,245.6	7,200.0	152.4	151.7	140.06	7,717.6	290.9	429.1	213.6	215.49	1.991	
15,000.0	6,870.0	15,345.6	7,200.0	154.3	153.6	140.06	7,817.6	290.7	429.1	210.9	218.18	1.967	
15,100.0	6,870.0	15,445.6	7,200.0	156.3	155.5	140.06	7,917.6	290.4	429.1	208.2	220.87	1.943	
15,200.0	6,870.0	15,545.6	7,200.0	158.2	157.4	140.06	8,017.6	290.2	429.1	205.5	223.57	1.919	
15,300.0	6,870.0	15,645.6	7,200.0	160.1	159.3	140.06	8,117.6	290.0	429.1	202.8	226.26	1.896	
15,400.0	6,870.0	15,745.6	7,200.0	162.0	161.2	140.06	8,217.6	289.7	429.1	200.1	228.95	1.874	
15,500.0	6,870.0	15,845.6	7,200.0	163.9	163.1	140.06	8,317.6	289.5	429.1	197.4	231.65	1.852	
15,600.0	6,870.0	15,945.6	7,200.0	165.8	165.1	140.06	8,417.6	289.3	429.1	194.7	234.34	1.831	
15,700.0	6,870.0	16,045.6	7,200.0	167.7	167.0	140.06	8,517.6	289.1	429.1	192.1	237.03	1.810	
15,800.0	6,870.0	16,145.6	7,200.0	169.6	168.9	140.06	8,617.6	288.8	429.1	189.4	239.73	1.790	
15,900.0	6,870.0	16,245.6	7,200.0	171.5	170.8	140.06	8,717.6	288.6	429.1	186.7	242.42	1.770	
16,000.0	6,870.0	16,345.6	7,200.0	173.5	172.7	140.06	8,817.6	288.4	429.1	184.0	245.12	1.751	
16,100.0	6,870.0	16,445.6	7,200.0	175.4	174.6	140.06	8,917.6	288.1	429.1	181.3	247.81	1.731	
16,200.0	6,870.0	16,545.6	7,200.0	177.3	176.5	140.06	9,017.6	287.9	429.1	178.6	250.51	1.713	
16,300.0	6,870.0	16,645.6	7,200.0	179.2	178.4	140.06	9,117.6	287.7	429.1	175.9	253.21	1.695	

Company: Synergy Resources
Project: SEC.26-T5N-R66W
Reference Site: SRC Evans Center Pad Sec.26-T5N-R66W
Site Error: 0.0ft
Reference Well: SRC Evans P-26-23-14NHZ
Well Error: 0.0ft
Reference Wellbore: Wellbore #1
Reference Design: Plan #1 (10-27-14)

Local Co-ordinate Reference: Well SRC Evans P-26-23-14NHZ
TVD Reference: WELL @ 4762.0ft (RKB - 15')
MD Reference: WELL @ 4762.0ft (RKB - 15')
North Reference: True
Survey Calculation Method: Minimum Curvature
Output errors are at 2.00 sigma
Database: Landmark
Offset TVD Reference: Offset Datum

Reference Depths are relative to WELL @ 4762.0ft (RKB - 15')

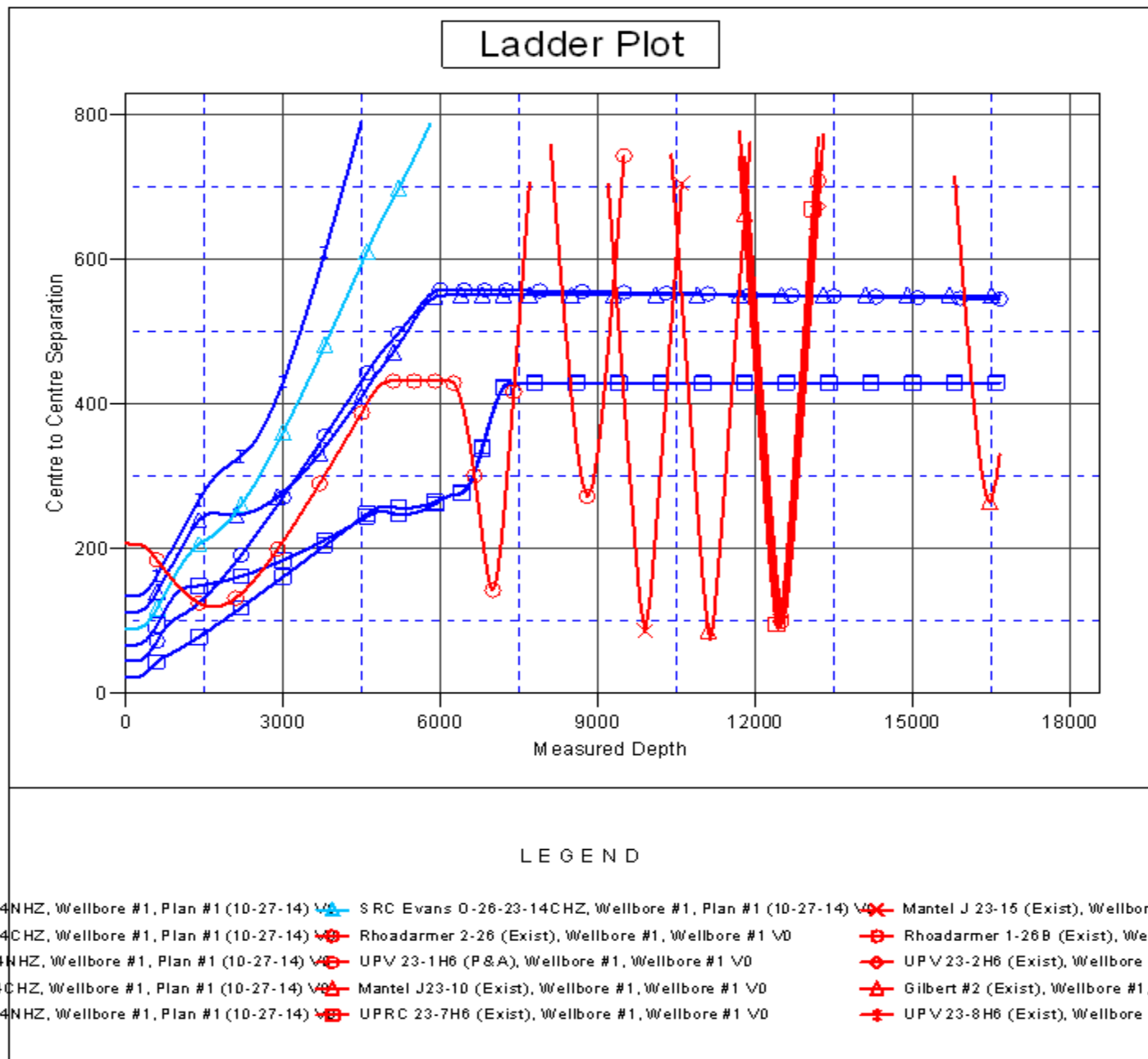
Offset Depths are relative to Offset Datum

Central Meridian is -105.500000 °

Coordinates are relative to: SRC Evans P-26-23-14NHZ

Coordinate System is US State Plane 1983, Colorado Northern Zone

Grid Convergence at Surface is: 0.49°



Company: Synergy Resources
Project: SEC.26-T5N-R66W
Reference Site: SRC Evans Center Pad Sec.26-T5N-R66W
Site Error: 0.0ft
Reference Well: SRC Evans P-26-23-14NHZ
Well Error: 0.0ft
Reference Wellbore: Wellbore #1
Reference Design: Plan #1 (10-27-14)

Local Co-ordinate Reference: Well SRC Evans P-26-23-14NHZ
TVD Reference: WELL @ 4762.0ft (RKB - 15')
MD Reference: WELL @ 4762.0ft (RKB - 15')
North Reference: True
Survey Calculation Method: Minimum Curvature
Output errors are at 2.00 sigma
Database: Landmark
Offset TVD Reference: Offset Datum

Reference Depths are relative to WELL @ 4762.0ft (RKB - 15')

Offset Depths are relative to Offset Datum

Central Meridian is -105.500000 °

Coordinates are relative to: SRC Evans P-26-23-14NHZ

Coordinate System is US State Plane 1983, Colorado Northern Zone

Grid Convergence at Surface is: 0.49°

