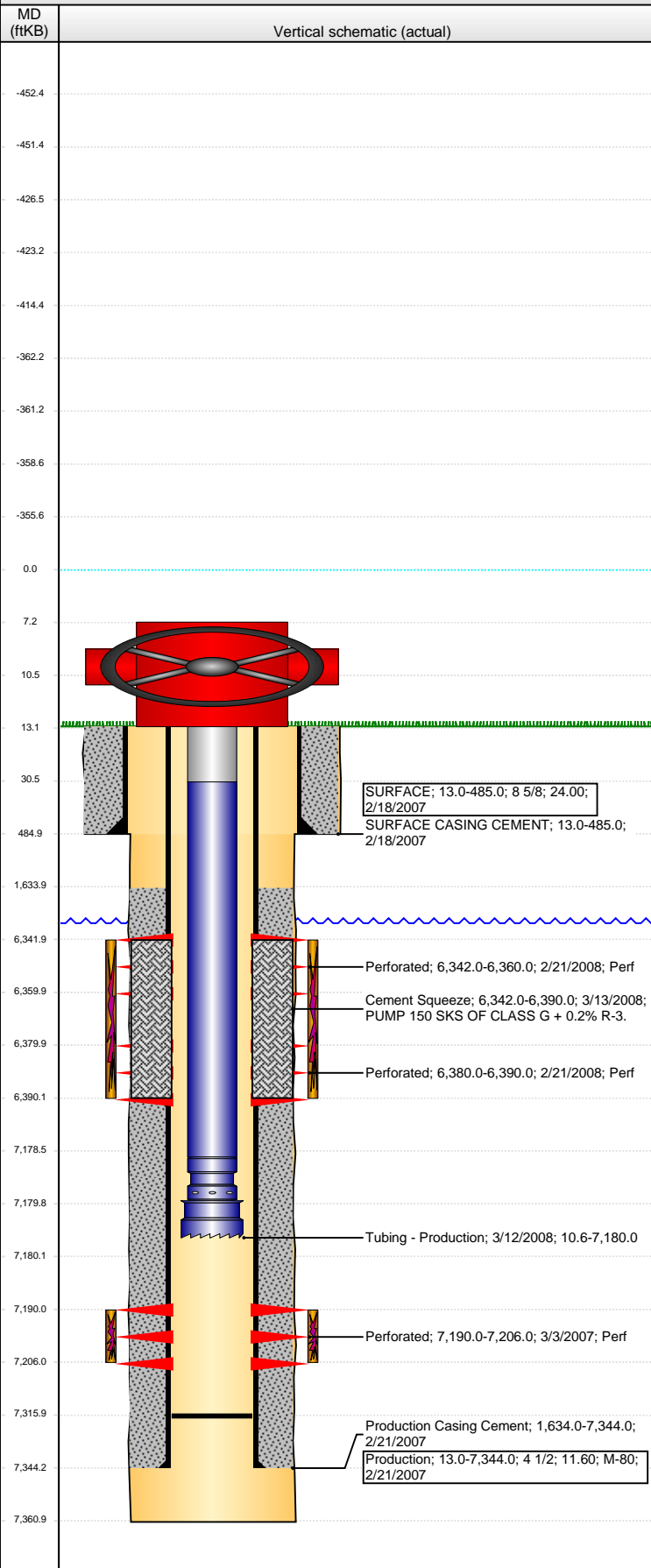


Wellbore Schematic Input Report

Well Name: KAMMERZELL K06-10

VERTICAL - ORIGINAL HOLE, 3/2/2015 9:56:49 AM



Well Header

API	Business Unit	District	Well Config
05-123-24421	DJ BASIN	15	VERTICAL
Original KB Elevation (ft)	KB - GL / MSL (ftKB)	Spud Date	P & A Date
4,722.00	13.00	2/17/2007	
Comment			

Directions To Well

RD 378 & RD 27-1/2. WEST 7/10 TO TANK BATTERY. SOUTH 1/10. WEST 1/10. SOUTH INTO.

Congressional Location

Quarter 1	Quarter 2	Quarter 3	Quarter 4	Section	Township	Twnshp N...	Range	Rng E/W Dir
		NW	SE	6	4	N	66	W

Bottom Hole Location

North-South Distance (ft)	From N or S Line	East-West Distance (ft)	From E or W Line

Plug Back Total Depths

Date	Depth (ftKB)	Method	Com
2/19/2008	7,328.0	CASING TALLY	CLEANED OUT TO
2/20/2008	7,316.0	TAG	
3/5/2008	6,480.0	TAG	
3/18/2008	7,316.0	TUBING TALLY	

Wellbore Sections

Section Des	Size (in)	Act Top, MD (ftKB)	Act Btm, MD (ftKB)
SURFACE	12 1/4	13.0	485.0
PRODUCTION	7 7/8	485.0	7,361.0

Zone Statuses

Zone Name	Status Date	Status	Job
CODELL	3/15/2007	PR	Drilling/Completion - original, 2/17/2007 00:00
CODELL	2/20/2008	SI	RECOMPLETION, 2/19/2008 06:00
CODELL	3/20/2008	PR	RECOMPLETION, 2/19/2008 06:00
TEEPEE BUTTES	3/13/2008	SI	RECOMPLETION, 2/19/2008 06:00

Casing Strings

SURFACE, 485.0ftKB

Casing Description	Run Date	OD (in)	Wt/Len (l...)	Grade	Top, MD (ft...)	MD (ftKB)
SURFACE	2/18/2007	8 5/8	24.00		13.0	485.0

Production, 7,344.0ftKB

Casing Description	Run Date	OD (in)	Wt/Len (l...)	Grade	Top, MD (ft...)	MD (ftKB)
Production	2/21/2007	4 1/2	11.60	M-80	13.0	7,344.0

Cement

Description	Top Depth (ftKB)	Bottom Depth (ftKB)
SURFACE CASING CEMENT	13.0	485.0
Description	Top Depth (ftKB)	Bottom Depth (ftKB)
Production Casing Cement	1,634.0	7,344.0
Description	Top Depth (ftKB)	Bottom Depth (ftKB)
Cement Squeeze	6,342.0	6,390.0

Tubing Strings

Tubing Description	Run Date	String...	ID (in)	Wt (lb/ft)	Grade	Len (ft)	Set De...
Tubing - Production	3/6/2007	2 3/8	1.995	4.70	J-55	7,168.00	
Tubing Description	Run Date	String...	ID (in)	Wt (lb/ft)	Grade	Len (ft)	Set De...
Tubing - Production	3/5/2008	2 3/8	1.995	4.70	J-55	6,316.01	
Tubing Description	Run Date	String...	ID (in)	Wt (lb/ft)	Grade	Len (ft)	Set De...
Tubing - Production	3/12/2008	2 3/8	1.995	4.70	J-55	7,169.37	

Tubing Components

Item Des	OD (in)	Wt (lb/ft)	Grade	Jts	Len (ft)	Btm (ftKB)	Btm (TVD) (ftKB)
Tubing Pup Joint	2 3/8	4.70	J-55	2	20.00	30.6	
Tubing	2 3/8	4.70	J-55	232	7,147.97	7,178.6	
Pump Seating Nipple	2 3/8			1	1.10	7,179.7	
Notched collar	3 1/16			1	0.30	7,180.0	

Perforation Data

Zone	Bnch/St g	Entered Shot Total	Top (ftKB)	Btm (ftKB)	Date
TEEPEE BUTTES, ORIGINAL H...		72	6,342.00	6,360.00	2/21/2008

Well Name: KAMMERZELL K06-10

VERTICAL - ORIGINAL HOLE, 3/2/2015 9:56:51 AM

Perforation Data

Zone	Bnch/St g	Entered Shot Total	Top (ftKB)	Btm (ftKB)	Date
TEEPEE BUTTES, ORIGINAL H...		40	6,380.00	6,390.00	2/21/2008
CODELL, ORIGINAL HOLE		64	7,190.00	7,206.00	3/3/2007

Stimulations & Treatments

Date	Zone	Primary Job Type
3/13/2007	CODELL, ORIGINAL HOLE	Drilling/Completion - original
Technical Result	Tech Result Details	Tech Result Note
Success	According to Plan	

Comment

Date	Zone	Primary Job Type
3/3/2008	TEEPEE BUTTES, ORIGINAL HOLE	RECOMPLETION
Technical Result	Tech Result Details	Tech Result Note
Success	According to Plan	

Comment

THR TREATMENT WENT WELL. INITIAL BREAK AT 2.8 BPM/4088 PSI & BROUGHT UP TO 50.5 BPM/4107 PSI AT THE START OF THE STEP RATE. ISIP = 2677 PSI, 5-MIN = 2544 PSI. 25 PERFS OPEN, NWB FRICTION = 288 PSI, PERF FRICTION = 388 PSI, TOTAL FRICTION = 1427 PSI. PRESSURE RESPONSE WAS NEGATIVE THROUGHOUT THE SAND LADEN STAGES. AVG NOLTE = -0.162 THROUGH THE END OF THE 3.0 PPG SAND AND THEN VERY NEGATIVE IN THE 4.0 PPG SAND STAGE. POST ISIP = 2609 PSI, 5-MIN ISIP = 2552 PSI, TURNED ON AFTER 75 MINUTES ON A 14/64 CHOKE WITH 2100 PSI.

Other In Hole

Run Date	Des	OD (in)	Top (ftKB)	Btm (ftKB)

Logs

Date	Type	Top, MD (ftKB)	Btm, MD (ftKB)
2/20/2007		485.0	7,357.0
2/20/2007		2,400.0	7,337.0
3/3/2007		1,500.0	7,308.0

