

Synergy Resources

Well Name: **SRC Evans G-26-23-14CHZ**

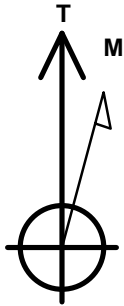
Surface Location: SRC Evans West Pad Sec.26-T5N-R66W
North American Datum 1983 , US State Plane 1983 , Colorado Northern Zone

Ground Elevation: 4741.0

+N/-S	+E/-W	Northing	Easting	Latitude	Longitude	Slot
0.0	0.0	1379446.40	3210130.36	40.372529	-104.745817	
RKB - 13' WELL @ 4754.0ft (RKB - 13')						

WELLBORE TARGET DETAILS

Name	TVD	+N/-S	+E/-W	Shape
SHL 1927'FNL, 3050'FEL, SEC.26	1.0	0.0	0.0	Point
BHL 2183'FSL, 350'FWL, SEC.14	7200.0	9403.7	-2553.6	Point



Azimuths to True North
Magnetic North: 8.40°

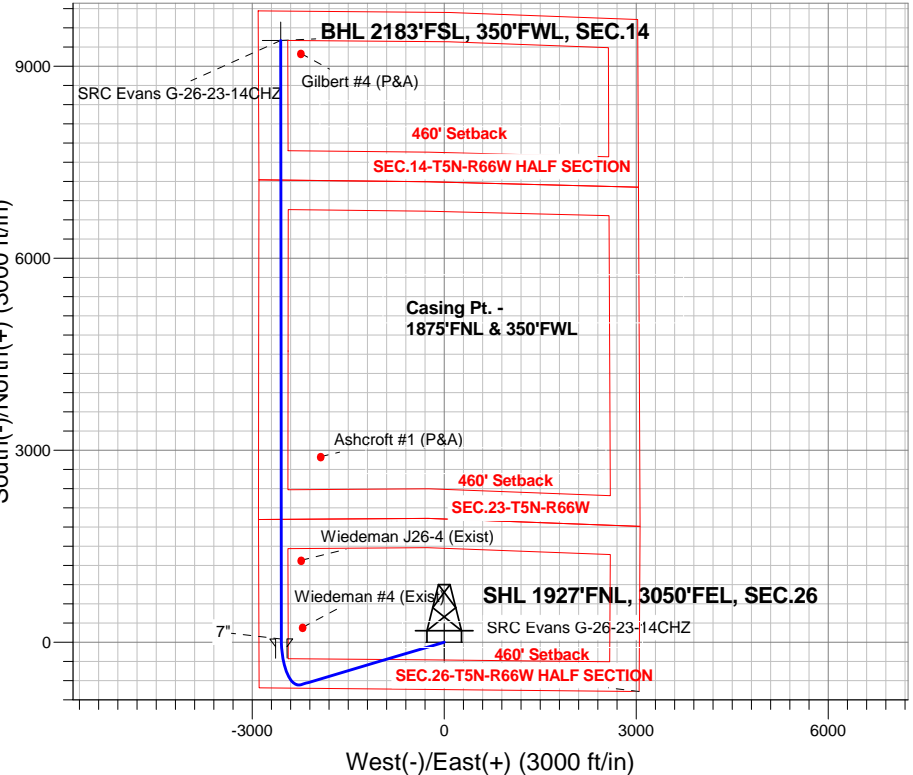
Magnetic Field
Strength: 52764.3snT
Dip Angle: 66.91°
Date: 10/29/2014
Model: IGRF2010

SRC Evans West Pad Sec.26-T5N-R66W
SRC Evans G-26-23-14CHZ
Plan #1 (10-20-14)
7:11, October 29 2014

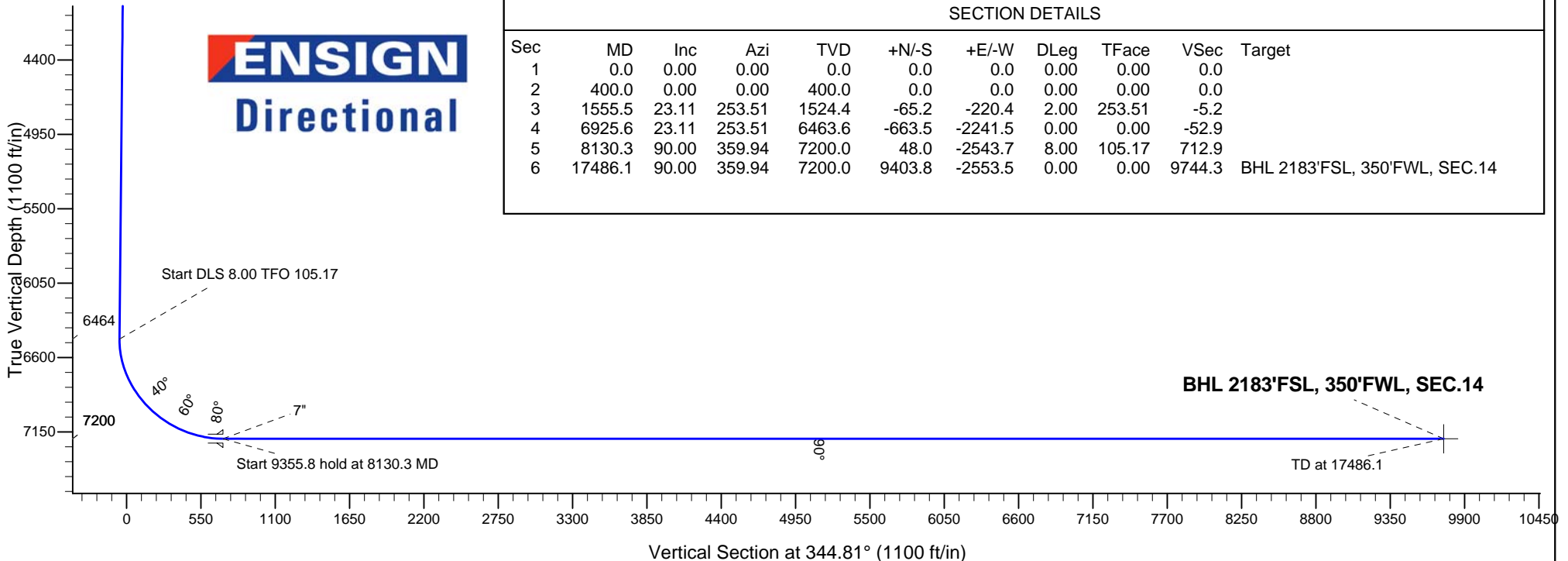
ANNOTATIONS

TVD	MD	Annotation
400.0	400.0	KOP - Start Build 2.00
1524.4	1555.5	Start 5370.1 hold at 1555.5 MD
6463.6	6925.6	Start DLS 8.00 TFO 105.17
7200.0	8130.3	Start 9355.8 hold at 8130.3 MD
7200.0	17486.1	TD at 17486.1

South(-)/North(+) (3000 ft/in)



ENSIGN
Directional



SECTION DETAILS

Sec	MD	Inc	Azi	TVD	+N/-S	+E/-W	DLeg	TFace	VSec	Target
1	0.0	0.00	0.00	0.0	0.0	0.0	0.00	0.00	0.0	
2	400.0	0.00	0.00	400.0	0.0	0.0	0.00	0.00	0.0	
3	1555.5	23.11	253.51	1524.4	-65.2	-220.4	2.00	253.51	-5.2	
4	6925.6	23.11	253.51	6463.6	-663.5	-2241.5	0.00	0.00	-52.9	
5	8130.3	90.00	359.94	7200.0	48.0	-2543.7	8.00	105.17	712.9	
6	17486.1	90.00	359.94	7200.0	9403.8	-2553.5	0.00	0.00	9744.3	BHL 2183'FSL, 350'FWL, SEC.14



Synergy Resources

SEC.26-T5N-R66W

SRC Evans West Pad Sec.26-T5N-R66W

SRC Evans G-26-23-14CHZ

Wellbore #1

Plan: Plan #1 (10-20-14)

Standard Planning Report

29 October, 2014

Plan Sections										
Measured Depth (ft)	Inclination (°)	Azimuth (°)	Vertical Depth (ft)	+N/-S (ft)	+E/-W (ft)	Dogleg Rate (°/100ft)	Build Rate (°/100ft)	Turn Rate (°/100ft)	TFO (°)	Target
0.0	0.00	0.00	0.0	0.0	0.0	0.00	0.00	0.00	0.00	
400.0	0.00	0.00	400.0	0.0	0.0	0.00	0.00	0.00	0.00	
1,555.5	23.11	253.51	1,524.4	-65.2	-220.4	2.00	2.00	0.00	253.51	
6,925.6	23.11	253.51	6,463.6	-663.5	-2,241.5	0.00	0.00	0.00	0.00	
8,130.3	90.00	359.94	7,200.0	48.0	-2,543.7	8.00	5.55	8.83	105.17	
17,486.1	90.00	359.94	7,200.0	9,403.8	-2,553.5	0.00	0.00	0.00	0.00	BHL 2183'FSL, 350

Planned Survey									
Measured Depth (ft)	Inclination (°)	Azimuth (°)	Vertical Depth (ft)	+N-S (ft)	+E-W (ft)	Vertical Section (ft)	Dogleg Rate (°/100ft)	Build Rate (°/100ft)	Turn Rate (°/100ft)
0.0	0.00	0.00	0.0	0.0	0.0	0.0	0.00	0.00	0.00
1.0	0.00	0.00	1.0	0.0	0.0	0.0	0.00	0.00	0.00
SHL 1927'FNL, 3050'FEL, SEC.26									
100.0	0.00	0.00	100.0	0.0	0.0	0.0	0.00	0.00	0.00
200.0	0.00	0.00	200.0	0.0	0.0	0.0	0.00	0.00	0.00
300.0	0.00	0.00	300.0	0.0	0.0	0.0	0.00	0.00	0.00
400.0	0.00	0.00	400.0	0.0	0.0	0.0	0.00	0.00	0.00
KOP - Start Build 2.00									
500.0	2.00	253.51	500.0	-0.5	-1.7	0.0	2.00	2.00	0.00
600.0	4.00	253.51	599.8	-2.0	-6.7	-0.2	2.00	2.00	0.00
700.0	6.00	253.51	699.5	-4.5	-15.0	-0.4	2.00	2.00	0.00
800.0	8.00	253.51	798.7	-7.9	-26.7	-0.6	2.00	2.00	0.00
900.0	10.00	253.51	897.5	-12.4	-41.7	-1.0	2.00	2.00	0.00
1,000.0	12.00	253.51	995.6	-17.8	-60.0	-1.4	2.00	2.00	0.00
1,100.0	14.00	253.51	1,093.1	-24.2	-81.6	-1.9	2.00	2.00	0.00
1,200.0	16.00	253.51	1,189.6	-31.5	-106.4	-2.5	2.00	2.00	0.00
1,300.0	18.00	253.51	1,285.3	-39.8	-134.4	-3.2	2.00	2.00	0.00
1,400.0	20.00	253.51	1,379.8	-49.0	-165.7	-3.9	2.00	2.00	0.00
1,500.0	22.00	253.51	1,473.2	-59.2	-200.0	-4.7	2.00	2.00	0.00
1,555.5	23.11	253.51	1,524.4	-65.2	-220.4	-5.2	2.00	2.00	0.00
Start 5370.1 hold at 1555.5 MD									
1,600.0	23.11	253.51	1,565.4	-70.2	-237.2	-5.6	0.00	0.00	0.00
1,700.0	23.11	253.51	1,657.3	-81.3	-274.8	-6.5	0.00	0.00	0.00
1,800.0	23.11	253.51	1,749.3	-92.5	-312.5	-7.4	0.00	0.00	0.00
1,900.0	23.11	253.51	1,841.3	-103.6	-350.1	-8.3	0.00	0.00	0.00
2,000.0	23.11	253.51	1,933.3	-114.8	-387.7	-9.1	0.00	0.00	0.00
2,100.0	23.11	253.51	2,025.2	-125.9	-425.4	-10.0	0.00	0.00	0.00
2,200.0	23.11	253.51	2,117.2	-137.0	-463.0	-10.9	0.00	0.00	0.00
2,300.0	23.11	253.51	2,209.2	-148.2	-500.6	-11.8	0.00	0.00	0.00
2,400.0	23.11	253.51	2,301.2	-159.3	-538.3	-12.7	0.00	0.00	0.00
2,500.0	23.11	253.51	2,393.1	-170.5	-575.9	-13.6	0.00	0.00	0.00
2,600.0	23.11	253.51	2,485.1	-181.6	-613.5	-14.5	0.00	0.00	0.00
2,700.0	23.11	253.51	2,577.1	-192.7	-651.2	-15.4	0.00	0.00	0.00
2,800.0	23.11	253.51	2,669.1	-203.9	-688.8	-16.2	0.00	0.00	0.00
2,900.0	23.11	253.51	2,761.0	-215.0	-726.5	-17.1	0.00	0.00	0.00
3,000.0	23.11	253.51	2,853.0	-226.2	-764.1	-18.0	0.00	0.00	0.00
3,100.0	23.11	253.51	2,945.0	-237.3	-801.7	-18.9	0.00	0.00	0.00
3,200.0	23.11	253.51	3,037.0	-248.4	-839.4	-19.8	0.00	0.00	0.00
3,300.0	23.11	253.51	3,128.9	-259.6	-877.0	-20.7	0.00	0.00	0.00
3,400.0	23.11	253.51	3,220.9	-270.7	-914.6	-21.6	0.00	0.00	0.00
3,500.0	23.11	253.51	3,312.9	-281.9	-952.3	-22.5	0.00	0.00	0.00
3,600.0	23.11	253.51	3,404.9	-293.0	-989.9	-23.4	0.00	0.00	0.00
3,700.0	23.11	253.51	3,496.8	-304.1	-1,027.5	-24.2	0.00	0.00	0.00
3,800.0	23.11	253.51	3,588.8	-315.3	-1,065.2	-25.1	0.00	0.00	0.00
3,900.0	23.11	253.51	3,680.8	-326.4	-1,102.8	-26.0	0.00	0.00	0.00
4,000.0	23.11	253.51	3,772.8	-337.6	-1,140.4	-26.9	0.00	0.00	0.00
4,100.0	23.11	253.51	3,864.7	-348.7	-1,178.1	-27.8	0.00	0.00	0.00
4,200.0	23.11	253.51	3,956.7	-359.8	-1,215.7	-28.7	0.00	0.00	0.00
4,300.0	23.11	253.51	4,048.7	-371.0	-1,253.4	-29.6	0.00	0.00	0.00
4,400.0	23.11	253.51	4,140.7	-382.1	-1,291.0	-30.5	0.00	0.00	0.00
4,500.0	23.11	253.51	4,232.6	-393.3	-1,328.6	-31.3	0.00	0.00	0.00
4,600.0	23.11	253.51	4,324.6	-404.4	-1,366.3	-32.2	0.00	0.00	0.00
4,700.0	23.11	253.51	4,416.6	-415.5	-1,403.9	-33.1	0.00	0.00	0.00

Database:	Landmark	Local Co-ordinate Reference:	Well SRC Evans G-26-23-14CHZ
Company:	Synergy Resources	TVD Reference:	WELL @ 4754.0ft (RKB - 13')
Project:	SEC.26-T5N-R66W	MD Reference:	WELL @ 4754.0ft (RKB - 13')
Site:	SRC Evans West Pad Sec.26-T5N-R66W	North Reference:	True
Well:	SRC Evans G-26-23-14CHZ	Survey Calculation Method:	Minimum Curvature
Wellbore:	Wellbore #1		
Design:	Plan #1 (10-20-14)		

Planned Survey										
Measured Depth (ft)	Inclination (°)	Azimuth (°)	Vertical Depth (ft)	+N/-S (ft)	+E/-W (ft)	Vertical Section (ft)	Dogleg Rate (°/100ft)	Build Rate (°/100ft)	Turn Rate (°/100ft)	
4,800.0	23.11	253.51	4,508.6	-426.7	-1,441.5	-34.0	0.00	0.00	0.00	
4,900.0	23.11	253.51	4,600.5	-437.8	-1,479.2	-34.9	0.00	0.00	0.00	
5,000.0	23.11	253.51	4,692.5	-448.9	-1,516.8	-35.8	0.00	0.00	0.00	
5,100.0	23.11	253.51	4,784.5	-460.1	-1,554.4	-36.7	0.00	0.00	0.00	
5,200.0	23.11	253.51	4,876.5	-471.2	-1,592.1	-37.6	0.00	0.00	0.00	
5,300.0	23.11	253.51	4,968.4	-482.4	-1,629.7	-38.4	0.00	0.00	0.00	
5,400.0	23.11	253.51	5,060.4	-493.5	-1,667.4	-39.3	0.00	0.00	0.00	
5,500.0	23.11	253.51	5,152.4	-504.6	-1,705.0	-40.2	0.00	0.00	0.00	
5,600.0	23.11	253.51	5,244.4	-515.8	-1,742.6	-41.1	0.00	0.00	0.00	
5,700.0	23.11	253.51	5,336.3	-526.9	-1,780.3	-42.0	0.00	0.00	0.00	
5,800.0	23.11	253.51	5,428.3	-538.1	-1,817.9	-42.9	0.00	0.00	0.00	
5,900.0	23.11	253.51	5,520.3	-549.2	-1,855.5	-43.8	0.00	0.00	0.00	
6,000.0	23.11	253.51	5,612.3	-560.3	-1,893.2	-44.7	0.00	0.00	0.00	
6,100.0	23.11	253.51	5,704.2	-571.5	-1,930.8	-45.5	0.00	0.00	0.00	
6,200.0	23.11	253.51	5,796.2	-582.6	-1,968.4	-46.4	0.00	0.00	0.00	
6,300.0	23.11	253.51	5,888.2	-593.8	-2,006.1	-47.3	0.00	0.00	0.00	
6,400.0	23.11	253.51	5,980.2	-604.9	-2,043.7	-48.2	0.00	0.00	0.00	
6,500.0	23.11	253.51	6,072.1	-616.0	-2,081.3	-49.1	0.00	0.00	0.00	
6,600.0	23.11	253.51	6,164.1	-627.2	-2,119.0	-50.0	0.00	0.00	0.00	
6,700.0	23.11	253.51	6,256.1	-638.3	-2,156.6	-50.9	0.00	0.00	0.00	
6,800.0	23.11	253.51	6,348.1	-649.5	-2,194.3	-51.8	0.00	0.00	0.00	
6,900.0	23.11	253.51	6,440.0	-660.6	-2,231.9	-52.6	0.00	0.00	0.00	
6,925.6	23.11	253.51	6,463.6	-663.5	-2,241.5	-52.9	0.00	0.00	0.00	
Start DLS 8.00 TFO 105.17										
7,000.0	22.26	268.82	6,532.3	-667.9	-2,269.6	-49.8	8.00	-1.14	20.59	
7,100.0	23.45	289.29	6,624.6	-661.7	-2,307.4	-33.9	8.00	1.19	20.46	
7,200.0	26.94	306.29	6,715.2	-641.7	-2,344.5	-4.9	8.00	3.49	17.00	
7,300.0	31.98	318.98	6,802.3	-608.2	-2,380.2	36.8	8.00	5.04	12.69	
7,400.0	37.96	328.29	6,884.3	-562.0	-2,413.8	90.2	8.00	5.98	9.31	
7,500.0	44.49	335.32	6,959.5	-503.9	-2,444.7	154.3	8.00	6.53	7.02	
7,600.0	51.37	340.85	7,026.5	-435.1	-2,472.2	228.0	8.00	6.87	5.53	
7,700.0	58.46	345.39	7,083.9	-356.8	-2,495.8	309.7	8.00	7.09	4.54	
7,800.0	65.68	349.28	7,130.8	-270.7	-2,515.0	397.9	8.00	7.23	3.89	
7,900.0	72.99	352.75	7,166.0	-178.3	-2,529.6	490.8	8.00	7.31	3.47	
8,000.0	80.36	355.95	7,189.1	-81.6	-2,539.1	586.7	8.00	7.37	3.21	
8,100.0	87.76	359.02	7,199.4	17.7	-2,543.4	683.6	8.00	7.40	3.07	
8,130.3	90.00	359.94	7,200.0	48.0	-2,543.7	712.9	8.00	7.40	3.03	
Start 9355.8 hold at 8130.3 MD - 7"										
8,200.0	90.00	359.94	7,200.0	117.7	-2,543.8	780.2	0.00	0.00	0.00	
8,300.0	90.00	359.94	7,200.0	217.7	-2,543.9	876.7	0.00	0.00	0.00	
8,400.0	90.00	359.94	7,200.0	317.7	-2,544.0	973.3	0.00	0.00	0.00	
8,500.0	90.00	359.94	7,200.0	417.7	-2,544.1	1,069.8	0.00	0.00	0.00	
8,600.0	90.00	359.94	7,200.0	517.7	-2,544.2	1,166.3	0.00	0.00	0.00	
8,700.0	90.00	359.94	7,200.0	617.7	-2,544.3	1,262.9	0.00	0.00	0.00	
8,800.0	90.00	359.94	7,200.0	717.7	-2,544.4	1,359.4	0.00	0.00	0.00	
8,900.0	90.00	359.94	7,200.0	817.7	-2,544.5	1,455.9	0.00	0.00	0.00	
9,000.0	90.00	359.94	7,200.0	917.7	-2,544.6	1,552.5	0.00	0.00	0.00	
9,100.0	90.00	359.94	7,200.0	1,017.7	-2,544.7	1,649.0	0.00	0.00	0.00	
9,200.0	90.00	359.94	7,200.0	1,117.7	-2,544.8	1,745.5	0.00	0.00	0.00	
9,300.0	90.00	359.94	7,200.0	1,217.7	-2,544.9	1,842.1	0.00	0.00	0.00	
9,400.0	90.00	359.94	7,200.0	1,317.7	-2,545.0	1,938.6	0.00	0.00	0.00	
9,500.0	90.00	359.94	7,200.0	1,417.7	-2,545.1	2,035.1	0.00	0.00	0.00	
9,600.0	90.00	359.94	7,200.0	1,517.7	-2,545.2	2,131.7	0.00	0.00	0.00	
9,700.0	90.00	359.94	7,200.0	1,617.7	-2,545.3	2,228.2	0.00	0.00	0.00	

Database:	Landmark	Local Co-ordinate Reference:	Well SRC Evans G-26-23-14CHZ
Company:	Synergy Resources	TVD Reference:	WELL @ 4754.0ft (RKB - 13')
Project:	SEC.26-T5N-R66W	MD Reference:	WELL @ 4754.0ft (RKB - 13')
Site:	SRC Evans West Pad Sec.26-T5N-R66W	North Reference:	True
Well:	SRC Evans G-26-23-14CHZ	Survey Calculation Method:	Minimum Curvature
Wellbore:	Wellbore #1		
Design:	Plan #1 (10-20-14)		

Planned Survey									
Measured Depth (ft)	Inclination (°)	Azimuth (°)	Vertical Depth (ft)	+N/-S (ft)	+E/-W (ft)	Vertical Section (ft)	Dogleg Rate (°/100ft)	Build Rate (°/100ft)	Turn Rate (°/100ft)
9,800.0	90.00	359.94	7,200.0	1,717.7	-2,545.4	2,324.7	0.00	0.00	0.00
9,900.0	90.00	359.94	7,200.0	1,817.7	-2,545.6	2,421.3	0.00	0.00	0.00
10,000.0	90.00	359.94	7,200.0	1,917.7	-2,545.7	2,517.8	0.00	0.00	0.00
10,100.0	90.00	359.94	7,200.0	2,017.7	-2,545.8	2,614.3	0.00	0.00	0.00
10,200.0	90.00	359.94	7,200.0	2,117.7	-2,545.9	2,710.9	0.00	0.00	0.00
10,300.0	90.00	359.94	7,200.0	2,217.7	-2,546.0	2,807.4	0.00	0.00	0.00
10,400.0	90.00	359.94	7,200.0	2,317.7	-2,546.1	2,903.9	0.00	0.00	0.00
10,500.0	90.00	359.94	7,200.0	2,417.7	-2,546.2	3,000.5	0.00	0.00	0.00
10,600.0	90.00	359.94	7,200.0	2,517.7	-2,546.3	3,097.0	0.00	0.00	0.00
10,700.0	90.00	359.94	7,200.0	2,617.7	-2,546.4	3,193.5	0.00	0.00	0.00
10,800.0	90.00	359.94	7,200.0	2,717.7	-2,546.5	3,290.1	0.00	0.00	0.00
10,900.0	90.00	359.94	7,200.0	2,817.7	-2,546.6	3,386.6	0.00	0.00	0.00
11,000.0	90.00	359.94	7,200.0	2,917.7	-2,546.7	3,483.1	0.00	0.00	0.00
11,100.0	90.00	359.94	7,200.0	3,017.7	-2,546.8	3,579.6	0.00	0.00	0.00
11,200.0	90.00	359.94	7,200.0	3,117.7	-2,546.9	3,676.2	0.00	0.00	0.00
11,300.0	90.00	359.94	7,200.0	3,217.7	-2,547.0	3,772.7	0.00	0.00	0.00
11,400.0	90.00	359.94	7,200.0	3,317.7	-2,547.1	3,869.2	0.00	0.00	0.00
11,500.0	90.00	359.94	7,200.0	3,417.7	-2,547.2	3,965.8	0.00	0.00	0.00
11,600.0	90.00	359.94	7,200.0	3,517.7	-2,547.3	4,062.3	0.00	0.00	0.00
11,700.0	90.00	359.94	7,200.0	3,617.7	-2,547.4	4,158.8	0.00	0.00	0.00
11,800.0	90.00	359.94	7,200.0	3,717.7	-2,547.5	4,255.4	0.00	0.00	0.00
11,900.0	90.00	359.94	7,200.0	3,817.7	-2,547.6	4,351.9	0.00	0.00	0.00
12,000.0	90.00	359.94	7,200.0	3,917.7	-2,547.8	4,448.4	0.00	0.00	0.00
12,100.0	90.00	359.94	7,200.0	4,017.7	-2,547.9	4,545.0	0.00	0.00	0.00
12,200.0	90.00	359.94	7,200.0	4,117.7	-2,548.0	4,641.5	0.00	0.00	0.00
12,300.0	90.00	359.94	7,200.0	4,217.7	-2,548.1	4,738.0	0.00	0.00	0.00
12,400.0	90.00	359.94	7,200.0	4,317.7	-2,548.2	4,834.6	0.00	0.00	0.00
12,500.0	90.00	359.94	7,200.0	4,417.7	-2,548.3	4,931.1	0.00	0.00	0.00
12,600.0	90.00	359.94	7,200.0	4,517.7	-2,548.4	5,027.6	0.00	0.00	0.00
12,700.0	90.00	359.94	7,200.0	4,617.7	-2,548.5	5,124.2	0.00	0.00	0.00
12,800.0	90.00	359.94	7,200.0	4,717.7	-2,548.6	5,220.7	0.00	0.00	0.00
12,900.0	90.00	359.94	7,200.0	4,817.7	-2,548.7	5,317.2	0.00	0.00	0.00
13,000.0	90.00	359.94	7,200.0	4,917.7	-2,548.8	5,413.8	0.00	0.00	0.00
13,100.0	90.00	359.94	7,200.0	5,017.7	-2,548.9	5,510.3	0.00	0.00	0.00
13,200.0	90.00	359.94	7,200.0	5,117.7	-2,549.0	5,606.8	0.00	0.00	0.00
13,300.0	90.00	359.94	7,200.0	5,217.7	-2,549.1	5,703.4	0.00	0.00	0.00
13,400.0	90.00	359.94	7,200.0	5,317.7	-2,549.2	5,799.9	0.00	0.00	0.00
13,500.0	90.00	359.94	7,200.0	5,417.7	-2,549.3	5,896.4	0.00	0.00	0.00
13,600.0	90.00	359.94	7,200.0	5,517.7	-2,549.4	5,993.0	0.00	0.00	0.00
13,700.0	90.00	359.94	7,200.0	5,617.7	-2,549.5	6,089.5	0.00	0.00	0.00
13,800.0	90.00	359.94	7,200.0	5,717.7	-2,549.6	6,186.0	0.00	0.00	0.00
13,900.0	90.00	359.94	7,200.0	5,817.7	-2,549.7	6,282.6	0.00	0.00	0.00
14,000.0	90.00	359.94	7,200.0	5,917.7	-2,549.8	6,379.1	0.00	0.00	0.00
14,100.0	90.00	359.94	7,200.0	6,017.7	-2,550.0	6,475.6	0.00	0.00	0.00
14,200.0	90.00	359.94	7,200.0	6,117.7	-2,550.1	6,572.2	0.00	0.00	0.00
14,300.0	90.00	359.94	7,200.0	6,217.7	-2,550.2	6,668.7	0.00	0.00	0.00
14,400.0	90.00	359.94	7,200.0	6,317.7	-2,550.3	6,765.2	0.00	0.00	0.00
14,500.0	90.00	359.94	7,200.0	6,417.7	-2,550.4	6,861.8	0.00	0.00	0.00
14,600.0	90.00	359.94	7,200.0	6,517.7	-2,550.5	6,958.3	0.00	0.00	0.00
14,700.0	90.00	359.94	7,200.0	6,617.7	-2,550.6	7,054.8	0.00	0.00	0.00
14,800.0	90.00	359.94	7,200.0	6,717.7	-2,550.7	7,151.4	0.00	0.00	0.00
14,900.0	90.00	359.94	7,200.0	6,817.7	-2,550.8	7,247.9	0.00	0.00	0.00
15,000.0	90.00	359.94	7,200.0	6,917.7	-2,550.9	7,344.4	0.00	0.00	0.00
15,100.0	90.00	359.94	7,200.0	7,017.7	-2,551.0	7,441.0	0.00	0.00	0.00

Database:	Landmark	Local Co-ordinate Reference:	Well SRC Evans G-26-23-14CHZ
Company:	Synergy Resources	TVD Reference:	WELL @ 4754.0ft (RKB - 13')
Project:	SEC.26-T5N-R66W	MD Reference:	WELL @ 4754.0ft (RKB - 13')
Site:	SRC Evans West Pad Sec.26-T5N-R66W	North Reference:	True
Well:	SRC Evans G-26-23-14CHZ	Survey Calculation Method:	Minimum Curvature
Wellbore:	Wellbore #1		
Design:	Plan #1 (10-20-14)		

Planned Survey										
Measured Depth (ft)	Inclination (°)	Azimuth (°)	Vertical Depth (ft)	+N/-S (ft)	+E/-W (ft)	Vertical Section (ft)	Dogleg Rate (°/100ft)	Build Rate (°/100ft)	Turn Rate (°/100ft)	
15,200.0	90.00	359.94	7,200.0	7,117.7	-2,551.1	7,537.5	0.00	0.00	0.00	
15,300.0	90.00	359.94	7,200.0	7,217.7	-2,551.2	7,634.0	0.00	0.00	0.00	
15,400.0	90.00	359.94	7,200.0	7,317.7	-2,551.3	7,730.6	0.00	0.00	0.00	
15,500.0	90.00	359.94	7,200.0	7,417.7	-2,551.4	7,827.1	0.00	0.00	0.00	
15,600.0	90.00	359.94	7,200.0	7,517.7	-2,551.5	7,923.6	0.00	0.00	0.00	
15,700.0	90.00	359.94	7,200.0	7,617.7	-2,551.6	8,020.2	0.00	0.00	0.00	
15,800.0	90.00	359.94	7,200.0	7,717.7	-2,551.7	8,116.7	0.00	0.00	0.00	
15,900.0	90.00	359.94	7,200.0	7,817.7	-2,551.8	8,213.2	0.00	0.00	0.00	
16,000.0	90.00	359.94	7,200.0	7,917.7	-2,551.9	8,309.8	0.00	0.00	0.00	
16,100.0	90.00	359.94	7,200.0	8,017.7	-2,552.0	8,406.3	0.00	0.00	0.00	
16,200.0	90.00	359.94	7,200.0	8,117.7	-2,552.2	8,502.8	0.00	0.00	0.00	
16,300.0	90.00	359.94	7,200.0	8,217.7	-2,552.3	8,599.4	0.00	0.00	0.00	
16,400.0	90.00	359.94	7,200.0	8,317.7	-2,552.4	8,695.9	0.00	0.00	0.00	
16,500.0	90.00	359.94	7,200.0	8,417.7	-2,552.5	8,792.4	0.00	0.00	0.00	
16,600.0	90.00	359.94	7,200.0	8,517.7	-2,552.6	8,889.0	0.00	0.00	0.00	
16,700.0	90.00	359.94	7,200.0	8,617.7	-2,552.7	8,985.5	0.00	0.00	0.00	
16,800.0	90.00	359.94	7,200.0	8,717.7	-2,552.8	9,082.0	0.00	0.00	0.00	
16,900.0	90.00	359.94	7,200.0	8,817.7	-2,552.9	9,178.6	0.00	0.00	0.00	
17,000.0	90.00	359.94	7,200.0	8,917.7	-2,553.0	9,275.1	0.00	0.00	0.00	
17,100.0	90.00	359.94	7,200.0	9,017.7	-2,553.1	9,371.6	0.00	0.00	0.00	
17,200.0	90.00	359.94	7,200.0	9,117.7	-2,553.2	9,468.2	0.00	0.00	0.00	
17,300.0	90.00	359.94	7,200.0	9,217.7	-2,553.3	9,564.7	0.00	0.00	0.00	
17,400.0	90.00	359.94	7,200.0	9,317.7	-2,553.4	9,661.2	0.00	0.00	0.00	
17,486.0	90.00	359.94	7,200.0	9,403.7	-2,553.5	9,744.3	0.00	0.00	0.00	
TD at 17486.1 - BHL 2183'FSL, 350'FWL, SEC.14										

Targets										
Target Name	Dip Angle (°)	Dip Dir. (°)	TVD (ft)	+N/-S (ft)	+E/-W (ft)	Northing (ft)	Easting (ft)	Latitude	Longitude	
BHL 2183'FSL, 350'F	0.00	0.00	7,200.0	9,403.7	-2,553.6	1,388,827.69	3,207,497.03	40.398341	-104.754985	
- hit/miss target										
- plan misses target center by 0.1ft at 17486.0ft MD (7200.0 TVD, 9403.7 N, -2553.5 E)										
- Shape										
- Point										
SHL 1927'FNL, 3050'I	0.00	0.00	1.0	0.0	0.0	1,379,446.41	3,210,130.36	40.372529	-104.745817	
- plan hits target center										
- Point										

Casing Points					
Measured Depth (ft)	Vertical Depth (ft)	Name	Casing Diameter (")	Hole Diameter (")	
8,130.3	7,200.0	7"	7	7-1/2	

Database:	Landmark	Local Co-ordinate Reference:	Well SRC Evans G-26-23-14CHZ
Company:	Synergy Resources	TVD Reference:	WELL @ 4754.0ft (RKB - 13')
Project:	SEC.26-T5N-R66W	MD Reference:	WELL @ 4754.0ft (RKB - 13')
Site:	SRC Evans West Pad Sec.26-T5N-R66W	North Reference:	True
Well:	SRC Evans G-26-23-14CHZ	Survey Calculation Method:	Minimum Curvature
Wellbore:	Wellbore #1		
Design:	Plan #1 (10-20-14)		

Plan Annotations				
Measured Depth (ft)	Vertical Depth (ft)	Local Coordinates		Comment
		+N/-S (ft)	+E/-W (ft)	
400.0	400.0	0.0	0.0	KOP - Start Build 2.00
1,555.5	1,524.4	-65.2	-220.4	Start 5370.1 hold at 1555.5 MD
6,925.6	6,463.6	-663.5	-2,241.5	Start DLS 8.00 TFO 105.17
8,130.3	7,200.0	48.0	-2,543.7	Start 9355.8 hold at 8130.3 MD
17,486.1	7,200.0	9,403.8	-2,553.5	TD at 17486.1



Synergy Resources

SEC.26-T5N-R66W

SRC Evans West Pad Sec.26-T5N-R66W

SRC Evans G-26-23-14CHZ

Wellbore #1

Plan #1 (10-20-14)

Anticollision Report

29 October, 2014

Company:	Synergy Resources	Local Co-ordinate Reference:	Well SRC Evans G-26-23-14CHZ
Project:	SEC.26-T5N-R66W	TVD Reference:	WELL @ 4754.0ft (RKB - 13')
Reference Site:	SRC Evans West Pad Sec.26-T5N-R66W	MD Reference:	WELL @ 4754.0ft (RKB - 13')
Site Error:	0.0ft	North Reference:	True
Reference Well:	SRC Evans G-26-23-14CHZ	Survey Calculation Method:	Minimum Curvature
Well Error:	0.0ft	Output errors are at	2.00 sigma
Reference Wellbore	Wellbore #1	Database:	Landmark
Reference Design:	Plan #1 (10-20-14)	Offset TVD Reference:	Offset Datum

Reference	Plan #1 (10-20-14)		
Filter type:	NO GLOBAL FILTER: Using user defined selection & filtering criteria		
Interpolation Method:	Stations	Error Model:	ISCWSA
Depth Range:	Unlimited	Scan Method:	Closest Approach 3D
Results Limited by:	Maximum center-center distance of 800.0ft	Error Surface:	Elliptical Conic
Warning Levels Evaluated at:	2.00 Sigma		

Survey Tool Program	Date 10/29/2014			
From (ft)	To (ft)	Survey (Wellbore)	Tool Name	Description
0.0	17,486.0	Plan #1 (10-20-14) (Wellbore #1)	MWD	MWD - Standard

Summary						
Site Name	Reference Measured Depth (ft)	Offset Measured Depth (ft)	Distance Between Centres (ft)	Distance Between Ellipses (ft)	Separation Factor	Warning
Existing Wells Sec.26-T5N-R66W						
Ashcroft #1 (P&A) - Wellbore #1 - Wellbore #1	10,980.2	7,448.0	617.6	405.6	2.913	CC
Ashcroft #1 (P&A) - Wellbore #1 - Wellbore #1	11,000.0	7,448.0	618.0	405.6	2.910	ES, SF
Gilbert #4 (P&A) - Wellbore #1 - Wellbore #1	17,282.7	7,326.0	315.6	-11.7	0.964	Level 1, CC, ES, SF
Wiedeman #4 (Exist) - Wellbore #1 - Wellbore #1	8,315.6	7,178.0	333.5	164.2	1.970	CC, ES, SF
Wiedeman J26-4 (Exist) - Wellbore #1 - Wellbore #1	9,361.2	7,208.0	309.6	128.9	1.713	CC, ES, SF
SRC Evans Center Pad Sec.26-T5N-R66W						
SRC Evans 23-26-23-14CHZ - Wellbore #1 - Plan #1 (10	402.2	410.6	468.6	467.0	293.058	CC, ES
SRC Evans 23-26-23-14CHZ - Wellbore #1 - Plan #1 (10	2,000.0	1,970.8	797.6	786.5	71.624	SF
SRC Evans O-26-23-14CHZ - Wellbore #1 - Plan #1 (10-	400.0	409.0	460.5	459.0	288.999	CC, ES
SRC Evans O-26-23-14CHZ - Wellbore #1 - Plan #1 (10-	2,300.0	2,372.3	794.7	782.2	63.535	SF
SRC Evans O-26-23-14NHZ - Wellbore #1 - Plan #1 (10-	400.0	410.0	460.3	458.7	288.462	CC, ES
SRC Evans O-26-23-14NHZ - Wellbore #1 - Plan #1 (10-	2,000.0	2,131.6	795.5	786.0	83.623	SF
SRC Evans West Pad Sec.26-T5N-R66W						
SRC Evans 13-26-23-14CHZ - Wellbore #1 - Plan #1 (10	670.0	668.6	43.0	40.2	15.577	CC
SRC Evans 13-26-23-14CHZ - Wellbore #1 - Plan #1 (10	700.0	698.5	43.1	40.2	14.872	ES
SRC Evans 13-26-23-14CHZ - Wellbore #1 - Plan #1 (10	17,486.1	17,317.3	550.9	181.2	1.490	Level 3, SF
SRC Evans 13-26-23-14NHZ - Wellbore #1 - Plan #1 (10	591.6	591.5	21.7	19.3	9.009	CC
SRC Evans 13-26-23-14NHZ - Wellbore #1 - Plan #1 (10	600.0	599.8	21.7	19.2	8.879	ES
SRC Evans 13-26-23-14NHZ - Wellbore #1 - Plan #1 (10	17,486.1	17,093.2	429.8	172.9	1.673	SF
SRC Evans B-26-23-14CHZ - Wellbore #1 - Plan #1 (10-	782.8	780.7	86.3	83.0	26.115	CC
SRC Evans B-26-23-14CHZ - Wellbore #1 - Plan #1 (10-	800.0	797.7	86.3	82.9	25.470	ES
SRC Evans B-26-23-14CHZ - Wellbore #1 - Plan #1 (10-	5,700.0	5,679.3	793.9	755.0	20.409	SF
SRC Evans B-26-23-14NHZ - Wellbore #1 - Plan #1 (10-	731.2	729.5	64.6	61.6	21.190	CC, ES
SRC Evans B-26-23-14NHZ - Wellbore #1 - Plan #1 (10-	6,400.0	6,411.9	585.5	536.6	11.986	SF
SRC Evans G-26-23-14NHZ - Wellbore #1 - Plan #1 (10-	384.4	385.6	21.8	20.3	14.619	CC
SRC Evans G-26-23-14NHZ - Wellbore #1 - Plan #1 (10-	400.0	401.1	21.8	20.2	13.984	ES
SRC Evans G-26-23-14NHZ - Wellbore #1 - Plan #1 (10-	17,486.1	17,278.2	431.8	153.7	1.553	SF
SRC Evans K-26-23-14CHZ - Wellbore #1 - Plan #1 (10-	867.1	863.0	129.3	125.6	34.528	CC
SRC Evans K-26-23-14CHZ - Wellbore #1 - Plan #1 (10-	900.0	895.5	129.4	125.5	33.002	ES
SRC Evans K-26-23-14CHZ - Wellbore #1 - Plan #1 (10-	1,200.0	1,187.6	148.5	142.8	25.966	SF
SRC Evans K-26-23-14NHZ - Wellbore #1 - Plan #1 (10-	826.4	822.8	108.0	104.5	30.620	CC, ES
SRC Evans K-26-23-14NHZ - Wellbore #1 - Plan #1 (10-	1,200.0	1,187.6	134.0	128.4	23.736	SF

Company:	Synergy Resources	Local Co-ordinate Reference:	Well SRC Evans G-26-23-14CHZ
Project:	SEC.26-T5N-R66W	TVD Reference:	WELL @ 4754.0ft (RKB - 13')
Reference Site:	SRC Evans West Pad Sec.26-T5N-R66W	MD Reference:	WELL @ 4754.0ft (RKB - 13')
Site Error:	0.0ft	North Reference:	True
Reference Well:	SRC Evans G-26-23-14CHZ	Survey Calculation Method:	Minimum Curvature
Well Error:	0.0ft	Output errors are at	2.00 sigma
Reference Wellbore	Wellbore #1	Database:	Landmark
Reference Design:	Plan #1 (10-20-14)	Offset TVD Reference:	Offset Datum

Summary						
Site Name	Reference Measured Depth (ft)	Offset Measured Depth (ft)	Distance Between Centres (ft)	Distance Between Ellipses (ft)	Separation Factor	Warning
Offset Well - Wellbore - Design						
SRC Gilbert 42-14-11NHZ Pad Sec.14-T5N-R66W						
SRC Gilbert 12-14-11CHZ - Wellbore #1 - Plan #1 (7-30-						Out of range
SRC Gilbert 12-14-11NHZ - Wellbore #1 - Plan #1 (7-30-	17,486.1	7,687.3	796.1	644.4	5.248	CC, ES, SF

Offset Design Existing Wells Sec.26-T5N-R66W - Ashcroft #1 (P&A) - Wellbore #1 - Wellbore #1													Offset Site Error: 0.0ft
Survey Program: 7822-UNKNOWN													Offset Well Error: 0.0ft
Reference	Offset	Semi Major Axis		Distance									Warning
Measured Depth (ft)	Vertical Depth (ft)	Measured Depth (ft)	Vertical Depth (ft)	Reference (ft)	Offset (ft)	Highside Toolface (°)	Offset Wellbore Centre +N/-S (ft)	+E/-W (ft)	Between Centres (ft)	Between Ellipses (ft)	Minimum Separation (ft)	Separation Factor	
10,500.0	7,200.0	7,448.0	7,448.0	69.1	149.0	90.00	2,898.5	-1,929.0	782.3	578.7	203.64	3.842	
10,600.0	7,200.0	7,448.0	7,448.0	70.4	149.0	90.00	2,898.5	-1,929.0	725.3	519.9	205.36	3.532	
10,700.0	7,200.0	7,448.0	7,448.0	71.8	149.0	90.00	2,898.5	-1,929.0	678.2	471.1	207.09	3.275	
10,800.0	7,200.0	7,448.0	7,448.0	73.1	149.0	90.00	2,898.5	-1,929.0	643.4	434.5	208.83	3.081	
10,900.0	7,200.0	7,448.0	7,448.0	74.5	149.0	90.00	2,898.5	-1,929.0	622.8	412.2	210.59	2.958	
10,980.2	7,200.0	7,448.0	7,448.0	75.6	149.0	90.00	2,898.5	-1,929.0	617.6	405.6	212.00	2.913	CC
11,000.0	7,200.0	7,448.0	7,448.0	75.9	149.0	90.00	2,898.5	-1,929.0	618.0	405.6	212.35	2.910	ES, SF
11,100.0	7,200.0	7,448.0	7,448.0	77.4	149.0	90.00	2,898.5	-1,929.0	629.2	415.0	214.12	2.938	
11,200.0	7,200.0	7,448.0	7,448.0	78.8	149.0	90.00	2,898.5	-1,929.0	655.6	439.7	215.91	3.036	
11,300.0	7,200.0	7,448.0	7,448.0	80.3	149.0	90.00	2,898.5	-1,929.0	695.5	477.8	217.69	3.195	
11,400.0	7,200.0	7,448.0	7,448.0	81.8	149.0	90.00	2,898.5	-1,929.0	746.8	527.3	219.49	3.403	

Company:	Synergy Resources	Local Co-ordinate Reference:	Well SRC Evans G-26-23-14CHZ
Project:	SEC.26-T5N-R66W	TVD Reference:	WELL @ 4754.0ft (RKB - 13')
Reference Site:	SRC Evans West Pad Sec.26-T5N-R66W	MD Reference:	WELL @ 4754.0ft (RKB - 13')
Site Error:	0.0ft	North Reference:	True
Reference Well:	SRC Evans G-26-23-14CHZ	Survey Calculation Method:	Minimum Curvature
Well Error:	0.0ft	Output errors are at	2.00 sigma
Reference Wellbore	Wellbore #1	Database:	Landmark
Reference Design:	Plan #1 (10-20-14)	Offset TVD Reference:	Offset Datum

Offset Design Existing Wells Sec.26-T5N-R66W - Gilbert #4 (P&A) - Wellbore #1 - Wellbore #1												Offset Site Error:	0.0 ft
Survey Program: 7455-UNKNOWN												Offset Well Error:	0.0 ft
Reference		Offset		Semi Major Axis			Distance						
Measured Depth (ft)	Vertical Depth (ft)	Measured Depth (ft)	Vertical Depth (ft)	Reference (ft)	Offset (ft)	Highside Toolface (°)	Offset Wellbore Centre +N/-S (ft)	+E/-W (ft)	Between Centres (ft)	Between Ellipses (ft)	Minimum Separation (ft)	Separation Factor	Warning
16,600.0	7,200.0	7,326.0	7,326.0	172.7	146.5	90.00	9,200.8	-2,237.7	752.1	437.9	314.28	2.393	
16,700.0	7,200.0	7,326.0	7,326.0	174.6	146.5	90.00	9,200.8	-2,237.7	662.7	346.5	316.18	2.096	
16,800.0	7,200.0	7,326.0	7,326.0	176.4	146.5	90.00	9,200.8	-2,237.7	576.7	258.6	318.08	1.813	
16,900.0	7,200.0	7,326.0	7,326.0	178.3	146.5	90.00	9,200.8	-2,237.7	496.1	176.1	319.98	1.550	
17,000.0	7,200.0	7,326.0	7,326.0	180.1	146.5	90.00	9,200.8	-2,237.7	423.7	101.8	321.88	1.316	Level 3
17,100.0	7,200.0	7,326.0	7,326.0	182.0	146.5	90.00	9,200.8	-2,237.7	364.7	40.9	323.79	1.126	Level 2
17,200.0	7,200.0	7,326.0	7,326.0	183.8	146.5	90.00	9,200.8	-2,237.7	326.2	0.5	325.69	1.002	Level 2
17,282.7	7,200.0	7,326.0	7,326.0	185.4	146.5	90.00	9,200.8	-2,237.7	315.6	-11.7	327.26	0.964	Level 1, CC, ES, SF
17,300.0	7,200.0	7,326.0	7,326.0	185.7	146.5	90.00	9,200.8	-2,237.7	316.0	-11.6	327.59	0.965	Level 1
17,400.0	7,200.0	7,326.0	7,326.0	187.6	146.5	90.00	9,200.8	-2,237.7	336.6	7.2	329.49	1.022	Level 2
17,486.1	7,200.0	7,326.0	7,326.0	189.2	146.5	90.00	9,200.8	-2,237.7	375.4	44.3	331.13	1.134	Level 2

Company:	Synergy Resources	Local Co-ordinate Reference:	Well SRC Evans G-26-23-14CHZ
Project:	SEC.26-T5N-R66W	TVD Reference:	WELL @ 4754.0ft (RKB - 13')
Reference Site:	SRC Evans West Pad Sec.26-T5N-R66W	MD Reference:	WELL @ 4754.0ft (RKB - 13')
Site Error:	0.0ft	North Reference:	True
Reference Well:	SRC Evans G-26-23-14CHZ	Survey Calculation Method:	Minimum Curvature
Well Error:	0.0ft	Output errors are at	2.00 sigma
Reference Wellbore	Wellbore #1	Database:	Landmark
Reference Design:	Plan #1 (10-20-14)	Offset TVD Reference:	Offset Datum

Offset Design Existing Wells Sec.26-T5N-R66W - Wiedeman #4 (Exist) - Wellbore #1 - Wellbore #1													Offset Site Error: 0.0 ft
Survey Program: 7290-UNKNOWN													Offset Well Error: 0.0 ft
Reference		Offset		Semi Major Axis			Distance						Warning
Measured Depth (ft)	Vertical Depth (ft)	Measured Depth (ft)	Vertical Depth (ft)	Reference (ft)	Offset (ft)	Highside Toolface (°)	Offset Wellbore Centre +N/-S (ft)	+E/-W (ft)	Between Centres (ft)	Between Ellipses (ft)	Minimum Separation (ft)	Separation Factor	
7,450.0	6,922.8	6,900.8	6,900.8	53.5	138.0	51.96	233.6	-2,210.4	798.7	636.0	162.65	4.911	
7,500.0	6,959.5	6,937.5	6,937.5	53.7	138.7	51.91	233.6	-2,210.4	773.9	614.7	159.20	4.861	
7,550.0	6,994.1	6,972.1	6,972.1	53.8	139.4	52.55	233.6	-2,210.4	746.9	590.9	156.01	4.788	
7,600.0	7,026.5	7,004.5	7,004.5	53.9	140.1	53.87	233.6	-2,210.4	718.1	564.7	153.35	4.683	
7,650.0	7,056.5	7,034.5	7,034.5	54.0	140.7	55.83	233.6	-2,210.4	687.6	536.1	151.50	4.539	
7,700.0	7,083.9	7,061.9	7,061.9	54.1	141.2	58.43	233.6	-2,210.4	655.8	505.1	150.70	4.352	
7,750.0	7,108.7	7,086.7	7,086.7	54.1	141.7	61.61	233.6	-2,210.4	622.8	471.7	151.12	4.121	
7,800.0	7,130.8	7,108.8	7,108.8	54.2	142.2	65.31	233.6	-2,210.4	589.2	436.4	152.79	3.856	
7,850.0	7,149.9	7,127.9	7,127.9	54.2	142.6	69.40	233.6	-2,210.4	555.1	399.6	155.48	3.570	
7,900.0	7,166.0	7,144.0	7,144.0	54.2	142.9	73.71	233.6	-2,210.4	521.1	362.4	158.75	3.283	
7,950.0	7,179.1	7,157.1	7,157.1	54.2	143.1	78.01	233.6	-2,210.4	487.7	325.7	162.00	3.010	
8,000.0	7,189.1	7,167.1	7,167.1	54.2	143.3	82.07	233.6	-2,210.4	455.4	290.6	164.76	2.764	
8,050.0	7,195.8	7,173.8	7,173.8	54.2	143.5	85.66	233.6	-2,210.4	424.9	258.1	166.76	2.548	
8,100.0	7,199.4	7,177.4	7,177.4	54.2	143.5	88.60	233.6	-2,210.4	396.9	228.9	168.03	2.362	
8,130.3	7,200.0	7,178.0	7,178.0	54.2	143.6	90.00	233.6	-2,210.4	381.5	213.0	168.50	2.264	
8,200.0	7,200.0	7,178.0	7,178.0	54.1	143.6	90.00	233.6	-2,210.4	353.0	184.2	168.75	2.092	
8,300.0	7,200.0	7,178.0	7,178.0	54.1	143.6	90.00	233.6	-2,210.4	333.9	164.7	169.17	1.974	
8,315.6	7,200.0	7,178.0	7,178.0	54.1	143.6	90.00	233.6	-2,210.4	333.5	164.2	169.26	1.970 CC, ES, SF	
8,400.0	7,200.0	7,178.0	7,178.0	54.2	143.6	90.00	233.6	-2,210.4	344.0	174.3	169.72	2.027	
8,500.0	7,200.0	7,178.0	7,178.0	54.3	143.6	90.00	233.6	-2,210.4	381.1	210.7	170.40	2.236	
8,600.0	7,200.0	7,178.0	7,178.0	54.5	143.6	90.00	233.6	-2,210.4	438.3	267.1	171.20	2.560	
8,700.0	7,200.0	7,178.0	7,178.0	54.7	143.6	90.00	233.6	-2,210.4	508.9	336.8	172.10	2.957	
8,800.0	7,200.0	7,178.0	7,178.0	55.0	143.6	90.00	233.6	-2,210.4	588.1	415.0	173.10	3.398	
8,900.0	7,200.0	7,178.0	7,178.0	55.3	143.6	90.00	233.6	-2,210.4	672.9	498.7	174.19	3.863	
9,000.0	7,200.0	7,178.0	7,178.0	55.7	143.6	90.00	233.6	-2,210.4	761.4	586.0	175.36	4.342	

Company:	Synergy Resources	Local Co-ordinate Reference:	Well SRC Evans G-26-23-14CHZ
Project:	SEC.26-T5N-R66W	TVD Reference:	WELL @ 4754.0ft (RKB - 13')
Reference Site:	SRC Evans West Pad Sec.26-T5N-R66W	MD Reference:	WELL @ 4754.0ft (RKB - 13')
Site Error:	0.0ft	North Reference:	True
Reference Well:	SRC Evans G-26-23-14CHZ	Survey Calculation Method:	Minimum Curvature
Well Error:	0.0ft	Output errors are at	2.00 sigma
Reference Wellbore	Wellbore #1	Database:	Landmark
Reference Design:	Plan #1 (10-20-14)	Offset TVD Reference:	Offset Datum

Offset Design Existing Wells Sec.26-T5N-R66W - Wiedeman J26-4 (Exist) - Wellbore #1 - Wellbore #1												Offset Site Error:	0.0 ft
Survey Program: 7331-UNKNOWN												Offset Well Error:	0.0 ft
Reference		Offset		Semi Major Axis			Distance						
Measured Depth (ft)	Vertical Depth (ft)	Measured Depth (ft)	Vertical Depth (ft)	Reference (ft)	Offset (ft)	Highside Toolface (°)	Offset Wellbore Centre +N/-S (ft)	+E/-W (ft)	Between Centres (ft)	Between Ellipses (ft)	Minimum Separation (ft)	Separation Factor	Warning
8,700.0	7,200.0	7,208.0	7,208.0	54.7	144.2	90.00	1,279.2	-2,235.4	730.1	557.4	172.70	4.227	
8,800.0	7,200.0	7,208.0	7,208.0	55.0	144.2	90.00	1,279.2	-2,235.4	640.9	467.2	173.70	3.690	
8,900.0	7,200.0	7,208.0	7,208.0	55.3	144.2	90.00	1,279.2	-2,235.4	555.5	380.7	174.79	3.178	
9,000.0	7,200.0	7,208.0	7,208.0	55.7	144.2	90.00	1,279.2	-2,235.4	475.7	299.7	175.96	2.704	
9,100.0	7,200.0	7,208.0	7,208.0	56.2	144.2	90.00	1,279.2	-2,235.4	405.0	227.9	177.20	2.286	
9,200.0	7,200.0	7,208.0	7,208.0	56.7	144.2	90.00	1,279.2	-2,235.4	349.0	170.5	178.50	1.955	
9,300.0	7,200.0	7,208.0	7,208.0	57.3	144.2	90.00	1,279.2	-2,235.4	315.6	135.7	179.85	1.755	
9,361.2	7,200.0	7,208.0	7,208.0	57.7	144.2	90.00	1,279.2	-2,235.4	309.6	128.9	180.71	1.713	CC, ES, SF
9,400.0	7,200.0	7,208.0	7,208.0	58.0	144.2	90.00	1,279.2	-2,235.4	312.0	130.8	181.26	1.722	
9,500.0	7,200.0	7,208.0	7,208.0	58.7	144.2	90.00	1,279.2	-2,235.4	339.3	156.6	182.71	1.857	
9,600.0	7,200.0	7,208.0	7,208.0	59.5	144.2	90.00	1,279.2	-2,235.4	391.0	206.8	184.20	2.123	
9,700.0	7,200.0	7,208.0	7,208.0	60.4	144.2	90.00	1,279.2	-2,235.4	459.0	273.3	185.73	2.471	
9,800.0	7,200.0	7,208.0	7,208.0	61.3	144.2	90.00	1,279.2	-2,235.4	537.1	349.8	187.29	2.868	
9,900.0	7,200.0	7,208.0	7,208.0	62.3	144.2	90.00	1,279.2	-2,235.4	621.5	432.6	188.87	3.290	
10,000.0	7,200.0	7,208.0	7,208.0	63.3	144.2	90.00	1,279.2	-2,235.4	709.9	519.4	190.48	3.727	

Company:	Synergy Resources	Local Co-ordinate Reference:	Well SRC Evans G-26-23-14CHZ
Project:	SEC.26-T5N-R66W	TVD Reference:	WELL @ 4754.0ft (RKB - 13')
Reference Site:	SRC Evans West Pad Sec.26-T5N-R66W	MD Reference:	WELL @ 4754.0ft (RKB - 13')
Site Error:	0.0ft	North Reference:	True
Reference Well:	SRC Evans G-26-23-14CHZ	Survey Calculation Method:	Minimum Curvature
Well Error:	0.0ft	Output errors are at	2.00 sigma
Reference Wellbore	Wellbore #1	Database:	Landmark
Reference Design:	Plan #1 (10-20-14)	Offset TVD Reference:	Offset Datum

Offset Design SRC Evans Center Pad Sec.26-T5N-R66W - SRC Evans 23-26-23-14CHZ - Wellbore #1 - Plan #1 (10-													Offset Site Error:	0.0 ft
Survey Program: 0-MWD													Offset Well Error:	0.0 ft
Reference	Offset	Semi Major Axis		Distance										Warning
Measured Depth (ft)	Vertical Depth (ft)	Measured Depth (ft)	Vertical Depth (ft)	Reference (ft)	Offset (ft)	Highside Toolface (°)	Offset Wellbore Centre +N/-S (ft)	+E/-W (ft)	Between Centres (ft)	Between Ellipses (ft)	Minimum Separation (ft)	Separation Factor		
0.0	0.0	8.0	8.0	0.0	0.0	100.98	-89.3	460.0	468.6	468.6	0.01	N/A		
100.0	100.0	108.0	108.0	0.1	0.1	100.98	-89.3	460.0	468.6	468.4	0.24	1,930.429		
200.0	200.0	208.0	208.0	0.3	0.4	100.98	-89.3	460.0	468.6	467.9	0.69	676.904		
300.0	300.0	308.0	308.0	0.6	0.6	100.98	-89.3	460.0	468.6	467.5	1.14	410.406		
400.0	400.0	408.3	408.3	0.8	0.8	100.98	-89.3	460.0	468.6	467.0	1.59	294.740		
402.2	402.2	410.6	410.6	0.8	0.8	-152.53	-89.3	460.0	468.6	467.0	1.60	293.058 CC, ES		
500.0	500.0	511.4	511.4	1.0	1.0	-152.36	-91.3	459.2	469.8	467.8	2.00	234.401		
600.0	599.8	614.3	614.1	1.2	1.2	-151.94	-96.7	457.1	473.4	471.0	2.41	196.350		
700.0	699.5	717.0	716.3	1.4	1.4	-151.26	-105.5	453.5	479.4	476.6	2.86	167.716		
800.0	798.7	816.9	815.6	1.7	1.7	-150.52	-116.2	449.2	488.2	484.9	3.35	145.794		
900.0	897.5	916.1	914.1	2.0	2.0	-149.98	-126.9	445.0	500.1	496.2	3.87	129.199		
1,000.0	995.6	1,015.0	1,012.3	2.4	2.3	-149.61	-137.6	440.7	515.0	510.5	4.42	116.473		
1,100.0	1,093.1	1,113.4	1,110.0	2.8	2.6	-149.42	-148.1	436.5	532.8	527.8	5.00	106.588		
1,200.0	1,189.6	1,211.2	1,207.2	3.3	2.8	-149.39	-158.7	432.3	553.6	548.0	5.60	98.825		
1,300.0	1,285.3	1,308.2	1,303.6	3.9	3.1	-149.49	-169.1	428.1	577.3	571.1	6.23	92.680		
1,400.0	1,379.8	1,404.5	1,399.2	4.5	3.4	-149.70	-179.5	424.0	604.0	597.1	6.88	87.798		
1,500.0	1,473.2	1,499.8	1,493.9	5.2	3.7	-150.00	-189.7	419.9	633.6	626.1	7.55	83.917		
1,555.5	1,524.4	1,552.2	1,546.0	5.6	3.9	-150.20	-195.4	417.6	651.3	643.4	7.93	82.121		
1,600.0	1,565.4	1,594.1	1,587.6	6.0	4.0	-150.51	-199.9	415.8	665.9	657.7	8.25	80.713		
1,700.0	1,657.3	1,688.3	1,681.1	6.8	4.3	-151.17	-210.0	411.8	698.7	689.8	8.97	77.896		
1,800.0	1,749.3	1,782.5	1,774.6	7.6	4.6	-151.77	-220.2	407.7	731.6	721.9	9.69	75.490		
1,900.0	1,841.3	1,876.6	1,868.2	8.4	4.9	-152.31	-230.3	403.7	764.6	754.2	10.41	73.419		
2,000.0	1,933.3	1,970.8	1,961.7	9.2	5.2	-152.81	-240.4	399.6	797.6	786.5	11.14	71.624 SF		

Company:	Synergy Resources	Local Co-ordinate Reference:	Well SRC Evans G-26-23-14CHZ
Project:	SEC.26-T5N-R66W	TVD Reference:	WELL @ 4754.0ft (RKB - 13')
Reference Site:	SRC Evans West Pad Sec.26-T5N-R66W	MD Reference:	WELL @ 4754.0ft (RKB - 13')
Site Error:	0.0ft	North Reference:	True
Reference Well:	SRC Evans G-26-23-14CHZ	Survey Calculation Method:	Minimum Curvature
Well Error:	0.0ft	Output errors are at	2.00 sigma
Reference Wellbore	Wellbore #1	Database:	Landmark
Reference Design:	Plan #1 (10-20-14)	Offset TVD Reference:	Offset Datum

Offset Design		SRC Evans Center Pad Sec.26-T5N-R66W - SRC Evans O-26-23-14CHZ - Wellbore #1 - Plan #1 (10-2										Offset Site Error:		0.0 ft
Survey Program: 0-MWD												Offset Well Error:		0.0 ft
Reference		Offset		Semi Major Axis			Distance							Warning
Measured Depth Vertical Depth (ft)	Vertical Depth (ft)	Measured Depth (ft)	Vertical Depth (ft)	Reference (ft)	Offset (ft)	Highside Toolface (°)	Offset Wellbore Centre +N/-S (ft)	+E/-W (ft)	Between Centres (ft)	Between Ellipses (ft)	Minimum Separation (ft)	Separation Factor		
0.0	0.0	9.0	9.0	0.0	0.0	92.72	-21.9	460.0	460.5	460.5	0.01	N/A		
100.0	100.0	109.0	109.0	0.1	0.1	92.72	-21.9	460.0	460.5	460.3	0.24	1,879.818		
200.0	200.0	209.0	209.0	0.3	0.4	92.72	-21.9	460.0	460.5	459.9	0.69	663.107		
300.0	300.0	309.0	309.0	0.6	0.6	92.72	-21.9	460.0	460.5	459.4	1.14	402.554		
400.0	400.0	409.0	409.0	0.8	0.8	92.72	-21.9	460.0	460.5	459.0	1.59	288.999	CC, ES	
500.0	500.0	509.0	509.0	1.0	1.0	-160.85	-21.9	460.0	462.2	460.2	2.03	227.765		
600.0	599.8	608.8	608.8	1.2	1.3	-161.03	-21.9	460.0	467.1	464.7	2.46	189.914		
700.0	699.5	708.5	708.5	1.4	1.5	-161.32	-21.9	460.0	475.4	472.5	2.90	163.963		
800.0	798.7	807.7	807.7	1.7	1.7	-161.71	-21.9	460.0	487.0	483.6	3.35	145.518		
900.0	897.5	906.5	906.5	2.0	1.9	-162.17	-21.9	460.0	501.8	498.0	3.80	132.060		
1,000.0	995.6	1,005.4	1,005.4	2.4	2.1	-162.71	-21.9	460.0	520.1	515.8	4.26	122.055		
1,100.0	1,093.1	1,119.4	1,119.4	2.8	2.4	-163.24	-23.4	458.1	540.0	535.3	4.73	114.222		
1,200.0	1,189.6	1,234.3	1,234.1	3.3	2.6	-163.55	-28.0	452.7	560.2	555.0	5.19	107.943		
1,300.0	1,285.3	1,350.1	1,349.2	3.9	2.8	-163.65	-35.5	443.6	580.7	575.0	5.68	102.170		
1,400.0	1,379.8	1,466.6	1,464.5	4.5	3.1	-163.56	-46.1	430.9	601.3	595.1	6.22	96.719		
1,500.0	1,473.2	1,583.8	1,579.8	5.2	3.5	-163.29	-59.7	414.4	622.2	615.4	6.80	91.451		
1,555.5	1,524.4	1,645.5	1,640.1	5.6	3.7	-163.09	-68.1	404.4	633.8	626.7	7.14	88.731		
1,600.0	1,565.4	1,688.9	1,682.5	6.0	3.8	-162.99	-74.1	397.1	643.5	636.0	7.43	86.557		
1,700.0	1,657.3	1,786.6	1,777.7	6.8	4.2	-162.79	-87.7	380.8	665.0	656.9	8.11	82.018		
1,800.0	1,749.3	1,884.2	1,873.0	7.6	4.6	-162.60	-101.3	364.5	686.6	677.8	8.80	77.982		
1,900.0	1,841.3	1,981.8	1,968.3	8.4	5.0	-162.42	-114.8	348.1	708.2	698.7	9.52	74.405		
2,000.0	1,933.3	2,079.4	2,063.6	9.2	5.4	-162.25	-128.4	331.8	729.8	719.6	10.25	71.208		
2,100.0	2,025.2	2,177.0	2,158.9	10.1	5.8	-162.09	-141.9	315.5	751.4	740.4	10.99	68.362		
2,200.0	2,117.2	2,274.6	2,254.1	10.9	6.2	-161.94	-155.5	299.2	773.1	761.3	11.75	65.818		
2,300.0	2,209.2	2,372.3	2,349.4	11.7	6.7	-161.80	-169.1	282.8	794.7	782.2	12.51	63.535	SF	

Company:	Synergy Resources	Local Co-ordinate Reference:	Well SRC Evans G-26-23-14CHZ
Project:	SEC.26-T5N-R66W	TVD Reference:	WELL @ 4754.0ft (RKB - 13')
Reference Site:	SRC Evans West Pad Sec.26-T5N-R66W	MD Reference:	WELL @ 4754.0ft (RKB - 13')
Site Error:	0.0ft	North Reference:	True
Reference Well:	SRC Evans G-26-23-14CHZ	Survey Calculation Method:	Minimum Curvature
Well Error:	0.0ft	Output errors are at	2.00 sigma
Reference Wellbore	Wellbore #1	Database:	Landmark
Reference Design:	Plan #1 (10-20-14)	Offset TVD Reference:	Offset Datum

Offset Design												Offset Site Error:		0.0 ft	
Survey Program: 0-MWD												Offset Well Error:		0.0 ft	
Reference		Offset		Semi Major Axis			Distance							Warning	
Measured Depth	Vertical Depth	Measured Depth	Vertical Depth	Reference	Offset	Highside Toolface	Offset Wellbore Centre		Between Centres	Between Ellipses	Minimum Separation	Separation Factor			
(ft)	(ft)	(ft)	(ft)	(ft)	(ft)	(°)	+N/-S (ft)	+E/-W (ft)	(ft)	(ft)	(ft)				
0.0	0.0	10.0	10.0	0.0	0.0	87.10	23.3	459.7	460.3	460.3	0.01	N/A			
100.0	100.0	110.0	110.0	0.1	0.1	87.10	23.3	459.7	460.3	460.1	0.25	1,861.890			
200.0	200.0	210.0	210.0	0.3	0.4	87.10	23.3	459.7	460.3	459.6	0.70	660.671			
300.0	300.0	310.0	310.0	0.6	0.6	87.10	23.3	459.7	460.3	459.2	1.15	401.584			
400.0	400.0	410.0	410.0	0.8	0.8	87.10	23.3	459.7	460.3	458.7	1.60	288.462 CC, ES			
500.0	500.0	510.0	510.0	1.0	1.0	-166.46	23.3	459.7	462.0	460.0	2.03	227.417			
600.0	599.8	609.8	609.8	1.2	1.3	-166.59	23.3	459.7	467.1	464.7	2.46	189.731			
700.0	699.5	709.5	709.5	1.4	1.5	-166.79	23.3	459.7	475.6	472.7	2.90	163.972			
800.0	798.7	808.7	808.7	1.7	1.7	-167.06	23.3	459.7	487.5	484.1	3.34	145.743			
900.0	897.5	907.5	907.5	2.0	1.9	-167.40	23.3	459.7	502.7	499.0	3.79	132.515			
1,000.0	995.6	1,005.6	1,005.6	2.4	2.1	-167.77	23.3	459.7	521.4	517.1	4.25	122.755			
1,100.0	1,093.1	1,103.1	1,103.1	2.8	2.4	-168.18	23.3	459.7	543.4	538.7	4.71	115.492			
1,200.0	1,189.6	1,199.6	1,199.6	3.3	2.6	-168.61	23.3	459.7	568.8	563.6	5.17	110.081			
1,300.0	1,285.3	1,295.3	1,295.3	3.9	2.8	-169.05	23.3	459.7	597.5	591.9	5.63	106.081			
1,400.0	1,379.8	1,389.8	1,389.8	4.5	3.0	-169.49	23.3	459.7	629.6	623.5	6.10	103.177			
1,500.0	1,473.2	1,505.0	1,505.0	5.2	3.2	-169.97	22.3	458.1	663.5	657.0	6.59	100.732			
1,555.5	1,524.4	1,571.1	1,571.0	5.6	3.4	-170.17	20.5	455.5	682.3	675.5	6.85	99.632			
1,600.0	1,565.4	1,624.7	1,624.5	6.0	3.5	-170.35	18.5	452.4	697.0	689.9	7.08	98.426			
1,700.0	1,657.3	1,747.4	1,746.6	6.8	3.7	-170.57	11.8	442.2	727.3	719.7	7.63	95.334			
1,800.0	1,749.3	1,873.1	1,870.9	7.6	4.0	-170.59	1.9	427.2	754.0	745.7	8.21	91.812			
1,900.0	1,841.3	2,001.3	1,996.9	8.4	4.4	-170.43	-11.2	407.2	776.7	767.9	8.83	87.915			
2,000.0	1,933.3	2,131.6	2,123.6	9.2	4.8	-170.08	-27.7	382.1	795.5	786.0	9.51	83.623 SF			

Company:	Synergy Resources	Local Co-ordinate Reference:	Well SRC Evans G-26-23-14CHZ
Project:	SEC.26-T5N-R66W	TVD Reference:	WELL @ 4754.0ft (RKB - 13')
Reference Site:	SRC Evans West Pad Sec.26-T5N-R66W	MD Reference:	WELL @ 4754.0ft (RKB - 13')
Site Error:	0.0ft	North Reference:	True
Reference Well:	SRC Evans G-26-23-14CHZ	Survey Calculation Method:	Minimum Curvature
Well Error:	0.0ft	Output errors are at	2.00 sigma
Reference Wellbore	Wellbore #1	Database:	Landmark
Reference Design:	Plan #1 (10-20-14)	Offset TVD Reference:	Offset Datum

Offset Design													Offset Site Error:	0.0 ft
Survey Program: 0-MWD													Offset Well Error:	0.0 ft
Reference		Offset		Semi Major Axis			Distance							Warning
Measured Depth (ft)	Vertical Depth (ft)	Measured Depth (ft)	Vertical Depth (ft)	Reference (ft)	Offset (ft)	Highside Toolface (°)	Offset Wellbore Centre +N/-S (ft)	+E/-W (ft)	Between Centres (ft)	Between Ellipses (ft)	Minimum Separation (ft)	Separation Factor		
0.0	0.0	0.0	0.0	0.0	0.0	180.00	-44.8	0.0	44.8					
100.0	100.0	99.0	99.0	0.1	0.1	180.00	-44.8	0.0	44.8	44.6	0.22	200.364		
200.0	200.0	199.0	199.0	0.3	0.3	180.00	-44.8	0.0	44.8	44.1	0.67	66.677		
300.0	300.0	299.0	299.0	0.6	0.6	180.00	-44.8	0.0	44.8	43.7	1.12	39.953		
400.0	400.0	399.0	399.0	0.8	0.8	180.00	-44.8	0.0	44.8	43.2	1.57	28.521		
500.0	500.0	499.0	499.0	1.0	1.0	-75.68	-44.8	0.0	44.3	42.3	2.01	22.115		
600.0	599.8	598.8	598.8	1.2	1.2	-82.41	-44.8	0.0	43.3	40.9	2.44	17.780		
670.0	669.6	668.6	668.6	1.4	1.4	-90.00	-44.8	0.0	43.0	40.2	2.76	15.577 CC		
700.0	699.5	698.5	698.5	1.4	1.5	-93.94	-44.8	0.0	43.1	40.2	2.90	14.872 ES		
800.0	798.7	797.7	797.7	1.7	1.7	-109.26	-44.8	0.0	45.6	42.2	3.38	13.474		
900.0	897.5	897.4	897.4	2.0	1.9	-123.84	-45.4	-1.6	52.0	48.1	3.86	13.470		
1,000.0	995.6	997.6	997.4	2.4	2.1	-134.58	-47.1	-6.4	61.2	56.9	4.33	14.146		
1,100.0	1,093.1	1,098.3	1,097.7	2.8	2.3	-142.22	-50.0	-14.6	72.0	67.3	4.80	15.018		
1,200.0	1,189.6	1,199.5	1,198.2	3.3	2.6	-147.68	-54.2	-26.2	83.9	78.6	5.28	15.883		
1,300.0	1,285.3	1,301.2	1,298.6	3.9	2.8	-151.64	-59.6	-41.2	96.4	90.6	5.79	16.649		
1,400.0	1,379.8	1,403.4	1,398.9	4.5	3.2	-154.57	-66.2	-59.6	109.3	103.0	6.33	17.281		
1,500.0	1,473.2	1,506.1	1,499.0	5.2	3.6	-156.77	-74.0	-81.5	122.4	115.5	6.89	17.770		
1,555.5	1,524.4	1,563.4	1,554.4	5.6	3.8	-157.76	-78.9	-95.2	129.8	122.5	7.22	17.976		
1,600.0	1,565.4	1,609.4	1,598.7	6.0	4.0	-158.44	-83.2	-106.9	135.3	127.8	7.51	18.033		
1,700.0	1,657.3	1,713.5	1,698.1	6.8	4.6	-159.35	-93.6	-135.9	145.5	137.3	8.20	17.757		
1,800.0	1,749.3	1,816.7	1,795.6	7.6	5.2	-159.61	-105.0	-167.9	152.6	143.7	8.94	17.074		
1,900.0	1,841.3	1,916.5	1,889.5	8.4	5.8	-159.71	-116.4	-199.6	158.8	149.1	9.71	16.356		
2,000.0	1,933.3	2,016.3	1,983.5	9.2	6.5	-159.81	-127.8	-231.3	165.1	154.6	10.49	15.731		
2,100.0	2,025.2	2,116.1	2,077.4	10.1	7.1	-159.90	-139.2	-263.0	171.3	160.0	11.29	15.179		
2,200.0	2,117.2	2,215.9	2,171.4	10.9	7.8	-159.98	-150.5	-294.7	177.6	165.5	12.09	14.690		
2,300.0	2,209.2	2,315.7	2,265.3	11.7	8.5	-160.05	-161.9	-326.4	183.8	170.9	12.90	14.255		
2,400.0	2,301.2	2,415.6	2,359.3	12.6	9.2	-160.12	-173.3	-358.2	190.1	176.4	13.71	13.866		
2,500.0	2,393.1	2,515.4	2,453.2	13.4	9.9	-160.19	-184.6	-389.9	196.3	181.8	14.52	13.517		
2,600.0	2,485.1	2,615.2	2,547.2	14.2	10.6	-160.25	-196.0	-421.6	202.6	187.2	15.34	13.202		
2,700.0	2,577.1	2,715.0	2,641.1	15.1	11.3	-160.31	-207.4	-453.3	208.8	192.7	16.17	12.918		
2,800.0	2,669.1	2,814.8	2,735.0	15.9	12.0	-160.37	-218.8	-485.0	215.1	198.1	16.99	12.659		
2,900.0	2,761.0	2,914.6	2,829.0	16.7	12.7	-160.42	-230.1	-516.7	221.3	203.5	17.82	12.422		
3,000.0	2,853.0	3,014.4	2,922.9	17.6	13.4	-160.47	-241.5	-548.4	227.6	208.9	18.64	12.206		
3,100.0	2,945.0	3,114.2	3,016.9	18.4	14.1	-160.51	-252.9	-580.1	233.8	214.3	19.47	12.007		
3,200.0	3,037.0	3,214.0	3,110.8	19.3	14.8	-160.56	-264.3	-611.8	240.1	219.8	20.30	11.824		
3,300.0	3,128.9	3,313.8	3,204.8	20.1	15.5	-160.60	-275.6	-643.5	246.3	225.2	21.13	11.655		
3,400.0	3,220.9	3,413.6	3,298.7	21.0	16.2	-160.64	-287.0	-675.2	252.6	230.6	21.97	11.498		
3,500.0	3,312.9	3,513.4	3,392.7	21.8	16.9	-160.68	-298.4	-706.9	258.8	236.0	22.80	11.353		
3,600.0	3,404.9	3,613.2	3,486.6	22.6	17.7	-160.71	-309.8	-738.7	265.1	241.4	23.63	11.217		
3,700.0	3,496.8	3,713.0	3,580.6	23.5	18.4	-160.75	-321.1	-770.4	271.3	246.8	24.46	11.090		
3,800.0	3,588.8	3,812.8	3,674.5	24.3	19.1	-160.78	-332.5	-802.1	277.6	252.3	25.30	10.972		
3,900.0	3,680.8	3,912.6	3,768.5	25.2	19.8	-160.81	-343.9	-833.8	283.8	257.7	26.13	10.860		
4,000.0	3,772.8	4,012.4	3,862.4	26.0	20.5	-160.84	-355.2	-865.5	290.1	263.1	26.97	10.756		
4,100.0	3,864.7	4,112.2	3,956.4	26.9	21.2	-160.87	-366.6	-897.2	296.3	268.5	27.80	10.658		
4,200.0	3,956.7	4,212.0	4,050.3	27.7	21.9	-160.90	-378.0	-928.9	302.6	273.9	28.64	10.565		
4,300.0	4,048.7	4,311.8	4,144.3	28.6	22.7	-160.93	-389.4	-960.6	308.8	279.3	29.47	10.478		
4,400.0	4,140.7	4,411.6	4,238.2	29.4	23.4	-160.95	-400.7	-992.3	315.1	284.7	30.31	10.395		
4,500.0	4,232.6	4,511.4	4,332.2	30.2	24.1	-160.98	-412.1	-1,024.0	321.3	290.2	31.14	10.317		
4,600.0	4,324.6	4,611.2	4,426.1	31.1	24.8	-161.00	-423.5	-1,055.7	327.6	295.6	31.98	10.242		
4,700.0	4,416.6	4,711.1	4,520.1	31.9	25.5	-161.02	-434.9	-1,087.4	333.8	301.0	32.82	10.172		
4,800.0	4,508.6	4,810.9	4,614.0	32.8	26.2	-161.04	-446.2	-1,119.2	340.1	306.4	33.65	10.105		
4,900.0	4,600.5	4,910.7	4,707.9	33.6	27.0	-161.07	-457.6	-1,150.9	346.3	311.8	34.49	10.041		

CC - Min centre to center distance or convergent point, SF - min separation factor, ES - min ellipse separation

Company:	Synergy Resources	Local Co-ordinate Reference:	Well SRC Evans G-26-23-14CHZ
Project:	SEC.26-T5N-R66W	TVD Reference:	WELL @ 4754.0ft (RKB - 13')
Reference Site:	SRC Evans West Pad Sec.26-T5N-R66W	MD Reference:	WELL @ 4754.0ft (RKB - 13')
Site Error:	0.0ft	North Reference:	True
Reference Well:	SRC Evans G-26-23-14CHZ	Survey Calculation Method:	Minimum Curvature
Well Error:	0.0ft	Output errors are at	2.00 sigma
Reference Wellbore	Wellbore #1	Database:	Landmark
Reference Design:	Plan #1 (10-20-14)	Offset TVD Reference:	Offset Datum

Offset Design													Offset Site Error:	0.0 ft
Survey Program: 0-MWD													Offset Well Error:	0.0 ft
Reference		Offset		Semi Major Axis			Distance							Warning
Measured Depth (ft)	Vertical Depth (ft)	Measured Depth (ft)	Vertical Depth (ft)	Reference (ft)	Offset (ft)	Highside Toolface (°)	Offset Wellbore Centre +N/-S (ft)	+E/-W (ft)	Between Centres (ft)	Between Ellipses (ft)	Minimum Separation (ft)	Separation Factor		
5,000.0	4,692.5	5,010.5	4,801.9	34.5	27.7	-161.09	-469.0	-1,182.6	352.6	317.2	35.33	9.980		
5,100.0	4,784.5	5,110.3	4,895.8	35.3	28.4	-161.11	-480.3	-1,214.3	358.8	322.6	36.16	9.922		
5,200.0	4,876.5	5,210.1	4,989.8	36.2	29.1	-161.12	-491.7	-1,246.0	365.1	328.1	37.00	9.866		
5,300.0	4,968.4	5,309.9	5,083.7	37.0	29.8	-161.14	-503.1	-1,277.7	371.3	333.5	37.84	9.813		
5,400.0	5,060.4	5,409.7	5,177.7	37.8	30.6	-161.16	-514.5	-1,309.4	377.6	338.9	38.67	9.763		
5,500.0	5,152.4	5,509.5	5,271.6	38.7	31.3	-161.18	-525.8	-1,341.1	383.8	344.3	39.51	9.714		
5,600.0	5,244.4	5,609.3	5,365.6	39.5	32.0	-161.19	-537.2	-1,372.8	390.1	349.7	40.35	9.667		
5,700.0	5,336.3	5,709.1	5,459.5	40.4	32.7	-161.21	-548.6	-1,404.5	396.3	355.1	41.19	9.623		
5,800.0	5,428.3	5,808.9	5,553.5	41.2	33.4	-161.23	-560.0	-1,436.2	402.6	360.5	42.02	9.580		
5,900.0	5,520.3	5,908.7	5,647.4	42.1	34.2	-161.24	-571.3	-1,467.9	408.8	366.0	42.86	9.538		
6,000.0	5,612.3	6,008.5	5,741.4	42.9	34.9	-161.26	-582.7	-1,499.7	415.1	371.4	43.70	9.499		
6,100.0	5,704.2	6,108.3	5,835.3	43.8	35.6	-161.27	-594.1	-1,531.4	421.3	376.8	44.53	9.461		
6,200.0	5,796.2	6,208.1	5,929.3	44.6	36.3	-161.28	-605.5	-1,563.1	427.6	382.2	45.37	9.424		
6,300.0	5,888.2	6,307.9	6,023.2	45.5	37.0	-161.30	-616.8	-1,594.8	433.8	387.6	46.21	9.388		
6,400.0	5,980.2	6,407.7	6,117.2	46.3	37.7	-161.31	-628.2	-1,626.5	440.1	393.0	47.05	9.354		
6,500.0	6,072.1	6,507.5	6,211.1	47.2	38.5	-161.32	-639.6	-1,658.2	446.3	398.4	47.88	9.321		
6,600.0	6,164.1	6,607.3	6,305.1	48.0	39.2	-161.33	-650.9	-1,689.9	452.6	403.8	48.72	9.289		
6,700.0	6,256.1	6,707.1	6,399.0	48.8	39.9	-161.35	-662.3	-1,721.6	458.8	409.3	49.56	9.258		
6,800.0	6,348.1	6,808.7	6,494.8	49.7	40.6	-161.60	-671.9	-1,753.9	465.0	414.8	50.19	9.265		
6,900.0	6,440.0	6,909.8	6,590.4	50.5	41.1	-163.39	-668.8	-1,786.2	470.7	421.2	49.56	9.498		
6,925.6	6,463.6	6,934.9	6,614.0	50.8	41.2	-164.09	-665.8	-1,794.2	472.3	423.0	49.22	9.594		
6,950.0	6,486.1	6,958.5	6,636.1	50.9	41.3	-169.42	-662.2	-1,801.7	473.8	425.0	48.79	9.711		
7,000.0	6,532.3	7,006.3	6,680.5	51.3	41.5	179.28	-652.6	-1,816.7	477.2	429.2	47.94	9.954		
7,050.0	6,578.5	7,053.3	6,723.4	51.6	41.7	167.95	-640.1	-1,831.2	480.8	433.7	47.17	10.193		
7,100.0	6,624.6	7,100.0	6,765.2	51.9	41.9	157.16	-624.8	-1,845.3	484.8	438.2	46.52	10.419		
7,150.0	6,670.2	7,145.4	6,804.8	52.2	42.0	147.37	-607.1	-1,858.7	488.9	442.9	46.01	10.625		
7,200.0	6,715.2	7,190.5	6,843.1	52.5	42.2	138.75	-587.0	-1,871.6	493.2	447.6	45.63	10.809		
7,250.0	6,759.3	7,235.1	6,879.6	52.7	42.3	131.29	-564.7	-1,884.0	497.6	452.2	45.37	10.967		
7,300.0	6,802.3	7,279.2	6,914.4	52.9	42.4	124.90	-540.3	-1,895.7	502.1	456.9	45.23	11.101		
7,350.0	6,844.0	7,322.7	6,947.3	53.2	42.4	119.44	-514.0	-1,906.9	506.6	461.5	45.18	11.214		
7,400.0	6,884.3	7,365.9	6,978.3	53.3	42.5	114.75	-486.0	-1,917.4	511.1	465.9	45.19	11.310		
7,450.0	6,922.8	7,408.6	7,007.4	53.5	42.6	110.73	-456.3	-1,927.3	515.6	470.3	45.25	11.393		
7,500.0	6,959.5	7,450.0	7,034.0	53.7	42.6	107.27	-425.8	-1,936.2	519.9	474.6	45.33	11.468		
7,550.0	6,994.1	7,493.0	7,059.7	53.8	42.6	104.24	-392.5	-1,945.0	524.1	478.6	45.43	11.534		
7,600.0	7,026.5	7,534.8	7,082.9	53.9	42.7	101.64	-358.7	-1,952.8	528.0	482.5	45.53	11.597		
7,650.0	7,056.5	7,576.2	7,104.0	54.0	42.7	99.38	-323.7	-1,960.0	531.8	486.2	45.63	11.656		
7,700.0	7,083.9	7,617.5	7,123.1	54.1	42.7	97.43	-287.7	-1,966.5	535.3	489.6	45.71	11.710		
7,750.0	7,108.7	7,658.5	7,140.0	54.1	42.7	95.76	-250.9	-1,972.2	538.5	492.7	45.79	11.759		
7,800.0	7,130.8	7,700.0	7,155.1	54.2	42.7	94.33	-212.6	-1,977.4	541.4	495.5	45.89	11.798		
7,850.0	7,149.9	7,740.0	7,167.7	54.2	42.7	93.14	-174.9	-1,981.7	543.9	497.9	46.00	11.823		
7,900.0	7,166.0	7,780.5	7,178.4	54.2	42.7	92.16	-136.0	-1,985.3	546.1	499.9	46.16	11.831		
7,950.0	7,179.1	7,820.9	7,186.9	54.2	42.7	91.38	-96.6	-1,988.2	547.8	501.5	46.35	11.819		
8,000.0	7,189.1	7,861.2	7,193.3	54.2	42.6	90.79	-56.9	-1,990.4	549.2	502.6	46.61	11.784		
8,050.0	7,195.8	7,900.0	7,197.5	54.2	42.6	90.38	-18.3	-1,991.9	550.2	503.3	46.93	11.724		
8,100.0	7,199.4	7,941.6	7,199.7	54.2	42.6	90.15	23.2	-1,992.7	550.8	503.4	47.35	11.633		
8,130.3	7,200.0	7,966.9	7,200.0	54.2	42.6	90.10	48.6	-1,992.8	550.9	503.3	47.64	11.565		
8,200.0	7,200.0	8,036.7	7,200.0	54.1	42.6	90.10	118.3	-1,992.9	550.9	502.7	48.20	11.429		
8,300.0	7,200.0	8,136.7	7,200.0	54.1	42.6	90.10	218.3	-1,993.0	550.9	501.7	49.15	11.208		
8,400.0	7,200.0	8,236.7	7,200.0	54.2	42.8	90.10	318.3	-1,993.1	550.9	500.5	50.38	10.935		
8,500.0	7,200.0	8,336.7	7,200.0	54.3	43.0	90.10	418.3	-1,993.2	550.9	499.0	51.86	10.623		
8,600.0	7,200.0	8,436.7	7,200.0	54.5	43.2	90.10	518.3	-1,993.3	550.9	497.3	53.57	10.283		
8,700.0	7,200.0	8,536.7	7,200.0	54.7	43.6	90.10	618.3	-1,993.4	550.9	495.4	55.50	9.925		

CC - Min centre to center distance or convergent point, SF - min separation factor, ES - min ellipse separation

Company:	Synergy Resources	Local Co-ordinate Reference:	Well SRC Evans G-26-23-14CHZ
Project:	SEC.26-T5N-R66W	TVD Reference:	WELL @ 4754.0ft (RKB - 13')
Reference Site:	SRC Evans West Pad Sec.26-T5N-R66W	MD Reference:	WELL @ 4754.0ft (RKB - 13')
Site Error:	0.0ft	North Reference:	True
Reference Well:	SRC Evans G-26-23-14CHZ	Survey Calculation Method:	Minimum Curvature
Well Error:	0.0ft	Output errors are at	2.00 sigma
Reference Wellbore	Wellbore #1	Database:	Landmark
Reference Design:	Plan #1 (10-20-14)	Offset TVD Reference:	Offset Datum

Offset Design		SRC Evans West Pad Sec.26-T5N-R66W - SRC Evans 13-26-23-14CHZ - Wellbore #1 - Plan #1 (10-20										Offset Site Error:		0.0 ft
Survey Program: 0-MWD												Offset Well Error:		0.0 ft
Reference		Offset		Semi Major Axis			Distance							Warning
Measured Depth (ft)	Vertical Depth (ft)	Measured Depth (ft)	Vertical Depth (ft)	Reference (ft)	Offset (ft)	Highside Toolface (°)	Offset Wellbore Centre +N/-S (ft)	+E/-W (ft)	Between Centres (ft)	Between Ellipses (ft)	Minimum Separation (ft)	Separation Factor		
8,800.0	7,200.0	8,636.7	7,200.0	55.0	44.1	90.10	718.3	-1,993.5	550.9	493.3	57.62	9.560		
8,900.0	7,200.0	8,736.7	7,200.0	55.3	44.6	90.10	818.3	-1,993.6	550.9	491.0	59.92	9.194		
9,000.0	7,200.0	8,836.7	7,200.0	55.7	45.2	90.10	918.3	-1,993.7	550.9	488.5	62.36	8.834		
9,100.0	7,200.0	8,936.7	7,200.0	56.2	45.9	90.10	1,018.3	-1,993.8	550.9	486.0	64.94	8.483		
9,200.0	7,200.0	9,036.7	7,200.0	56.7	46.7	90.10	1,118.3	-1,993.9	550.9	483.3	67.64	8.145		
9,300.0	7,200.0	9,136.7	7,200.0	57.3	47.6	90.10	1,218.3	-1,994.0	550.9	480.5	70.44	7.820		
9,400.0	7,200.0	9,236.7	7,200.0	58.0	48.6	90.10	1,318.3	-1,994.1	550.9	477.6	73.34	7.511		
9,500.0	7,200.0	9,336.7	7,200.0	58.7	49.6	90.10	1,418.3	-1,994.2	550.9	474.6	76.33	7.218		
9,600.0	7,200.0	9,436.7	7,200.0	59.5	50.7	90.10	1,518.3	-1,994.3	550.9	471.5	79.38	6.940		
9,700.0	7,200.0	9,536.7	7,200.0	60.4	51.8	90.10	1,618.3	-1,994.4	550.9	468.4	82.50	6.677		
9,800.0	7,200.0	9,636.7	7,200.0	61.3	53.1	90.10	1,718.3	-1,994.6	550.9	465.2	85.68	6.429		
9,900.0	7,200.0	9,736.7	7,200.0	62.3	54.3	90.10	1,818.3	-1,994.7	550.9	462.0	88.92	6.196		
10,000.0	7,200.0	9,836.7	7,200.0	63.3	55.6	90.10	1,918.3	-1,994.8	550.9	458.7	92.20	5.975		
10,100.0	7,200.0	9,936.7	7,200.0	64.4	57.0	90.10	2,018.3	-1,994.9	550.9	455.4	95.52	5.768		
10,200.0	7,200.0	10,036.7	7,200.0	65.5	58.4	90.10	2,118.3	-1,995.0	550.9	452.0	98.88	5.572		
10,300.0	7,200.0	10,136.7	7,200.0	66.7	59.8	90.10	2,218.3	-1,995.1	550.9	448.6	102.27	5.387		
10,400.0	7,200.0	10,236.7	7,200.0	67.9	61.3	90.10	2,318.3	-1,995.2	550.9	445.2	105.69	5.212		
10,500.0	7,200.0	10,336.7	7,200.0	69.1	62.7	90.10	2,418.3	-1,995.3	550.9	441.8	109.14	5.047		
10,600.0	7,200.0	10,436.7	7,200.0	70.4	64.3	90.10	2,518.3	-1,995.4	550.9	438.3	112.62	4.892		
10,700.0	7,200.0	10,536.7	7,200.0	71.8	65.8	90.10	2,618.3	-1,995.5	550.9	434.8	116.12	4.744		
10,800.0	7,200.0	10,636.7	7,200.0	73.1	67.4	90.10	2,718.3	-1,995.6	550.9	431.3	119.64	4.605		
10,900.0	7,200.0	10,736.7	7,200.0	74.5	68.9	90.10	2,818.3	-1,995.7	550.9	427.7	123.18	4.472		
11,000.0	7,200.0	10,836.7	7,200.0	75.9	70.5	90.10	2,918.3	-1,995.8	550.9	424.2	126.74	4.347		
11,100.0	7,200.0	10,936.7	7,200.0	77.4	72.2	90.10	3,018.3	-1,995.9	550.9	420.6	130.31	4.228		
11,200.0	7,200.0	11,036.7	7,200.0	78.8	73.8	90.10	3,118.3	-1,996.0	550.9	417.0	133.90	4.114		
11,300.0	7,200.0	11,136.7	7,200.0	80.3	75.4	90.10	3,218.3	-1,996.1	550.9	413.4	137.50	4.006		
11,400.0	7,200.0	11,236.7	7,200.0	81.8	77.1	90.10	3,318.3	-1,996.2	550.9	409.8	141.12	3.904		
11,500.0	7,200.0	11,336.7	7,200.0	83.4	78.8	90.10	3,418.3	-1,996.3	550.9	406.2	144.74	3.806		
11,600.0	7,200.0	11,436.7	7,200.0	84.9	80.5	90.10	3,518.3	-1,996.4	550.9	402.5	148.38	3.713		
11,700.0	7,200.0	11,536.7	7,200.0	86.5	82.2	90.10	3,618.3	-1,996.5	550.9	398.9	152.03	3.624		
11,800.0	7,200.0	11,636.7	7,200.0	88.1	83.9	90.10	3,718.3	-1,996.6	550.9	395.2	155.68	3.539		
11,900.0	7,200.0	11,736.7	7,200.0	89.7	85.6	90.10	3,818.3	-1,996.8	550.9	391.5	159.35	3.457		
12,000.0	7,200.0	11,836.7	7,200.0	91.3	87.3	90.10	3,918.3	-1,996.9	550.9	387.9	163.02	3.379		
12,100.0	7,200.0	11,936.7	7,200.0	92.9	89.0	90.10	4,018.3	-1,997.0	550.9	384.2	166.70	3.305		
12,200.0	7,200.0	12,036.7	7,200.0	94.5	90.8	90.10	4,118.3	-1,997.1	550.9	380.5	170.39	3.233		
12,300.0	7,200.0	12,136.7	7,200.0	96.2	92.5	90.10	4,218.3	-1,997.2	550.9	376.8	174.09	3.164		
12,400.0	7,200.0	12,236.7	7,200.0	97.9	94.3	90.10	4,318.3	-1,997.3	550.9	373.1	177.79	3.099		
12,500.0	7,200.0	12,336.7	7,200.0	99.5	96.0	90.10	4,418.3	-1,997.4	550.9	369.4	181.50	3.035		
12,600.0	7,200.0	12,436.7	7,200.0	101.2	97.8	90.10	4,518.3	-1,997.5	550.9	365.7	185.21	2.974		
12,700.0	7,200.0	12,536.7	7,200.0	102.9	99.6	90.10	4,618.3	-1,997.6	550.9	362.0	188.93	2.916		
12,800.0	7,200.0	12,636.7	7,200.0	104.6	101.4	90.10	4,718.3	-1,997.7	550.9	358.2	192.65	2.860		
12,900.0	7,200.0	12,736.7	7,200.0	106.3	103.1	90.10	4,818.3	-1,997.8	550.9	354.5	196.37	2.805		
13,000.0	7,200.0	12,836.7	7,200.0	108.0	104.9	90.10	4,918.3	-1,997.9	550.9	350.8	200.11	2.753		
13,100.0	7,200.0	12,936.7	7,200.0	109.7	106.7	90.10	5,018.3	-1,998.0	550.9	347.1	203.84	2.703		
13,200.0	7,200.0	13,036.7	7,200.0	111.5	108.5	90.10	5,118.3	-1,998.1	550.9	343.3	207.58	2.654		
13,300.0	7,200.0	13,136.7	7,200.0	113.2	110.3	90.10	5,218.3	-1,998.2	550.9	339.6	211.32	2.607		
13,400.0	7,200.0	13,236.7	7,200.0	114.9	112.1	90.10	5,318.3	-1,998.3	550.9	335.8	215.07	2.561		
13,500.0	7,200.0	13,336.7	7,200.0	116.7	113.9	90.10	5,418.3	-1,998.4	550.9	332.1	218.82	2.518		
13,600.0	7,200.0	13,436.7	7,200.0	118.4	115.8	90.10	5,518.3	-1,998.5	550.9	328.3	222.57	2.475		
13,700.0	7,200.0	13,536.7	7,200.0	120.2	117.6	90.10	5,618.3	-1,998.6	550.9	324.6	226.33	2.434		
13,800.0	7,200.0	13,636.7	7,200.0	122.0	119.4	90.10	5,718.3	-1,998.7	550.9	320.8	230.09	2.394		
13,900.0	7,200.0	13,736.7	7,200.0	123.7	121.2	90.10	5,818.3	-1,998.8	550.9	317.0	233.85	2.356		

CC - Min centre to center distance or convergent point, SF - min separation factor, ES - min ellipse separation

Company:	Synergy Resources	Local Co-ordinate Reference:	Well SRC Evans G-26-23-14CHZ
Project:	SEC.26-T5N-R66W	TVD Reference:	WELL @ 4754.0ft (RKB - 13')
Reference Site:	SRC Evans West Pad Sec.26-T5N-R66W	MD Reference:	WELL @ 4754.0ft (RKB - 13')
Site Error:	0.0ft	North Reference:	True
Reference Well:	SRC Evans G-26-23-14CHZ	Survey Calculation Method:	Minimum Curvature
Well Error:	0.0ft	Output errors are at	2.00 sigma
Reference Wellbore	Wellbore #1	Database:	Landmark
Reference Design:	Plan #1 (10-20-14)	Offset TVD Reference:	Offset Datum

Offset Design													Offset Site Error:	0.0 ft
Survey Program: 0-MWD													Offset Well Error:	0.0 ft
Reference		Offset		Semi Major Axis			Distance							Warning
Measured Depth (ft)	Vertical Depth (ft)	Measured Depth (ft)	Vertical Depth (ft)	Reference (ft)	Offset (ft)	Highside Toolface (°)	Offset Wellbore Centre +N/-S (ft)	+E/-W (ft)	Between Centres (ft)	Between Ellipses (ft)	Minimum Separation (ft)	Separation Factor		
14,000.0	7,200.0	13,836.7	7,200.0	125.5	123.0	90.10	5,918.3	-1,999.0	550.9	313.3	237.61	2.318		
14,100.0	7,200.0	13,936.7	7,200.0	127.3	124.9	90.10	6,018.3	-1,999.1	550.9	309.5	241.38	2.282		
14,200.0	7,200.0	14,036.7	7,200.0	129.1	126.7	90.10	6,118.3	-1,999.2	550.9	305.7	245.15	2.247		
14,300.0	7,200.0	14,136.7	7,200.0	130.8	128.5	90.10	6,218.3	-1,999.3	550.9	302.0	248.92	2.213		
14,400.0	7,200.0	14,236.7	7,200.0	132.6	130.4	90.10	6,318.3	-1,999.4	550.9	298.2	252.69	2.180		
14,500.0	7,200.0	14,336.7	7,200.0	134.4	132.2	90.10	6,418.3	-1,999.5	550.9	294.4	256.47	2.148		
14,600.0	7,200.0	14,436.7	7,200.0	136.2	134.1	90.10	6,518.3	-1,999.6	550.9	290.6	260.25	2.117		
14,700.0	7,200.0	14,536.7	7,200.0	138.0	135.9	90.10	6,618.3	-1,999.7	550.9	286.9	264.03	2.087		
14,800.0	7,200.0	14,636.7	7,200.0	139.8	137.7	90.10	6,718.3	-1,999.8	550.9	283.1	267.81	2.057		
14,900.0	7,200.0	14,736.7	7,200.0	141.6	139.6	90.10	6,818.3	-1,999.9	550.9	279.3	271.59	2.028		
15,000.0	7,200.0	14,836.7	7,200.0	143.5	141.4	90.10	6,918.3	-2,000.0	550.9	275.5	275.37	2.001		
15,100.0	7,200.0	14,936.7	7,200.0	145.3	143.3	90.10	7,018.3	-2,000.1	550.9	271.7	279.16	1.973		
15,200.0	7,200.0	15,036.7	7,200.0	147.1	145.1	90.10	7,118.3	-2,000.2	550.9	267.9	282.95	1.947		
15,300.0	7,200.0	15,136.7	7,200.0	148.9	147.0	90.10	7,218.3	-2,000.3	550.9	264.2	286.74	1.921		
15,400.0	7,200.0	15,236.7	7,200.0	150.7	148.9	90.10	7,318.3	-2,000.4	550.9	260.4	290.53	1.896		
15,500.0	7,200.0	15,336.7	7,200.0	152.5	150.7	90.10	7,418.3	-2,000.5	550.9	256.6	294.32	1.872		
15,600.0	7,200.0	15,436.7	7,200.0	154.4	152.6	90.10	7,518.3	-2,000.6	550.9	252.8	298.11	1.848		
15,700.0	7,200.0	15,536.7	7,200.0	156.2	154.4	90.10	7,618.3	-2,000.7	550.9	249.0	301.90	1.825		
15,800.0	7,200.0	15,636.7	7,200.0	158.0	156.3	90.10	7,718.3	-2,000.8	550.9	245.2	305.70	1.802		
15,900.0	7,200.0	15,736.7	7,200.0	159.9	158.2	90.10	7,818.3	-2,000.9	550.9	241.4	309.50	1.780		
16,000.0	7,200.0	15,836.7	7,200.0	161.7	160.0	90.10	7,918.3	-2,001.0	550.9	237.6	313.29	1.758		
16,100.0	7,200.0	15,936.7	7,200.0	163.5	161.9	90.10	8,018.3	-2,001.2	550.9	233.8	317.09	1.737		
16,200.0	7,200.0	16,036.7	7,200.0	165.4	163.8	90.10	8,118.3	-2,001.3	550.9	230.0	320.89	1.717		
16,300.0	7,200.0	16,136.7	7,200.0	167.2	165.6	90.10	8,218.3	-2,001.4	550.9	226.2	324.69	1.697		
16,400.0	7,200.0	16,236.7	7,200.0	169.0	167.5	90.10	8,318.3	-2,001.5	550.9	222.4	328.49	1.677		
16,500.0	7,200.0	16,336.7	7,200.0	170.9	169.4	90.10	8,418.3	-2,001.6	550.9	218.6	332.30	1.658		
16,600.0	7,200.0	16,436.7	7,200.0	172.7	171.2	90.10	8,518.3	-2,001.7	550.9	214.8	336.10	1.639		
16,700.0	7,200.0	16,536.7	7,200.0	174.6	173.1	90.10	8,618.3	-2,001.8	550.9	211.0	339.90	1.621		
16,800.0	7,200.0	16,636.7	7,200.0	176.4	175.0	90.10	8,718.3	-2,001.9	550.9	207.2	343.71	1.603		
16,900.0	7,200.0	16,736.7	7,200.0	178.3	176.9	90.10	8,818.3	-2,002.0	550.9	203.4	347.51	1.585		
17,000.0	7,200.0	16,836.7	7,200.0	180.1	178.7	90.10	8,918.3	-2,002.1	550.9	199.6	351.32	1.568		
17,100.0	7,200.0	16,936.7	7,200.0	182.0	180.6	90.10	9,018.3	-2,002.2	550.9	195.8	355.13	1.551		
17,200.0	7,200.0	17,036.7	7,200.0	183.8	182.5	90.10	9,118.3	-2,002.3	550.9	192.0	358.94	1.535		
17,300.0	7,200.0	17,136.7	7,200.0	185.7	184.4	90.10	9,218.3	-2,002.4	550.9	188.2	362.75	1.519		
17,400.0	7,200.0	17,236.7	7,200.0	187.6	186.3	90.10	9,318.3	-2,002.5	550.9	184.3	366.56	1.503		
17,451.5	7,200.0	17,288.1	7,200.0	188.5	187.2	90.10	9,369.7	-2,002.6	550.9	182.4	368.52	1.495 Level 3		
17,486.1	7,200.0	17,317.3	7,200.0	189.2	187.8	90.10	9,399.0	-2,002.6	550.9	181.2	369.73	1.490 Level 3, SF		

SRC Evans West Pad Sec.26-T5N-R66W - SRC Evans 13-26-23-14NHZ - Wellbore #1 - Plan #1 (10-20)													Offset Site Error:	0.0 ft
Survey Program: 0-MWD													Offset Well Error:	0.0 ft
Reference		Offset		Semi Major Axis			Distance							
Measured Depth Depth (ft)	Vertical Depth (ft)	Measured Depth Depth (ft)	Vertical Depth (ft)	Reference (ft)	Offset (ft)	Highside Toolface (°)	Offset Wellbore Centre +N/-S (ft)	+E/-W (ft)	Between Centres (ft)	Between Ellipses (ft)	Minimum Separation (ft)	Separation Factor	Warning	
0.0	0.0	0.0	0.0	0.0	0.0	180.00	-22.6	0.0	22.6					
100.0	100.0	100.0	100.0	0.1	0.1	180.00	-22.6	0.0	22.6	22.4	0.22	100.492		
200.0	200.0	200.0	200.0	0.3	0.3	180.00	-22.6	0.0	22.6	21.9	0.67	33.497		
300.0	300.0	300.0	300.0	0.6	0.6	180.00	-22.6	0.0	22.6	21.5	1.12	20.098		
400.0	400.0	400.0	400.0	0.8	0.8	180.00	-22.6	0.0	22.6	21.0	1.57	14.356		
500.0	500.0	500.0	500.0	1.0	1.0	-77.85	-22.6	0.0	22.2	20.1	2.01	11.037		
591.6	591.5	591.5	591.5	1.2	1.2	-89.99	-22.6	0.0	21.7	19.3	2.40	9.009 CC		
600.0	599.8	599.8	599.8	1.2	1.2	-91.50	-22.6	0.0	21.7	19.2	2.44	8.879 ES		
700.0	699.5	699.7	699.7	1.4	1.4	-109.14	-23.1	-1.6	23.0	20.1	2.88	7.982		
800.0	798.7	799.8	799.7	1.7	1.6	-123.57	-24.7	-6.6	26.2	22.9	3.33	7.888		
900.0	897.5	900.2	899.7	2.0	1.9	-134.17	-27.5	-14.9	30.8	27.0	3.79	8.126		
1,000.0	995.6	1,000.8	999.5	2.4	2.1	-141.70	-31.3	-26.6	36.2	32.0	4.28	8.467		
1,100.0	1,093.1	1,101.7	1,099.1	2.8	2.4	-147.08	-36.2	-41.7	42.1	37.4	4.79	8.806		
1,200.0	1,189.6	1,202.8	1,198.3	3.3	2.8	-151.00	-42.2	-60.1	48.3	43.0	5.32	9.096		
1,300.0	1,285.3	1,304.1	1,297.1	3.9	3.2	-153.90	-49.3	-81.9	54.7	48.9	5.87	9.321		
1,400.0	1,379.8	1,405.7	1,395.2	4.5	3.7	-156.09	-57.5	-107.0	61.2	54.7	6.46	9.479		
1,500.0	1,473.2	1,507.6	1,492.5	5.2	4.2	-157.77	-66.8	-135.5	67.7	60.7	7.08	9.571		
1,555.5	1,524.4	1,564.2	1,546.1	5.6	4.6	-158.52	-72.4	-152.8	71.4	63.9	7.44	9.591		
1,600.0	1,565.4	1,609.7	1,588.9	6.0	4.9	-158.98	-77.2	-167.4	74.0	66.2	7.76	9.535		
1,700.0	1,657.3	1,712.2	1,684.4	6.8	5.6	-159.18	-88.7	-202.7	77.4	68.9	8.54	9.065		
1,800.0	1,749.3	1,812.8	1,777.3	7.6	6.3	-158.66	-100.7	-239.5	78.5	69.1	9.40	8.350		
1,900.0	1,841.3	1,912.8	1,869.5	8.4	7.1	-158.12	-112.7	-276.3	79.6	69.3	10.30	7.722		
2,000.0	1,933.3	2,012.8	1,961.7	9.2	7.9	-157.60	-124.7	-313.0	80.6	69.4	11.23	7.178		
2,100.0	2,025.2	2,112.7	2,054.0	10.1	8.7	-157.10	-136.6	-349.7	81.6	69.4	12.18	6.703		
2,200.0	2,117.2	2,212.7	2,146.2	10.9	9.5	-156.60	-148.6	-386.4	82.7	69.5	13.15	6.286		
2,300.0	2,209.2	2,312.7	2,238.4	11.7	10.3	-156.12	-160.6	-423.2	83.7	69.6	14.14	5.919		
2,400.0	2,301.2	2,412.7	2,330.6	12.6	11.1	-155.65	-172.6	-459.9	84.8	69.6	15.16	5.593		
2,500.0	2,393.1	2,512.7	2,422.9	13.4	11.9	-155.20	-184.5	-496.6	85.8	69.6	16.19	5.302		
2,600.0	2,485.1	2,612.7	2,515.1	14.2	12.7	-154.75	-196.5	-533.4	86.9	69.7	17.24	5.042		
2,700.0	2,577.1	2,712.7	2,607.3	15.1	13.5	-154.31	-208.5	-570.1	88.0	69.7	18.30	4.807		
2,800.0	2,669.1	2,812.7	2,699.6	15.9	14.3	-153.89	-220.5	-606.8	89.1	69.7	19.38	4.595		
2,900.0	2,761.0	2,912.7	2,791.8	16.7	15.2	-153.47	-232.5	-643.5	90.1	69.7	20.47	4.403		
3,000.0	2,853.0	3,012.7	2,884.0	17.6	16.0	-153.07	-244.4	-680.3	91.2	69.6	21.58	4.227		
3,100.0	2,945.0	3,112.7	2,976.2	18.4	16.8	-152.67	-256.4	-717.0	92.3	69.6	22.70	4.067		
3,200.0	3,037.0	3,212.7	3,068.5	19.3	17.6	-152.29	-268.4	-753.7	93.4	69.6	23.83	3.920		
3,300.0	3,128.9	3,312.7	3,160.7	20.1	18.5	-151.91	-280.4	-790.4	94.5	69.5	24.97	3.785		
3,400.0	3,220.9	3,412.6	3,252.9	21.0	19.3	-151.54	-292.3	-827.2	95.6	69.5	26.12	3.660		
3,500.0	3,312.9	3,512.6	3,345.2	21.8	20.1	-151.18	-304.3	-863.9	96.7	69.4	27.29	3.544		
3,600.0	3,404.9	3,612.6	3,437.4	22.6	20.9	-150.83	-316.3	-900.6	97.8	69.4	28.46	3.437		
3,700.0	3,496.8	3,712.6	3,529.6	23.5	21.8	-150.49	-328.3	-937.4	98.9	69.3	29.65	3.338		
3,800.0	3,588.8	3,812.6	3,621.8	24.3	22.6	-150.15	-340.3	-974.1	100.1	69.2	30.84	3.245		
3,900.0	3,680.8	3,912.6	3,714.1	25.2	23.4	-149.82	-352.2	-1,010.8	101.2	69.1	32.04	3.158		
4,000.0	3,772.8	4,012.6	3,806.3	26.0	24.2	-149.50	-364.2	-1,047.5	102.3	69.1	33.25	3.077		
4,100.0	3,864.7	4,112.6	3,898.5	26.9	25.1	-149.18	-376.2	-1,084.3	103.4	69.0	34.47	3.001		
4,200.0	3,956.7	4,212.6	3,990.8	27.7	25.9	-148.88	-388.2	-1,121.0	104.6	68.9	35.70	2.930		
4,300.0	4,048.7	4,312.6	4,083.0	28.6	26.7	-148.58	-400.1	-1,157.7	105.7	68.8	36.93	2.862		
4,400.0	4,140.7	4,412.6	4,175.2	29.4	27.6	-148.28	-412.1	-1,194.4	106.8	68.7	38.17	2.799		
4,500.0	4,232.6	4,512.6	4,267.4	30.2	28.4	-147.99	-424.1	-1,231.2	108.0	68.6	39.42	2.739		
4,600.0	4,324.6	4,612.5	4,359.7	31.1	29.2	-147.71	-436.1	-1,267.9	109.1	68.5	40.67	2.683		
4,700.0	4,416.6	4,712.5	4,451.9	31.9	30.0	-147.43	-448.0	-1,304.6	110.3	68.3	41.94	2.630		
4,800.0	4,508.6	4,812.5	4,544.1	32.8	30.9	-147.16	-460.0	-1,341.3	111.4	68.2	43.20	2.579		
4,900.0	4,600.5	4,912.5	4,636.4	33.6	31.7	-146.90	-472.0	-1,378.1	112.6	68.1	44.48	2.531		

COMPASS 2003.21 Build 46

Company:	Synergy Resources	Local Co-ordinate Reference:	Well SRC Evans G-26-23-14CHZ
Project:	SEC.26-T5N-R66W	TVD Reference:	WELL @ 4754.0ft (RKB - 13')
Reference Site:	SRC Evans West Pad Sec.26-T5N-R66W	MD Reference:	WELL @ 4754.0ft (RKB - 13')
Site Error:	0.0ft	North Reference:	True
Reference Well:	SRC Evans G-26-23-14CHZ	Survey Calculation Method:	Minimum Curvature
Well Error:	0.0ft	Output errors are at	2.00 sigma
Reference Wellbore	Wellbore #1	Database:	Landmark
Reference Design:	Plan #1 (10-20-14)	Offset TVD Reference:	Offset Datum

Offset Design													Offset Site Error:	0.0 ft
Survey Program: 0-MWD													Offset Well Error:	0.0 ft
Reference		Offset		Semi Major Axis			Distance							Warning
Measured Depth (ft)	Vertical Depth (ft)	Measured Depth (ft)	Vertical Depth (ft)	Reference (ft)	Offset (ft)	Highside Toolface (°)	Offset Wellbore Centre +N/-S (ft)	+E/-W (ft)	Between Centres (ft)	Between Ellipses (ft)	Minimum Separation (ft)	Separation Factor		
5,000.0	4,692.5	5,012.5	4,728.6	34.5	32.5	-146.64	-484.0	-1,414.8	113.7	68.0	45.76	2.485		
5,100.0	4,784.5	5,112.5	4,820.8	35.3	33.4	-146.38	-496.0	-1,451.5	114.9	67.8	47.04	2.442		
5,200.0	4,876.5	5,212.5	4,913.0	36.2	34.2	-146.13	-507.9	-1,488.3	116.0	67.7	48.33	2.401		
5,300.0	4,968.4	5,312.5	5,005.3	37.0	35.0	-145.89	-519.9	-1,525.0	117.2	67.6	49.62	2.362		
5,400.0	5,060.4	5,412.5	5,097.5	37.8	35.8	-145.65	-531.9	-1,561.7	118.4	67.4	50.93	2.324		
5,500.0	5,152.4	5,512.5	5,189.7	38.7	36.7	-145.41	-543.9	-1,598.4	119.5	67.3	52.23	2.288		
5,600.0	5,244.4	5,612.5	5,282.0	39.5	37.5	-145.18	-555.8	-1,635.2	120.7	67.1	53.54	2.254		
5,700.0	5,336.3	5,712.5	5,374.2	40.4	38.3	-144.95	-567.8	-1,671.9	121.8	67.0	54.85	2.221		
5,800.0	5,428.3	5,812.5	5,466.4	41.2	39.2	-144.73	-579.8	-1,708.6	123.0	66.8	56.17	2.190		
5,900.0	5,520.3	5,912.4	5,558.6	42.1	40.0	-144.51	-591.8	-1,745.3	124.2	66.7	57.49	2.160		
6,000.0	5,612.3	6,012.4	5,650.9	42.9	40.8	-144.30	-603.8	-1,782.1	125.4	66.5	58.82	2.131		
6,100.0	5,704.2	6,112.4	5,743.1	43.8	41.7	-144.09	-615.7	-1,818.8	126.5	66.4	60.15	2.104		
6,200.0	5,796.2	6,212.4	5,835.3	44.6	42.5	-143.88	-627.7	-1,855.5	127.7	66.2	61.49	2.077		
6,300.0	5,888.2	6,312.4	5,927.6	45.5	43.3	-143.68	-639.7	-1,892.3	128.9	66.1	62.82	2.052		
6,400.0	5,980.2	6,412.4	6,019.8	46.3	44.1	-143.48	-651.7	-1,929.0	130.1	65.9	64.17	2.027		
6,500.0	6,072.1	6,512.4	6,112.0	47.2	45.0	-143.29	-663.6	-1,965.7	131.2	65.7	65.51	2.003		
6,600.0	6,164.1	6,618.2	6,210.0	48.0	45.7	-145.47	-670.5	-2,004.7	130.5	65.9	64.62	2.020		
6,700.0	6,256.1	6,721.3	6,305.4	48.8	46.3	-154.03	-662.3	-2,042.8	126.4	68.7	57.65	2.192		
6,768.8	6,319.4	6,788.2	6,366.3	49.4	46.7	-163.33	-649.1	-2,067.0	124.7	74.4	50.32	2.478		
6,800.0	6,348.1	6,817.1	6,392.2	49.7	46.8	-168.20	-641.6	-2,077.3	125.2	78.0	47.21	2.652		
6,900.0	6,440.0	6,903.2	6,467.4	50.5	47.2	-175.33	-612.4	-2,107.3	136.3	92.0	44.28	3.079		
6,925.6	6,463.6	6,923.6	6,484.7	50.8	47.3	171.30	-604.1	-2,114.2	142.0	96.3	45.75	3.105		
6,950.0	6,486.1	6,942.6	6,500.6	50.9	47.4	162.75	-595.9	-2,120.6	148.4	100.4	47.99	3.093		
7,000.0	6,532.3	6,980.9	6,532.1	51.3	47.5	145.74	-577.9	-2,133.1	163.5	109.9	53.56	3.053		
7,050.0	6,578.5	7,018.4	6,561.9	51.6	47.6	129.87	-558.6	-2,145.0	180.3	121.3	58.99	3.057		
7,100.0	6,624.6	7,055.2	6,590.3	51.9	47.7	115.57	-538.1	-2,156.4	198.2	134.7	63.48	3.122		
7,150.0	6,670.2	7,091.4	6,617.2	52.2	47.8	103.08	-516.4	-2,167.1	216.5	149.7	66.80	3.240		
7,200.0	6,715.2	7,127.0	6,642.6	52.5	47.9	92.41	-493.6	-2,177.3	234.9	165.9	68.99	3.404		
7,250.0	6,759.3	7,162.2	6,666.7	52.7	48.0	83.44	-469.8	-2,186.9	253.0	182.9	70.13	3.608		
7,300.0	6,802.3	7,200.0	6,691.3	52.9	48.1	75.81	-442.9	-2,196.7	270.8	200.3	70.48	3.842		
7,350.0	6,844.0	7,231.2	6,710.6	53.2	48.1	69.69	-419.6	-2,204.4	288.0	218.2	69.76	4.128		
7,400.0	6,884.3	7,265.2	6,730.5	53.3	48.2	64.46	-393.3	-2,212.4	304.4	236.0	68.46	4.447		
7,450.0	6,922.8	7,300.0	6,749.7	53.5	48.2	60.04	-365.3	-2,220.1	320.1	253.6	66.56	4.810		
7,500.0	6,959.5	7,332.2	6,766.3	53.7	48.2	56.37	-338.5	-2,226.7	334.9	270.9	64.05	5.229		
7,550.0	6,994.1	7,365.3	6,782.2	53.8	48.3	53.25	-310.1	-2,233.1	348.8	287.8	61.08	5.711		
7,600.0	7,026.5	7,400.0	6,797.5	53.9	48.3	50.58	-279.6	-2,239.2	361.7	304.0	57.72	6.267		
7,650.0	7,056.5	7,431.0	6,810.0	54.0	48.3	48.38	-251.8	-2,244.2	373.6	319.7	53.95	6.925		
7,700.0	7,083.9	7,463.5	6,821.9	54.1	48.3	46.49	-221.9	-2,249.0	384.4	334.5	49.92	7.701		
7,750.0	7,108.7	7,500.0	6,833.8	54.1	48.3	44.86	-187.7	-2,253.7	394.1	348.4	45.70	8.624		
7,800.0	7,130.8	7,528.1	6,841.8	54.2	48.3	43.57	-160.9	-2,256.9	402.7	361.4	41.28	9.754		
7,850.0	7,149.9	7,560.3	6,849.8	54.2	48.3	42.48	-129.9	-2,260.2	410.1	373.2	36.88	11.119		
7,900.0	7,166.0	7,600.0	6,857.8	54.2	48.3	41.56	-91.2	-2,263.4	416.5	383.8	32.67	12.749		
7,950.0	7,179.1	7,624.3	6,861.7	54.2	48.3	40.91	-67.2	-2,265.0	421.4	392.8	28.69	14.691		
8,000.0	7,189.1	7,650.0	6,865.0	54.2	48.3	40.41	-41.8	-2,266.3	425.4	400.0	25.35	16.779		
8,050.0	7,195.8	7,688.1	6,868.4	54.2	48.3	40.05	-3.9	-2,267.7	428.0	404.8	23.15	18.490		
8,100.0	7,199.4	7,720.0	6,869.8	54.2	48.3	39.87	28.0	-2,268.3	429.5	407.1	22.33	19.231		
8,130.3	7,200.0	7,740.3	6,870.0	54.2	48.3	39.84	48.3	-2,268.4	429.8	407.1	22.63	18.988		
8,200.0	7,200.0	7,810.0	6,870.0	54.1	48.3	39.84	118.0	-2,268.5	429.8	406.8	22.99	18.693		
8,300.0	7,200.0	7,910.0	6,870.0	54.1	48.3	39.84	218.0	-2,268.6	429.8	406.1	23.66	18.164		
8,400.0	7,200.0	8,010.0	6,870.0	54.2	48.4	39.84	318.0	-2,268.7	429.8	405.1	24.61	17.461		
8,500.0	7,200.0	8,110.0	6,870.0	54.3	48.5	39.84	418.0	-2,268.8	429.8	403.9	25.81	16.648		
8,600.0	7,200.0	8,210.0	6,870.0	54.5	48.7	39.84	518.0	-2,268.9	429.8	402.5	27.23	15.781		

CC - Min centre to center distance or convergent point, SF - min separation factor, ES - min ellipse separation

Company:	Synergy Resources	Local Co-ordinate Reference:	Well SRC Evans G-26-23-14CHZ
Project:	SEC.26-T5N-R66W	TVD Reference:	WELL @ 4754.0ft (RKB - 13')
Reference Site:	SRC Evans West Pad Sec.26-T5N-R66W	MD Reference:	WELL @ 4754.0ft (RKB - 13')
Site Error:	0.0ft	North Reference:	True
Reference Well:	SRC Evans G-26-23-14CHZ	Survey Calculation Method:	Minimum Curvature
Well Error:	0.0ft	Output errors are at	2.00 sigma
Reference Wellbore	Wellbore #1	Database:	Landmark
Reference Design:	Plan #1 (10-20-14)	Offset TVD Reference:	Offset Datum

Offset Design		SRC Evans West Pad Sec.26-T5N-R66W - SRC Evans 13-26-23-14NHZ - Wellbore #1 - Plan #1 (10-20										Offset Site Error:		0.0 ft
Survey Program: 0-MWD												Offset Well Error:		0.0 ft
Reference		Offset		Semi Major Axis			Distance							Warning
Measured Depth (ft)	Vertical Depth (ft)	Measured Depth (ft)	Vertical Depth (ft)	Reference (ft)	Offset (ft)	Highside Toolface (°)	Offset Wellbore Centre +N/-S (ft)	+E/-W (ft)	Between Centres (ft)	Between Ellipses (ft)	Minimum Separation (ft)	Separation Factor		
8,700.0	7,200.0	8,310.0	6,870.0	54.7	49.0	39.84	618.0	-2,269.0	429.8	400.9	28.84	14.904		
8,784.7	7,200.0	8,394.7	6,870.0	54.9	49.3	39.84	702.7	-2,269.1	429.8	399.4	30.32	14.173		
8,800.0	7,200.0	8,410.0	6,870.0	55.0	49.4	39.84	718.0	-2,269.1	429.8	399.2	30.60	14.047		
8,900.0	7,200.0	8,510.0	6,870.0	55.3	49.8	39.84	818.0	-2,269.2	429.8	397.3	32.49	13.229		
9,000.0	7,200.0	8,610.0	6,870.0	55.7	50.3	39.84	918.0	-2,269.3	429.8	395.3	34.48	12.462		
9,100.0	7,200.0	8,710.0	6,870.0	56.2	50.9	39.84	1,018.0	-2,269.4	429.8	393.2	36.58	11.750		
9,200.0	7,200.0	8,810.0	6,870.0	56.7	51.5	39.84	1,118.0	-2,269.5	429.8	391.0	38.74	11.093		
9,300.0	7,200.0	8,910.0	6,870.0	57.3	52.3	39.84	1,218.0	-2,269.6	429.8	388.8	40.97	10.488		
9,400.0	7,200.0	9,010.0	6,870.0	58.0	53.0	39.84	1,318.0	-2,269.7	429.8	386.5	43.26	9.934		
9,500.0	7,200.0	9,110.0	6,870.0	58.7	53.9	39.84	1,418.0	-2,269.8	429.8	384.2	45.59	9.426		
9,600.0	7,200.0	9,210.0	6,870.0	59.5	54.8	39.84	1,518.0	-2,269.9	429.8	381.8	47.96	8.960		
9,700.0	7,200.0	9,310.0	6,870.0	60.4	55.8	39.84	1,618.0	-2,270.0	429.8	379.4	50.37	8.532		
9,800.0	7,200.0	9,410.0	6,870.0	61.3	56.9	39.84	1,718.0	-2,270.2	429.8	376.9	52.81	8.138		
9,900.0	7,200.0	9,510.0	6,870.0	62.3	58.0	39.84	1,818.0	-2,270.3	429.8	374.5	55.27	7.776		
10,000.0	7,200.0	9,610.0	6,870.0	63.3	59.2	39.84	1,918.0	-2,270.4	429.8	372.0	57.75	7.442		
10,100.0	7,200.0	9,710.0	6,870.0	64.4	60.4	39.84	2,018.0	-2,270.5	429.8	369.5	60.25	7.133		
10,200.0	7,200.0	9,810.0	6,870.0	65.5	61.6	39.84	2,118.0	-2,270.6	429.8	367.0	62.77	6.846		
10,300.0	7,200.0	9,910.0	6,870.0	66.7	62.9	39.84	2,218.0	-2,270.7	429.8	364.4	65.30	6.581		
10,400.0	7,200.0	10,010.0	6,870.0	67.9	64.3	39.84	2,318.0	-2,270.8	429.8	361.9	67.85	6.334		
10,500.0	7,200.0	10,110.0	6,870.0	69.1	65.6	39.84	2,418.0	-2,270.9	429.8	359.3	70.41	6.103		
10,600.0	7,200.0	10,210.0	6,870.0	70.4	67.0	39.84	2,518.0	-2,271.0	429.8	356.8	72.98	5.888		
10,700.0	7,200.0	10,310.0	6,870.0	71.8	68.5	39.84	2,618.0	-2,271.1	429.8	354.2	75.56	5.687		
10,800.0	7,200.0	10,410.0	6,870.0	73.1	69.9	39.84	2,718.0	-2,271.2	429.8	351.6	78.15	5.499		
10,900.0	7,200.0	10,510.0	6,870.0	74.5	71.4	39.84	2,818.0	-2,271.3	429.8	349.0	80.75	5.322		
11,000.0	7,200.0	10,610.0	6,870.0	75.9	72.9	39.84	2,918.0	-2,271.4	429.8	346.4	83.35	5.156		
11,100.0	7,200.0	10,710.0	6,870.0	77.4	74.5	39.84	3,018.0	-2,271.5	429.8	343.8	85.96	4.999		
11,200.0	7,200.0	10,810.0	6,870.0	78.8	76.0	39.84	3,118.0	-2,271.6	429.8	341.2	88.58	4.852		
11,300.0	7,200.0	10,910.0	6,870.0	80.3	77.6	39.84	3,218.0	-2,271.7	429.8	338.6	91.20	4.712		
11,400.0	7,200.0	11,010.0	6,870.0	81.8	79.2	39.84	3,318.0	-2,271.8	429.8	335.9	93.83	4.580		
11,500.0	7,200.0	11,110.0	6,870.0	83.4	80.8	39.84	3,418.0	-2,271.9	429.8	333.3	96.46	4.455		
11,600.0	7,200.0	11,210.0	6,870.0	84.9	82.4	39.84	3,518.0	-2,272.0	429.8	330.7	99.09	4.337		
11,700.0	7,200.0	11,310.0	6,870.0	86.5	84.1	39.84	3,618.0	-2,272.1	429.8	328.0	101.73	4.224		
11,784.5	7,200.0	11,394.5	6,870.0	87.8	85.5	39.84	3,702.5	-2,272.2	429.8	325.8	103.96	4.134		
11,800.0	7,200.0	11,410.0	6,870.0	88.1	85.7	39.84	3,718.0	-2,272.2	429.8	325.4	104.37	4.117		
11,900.0	7,200.0	11,510.0	6,870.0	89.7	87.4	39.84	3,818.0	-2,272.4	429.8	322.7	107.02	4.016		
12,000.0	7,200.0	11,610.0	6,870.0	91.3	89.1	39.84	3,918.0	-2,272.5	429.8	320.1	109.67	3.919		
12,100.0	7,200.0	11,710.0	6,870.0	92.9	90.7	39.84	4,018.0	-2,272.6	429.8	317.4	112.32	3.826		
12,200.0	7,200.0	11,810.0	6,870.0	94.5	92.4	39.84	4,118.0	-2,272.7	429.8	314.8	114.97	3.738		
12,300.0	7,200.0	11,910.0	6,870.0	96.2	94.1	39.84	4,218.0	-2,272.8	429.8	312.1	117.63	3.653		
12,400.0	7,200.0	12,010.0	6,870.0	97.9	95.8	39.84	4,318.0	-2,272.9	429.8	309.5	120.29	3.573		
12,500.0	7,200.0	12,110.0	6,870.0	99.5	97.6	39.84	4,418.0	-2,273.0	429.8	306.8	122.95	3.495		
12,600.0	7,200.0	12,210.0	6,870.0	101.2	99.3	39.84	4,518.0	-2,273.1	429.8	304.1	125.61	3.421		
12,700.0	7,200.0	12,310.0	6,870.0	102.9	101.0	39.84	4,618.0	-2,273.2	429.8	301.5	128.28	3.350		
12,800.0	7,200.0	12,410.0	6,870.0	104.6	102.8	39.84	4,718.0	-2,273.3	429.8	298.8	130.95	3.282		
12,900.0	7,200.0	12,510.0	6,870.0	106.3	104.5	39.84	4,818.0	-2,273.4	429.8	296.1	133.62	3.216		
13,000.0	7,200.0	12,610.0	6,870.0	108.0	106.3	39.84	4,918.0	-2,273.5	429.8	293.5	136.29	3.153		
13,100.0	7,200.0	12,710.0	6,870.0	109.7	108.0	39.84	5,018.0	-2,273.6	429.8	290.8	138.96	3.093		
13,200.0	7,200.0	12,810.0	6,870.0	111.5	109.8	39.84	5,118.0	-2,273.7	429.8	288.1	141.63	3.034		
13,264.8	7,200.0	12,874.8	6,870.0	112.6	110.9	39.84	5,182.8	-2,273.8	429.8	286.4	143.36	2.998		
13,300.0	7,200.0	12,910.0	6,870.0	113.2	111.6	39.84	5,218.0	-2,273.8	429.8	285.4	144.30	2.978		
13,400.0	7,200.0	13,010.0	6,870.0	114.9	113.3	39.84	5,318.0	-2,273.9	429.8	282.8	146.98	2.924		
13,500.0	7,200.0	13,110.0	6,870.0	116.7	115.1	39.84	5,418.0	-2,274.0	429.8	280.1	149.66	2.872		

CC - Min centre to center distance or convergent point, SF - min separation factor, ES - min ellipse separation

Company:	Synergy Resources	Local Co-ordinate Reference:	Well SRC Evans G-26-23-14CHZ
Project:	SEC.26-T5N-R66W	TVD Reference:	WELL @ 4754.0ft (RKB - 13')
Reference Site:	SRC Evans West Pad Sec.26-T5N-R66W	MD Reference:	WELL @ 4754.0ft (RKB - 13')
Site Error:	0.0ft	North Reference:	True
Reference Well:	SRC Evans G-26-23-14CHZ	Survey Calculation Method:	Minimum Curvature
Well Error:	0.0ft	Output errors are at	2.00 sigma
Reference Wellbore	Wellbore #1	Database:	Landmark
Reference Design:	Plan #1 (10-20-14)	Offset TVD Reference:	Offset Datum

Offset Design												Offset Site Error:	0.0 ft
Survey Program: 0-MWD												Offset Well Error:	0.0 ft
Reference		Offset		Semi Major Axis			Distance						Warning
Measured Depth (ft)	Vertical Depth (ft)	Measured Depth (ft)	Vertical Depth (ft)	Reference (ft)	Offset (ft)	Highside Toolface (°)	Offset Wellbore Centre +N/-S (ft)	+E/-W (ft)	Between Centres (ft)	Between Ellipses (ft)	Minimum Separation (ft)	Separation Factor	
13,600.0	7,200.0	13,210.0	6,870.0	118.4	116.9	39.84	5,518.0	-2,274.1	429.8	277.4	152.33	2.821	
13,700.0	7,200.0	13,310.0	6,870.0	120.2	118.7	39.84	5,618.0	-2,274.2	429.8	274.7	155.01	2.772	
13,800.0	7,200.0	13,410.0	6,870.0	122.0	120.5	39.84	5,718.0	-2,274.3	429.8	272.1	157.69	2.725	
13,900.0	7,200.0	13,510.0	6,870.0	123.7	122.3	39.84	5,818.0	-2,274.4	429.8	269.4	160.37	2.680	
14,000.0	7,200.0	13,610.0	6,870.0	125.5	124.1	39.84	5,918.0	-2,274.5	429.8	266.7	163.06	2.636	
14,100.0	7,200.0	13,710.0	6,870.0	127.3	125.9	39.84	6,018.0	-2,274.7	429.8	264.0	165.74	2.593	
14,200.0	7,200.0	13,810.0	6,870.0	129.1	127.7	39.84	6,118.0	-2,274.8	429.8	261.3	168.42	2.552	
14,300.0	7,200.0	13,910.0	6,870.0	130.8	129.5	39.84	6,218.0	-2,274.9	429.8	258.6	171.11	2.512	
14,400.0	7,200.0	14,010.0	6,870.0	132.6	131.3	39.84	6,318.0	-2,275.0	429.8	256.0	173.79	2.473	
14,500.0	7,200.0	14,110.0	6,870.0	134.4	133.2	39.84	6,418.0	-2,275.1	429.8	253.3	176.48	2.435	
14,600.0	7,200.0	14,210.0	6,870.0	136.2	135.0	39.84	6,518.0	-2,275.2	429.8	250.6	179.16	2.399	
14,700.0	7,200.0	14,310.0	6,870.0	138.0	136.8	39.84	6,618.0	-2,275.3	429.8	247.9	181.85	2.363	
14,800.0	7,200.0	14,410.0	6,870.0	139.8	138.6	39.84	6,718.0	-2,275.4	429.8	245.2	184.54	2.329	
14,900.0	7,200.0	14,510.0	6,870.0	141.6	140.5	39.84	6,818.0	-2,275.5	429.8	242.5	187.23	2.295	
15,000.0	7,200.0	14,610.0	6,870.0	143.5	142.3	39.84	6,918.0	-2,275.6	429.8	239.8	189.91	2.263	
15,100.0	7,200.0	14,710.0	6,870.0	145.3	144.1	39.84	7,018.0	-2,275.7	429.8	237.2	192.60	2.231	
15,200.0	7,200.0	14,810.0	6,870.0	147.1	146.0	39.84	7,118.0	-2,275.8	429.8	234.5	195.29	2.201	
15,300.0	7,200.0	14,910.0	6,870.0	148.9	147.8	39.84	7,218.0	-2,275.9	429.8	231.8	197.98	2.171	
15,400.0	7,200.0	15,010.0	6,870.0	150.7	149.6	39.84	7,318.0	-2,276.0	429.8	229.1	200.67	2.142	
15,500.0	7,200.0	15,110.0	6,870.0	152.5	151.5	39.84	7,418.0	-2,276.1	429.8	226.4	203.37	2.113	
15,600.0	7,200.0	15,210.0	6,870.0	154.4	153.3	39.84	7,518.0	-2,276.2	429.8	223.7	206.06	2.086	
15,700.0	7,200.0	15,310.0	6,870.0	156.2	155.2	39.84	7,618.0	-2,276.3	429.8	221.0	208.75	2.059	
15,800.0	7,200.0	15,410.0	6,870.0	158.0	157.0	39.84	7,718.0	-2,276.4	429.8	218.3	211.44	2.032	
15,900.0	7,200.0	15,510.0	6,870.0	159.9	158.9	39.84	7,818.0	-2,276.5	429.8	215.6	214.14	2.007	
16,000.0	7,200.0	15,610.0	6,870.0	161.7	160.7	39.84	7,918.0	-2,276.6	429.8	212.9	216.83	1.982	
16,100.0	7,200.0	15,710.0	6,870.0	163.5	162.6	39.84	8,018.0	-2,276.7	429.8	210.2	219.52	1.958	
16,200.0	7,200.0	15,810.0	6,870.0	165.4	164.4	39.84	8,118.0	-2,276.9	429.8	207.5	222.22	1.934	
16,300.0	7,200.0	15,910.0	6,870.0	167.2	166.3	39.84	8,218.0	-2,277.0	429.8	204.8	224.91	1.911	
16,379.7	7,200.0	15,989.7	6,870.0	168.7	167.8	39.84	8,297.7	-2,277.0	429.8	202.7	227.06	1.893	
16,400.0	7,200.0	16,010.0	6,870.0	169.0	168.1	39.84	8,318.0	-2,277.1	429.8	202.1	227.61	1.888	
16,500.0	7,200.0	16,110.0	6,870.0	170.9	170.0	39.84	8,418.0	-2,277.2	429.8	199.5	230.30	1.866	
16,600.0	7,200.0	16,210.0	6,870.0	172.7	171.9	39.84	8,518.0	-2,277.3	429.8	196.8	233.00	1.844	
16,700.0	7,200.0	16,310.0	6,870.0	174.6	173.7	39.84	8,618.0	-2,277.4	429.8	194.1	235.69	1.823	
16,742.9	7,200.0	16,352.9	6,870.0	175.4	174.5	39.84	8,660.9	-2,277.4	429.8	192.9	236.85	1.814	
16,800.0	7,200.0	16,410.0	6,870.0	176.4	175.6	39.84	8,718.0	-2,277.5	429.8	191.4	238.39	1.803	
16,900.0	7,200.0	16,510.0	6,870.0	178.3	177.4	39.84	8,818.0	-2,277.6	429.8	188.7	241.08	1.783	
17,000.0	7,200.0	16,610.0	6,870.0	180.1	179.3	39.84	8,918.0	-2,277.7	429.8	186.0	243.78	1.763	
17,100.0	7,200.0	16,710.0	6,870.0	182.0	181.2	39.84	9,018.0	-2,277.8	429.8	183.3	246.48	1.744	
17,200.0	7,200.0	16,810.0	6,870.0	183.8	183.0	39.84	9,118.0	-2,277.9	429.8	180.6	249.17	1.725	
17,300.0	7,200.0	16,910.0	6,870.0	185.7	184.9	39.84	9,218.0	-2,278.0	429.8	177.9	251.87	1.706	
17,342.9	7,200.0	16,952.9	6,870.0	186.5	185.7	39.84	9,260.9	-2,278.1	429.8	176.7	253.03	1.698	
17,400.0	7,200.0	17,010.0	6,870.0	187.6	186.8	39.84	9,318.0	-2,278.1	429.8	175.2	254.57	1.688	
17,453.4	7,200.0	17,063.4	6,870.0	188.5	187.8	39.84	9,371.4	-2,278.2	429.8	173.7	256.01	1.679	
17,486.1	7,200.0	17,093.2	6,870.0	189.2	188.3	39.84	9,401.1	-2,278.2	429.8	172.9	256.85	1.673 SF	

Company:	Synergy Resources	Local Co-ordinate Reference:	Well SRC Evans G-26-23-14CHZ
Project:	SEC.26-T5N-R66W	TVD Reference:	WELL @ 4754.0ft (RKB - 13')
Reference Site:	SRC Evans West Pad Sec.26-T5N-R66W	MD Reference:	WELL @ 4754.0ft (RKB - 13')
Site Error:	0.0ft	North Reference:	True
Reference Well:	SRC Evans G-26-23-14CHZ	Survey Calculation Method:	Minimum Curvature
Well Error:	0.0ft	Output errors are at	2.00 sigma
Reference Wellbore	Wellbore #1	Database:	Landmark
Reference Design:	Plan #1 (10-20-14)	Offset TVD Reference:	Offset Datum

Offset Design													Offset Site Error:	0.0 ft
Survey Program: 0-MWD													Offset Well Error:	0.0 ft
Reference		Offset		Semi Major Axis			Distance							Warning
Measured Depth (ft)	Vertical Depth (ft)	Measured Depth (ft)	Vertical Depth (ft)	Reference (ft)	Offset (ft)	Highside Toolface (°)	Offset Wellbore Centre +N/-S (ft)	+E/-W (ft)	Between Centres (ft)	Between Ellipses (ft)	Minimum Separation (ft)	Separation Factor		
0.0	0.0	0.0	0.0	0.0	0.0	180.00	-90.0	0.0	90.0					
100.0	100.0	99.0	99.0	0.1	0.1	180.00	-90.0	0.0	90.0	89.8	0.22	402.338		
200.0	200.0	199.0	199.0	0.3	0.3	180.00	-90.0	0.0	90.0	89.3	0.67	133.890		
300.0	300.0	299.0	299.0	0.6	0.6	180.00	-90.0	0.0	90.0	88.9	1.12	80.226		
400.0	400.0	399.0	399.0	0.8	0.8	180.00	-90.0	0.0	90.0	88.4	1.57	57.272		
500.0	500.0	499.0	499.0	1.0	1.0	-74.59	-90.0	0.0	89.5	87.5	2.01	44.633		
600.0	599.8	598.8	598.8	1.2	1.2	-77.89	-90.0	0.0	88.3	85.8	2.44	36.197		
700.0	699.5	698.5	698.5	1.4	1.5	-83.53	-90.0	0.0	86.8	83.9	2.90	29.986		
782.8	781.7	780.7	780.7	1.7	1.6	-90.00	-90.0	0.0	86.3	83.0	3.30	26.115 CC		
800.0	798.7	797.7	797.7	1.7	1.7	-91.54	-90.0	0.0	86.3	82.9	3.39	25.470 ES		
900.0	897.5	896.5	896.5	2.0	1.9	-101.60	-90.0	0.0	88.1	84.2	3.92	22.486		
1,000.0	995.6	994.6	994.6	2.4	2.1	-112.79	-90.0	0.0	93.9	89.4	4.47	20.991		
1,100.0	1,093.1	1,092.1	1,092.1	2.8	2.3	-123.81	-90.0	0.0	104.8	99.8	5.02	20.878		
1,200.0	1,189.6	1,188.6	1,188.6	3.3	2.6	-133.59	-90.0	0.0	121.4	115.9	5.54	21.906		
1,300.0	1,285.3	1,287.3	1,287.3	3.9	2.8	-141.51	-90.5	-1.2	142.6	136.6	6.02	23.674		
1,400.0	1,379.8	1,387.2	1,387.1	4.5	3.0	-147.24	-92.6	-5.5	166.1	159.7	6.48	25.627		
1,500.0	1,473.2	1,488.2	1,487.7	5.2	3.2	-151.41	-96.1	-13.1	191.1	184.2	6.95	27.490		
1,555.5	1,524.4	1,544.6	1,543.8	5.6	3.3	-153.23	-98.8	-18.8	205.5	198.2	7.22	28.438		
1,600.0	1,565.4	1,590.2	1,589.0	6.0	3.4	-154.54	-101.2	-24.0	216.8	209.3	7.46	29.067		
1,700.0	1,657.3	1,694.1	1,691.6	6.8	3.7	-156.72	-108.0	-38.5	240.4	232.4	8.01	30.001		
1,800.0	1,749.3	1,799.7	1,795.4	7.6	4.0	-158.10	-116.5	-56.7	261.2	252.6	8.61	30.328		
1,900.0	1,841.3	1,906.9	1,899.7	8.4	4.3	-158.87	-126.8	-78.6	278.9	269.6	9.26	30.111		
2,000.0	1,933.3	2,013.3	2,002.4	9.2	4.8	-159.17	-138.6	-103.8	293.4	283.5	9.97	29.445		
2,100.0	2,025.2	2,112.4	2,097.8	10.1	5.2	-159.31	-150.0	-128.3	307.0	296.3	10.68	28.751		
2,200.0	2,117.2	2,211.5	2,193.1	10.9	5.7	-159.45	-161.5	-152.8	320.5	309.1	11.41	28.091		
2,300.0	2,209.2	2,310.5	2,288.4	11.7	6.2	-159.57	-173.0	-177.4	334.0	321.8	12.15	27.490		
2,400.0	2,301.2	2,409.6	2,383.7	12.6	6.7	-159.68	-184.5	-201.9	347.5	334.6	12.90	26.940		
2,500.0	2,393.1	2,508.7	2,479.0	13.4	7.2	-159.78	-195.9	-226.4	361.0	347.4	13.66	26.437		
2,600.0	2,485.1	2,607.8	2,574.3	14.2	7.8	-159.88	-207.4	-250.9	374.5	360.1	14.42	25.977		
2,700.0	2,577.1	2,706.9	2,669.6	15.1	8.3	-159.97	-218.9	-275.5	388.1	372.9	15.19	25.554		
2,800.0	2,669.1	2,805.9	2,764.9	15.9	8.8	-160.05	-230.4	-300.0	401.6	385.6	15.96	25.166		
2,900.0	2,761.0	2,905.0	2,860.2	16.7	9.4	-160.13	-241.8	-324.5	415.1	398.4	16.73	24.809		
3,000.0	2,853.0	3,004.1	2,955.5	17.6	9.9	-160.20	-253.3	-349.0	428.6	411.1	17.51	24.479		
3,100.0	2,945.0	3,103.2	3,050.8	18.4	10.5	-160.27	-264.8	-373.6	442.2	423.9	18.29	24.174		
3,200.0	3,037.0	3,202.3	3,146.1	19.3	11.0	-160.34	-276.3	-398.1	455.7	436.6	19.07	23.892		
3,300.0	3,128.9	3,301.3	3,241.5	20.1	11.6	-160.40	-287.7	-422.6	469.2	449.3	19.86	23.630		
3,400.0	3,220.9	3,400.4	3,336.8	21.0	12.2	-160.46	-299.2	-447.1	482.7	462.1	20.64	23.386		
3,500.0	3,312.9	3,499.5	3,432.1	21.8	12.7	-160.51	-310.7	-471.7	496.3	474.8	21.43	23.158		
3,600.0	3,404.9	3,598.6	3,527.4	22.6	13.3	-160.56	-322.2	-496.2	509.8	487.6	22.22	22.945		
3,700.0	3,496.8	3,697.7	3,622.7	23.5	13.9	-160.61	-333.6	-520.7	523.3	500.3	23.01	22.746		
3,800.0	3,588.8	3,796.7	3,718.0	24.3	14.4	-160.66	-345.1	-545.2	536.8	513.0	23.80	22.559		
3,900.0	3,680.8	3,895.8	3,813.3	25.2	15.0	-160.70	-356.6	-569.7	550.4	525.8	24.59	22.384		
4,000.0	3,772.8	3,994.9	3,908.6	26.0	15.6	-160.74	-368.1	-594.3	563.9	538.5	25.38	22.219		
4,100.0	3,864.7	4,094.0	4,003.9	26.9	16.1	-160.78	-379.5	-618.8	577.4	551.2	26.17	22.063		
4,200.0	3,956.7	4,193.1	4,099.2	27.7	16.7	-160.82	-391.0	-643.3	590.9	564.0	26.96	21.916		
4,300.0	4,048.7	4,292.1	4,194.5	28.6	17.3	-160.86	-402.5	-667.8	604.5	576.7	27.76	21.777		
4,400.0	4,140.7	4,391.2	4,289.9	29.4	17.9	-160.89	-414.0	-692.4	618.0	589.5	28.55	21.645		
4,500.0	4,232.6	4,490.3	4,385.2	30.2	18.4	-160.93	-425.4	-716.9	631.5	602.2	29.35	21.520		
4,600.0	4,324.6	4,589.4	4,480.5	31.1	19.0	-160.96	-436.9	-741.4	645.1	614.9	30.14	21.402		
4,700.0	4,416.6	4,688.5	4,575.8	31.9	19.6	-160.99	-448.4	-765.9	658.6	627.7	30.94	21.289		
4,800.0	4,508.6	4,787.5	4,671.1	32.8	20.2	-161.02	-459.9	-790.5	672.1	640.4	31.73	21.182		
4,900.0	4,600.5	4,886.6	4,766.4	33.6	20.7	-161.05	-471.3	-815.0	685.6	653.1	32.53	21.080		

CC - Min centre to center distance or convergent point, SF - min separation factor, ES - min ellipse separation

Company:	Synergy Resources	Local Co-ordinate Reference:	Well SRC Evans G-26-23-14CHZ
Project:	SEC.26-T5N-R66W	TVD Reference:	WELL @ 4754.0ft (RKB - 13')
Reference Site:	SRC Evans West Pad Sec.26-T5N-R66W	MD Reference:	WELL @ 4754.0ft (RKB - 13')
Site Error:	0.0ft	North Reference:	True
Reference Well:	SRC Evans G-26-23-14CHZ	Survey Calculation Method:	Minimum Curvature
Well Error:	0.0ft	Output errors are at	2.00 sigma
Reference Wellbore	Wellbore #1	Database:	Landmark
Reference Design:	Plan #1 (10-20-14)	Offset TVD Reference:	Offset Datum

Offset Design												Offset Site Error:	0.0 ft
SRC Evans West Pad Sec.26-T5N-R66W - SRC Evans B-26-23-14CHZ - Wellbore #1 - Plan #1 (10-20)												Offset Well Error:	0.0 ft
Survey Program: 0-MWD													
Reference		Offset		Semi Major Axis			Distance						
Measured Depth (ft)	Vertical Depth (ft)	Measured Depth (ft)	Vertical Depth (ft)	Reference (ft)	Offset (ft)	Highside Toolface (°)	Offset Wellbore Centre +N/-S (ft)	+E/-W (ft)	Between Centres (ft)	Between Ellipses (ft)	Minimum Separation (ft)	Separation Factor	Warning
5,000.0	4,692.5	4,985.7	4,861.7	34.5	21.3	-161.07	-482.8	-839.5	699.2	665.9	33.32	20.982	
5,100.0	4,784.5	5,084.8	4,957.0	35.3	21.9	-161.10	-494.3	-864.0	712.7	678.6	34.12	20.889	
5,200.0	4,876.5	5,183.9	5,052.3	36.2	22.5	-161.13	-505.8	-888.6	726.2	691.3	34.91	20.800	
5,300.0	4,968.4	5,282.9	5,147.6	37.0	23.1	-161.15	-517.2	-913.1	739.8	704.1	35.71	20.715	
5,400.0	5,060.4	5,382.0	5,242.9	37.8	23.6	-161.17	-528.7	-937.6	753.3	716.8	36.51	20.634	
5,500.0	5,152.4	5,481.1	5,338.3	38.7	24.2	-161.20	-540.2	-962.1	766.8	729.5	37.30	20.556	
5,600.0	5,244.4	5,580.2	5,433.6	39.5	24.8	-161.22	-551.7	-986.6	780.4	742.3	38.10	20.481	
5,700.0	5,336.3	5,679.3	5,528.9	40.4	25.4	-161.24	-563.1	-1,011.2	793.9	755.0	38.90	20.409 SF	

Company:	Synergy Resources	Local Co-ordinate Reference:	Well SRC Evans G-26-23-14CHZ
Project:	SEC.26-T5N-R66W	TVD Reference:	WELL @ 4754.0ft (RKB - 13')
Reference Site:	SRC Evans West Pad Sec.26-T5N-R66W	MD Reference:	WELL @ 4754.0ft (RKB - 13')
Site Error:	0.0ft	North Reference:	True
Reference Well:	SRC Evans G-26-23-14CHZ	Survey Calculation Method:	Minimum Curvature
Well Error:	0.0ft	Output errors are at	2.00 sigma
Reference Wellbore	Wellbore #1	Database:	Landmark
Reference Design:	Plan #1 (10-20-14)	Offset TVD Reference:	Offset Datum

Offset Design													Offset Site Error:	0.0 ft
Survey Program: 0-MWD													Offset Well Error:	0.0 ft
Reference		Offset		Semi Major Axis			Distance							Warning
Measured Depth (ft)	Vertical Depth (ft)	Measured Depth (ft)	Vertical Depth (ft)	Reference (ft)	Offset (ft)	Highside Toolface (°)	Offset Wellbore Centre +N/-S (ft)	+E/-W (ft)	Between Centres (ft)	Between Ellipses (ft)	Minimum Separation (ft)	Separation Factor		
0.0	0.0	0.0	0.0	0.0	0.0	180.00	-67.4	0.0	67.4					
100.0	100.0	99.0	99.0	0.1	0.1	180.00	-67.4	0.0	67.4	67.2	0.22	301.360		
200.0	200.0	199.0	199.0	0.3	0.3	180.00	-67.4	0.0	67.4	66.7	0.67	100.286		
300.0	300.0	299.0	299.0	0.6	0.6	180.00	-67.4	0.0	67.4	66.3	1.12	60.091		
400.0	400.0	399.0	399.0	0.8	0.8	180.00	-67.4	0.0	67.4	65.8	1.57	42.898		
500.0	500.0	499.0	499.0	1.0	1.0	-74.95	-67.4	0.0	66.9	64.9	2.01	33.374		
600.0	599.8	598.8	598.8	1.2	1.2	-79.38	-67.4	0.0	65.8	63.3	2.44	26.971		
700.0	699.5	698.5	698.5	1.4	1.5	-86.97	-67.4	0.0	64.7	61.8	2.90	22.345		
731.2	730.5	729.5	729.5	1.5	1.5	-90.00	-67.4	0.0	64.6	61.6	3.05	21.190 CC, ES		
800.0	798.7	797.7	797.7	1.7	1.7	-97.64	-67.4	0.0	65.2	61.8	3.39	19.250		
900.0	897.5	896.5	896.5	2.0	1.9	-110.39	-67.4	0.0	69.1	65.2	3.91	17.677		
1,000.0	995.6	994.6	994.6	2.4	2.1	-123.35	-67.4	0.0	77.9	73.5	4.43	17.581		
1,100.0	1,093.1	1,094.0	1,094.0	2.8	2.3	-134.19	-68.0	-1.4	91.4	86.5	4.92	18.577		
1,200.0	1,189.6	1,194.1	1,194.0	3.3	2.5	-141.98	-69.9	-6.1	107.5	102.2	5.38	19.976		
1,300.0	1,285.3	1,295.0	1,294.5	3.9	2.7	-147.55	-73.1	-14.1	125.3	119.5	5.86	21.404		
1,400.0	1,379.8	1,396.7	1,395.4	4.5	3.0	-151.59	-77.7	-25.4	144.1	137.8	6.34	22.714		
1,500.0	1,473.2	1,499.1	1,496.6	5.2	3.3	-154.57	-83.7	-40.2	163.5	156.7	6.86	23.845		
1,555.5	1,524.4	1,556.3	1,552.9	5.6	3.4	-155.89	-87.6	-49.9	174.5	167.3	7.16	24.378		
1,600.0	1,565.4	1,602.4	1,598.0	6.0	3.6	-156.83	-91.1	-58.5	183.0	175.6	7.42	24.679		
1,700.0	1,657.3	1,707.1	1,699.9	6.8	4.0	-158.30	-100.0	-80.5	200.1	192.0	8.04	24.889		
1,800.0	1,749.3	1,812.9	1,802.1	7.6	4.4	-159.09	-110.5	-106.2	213.9	205.2	8.71	24.553		
1,900.0	1,841.3	1,919.7	1,904.0	8.4	5.0	-159.34	-122.4	-135.6	224.5	215.1	9.45	23.766		
2,000.0	1,933.3	2,021.4	2,000.2	9.2	5.5	-159.26	-134.8	-166.1	232.7	222.4	10.22	22.766		
2,100.0	2,025.2	2,121.1	2,094.5	10.1	6.1	-159.18	-147.0	-196.1	240.7	229.7	11.01	21.856		
2,200.0	2,117.2	2,220.8	2,188.8	10.9	6.7	-159.10	-159.2	-226.2	248.7	236.9	11.82	21.043		
2,300.0	2,209.2	2,320.4	2,283.0	11.7	7.4	-159.03	-171.3	-256.2	256.7	244.1	12.64	20.314		
2,400.0	2,301.2	2,420.1	2,377.3	12.6	8.0	-158.96	-183.5	-286.2	264.7	251.3	13.47	19.658		
2,500.0	2,393.1	2,519.8	2,471.6	13.4	8.6	-158.89	-195.7	-316.2	272.8	258.4	14.31	19.067		
2,600.0	2,485.1	2,619.5	2,565.8	14.2	9.3	-158.83	-207.9	-346.2	280.8	265.6	15.15	18.532		
2,700.0	2,577.1	2,719.2	2,660.1	15.1	10.0	-158.77	-220.0	-376.2	288.8	272.8	16.00	18.046		
2,800.0	2,669.1	2,818.8	2,754.4	15.9	10.6	-158.72	-232.2	-406.2	296.8	280.0	16.86	17.603		
2,900.0	2,761.0	2,918.5	2,848.6	16.7	11.3	-158.67	-244.4	-436.3	304.8	287.1	17.72	17.199		
3,000.0	2,853.0	3,018.2	2,942.9	17.6	12.0	-158.62	-256.6	-466.3	312.9	294.3	18.59	16.829		
3,100.0	2,945.0	3,117.9	3,037.2	18.4	12.6	-158.57	-268.8	-496.3	320.9	301.4	19.46	16.489		
3,200.0	3,037.0	3,217.5	3,131.4	19.3	13.3	-158.53	-280.9	-526.3	328.9	308.6	20.33	16.175		
3,300.0	3,128.9	3,317.2	3,225.7	20.1	14.0	-158.48	-293.1	-556.3	336.9	315.7	21.21	15.885		
3,400.0	3,220.9	3,416.9	3,320.0	21.0	14.7	-158.44	-305.3	-586.3	344.9	322.9	22.09	15.616		
3,500.0	3,312.9	3,516.6	3,414.2	21.8	15.3	-158.40	-317.5	-616.3	353.0	330.0	22.97	15.366		
3,600.0	3,404.9	3,616.3	3,508.5	22.6	16.0	-158.37	-329.6	-646.4	361.0	337.1	23.85	15.134		
3,700.0	3,496.8	3,715.9	3,602.8	23.5	16.7	-158.33	-341.8	-676.4	369.0	344.3	24.74	14.916		
3,800.0	3,588.8	3,815.6	3,697.0	24.3	17.4	-158.30	-354.0	-706.4	377.0	351.4	25.63	14.713		
3,900.0	3,680.8	3,915.3	3,791.3	25.2	18.1	-158.27	-366.2	-736.4	385.1	358.5	26.51	14.523		
4,000.0	3,772.8	4,015.0	3,885.6	26.0	18.7	-158.24	-378.4	-766.4	393.1	365.7	27.40	14.344		
4,100.0	3,864.7	4,114.6	3,979.8	26.9	19.4	-158.21	-390.5	-796.4	401.1	372.8	28.29	14.176		
4,200.0	3,956.7	4,214.3	4,074.1	27.7	20.1	-158.18	-402.7	-826.4	409.1	379.9	29.19	14.018		
4,300.0	4,048.7	4,314.0	4,168.4	28.6	20.8	-158.15	-414.9	-856.5	417.2	387.1	30.08	13.868		
4,400.0	4,140.7	4,413.7	4,262.6	29.4	21.5	-158.12	-427.1	-886.5	425.2	394.2	30.97	13.727		
4,500.0	4,232.6	4,513.3	4,356.9	30.2	22.2	-158.10	-439.3	-916.5	433.2	401.3	31.87	13.593		
4,600.0	4,324.6	4,613.0	4,451.2	31.1	22.9	-158.07	-451.4	-946.5	441.2	408.5	32.77	13.466		
4,700.0	4,416.6	4,712.7	4,545.4	31.9	23.5	-158.05	-463.6	-976.5	449.3	415.6	33.66	13.346		
4,800.0	4,508.6	4,812.4	4,639.7	32.8	24.2	-158.03	-475.8	-1,006.5	457.3	422.7	34.56	13.231		
4,900.0	4,600.5	4,912.1	4,734.0	33.6	24.9	-158.00	-488.0	-1,036.6	465.3	429.8	35.46	13.122		

CC - Min centre to center distance or convergent point, SF - min separation factor, ES - min ellipse separation

Offset Design													Offset Site Error:	
Survey Program: 0-MWD													Offset Well Error:	
Reference		Offset		Semi Major Axis			Distance						Warning	
Measured Depth	Vertical Depth	Measured Depth	Vertical Depth	Reference	Offset	Highside Toolface	Offset Wellbore Centre		Between Centres	Between Ellipses	Minimum Separation	Separation Factor		
Depth (ft)	Depth (ft)	Depth (ft)	Depth (ft)	(ft)	(ft)	(°)	+N-S (ft)	+E-W (ft)	(ft)	(ft)	(ft)			
5,000.0	4,692.5	5,011.7	4,828.3	34.5	25.6	-157.98	-500.1	-1,066.6	473.3	437.0	36.36	13.019		
5,100.0	4,784.5	5,111.4	4,922.5	35.3	26.3	-157.96	-512.3	-1,096.6	481.3	444.1	37.26	12.920		
5,200.0	4,876.5	5,211.1	5,016.8	36.2	27.0	-157.94	-524.5	-1,126.6	489.4	451.2	38.16	12.825		
5,300.0	4,968.4	5,310.8	5,111.1	37.0	27.7	-157.92	-536.7	-1,156.6	497.4	458.3	39.06	12.735		
5,400.0	5,060.4	5,410.4	5,205.3	37.8	28.4	-157.90	-548.9	-1,186.6	505.4	465.5	39.96	12.648		
5,500.0	5,152.4	5,510.1	5,299.6	38.7	29.0	-157.89	-561.0	-1,216.6	513.4	472.6	40.86	12.566		
5,600.0	5,244.4	5,609.8	5,393.9	39.5	29.7	-157.87	-573.2	-1,246.7	521.5	479.7	41.76	12.486		
5,700.0	5,336.3	5,709.5	5,488.1	40.4	30.4	-157.85	-585.4	-1,276.7	529.5	486.8	42.67	12.410		
5,800.0	5,428.3	5,809.2	5,582.4	41.2	31.1	-157.83	-597.6	-1,306.7	537.5	494.0	43.57	12.337		
5,900.0	5,520.3	5,908.8	5,676.7	42.1	31.8	-157.82	-609.7	-1,336.7	545.5	501.1	44.47	12.267		
6,000.0	5,612.3	6,008.5	5,770.9	42.9	32.5	-157.80	-621.9	-1,366.7	553.6	508.2	45.38	12.200		
6,100.0	5,704.2	6,108.2	5,865.2	43.8	33.2	-157.79	-634.1	-1,396.7	561.6	515.3	46.28	12.135		
6,200.0	5,796.2	6,207.9	5,959.5	44.6	33.9	-157.77	-646.3	-1,426.7	569.6	522.4	47.18	12.072		
6,300.0	5,888.2	6,307.5	6,053.7	45.5	34.6	-157.76	-658.5	-1,456.8	577.6	529.6	48.09	12.012		
6,400.0	5,980.2	6,411.9	6,152.6	46.3	35.2	-157.92	-669.4	-1,488.2	585.5	536.6	48.85	11.986 SF		
6,500.0	6,072.1	6,519.5	6,255.0	47.2	35.8	-159.41	-666.9	-1,520.9	592.1	543.6	48.50	12.207		
6,600.0	6,164.1	6,620.7	6,350.0	48.0	36.2	-162.16	-649.9	-1,551.1	598.2	551.1	47.17	12.682		
6,700.0	6,256.1	6,712.4	6,433.3	48.8	36.5	-165.70	-622.4	-1,577.7	605.9	560.6	45.38	13.352		
6,800.0	6,348.1	6,793.4	6,503.6	49.7	36.7	-169.57	-589.1	-1,600.1	617.4	573.7	43.71	14.125		
6,900.0	6,440.0	6,863.7	6,561.3	50.5	36.8	-173.40	-553.5	-1,618.6	634.5	591.9	42.57	14.906		
6,925.6	6,463.6	6,880.1	6,574.3	50.8	36.8	-174.34	-544.4	-1,622.7	640.0	597.6	42.39	15.099		
6,950.0	6,486.1	6,895.4	6,586.2	50.9	36.9	179.82	-535.6	-1,626.5	645.6	603.5	42.16	15.314		
7,000.0	6,532.3	6,926.3	6,609.7	51.3	36.9	167.48	-517.0	-1,634.0	658.0	616.0	41.96	15.681		
7,050.0	6,578.5	6,956.8	6,632.2	51.6	36.9	155.14	-497.6	-1,641.2	671.3	629.2	42.10	15.943		
7,100.0	6,624.6	6,987.0	6,653.6	51.9	37.0	143.38	-477.5	-1,648.0	685.3	642.8	42.54	16.110		
7,150.0	6,670.2	7,017.0	6,674.0	52.2	37.0	132.65	-456.6	-1,654.6	699.8	656.6	43.18	16.209		
7,200.0	6,715.2	7,050.0	6,695.6	52.5	37.0	123.00	-432.6	-1,661.4	714.6	670.7	43.96	16.255		
7,250.0	6,759.3	7,076.0	6,711.8	52.7	37.0	114.86	-412.9	-1,666.6	729.5	684.9	44.65	16.338		
7,300.0	6,802.3	7,100.0	6,726.1	52.9	37.0	107.88	-394.2	-1,671.2	744.4	699.2	45.20	16.468		
7,350.0	6,844.0	7,134.3	6,745.6	53.2	37.0	101.56	-366.7	-1,677.4	759.0	713.2	45.80	16.573		
7,400.0	6,884.3	7,163.2	6,761.0	53.3	37.0	96.25	-342.7	-1,682.4	773.4	727.3	46.09	16.779		
7,450.0	6,922.8	7,200.0	6,779.2	53.5	37.0	91.47	-311.3	-1,688.2	787.3	741.0	46.27	17.016		

Company:	Synergy Resources	Local Co-ordinate Reference:	Well SRC Evans G-26-23-14CHZ
Project:	SEC.26-T5N-R66W	TVD Reference:	WELL @ 4754.0ft (RKB - 13')
Reference Site:	SRC Evans West Pad Sec.26-T5N-R66W	MD Reference:	WELL @ 4754.0ft (RKB - 13')
Site Error:	0.0ft	North Reference:	True
Reference Well:	SRC Evans G-26-23-14CHZ	Survey Calculation Method:	Minimum Curvature
Well Error:	0.0ft	Output errors are at	2.00 sigma
Reference Wellbore	Wellbore #1	Database:	Landmark
Reference Design:	Plan #1 (10-20-14)	Offset TVD Reference:	Offset Datum

Offset Design													Offset Site Error:	0.0 ft
Survey Program: 0-MWD													Offset Well Error:	0.0 ft
Reference		Offset		Semi Major Axis			Distance							Warning
Measured Depth (ft)	Vertical Depth (ft)	Measured Depth (ft)	Vertical Depth (ft)	Reference (ft)	Offset (ft)	Highside Toolface (°)	Offset Wellbore Centre +N/-S (ft)	+E/-W (ft)	Between Centres (ft)	Between Ellipses (ft)	Minimum Separation (ft)	Separation Factor		
0.0	0.0	1.0	1.0	0.0	0.0	0.00	22.6	0.0	22.6	22.6	0.00	N/A		
100.0	100.0	101.0	101.0	0.1	0.1	0.00	22.6	0.0	22.6	22.4	0.23	99.497		
200.0	200.0	201.0	201.0	0.3	0.3	0.00	22.6	0.0	22.6	21.9	0.68	33.392		
300.0	300.0	301.2	301.1	0.6	0.6	-4.45	22.1	-1.7	22.2	21.1	1.11	19.914		
384.4	384.4	385.6	385.4	0.8	0.7	-15.42	21.0	-5.8	21.8	20.3	1.49	14.619 CC		
400.0	400.0	401.1	400.9	0.8	0.8	-18.18	20.7	-6.8	21.8	20.2	1.56	13.984 ES		
500.0	500.0	500.7	500.1	1.0	1.0	70.83	18.4	-15.2	23.2	21.2	2.01	11.543		
600.0	599.8	600.0	598.7	1.2	1.3	56.64	15.2	-26.9	26.6	24.1	2.49	10.693		
700.0	699.5	699.2	696.6	1.4	1.6	46.19	11.1	-41.8	31.2	28.2	2.98	10.460		
800.0	798.7	798.0	793.7	1.7	2.0	38.72	6.0	-60.0	36.5	33.0	3.49	10.461		
900.0	897.5	896.7	889.8	2.0	2.5	33.32	0.2	-81.3	42.4	38.3	4.02	10.528		
1,000.0	995.6	995.1	984.9	2.4	3.0	29.35	-6.6	-105.7	48.4	43.9	4.57	10.590		
1,100.0	1,093.1	1,093.3	1,078.9	2.8	3.6	26.35	-14.2	-133.2	54.7	49.5	5.15	10.621		
1,200.0	1,189.6	1,191.3	1,171.6	3.3	4.2	24.05	-22.6	-163.7	61.0	55.3	5.75	10.611		
1,300.0	1,285.3	1,289.0	1,263.0	3.9	4.9	22.25	-31.8	-197.1	67.4	61.0	6.38	10.559		
1,400.0	1,379.8	1,386.5	1,352.9	4.5	5.7	20.83	-41.8	-233.5	73.7	66.7	7.03	10.483		
1,500.0	1,473.2	1,483.9	1,441.3	5.2	6.5	19.69	-52.7	-272.7	80.0	72.3	7.73	10.356		
1,555.5	1,524.4	1,538.9	1,490.8	5.6	7.0	19.21	-59.1	-295.9	83.2	75.1	8.13	10.235		
1,600.0	1,565.4	1,583.4	1,530.8	6.0	7.4	18.96	-64.2	-314.6	85.4	76.9	8.49	10.067		
1,700.0	1,657.3	1,683.2	1,620.6	6.8	8.3	18.43	-75.8	-356.8	90.4	81.1	9.28	9.734		
1,800.0	1,749.3	1,783.1	1,710.4	7.6	9.3	17.95	-87.5	-398.9	95.3	85.2	10.08	9.452		
1,900.0	1,841.3	1,883.0	1,800.2	8.4	10.2	17.53	-99.1	-441.0	100.2	89.4	10.88	9.210		
2,000.0	1,933.3	1,982.9	1,890.1	9.2	11.1	17.14	-110.7	-483.1	105.2	93.5	11.69	9.002		
2,100.0	2,025.2	2,082.7	1,979.9	10.1	12.1	16.79	-122.3	-525.2	110.1	97.7	12.49	8.822		
2,200.0	2,117.2	2,182.6	2,069.7	10.9	13.0	16.47	-133.9	-567.3	115.1	101.8	13.29	8.663		
2,300.0	2,209.2	2,282.5	2,159.5	11.7	14.0	16.17	-145.6	-609.4	120.1	106.0	14.09	8.523		
2,400.0	2,301.2	2,382.4	2,249.3	12.6	14.9	15.90	-157.2	-651.6	125.0	110.1	14.89	8.399		
2,500.0	2,393.1	2,482.2	2,339.1	13.4	15.8	15.65	-168.8	-693.7	130.0	114.3	15.69	8.287		
2,600.0	2,485.1	2,582.1	2,428.9	14.2	16.8	15.41	-180.4	-735.8	135.0	118.5	16.48	8.187		
2,700.0	2,577.1	2,682.0	2,518.7	15.1	17.7	15.20	-192.0	-777.9	139.9	122.7	17.28	8.097		
2,800.0	2,669.1	2,781.9	2,608.6	15.9	18.7	15.00	-203.7	-820.0	144.9	126.8	18.08	8.015		
2,900.0	2,761.0	2,881.7	2,698.4	16.7	19.6	14.81	-215.3	-862.1	149.9	131.0	18.88	7.940		
3,000.0	2,853.0	2,981.6	2,788.2	17.6	20.6	14.63	-226.9	-904.3	154.9	135.2	19.67	7.872		
3,100.0	2,945.0	3,081.5	2,878.0	18.4	21.5	14.47	-238.5	-946.4	159.8	139.4	20.47	7.809		
3,200.0	3,037.0	3,181.4	2,967.8	19.3	22.5	14.31	-250.1	-988.5	164.8	143.5	21.26	7.751		
3,300.0	3,128.9	3,281.2	3,057.6	20.1	23.4	14.17	-261.8	-1,030.6	169.8	147.7	22.06	7.698		
3,400.0	3,220.9	3,381.1	3,147.4	21.0	24.4	14.03	-273.4	-1,072.7	174.8	151.9	22.85	7.648		
3,500.0	3,312.9	3,481.0	3,237.2	21.8	25.3	13.90	-285.0	-1,114.8	179.8	156.1	23.65	7.602		
3,600.0	3,404.9	3,580.9	3,327.1	22.6	26.3	13.78	-296.6	-1,156.9	184.7	160.3	24.44	7.559		
3,700.0	3,496.8	3,680.7	3,416.9	23.5	27.2	13.66	-308.2	-1,199.1	189.7	164.5	25.23	7.519		
3,800.0	3,588.8	3,780.6	3,506.7	24.3	28.2	13.55	-319.9	-1,241.2	194.7	168.7	26.03	7.481		
3,900.0	3,680.8	3,880.5	3,596.5	25.2	29.1	13.45	-331.5	-1,283.3	199.7	172.9	26.82	7.446		
4,000.0	3,772.8	3,980.4	3,686.3	26.0	30.1	13.35	-343.1	-1,325.4	204.7	177.1	27.61	7.412		
4,100.0	3,864.7	4,080.2	3,776.1	26.9	31.0	13.25	-354.7	-1,367.5	209.7	181.2	28.40	7.381		
4,200.0	3,956.7	4,180.1	3,865.9	27.7	32.0	13.16	-366.3	-1,409.6	214.6	185.4	29.20	7.352		
4,300.0	4,048.7	4,280.0	3,955.7	28.6	32.9	13.07	-377.9	-1,451.8	219.6	189.6	29.99	7.324		
4,400.0	4,140.7	4,379.9	4,045.6	29.4	33.9	12.99	-389.6	-1,493.9	224.6	193.8	30.78	7.297		
4,500.0	4,232.6	4,479.7	4,135.4	30.2	34.8	12.91	-401.2	-1,536.0	229.6	198.0	31.57	7.272		
4,600.0	4,324.6	4,579.6	4,225.2	31.1	35.8	12.84	-412.8	-1,578.1	234.6	202.2	32.36	7.249		
4,700.0	4,416.6	4,679.5	4,315.0	31.9	36.7	12.76	-424.4	-1,620.2	239.6	206.4	33.15	7.226		
4,800.0	4,508.6	4,779.4	4,404.8	32.8	37.7	12.69	-436.0	-1,662.3	244.6	210.6	33.95	7.205		
4,900.0	4,600.5	4,879.2	4,494.6	33.6	38.6	12.63	-447.7	-1,704.4	249.6	214.8	34.74	7.184		

CC - Min centre to center distance or convergent point, SF - min separation factor, ES - min ellipse separation

Company:	Synergy Resources	Local Co-ordinate Reference:	Well SRC Evans G-26-23-14CHZ
Project:	SEC.26-T5N-R66W	TVD Reference:	WELL @ 4754.0ft (RKB - 13')
Reference Site:	SRC Evans West Pad Sec.26-T5N-R66W	MD Reference:	WELL @ 4754.0ft (RKB - 13')
Site Error:	0.0ft	North Reference:	True
Reference Well:	SRC Evans G-26-23-14CHZ	Survey Calculation Method:	Minimum Curvature
Well Error:	0.0ft	Output errors are at	2.00 sigma
Reference Wellbore	Wellbore #1	Database:	Landmark
Reference Design:	Plan #1 (10-20-14)	Offset TVD Reference:	Offset Datum

Offset Design													Offset Site Error:	0.0 ft
Survey Program: 0-MWD													Offset Well Error:	0.0 ft
Reference		Offset		Semi Major Axis			Distance							Warning
Measured Depth (ft)	Vertical Depth (ft)	Measured Depth (ft)	Vertical Depth (ft)	Reference (ft)	Offset (ft)	Highside Toolface (°)	Offset Wellbore Centre +N/-S (ft)	+E/-W (ft)	Between Centres (ft)	Between Ellipses (ft)	Minimum Separation (ft)	Separation Factor		
5,000.0	4,692.5	4,979.1	4,584.4	34.5	39.6	12.56	-459.3	-1,746.6	254.5	219.0	35.53	7.165		
5,100.0	4,784.5	5,079.0	4,674.2	35.3	40.5	12.50	-470.9	-1,788.7	259.5	223.2	36.32	7.146		
5,200.0	4,876.5	5,178.9	4,764.1	36.2	41.5	12.44	-482.5	-1,830.8	264.5	227.4	37.11	7.128		
5,300.0	4,968.4	5,278.7	4,853.9	37.0	42.4	12.38	-494.1	-1,872.9	269.5	231.6	37.90	7.111		
5,400.0	5,060.4	5,378.6	4,943.7	37.8	43.4	12.33	-505.8	-1,915.0	274.5	235.8	38.69	7.095		
5,500.0	5,152.4	5,478.5	5,033.5	38.7	44.3	12.28	-517.4	-1,957.1	279.5	240.0	39.48	7.079		
5,600.0	5,244.4	5,578.4	5,123.3	39.5	45.3	12.22	-529.0	-1,999.3	284.5	244.2	40.27	7.064		
5,700.0	5,336.3	5,678.2	5,213.1	40.4	46.3	12.18	-540.6	-2,041.4	289.5	248.4	41.06	7.050		
5,800.0	5,428.3	5,778.1	5,302.9	41.2	47.2	12.13	-552.2	-2,083.5	294.5	252.6	41.85	7.036		
5,900.0	5,520.3	5,878.0	5,392.7	42.1	48.2	12.08	-563.9	-2,125.6	299.5	256.8	42.64	7.023		
6,000.0	5,612.3	5,977.9	5,482.6	42.9	49.1	12.04	-575.5	-2,167.7	304.4	261.0	43.43	7.010		
6,100.0	5,704.2	6,077.7	5,572.4	43.8	50.1	11.99	-587.1	-2,209.8	309.4	265.2	44.22	6.997		
6,200.0	5,796.2	6,177.6	5,662.2	44.6	51.0	11.95	-598.7	-2,251.9	314.4	269.4	45.01	6.986		
6,300.0	5,888.2	6,277.5	5,752.0	45.5	52.0	11.91	-610.3	-2,294.1	319.4	273.6	45.80	6.974		
6,400.0	5,980.2	6,377.4	5,841.8	46.3	52.9	11.87	-622.0	-2,336.2	324.4	277.8	46.59	6.963		
6,500.0	6,072.1	6,477.2	5,931.6	47.2	53.9	11.83	-633.6	-2,378.3	329.4	282.0	47.38	6.952		
6,600.0	6,164.1	6,577.1	6,021.4	48.0	54.8	11.80	-645.2	-2,420.4	334.4	286.2	48.17	6.942		
6,700.0	6,256.1	6,677.0	6,111.3	48.8	55.8	11.76	-656.8	-2,462.5	339.4	290.4	48.96	6.932		
6,800.0	6,348.1	6,776.8	6,201.2	49.7	56.7	12.17	-665.9	-2,505.4	344.3	294.2	50.02	6.883		
6,900.0	6,440.0	6,876.3	6,293.0	50.5	57.4	14.69	-661.9	-2,547.8	348.9	296.3	52.52	6.642		
6,925.6	6,463.6	6,903.1	6,315.2	50.8	57.6	15.66	-658.8	-2,558.2	350.2	296.7	53.44	6.552		
6,950.0	6,486.1	6,926.4	6,336.1	50.9	57.7	12.22	-655.1	-2,568.0	351.5	297.1	54.46	6.455		
7,000.0	6,532.3	6,973.6	6,377.8	51.3	58.0	4.73	-645.2	-2,587.6	354.6	298.1	56.55	6.272		
7,050.0	6,578.5	7,020.1	6,418.3	51.6	58.3	-2.88	-632.6	-2,606.6	358.2	299.6	58.59	6.113		
7,100.0	6,624.6	7,065.9	6,457.4	51.9	58.6	-10.06	-617.3	-2,624.9	362.0	301.5	60.51	5.983		
7,150.0	6,670.2	7,111.0	6,495.0	52.2	58.8	-16.39	-599.6	-2,642.6	366.2	304.0	62.23	5.884		
7,200.0	6,715.2	7,155.6	6,531.0	52.5	59.1	-21.69	-579.6	-2,659.5	370.6	306.9	63.70	5.818		
7,250.0	6,759.3	7,200.0	6,565.7	52.7	59.3	-25.96	-557.2	-2,675.8	375.2	310.3	64.88	5.783		
7,300.0	6,802.3	7,243.1	6,598.2	52.9	59.4	-29.35	-533.3	-2,691.1	379.9	314.2	65.70	5.782		
7,350.0	6,844.0	7,286.2	6,629.2	53.2	59.6	-31.97	-507.3	-2,705.7	384.7	318.5	66.18	5.812		
7,400.0	6,884.3	7,328.8	6,658.5	53.3	59.7	-33.98	-479.5	-2,719.4	389.4	323.1	66.30	5.874		
7,450.0	6,922.8	7,371.1	6,686.0	53.5	59.9	-35.50	-450.2	-2,732.4	394.1	328.0	66.06	5.966		
7,500.0	6,959.5	7,413.0	6,711.6	53.7	60.0	-36.66	-419.3	-2,744.4	398.7	333.2	65.48	6.088		
7,550.0	6,994.1	7,454.5	6,735.4	53.8	60.1	-37.53	-387.2	-2,755.6	403.1	338.5	64.60	6.240		
7,600.0	7,026.5	7,500.0	6,759.5	53.9	60.2	-38.10	-350.3	-2,767.0	407.3	343.9	63.46	6.418		
7,650.0	7,056.5	7,536.8	6,777.4	54.0	60.2	-38.64	-319.2	-2,775.4	411.3	349.2	62.06	6.626		
7,700.0	7,083.9	7,577.6	6,795.5	54.1	60.3	-38.99	-283.7	-2,783.9	414.9	354.4	60.53	6.855		
7,750.0	7,108.7	7,618.2	6,811.7	54.1	60.3	-39.24	-247.3	-2,791.6	418.3	359.4	58.90	7.101		
7,800.0	7,130.8	7,658.6	6,825.9	54.2	60.4	-39.41	-210.1	-2,798.3	421.3	364.0	57.26	7.358		
7,850.0	7,149.9	7,700.0	6,838.5	54.2	60.4	-39.53	-171.1	-2,804.2	423.9	368.2	55.68	7.613		
7,900.0	7,166.0	7,739.0	6,848.4	54.2	60.4	-39.62	-133.7	-2,808.9	426.1	371.9	54.26	7.854		
7,950.0	7,179.1	7,779.0	6,856.7	54.2	60.4	-39.68	-94.8	-2,812.9	427.9	374.8	53.07	8.063		
8,000.0	7,189.1	7,818.9	6,863.0	54.2	60.4	-39.72	-55.4	-2,815.9	429.3	377.1	52.20	8.224		
8,050.0	7,195.8	7,858.8	6,867.3	54.2	60.4	-39.75	-15.8	-2,817.9	430.2	378.5	51.70	8.321		
8,100.0	7,199.4	7,900.0	6,869.6	54.2	60.4	-39.77	25.3	-2,819.1	430.7	379.0	51.62	8.343		
8,130.3	7,200.0	7,924.3	6,870.0	54.2	60.4	-39.78	49.6	-2,819.3	430.7	378.9	51.78	8.318		
8,147.7	7,200.0	7,939.9	6,870.0	54.2	60.4	-39.78	65.1	-2,819.3	430.7	378.7	51.98	8.287		
8,200.0	7,200.0	7,992.1	6,870.0	54.1	60.4	-39.78	117.4	-2,819.4	430.7	378.1	52.59	8.190		
8,300.0	7,200.0	8,092.1	6,870.0	54.1	60.3	-39.78	217.4	-2,819.5	430.7	376.9	53.80	8.006		
8,400.0	7,200.0	8,192.1	6,870.0	54.2	60.4	-39.79	317.4	-2,819.6	430.7	375.6	55.12	7.815		
8,500.0	7,200.0	8,292.1	6,870.0	54.3	60.4	-39.79	417.4	-2,819.7	430.8	374.2	56.53	7.619		
8,600.0	7,200.0	8,392.1	6,870.0	54.5	60.6	-39.79	517.4	-2,819.9	430.8	372.7	58.04	7.422		

CC - Min centre to center distance or convergent point, SF - min separation factor, ES - min ellipse separation

Company:	Synergy Resources	Local Co-ordinate Reference:	Well SRC Evans G-26-23-14CHZ
Project:	SEC.26-T5N-R66W	TVD Reference:	WELL @ 4754.0ft (RKB - 13')
Reference Site:	SRC Evans West Pad Sec.26-T5N-R66W	MD Reference:	WELL @ 4754.0ft (RKB - 13')
Site Error:	0.0ft	North Reference:	True
Reference Well:	SRC Evans G-26-23-14CHZ	Survey Calculation Method:	Minimum Curvature
Well Error:	0.0ft	Output errors are at	2.00 sigma
Reference Wellbore	Wellbore #1	Database:	Landmark
Reference Design:	Plan #1 (10-20-14)	Offset TVD Reference:	Offset Datum

Offset Design													Offset Site Error:	0.0 ft
Survey Program: 0-MWDD													Offset Well Error:	0.0 ft
Reference		Offset		Semi Major Axis			Distance							Warning
Measured Depth (ft)	Vertical Depth (ft)	Measured Depth (ft)	Vertical Depth (ft)	Reference (ft)	Offset (ft)	Highside Toolface (°)	Offset Wellbore Centre +N/-S (ft)	+E/-W (ft)	Between Centres (ft)	Between Ellipses (ft)	Minimum Separation (ft)	Separation Factor		
8,700.0	7,200.0	8,492.1	6,870.0	54.7	60.7	-39.79	617.4	-2,820.0	430.8	371.1	59.63	7.224		
8,800.0	7,200.0	8,592.1	6,870.0	55.0	61.0	-39.79	717.4	-2,820.1	430.8	369.5	61.30	7.028		
8,900.0	7,200.0	8,692.1	6,870.0	55.3	61.3	-39.80	817.4	-2,820.2	430.8	367.8	63.04	6.834		
9,000.0	7,200.0	8,792.1	6,870.0	55.7	61.6	-39.80	917.4	-2,820.4	430.8	366.0	64.85	6.644		
9,100.0	7,200.0	8,892.1	6,870.0	56.2	62.0	-39.80	1,017.4	-2,820.5	430.8	364.1	66.71	6.458		
9,200.0	7,200.0	8,992.1	6,870.0	56.7	62.4	-39.80	1,117.4	-2,820.6	430.8	362.2	68.64	6.277		
9,300.0	7,200.0	9,092.1	6,870.0	57.3	62.9	-39.80	1,217.4	-2,820.7	430.8	360.2	70.61	6.102		
9,400.0	7,200.0	9,192.1	6,870.0	58.0	63.5	-39.80	1,317.4	-2,820.8	430.9	358.2	72.63	5.932		
9,500.0	7,200.0	9,292.1	6,870.0	58.7	64.1	-39.81	1,417.4	-2,821.0	430.9	356.2	74.70	5.768		
9,600.0	7,200.0	9,392.1	6,870.0	59.5	64.8	-39.81	1,517.4	-2,821.1	430.9	354.1	76.80	5.610		
9,700.0	7,200.0	9,492.1	6,870.0	60.4	65.5	-39.81	1,617.4	-2,821.2	430.9	351.9	78.94	5.458		
9,800.0	7,200.0	9,592.1	6,870.0	61.3	66.3	-39.81	1,717.4	-2,821.3	430.9	349.8	81.12	5.312		
9,900.0	7,200.0	9,692.1	6,870.0	62.3	67.1	-39.81	1,817.4	-2,821.5	430.9	347.6	83.32	5.171		
10,000.0	7,200.0	9,792.1	6,870.0	63.3	68.0	-39.81	1,917.4	-2,821.6	430.9	345.4	85.56	5.037		
10,100.0	7,200.0	9,892.1	6,870.0	64.4	68.9	-39.82	2,017.4	-2,821.7	430.9	343.1	87.82	4.907		
10,200.0	7,200.0	9,992.1	6,870.0	65.5	69.9	-39.82	2,117.4	-2,821.8	430.9	340.8	90.11	4.783		
10,300.0	7,200.0	10,092.1	6,870.0	66.7	70.9	-39.82	2,217.4	-2,821.9	431.0	338.5	92.42	4.663		
10,400.0	7,200.0	10,192.1	6,870.0	67.9	72.0	-39.82	2,317.4	-2,822.1	431.0	336.2	94.75	4.549		
10,500.0	7,200.0	10,292.1	6,870.0	69.1	73.1	-39.82	2,417.4	-2,822.2	431.0	333.9	97.10	4.439		
10,600.0	7,200.0	10,392.1	6,870.0	70.4	74.3	-39.83	2,517.4	-2,822.3	431.0	331.5	99.46	4.333		
10,700.0	7,200.0	10,492.1	6,870.0	71.8	75.5	-39.83	2,617.4	-2,822.4	431.0	329.2	101.85	4.232		
10,800.0	7,200.0	10,592.1	6,870.0	73.1	76.7	-39.83	2,717.4	-2,822.6	431.0	326.8	104.25	4.134		
10,900.0	7,200.0	10,692.1	6,870.0	74.5	78.0	-39.83	2,817.4	-2,822.7	431.0	324.4	106.66	4.041		
11,000.0	7,200.0	10,792.1	6,870.0	75.9	79.3	-39.83	2,917.4	-2,822.8	431.0	321.9	109.09	3.951		
11,100.0	7,200.0	10,892.1	6,870.0	77.4	80.7	-39.83	3,017.4	-2,822.9	431.0	319.5	111.53	3.865		
11,200.0	7,200.0	10,992.1	6,870.0	78.8	82.0	-39.84	3,117.4	-2,823.0	431.1	317.1	113.99	3.782		
11,300.0	7,200.0	11,092.1	6,870.0	80.3	83.4	-39.84	3,217.4	-2,823.2	431.1	314.6	116.45	3.702		
11,400.0	7,200.0	11,192.1	6,870.0	81.8	84.8	-39.84	3,317.4	-2,823.3	431.1	312.2	118.93	3.625		
11,500.0	7,200.0	11,292.1	6,870.0	83.4	86.3	-39.84	3,417.4	-2,823.4	431.1	309.7	121.41	3.551		
11,600.0	7,200.0	11,392.1	6,870.0	84.9	87.7	-39.84	3,517.4	-2,823.5	431.1	307.2	123.91	3.479		
11,700.0	7,200.0	11,492.1	6,870.0	86.5	89.2	-39.85	3,617.4	-2,823.7	431.1	304.7	126.41	3.410		
11,800.0	7,200.0	11,592.1	6,870.0	88.1	90.7	-39.85	3,717.4	-2,823.8	431.1	302.2	128.93	3.344		
11,900.0	7,200.0	11,692.1	6,870.0	89.7	92.3	-39.85	3,817.4	-2,823.9	431.1	299.7	131.45	3.280		
12,000.0	7,200.0	11,792.1	6,870.0	91.3	93.8	-39.85	3,917.4	-2,824.0	431.1	297.2	133.97	3.218		
12,100.0	7,200.0	11,892.1	6,870.0	92.9	95.4	-39.85	4,017.4	-2,824.1	431.2	294.6	136.51	3.158		
12,200.0	7,200.0	11,992.1	6,870.0	94.5	96.9	-39.85	4,117.4	-2,824.3	431.2	292.1	139.05	3.101		
12,300.0	7,200.0	12,092.1	6,870.0	96.2	98.5	-39.86	4,217.4	-2,824.4	431.2	289.6	141.60	3.045		
12,400.0	7,200.0	12,192.1	6,870.0	97.9	100.1	-39.86	4,317.4	-2,824.5	431.2	287.0	144.15	2.991		
12,500.0	7,200.0	12,292.1	6,870.0	99.5	101.7	-39.86	4,417.4	-2,824.6	431.2	284.5	146.71	2.939		
12,600.0	7,200.0	12,392.1	6,870.0	101.2	103.4	-39.86	4,517.4	-2,824.8	431.2	281.9	149.28	2.889		
12,700.0	7,200.0	12,492.1	6,870.0	102.9	105.0	-39.86	4,617.4	-2,824.9	431.2	279.4	151.85	2.840		
12,800.0	7,200.0	12,592.1	6,870.0	104.6	106.6	-39.86	4,717.4	-2,825.0	431.2	276.8	154.42	2.793		
12,900.0	7,200.0	12,692.1	6,870.0	106.3	108.3	-39.87	4,817.4	-2,825.1	431.2	274.2	157.00	2.747		
13,000.0	7,200.0	12,792.1	6,870.0	108.0	110.0	-39.87	4,917.4	-2,825.2	431.3	271.7	159.58	2.702		
13,100.0	7,200.0	12,892.1	6,870.0	109.7	111.6	-39.87	5,017.4	-2,825.4	431.3	269.1	162.17	2.659		
13,200.0	7,200.0	12,992.1	6,870.0	111.5	113.3	-39.87	5,117.4	-2,825.5	431.3	266.5	164.76	2.618		
13,300.0	7,200.0	13,092.1	6,870.0	113.2	115.0	-39.87	5,217.4	-2,825.6	431.3	263.9	167.36	2.577		
13,400.0	7,200.0	13,192.1	6,870.0	114.9	116.7	-39.88	5,317.4	-2,825.7	431.3	261.3	169.96	2.538		
13,500.0	7,200.0	13,292.1	6,870.0	116.7	118.4	-39.88	5,417.4	-2,825.9	431.3	258.8	172.56	2.499		
13,600.0	7,200.0	13,392.1	6,870.0	118.4	120.1	-39.88	5,517.4	-2,826.0	431.3	256.2	175.17	2.462		
13,700.0	7,200.0	13,492.1	6,870.0	120.2	121.9	-39.88	5,617.4	-2,826.1	431.3	253.6	177.78	2.426		
13,800.0	7,200.0	13,592.1	6,870.0	122.0	123.6	-39.88	5,717.4	-2,826.2	431.3	251.0	180.39	2.391		

CC - Min centre to center distance or convergent point, SF - min separation factor, ES - min ellipse separation

Company:	Synergy Resources	Local Co-ordinate Reference:	Well SRC Evans G-26-23-14CHZ
Project:	SEC.26-T5N-R66W	TVD Reference:	WELL @ 4754.0ft (RKB - 13')
Reference Site:	SRC Evans West Pad Sec.26-T5N-R66W	MD Reference:	WELL @ 4754.0ft (RKB - 13')
Site Error:	0.0ft	North Reference:	True
Reference Well:	SRC Evans G-26-23-14CHZ	Survey Calculation Method:	Minimum Curvature
Well Error:	0.0ft	Output errors are at	2.00 sigma
Reference Wellbore	Wellbore #1	Database:	Landmark
Reference Design:	Plan #1 (10-20-14)	Offset TVD Reference:	Offset Datum

Offset Design												Offset Site Error:	0.0 ft
Survey Program: 0-MWD												Offset Well Error:	0.0 ft
Reference		Offset		Semi Major Axis			Distance						Warning
Measured Depth (ft)	Vertical Depth (ft)	Measured Depth (ft)	Vertical Depth (ft)	Reference (ft)	Offset (ft)	Highside Toolface (°)	Offset Wellbore Centre +N/-S (ft)	+E/-W (ft)	Between Centres (ft)	Between Ellipses (ft)	Minimum Separation (ft)	Separation Factor	
13,900.0	7,200.0	13,692.1	6,870.0	123.7	125.3	-39.88	5,817.4	-2,826.3	431.4	248.4	183.01	2.357	
14,000.0	7,200.0	13,792.1	6,870.0	125.5	127.1	-39.89	5,917.4	-2,826.5	431.4	245.7	185.63	2.324	
14,100.0	7,200.0	13,892.1	6,870.0	127.3	128.8	-39.89	6,017.4	-2,826.6	431.4	243.1	188.25	2.292	
14,200.0	7,200.0	13,992.1	6,870.0	129.1	130.6	-39.89	6,117.4	-2,826.7	431.4	240.5	190.87	2.260	
14,300.0	7,200.0	14,092.1	6,870.0	130.8	132.3	-39.89	6,217.4	-2,826.8	431.4	237.9	193.50	2.229	
14,400.0	7,200.0	14,192.1	6,870.0	132.6	134.1	-39.89	6,317.4	-2,827.0	431.4	235.3	196.13	2.200	
14,500.0	7,200.0	14,292.1	6,870.0	134.4	135.8	-39.89	6,417.4	-2,827.1	431.4	232.7	198.76	2.171	
14,600.0	7,200.0	14,392.1	6,870.0	136.2	137.6	-39.90	6,517.4	-2,827.2	431.4	230.0	201.39	2.142	
14,700.0	7,200.0	14,492.1	6,870.0	138.0	139.4	-39.90	6,617.4	-2,827.3	431.4	227.4	204.03	2.115	
14,800.0	7,200.0	14,592.1	6,870.0	139.8	141.2	-39.90	6,717.4	-2,827.4	431.5	224.8	206.67	2.088	
14,900.0	7,200.0	14,692.1	6,870.0	141.6	142.9	-39.90	6,817.4	-2,827.6	431.5	222.2	209.31	2.061	
15,000.0	7,200.0	14,792.1	6,870.0	143.5	144.7	-39.90	6,917.4	-2,827.7	431.5	219.5	211.95	2.036	
15,100.0	7,200.0	14,892.1	6,870.0	145.3	146.5	-39.91	7,017.4	-2,827.8	431.5	216.9	214.59	2.011	
15,200.0	7,200.0	14,992.1	6,870.0	147.1	148.3	-39.91	7,117.4	-2,827.9	431.5	214.3	217.24	1.986	
15,300.0	7,200.0	15,092.1	6,870.0	148.9	150.1	-39.91	7,217.4	-2,828.1	431.5	211.6	219.88	1.962	
15,400.0	7,200.0	15,192.1	6,870.0	150.7	151.9	-39.91	7,317.4	-2,828.2	431.5	209.0	222.53	1.939	
15,500.0	7,200.0	15,292.1	6,870.0	152.5	153.7	-39.91	7,417.4	-2,828.3	431.5	206.4	225.18	1.916	
15,600.0	7,200.0	15,392.1	6,870.0	154.4	155.5	-39.91	7,517.4	-2,828.4	431.6	203.7	227.84	1.894	
15,700.0	7,200.0	15,492.1	6,870.0	156.2	157.3	-39.92	7,617.4	-2,828.5	431.6	201.1	230.49	1.872	
15,800.0	7,200.0	15,592.1	6,870.0	158.0	159.1	-39.92	7,717.4	-2,828.7	431.6	198.4	233.15	1.851	
15,900.0	7,200.0	15,692.1	6,870.0	159.9	160.9	-39.92	7,817.4	-2,828.8	431.6	195.8	235.80	1.830	
16,000.0	7,200.0	15,792.1	6,870.0	161.7	162.8	-39.92	7,917.4	-2,828.9	431.6	193.1	238.46	1.810	
16,100.0	7,200.0	15,892.1	6,870.0	163.5	164.6	-39.92	8,017.4	-2,829.0	431.6	190.5	241.12	1.790	
16,200.0	7,200.0	15,992.1	6,870.0	165.4	166.4	-39.93	8,117.4	-2,829.2	431.6	187.8	243.78	1.771	
16,300.0	7,200.0	16,092.1	6,870.0	167.2	168.2	-39.93	8,217.4	-2,829.3	431.6	185.2	246.44	1.751	
16,400.0	7,200.0	16,192.1	6,870.0	169.0	170.1	-39.93	8,317.4	-2,829.4	431.6	182.5	249.11	1.733	
16,500.0	7,200.0	16,292.1	6,870.0	170.9	171.9	-39.93	8,417.4	-2,829.5	431.7	179.9	251.77	1.714	
16,600.0	7,200.0	16,392.1	6,870.0	172.7	173.7	-39.93	8,517.4	-2,829.6	431.7	177.2	254.44	1.697	
16,700.0	7,200.0	16,492.1	6,870.0	174.6	175.5	-39.93	8,617.4	-2,829.8	431.7	174.6	257.10	1.679	
16,800.0	7,200.0	16,592.1	6,870.0	176.4	177.4	-39.94	8,717.4	-2,829.9	431.7	171.9	259.77	1.662	
16,900.0	7,200.0	16,692.1	6,870.0	178.3	179.2	-39.94	8,817.4	-2,830.0	431.7	169.3	262.44	1.645	
17,000.0	7,200.0	16,792.1	6,870.0	180.1	181.0	-39.94	8,917.4	-2,830.1	431.7	166.6	265.11	1.628	
17,100.0	7,200.0	16,892.1	6,870.0	182.0	182.9	-39.94	9,017.4	-2,830.3	431.7	163.9	267.78	1.612	
17,200.0	7,200.0	16,992.1	6,870.0	183.8	184.7	-39.94	9,117.4	-2,830.4	431.7	161.3	270.45	1.596	
17,300.0	7,200.0	17,092.1	6,870.0	185.7	186.6	-39.94	9,217.4	-2,830.5	431.7	158.6	273.13	1.581	
17,400.0	7,200.0	17,192.1	6,870.0	187.6	188.4	-39.95	9,317.4	-2,830.6	431.8	156.0	275.80	1.565	
17,486.1	7,200.0	17,278.2	6,870.0	189.2	190.0	-39.95	9,403.4	-2,830.7	431.8	153.7	278.10	1.553 SF	

SRC Evans West Pad Sec.26-T5N-R66W - SRC Evans K-26-23-14CHZ - Wellbore #1 - Plan #1 (10-20)													Offset Site Error:	0.0 ft
Survey Program: 0-MWD													Offset Well Error:	0.0 ft
Reference		Offset		Semi Major Axis			Distance							Warning
Measured Depth (ft)	Vertical Depth (ft)	Measured Depth (ft)	Vertical Depth (ft)	Reference (ft)	Offset (ft)	Highside Toolface (°)	Offset Wellbore Centre +N/-S (ft)	+E/-W (ft)	Between Centres (ft)	Between Ellipses (ft)	Minimum Separation (ft)	Separation Factor		
0.0	0.0	0.0	0.0	0.0	0.0	179.88	-134.8	0.3	134.8					
100.0	100.0	98.0	98.0	0.1	0.1	179.88	-134.8	0.3	134.8	134.6	0.22	605.760		
200.0	200.0	198.0	198.0	0.3	0.3	179.88	-134.8	0.3	134.8	134.1	0.67	201.246		
300.0	300.0	298.0	298.0	0.6	0.6	179.88	-134.8	0.3	134.8	133.7	1.12	120.424		
400.0	400.0	398.0	398.0	0.8	0.8	179.88	-134.8	0.3	134.8	133.2	1.57	85.919		
500.0	500.0	498.0	498.0	1.0	1.0	-74.35	-134.8	0.3	134.3	132.3	2.00	67.056		
600.0	599.8	597.8	597.8	1.2	1.2	-76.55	-134.8	0.3	133.0	130.6	2.44	54.598		
700.0	699.5	697.5	697.5	1.4	1.5	-80.27	-134.8	0.3	131.2	128.3	2.89	45.357		
800.0	798.7	796.7	796.7	1.7	1.7	-85.57	-134.8	0.3	129.7	126.3	3.39	38.313		
867.1	865.0	863.0	863.0	1.9	1.8	-90.00	-134.8	0.3	129.3	125.6	3.75	34.528 CC		
900.0	897.5	895.5	895.5	2.0	1.9	-92.41	-134.8	0.3	129.4	125.5	3.92	33.002 ES		
1,000.0	995.6	993.6	993.6	2.4	2.1	-100.55	-134.8	0.3	131.7	127.1	4.50	29.238		
1,100.0	1,093.1	1,091.1	1,091.1	2.8	2.3	-109.46	-134.8	0.3	137.6	132.5	5.11	26.931		
1,200.0	1,189.6	1,187.6	1,187.6	3.3	2.6	-118.48	-134.8	0.3	148.5	142.8	5.72	25.966 SF		
1,300.0	1,285.3	1,283.3	1,283.3	3.9	2.8	-126.93	-134.8	0.3	164.9	158.5	6.30	26.152		
1,400.0	1,379.8	1,377.8	1,377.8	4.5	3.0	-134.40	-134.8	0.3	186.8	179.9	6.85	27.256		
1,500.0	1,473.2	1,471.2	1,471.2	5.2	3.2	-140.73	-134.8	0.3	214.1	206.7	7.37	29.046		
1,555.5	1,524.4	1,522.4	1,522.4	5.6	3.3	-143.77	-134.8	0.3	231.4	223.8	7.65	30.263		
1,600.0	1,565.4	1,563.4	1,563.4	6.0	3.4	-146.11	-134.8	0.3	246.1	238.2	7.87	31.277		
1,700.0	1,657.3	1,659.3	1,659.3	6.8	3.6	-150.58	-135.2	-0.2	279.9	271.5	8.35	33.524		
1,800.0	1,749.3	1,760.0	1,759.9	7.6	3.8	-153.80	-137.4	-3.4	312.6	303.8	8.82	35.428		
1,900.0	1,841.3	1,863.1	1,862.7	8.4	4.0	-156.02	-141.8	-9.5	343.5	334.2	9.32	36.841		
2,000.0	1,933.3	1,968.5	1,967.5	9.2	4.2	-157.48	-148.6	-19.0	372.1	362.2	9.87	37.717		
2,100.0	2,025.2	2,076.0	2,073.8	10.1	4.5	-158.36	-157.8	-31.8	398.1	387.6	10.45	38.081		
2,200.0	2,117.2	2,185.0	2,180.9	10.9	4.8	-158.78	-169.5	-48.1	421.3	410.2	11.09	37.976		
2,300.0	2,209.2	2,282.6	2,276.5	11.7	5.0	-158.95	-180.9	-64.1	443.2	431.4	11.75	37.702		
2,400.0	2,301.2	2,380.1	2,372.0	12.6	5.4	-159.12	-192.4	-80.2	465.0	452.6	12.43	37.415		
2,500.0	2,393.1	2,477.7	2,467.6	13.4	5.7	-159.26	-203.9	-96.2	486.9	473.8	13.11	37.132		
2,600.0	2,485.1	2,575.3	2,563.2	14.2	6.0	-159.40	-215.4	-112.2	508.8	495.0	13.81	36.846		
2,700.0	2,577.1	2,672.8	2,658.7	15.1	6.4	-159.52	-226.9	-128.3	530.7	516.1	14.51	36.569		
2,800.0	2,669.1	2,770.4	2,754.3	15.9	6.8	-159.64	-238.4	-144.3	552.5	537.3	15.22	36.302		
2,900.0	2,761.0	2,868.0	2,849.8	16.7	7.1	-159.74	-249.9	-160.3	574.4	558.5	15.94	36.046		
3,000.0	2,853.0	2,965.6	2,945.4	17.6	7.5	-159.84	-261.3	-176.4	596.3	579.6	16.66	35.801		
3,100.0	2,945.0	3,063.1	3,040.9	18.4	7.9	-159.93	-272.8	-192.4	618.2	600.8	17.38	35.568		
3,200.0	3,037.0	3,160.7	3,136.5	19.3	8.3	-160.01	-284.3	-208.4	640.0	621.9	18.11	35.346		
3,300.0	3,128.9	3,258.3	3,232.1	20.1	8.7	-160.09	-295.8	-224.5	661.9	643.1	18.84	35.136		
3,400.0	3,220.9	3,355.9	3,327.6	21.0	9.1	-160.17	-307.3	-240.5	683.8	664.2	19.57	34.936		
3,500.0	3,312.9	3,453.4	3,423.2	21.8	9.5	-160.23	-318.8	-256.5	705.7	685.4	20.31	34.746		
3,600.0	3,404.9	3,551.0	3,518.7	22.6	9.9	-160.30	-330.3	-272.6	727.6	706.5	21.05	34.566		
3,700.0	3,496.8	3,648.6	3,614.3	23.5	10.3	-160.36	-341.8	-288.6	749.5	727.7	21.79	34.395		
3,800.0	3,588.8	3,746.1	3,709.9	24.3	10.8	-160.42	-353.2	-304.7	771.3	748.8	22.53	34.233		
3,900.0	3,680.8	3,843.7	3,805.4	25.2	11.2	-160.47	-364.7	-320.7	793.2	770.0	23.28	34.079		

Company:	Synergy Resources	Local Co-ordinate Reference:	Well SRC Evans G-26-23-14CHZ
Project:	SEC.26-T5N-R66W	TVD Reference:	WELL @ 4754.0ft (RKB - 13')
Reference Site:	SRC Evans West Pad Sec.26-T5N-R66W	MD Reference:	WELL @ 4754.0ft (RKB - 13')
Site Error:	0.0ft	North Reference:	True
Reference Well:	SRC Evans G-26-23-14CHZ	Survey Calculation Method:	Minimum Curvature
Well Error:	0.0ft	Output errors are at	2.00 sigma
Reference Wellbore	Wellbore #1	Database:	Landmark
Reference Design:	Plan #1 (10-20-14)	Offset TVD Reference:	Offset Datum

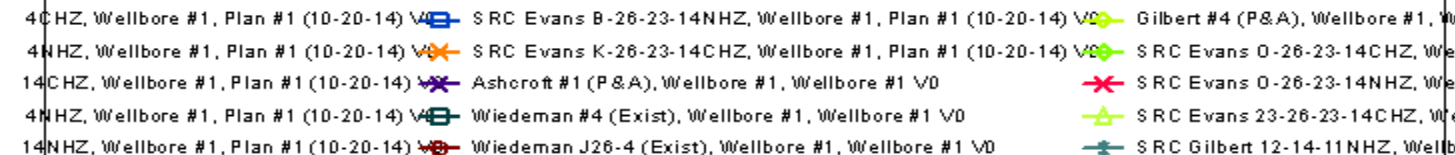
Offset Design													Offset Site Error:	0.0 ft
Survey Program: 0-MWD													Offset Well Error:	0.0 ft
Reference		Offset		Semi Major Axis			Distance							Warning
Measured Depth (ft)	Vertical Depth (ft)	Measured Depth (ft)	Vertical Depth (ft)	Reference (ft)	Offset (ft)	Highside Toolface (°)	Offset Wellbore Centre +N/-S (ft)	+E/-W (ft)	Between Centres (ft)	Between Ellipses (ft)	Minimum Separation (ft)	Separation Factor		
0.0	0.0	0.0	0.0	0.0	0.0	179.86	-112.6	0.3	112.6					
100.0	100.0	98.0	98.0	0.1	0.1	179.86	-112.6	0.3	112.6	112.3	0.22	505.892		
200.0	200.0	198.0	198.0	0.3	0.3	179.86	-112.6	0.3	112.6	111.9	0.67	168.068		
300.0	300.0	298.0	298.0	0.6	0.6	179.86	-112.6	0.3	112.6	111.5	1.12	100.571		
400.0	400.0	398.0	398.0	0.8	0.8	179.86	-112.6	0.3	112.6	111.0	1.57	71.754		
500.0	500.0	498.0	498.0	1.0	1.0	-74.52	-112.6	0.3	112.1	110.1	2.00	55.963		
600.0	599.8	597.8	597.8	1.2	1.2	-77.15	-112.6	0.3	110.8	108.4	2.44	45.490		
700.0	699.5	697.5	697.5	1.4	1.5	-81.63	-112.6	0.3	109.2	106.3	2.89	37.738		
800.0	798.7	796.7	796.7	1.7	1.7	-88.00	-112.6	0.3	108.1	104.7	3.39	31.919		
826.4	824.8	822.8	822.8	1.8	1.7	-90.00	-112.6	0.3	108.0	104.5	3.53	30.620 CC, ES		
900.0	897.5	895.5	895.5	2.0	1.9	-96.16	-112.6	0.3	108.7	104.7	3.92	27.712		
1,000.0	995.6	993.6	993.6	2.4	2.1	-105.64	-112.6	0.3	112.4	107.9	4.49	25.010		
1,100.0	1,093.1	1,091.1	1,091.1	2.8	2.3	-115.63	-112.6	0.3	120.5	115.4	5.08	23.738		
1,200.0	1,189.6	1,187.6	1,187.6	3.3	2.6	-125.21	-112.6	0.3	134.0	128.4	5.65	23.736 SF		
1,300.0	1,285.3	1,283.3	1,283.3	3.9	2.8	-133.70	-112.6	0.3	153.1	146.9	6.18	24.766		
1,400.0	1,379.8	1,377.8	1,377.8	4.5	3.0	-140.83	-112.6	0.3	177.7	171.0	6.69	26.565		
1,500.0	1,473.2	1,475.0	1,475.0	5.2	3.2	-146.67	-113.1	-0.6	206.6	199.5	7.16	28.856		
1,555.5	1,524.4	1,530.0	1,529.9	5.6	3.3	-149.24	-114.0	-2.3	223.7	216.3	7.41	30.166		
1,600.0	1,565.4	1,574.4	1,574.3	6.0	3.4	-151.11	-115.2	-4.3	237.4	229.8	7.63	31.135		
1,700.0	1,657.3	1,676.1	1,675.6	6.8	3.6	-154.28	-119.2	-11.3	267.0	258.9	8.12	32.883		
1,800.0	1,749.3	1,780.0	1,778.9	7.6	3.8	-156.40	-125.0	-21.6	294.4	285.7	8.65	34.027		
1,900.0	1,841.3	1,885.9	1,883.6	8.4	4.1	-157.77	-132.9	-35.4	319.1	309.9	9.22	34.593		
2,000.0	1,933.3	1,993.7	1,989.5	9.2	4.4	-158.56	-142.9	-53.0	340.9	331.1	9.85	34.627		
2,100.0	2,025.2	2,103.0	2,096.0	10.1	4.7	-158.89	-155.1	-74.3	359.7	349.2	10.52	34.179		
2,200.0	2,117.2	2,205.3	2,194.9	10.9	5.1	-158.91	-167.9	-96.7	376.1	364.9	11.24	33.461		
2,300.0	2,209.2	2,304.0	2,290.4	11.7	5.5	-158.92	-180.3	-118.5	392.4	380.4	11.97	32.785		
2,400.0	2,301.2	2,402.6	2,385.8	12.6	6.0	-158.92	-192.8	-140.4	408.6	395.9	12.71	32.147		
2,500.0	2,393.1	2,501.3	2,481.2	13.4	6.4	-158.93	-205.2	-162.2	424.8	411.4	13.47	31.551		
2,600.0	2,485.1	2,600.0	2,576.6	14.2	6.9	-158.93	-217.6	-184.0	441.1	426.8	14.23	30.996		
2,700.0	2,577.1	2,698.7	2,672.1	15.1	7.3	-158.93	-230.1	-205.8	457.3	442.3	15.00	30.481		
2,800.0	2,669.1	2,797.3	2,767.5	15.9	7.8	-158.94	-242.5	-227.6	473.6	457.8	15.78	30.002		
2,900.0	2,761.0	2,896.0	2,862.9	16.7	8.3	-158.94	-255.0	-249.5	489.8	473.2	16.57	29.558		
3,000.0	2,853.0	2,994.7	2,958.3	17.6	8.8	-158.94	-267.4	-271.3	506.0	488.7	17.36	29.145		
3,100.0	2,945.0	3,093.3	3,053.7	18.4	9.3	-158.94	-279.8	-293.1	522.3	504.1	18.16	28.761		
3,200.0	3,037.0	3,192.0	3,149.2	19.3	9.8	-158.95	-292.3	-314.9	538.5	519.6	18.96	28.404		
3,300.0	3,128.9	3,290.7	3,244.6	20.1	10.3	-158.95	-304.7	-336.7	554.7	535.0	19.76	28.070		
3,400.0	3,220.9	3,389.4	3,340.0	21.0	10.8	-158.95	-317.2	-358.6	571.0	550.4	20.57	27.758		
3,500.0	3,312.9	3,488.0	3,435.4	21.8	11.4	-158.95	-329.6	-380.4	587.2	565.8	21.38	27.467		
3,600.0	3,404.9	3,586.7	3,530.9	22.6	11.9	-158.96	-342.0	-402.2	603.5	581.3	22.19	27.193		
3,700.0	3,496.8	3,685.4	3,626.3	23.5	12.4	-158.96	-354.5	-424.0	619.7	596.7	23.01	26.937		
3,800.0	3,588.8	3,784.1	3,721.7	24.3	12.9	-158.96	-366.9	-445.8	635.9	612.1	23.82	26.696		
3,900.0	3,680.8	3,882.7	3,817.1	25.2	13.4	-158.96	-379.4	-467.7	652.2	627.5	24.64	26.469		
4,000.0	3,772.8	3,981.4	3,912.5	26.0	14.0	-158.96	-391.8	-489.5	668.4	643.0	25.46	26.255		
4,100.0	3,864.7	4,080.1	4,008.0	26.9	14.5	-158.96	-404.2	-511.3	684.7	658.4	26.28	26.053		
4,200.0	3,956.7	4,178.7	4,103.4	27.7	15.0	-158.97	-416.7	-533.1	700.9	673.8	27.10	25.862		
4,300.0	4,048.7	4,277.4	4,198.8	28.6	15.6	-158.97	-429.1	-554.9	717.1	689.2	27.92	25.682		
4,400.0	4,140.7	4,376.1	4,294.2	29.4	16.1	-158.97	-441.6	-576.8	733.4	704.6	28.75	25.511		
4,500.0	4,232.6	4,474.8	4,389.7	30.2	16.6	-158.97	-454.0	-598.6	749.6	720.0	29.57	25.348		
4,600.0	4,324.6	4,573.4	4,485.1	31.1	17.2	-158.97	-466.4	-620.4	765.9	735.5	30.40	25.194		
4,700.0	4,416.6	4,672.1	4,580.5	31.9	17.7	-158.97	-478.9	-642.2	782.1	750.9	31.23	25.047		
4,800.0	4,508.6	4,770.8	4,675.9	32.8	18.2	-158.97	-491.3	-664.1	798.3	766.3	32.05	24.907		

Company:	Synergy Resources	Local Co-ordinate Reference:	Well SRC Evans G-26-23-14CHZ
Project:	SEC.26-T5N-R66W	TVD Reference:	WELL @ 4754.0ft (RKB - 13')
Reference Site:	SRC Evans West Pad Sec.26-T5N-R66W	MD Reference:	WELL @ 4754.0ft (RKB - 13')
Site Error:	0.0ft	North Reference:	True
Reference Well:	SRC Evans G-26-23-14CHZ	Survey Calculation Method:	Minimum Curvature
Well Error:	0.0ft	Output errors are at	2.00 sigma
Reference Wellbore	Wellbore #1	Database:	Landmark
Reference Design:	Plan #1 (10-20-14)	Offset TVD Reference:	Offset Datum

Offset Design												Offset Site Error:	0.0 ft
Survey Program: 0-MWD												Offset Well Error:	0.0 ft
Reference		Offset		Semi Major Axis		Distance							
Measured Depth (ft)	Vertical Depth (ft)	Measured Depth (ft)	Vertical Depth (ft)	Reference (ft)	Offset (ft)	Highside Toolface (°)	Offset Wellbore Centre +N/-S (ft)	+E/-W (ft)	Between Centres (ft)	Between Ellipses (ft)	Minimum Separation (ft)	Separation Factor	Warning
17,486.1	7,200.0	7,687.3	6,933.6	189.2	63.2	46.16	10,005.4	-2,177.8	796.1	644.4	151.70	5.248	CC, ES, SF

Reference Depths are relative to WELL @ 4754.0ft (RKB - 13')
Offset Depths are relative to Offset Datum
Central Meridian is -105.500000 °

Coordinates are relative to: SRC Evans G-26-23-14CHZ
Coordinate System is US State Plane 1983, Colorado Northern Zone
Grid Convergence at Surface is: 0.49°



Company:	Synergy Resources	Local Co-ordinate Reference:	Well SRC Evans G-26-23-14CHZ
Project:	SEC.26-T5N-R66W	TVD Reference:	WELL @ 4754.0ft (RKB - 13')
Reference Site:	SRC Evans West Pad Sec.26-T5N-R66W	MD Reference:	WELL @ 4754.0ft (RKB - 13')
Site Error:	0.0ft	North Reference:	True
Reference Well:	SRC Evans G-26-23-14CHZ	Survey Calculation Method:	Minimum Curvature
Well Error:	0.0ft	Output errors are at	2.00 sigma
Reference Wellbore	Wellbore #1	Database:	Landmark
Reference Design:	Plan #1 (10-20-14)	Offset TVD Reference:	Offset Datum

Reference Depths are relative to WELL @ 4754.0ft (RKB - 13')

Offset Depths are relative to Offset Datum

Central Meridian is -105.500000 °

Coordinates are relative to: SRC Evans G-26-23-14CHZ

Coordinate System is US State Plane 1983, Colorado Northern Zone

Grid Convergence at Surface is: 0.49°

