

WPX Energy Rocky Mountain LLC – EBUS

AP 523-17-695

**Nabors 573**

## **Post Job Summary**

# **Cement Surface Casing**

Date Prepared: 10/07/2014

Job Date: 09/05/2014

Submitted by: Patrick Ealey – Grand Junction Cement Engineer

### The Road to Excellence Starts with Safety

Sold To #: 300721	Ship To #: 3123281	Quote #:	Sales Order #: 0901638494
Customer: WPX ENERGY ROCKY MOUNTAIN LLC-EBUS		Customer Rep: HARRY SAMSON	
Well Name: AP		Well #: 523-17-695	API/UWI #: 05-045-21379-00
Field: PARACHUTE	City (SAP): PARACHUTE	County/Parish: GARFIELD	State: COLORADO
Legal Description: NE NW-20-6S-95W-32FNL-2488FWL			
Contractor:		Rig/Platform Name/Num: Nabors 573	
Job BOM: 7521			
Well Type: DIRECTIONAL GAS			
Sales Person: HALAMERICA\HX23209		Srvc Supervisor: Eric Carter	
Job			

Formation Name	
Formation Depth (MD)	Top 0 FT. Bottom 2547 FT.
Form Type	BHST
Job depth MD	2592ft Job Depth TVD 2592 FT.
Water Depth	Wk Ht Above Floor 5 FT.
Perforation Depth (MD)	From To

Well Data										
Description	New / Used	Size in	ID in	Weight lbm/ft	Thread	Grade	Top MD ft	Bottom MD ft	Top TVD ft	Bottom TVD ft
Casing	3	9.625	9.001	32.3	8 RD	J-55	0	45	0	0
Casing	0	9.625	9.001	32.3	8 RD	J-55	0	2547	0	0
Open Hole Section			13.5				0	2547	0	0

Tools and Accessories									
Type	Size in	Qty	Make	Depth ft		Type	Size in	Qty	Make
Guide Shoe						Top Plug	9.625	1	HES
Float Shoe						Bottom Plug			
Float Collar						SSR plug set			
Insert Float						Plug Container	9.625	1	HES
Stage Tool						Centralizers			

Miscellaneous Materials											
Gelling Agt		Conc		Surfactant		Conc		Acid Type		Qty	Conc
Treatment Fld		Conc		Inhibitor		Conc		Sand Type		Size	Qty

Fluid Data										
Stage/Plug #: 1										
Fluid #	Stage Type	Fluid Name	Qty	Qty UoM	Mixing Density lbm/gal	Yield ft3/sack	Mix Fluid Gal	Rate bbl/min	Total Mix Fluid Gal	
1	Fresh Water	Fresh Water	20	bbl	8.34			4		
Fluid #	Stage Type	Fluid Name	Qty	Qty UoM	Mixing Density lbm/gal	Yield ft3/sack	Mix Fluid Gal	Rate bbl/min	Total Mix Fluid Gal	
2	VariCem GJ1	VARICEM (TM) CEMENT	415	sack	12.3	2.38	13.77	8		

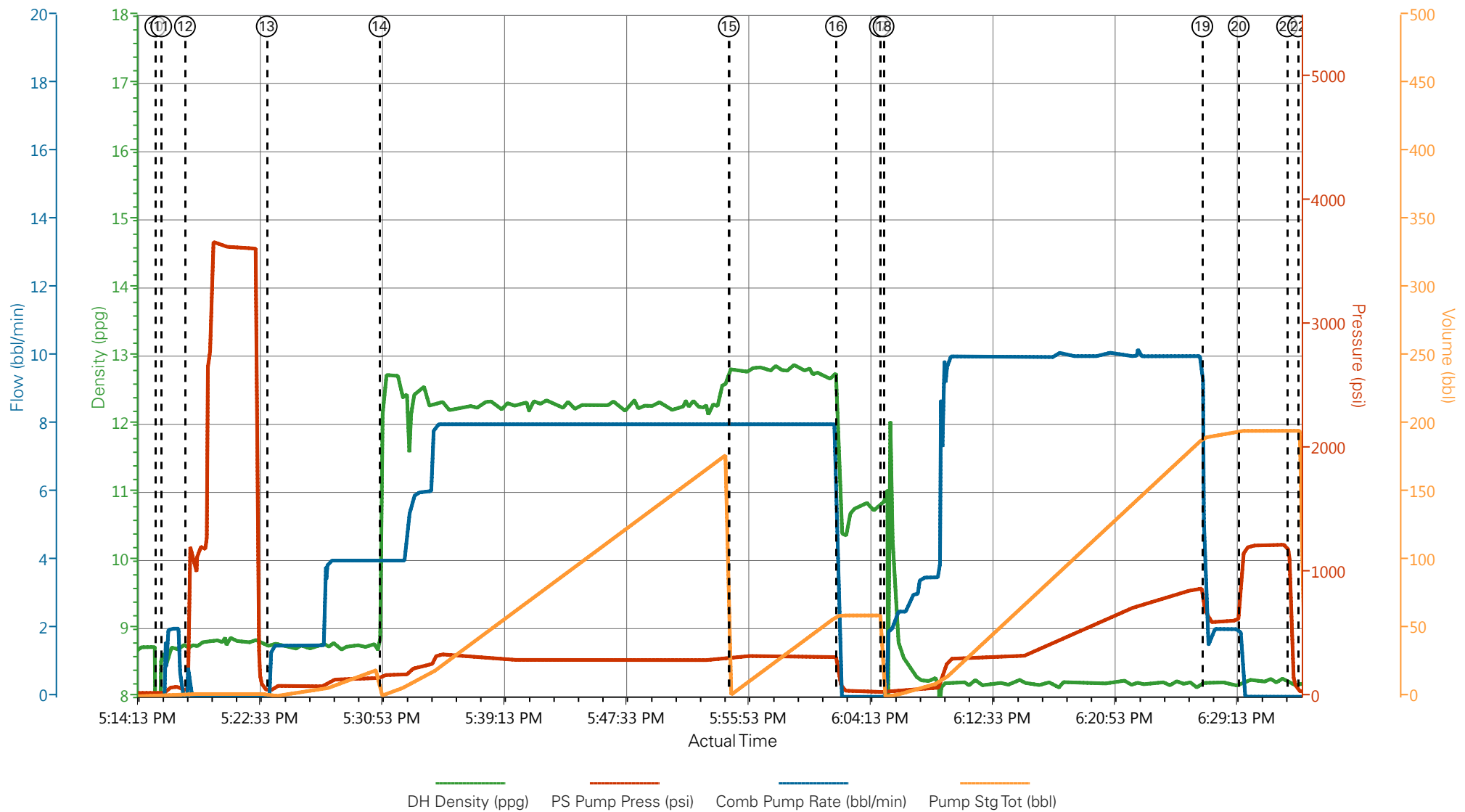
13.70 Gal		FRESH WATER							
0.25 lbm		POLY-E-FLAKE (101216940)							
Fluid #	Stage Type	Fluid Name	Qty	Qty UoM	Mixing Density lbm/gal	Yield ft3/sack	Mix Fluid Gal	Rate bbl/min	Total Mix Fluid Gal
3	VariCem GJ1	VARICEM (TM) CEMENT	165	sack	12.8	2.11	11.77	8	
0.25 lbm		POLY-E-FLAKE (101216940)							
11.71 Gal		FRESH WATER							
Fluid #	Stage Type	Fluid Name	Qty	Qty UoM	Mixing Density lbm/gal	Yield ft3/sack	Mix Fluid Gal	Rate bbl/min	Total Mix Fluid Gal
4	Fresh Water Displacement	Fresh Water Displacement	200.4	bbl	8.34			10	
Cement Left In Pipe		Amount	45 ft		Reason		Shoe Joint		
Comment									

## 3.5 Job Event Log

Type	Seq. No.	Graph Label	Date	Time	Source	DH Density (ppg)	PS Pump Press (psi)	Comb Pump Rate (bbl/min)	Pump Stg Tot (bbl)	Comment
Event	1	Call Out	9/5/2014	08:00:00	USER					
Event	2	Depart Yard Safety Meeting	9/5/2014	10:50:00	USER					ATTENDED BY ALL HES CREW
Event	3	Crew Leave Yard	9/5/2014	11:00:00	USER					
Event	4	Arrive At Loc	9/5/2014	12:00:00	USER					RIG RUNNING CASING
Event	5	Assessment Of Location Safety Meeting	9/5/2014	16:00:00	USER					ATTENDED BY ALL HES CREW
Event	6	Other	9/5/2014	16:05:00	USER					SPOT EQUIPMENT
Event	7	Pre-Rig Up Safety Meeting	9/5/2014	16:10:00	USER					ATTENDED BY ALL HES CREW
Event	8	Rig-Up Equipment	9/5/2014	16:15:00	USER					
Event	9	Pre-Job Safety Meeting	9/5/2014	16:50:00	USER					ATTENDED BY ALL HES CERW, RIG CREW AND COMPANY REP
Event	10	Start Job	9/5/2014	17:15:39	USER					TP 2592', TD 2547', MW 10.3 PPG, PV 20, YP 19, CASING 9.625", 32.3#, J-55, SJ 45', LJ 45', HOLE 13.5", RIG CIRCULATED FOR 1.5 HR'S PRIOR TO JOB
Event	11	Fill Lines	9/5/2014	17:16:03	USER	8.34	90	2	2	FRESH WATER
Event	12	Test Lines	9/5/2014	17:17:40	USER					PRESSURED UP TO 3650 PSI, PRESSURE HELD
Event	13	Pump Spacer	9/5/2014	17:23:15	USER	8.34	150	4	20	FRESH WATER
Event	14	Pump Lead Cement	9/5/2014	17:30:56	USER	12.3	350	8	175.9	415 SKS VARICEM MIXED AT 12.3 PPG, 2.38 YIELD, 13.77 GL/SK
Event	15	Pump Tail Cement	9/5/2014	17:54:47	USER	12.8	330	8	62	165 SKS VARICEM MIXED AT 12.8 PPG, 2.11 YIELD, 11.77 GL/SK
Event	16	Shutdown	9/5/2014	18:02:05	USER					
Event	17	Drop Top Plug	9/5/2014	18:05:05	USER					PLUG LAUNCHED
Event	18	Pump Displacement	9/5/2014	18:05:20	USER	8.34	850	10	190.4	FRESH WATER
Event	19	Slow Rate	9/5/2014	18:27:05	USER	8.34	620	2	10	
Event	20	Bump Plug	9/5/2014	18:29:34	USER		1210			PLUG LANDED

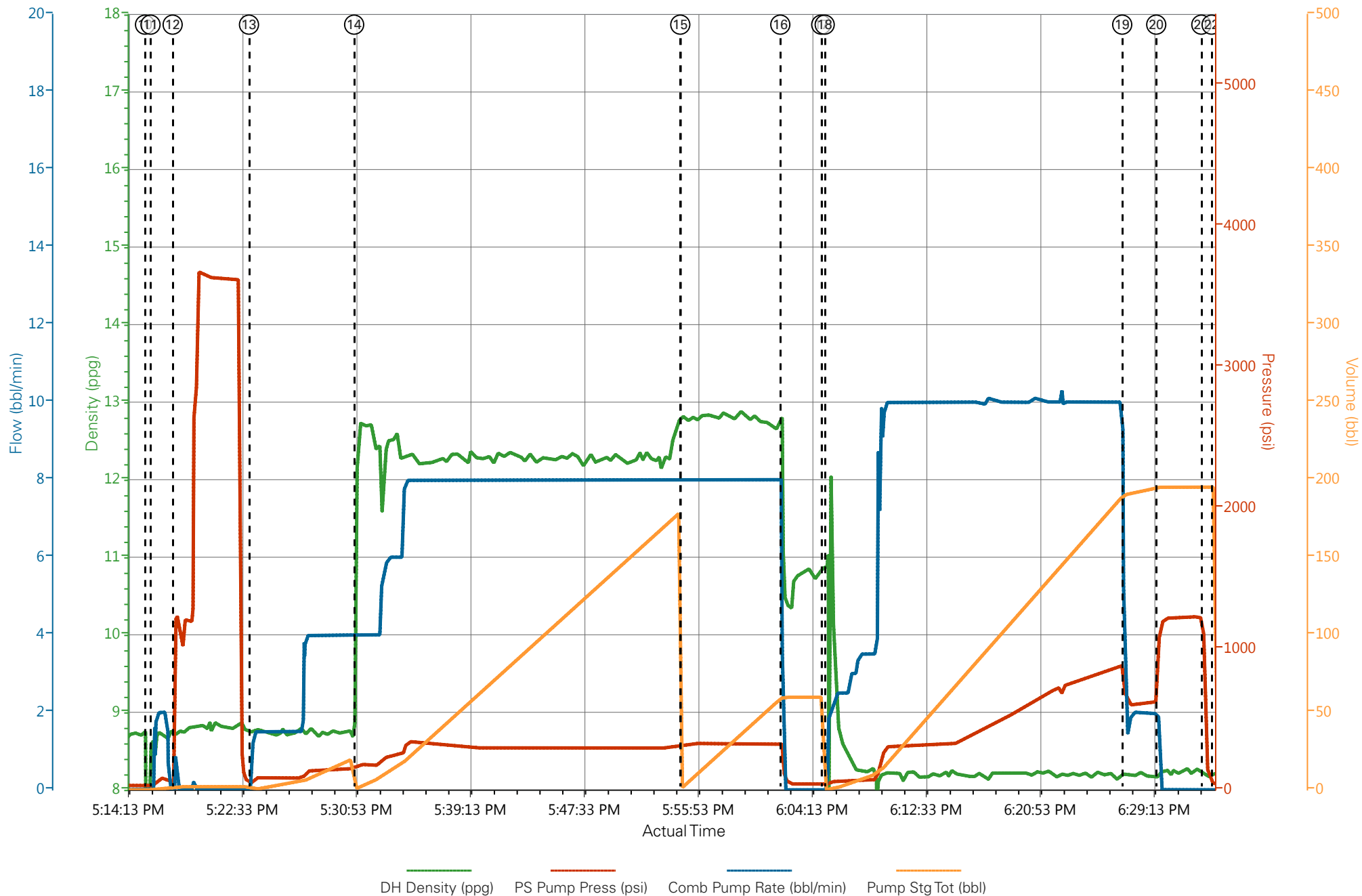
Event	21	Check Floats	9/5/2014	18:32:52	USER	FLOATS HELD
Event	22	End Job	9/5/2014	18:33:37	USER	GOOD CIRCULATION THROUGH OUT JOB, 30 BBLS CEMENT TO SURFACE, PIPE NOT MOVED DURING JOB
Event	23	Post-Job Safety Meeting (Pre Rig-Down)	9/5/2014	18:35	USER	ATTENDED BY ALL HES CREW
Event	24	Rig-Down Equipment	9/5/2014	18:40	USER	
Event	25	Depart Location Safety Meeting	9/5/2014	19:20	USER	ATTENDED BY ALL HES CREW
Event	26	Crew Leave Location	9/5/2014	19:30	USER	THANK YOU FOR USING HALLIBURTON CEMENT, ERIC CARTER AND CREW.

# WPX - AP 532-17-695 - SURFACE



- |  |   |  |                                    |                                     |
|--|---|--|------------------------------------|-------------------------------------|
| ① Call Out n/a;n/a;n/a;n/a                   | ⑤ Assessment Of Location Safety Meeting n/a;n/a;n/a;n/a | ⑨ Pre-Job Safety Meeting 8.73;58;3.8;1.1 | ⑬ Pump Spacer 8.75;48;0.8;0        | ⑰ Drop Top Plug 8.75;48;0.8;0       |
| ② Depart Yard Safety Meeting n/a;n/a;n/a;n/a | ⑥ Other n/a;n/a;n/a;n/a                                 | ⑩ Start Job 0.72;31;0;0                  | ⑭ Pump Lead Cement 12.31;165;4;1.2 | ⑱ Pump Displacement 12.31;165;4;1.2 |
| ③ Crew Leave Yard n/a;n/a;n/a;n/a            | ⑦ Pre-Rig Up Safety Meeting n/a;n/a;n/a;n/a             | ⑪ Fill Lines 8.61;30;0;0                 | ⑮ Pump Tail Cement 12.83;323;8;2.2 | ⑲ Slow Rate 8.2;323;8;2.2           |
| ④ Arrive At Loc n/a;n/a;n/a;n/a              | ⑧ Rig-Up Equipment n/a;n/a;n/a;n/a                      | ⑫ Test Lines 8.74;1192;0.5;2             | ⑯ Shutdown 10.95;135;0;59.7        | ⑳ Bump Plug 8.74;1192;0.5;2         |

# WPX - AP 532-17-695 - SURFACE



DH Density (ppg) PS Pump Press (psi) Comb Pump Rate (bbl/min) Pump Stg Tot (bbl)

# HALLIBURTON

## Water Analysis Report

Company: WPX

Submitted by: ERIC CARTER

Attention: J.Trout

Lease NABORS 573

Well # AP 523-17-695

Date: 9/14/2014

Date Rec.: 9/14/2014

S.O.# 901638494

Job Type: SURFACE

Specific Gravity	<i>MAX</i>	<i>1</i>
pH	<i>8</i>	<i>7</i>
Potassium (K)	<i>5000</i>	<i>0</i> Mg / L
Hrdness	<i>500</i>	<i>250</i> Mg / L
Iron (FE2)	<i>300</i>	<i>0</i> Mg / L
Chlorides (Cl)	<i>3000</i>	<i>0</i> Mg / L
Sulfates (SO <sub>4</sub> )	<i>1500</i>	<i>&lt;200</i> Mg / L
Temp	<i>40-80</i>	<i>70</i> Deg
Total Dissolved Solids		<i>310</i> Mg / L

Respectfully: ERIC CARTER

Title: CEMENTING SUPERVISOR

Location: Grand Junction, CO

NOTICE: This report is limited to the described sample tested. Any person using or relying on this report agrees that Halliburton shall not be liable for any loss or damage whether due to act or omission resulting from such report or its u