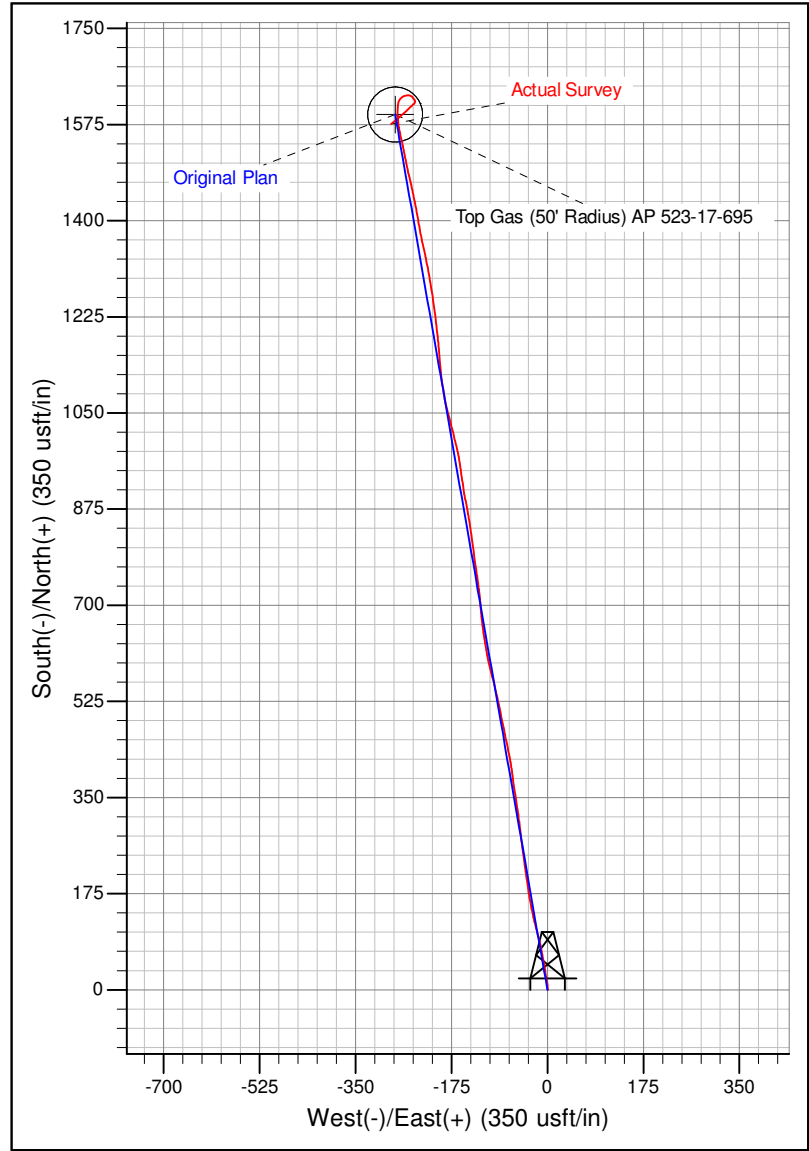
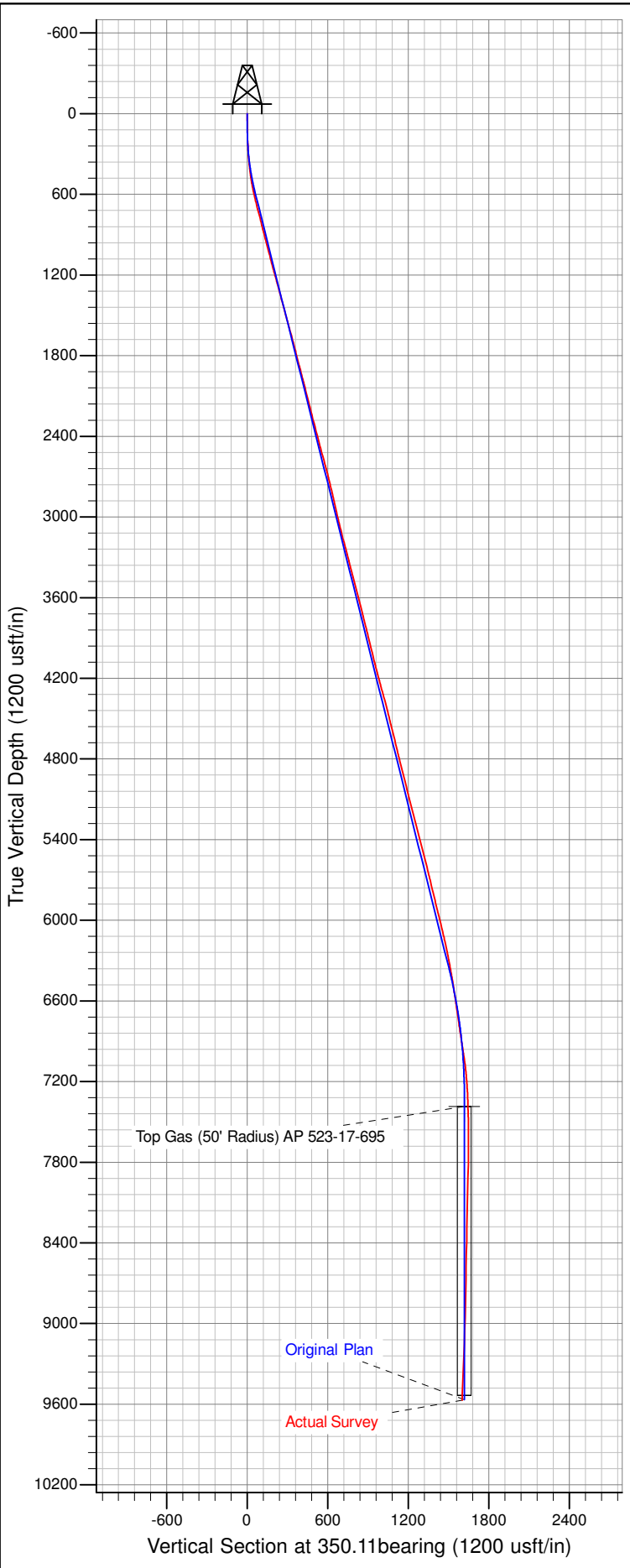




Well Name: AP 523-17-695
 Surface Location: AP 21-20-695 Pad
 North American Datum 1983 , US State Plane 1983 , Colorado Central Zone
 Ground Elevation: 6909.00

+N/-S	+E/-W	Northing	Easting	Latitude	Longitude	Slot
0.00	0.00	1623295.84	2288335.15	39.51760	-108.02294	A10

KELLY BUSHING @ 6935.00usft (Nabors 573 (26' RKB) kjs)



Azimuths to True North
 Magnetic North: 9.95°
 Magnetic Field
 Strength: 51927.3snT
 Dip Angle: 65.66°
 Date: 8/30/2014
 Model: IGRF2010