

1801 Broadway
Suite 500
Denver, Colorado 80202



Callie Fiddes
Regulatory Technician
Tel: 303.398.0550
E-mail: cfiddes@gwogco.com

December 08, 2014

Colorado Oil and Gas Conservation Commission
1120 Lincoln Street, Suite 801
Denver, Colorado 80203

RE: **Proposed Wellbore Spacing Unit**
Chandler Farms HD 20-229HC

Codell New Drill
Township 4 North, Range 67 West, 6th P.M.
Section 19
Weld County, Colorado

Dear Director:

Great Western Operating Company, LLC is planning to drill the above captioned well in accordance with the provisions of COGCC Rule 318A.e.

Great Western proposed wellbore spacing unit consists of:

- **S2SE, N2SE Sec 19, S2SW, N2SW Sec 20**
- **320 acres**

The 30 day notification time period has passed and we have not received any objections to such well locations or proposed spacing unit, therefore Great Western hereby requests the Director to approve the above mentioned well. Great Western Operating Company, LLC respectfully requests that the COGCC review the enclosed map illustrating the proposed wellbore spacing unit.

Respectfully,

Callie Fiddes

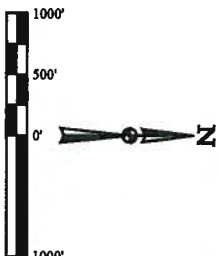
Callie Fiddes
Regulatory Technician
Great Western Operating Company, LLC

T4N, R67W, 6th P.M.

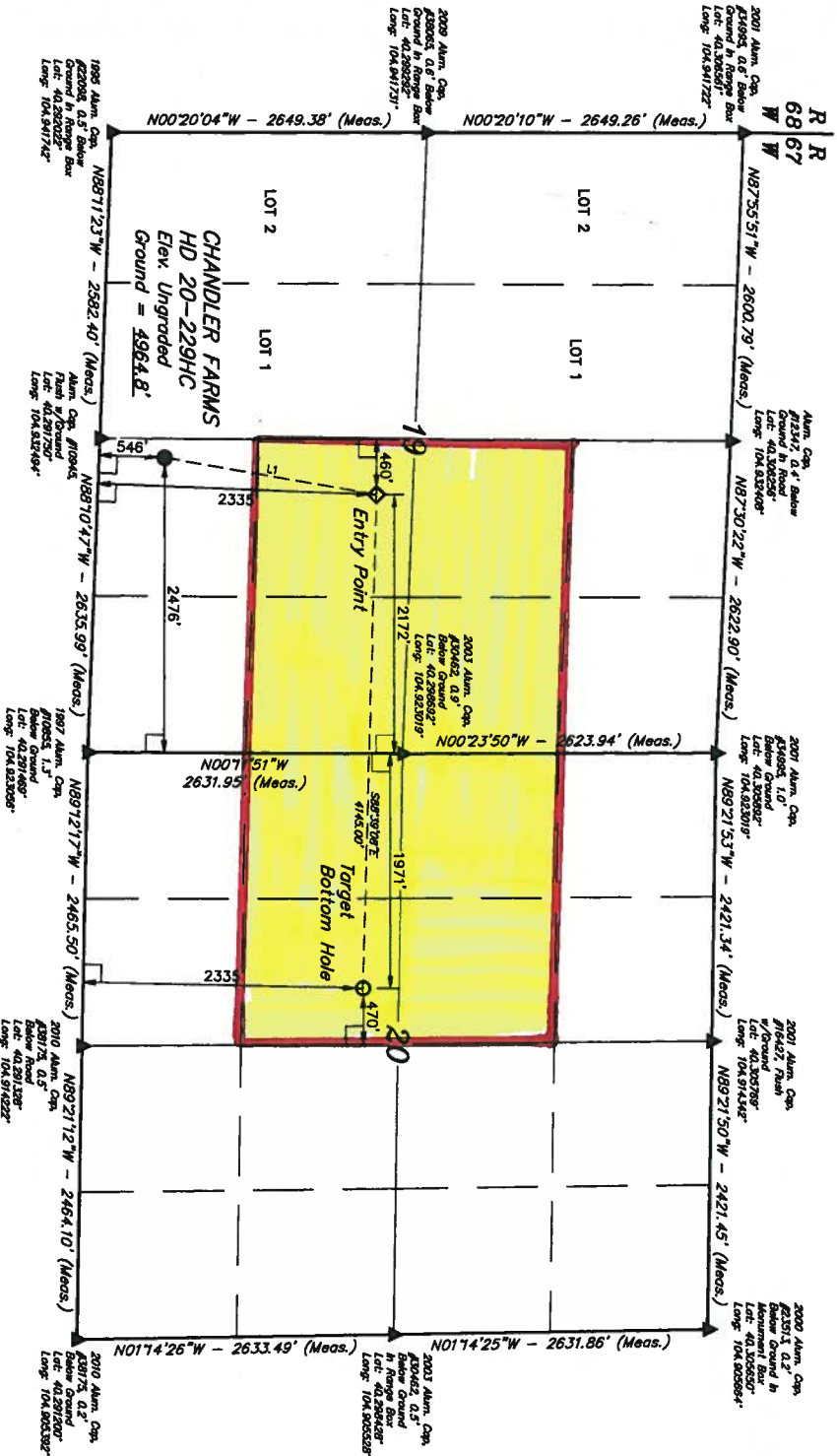
GREAT WESTERN OIL & GAS COMPANY

CHANDLER FARMS HD 20-229HC
SW 1/4 SE 1/4, SECTION 19, T4N, R67W, 6th P.M.
WELD COUNTY, COLORADO

BASIS OF BEARINGS
 BASIS OF ELEVATION
 USGS COOPERATIVE BASE NETWORK CONTROL STATION,
 DESIGNATION "VERMILYEA". NOS DATA SHEET LISTS THE
 NAVD 88 ELEVATION AS BEING 3026 FEET.



LINE TABLE	
LINE	DIRECTION LENGTH
11	N08°29'16"E 1804.69'



- LEGEND:**
- 80' SW/60'
 - PROPOSED WELLHEAD
 - ENTRY POINT
 - TARGET BOTTOM HOLE
 - SECTION CORNERS LOCATED

NAD 83 TARGET BOTTOM HOLE		NAD 83 ENTRY POINT		NAD 83 SECTION CORNERS	
LATITUDE = 40°17'51.59" (40.297764)	LATITUDE = 40°17'51.26" (40.298111)	LATITUDE = 40°17'51.56" (40.298223)	LATITUDE = 40°17'51.56" (40.298223)	LATITUDE = 40°17'51.56" (40.298223)	LATITUDE = 40°17'51.56" (40.298223)
LONGITUDE = 104°54'57.45" (104.915958)	LONGITUDE = 104°55'20.91" (104.920000)	LONGITUDE = 104°55'20.91" (104.920000)	LONGITUDE = 104°55'20.91" (104.920000)	LONGITUDE = 104°55'20.91" (104.920000)	LONGITUDE = 104°55'20.91" (104.920000)
NAD 27 TARGET BOTTOM HOLE	NAD 27 ENTRY POINT	NAD 27 SECTION CORNERS	NAD 27 SECTION CORNERS	NAD 27 SECTION CORNERS	NAD 27 SECTION CORNERS
LATITUDE = 40°17'52.01" (40.297781)	LATITUDE = 40°17'52.26" (40.298128)	LATITUDE = 40°17'52.26" (40.298128)	LATITUDE = 40°17'52.26" (40.298128)	LATITUDE = 40°17'52.26" (40.298128)	LATITUDE = 40°17'52.26" (40.298128)
LONGITUDE = 104°54'55.54" (104.915428)	LONGITUDE = 104°55'20.00" (104.920278)	LONGITUDE = 104°55'20.00" (104.920278)	LONGITUDE = 104°55'20.00" (104.920278)	LONGITUDE = 104°55'20.00" (104.920278)	LONGITUDE = 104°55'20.00" (104.920278)

UTLS, LLC
Corporate Office - 18 South 200 East
Vernal, UT 84078 • (435) 789-1017

UTLS, LLC
SURVEYED BY: ORIO WEINER, C.I.
DATE DRAWN: 09-16-14
SCALE: 1" = 1000'
REVISOR: 10-15-14

WELL LOCATION PLAT

CERTIFICATE OF RECORDING
DO REGISTRY
THIS IS TO CERTIFY THAT THE ABOVE AND FORWARDED INSTRUMENTS
NOTES OF ACTUAL SURVEY MADE BY PERSON UNDER MY SUPERVISION
AND THAT THE SAME ARE TRUE AND CORRECT TO THE BEST OF MY
KNOWLEDGE AND BELIEF.

RECORDED LAND SURVEYOR
STATE OF COLORADO
EXPIRATION DATE: 12/31/14