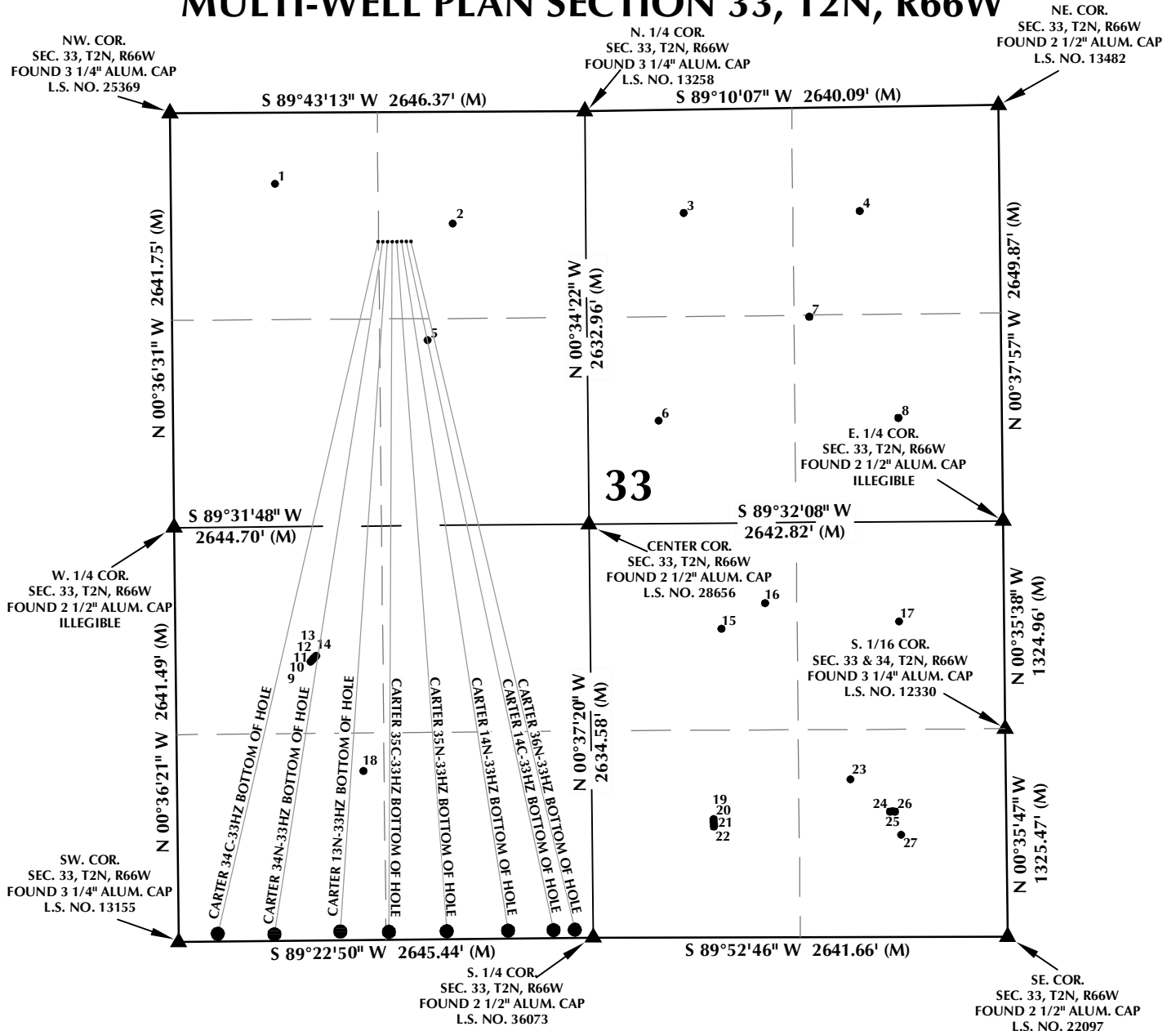


MULTI-WELL PLAN SECTION 33, T2N, R66W



WELL NOTES:

CARTER 34C-33HZ
 SURFACE: 825' FNL, 1320' FWL
 BOTTOM HOLE: 50' FSL, 250' FWL

CARTER 34N-33HZ
 SURFACE: 825' FNL, 1350' FWL
 BOTTOM HOLE: 50' FSL, 613' FWL

CARTER 13N-33HZ
 SURFACE: 825' FNL, 1380' FWL
 BOTTOM HOLE: 50' FSL, 1031' FWL

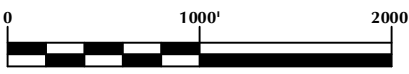
CARTER 35C-33HZ
 SURFACE: 825' FNL, 1410' FWL
 BOTTOM HOLE: 50' FSL, 1342' FWL

CARTER 35N-33HZ
 SURFACE: 825' FNL, 1440' FWL
 BOTTOM HOLE: 50' FSL, 1711' FWL

CARTER 14N-33HZ
 SURFACE: 825' FNL, 1470' FWL
 BOTTOM HOLE: 50' FSL, 2102' FWL

CARTER 14C-33HZ
 SURFACE: 825' FNL, 1500' FWL
 BOTTOM HOLE: 50' FSL, 2392' FWL

CARTER 36N-33HZ
 SURFACE: 825' FNL, 1530' FWL
 BOTTOM HOLE: 50' FSL, 2528' FWL



SCALE: 1" = 1000'

NOTES:

- ▲ INDICATES FOUND SECTION CORNER
- INDICATES CALCULATED CORNER
- BASIS OF BEARING DERIVED FROM COLORADO COORDINATE SYSTEM 1983 NORTH ZONE UNLESS OTHERWISE NOTED.
- ALL MEASURED DISTANCES ARE GRID. COMBINED SCALE FACTOR: .99972633
- WELL FOOTAGES ARE MEASURED AT RIGHT ANGLES TO THE SECTION LINES.

WELL PAD - CARTER 35C-33HZ

MULTI-WELL PLAN
 CARTER 34C-33HZ, CARTER 34N-33HZ,
 CARTER 13N-33HZ, CARTER 35C-33HZ,
 CARTER 35N-33HZ, CARTER 14N-33HZ,
 CARTER 14C-33HZ & CARTER 36N-33HZ
 LOCATED IN SECTION 33
 T2N, R66W, 6TH P.M.
 WELD COUNTY, COLORADO

Kerr-McGee Oil & Gas Onshore L.P.
 1099 18th Street
 Denver, Colorado 80202



CONSULTING, LLC

SHERIDAN OFFICE
 2155 North Main Street
 Sheridan, Wyoming 82801
 Phone 307-674-0609

LOVELAND OFFICE
 1635 Foxtrail Drive, Suite 204
 Loveland, Colorado 80538
 Phone 970-776-4331

DRAFTED BY: LMO	CHECKED BY: BJR	SHEET NO: 1 1 OF 2
DATE DRAFTED: 12/29/14	DATE SURVEYED: 10/4/14	
REVISED: 1/16/15	FILE NAME: 14-77	

K:\ADARKO\2014\2014_77_CARTER_SEC_33_T2N_R66W\PLAT\3\CARTER MULTI-WELL PLAN SHEET 1.dwg, 1/16/2015 9:00:14 AM, lba

MULTI-WELL PLAN SECTION 33, T2N, R66W

NUMBER	WELL NAME	API NUMBER	LATITUDE (NAD 83)	LONGITUDE (NAD 83)	SURFACE ELEVATION	TOTAL DEPTH
1	*CARTER 11-33A	05-123-16240	40.100607	-104.789252	N/A	8212
2	CARTER 21-33	05-123-17451	40.099889	-104.785204	4960.7	4866
3	*RANCHERO 31-33 1	05-123-09434	40.100040	-104.779938	N/A	4946
4	*RANCHERO 41-33 2	05-123-09435	40.100051	-104.775926	N/A	4960
5	MEL ANDERSON GAS UNIT 2	05-123-10910	40.097844	-104.785764	4953.0	8100
6	*UPRR 42 PAN AM AP 3	05-123-09583	40.096410	-104.780548	N/A	4912
7	UPRR 42 PAN AM GAS UNIT "AT" 1	05-123-09460	40.098201	-104.777099	4986.3	8078
8	UPRR 42 PAN AM AP 2	05-123-09582	40.096425	-104.775082	4991.1	4900
9	COTTONWOOD 33-33	05-123-31541	40.092242	-104.788529	4948.6	7767
10	COTTONWOOD 34-33	05-123-31548	40.092262	-104.788504	4948.7	8425
11	COTTONWOOD 12-33	05-123-31526	40.092282	-104.788477	4948.7	8108
12	COTTONWOOD 13-33	05-123-31544	40.092301	-104.788454	4948.6	7880
13	COTTONWOOD 32-33	05-123-31542	40.092322	-104.788426	4948.9	8230
14	COTTONWOOD 11-33	05-123-31521	40.092345	-104.788396	4948.8	7803
15	*UPRR 42 PAN AM AP 4	05-123-09584	40.092759	-104.779152	N/A	4875
16	LUPTON NORTH 10-33A	05-123-21702	40.093204	-104.778155	4972.1	8130
17	UPRR 42 PAN AM AP 1	05-123-09357	40.092860	-104.775101	4983.4	4935
18	MEL ANDERSON GAS UNIT 1	05-123-08422	40.090322	-104.787341	4970.8	8110
19	COTTONWOOD 23-33	05-123-31539	40.089427	-104.779365	4982.0	7805
20	COTTONWOOD 15-33	05-123-31535	40.089382	-104.779366	4981.8	7666
21	COTTONWOOD 14-33	05-123-31547	40.089338	-104.779364	4981.2	8355
22	COTTONWOOD 36-33	05-123-31537	40.089299	-104.779365	4982.0	8270
23	UPRR 42 PAN AM "AT" TRUE 1	05-123-11207	40.090107	-104.776241	4982.8	8100
24	COTTONWOOD 24-33	05-123-31534	40.089537	-104.775347	4986.6	8440
25	COTTONWOOD 9-33	05-123-31546	40.089539	-104.775288	4986.7	8314
26	COTTONWOOD 39-33	05-123-31549	40.089538	-104.775230	4986.9	7740
27	*UPRR 42 PAN AM AP 5	05-123-09585	40.089129	-104.775093	N/A	4903

NOTES:

- * INDICATES EXISTING WELLS THAT WERE NOT SURVEYED BUT DERIVED FROM COLORADO OIL AND GAS CONSERVATION COMMISSION (COGCC).

**EXISTING WELL EXHIBIT
SECTION 33, T2N, R66W, 6TH P.M.
WELD COUNTY, COLORADO**

**Kerr-McGee Oil &
Gas Onshore L.P.
1099 18th Street
Denver, Colorado 80202**



CONSULTING, LLC

SHERIDAN OFFICE
2155 North Main Street
Sheridan, Wyoming 82801
Phone 307-674-0609

LOVELAND OFFICE
1635 Foxtrail Drive, Suite 204
Loveland, Colorado 80538
Phone 970-776-4331

DRAFTED BY: LMO	CHECKED BY: BJR	SHEET NO: 2 2 OF 2
DATE DRAFTED: 12/29/14	DATE SURVEYED: 10/4/14	
REVISED:	FILE NAME: 14-77	