

K:\ANADARKO\2014\12-65-29-20\RESOLUTION FED 12-65-29-20-2NH.dwg, 2/4/2015 4:48:12 PM, april

T12N, R65W

MATCH LINE  
SEE SHEET 2

WELL BORE CONTINUES  
INTO SECTION 20

NW. COR.  
SEC. 29, T12N, R65W  
SET ALUM. CAP  
L.S. NO. 38305

NE. COR.  
SEC. 29, T12N, R65W  
FOUND STONE

SURFACE LOCATION  
GROUND ELEVATION= 5951.3'  
NAD 83  
LATITUDE= 40.972013°  
LONGITUDE= -104.692591°

BOTTOM HOLE LOCATION  
NAD 83  
LATITUDE= 40.999118°  
LONGITUDE= -104.690307°

LATITUDE= 40°58'19.246"  
LONGITUDE= -104°41'33.328"

SURFACE LOCATION  
NAD 27  
LATITUDE= 40.972030°  
LONGITUDE= -104.692070°

BOTTOM HOLE LOCATION  
NAD 27  
LATITUDE= 40.999135°  
LONGITUDE= -104.689786°

LATITUDE= 40°59'56.886"  
LONGITUDE= -104°41'23.229"

RESOLUTION FED  
12-65-29-20-2NH  
SURFACE LOCATION

SW. COR.  
SEC. 29, T12N, R65W  
SET ALUM. CAP  
L.S. NO. 38305

SE. COR.  
SEC. 29, T12N, R65W  
SET ALUM. CAP  
L.S. NO. 38305

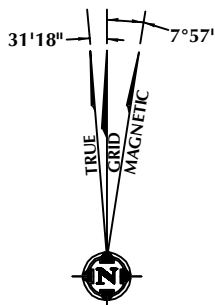
S 89°43'08" W 5259.69' (M)

#### CERTIFICATE OF SURVEYOR:

THIS IS TO CERTIFY THAT THE ABOVE PLAT WAS PREPARED FROM FIELD NOTES OF ACTUAL SURVEY MADE BY ME OR UNDER MY SUPERVISION AND THAT THE SAME ARE TRUE AND CORRECT TO THE BEST OF MY KNOWLEDGE AND BELIEF. THIS CERTIFICATE DOES NOT REPRESENT A LAND SURVEY PLAT OR IMPROVEMENT SURVEY PLAT AS DEFINED BY C.S. 38-51-102 AND CANNOT BE RELIED UPON TO DETERMINE OWNERSHIP.

*Benjamin J. Reenders*  
BENJAMIN J. REENDERS  
PROFESSIONAL LAND SURVEYOR  
COLORADO REGISTRATION NUMBER 48366 2/3/15

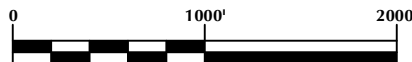
NOTICE:  
ACCORDING TO COLORADO STATE LAW YOU MUST COMMENCE ANY LEGAL ACTION BASED UPON ANY DEFECT IN THIS SURVEY WITHIN THREE YEARS AFTER YOU FIRST DISCOVER SUCH DEFECT. IN NO EVENT MAY ANY ACTION BASED UPON ANY DEFECT IN THIS SURVEY BE COMMENCED MORE THAN TEN YEARS FROM THE DATE ON THE CERTIFICATION SHOWN HEREON.



NOTE:  
MAGNETIC NORTH IS CURRENT AS OF 1/15/2015.  
MAGNETIC NORTH CHANGES WEST 0°06' PER YEAR.

#### NOTES:

- ▲ INDICATES FOUND SECTION CORNER
- INDICATES CALCULATED CORNER
- ELEVATION BASED ON NAVD88 (GEOID09)
- BASIS OF BEARING DERIVED FROM COLORADO COORDINATE SYSTEM 1983 NORTH ZONE UNLESS OTHERWISE NOTED.
- ALL MEASURED DISTANCES ARE GRID.  
COMBINED SCALE FACTOR: .99975846
- OPERATOR: CHRIS KASCHMITTER / PDOP = 1.5
- SEE ADDENDUM TO WELL LOCATION CERTIFICATE FOR EXISTING IMPROVEMENTS WITHIN 500' OF THE WELL PAD.
- WELL FOOTAGES ARE MEASURED AT RIGHT ANGLES TO THE SECTION LINES.
- THE BOTTOM OF HOLE BEARS N03°07'52"E 9896' FROM THE SURFACE LOCATION.



SCALE: 1" = 1000'

#### WELL PAD - RESOLUTION FED 12-65-29-20NH

RESOLUTION FED 12-65-29-20-2NH  
WELL LOCATION CERTIFICATE  
420' FSL & 745' FWL SWSW (SURFACE)  
LOCATED IN SECTION 29  
295' FNL & 1270' FWL NWNW (BOTTOM)  
LOCATED IN SECTION 20  
T12N, R65W, 6TH P.M.  
WELD COUNTY, COLORADO

Anadarko E&P  
Onshore LLC  
1099 18th Street  
Denver, Colorado 80202



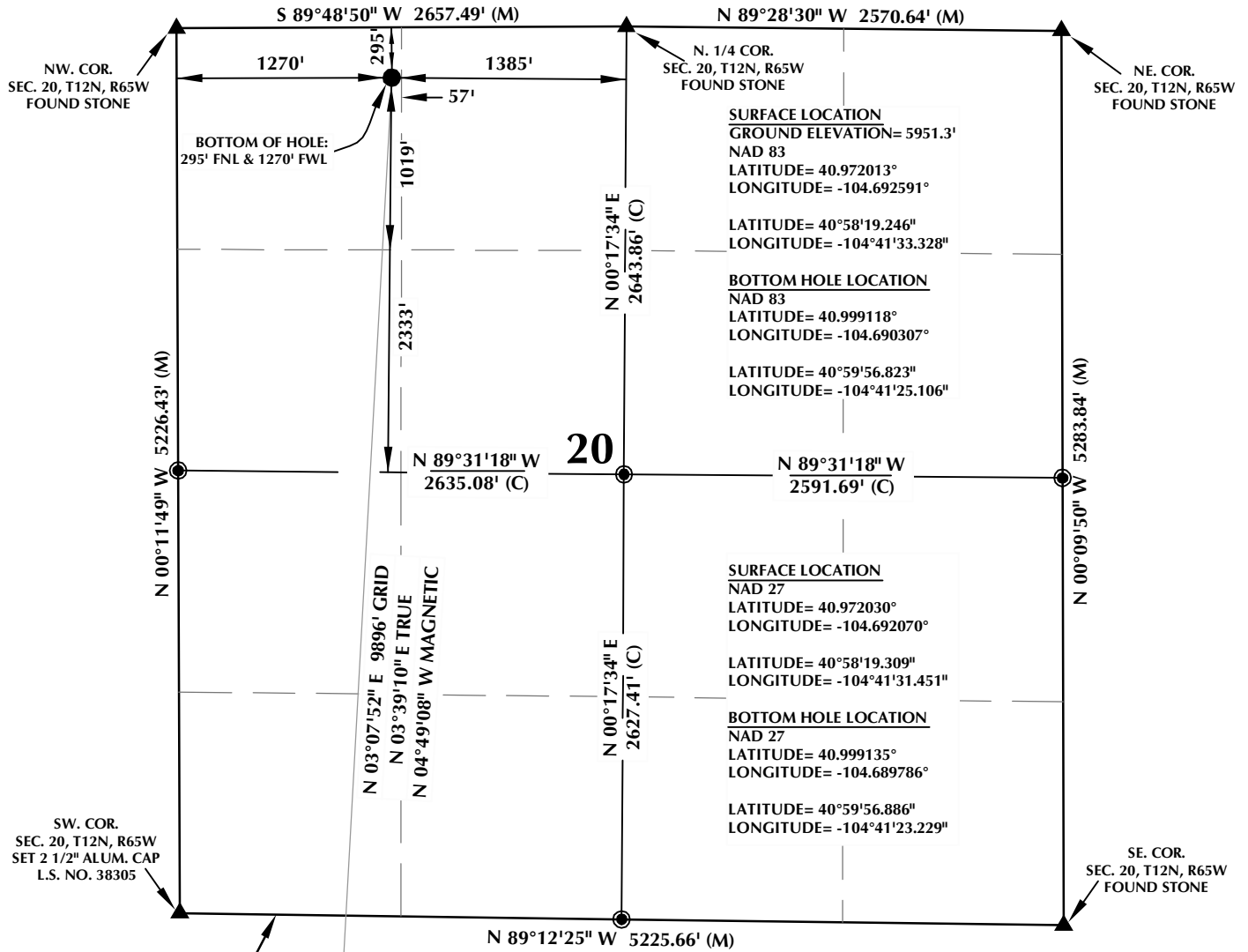
#### CONSULTING, LLC

SHERIDAN OFFICE  
1095 Saberton Avenue  
Sheridan, Wyoming 82801  
Phone 307-674-0609

LOVELAND OFFICE  
1635 Foxtrail Drive, Suite 204  
Loveland, Colorado 80538  
Phone 970-776-4331

DRAFTED BY:	MDZ	CHECKED BY:	BJR	SHEET NO:
DATE DRAFTED:	1/26/15	DATE SURVEYED:	12/10/14	1
REVISED:	2/3/15	FILE NAME:	14-52	1 OF 2

# T12N, R65W



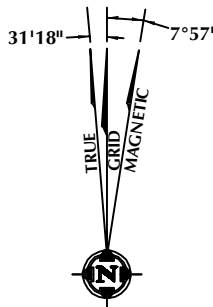
MATCH LINE  
SEE SHEET 1

## CERTIFICATE OF SURVEYOR:

THIS IS TO CERTIFY THAT THE ABOVE PLAT WAS PREPARED FROM FIELD NOTES OF ACTUAL SURVEY MADE BY ME OR UNDER MY SUPERVISION AND THAT THE SAME ARE TRUE AND CORRECT TO THE BEST OF MY KNOWLEDGE AND BELIEF. THIS CERTIFICATE DOES NOT REPRESENT A LAND SURVEY PLAT OR IMPROVEMENT SURVEY PLAT AS DEFINED BY C.S. 38-51-102 AND CANNOT BE RELIED UPON TO DETERMINE OWNERSHIP.

*Benjamin J. Reenders*  
BENJAMIN J. REENDERS  
PROFESSIONAL LAND SURVEYOR  
COLORADO REGISTRATION NUMBER 14306 2/3/15

NOTICE:  
ACCORDING TO COLORADO STATE LAW YOU MUST COMMENCE ANY LEGAL ACTION BASED UPON ANY DEFECT IN THIS SURVEY WITHIN THREE YEARS AFTER YOU FIRST DISCOVER SUCH DEFECT. IN NO EVENT MAY ANY ACTION BASED UPON ANY DEFECT IN THIS SURVEY BE COMMENCED MORE THAN TEN YEARS FROM THE DATE ON THE CERTIFICATION SHOWN HEREON.



NOTE:  
MAGNETIC NORTH IS CURRENT AS OF 1/15/2015.  
MAGNETIC NORTH CHANGES WEST 0°06' PER YEAR.

## NOTES:

- ▲ INDICATES FOUND SECTION CORNER
- INDICATES CALCULATED CORNER
- ELEVATION BASED ON NAVD88 (GEOID09)
- BASIS OF BEARING DERIVED FROM COLORADO COORDINATE SYSTEM 1983 NORTH ZONE UNLESS OTHERWISE NOTED.
- ALL MEASURED DISTANCES ARE GRID.  
COMBINED SCALE FACTOR: .99975846
- OPERATOR: CHRIS KASCHMITTER / PDOP = 1.5
- SEE ADDENDUM TO WELL LOCATION CERTIFICATE FOR EXISTING IMPROVEMENTS WITHIN 500' OF THE WELL PAD.
- WELL FOOTAGES ARE MEASURED AT RIGHT ANGLES TO THE SECTION LINES.
- THE BOTTOM OF HOLE BEARS N03°07'52"E 9896' FROM THE SURFACE LOCATION.



SCALE: 1" = 1000'

## WELL PAD - RESOLUTION FED 12-65-29-20NH

RESOLUTION FED 12-65-29-20-2NH  
WELL LOCATION CERTIFICATE  
420' FSL & 745' FWL SWSW (SURFACE)  
LOCATED IN SECTION 29  
295' FNL & 1270' FWL NWNW (BOTTOM)  
LOCATED IN SECTION 20  
T12N, R65W, 6TH P.M.  
WELD COUNTY, COLORADO

Anadarko E&P  
Onshore LLC  
1099 18th Street  
Denver, Colorado 80202



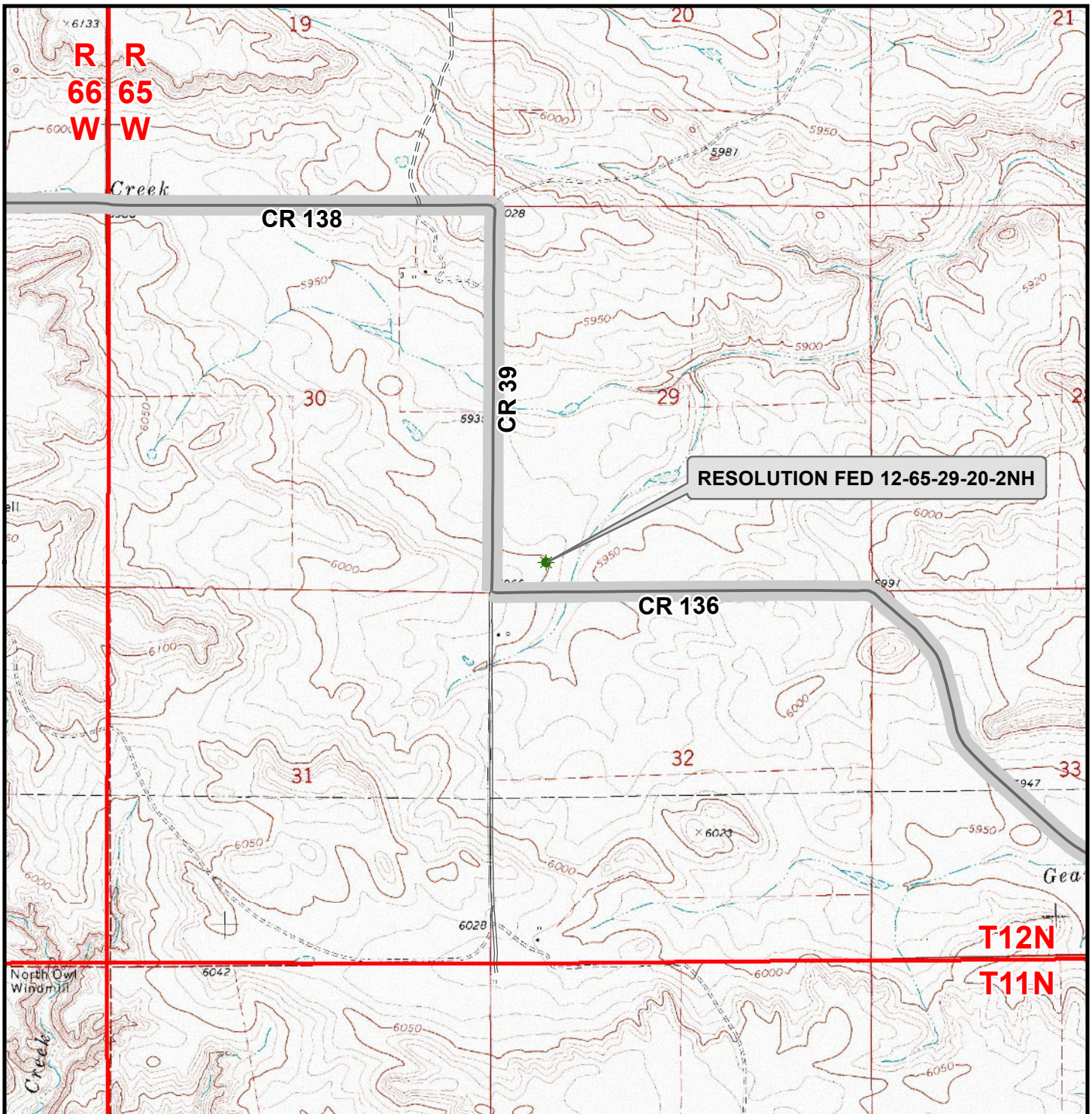
## CONSULTING, LLC

SHERIDAN OFFICE  
1095 Saberton Avenue  
Sheridan, Wyoming 82801  
Phone 307-674-0609

LOVELAND OFFICE  
1635 Foxtrail Drive, Suite 204  
Loveland, Colorado 80538  
Phone 970-776-4331

DRAFTED BY:	MDZ	CHECKED BY:	BJR	SHEET NO:
DATE DRAFTED:	1/26/15	DATE SURVEYED:	12/10/14	2
REVISED:	2/3/15	FILE NAME:	14-52	2 OF 2





### Legend

- ★ Well - Fed - Proposed   
  Road - Primitive - Existing   
  Road - County - Existing  
 Road - Improved - Existing   
 Road - Highway - Existing

WELL PAD - RESOLUTION FED 12-65-29-20NH

**GENERAL LOCATION MAP**  
**RESOLUTION FED 12-65-29-20-2NH**  
**LOCATED IN SECTION 29**  
**T12N, R65W, 6th P.M.**  
**WELD COUNTY, COLORADO**

**Anadarko E&P**  
**Onshore LLC**

1099 18th Street  
 Denver, CO 80202



**CONSULTING, LLC**

**SHERIDAN OFFICE**  
 2155 North Main Street  
 Sheridan, Wyoming 82801  
 Phone 307-674-0609

**LOVELAND OFFICE**  
 1635 Foxtail Drive, Suite 204  
 Loveland, Colorado 80538  
 Phone 970-776-4331



SCALE: 1" = 2,000ft

NAD83 CO-Nft

DRAWN: JELO

DATE: 26 Jan 2015

REVISED: TL

DATE: 3 Feb 2015