



Digital Cement Bond Log  
Gamma Ray  
CCL

Company		KERR MCGEE OIL AND GAS					
Well		MUSE 1					
Field		WATTENBERG					
County		WELD					
State		COLORADO					
Location:		APL # : 05-123-08643					
SHL: 1460' FNL 990' FEL		Other Services					
LAT: 40.14200 LONG: -104.70090		SE/NE					
SEC 18 TWP 2N RGE 65W		Elevation					
Permanent Datum		GL	4962'				
Log Measured From		KB 11'	K.B. 4973'				
Drilling Measured From		KB	D.F. 4972'				
G.L. 4962'							
Date	2-4-2015						
Run Number	ONE						
Depth Driller	7945'						
Depth Logger	3062'						
Bottom Logged Interval	3054'						
Top Log Interval	SURFACE						
Open Hole Size	WATER						
Type Fluid	1.0						
Density / Viscosity	122 DEG F						
Max. Recorded Temp.	276'						
Estimated Cement Top	N/A						
Time Well Ready	N/A						
Time Logger on Bottom	3812						
Equipment Number	GREELEY						
Location	N.POLLOCK						
Recorded By	RANDY J.						
Witnessed By							
Borehole Record		Tubing Record					
Run Number	Bit	From	To	Size	Weight	From	To
ONE							
TWO							
Casing Record	Size	Wgt/Ft	Top	Bottom			
Surface String	8.58	24#	SURFACE	213'			
Prot. String							
Production String	4.5	11.6#	SURFACE	7940'			
Liner							

<<< Fold Here >>>

All interpretations are opinions based on inferences from electrical or other measurements and we cannot and do not guarantee the accuracy or correctness of any interpretation, and we shall not, except in the case of gross or willful negligence on our part, be liable or responsible for any loss, costs, damages, or expenses incurred or sustained by anyone resulting from any interpretation made by any of our officers, agents or employees. These interpretations are also subject to our general terms and conditions set out in our current Price Schedule.

Comments

FREE PIPE CALIBRATION AT 3039' (81mV)  
RAN UNDER 1000 PUNDS OF PRESSURE  
RAN C.B.L. TO VERIFY CEMENTN TOP.

THANK YOU FOR USING WARRIOR ENERGY SERVICES!

Sensor	Offset (ft)	Schematic	Description	Len (ft)	OD (in)	Wt (lb)
CENT	19.08					

Tool Name	Length (ft)	Weight (lb)	O.D. (in)
PTS275	2.83	2.75	
HEADVOLT RBT	16.25		
IntTemp	14.83		
WVFS3FT	11.58		
WVFCAL	11.58		
WVFS1	11.58		
WVFS2	11.58		
WVFS3	11.58		
WVFS4	11.58		
WVFS5	11.58		
WVFS6	11.58		
WVFS7	11.58		
WVFS8	11.58		
WVFS5FT	10.58		
RBT-Probe (Base) Probe Radii Bond Tool with Digital Telemetry	8.92	2.75	90.00
CNLSC	6.00		
CNSSC	5.17		
GR	4.33		
CCL	3.64		
GR-Probe (275) Probe 2.75"	4.33	2.75	30.00
GR	0.90		
CNT-Probe_B (275) 6 bow centralizer	3.00	2.75	40.00

Dataset: muse 1.db: field/well/run1/pass7

Total Length: 19.08 ft

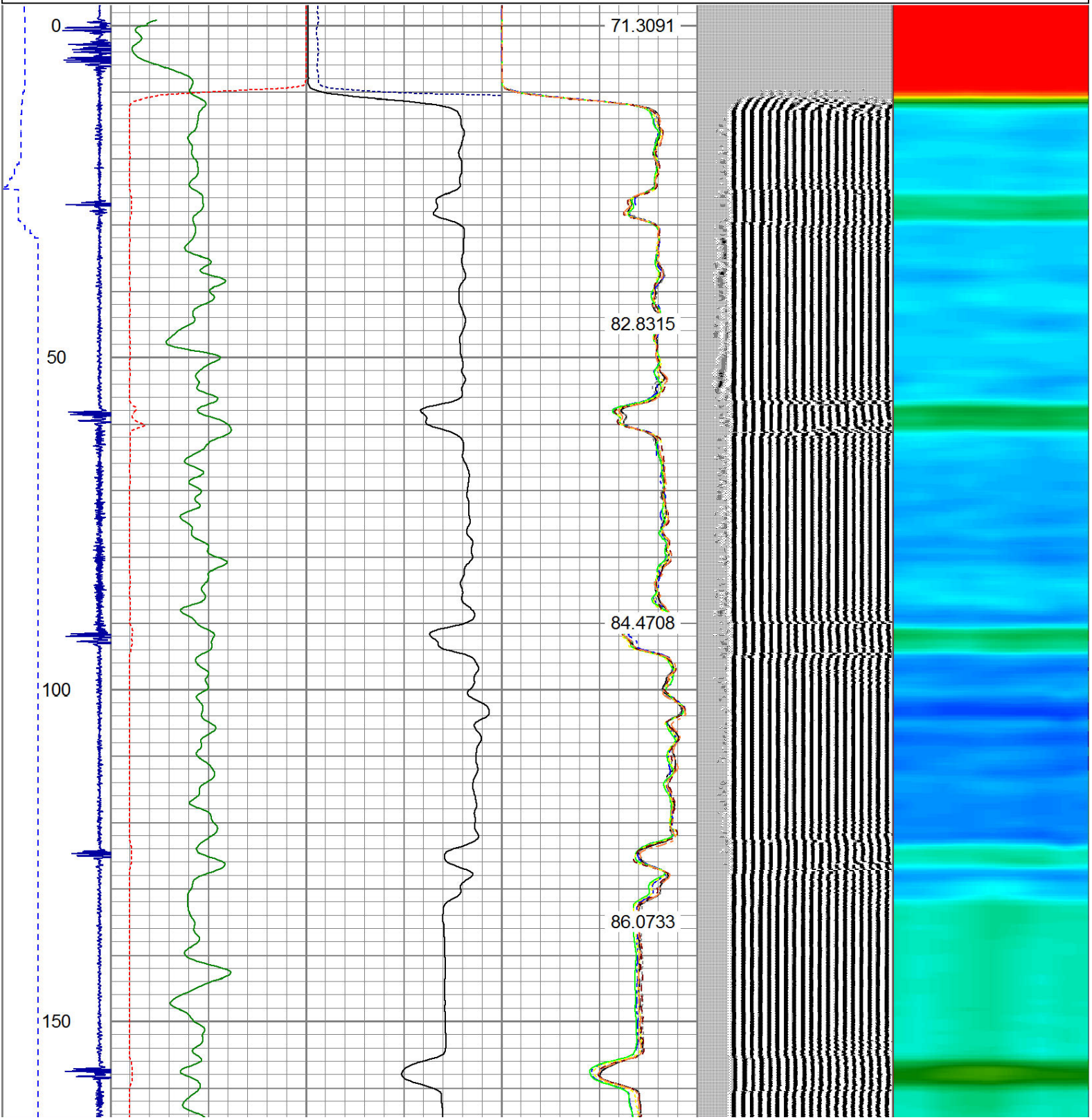
Total Weight: 160.00 lb

O.D. 2.75 in

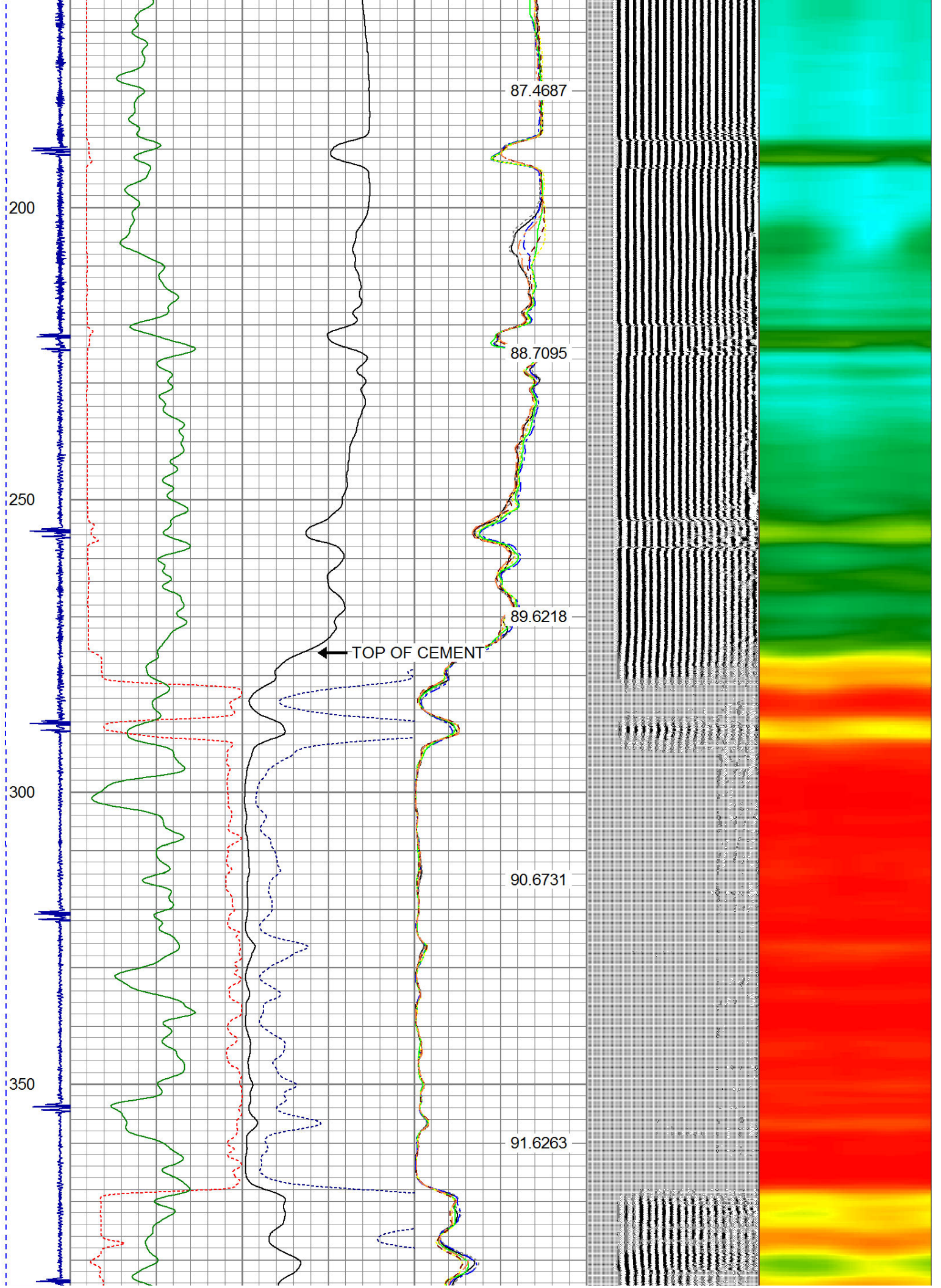
Dataset Creation: Wed Feb 04 10:15:28 2015 by Log 7.0 B1

Charted by: Depth in Feet scaled 1:240

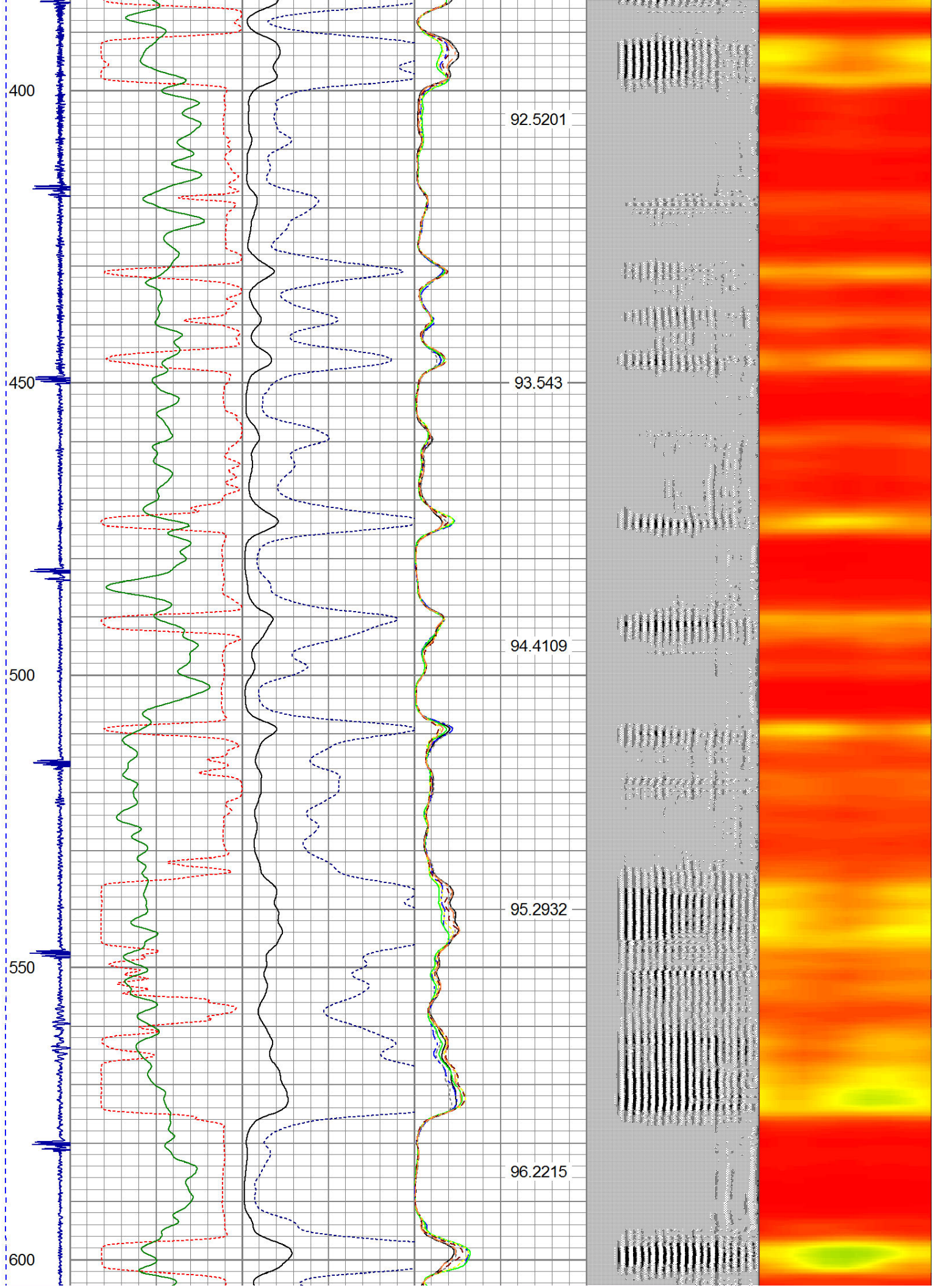
-9	CCL	1	200	TT (usec)	800	0	AMP (mV)	100	0	AMPS1	100	200	VDL	1200	1	Cement Map	8
LSPD			0	GR (cps)	200	0	AMPx5 (mV)	20	0	AMPS2	100				1	100	
(ft/min)			200	GR (cps)	400				0	AMPS4	100						
0									0	AMPS5	100						
									0	AMPS6	100						
									0	AMPS7	100						
									0	AMPS8	100						
												IntTemp					
												(degF)					



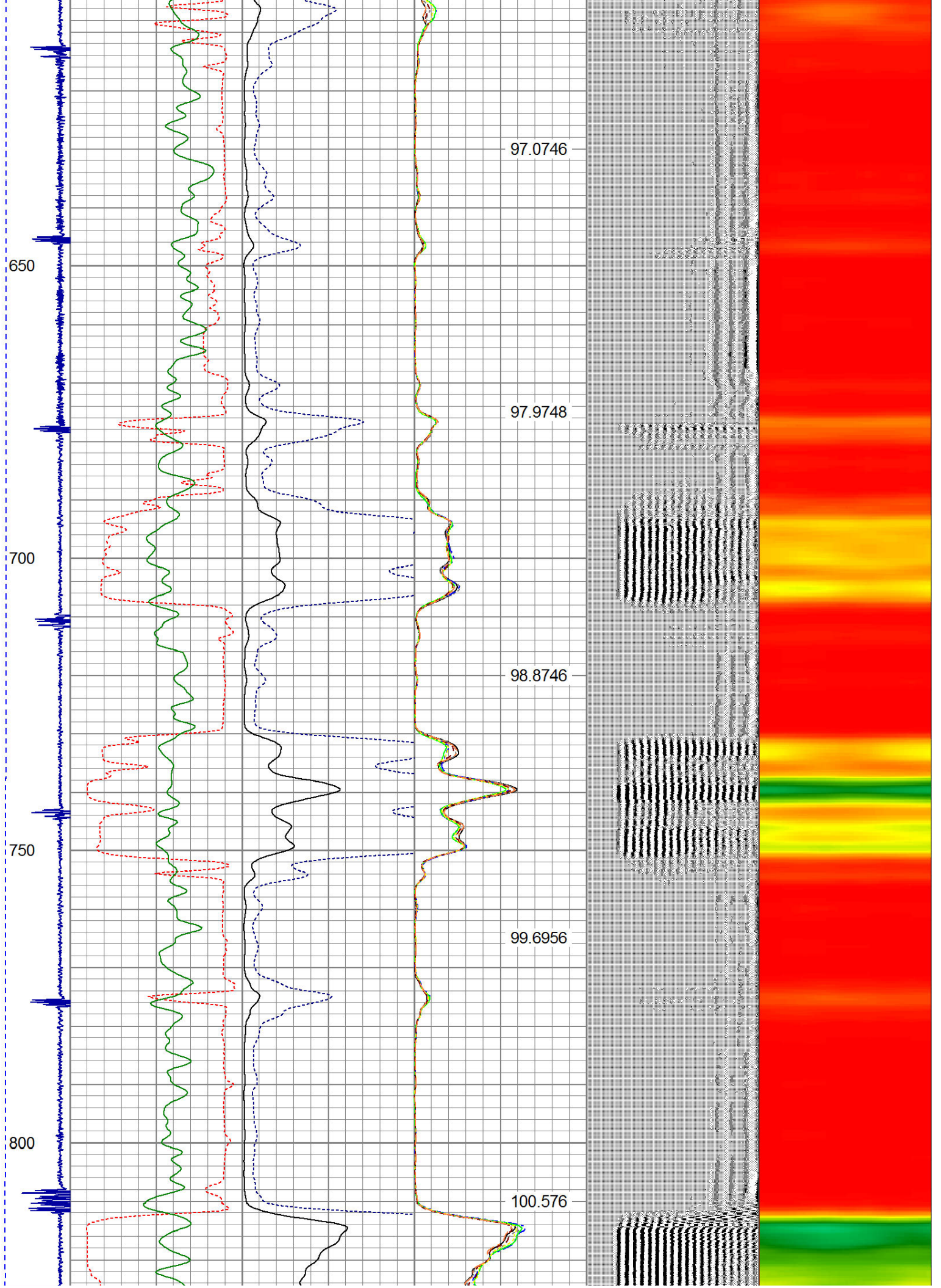




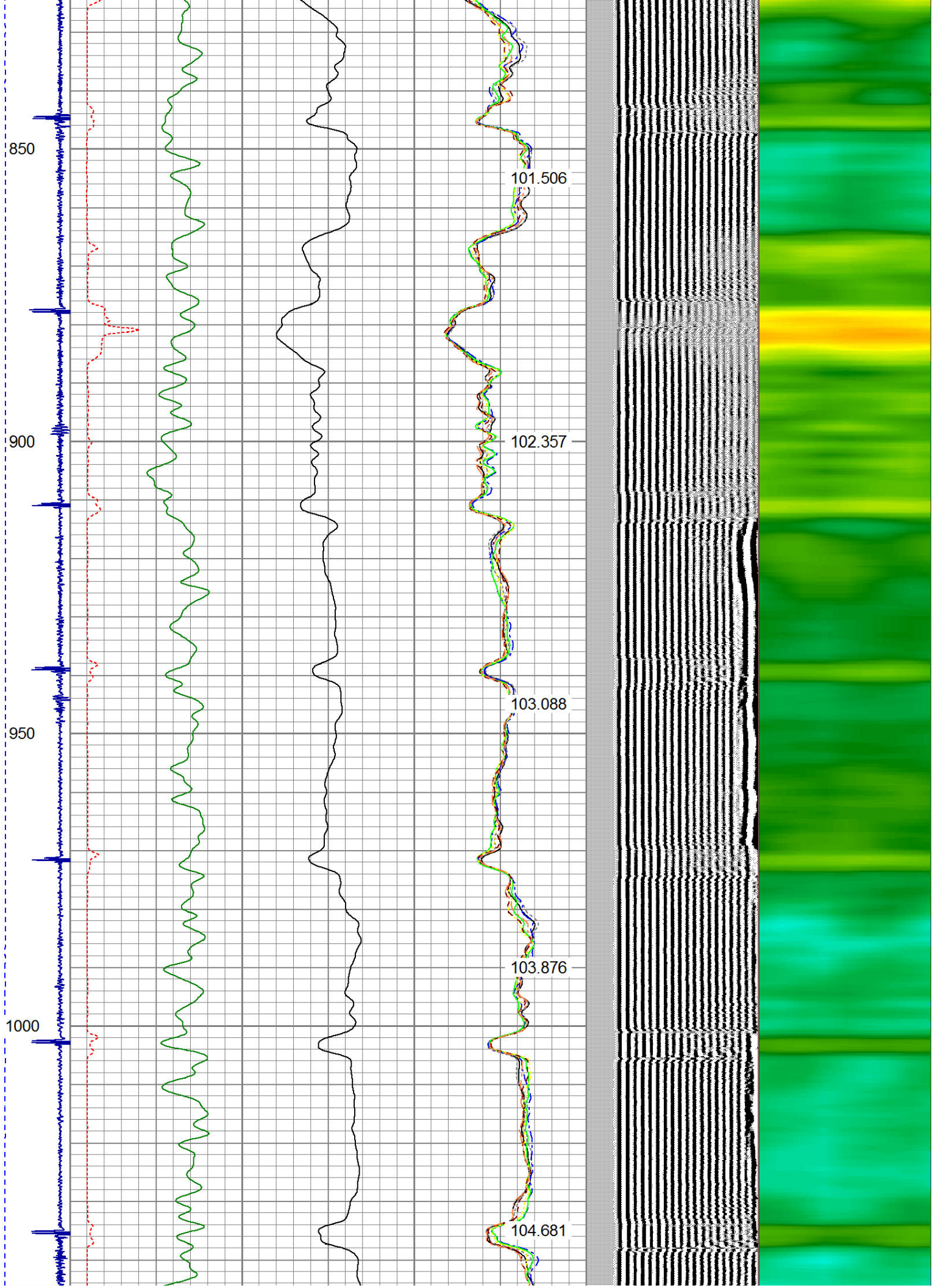




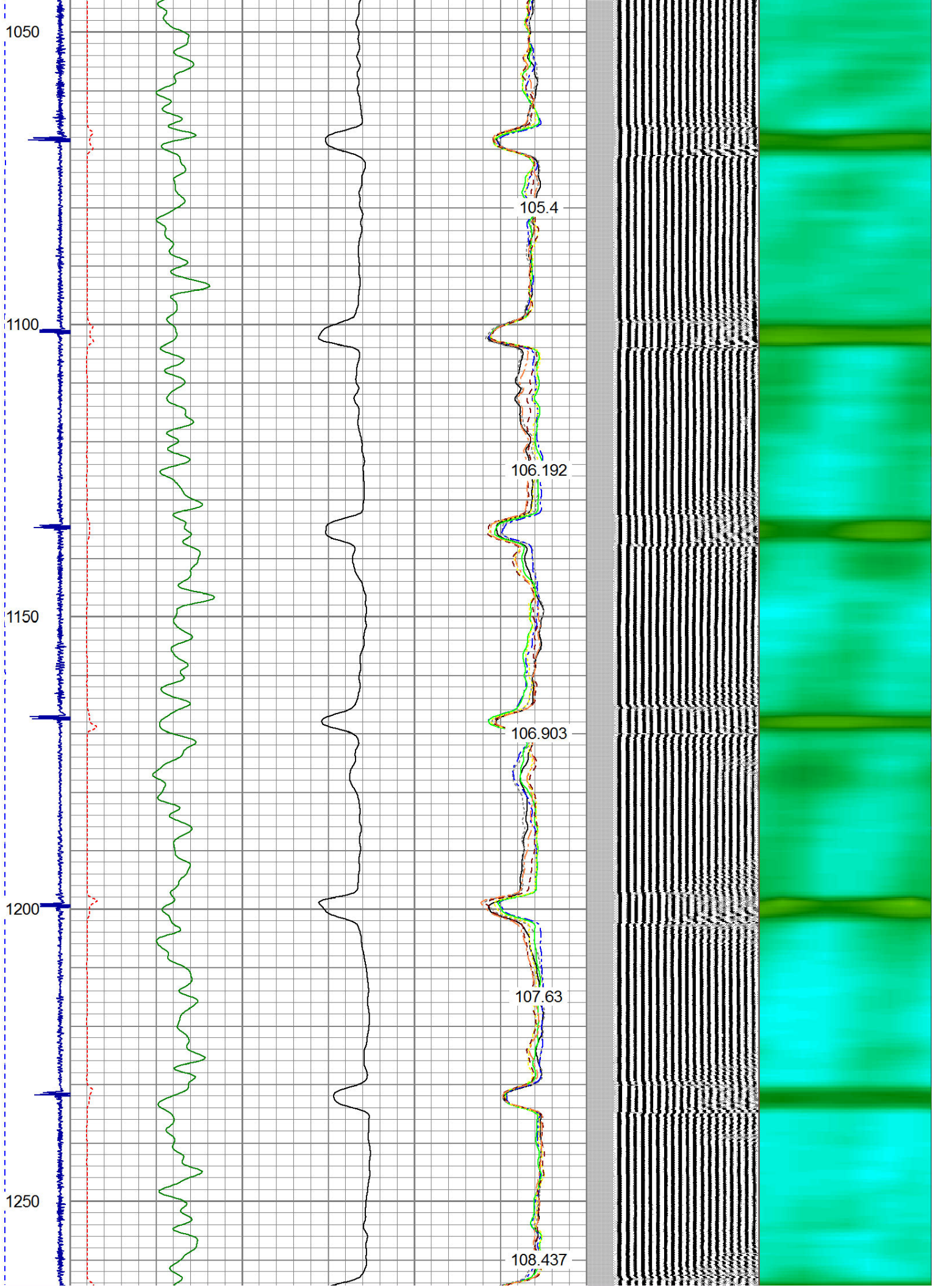




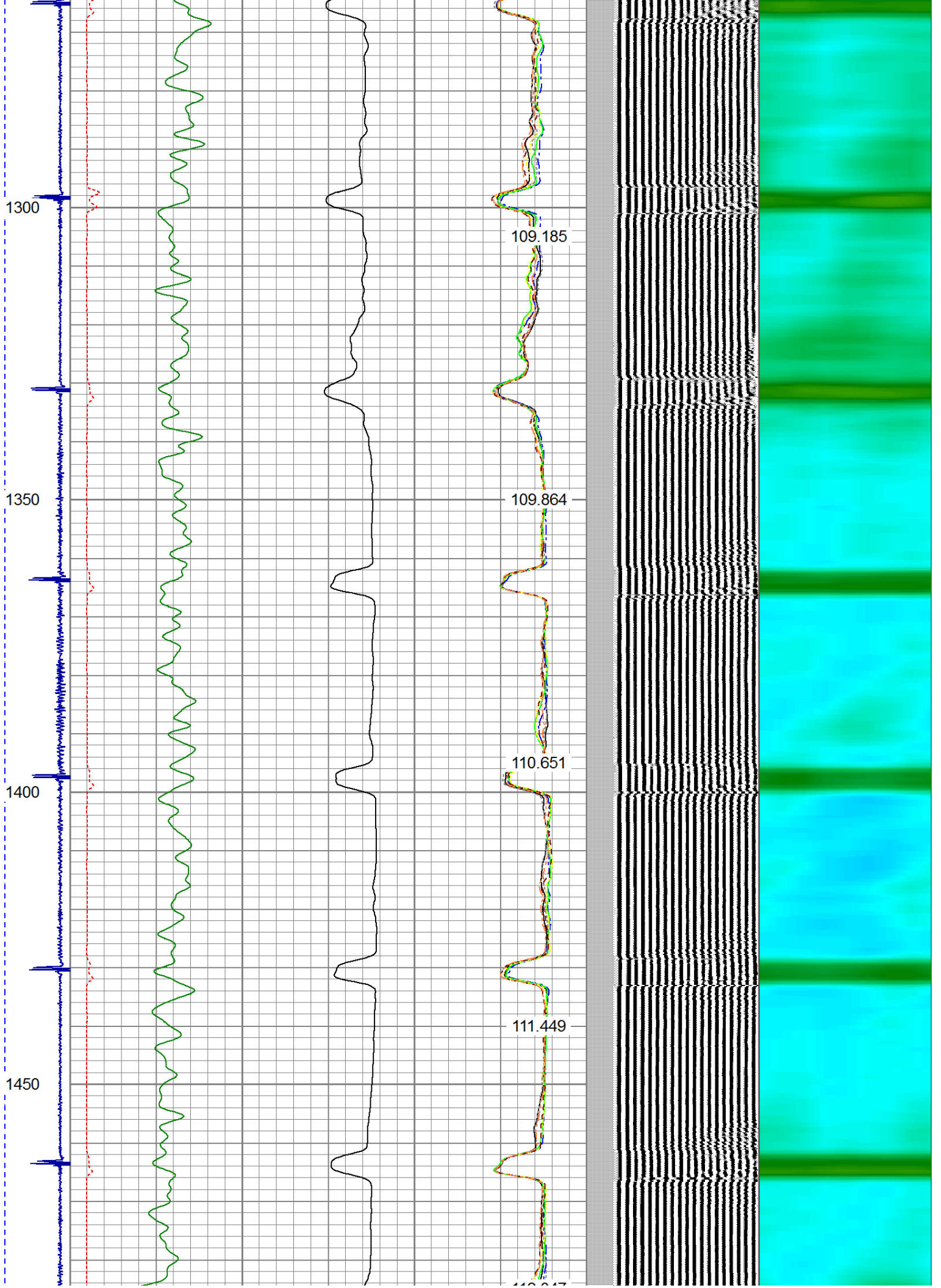




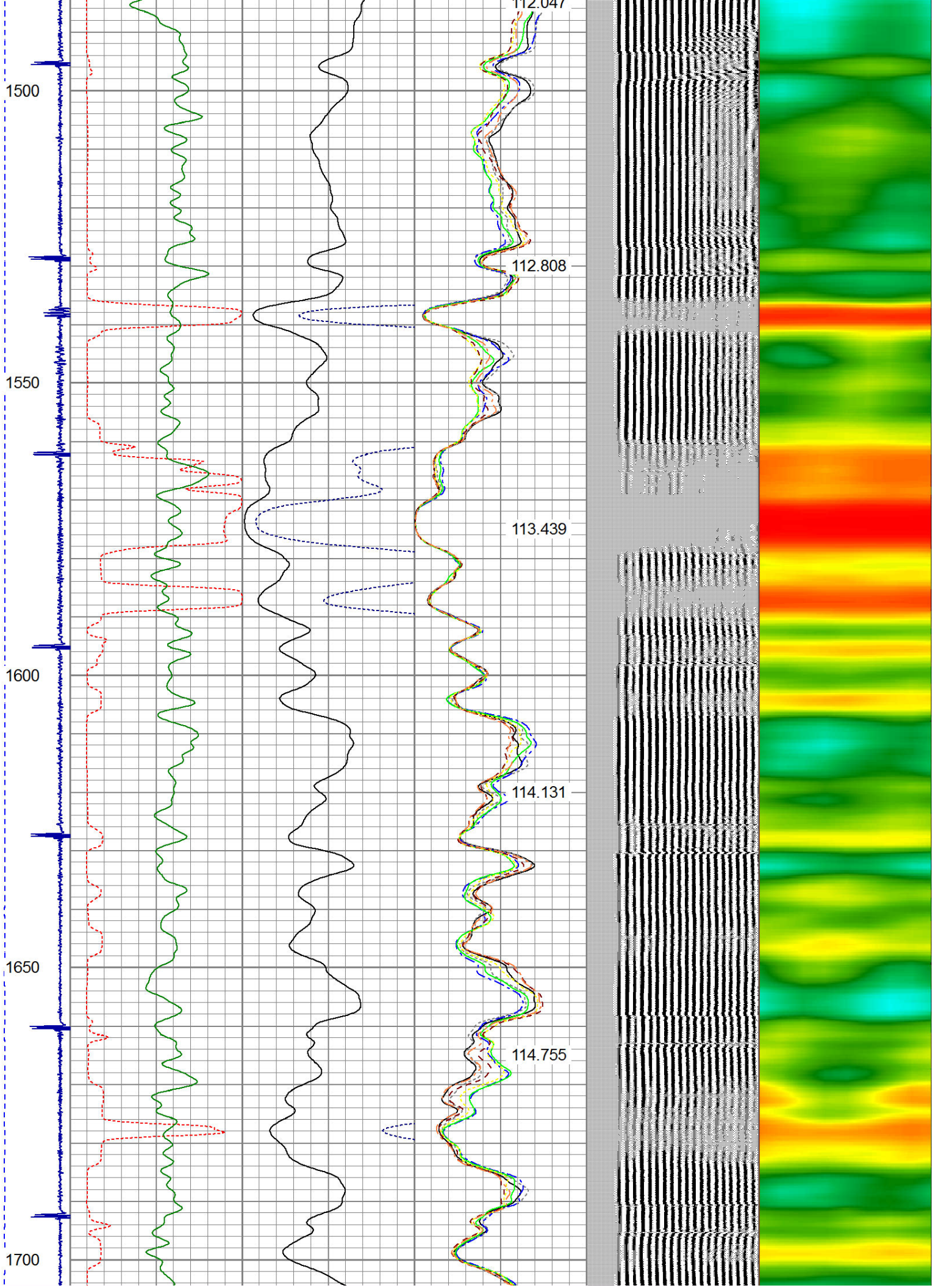




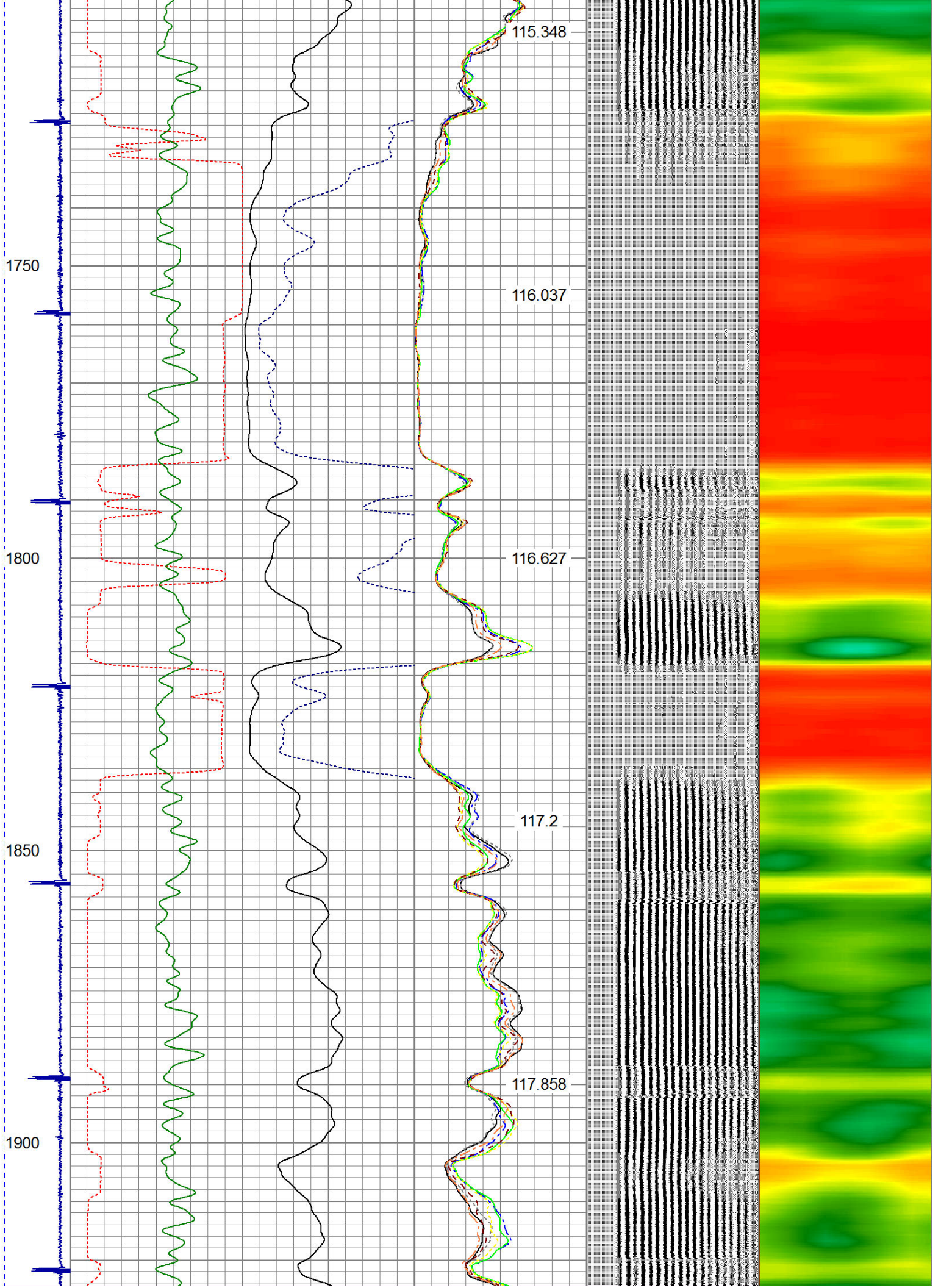




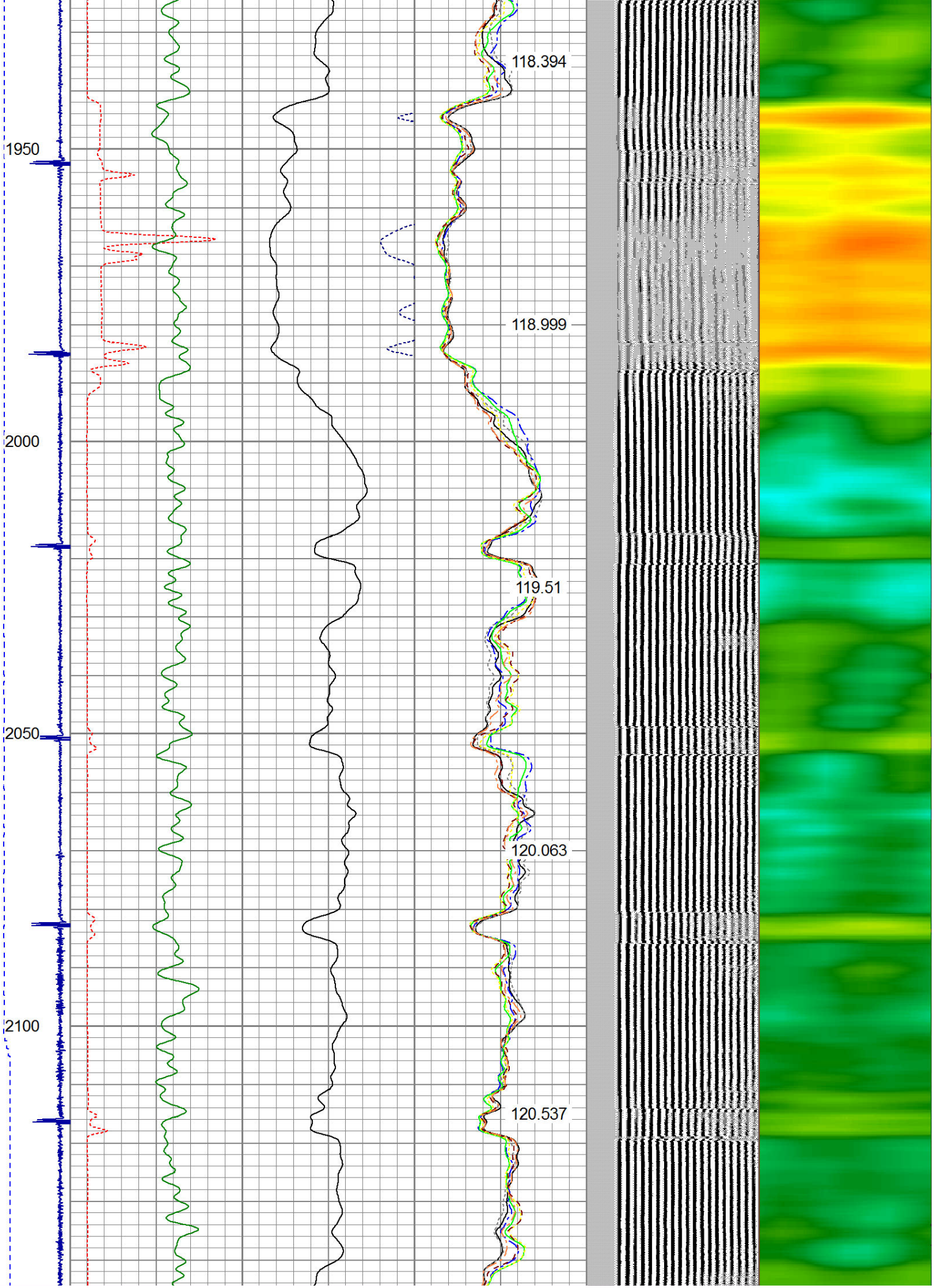




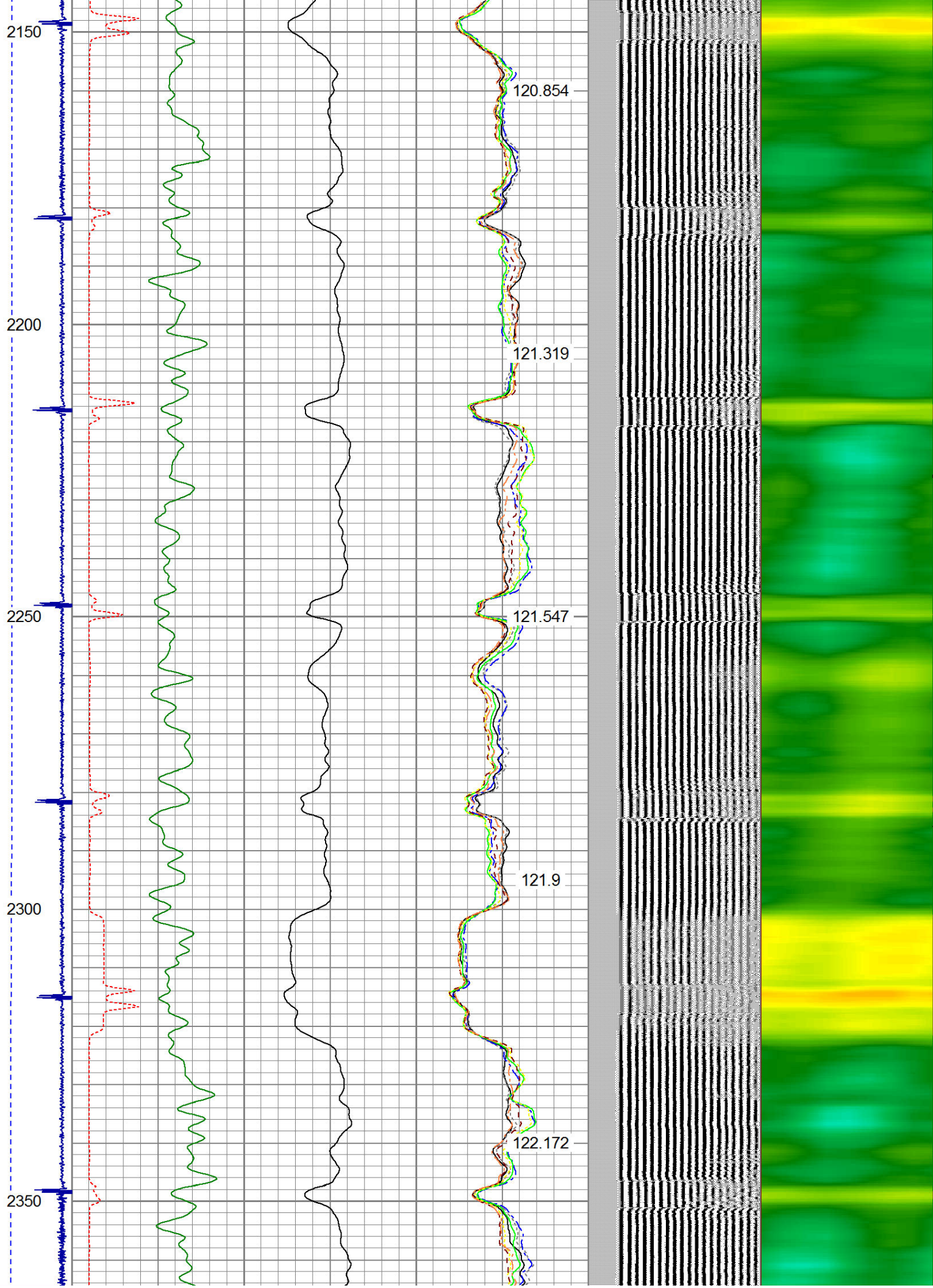




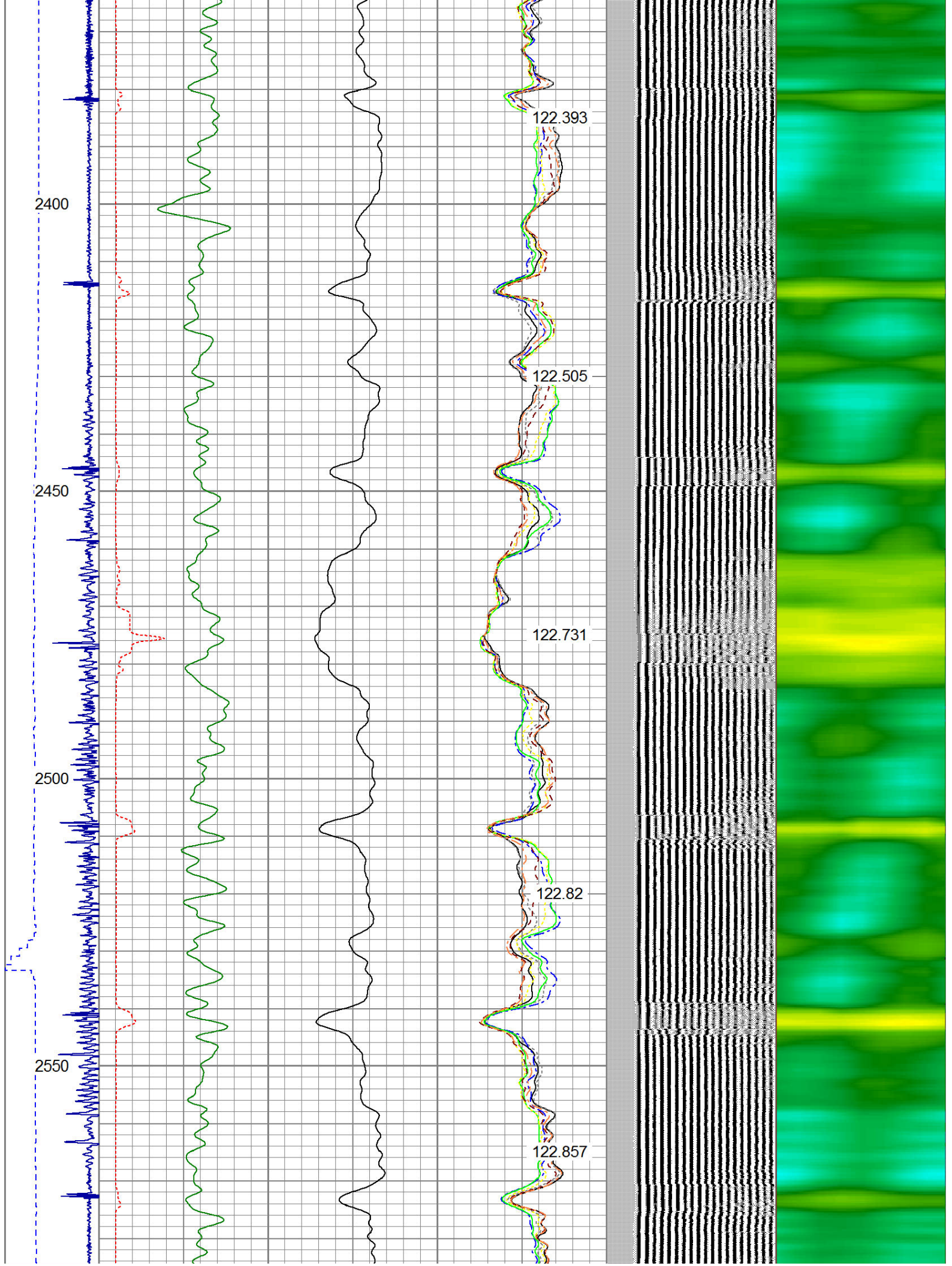




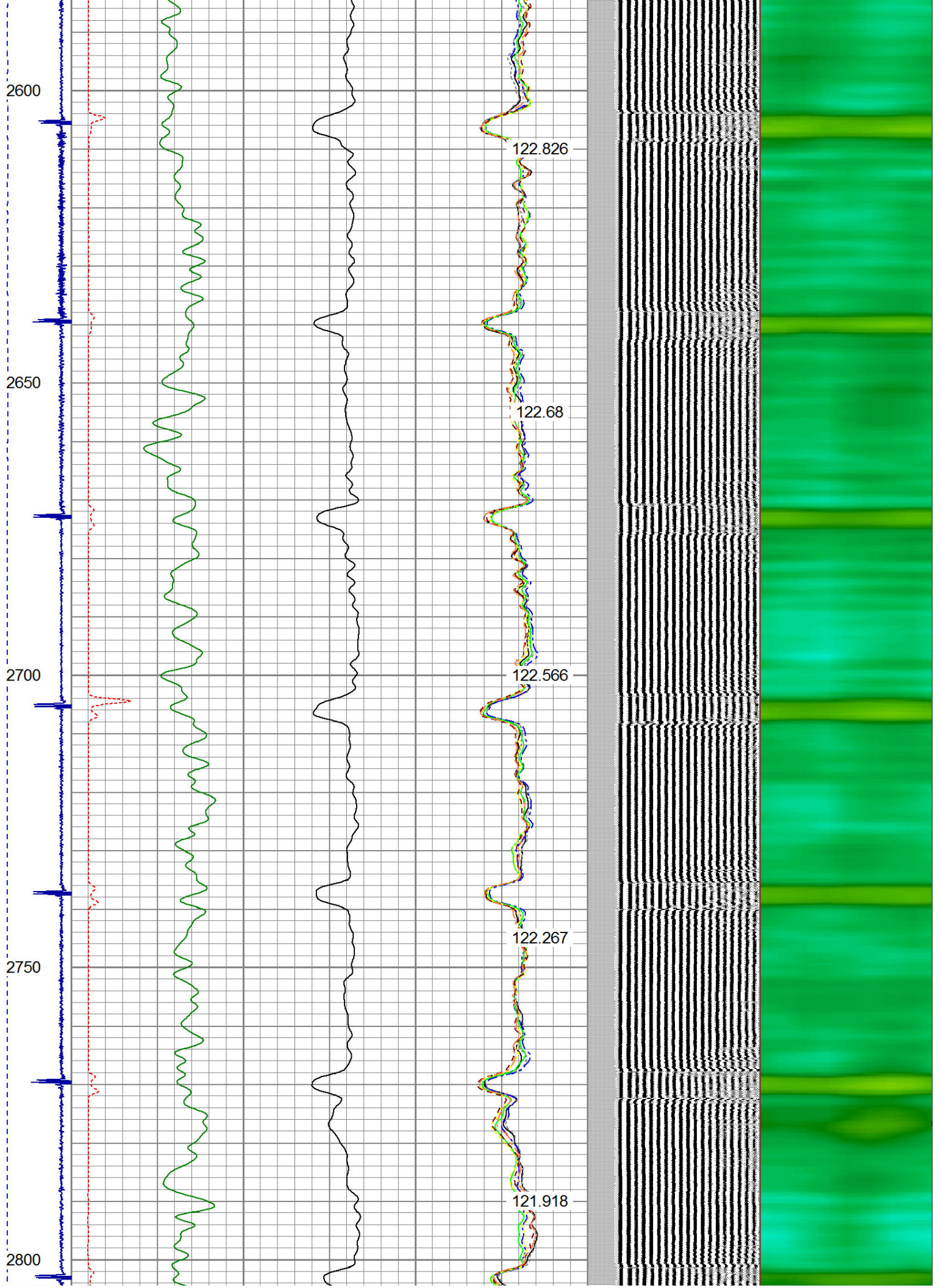




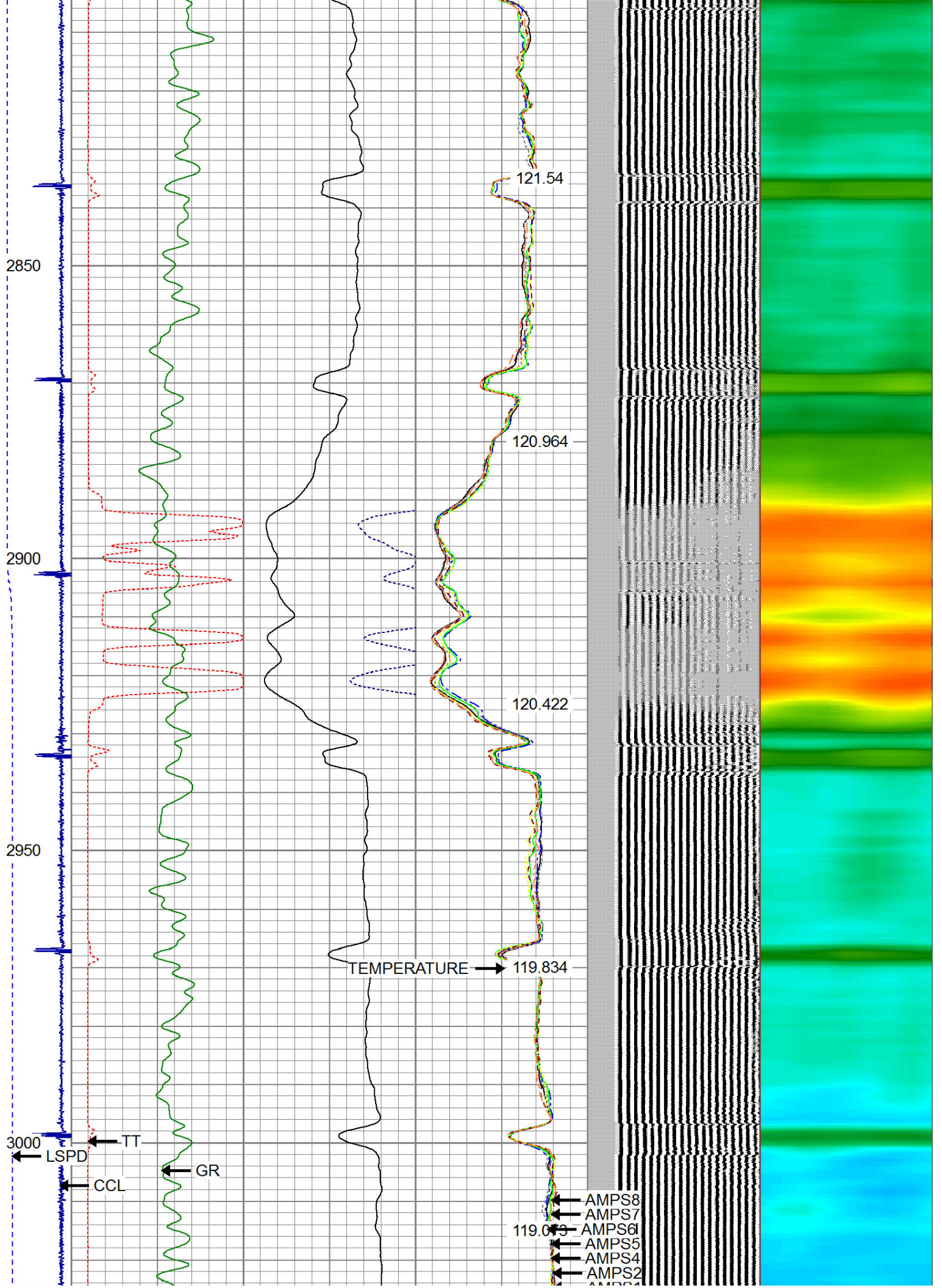




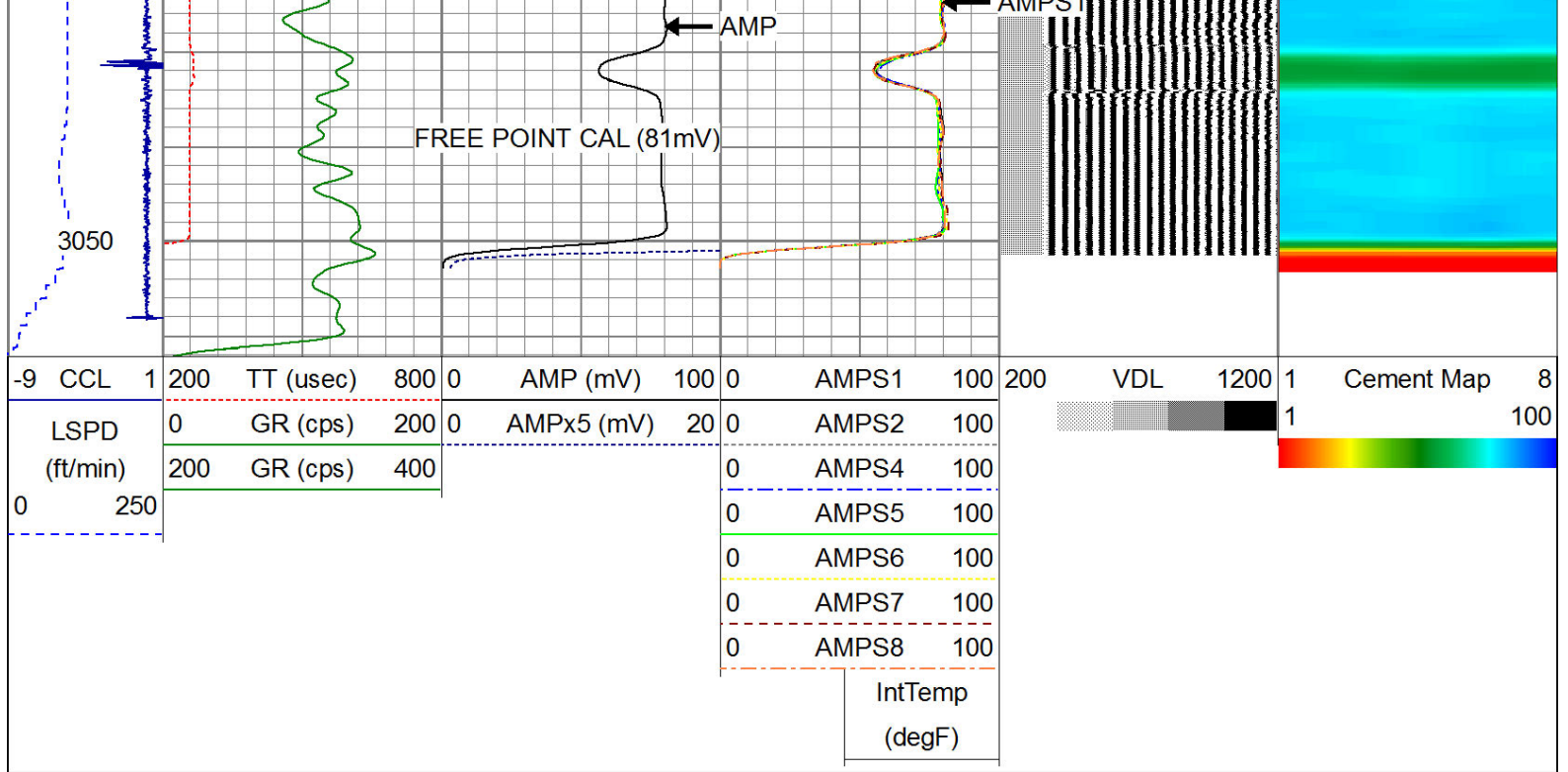












**WARRIOR**  
ENERGY SERVICES

Company KERR MCGEE OIL AND GAS  
Well MUSE 1  
Field WATTENBERG  
County WELD  
State COLORADO