



Kerr-McGee Oil & Gas Onshore LP

A subsidiary of Anadarko Petroleum Corporation

1099 18th Street
Denver, CO 80202
720-929-6000

February 20, 2015

Matt Lepore
Director, Colorado Oil and Gas Conservation Commission
Department of Natural Resources
The Chancery Building
1120 Lincoln Street, Suite 801
Denver, CO 80203

Re: **30 Day Certification Letter - 318A.e**
CARTER 35N-33HZ (Doc # 400789516)
Township 2 North, Range 66 West
Section 33: NENW
Unit Acreage: 480
Unit Spacing: 01N-66W-Sec 04 N2NW
02N-66W-Sec 28 S2SW; Sec 33 W2
Weld County, Colorado

Dear Mr. Lepore:

Kerr-McGee Oil and Gas Onshore LP ("KMG") hereby certifies that a thirty (30) day notice has been given by certified mail to all mineral owners in the proposed wellbore spacing unit. We have not received any objections to such well location, proposed spacing unit, or additional producing formation. KMG hereby respectfully requests approval of this boundary well.

If you have any questions or issues regarding this permit, please contact Cheryl Light at (720) 929-6461.

Very truly yours,

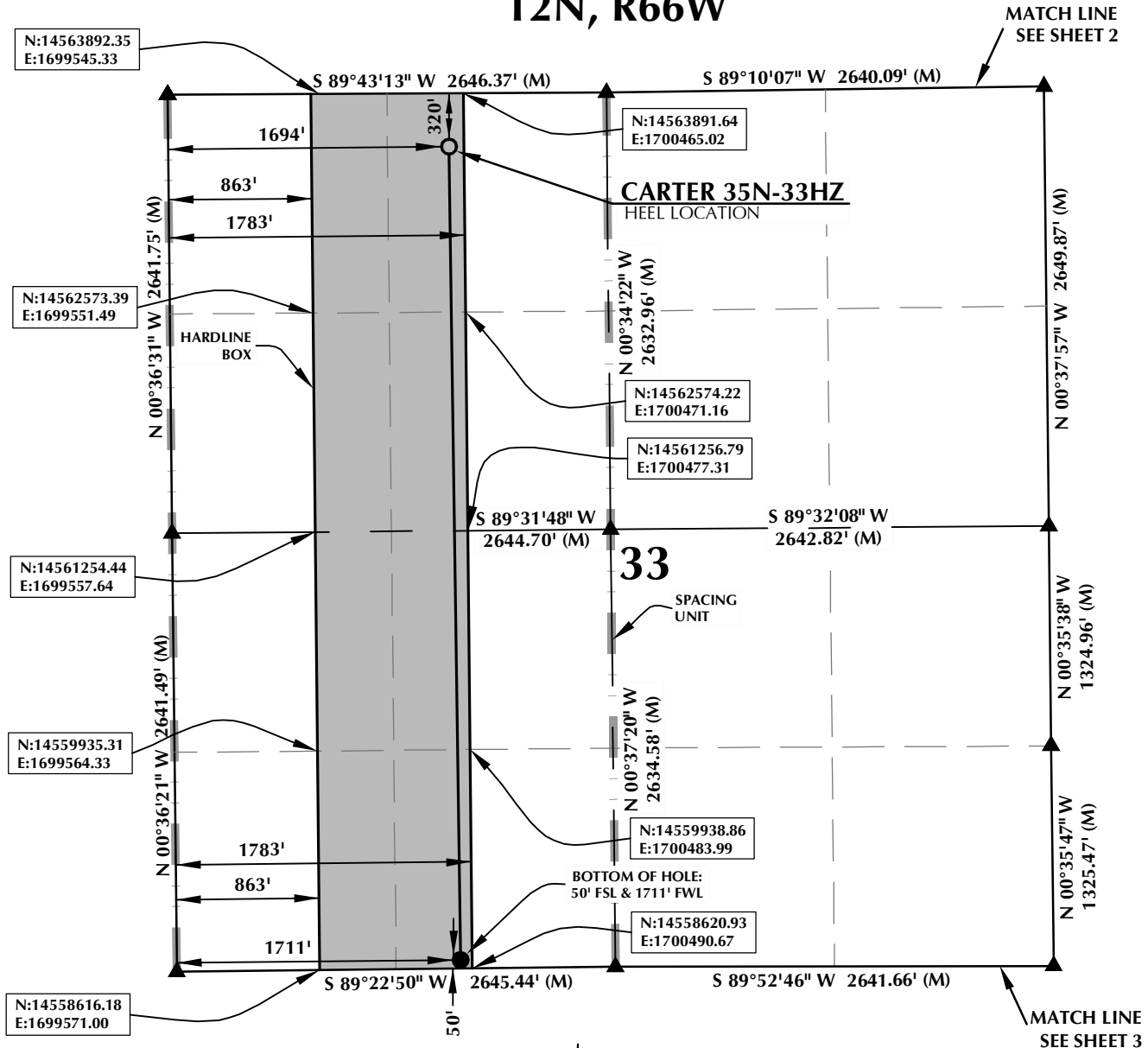
Kerr-McGee Oil and Gas Onshore LP

A blue ink signature of Craig Richardson, consisting of a stylized 'C' followed by a horizontal line.

Craig Richardson
Regulatory Analyst II

Enclosure

SPACING UNIT: CARTER 35N-33HZ T2N, R66W



HEEL LOCATION
N: 14,563,571.83'
E: 1,700,377.48'

LATITUDE= 40.100966°
LONGITUDE= -104.785577°

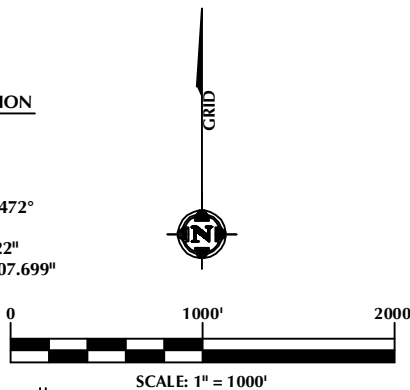
LATITUDE= 40°06'03.477"
LONGITUDE= -104°47'08.078"

AVAILABLE FOOTAGE
6952'

BOTTOM HOLE LOCATION
N: 14,558,670.56'
E: 1,700,418.72'

LATITUDE= 40.087506°
LONGITUDE= -104.785472°

LATITUDE= 40°05'15.022"
LONGITUDE= -104°47'07.699"



NOTES:

1. ▲ INDICATES FOUND SECTION CORNER
2. ● INDICATES CALCULATED CORNER
3. BEARINGS, DISTANCES, AND OFFSETS ARE BASED ON COLORADO COORDINATE SYSTEM 1983, NORTH ZONE
4. COMBINED SCALE FACTOR: .99972633
5. N / E COORDINATES ARE BASED ON UTM COORDINATE SYSTEM NAD83, ZONE 13
6. LATITUDE AND LONGITUDE COORDINATES ARE NAD83 (CORS96)(EPOCH:2002)
7. THIS EXHIBIT DOES NOT REPRESENT A LAND SURVEY PLAT OR IMPROVEMENT SURVEY PLAT AS DEFINED BY C.R.S. 38-51-102 AND CANNOT BE RELIED UPON TO DETERMINE OWNERSHIP.

WELL PAD - CARTER 35C-33HZ

CARTER 35N-33HZ
SPACING UNIT EXHIBIT
320' FNL & 1694' FWL NENW (HEEL)
50' FSL & 1711' FWL SESW (BOTTOM)
LOCATED IN SECTION 33
T2N, R66W, 6TH P.M.
WELD COUNTY, COLORADO

**Kerr-McGee Oil &
Gas Onshore L.P.**
1099 18th Street
Denver, Colorado 80202



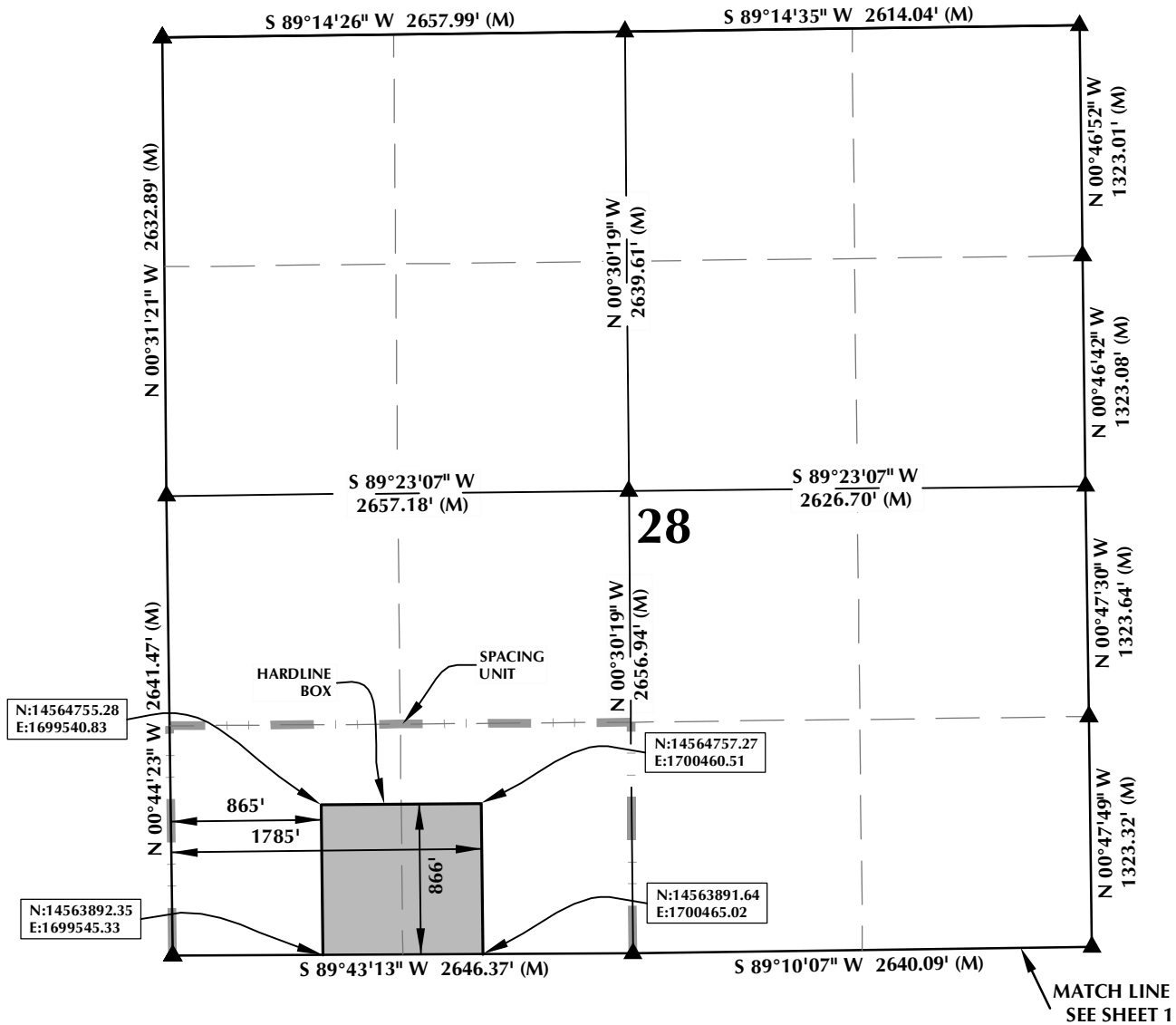
CONSULTING, LLC

SHERIDAN OFFICE
2155 North Main Street
Sheridan, Wyoming 82801
Phone 307-674-0609

LOVELAND OFFICE
1635 Foxtrail Drive, Suite 204
Loveland, Colorado 80538
Phone 970-776-4331

DRAFTED BY:	LMO	CHECKED BY:	BJR	SHEET NO:
DATE DRAFTED:	12/24/14	DATE SURVEYED:	10/4/14	1
REVISED:		FILE NAME:	14-77	1 OF 3

SPACING UNIT: CARTER 35N-33HZ T2N, R66W



HEEL LOCATION
N: 14,563,571.83'
E: 1,700,377.48'

LATITUDE= 40.100966°
LONGITUDE= -104.785577°

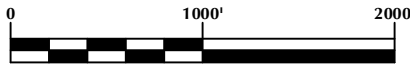
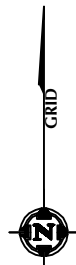
LATITUDE= 40°06'03.477"
LONGITUDE= -104°47'08.078"

AVAILABLE FOOTAGE
6952'

BOTTOM HOLE LOCATION
N: 14,558,670.56'
E: 1,700,418.72'

LATITUDE= 40.087506°
LONGITUDE= -104.785472°

LATITUDE= 40°05'15.022"
LONGITUDE= -104°47'07.699"



SCALE: 1" = 1000'

NOTES:

- ▲ INDICATES FOUND SECTION CORNER
- INDICATES CALCULATED CORNER
- BEARINGS, DISTANCES, AND OFFSETS ARE BASED ON COLORADO COORDINATE SYSTEM 1983, NORTH ZONE
- COMBINED SCALE FACTOR: .99972633
- N / E COORDINATES ARE BASED ON UTM COORDINATE SYSTEM NAD83, ZONE 13
- LATITUDE AND LONGITUDE COORDINATES ARE NAD83 (CORS96)(EPOCH:2002)
- THIS EXHIBIT DOES NOT REPRESENT A LAND SURVEY PLAT OR IMPROVEMENT SURVEY PLAT AS DEFINED BY C.R.S. 38-51-102 AND CANNOT BE RELIED UPON TO DETERMINE OWNERSHIP.

WELL PAD - CARTER 35C-33HZ

CARTER 35N-33HZ
SPACING UNIT EXHIBIT
320' FNL & 1694' FWL NENW (HEEL)
50' FSL & 1711' FWL SESW (BOTTOM)
LOCATED IN SECTION 33
T2N, R66W, 6TH P.M.
WELD COUNTY, COLORADO

**Kerr-McGee Oil &
Gas Onshore L.P.**
1099 18th Street
Denver, Colorado 80202



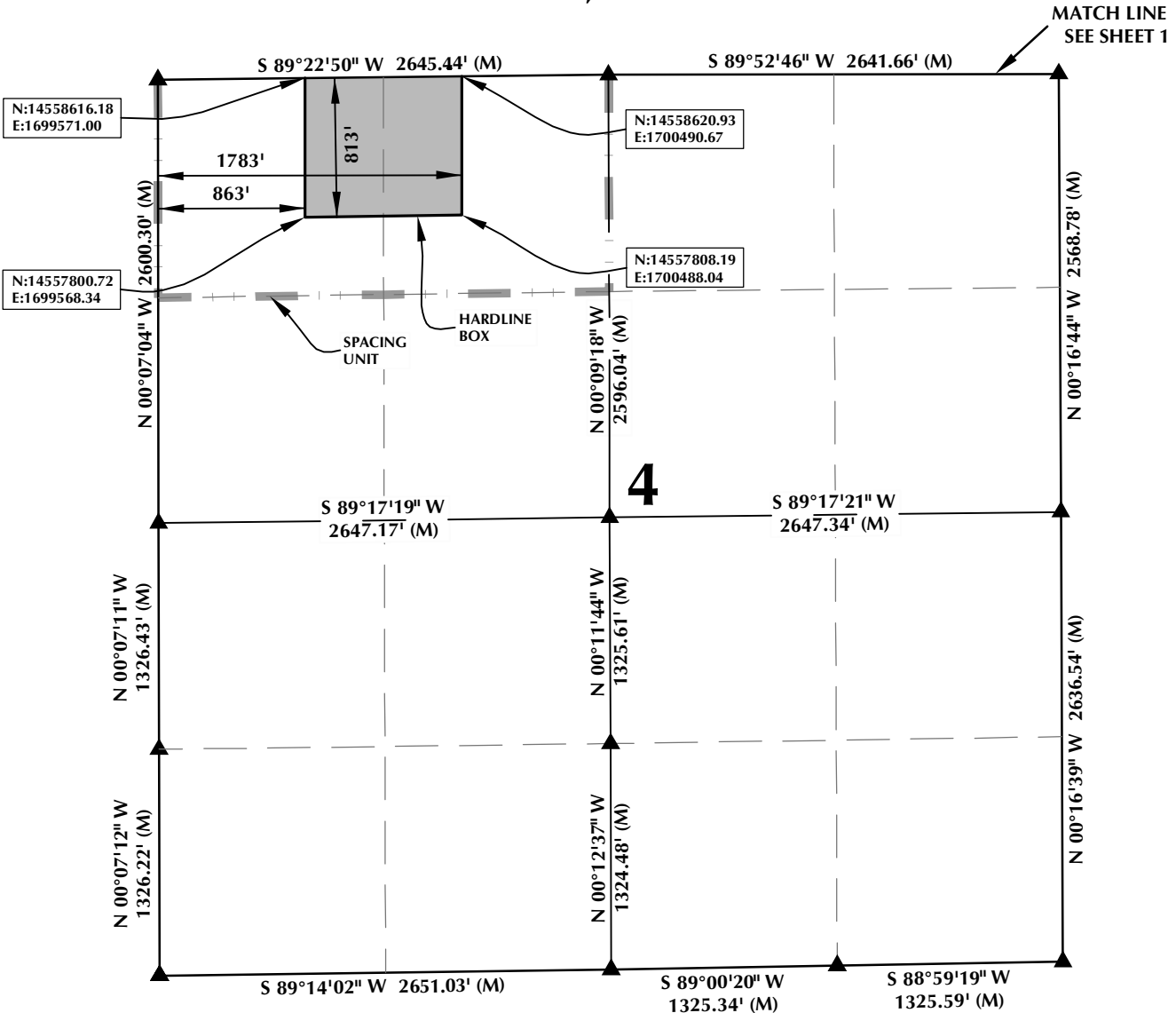
CONSULTING, LLC

SHERIDAN OFFICE
2155 North Main Street
Sheridan, Wyoming 82801
Phone 307-674-0609

LOVELAND OFFICE
1635 Foxtrail Drive, Suite 204
Loveland, Colorado 80538
Phone 970-776-4331

DRAFTED BY:	LMO	CHECKED BY:	BJR	SHEET NO:
DATE DRAFTED:	12/24/14	DATE SURVEYED:	10/4/14	2
REVISED:		FILE NAME:	14-77	2 OF 3

SPACING UNIT: CARTER 35N-33HZ T1N, R66W



HEEL LOCATION
N: 14,563,571.83'
E: 1,700,377.48'

LATITUDE= 40.100966°
LONGITUDE= -104.785577°

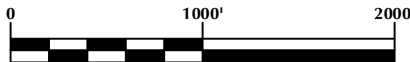
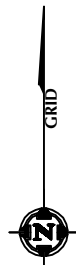
LATITUDE= 40°06'03.477"
LONGITUDE= -104°47'08.078"

AVAILABLE FOOTAGE
6952'

BOTTOM HOLE LOCATION
N: 14,558,670.56'
E: 1,700,418.72'

LATITUDE= 40.087506°
LONGITUDE= -104.785472°

LATITUDE= 40°05'15.022"
LONGITUDE= -104°47'07.699"



SCALE: 1" = 1000'

NOTES:

- ▲ INDICATES FOUND SECTION CORNER
- INDICATES CALCULATED CORNER
- BEARINGS, DISTANCES, AND OFFSETS ARE BASED ON COLORADO COORDINATE SYSTEM 1983, NORTH ZONE
- COMBINED SCALE FACTOR: .99972633
- N / E COORDINATES ARE BASED ON UTM COORDINATE SYSTEM NAD83, ZONE 13
- LATITUDE AND LONGITUDE COORDINATES ARE NAD83 (CORS96)(EPOCH:2002)
- THIS EXHIBIT DOES NOT REPRESENT A LAND SURVEY PLAT OR IMPROVEMENT SURVEY PLAT AS DEFINED BY C.R.S. 38-51-102 AND CANNOT BE RELIED UPON TO DETERMINE OWNERSHIP.

WELL PAD - CARTER 35C-33HZ

CARTER 35N-33HZ
SPACING UNIT EXHIBIT
320' FNL & 1694' FWL NENW (HEEL)
50' FSL & 1711' FWL SESW (BOTTOM)
LOCATED IN SECTION 33
T2N, R66W, 6TH P.M.
WELD COUNTY, COLORADO

**Kerr-McGee Oil &
Gas Onshore L.P.**
1099 18th Street
Denver, Colorado 80202



CONSULTING, LLC

SHERIDAN OFFICE
2155 North Main Street
Sheridan, Wyoming 82801
Phone 307-674-0609

LOVELAND OFFICE
1635 Foxtrail Drive, Suite 204
Loveland, Colorado 80538
Phone 970-776-4331

DRAFTED BY:	LMO	CHECKED BY:	BJR	SHEET NO:
DATE DRAFTED:	12/24/14	DATE SURVEYED:	10/4/14	3
REVISED:		FILE NAME:	14-77	3 OF 3