

PROCEED IN A WESTERLY DIRECTION FROM HEREFORD COLORADO ALONG COUNTY ROAD #136 APPROXIMATELY 4.6 MILES TO THE JUNCTION OF THIS ROAD AND COUNTY ROAD #71 TO THE NORTH; TURN RIGHT AND PROCEED IN A NORTHERLY DIRECTION APPROXIMATELY 0.5 MILES TO THE JUNCTION OF THIS ROAD AND COUNTY ROAD #136.5 TO THE WEST; TURN LEFT AND PROCEED IN A WESTERLY, THEN SOUTHWESTERLY DIRECTION APPROXIMATELY 1.7 MILES TO THE JUNCTION OF THIS ROAD AND AN EXISTING ROAD TO THE WEST; TURN RIGHT AND PROCEED IN A WESTERLY, THEN SOUTHWESTERLY DIRECTION APPROXIMATELY 1.3 MILES TO THE BEGINNING OF THE PROPOSED ACCESS ROAD TO THE WEST; FOLLOW ROAD FLAGS IN A WESTERLY, THEN SOUTHWESTERLY DIRECTION APPROXIMATELY 1,016' TO THE PROPOSED LOCATION.

TOTAL DISTANCE FROM HEREFORD, COLORADO TO THE PROPOSED LOCATION IS APPROXIMATELY 8.3 MILES

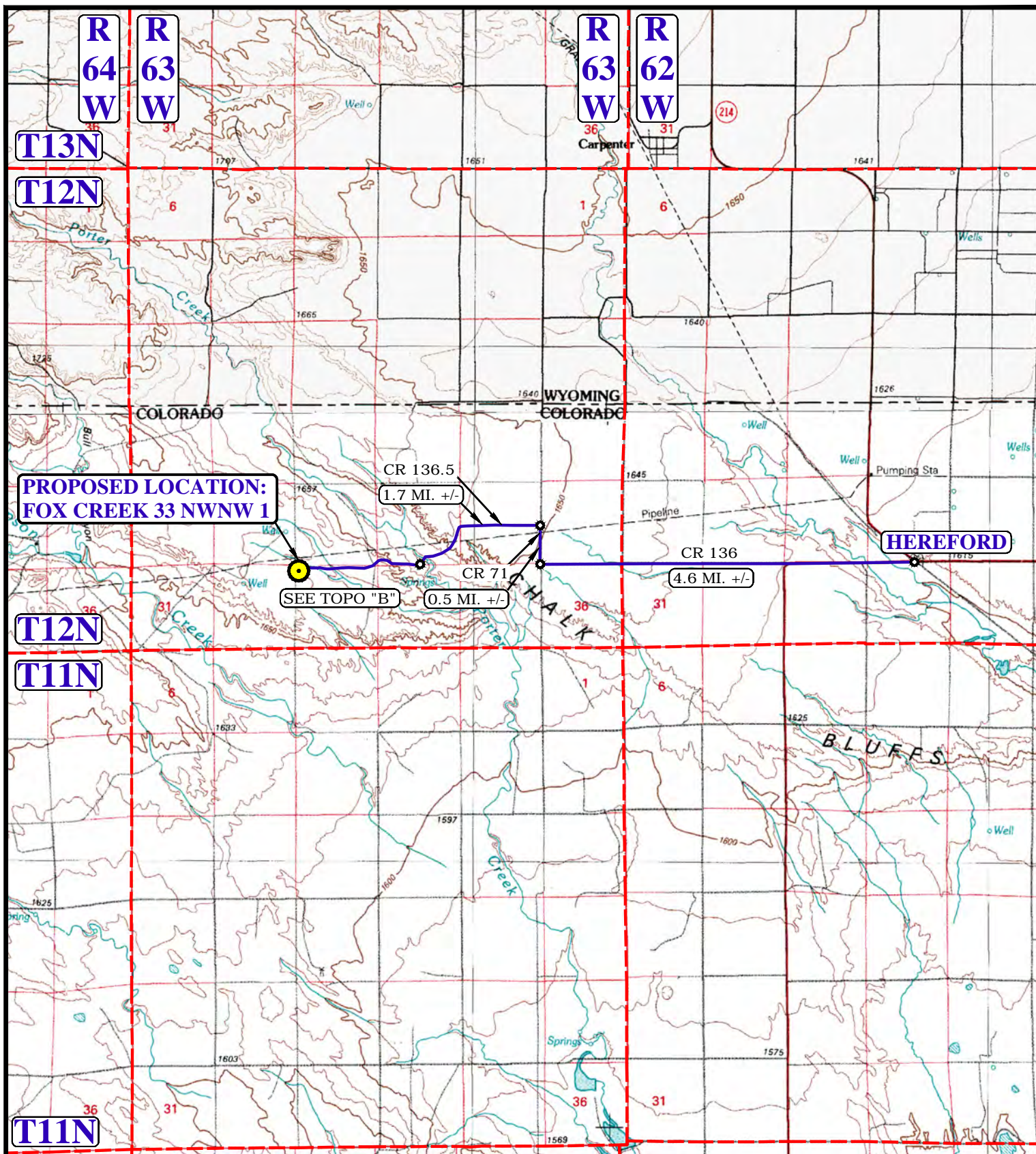
EOG RESOURCES, INC.

**FOX CREEK 33 NWNW 1
SECTION 33, T12N, R63W, 6th P.M.
NW 1/4 NW 1/4**



UELS, LLC
Corporate Office * 85 South 200 East
Vernal, UT 84078 * (435) 789-1017

DRAWN BY: J.M.F	DATE DRAWN: 02-19-15
	REVISED: 00-00-00
ROAD DESCRIPTION	



LEGEND:

 PROPOSED LOCATION

EOG RESOURCES, INC.

**FOX CREEK 33 NWNW 1
SECTION 33, T12N, R63W, 6th P.M.
NW 1/4 NW 1/4**

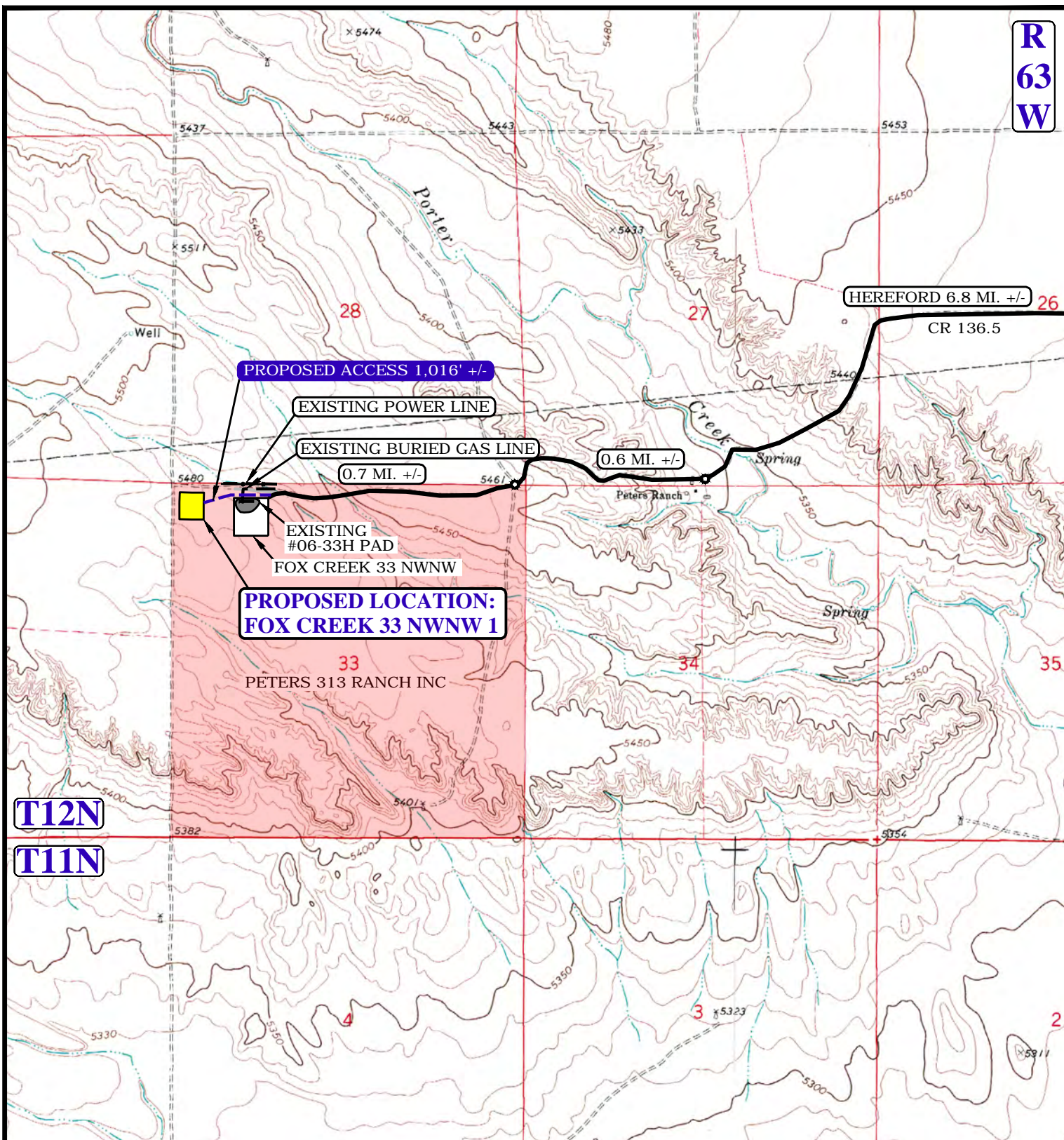


UELS, LLC
Corporate Office * 85 South 200 East
Vernal, UT 84078 * (435) 789-1017



DRAWN BY: J.M.F.	DATE DRAWN: 02-19-15
SCALE: 1:100,000	REVISED: 00-00-00
ACCESS ROAD MAP	TOPO A

**R
63
W**



NOTE: PARCEL DATA SHOWN HAS BEEN OBTAINED FROM VARIOUS SOURCES AND SHOULD BE USED FOR MAPPING, GRAPHIC AND PLANNING PURPOSES ONLY. NO WARRANTY IS MADE BY UINTAH ENGINEERING AND LAND SURVEYING (UELS) FOR ACCURACY OF THE PARCEL DATA.

LEGEND:

- EXISTING ROAD
- - - EXISTING 2-TRACK
- PROPOSED ROAD
- * - * - EXISTING FENCE
- - - EXISTING POWER LINE
- * - * - EXISTING BURIED GAS LINE

EOG RESOURCES, INC.

**FOX CREEK 33 NWNW 1
SECTION 33, T12N, R63W, 6th P.M.
NW 1/4 NW 1/4**



UELS, LLC
Corporate Office * 85 South 200 East
Vernal, UT 84078 * (435) 789-1017

DRAWN BY: J.M.F.

DATE DRAWN: 02-19-15

SCALE: 1" = 2000'

REVISED: 00-00-00

ACCESS ROAD MAP

TOPO B