

Revised by Upstream Petroleum Management, Inc.

NOTE: PARCEL DATA SHOWN HAS BEEN OBTAINED FROM VARIOUS SOURCES AND SHOULD BE USED FOR MAPPING, GRAPHIC AND PLANNING PURPOSES ONLY. NO WARRANTY IS MADE BY UINTAH ENGINEERING AND LAND SURVEYING (UELS) FOR ACCURACY OF THE PARCEL DATA.

LEGEND:



GRMR OIL & GAS

MYERS #19-11HA
SECTION 19, T5N, R90W, 6th P.M.
1663' FSL 1472' FWL

DRAWN BY: J.D.J.

DATE DRAWN: 10-21-14

SCALE: 1" = 2000'

REVISED: 12-08-14

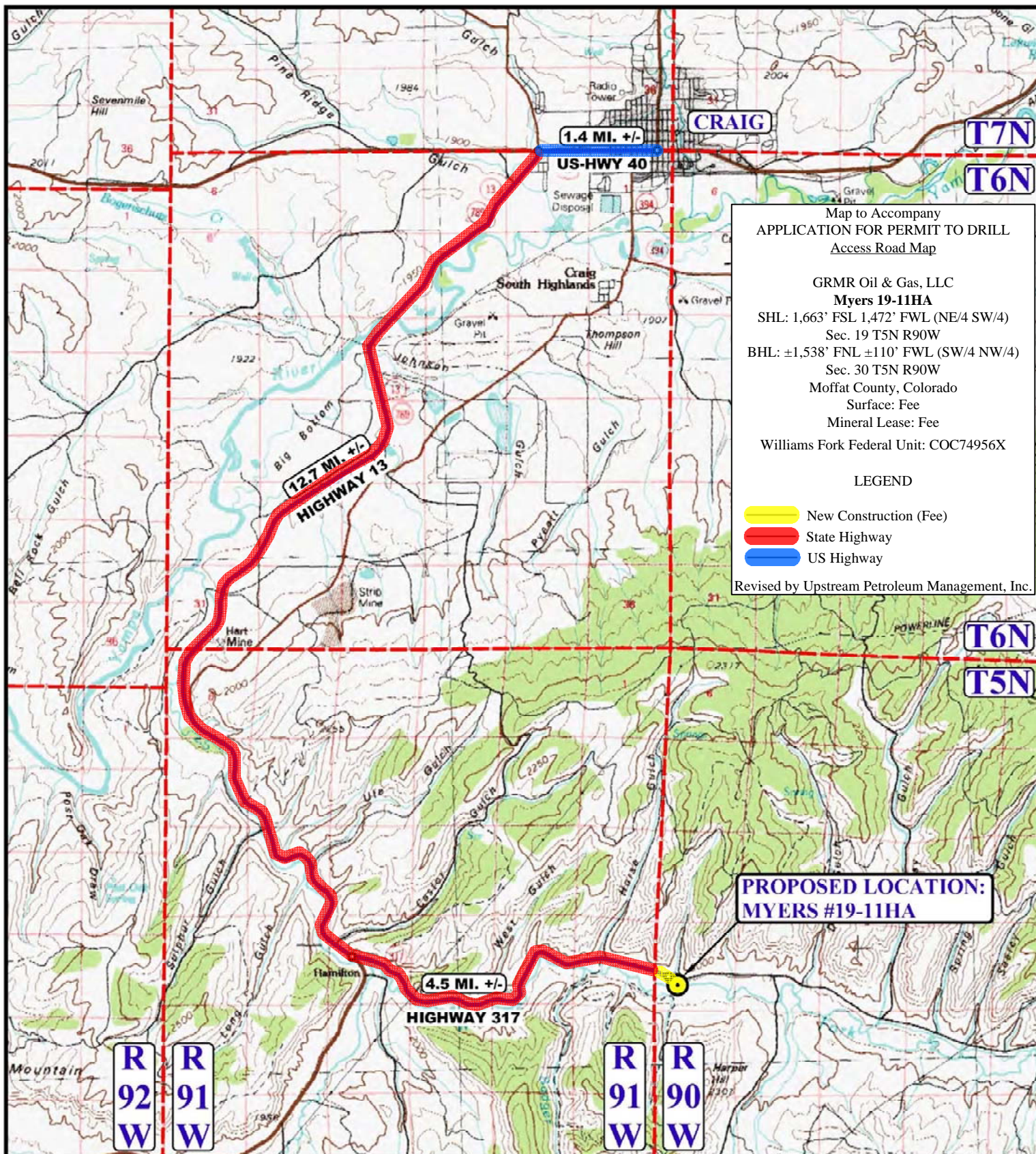
ACCESS ROAD MAP

TOPO B



UELS, LLC
Corporate Office * 85 South 200 East
Vernal, UT 84078 * (435) 789-1017





LEGEND:

- PROPOSED LOCATION
- ACCESS ROAD



UELS, LLC
Corporate Office * 85 South 200 East
Vernal, UT 84078 * (435) 789-1017



GRMR OIL & GAS

MYERS #19-11HA
SECTION 19, T5N, R90W, 6th P.M.
1663' FSL 1472' FWL

DRAWN BY: J.D.J.
SCALE: 1:100,000

DATE DRAWN: 10-21-14
REVISED: 12-08-14

ACCESS ROAD MAP

TOPO A