

FINISHED GRADE ELEVATION = 6343.7'

NOTES:

- Flare Pit is to be located a min. of 100' from the wellhead.
- Round corners at 35' radius or as needed.
- Construct diversion ditches as needed.
- Contours shown at 2' intervals.

GRMR OIL & GAS

MYERS #19-11HA
SECTION 19, T5N, R90W, 6th P.M.
1663' FSL 1472' FWL



UELS, LLC
Corporate Office * 85 South 200 East
Vernal, UT 84078 * (435) 789-1017

DRAWN BY: M.O.B.

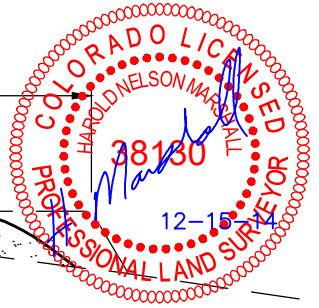
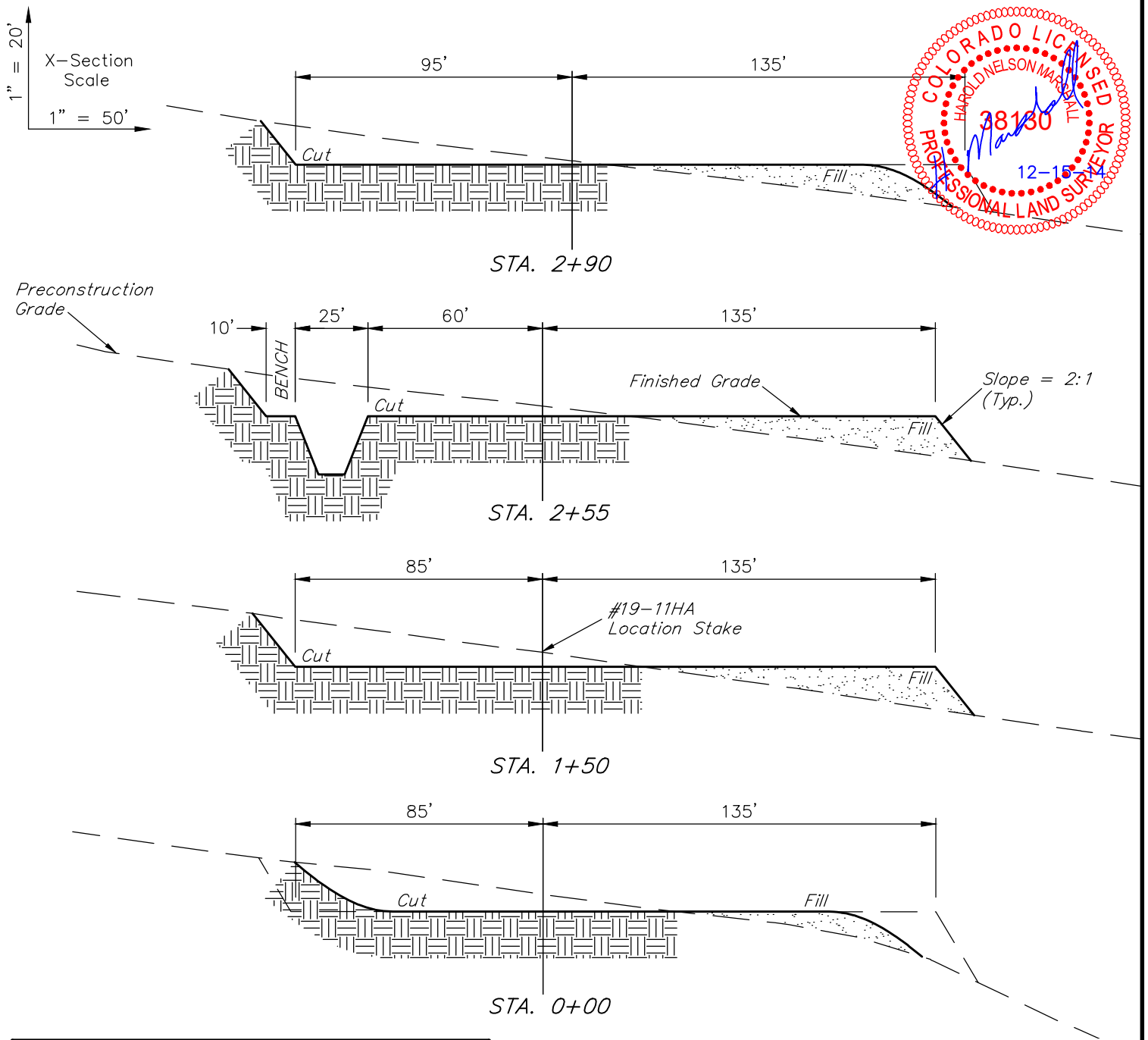
DATE DRAWN: 10-13-14

SCALE: 1" = 50'

REVISED: 12-04-14 M.O.B.

CONSTRUCTION LAYOUT

FIGURE #1



APPROXIMATE EARTHWORK QUANTITIES	
(6") TOPSOIL STRIPPING	1,380 Cu. Yds.
REMAINING LOCATION	4,260 Cu. Yds.
TOTAL CUT	5,640 Cu. Yds.
FILL	4,160 Cu. Yds.
EXCESS MATERIAL	1,480 Cu. Yds.
TOPSOIL & PIT BACKFILL (1/2 Pit Vol.)	1,480 Cu. Yds.
EXCESS UNBALANCE (After Interim Rehabilitation)	0 Cu. Yds.

APPROXIMATE SURFACE DISTURBANCE AREAS		
	DISTANCE	ACRES
WELL SITE DISTURBANCE	NA	±1.864
30' WIDE ACCESS ROAD R-O-W DISTURBANCE	±817'	±0.563
TOTAL SURFACE USE AREA		±2.427

NOTES:

- Fill quantity includes 5% for compaction.
- Calculations based on 6" of topsoil stripping.
- Topsoil should not be stripped below finished grade on substructure area.

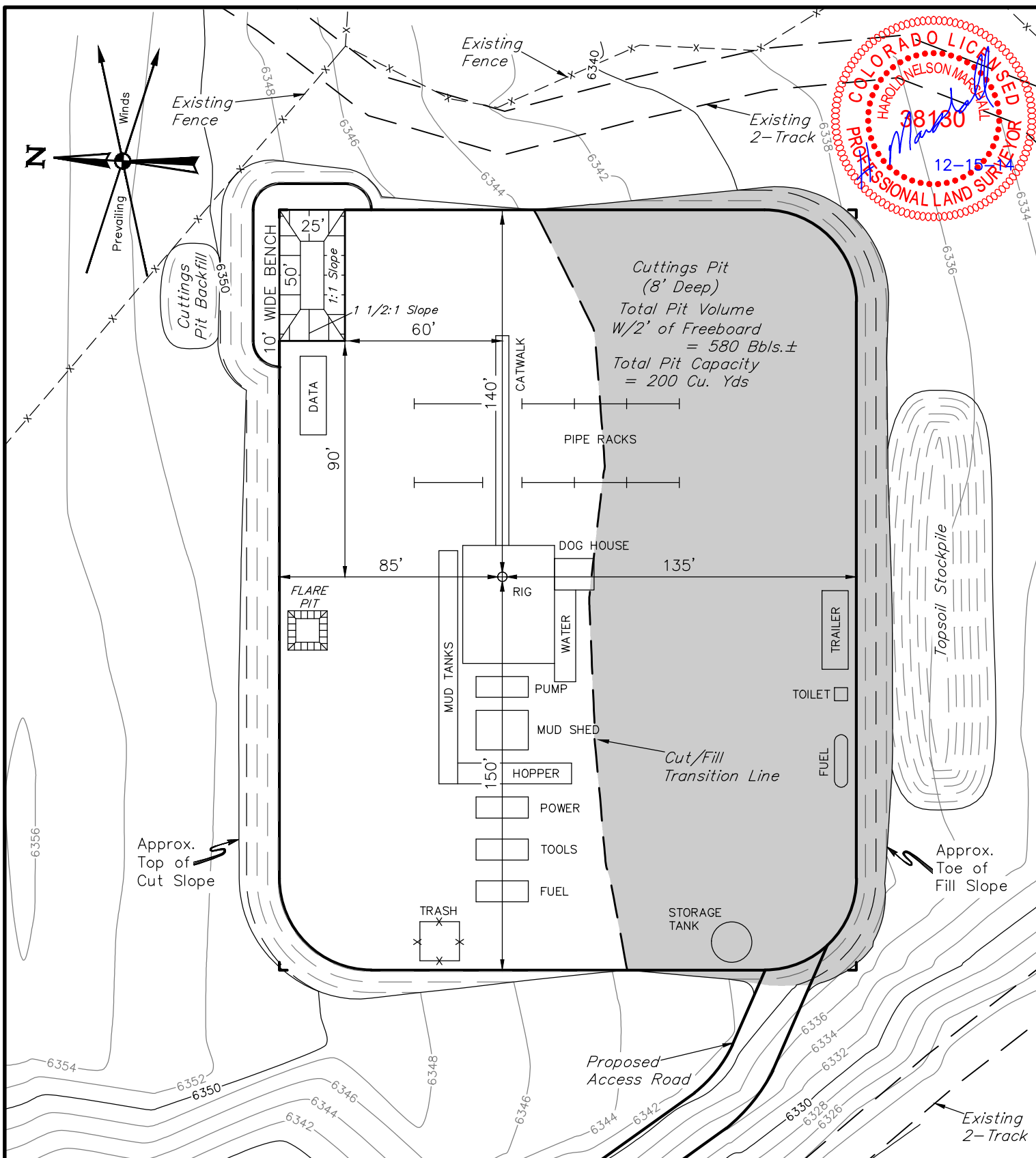
GRMR OIL & GAS

MYERS #19-11HA
SECTION 19, T5N, R90W, 6th P.M.
1663' FSL 1472' FWL



UELS, LLC
 Corporate Office * 85 South 200 East
 Vernal, UT 84078 * (435) 789-1017

DRAWN BY: M.O.B.	DATE DRAWN: 10-13-14
SCALE: AS SHOWN	REVISED: 12-04-14 M.O.B.
CONSTRUCTION LAYOUT CROSS SECTIONS	FIGURE #2



NOTES:

- Flare Pit is to be located a min. of 100' from the wellhead.
- Contours shown at 2' intervals.

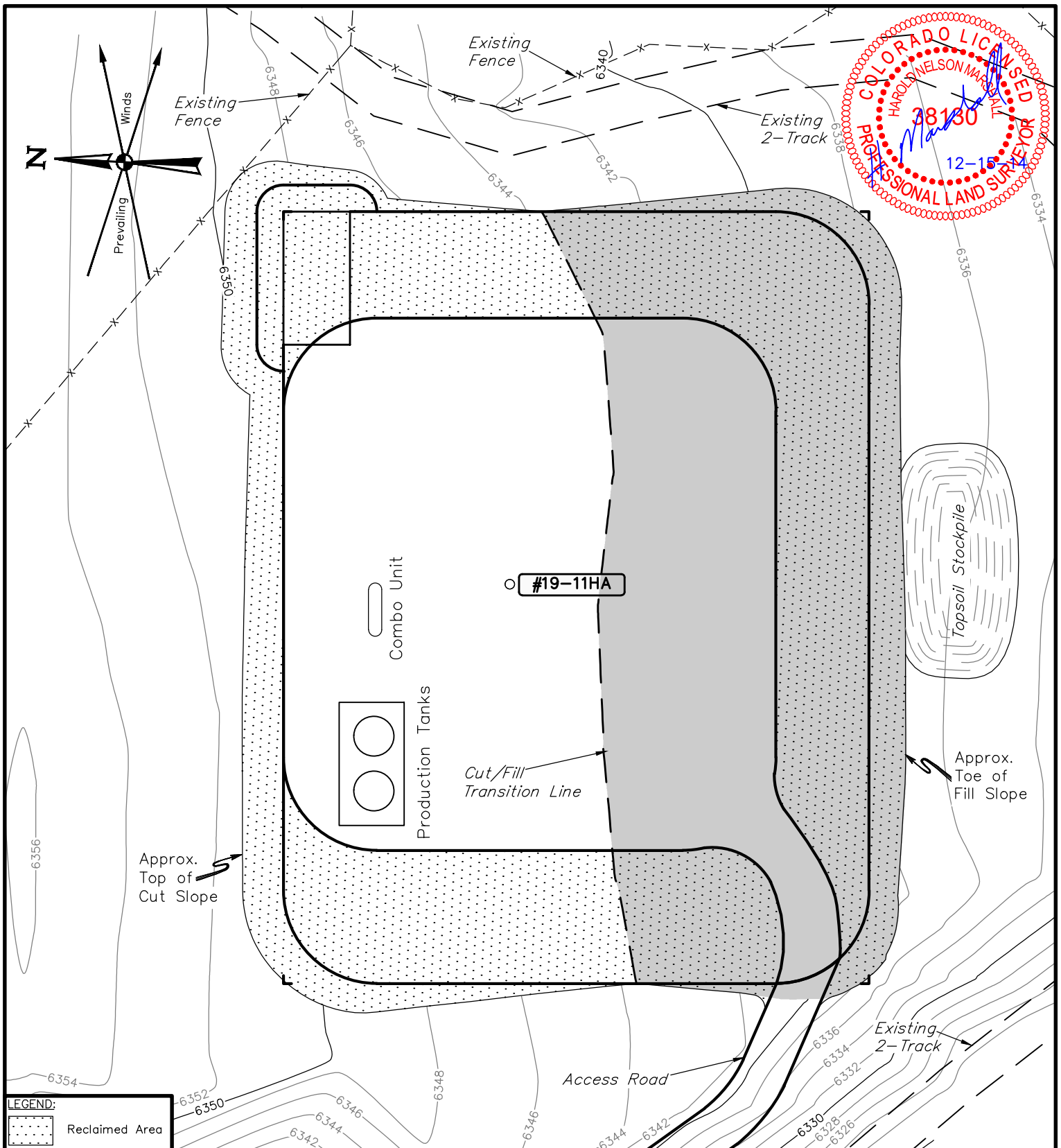
GRMR OIL & GAS

MYERS #19-11HA
SECTION 19, T5N, R90W, 6th P.M.
1663' FSL 1472' FWL



UELS, LLC
 Corporate Office * 85 South 200 East
 Vernal, UT 84078 * (435) 789-1017

DRAWN BY: M.O.B.	DATE DRAWN: 10-13-14
SCALE: 1" = 50'	REVISED: 12-04-14 M.O.B.
TYPICAL RIG LAYOUT	FIGURE #3



NOTES:

- Contours shown at 2' intervals.

GRMR OIL & GAS

**MYERS #19-11HA
SECTION 19, T5N, R90W, 6th P.M.
1663' FSL 1472' FWL**



UELS, LLC
Corporate Office * 85 South 200 East
Vernal, UT 84078 * (435) 789-1017

DRAWN BY: M.O.B.	DATE DRAWN: 10-13-14
SCALE: 1" = 50'	REVISED: 12-04-14 M.O.B.
INTERIM RECLAMATION PLAN	FIGURE #4