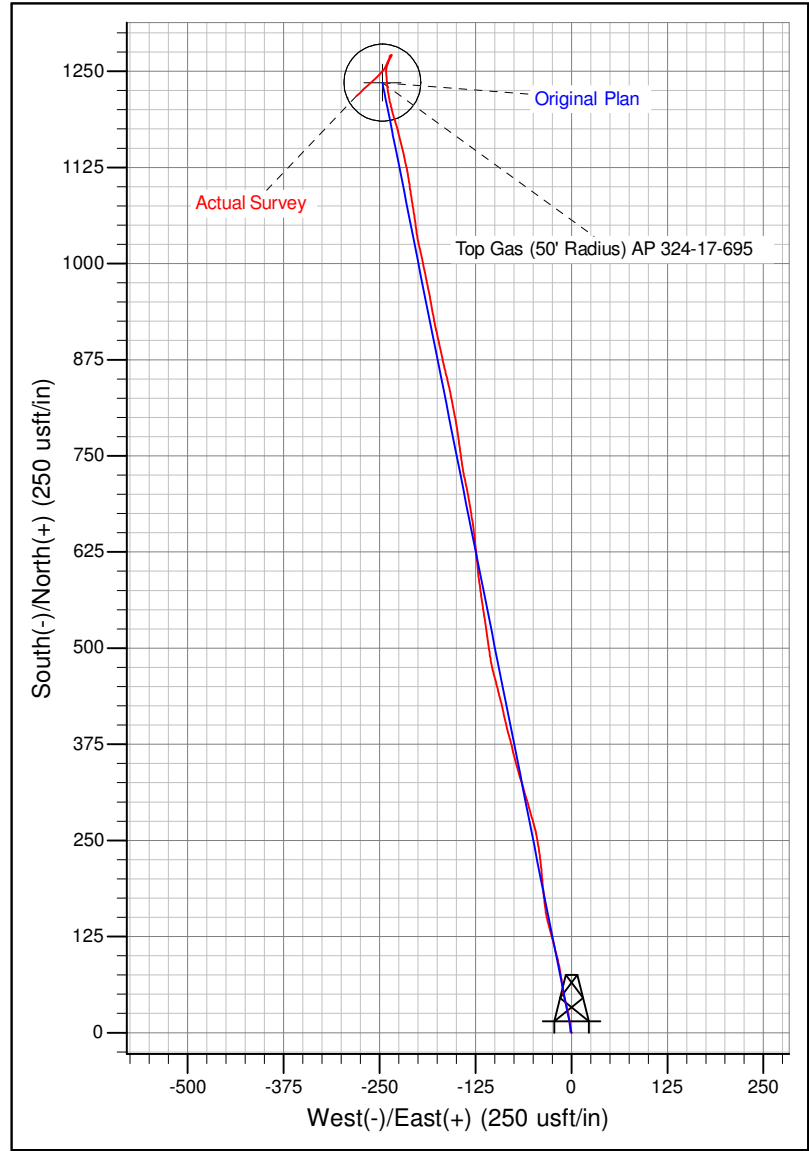
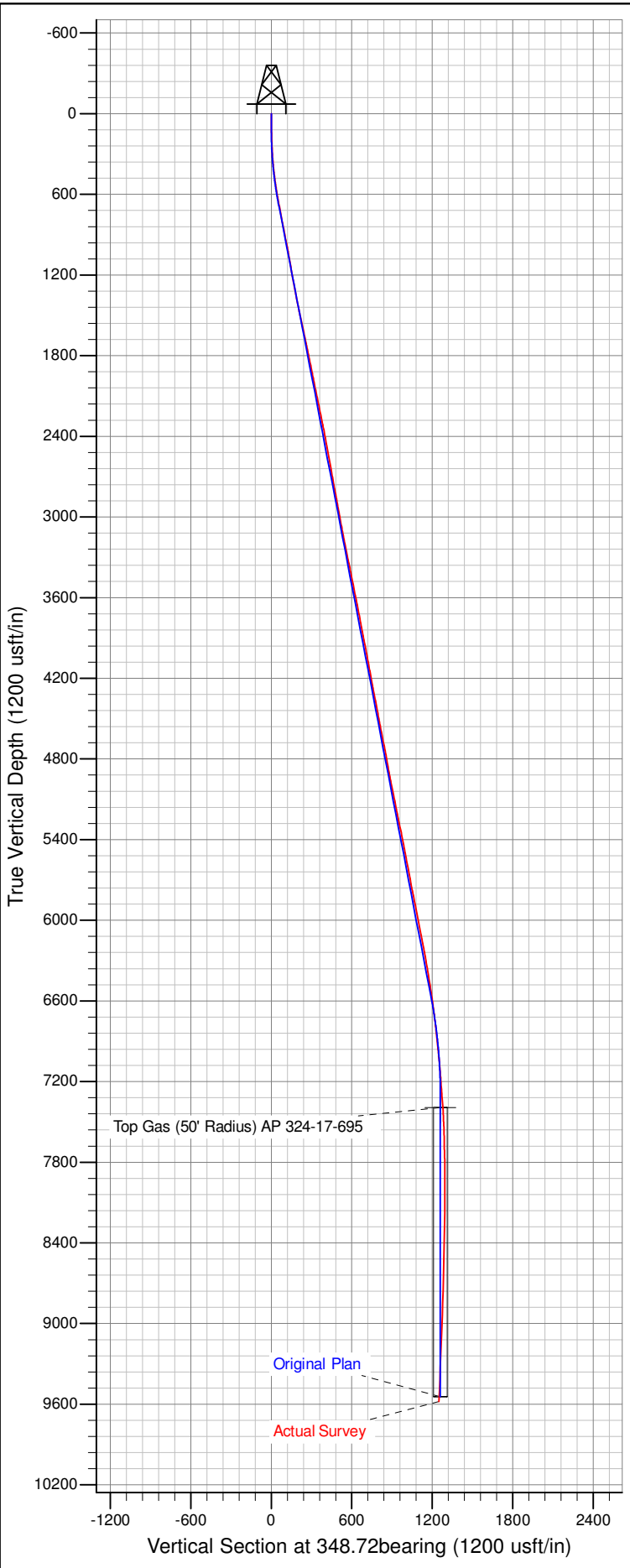




Well Name: AP 324-17-695
 Surface Location: AP 21-20-695 Pad
 North American Datum 1983 , US State Plane 1983 , Colorado Central Zone
 Ground Elevation: 6909.00

+N/-S	+E/-W	Northing	Easting	Latitude	Longitude	Slot
0.00	0.00	1623294.00	2288325.37	39.51759	-108.02297	B10

KELLY BUSHING @ 6935.00usft (Nabors 573 (26' RKB) kjs)



Azimuths to True North
 Magnetic North: 9.95°
 Magnetic Field
 Strength: 51929.2snT
 Dip Angle: 65.66°
 Date: 8/23/2014
 Model: IGRF2010