

WPX ENERGY ROCKY MOUNTAIN LLC-EBUS

AP 324-17-695

Nabors 573

Post Job Summary

Cement Surface Casing

Date Prepared: 8/29/2014

Job Date: 8/27/2014

Submitted by: Tony Eschete - Cement Engineer

The Road to Excellence Starts with Safety

Sold To #: 300721	Ship To #: 3123293	Quote #:	Sales Order #: 0901613117
Customer: WPX ENERGY ROCKY MOUNTAIN LLC-EBUS		Customer Rep: BEAUDE OAKS	
Well Name: AP		Well #: 324-17-695	API/UWI #: 05-045-21391-00
Field: PARACHUTE	City (SAP): PARACHUTE	County/Parish: GARFIELD	State: COLORADO
Legal Description: NE NW-20-6S-95W-40FNL-2490FWL			
Contractor: NABORS DRLG		Rig/Platform Name/Num: NABORS 573	
Job BOM: 7521			
Well Type: DIRECTIONAL GAS			
Sales Person: HALAMERICA\HB50180		Srvc Supervisor: Thomas Ponder	
Job			

Formation Name			
Formation Depth (MD)	Top		Bottom
Form Type	BHST		
Job depth MD	2541ft		Job Depth TVD
Water Depth			Wk Ht Above Floor 5FT
Perforation Depth (MD)	From		To

Well Data										
Description	New / Used	Size in	ID in	Weight lbm/ft	Thread	Grade	Top MD ft	Bottom MD ft	Top TVD ft	Bottom TVD ft
Casing		9.625	9.001	32.3		H-40	0	2541		0
Open Hole Section			13.5				0	2551	0	0

Tools and Accessories									
Type	Size in	Qty	Make	Depth ft		Type	Size in	Qty	Make
Guide Shoe	9.625	1	WTF	2541		Top Plug	9.625	1	HES
Float Shoe	9.625	1				Bottom Plug	9.625	0	HES
Float Collar	9.625	1	WTF	2494.3		SSR plug set	9.625	0	HES
Insert Float	9.625	1				Plug Container	9.625	1	HES
Stage Tool	9.625	1				Centralizers	9.625	0	HES

Miscellaneous Materials											
Gelling Agt		Conc		Surfactant		Conc		Acid Type		Qty	Conc
Treatment Fld		Conc		Inhibitor		Conc		Sand Type		Size	Qty

Fluid Data										
Stage/Plug #: 1										
Fluid #	Stage Type	Fluid Name	Qty	Qty UoM	Mixing Density lbm/gal	Yield ft3/sack	Mix Fluid Gal	Rate bbl/min	Total Mix Fluid Gal	
1	Fresh Water	Fresh Water	20	bbl	8.34			4		
Fluid #	Stage Type	Fluid Name	Qty	Qty UoM	Mixing Density lbm/gal	Yield ft3/sack	Mix Fluid Gal	Rate bbl/min	Total Mix Fluid Gal	
2	Lead Cement	VARICEM (TM) CEMENT	410	sack	12.3	2.38		8	13.77	
13.70 Gal			FRESH WATER							

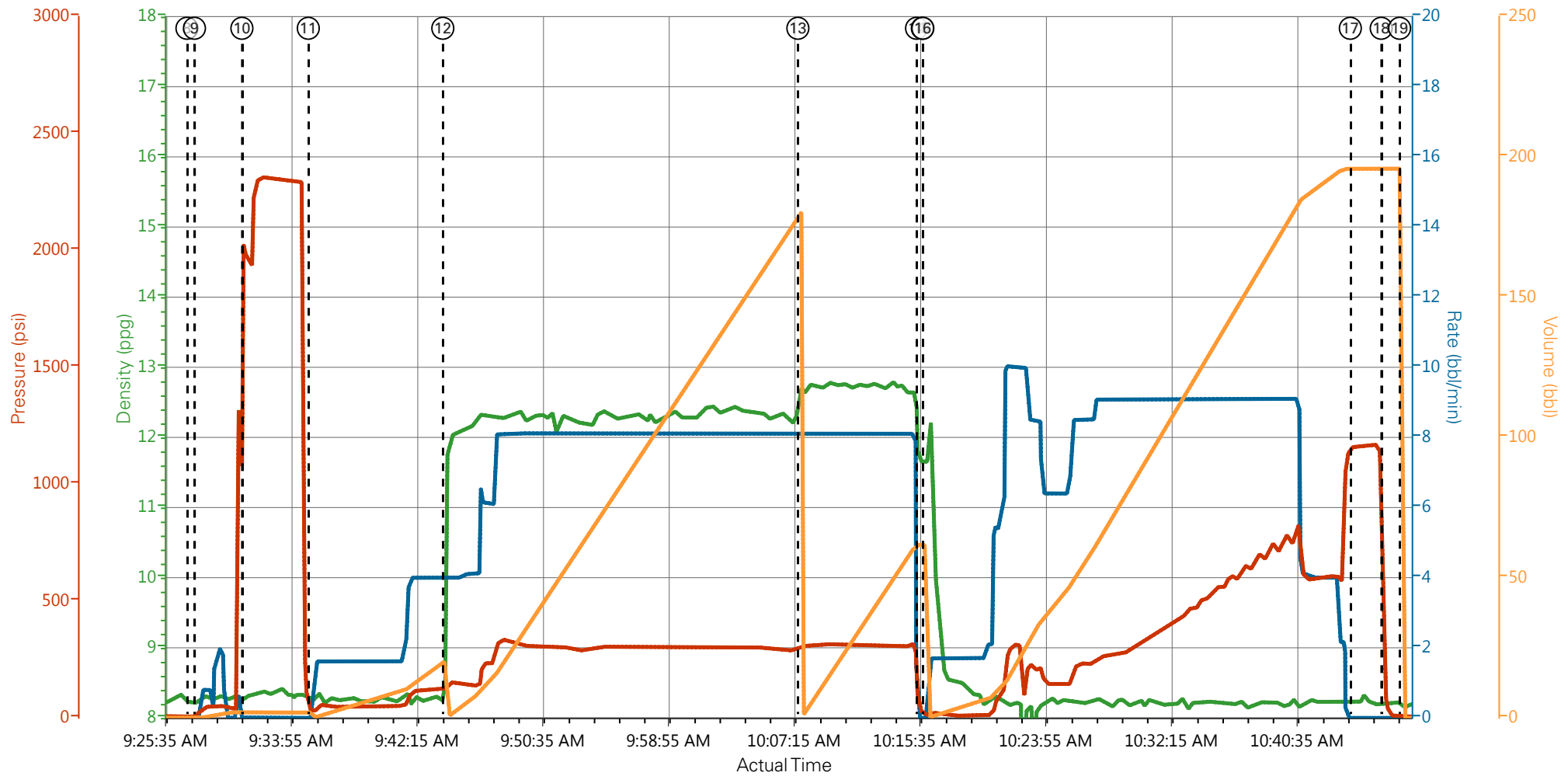
Fluid #	Stage Type	Fluid Name		Qty	Qty UoM	Mixing Density lbm/gal	Yield ft3/sack	Mix Fluid Gal	Rate bbl/min	Total Mix Fluid Gal
3	Tail Cement	VARICEM (TM) CEMENT		165	sack	12.8	2.11		8	11.77
11.71 Gal		FRESH WATER								
Fluid #	Stage Type	Fluid Name		Qty	Qty UoM	Mixing Density lbm/gal	Yield ft3/sack	Mix Fluid Gal	Rate bbl/min	Total Mix Fluid Gal
4	Fresh Water Displacement	Fresh Water Displacement		196.3	bbl	8.34			9	
Cement Left In Pipe		Amount	46 ft			Reason		Shoe Joint		
Comment										

1.1 Job Event Log

Type	Seq. No.	Graph Label	Date	Time	Source	DH Density (ppg)	Comb Pump Rate (bbl/min)	PS Pump Press (psi)	Pump Stg Tot (bbl)	Comment
Event	1	Call Out	8/26/2014	22:00:00	USER					CREW COMPLETE PREVIOUS JOB AND ROLLED TO CURRENT JOB
Event	2	Pre-Convoy Safety Meeting	8/26/2014	23:00:00	USER					THOMAS PONDER/ ANDREW LINN/ JOSH BUNIGER/ MAURICE MOORMAN-DISCUSSED ROAD HAZZARDS, ROAD CONSTRUCTION, FIT FOR DUTY, LEGAL TO DRIVE, RAINY WEATHER, WAY POINTS, CHAINING UP, AND JOURNEY MANAGEMENT
Event	3	Arrive At Loc	8/27/2014	04:00:00	USER					ARRIVED AT LOCATION AS PER OSR AND WAITED FOR TRAC EQUIPMENT TO TOW OUR EQUIPMENT TO LOCATION. TRACK EQUIPMENT WAS DELAYED DUE TO TOWING 3RD PARTY EQUIPMENT
Event	4	Assessment Of Location Safety Meeting	8/27/2014	06:00:00	USER					WALKED LOCATION- TIGHT LOCATION STRESSED THE IMPORTANCE OF SPOTTERS AND COMMUNICATION FOR POSITIONING EQUIPMENT
Event	5	Pre-Rig Up Safety Meeting	8/27/2014	08:30:00	USER					THOMAS PONDER/ ANDREW LINN/ JOSH BUNIGER/ MAURICE MOORMAN-DISCUSSED SWING PLAINS, PINCH POINTS, RIG UP RESPONSIBILITIES
Event	6	Rig-Up Equipment	8/27/2014	08:45:00	USER					ENSURED BULK BULK EQUIPMENT AIRED UP WITH NO LEAKS. MADE SURE RIG WATER WAS DOUBLE VALVED
Event	7	Pre-Job Safety Meeting	8/27/2014	09:00:00	USER					THOMAS PONDER/ ANDREW LINN/ JOSH BUNIGER/ MAURICE MOORMAN / RIG CREW CREW AND OSR-DISCUSSED MUSTER POINT, EMERGENCY PROCEDURES, PRESSURED LINES AND JOB PROCEDURES
Event	8	Start Job	8/27/2014	09:27:13	COM6					
Event	9	Prime Pumps	8/27/2014	09:27:43	COM6					VERIFIED ALL LO-TORC POSITIONS
Event	10	Test Lines	8/27/2014	09:30:51	COM6			2311		IAW WITH HMS PROCEDURE- PRESSURE TESTED 2300 PSI AND HELD PRESSURE WITH NO LEAKS IN LINES - ENSURED GROUND, FLOOR AND CELLAR WAS CLEAR OF PERSONEL
Event	11	Pump Spacer 1	8/27/2014	09:35:15	COM6	8.33	4	104	20.00	20 BBL OF FRESH WATER AT 4 BPM - ESTABLISHED CONSISTANT RETURNS
Event	12	Pump Lead Cement	8/27/2014	09:44:10	COM6	12.3	8	337	173.8	PUMPED 410 SKS AT 12.3LBS/GAL -PUMPED 165 2.38 CU/SK - 13.77 GAL/SK

Event	13	Pump Tail Cement	8/27/2014	10:07:42	COM6	12.8	8	313	62.0	PUMPED 165 SK OF 12.8 LBS/GAL-2.11 CU/SK - 11.77 GAL/SK
Event	14	Shutdown	8/27/2014	10:15:34	USER					SHUT DOWN TO DROP TOP PLUG
Event	15	Drop Top Plug	8/27/2014	10:15:57	COM6					OSR VERIFIED PLUG WAS AWAY
Event	16	Pump Displacement	8/27/2014	10:15:59	COM6	8.33	9	830	196.3	196.3 BBLS OF FRESH WATER AT 9 BPM- SLOWED TO 4 BPM FOR THE LAST 15 BBL
Event	17	Bump Plug	8/27/2014	10:44:19	COM6	8.24	0.00	1162.00	196.8	LANDED AT 604 PSI AND TOOK IT TO 1132 PSI HELD IT FOR 5 MINUTES
Event	18	Check Floats	8/27/2014	10:46:22	USER					FLOATS HELD - .75 BBL BACK
Event	19	End Job	8/27/2014	10:47:35	COM6					
Event	20	Pre-Rig Down Safety Meeting	8/27/2014	10:50:00	USER					THOMAS PONDER/ ANDREW LINN/ JOSH BUNIGER/ MAURICE MOORMAN-DISCUSSED SWING PLAINS, PINCH POINTS, RIG DOWN RESPONSIBILITIES, BAILS AND PLUG CONTAINER COMING DOWN FROM THE FLOOR
Event	21	Rig-Down Equipment	8/27/2014	11:00:00	USER					SECURED ALL EQUIPMENT FOR TRAVEL
Event	22	Pre-Convoy Safety Meeting	8/27/2014	12:15:00	USER					THOMAS PONDER/ ANDREW LINN/ JOSH BUNIGER/ MAURICE MOORMAN-DISCUSSED ORDER OF VEHICLES, WAY POINTS, FOLLOWING DISTANCE, HAZARDS OF DEPARTING LOCATION - NO INJURIES REPORTED
Event	23	Depart Location	8/27/2014	12:30:00	USER					SUBMIT JOURNEY FOR TRAVEL TO RESET LOCATION - THANK YOU FOR USING HALLIBURTON - THOMAS PONDER AND CREW

WPX - AP 324-17-695 - 9.625 IN SURFACE



— DH Density (ppg)
 — Comb Pump Rate (bbl/min)
 — PS Pump Press (psi)
 — Pump Stg Tot (bbl)

- | | | | |
|---|--------------------------|---------------------|-------------------------------|
| ① Call Out | ⑦ Pre-Job Safety Meeting | ⑬ PumpTail Cement | ⑲ End Job |
| ② Pre-Convoy Safety Meeting | ⑧ Start Job | ⑭ Shutdown | ⑳ Pre-Rig Down Safety Meeting |
| ③ Arrive At Loc | ⑨ Prime Pumps | ⑮ Drop Top Plug | ㉑ Rig-Down Equipment |
| ④ Assessment Of Location Safety Meeting | ⑩ Test Lines | ⑯ Pump Displacement | ㉒ Pre-Convoy Safety Meeting |
| ⑤ Pre-Rig Up Safety Meeting | ⑪ Pump Spacer 1 | ⑰ Bump Plug | ㉓ Depart Location |
| ⑥ Rig-Up Equipment | ⑫ Pump Lead Cement | ⑱ Check Floats | |

▼ **HALLIBURTON** | iCem® Service

Created: 2014-08-27 08:47:54, Version: 3.0.121

Edit

Customer: WPX ENERGY ROCKY MOUNTAIN LLC-EBUS

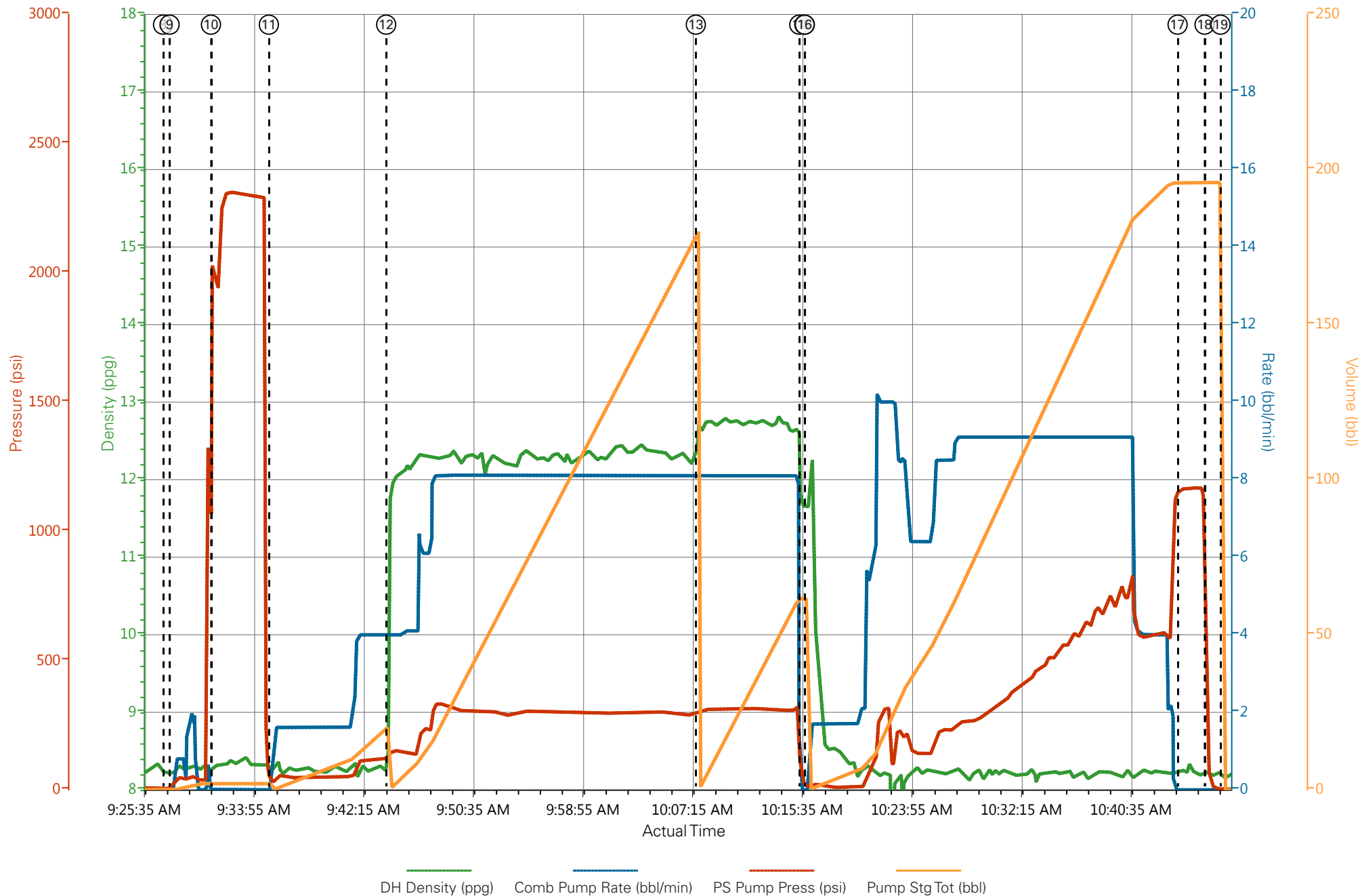
Job Date: 8/27/2014 8:52:02 AM

Well: AP 324-17-695

Representative: THOMAS PONDER

Sales Order #: 901613117

WPX - AP 324-17-695 - 9.625 IN SURFACE



HALLIBURTON

Company: WPX

Date: 8/27/2014

Submitted by: THOMAS PONDER

Date Rec.: 8/27/2014

Attention: LARRY COOKSEY

S.O.# 901613117

Lease AP

Job Type: SURFACE

Well # 324-17-695

Specific Gravity *MAX* 1

pH *8* 7

Potassium (K) *5000* 250 Mg / L

Calcium (Ca) *500* 120 Mg / L

Iron (FE2) *300* 0 Mg / L

Chlorides (Cl) *3000* 0 Mg / L

Sulfates (SO₄) *1500* <200 Mg / L

Carbonates hardness

Temp *40-80* 65 Deg

Total Dissolved Solids 185 Mg / L

Respectfully: THOMAS PONDER

Title: CEMENTING SUPERVISOR

Location: GRAND JCT, CO

Sales Order #: 0901613117	Line Item: 10	Survey Conducted Date: 8/27/2014
Customer: WPX ENERGY ROCKY MOUNTAIN LLC-EBUS		Job Type (BOM): CMT SURFACE CASING BOM
Customer Representative: BEAUDE OAKS		API / UWI: (leave blank if unknown) 05-045-21391-00
Well Name: AP		Well Number: 0080125221
Well Type: DIRECTIONAL GAS	Well Country: USA	
H2S Present: No	Well State: COLORADO	Well County: GARFIELD

Dear Customer,

We hope that you were satisfied with the service quality of this job performed by Halliburton. It is the aim of our management and service personnel to deliver equipment and service of a standard unmatched in the service sector of the energy industry.

Please take the time to let us know if our performance met with your satisfaction. Please be as critical as possible to ensure we constantly improve our service. Your comments are of great value to us and are intended for the exclusive use of Halliburton.

CUSTOMER SATISFACTION SURVEY

CATEGORY	CUSTOMER SATISFACTION RESPONSE	
Survey Conducted Date	The date the survey was conducted	8/27/2014
Survey Interviewer	The survey interviewer is the person who initiated the survey.	HX41187
Customer Participation	Did the customer participate in this survey? (Y/N)	Yes
Customer Representative	Enter the Customer representative name	BEAUDE OAKS
HSE	Was our HSE performance satisfactory? Circle Y or N	Yes
Equipment	Were you satisfied with our Equipment? Circle Y or N	Yes
Personnel	Were you satisfied with our people? Circle Y or N	Yes
Customer Comment	Customer's Comment	

CUSTOMER SIGNATURE

Sales Order #: 0901613117	Line Item: 10	Survey Conducted Date: 8/27/2014
Customer: WPX ENERGY ROCKY MOUNTAIN LLC-EBUS		Job Type (BOM): CMT SURFACE CASING BOM
Customer Representative: BEAUDE OAKS		API / UWI: (leave blank if unknown) 05-045-21391-00
Well Name: AP		Well Number: 0080125221
Well Type: DIRECTIONAL GAS	Well Country: USA	
H2S Present: No	Well State: COLORADO	Well County: GARFIELD

KEY PERFORMANCE INDICATORS

General	
Survey Conducted Date The date the survey was conducted	8/27/2014

Cementing KPI Survey	
Type of Job Select the type of job. (Cementing or Non-Cementing)	0
Select the Maximum Deviation range for this Job What is the highest deviation for the job you just completed? This may not be the maximum well deviation.	Vertical
Total Operating Time (hours) Total Operating Hours Including Rig-up, Pumping, Rig-down. Enter in decimal format.	3
HSE Incident, Accident, Injury HSE Incident, Accident, Injury. This should be recordable incidents only.	No
Was the job purpose achieved? Was the job delivered correctly as per customer agreed design?	Yes
Operating Hours (Pumping Hours) Total number of hours pumping fluid on this job. Enter in decimal format.	1
Customer Non-Productive Rig Time (hrs) Lost time due to Halliburton in the start, execution, or completion of an ordered service or product, or delays in a follow-on service. Enter in decimal format. 0 if none.	0
Type of Rig Classification Job Was Performed Type Of Rig (classification) Job Was Performed On	Drilling Rig (Portable)
Number Of JSAs Performed Number Of Jsas Performed	6
Number of Unplanned Shutdowns Unplanned shutdown is when injection stops for any period of time.	0
Was this a Primary Cement Job (Yes / No)	Yes

Sales Order #: 0901613117	Line Item: 10	Survey Conducted Date: 8/27/2014
Customer: WPX ENERGY ROCKY MOUNTAIN LLC-EBUS		Job Type (BOM): CMT SURFACE CASING BOM
Customer Representative: BEAUDE OAKS		API / UWI: (leave blank if unknown) 05-045-21391-00
Well Name: AP		Well Number: 0080125221
Well Type: DIRECTIONAL GAS	Well Country: USA	
H2S Present: No	Well State: COLORADO	Well County: GARFIELD

Primary Cement Job= Casing job, Liner job, or Tie-back job.	
Did We Run Wiper Plugs? Did We Run Top And Bottom Casing Wiper Plugs?	Top
Mixing Density of Job Stayed in Designed Density Range (0-100%) Density Range defined as +/- .20 ppg. Calculation: Total BBLs cement mixed at designed density divided by total BBLs of cement multiplied by 100	99
Was Automated Density Control Used? Was Automated Density Control (ADC) Used ?	Yes
Pump Rate (percent) of Job Stayed At Designed Pump Rate Pump Rate range defined as +/- 1bbl/min. Calculation: Total BBLs of fluid pumped at the designed rate divided by Total BBLs of fluid pumped, multiplied by 100	99
Nbr of Remedial Sqz Jobs Rqd - Competition Number Of Remedial Squeeze Jobs Required After Primary Job Performed By Competition	0
Nbr of Remedial Plug Jobs Rqd - HES Number Of Remedial Plug Jobs Needed After Primary Plug Pumped By HES	0
Nbr of Remedial Sqz Jobs Rqd - HES Number Of Remedial Squeeze Jobs Required After Primary Job Performed By HES	0