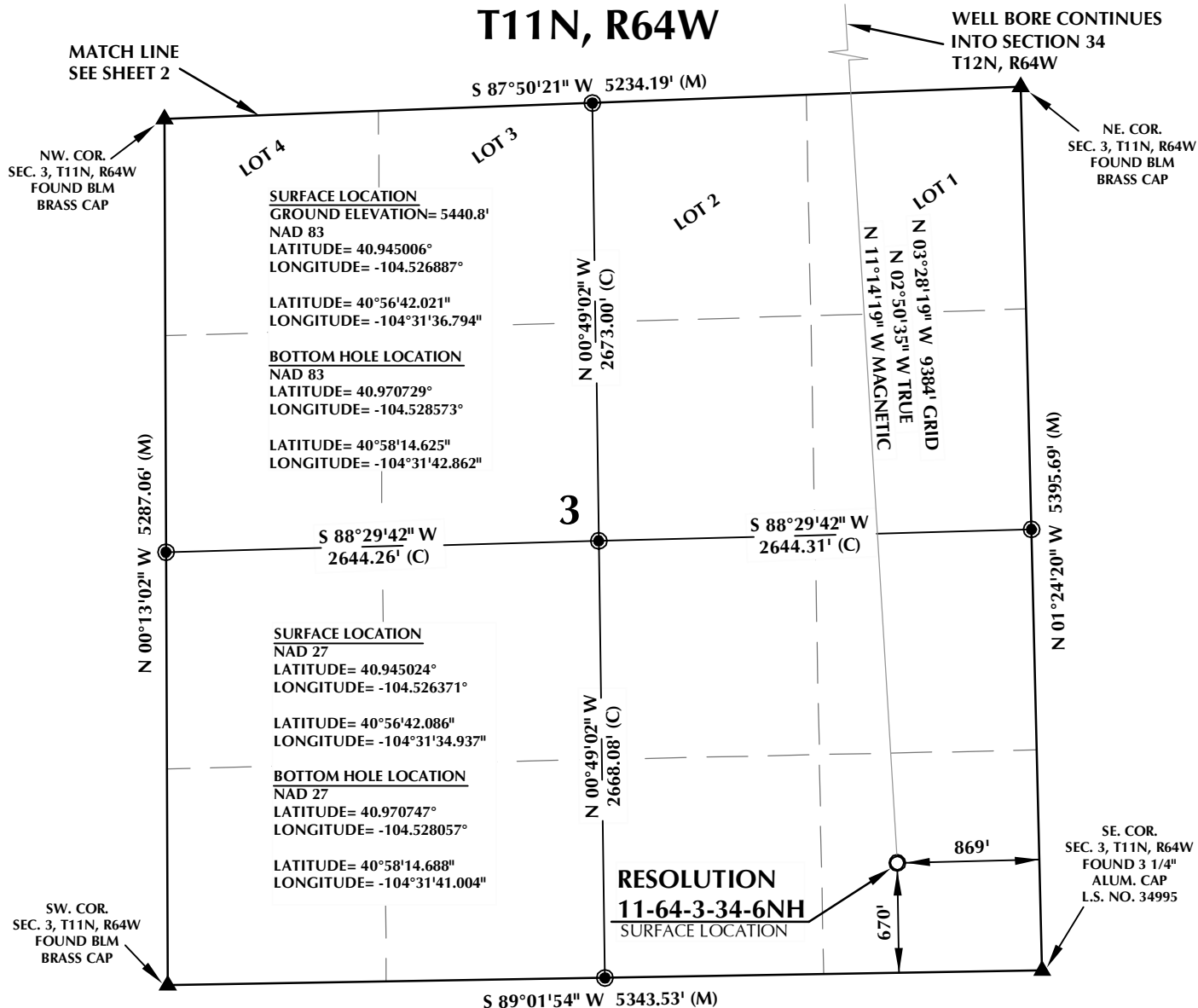


K:\ANADARKO\2014\1014-52_RESOLUTION_PROSPECT_WELLS_CO\PLATS\RESOLUTION_11-64-3-34CH.dwg, 2/5/2015 3:42:51 PM, lba

T11N, R64W

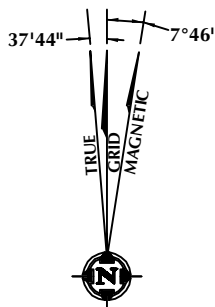


CERTIFICATE OF SURVEYOR:

THIS IS TO CERTIFY THAT THE ABOVE PLAT WAS PREPARED FROM FIELD NOTES OF ACTUAL SURVEY MADE BY ME OR UNDER MY SUPERVISION AND THAT THE SAME ARE TRUE AND CORRECT TO THE BEST OF MY KNOWLEDGE AND BELIEF. THIS CERTIFICATE DOES NOT REPRESENT A LAND SURVEY PLAT OR IMPROVEMENT SURVEY PLAT AS DEFINED BY C.S. 38-51-102 AND CANNOT BE RELIED UPON TO DETERMINE OWNERSHIP.

Benjamin J. Reenders
BENJAMIN J. REENDERS
PROFESSIONAL LAND SURVEYOR
COLORADO REGISTRATION NUMBER 48365
2/6/15

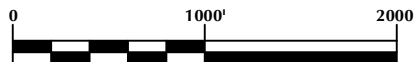
NOTICE:
ACCORDING TO COLORADO STATE LAW YOU MUST COMMENCE ANY LEGAL ACTION BASED UPON ANY DEFECT IN THIS SURVEY WITHIN THREE YEARS AFTER YOU FIRST DISCOVER SUCH DEFECT. IN NO EVENT MAY ANY ACTION BASED UPON ANY DEFECT IN THIS SURVEY BE COMMENCED MORE THAN TEN YEARS FROM THE DATE ON THE CERTIFICATION SHOWN HEREON.



NOTE:
MAGNETIC NORTH IS CURRENT AS OF 2/4/2015.
MAGNETIC NORTH CHANGES WEST 0°06' PER YEAR.

NOTES:

- ▲ INDICATES FOUND SECTION CORNER
- INDICATES CALCULATED CORNER
- ELEVATION BASED ON NAVD88 (GEOID09)
- BASIS OF BEARING DERIVED FROM COLORADO COORDINATE SYSTEM 1983 NORTH ZONE UNLESS OTHERWISE NOTED.
- ALL MEASURED DISTANCES ARE GRID.
COMBINED SCALE FACTOR: .99977325
- OPERATOR: ZACH PAXTON / PDOP = 1.4
- SEE ADDENDUM TO WELL LOCATION CERTIFICATE FOR EXISTING IMPROVEMENTS WITHIN 500' OF THE WELL PAD.
- WELL FOOTAGES ARE MEASURED AT RIGHT ANGLES TO THE SECTION LINES.
- THE BOTTOM OF HOLE BEARS N03°28'19"W, 9384' FROM THE SURFACE LOCATION.



SCALE: 1" = 1000'

WELL PAD - RESOLUTION 11-64-3-34CH

RESOLUTION 11-64-3-34-6NH
WELL LOCATION CERTIFICATE
670' FSL & 869' FEL SESE (SURFACE)
LOCATED IN SECTION 3
T11N, R64W, 6TH P.M.
600' FNL & 1280' FEL NENE (BOTTOM)
LOCATED IN SECTION 34
T12N, R64W, 6TH P.M.
WELD COUNTY, COLORADO

Anadarko E&P
Onshore LLC
1099 18th Street
Denver, Colorado 80202



CONSULTING, LLC

SHERIDAN OFFICE
1095 Saberton Avenue
Sheridan, Wyoming 82801
Phone 307-674-0609

LOVELAND OFFICE
1635 Foxtrail Drive, Suite 204
Loveland, Colorado 80538
Phone 970-776-4331

DRAFTED BY:	BJR	CHECKED BY:	BJR	SHEET NO:
DATE DRAFTED:	2/6/15	DATE SURVEYED:	12/17/14	1
REVISED:		FILE NAME:	14-52	1 OF 2

K:\ANADARKO\2014\11-64-3-34CH\RESOLUTION 11-64-3-34CH.dwg, 2/5/2015, 3:42:54 PM, lba

T12N, R64W

NW. COR.
SEC. 34, T12N, R64W
FOUND ALUM. CAP
L.S. NO. 16154

NE. COR.
SEC. 34, T12N, R64W
SET ALUM. CAP
L.S. NO. 38305

S 87°28'08" W 5233.23' (M)

SURFACE LOCATION
GROUND ELEVATION= 5440.8'
NAD 83
LATITUDE= 40.945006°
LONGITUDE= -104.526887°

LATITUDE= 40°56'42.021"
LONGITUDE= -104°31'36.794"

BOTTOM HOLE LOCATION
NAD 83
LATITUDE= 40.970729°
LONGITUDE= -104.528573°

LATITUDE= 40°58'14.625"
LONGITUDE= -104°31'42.862"

34

S 87°39'15" W
2616.84' (C)

S 87°39'15" W
2616.84' (C)

SURFACE LOCATION
NAD 27
LATITUDE= 40.945024°
LONGITUDE= -104.526371°

LATITUDE= 40°56'42.086"
LONGITUDE= -104°31'34.937"

BOTTOM HOLE LOCATION
NAD 27
LATITUDE= 40.970747°
LONGITUDE= -104.528057°

LATITUDE= 40°58'14.688"
LONGITUDE= -104°31'41.004"

SW. COR.
SEC. 34, T12N, R64W
FOUND BLM
BRASS CAP

SE. COR.
SEC. 34, T12N, R64W
FOUND BLM
BRASS CAP

MATCH LINE
SEE SHEET 1

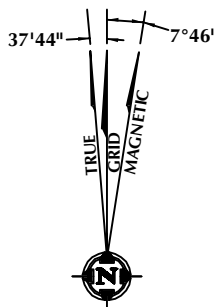
S 87°50'21" W 5234.19' (M)

CERTIFICATE OF SURVEYOR:

THIS IS TO CERTIFY THAT THE ABOVE PLAT WAS PREPARED FROM FIELD NOTES OF ACTUAL SURVEY MADE BY ME OR UNDER MY SUPERVISION AND THAT THE SAME ARE TRUE AND CORRECT TO THE BEST OF MY KNOWLEDGE AND BELIEF. THIS CERTIFICATE DOES NOT REPRESENT A LAND SURVEY PLAT OR IMPROVEMENT SURVEY PLAT AS DEFINED BY C.S. 38-51-102 AND CANNOT BE RELIED UPON TO DETERMINE OWNERSHIP.

Benjamin J. Reenders
BENJAMIN J. REENDERS
PROFESSIONAL LAND SURVEYOR
COLORADO REGISTRATION NUMBER 18365
2/6/15

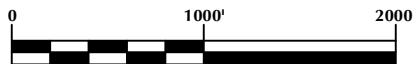
NOTICE:
ACCORDING TO COLORADO STATE LAW YOU MUST COMMENCE ANY LEGAL ACTION BASED UPON ANY DEFECT IN THIS SURVEY WITHIN THREE YEARS AFTER YOU FIRST DISCOVER SUCH DEFECT. IN NO EVENT MAY ANY ACTION BASED UPON ANY DEFECT IN THIS SURVEY BE COMMENCED MORE THAN TEN YEARS FROM THE DATE ON THE CERTIFICATION SHOWN HEREON.



NOTE:
MAGNETIC NORTH IS CURRENT AS OF 2/4/2015.
MAGNETIC NORTH CHANGES WEST 0°06' PER YEAR.

NOTES:

- ▲ INDICATES FOUND SECTION CORNER
- INDICATES CALCULATED CORNER
- ELEVATION BASED ON NAVD88 (GEOID09)
- BASIS OF BEARING DERIVED FROM COLORADO COORDINATE SYSTEM 1983 NORTH ZONE UNLESS OTHERWISE NOTED.
- ALL MEASURED DISTANCES ARE GRID.
COMBINED SCALE FACTOR: .99977325
- OPERATOR: ZACH PAXTON / PDOP = 1.4
- SEE ADDENDUM TO WELL LOCATION CERTIFICATE FOR EXISTING IMPROVEMENTS WITHIN 500' OF THE WELL PAD.
- WELL FOOTAGES ARE MEASURED AT RIGHT ANGLES TO THE SECTION LINES.
- THE BOTTOM OF HOLE BEARS N03°28'19"W, 9384' FROM THE SURFACE LOCATION.



SCALE: 1" = 1000'

WELL PAD - RESOLUTION 11-64-3-34CH

RESOLUTION 11-64-3-34-6NH
WELL LOCATION CERTIFICATE
670' FSL & 869' FEL SESE (SURFACE)
LOCATED IN SECTION 3
T11N, R64W, 6TH P.M.
600' FNL & 1280' FEL NENE (BOTTOM)
LOCATED IN SECTION 34
T12N, R64W, 6TH P.M.
WELD COUNTY, COLORADO

Anadarko E&P
Onshore LLC
1099 18th Street
Denver, Colorado 80202



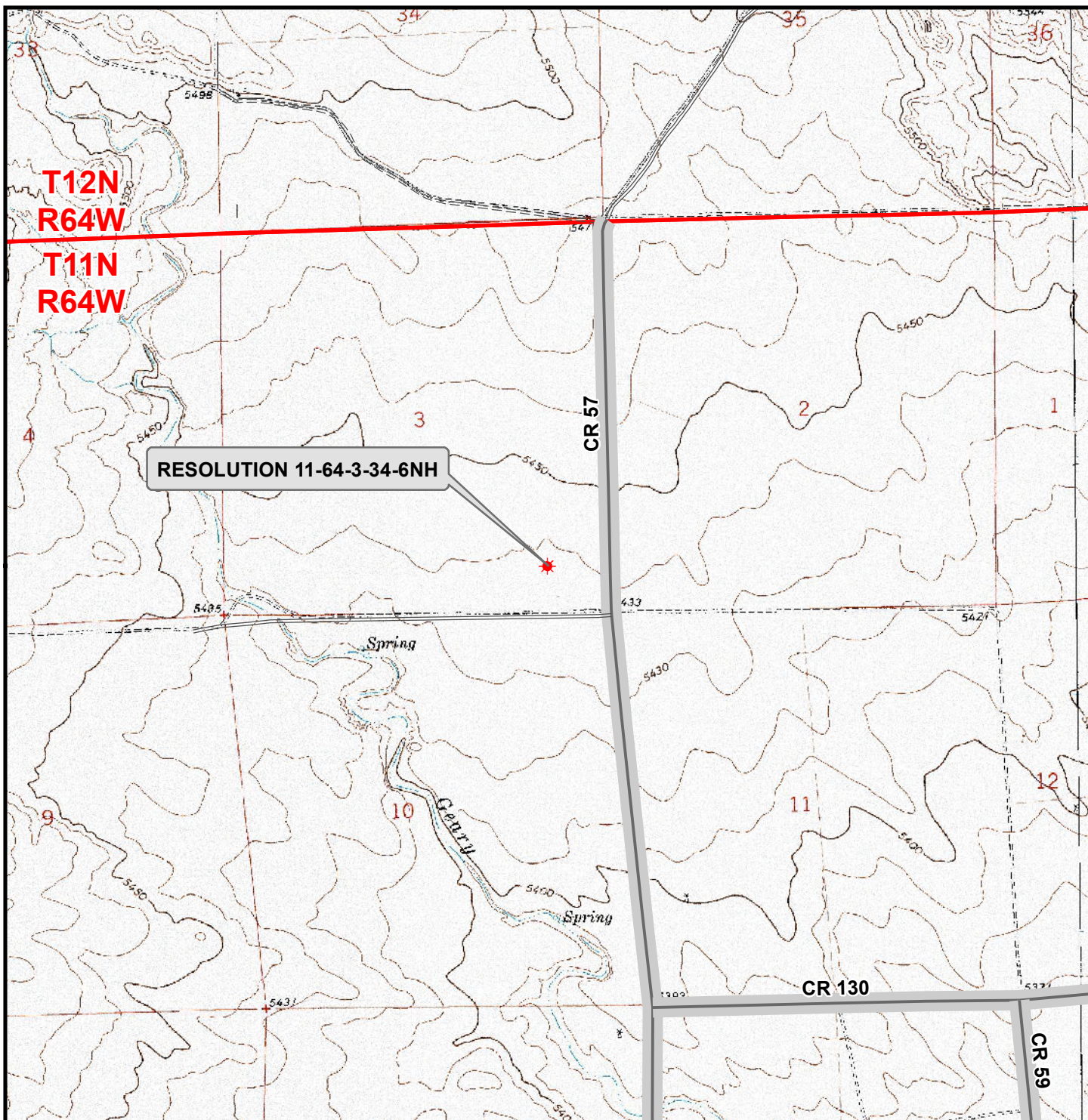
CONSULTING, LLC

SHERIDAN OFFICE
1095 Saberton Avenue
Sheridan, Wyoming 82801
Phone 307-674-0609

LOVELAND OFFICE
1635 Foxtrail Drive, Suite 204
Loveland, Colorado 80538
Phone 970-776-4331

DRAFTED BY:	BJR	CHECKED BY:	BJR	SHEET NO:
DATE DRAFTED:	2/6/15	DATE SURVEYED:	12/17/14	2
REVISED:		FILE NAME:	14-52	2 OF 2

K:\ANADARKO\2014\2014_52_RESOLUTION_PROSPECT_WELLS_COIGISMaps_ABCD\Resolution 11-64-3-34\Resolution 11-64-3-34-6NH.mxd 2/6/2015 5:10:45 PM



Legend

- ★ Well - Fee - Proposed ===== Road - Primitive - Existing ——— Road - County - Existing
———— Road - Improved - Existing ——— Road - Highway - Existing

WELL PAD - RESOLUTION 11-64-3-34CH

**GENERAL LOCATION MAP
RESOLUTION 11-64-3-34-6NH
LOCATED IN SECTION 3
T11N, R64W, 6th P.M.
WELD COUNTY, COLORADO**

**Anadarko E&P
Onshore LLC**

1099 18th Street
Denver, CO 80202



CONSULTING, LLC

SHERIDAN OFFICE
1095 Saberton Avenue
Sheridan, Wyoming 82801
Phone 307-674-0609

LOVELAND OFFICE
1635 Foxtail Drive, Suite 204
Loveland, Colorado 80538
Phone 970-776-4331



SCALE: 1" = 2,000ft

NAD83 CO-Nft

DRAWN: JELO

DATE: 6 Feb 2015

REVISED:

DATE: