

# Great Western Operating Company, LLC

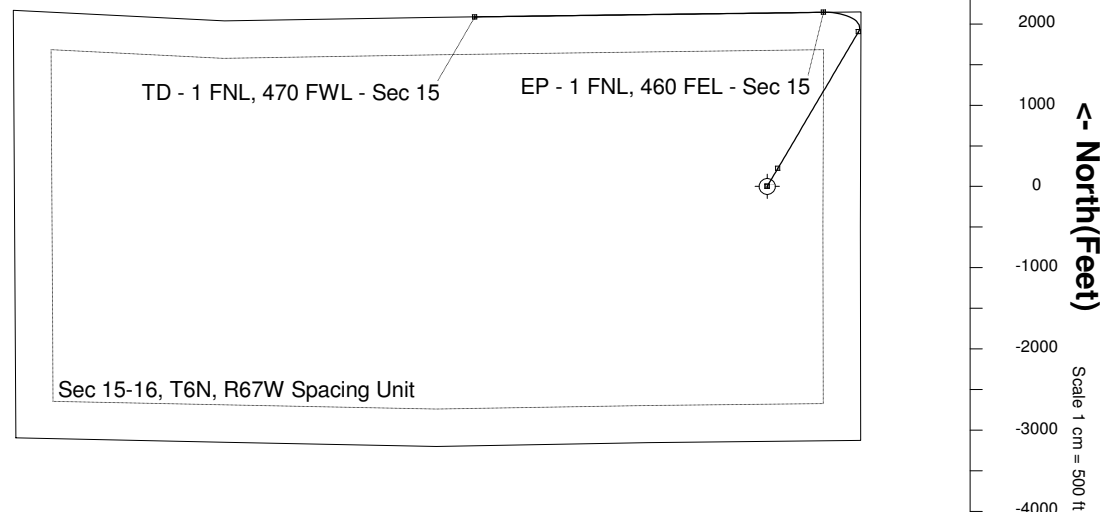
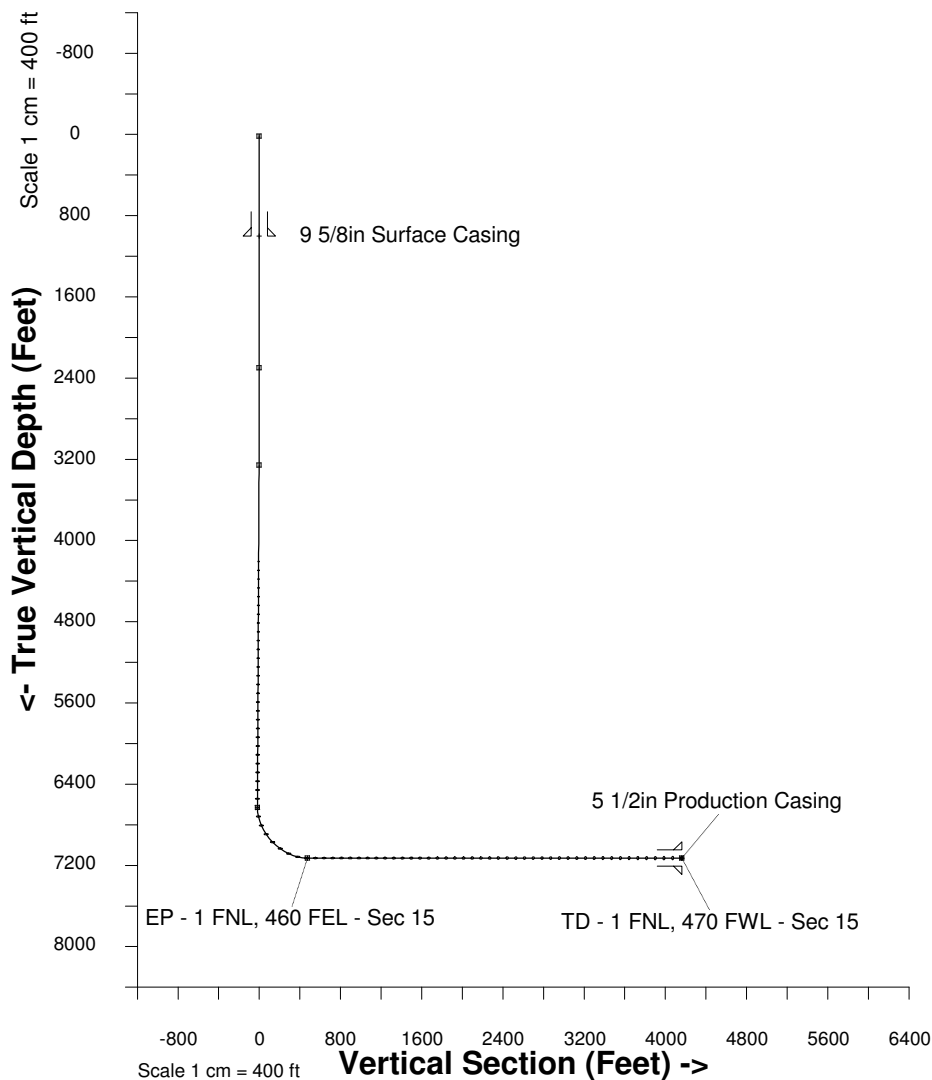
<b>Location</b>	Colorado	<b>Slot</b>	North A - Simpson FD 15-019HN
<b>Field</b>	Wattenberg	<b>Well</b>	Simpson FD 15-019HN
<b>Installation</b>	Simpson 15-16	<b>Wellbore</b>	Simpson FD 15-019HN (PWB)

Scale 1 cm = 500 ft

East (Feet) ->

-10000 -9000 -8000 -7000 -6000 -5000 -4000 -3000 -2000 -1000 0 1000 2000

5-Jan-2015  
Dip: 1.4J deg Field: 1.5nT  
Magnetic North is 1.4J deg East of True North  
GRID North is 0.40 deg East of True North  
To correct azimuth from True to GRID subtract 0.40 deg  
To correct azimuth from Magnetic to GRID add 1.4J deg



## WELL PROFILE DATA

Point	MD	Inc	Azi	TVD	North	East	deg/100ft	V. Sect
Tie on	0.00	0.00	0.00	0.00	0.00	0.00	0.00	0.00
KOP	2283.80	0.00	30.55	2283.80	0.00	0.00	0.00	0.00
End of Build	3286.40	30.08	30.55	3240.98	221.47	130.74	3.00	-2.06
End of Hold	7183.90	30.08	30.55	6613.66	1903.58	1123.73	0.00	-17.67
Target EP - 1 FNL, 460	7992.37	90.00	269.23	7111.60	2144.24	694.96	13.00	473.98
T.D. & Target TD - 1 FN	12288.23	90.00	269.23	7111.60	2086.86	-3600.52	0.00	4161.57

Created by admin  
Date plotted 16-Jan-2015  
Plot reference is Simpson FD 15-019HN (PWB).  
Ref wellpath is Simpson FD 16-019HN (PWP#1).  
Coordinates are in Feet reference North A - Simpson FD 15-019HN.  
True Vertical Depths are reference Rig Datum.  
Measured Depths are reference Rig Datum.  
Rig Datum: Planned Datum #1  
Rig Datum to Mean Sea Level: 4824.40 ft.  
Plot North is aligned to GRID North.  
Ellipse dimensions are of PROJECTED error ellipsoid  
Ellipsoids are scaled to 99.48% (1D) confidence