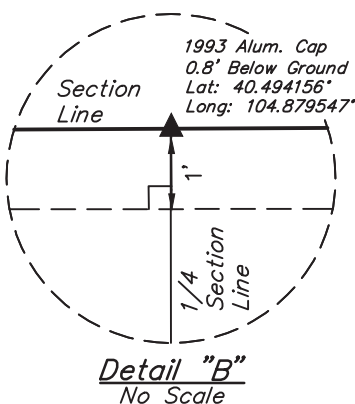
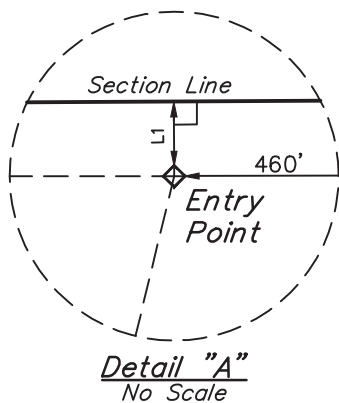


LEGEND:

- = 90° SYMBOL
- = PROPOSED WELLHEAD.
- ◆ = ENTRY POINT
- = TARGET BOTTOM HOLE.
- ▲ = SECTION CORNERS LOCATED.

LINE TABLE		
LINE	DIRECTION	LENGTH
L1	N00°47'26"W	1.15'
L2	N00°46'58"W	1.15'



PDOP = 1.4

NAD 83 (TARGET BOTTOM HOLE)
LATITUDE = 40°29'38.81" (40.494114)
LONGITUDE = 104°53'14.03" (104.887231)
NAD 27 (TARGET BOTTOM HOLE)
LATITUDE = 40°29'38.88" (40.494133)
LONGITUDE = 104°53'12.13" (104.886703)

NAD 83 (ENTRY POINT)	NAD 83 (SURFACE LOCATION)
LATITUDE = 40°29'39.08" (40.494189)	LATITUDE = 40°29'17.94" (40.488317)
LONGITUDE = 104°52'18.43" (104.871786)	LONGITUDE = 104°52'27.62" (104.874339)
NAD 27 (ENTRY POINT)	NAD 27 (SURFACE LOCATION)
LATITUDE = 40°29'39.14" (40.494206)	LATITUDE = 40°29'18.01" (40.488336)
LONGITUDE = 104°52'16.53" (104.871258)	LONGITUDE = 104°52'25.72" (104.873811)

BASIS OF BEARINGS

BASIS OF BEARINGS IS A G.P.S. OBSERVATION

BASIS OF ELEVATION

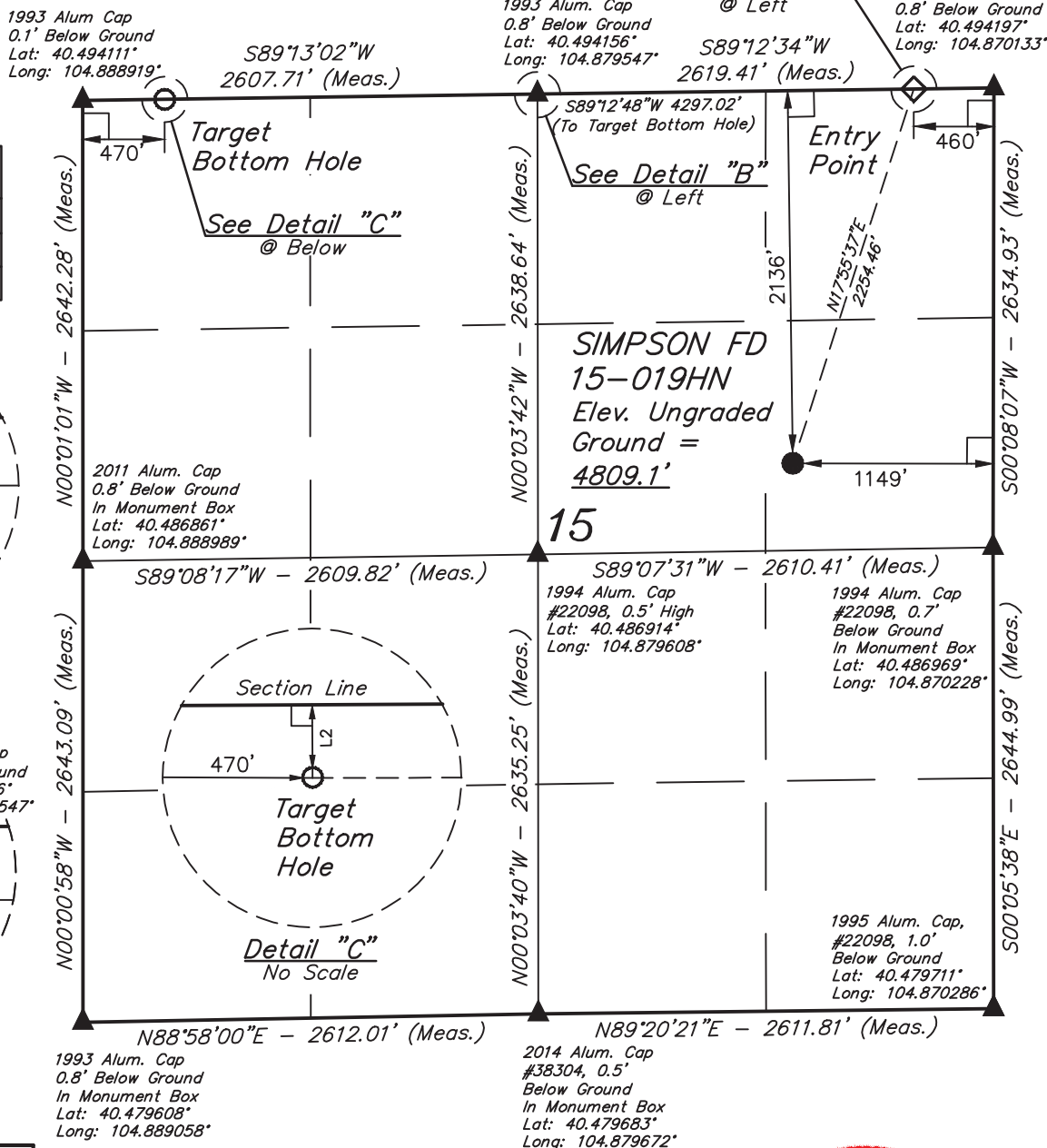
USGS COOPERATIVE BASE NETWORK CONTROL STATION, DESIGNATION "VERMILYEA". NGS DATA SHEET LISTS THE NAVD 88 ELEVATION AS BEING 5026 FEET.



UELS, LLC
Corporate Office * 85 South 200 East
Vernal, UT 84078 * (435) 789-1017



T6N, R67W, 6th P.M.



CERTIFICATE

THIS IS TO CERTIFY THAT THE ABOVE PLAT WAS PREPARED FROM FIELD NOTES OF ACTUAL SURVEYS MADE BY ME OR UNDER MY SUPERVISION AND THAT THE SAME ARE TRUE AND CORRECT TO THE BEST OF MY KNOWLEDGE AND BELIEF.



GREAT WESTERN OIL & GAS COMPANY

SIMPSON FD 15-019HN
SE 1/4 NE 1/4, SECTION 15, T6N, R67W, 6th P.M.
WELD COUNTY, COLORADO

SURVEYED BY: DALLAS NIELSEN, J.S.	DATE: 12-22-14
DRAWN BY: J.W.	DATE DRAWN: 12-29-14
SCALE: 1" = 1000'	REVISED: 00-00-00

WELL LOCATION PLAT